



DE VALK
YACHT BROKERS



GRAND BANKS 42 CLASSIC



DE VALK
YACHT BROKERS

GRAND BANKS 42 CLASSIC

KOMMENTARE DES MAKLERS

A true and ultimate gentlemen's cruiser trawler model from the highly regarded Grand Banks 42 series. The Grand Banks 42 Classic offers an easy access on deck, twin helm positions, spacious saloon, fully equipped owners cabin with excellent ensuite facilities and a large aft deck outside. The two cabin layout also makes her ideal for long and comfortable family voyages. With her two reliable Ford Lehman diesels, she is easy to maneuver. Available for viewing by appointment.

Jan-Ward van Dantzig

TECHNISCHE DATEN

Maße	12.75 x 4.15 x 1.27 (m)	Werft	American Marine Ltd.
Baujahr	1979	Kabinen	2
Material	GFK	Kojen	6
Motor(en)	2 x Ford Lehman 2712E diesel	PS/kW	2 x 120.00 (PS), 88.20 (kW)
Verkaufspreis	verkauft (MwSt.)	Liegeplatz	elsewhere / nicht im Verkaufsbüro

KONTAKT

Verkaufsbüro	De Valk Sint Annaland	Telefon	+31 166 601 000
Adresse	Koelhuisweg 4 4697 RM Sint Annaland The Netherlands	E-Mail	sintannaland@devalk.nl

HAFTUNGSAUSSCHLUSS

Diese Angaben erfolgen nach bestem Wissen, können jedoch nicht garantiert werden.



GRAND BANKS 42 CLASSIC

ALLGEMEIN

Modell	GRAND BANKS 42 CLASSIC
Typ	Motoryacht
Rumpflänge (m)	12,75
Wasserlinienlänge (m)	12,34
Breite (m)	4,15
Tiefgang (m)	1,27
Durchfahrtshöhe (m)	7,50
Durchfahrtshöhe min (m)	3,75
Stehhöhe (m)	1,95
Baujahr	1979
Werft	American Marine Ltd.
Land	Singapur
Entwerfer	Ken Smith
Gewicht (t)	15,5
CE Norm	NA
Rumpfmateral	GFK
Rumpffarbe	Weiß
Rumpfform	Knikspant
Art Kiel	Langkieler
Material Aufbauten	GFK
Stossliste	Copper
Deckmaterial	GFK
Deck Finish	Teak (needs attention)
Deck Finish Aufbauten	Teak (needs attention)
Antifouling (Jahr)	2023
Fenster Einfassung	Holz
Fenster Material	Sicherheitsglas - safety glass
Decks Luke	1 x with a blue cover
Bullauge	Holz
Flybridge	With teak (needs attention)



GRAND BANKS 42 CLASSIC

Flybridge Persenning	Blue (over the front side, over the seats and along the railing)
Radar Träger	klappbar (manual)
Mast legbar	handbetrieb
Stutzsegel mit Mast	With a blue sail cover and 2 x spreader light
Treibstofftank (Liter)	Edelstahl 1 x 750 (new in 2022)
Treibstofftank 2 (Liter)	Stahl 1 x 1120
Füllstandsanzeige (Treibstofftank)	Gauge glass
Trinkwassertank (Liter)	Stahl 2 x 500
Fäkaelien Tank (Liter)	Kunststoff 50 (never used)
Fäkaelien Tankablauf	Deck Absaugstützen
Radsteuerung	Kabelsteuerung
Innerhalb Steuerung	Varnished teak steering wheel
Radsteuerung auf Flybridge	Kabelsteuerung Varnished teak steering wheel (with a blue cover)
Not-Pinne	ja
Weitere Info Rumpf	An osmosis treatment was carried out on the underwater in 2007.
Weitere Info Farbe und Anstrich	The hull has been painted (white).
Weitere Info	Third owner since 1997.
Weitere Info	Blue aft deck railing dodgers (needs some stitching)
Weitere Info	The boat has been stored inside during very winter.

UNTERKUNFT

Kabinen	2
Kojen	6
Innen	Teak (in nice condition)
Fussboden	Teak (in nice condition)
Achterdeck	With teak (needs attention)
Ruderhaus	With twin entrance doors - Headroom 1,95 m
Salon	(in nice condition)
Standhöhe Salon (m)	1,95
Heizung	wasserheizung Kabola with radiators in both bathrooms and in the saloon



GRAND BANKS 42 CLASSIC

Achterkabine	(very spacious)
Dinette	ja
Tür zum Achterdeck	(in the aft cabin)
Kombüse	On port side - Headroom : 1,97 m
Arbeitsfläche	Duropol (wood look-a-like)
Spülbecken	Edelstahl 1 x
Herd	Gas 3 x burner
Dunstabsauge	(12 Volt)
Gas-Alarm	Truma
Kuhlschrank	Isotherm - front loader (new in 2015)
Gefrier Truhe	Small freezer in the fridge
Warmwasser System	220V + Motor Vetus boiler (approx. 60 L)
Wasserdruck System	elektrisch Hydrofoor pressurized water (Original Speck Pumpmeister)
Eignerkabine	Doppelbett + Einzelbett In the aft cabin - Headroom : 1,93 m
Länge Bett (m)	2,00 x 1,45 & 2,05 x 0,95
Kleiderschrank	hängend/Schublad/Regale
Badezimmer	en suite Headroom : 1,93 m
Toilet	en suite
Toilette System	vakuum Electric
Handwaschbecken	im Badezimmer
Dusche	en suite Headroom : 1,92 m
Gästekabine 1	Zwei Einzelbetten In front cabin + extra single bed, total = 3)- Headroom: 2,09 m
Länge Bett (m)	2,08 x 0,83 & 2,05 x 0,87 & 1,91 x 0,70
Kleiderschrank	hängend/Schublad/Regale
Badezimmer	en suite Headroom : 1,88 m
Toilette	en suite
Toilette System	vakuum Allpa - Electric (new in 2020)
Handwaschbecken	im Badezimmer
Dusche	en suite Headroom : 1,88 m
Weitere Info	Dark blue upholstery in the salon (new in 2007)



Weitere Info

Ceiling renewed in saloon and aft cabin (2007)

MASCHINEN

Motoranzahl	2
Marke	Ford Lehman
Typ	2712E
PS	120
kW	88.20
Kraftstoffart	Diesel
Installiert im Jahr	1979
Höchstgeschwindigkeit (Kn)	10
Marschgeschwindigkeit (Kn)	8
Verbrauch (l/h)	16
Motorstunden	4057 & 5857
Kühlungssystem Motor	indirekte Wärmetauscher 2 x (1 x renewed in 2021)
Antrieb	Schraubenwelle
Motor bedienung	Seilzug Kabel 2 x
Gewende getriebe	hydraulic 1 x (Starboard side : new in 2002) & 1 x Borg-Warner (original)
Exhaust	wassergekühlt
Propeller Typ	fest 2 x
Propellerblätter	3
Material Propellerwelle	Edelstahl 2 x
Propellerwelle schmierung	Wasser 2 x
Hand Bilgenpumpe	ja
Elektrische Bilgenpumpe	ja
Elektrische Anlage	12 & 220 Volt
Starterbatterie	1 x 50 Ah Optima Red Top (new in 2000)
Versorgungsbatterie	3 x 180 Ah Semi-Traction (new in 2019)
Navigationsbatterie	1x 230 Ah (new in 2019)
Batterie Monitor	2 x Mastervolt



Batterie Ladegerat	Mastervolt Ivo Smart Charger 12V/25A-2 (new in 2000)
Batterie Ladegerat/Umwandler	Victron MultiPlus Compact 12V/1600W/70A (new in 2000)
Landstrom	mit Kabel
Weitere Info	2 x Separ fuel filter with water seperator
Weitere Info	2 x Mastervolt 90A alternator
Weitere Info	Polarity switch for shore power

NAVIGATION

Kompass	In steering house & 1x Saura HB-65G Hand-Bearing compass
Tiefenanziege/Logge	Raytheon ST60 Tridata
UKW	Shipmate RS 8300 with 2nd horn on Flybridge
Autopilot	Raytheon ST6000+ (2 x control) (function not guaranteed)
Radar	Raytheon - in steering house (Scanner-type M92542)
Plotter/GPS	Raymarine hibrid touch Axion 12' (new in 2018)
Elektronische Kart(en)	ja
AIS Transceiver	ja
Radio Empfänger	Sailor S.P. Radio Type R109
Navigation Beleuchtung	ja
Sprech-vorrichtung	Answering P.A. AMP. Intercom (functioning unknown)

AUSRÜSTUNG

Feste Fenster	On Flybridge
Bimini	Blue (on the Flybridge)
Cockpit Polster	White (on the Flybridge)
Cockpit Tisch	ja
Cockpit Sessel	2 x
Badeplattform	Teak
Badeleiter	Edelstahl
Gangway	Aluminium - extendable
Heckdusche	ja
Anker	Danforth (galvanized)



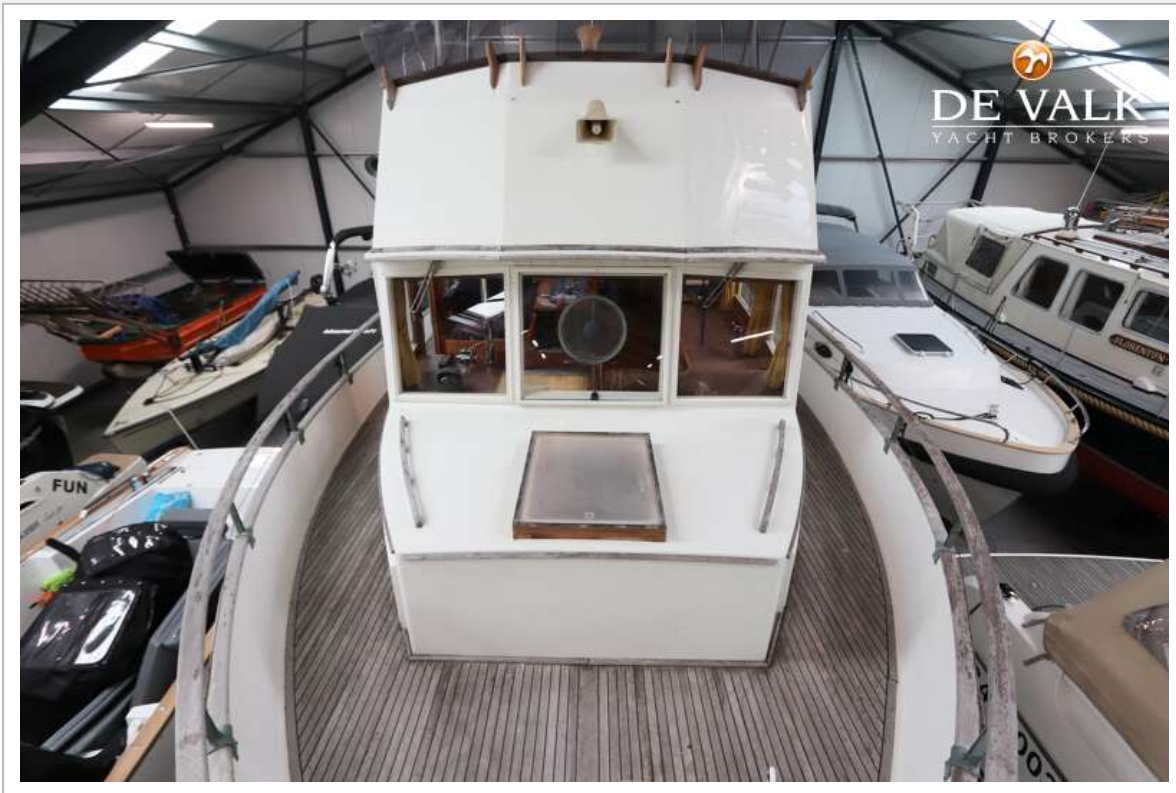
Ankerkette	Approx. 30 meter
Ankerwinde	elektrisch Neco Marine NM 872 with remote on the bow (with blue cover)
Gangspill	ja
Deckwasche	ja
Ausserborder Halterung	Teak (above the bathing platform)
Deck Kran	handbetrieben Via the steadying boom
See Reling	Teak
Zupackenschiene (aufbauten)	Teak
Seiten-Einstieg Seereling	2 x amidships
Heckkorb	Stainless steel
Bugkorb	ja
Rettungsinsel	Container 1 x Plastimo Transocean (2020) on a bracket with a blue cover
Rettungsinsel (Pers)	6
Rettungsboje	ja
Markierboje	ja
Scheibenwischer	2 x
Klar Sicht Scheibe	1 x Speich Clear-View Screen
Horn	elektrisch
Radar Reflektor	ja
Fenderkissen	ja
Festmacher	ja
Reserve Teilen	Fuel-, oil- and waterfilters & impellers
Radio-CD Spieler	Grundig radio/cd-player (function not guaranteed)
Lautsprecher im Pflicht	2 x on the flybridge (function not guaranteed)
Lautsprecher im Salon	2 x Blaupunkt 25W (function not guaranteed)
Uhr - Barometer	In the aft cabin
Feuerloscher	ja
Letzte Wartung Feuerloscher	Need to be surveyed/renewed
Feuerloscher in Maschine Raum	Need to be surveyed/renewed
Weitere Info	ja



GRAND BANKS 42 CLASSIC



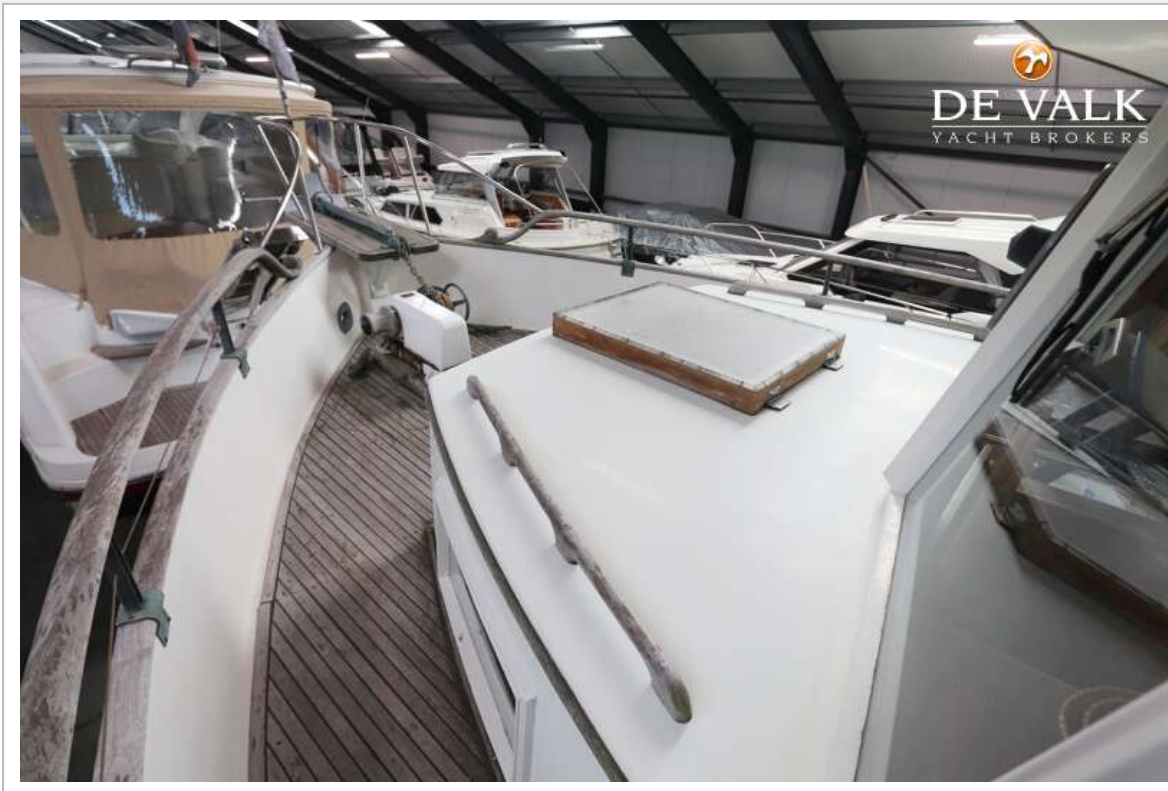
GRAND BANKS 42 CLASSIC



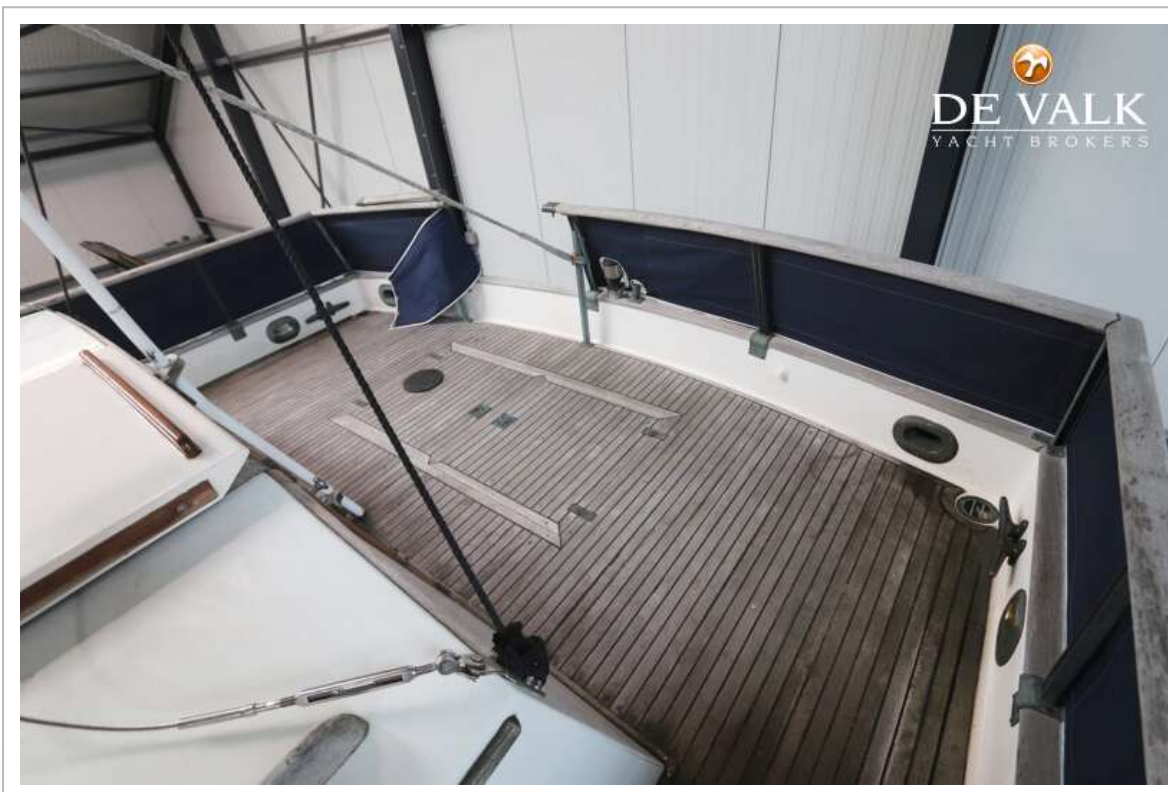
GRAND BANKS 42 CLASSIC



GRAND BANKS 42 CLASSIC



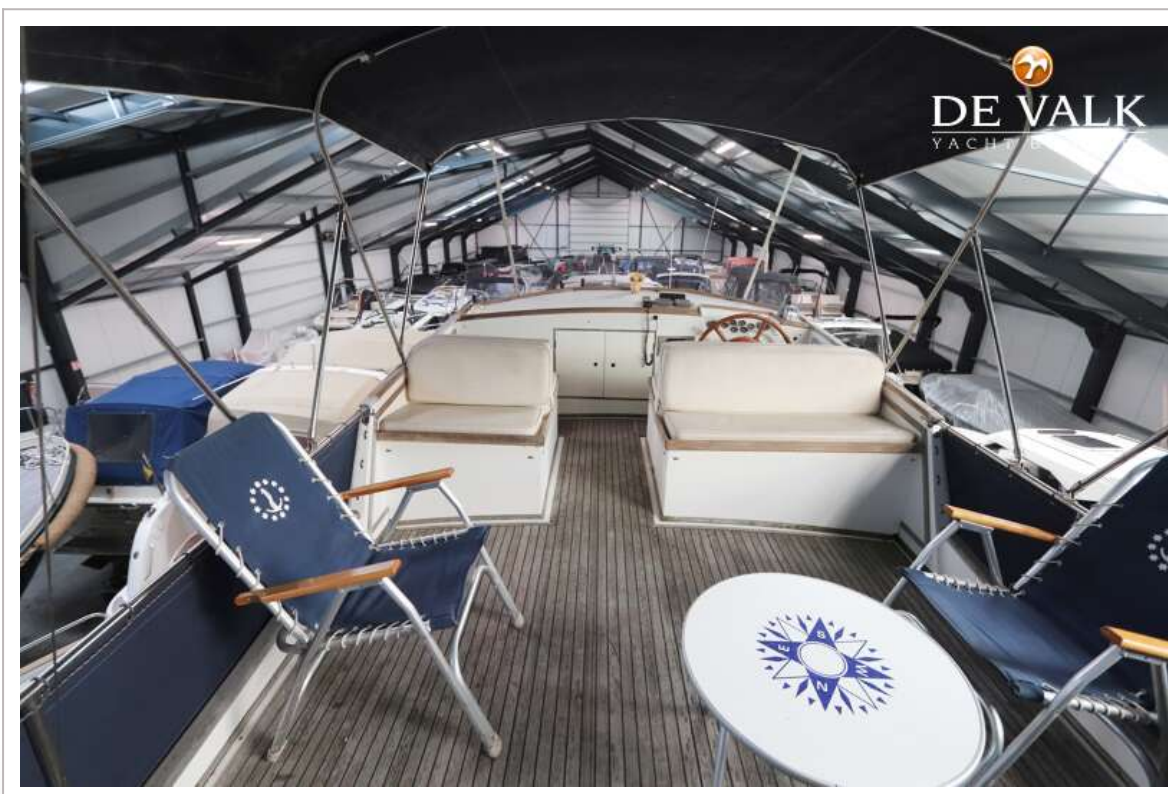
GRAND BANKS 42 CLASSIC



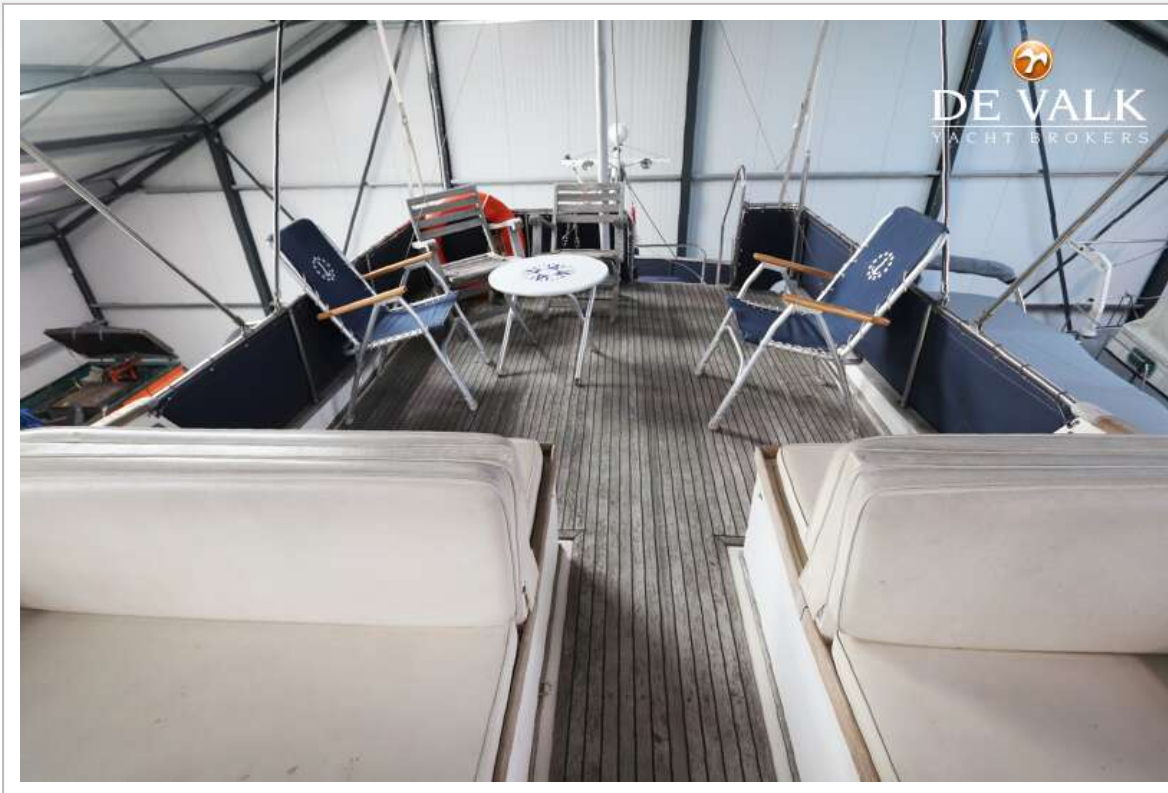
GRAND BANKS 42 CLASSIC



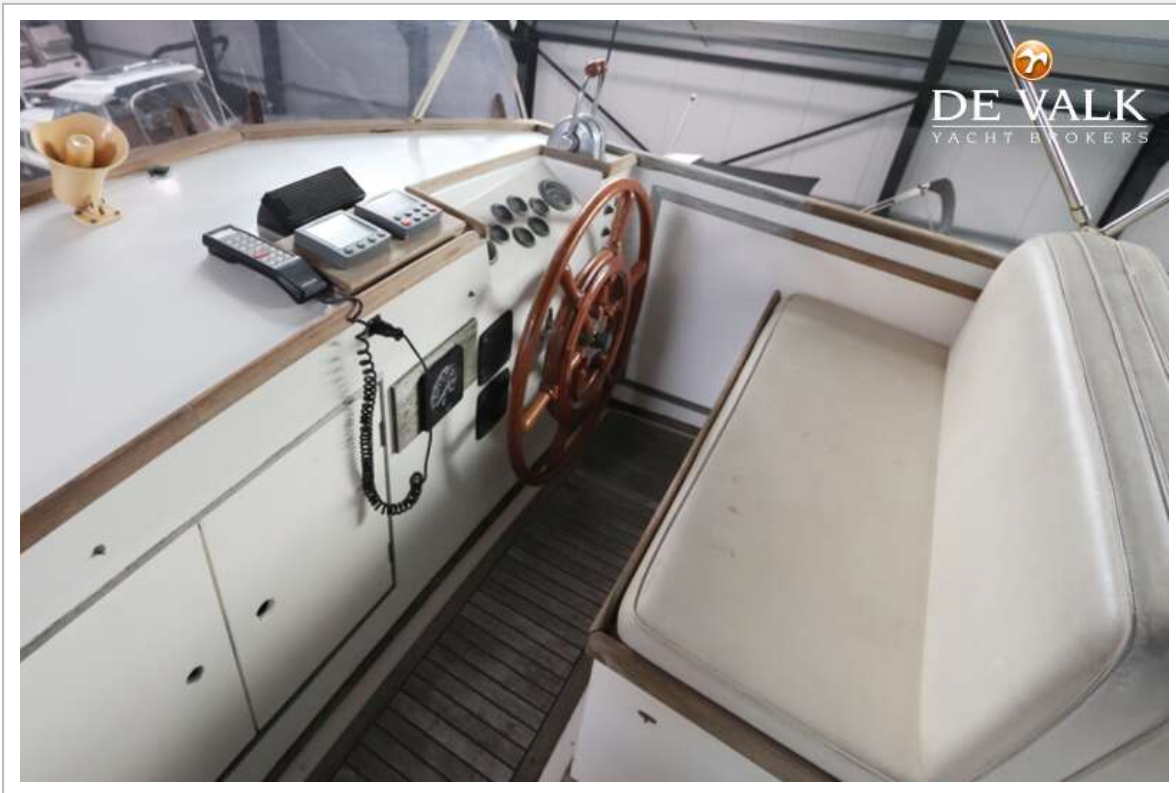
GRAND BANKS 42 CLASSIC



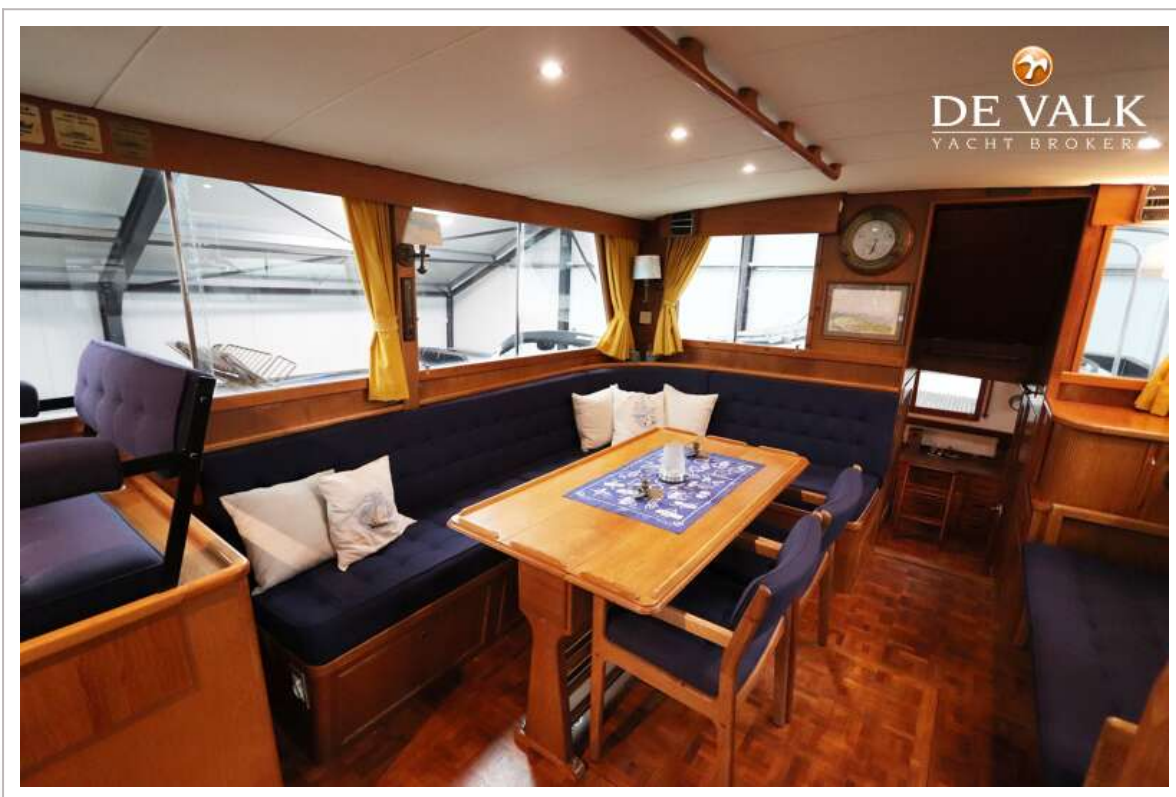
GRAND BANKS 42 CLASSIC



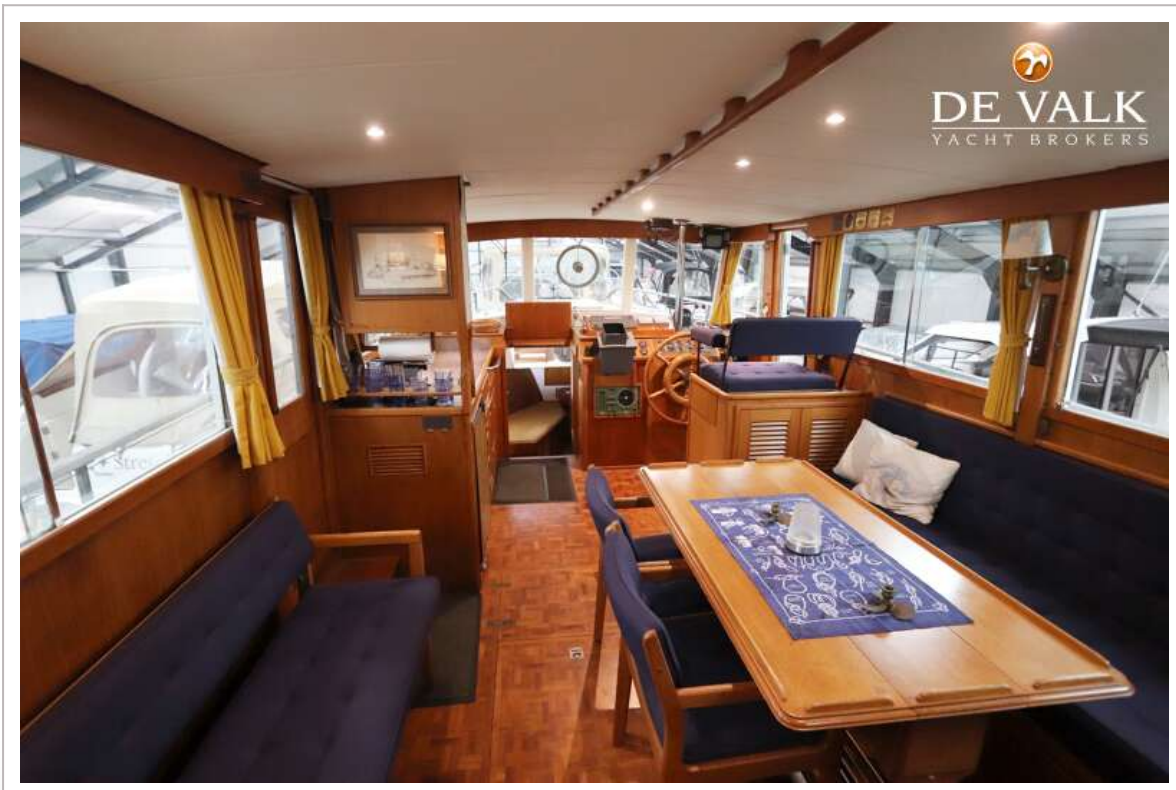
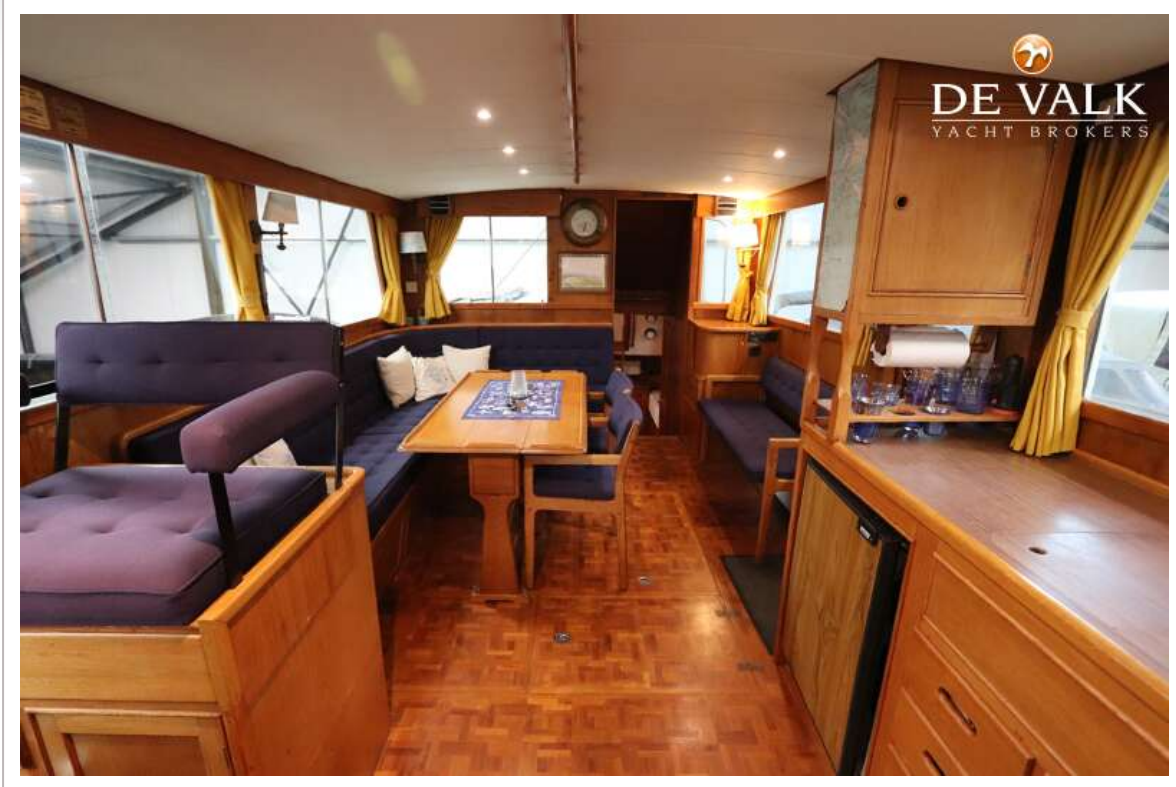
GRAND BANKS 42 CLASSIC



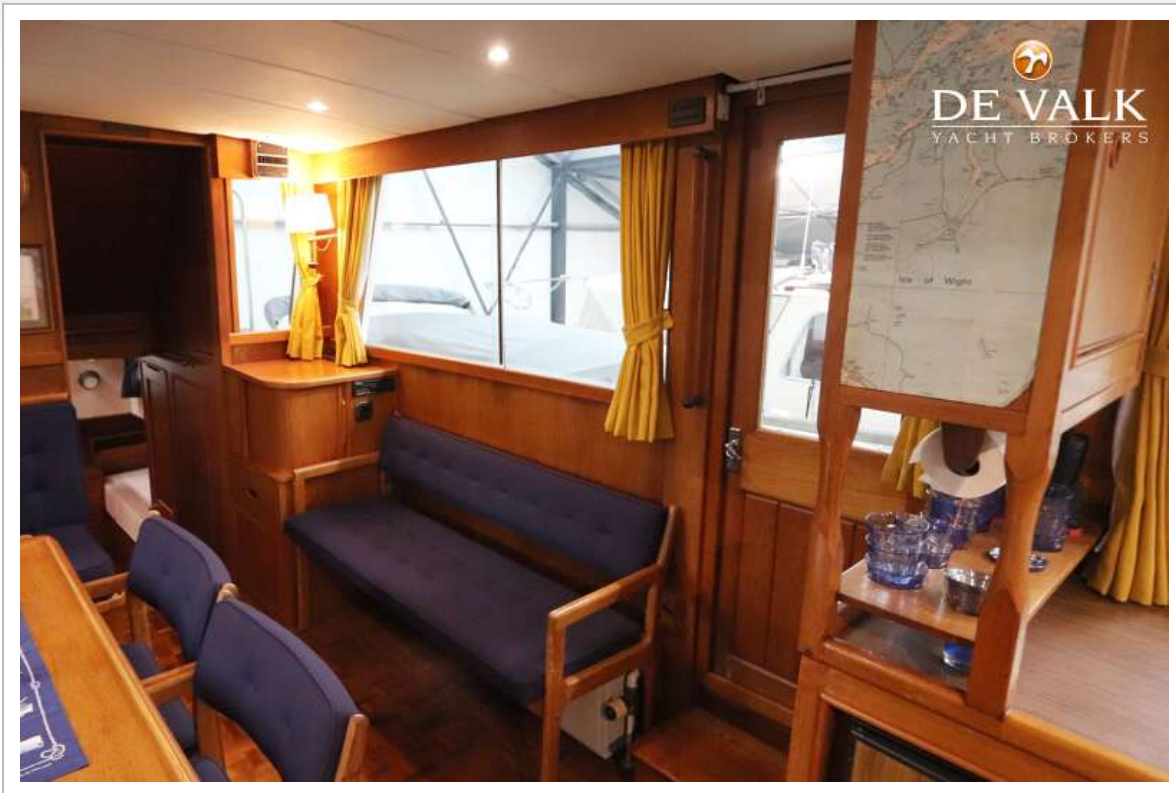
GRAND BANKS 42 CLASSIC



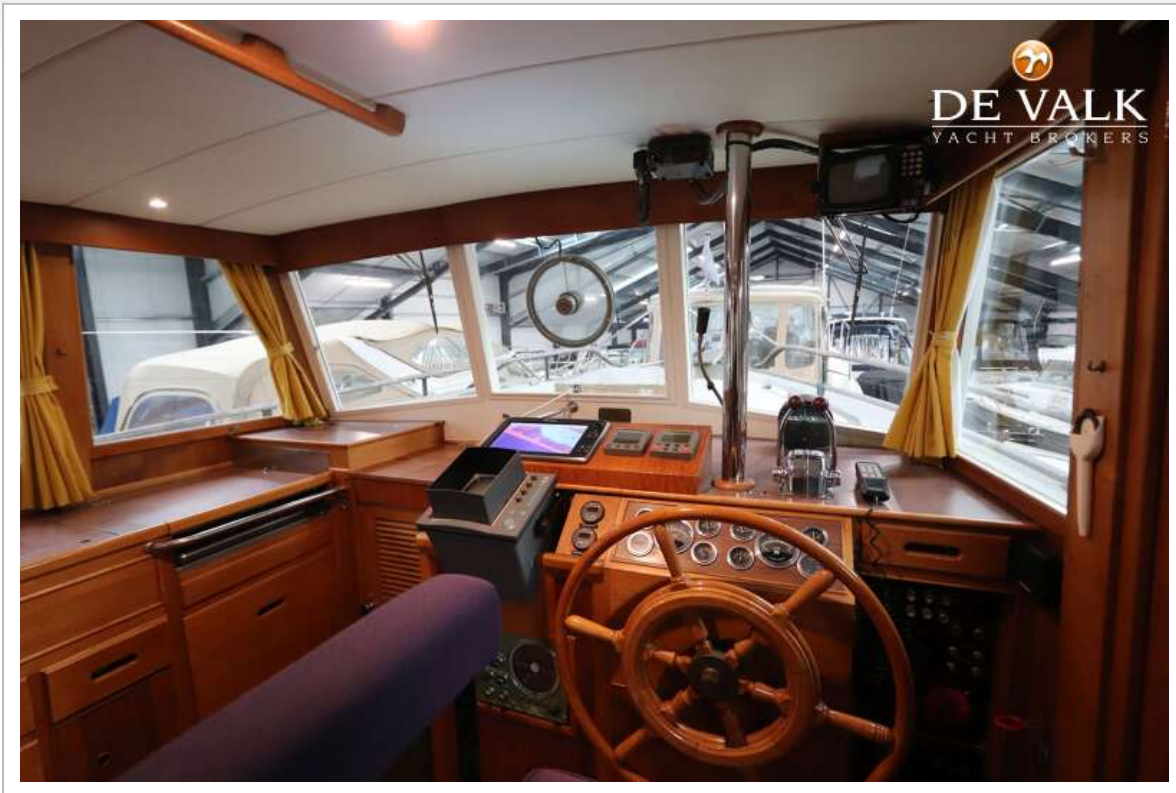
GRAND BANKS 42 CLASSIC



GRAND BANKS 42 CLASSIC



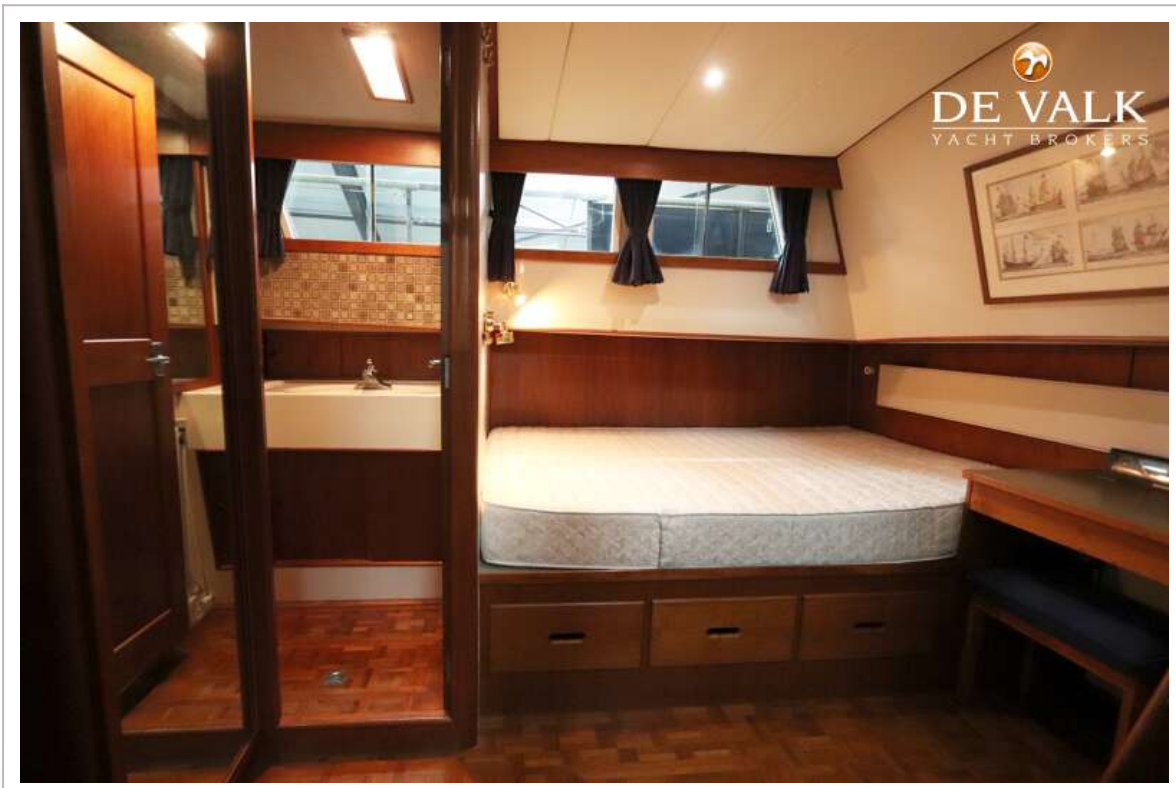
GRAND BANKS 42 CLASSIC



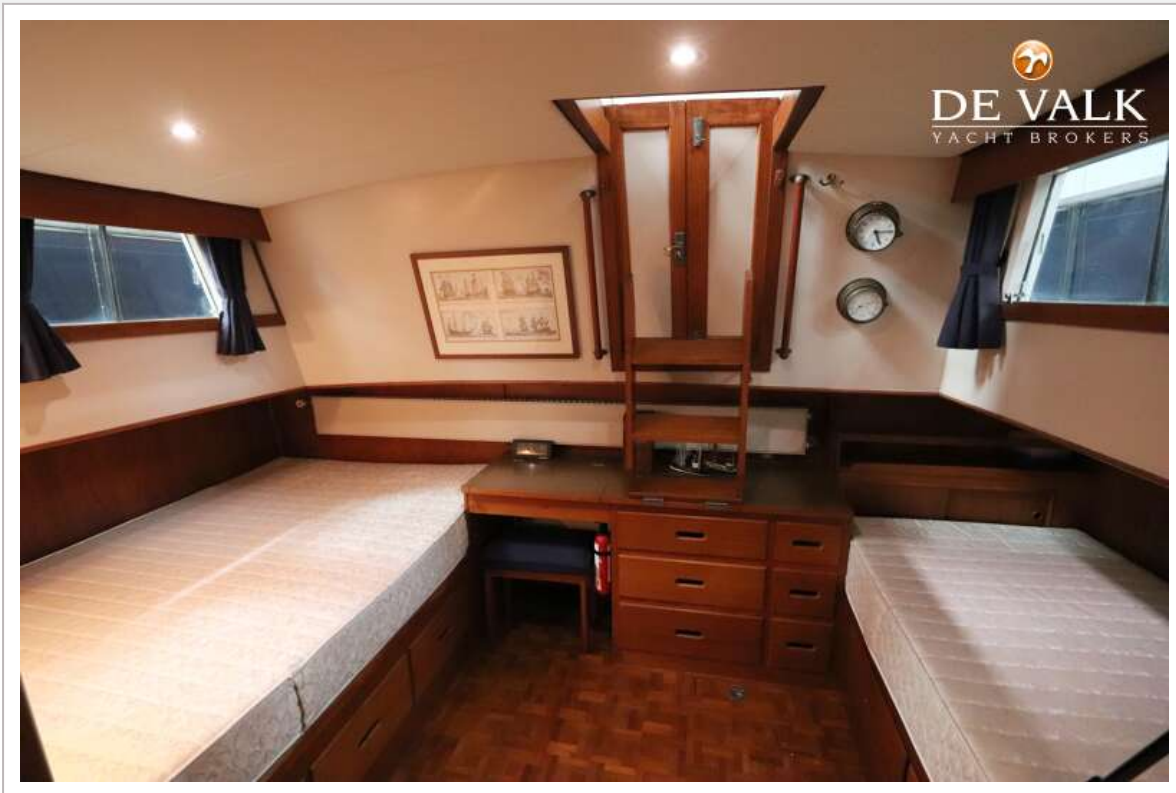
GRAND BANKS 42 CLASSIC



GRAND BANKS 42 CLASSIC



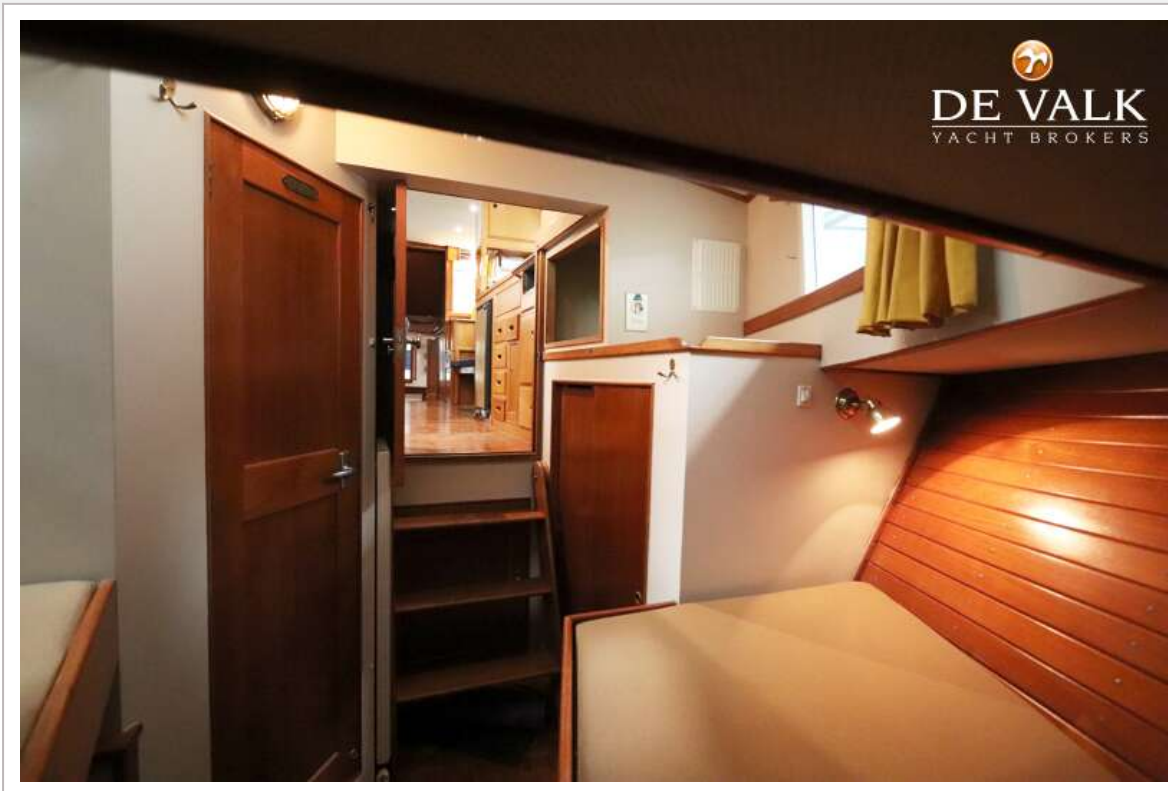
GRAND BANKS 42 CLASSIC



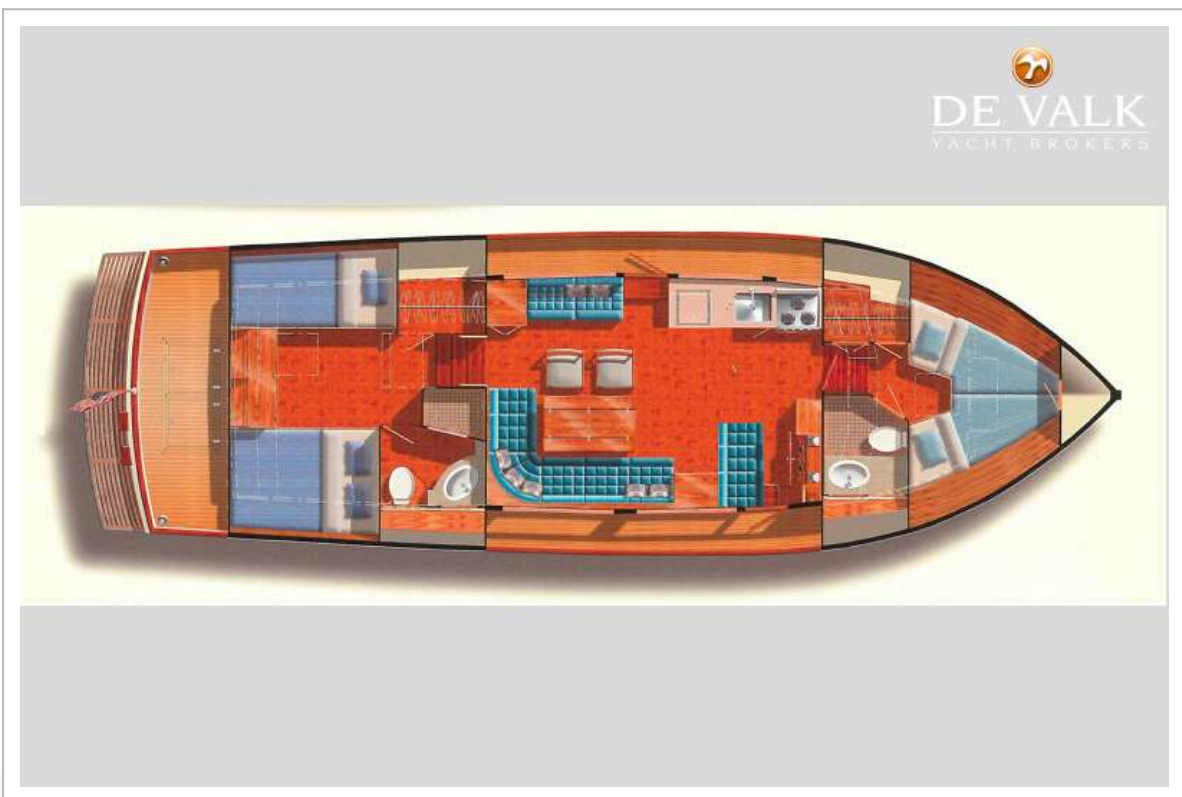
GRAND BANKS 42 CLASSIC



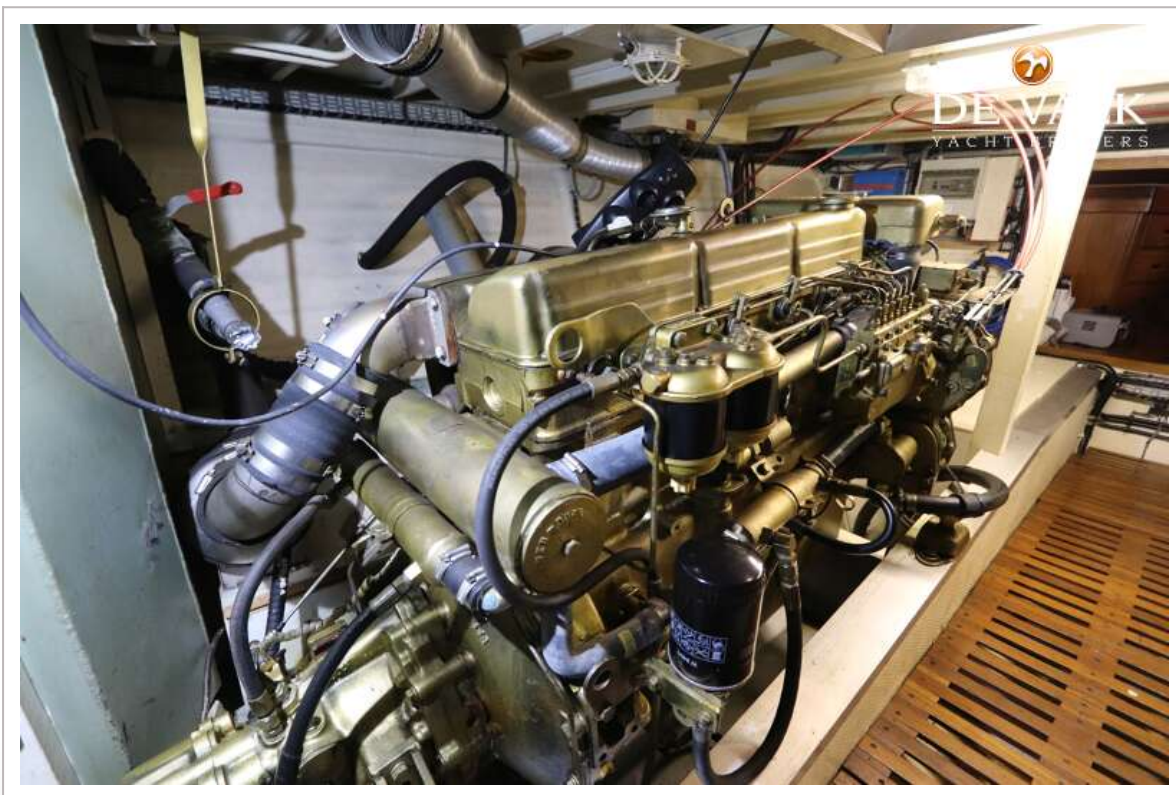
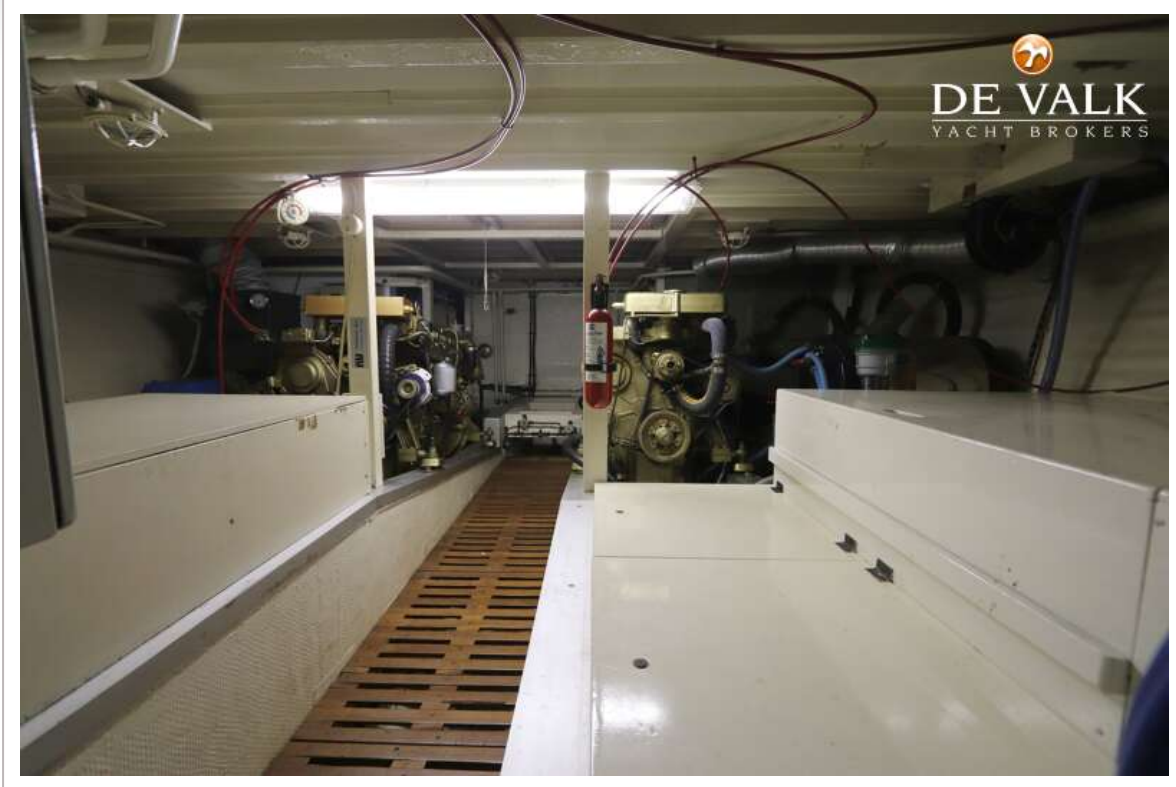
GRAND BANKS 42 CLASSIC



GRAND BANKS 42 CLASSIC



GRAND BANKS 42 CLASSIC



GRAND BANKS 42 CLASSIC



GRAND BANKS 42 CLASSIC

