



DE VALK
YACHT BROKERS



EXPLORER EXPEDITION VESSEL 85



DE VALK
YACHT BROKERS

EXPLORER EXPEDITION VESSEL 85

KOMMENTARE DES MAKLERS

The Sirius 85 explorer class combines traditional Dutch trawler design & engineering, double welded construction by certified welders and fitting of professional marine components & appliances. The Sirius 85 Explorer guarantees a sturdy seaworthy vessel capable to cruise all oceans in comfort and safety at an affordable purchase price and easy sailing with owner and wife. Lloyd's Register EMEA classifies the steel hull and aluminium superstructure and the optimised hull shape ensures an economical cruising speed of 9 knots with a range of 5,000 n.m.

Hans Visser

TECHNISCHE DATEN

Maße	25.80 x 6.60 x 1.60 (m)	Werft	Sinnautic BV
Baujahr	2011	Kabinen	3
Material	Stahl	Kojen	6
Motor(en)	1 x Iveco Aifo 8210 SRM 36 diesel	PS/kW	360.00 (PS), 264.60 (kW)
Verkaufspreis	€ 1.100.000 (MwSt. Nicht bezahlt)	Liegeplatz	beim Verkaufsbüro

KONTAKT

Verkaufsbüro	De Valk Hindeloopen	Telefon	+31 514 52 40 00
Adresse	Oosterstrand 1 8713 JS Hindeloopen The Netherlands	E-Mail	hindeloopen@devalk.nl

HAFTUNGSAUSSCHLUSS

Diese Angaben erfolgen nach bestem Wissen, können jedoch nicht garantiert werden.



ALLGEMEIN

Modell	EXPLORER EXPEDITION VESSEL 85
Typ	Motoryacht
Rumpflänge (m)	25,80
Wasserlinienlänge (m)	23,60
Breite (m)	6,60
Tiefgang (m)	1,60
Durchfahrtshöhe (m)	12,75
Durchfahrtshöhe min (m)	6,30
Stehhöhe (m)	2,20
Baujahr	2011
Lancierung	2011
Werft	Sinnautic BV
Land	Niederlande
Entwerfer	Gaastmeer design b.v.
Gewicht (t)	90
Ballast (Ton)	Ballast/trim tank 2.700 l in fore peak compartment
Netto tonnage	60 tons
CE Norm	NA
Rumpfmateral	Stahl
Rumpffarbe	Grau Repainted 2023
Haut-dicke Rumpf (mm)	7mm & 8mm & 10mm
Rumpfform	Multi Knikspant
Art Kiel	Dosenkiel
Schlengerkielen	Static stabelizers for comfort and beaching
Material Aufbauten	Aluminium
Haut-dicke Aufbauten (mm)	4, 5 & 6
Haut-dicke Deck (mm)	5 & 6
Stossliste	Edelstahl
Deckmaterial	Stahl
Deck Finish	Antirutsch Farbe Grey repainted 2021



EXPLORER EXPEDITION VESSEL 85

Deck Finish Aufbauten	Antirutsch Farbe Grey
Pflicht Bedeckung	Antirutsch Farbe Grey repainted 2021
Antifouling (Jahr)	2023
Fenster Einfassung	Aluminium
Fenster Material	Doppelverglasung Tainted 6 + 10 mm
Decks Luke	Freeman
Bullauge	Messing Stainless 12 mm & steel stormblinds
Isolation	Steinwolle Hull & main deck BASF Elastopor foam, Superstructure Rockwool
Mast legbar	hydraulik Main hydraulic, aft manual
Treibstofftank (Liter)	Stahl 13800 l. in 6 tanks
Treibstofftank 2 (Liter)	4.400 additional tank possible
Füllstandsanzeige (Treibstofftank)	ja
Treibstoff Tagestank (Liter)	Stahl 2060 liter included in the total
Füllstandsanzeige (Tagestank)	ja
Trinkwassertank (Liter)	Stahl 4.400 l.
Füllstandsanzeige (Trinkwasser)	ja
Fäkalien Tank (Liter)	Stahl 1.600 l.
Füllstandsanzeige (Fäkalientank)	Alarm only
Fäkalien Tankablauf	Pumpe
Grauwassertank (Liter)	Stahl Is the same as black water tank
Füllstandsanzeige (Grauwasser)	Alarm only
Radsteuerung	hydraulik Trydo twin cylinder with fishtail design rudder
Innerhalb Steuerung	ja
Weitere Info Rumpf	6 watertight compartments & 4 watertight central closing doors
Weitere Info	2 x outside bridge wing for easy manouvering & lookout
Weitere Info	Draft 1,55 @ 1/3 fuel and 100% water, fully loaded 1,60
Weitere Info	Built according Lloyds register including HC certificate & engin

UNTERKUNFT

Kabinen	3
----------------	---



EXPLORER EXPEDITION VESSEL 85

Kojen	6
Mannschaftskabine	Optional 2
Mannschaftskojen	Optional 4
Innen	Kirsche Ceilings Birch wood
Einteilung	Explorer with 120 m2 living space
Fussboden	Parkett Ash
Achterdeck	ja
Ruderhaus	ja
Decksalon	On the aft deck
Standhöhe Salon (m)	2,20
Schiebedach	elektrisch In pilothouse webasto
Heizung	Zentralheizung Kabola B25 Tap 29 kW.
Klima Anlage	Klima mit Ruckzyklus Mave 27300 BTU in all living spaces
Navigation Zenter	In the pilot house
Kartentisch	In the pilot house
Speisezimmer	In the salon
Schiebetür zum Cockpit	Freeman (dutch door) from saloon to aft deck
Tür zum Cockpit	Freeman dutch doors to side wings on each side of pilothouse
Tür zum Achterdeck	Freeman dutch door entrance to starboard side deck & salon aft
Kombüse	U shaped
Arbeitsfläche	Holz
Spülbecken	Edelstahl Double
Herd	4 burner gas stove
Ofen	ja
Gas-Alarm	BEP gas detection /alarm system
Mikrowelle	Stainless
Kuhlschrank	In galley 78 liter incl 7,5 l. freezer compartment
Gefrier Truhe	Fridge & freezer in technical room (40 l. each)
Weinkühler	40 l.
Warmwasser System	220V oder uber Heizung On Central heating & Isotherm 1500 W, 75 L. double coil boiler
Wasserdruck System	elektrisch 220VAC 50 l. capacity hydrofoor



Geschirrspulmaschine	For 8 couverts
Eismaschine	In pantry
Geschirrausstattung	For 8
Eignerkabine	Doppelbett Owners cabin
Länge Bett (m)	2.10 x 1.60
Kleiderschrank	hängend/Schublad/Regale
Badezimmer	en suite
Toilet	en suite & bidet
Toilette System	elektrisch
Handwaschbecken	im Badezimmer Double
Dusche	en suite
Weitere Info	A/C + heating in the cabin & forced ventilation in bathroom
Gästekabine 1	Doppelbett Vip Cabin
Länge Bett (m)	2.00 x 1.40
Kleiderschrank	hängend/Schublad/Regale
Badezimmer	gemeinsam
Toilette	gemeinsam
Toilette System	elektrisch
Handwaschbecken	im Badezimmer
Dusche	gemeinsam
Weitere Info	A/C & heating in cabin & forced ventilation in the bathroom
Gästekabine 2	Stockbett Guest cabin 1
Länge Bett (m)	2 x 2.00 x 0,90
Kleiderschrank	hängend und Schubladen
Badezimmer	gemeinsam
Toilette	gemeinsam
Toilette System	elektrisch
Handwaschbecken	im Badezimmer
Dusche	gemeinsam
Weitere Info	A/C & heating
Gästekabine 3	Currently used as storage cabin
Mannschaftskabine(n)	Currently in use as storage



Weitere Info	Large ships hold 3 x 5,5 x 2,2 just aft of the crew cabin
Waschmaschine	In the technical room
Waschmaschine/Trockner Kombi	ja
Bügelzubehör	ja
Weitere Info	Seperate deck acces for ships hold designed for toys/scuba
Weitere Info	Front storage can be converted into 2 additional cabins

MASCHINEN

Motoranzahl	1
Marke	Iveco Aifo
Typ	8210 SRM 36
PS	360
kW	264.60
Kraftstoffart	Diesel
Installiert im Jahr	2009
Höchstgeschwindigkeit (Kn)	10 knots
Marschgeschwindigkeit (Kn)	7,5 knots @ 1500 rpm
Verbrauch (l/h)	29
Reichweite (nm)	5000
Motorstunden	2600
Kühlungssystem Motor	indirekte Wärmetauscher Dry exhaust and COWL muffler with 2 3" SS AISI 316 strainers
Antrieb	Schraubenwelle
Welle Dichtung	Maxprom GS + emergency seal installed
Motor bedienung	elektrisch Straathof / ZF Microcommander
Gewende getriebe	hydraulic Twin Disk model MG 5075 SC with PTO for Hydraulic power
Sekundäre Motor	Diesel Iveco FPT NEF N45 100 for hydraulic power/ emergency genset
Motorsteuerung	elektrisch Straathof & ZF Microcommander electrical & remote control
Homer	Emergency powering sidepower SPH 550



Bugschraube	hydraulik Sidepower SPH 550 on auxillery engine powerpack with remote
Heckschraube	hydraulik Sidepower SPH 550 on auxillery engine powerpack with remote
Exhaust	wassergekühlt
Wellen Drucklager	Centa AGM 400
Propeller Typ	fest Exalto HS aquaprop oversized for economical cruise @ 7,5 knots
Propellerblätter	4
Material Propellerwelle	Edelstahl Exalto C45/ 90 mm. stainles steel 120 mm long
Propellerwelle schmierung	Wasser
Elektrische Bilgenpumpe	2 x 400 VAC Varisco J2-180TWG s2 speed/ waist/bilge/fire pumps
Bilge Alarm	ja
Elektrische Anlage	12 & 24 V DC 240 & 400 V AC with 140 Ah 24 V alternator on main
Generator	leise Separator Northern Lights 16 Kva 3 phase @ 1500 rpm 400 V. 50 hz.
Betriebstunden Generator	910
Generator 2	leise Separator 8,5 Kva 3 phase @ 3000 rpm 400 V 50 hz on auxillery Iveco engine
Betriebstunden Generator 2	337
Batterien	Hawker batteries 1200 Amp 24 Volt (2010) No longer servicable
Starterbatterie	2 x 12 V 200 AH for main 24 V (2019)
Versorgungsbatterie	Backup Whisperpower 1600 Amp 24 V (2016)
Generatorbatterie	24V 140 Ah auxilloery 24V & 12V 70 Ah generator (both 2019)
Batterie Monitor	Victron bat. mon. BMV602 & WP pro battery monitor
Batterie Ladegerat	1 x Victron skylla 24 V 100 Ah, 1 x whisperpower power cube 150
Umwandler	2 x Victron Phoenix 3000, 1 x Mastervolt powecube 24V 7000
Landstrom	mit Kabel
Trenn transformator	220 V AC (3000W & 400VAC (16 Kva)
Wasserbereiter	Bluewater explorer 140 l/h. (needs new membrane)



Stabilisatoren	0-speed MATS hydraulic actuated fins on engine PTO and zero speed mode
Weitere Info	Manifolds and Valves from Econosto global valve type
Weitere Info	2 x alarm panel (24 functions) in wheel house & technical cabin
Weitere Info	1 x 400 VAC secondary bilge/waste/ pump Varisco EP J40TWG

NAVIGATION

Elektrisches Kompass	Simrad RC42
Tiefenanzeige	Simrad IS 15
Logge	Simrad IS 15
Windlupe anzeige	Simrad IS 20
Tochter anzeige	Simrad IS20 rudder angle indicator
UKW	2 x Simrad RS25
Portabel UKW	Simrad HT50
Autopilot	Simrad AP50 + remote GS42, & Simrad IS20 course indicator
Ruderwinkel Anzeige	Simrad IS20
Radar	1 x Simrad BR24 broadband & 1 x Simrad 6 kW
GPS	Simrad GS15 & Simrad HS70 DGPS compass
Plotter	2 x VDS 319 glass bridge 1 x 17 " & 1 x 19 "
Radar/GPS/Plotter	2 x Simrad NSO50 + OP40
Elektronische Kart(en)	Navionics Gold
AIS Transceiver	EM-TRTAK A 200 Alphantron 2023
Epirb	NEB 2000C class 2 (2016)
Kamera	Orlaco rear view camra port & starboard
Navigation Beleuchtung	DHR
Suchscheinwerfer	USHIO XB-150 remote
Weitere Info	Pro. Hornn Whisle-Tyfun kockum Sonic ETD 100-350 + auto control
Weitere Info	SART Debeg 5900 (old)

AUSRÜSTUNG



EXPLORER EXPEDITION VESSEL 85

Sturm Fenstern	ja
Sonnenschirm	3 sun shade canopies forecastle, main deck and aft deck.
Cockpit Polster	ja
Cockpit Tisch	ja
Cockpit Sessel	ja
Badeplattform	ja
Badeleiter	Aluminium
Heck-Tur	Converts to platfoirm
Gangway	ja
Heckdusche	ja
Anker	160 kg D' Hone
Ankerkette	18 mm 160 m.
Anker 2	160 kg D' Hone
Ankerkette	18 mm 120 m.
Ketten Zähler	Autoanchor 710 chaincounter with remote control on port chain
Ankerwinde	hydraulik Data Danfoss 2150 kg
Deckwasche	ja
Beiboot	Optional Rib and rescue sloop
Ausserborder	Optional
Deck Kran	hydraulik Lagendijk1250 kg (max extend) elec. hydr. 400VAC with remote
See Reling	Edelstahl
Zupackenschiene (aufbauten)	Aluminium
Seiten-Einstieg Seereling	ja
Rettungsinsel	Container Viking resc pro ISO pack II
Rettungsinsel (Pers)	Container 6
Letzte Wartung Rettungsinsel	2021
Schwimvesten	3 x Secumar (need service)
Sicherheits Rustung	IN LIFE JACKET
Rettungsboje	2 X One with light
Leinenschneider	ja
Scheibenwischer	5 x Exalto type 233BD Panto with autocontrol & wash down



EXPLORER EXPEDITION VESSEL 85

Horn	ja
Fenderkissen	ja
Festmacher	ja
Reserve Teilen	ja
Werkzeug	ja
Alarmsystem	ja
TV	Reflexion 32" no antenna
Radio-CD Spieler	ja
DVD Spieler	In TV
Feuerloscher	3 x 6 kg powder, 1 x 2kg foam, 1 x 5 kg Co2,
Feuerloscher in Maschine Raum	ja
Automatische Löschesystem	Rola FM 200/760 in engine room
Weitere Info	2 x Fire Hydrant + hose and nozzles on deck
Weitere Info	1 x 220VAC portable submersable pump, Gundfoss KP250 stainless
Weitere Info	1 x 220VAC fuel transfer pump SAER PC250EM

RIGG

Rig	Steel forward mast + spreader doubles as hydraulic crane
Material Mast	Aluminium Aft mast
Mastlege Vorrichtung	Both masts, aft manual
Weitere Info	Ample space for daysailer on deck



EXPLORER EXPEDITION VESSEL 85

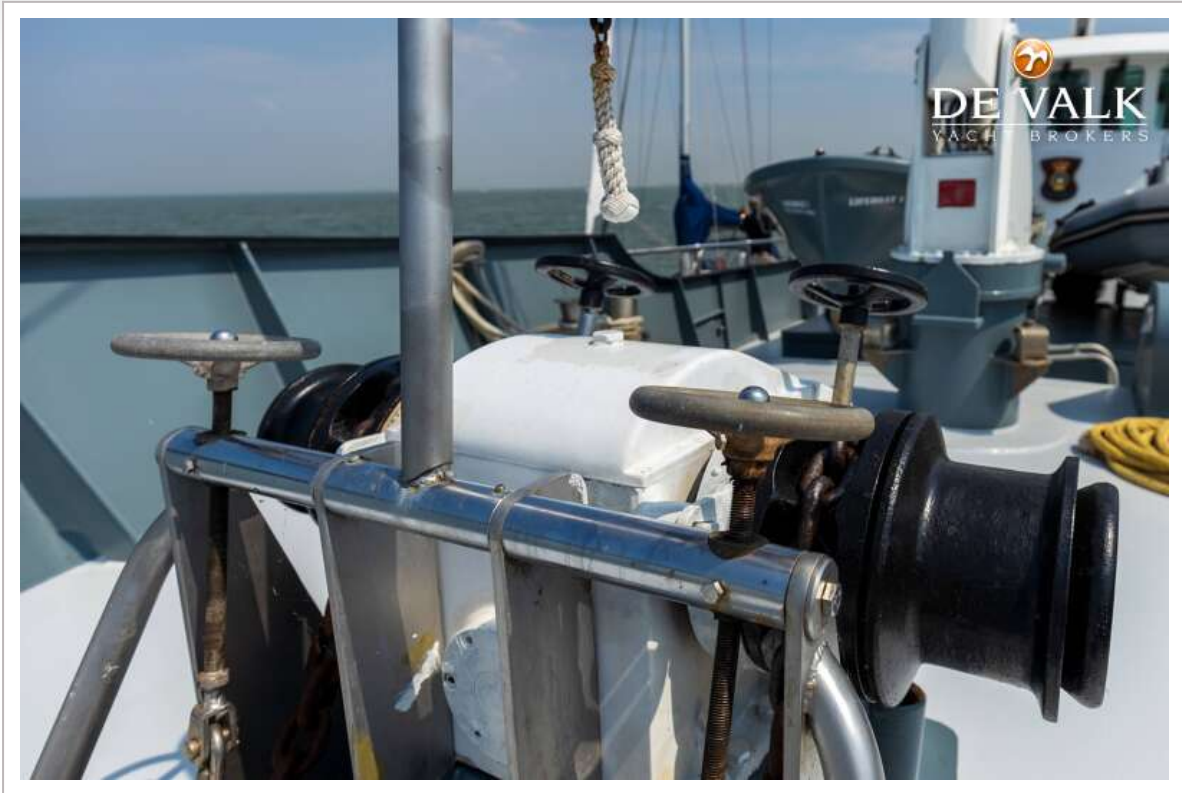


EXPLORER EXPEDITION VESSEL 85



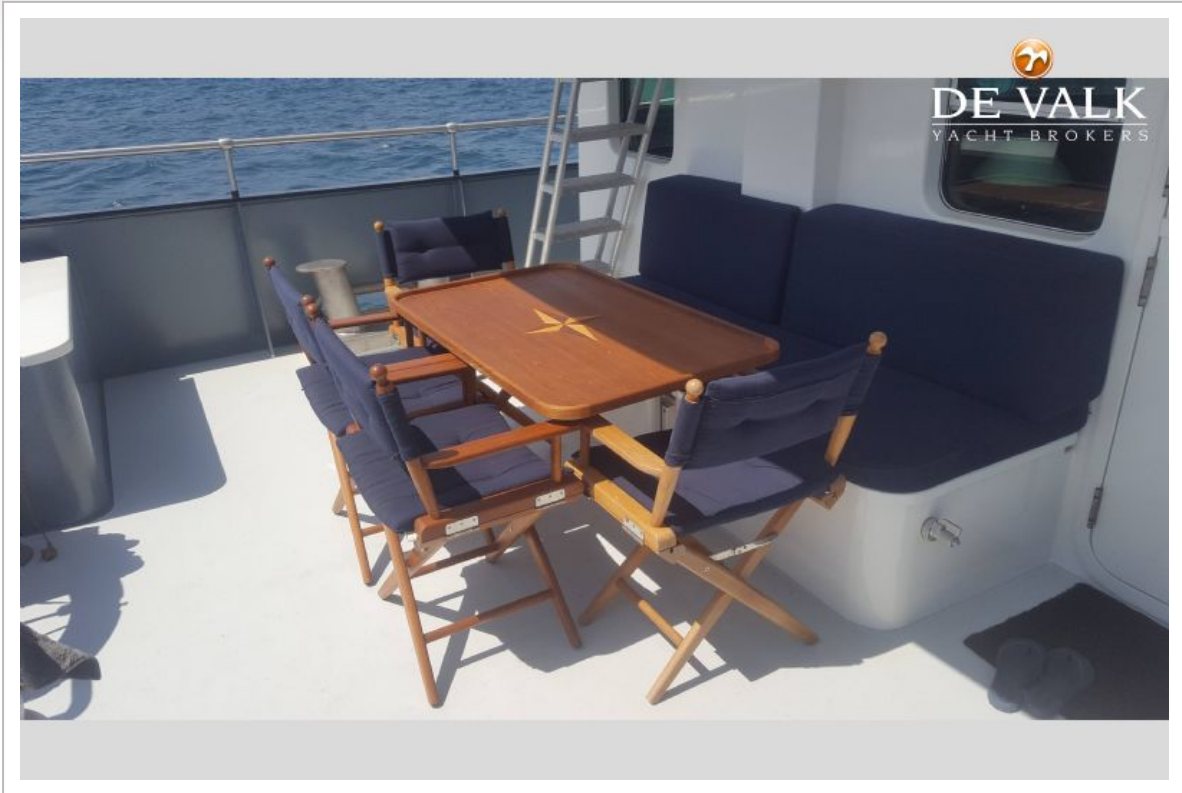
EXPLORER EXPEDITION VESSEL 85



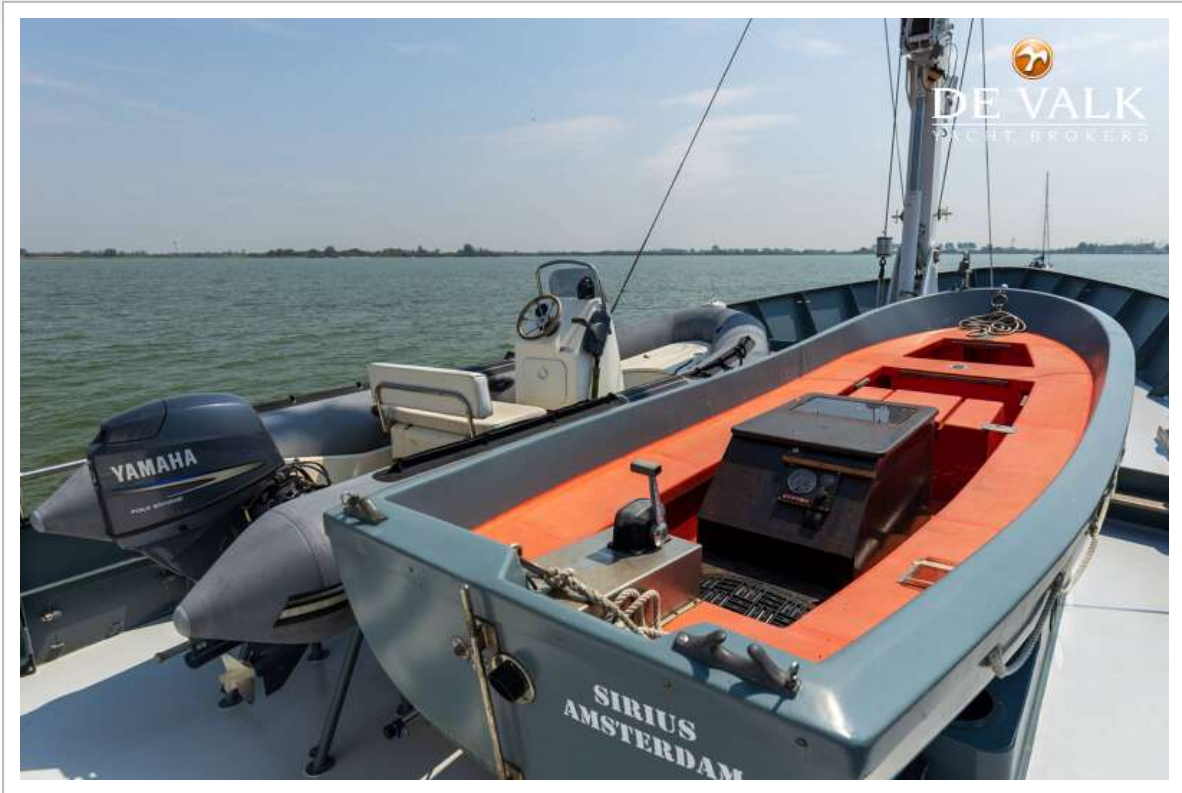




EXPLORER EXPEDITION VESSEL 85



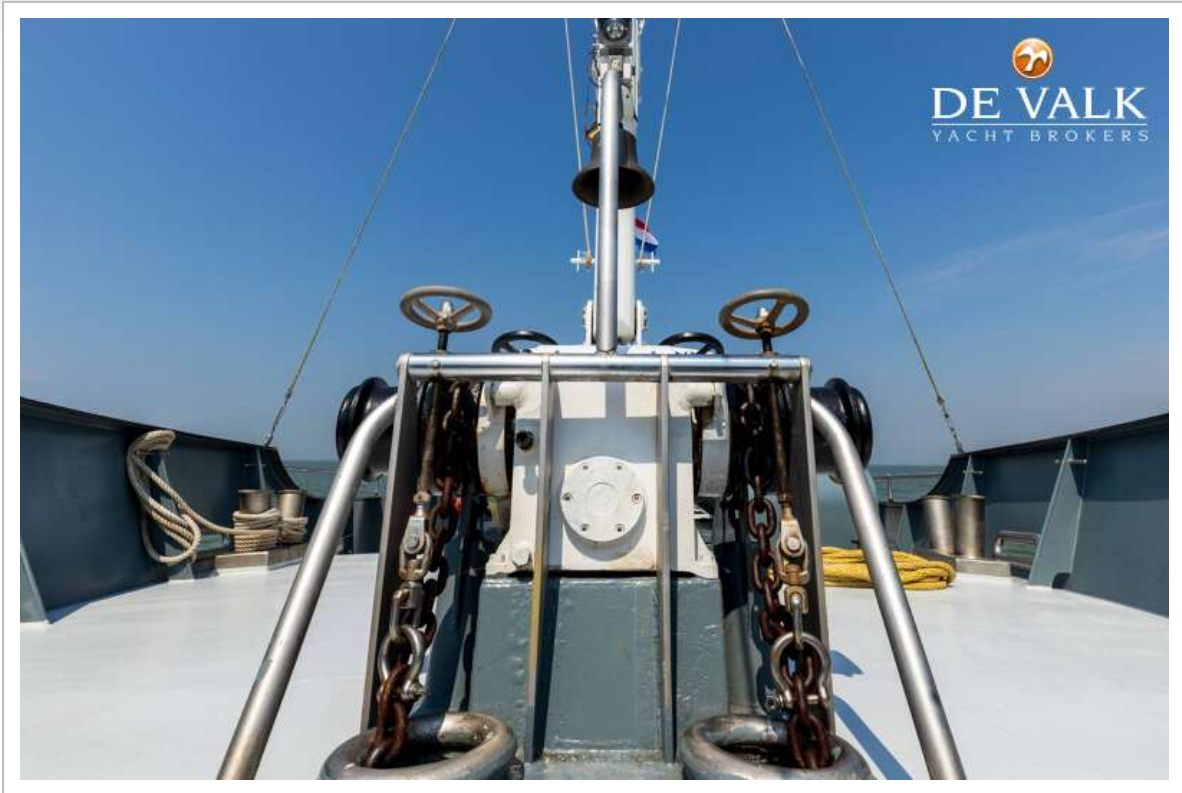
EXPLORER EXPEDITION VESSEL 85



EXPLORER EXPEDITION VESSEL 85



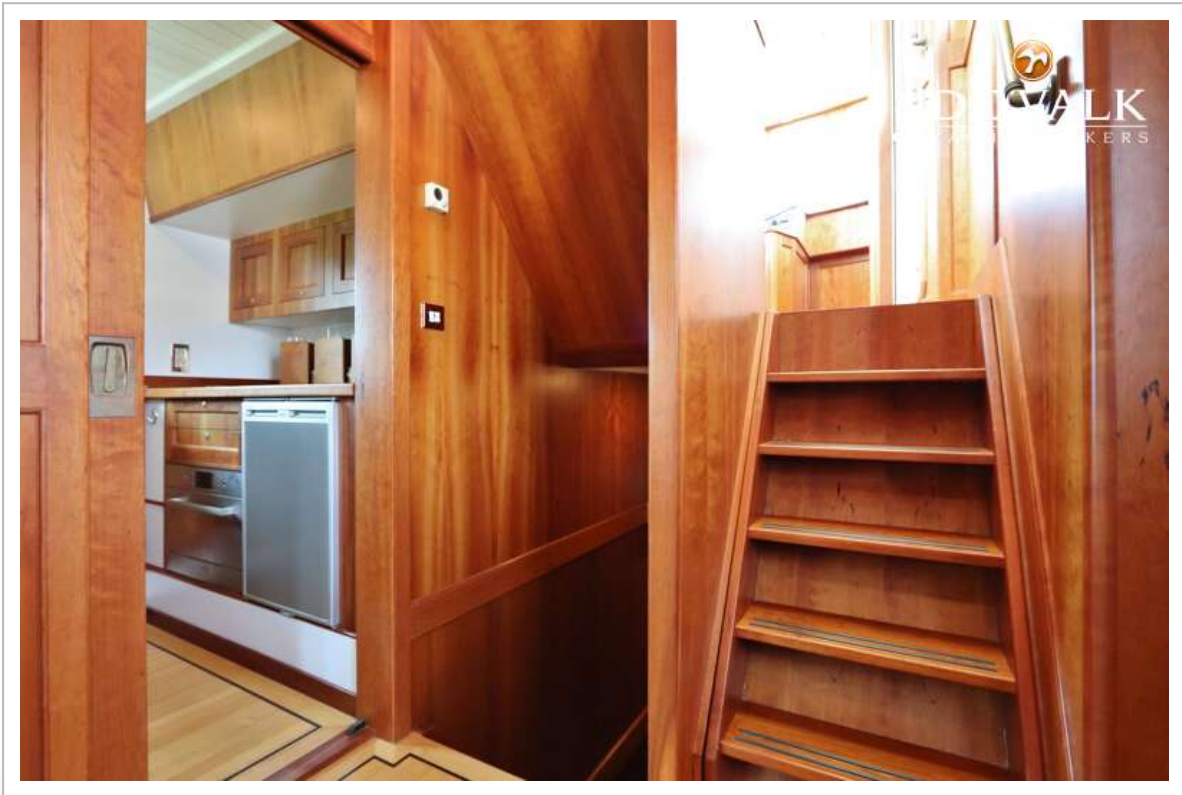
EXPLORER EXPEDITION VESSEL 85



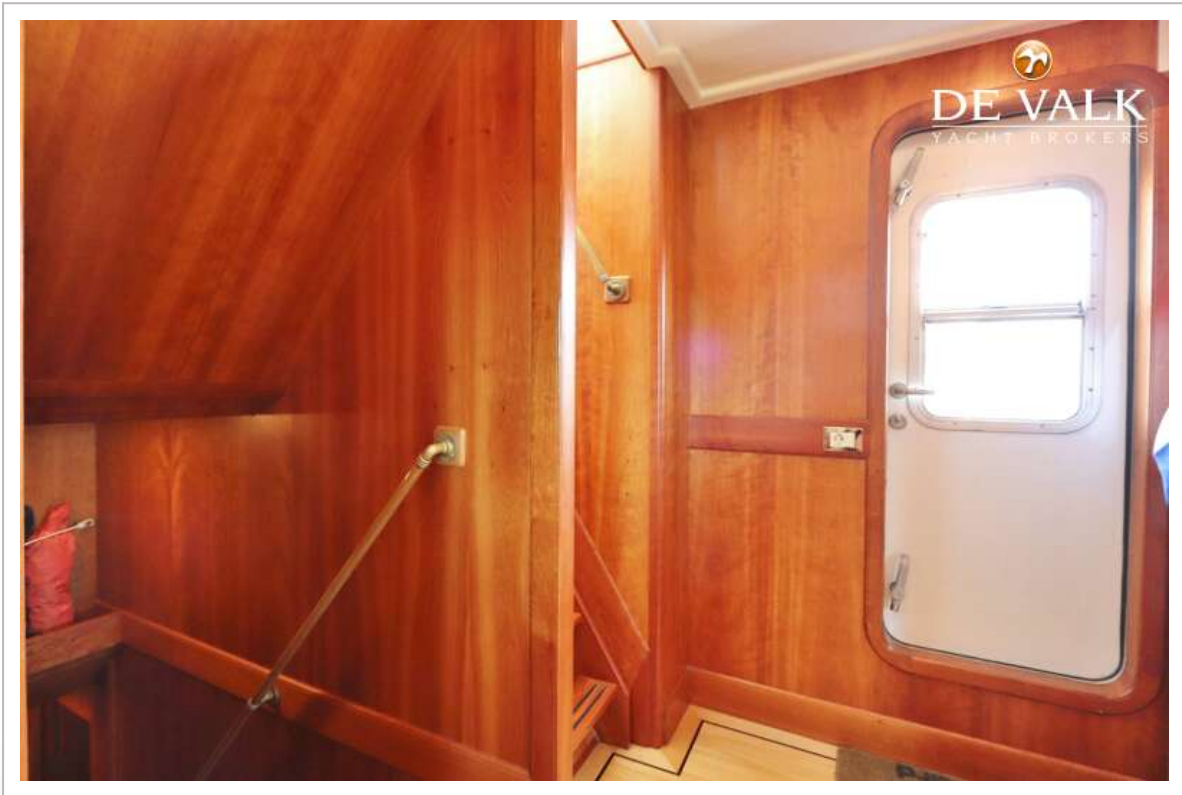
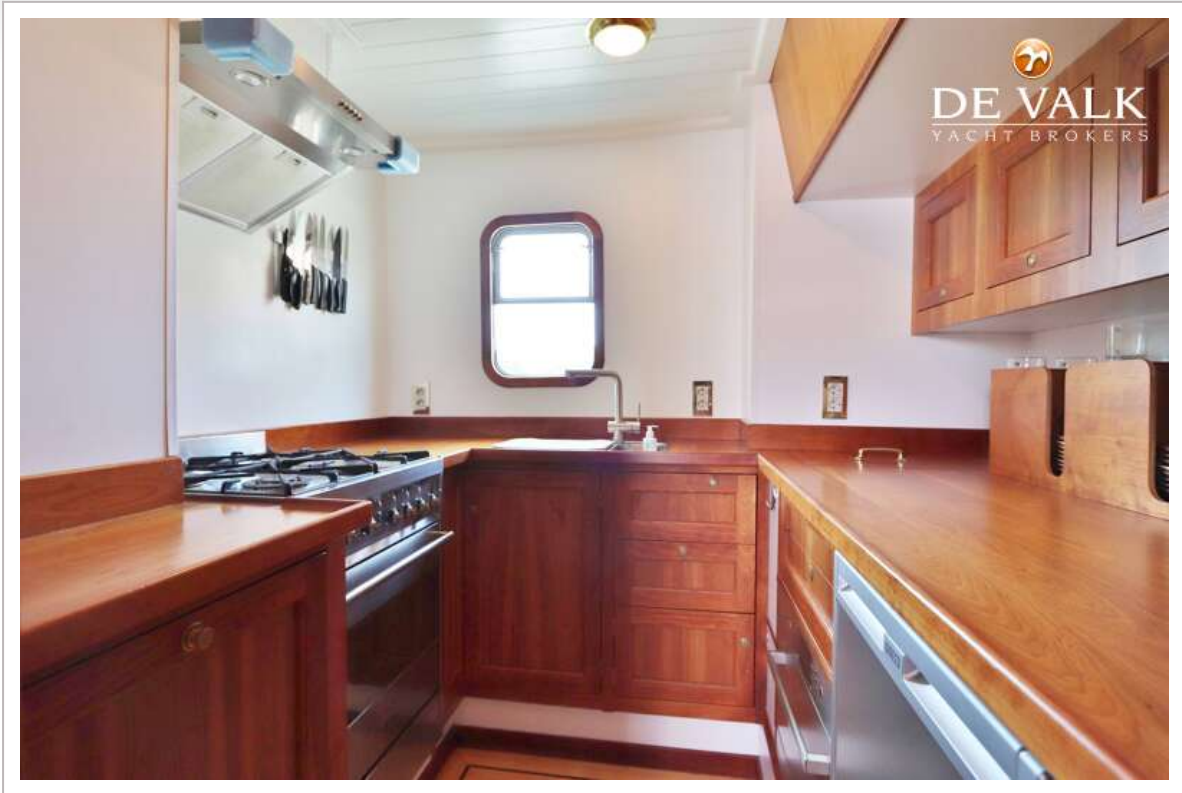
EXPLORER EXPEDITION VESSEL 85



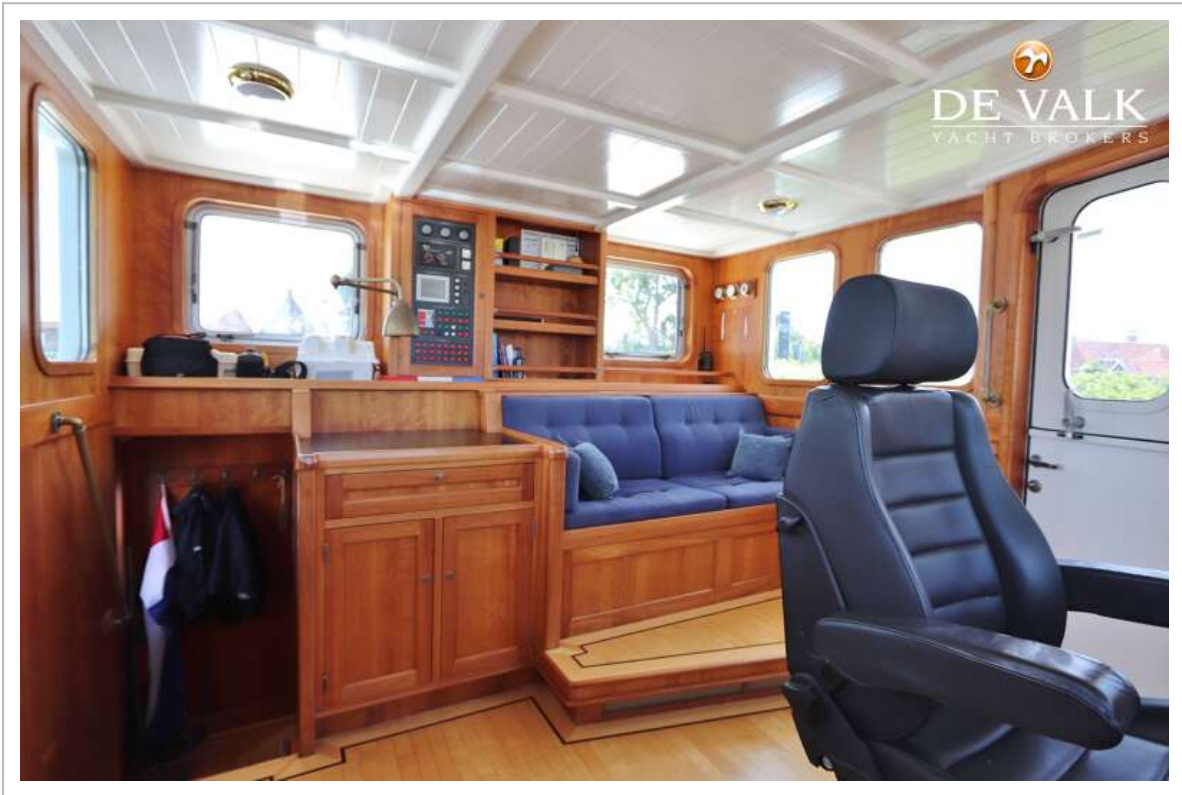
EXPLORER EXPEDITION VESSEL 85



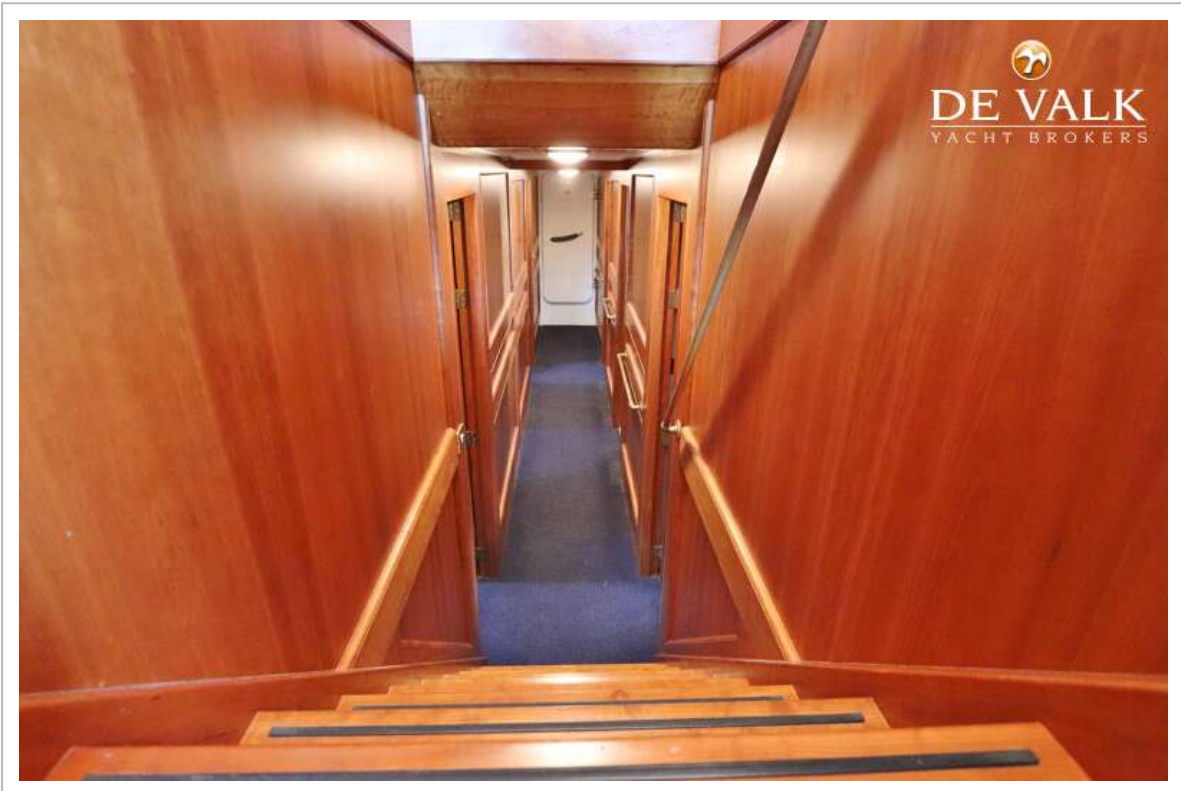
EXPLORER EXPEDITION VESSEL 85



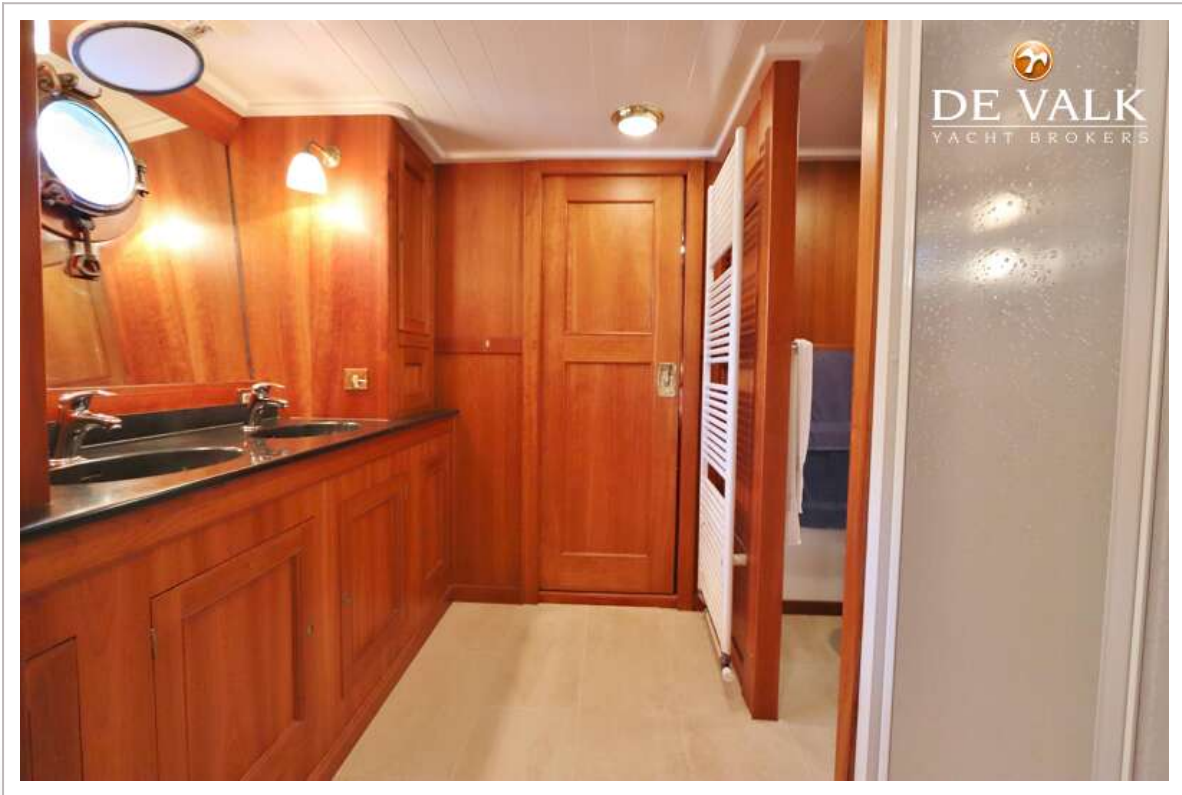
EXPLORER EXPEDITION VESSEL 85

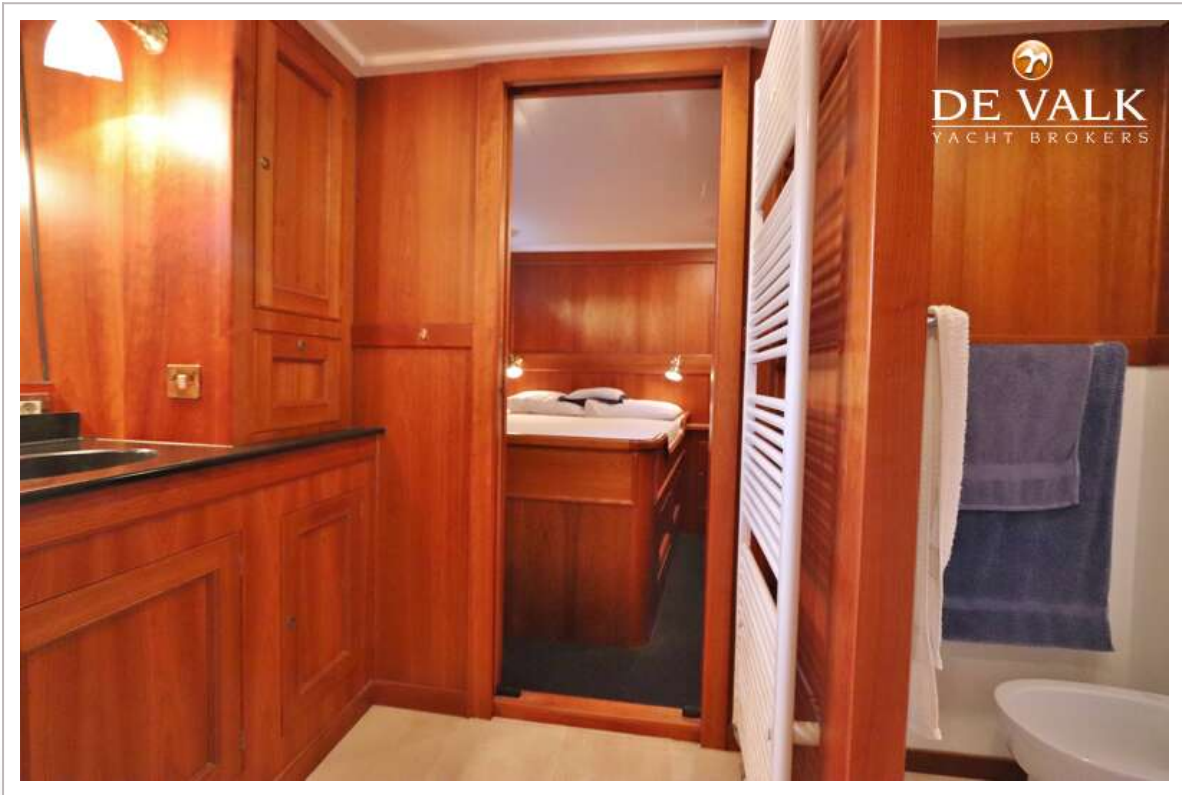
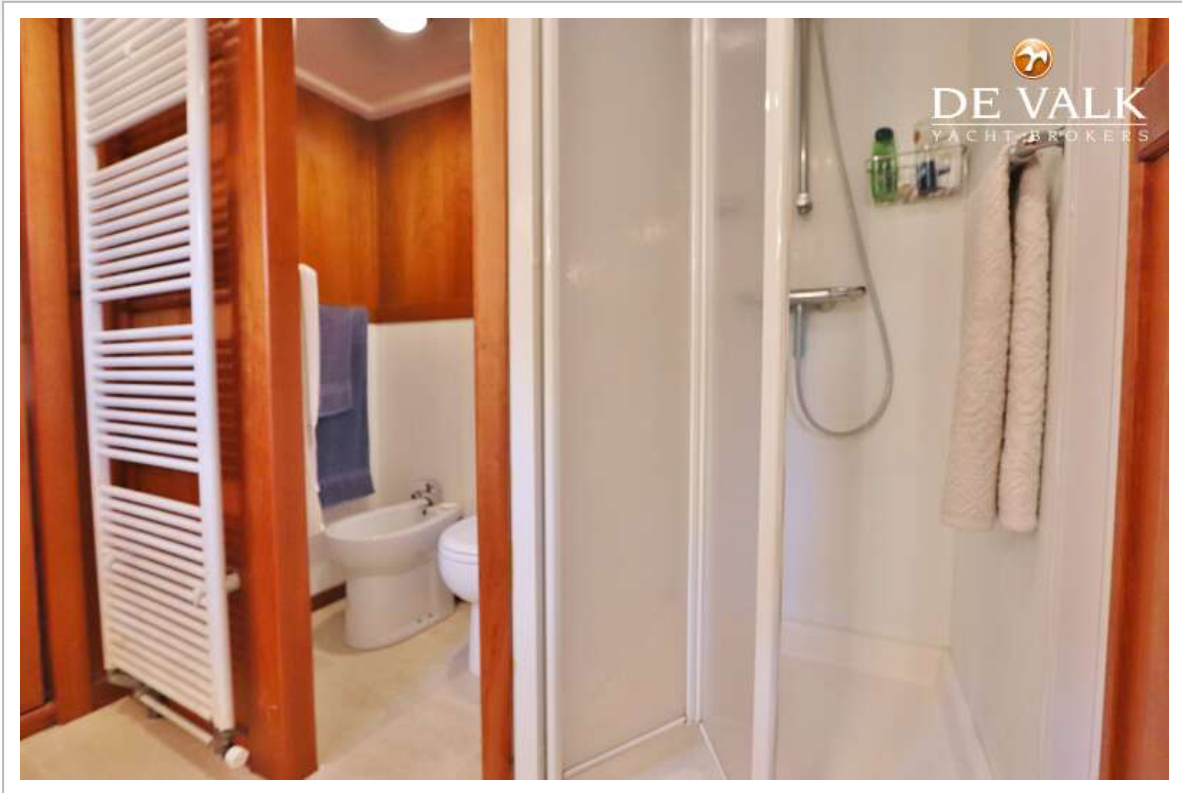


EXPLORER EXPEDITION VESSEL 85



EXPLORER EXPEDITION VESSEL 85





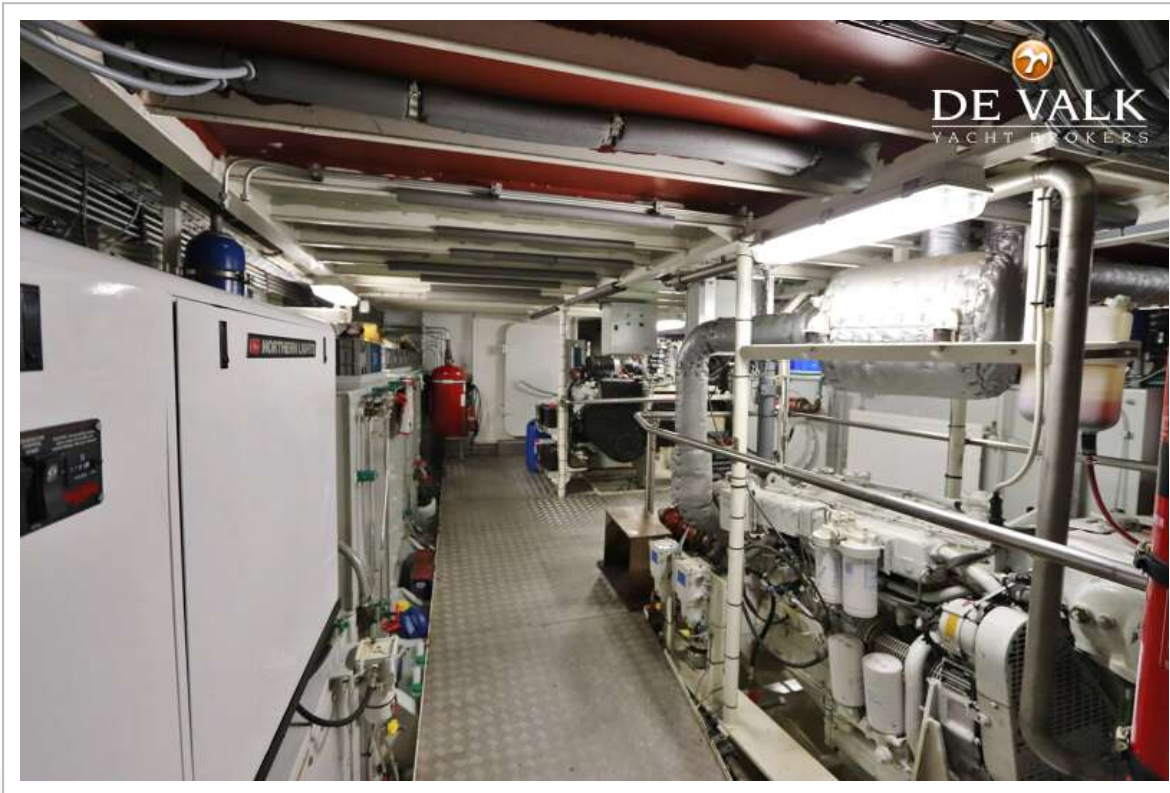
EXPLORER EXPEDITION VESSEL 85



EXPLORER EXPEDITION VESSEL 85




DE VALK
YACHT BROKERS




DE VALK
YACHT BROKERS



