



DE VALK
YACHT BROKERS



ONE OFF LUXE KOMPIER SPITSGATKOTTER 1650



DE VALK
YACHT BROKERS

ONE OFF LUXE KOMPIER SPITSGATKOTTER 1650

KOMMENTARE DES MAKLERS

This beautiful One Off Kompier Kotter 16.50 "Rosephine" is very solid, overcomplete and finished in all luxury. This beautiful motor yacht is well maintained and has recently undergone an extensive refit. The ship has largely new glazing, a preventive overhauled hydraulic bow thruster, electric cooking and bowthruster remote controled, new kitchen worktop and new upholstery. The entire exterior has been painted. The vessel is equipped with two reliable John Deere engines and two Northern Light generators with very few operating hours.

Mark Hesselmans

TECHNISCHE DATEN

| | | | |
|----------------------|----------------------------|-------------------|------------------------------|
| Maße | 16.50 x 4.90 x 1.60 (m) | Werft | Kompier Werf, Woerden |
| Baujahr | 1993 | Kabinen | 3 |
| Material | Stahl | Kojen | 7 |
| Motor(en) | 2 x John Deere 6068 diesel | PS/kW | 2 x 180.00 (PS), 132.48 (kW) |
| Verkaufspreis | € 545.000 (MwSt. Bezahlt) | Liegeplatz | beim Verkaufsbüro |

KONTAKT

| | | | |
|---------------------|--|----------------|----------------------|
| Verkaufsbüro | De Valk Loosdrecht | Telefon | +31 35 582 90 30 |
| Adresse | 't Breukeleveense Meentje 6 1231 LM Loosdrecht / Wijdmeren The Netherlands | E-Mail | loosdrecht@devalk.nl |

HAFTUNGS AUSSCHLUSS

Diese Angaben erfolgen nach bestem Wissen, können jedoch nicht garantiert werden.



ONE OFF LUXE KOMPIER SPITSGATKOTTER 1650

ALLGEMEIN

| | |
|---------------------------------|--|
| Modell | ONE OFF LUXE KOMPIER SPITSGATKOTTER 1650 |
| Typ | Motoryacht |
| Rumpflänge (m) | 16,50 |
| Breite (m) | 4,90 |
| Tiefgang (m) | 1,60 |
| Durchfahrtsöhe min (m) | 3,45 |
| Stehhöhe (m) | 1,96 |
| Baujahr | 1993 |
| Werft | Kompier Werf, Woerden |
| Land | Niederlande |
| Entwerfer | Behage |
| Gewicht (t) | 40 |
| Rumpfmateriäl | Stahl |
| Rumpffarbe | Weiß |
| Rumpfform | Rundspant |
| Art Kiel | Dosenkiel |
| Material Aufbauten | Stahl |
| Stossliste | Edelstahl |
| Deckmaterial | Stahl |
| Deck Finish | Antirutsch Farbe |
| Deck Finish Aufbauten | Antirutsch Farbe |
| Antifouling (Jahr) | 2023 Epifanes Foul Away |
| Fenster Einfassung | kunststoff 2022 |
| Fenster Material | Doppelverglasung 2022 |
| Bullauge | Aluminium Hora |
| Isolation | Glaswolle |
| Flybridge | ja |
| Radar Träger | klappbar |
| Treibstofftank (Liter) | Edelstahl 2000 L |
| Treibstofftank 2 (Liter) | Edelstahl 2000 L |



ONE OFF LUXE KOMPIER SPITSGATKOTTER 1650

| | |
|------------------------------------|---------------------------------|
| Füllstandsanzeige (Treibstofftank) | ja |
| Trinkwassertank (Liter) | Edelstahl 2000 L |
| Füllstandsanzeige (Trinkwasser) | ja |
| Fäkaelien Tank (Liter) | Stahl 500 L |
| Fäkaelien Tankablauf | Pumpe |
| Radsteuerung | hydraulik |
| Innerhalb Steuerung | ja |
| Aussen Steuerung | hydraulik |
| Weitere Info Farbe und Anstrich | 2022/2023 De IJssel Double Coat |
| Weitere Info | ja |

UNTERKUNFT

| | |
|---------------------------|------------------------|
| Kabinen | 3 |
| Koijen | 7 |
| Innen | Eichen White wash |
| Fussboden | Teppich 2023 |
| Offenen Cockpit | ja |
| Ruderhaus | ja |
| Decksalon | ja |
| Salon | ja |
| Standhöhe Salon (m) | +/- 1,96 m |
| Heizung | Diesel Heißluft Kabola |
| Klima Anlage | Klima einzel Funktion |
| Tür zum Cockpit | Teak varnished |
| Kombüse | ja |
| Arbeitsfläche | Neolith 2023 |
| Spülbecken | Edelstahl |
| Mikrowelle/Backofen Kombi | Bauknecht |
| Kuhlschrank | 2023 Isotherm |
| Gefrier Truhe | In Fridge |
| Warmwasser System | uber Heizung Kabola |



ONE OFF LUXE KOMPIER SPITSGATKOTTER 1650

| | |
|----------------------|--------------------|
| Wasserdruck System | elektrisch |
| Geschirrspulmaschine | 2023 |
| Eignerkabine | Französisch Bett |
| Länge Bett (m) | 2,00 x 1,90 |
| Kleiderschrank | Regale und hängend |
| Badezimmer | en suite |
| Toilet | en suite |
| Toilette System | elektrisch |
| Handwaschbecken | im Badezimmer |
| Badewanne | en suite |
| Jacuzzi | In the bathroom |
| Gästekabine 1 | Doppelbett |
| Länge Bett (m) | 2,00 x 1,95 |
| Kleiderschrank | Regale |
| Badezimmer | gemeinsam |
| Toilette | gemeinsam |
| Toilette System | elektrisch |
| Handwaschbecken | im Badezimmer |
| Dusche | gemeinsam |
| Gästekabine 2 | Stockbett |
| Länge Bett (m) | 1,95x1,05 |
| Kleiderschrank | Regale |
| Toilette | gemeinsam |
| Toilette System | elektrisch |
| Handwaschbecken | auf der Toilette |
| Waschmaschine | Candy |
| Flybridge | ja |

MASCHINEN

| | |
|-------------|------------|
| Motoranzahl | 2 |
| Marke | John Deere |



ONE OFF LUXE KOMPIER SPITSGATKOTTER 1650

| | |
|------------------------------------|---|
| Typ | 6068 |
| PS | 180 |
| kW | 132.48 |
| Kraftstoffart | Diesel |
| Installiert im Jahr | 1993 |
| Überholung im Jahr | April 2023 both engines and generators serviced |
| Motorstunden | 1127 & 1122 |
| Kühlungssystem Motor | Behälter Kühlung |
| Antrieb | Schraubenwelle |
| Welle Dichtung | ja |
| Motor bedienung | elektrisch |
| Gewende getriebe | hydraulic |
| Bugschraube | hydraulik Overhauled in 2023 |
| Exhaust | trocken |
| Propeller Typ | fest |
| Propellerblätter | 4 |
| Material Propellerwelle | Edelstahl |
| Propellerwelle schmierung | Öl |
| Elektrische Bilgenpumpe | Jabsco |
| Bilge Alarm | ja |
| Elektrische Anlage | 12/24/220 |
| Generator | Northern Light |
| Betriebsstunden Generator | 50 |
| Generator 2 | Northern Light |
| Betriebsstunden Generator 2 | 214 |
| Batterien | ja |
| Starterbatterie | 2023 2x Bosch Heavy Duty |
| Versorgungsbatterie | 4x |
| Generatorbatterie | 2x Bosch |
| Batterie Monitor | Mastervolt |
| Batterie Ladegerat | 24/100 |
| Umwandler | Mastervolt |



| | |
|-------------------------|-----------|
| Dioden-Batterie-Koppler | ja |
| Landstrom | mit Kabel |

NAVIGATION

| | |
|------------------------|------------------|
| Elektrisches Kompas | Logic Combi |
| Tiefenanziege | Logic Combi |
| Logge | Logic Combi |
| Windlupe anzeige | Logic Combi |
| UKW | Shipmate RS 8300 |
| Autopilot | VDO |
| Ruderwinkel Anzeige | ja |
| Radar | ja |
| Navigation Beleuchtung | ja |

AUSRÜSTUNG

| | |
|---------------------------|--------------------------|
| Cockpit Tisch | ja |
| Cockpit Sessel | ja |
| Anker | ja |
| Ankerkette | ja |
| Ankerwinde | elektrisch 24V |
| Deckwasche | ja |
| Deck Kran | elektrisch Not Connected |
| See Reling | Edelstahl |
| Seiten-Einstieg Seereling | ja |
| Scheibenwischer | 3x electric |
| Klar Sicht Scheibe | ja |
| Rahmen heizung | ja |
| Horn | Luftdruck |
| Horn Schonbezug | ja |
| Fenderkissen | ja |
| Festmacher | ja |



TV

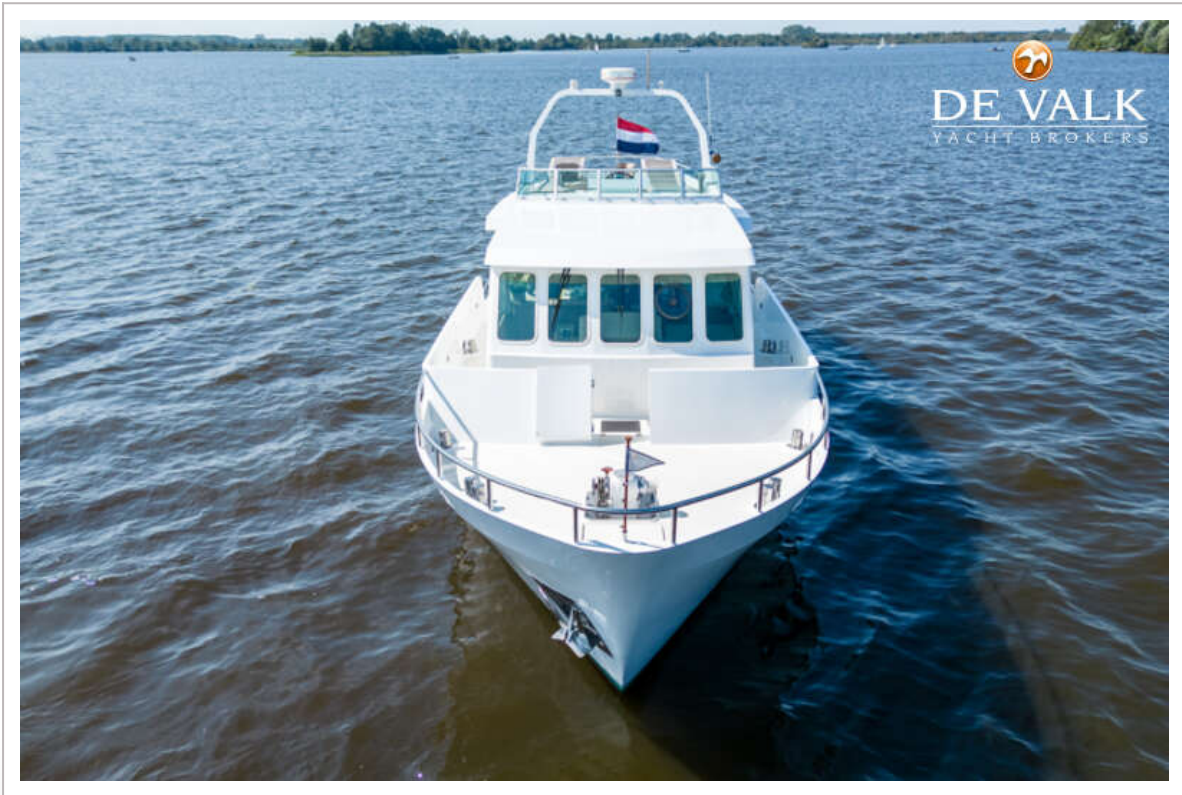
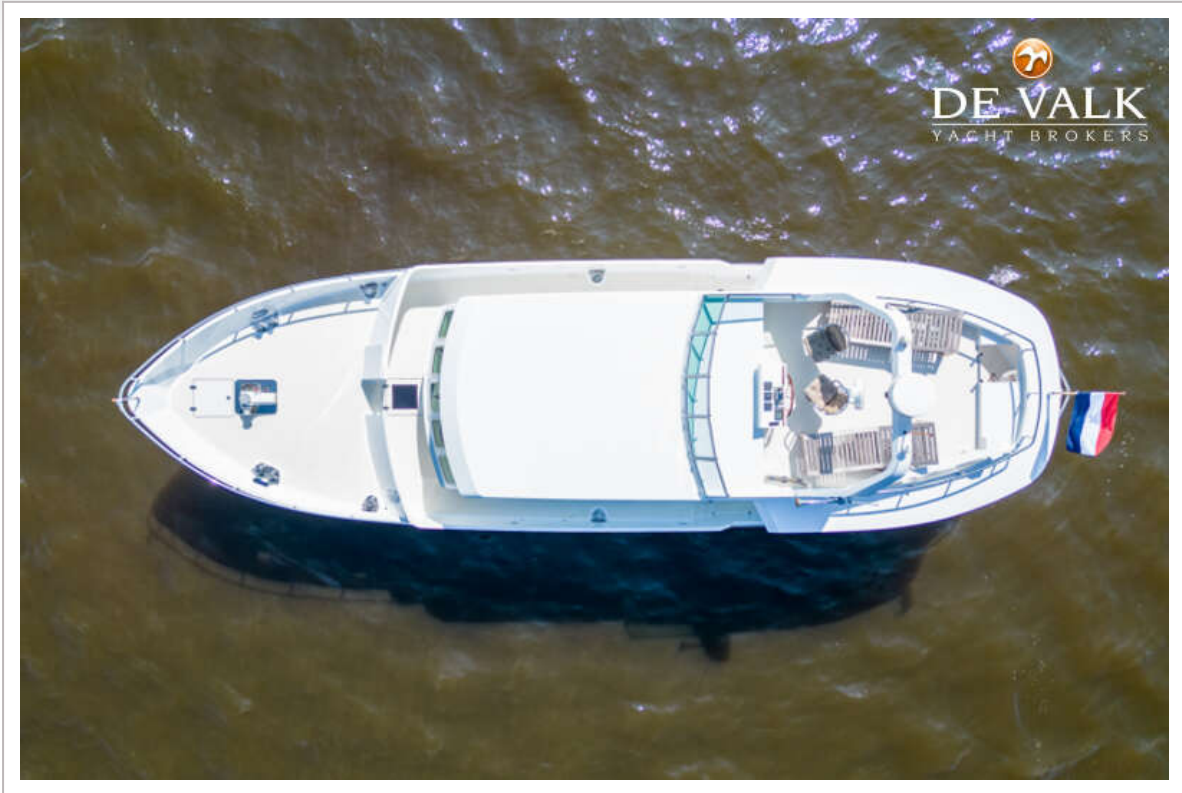
ja



ONE OFF LUXE KOMPIER SPITSGATKOTTER 1650



ONE OFF LUXE KOMPIER SPITSGATKOTTER 1650



ONE OFF LUXE KOMPIER SPITSGATKOTTER 1650



ONE OFF LUXE KOMPIER SPITSGATKOTTER 1650



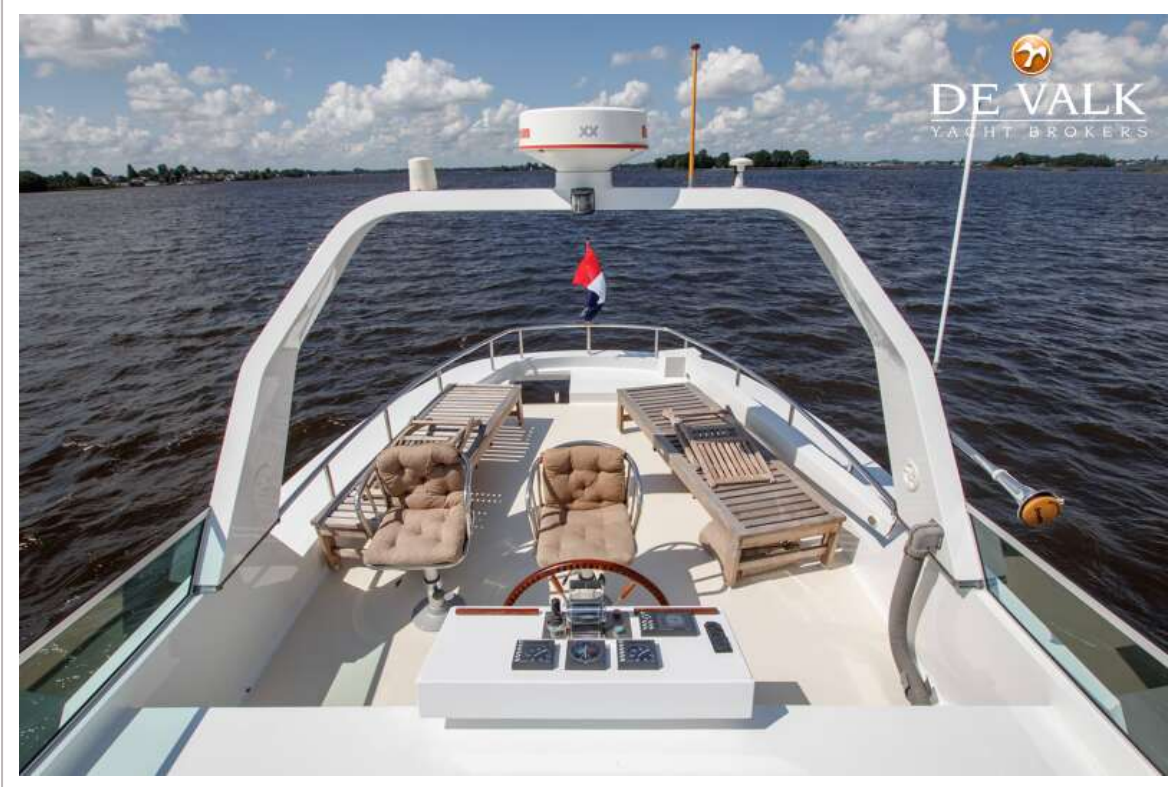
ONE OFF LUXE KOMPIER SPITSGATKOTTER 1650



ONE OFF LUXE KOMPIER SPITSGATKOTTER 1650



ONE OFF LUXE KOMPIER SPITSGATKOTTER 1650



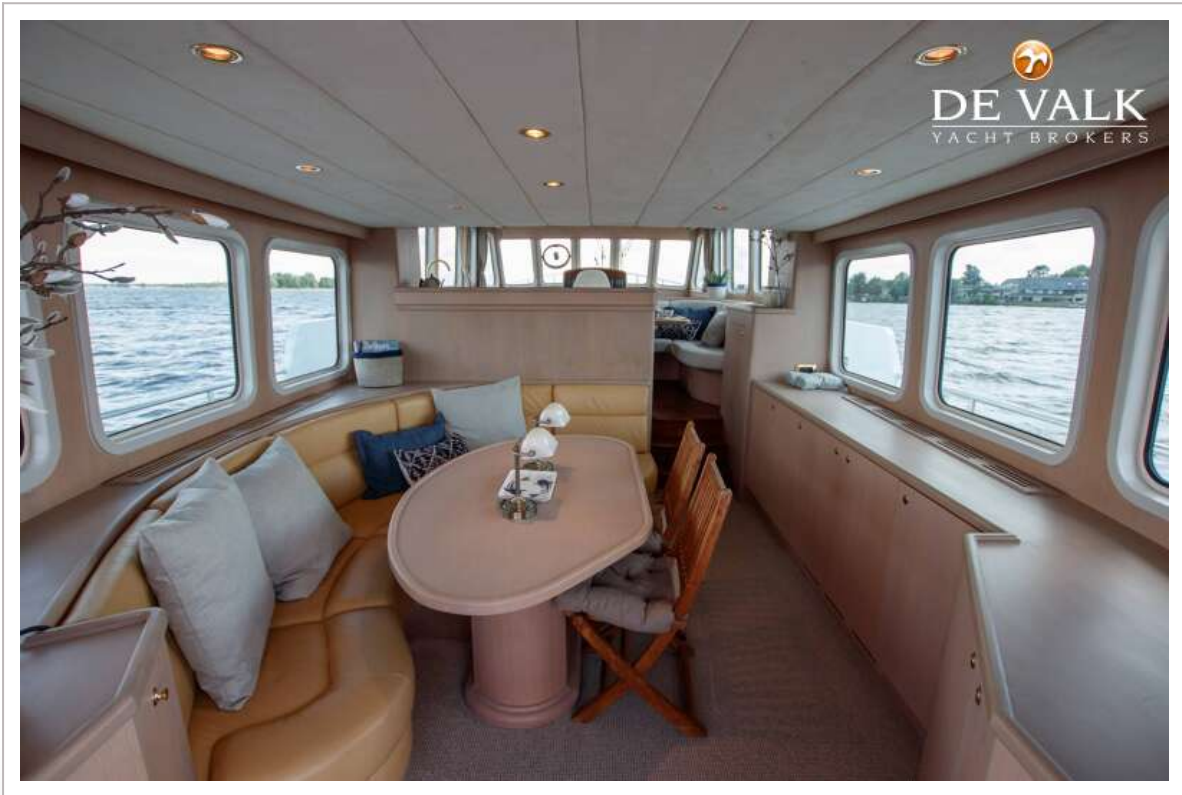
ONE OFF LUXE KOMPIER SPITSGATKOTTER 1650



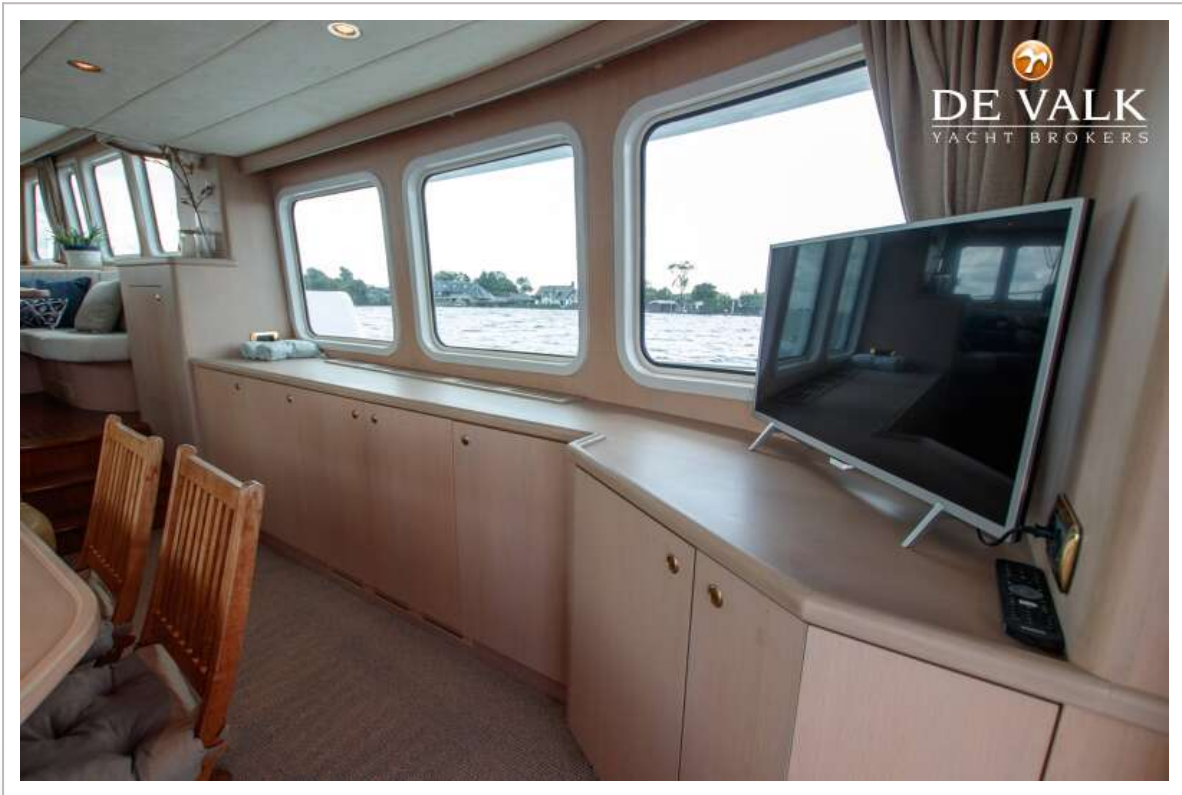
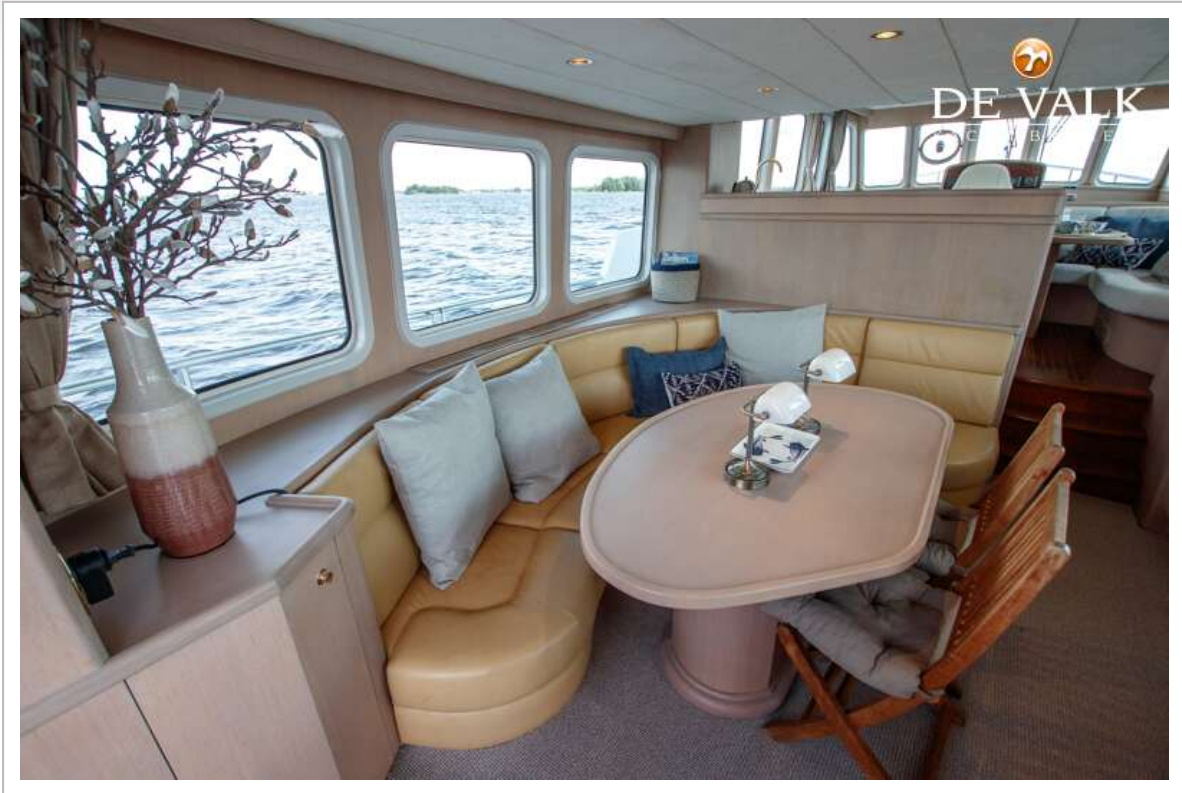
ONE OFF LUXE KOMPIER SPITSGATKOTTER 1650



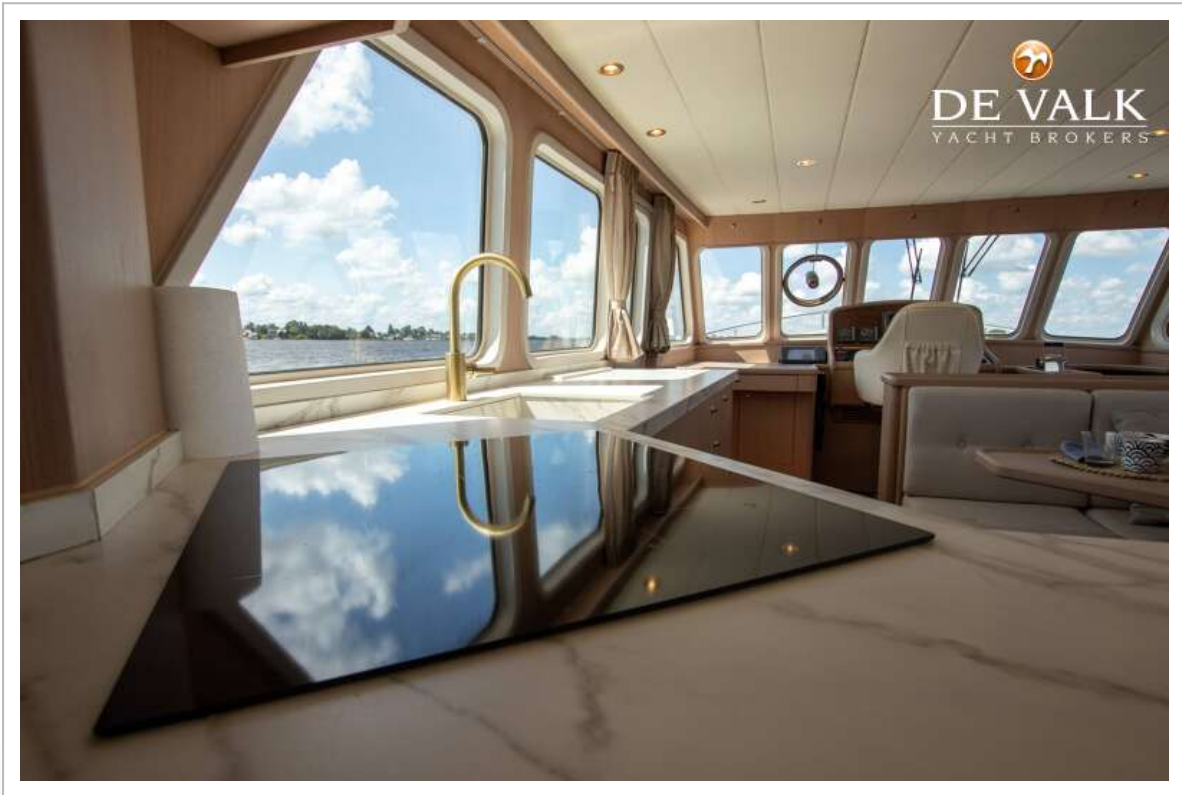
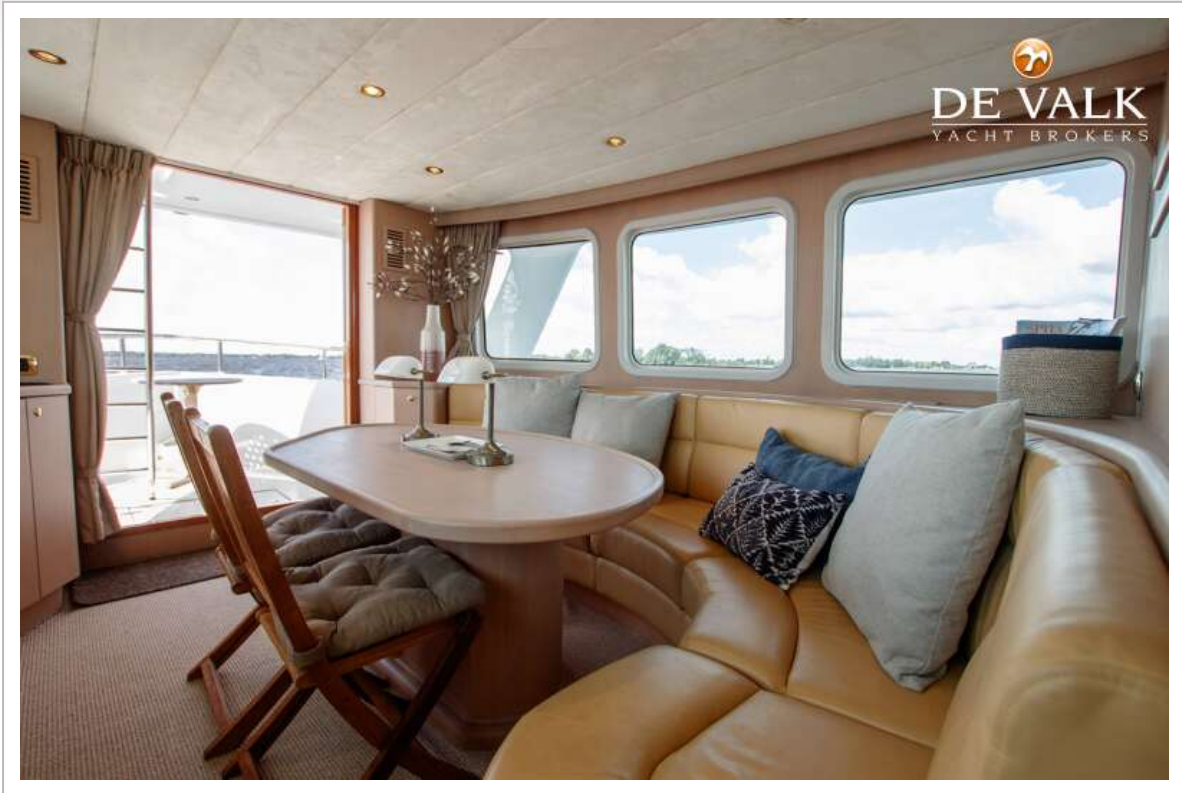
ONE OFF LUXE KOMPIER SPITSGATKOTTER 1650



ONE OFF LUXE KOMPIER SPITSGATKOTTER 1650



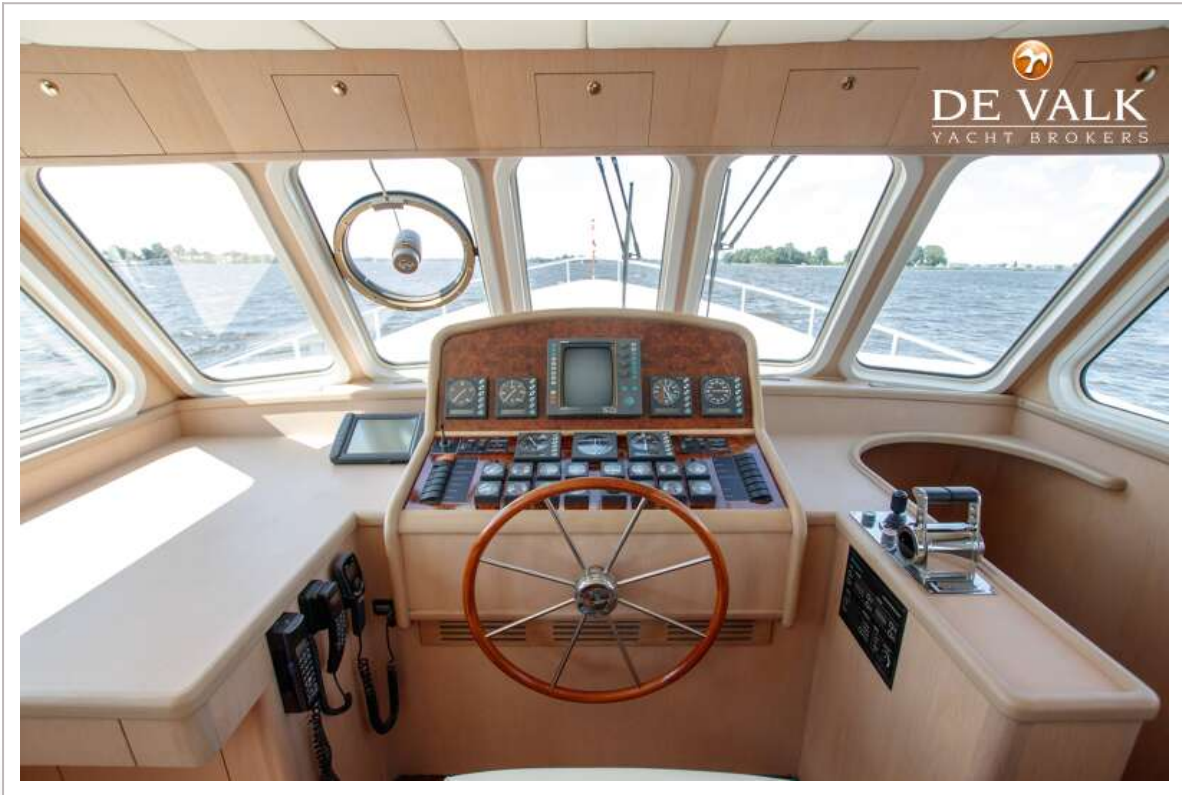
ONE OFF LUXE KOMPIER SPITSGATKOTTER 1650



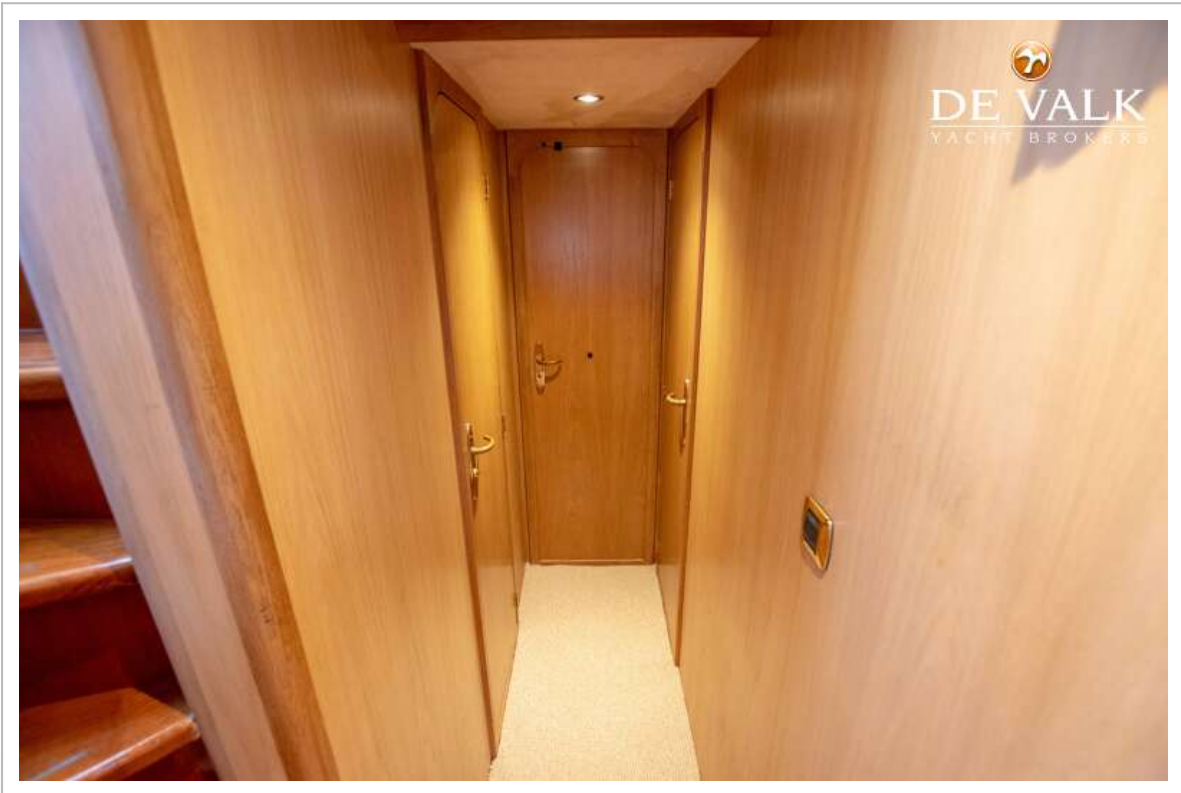
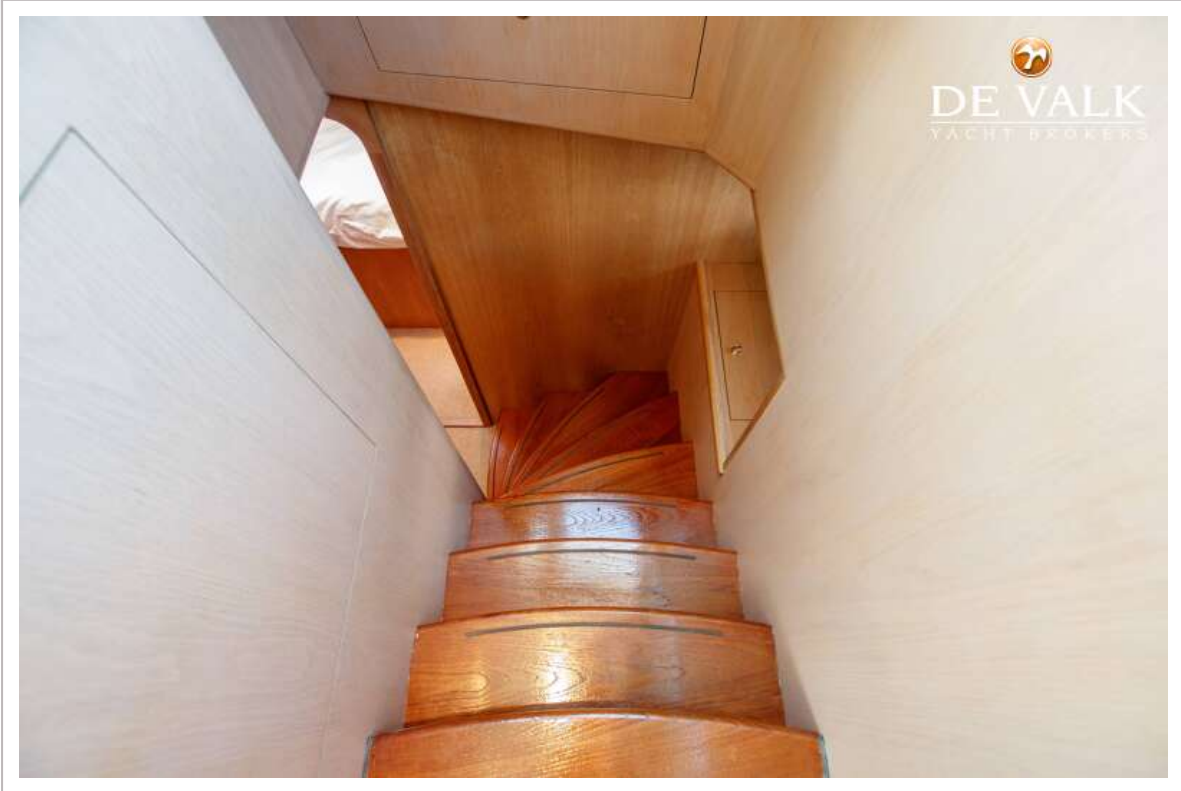
ONE OFF LUXE KOMPIER SPITSGATKOTTER 1650



ONE OFF LUXE KOMPIER SPITSGATKOTTER 1650



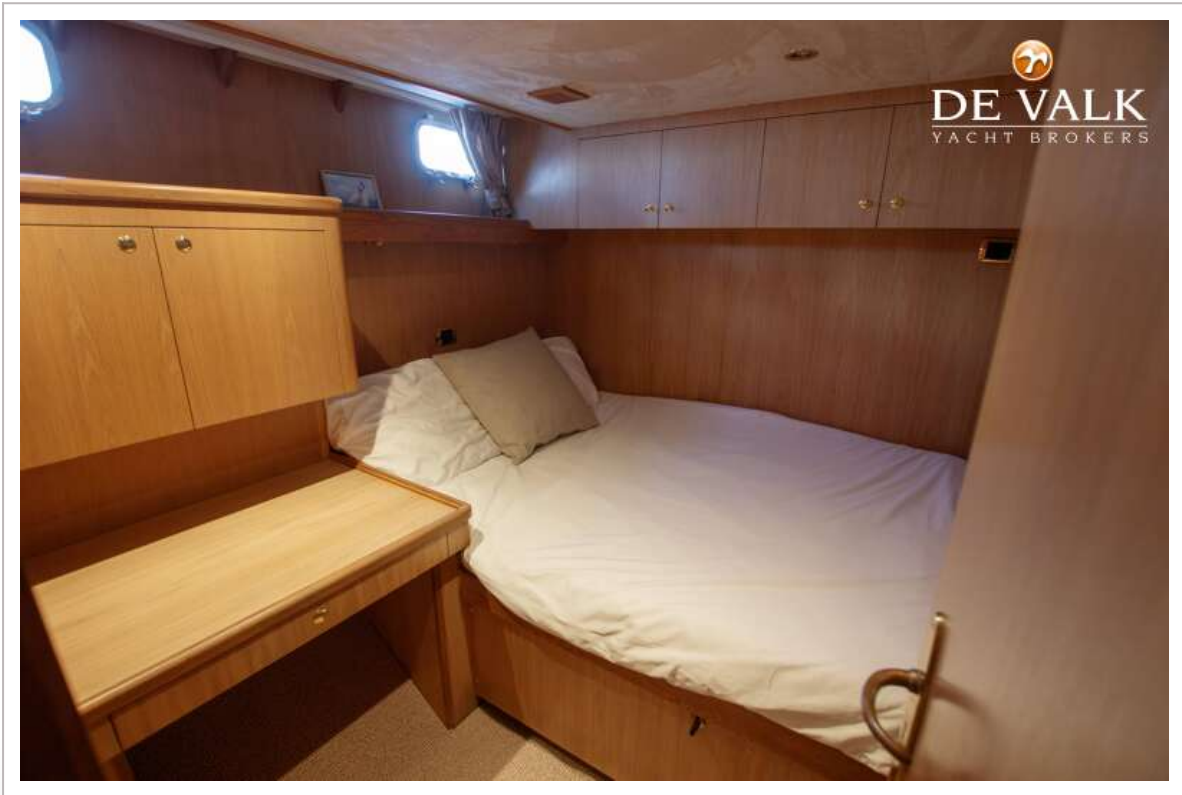
ONE OFF LUXE KOMPIER SPITSGATKOTTER 1650



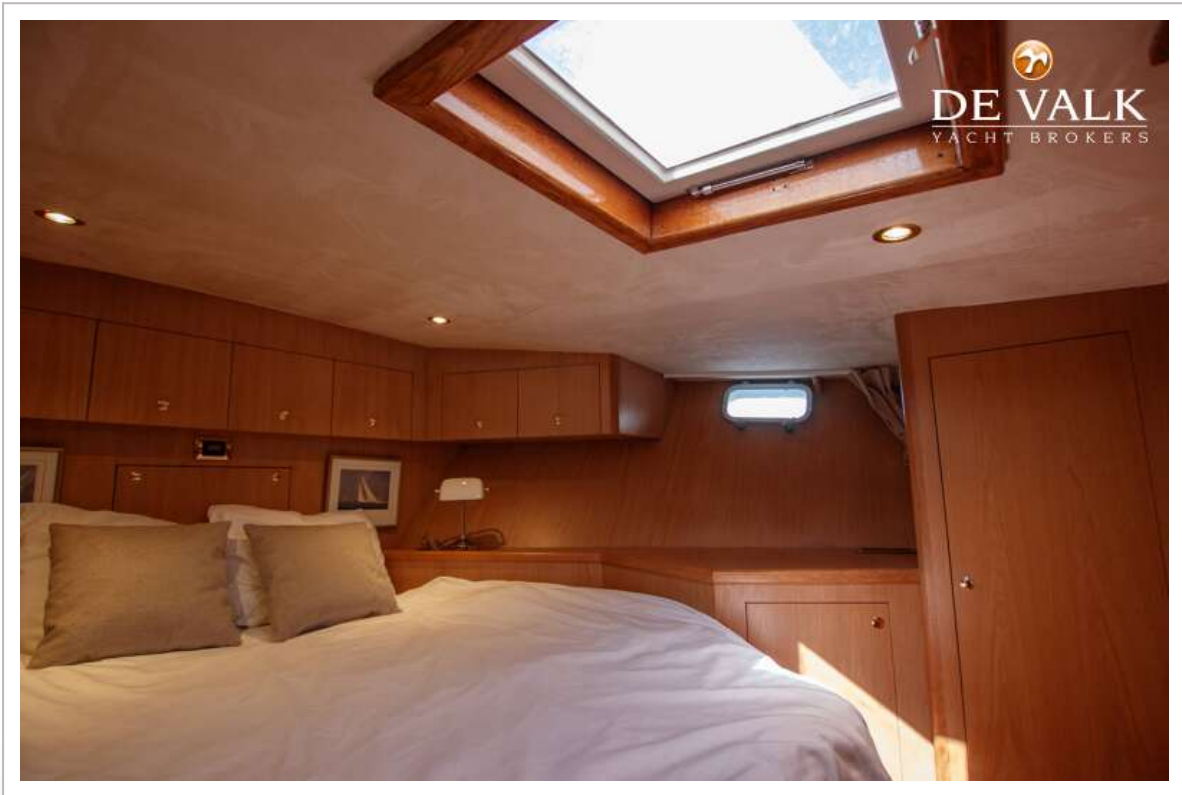
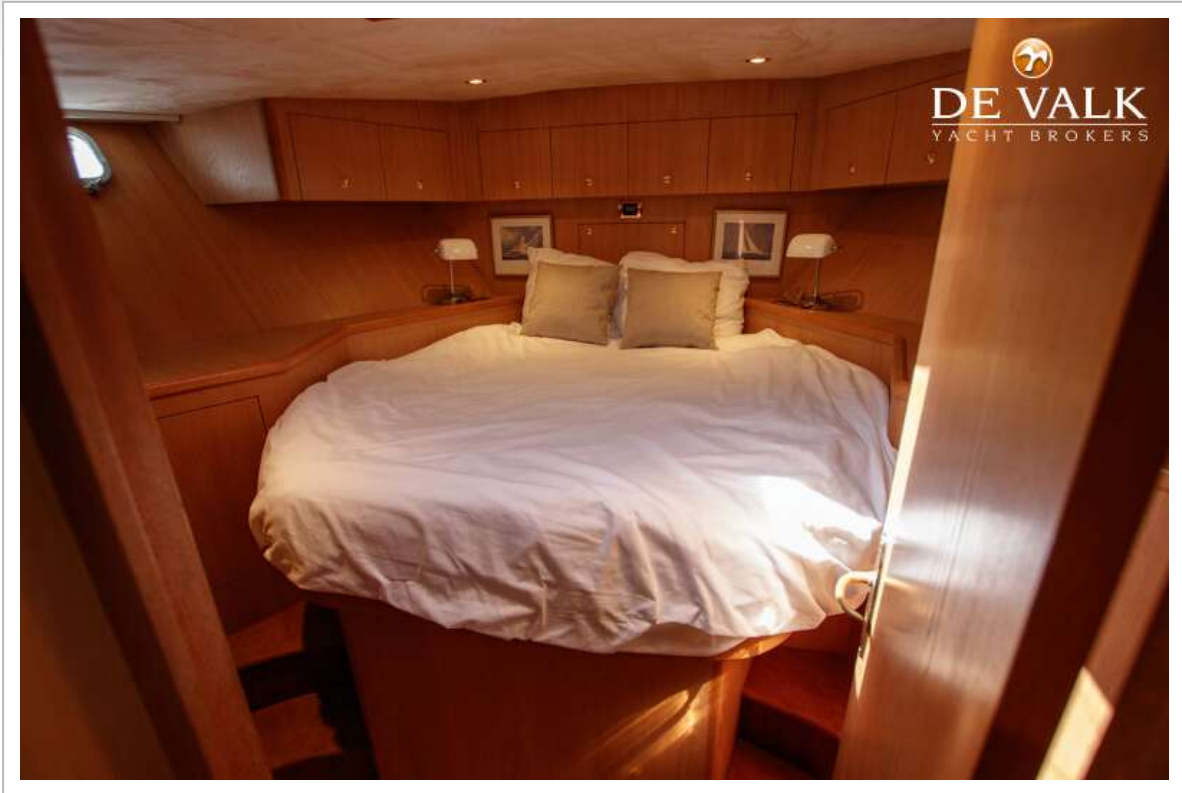
ONE OFF LUXE KOMPIER SPITSGATKOTTER 1650



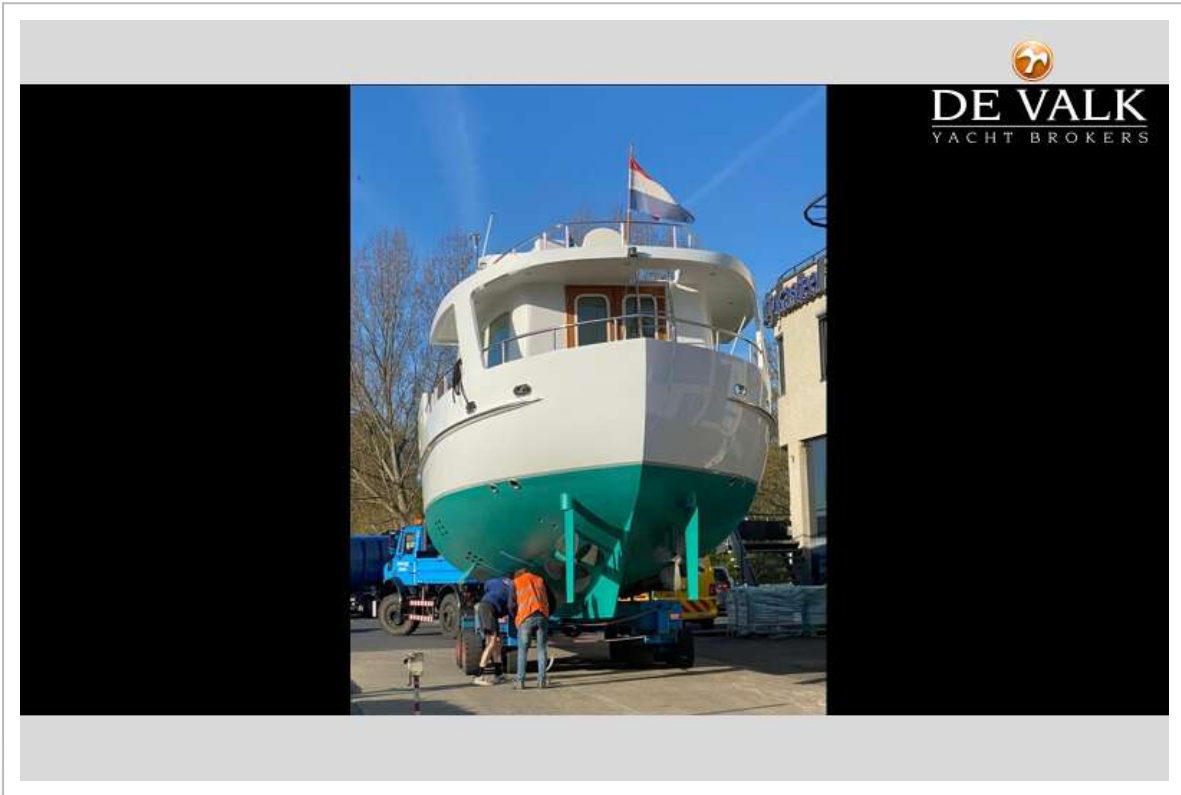
ONE OFF LUXE KOMPIER SPITSGATKOTTER 1650



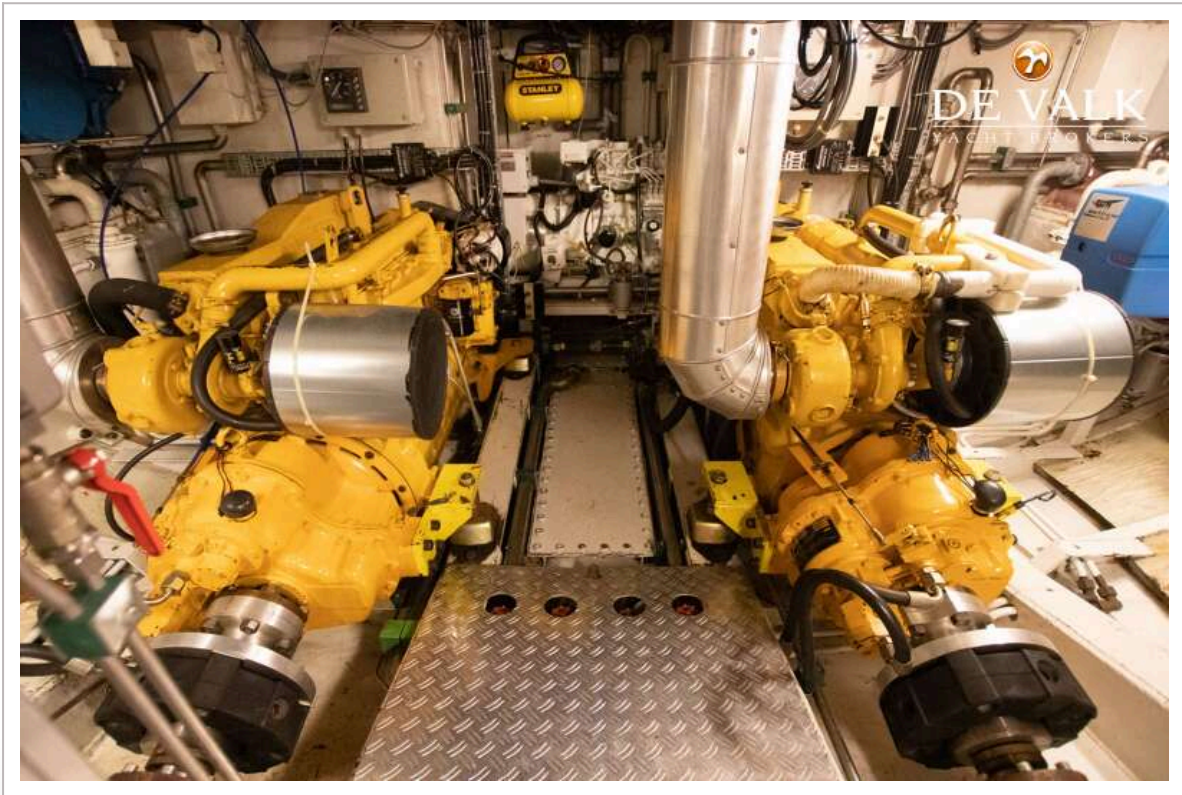
ONE OFF LUXE KOMPIER SPITSGATKOTTER 1650



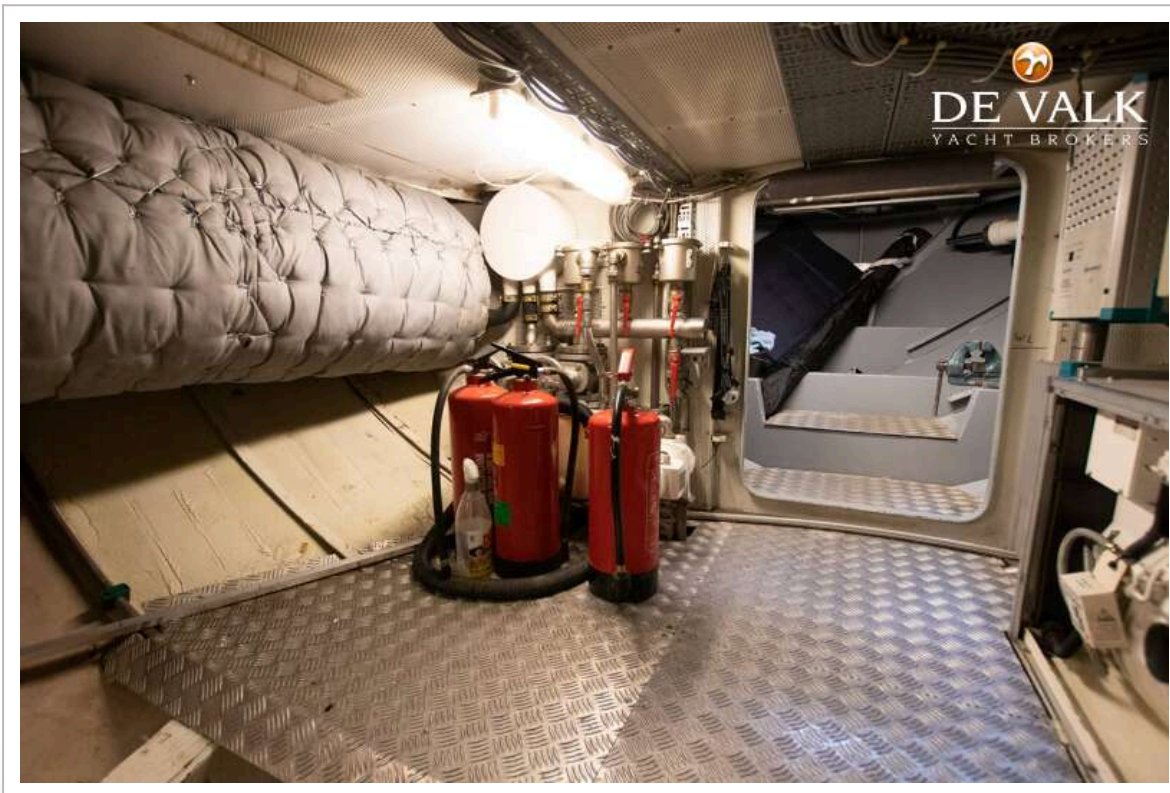
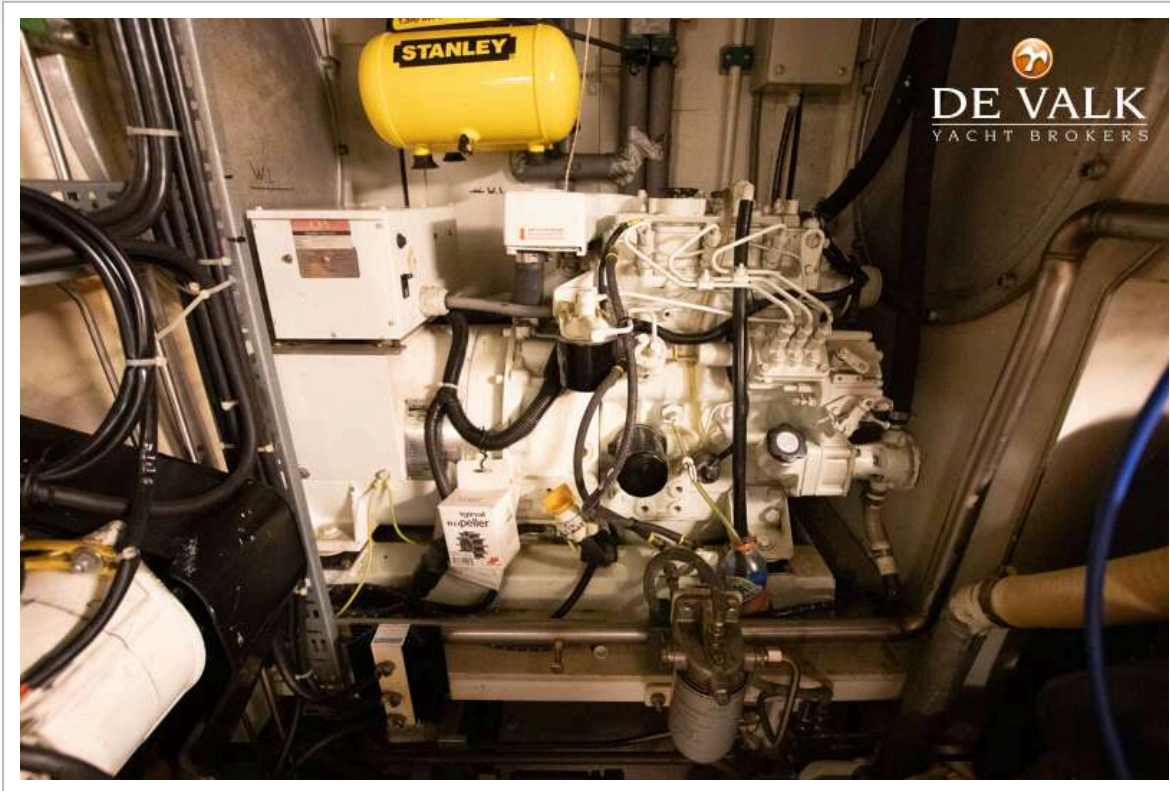
ONE OFF LUXE KOMPIER SPITSGATKOTTER 1650



ONE OFF LUXE KOMPIER SPITSGATKOTTER 1650



ONE OFF LUXE KOMPIER SPITSGATKOTTER 1650



ONE OFF LUXE KOMPIER SPITSGATKOTTER 1650

