



DE VALK  
YACHT BROKERS



## BOWMAN 49 KETCH



DE VALK  
YACHT BROKERS

# BOWMAN 49 KETCH

## KOMMENTARE DES MAKLERS

Famous Holman & Pye designed world cruiser. The Bowman 49 Ketch is built for long distance cruising with a comfortable stay on board. With her 2 cabin layout, each with its own bathroom she is ideal to cruise with family or friends. Equipped with a strong Nanni diesel engine which was installed in 2011, together with lots of other renewings she is now ready for a new adventure. The Bowman 49 Ketch can be visited at our sales office in Sint Annaland 7 days a week.

*Joris van de Rijt*

## TECHNISCHE DATEN

<b>Maße</b>	14.98 x 4.28 x 2.28 (m)	<b>Werft</b>	Southern Boatbuilding Company Limited
<b>Baujahr</b>	1980	<b>Kabinen</b>	2
<b>Material</b>	GFK	<b>Kojen</b>	7
<b>Motor(en)</b>	1 x Nanni N485 diesel	<b>PS/kW</b>	85.00 (PS), 62.56 (kW)
<b>Verkaufspreis</b>	€ 110.000 (MwSt. Mehrwertsteuerfrei)	<b>Liegeplatz</b>	beim Verkaufsbüro

## KONTAKT

<b>Verkaufsbüro</b>	De Valk Sint Annaland	<b>Telefon</b>	+31 166 601 000
<b>Adresse</b>	Koelhuisweg 4 4697 RM Sint Annaland The Netherlands	<b>E-Mail</b>	sintannaland@devalk.nl

## HAFTUNGSAUSSCHLUSS

Diese Angaben erfolgen nach bestem Wissen, können jedoch nicht garantiert werden.



# BOWMAN 49 KETCH

## ALLGEMEIN

<b>Modell</b>	BOWMAN 49 KETCH
<b>Typ</b>	Segelyacht
<b>Rumpflänge (m)</b>	14,98
<b>Wasserlinienlänge (m)</b>	11,90
<b>Breite (m)</b>	4,28
<b>Tiefgang (m)</b>	2,28
<b>Durchfahrtshöhe (m)</b>	19,80
<b>Stehhöhe (m)</b>	2,05
<b>Baujahr</b>	1980
<b>Werft</b>	Southern Boatbuilding Company Limited
<b>Land</b>	Vereinigtes Königreich
<b>Entwerfer</b>	Holman & Pye
<b>Gewicht (t)</b>	16,7
<b>Ballast (Ton)</b>	Blei 5,9
<b>Rumpfmateri al</b>	GFK
<b>Rumpffarbe</b>	Weiß
<b>Rumpfform</b>	Rundspant
<b>Art Kiel</b>	Flossen Kiel
<b>Material Aufbauten</b>	GFK
<b>Stossliste</b>	Holz With stainless steel (all new 2015)
<b>Deckmaterial</b>	GFK
<b>Deck Finish</b>	Teak New placed in 2004 and renovated in winter 2014/2015
<b>Deck Finish Aufbauten</b>	Teak New placed in 2004 and renovated in winter 2014/2015
<b>Pflicht Bedeckung</b>	Teak New placed in 2004 and renovated in winter 2014/2015
<b>Antifouling (Jahr)</b>	2023
<b>Fenster Einfassung</b>	Aluminium
<b>Fenster Material</b>	Perspex
<b>Decks Luke</b>	ja
<b>Treibstofftank (Liter)</b>	300
<b>Füllstandsanzeige (Treibstofftank)</b>	(new 2017)



# BOWMAN 49 KETCH

Trinkwassertank (Liter)	2x 300
Fäkaelien Tank (Liter)	Kunststoff 47 (new 2009)
Fäkaelien Tankablauf	Deck Verbindung + Pumpe (new pump 2017)
Radsteuerung	mechanisch (steering system renovated in winter 2014/2015)
Not-Pinne	ja
Weitere Info	Hull + superstructure polished in 06-2024

## UNTERKUNFT

Kabinen	2
Koijen	7
Innen	Teak
Fussboden	Teak und Holly
Achterdeck	ja
Salon	ja
Standhöhe Salon (m)	2,05
Heizung	Diesel Heißluft Webasto airtop 5000 (checked in 2016)
Kartentisch	ja
Achterkabine	ja
Dinette	ja
Kombüse	ja
Arbeitsfläche	Kunststoff
Spülbecken	Edelstahl
Herd	Gas 4 burner
Ofen	ja
Kuhlschrank	Waeco (new thermostat and evaporator 2016)
Warmwasser System	220V + Motor Johnson 45L (new 2017)
Wasserdruck System	elektrisch Parmax 4 (new 2017)
Hand und/oder Fusspumpe	ja
Eignerkabine	Doppelbett + Einzelbett Aft
Länge Bett (m)	1,98 x 1,50 + 2,00 x 0,55
Kleiderschrank	Regale und hängend



# BOWMAN 49 KETCH

<b>Badezimmer</b>	en suite I
<b>Toilet</b>	en suite
<b>Toilette System</b>	handbetrieb Jabsco (new pump 2016)
<b>Handwaschbecken</b>	im Badezimmer
<b>Dusche</b>	en suite
<b>Gästekabine 1</b>	V-Bett
<b>Länge Bett (m)</b>	1,80
<b>Kleiderschrank</b>	Regale und hängend
<b>Badezimmer</b>	en suite II
<b>Toilette</b>	en suite
<b>Toilette System</b>	handbetrieb Jabsco (new pump 2022)
<b>Handwaschbecken</b>	im Badezimmer
<b>Dusche</b>	en suite

## MASCHINEN

<b>Motoranzahl</b>	1
<b>Marke</b>	Nanni
<b>Typ</b>	N485
<b>PS</b>	85
<b>kW</b>	62.56
<b>Kraftstoffart</b>	Diesel
<b>Installiert im Jahr</b>	2011
<b>Höchstgeschwindigkeit (Kn)</b>	8
<b>Marschgeschwindigkeit (Kn)</b>	7
<b>Motorstunden</b>	1088
<b>Kühlungssystem Motor</b>	indirekte Wärmetauscher
<b>Antrieb</b>	Schraubenwelle
<b>Motor bedienung</b>	Seilzug Kabel
<b>Gewende getriebe</b>	mechanisch (new installed together with the engine in 2011)
<b>Bugschraube</b>	elektrisch Vetus 95 kgf with tunnel completely new built in 2011
<b>Propeller Typ</b>	falt Flex-O-Fold (new 2011)



# BOWMAN 49 KETCH

<b>Propellerblätter</b>	3
<b>Material Propellerwelle</b>	Edelstahl + bearings all new 2011
<b>Propellerwelle schmierung</b>	Wasser Volvo seal (new 2011)
<b>Hand Bilgenpumpe</b>	ja
<b>Elektrische Bilgenpumpe</b>	ja
<b>Elektrische Anlage</b>	12V/220V
<b>Starterbatterie</b>	1x VMF 105Ah (new 2022)
<b>Versorgungsbatterie</b>	3x Mastervolt SlimLine AGM 150Ah (new 2022)
<b>Batterie Monitor</b>	Mastervolt
<b>Batterie Ladegerät</b>	Mastervolt Chargemaster 12/50 (new 2011)
<b>Umwandler</b>	For charging handheld VHF
<b>Wind generator</b>	Duo gen water/wind generator (new 2015)
<b>Solar panele</b>	Victron
<b>Dioden-Batterie-Koppler</b>	ja
<b>Landstrom</b>	mit Kabel
<b>Weitere Info</b>	Dubble fuel waterfilter for engine
<b>Weitere Info</b>	Engine service 01-2023

## NAVIGATION

<b>Kompass</b>	Plastimo (new 2017)
<b>3d echoloth</b>	Raymarine ST60 and Interphasen twinscope (new 2009)
<b>Logge</b>	Raymarine ST60
<b>Windlupe anzeige</b>	Raymarine ST60 (new 2013)
<b>Tochter anzeige</b>	Raymarine ST60 multi (charttable)
<b>UKW</b>	Navman 7110
<b>Portabel UKW</b>	Icom M91 (new 2013)
<b>Autopilot</b>	Raymarine ST7000+
<b>Ruderwinkel Anzeige</b>	On autopilot
<b>Radar</b>	Raymarine (new 2008)
<b>GPS</b>	Garmin 152H (new 2011)
<b>Radar/GPS/Plotter</b>	Raymarine C80 (new 2008)



Elektronische Kart(en)	ja
AIS Transponder	Raymarine AIS 650 - class B (new 2016)
Epirb	Rescue Me (new 2017)
Navigation Beleuchtung	ja

## AUSRÜSTUNG

Spritzverdek	(new 2019)
Kuchenbude	For enterance only (new 2019)
Cockpit Polster	Loose cushions
Cockpit Tisch	Loose table
Badeleiter	Edelstahl Detachable in aft. deck locker
Anker	CQR Pflugschar
Ankerkette	ja
Ankerwinde	elektrisch Lofrans Tigres (new 08-2023)
Gangspill	On windlass
Beiboot	fest Rumpf Custom made wood
Ausserborder Halterung	ja
See Reling	Draht/Seil
Seiten-Einstieg Seereling	2x
Heckkorb	ja
Bugkorb	ja
Rettungsinsel	Container Safeguard
Rettungsinsel (Pers)	6 (survey until 03/2024)
Rettungsboje	ja
Markierboje	ja
Radar Reflektor	ja
Fenderkissen	ja
Festmacher	ja
Radio-CD Spieler	Sony
Lautsprecher im Salon	Pioneer
Uhr - Barometer	ja



Feuerlöscher	ja
Weitere Info	Cover for helmposition (new 2019)

## RIGG

Rig	Ketsch-Kutter
Stehendes Gut	Drahtseil (new front stay in combination with new genua furler in 2021)
Material Mast	Aluminium
Durchgehende Mast	ja
Großsegel	Lion Sails 39,5 m2 (new 2012)
Großsegel-Persenning	Lion Sails (new 2013)
Kutter Stag	With Jib
Besan	Lion Sails 18,5 m2 (new 2012)
Besansegel-Persenning	Lion Sails (new 2013)
Genua	Lion Sails 64,8 m2 (new 2012)
Rollreffanlage	Harken MKIV unit 3 (new 2021)
Kutter Rollreffanlage	ja
Spi	With squeezer
Reff Vorrichtung	Reffleinen
Baumniederhohler	mechanisch
Primare Schot Winschen	2x Lewmar 55 st
Sekundaire Schot Winschen	1x Lewmar 46 st
Genua Schotwischen	2x Lewmar 66 st
Fall Winschen	2x lewmar 48 st
Reff Wunsch	2x lewmar 44
Multifunktional Winschen	7x
Spi-Baum	Kohlenstoff
Weitere Info	Walder boom brake (new 2020)
Weitere Info	Inner forestay and runners





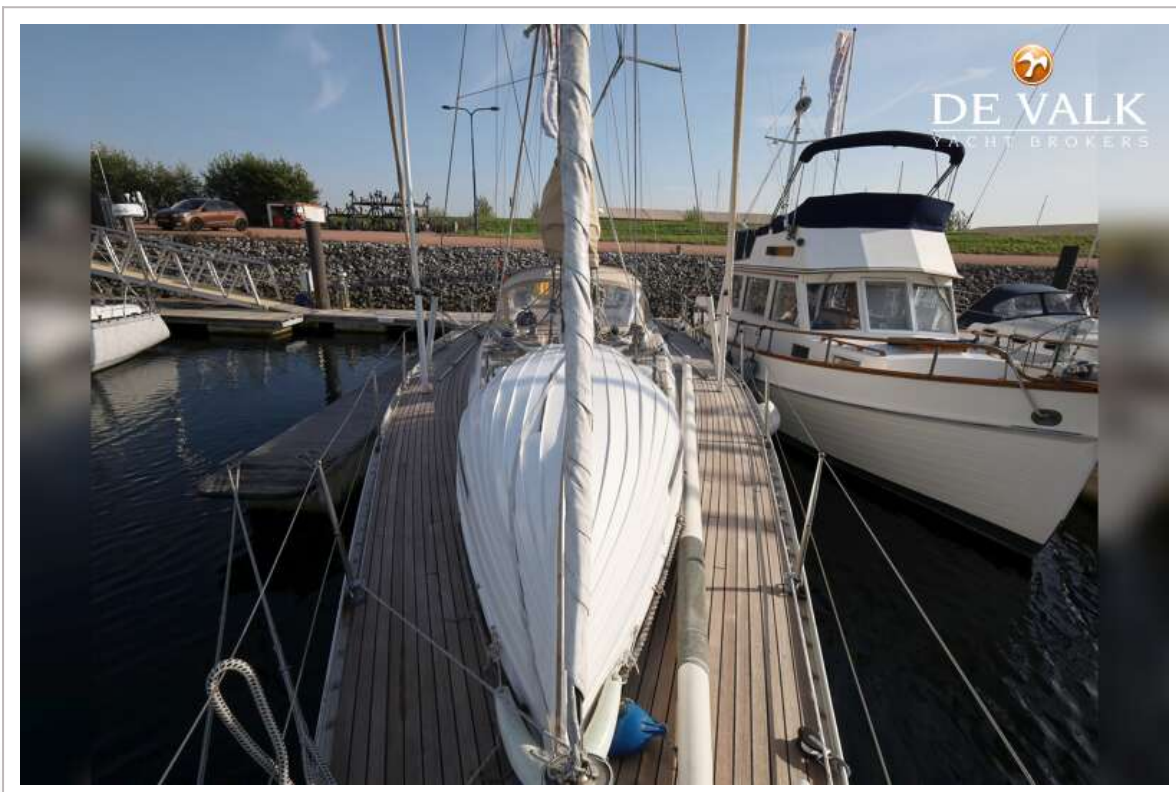
# BOWMAN 49 KETCH



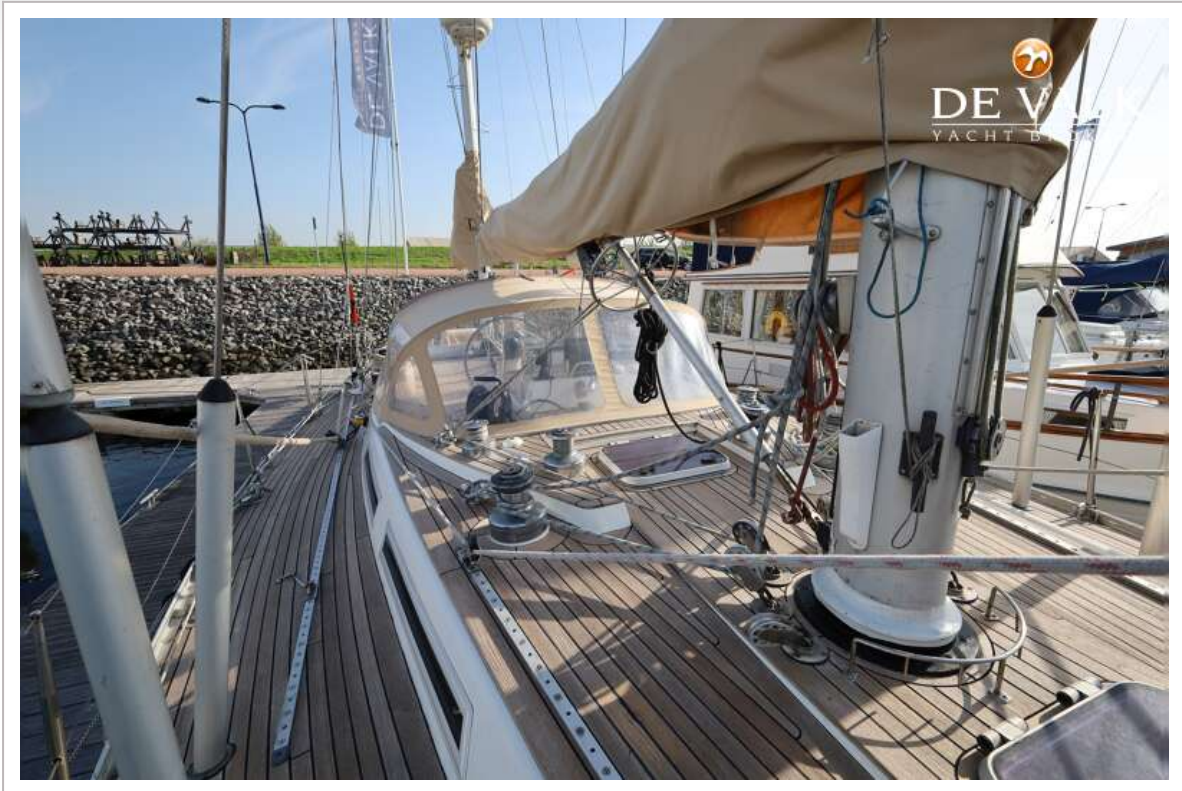
# BOWMAN 49 KETCH



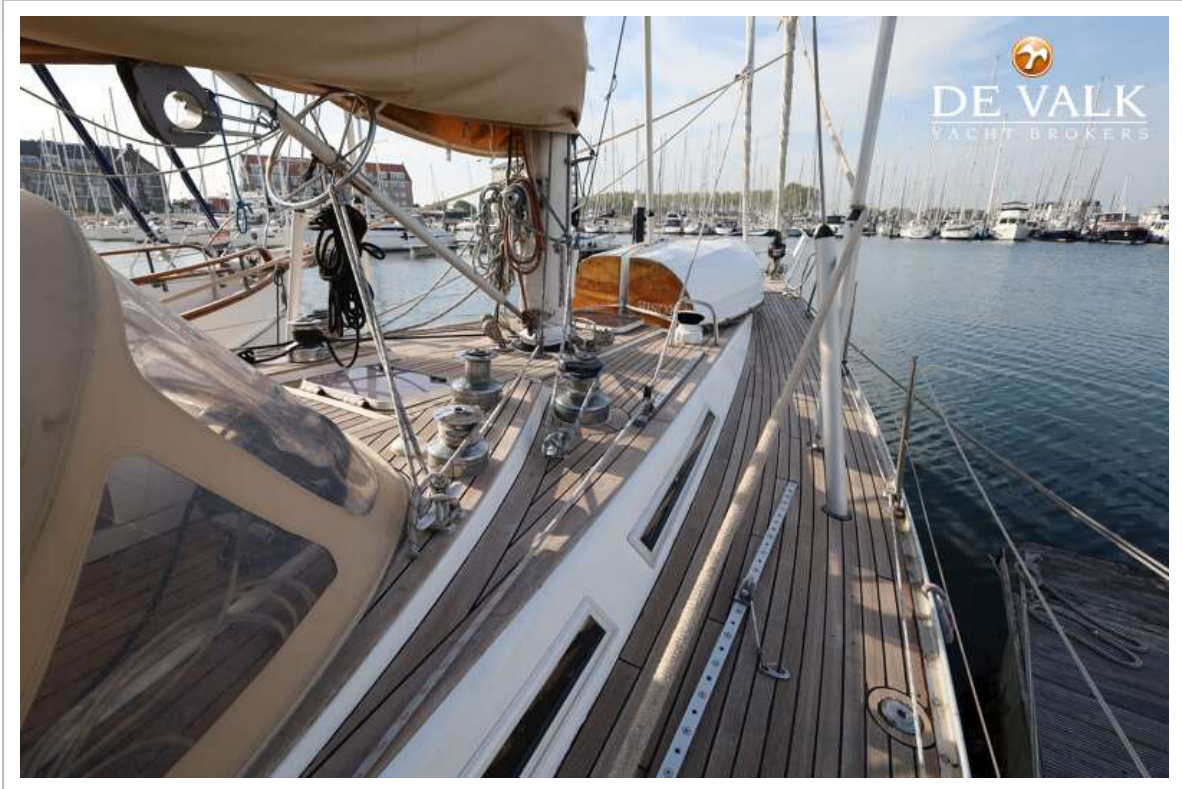
# BOWMAN 49 KETCH



# BOWMAN 49 KETCH



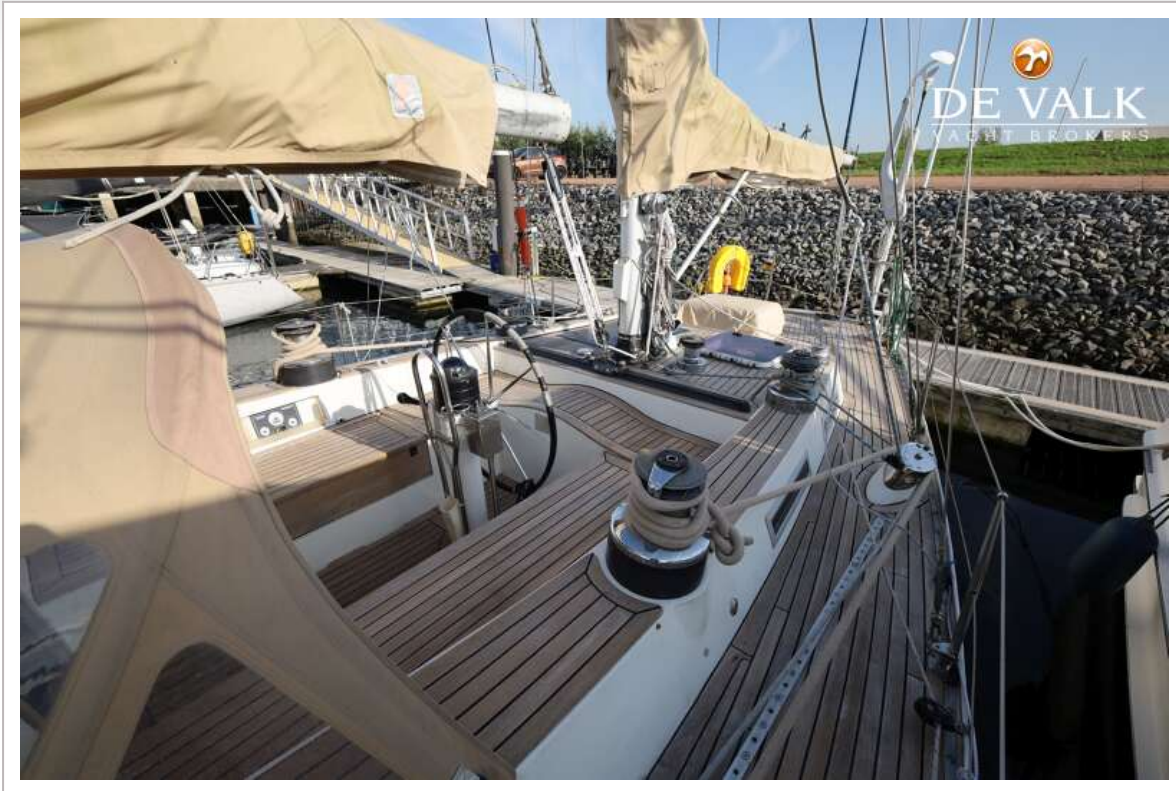
# BOWMAN 49 KETCH



# BOWMAN 49 KETCH



# BOWMAN 49 KETCH

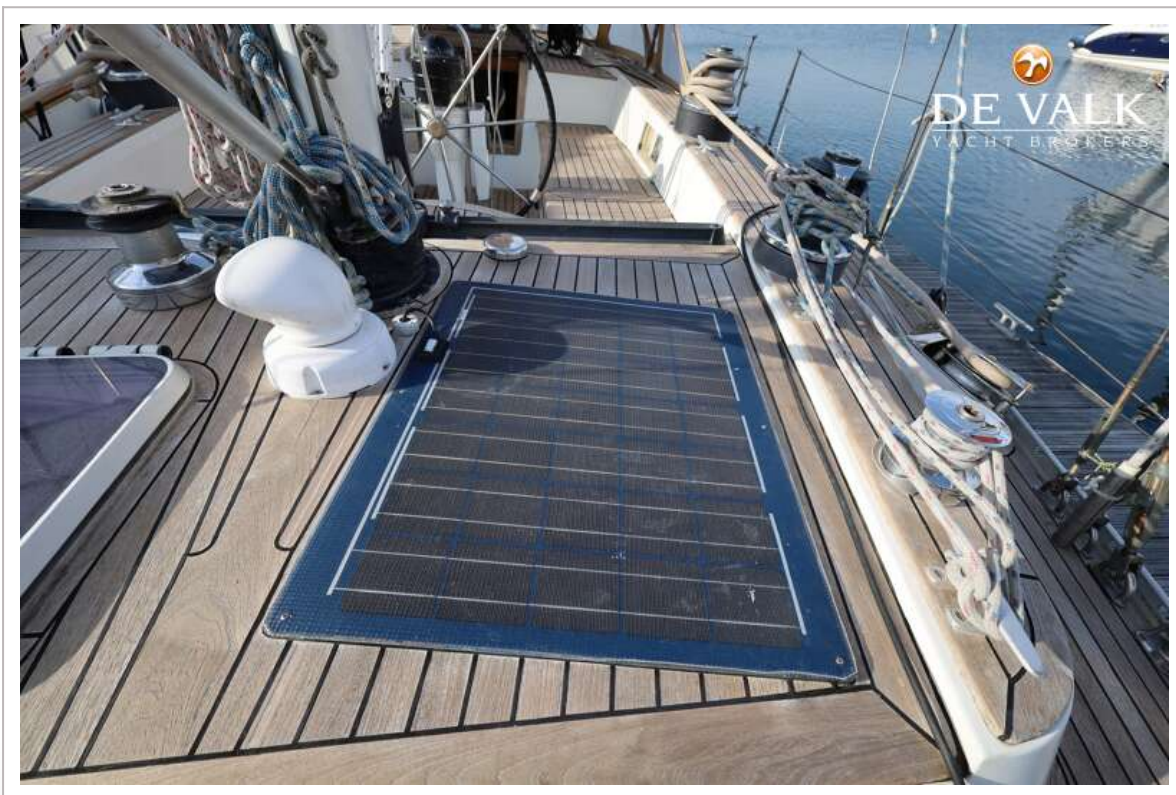
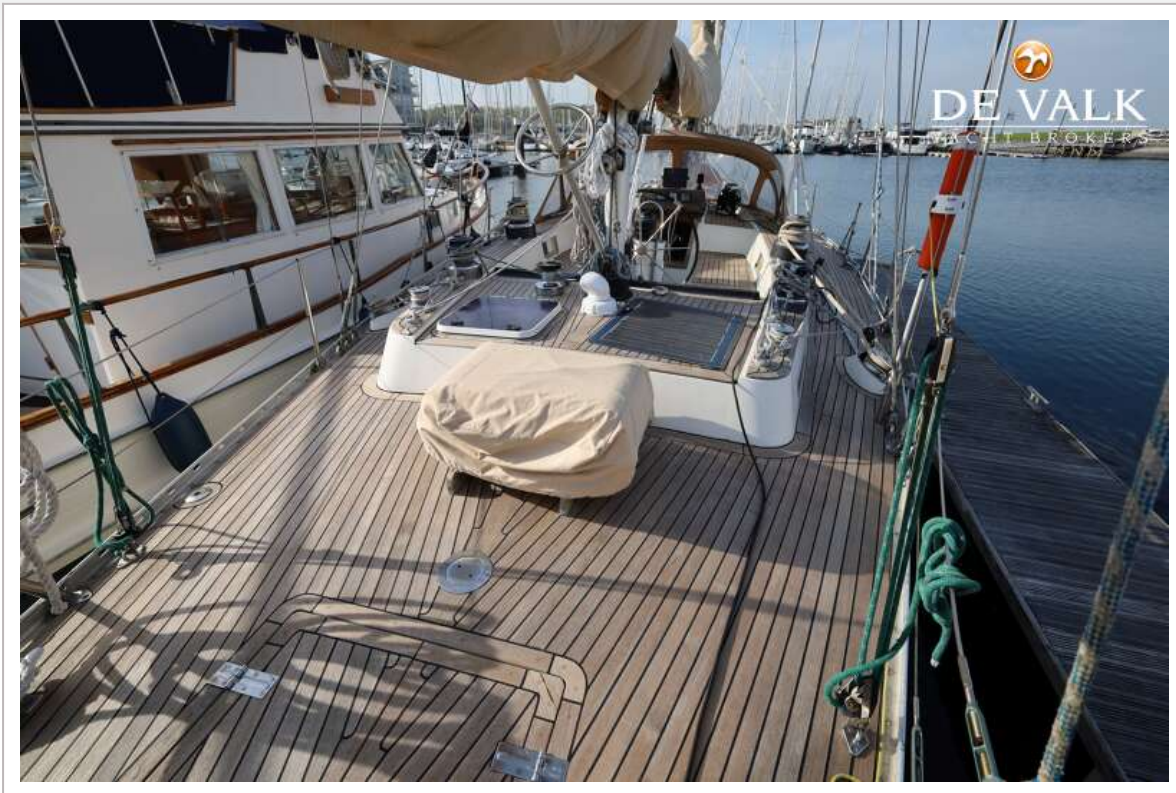


# BOWMAN 49 KETCH

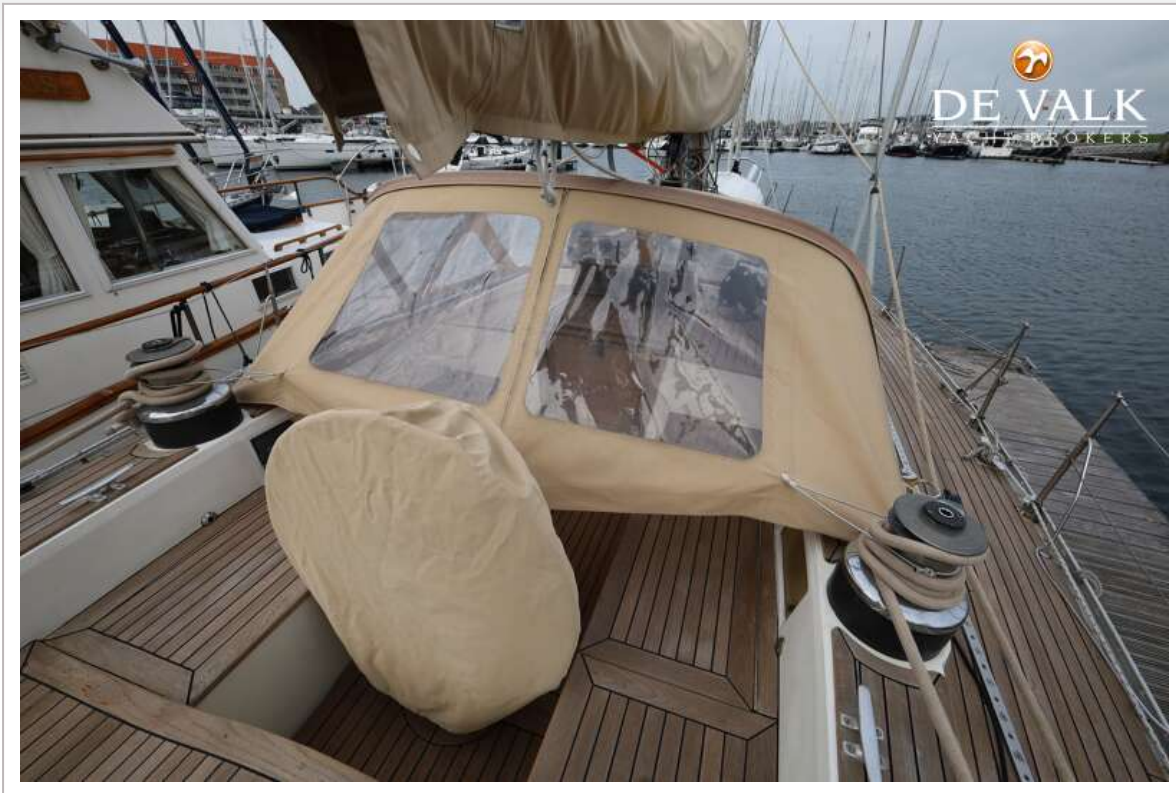




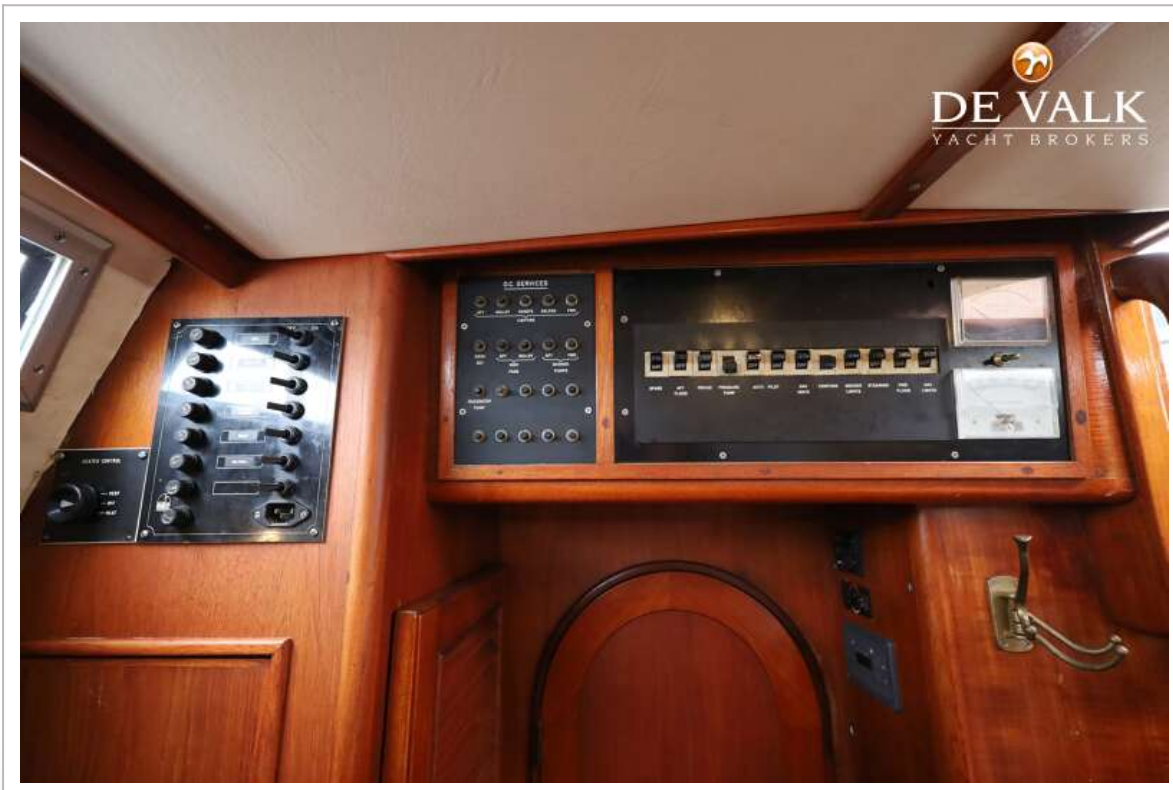
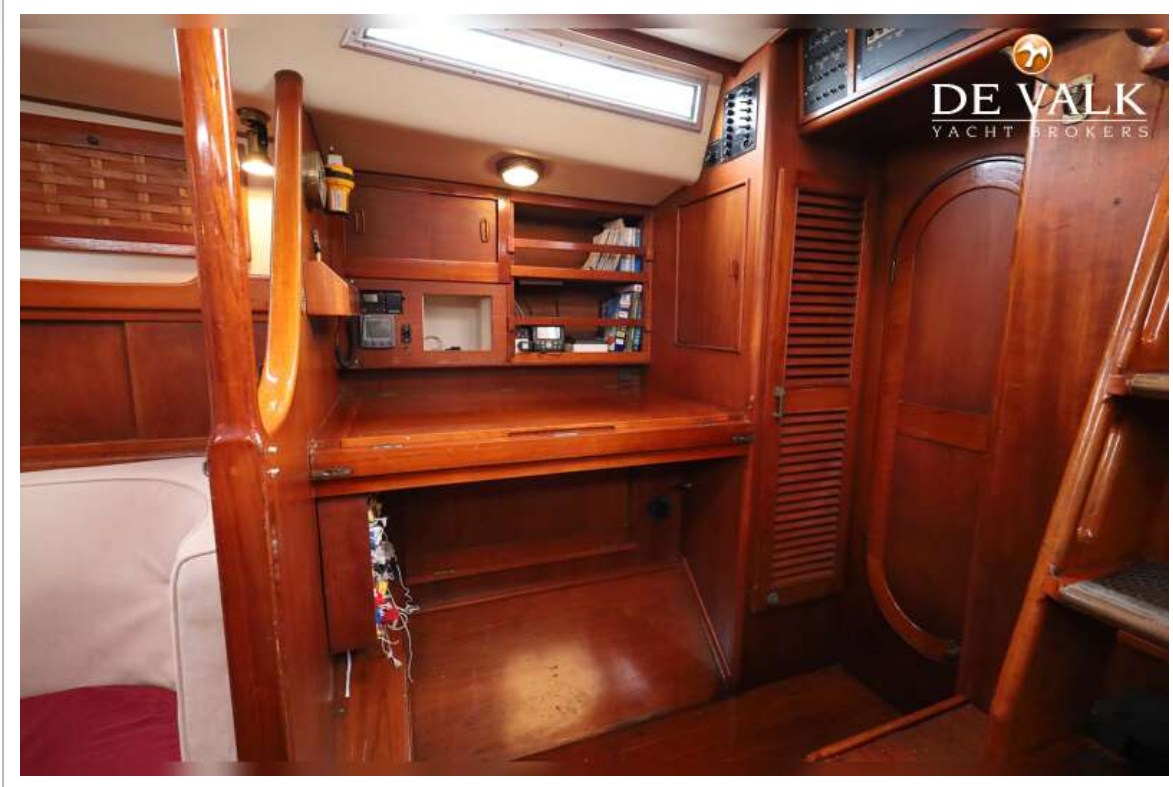
# BOWMAN 49 KETCH



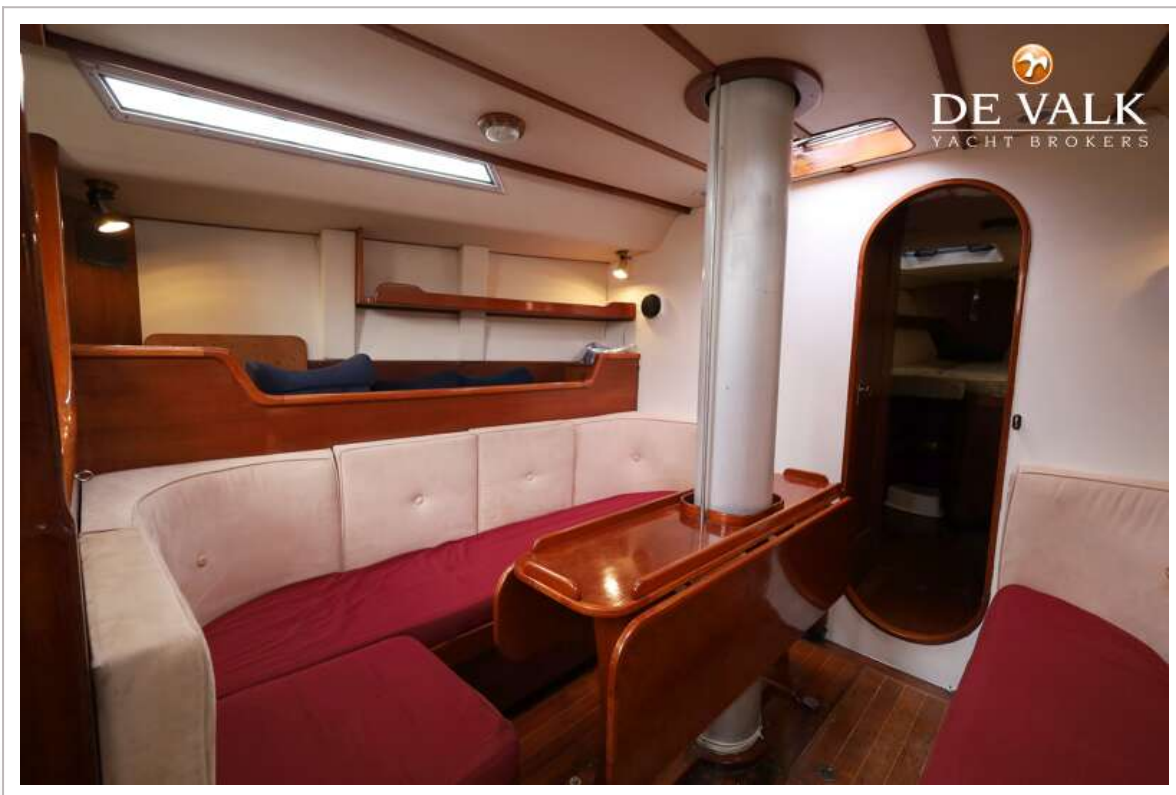
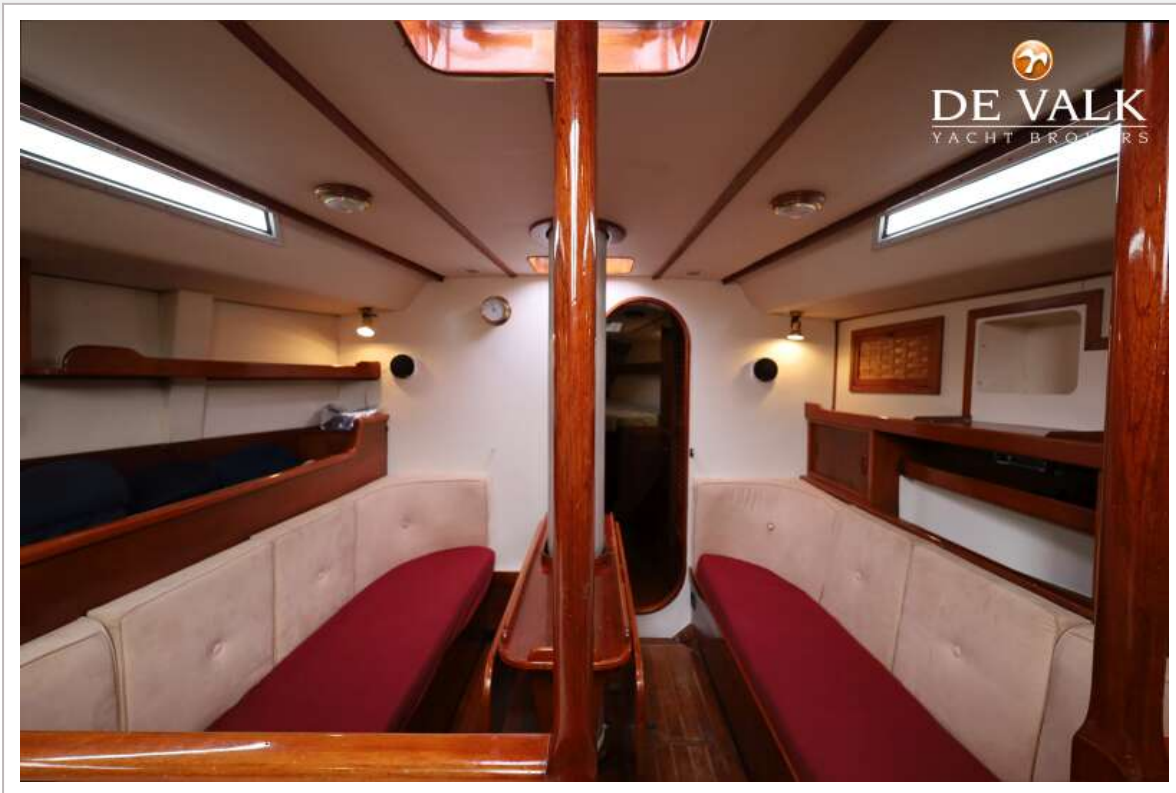
# BOWMAN 49 KETCH



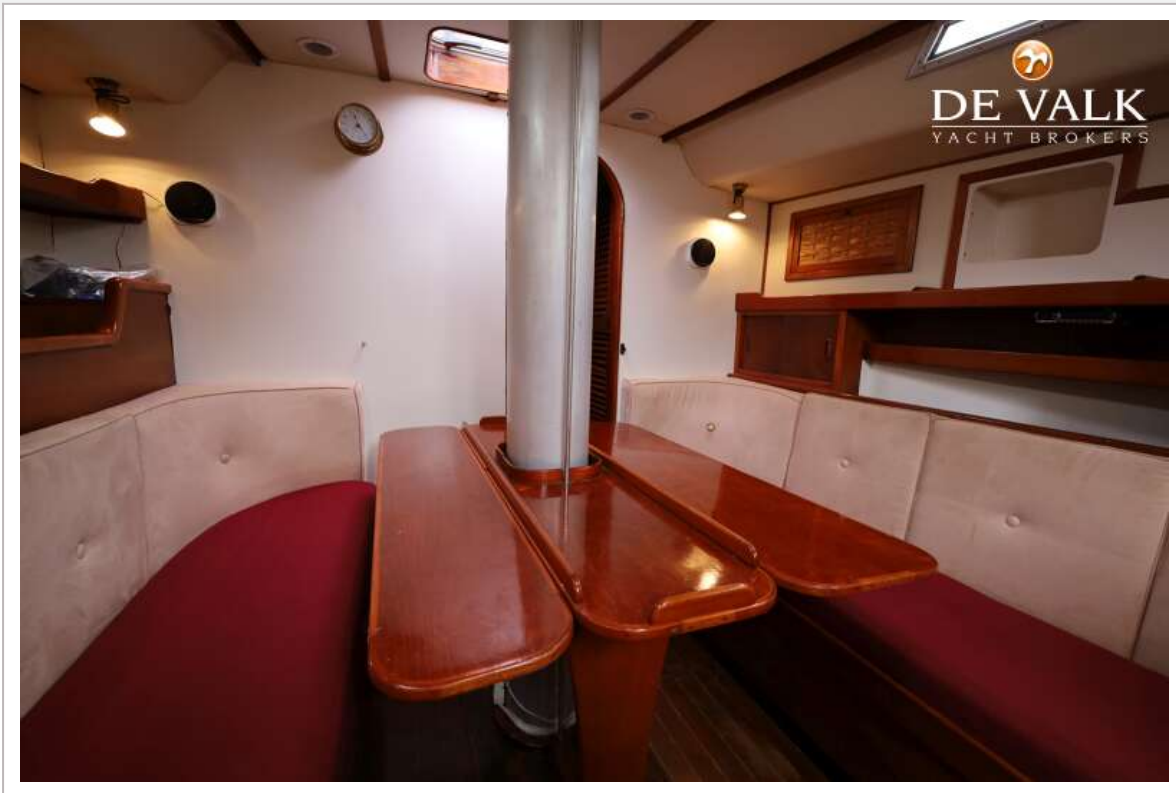
# BOWMAN 49 KETCH



# BOWMAN 49 KETCH



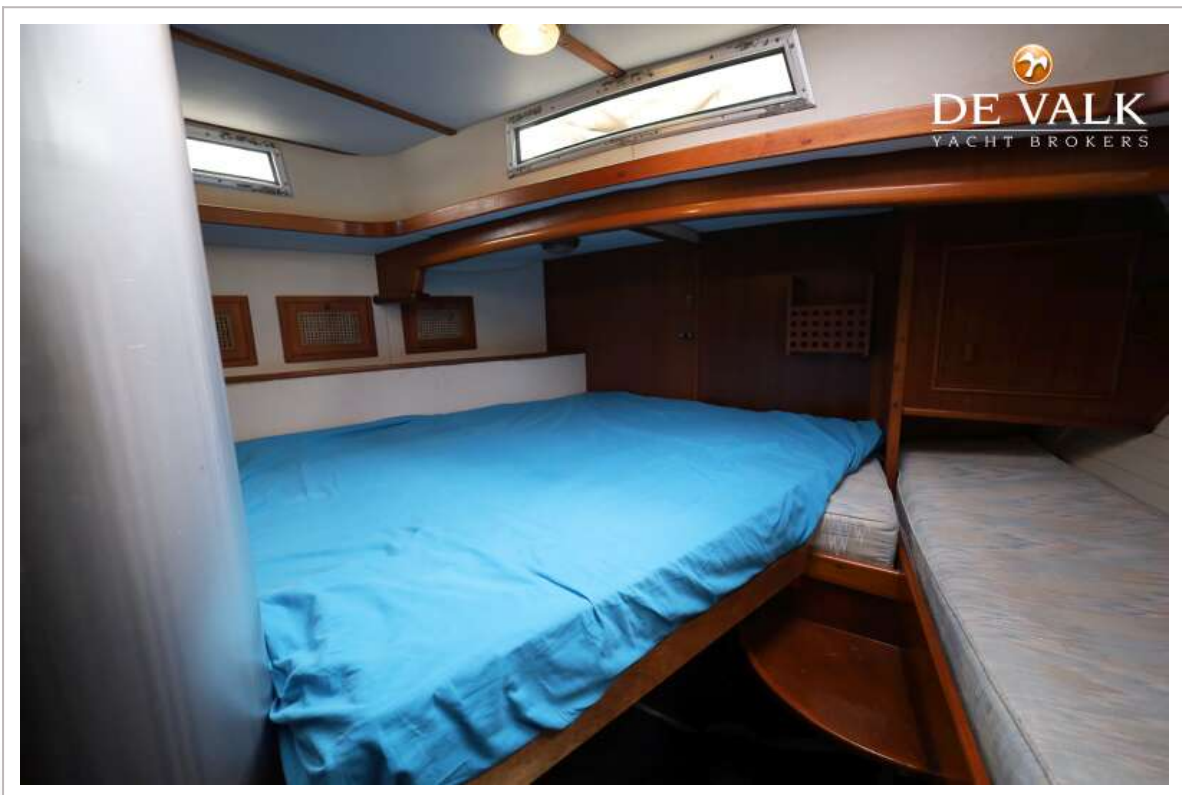
# BOWMAN 49 KETCH



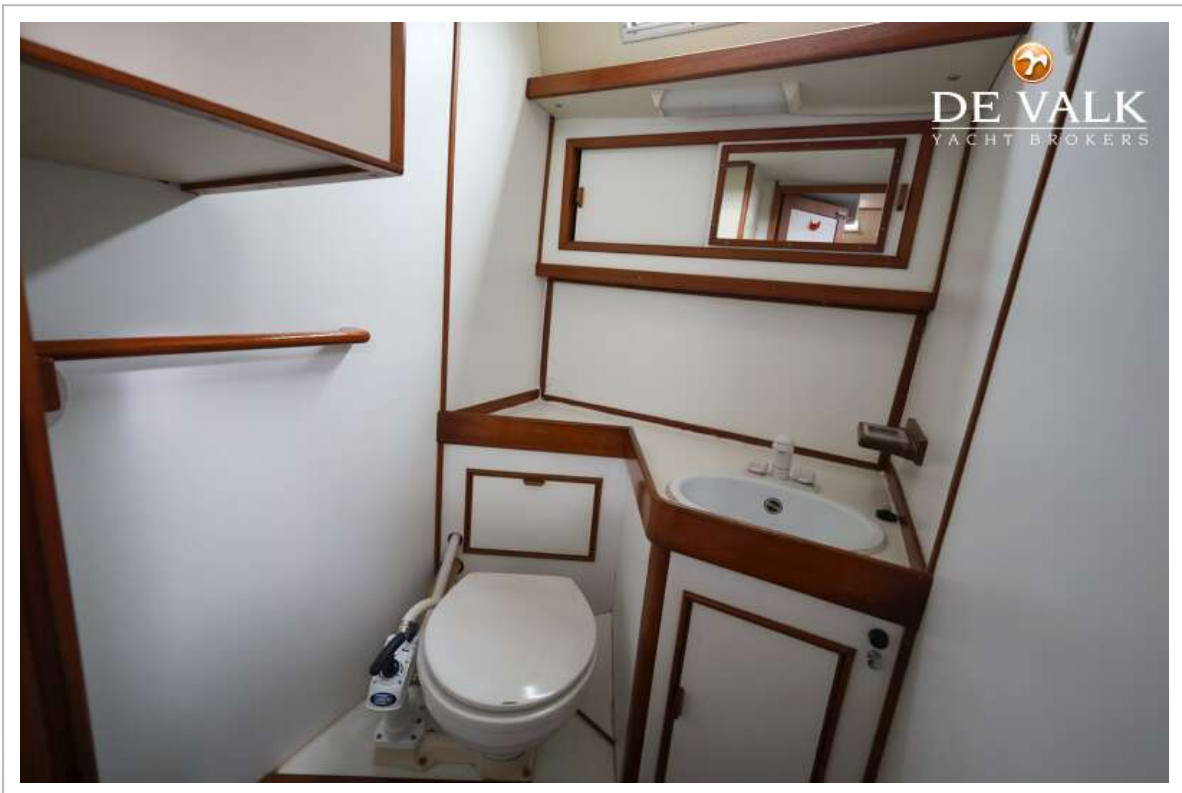
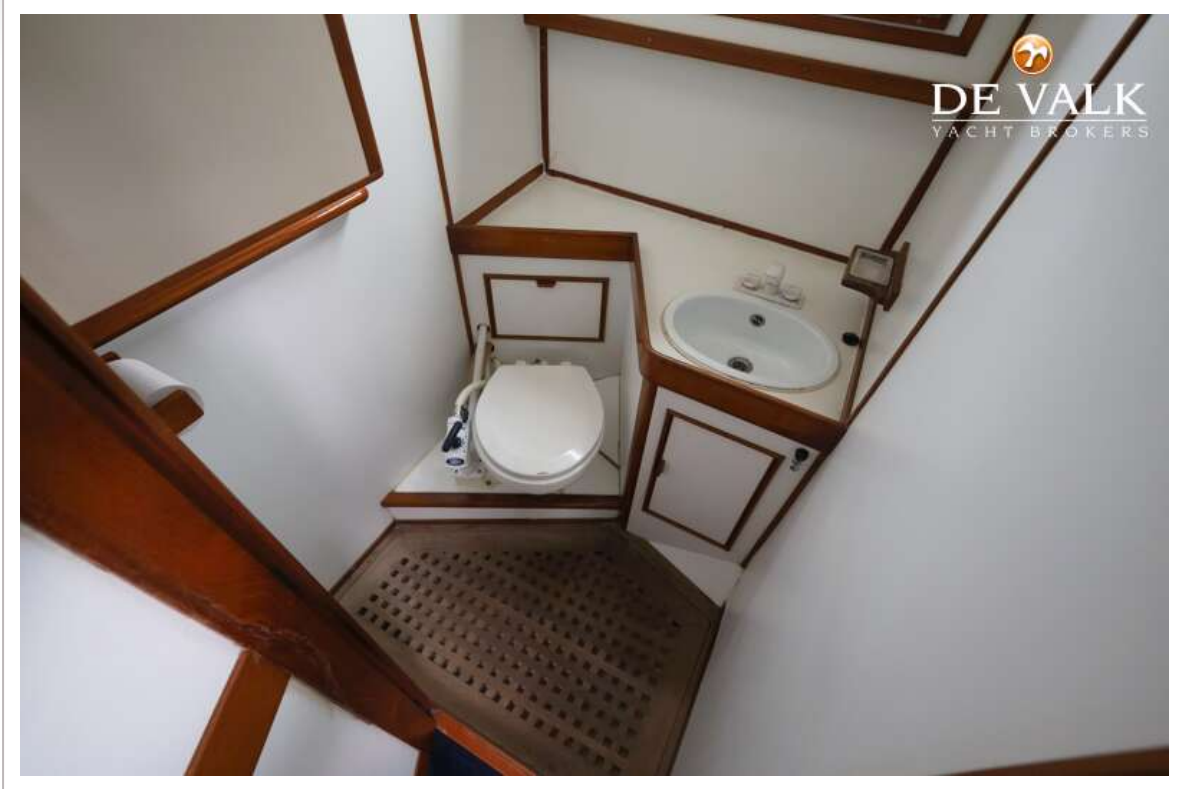
# BOWMAN 49 KETCH



# BOWMAN 49 KETCH

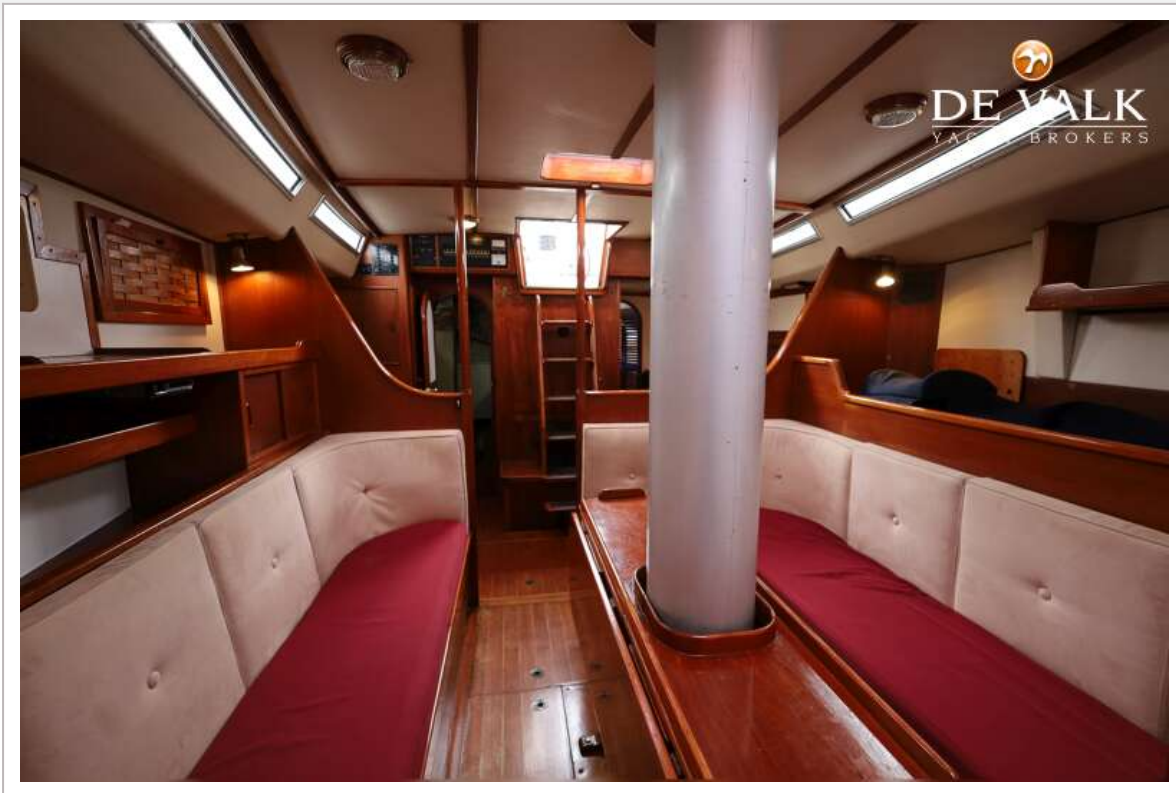


# BOWMAN 49 KETCH

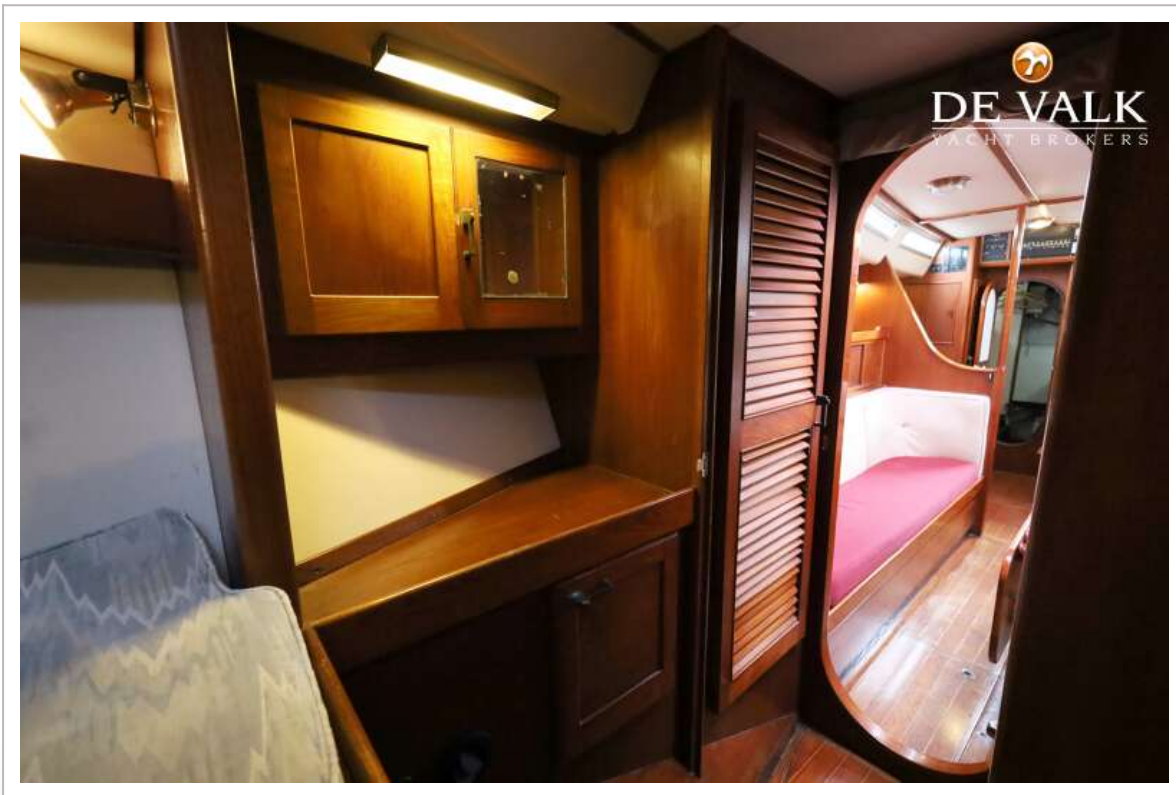
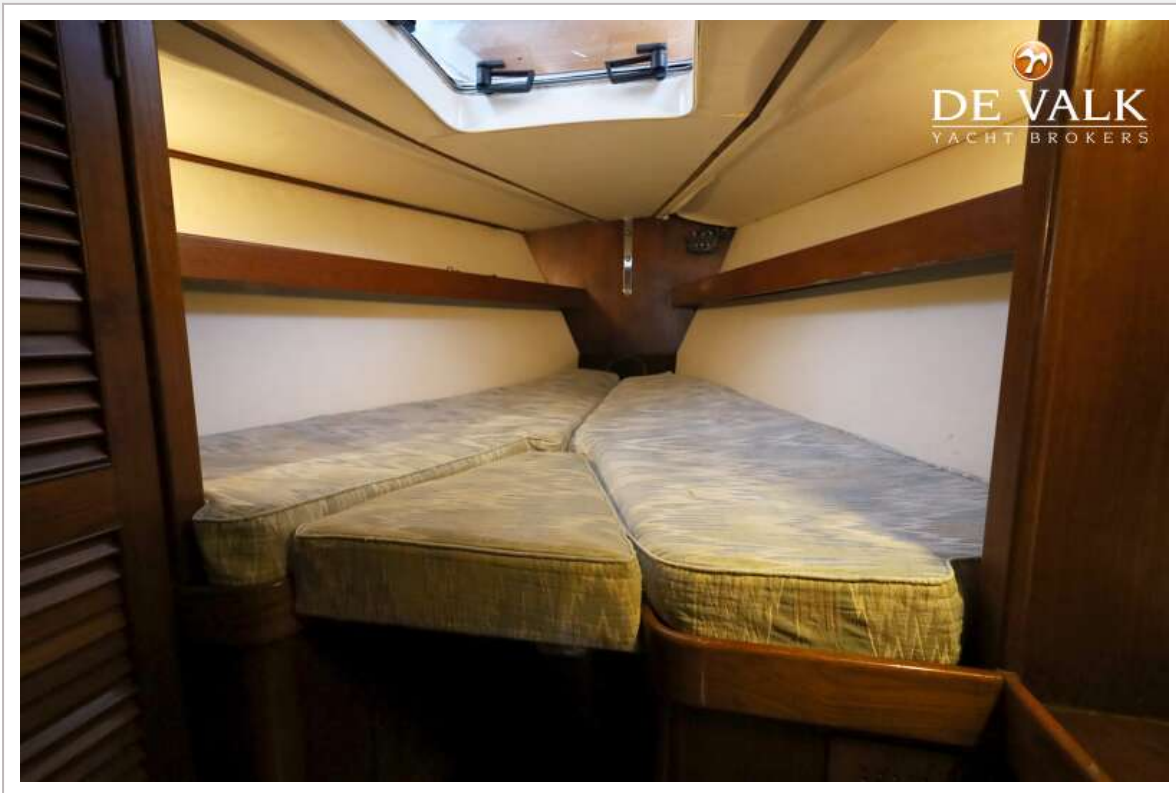




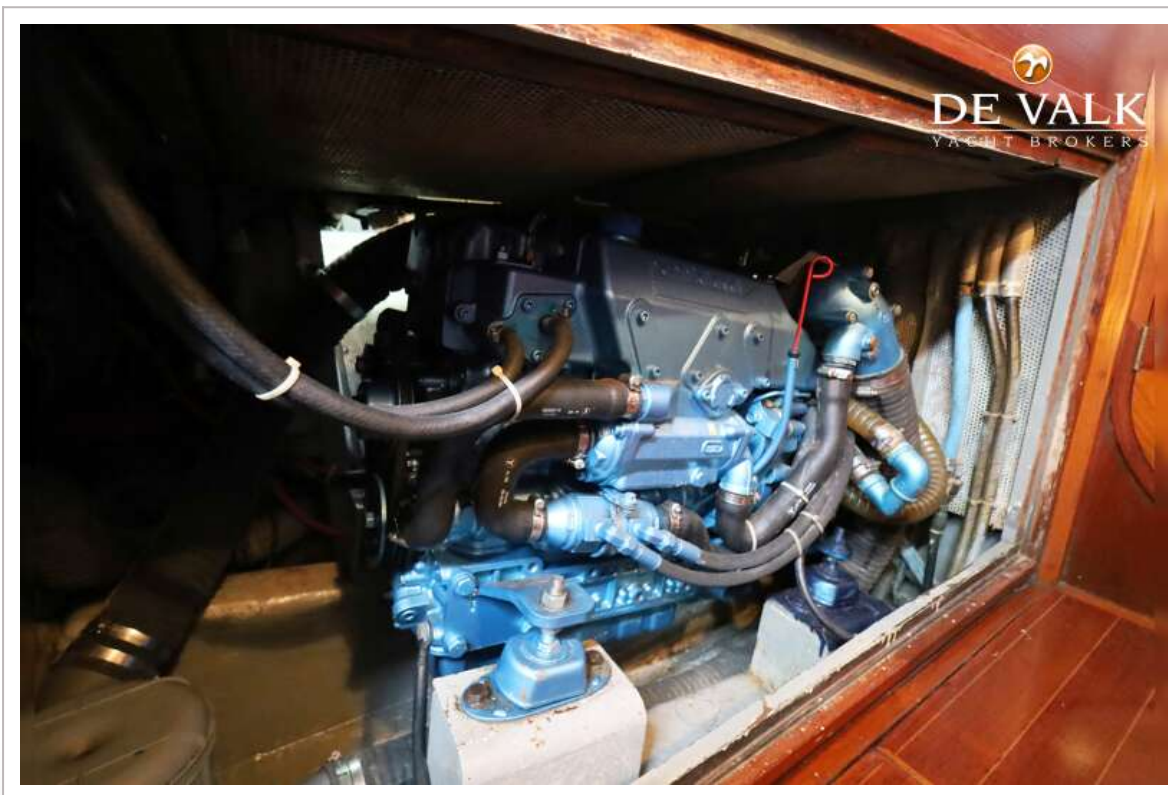
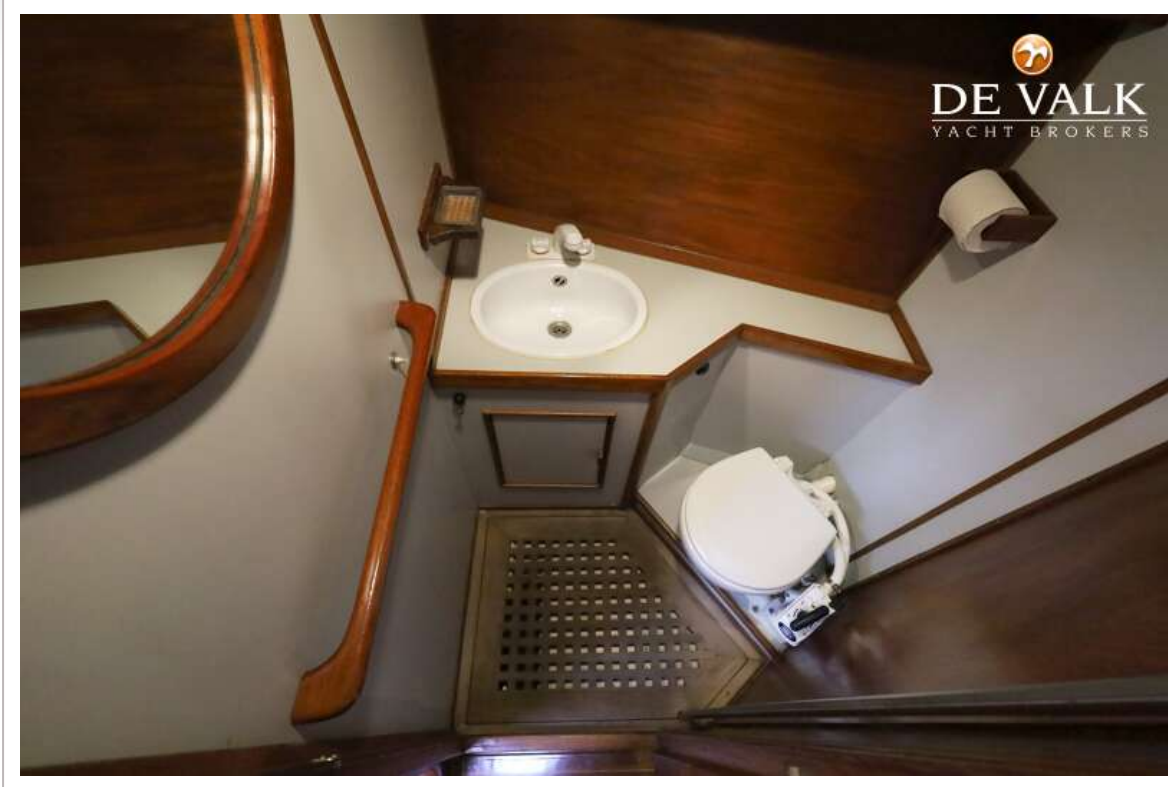
# BOWMAN 49 KETCH



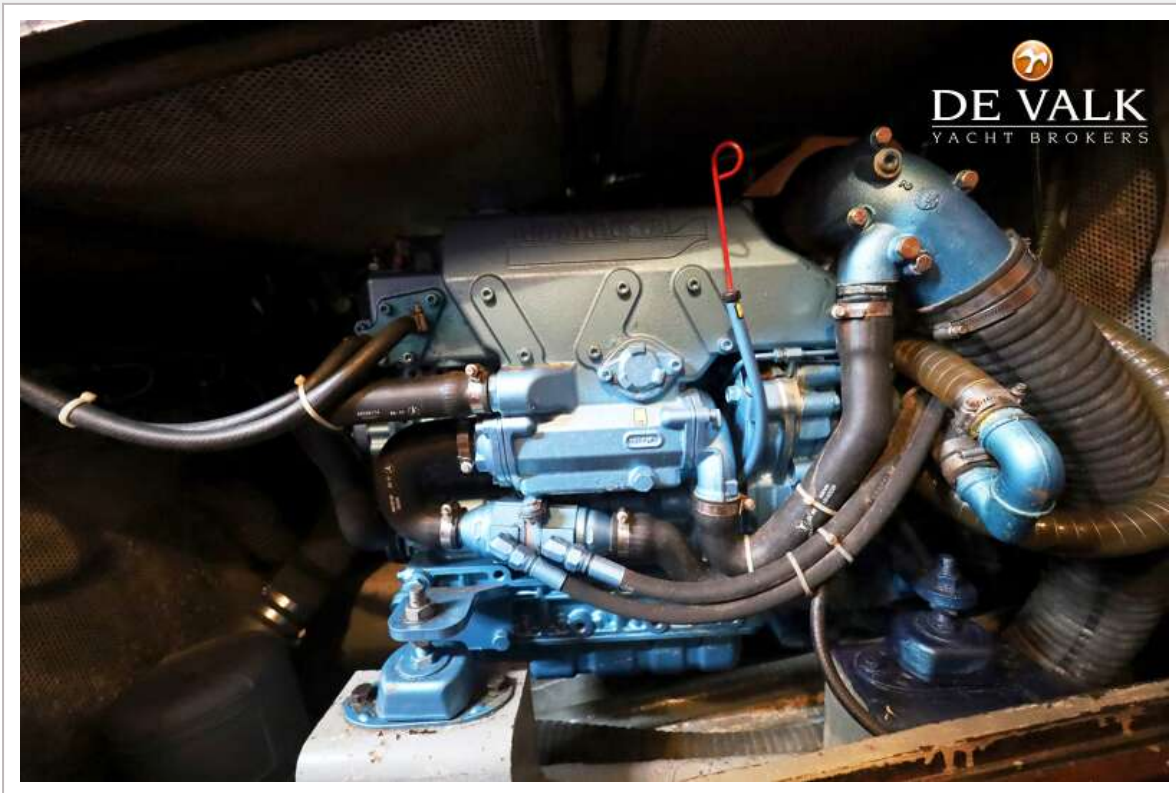
# BOWMAN 49 KETCH



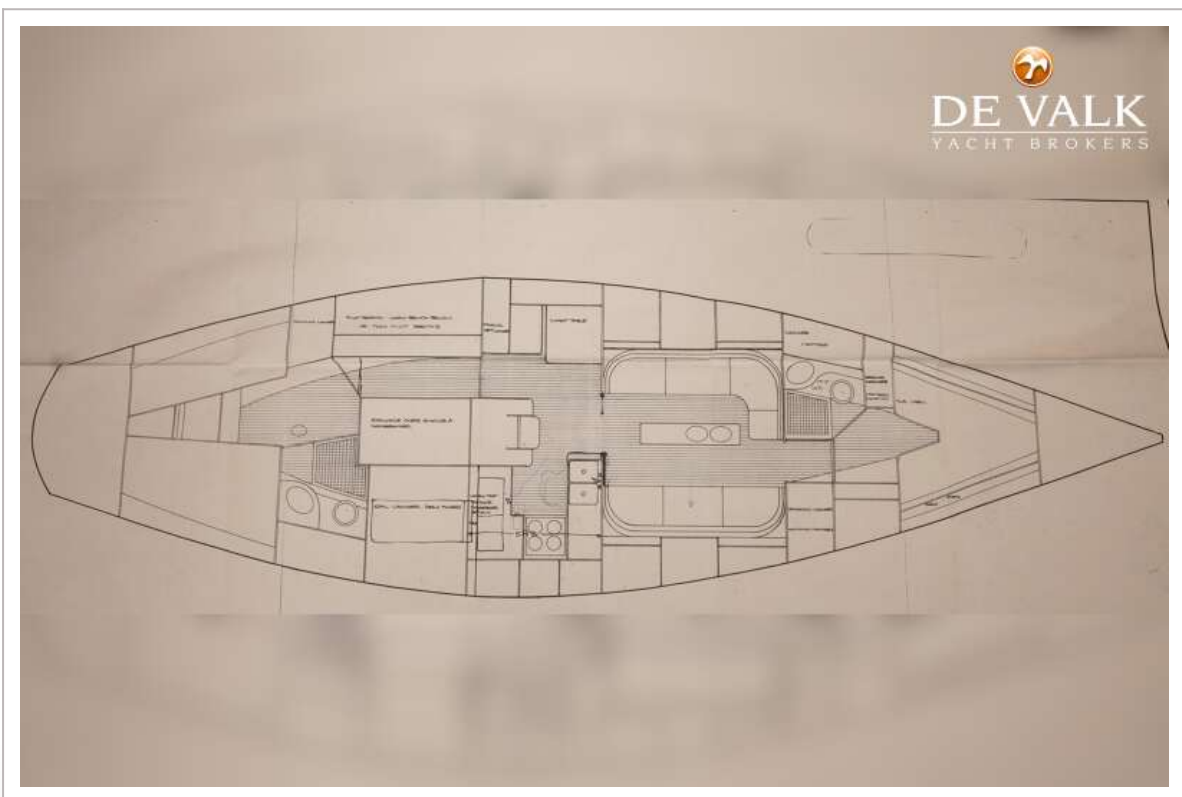
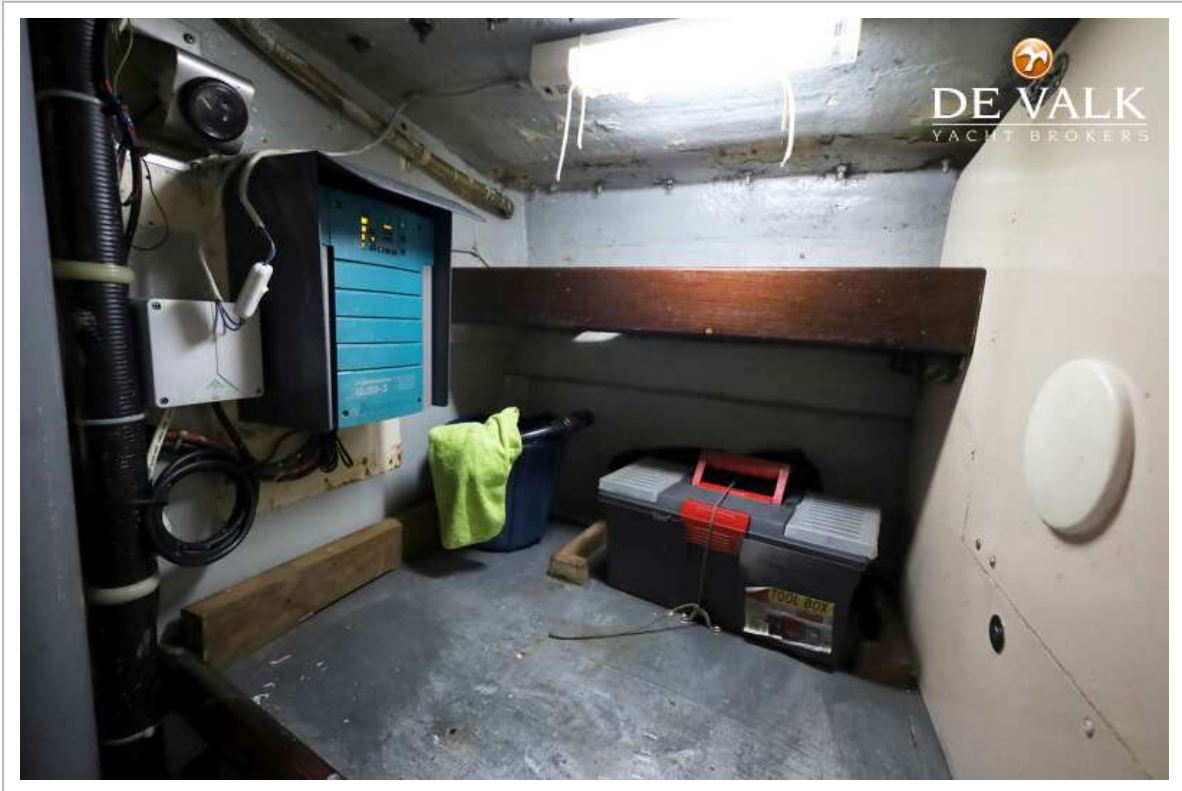
# BOWMAN 49 KETCH



# BOWMAN 49 KETCH



# BOWMAN 49 KETCH



# BOWMAN 49 KETCH

