



DE VALK
YACHT BROKERS



CARENA 47 PILOTHOUSE



DE VALK
YACHT BROKERS

CARENA 47 PILOTHOUSE

KOMMENTARE DES MAKLERS

Beautiful Custom Built Yacht for a Lifetime ! The current (first) owner has recently carried out a complete professional refit on the Carena 47 and no expense has been spared. The boat is very suitable for long sea voyages and also for permanent residence. The boat is easily operated by a small crew. The hull is Corten steel, the deck is steel and the superstructure is aluminum.

Jan-Ward van Dantzig

TECHNISCHE DATEN

Maße	14.04 x 4.00 x 1.90 (m)	Werft	G.M. Yachting - Stellendam
Baujahr	1996	Kabinen	2
Material	Stahl	Kojen	5
Motor(en)	1 x Yanmar 4JH4-TE diesel	PS/kW	75.00 (PS), 55.20 (kW)
Verkaufspreis	verkauft (MwSt.)	Liegeplatz	elsewhere / nicht im Verkaufsbüro

KONTAKT

Verkaufsbüro	De Valk Sint Annaland	Telefon	+31 166 601 000
Adresse	Koelhuisweg 4 4697 RM Sint Annaland The Netherlands	E-Mail	sintannaland@devalk.nl

HAFTUNGSAUSSCHLUSS

Diese Angaben erfolgen nach bestem Wissen, können jedoch nicht garantiert werden.



ALLGEMEIN

Modell	CARENA 47 PILOTHOUSE
Typ	Segelyacht
Rumpflänge (m)	14,04
Wasserlinienlänge (m)	12,45
Breite (m)	4,00
Tiefgang (m)	1,90
Durchfahrtshöhe (m)	20,30
Stehhöhe (m)	2,00
Baujahr	1996
Lancierung	1998, 2000 and 2022
Werft	G.M. Yachting - Stellendam
Land	Niederlande
Entwerfer	Hull design based on Carena 36 (Lemstra)
Gewicht (t)	14,5
Ballast (Ton)	Blei in Stahl 4
CE Norm	NA
Rumpfmateri al	Stahl
Rumpffarbe	Beige Re-painted in 2022
Haut-dicke Rumpf (mm)	5 mm corten steel (1996)
Rumpfform	S-Spant Corten steel hull sandblasted to SA 2.5 (before first painting)
Art Kiel	Langkieler Semi - Long keel
Material Aufbauten	Aluminium (1996)
Haut-dicke Deck (mm)	5 mm (1996)
Stossliste	Edelstahl
Deckmaterial	Stahl
Deck Finish	TBS Antirutsch Belag (New in 2021/2022). White painted deck (2021/2022)
Deck Finish Aufbauten	Teak (New 2012+refit 2021). White painted superstructure (2021/2022)



CARENA 47 PILOTHOUSE

Pflicht Bedeckung	Teak (New in 2012 + refit in 2021). White painted cockpit (2021/2022)
Antifouling (Jahr)	2022
Dorado Belufter	Aluminium with plastic air-vents (4 x air-vent : New in 2022)
Fenster Einfassung	Aluminium
Fenster Material	Doppelverglasung Hora tempered and harded glass (10 mm and 6 mm - 1998)
Decksluke	Lewmar (1998) with beige covers (2020)
Bullauge	Edelstahl
Isolation	Schaum (40 - 50 mm) (2000)
Treibstofftank (Liter)	Stahl 450 L (in the keel - 1996)
Treibstof Tagestank (Liter)	Aluminium 90 L (2000)
Füllstandsanzeige (Tagestank)	ja
Trinkwassertank (Liter)	Stahl 1000 L (cemented steel - 2000)
Fäkaelien Tank (Liter)	Stahl 350 L (not connected at this moment - 1996)
Radsteuerung	Stainless steel covered with leather (1996)
Innerhalb Steuerung	Via the autopilot (2000)
Aussen Steuerung	Kabelsteuerung Connected on to the quadrant (1996)
Weitere Info Rumpf	Epoxy on underwater hull before first layor antifouling applied
Weitere Info	Stainless steel hawse-holes, gunwales, stanchion bases, bowsprit

UNTERKUNFT

Kabinen	2
Kojen	5
Innen	Mahagoni (2000)
Fussboden	Holz Mahogany
Achterdeck	ja
Ruderhaus/Decksalon	ja
Salon	ja
Standhöhe Salon (m)	1,90 - 2,10 - 2,60
Heizung	wasserheizung Webasto 90 Pro (New in 2020)



CARENA 47 PILOTHOUSE

Kartentisch	On port side
Achterkabine	With two persons bed (across)
Kombüse	On port side
Arbeitsfläche	Duropal
Spülbecken	Edelstahl
Herd	Gas Stainless steel Force 10 with 3 burners (2000)
Ofen	Stainless steel Force 10 (2000)
Gas-Alarm	New (not mounted yet)
Kühlschrank	Top-loader with a cold battery (Isotherm watercooled compressor)
Warmwasser System	220V + Motor Isotherm boiler (2014)
Wasserdruck System	elektrisch (2000)
Geschirrausstattung	ja
Eignerkabine	Doppelbett
Länge Bett (m)	2,00 - 2,30 x 1,70
Kleiderschrank	hängend/Schublad/Regale
Badezimmer	en suite
Toilet	en suite
Toilette System	elektrisch Jabsco (New in 2020)
Handwaschbecken	im Badezimmer
Dusche	en suite
Gästekabine 1	V-Bett
Länge Bett (m)	2,00 x 1,70
Kleiderschrank	hängend/Schublad/Regale
Badezimmer	en suite
Toilette	en suite
Toilette System	handbetrieb Jabsco
Handwaschbecken	im Badezimmer
Dusche	en suite

MASCHINEN



CARENA 47 PILOTHOUSE

Motoranzahl	1
Marke	Yanmar
Typ	4JH4-TE
PS	75
kW	55.20
Kraftstoffart	Diesel
Installiert im Jahr	2007
Höchstgeschwindigkeit (Kn)	9
Marschgeschwindigkeit (Kn)	7,5
Verbrauch (l/h)	3,6
Motorstunden	1810
Kühlungssystem Motor	indirekte Wärmetauscher (New in 2007)
Antrieb	Schraubenwelle
Motor bedienung	Seilzug Kabel (New in 2007)
Gewende getriebe	mechanisch (New in 2007)
Bugschraube	elektrisch Cram - twinprop (installed in 2000)
Exhaust	wassergekühlt
Wellen Drucklager	Aqua Drive and CV (Constant Velocity) Joint (both from 2000)
Propeller Typ	fest (New in 2007)
Propellerblätter	3
Material Propellerwelle	Edelstahl (New in 2007)
Propellerwelle schmierung	Wasser Volvo Seal (New in 2017)
Hand Bilgenpumpe	(1997)
Elektrische Bilgenpumpe	(2000)
Bilge Alarm	(2000)
Elektrische Anlage	12 and 220 Volt
Batterien	4 x
Starterbatterie	1 x Varta 95 Ah (New in 2022)
Versorgungsbatterie	2 x Varta 190 Ah (New in 2022)
Bugschraubebatterie	1 x Varta (New in 2019)
Batterie Monitor	Mastervolt Battery Monitor BTM-1 (2000)
Batterie Ladegerat	Victron Pallas-TG 12V-50A (2000)



Umwandler	Victron Phoenix Inverter Compact 12V / 230V - 2000W (2012)
Solar panele	2x 140W with ProStar-30 SolarChargeController (All new in 2021)
Dioden-Batterie-Koppler	ja
Landstrom	mit Kabel
Trenn transformator	Victron Isolation Transformer 3600 Watt (2007)
Weitere Info	80 A Alternator on the engine (2007)
Weitere Info	Original engines replaced in 2000 and replaced again in 2007

NAVIGATION

Kompass	Plath (2000)
Elektrisches Kompass	For the autopilot (2000)
Tiefenanzeige	Simrad IS50 (New in 2014)
Logge	Simrad IS50 (New in 2014)
Windlupe anzeige	Simrad IS50 (New in 2014)
Tochter anzeige	1x Simrad IS12 Mega (New in 2014) at the chart table
UKW	1x Simrad RD68 (New in 2014) and 1x Furuno FM-2510 (2000)
Portabel UKW	Icom IC-M21 Water Resist (2000)
Autopilot	Simrad (hydraulic drive) with remote inside and outside (2000)
Ruderwinkel Anzeige	In the autopilot (2000)
Radar	Raymarine (2000) in Pilothouse (New dome in 2010)
GPS	1x Furuno GP-32 (2000) and 1x Simrad
Plotter/GPS	B&G Z12 in Pilothouse (New in 2017)
Navtex	Furuno NX-300 (2000)
Elektronische Kart(en)	Navionics Platina (updated in 2020)
AIS Transceiver	Simrad AI50 Class B (New in 2017)
Sender Vorrichtung	Icom 706MKIIG - Spit with Icom PactorModem III Transmitter(2000)
Epirb	Satellite 2 - 406 (2000)
Navigation Beleuchtung	LED (New from 2022)
Weitere Info	Stainless steel antenna pole on stern (2000)



AUSRÜSTUNG

Spritzverdek	Beige (New in 2020)
Sonnenschirm	1 x smal (with side flaps) and 1 x large (2003)
Winterplane	Cover over the teak in the cockpit (2001)
Cockpit Tisch	Teak (2000)
Badeleiter	Edelstahl , can be mounted at the opening gates on both sides (2000)
Heckdusche	Via window
Anker	Spade Anchor (New in 2022)
Ankerkette	10 mm 60 meter galvanised (2012)
Anker 2	Fortress With 10 meter lead weighted anchor line and 60 meter anchor line
Ankerwinde	elektrisch MUIR VFF 1650 (mounted below deck in 2000)
Ausserborder Halterung	Teak (2007)
Davits	Edelstahl (2007)
Davits bedienung	handbetrieb
Deck Kran	handbetrieben Simpson in stainless steel (2007)
See Reling	Stainless steel - double wired (New from 2022)
Seiten-Einstieg Seereling	Stainless steel - on port and starboard side (2000)
Heckkorb	Stainless steel (2000)
Bugkorb	Stainless steel (2000)
Rettungsinsel (Pers)	Container 4 persons Plastimo Transocean Type 1 Groupe A (New from 2022)
Schwimvesten	3 x
Sicherheits Rustung	3 x
Rettungsboje	ja
Markierboje	ja
Sicherheitsleine auf Deck	Belt on deck
Horn	Manual
Radar Reflektor	Tri-Lens (2000)
Fenderkissen	ja
Festmacher	ja



Radio-CD Spieler	Pioneer MixTrax
I-Pod Anschluss	ja
Lautsprecher im Salon	2 x
Feuerlöscher	2 x
Letzte Wartung Feuerlöscher	Need to be surveyed / replaced
Weitere Info	Fire-Blanket

RIGG

Rig	Sloop-Kutter
Stehendes Gut	Main rigging in Dyform and the rest of the rigging in 10 mm wire
Marke Mast	Holland Spar (1998)
Material Mast	Aluminium White painted in 2021/2022
Salings	2 x 2 spreaders - white painted in 2021/2022
Großsegel-Persenning	Beige (2015)
Latten traveller	3 x (2000)
Durchelatted großsegel	De Vries Sails Semi-Fully battened (2000)
Fock	De Vries Sails Cutter Jib (2007) with UV protection strip
Genua	De Vries Sails (2000) with reef tape and UV protection strip
Rollreffanlage	Manual Furlex 300S (2000)
Kutter Rollreffanlage	Manual Furlex 200S (2007)
Reff Vorrichtung	Reffleinen 3 x reef
Baumniederholer	Gasdruckfeder (New in 2020) - Holland Spar - white painted in 2021/2022
Sekundaire Schot Winschen	Stainless steel Andersen 2 x 46 ST (1998)
Genua Schotwischen	Stainless steel Andersen 2 x 52 ST (1998)
Fall Winschen	Stainless steel Andersen 2 x 40 ST (on the mast in 1998)
Reff Wunsch	1 x (1998)
Spi-Baum	Aluminium (2000)
Weitere Info	Lazy-Jacks, Backstays, Babystay. Lewmar Genoa tracks on deck
Weitere Info	Standing rigging checked by Holland Spar in 2022



CARENA 47 PILOTHOUSE



CARENA 47 PILOTHOUSE



CARENA 47 PILOTHOUSE



CARENA 47 PILOTHOUSE



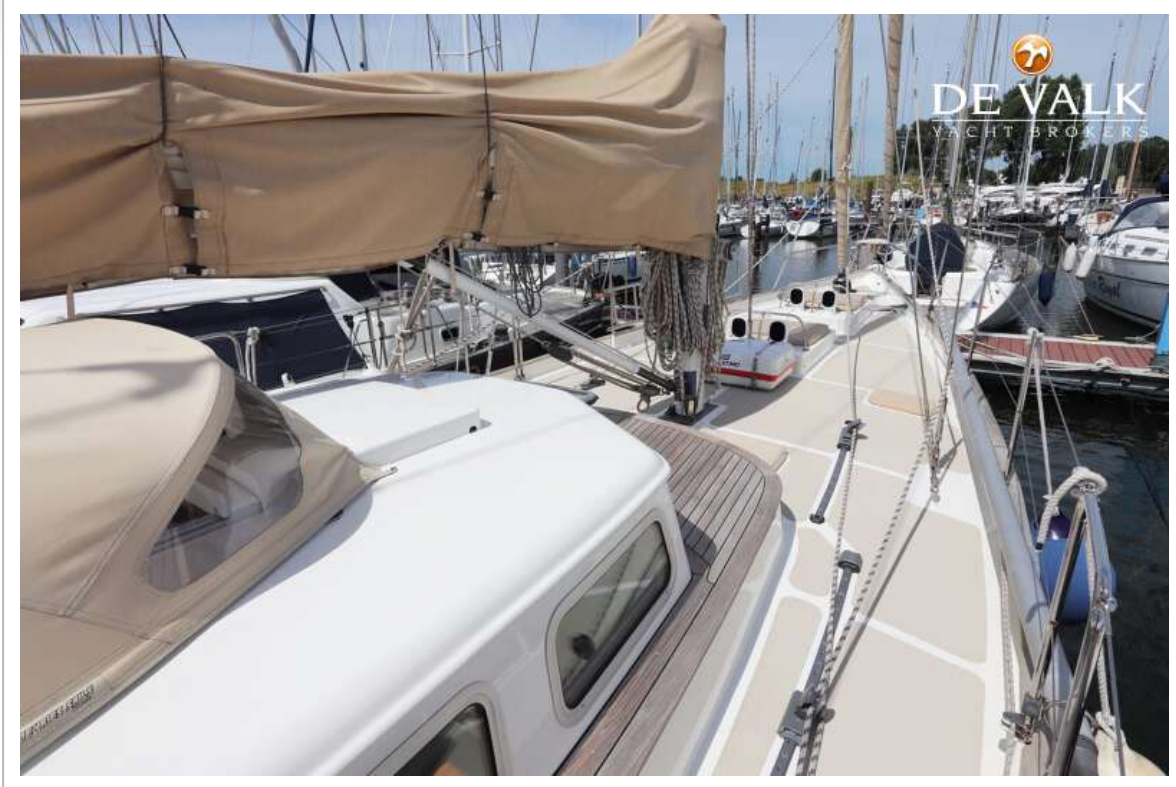
CARENA 47 PILOTHOUSE



CARENA 47 PILOTHOUSE



CARENA 47 PILOTHOUSE



CARENA 47 PILOTHOUSE



CARENA 47 PILOTHOUSE



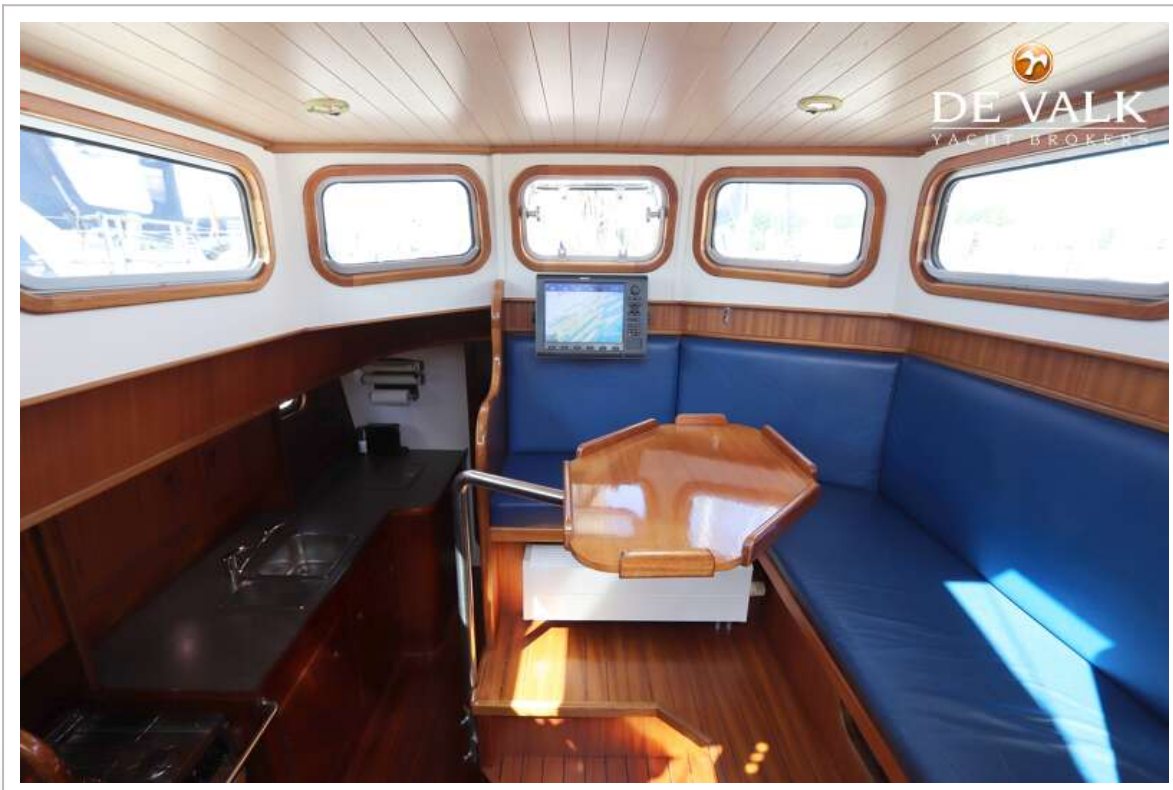
CARENA 47 PILOTHOUSE



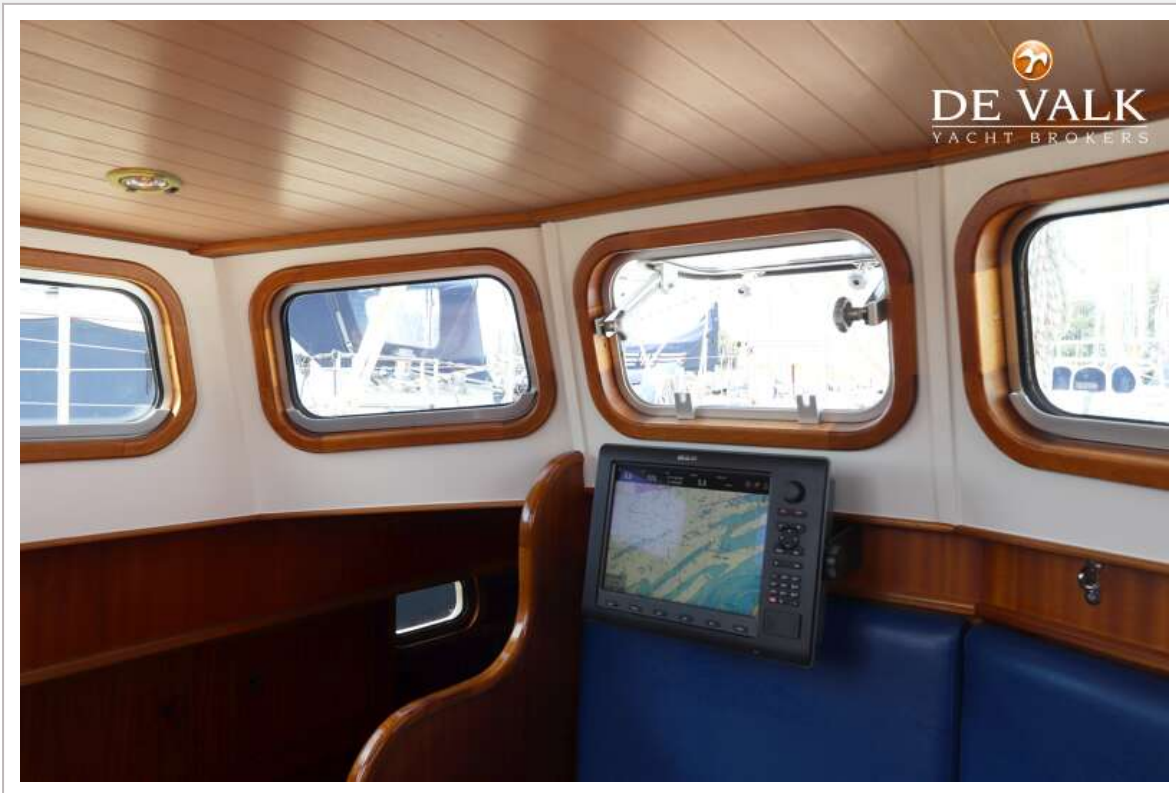
CARENA 47 PILOTHOUSE



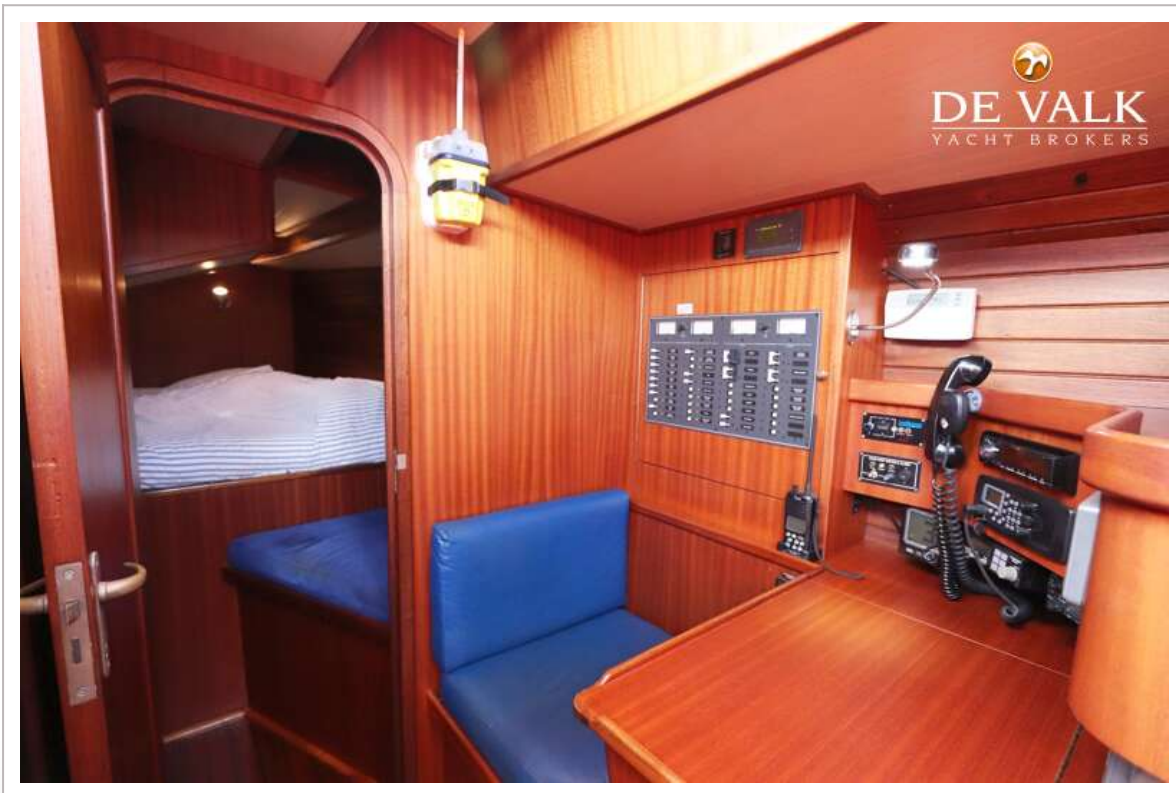
CARENA 47 PILOTHOUSE



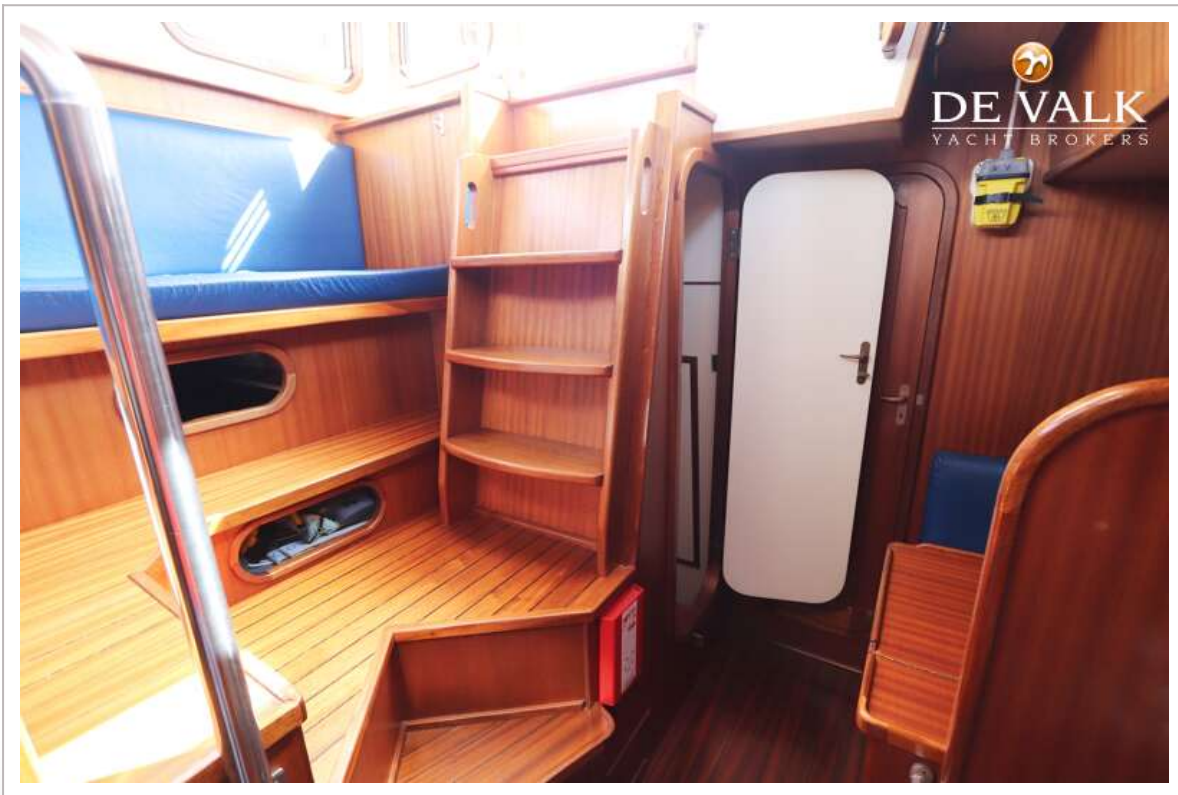
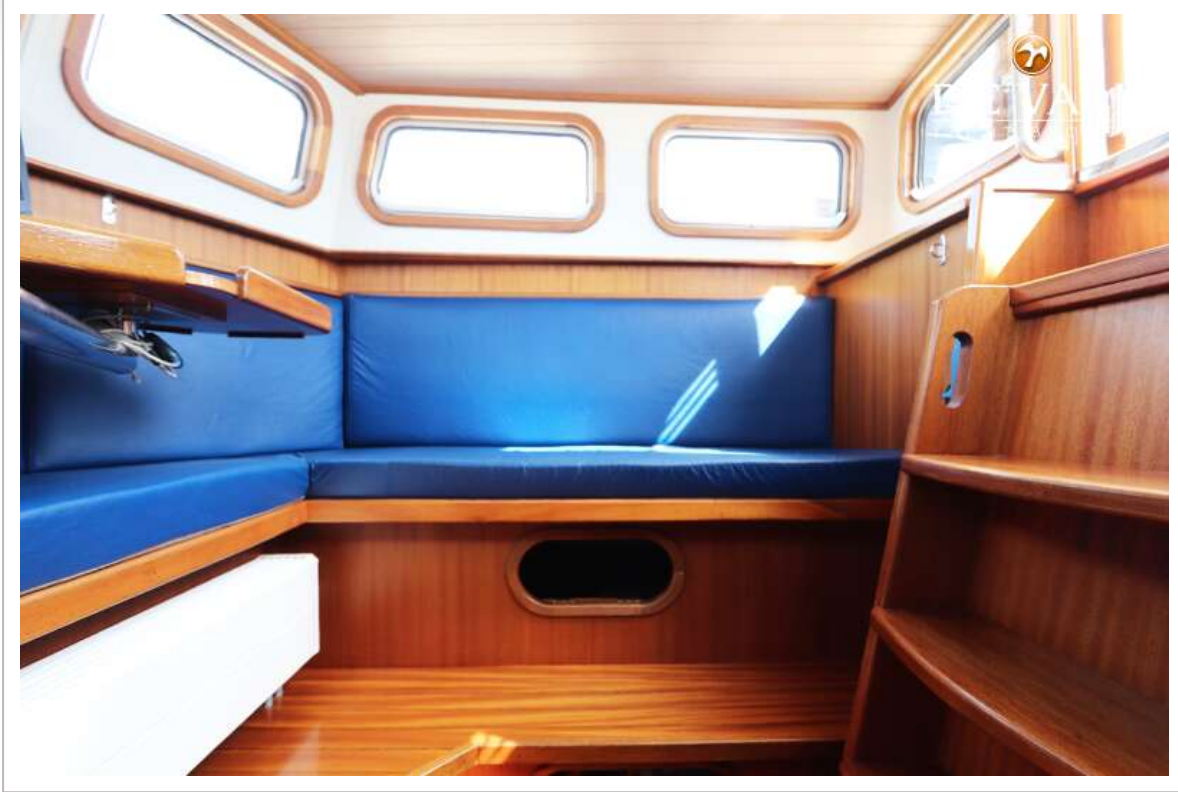
CARENA 47 PILOTHOUSE



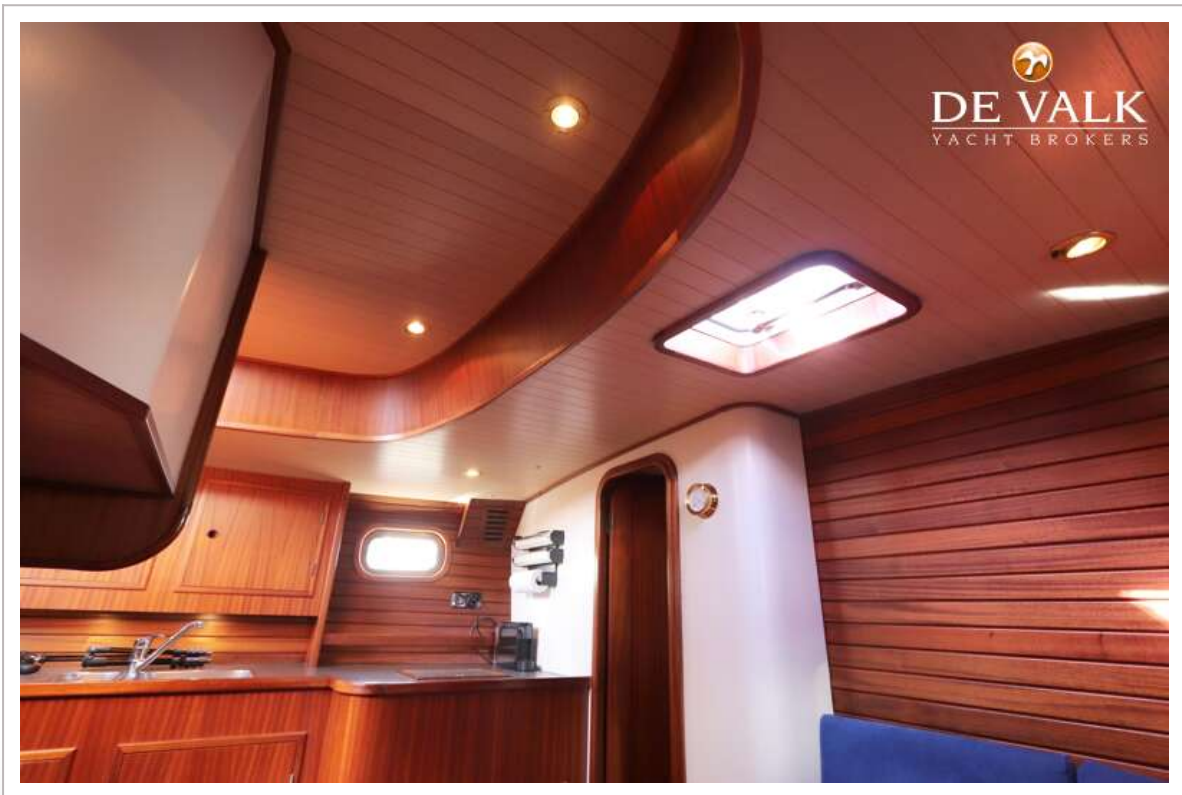
CARENA 47 PILOTHOUSE



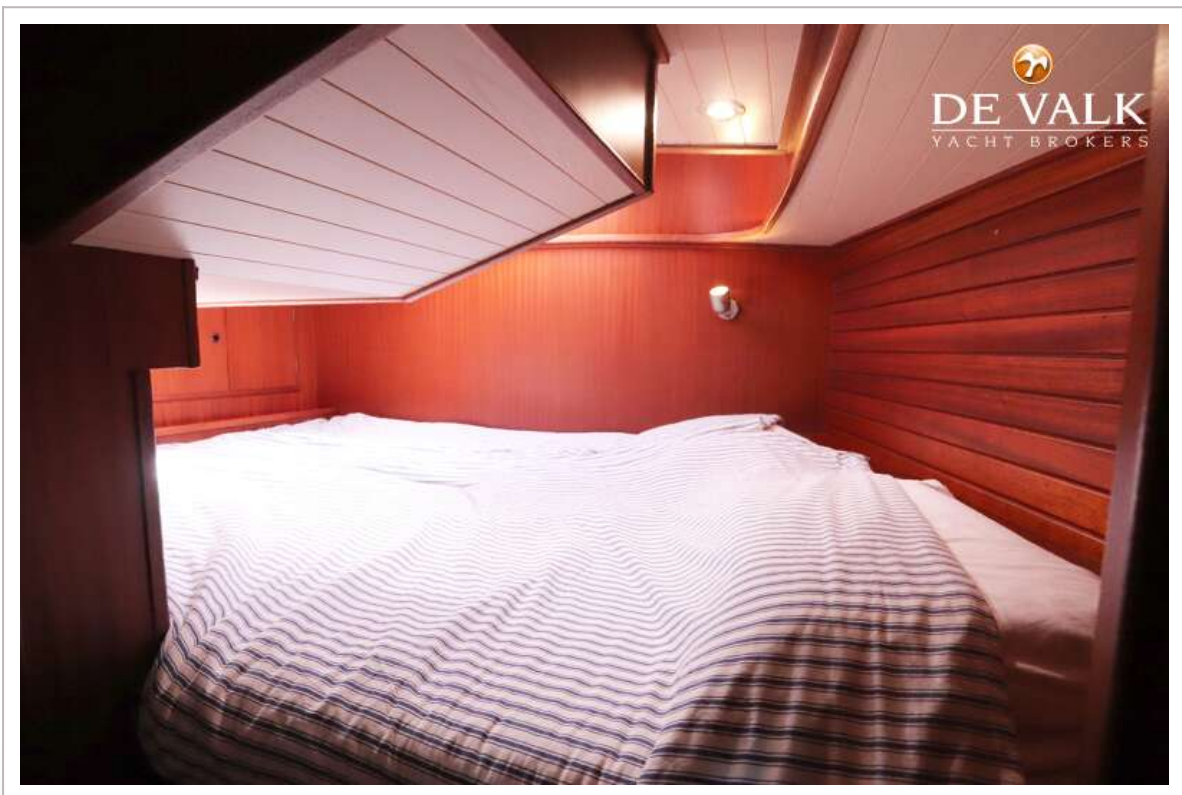
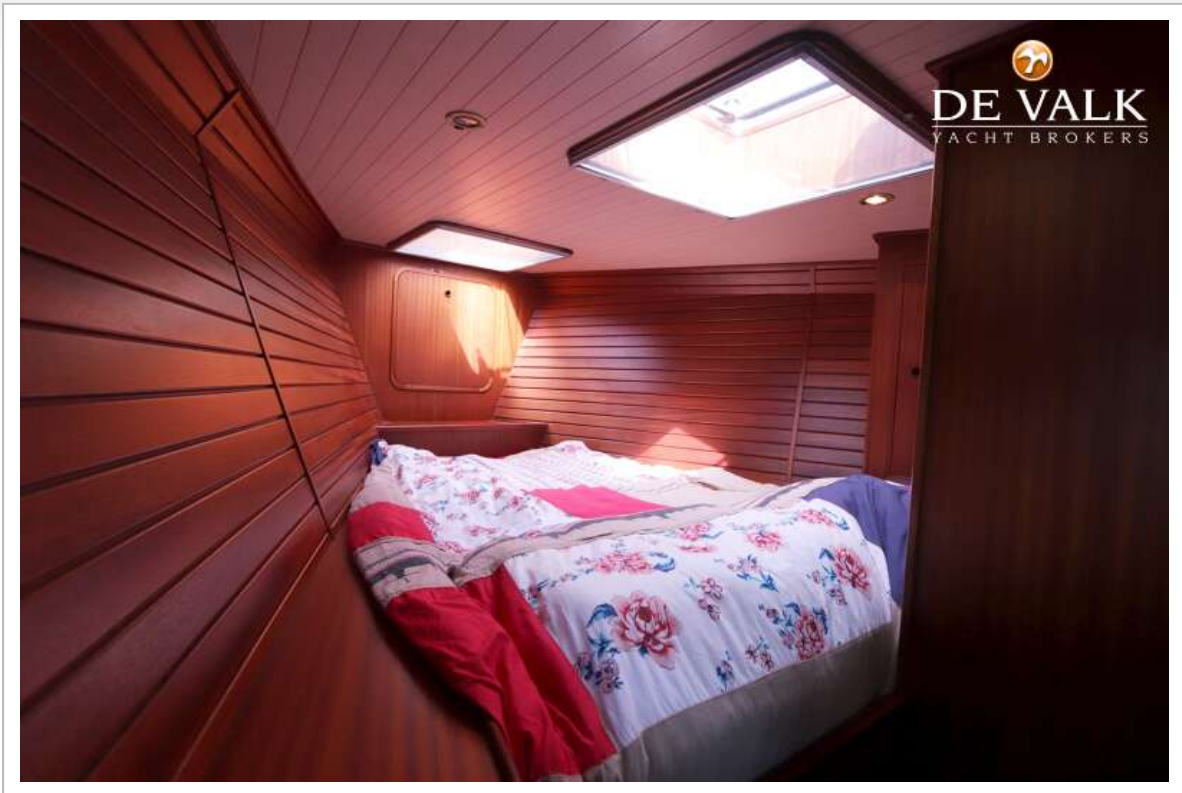
CARENA 47 PILOTHOUSE



CARENA 47 PILOTHOUSE



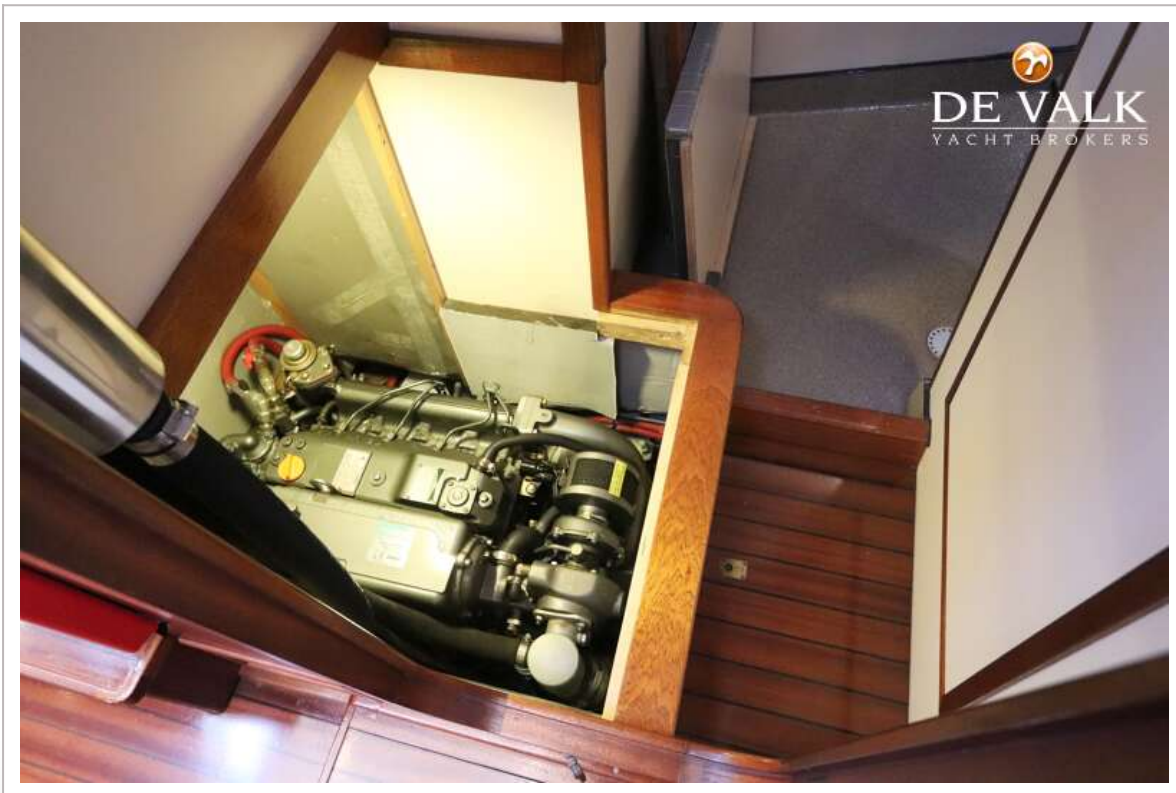
CARENA 47 PILOTHOUSE



CARENA 47 PILOTHOUSE



CARENA 47 PILOTHOUSE



CARENA 47 PILOTHOUSE



CARENA 47 PILOTHOUSE

