



## WALLY 94



DE VALK  
YACHT BROKERS

## KOMMENTARE DES MAKLERS

INTI CUBE is a 28.55 m Sail Yacht, built in Italy by Wally and delivered in 2005. She is one of 4 94 models. She can accommodate up to 8 guests in 4 staterooms, with 4 crew members waiting on their every need. She was designed by Luca Bassani Design, The naval architecture was developed by German Frers. She is built with a Carbon Fibre and Teak deck, a Carbon Fibre hull, and Carbon Fibre superstructure.

*Valerio Biondi*

## TECHNISCHE DATEN

<b>Maße</b>	28.54 x 6.40 x 4.20 (m)	<b>Werft</b>	WALLY
<b>Baujahr</b>	2005	<b>Kabinen</b>	3
<b>Material</b>	Kohlefaser	<b>Kojen</b>	6
<b>Motor(en)</b>	1 x Cummins diesel	<b>PS/kW</b>	250.00 (PS), 184.00 (kW)
<b>Verkaufspreis</b>	€ 1.900.000 (MwSt. Bezahlt)	<b>Liegeplatz</b>	

## KONTAKT

<b>Verkaufsbüro</b>	De Valk Antibes	<b>Telefon</b>	+33 492 91 0202
<b>Adresse</b>	2, Avenue de Verdun 06600 Antibes France	<b>E-Mail</b>	antibes@devalk.nl

## HAFTUNGSAUSSCHLUSS

Diese Angaben erfolgen nach bestem Wissen, können jedoch nicht garantiert werden.



## ALLGEMEIN

<b>Modell</b>	WALLY 94
<b>Typ</b>	Segelyacht
<b>Rumpflänge (m)</b>	28,54
<b>Wasserlinienlänge (m)</b>	26,68
<b>Breite (m)</b>	6,40
<b>Tiefgang (m)</b>	4,20
<b>Baujahr</b>	2005
<b>Werft</b>	WALLY
<b>Entwerfer</b>	Luca Bassani Design
<b>Gewicht (t)</b>	45
<b>Brutto tonnage</b>	62 tons
<b>Netto tonnage</b>	18 tons
<b>Rumpfmateriale</b>	Kohlefaser
<b>Rumpffarbe</b>	Metallic
<b>Art Kiel</b>	Wulstkiel
<b>Material Aufbauten</b>	Kohlefaser
<b>Deckmaterial</b>	Kohlefaser
<b>Deck Finish</b>	Teak
<b>Treibstofftank (Liter)</b>	1800 lt
<b>Trinkwassertank (Liter)</b>	1200 lt
<b>Fäkaelien Tank (Liter)</b>	150 lt
<b>Grauwassertank (Liter)</b>	150 lt

## UNTERKUNFT

<b>Kabinen</b>	3
<b>Kojen</b>	6
<b>Mannschaftskabine</b>	2
<b>Mannschaftskojen</b>	4
<b>Klima Anlage</b>	Condaria (new 2012)
<b>Kombüse</b>	ja



<b>Herd</b>	Techimpex (2016)
<b>Ofen</b>	Techimpex (2016)
<b>Mikrowelle</b>	Siemens
<b>Kuhlschrank</b>	Frigomar drinks fridge
<b>Gefrier Truhe</b>	Frigomar fridge-freezer [3 x units in the galley]
<b>Warmwasser System</b>	200 lt Gianneschi
<b>Geschirrspulmaschine</b>	Bosh (2017)
<b>Kochend-Wasserhahn</b>	ja
<b>Eignerkabine</b>	Französisch Bett Two
<b>Länge Bett (m)</b>	Queen size
<b>Badezimmer</b>	en suite
<b>Toilet</b>	en suite Tecma Silence
<b>Toilette System</b>	elektrisch
<b>Handwaschbecken</b>	im Badezimmer
<b>Dusche</b>	en suite
<b>Weitere Info</b>	Including an office
<b>Gästekabine 1</b>	Doppelbett Two
<b>Badezimmer</b>	en suite
<b>Toilette</b>	en suite Tecma Silence
<b>Toilette System</b>	elektrisch
<b>Handwaschbecken</b>	im Badezimmer
<b>Dusche</b>	en suite
<b>Gästekabine 2</b>	Zwei Einzelbetten Pullman
<b>Badezimmer</b>	en suite
<b>Toilette</b>	en suite Tecma Silence
<b>Toilette System</b>	elektrisch
<b>Handwaschbecken</b>	im Badezimmer
<b>Dusche</b>	en suite
<b>Waschmaschine</b>	Samsung (2016)

## MASCHINEN



<b>Motoranzahl</b>	1
<b>Marke</b>	Cummins
<b>PS</b>	250
<b>kW</b>	184
<b>Kraftstoffart</b>	Diesel
<b>Installiert im Jahr</b>	2017
<b>Höchstgeschwindigkeit (Kn)</b>	12
<b>Marschgeschwindigkeit (Kn)</b>	10
<b>Verbrauch (l/h)</b>	20
<b>Reichweite (nm)</b>	900
<b>Motorstunden</b>	3000
<b>Bugschraube</b>	Maxpower
<b>Propeller Typ</b>	Gori
<b>Propellerblätter</b>	3
<b>Propellerwelle schmierung</b>	Öl 20 lit
<b>Generator</b>	Cummins Onan 22.5kw
<b>Betriebsstunden Generator</b>	3000 (new 2017)
<b>Batterien</b>	200/Ah x 24 V
<b>Umwandler</b>	2x 1500 w
<b>Wasserbereiter</b>	Tecnicomar 200lt/h

## NAVIGATION

<b>Kompass</b>	Sunto magnetic compass and B&G Gyro compass
<b>Multi Control Display</b>	B&G Hercules 3000: 7 x FFD
<b>Tiefenanziege</b>	B&G
<b>Logge</b>	B&G
<b>Windlupe anzeige</b>	B&G
<b>UKW</b>	2x fixed Sailor / Raython
<b>Autopilot</b>	B&G
<b>Radar</b>	Raython
<b>GPS</b>	2 x Laica + Raython



<b>Plotter</b>	3 x Raymarine hybrid touch Chartplotter
<b>Elektronische Kart(en)</b>	Raython
<b>AIS Empfänger</b>	Raymarine AIS 50
<b>Epirb</b>	Mc Murdo

## AUSRÜSTUNG

<b>Bimini</b>	Bimini top: Sumbrella black ( titanium strutcure)
<b>Bugtreppe</b>	ja
<b>Gangway</b>	ja
<b>Anker</b>	Anchors & chain: Sanguineti custom
<b>Ankerkette</b>	ja
<b>Ankerwinde</b>	hydraulik Lewmar
<b>Beiboot</b>	3.6M Zodiac Tender complete
<b>Ausserborder</b>	15 Yamaha Outboard (2016)
<b>Rettungsinsel</b>	3x Zodiac 6 pax
<b>Rettungsinsel (Pers)</b>	6
<b>Schwimvesten</b>	12
<b>TV</b>	Sony 32'
<b>Surround Sound System</b>	SONOS (2016)

## RIGG

<b>Rig</b>	Rig: CarboLink Composite
<b>Marke Mast</b>	Masts: Southern Spars
<b>Material Mast</b>	Composite
<b>Salings</b>	Masts: Southern Spars Composite
<b>Großsegel</b>	Forte4 OneSails (2016)
<b>Genua</b>	Forte4 OneSails (2016)
<b>Genua I</b>	North Forte4 Sails (2015)
<b>Gennaker</b>	OneSails furling (2016)
<b>Trysegel</b>	ja
<b>Sturmfock</b>	ja



Primare Schot Winschen

4x Lewmar 111



# WALLY 94

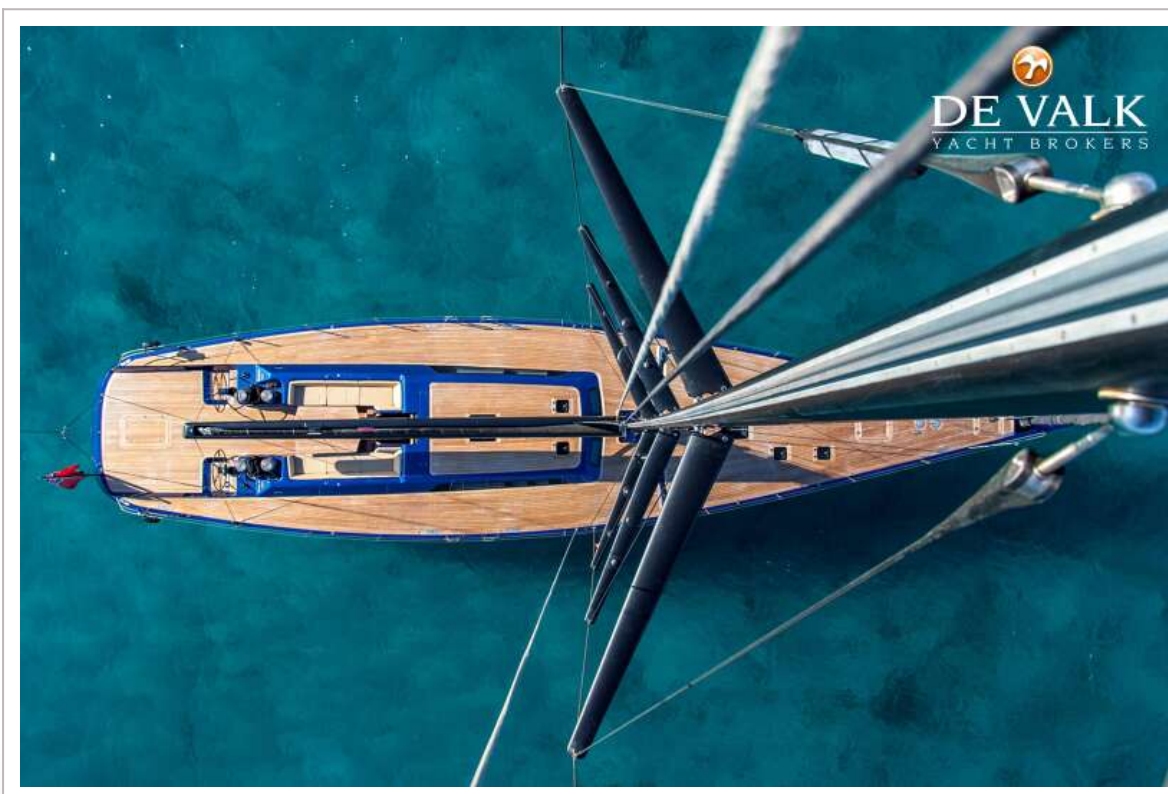


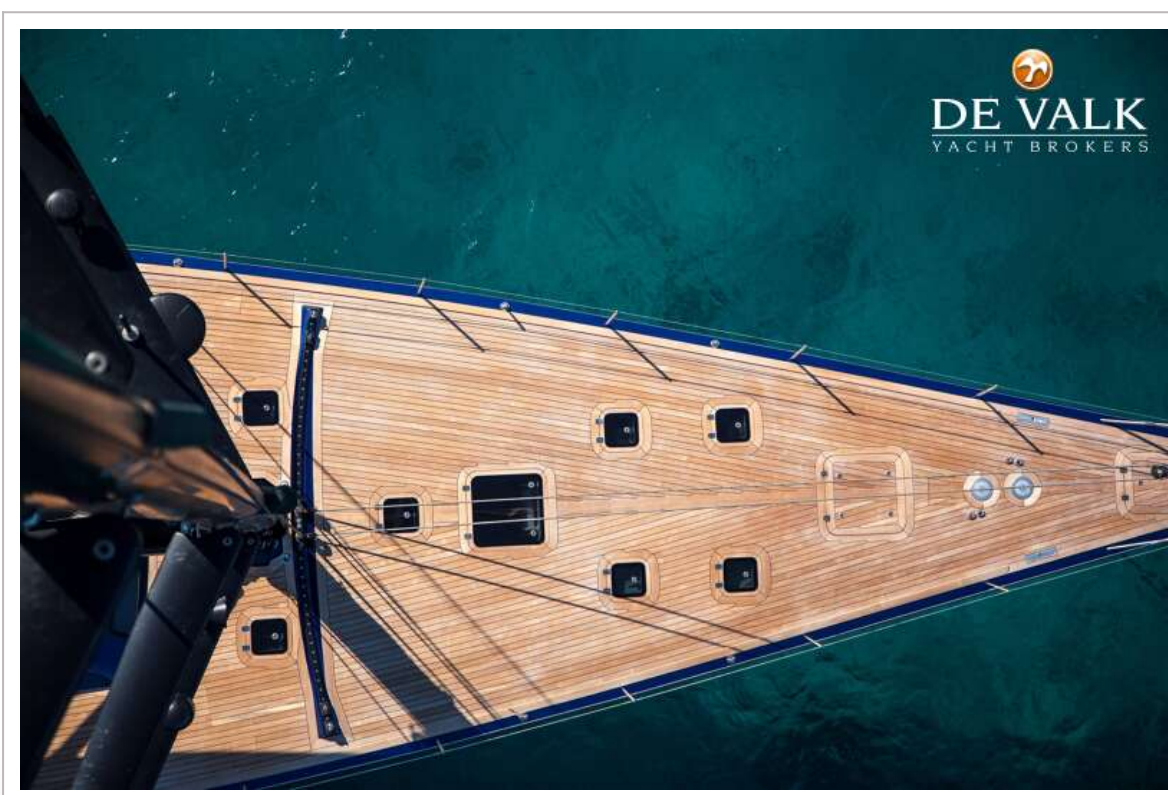


# WALLY 94

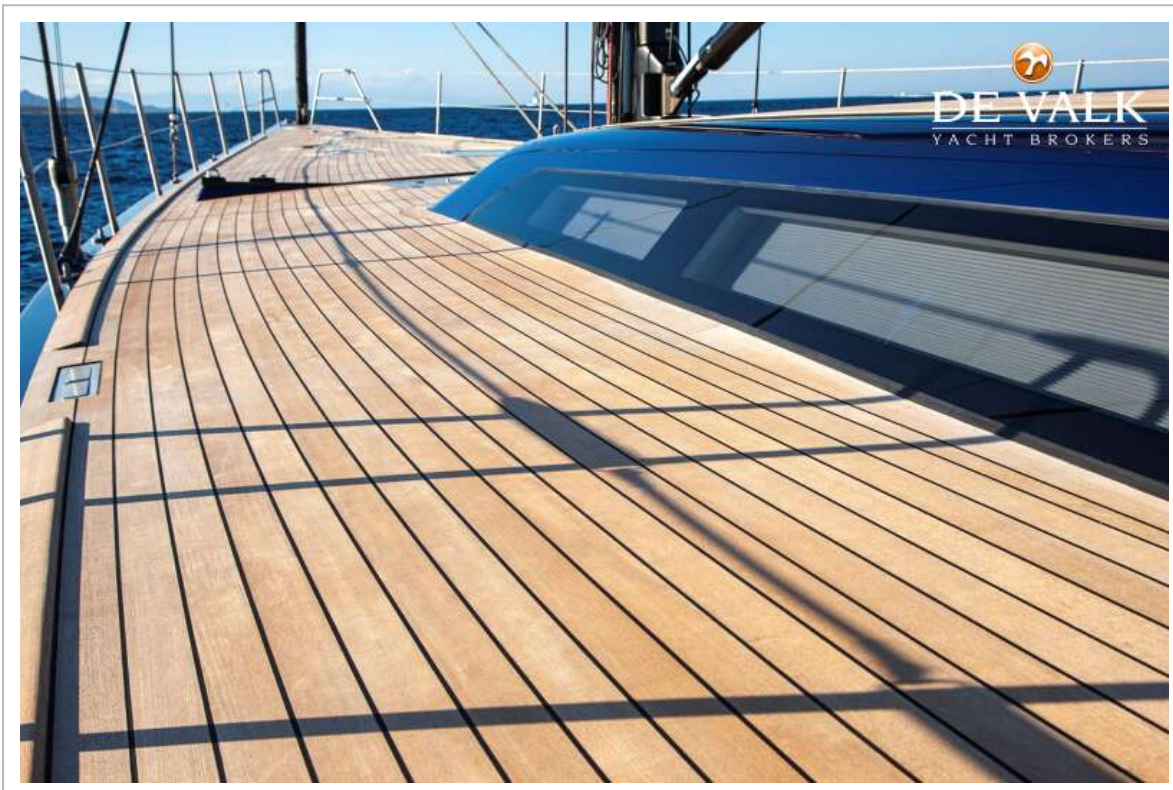


# WALLY 94

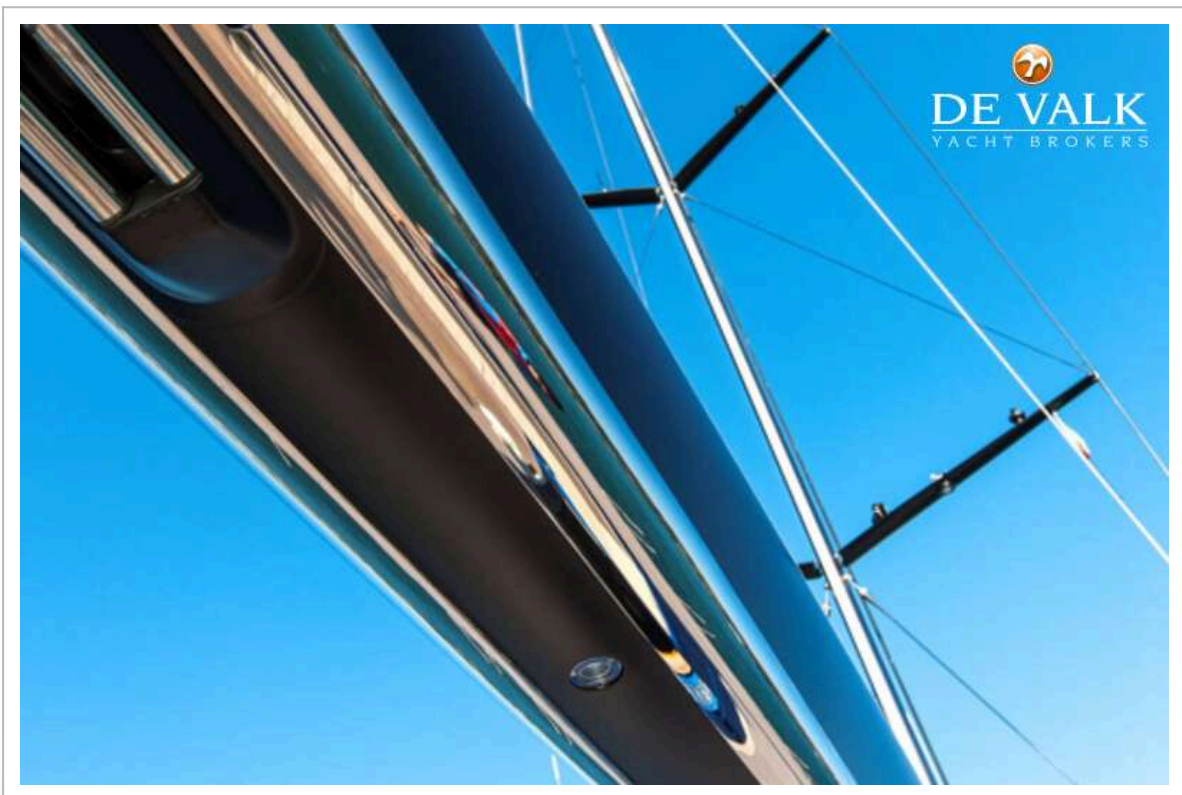




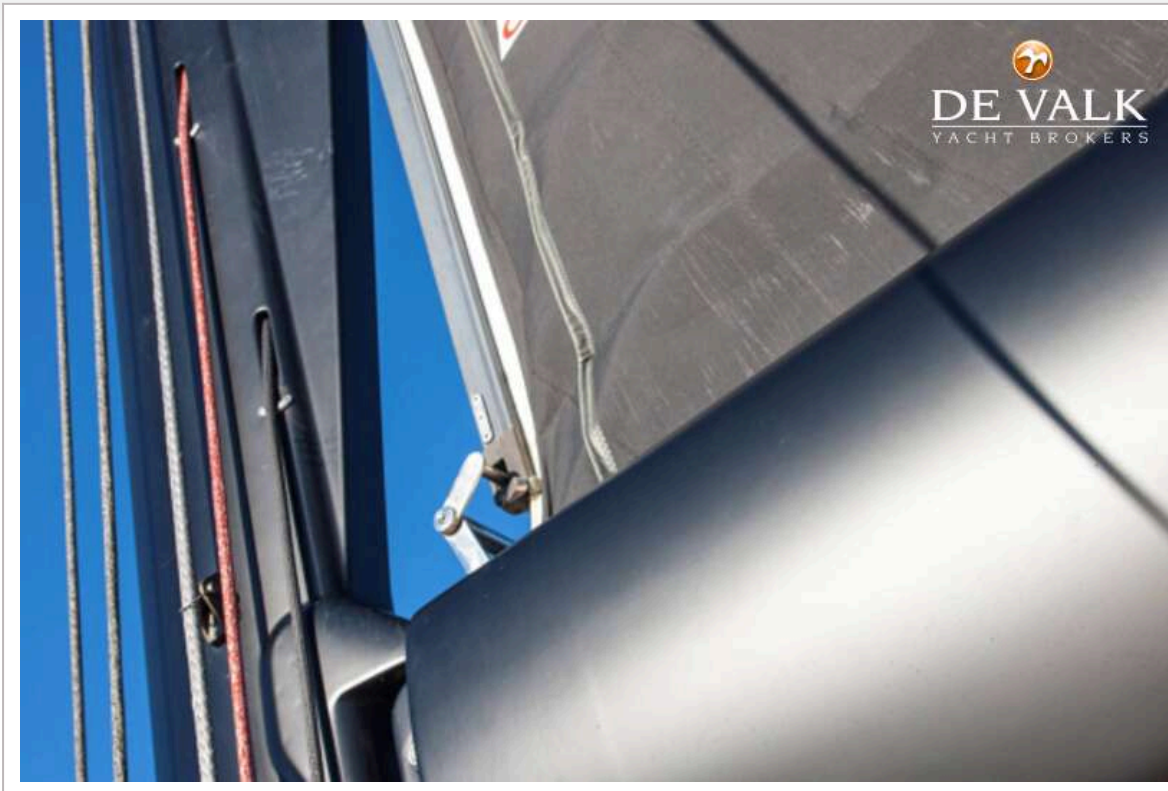
# WALLY 94



# WALLY 94



# WALLY 94



# WALLY 94



# WALLY 94

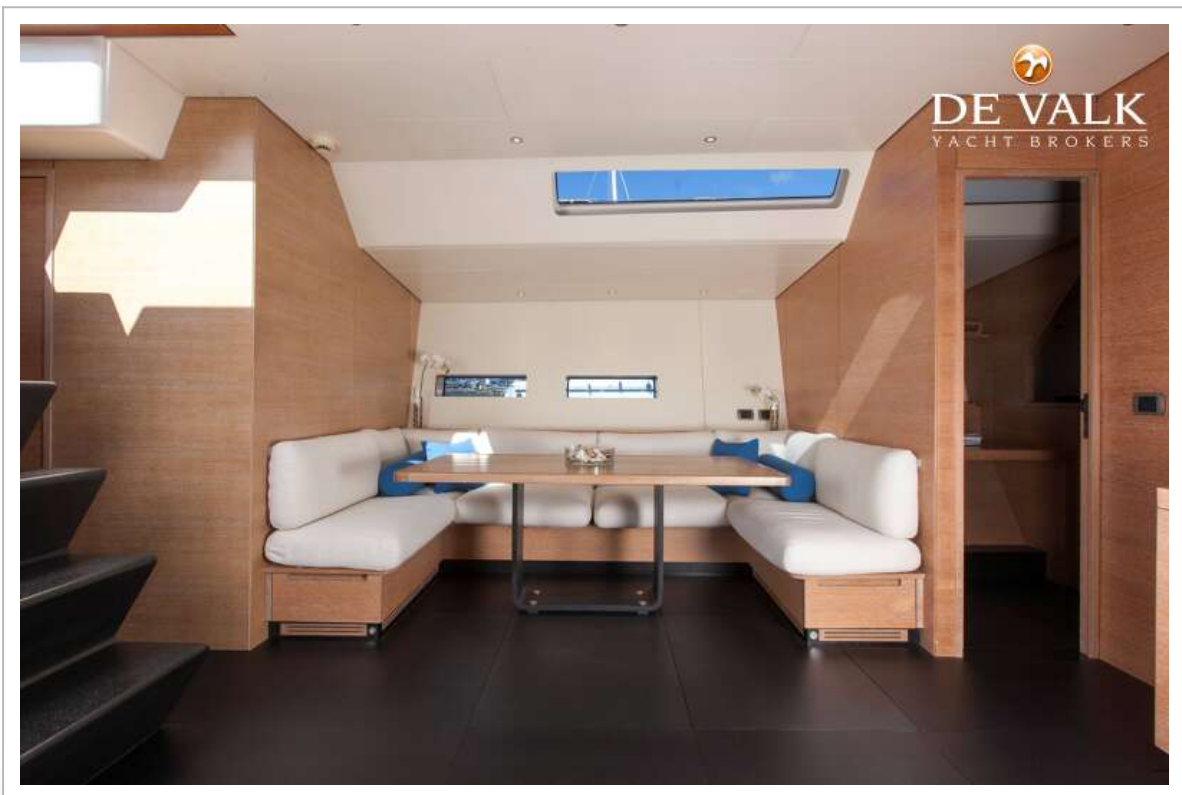
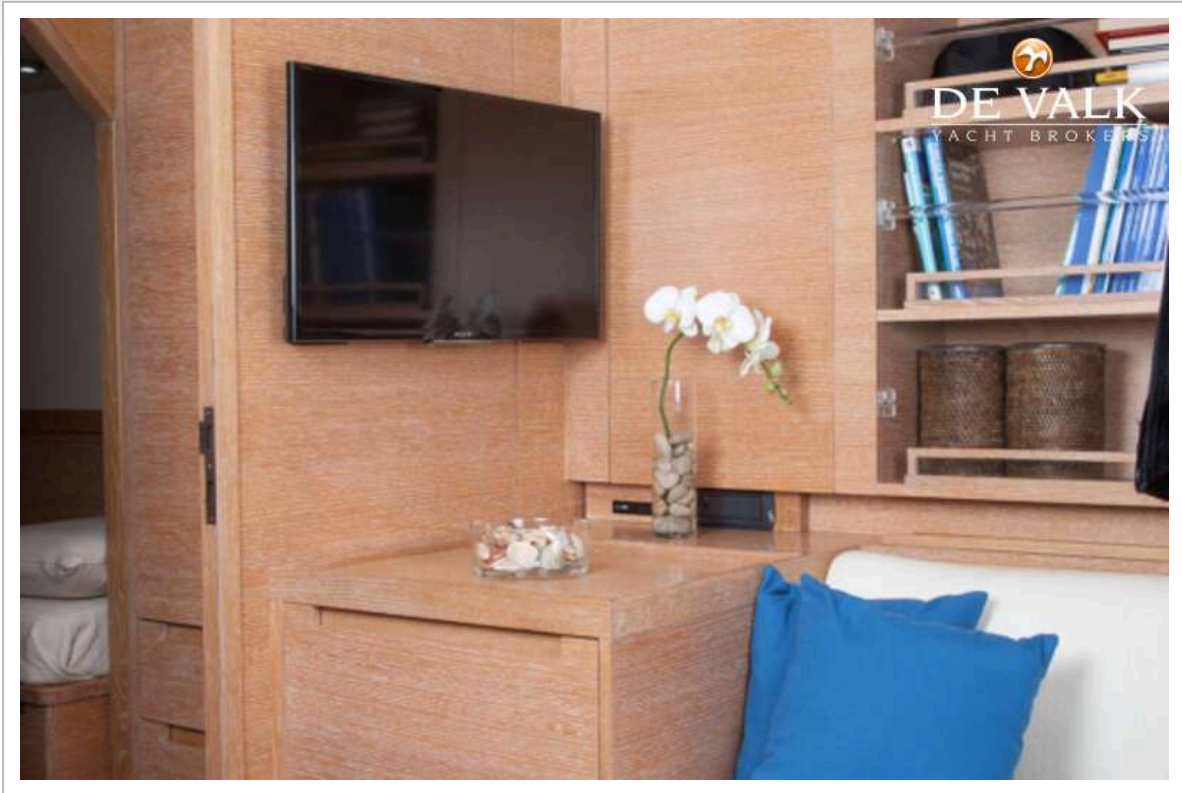




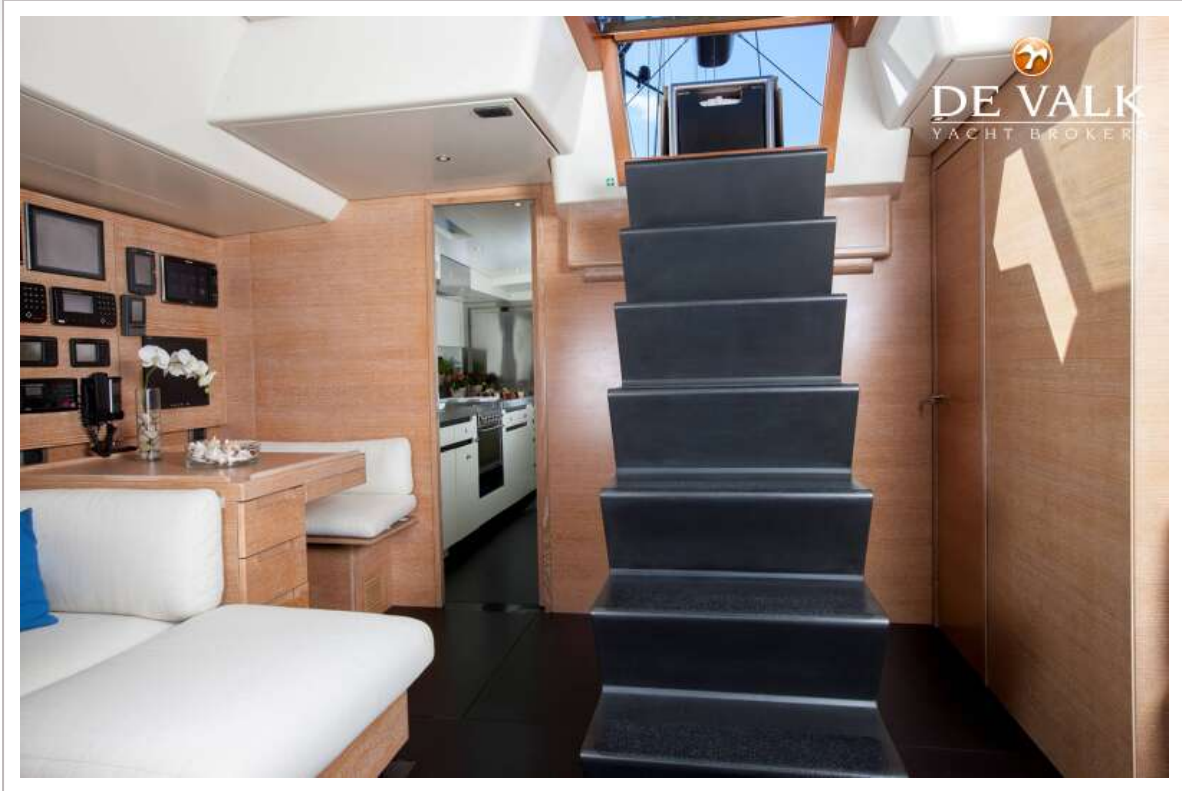
# WALLY 94

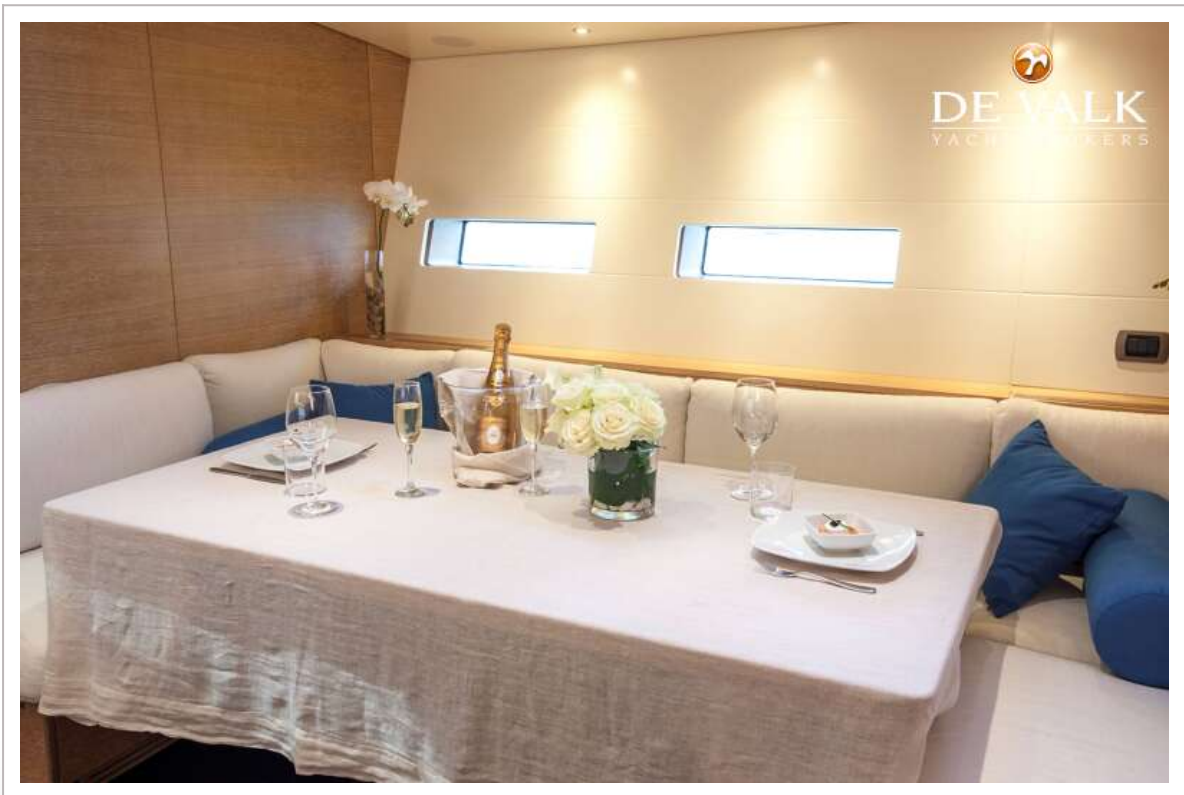


# WALLY 94

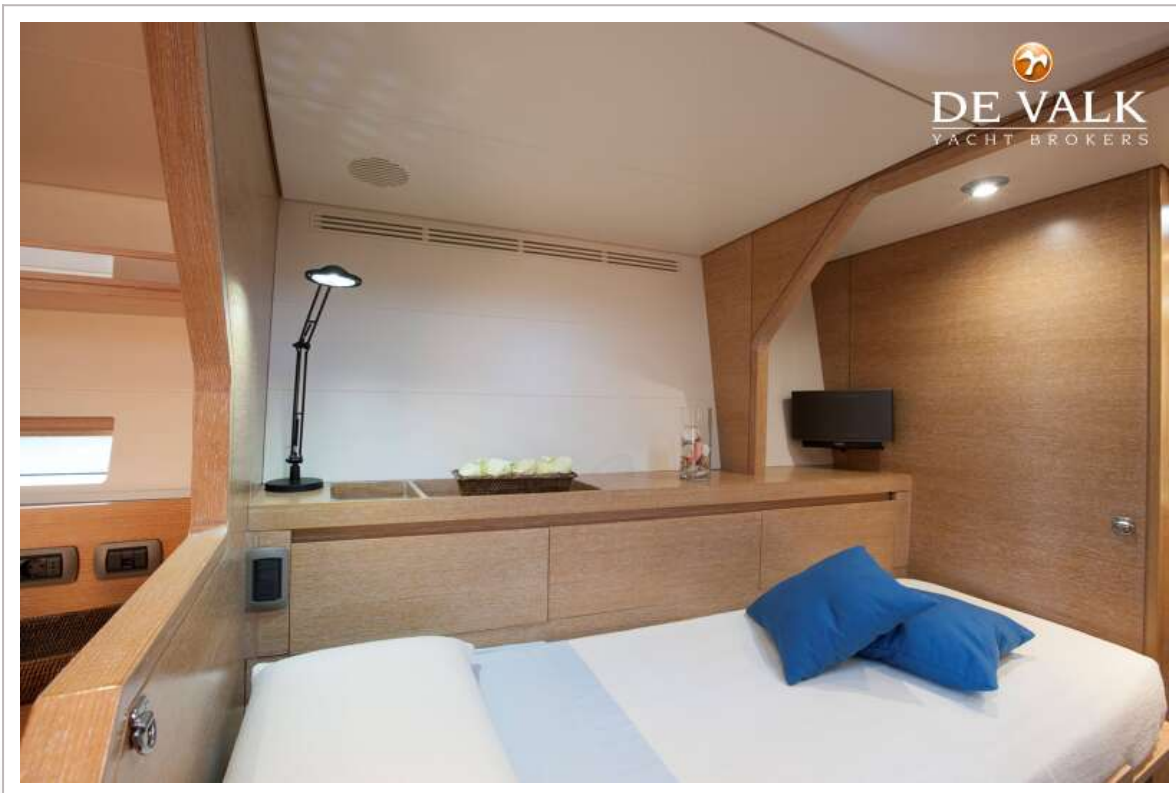


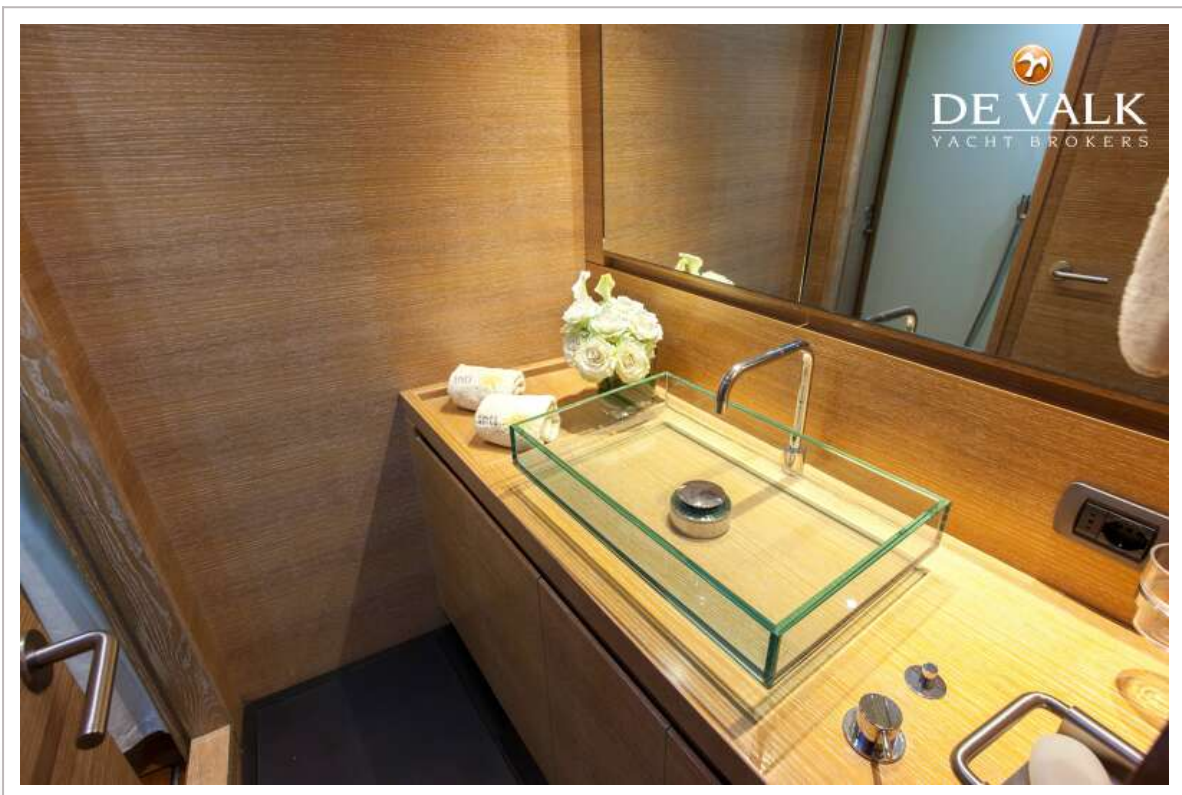
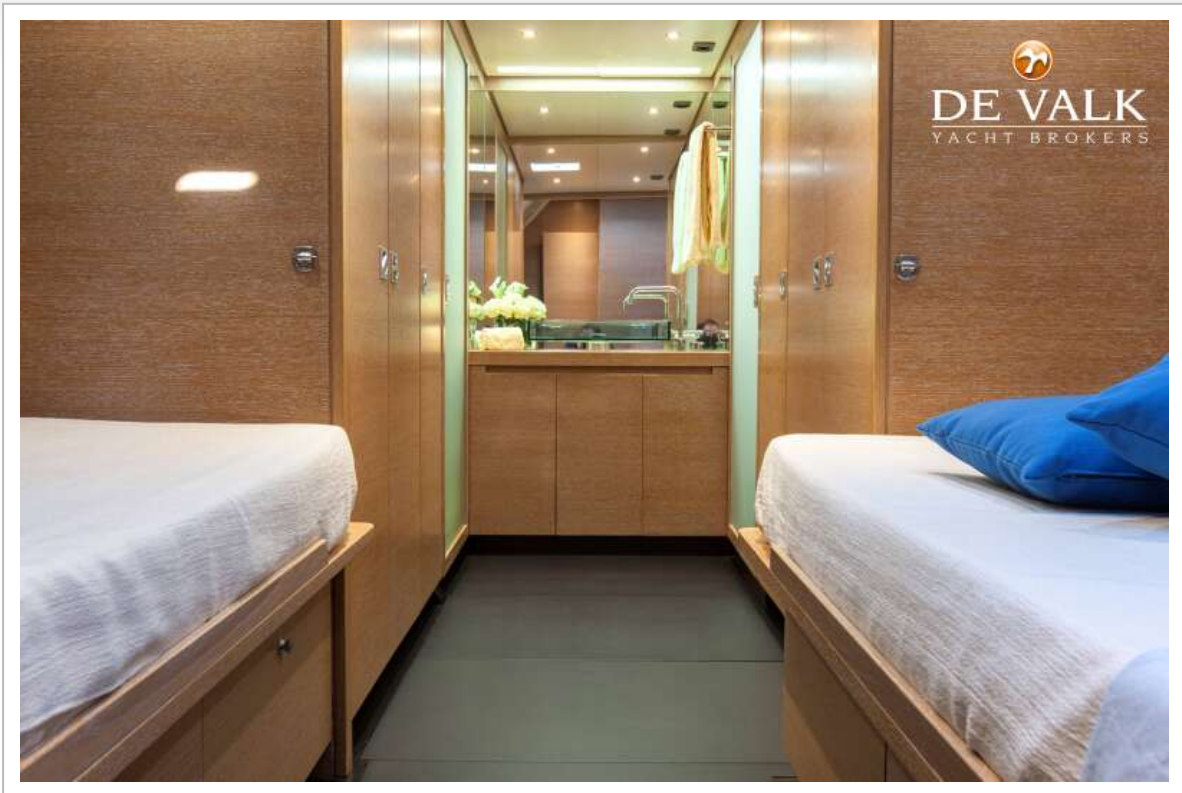
# WALLY 94

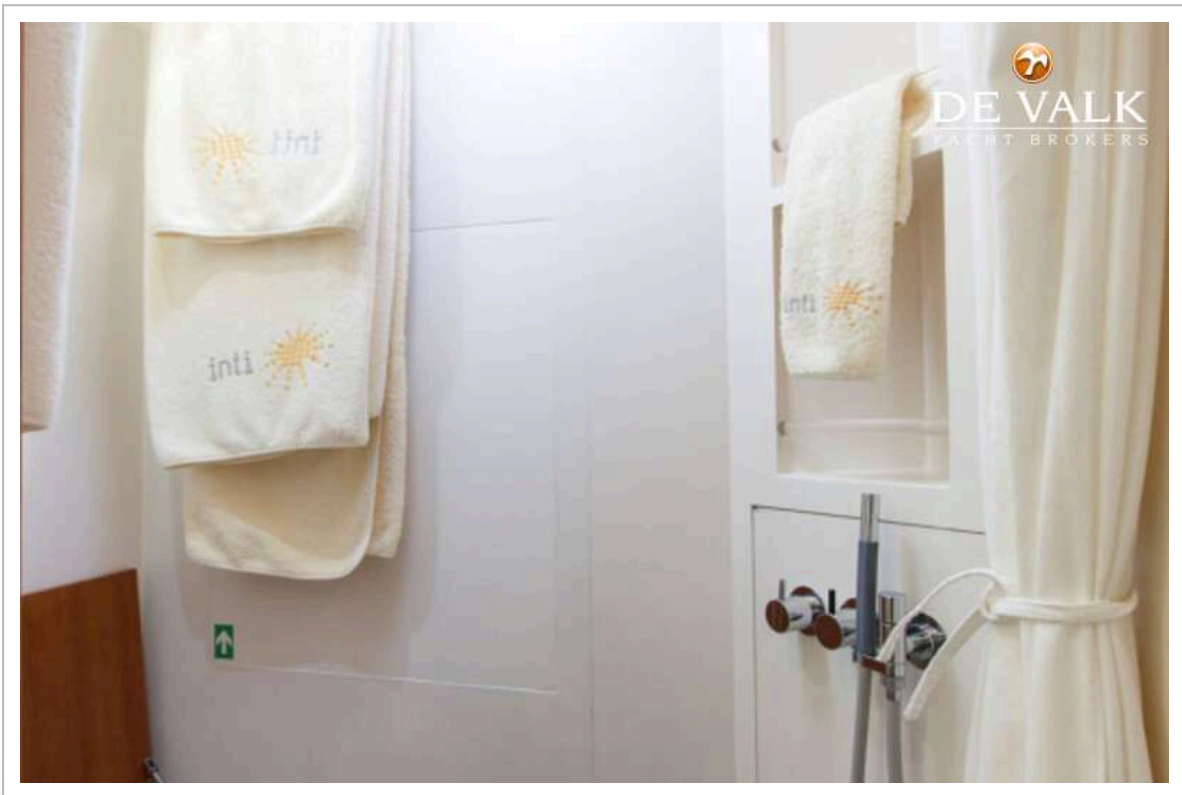
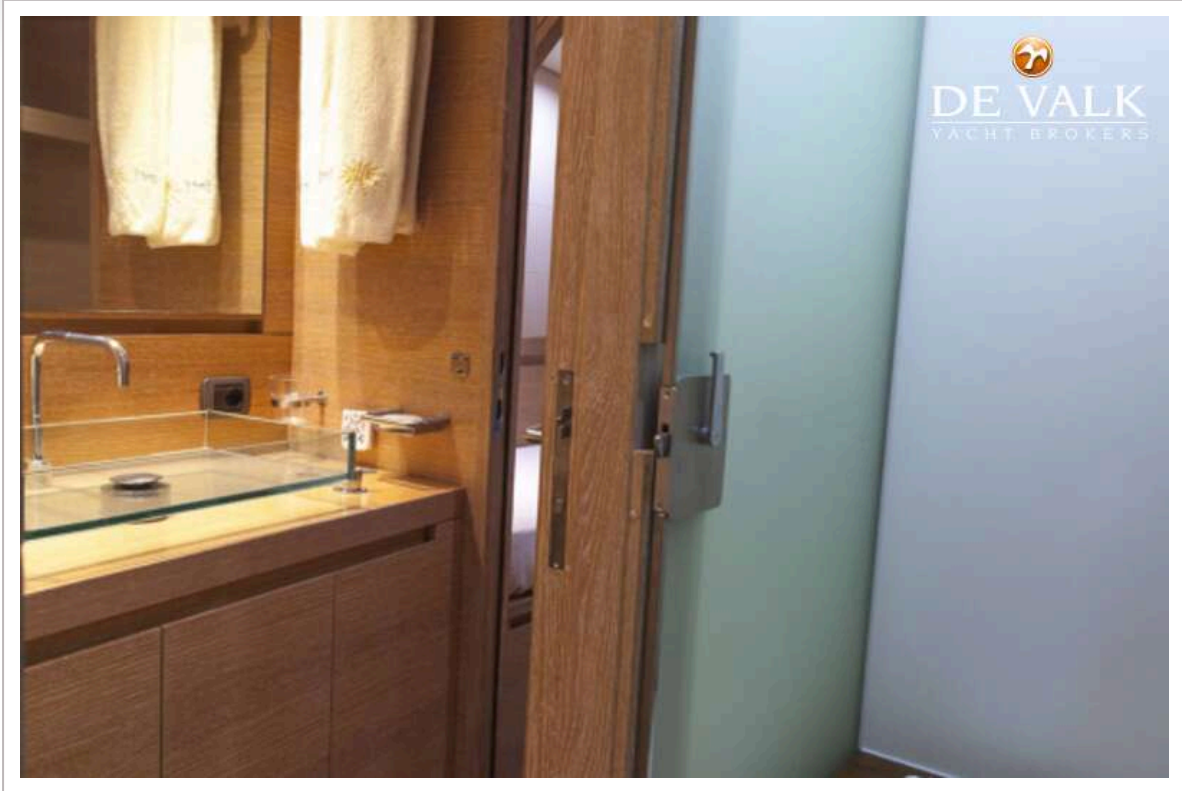




# WALLY 94







# WALLY 94

