



DE VALK
YACHT BROKERS



GULFSTAR 60 MKII



DE VALK
YACHT BROKERS

KOMMENTARE DES MAKLERS

The Gulfstar MKII is a fast, seaworthy yacht with hydraulic furling sails, electric winches, comfortable and spacious interior with 4 cabins & 3 heads. The engine, generator, Watermaker, Raymarine instruments & upholstery renewed in 2008. The complete rig, hydraulic furlers, sails, 220 V system, freshwater piping, Camara system, radar & sun awning over entire deck been renewed in 2014. Since 2023 the deck & superstructure were painted, windows & portholes overhauled & new compressors (fridge & freezer) installed. Contact De Valk Sint Annaland to make an appointment for a visit in Scheveningen.

Jan-Ward van Dantzig

TECHNISCHE DATEN

Maße	18.44 x 4.88 x 2 (m)	Werft	Gulfstar Yachts
Baujahr	1986	Kabinen	4
Material	GFK	Kojen	8
Motor(en)	1 x Yanmar 4LHA-HTP diesel	PS/kW	160 (PS), 117.76 (kW)
Verkaufspreis	€ 229.500 (MwSt. Bezahlt)	Liegeplatz	elsewhere / nicht im Verkaufsbüro

KONTAKT

Verkaufsbüro	De Valk Sint Annaland	Telefon	+31 166 601 000
Adresse	Koelhuisweg 4 4697 RM Sint Annaland The Netherlands	E-Mail	sintannaland@devalk.nl

HAFTUNGSAUSSCHLUSS

Diese Angaben erfolgen nach bestem Wissen, können jedoch nicht garantiert werden.



ALLGEMEIN

Modell	GULFSTAR 60 MKII
Typ	Segelyacht
Rumpflänge (m)	18,44
Wasserlinienlänge (m)	14,73
Breite (m)	4,88
Tiefgang (m)	2,00
Durchfahrtshöhe (m)	24,00
Stehhöhe (m)	2,00
Baujahr	1986
Werft	Gulfstar Yachts
Land	Vereinigte Staaten
Entwerfer	R. C. Lazzarra
Gewicht (t)	27,25
Ballast (Ton)	Blei 7,7
CE Norm	A
Rumpfmateriail	GFK
Rumpffarbe	Weiß Oyster White - painted in 2010
Rumpfform	S-Spant
Art Kiel	Langkieler
Material Aufbauten	GFK
Stossliste	Edelstahl Strip on a teak rubbing strake
Deckmaterial	GFK
Deck Finish	Antirutsch Farbe In 2023 painted in Perfection Oyster White
Deck Finish Aufbauten	Antirutsch Farbe In 2023 painted in Perfection Oyster White
Pflicht Bedeckung	synthetisches Teak Applied in 2014
Antifouling (Jahr)	2023
Dorado Belufter	Stainless steel
Fenster Einfassung	Edelstahl Dismounted & overhauled & rubbers renewed in 2023
Fenster Material	Perspex (Renewed in 2023) With rollo's (2014)
Decksluke	Vetus - with rollo's (2014)



Bullauge	Aluminium Dismounted & overhauled & rubbers renewed in 2023
Isolation	Balsa wood; deck, superstructure, hull till just under waterline
Radar Träger	nicht klappbar Stainless steel
Treibstofftank (Liter)	Edelstahl 1400
Füllstandsanzeige (Treibstofftank)	VDO
Trinkwassertank (Liter)	GFK 1500
Füllstandsanzeige (Trinkwasser)	VDO
Fäkaelien Tank (Liter)	Edelstahl 3 x
Fäkaelien Tankablauf	Deck Verbind. + Uw Linie 3 x
Radsteuerung	mechanisch Leather covered stainless steel steering wheel
Aussen Steuerung	ja
Not-Pinne	ja
Weitere Info Rumpf	Full length strings and floors stiffen the very solid hull
Weitere Info Farbe und Anstrich	In 2023 the deck and the superstructure have been treaded with 9 layers of epoxy primer, one layer of International 3 components primer Perfect Pro. Afterwards the deck, the superstructure and the cockpit have been painted twice in High Gloss Perfection Pro Artic White.
Weitere Info	All old layers of antifouling have been removed from the underwater hull in 2017 and then an epoxy system was applied (not due to osmosis).
Weitere Info	The Balsa wood sandwich construction of the deck and superstructure have an increased moisture content. This has been locally repaired, but still requires further attention.
Weitere Info	The deck space is terrific with outward deck mounted chainplates. 6 x Stainless steel mooring cleat and fairlead. Very large storage in the bow. The cockpit is modern with long seats easy to lie down on.

UNTERKUNFT

Kabinen	4
Kojen	8



Mannschaftskabine	Starboardside from companionway is walkthrough to captains cabin
Mannschaftscojen	1 x
Innen	Teak With white pannels
Fussboden	Teak und Holly
Salon	U-shaped dinette opposite a L-shaped settee with Off White leather upholstery (2010) .
Standhöhe Salon (m)	2,00
Heizung	Diesel Heißluft Planar (2022) with blowing points in aft cabin, saloon & galley
Klima Anlage	Klima mit Ruckzyklus 2 x Webasto, with openings in all cabins & saloon (no chiller)
Kartentisch	Starboardside from companionway - Headroom : 2,00 m
Achterkabine	Very spacious - Headroom : 2,00 m
Dinette	Teak
Tür zum Cockpit	ja
Kombüse	On portside along the walkthrough - Headroom : 1,80 - 2,05 m
Arbeitsfläche	Duropol Painted White Perfection Pro (2 compenents) in 2024
Spülbecken	Edelstahl 2 x
Herd	keramisch Aristron 2 burner - Half-Cardanic
Dunstabsauge	Dometic
Mikrowelle/Backofen Kombi	Bosch Innowave (2018)
Kuhlschrank	Top loader with a water cooled (pump renewed in 2024) Superfrigomat 5F compressor.
Gefrier Truhe	Top loader with a water cooled (pump renewed in 2024) Frigoboat compressor.
Warmwasser System	220V + Motor 60 L Boiler (2008)
Wasserdruck System	elektrisch Cempump water pressure pump & all water piping renewed in 2014
Eismaschine	Not functioning
Eignerkabine	Französisch Bett In aft cabin - Headroom : 2,00 m
Länge Bett (m)	2,00 x 1,50
Kleiderschrank	hängend/Schublad/Regale



Badezimmer	en suite Headroom : 1,90 m
Toilet	en suite In the bathroom
Toilette System	vakuum Electric
Handwaschbecken	im Badezimmer
Dusche	en suite Seperate cabin in the bathroom - Headroom : 2,00 m
Weitere Info	Mattresses renewed in 2018 with Lee-Cloths
Gästekabine 1	Stockbett In front on starboard side - Headroom : 2,00 m
Länge Bett (m)	2,00 x 0,85 & 2,00 x 0,80
Kleiderschrank	Regale und hängend
Badezimmer	gemeinsam In the bow - Headroom : 1,88 m
Toilette	gemeinsam In the bathroom
Toilette System	vakuum Electric
Handwaschbecken	im Badezimmer Stainless steel
Dusche	gemeinsam Seperate cabin in the bathroom - Headroom : 1,88 m
Weitere Info	Mattresses renewed in 2018, with Lee-Cloths
Gästekabine 2	Stockbett In front on port side - Headroom : 2,00 m
Länge Bett (m)	2,00 x 0,85 & 2,00 x 0,80
Kleiderschrank	Regale und hängend
Weitere Info	Mattresses renewed in 2018, with Lee-Cloths
Mannschaftskabine(n)	1 x Crew (Captain - 1 peron) Cabin - Amidships on Starboard Side - Bed : 2,00 x 0,80 m - Headroom : 1,95 m.
Badezimmer (Mannschaft)	Between galley and crew cabin - Headroom : 1,95 m
Toilette (Mannschaft)	In the bathroom
Toilette System	vakuum Electric
Handwaschbecken	im Badezimmer
Dusche (Mannschaft)	In the bathroom (with curtain) - Headroom : 1,95 m
Weitere Info	Mattress renewed in 2018, with a Lee-Cloth underneath
Waschmaschine/Trockner Kombi	Zanussi TurboDry 1000 (HydroSystem - Xtra Capacity)
Weitere Info	During the refit in 2014 the following has been done : Isolation, leather on the ceiling plates and all lighting fixtures renewed. Ber Ozono water filter system installed in 2008.



Weitere Info

The superstructure has been painted in white epoxy on the inside (2023). 3 x Reading light in the saloon.

MASCHINEN

Motoranzahl	1
Marke	Yanmar
Typ	4LHA-HTP
PS	160
kW	117.76
Kraftstoffart	Diesel
Installiert im Jahr	2008
Höchstgeschwindigkeit (Kn)	9
Marschgeschwindigkeit (Kn)	8
Verbrauch (l/h)	5,5
Motorstunden	2030
Kühlungssystem Motor	indirekte Wärmetauscher
Antrieb	Schraubenwelle
Welle Dichtung	ja
Motor bedienung	elektrisch (2008)
Gewende getriebe	hydraulic (2008)
Bugschraube	elektrisch Vetus
Exhaust	wassergekühlt (2008)
Wellen Drucklager	Aquadrive (2008)
Propeller Typ	falt Gori (2008)
Propellerblätter	3
Material Propellerwelle	Edelstahl
Propellerwelle schmierung	Wasser (2022)
Hand Bilgenpumpe	(2008)
Elektrische Bilgenpumpe	Blau Naval Marine Pump (2008) max 6,6m3/hour
Bilge Alarm	(2008)
Elektrische Anlage	12 & 24 & 110 & 220 Volt (entire 220V system renewed in 2014)



GULFSTAR 60 MKII

Generator	Nassauspuff Vetus (2008)
Betriebsstunden Generator	340
Starterbatterie	1 x AGM Deep Cycle (2022)
Versorgungsbatterie	4 x 200 Ah Gel battery (2010) & 4 x 200 Ah AGM (2024)
Navigationsbatterie	ja
Bugschraubebatterie	2 x 200 Ah AGM Deep Cycle (2023)
Batterie Monitor	Victron BMV 501 Battery Monitor
Batterie Ladegerat	1 x Victron Centaur 200 A & & 1 x Vetus 80 A (engine battery) & 1 x Victron (bowtruster batteries) & 1 x Victron Skylla TG 24V 50 A.
Umwandler	1 x Victron Phoenix 3.000 W
Solar panele	800 Watt Burger Meyer (double reflection - 2023) with Victron Solar MPTT 100/50 (2023).
Dioden-Batterie-Koppler	(2008)
Landstrom	mit Kabel Electric rolling up
Wasserbereiter	Aqua Whisper Sea Recovery System 250L/H (2008). To be serviced
Weitere Info	The engine room access is through the portside walkthrough. She has the nice little Gulfstar door with a circular porthole. Inside their is plenty of room for sitting down and crawling around.
Weitere Info	The engine has been serviced annually and had a large service in 2022. Propeller shaft bearing renewed in 2022. Separ fuel filter with water seperator. Racor fuel filters. In 2008 the engineroom was completely empied and everything was renewed & new installed, including new sound isolation.
Weitere Info	WaterCounter Water Management System WC1 (2011).

NAVIGATION

Kompass	Whitlock
Elektrisches Kompass	Furuno THD Satellite Compass SC-50 (3 Boxes - 2009)
Multi Control Display	Raymarine ST60+ Graphic (2009)
Tiefenanziege/Logge	Raymarine ST60+ Tridata (2009)
Windlupe anzeige	Raymarine ST60+ WInd (2009)



Tochter anzeige	Raymarine ST60+ (2009)
UKW	1x Raymarine (2009), 1x Skanti 1000 P DSC (2009), 1x Sailor C4951WP (2009).
Portabel UKW	1 x Simrad TC 50 GMDSS (2008)
Autopilot	Raymarine ST6002 (2009) & 2nd display at chart table
Ruderwinkel Anzeige	Raymarine ST60+ Rudder (2009)
Radar	Furuno Navnet Radar Antenna mounted on mast (2014) and 1x Furuno Marine Radar 1715 on a half cardanic bracket on the arch on the stern
GPS	Furuno GPS Navigator (2009) & Raymarine (2009)
Navtex	JRC NCR-333 Navtex Receiver
PC Computer	Emergency computer for emergency power
PC Anschluss	ja
WIFI Antenne	D-Link
Elektronische Kart(en)	2014
AIS Transceiver	Furuno Universal AIS FA-150
Radio Empfänger	JRC NCT-196N DSC NBDP Modem (2009)
Sender Vorrichtung	JRC JSB-196 GM Radiotelephone (2009)
Epirb	MacMurdo Smartfind E5/G5 - 406 Mhz - Class 2
"MUB" Sender	2 x & 1 x MacMurdo S4 Rescue Sart Transponder (need new battery)
Kamera	Axis P12 Network Camera Series (2014) : On the bow, on the stern, 2 x in the mast on spreader (with very good zoom), in the saloon/chart table, at the bow thruster, in the engine room, under water at the propeller & propellershaft and at the propellershaft (inside). At this moment, the camara's are not in use and all cable-ends are disconnected from the computer unit of the camara system.
Navigation Beleuchtung	LED
Suchscheinwerfer	On the arch on the stern
Sprech-vorrichtung	Sailor SC4150 Iridium & Standard Horizon Loud Hailer VLH-3000
Weitere Info	Tsunamis Navigator & Dell Screen at navigation table
Weitere Info	Sextant



AUSRÜSTUNG

Spritzverdek	Blue
Kuchenbude	Blue
Bimini	Cockpit cover can be used as a bimini (panels around removed)
Sonnenschirm	Over the complete boat (2014, as new, only used a few times)
Cockpit Polster	Blue with a extra & new spare set of covers
Cockpit Tisch	Teak (foldable and mounted on front of pedestal)
Badeleiter	Edelstahl With teak - Hanging on port side
Gangway	Hydraulic Besenzoni (in GRP with 2 stentions)
Heckdusche	On the aft deck
Anker	Bruce 30 Kg
Ankerkette	120 m 12 mm (2014)
Ankerwinde	elektrisch Controlled on the bow and in the cockpit
Gangspill	On the windlass
Deckwasche	2 x (functioning unknown)
Ausserborder Halterung	ja
Davits	Edelstahl Foldable bracket
Davits bedienung	handbetrieb
Deck Kran	handbetrieben On the stern
See Reling	Draht/Seil Double wired
Zupackenschiene (aufbauten)	Teak
Seiten-Einstieg Seereling	On both sides
Heckkorb	Stainless steel
Bugkorb	Stainless steel
Schwimvesten	2 x
Sicherheits Rustung	2 x
Rettungsboje	2 x Orange round buoy
Sicherheitsleine auf Deck	(2022, but never used - new)
Leinenschneider	(2021)
Horn	Luftdruck 2 x
Radar Reflektor	(2014)



Fenderkissen	ja
Festmacher	ja
Reserve Teilen	ja
TV	Samsung Smart TV (2016)
TracVision ball	TracVision
Radio-CD Spieler	1 x JVC & 1 x Alpine
Surround Sound System	(2022)
Subwoofer	(2022)
Lautsprecher im Pflicht	(2008)
Lautsprecher im Salon	Pioneer (2008)
Lautsprecher im Kabin	2 x Pioneer in every cabin
Uhr - Barometer	In every cabin is a clock
Feuerloscher	ja
Letzte Wartung Feuerloscher	Need to be checked / renewed
Feuerloscher in Maschine Raum	Need to be checked / renewed
Weitere Info	LED underwater lighting (New in 2023)
Weitere Info	Blue LED lighting behind the name on the transom
Weitere Info	Stainless steel Magma BBQ (with all accessories) on aft port side pulpit.

RIGG

Rig	Sloop-Kutter
Stehendes Gut	Dyform (2014)
Marke Mast	Formula Masts (2014)
Material Mast	Aluminium behandelt Coated Cloud White Alexseal (2014)
Salings	2 x Set - White coated (2014)
Durchgehende Mast	ja
Großsegel	Climent Furling Laminated Furling Mainsail (2014 - adequate)
Rollgroß Anlage	Hydraulic (2014)
Kutter Stag	Removable, with a tentioner (2014)
Fock	1 x Climent Cutter Jib (2014-unused) & 1 x Citter Jib (old)



Genoa	Climent Furling Laminated Genoa (moderate condition)
Rollreiffanlage	Harken - Hydraulic (2014)
Gennaker	Climent (2014) with loose Facnor Furler (2014 - never used, new)
Reff Vorrichtung	Rollgross im Mast Hydraulic (2014)
Baumniederhohler	hydraulik Navtec (2014)
Primare Schot Winschen	1 x Bariant 27 ST (mainsail sheet)
Sekundaire Schot Winschen	2 x Bariant 28 ST
Genoa Schotwischen	2 x Bariant 36 ST electric
Fall Winschen	2 x Bariant 25
Spi-Baum	Kohlenstoff Cloud White Alexseal coated (2014), the end head is missing
Weitere Info	After renewing of rigging (2014), yacht wasn't used till 2022



GULFSTAR 60 MKII



GULFSTAR 60 MKII



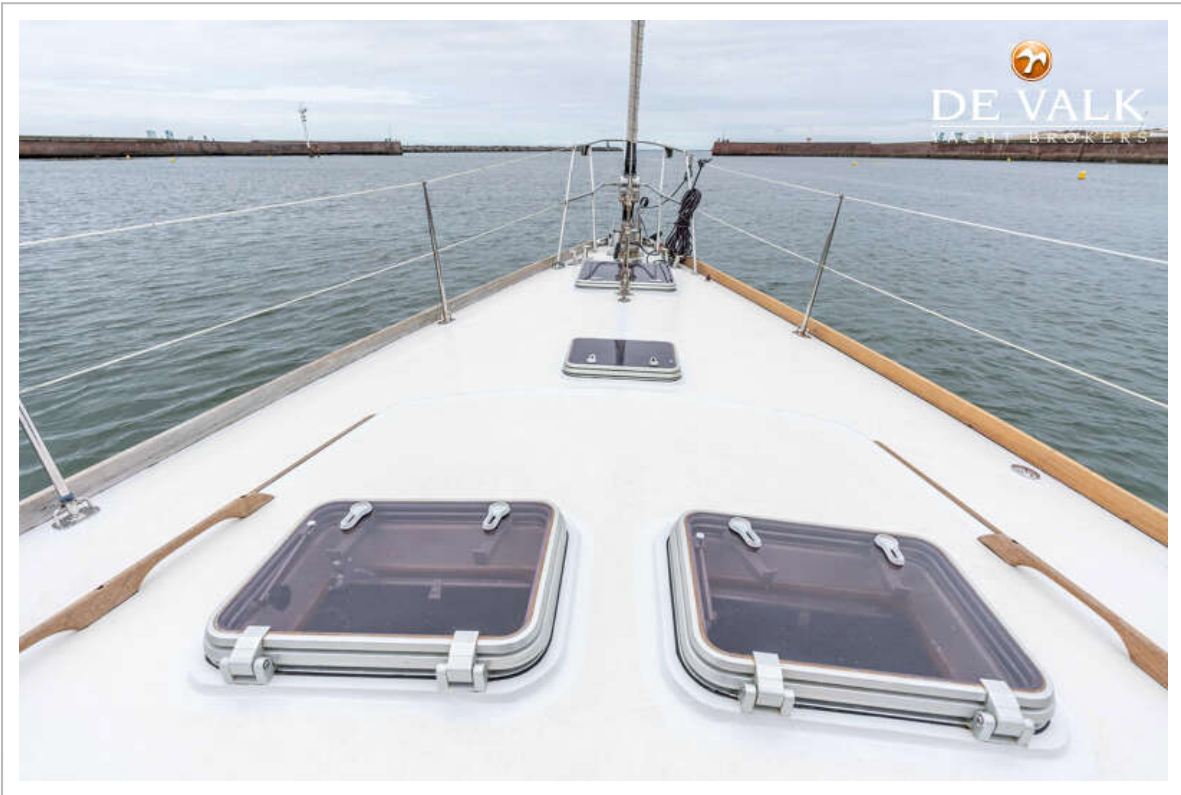
GULFSTAR 60 MKII



GULFSTAR 60 MKII



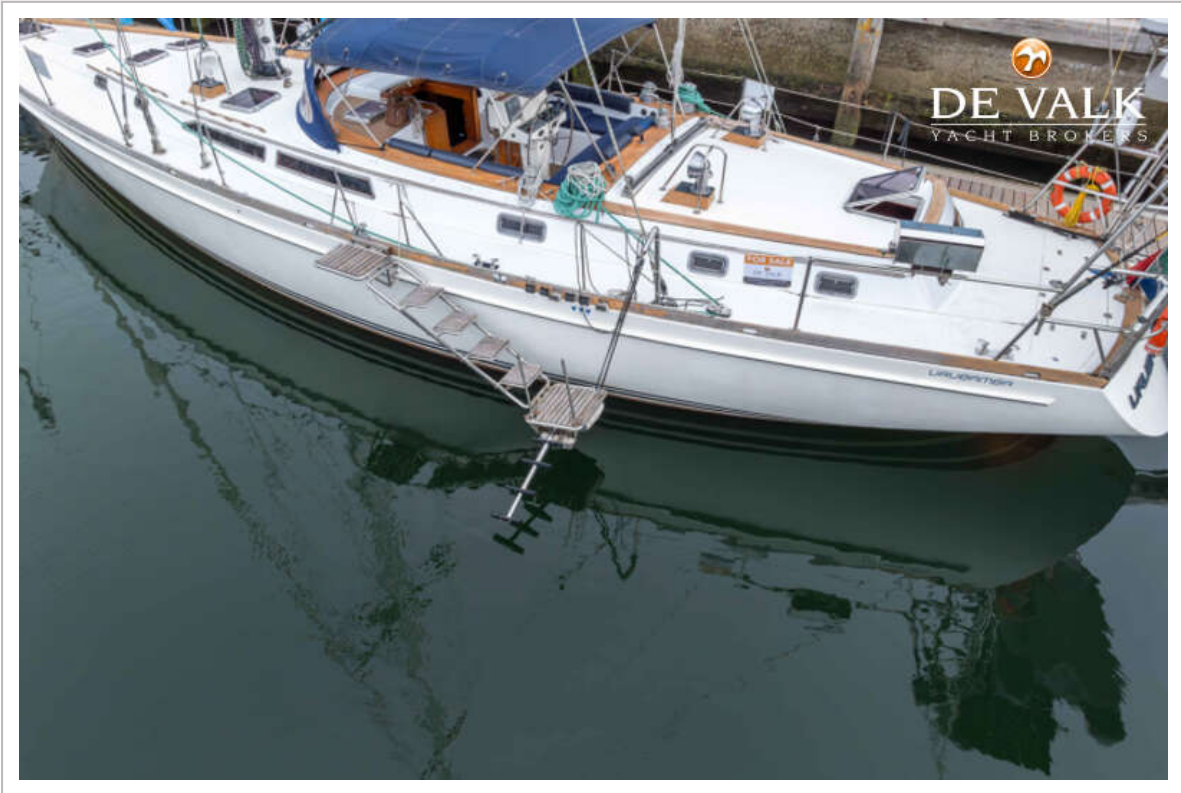
GULFSTAR 60 MKII



GULFSTAR 60 MKII



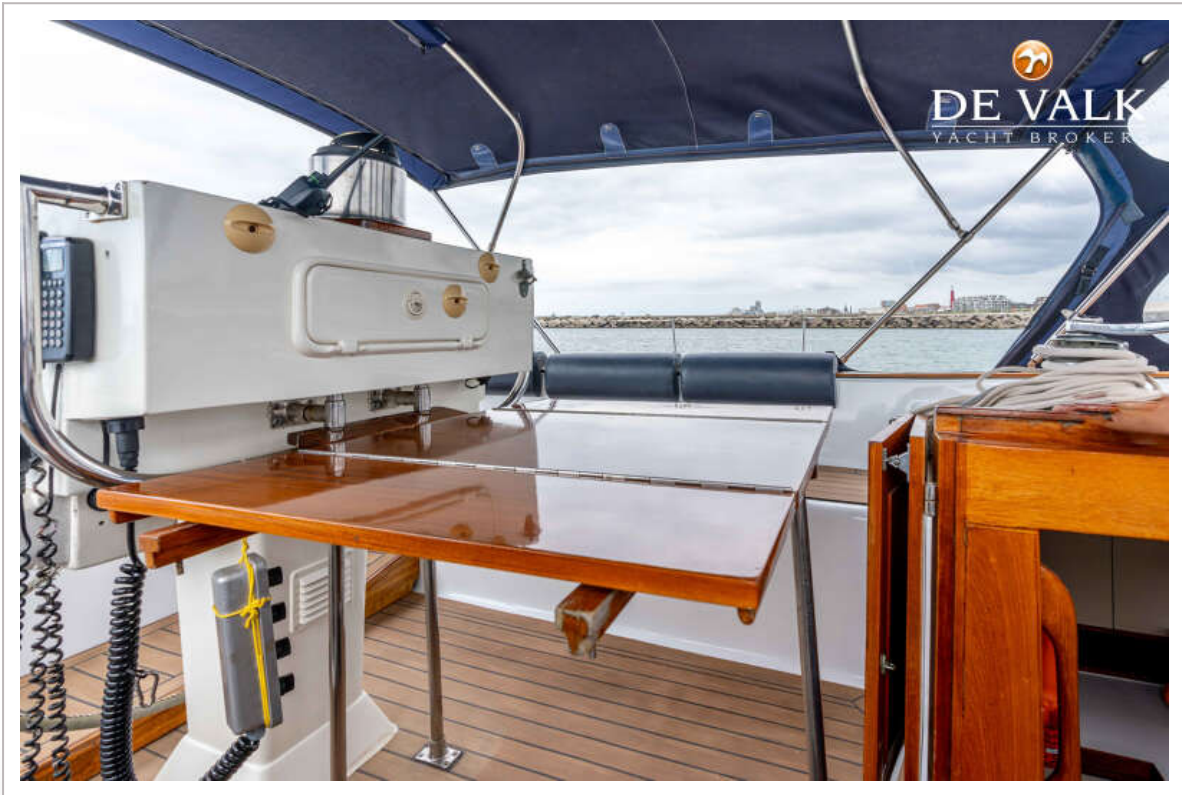
GULFSTAR 60 MKII



GULFSTAR 60 MKII



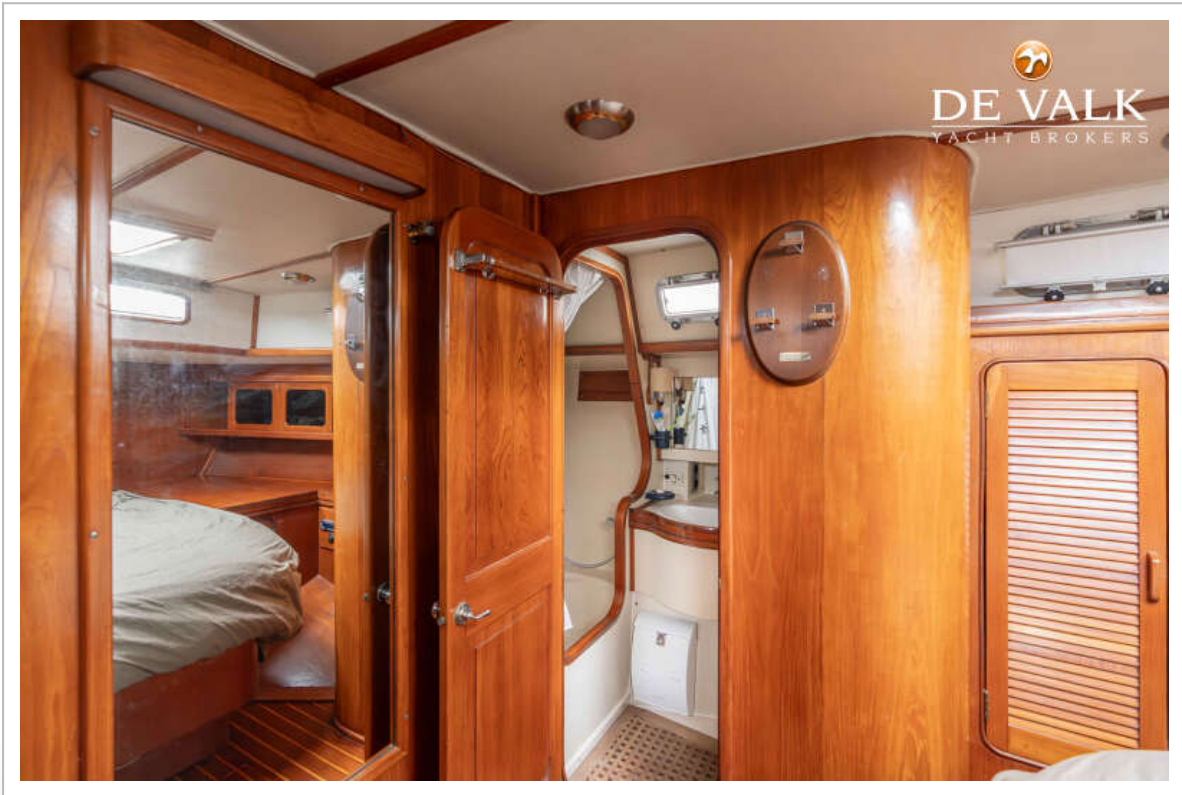
GULFSTAR 60 MKII



GULFSTAR 60 MKII



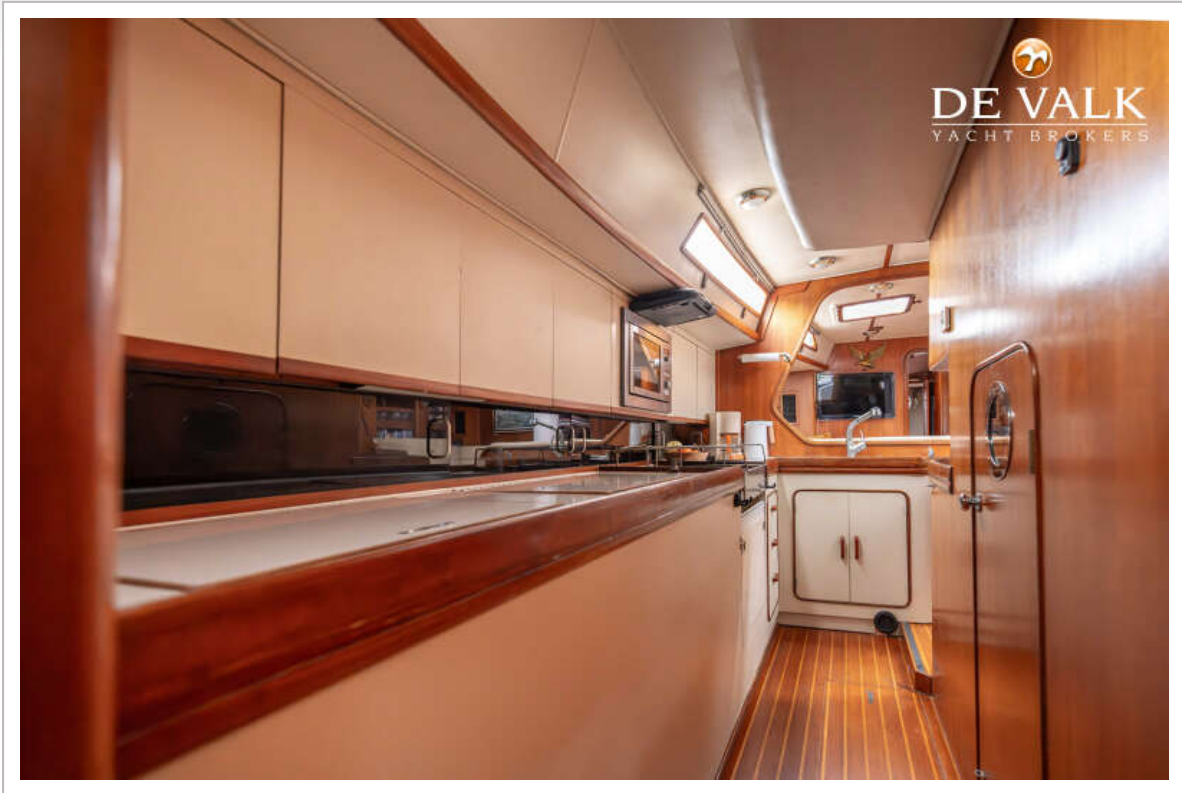
GULFSTAR 60 MKII



GULFSTAR 60 MKII



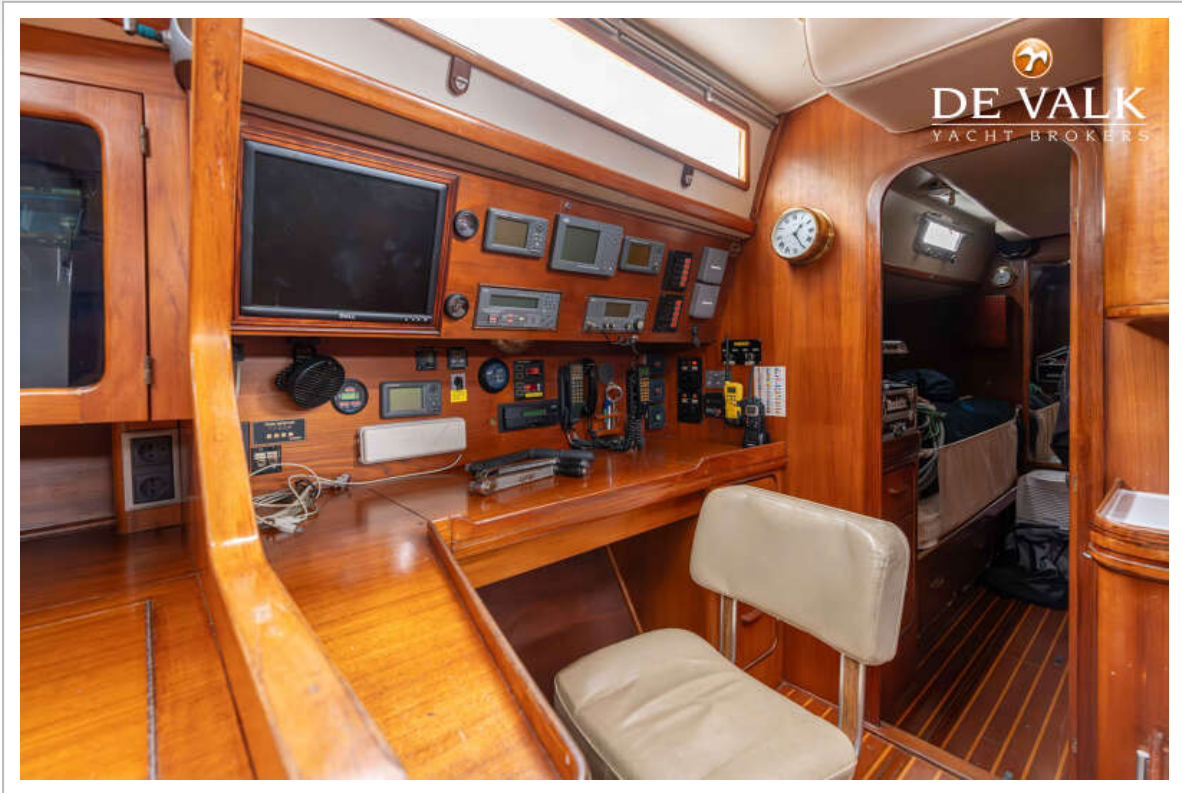
GULFSTAR 60 MKII



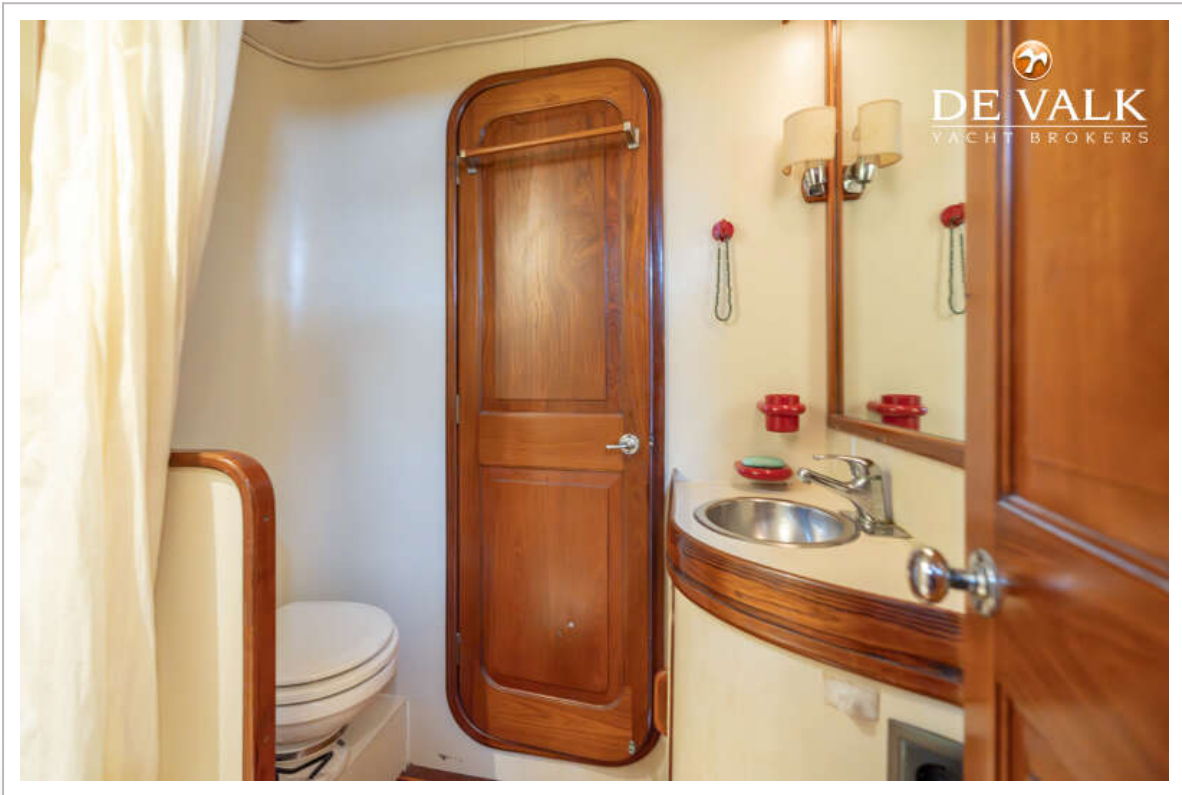
GULFSTAR 60 MKII



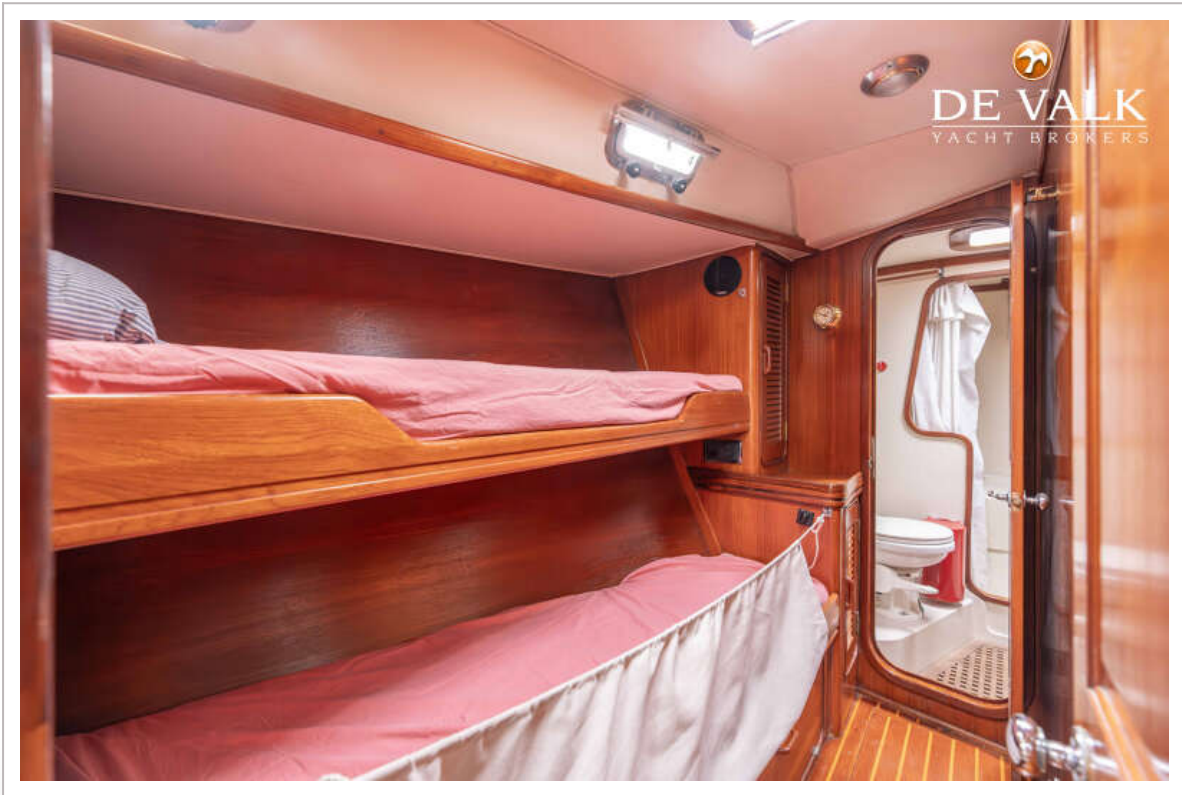
GULFSTAR 60 MKII



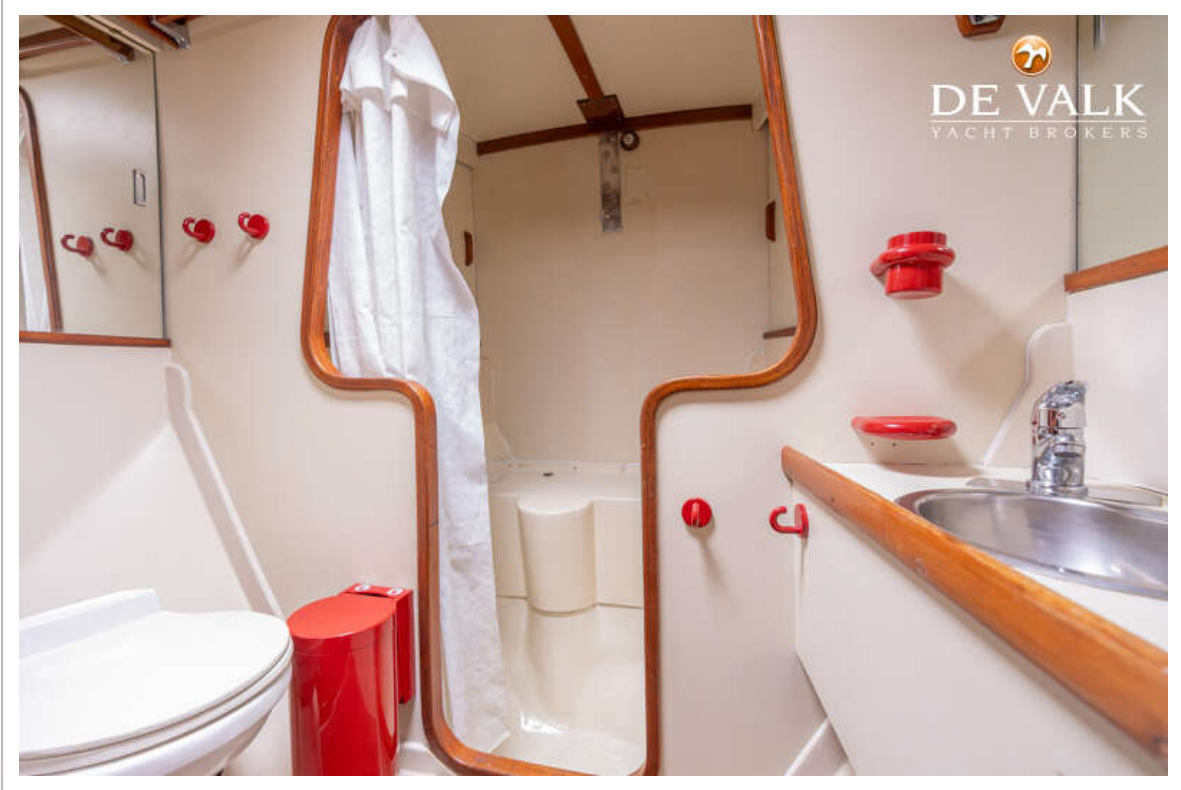
GULFSTAR 60 MKII



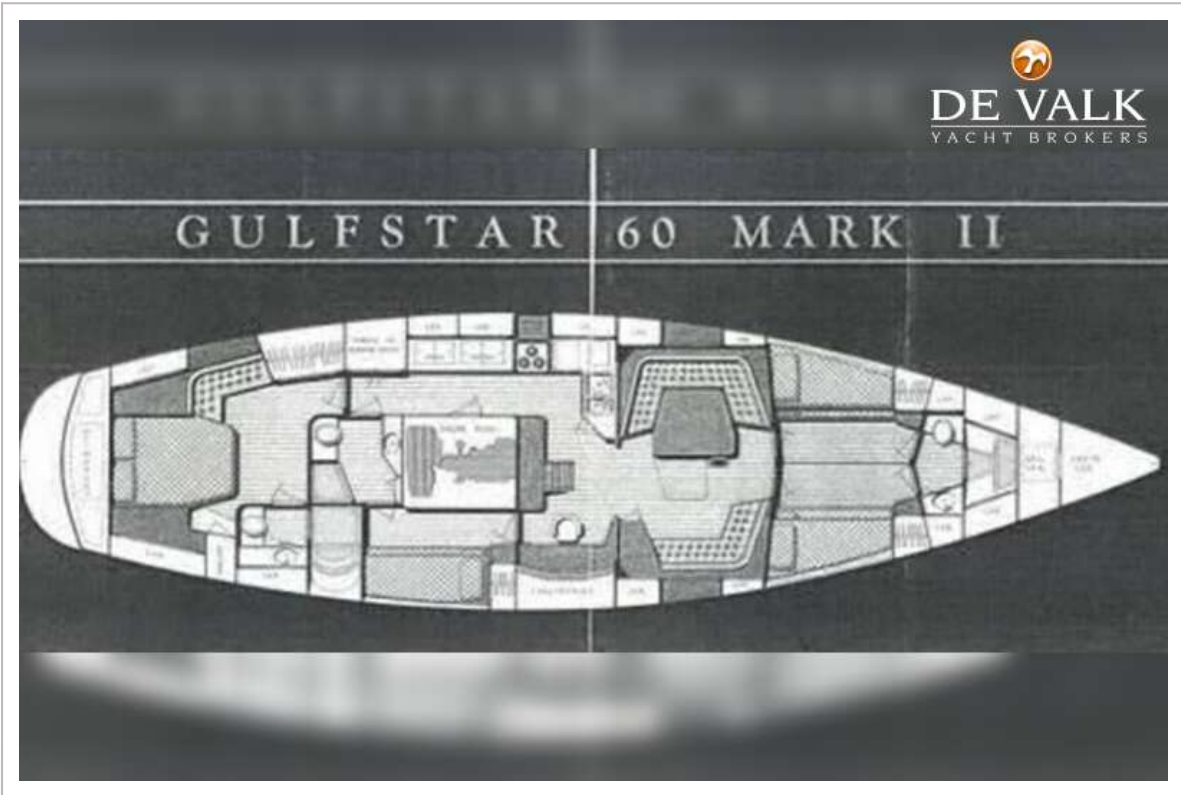
GULFSTAR 60 MKII



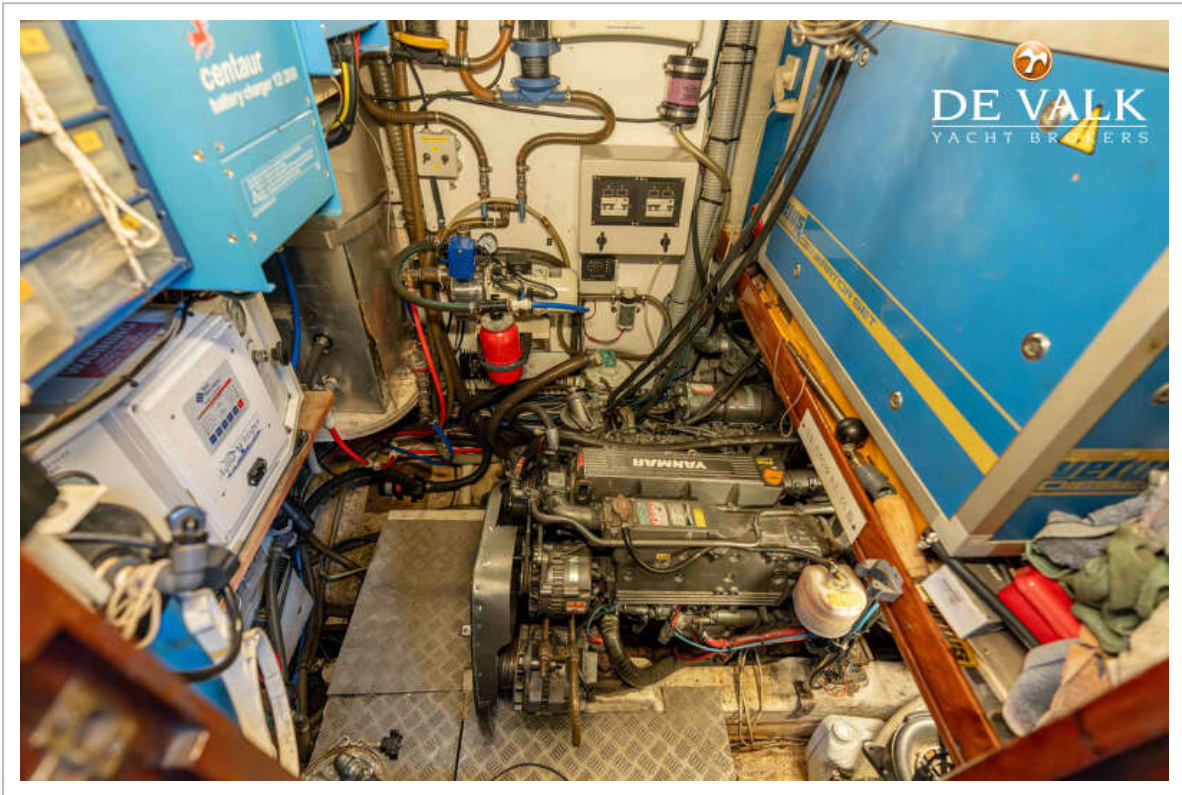
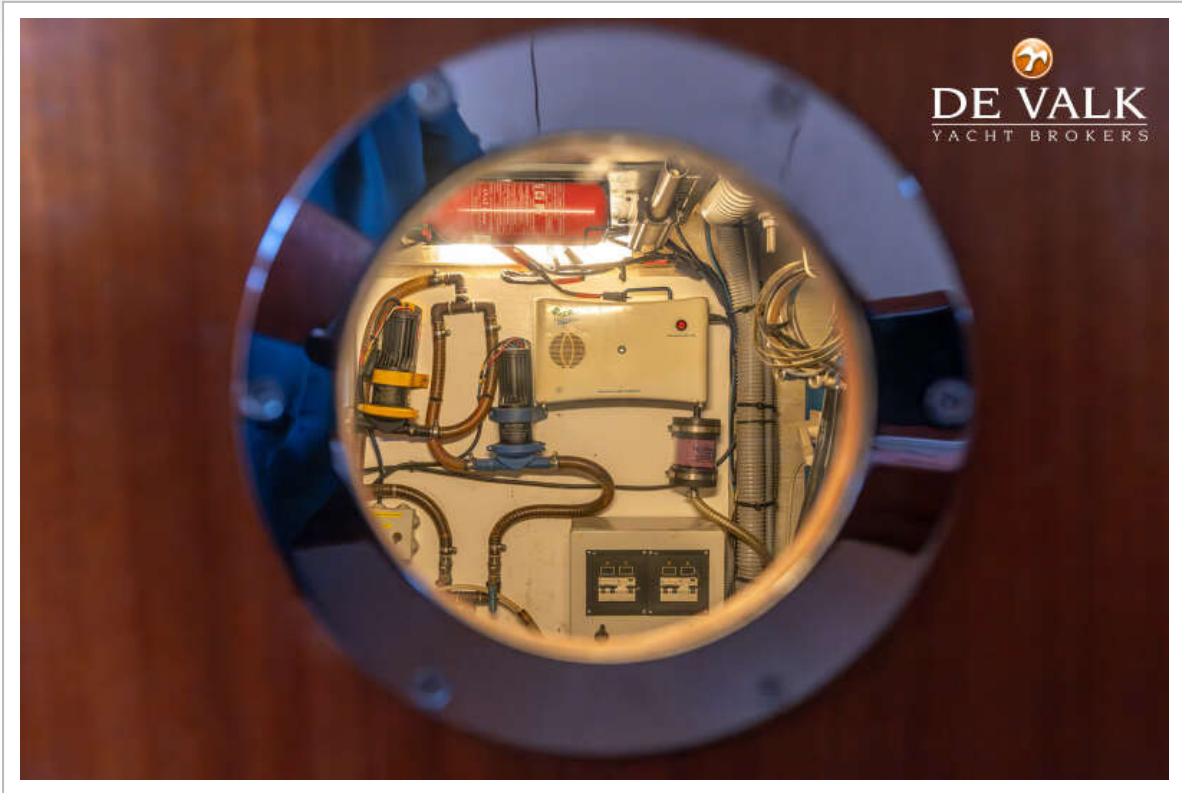
GULFSTAR 60 MKII



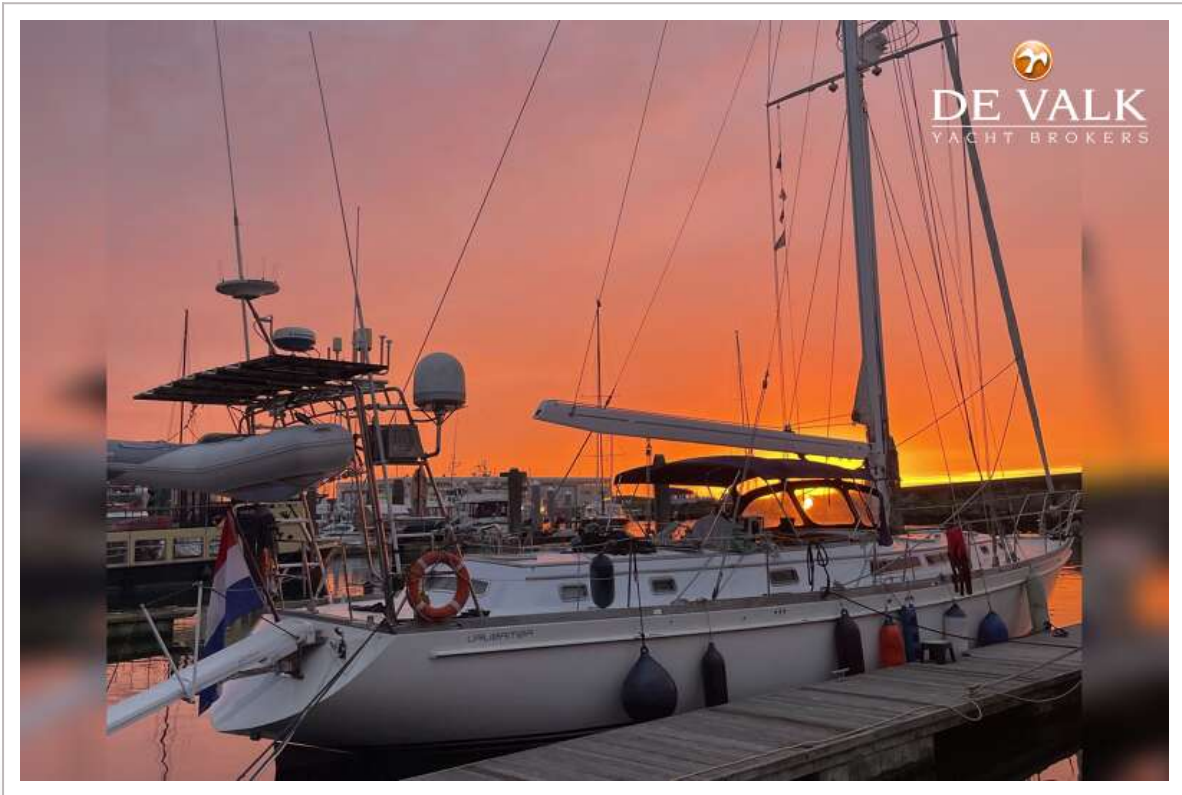
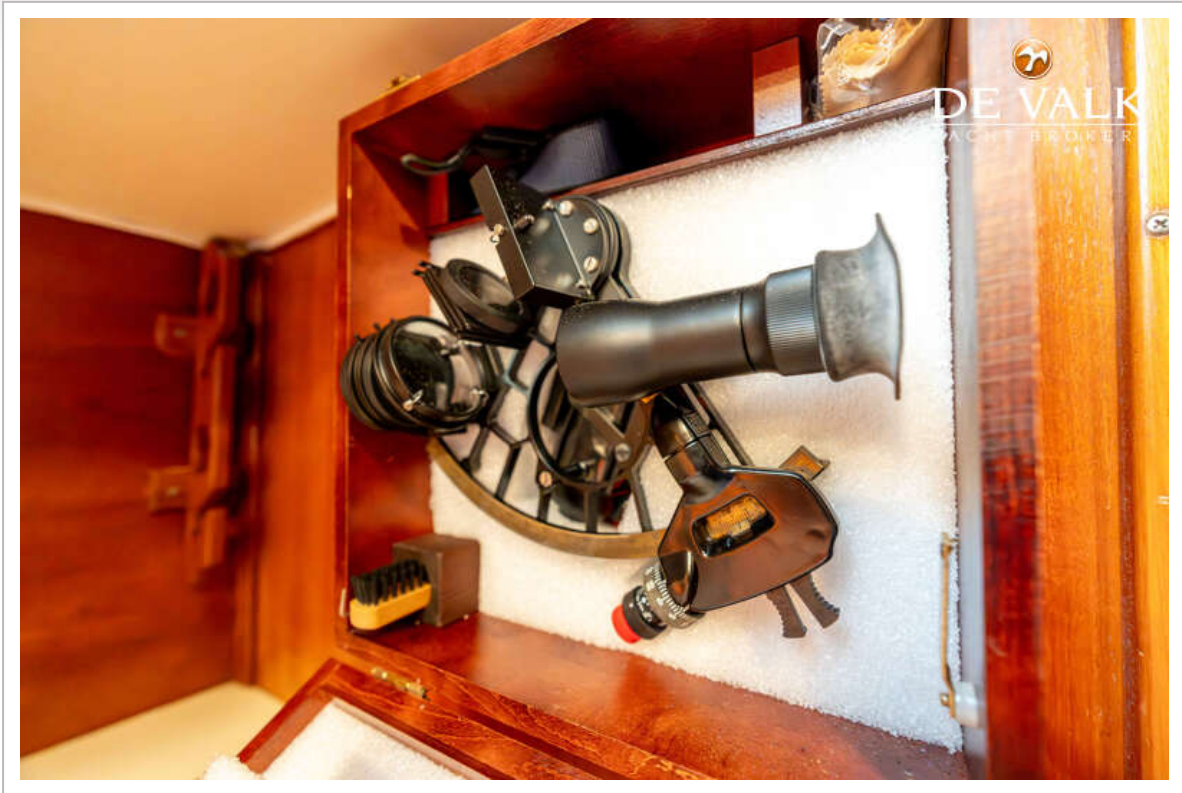
GULFSTAR 60 MKII



GULFSTAR 60 MKII



GULFSTAR 60 MKII



GULFSTAR 60 MKII

