



DE VALK
YACHT BROKERS



HANSE 445



DE VALK
YACHT BROKERS

KOMMENTARE DES MAKLERS

This Hanse 445 is an ideal family cruiser with a spacious owner's cabin in the front (ensuite separate toilet & separate shower), 2 aftcabins, bathroom (toilet & shower). This Hanse 445 is nice maintained and well equipped with North Sails (full battened mainsail, self-tacking jib, Code-0 + furler, Gennaker), 2x electric winch, teak deck, 2x Carbon Y-Spoke steering wheel, Kabola central heating, Simrad equipment, retractable bow thruster. This Hanse 445 is from the 2nd owner (no charter). Make an appointment quickly via our office in Sint Annaland for a viewing on board in Scheveningen.

Jan-Ward van Dantzig

TECHNISCHE DATEN

Maße	13.52 x 4.38 x 2.25 (m)	Werft	Hanse Yachts
Baujahr	2011	Kabinen	3
Material	GFK	Kojen	6
Motor(en)	1 x Volvo Penta D2-75 F diesel	PS/kW	75.00 (PS), 55.20 (kW)
Verkaufspreis	€ 245.000 (MwSt. Beahlt)	Liegeplatz	elsewhere / nicht im Verkaufsbüro

KONTAKT

Verkaufsbüro	De Valk Sint Annaland	Telefon	+31 166 601 000
Adresse	Koelhuisweg 4 4697 RM Sint Annaland The Netherlands	E-Mail	sintannaland@devalk.nl

HAFTUNGSAUSSCHLUSS

Diese Angaben erfolgen nach bestem Wissen, können jedoch nicht garantiert werden.



ALLGEMEIN

Modell	HANSE 445
Typ	Segelyacht
Rumpflänge (m)	13,52
Wasserlinienlänge (m)	12,20
Breite (m)	4,38
Tiefgang (m)	2,25
Durchfahrtshöhe (m)	21,50
Stehhöhe (m)	2,00
Baujahr	2011
Werft	Hanse Yachts
Land	Deutschland
Entwerfer	Judel/vrolijk & co + Hanse Yachts Design
Gewicht (t)	11
Ballast (Ton)	3,5
CE Norm	A
Rumpfmateri al	GFK
Rumpffarbe	Grau (White Grey)
Rumpfform	Rundspant
Art Kiel	Flossen Kiel mit Wulst Torpedo (T-Keel)
Material Aufbauten	GFK
Stossliste	Edelstahl
Deckmaterial	GFK (FRP Sandwich)
Deck Finish	Teak
Deck Finish Aufbauten	Antirutsch Belag & teak
Pflicht Bedeckung	Teak
Antifouling (Jahr)	September 2024
Fenster Material	Polycarbonat
Decks Luke	Lewmar - Flush Design - with Ocean Air Screens & Shades
Bullauge	Aluminium Lewmar with Ocean Air Shades with some screens
Treibstofftank (Liter)	Kunststoff 220



Füllstandsanzeige (Treibstofftank)	ja
Trinkwassertank (Liter)	Kunststoff 450
Füllstandsanzeige (Trinkwasser)	ja
Fäkaelien Tank (Liter)	Kunststoff 2 x 30
Fäkaelien Tankablauf	Deck Verbind. + Uw Linie 2 x
Radsteuerung	Kabelsteuerung 2 x Carbon Y-Spoke steering wheel
Aussen Steuerung	2 x Jefa
Not-Pinne	ja
Weitere Info Rumpf	Vynylesther Sandwich hull preserved with a White Grey gelcoat
Weitere Info	Retractable mooring cleats (also amidships)
Weitere Info	Large & deep storage in bow, accessible via hatch on front deck
Weitere Info	2 x Anthracite steering wheel cover (New in 2021)

UNTERKUNFT

Kabinen	3
Kojen	6
Innen	Mahagoni & White bulkheads & LED interior lights Off-White Alcantara upho
Fussboden	Holz Cherry Style
Salon	Loose & movable double pouf (seat) at saloon table
Standhöhe Salon (m)	2,00
Heizung	wasserheizung 2020 : Kabola Greenline + 3 control units & radiator & blowers
Kartentisch	On Port Side with loose & movable pouf (seat) - Headroom : 2,00m
Achterkabine	2 x
Dinette	Bottle bar in saloon table - Off-White Alcantara upholstery
Kombüse	On Starboard Side - Headroom : 1,93 m
Arbeitsfläche	Duropal Black Quartz surface
Spülbecken	Edelstahl 2 x
Herd	Gas 2 Burner - gimballed
Ofen	ja



Mikrowelle	LG
Kuhlschrank	Top & Front loader with an Isotherm compressor
Gefrier Truhe	Small freezer compartment in the fridge
Warmwasser System	uber Heizung Via Kabola (serviced in 2024)
Wasserdruck System	elektrisch
Eignerkabine	Französisch Bett In front cabin - Headroom : 2,05 m
Länge Bett (m)	2,00 x 1,40
Kleiderschrank	hängend/Schublad/Regale
Badezimmer	en suite 2 x (Separate shower & separate toilet)
Toilet	getrennt Headroom : 1,97 m
Toilette System	handbetrieb Jabsco (12-2020, used 1 year, NOT on pictures, will be mounted)
Handwaschbecken	auf der Toilette
Dusche	getrennt Headroom : 1,97 m
Weitere Info	Slats underneath the mattresses
Gästekabine 1	Doppelbett Port side aft - Headroom : 1,95 m
Länge Bett (m)	2,00 x 1,60
Kleiderschrank	Regale und hängend
Badezimmer	gemeinsam Headroom : 1,91 m
Toilette	gemeinsam
Toilette System	elektrisch Jabsco - Soft Flush
Handwaschbecken	im Badezimmer
Dusche	gemeinsam Headroom : 1,91 m
Gästekabine 2	Doppelbett Starboard side aft - Headroom : 1,93 m
Länge Bett (m)	2,00 x 1,60
Kleiderschrank	Regale und hängend
Weitere Info	New 2020 : Kabola Thermostate via Wifi controlled
Weitere Info	Original boiler in system, not in use, but just in case of

MASCHINEN

Motoranzahl	1
--------------------	---



Marke	Volvo Penta
Typ	D2-75 F
PS	75
kW	55.20
Kraftstoffart	Diesel
Installiert im Jahr	2011
Höchstgeschwindigkeit (Kn)	8,5
Marschgeschwindigkeit (Kn)	7,5
Verbrauch (l/h)	3
Kühlungssystem Motor	indirekte Wärmetauscher
Antrieb	Saildrive
Saildrive Dichtung	2011
Motor bedienung	Seilzug Kabel
Bugschraube	elektrisch RMC Swing Thruster (retractable). Relay has been renewed in 2022
Propeller Typ	falt Volvo Penta
Propellerblätter	3
Hand Bilgenpumpe	1 x Whale
Elektrische Bilgenpumpe	1 x
Elektrische Anlage	12 & 220 Volt
Starterbatterie	New in 2024 : 1 x 74 Ah
Versorgungsbatterie	New in 2022 : 5 x 100 Ah
Bugschraubebatterie	New in 2022 : 1 x 50 Ah Optima Red Top
Batterie Monitor	New in 2022 : Mastervolt Easy View 5
Batterie Ladegerat/Umwandler	New in 2022 : Mastervolt Mass Combi Ultra 12V/150A/3000W
Dioden-Batterie-Koppler	Renewed in 2024
Landstrom	mit Kabel
Weitere Info	Engine serviced in January 2024
Weitere Info	New seals on the saildrive shaft & new oil in 2022
Weitere Info	Engine room blower. Vetus waterlock in exhaust system

NAVIGATION



Kompass	Plastimo Contest 130
Tiefenanziege/Logge	Simrad IS20
Windlupe anzeige	Simrad IS20 - Sensor renewed in 10-2020
Autopilot	Simrad AP24
Ruderwinkel Anzeige	Via autopilot
Plotter/GPS	Simrad NSE8 in stainless steel bracket on end of cockpit table
Elektronische Kart(en)	1 x (old)
AIS Transceiver	Watcheye Class B Transponder
Navigation Beleuchtung	LED anchor light (New in 2020)
Weitere Info	VHF antenna+cable till chard table present - VHF NOT present
Weitere Info	100 A Alternator on the engine

AUSRÜSTUNG

Spritzverdek mit Griffbügel	Anthracite (New in 2021)
Kuchenbude	Only used in winter period - higher than normal (New in 2021)
Bimini	Anthracite (New in 2021)
Cockpit Polster	Off White
Cockpit Tisch	Teak - with folding teak side panels & removable light
Badeplattform	Hinged & manual folding down - covered with teak
Badeleiter	Edelstahl (Removable)
Heckdusche	Hot & cold water
Anker	Delta 20 Kg
Ankerkette	50 m Stainless steel chain
Ankerwinde	elektrisch Lewmar (with a wired Quick remote on the bow)
Ausserborder Halterung	Plastic - on the pushpit
See Reling	Draht/Seil Stainless steel - double wired
Zupackenschiene (aufbauten)	Edelstahl
Seiten-Einstieg Seereling	On both sides
Heckkorb	Stainless steel
Bugkorb	Stainless steel
Rettungsboje	Besto



Sicherheitsleine auf Deck	ja
Fenderkissen	ja
Festmacher	ja
TV	Samsung Smart TV
Radio-CD Spieler	Pioneer
DVD Spieler	Pioneer
Lautsprecher im Pflicht	2 x
Lautsprecher im Salon	Clarion
Uhr - Barometer	ja
Feuerloscher	ja
Letzte Wartung Feuerloscher	2023
Weitere Info	The gass hoses have been renewed in 2023
Weitere Info	Wine bottle rack under the galley floor
Weitere Info	Anthracite cover over cockpit table (New in 2021)

RIGG

Rig	Fraktionell 19/20
Stehendes Gut	Drahtseil
Marke Mast	Sparcraft
Material Mast	Aluminium
Salings	2 x Set
Großsegel-Persenning	Anthracite Lazy-Bag with Lazy Jacks (new in 2021)
Latten traveller	ja
Durchelatted großsegel	North Sails ACL (2011)
Fock	North Sails ACL Self tacking Jib (2011)
Rollreffanlage	Furlex 300 TD - drum mounted below deck
Genua-Persenning	Sand-coloured
Code Zero	North Sails (2011) with a furler
Gennaker	North Sails (2011) with a snuffer & package
Selbstwende Anlage	ja
Reff Vorrichtung	Schnell-1-Lein-Reffsystem



Achterstag Spanner	mechanisch (Adjustable via folding wheel)
Baumniederhohler	Gasdruckfeder Sparcraft
Genua Schotwinschen	2 x Aluminium Lewmar 48ST (Electric)
Fall Winschen	2 x Aluminium Lewmar 48ST
Winsch Schonbezug	4 x Anthracite (New in 2021)
Weitere Info	Dyneema Mainsail Hallyard renewed in 2022. 3 x Maststep
Weitere Info	Dyneema Self Tacking Jib Sheets renewed in 2020



HANSE 445



HANSE 445



HANSE 445



HANSE 445



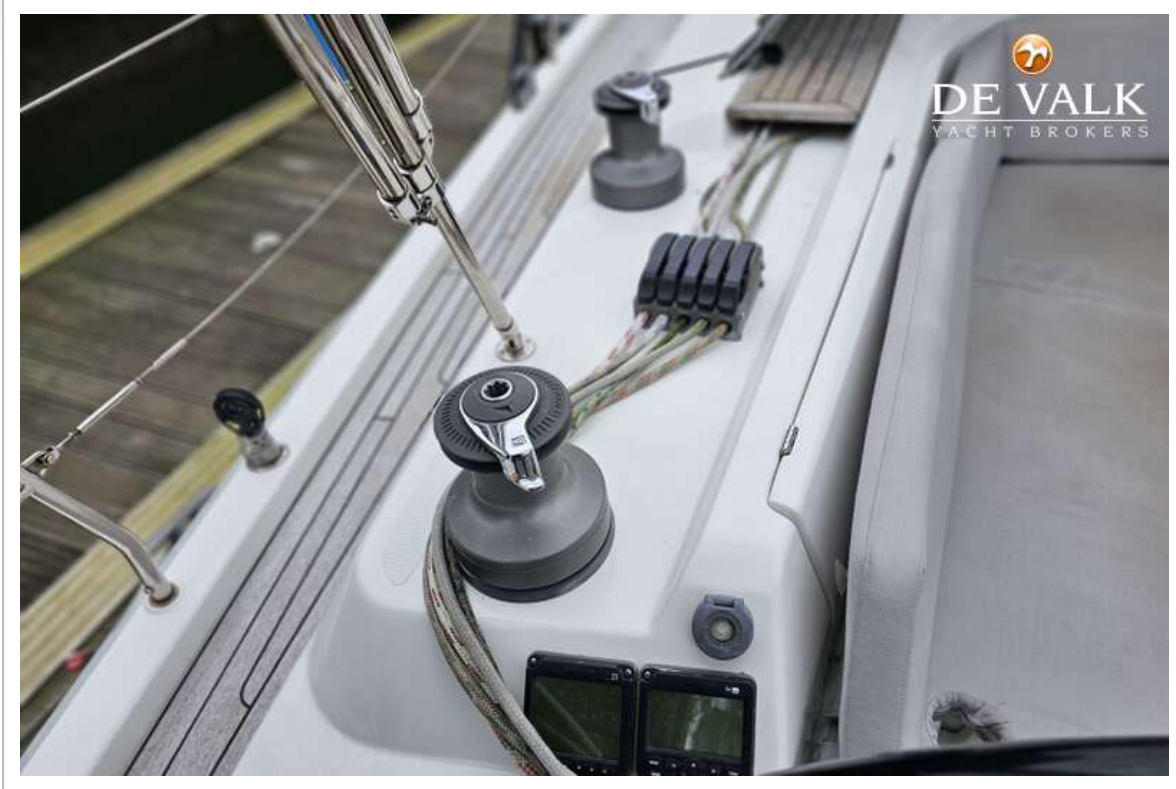
HANSE 445



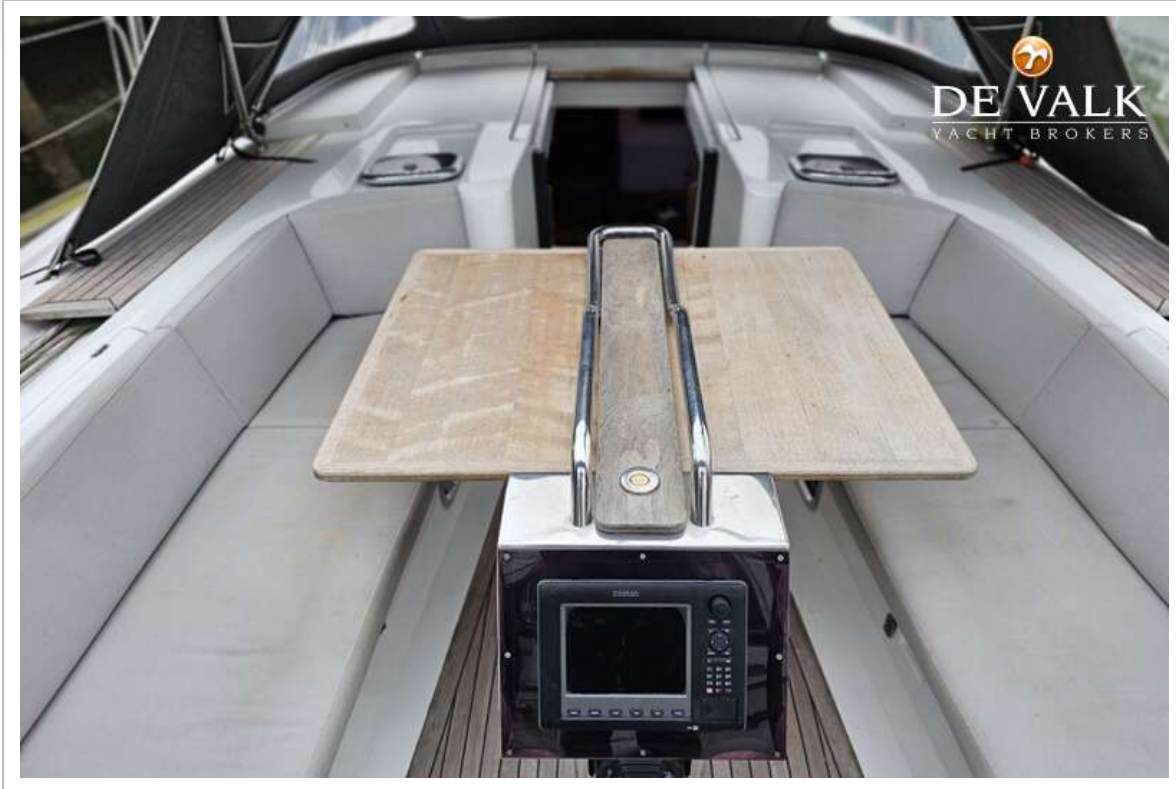
HANSE 445



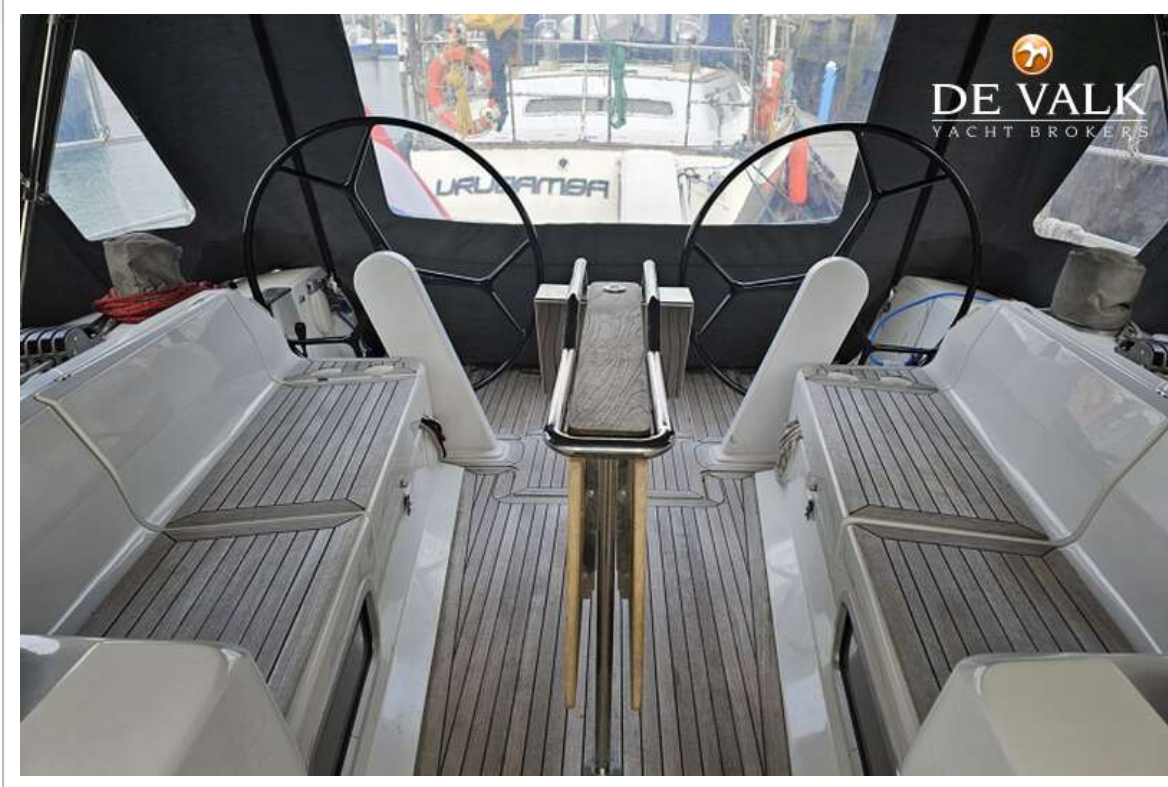
HANSE 445



HANSE 445



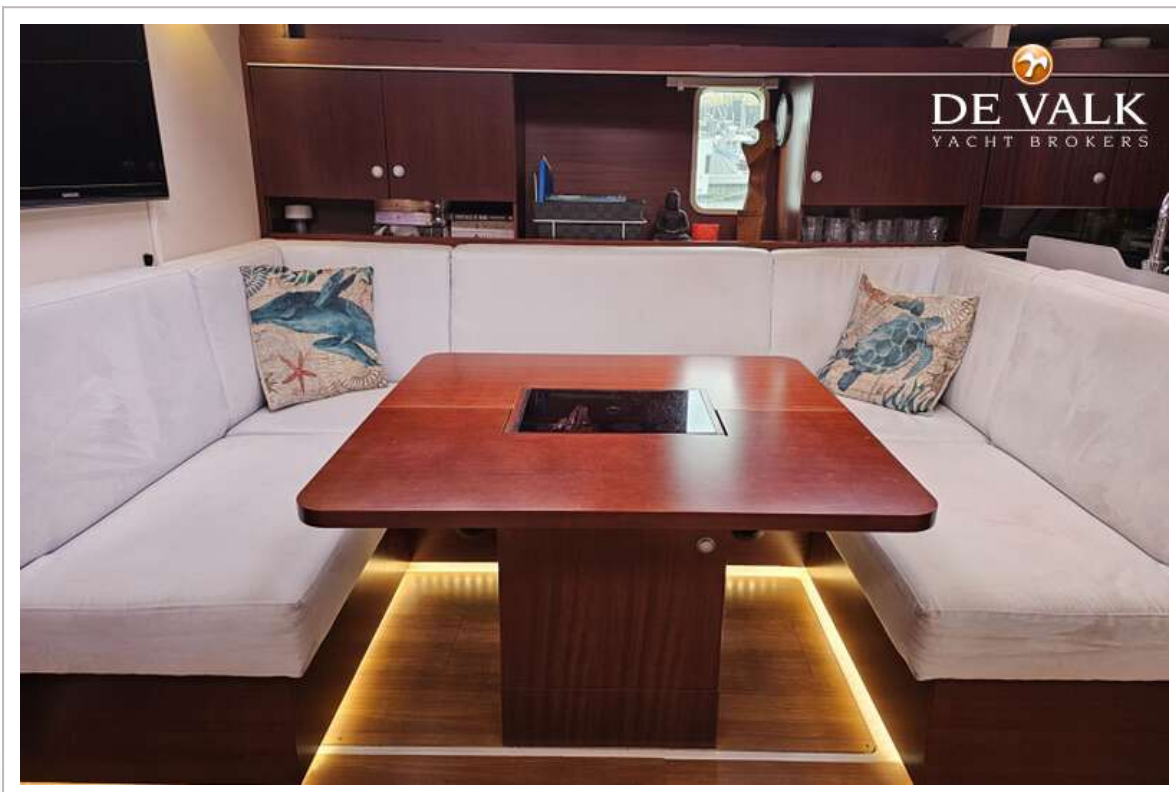
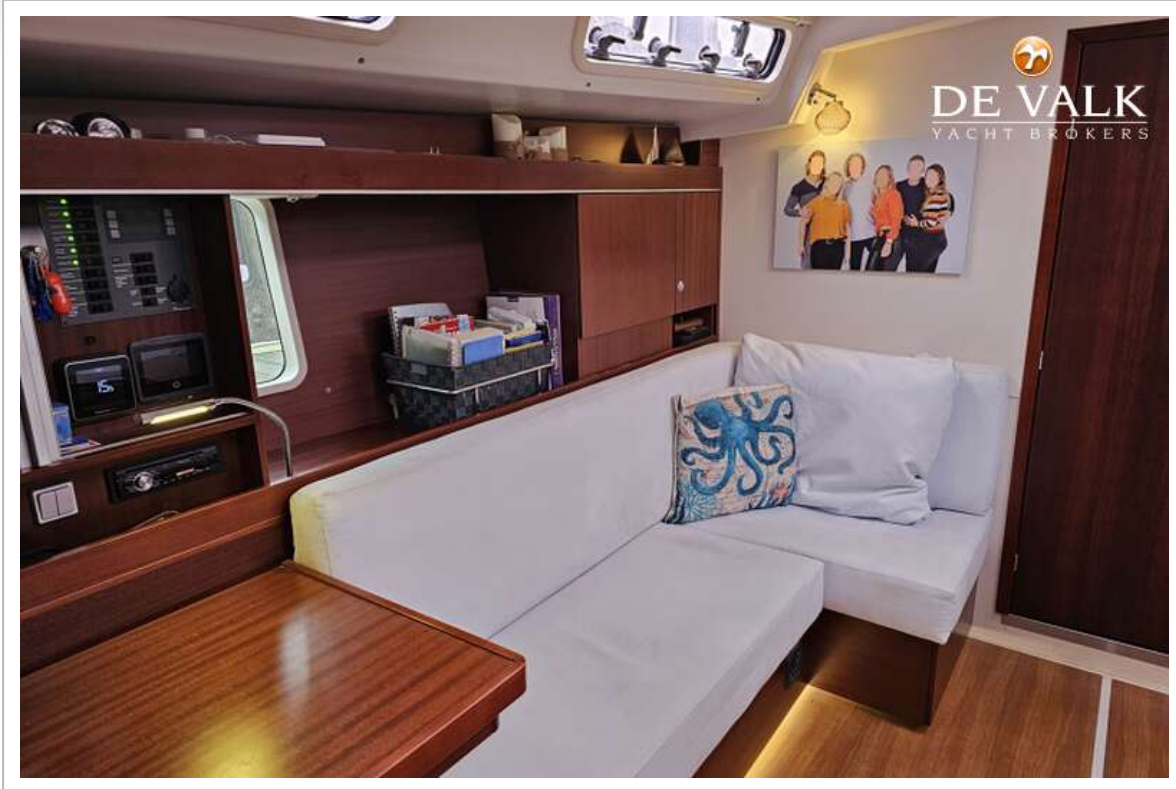
HANSE 445



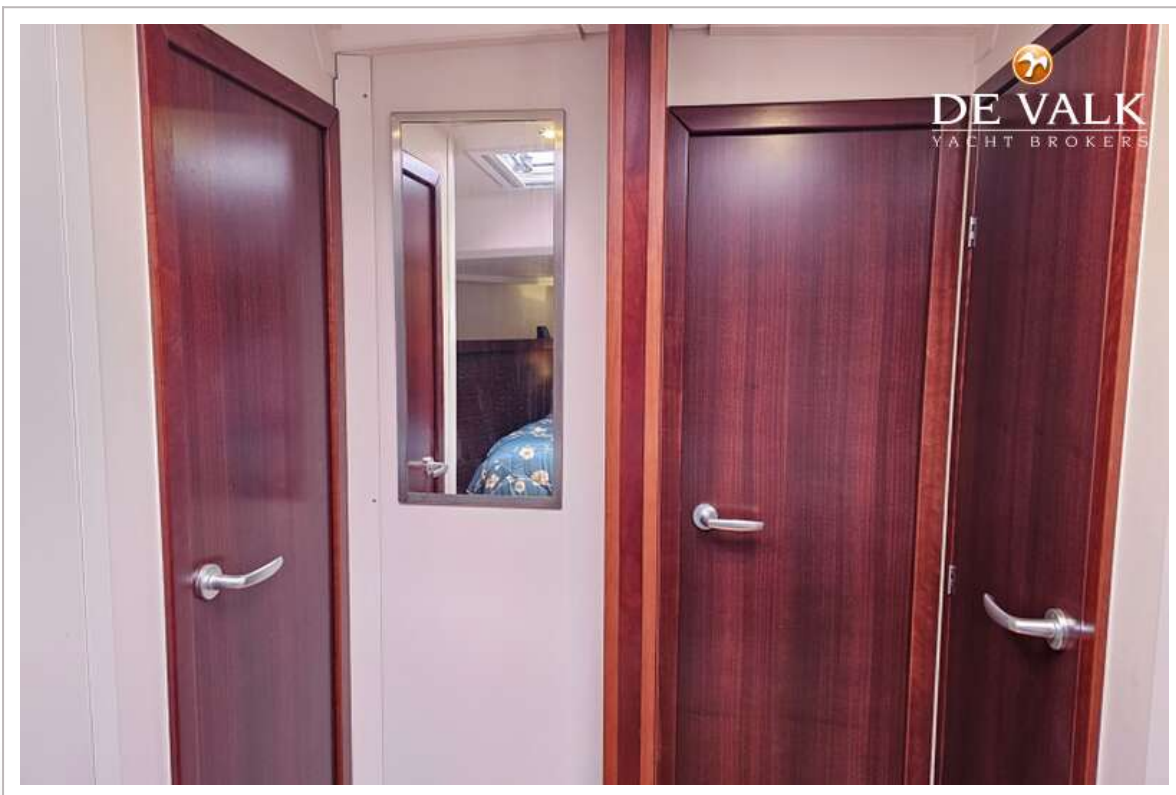
HANSE 445

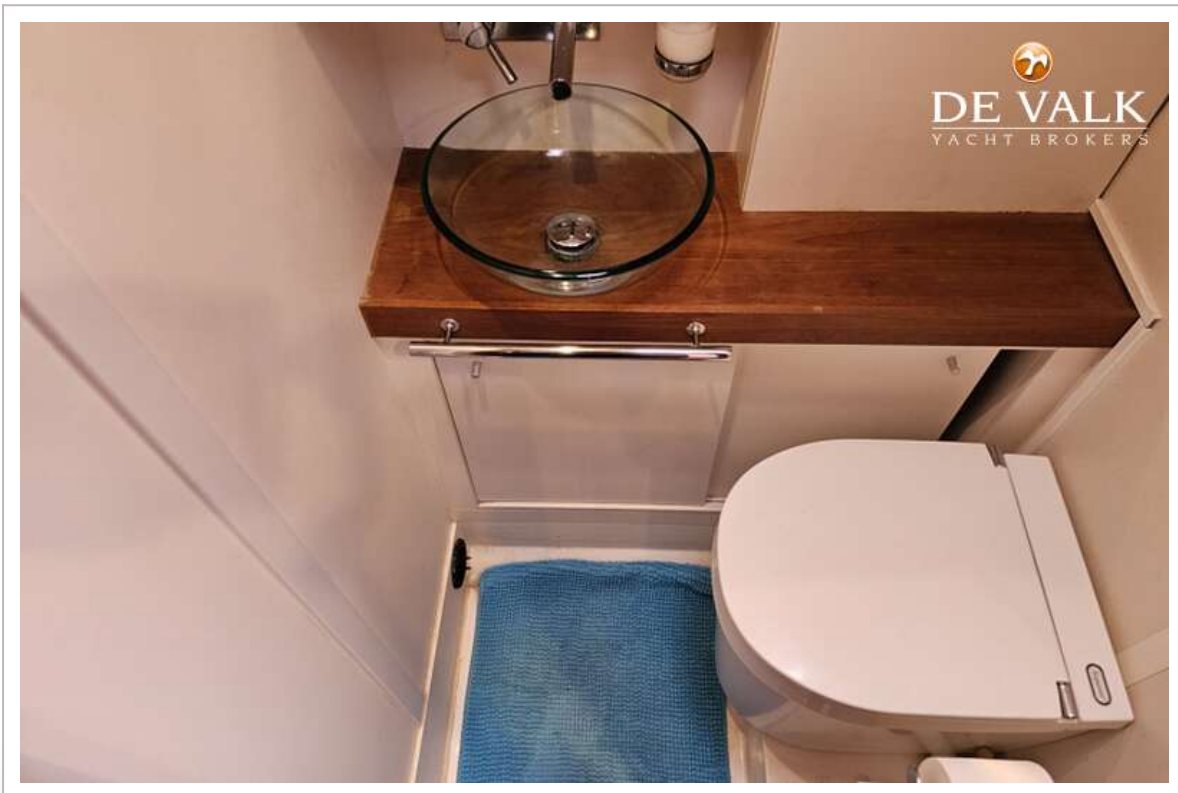


HANSE 445

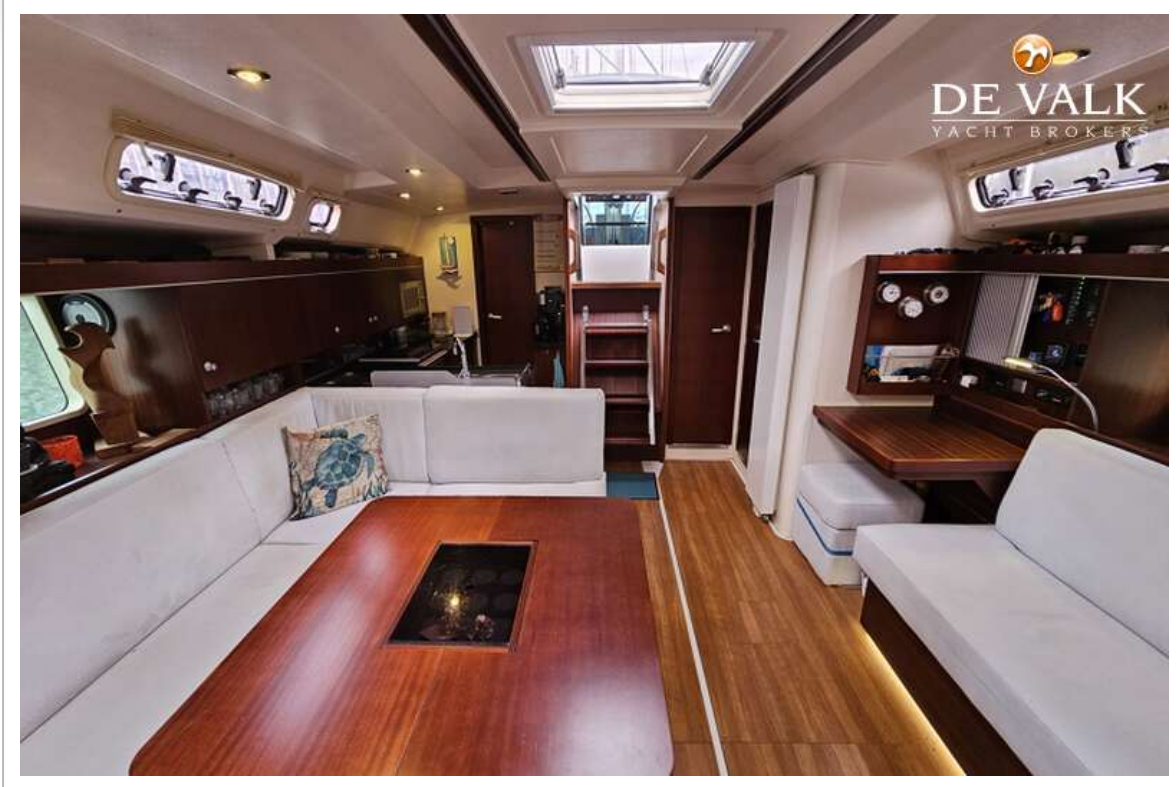


HANSE 445

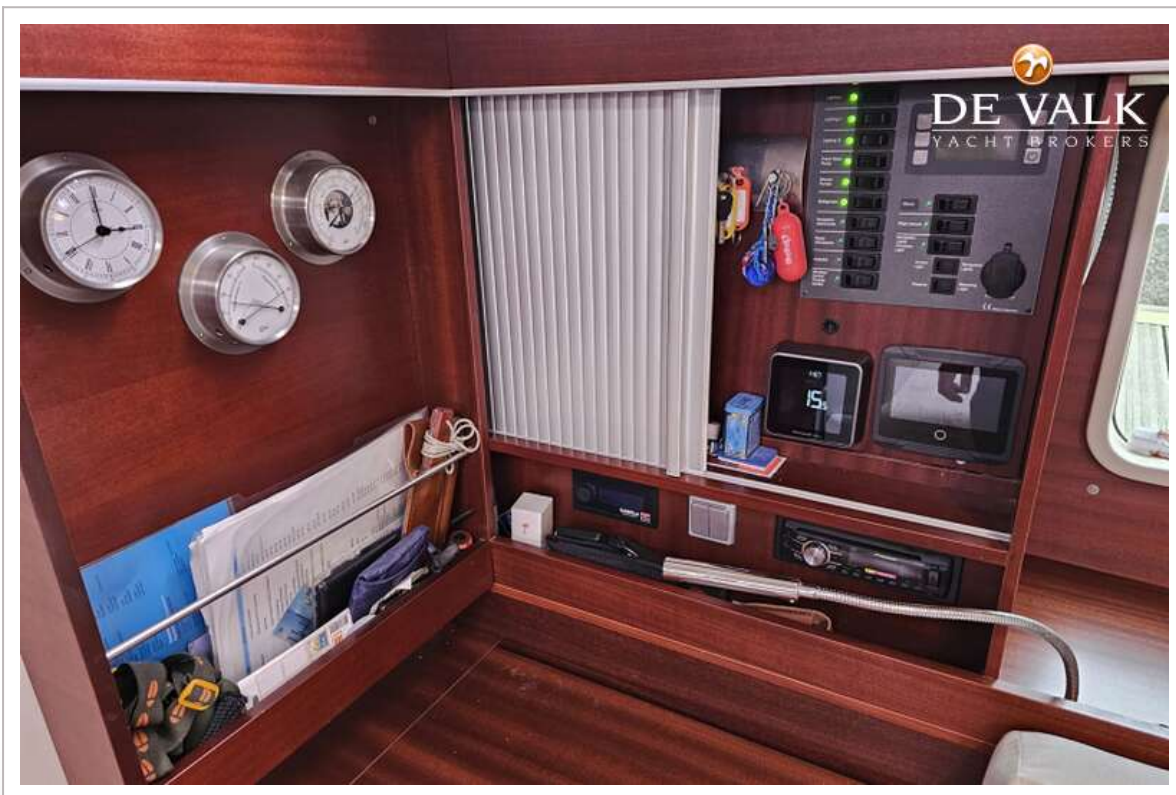
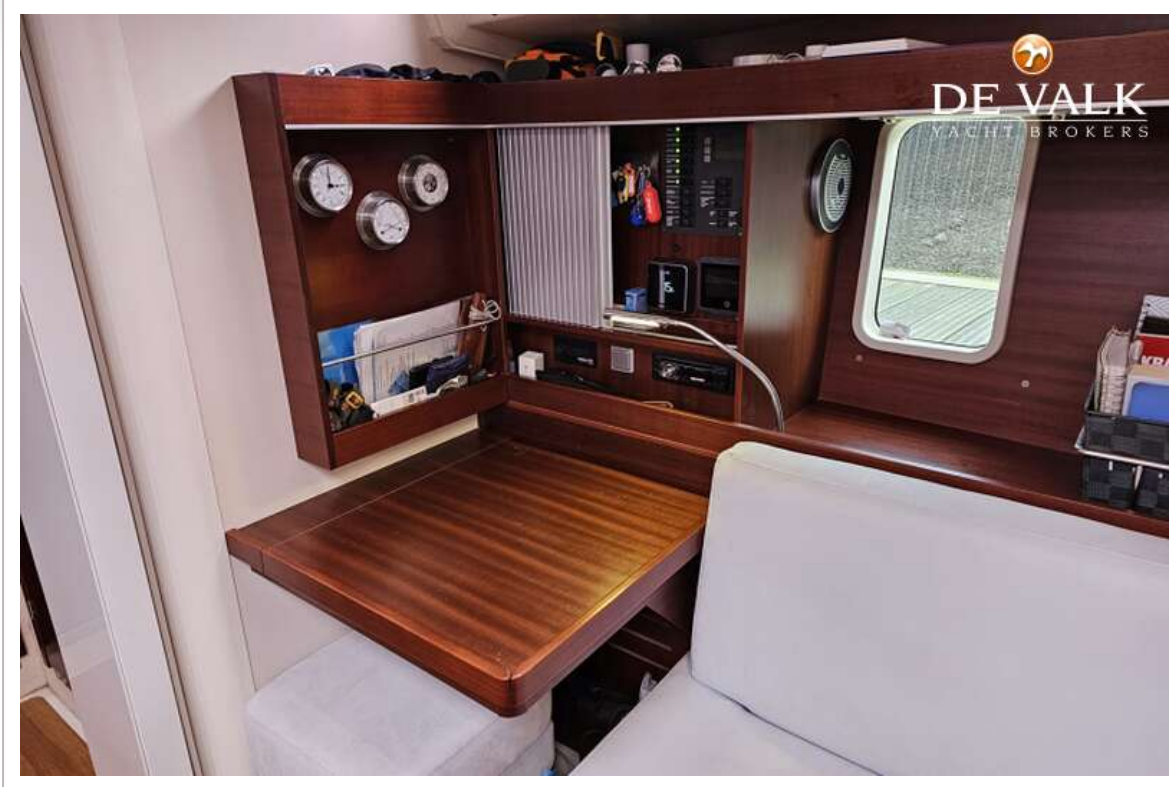




HANSE 445



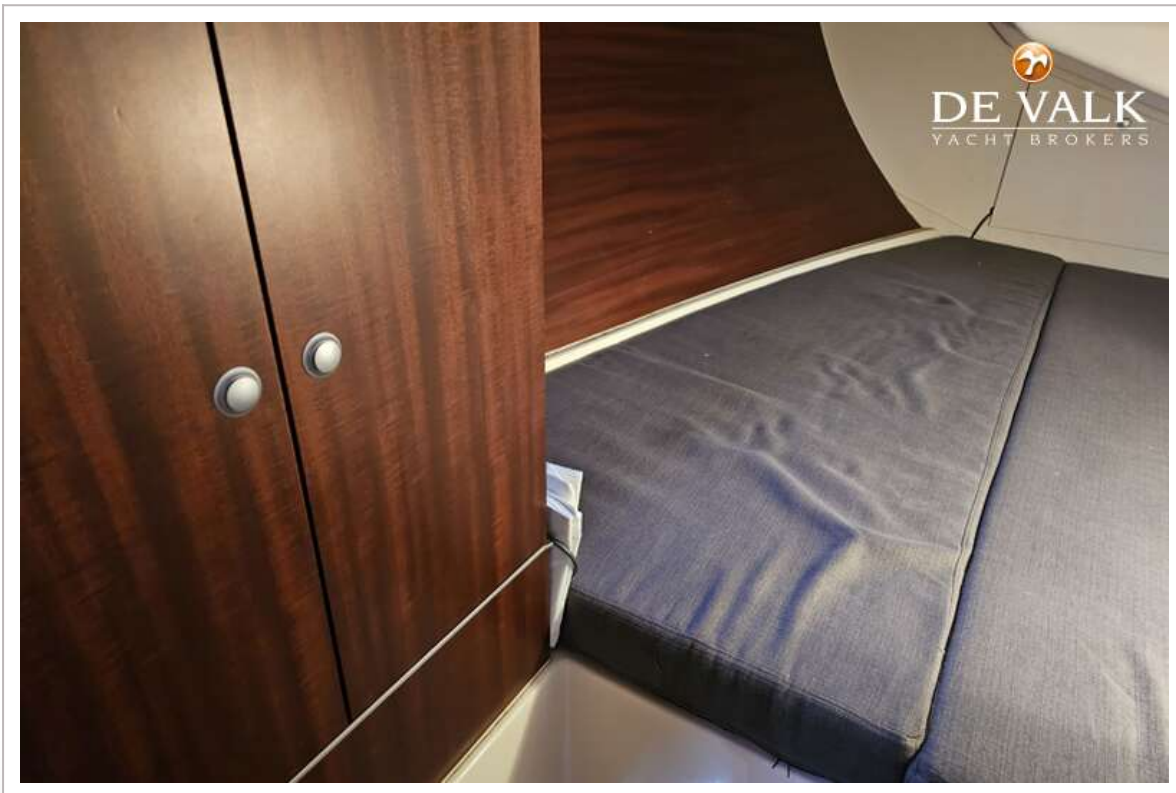
HANSE 445



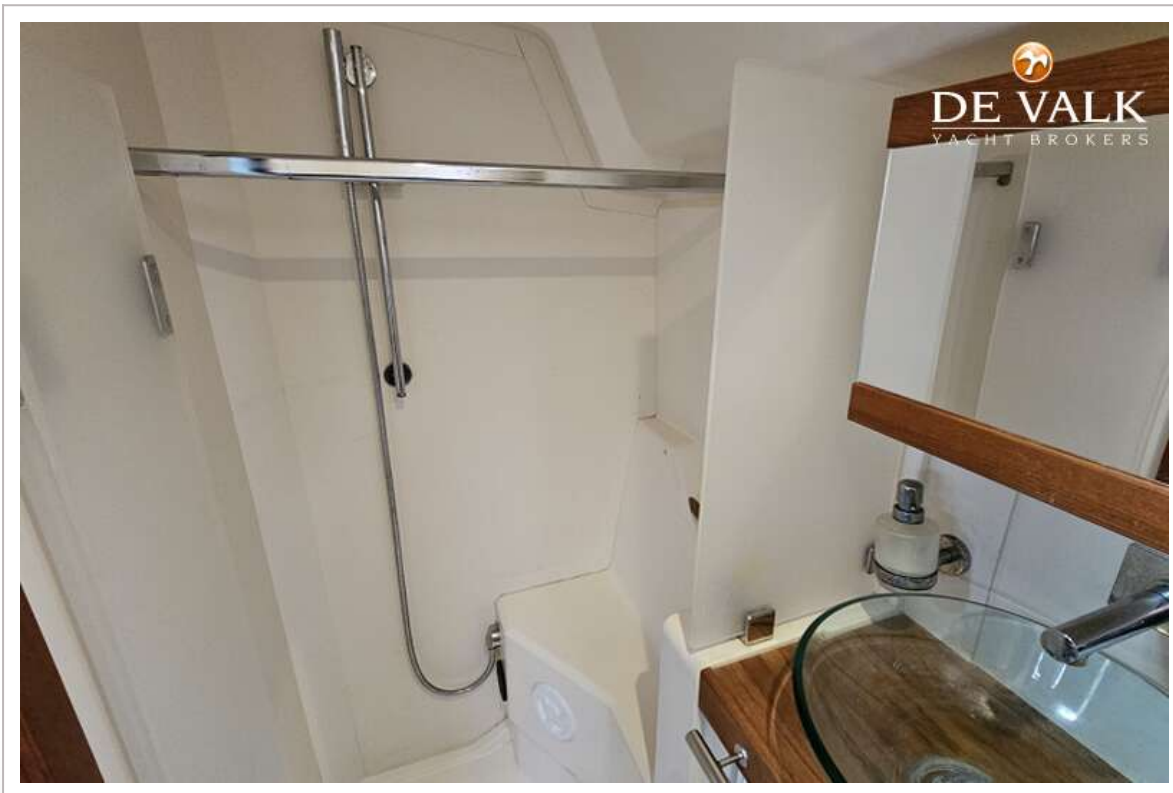
HANSE 445

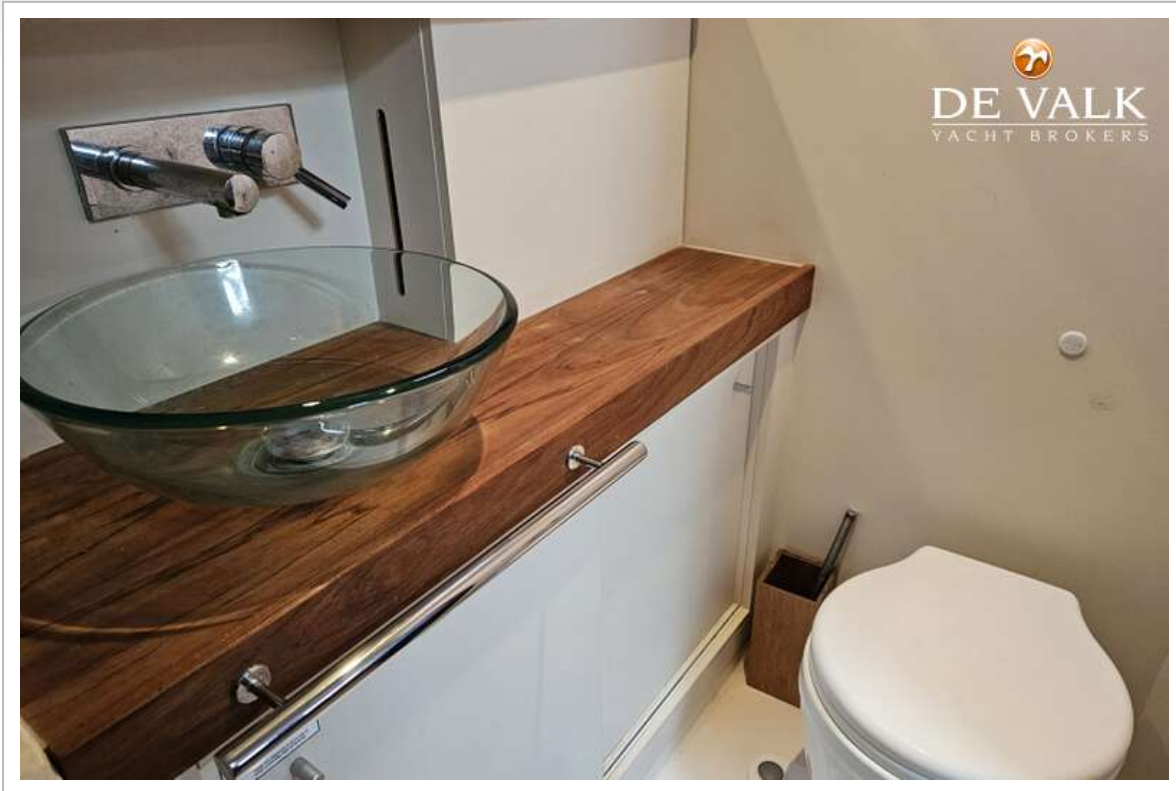


HANSE 445



HANSE 445





INTERIOR LAYOUT



C2

B1

A1



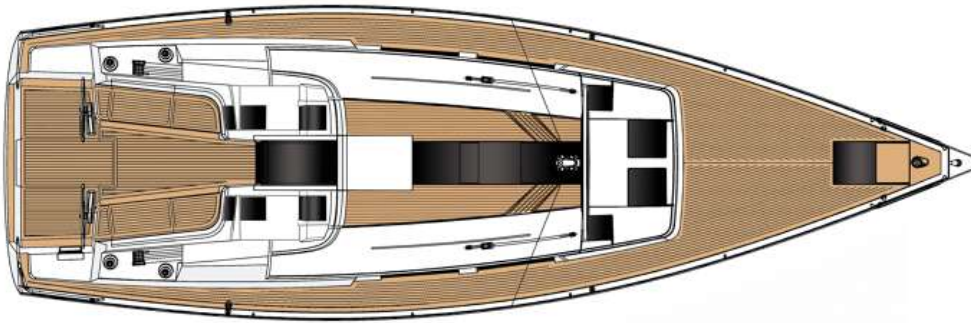
HanseYachts AG | Salinenstraße 22 | 17489 Greifswald
www.hanseyachts.com

Hanse
BREAKING RULES · SETTING TRENDS



HANSE 445

DECK PLAN



HanseYachts AG | Salinerstraße 22 | 17489 Greifswald
www.hanseyachts.com

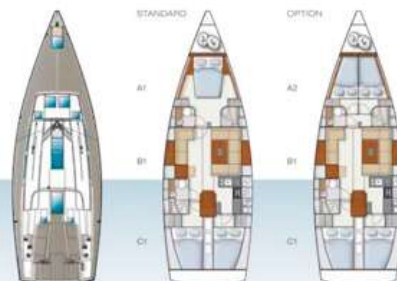


SPECIFICATION HANSE 445



LOA	13.52 m 44'3"	Mast length above WL	20.25 m 66'4"
Hull length	12.40 m 40'9"	Total sail area	96.36 m ² 1040'1" sq ft
UWL	12.20 m 40'2"	Main sail	55.73 m ² 599'9" sq ft
Beam	4.38 m 14'4"	Self-tacking jib	40.83 m ² 437'3" sq ft
Draft	2.25 m 7'4" standard	Genoa 106%	45.81 m ² 493'1" sq ft
	1.82 m 5'8" option	Gennaker	150.65 m ² 1621'6" sq ft
Displacement	11 t 24,250 lb (approx.)	Rig	I 17.52 m 57'5"
	11.3 t 24,912 lb (approx.)		J 5.25 m 17'2"
Ballast	3,500 kg 7,716 lb (approx.)		P 16.65 m 54'3"
Engine	39 kW / 53 HP		E 5.90 m 19'4"
Fresh water	450 l (approx.)	Design	judel / voolijk & co
Fuel tank	220 l (approx.)	Interior	HanseYachts Design
CE Certificate	A (ocean)		

INDIVIDUAL CABIN CONCEPT



All measurements are approximate. Specification and material can be changed without notice. Errors excepted.



HANSE 445

