



DE VALK  
YACHT BROKERS



RO/PAX DOUBLE ENDED FERRY 107 M



DE VALK  
YACHT BROKERS

## KOMMENTARE DES MAKLERS

Double ended RO-PAX open type Ferry Built 2017 under INSB. Powered by 4 x Caterpillar main engines with total 4000hp. 4 x auxiliary gensets. Four rudder propeller VETH system. Oil-water separator. 13.5 knots service speed. 140 European type cars on main deck OR 24 trucks of 12m - and 44 cars on lower deck. Height of main garage is 4.95m. Total cars capacity 182 and passengers 800. Passengers elevator from garage to saloon. Air-conditioned throughout.

*Sofia Iliia-Salvanou*

## TECHNISCHE DATEN

<b>Maße</b>	107.00 x 18.08 x 2.65 (m)	<b>Werft</b>	BEKRIS SHIPYARD, PERAMA,
<b>Baujahr</b>	2017	<b>Kabinen</b>	
<b>Material</b>	Stahl	<b>Kojen</b>	
<b>Motor(en)</b>	4 x CATERPILLAR C32 ACER MARINE diesel	<b>PS/kW</b>	4 x 4,000.00 (PS), 2,944.00 (kW)
<b>Verkaufspreis</b>	€ 8.816.000 (MwSt. Nicht bezahlt)	<b>Liegeplatz</b>	

## KONTAKT

<b>Verkaufsbüro</b>	De Valk Corfu	<b>Telefon</b>	(+30) 266 111 8095
<b>Adresse</b>	New Port of Corfu, near Gouvia Marina 490 83 Corfu Greece	<b>E-Mail</b>	corfu@devalk.nl

## HAFTUNGSAUSSCHLUSS

Diese Angaben erfolgen nach bestem Wissen, können jedoch nicht garantiert werden.



# RO/PAX DOUBLE ENDED FERRY 107 M

## ALLGEMEIN

<b>Modell</b>	RO/PAX DOUBLE ENDED FERRY 107 M
<b>Typ</b>	Motoryacht
<b>Rumpflänge (m)</b>	107,00
<b>Breite (m)</b>	18,08
<b>Tiefgang (m)</b>	2,65
<b>Baujahr</b>	2017
<b>Werft</b>	BEKRIS SHIPYARD, PERAMA,
<b>Land</b>	Griechenland
<b>Entwerfer</b>	PETYCHAKI
<b>Rumpfmateriale</b>	Stahl

## MASCHINEN

<b>Motoranzahl</b>	4
<b>Marke</b>	CATERPILLAR
<b>Typ</b>	C32 ACER MARINE
<b>PS</b>	4000
<b>kW</b>	2944
<b>Kraftstoffart</b>	Diesel
<b>Installiert im Jahr</b>	2016
<b>Höchstgeschwindigkeit (Kn)</b>	15,2
<b>Marschgeschwindigkeit (Kn)</b>	13,5



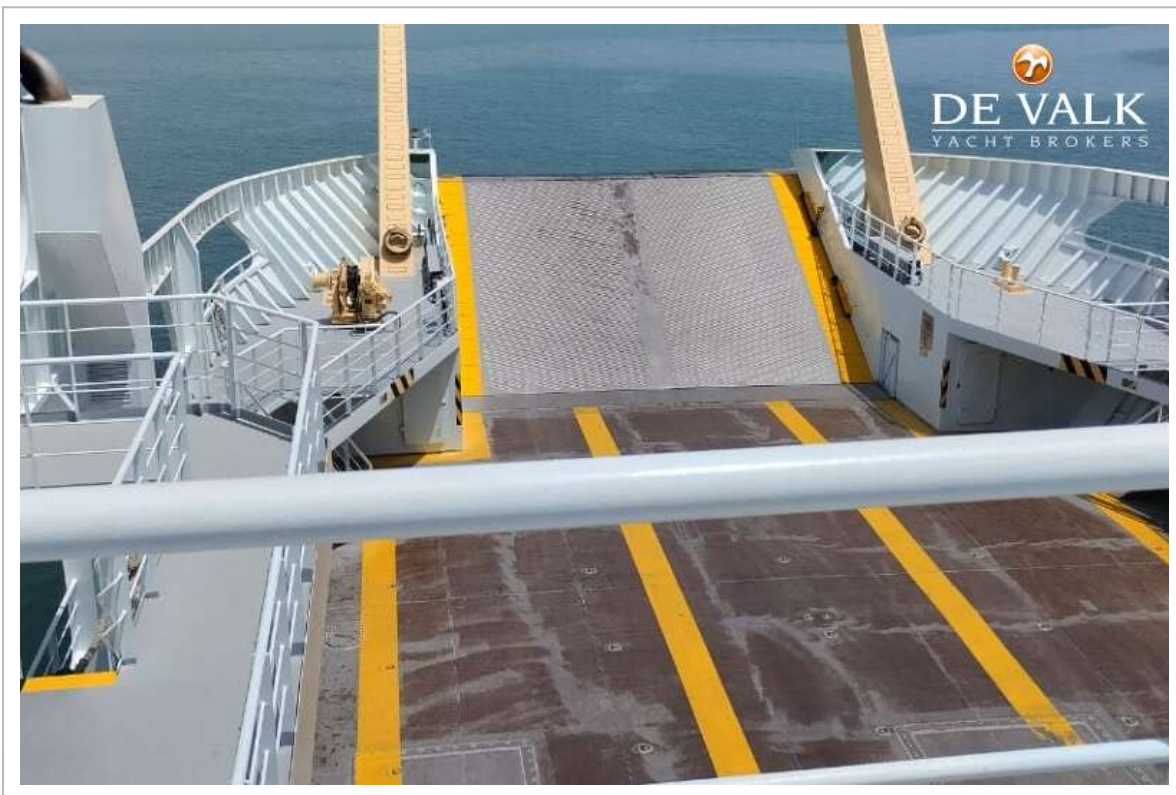
# RO/PAX DOUBLE ENDED FERRY 107 M



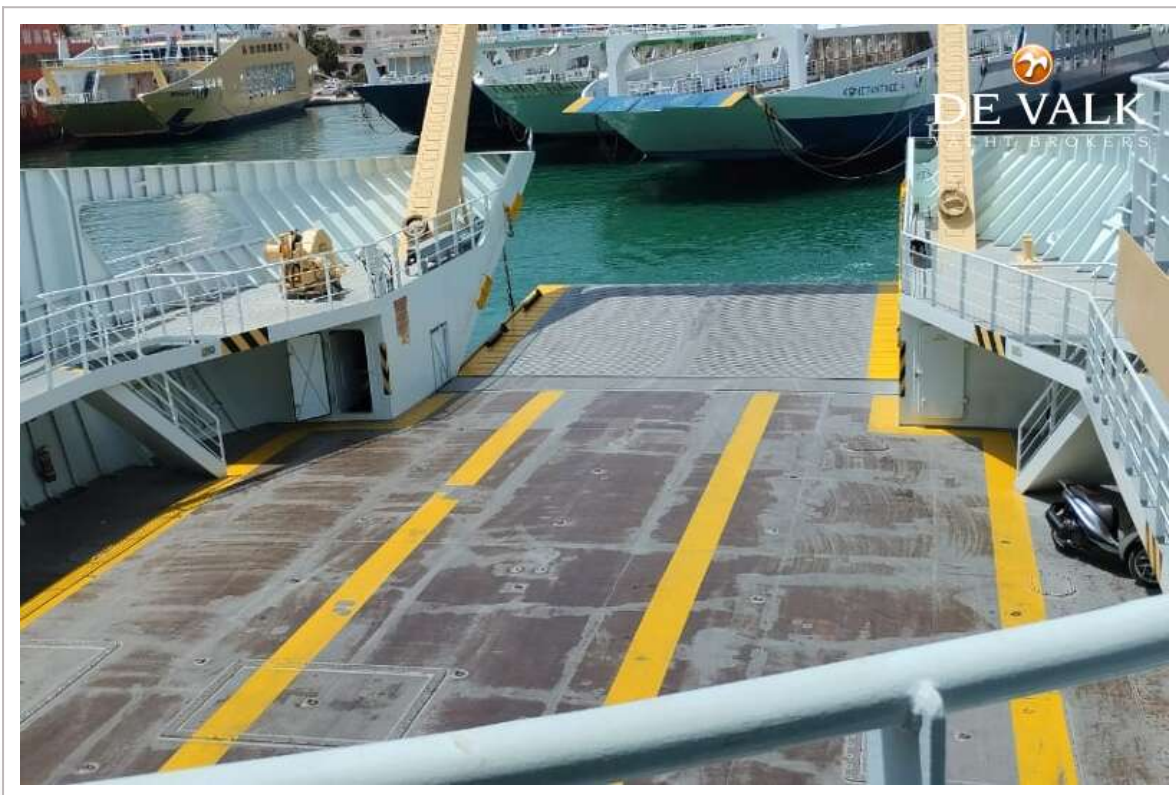
# RO/PAX DOUBLE ENDED FERRY 107 M



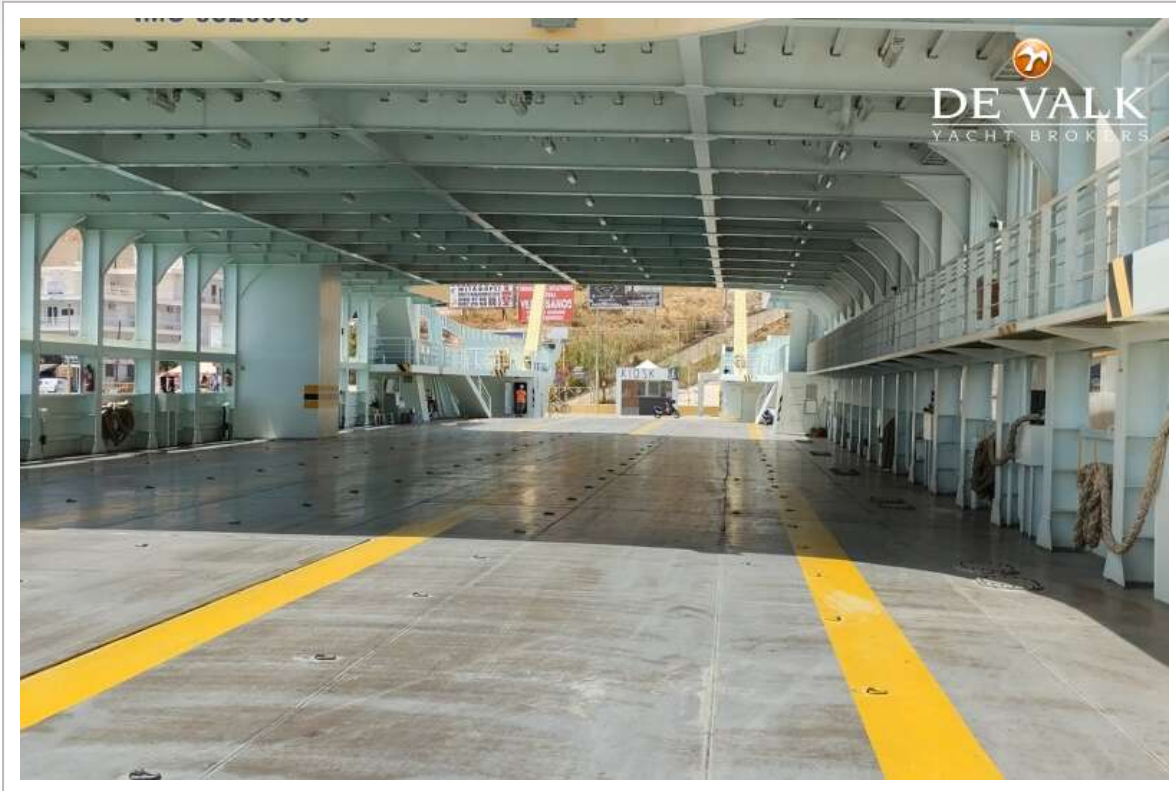
# RO/PAX DOUBLE ENDED FERRY 107 M



# RO/PAX DOUBLE ENDED FERRY 107 M

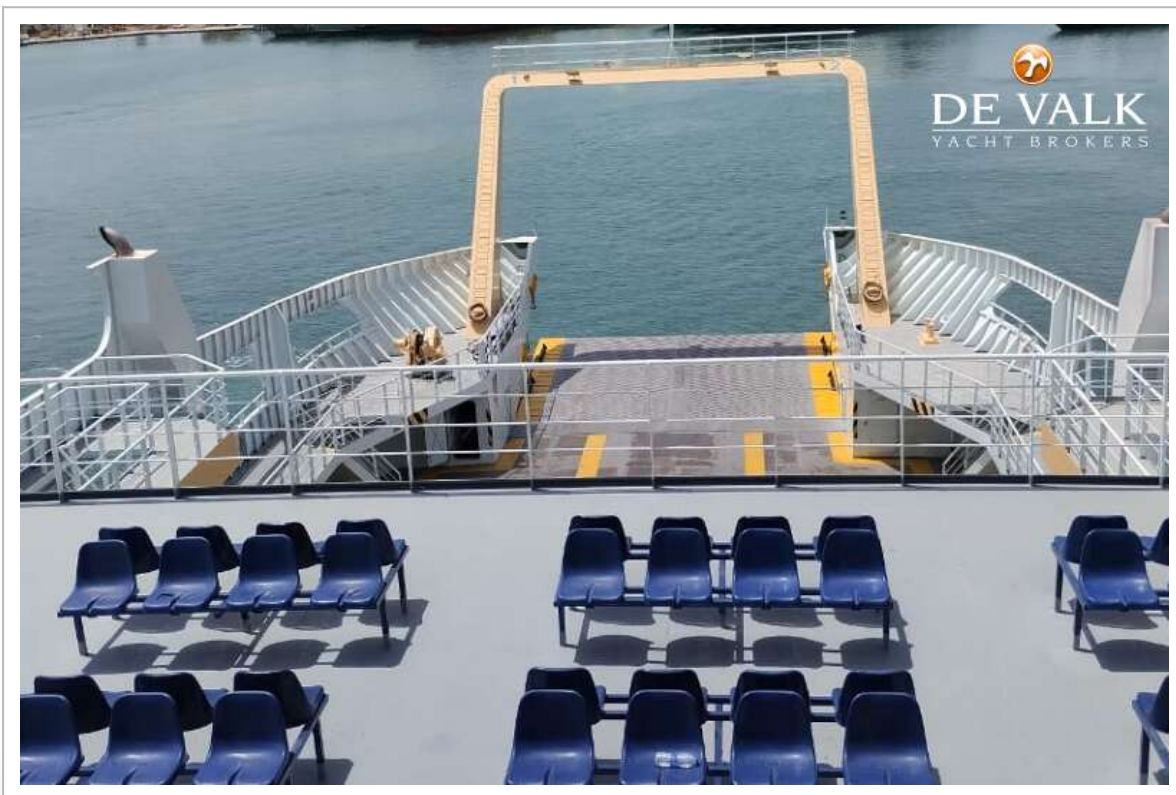


# RO/PAX DOUBLE ENDED FERRY 107 M

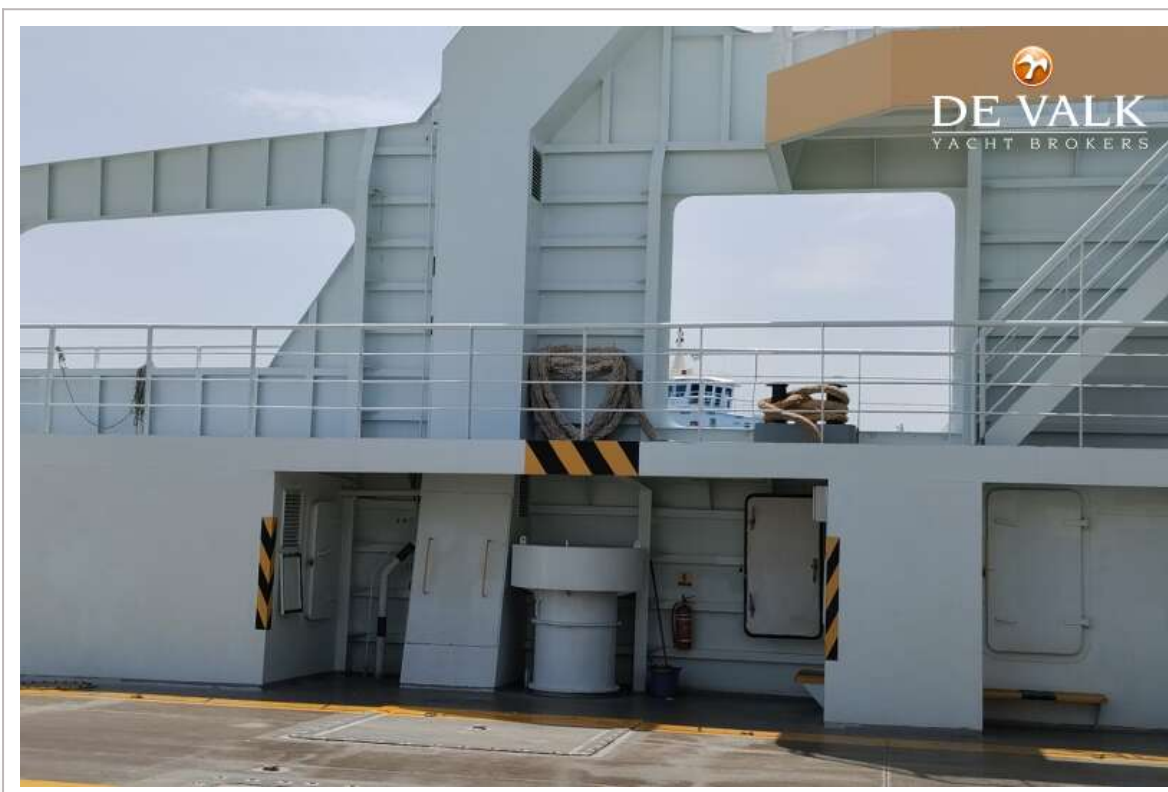
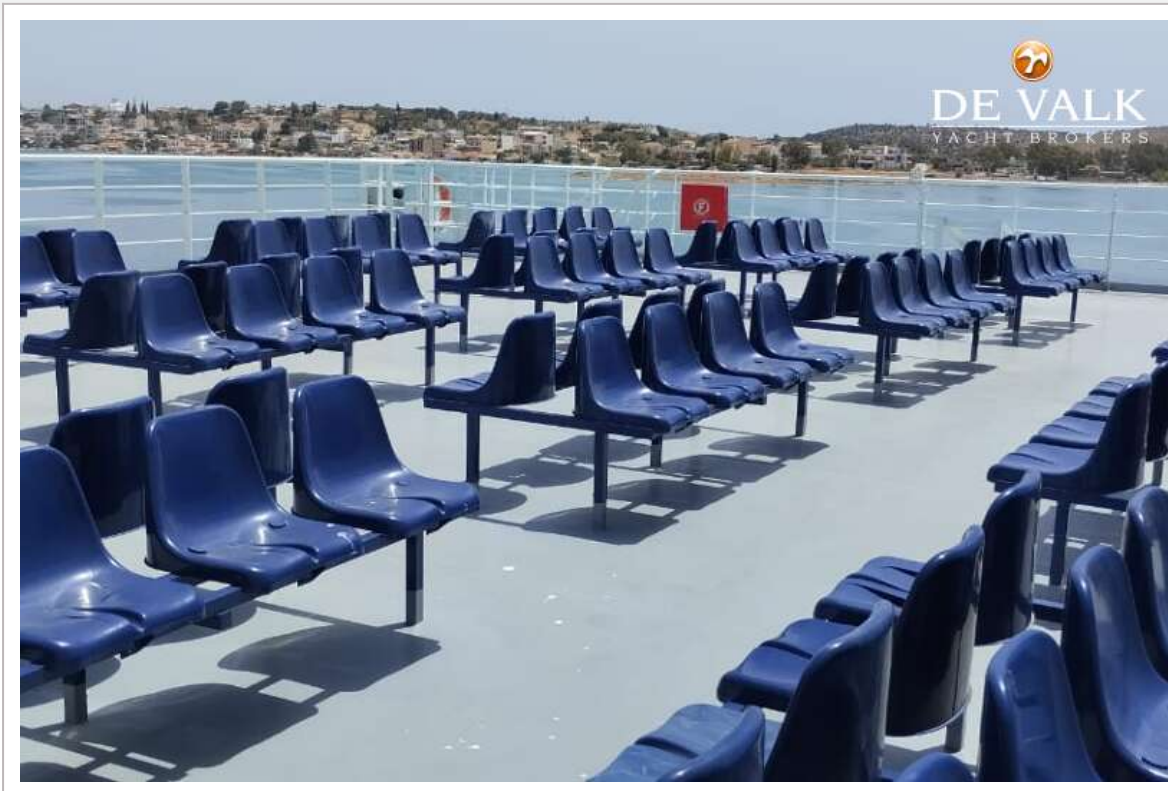




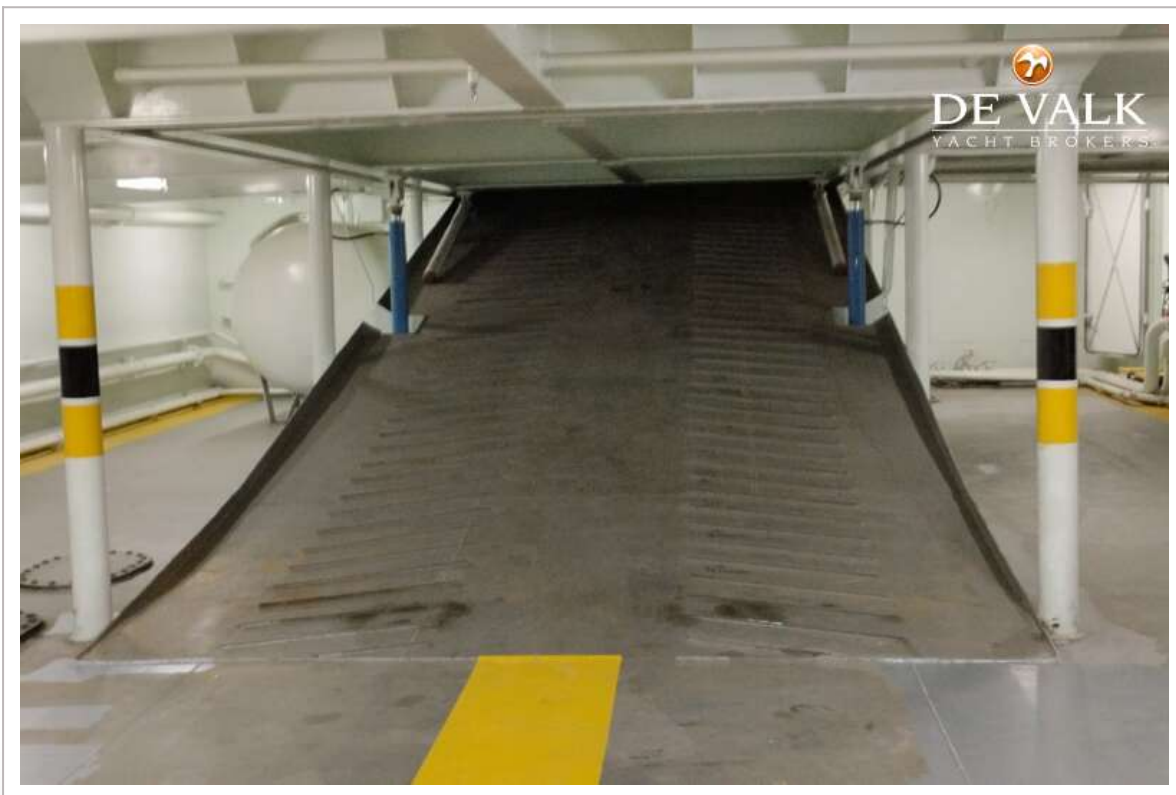
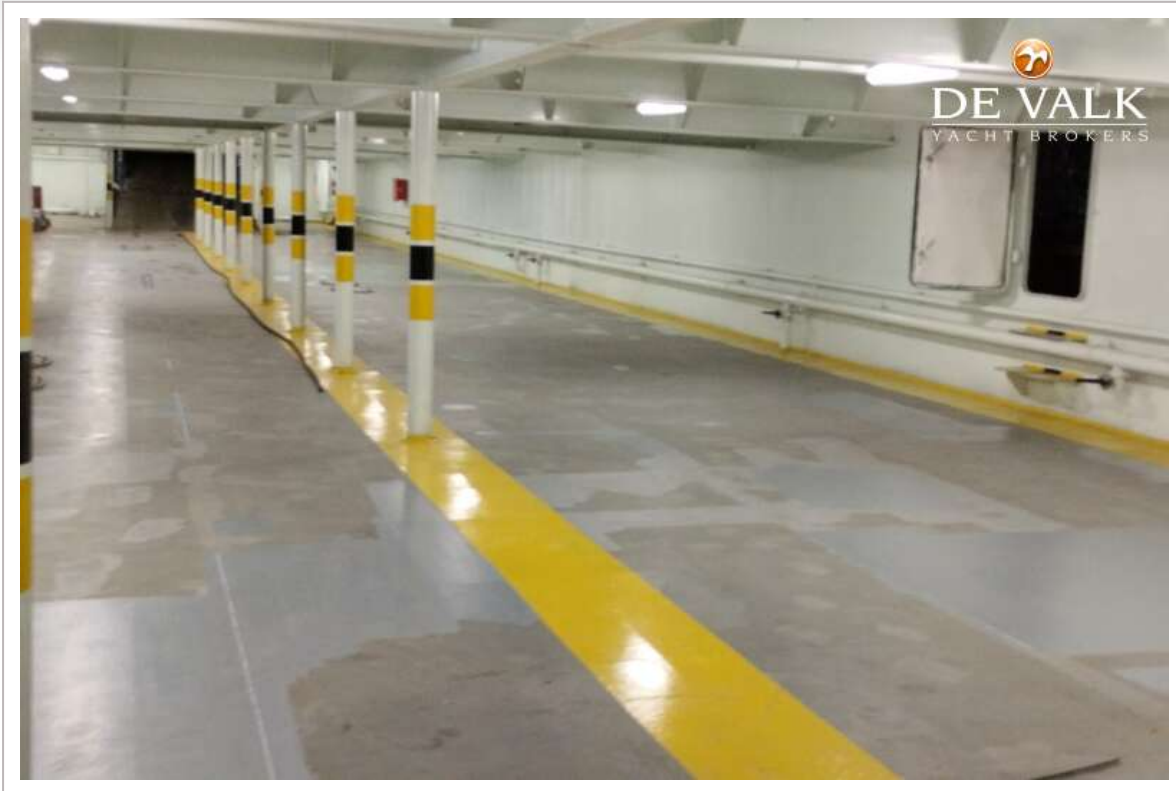
# RO/PAX DOUBLE ENDED FERRY 107 M



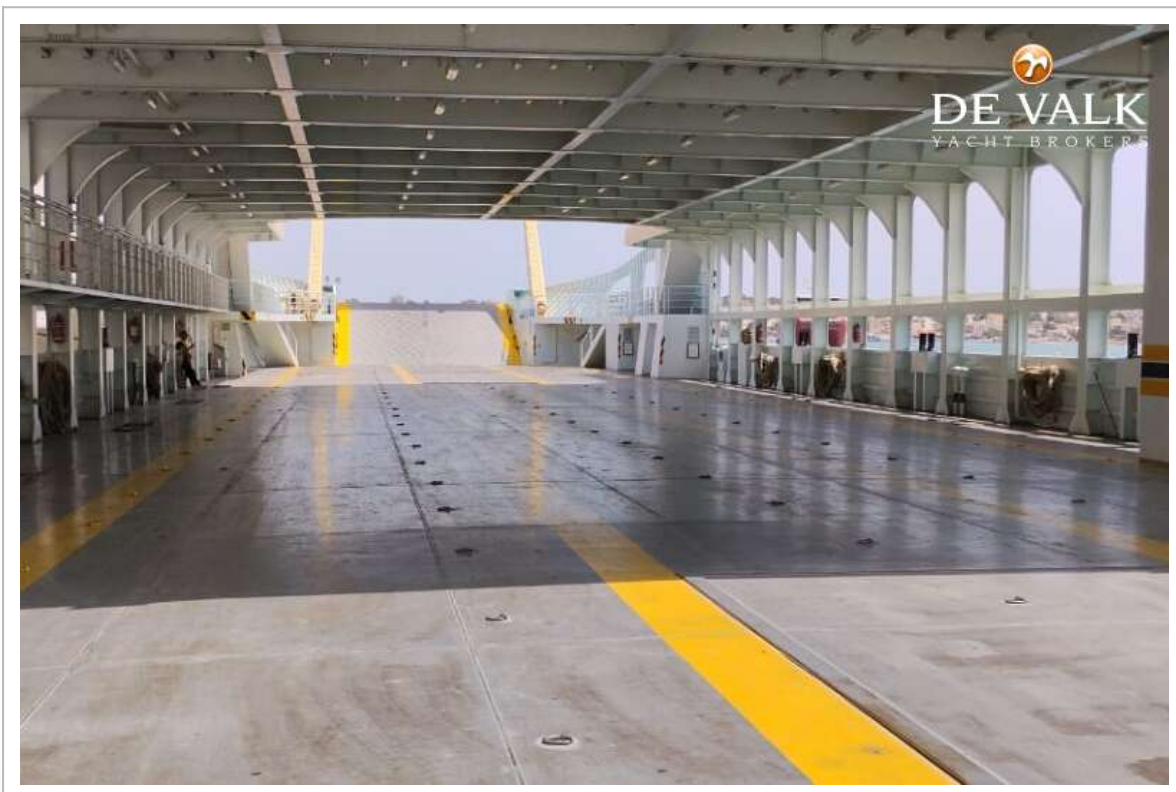
# RO/PAX DOUBLE ENDED FERRY 107 M



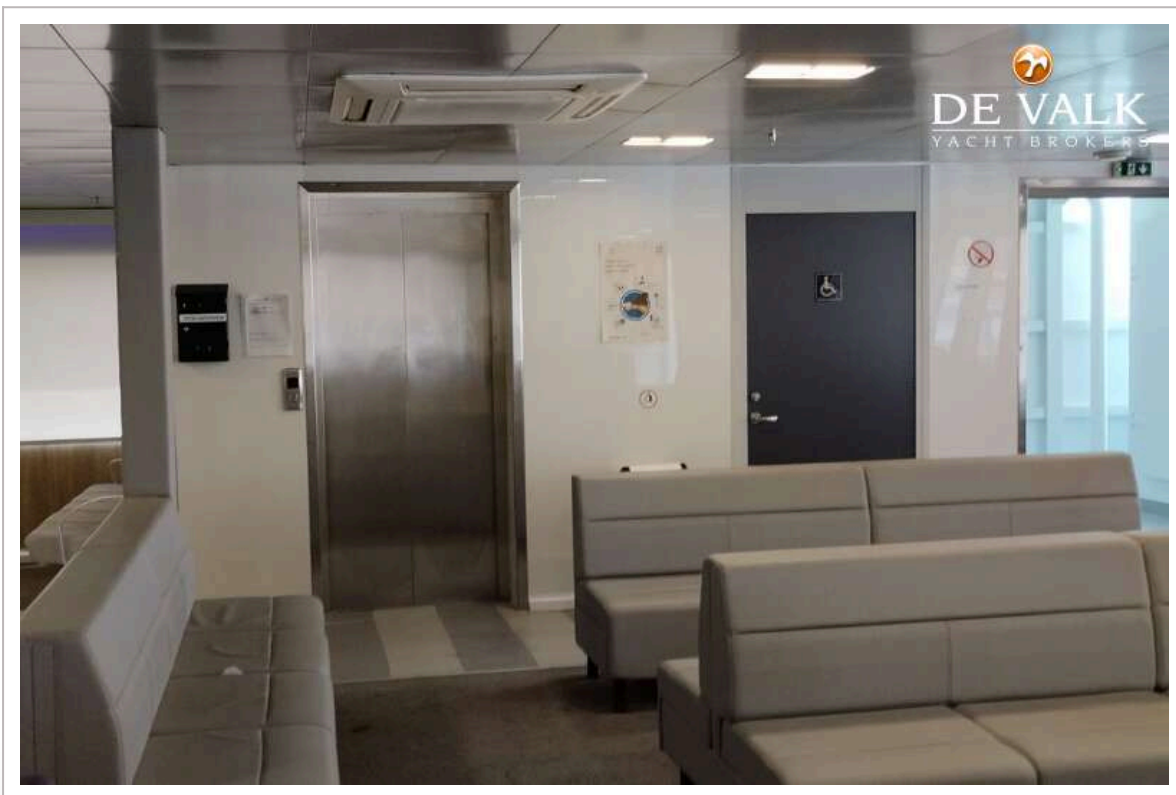
# RO/PAX DOUBLE ENDED FERRY 107 M



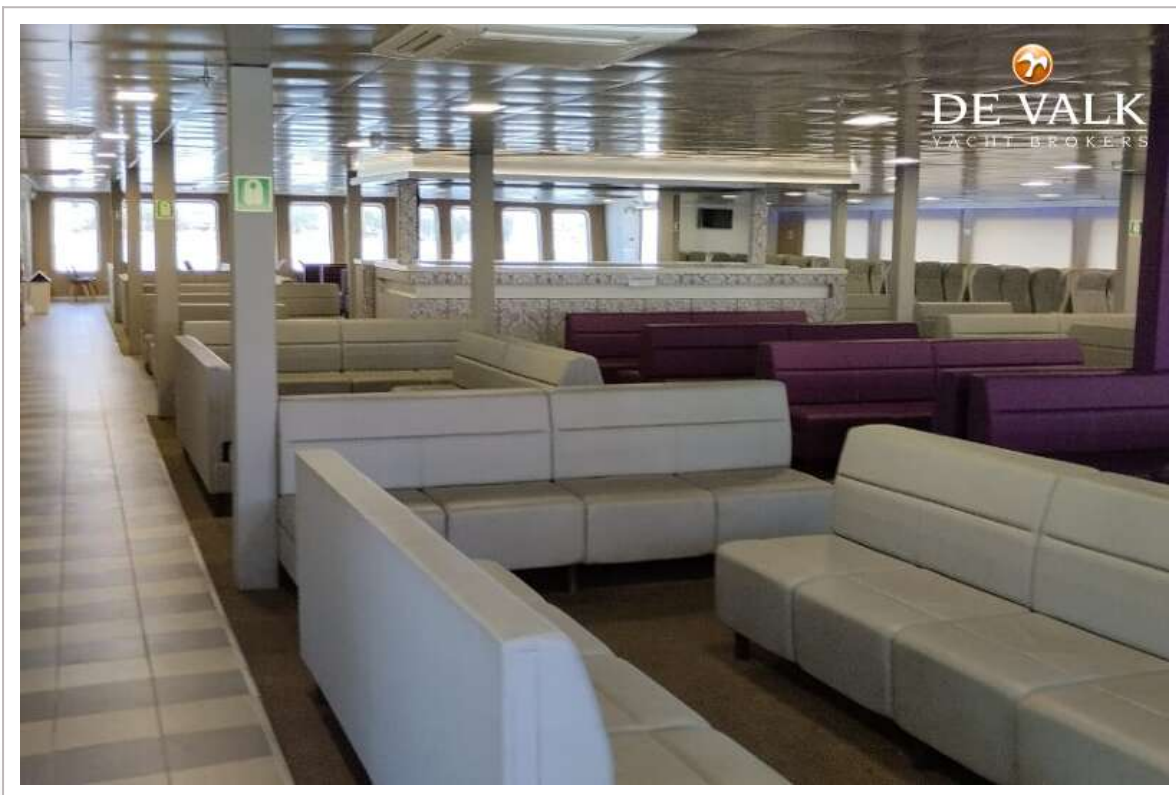
# RO/PAX DOUBLE ENDED FERRY 107 M



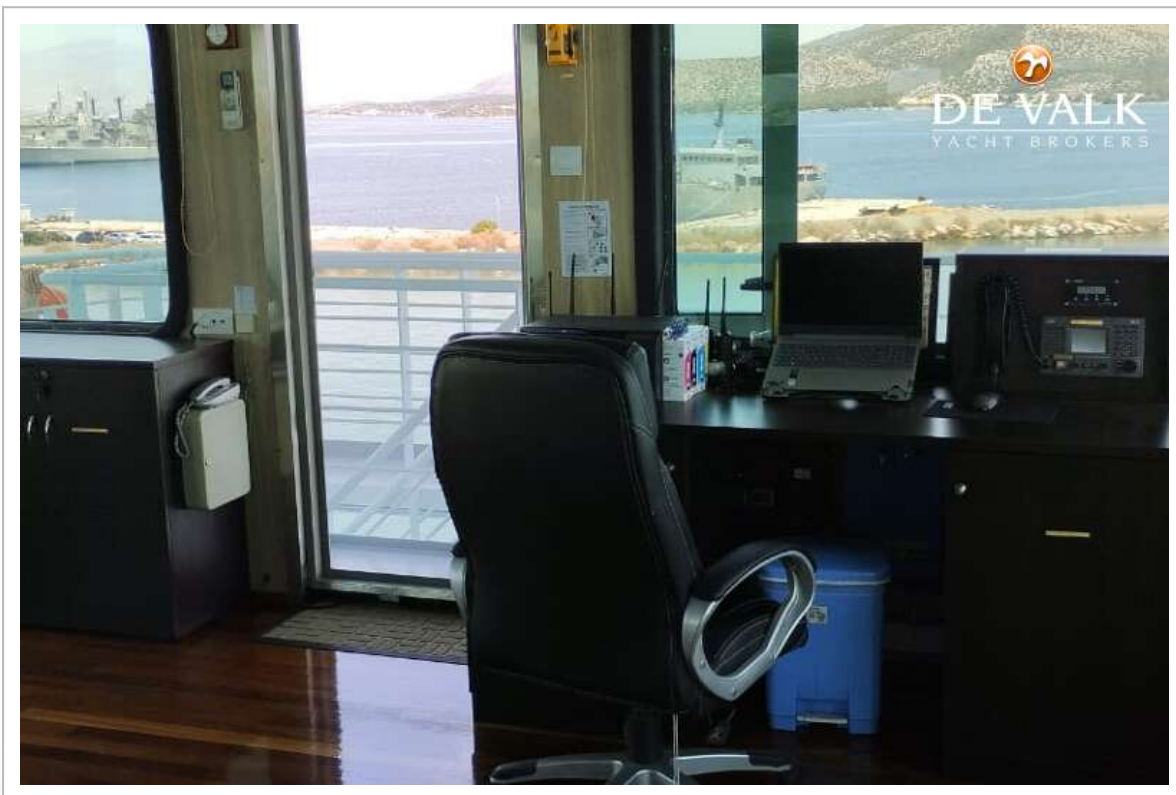
# RO/PAX DOUBLE ENDED FERRY 107 M



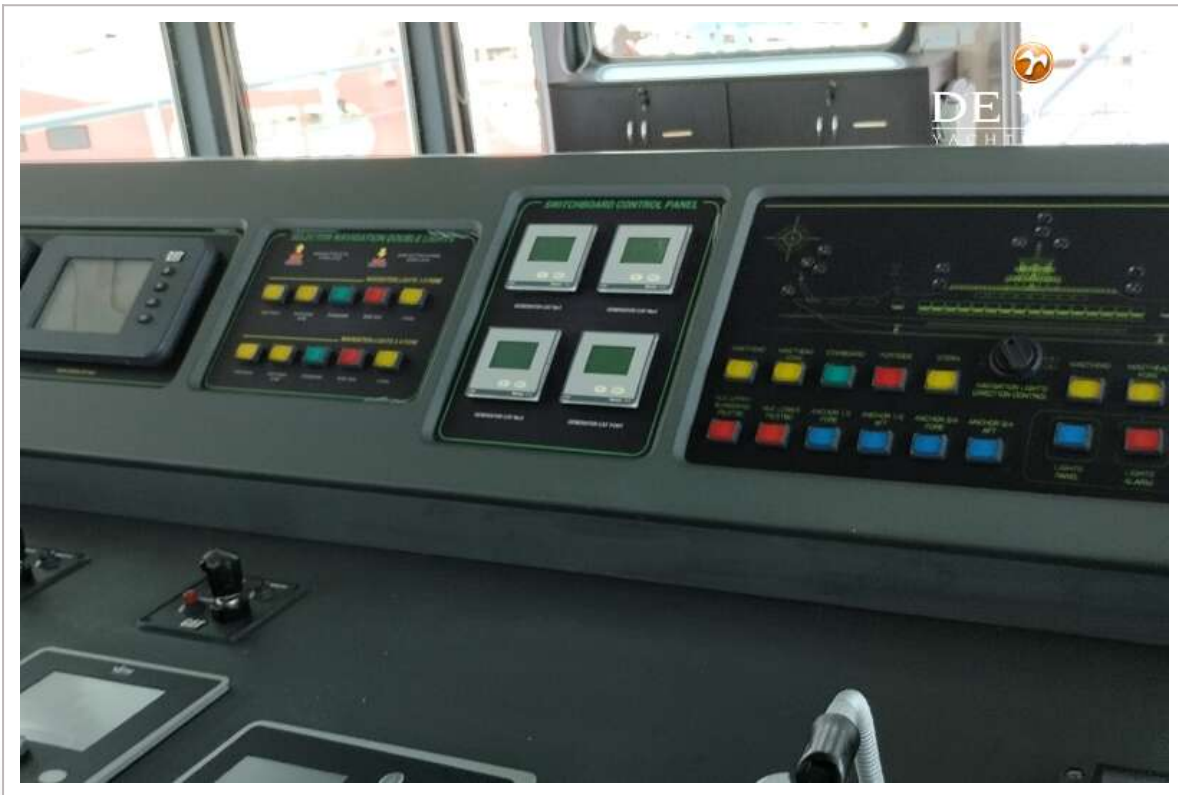
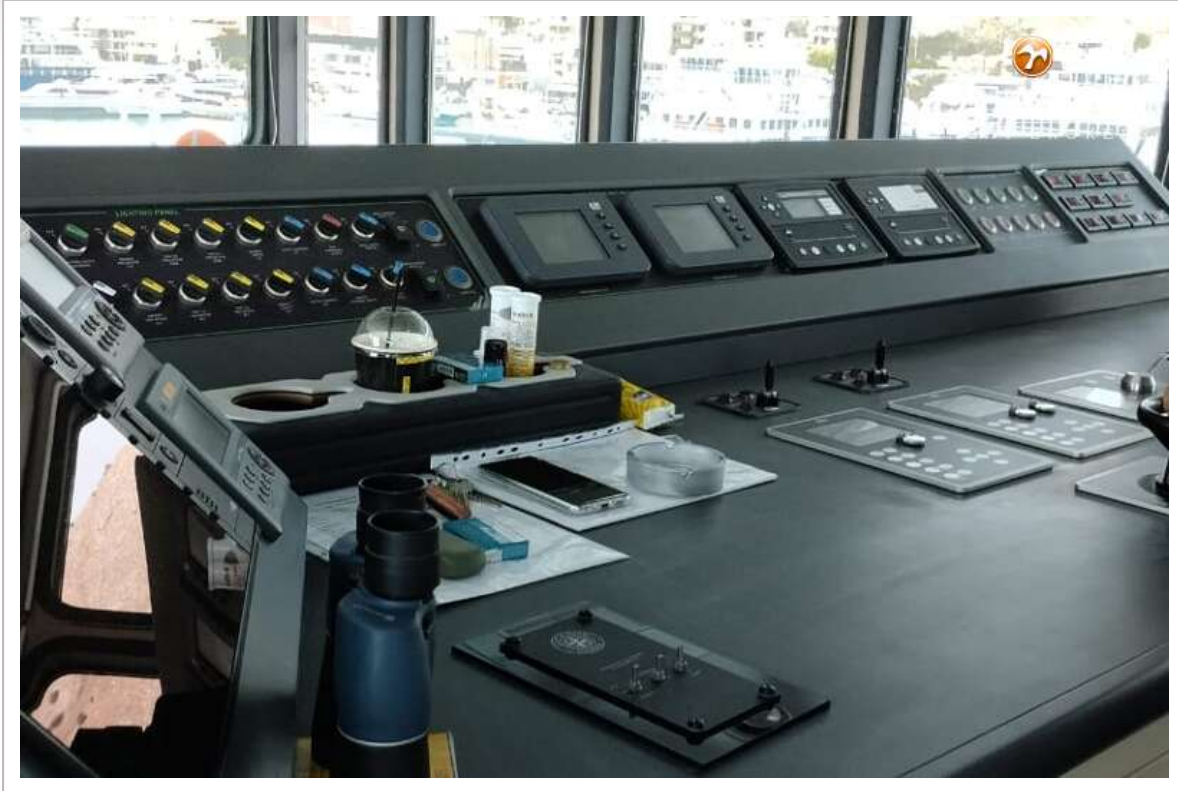
# RO/PAX DOUBLE ENDED FERRY 107 M



# RO/PAX DOUBLE ENDED FERRY 107 M



# RO/PAX DOUBLE ENDED FERRY 107 M

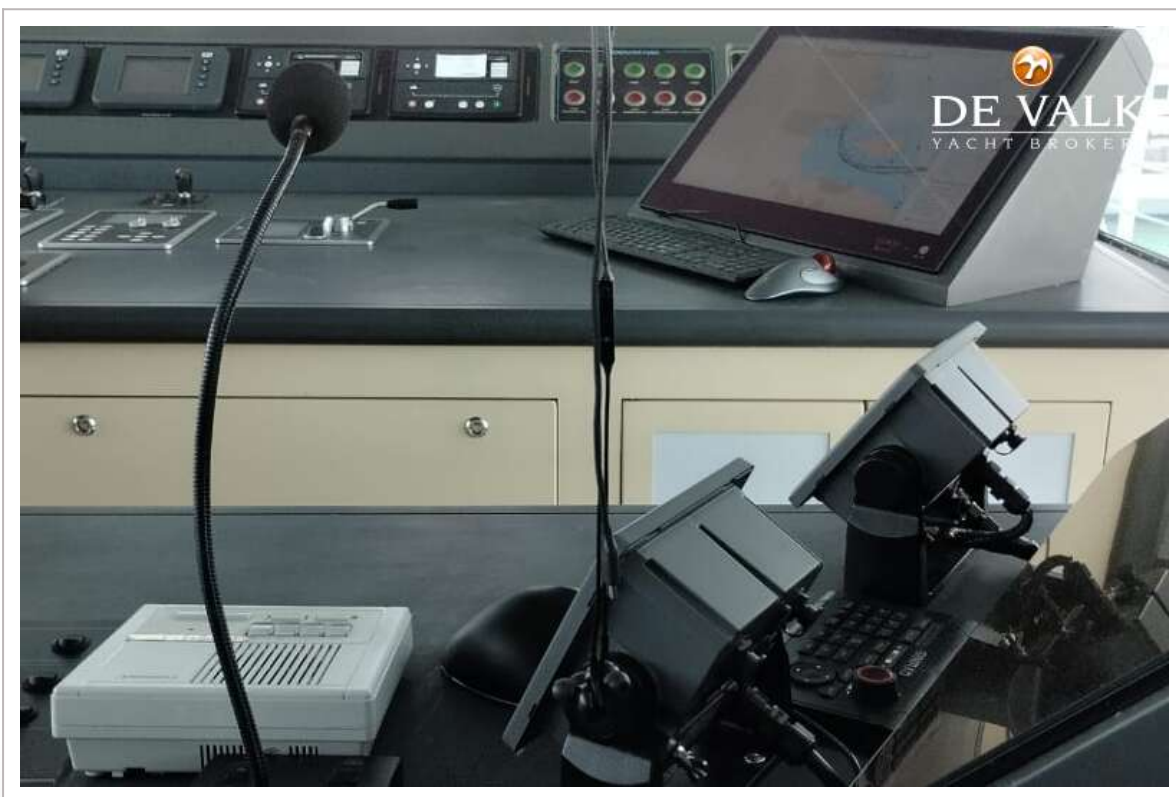




# RO/PAX DOUBLE ENDED FERRY 107 M



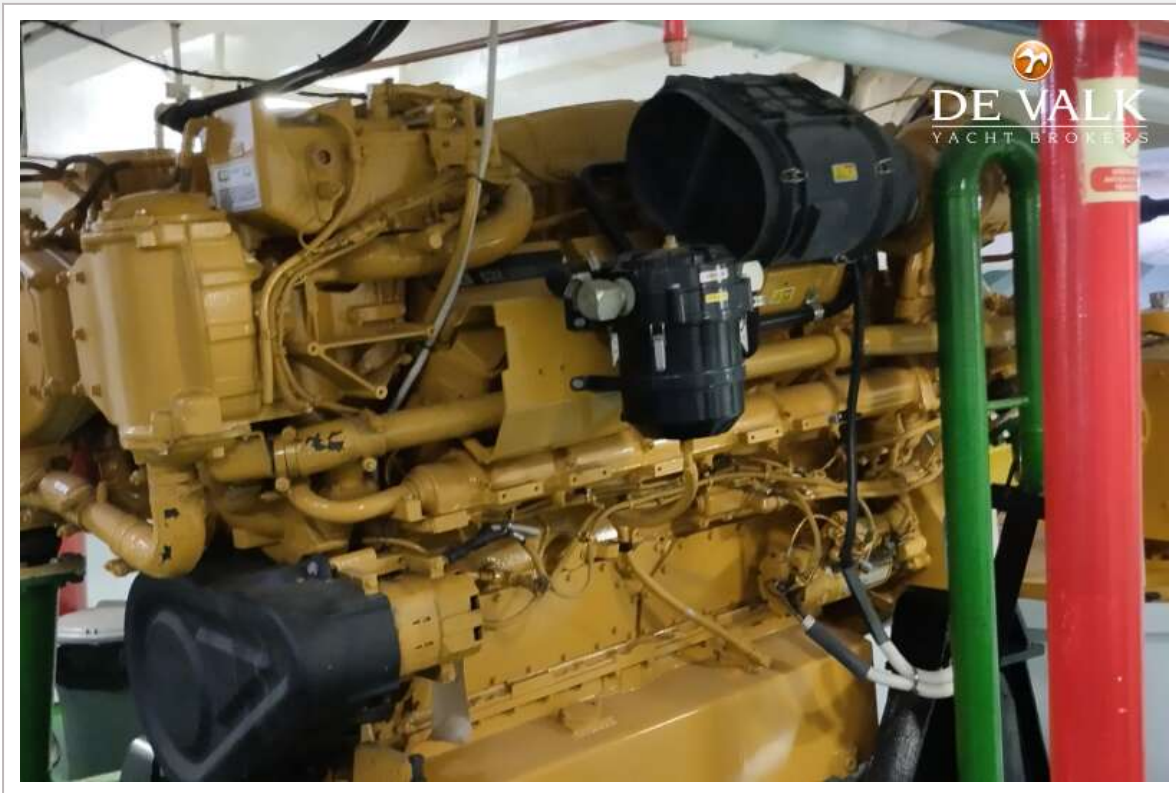
# RO/PAX DOUBLE ENDED FERRY 107 M



# RO/PAX DOUBLE ENDED FERRY 107 M

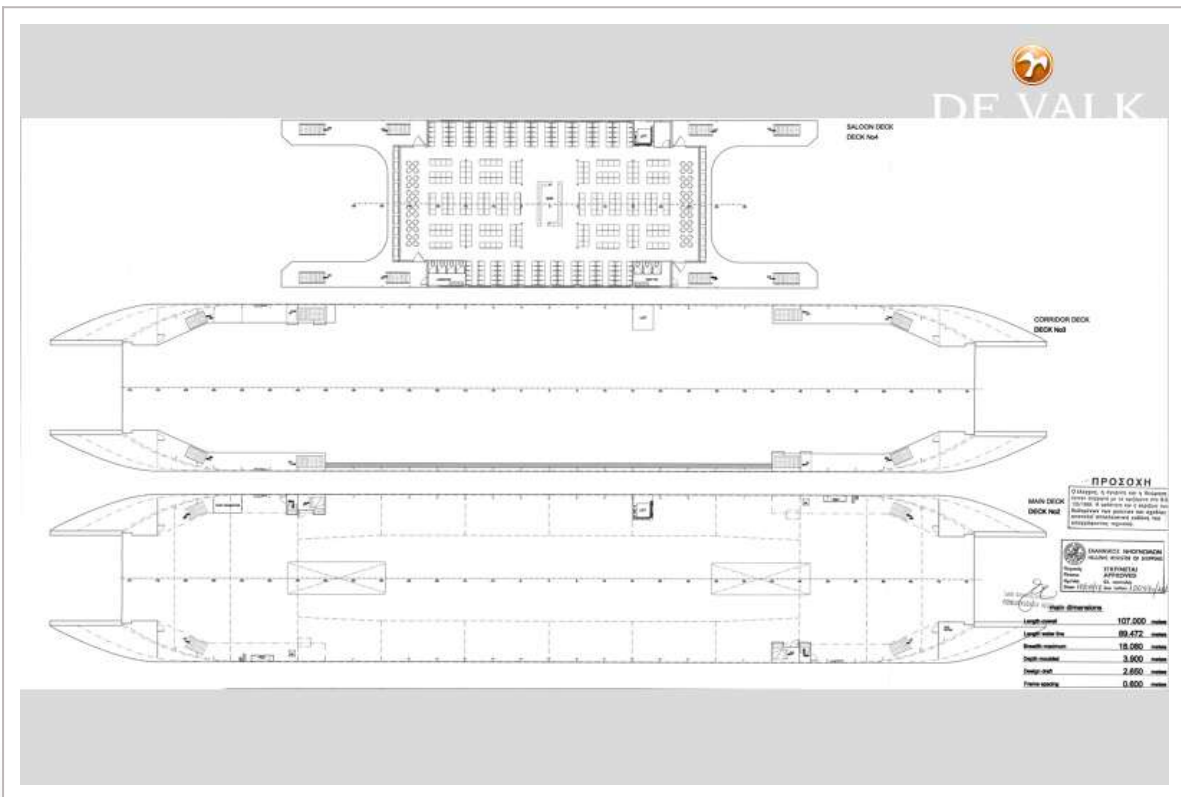
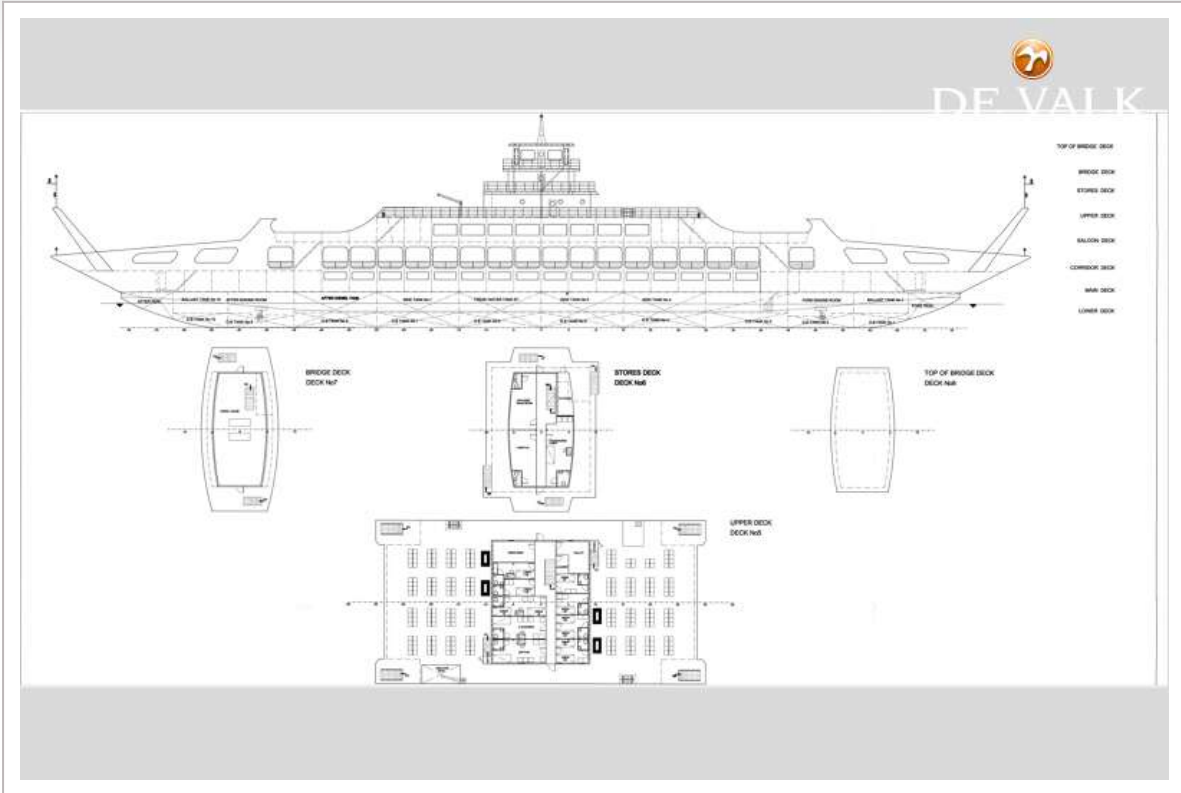


# RO/PAX DOUBLE ENDED FERRY 107 M





# RO/PAX DOUBLE ENDED FERRY 107 M



# RO/PAX DOUBLE ENDED FERRY 107 M

