



DE VALK
YACHT BROKERS



SWEDEN YACHTS 50



DE VALK
YACHT BROKERS

KOMMENTARE DES MAKLERS

The Sweden Yachts 50 is a timeless classic that not only out-sails most others but also offers a lot of comfort. SY Fragancia is the boat for those who want top-tier quality and craftsmanship. This is a fast and luxurious ocean cruiser, perfect for long trips, holiday sailing, or even as a liveaboard. Fragancia has been heavily upgraded in recent years. Ask for detail specification list. Vat is paid in Norway, to register the boat in EU, Vat shall be paid again in that country. The boat is located in Oslo, Norway, ready to sail.

Per Engdahl

TECHNISCHE DATEN

Maße	15.25 x 4.35 x 2.00 (m)	Werft	Sweden Yachts
Baujahr	1990	Kabinen	3
Material	GFK	Kojen	6
Motor(en)	1 x Volvo Penta TMD31B diesel	PS/kW	100.00 (PS), 73.60 (kW)
Verkaufspreis	€ 170.000 (MwSt. Bezahlt)	Liegeplatz	contact sales office

KONTAKT

Verkaufsbüro	De Valk Sweden	Telefon	+46 72 358 50 74
Adresse	Throughout Sweden Sweden	E-Mail	sweden@devalk.nl

HAFTUNGS AUSSCHLUSS

Diese Angaben erfolgen nach bestem Wissen, können jedoch nicht garantiert werden.



SWEDEN YACHTS 50

ALLGEMEIN

Modell	SWEDEN YACHTS 50
Typ	Segelyacht
Rumpflänge (m)	15,25
Breite (m)	4,35
Tiefgang (m)	2,00
Durchfahrtshöhe (m)	22,00
Stehhöhe (m)	2,00
Baujahr	1990
Werft	Sweden Yachts
Land	Schweden
Entwerfer	Peter Norlin & Jens Östmann
Gewicht (t)	14,5
Ballast (Ton)	6
CE Norm	A
Rumpfmateri al	GFK
Rumpffarbe	White
Art Kiel	Wing keel
Material Aufbauten	GRP
Deckmaterial	GRP
Deck Finish	Teak
Deck Finish Aufbauten	Teak
Pflicht Bedeckung	Teak
Antifouling (Jahr)	2024, Six layers epoxy + 5 layers of copper coat
Decksluke	ja
Treibstofftank (Liter)	530
Trinkwassertank (Liter)	700
Fäkaelien Tank (Liter)	50
Radsteuerung	ja
Aussen Steuerung	ja



UNTERKUNFT

Kabinen	3
Kojen	6
Innen	Teak/Mahogany
Fussboden	Teak
Salon	ja
Standhöhe Salon (m)	2
Heizung	ja
Navigation Zenter	ja
Kartentisch	ja
Achterkabine	ja
Kombüse	ja
Arbeitsfläche	Corian
Spülbecken	ja
Herd	Three burners
Ofen	ja
Kuhlschrank	2 fridges
Gefrier Truhe	90 l
Warmwasser System	ja
Wasserdruck System	ja
Toilet	ja
Toilette	2 toilets
Toilette System	ja
Dusche	2 bathroom with shower

MASCHINEN

Motoranzahl	1
Marke	Volvo Penta
Typ	TMD31B
PS	100
kW	73.60



Kraftstoffart	Diesel
Installiert im Jahr	2023
Überholung im Jahr	2024
Motorstunden	50
Antrieb	Saildrive

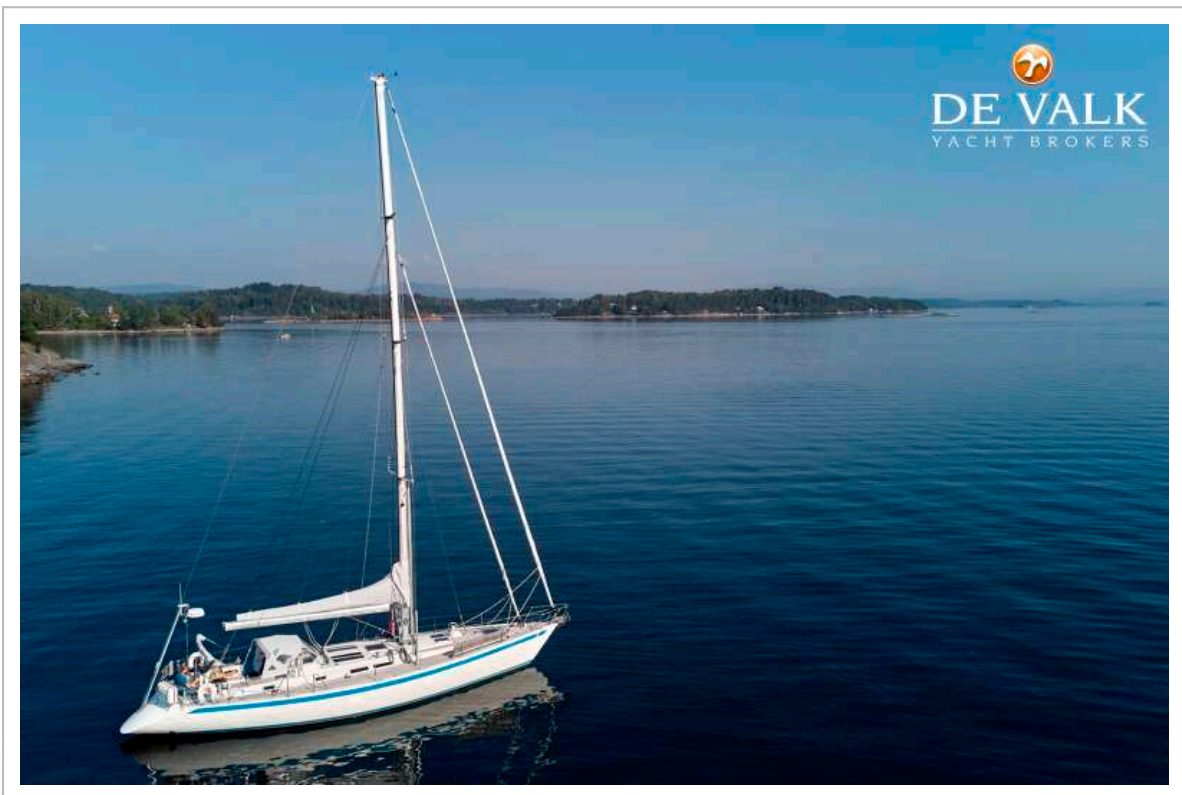
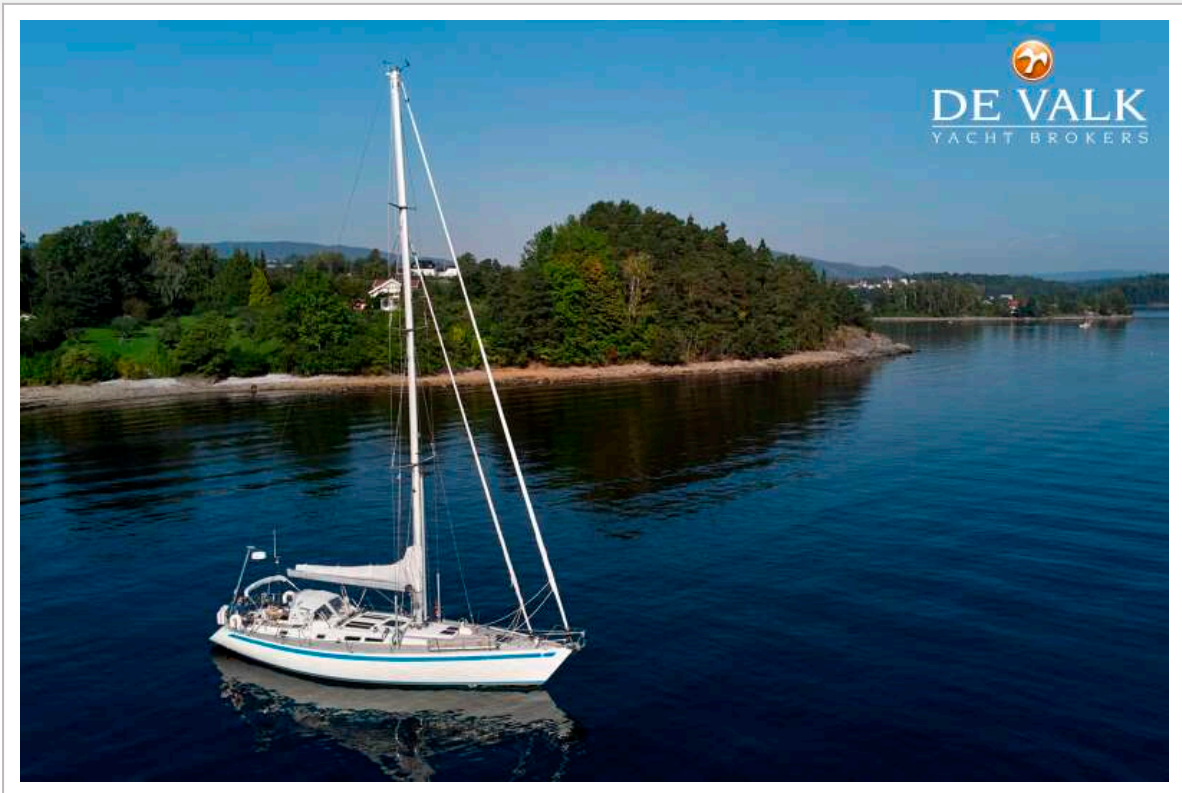
NAVIGATION

Weitere Info	All specifications in separate document
---------------------	---

RIGG

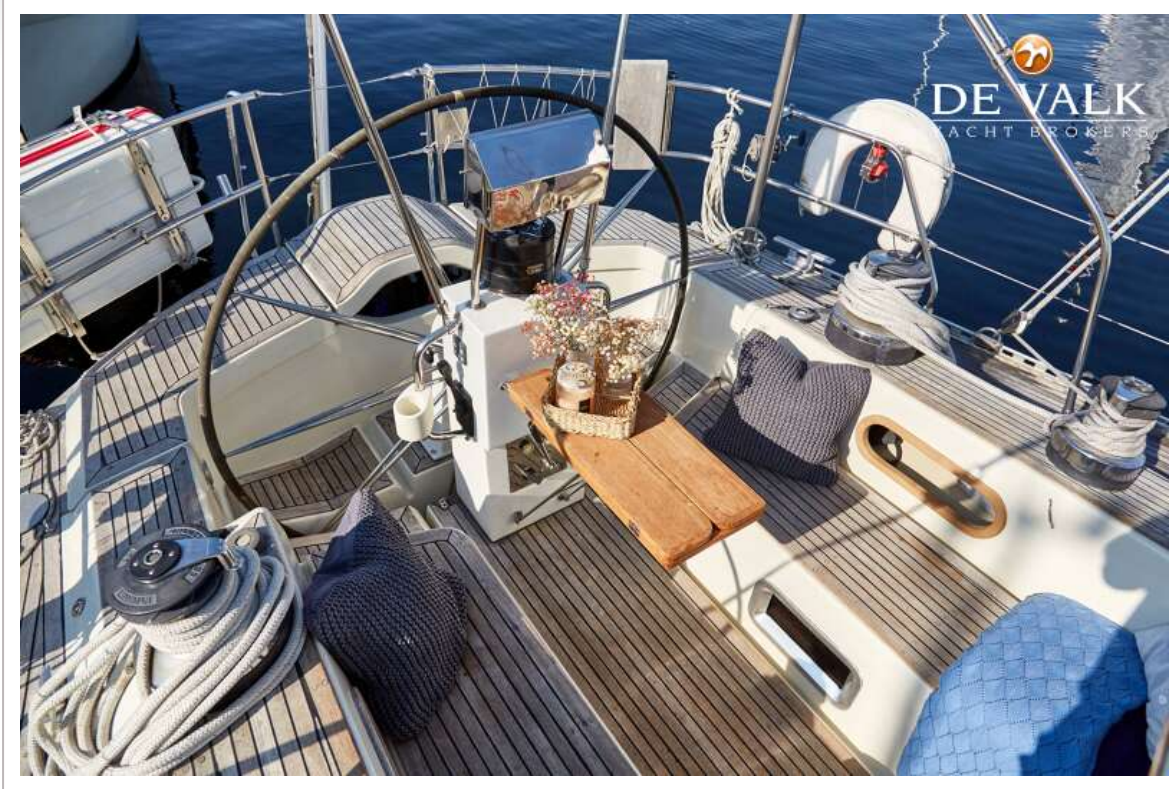
Rig	See separate document
Stehendes Gut	ja
Material Mast	Aluminium
Großsegel	See separate document
Primare Schot Winschen	15 winches ,See separate document







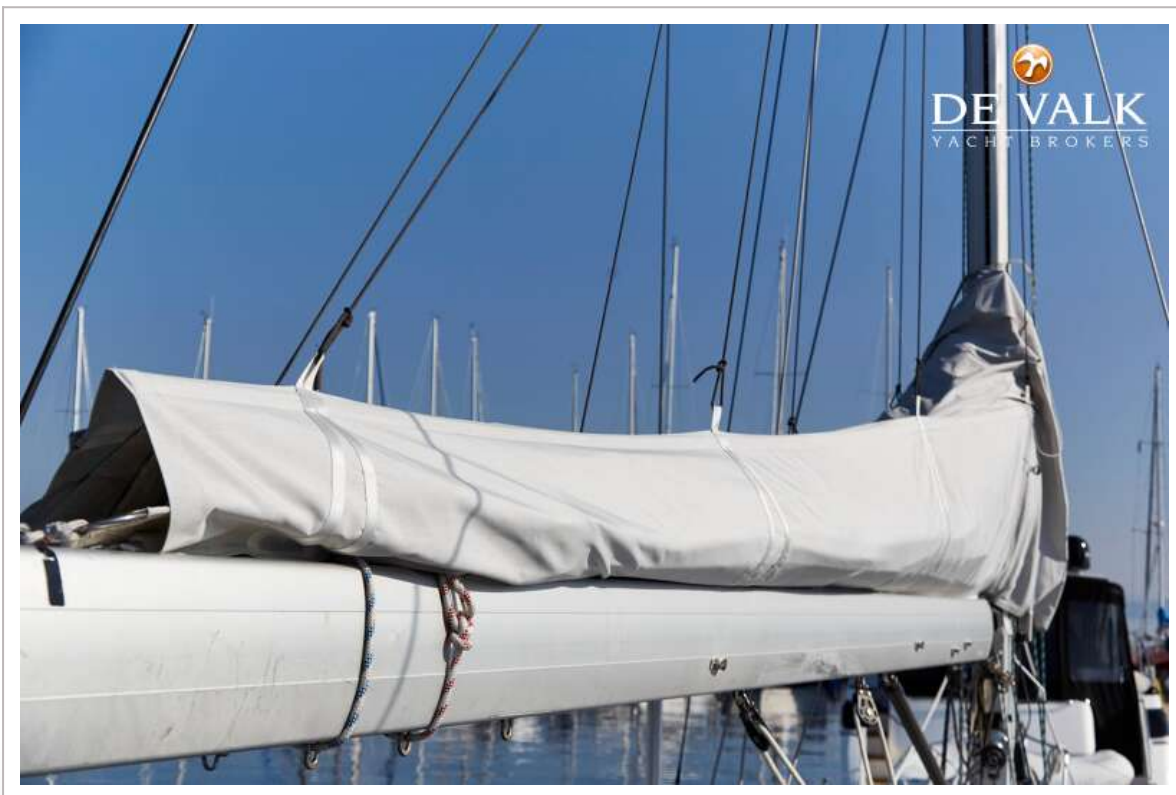
SWEDEN YACHTS 50





SWEDEN YACHTS 50

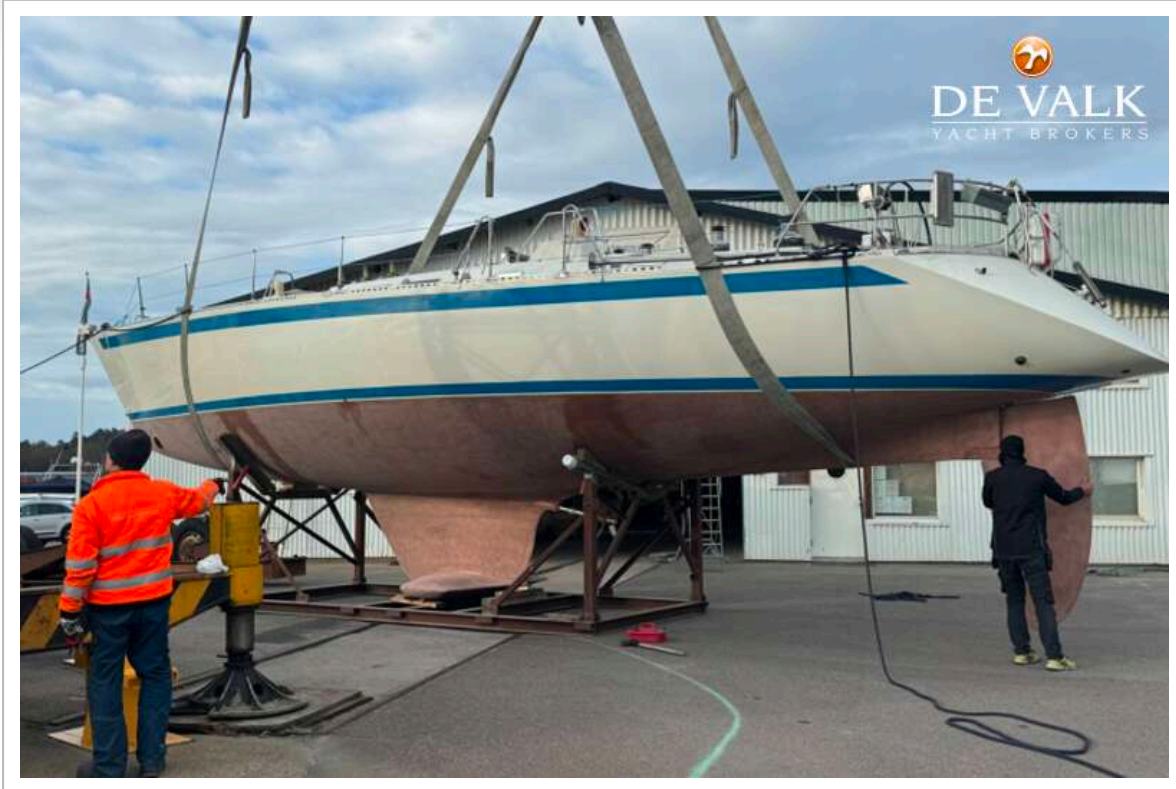




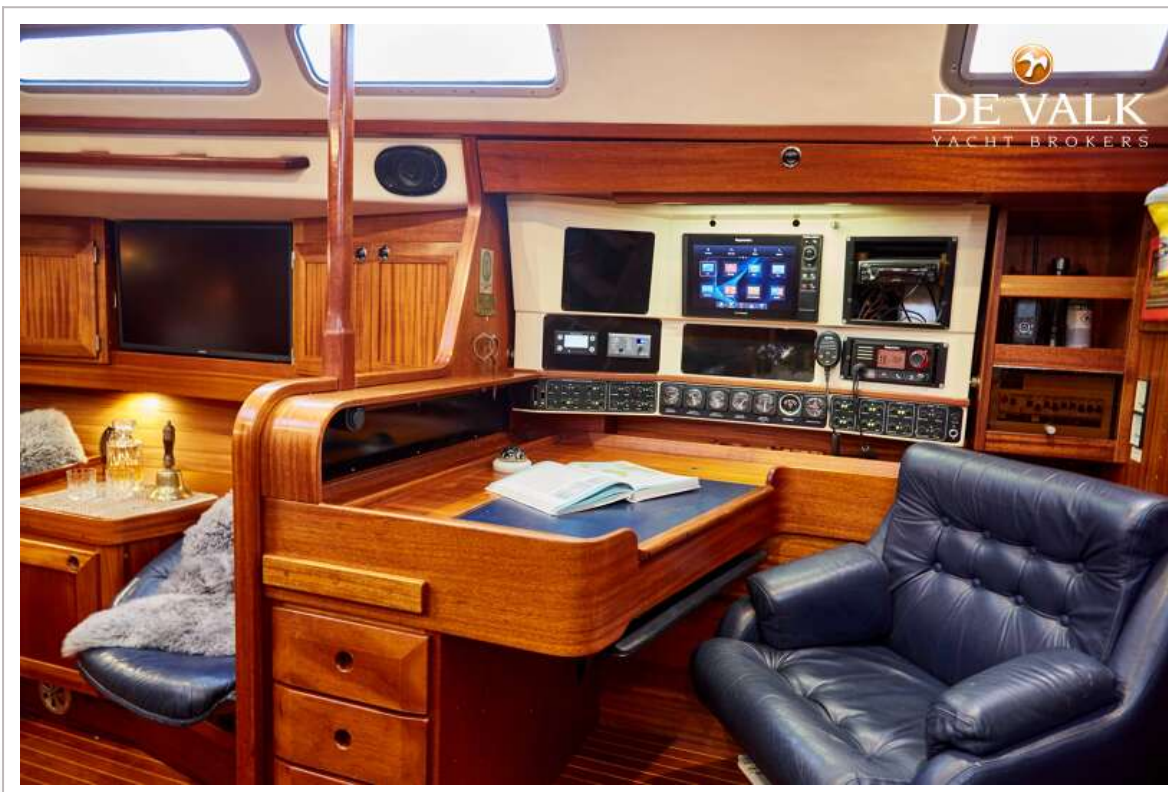




SWEDEN YACHTS 50



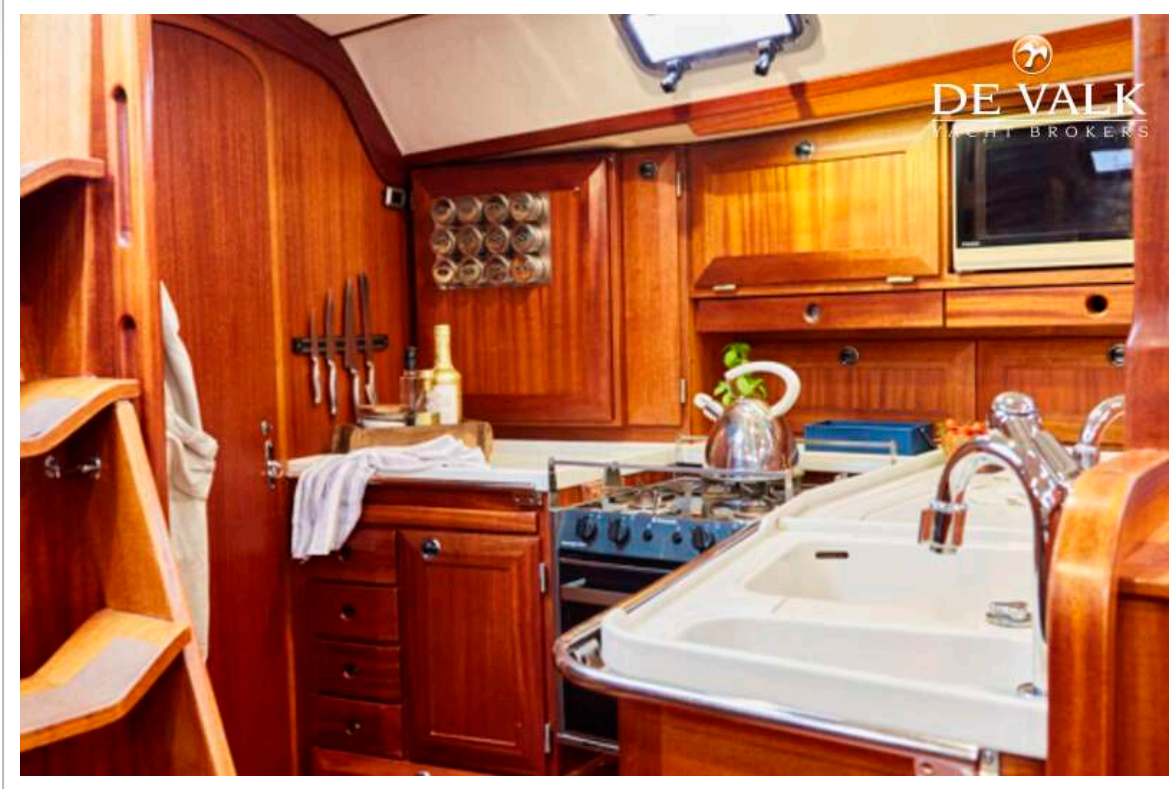
SWEDEN YACHTS 50



SWEDEN YACHTS 50



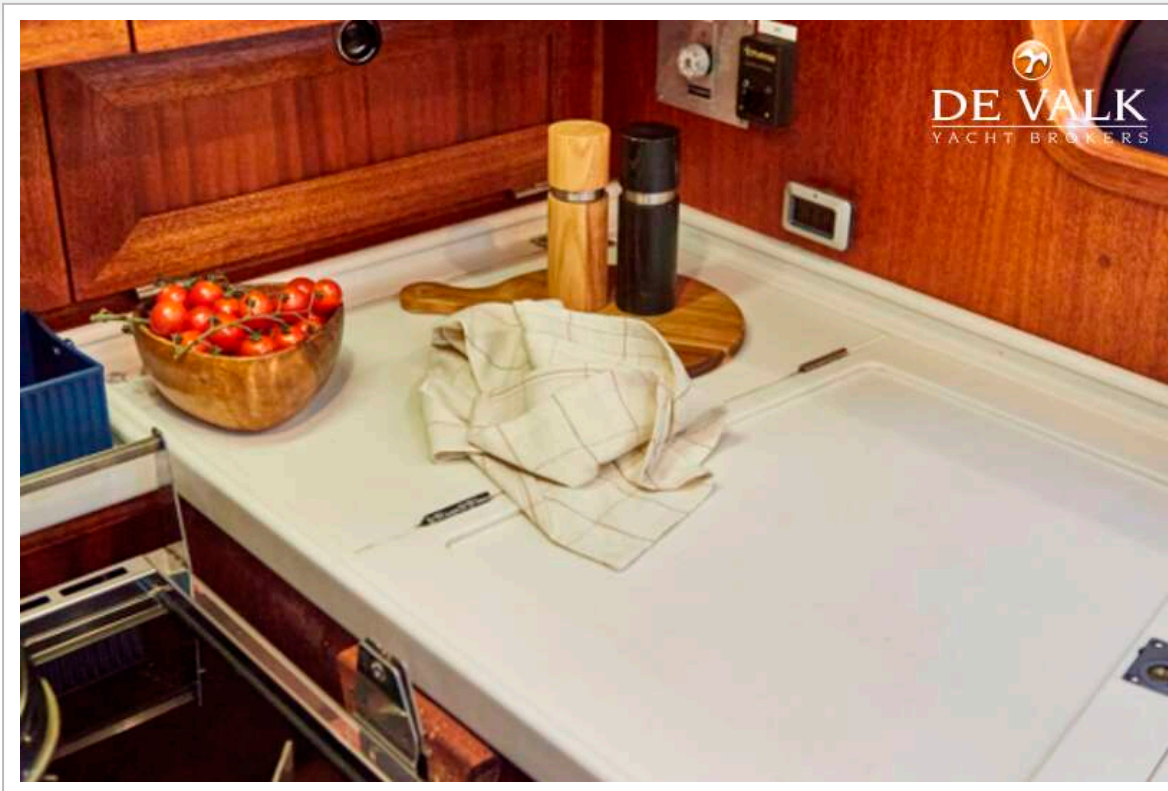
SWEDEN YACHTS 50



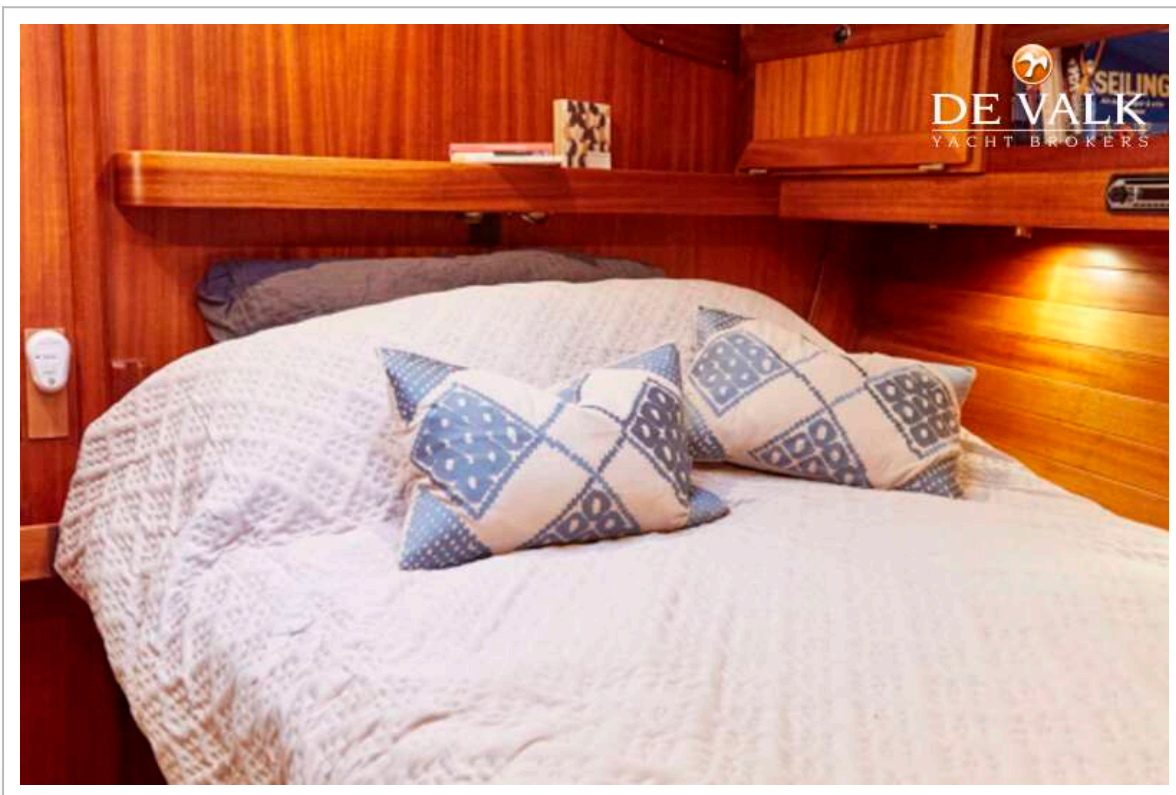
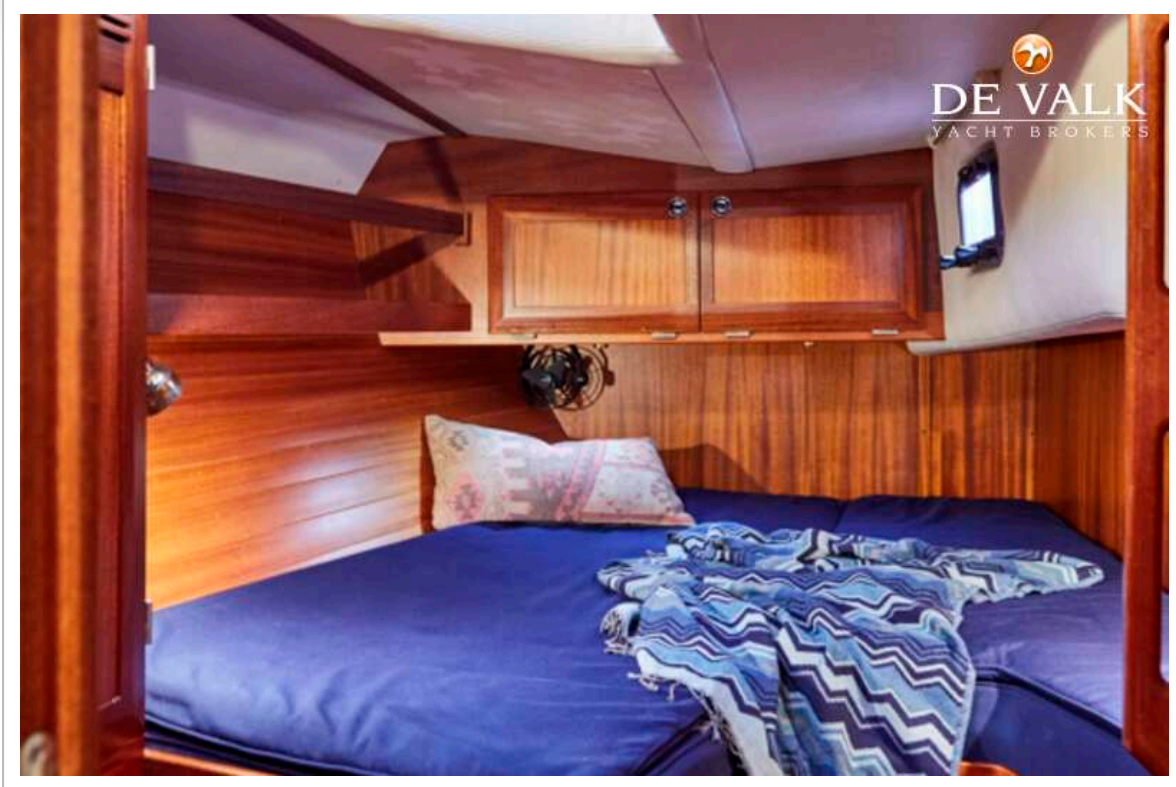
SWEDEN YACHTS 50



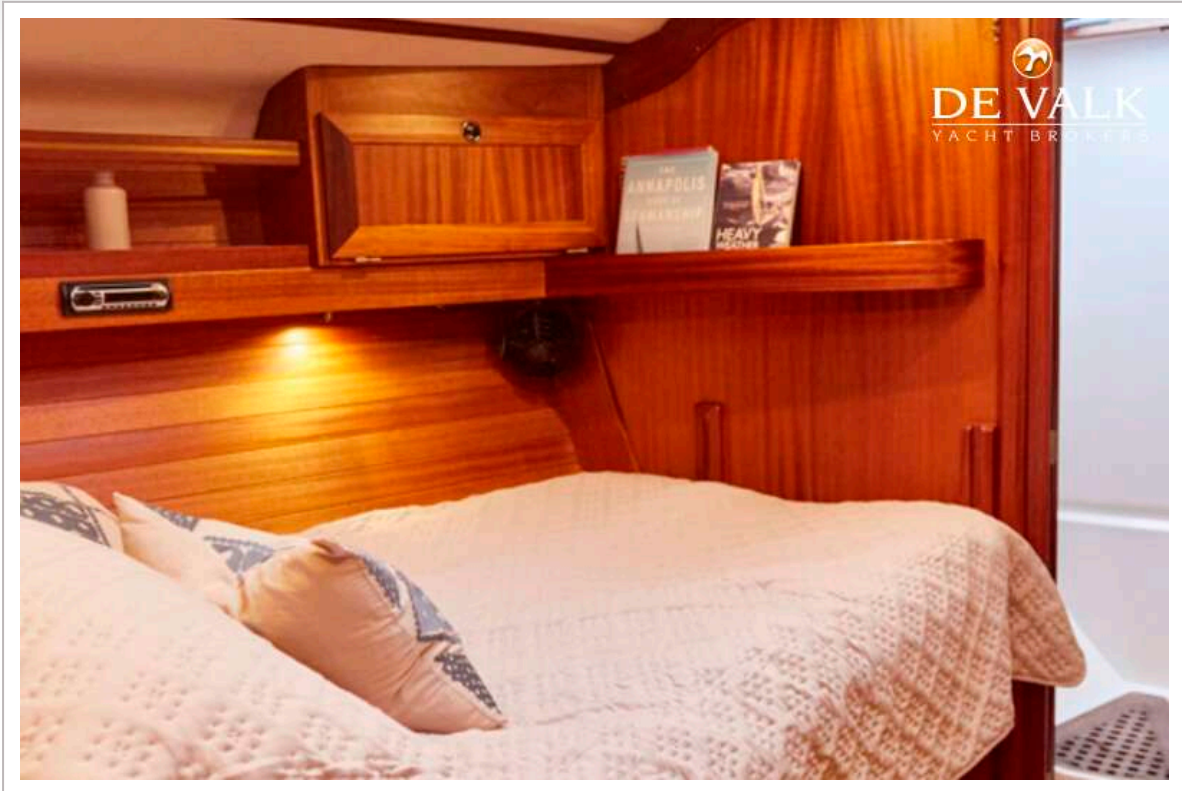
SWEDEN YACHTS 50



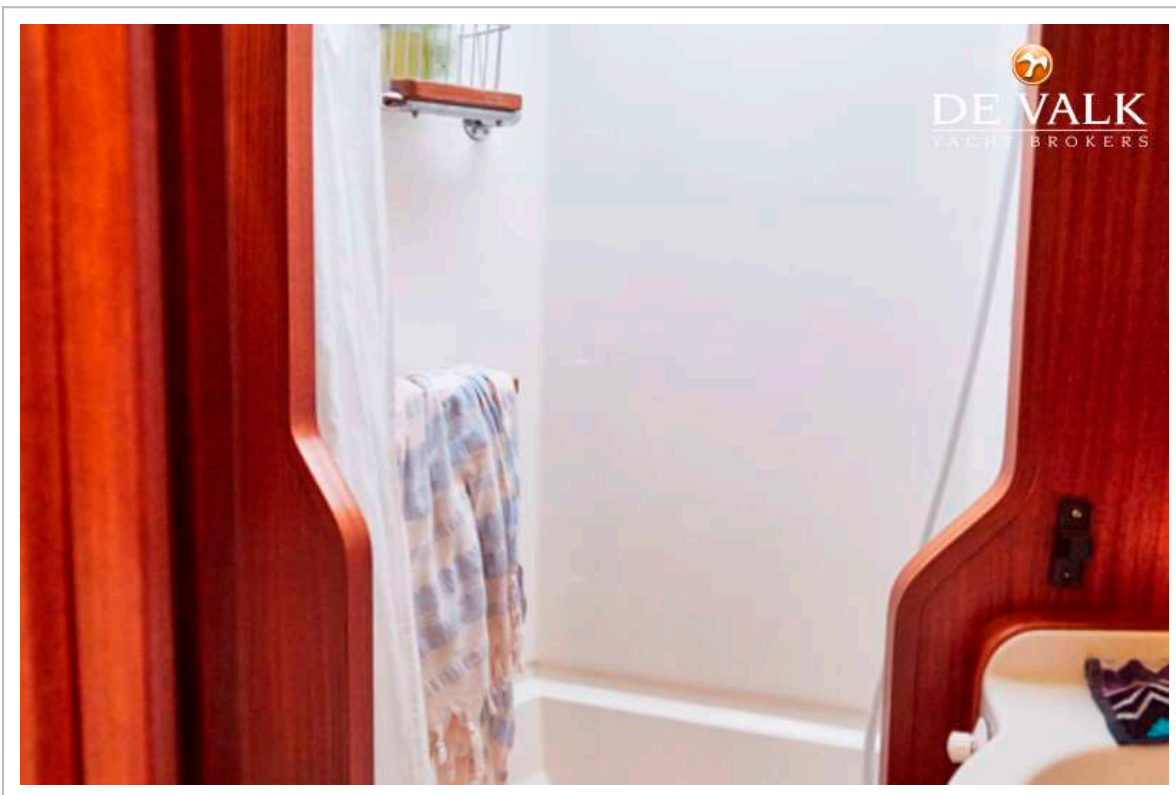
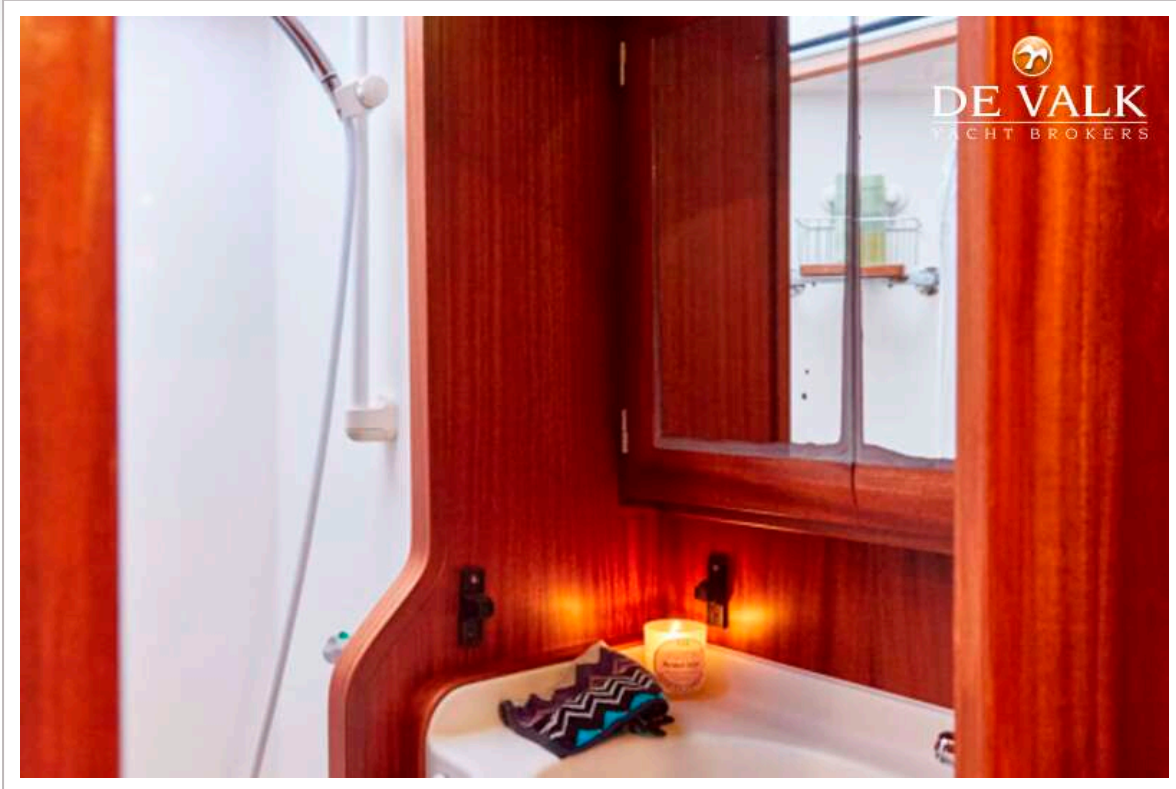
SWEDEN YACHTS 50



SWEDEN YACHTS 50



SWEDEN YACHTS 50



SWEDEN YACHTS 50

