



DE VALK
YACHT BROKERS



AMEL SANTORIN



DE VALK
YACHT BROKERS

KOMMENTARE DES MAKLERS

This Amel Santorin was built by the famous Amel shipyard. It is a hull designed for true lovers of the sea and long-range cruising. This Amel Santorin is excellent for sailing the oceans and for living on board in harmony with the sea. This Amel Santorin is a simple and practical boat, for sailing alone or with the family.

Valerio Biondi

TECHNISCHE DATEN

Maße	13.95 x 3.95 x 1.95 (m)	Werft	Chantiers Amel
Baujahr	1993	Kabinen	2
Material	GFK	Kojen	5
Motor(en)	1 x Perkins Prima M50 diesel	PS/kW	50.00 (PS), 36.80 (kW)
Verkaufspreis	€ 149.000 (MwSt. Bezahlt)	Liegeplatz	contact Antibes

KONTAKT

Verkaufsbüro	De Valk Antibes	Telefon	+33 492 91 0202
Adresse	2, Avenue de Verdun 06600 Antibes France	E-Mail	antibes@devalk.nl

HAFTUNGS AUSSCHLUSS

Diese Angaben erfolgen nach bestem Wissen, können jedoch nicht garantiert werden.



ALLGEMEIN

Modell	AMEL SANTORIN
Typ	Segelyacht
Rumpflänge (m)	13,95
Breite (m)	3,95
Tiefgang (m)	1,95
Baujahr	1993
Werft	Chantiers Amel
Land	Frankreich
Entwerfer	Henri Amel
Gewicht (t)	10
Rumpfmateral	GFK
Rumpffarbe	White
Deckmaterial	GRP
Deck Finish	Teak-like GRP
Pflicht Bedeckung	Teak-like GRP
Antifouling (Jahr)	2024
Decks Luke	Lewmar Ocean hatches
Treibstofftank (Liter)	400
Trinkwassertank (Liter)	800
Radsteuerung	1
Aussen Steuerung	In cockpit
Weitere Info Rumpf	Moderate wing-keel and propeller mounted on "C-drive"
Weitere Info Farbe und Anstrich	Original, never been painted, except for bottom treatment

UNTERKUNFT

Kabinen	2
Kojen	5
Innen	African mahogany
Fussboden	Teak
Ruderhaus	Covered steering position in cockpit, hard dodger (GRP)



Salon	Finished in mahogany
Navigation Zenter	At chart table and at steering position (networked)
Kartentisch	With chart plotter, radios, instruments etc.
Achterkabine	2-3 bunks (port bed can be extended to "queen-size" bunk
Speisezimmer	In saloon. Seating for 6-8 people with extension of saloon table
Kombüse	Fully equipped
Arbeitsfläche	Ceramic tiles
Spülbecken	Large (GRP)
Herd	Both gas and induction (separate 220v unit)
Ofen	Eno 3-burner stove with oven and grill
Kuhlschrank	Large with freezer compartment. Extra compressor cooling box
Gefrier Truhe	In the fridge
Warmwasser System	With hot water tank (Quick, 30 liter)
Wasserdruck System	Cold and warm water
Eignerkabine	ja
Länge Bett (m)	1,90
Badezimmer	ja
Toilet	ja
Toilette System	Manual pump
Handwaschbecken	Very deep (Amel special type in GRP)
Dusche	Integrated in the faucet
Weitere Info	Deep wash bassins - Drying racks- Large wardrobe - Safety box
Gästekabine 1	Front cabin with 2 beds (3 with extension)
Länge Bett (m)	1,90
Toilette	ja
Toilette System	Pump to holding tank (60 liter)
Handwaschbecken	Very deep (Amel special type in GRP)
Dusche	Integrated in the faucet

MASCHINEN

Motoranzahl	1
-------------	---



Marke	Perkins Prima M50
PS	50
kW	36.80
Kraftstoffart	Diesel
Installiert im Jahr	1993
Überholung im Jahr	Checked by professional in 2017
Höchstgeschwindigkeit (Kn)	7
Marschgeschwindigkeit (Kn)	5
Verbrauch (l/h)	3
Motorstunden	3500
Motor bedienung	At steering position
Bugschraube	Amel retractable type
Propeller Typ	Fixed on Amel C-drive
Propellerblätter	3
Generator	Honda EU20i gasolin generator
Betriebsstunden Generator	50
Versorgungsbatterie	4 x 100 Ah Lithium LiFePO4 (installed 2022)
Bugschraubebatterie	100 Ah lead-acid in fore cabin
Batterie Ladegerat	3 x Victron (2 with Bluetooth control, 1 for starter battery)
Umwandler	Victron 1.600 watt (combined with charger)
Wasserbereiter	Schenker 30l/h (barely used)
Weitere Info	Spareseely used typically for 2-3 months a year
Weitere Info	Engine room with access to most technical equipment

NAVIGATION

Kompass	Plastimo at steering position
Tiefenanzeige	With sonar/fisfinder (both chartplotters has sonar built in)
Tochter anzeige	At steering position
UKW	Fixed 25-watt iCom M505 VHF-SRC
Portabel UKW	ICom 5-watt (floating and with light)
Autopilot	2 (Raymarine, Garmin Reactor 40 installed in 2024)



Radar	Garmin Phantom doppler color radar (2017)
Plotter/GPS	2 (Garmin 7412XSV 12-inch and Garmin 7416XSV 16-inch)
AIS Transponder	Garmin AIS 600 in boats network
Epirb	Registered in Denmark, to be replaced

AUSRÜSTUNG

Spritzverdek	ja
Bimini	ja
Cockpit Polster	ja
Cockpit Tisch	ja
Gangway	ja
Anker	Rocna 25kg and a Fortress with lead robe
Ankerkette	80 meters of 8mm chain
Ausserborder	2 (Suzuki 6hp(2018) and Suzuki 20 hp (2017)
Sicherheitsleine auf Deck	Welded stainless steel all around the boat
Fenderkissen	ja
Festmacher	ja
TV	28-inch full-HD with DVD-player and USB
Radio	ICom GMDSS SSB-radio (100 watt) with data modem etc.
Radio-CD Spieler	At nav table, with USB and Bluetooth, 4 x 50 watt
DVD Spieler	In the TV
Lautsprecher im Pflicht	New from 2022
Lautsprecher im Salon	B&W high quality speakers with subwoofer

RIGG

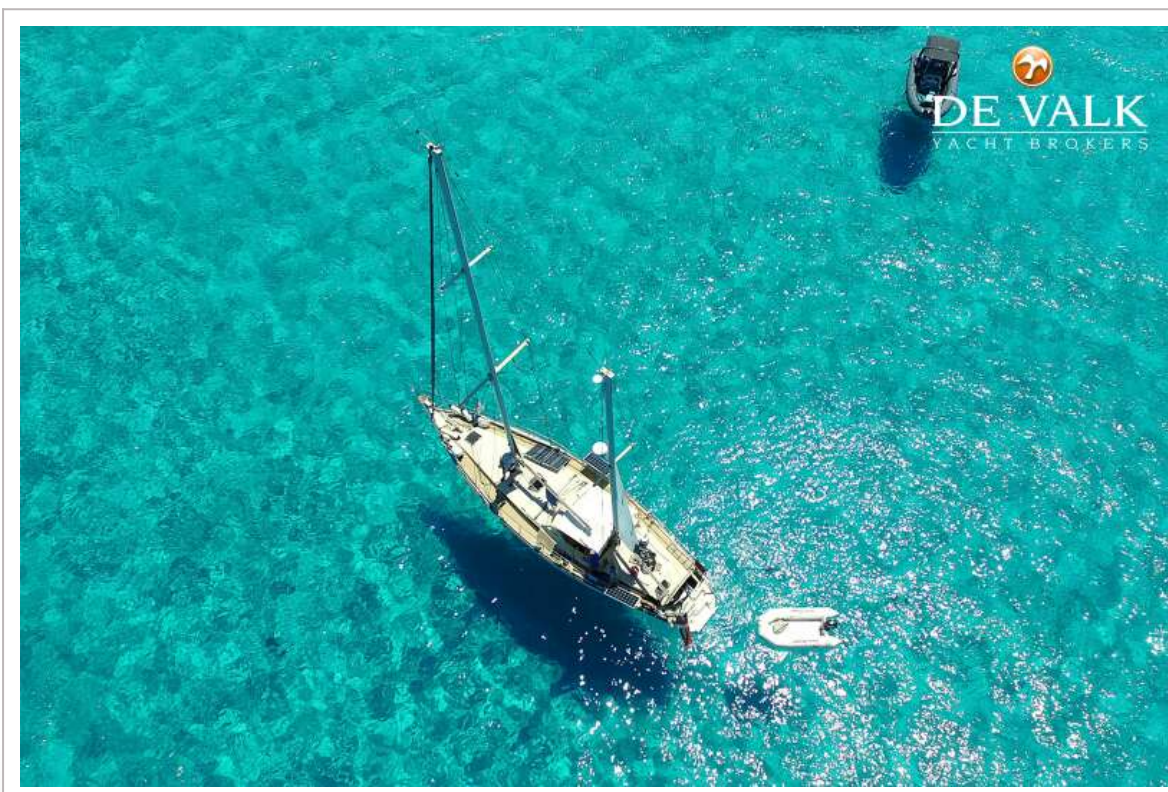
Rig	Ketch rig
Marke Mast	Nirvana Masts (Amel)
Material Mast	Aluminium, painted white (original paint)
Großsegel	Quantum, from 2017
Durchelatted großsegel	Vertical battens for in-mast furling
Genua	Quantum, from 2017. With foam in leading edge



Gennaker	Amel system with double poles
Stagesegel	Amel staysail/mini gennaker to be set between masts
Sturmfock	Quantum (from 2017, never used)
Primare Schot Winschen	Lewmar self-tailing 52
Weitere Info	All 11 winches are Lewmar and 9 are self-tailing
Weitere Info	All winches are kept well maintained



AMEL SANTORIN



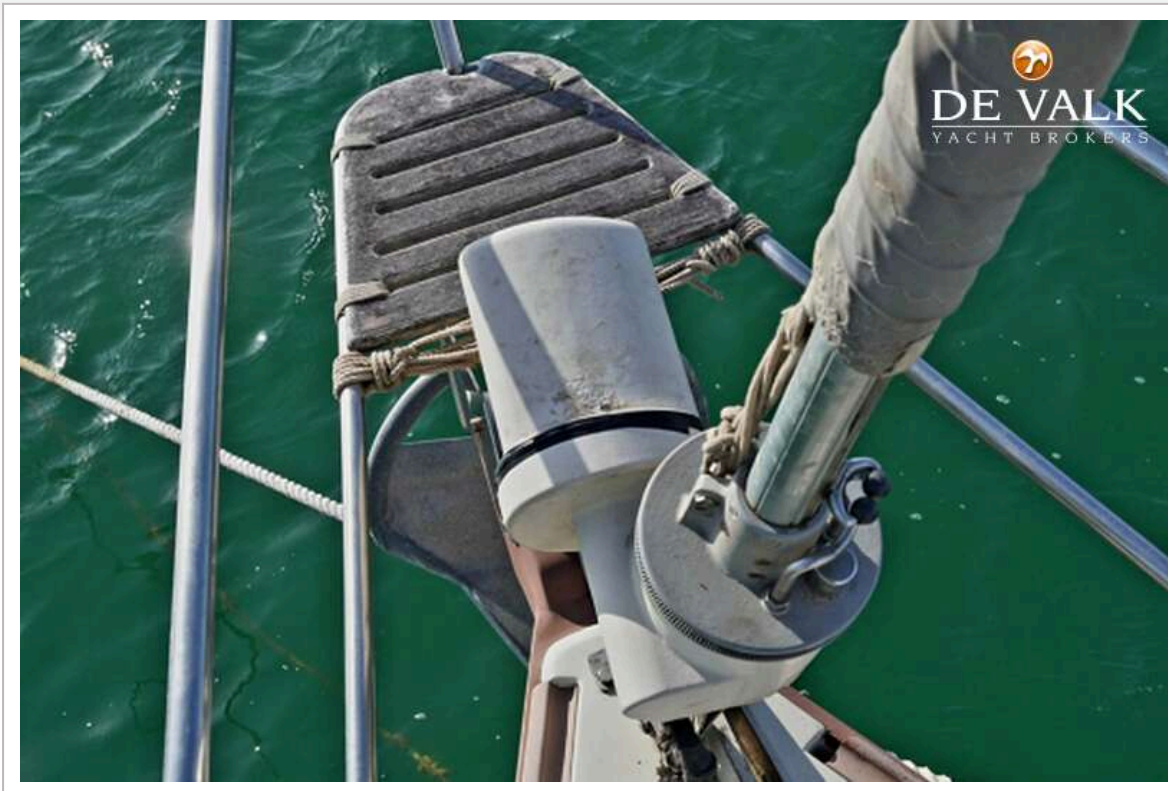
AMEL SANTORIN



AMEL SANTORIN



AMEL SANTORIN

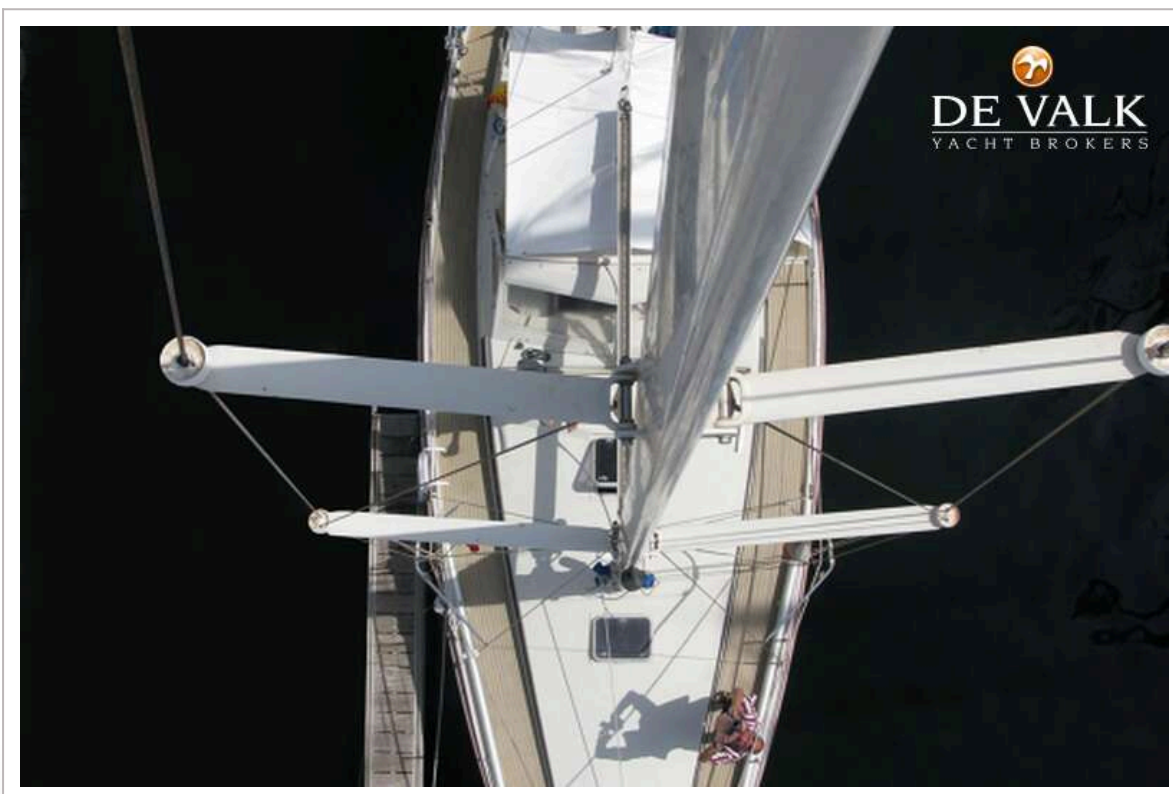


AMEL SANTORIN





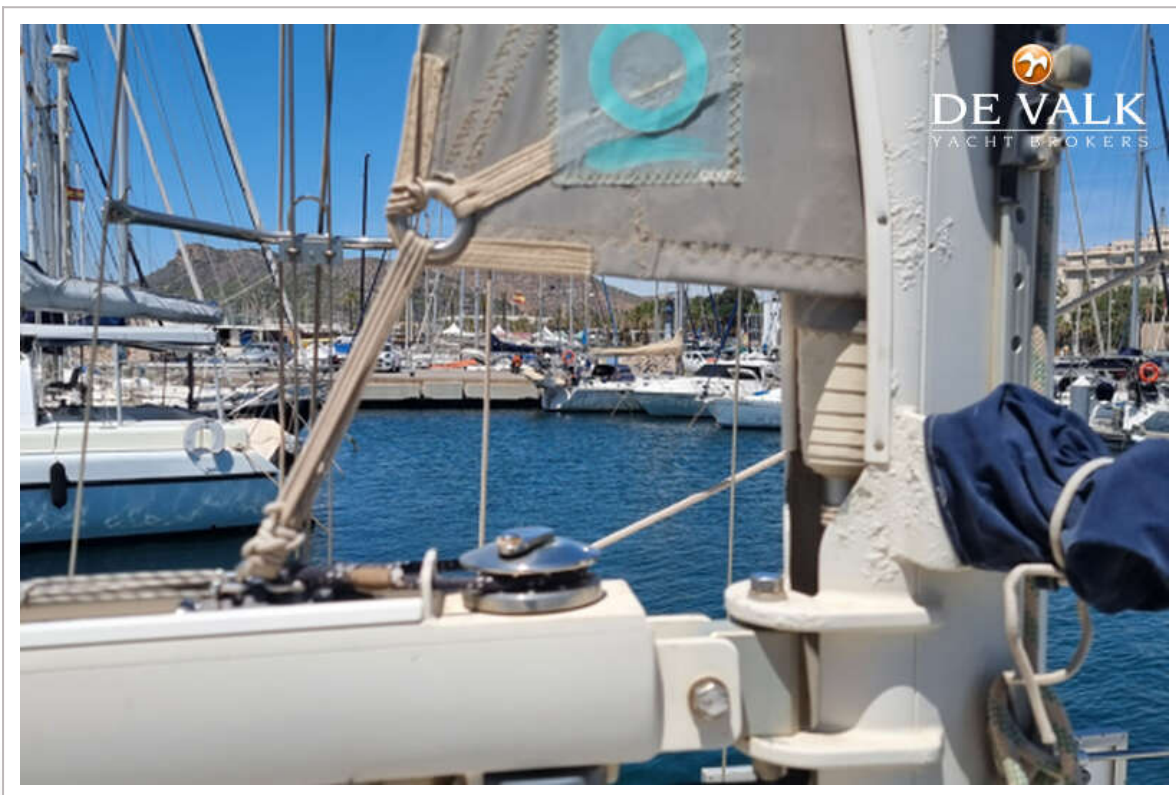
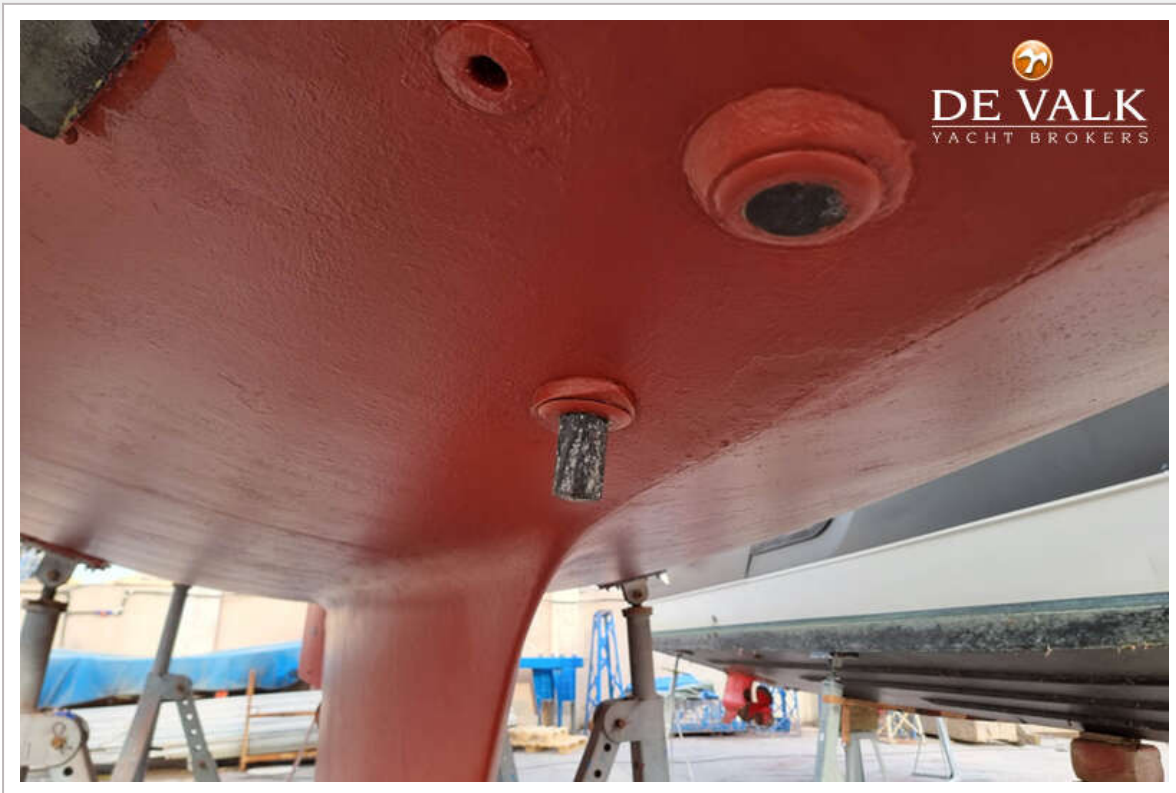
AMEL SANTORIN



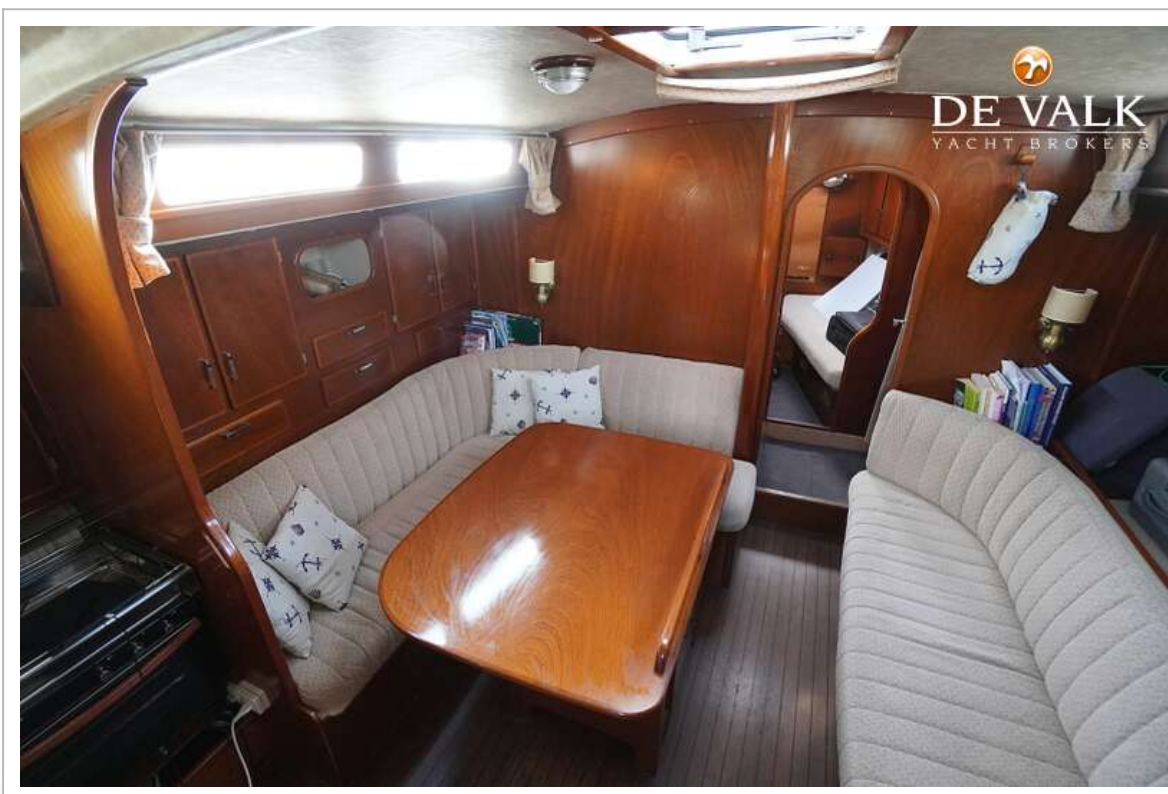
AMEL SANTORIN



AMEL SANTORIN



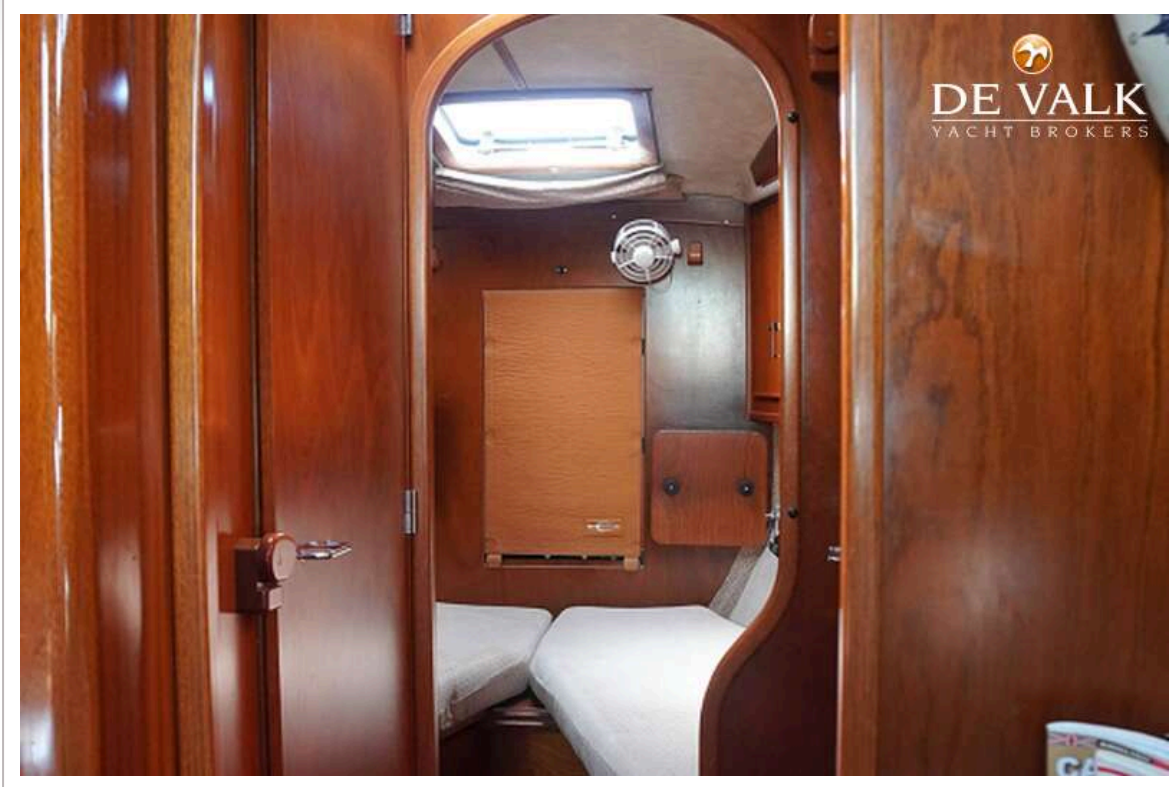
AMEL SANTORIN



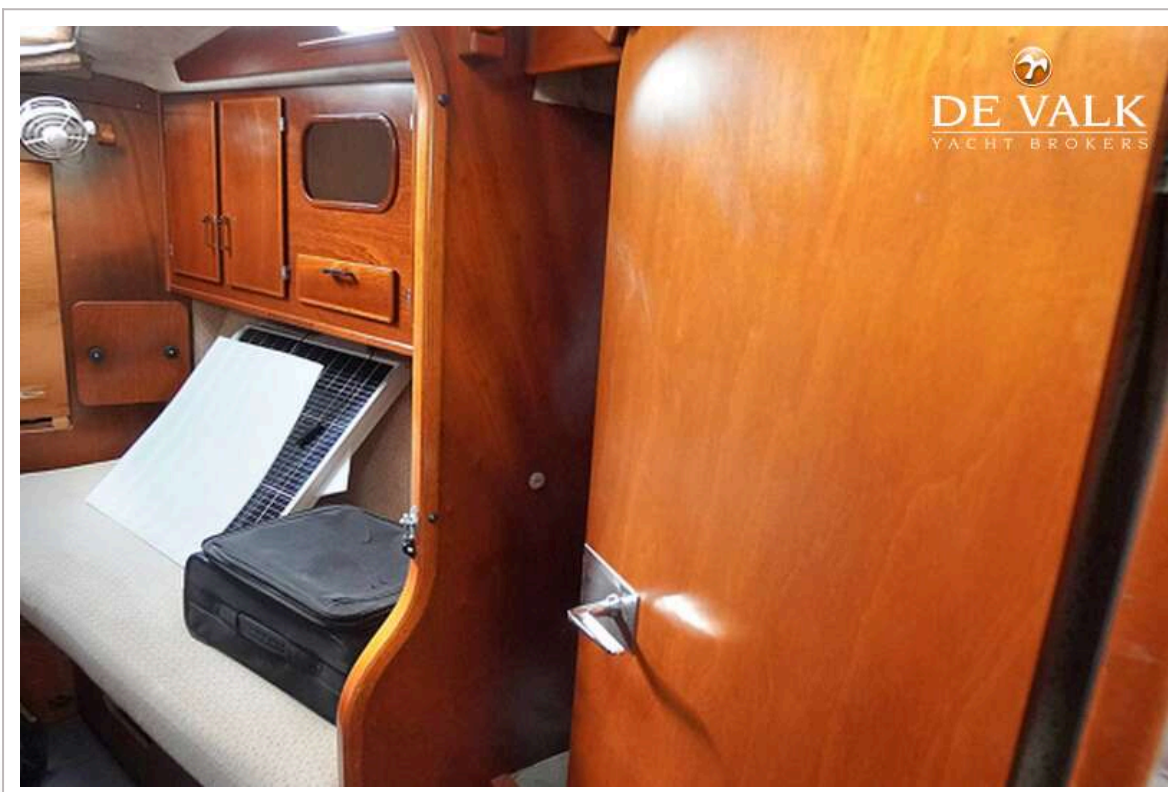
AMEL SANTORIN



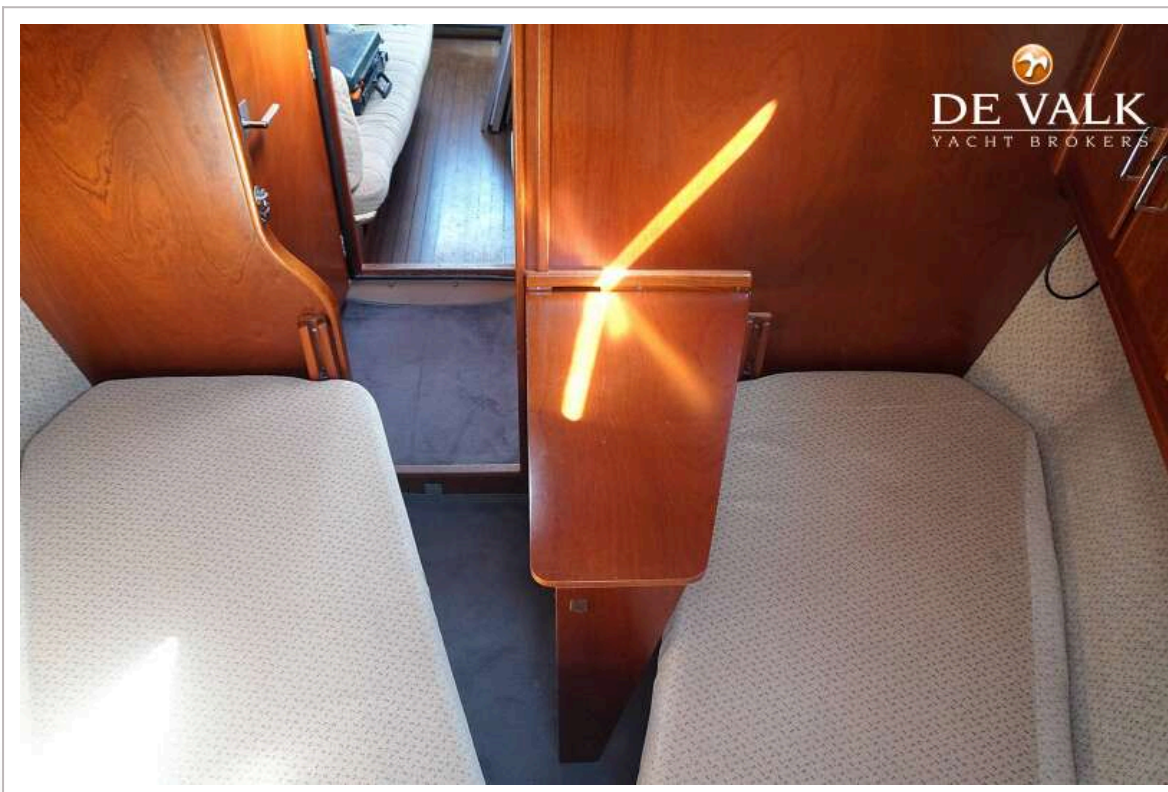
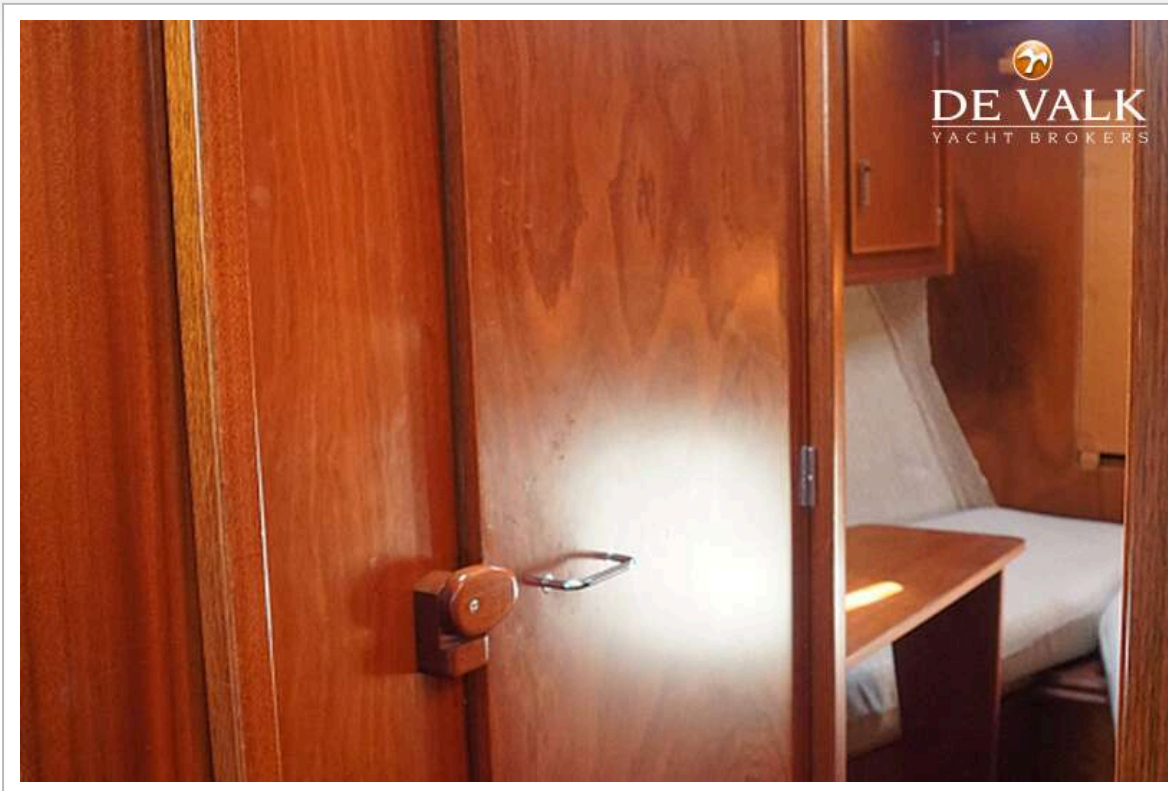
AMEL SANTORIN



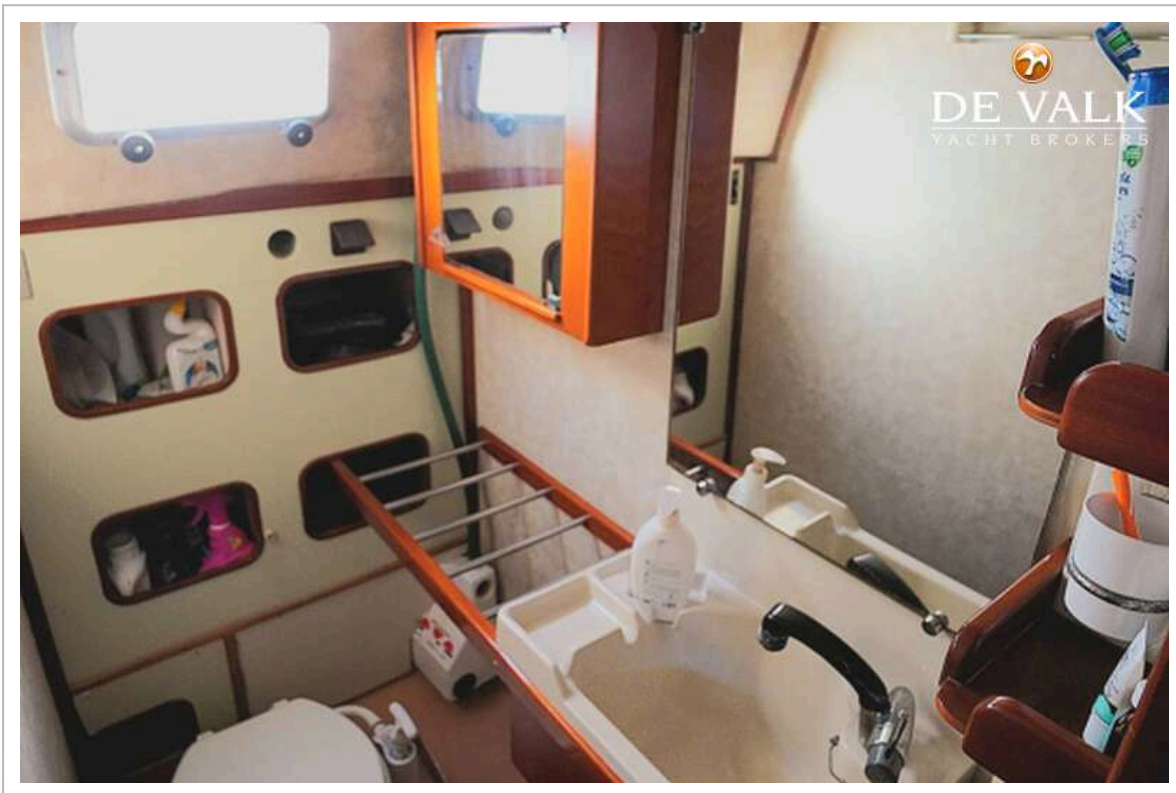
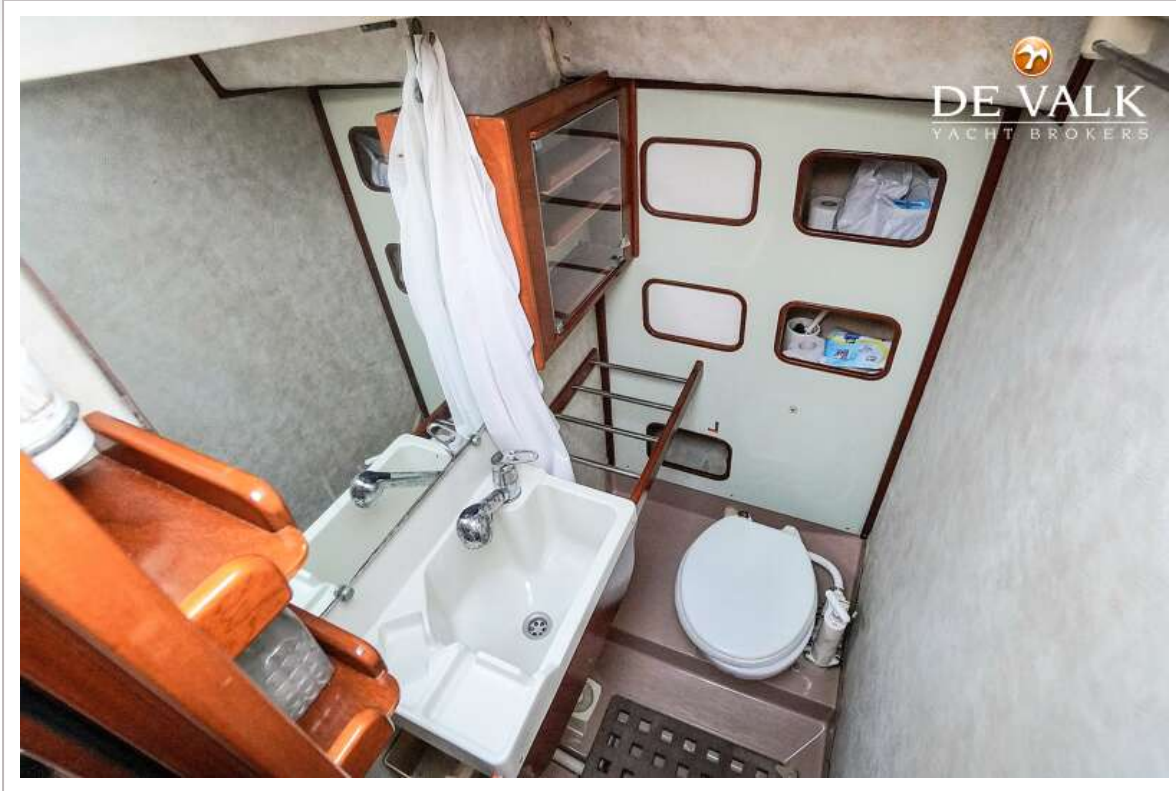
AMEL SANTORIN



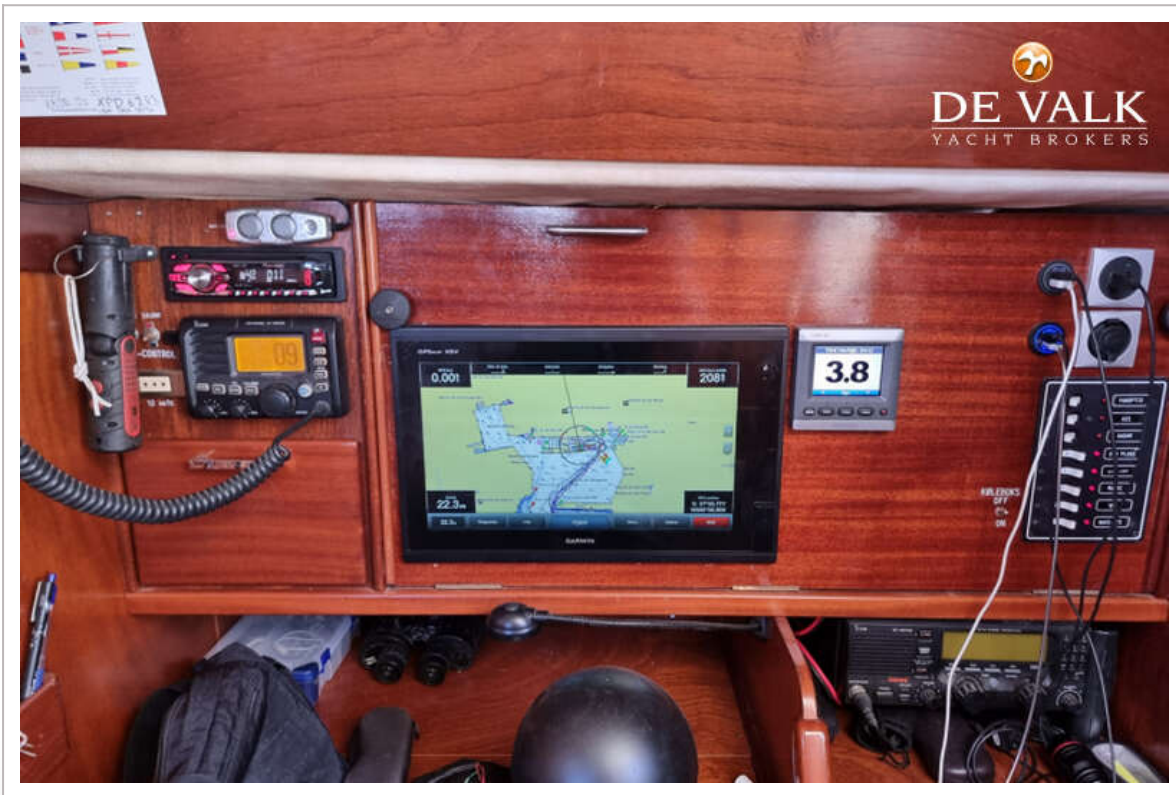
AMEL SANTORIN



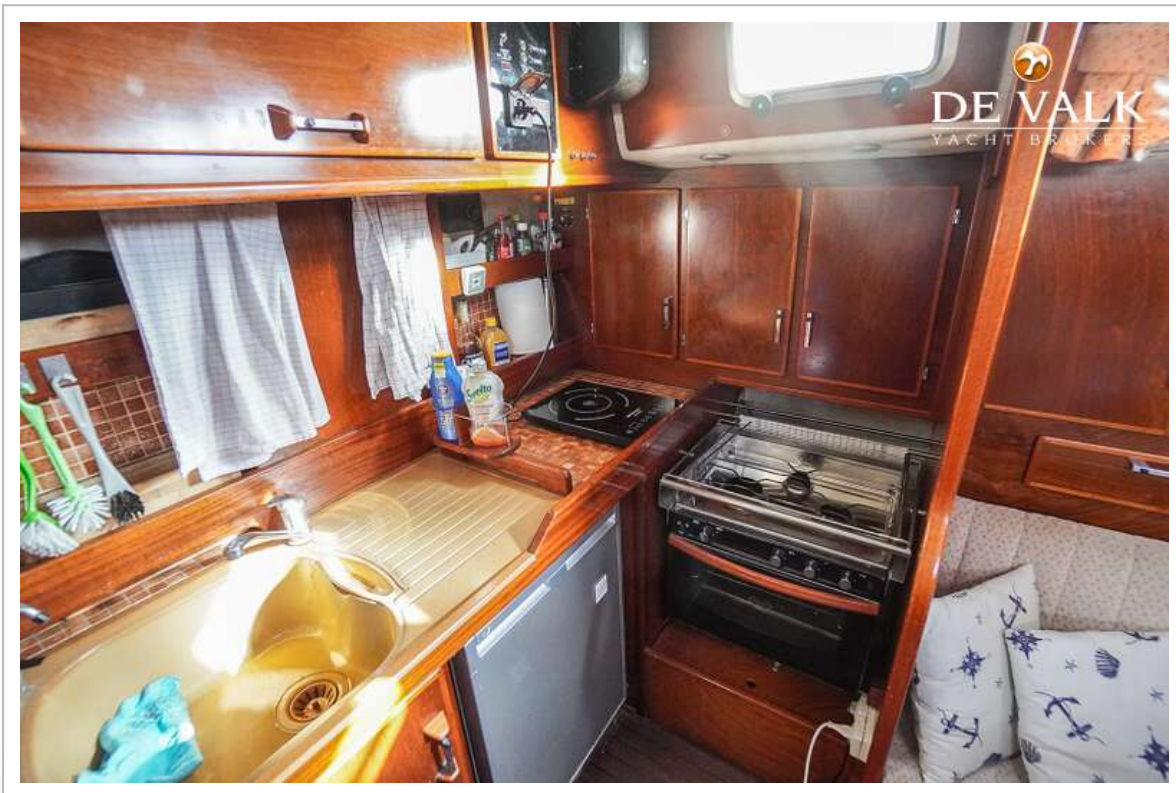
AMEL SANTORIN



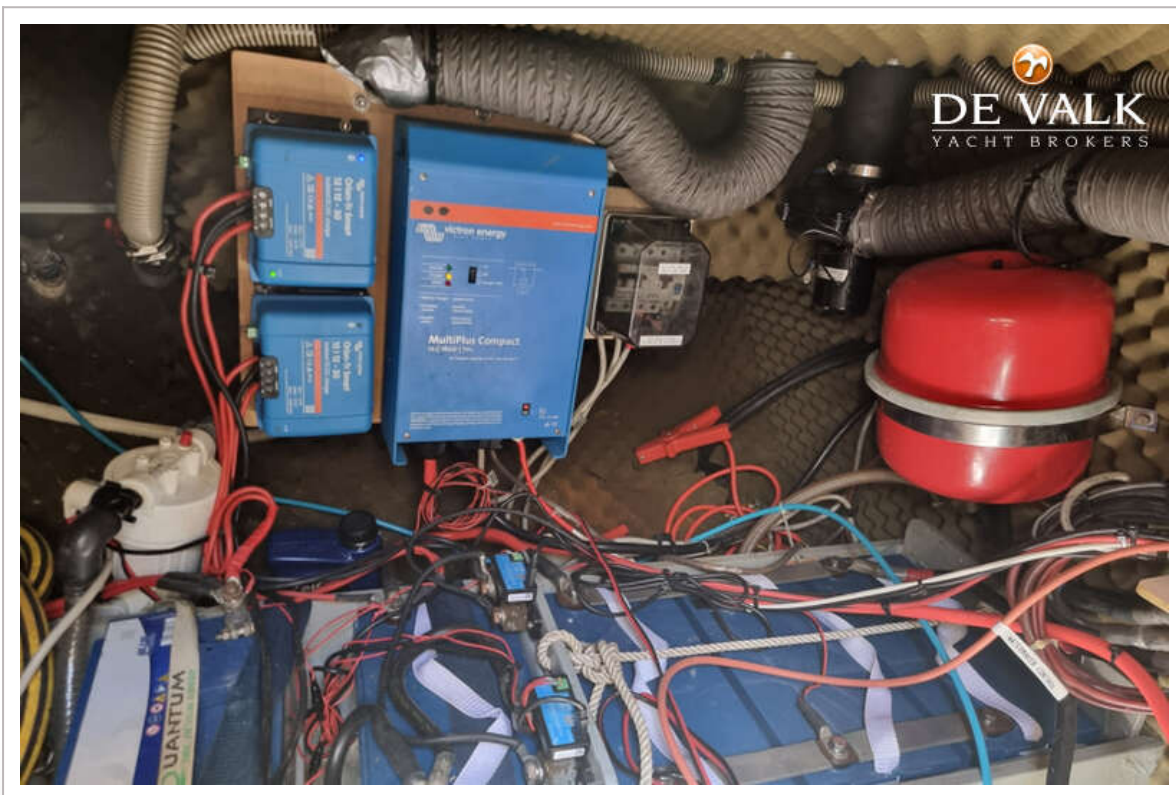
AMEL SANTORIN



AMEL SANTORIN



AMEL SANTORIN



AMEL SANTORIN

