



DE VALK  
YACHT BROKERS



## KEMPERS KETCH 24M



DE VALK  
YACHT BROKERS

# KEMPERS KETCH 24M

## KOMMENTARE DES MAKLERS

This beautiful Kempers Ketch 24M canoe stern really justifies the term motor sailor. Giving the best of both worlds, she offers you a quiet and comfortable cruise, whether sailing or cruising steadily on her powerful engine, keeping her movements to a minimum thanks to her Koopnautic stabilizers. This Kempers ketch 24 M underwent major refit in 2024. She is absolute worth a visit.

*Eric Lamers*

## TECHNISCHE DATEN

<b>Maße</b>	24.00 x 6.00 x 2.70 (m)	<b>Werft</b>	KEMPERS (ARCO Yachts NL)
<b>Baujahr</b>	1985	<b>Kabinen</b>	4
<b>Material</b>	Stahl	<b>Kojen</b>	9
<b>Motor(en)</b>	1 x MAN D2542 12 CYL diesel	<b>PS/kW</b>	320.00 (PS), 235.20 (kW)
<b>Verkaufspreis</b>	€ 749.900 (MwSt. Bezahlt)	<b>Liegeplatz</b>	contact Antibes

## KONTAKT

<b>Verkaufsbüro</b>	De Valk Antibes	<b>Telefon</b>	+33 492 91 0202
<b>Adresse</b>	2, Avenue de Verdun 06600 Antibes France	<b>E-Mail</b>	antibes@devalk.nl

## HAFTUNGS AUSSCHLUSS

Diese Angaben erfolgen nach bestem Wissen, können jedoch nicht garantiert werden.



# KEMPERS KETCH 24M

## ALLGEMEIN

<b>Modell</b>	KEMPERS KETCH 24M
<b>Typ</b>	Motorsegler
<b>Rumpflänge (m)</b>	24,00
<b>Breite (m)</b>	6,00
<b>Tiefgang (m)</b>	2,70
<b>Stehhöhe (m)</b>	2,00
<b>Baujahr</b>	1985
<b>Werft</b>	KEMPERS (ARCO Yachts NL)
<b>Land</b>	Niederlande
<b>Gewicht (t)</b>	90
<b>Rumpfmateriäl</b>	Stahl
<b>Rumpffarbe</b>	Weiß
<b>Haut-dicke Rumpf (mm)</b>	8
<b>Art Kiel</b>	Langkieler
<b>Material Aufbauten</b>	Aluminium
<b>Deckmaterial</b>	Teak
<b>Deck Finish</b>	Teak
<b>Pflicht Bedeckung</b>	Teak
<b>Antifouling (Jahr)</b>	2024
<b>Dorado Belufter</b>	ja
<b>Treibstofftank (Liter)</b>	15500 L
<b>Füllstandsanzeige (Treibstofftank)</b>	ja
<b>Trinkwassertank (Liter)</b>	3500 L
<b>Füllstandsanzeige (Trinkwasser)</b>	ja
<b>Fäkaelien Tank (Liter)</b>	ja
<b>Grauwassertank (Liter)</b>	ja
<b>Innerhalb Steuerung</b>	ja
<b>Aussen Steuerung</b>	ja

## UNTERKUNFT



# KEMPERS KETCH 24M

Kabinen	4
Kojen	9
Mannschaftskabine	ja
Mannschaftscojen	2
Innen	Teak
Decksalon	ja
Ruderhaus/Decksalon	The upper pilothouse doubles as a comfortable lounge or office
Salon	The full-beam lower salon offers exceptional space,
Standhöhe Salon (m)	2
Klima Anlage	New Reversible Air conditioning 70.000 BTU inverter system
Navigation Zenter	ja
Kartentisch	ja
Achterkabine	ja
Dinette	Spacious aft dining area with new upholstery and teak boards
Tür zum Cockpit	ja
Kombüse	Upgraded appliances (oven, microwave, coffee machine etc...)
Arbeitsfläche	ja
Ofen	ja
Mikrowelle	ja
Kuhlschrank	Fridge connection to AC converter
Gefrier Truhe	140L
Warmwasser System	New hot water boiler
Wasserdruck System	elektrisch
Geschirrspulmaschine	ja
Kochend-Wasserhahn	ja
Eismaschine	New icemaker at the bridge
Kaffeemaschine	New bean coffee machine
Eignerkabine	Double bed, new tv, with new mattress, en-suite facilities.
Länge Bett (m)	2
Badezimmer	ja
Toilet	ja
Toilette System	ja



# KEMPERS KETCH 24M

Handwaschbecken	ja
Dusche	ja
Gästekabine 1	One double bed and one single bed, en-suite facilities.
Länge Bett (m)	2
Kleiderschrank	Schubladen und Regale
Toilette System	elektrisch
Gästekabine 3	Twin beds, en-suite facilities
Kleiderschrank	Schubladen und Regale
Badezimmer	ja
Toilette	ja
Toilette System	elektrisch
Mannschaftskabine(n)	Two bed + bathroom
Waschmaschine	ja

## MASCHINEN

Motoranzahl	1
Marke	MAN
Typ	D2542 12 CYL
PS	320
kW	235.20
Kraftstoffart	Diesel
Installiert im Jahr	1985
Überholung im Jahr	March 2025 by MAN agent
Höchstgeschwindigkeit (Kn)	11
Antrieb	Schraubenwelle
Bugschraube	hydraulik
Propeller Typ	Hundested mechanical controllable Pitch propeller
Propellerblätter	4
Hand Bilgenpumpe	ja
Elektrische Bilgenpumpe	ja
Generator	MAN D0226 generator 43KW



<b>Generator 2</b>	MASE Mariner 2000TS (18kW), newly installed in aft Lazarette
<b>Batterien</b>	ja
<b>Starterbatterie</b>	ja
<b>Versorgungsbatterie</b>	ja
<b>Navigationsbatterie</b>	ja
<b>Generatorbatterie</b>	ja
<b>Batterie Ladegerat</b>	ja
<b>Umwandler</b>	ja
<b>Wasserbereiter</b>	Overhauled Dessalator watermaker (removed, serviced, reinstalled)
<b>Stabilisatoren</b>	Koop Nautic stabilizers

## NAVIGATION

<b>Kompass</b>	ja
<b>Tiefenanziege</b>	I70s instrumentation -CP100 sonar module + high-speed transduce
<b>UKW</b>	Ray 90 wireless station + wireless VHF for cockpit
<b>Radar</b>	Quantum 18" Q24C RADAR
<b>Radar/GPS/Plotter</b>	Raymarine 12" and Raymarine 16"
<b>AIS Empfänger</b>	ja
<b>AIS Transceiver</b>	AIS 700 Class B (TX/RX)
<b>Kamera</b>	CAM300 Eyeball engine room camera
<b>Navigation Beleuchtung</b>	Overhauled navigation lights & mast lights

## AUSRÜSTUNG

<b>Cockpit Polster</b>	ja
<b>Cockpit Tisch</b>	ja
<b>Badeleiter</b>	ja
<b>Gangway</b>	ja
<b>Anker</b>	ja
<b>Ankerkette</b>	ja



Ankerwinde	hydraulik
Beiboot	Yamaha 340
Ausserborder	Honda 20 HP fourstroke
Davits	ja
See Reling	ja
Rettungsinsel (Pers)	Two new 8-person liferafts (16 pax total)
Scheibenwischer	ja
Horn	ja
Fenderkissen	ja
Festmacher	ja
TV	New TVs in master cabin, saloon, and bridge
TV-Empfänger	New numeric TV antenna on mast + wiring
Radio	Bluetooth car radio in bridge + sound system repairs
Uhr - Barometer	ja
Feuerloscher	New fire extinguishers in all areas
Feuerloscher in Maschine Raum	ja

## RIGG

Rig	Ketch
Stehendes Gut	Renewed 2007
Material Mast	Aluminium
Großsegel	Elvstrom 70m <sup>2</sup> refit 2025
Rollgroß Anlage	ja
Besan	31m <sup>2</sup> (overhauled at Elvstrom sails 2025)
Fock	2 x 38m <sup>2</sup> (overhauled at Elvstrom sails 2025)
Genua	135m <sup>2</sup> (overhauled at Elvstrom sails 2025)
Großer Klüver	63m <sup>2</sup> (overhauled at Elvstrom sails 2025)
Sekundaire Schot Winschen	ja
Genua Schotwischen	ja
Fall Winschen	ja



# KEMPERS KETCH 24M





# KEMPERS KETCH 24M



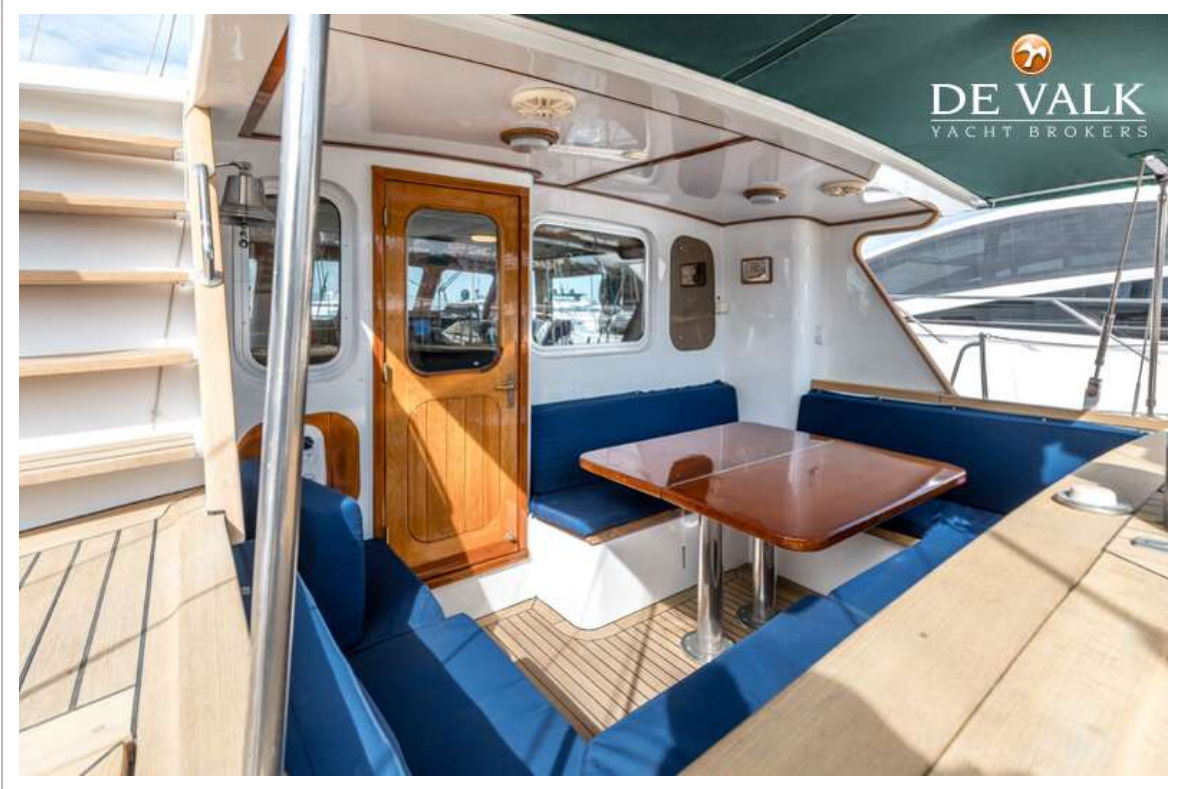
# KEMPERS KETCH 24M



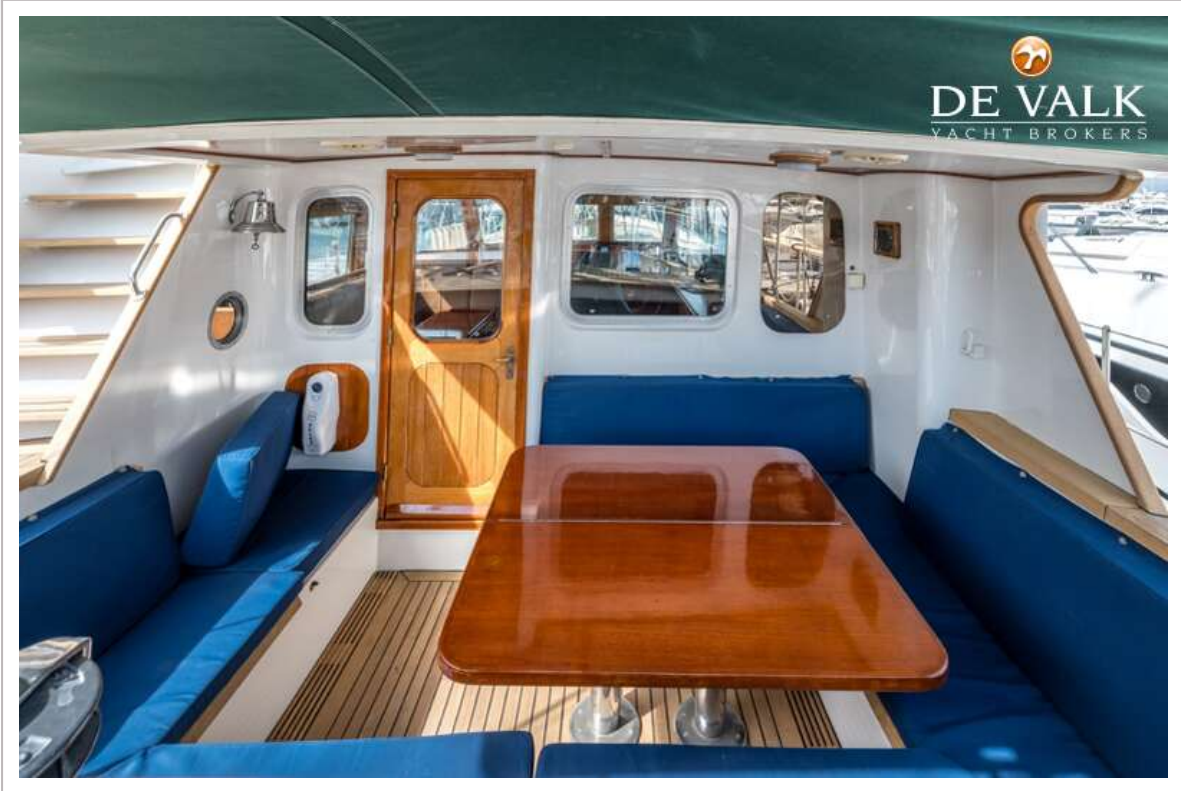
KEMPERS KETCH 24M



KEMPERS KETCH 24M



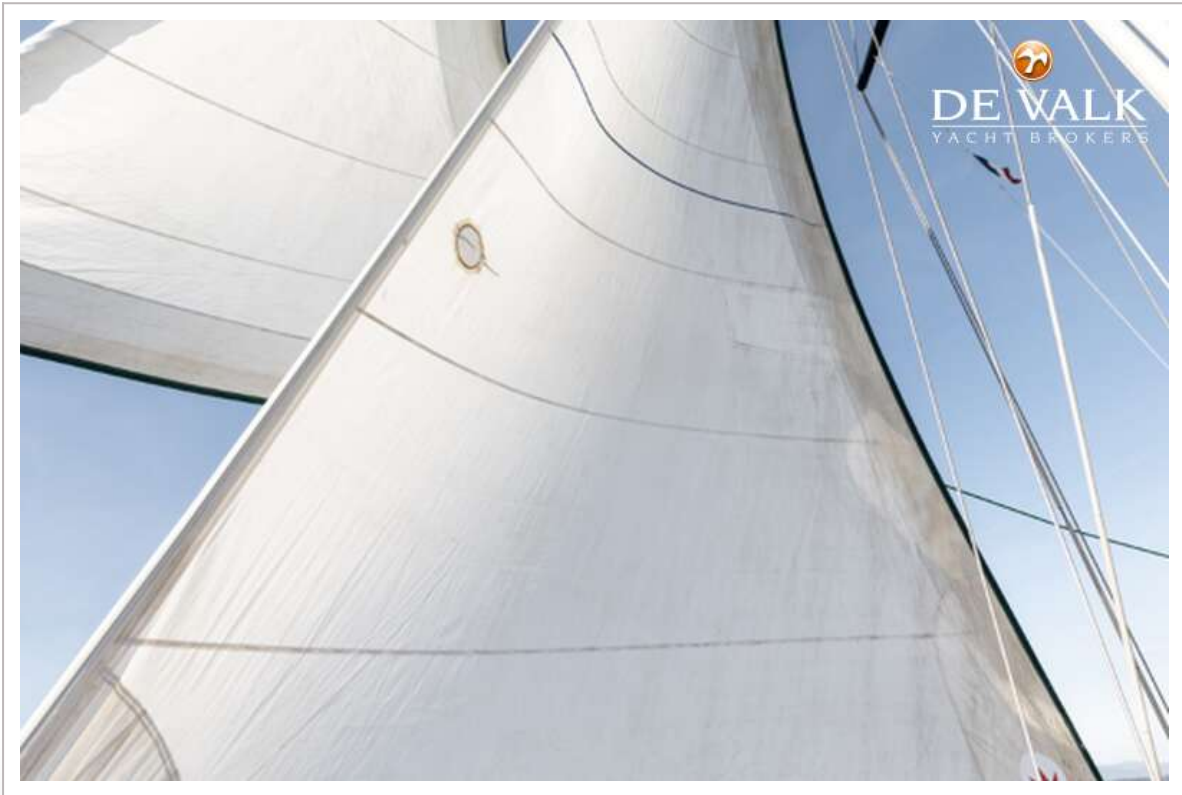
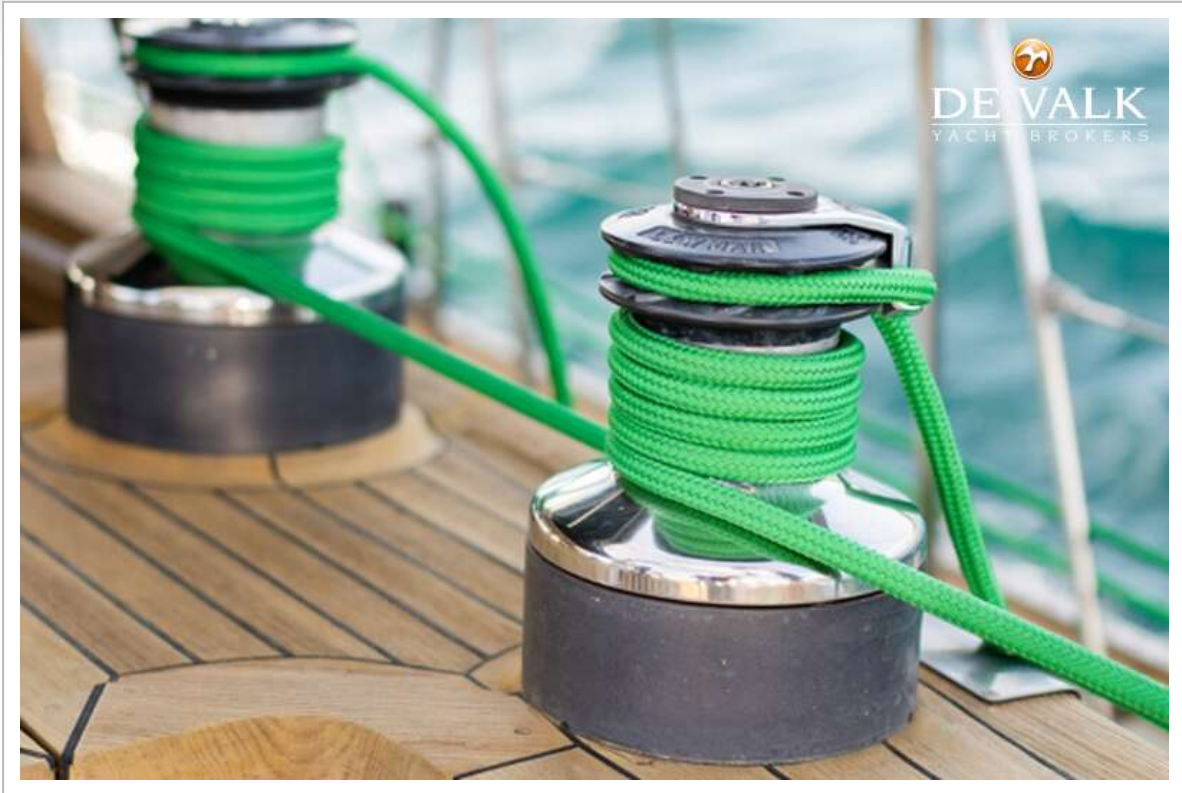
# KEMPERS KETCH 24M



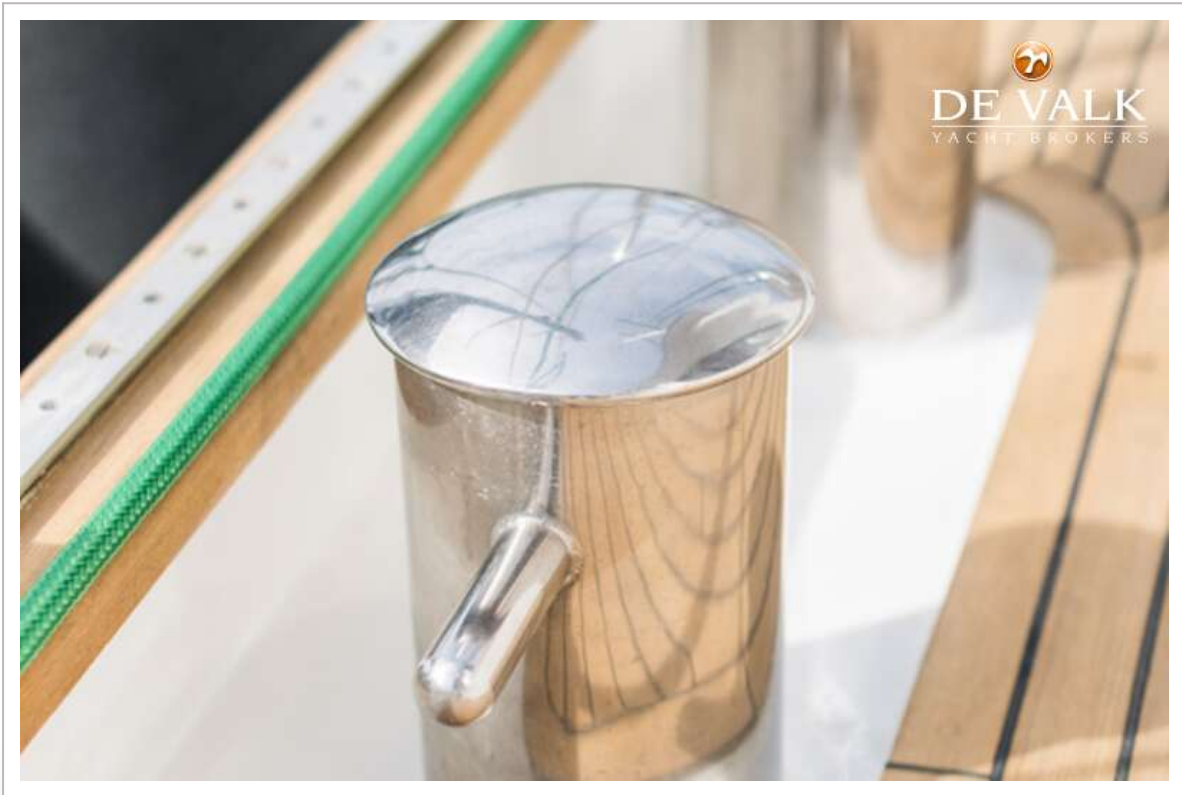
# KEMPERS KETCH 24M



# KEMPERS KETCH 24M



# KEMPERS KETCH 24M

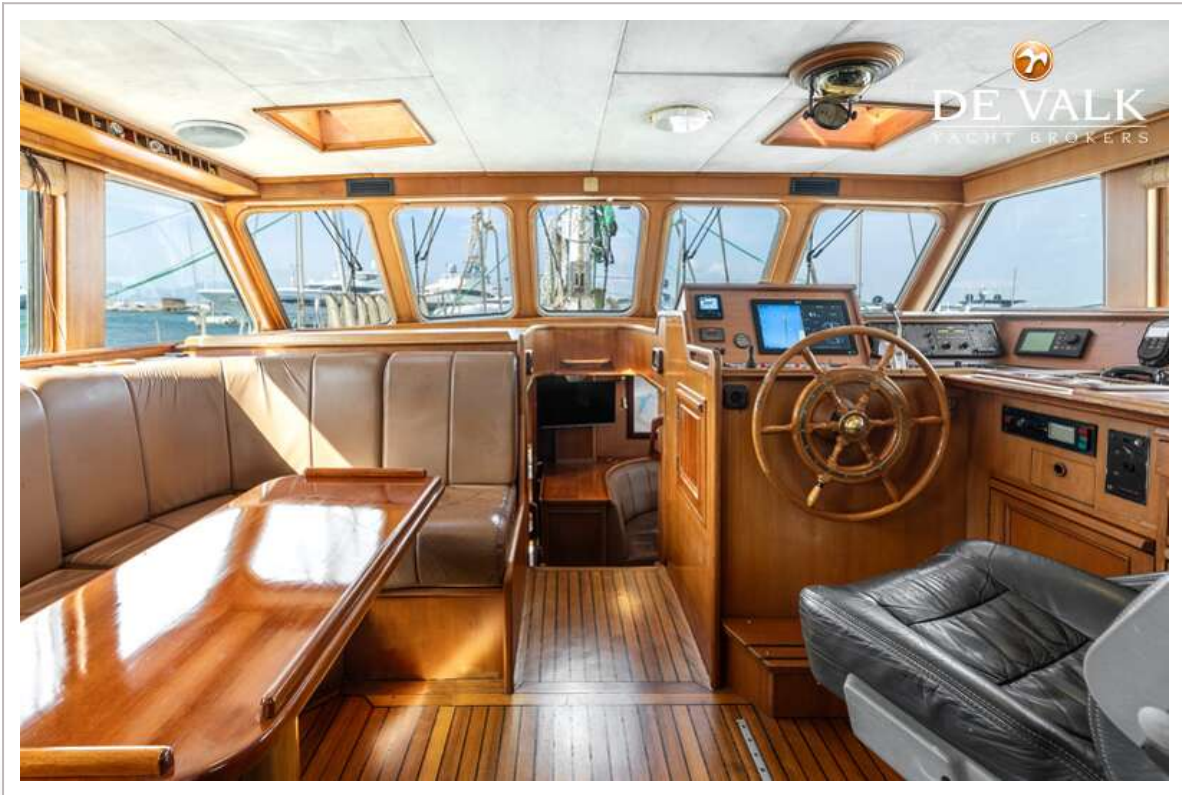




KEMPERS KETCH 24M



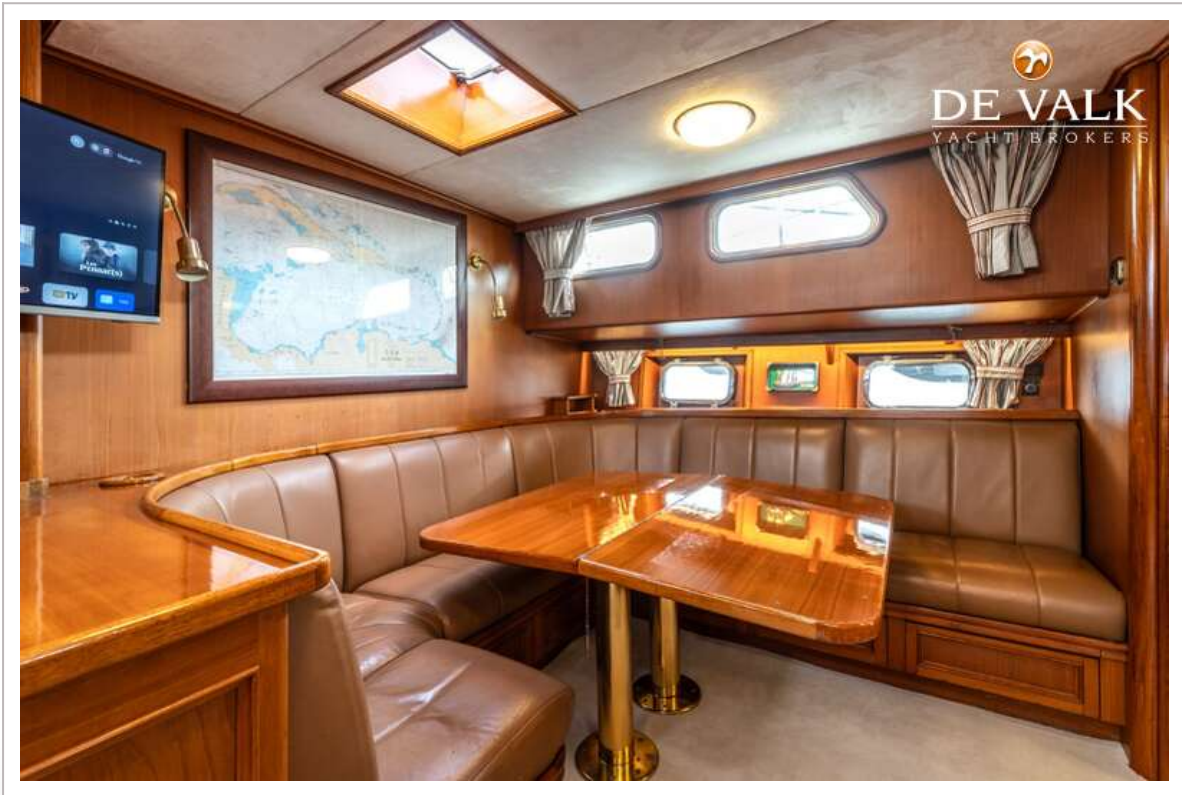
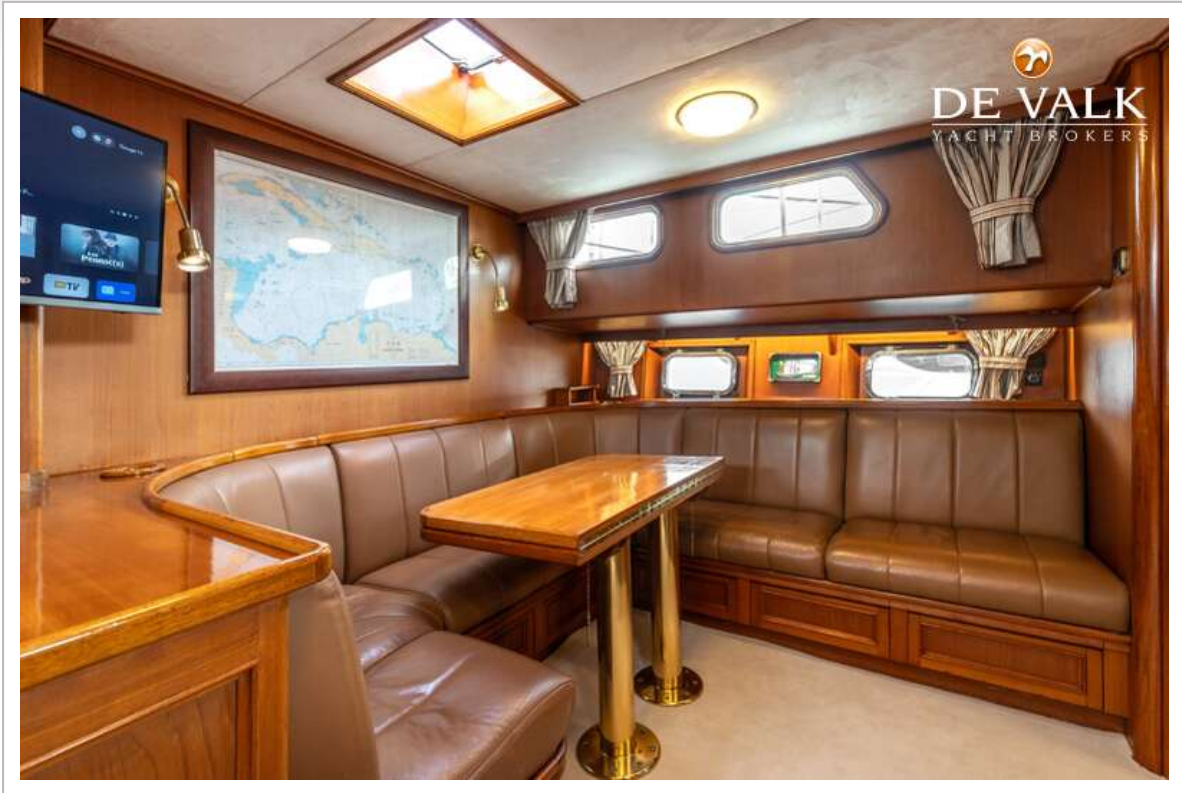
  
DE VALK  
YACHT BROKERS



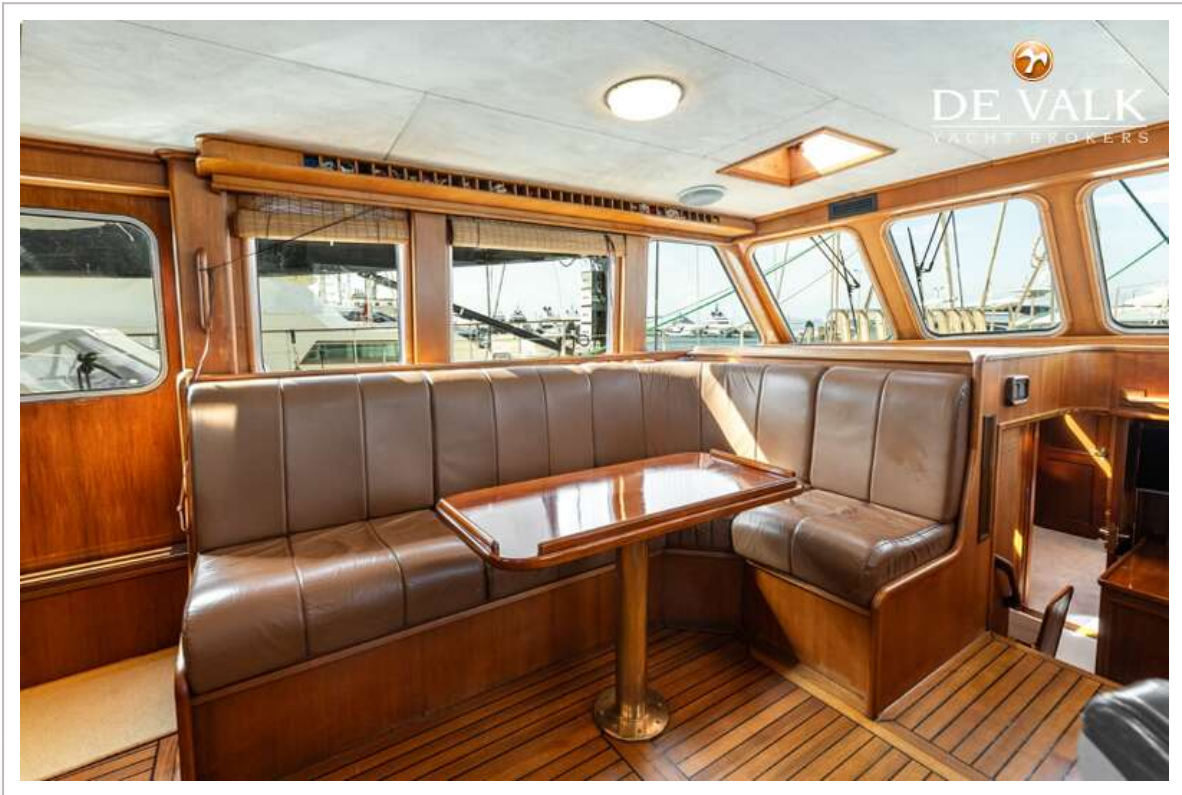
  
DE VALK  
YACHT BROKERS



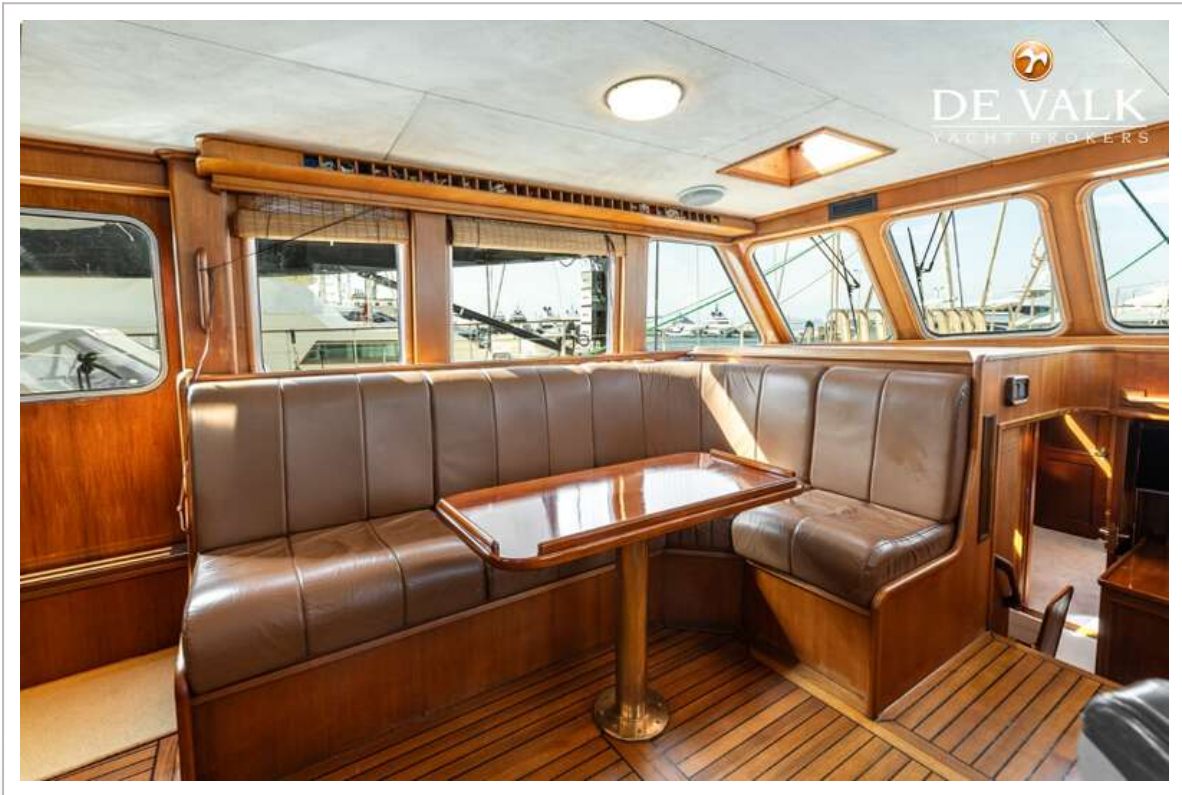
KEMPERS KETCH 24M



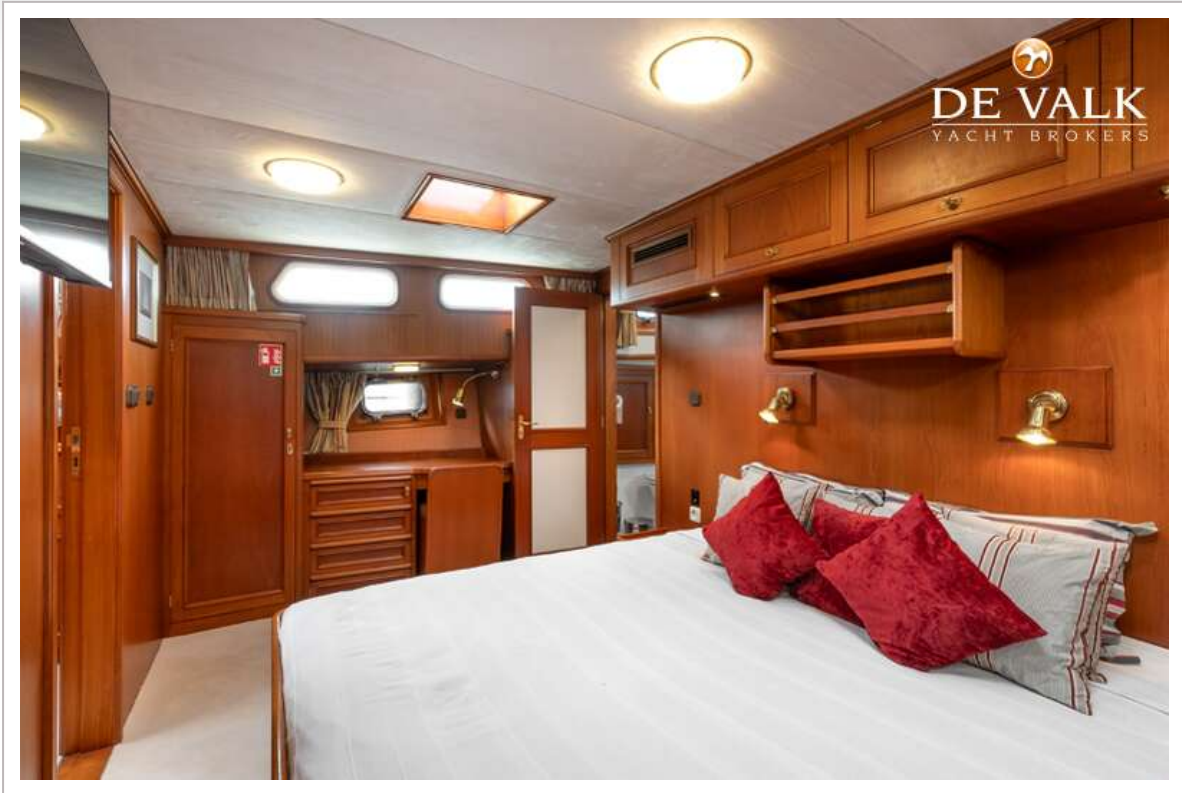
KEMPERS KETCH 24M



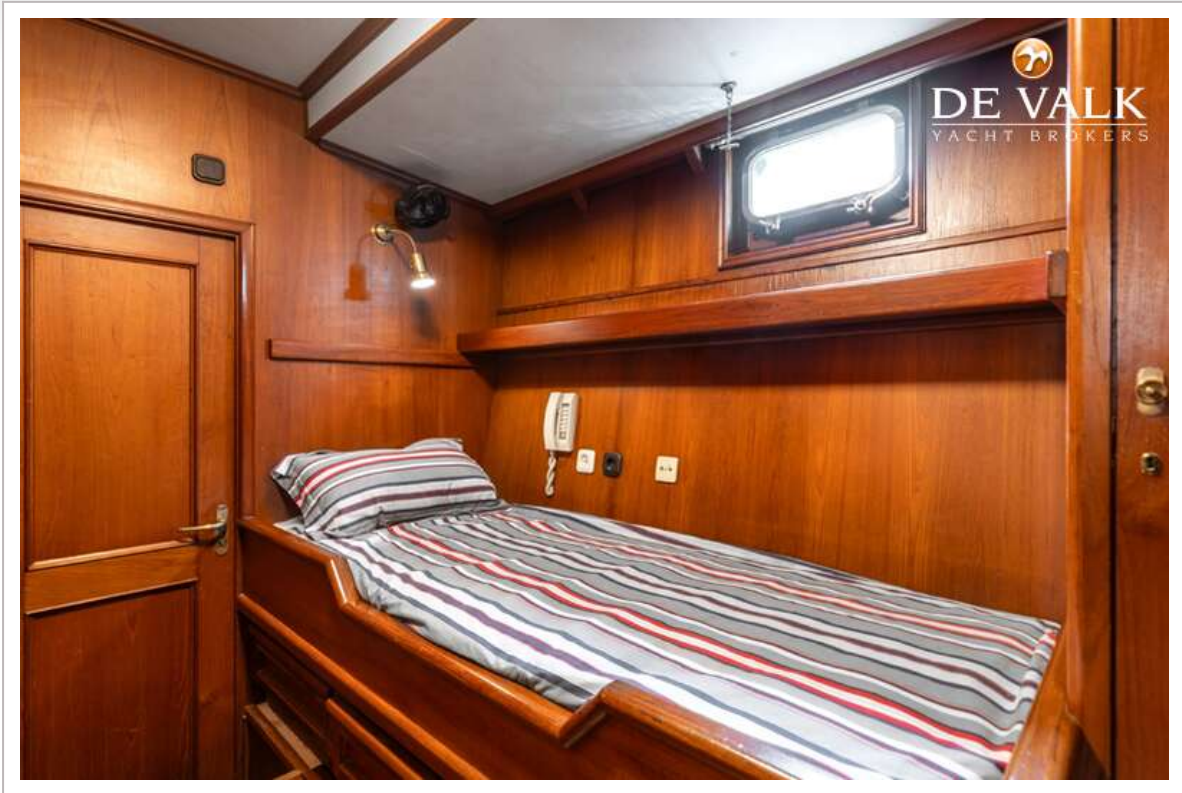
# KEMPERS KETCH 24M



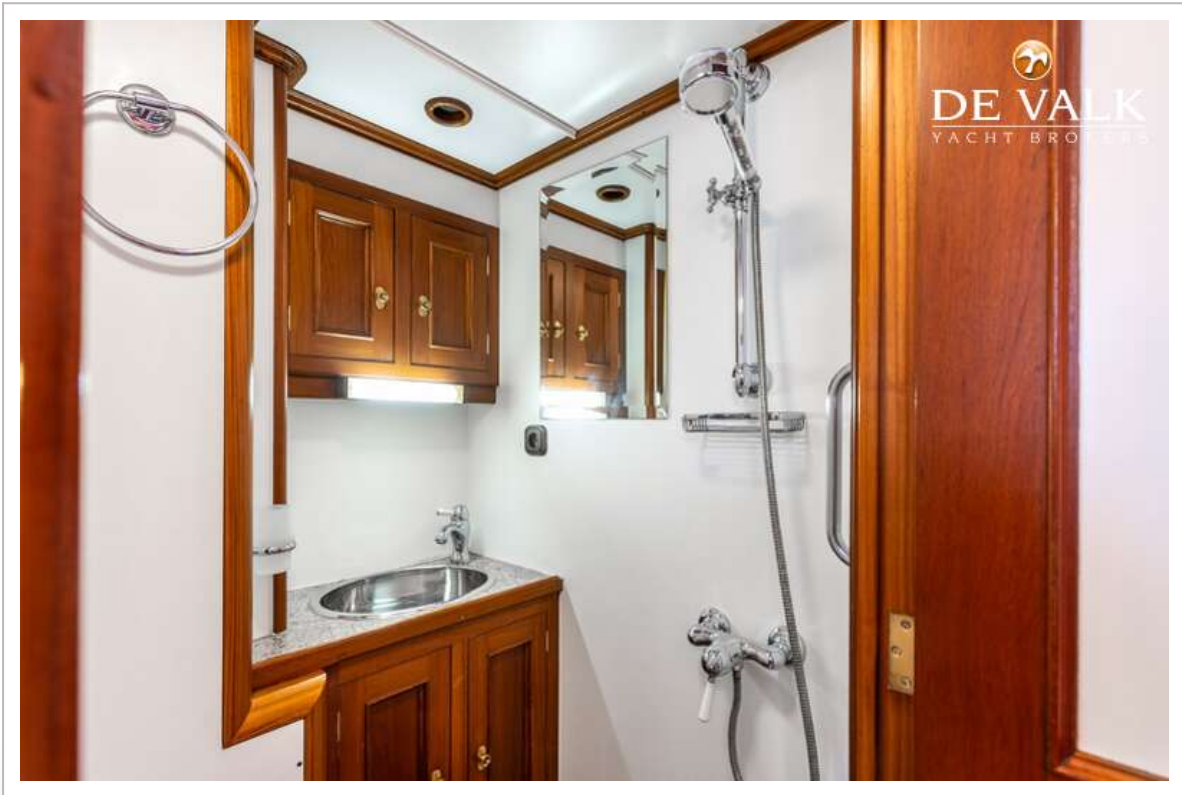
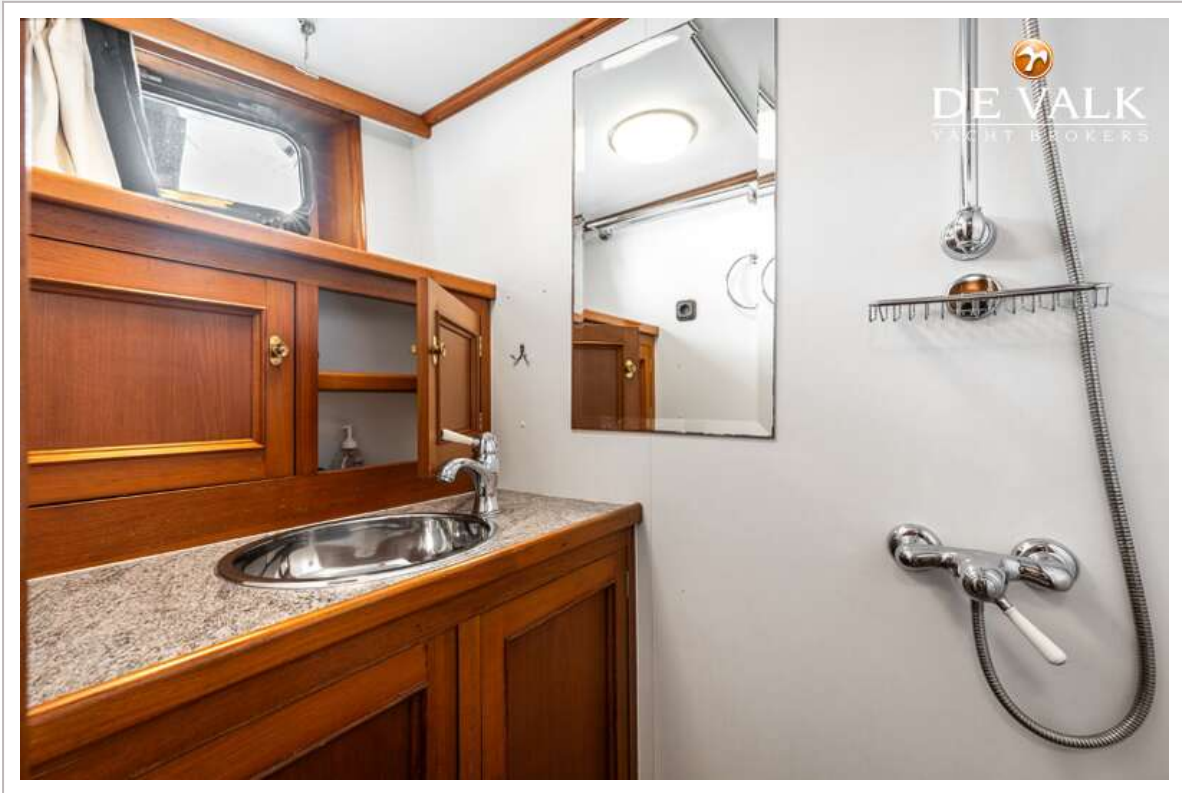
KEMPERS KETCH 24M



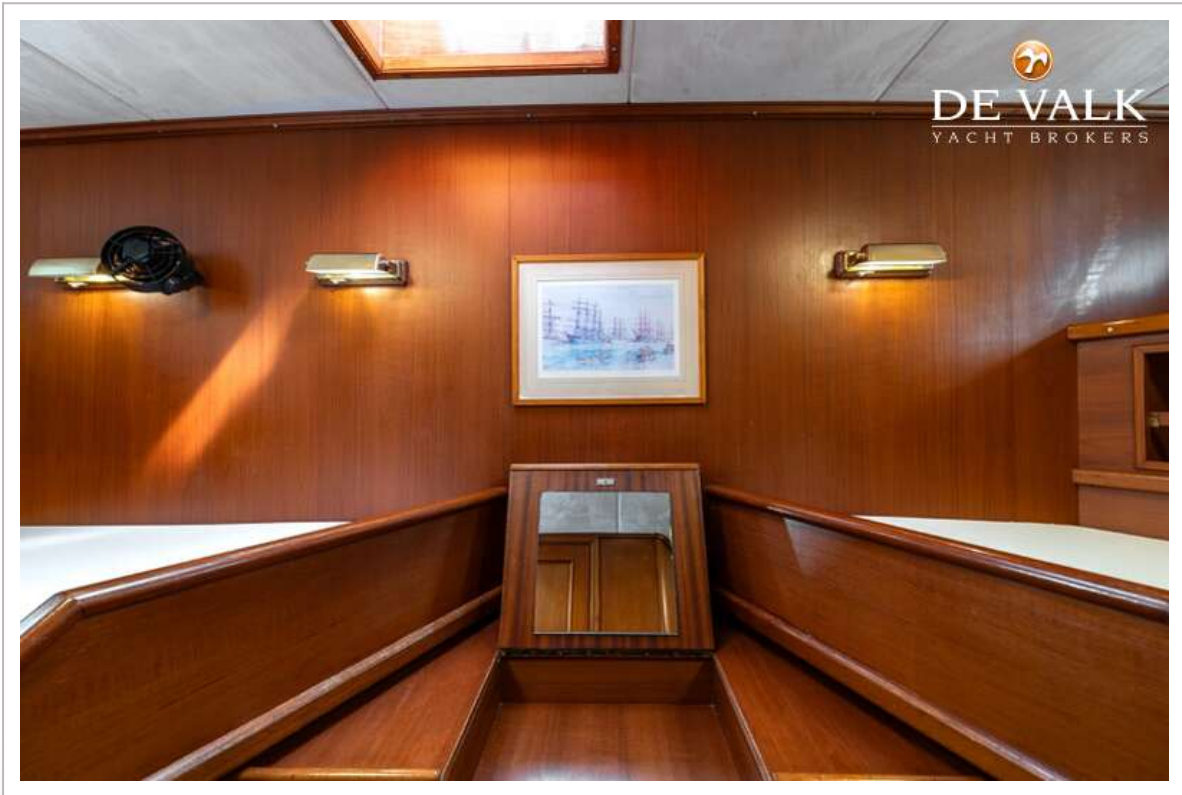
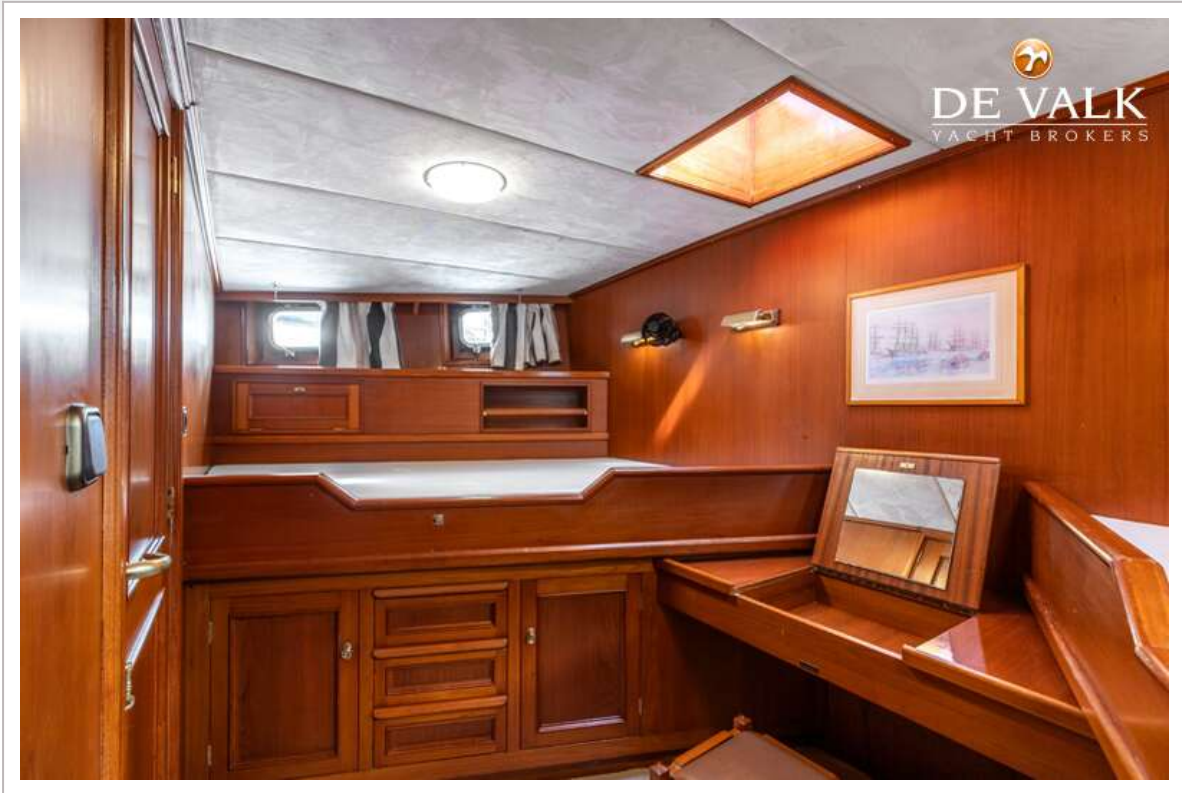
KEMPERS KETCH 24M



KEMPERS KETCH 24M

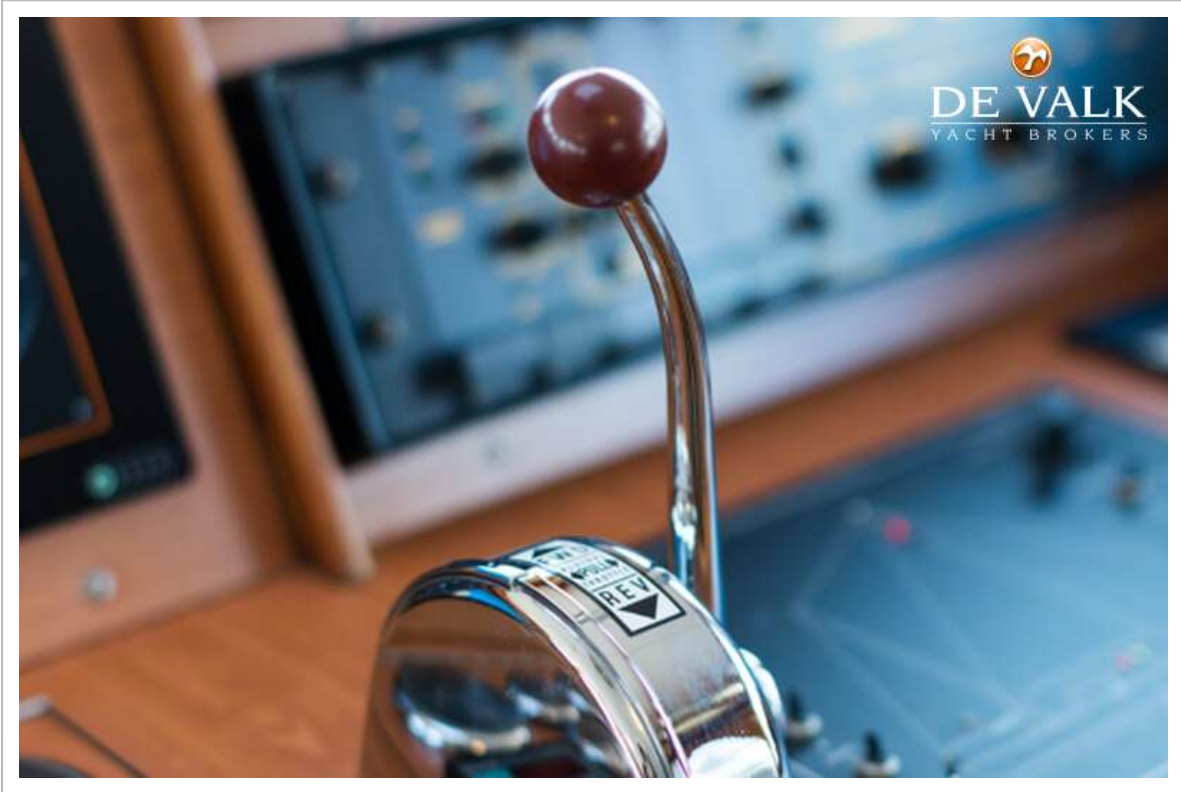
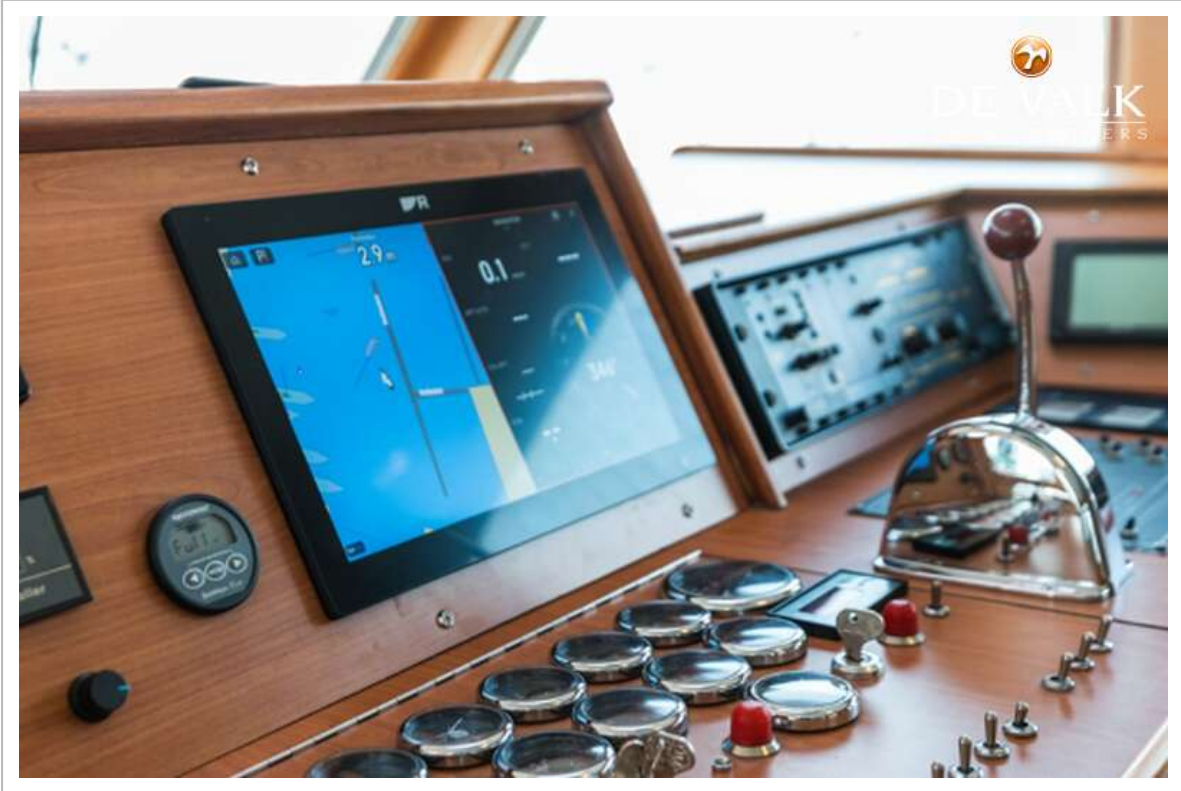


# KEMPERS KETCH 24M





# KEMPERS KETCH 24M



# KEMPERS KETCH 24M

