



DE VALK  
YACHT BROKERS



## BRUCE ROBERTS SPRAY 40C



DE VALK  
YACHT BROKERS

# BRUCE ROBERTS SPRAY 40C

## KOMMENTARE DES MAKLERS

How about this unique quirky and almost cocky 40ft Spray 40C? A solid, professionally built hull and engineering, and partially self-finished. Definite work to do for a next owner, but most is simple and purely cosmetic. The primal solidity and stability basically prevail. Be pleasantly surprised below and above deck by the truly incredible living space. Enjoy the view in the spacious deck saloon or from the comfort seats on the aft deck. A truly relaxed, delightful and safe world traveller with good cruising characteristics, low budget, no rush and very suitable for an adventurous couple.

*Willem Koopmans*

## TECHNISCHE DATEN

<b>Maße</b>	11.86 x 4.45 x 1.37 (m)	<b>Werft</b>	Yacht Metal Boatbuilding / self built
<b>Baujahr</b>	2011	<b>Kabinen</b>	1
<b>Material</b>	Stahl	<b>Kojen</b>	4
<b>Motor(en)</b>	1 x Mercedes revised OM 602 5 cilind diesel	<b>PS/kW</b>	95.00 (PS), 69.92 (kW)
<b>Verkaufspreis</b>	€ 89.000 (MwSt. Beahlt)	<b>Liegeplatz</b>	contact sales office

## KONTAKT

<b>Verkaufsbüro</b>	De Valk Costa Blanca	<b>Telefon</b>	+34965021569
<b>Adresse</b>	Costa Blanca Region 03730 Javea Alicante Spain	<b>E-Mail</b>	costablanca@devalk.nl

## HAFTUNGS AUSSCHLUSS

Diese Angaben erfolgen nach bestem Wissen, können jedoch nicht garantiert werden.



# BRUCE ROBERTS SPRAY 40C

## ALLGEMEIN

<b>Modell</b>	BRUCE ROBERTS SPRAY 40C
<b>Typ</b>	Segelyacht
<b>Rumpflänge (m)</b>	11,86
<b>Breite (m)</b>	4,45
<b>Tiefgang (m)</b>	1,37
<b>Durchfahrtshöhe (m)</b>	16,75
<b>Stehhöhe (m)</b>	1,95
<b>Baujahr</b>	2011
<b>Lancierung</b>	2012
<b>Werft</b>	Yacht Metal Boatbuilding / self built
<b>Land</b>	Polen
<b>Entwerfer</b>	Bruce Roberts
<b>Gewicht (t)</b>	15
<b>Brutto tonnage</b>	15
<b>Netto tonnage</b>	4
<b>CE Norm</b>	NA
<b>Rumpfmateral</b>	Stahl
<b>Rumpffarbe</b>	Weiß
<b>Rumpfform</b>	S-Spant Multi chine
<b>Art Kiel</b>	Langkieler
<b>Schlingerkielen</b>	ja
<b>Material Aufbauten</b>	Stahl
<b>Stossliste</b>	Stahl
<b>Deckmaterial</b>	Stahl
<b>Deck Finish</b>	Teak 10 mm
<b>Deck Finish Aufbauten</b>	Antirutsch Farbe
<b>Pflicht Bedeckung</b>	Teak 10 mm
<b>Antifouling (Jahr)</b>	2023
<b>Dorado Belufter</b>	ja
<b>Fenster Einfassung</b>	Aluminium



<b>Fenster Material</b>	Sicherheitsglas
<b>Decks Luke</b>	ja
<b>Bullauge</b>	ja
<b>Isolation</b>	ja
<b>Treibstofftank (Liter)</b>	Stahl 680, 3x tank
<b>Füllstandsanzeige (Treibstofftank)</b>	BEP ultrasonic
<b>Trinkwassertank (Liter)</b>	Edelstahl 1.200, 3x tank
<b>Füllstandsanzeige (Trinkwasser)</b>	BEP ultrasonic
<b>Fäkaelien Tank (Liter)</b>	150, approx.
<b>Radsteuerung</b>	hydraulik Marsili
<b>Innerhalb Steuerung</b>	ja
<b>Aussen Steuerung</b>	ja
<b>Not-Pinne</b>	ja
<b>Weitere Info Farbe und Anstrich</b>	Needs cosmetic attention, but nothing special
<b>Weitere Info</b>	Yacht is partly self built, no CE required

## UNTERKUNFT

<b>Kabinen</b>	1
<b>Kojen</b>	4
<b>Innen</b>	Eichen
<b>Fussboden</b>	Teak und Holly Pvc laminate and
<b>Offenen Cockpit</b>	ja
<b>Ruderhaus</b>	ja
<b>Ruderhaus/Decksalon</b>	With comfortable U seat
<b>Salon</b>	Spacious "living" below deck
<b>Standhöhe Salon (m)</b>	1.95
<b>Heizung</b>	Webasto CV via radiators, not used for years, needs check
<b>Navigation Zentner</b>	ja
<b>Kartentisch</b>	ja
<b>Achterkabine</b>	Massive, looks like in a 50 ft
<b>Dinette</b>	ja



# BRUCE ROBERTS SPRAY 40C

Dinette zum umbauen	Possible
Tür zum Achterdeck	ja
Kombüse	ja
Arbeitsfläche	Duropal
Spülbecken	Edelstahl 1 + 1/2
Herd	Gas 3 burner
Ofen	ja
Gas-Alarm	ja
Mikrowelle	ja
Kuhlschrank	Compressor and cooling box
Gefrier Truhe	In fridge
Warmwasser System	220V + Motor Boiler 30 ltr
Wasserdruck System	elektrisch
Hand und/oder Fusspumpe	Fresh water
Eignerkabine	Doppelbett
Länge Bett (m)	1.8 x 2
Kleiderschrank	All-over
Badezimmer	en suite
Toilet	ja
Toilette System	handbetrieb
Handwaschbecken	ja
Dusche	en suite
Waschmaschine/Trockner Kombi	Samsung Eco Bubble, 7 kg
Weitere Info	Typical 2 persons layout, but plenty of space for guest to sleep
Weitere Info	Never seen so much usable space on a 40 ft

## MASCHINEN

Motoranzahl	1
Marke	Mercedes revised
Typ	OM 602 5 cilind
PS	95



# BRUCE ROBERTS SPRAY 40C

<b>kW</b>	69.92
<b>Kraftstoffart</b>	Diesel
<b>Installiert im Jahr</b>	2011
<b>Höchstgeschwindigkeit (Kn)</b>	8
<b>Marschgeschwindigkeit (Kn)</b>	6,5
<b>Verbrauch (l/h)</b>	5
<b>Reichweite (nm)</b>	850
<b>Kühlungssystem Motor</b>	indirekte Wärmetauscher
<b>Motor bedienung</b>	Seilzug Kabel
<b>Exhaust</b>	wassergekühlt
<b>Propeller Typ</b>	ja
<b>Propellerblätter</b>	3
<b>Propellerwelle schmierung</b>	Fett
<b>Hand Bilgenpumpe</b>	ja
<b>Elektrische Bilgenpumpe</b>	ja
<b>Elektrische Anlage</b>	12/230
<b>Batterien</b>	ja
<b>Starterbatterie</b>	12 Volt 110 Ah
<b>Versorgungsbatterie</b>	24 Volt 230 Ah
<b>Batterie Ladegerat/Umwandler</b>	Victron Energy MultiPlus Compact; 24/1600/40
<b>Solar panele</b>	2 on side boards, massive space available on cockpit roof!
<b>Landstrom</b>	ja

## NAVIGATION

<b>Kompass</b>	Suunto D-135
<b>Elektrisches Kompass</b>	On pilot
<b>Tiefenanzeige</b>	2x Raymarine ST40
<b>Windlupe anzeige</b>	Raymarine ST60
<b>UKW</b>	Icom IC-M-421
<b>Autopilot</b>	Raymarine ST 6002 on SPX 30 computer
<b>Windfahne Steuerung</b>	Hydrovane



<b>Radar</b>	Simrad 4G on R111 interface
<b>GPS</b>	Furuno GP32
<b>Radar/Plotter</b>	Open CPN on computer and monitor
<b>AIS Empfänger</b>	ja
<b>AIS Transceiver</b>	Easy TRX
<b>Navigation Beleuchtung</b>	Hella

## AUSRÜSTUNG

<b>Spritzverdek</b>	Perpex over entrance
<b>Feste Haube</b>	Massive space for solar panels
<b>Cockpit Polster</b>	ja
<b>Cockpit Sessel</b>	ja
<b>Badeplattform</b>	ja
<b>Badeleiter</b>	ja
<b>Bugtreppe</b>	Easy step
<b>Anker</b>	Kobra 35 kg
<b>Ankerkette</b>	80 mtr, 12 mm
<b>Ankerwinde</b>	Lewmar
<b>Ausserborder</b>	4 hp Yamaha
<b>Rettungsinsel</b>	Tasche
<b>Rettungsinsel (Pers)</b>	4
<b>Letzte Wartung Rettungsinsel</b>	Needs renewal survey
<b>Fenderkissen</b>	ja
<b>Festmacher</b>	ja
<b>Reserve Teilen</b>	ja
<b>Radio-CD Spieler</b>	ja
<b>Uhr - Barometer</b>	ja
<b>Feuerloscher</b>	Needs data check
<b>Weitere Info</b>	Safe world traveller; with "a cup of tea" relaxed in your hands
<b>Weitere Info</b>	No sea condition will stop this vessel en route



## RIGG

<b>Rig</b>	Chinese lug Rig 2 mast system
<b>Material Mast</b>	Holz Laminated wood/epoxy re-inforced
<b>Durchgehende Mast</b>	Seal needs check, small water leakage
<b>Großsegel</b>	50 m2 230-260 bg Dacron
<b>Besan</b>	40 m2, 230-260 bg Dacron
<b>Weitere Info</b>	Main mast 14 mtr, diameter 310 mm
<b>Weitere Info</b>	Mizzen mast 12,4 mtr, diameter 250 mm

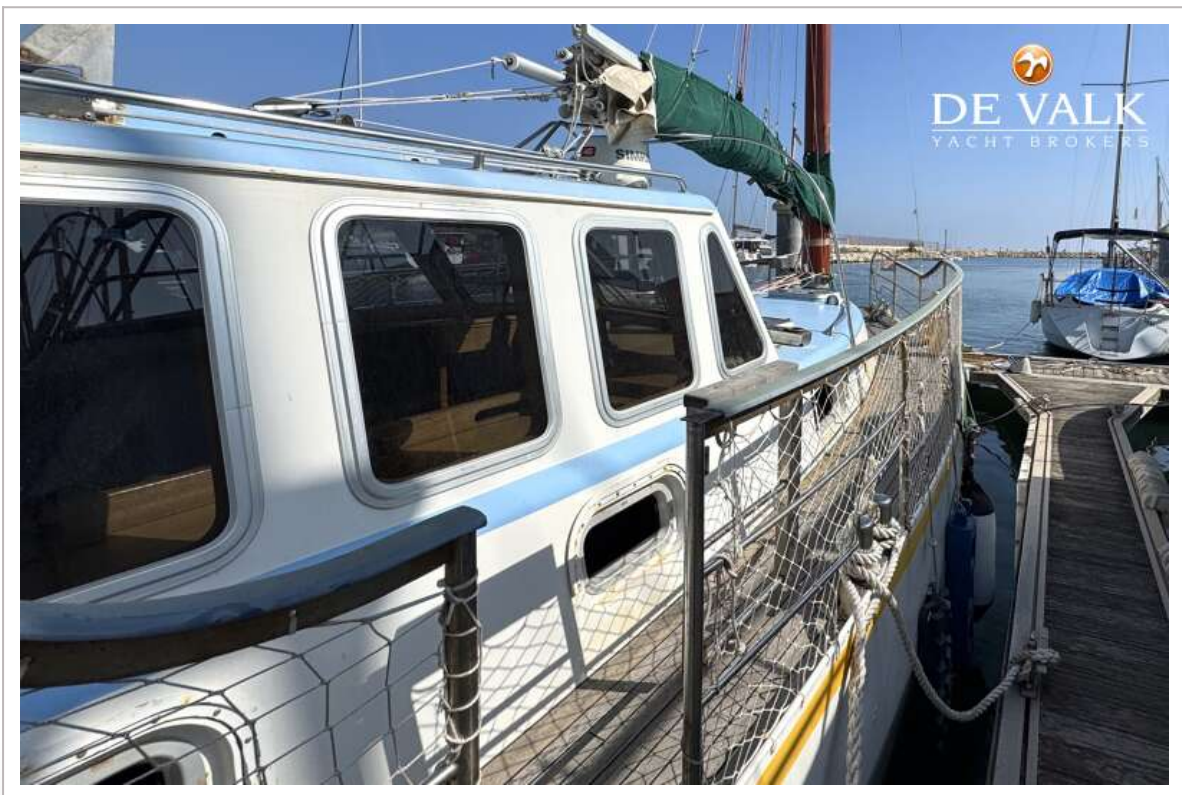




# BRUCE ROBERTS SPRAY 40C

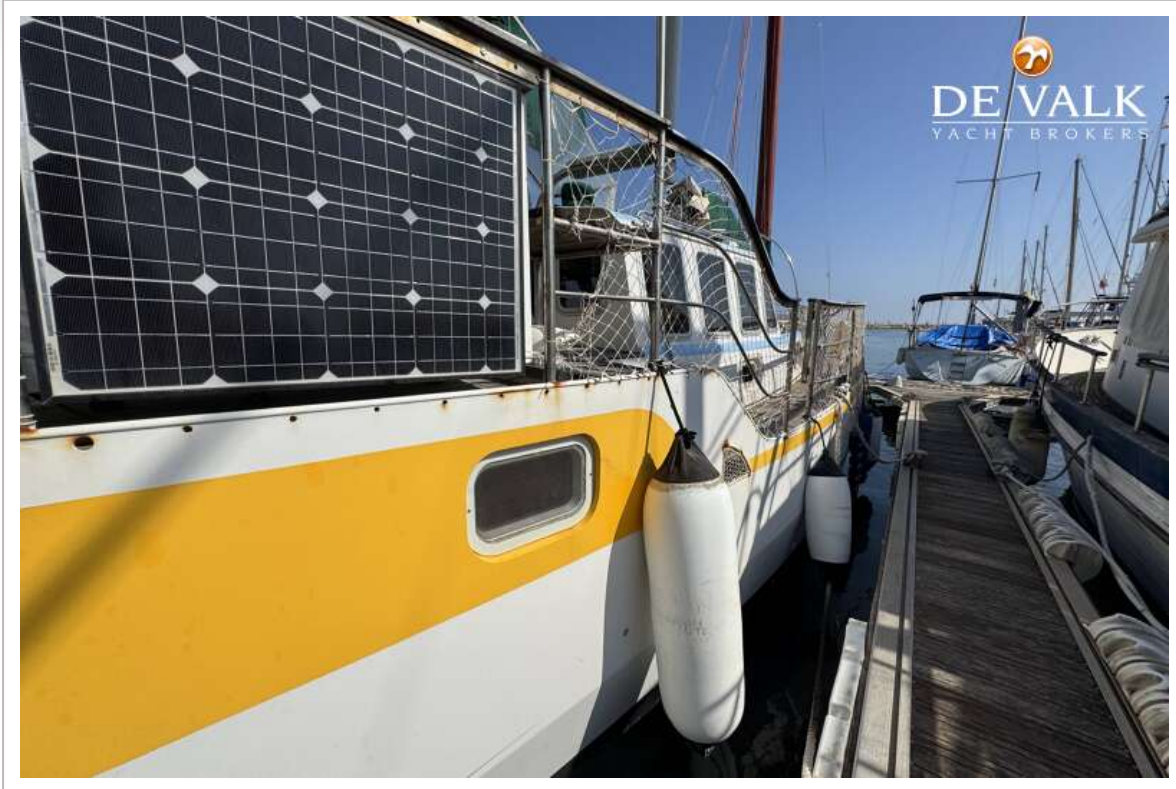


# BRUCE ROBERTS SPRAY 40C



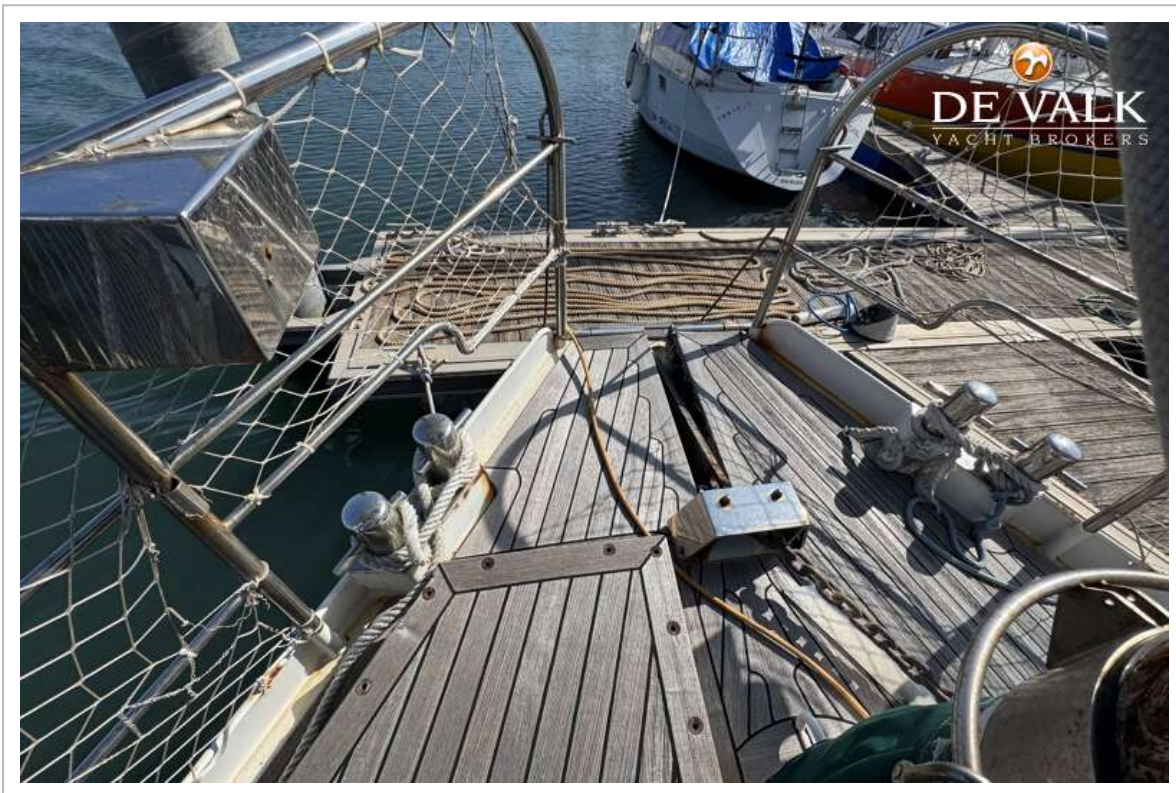
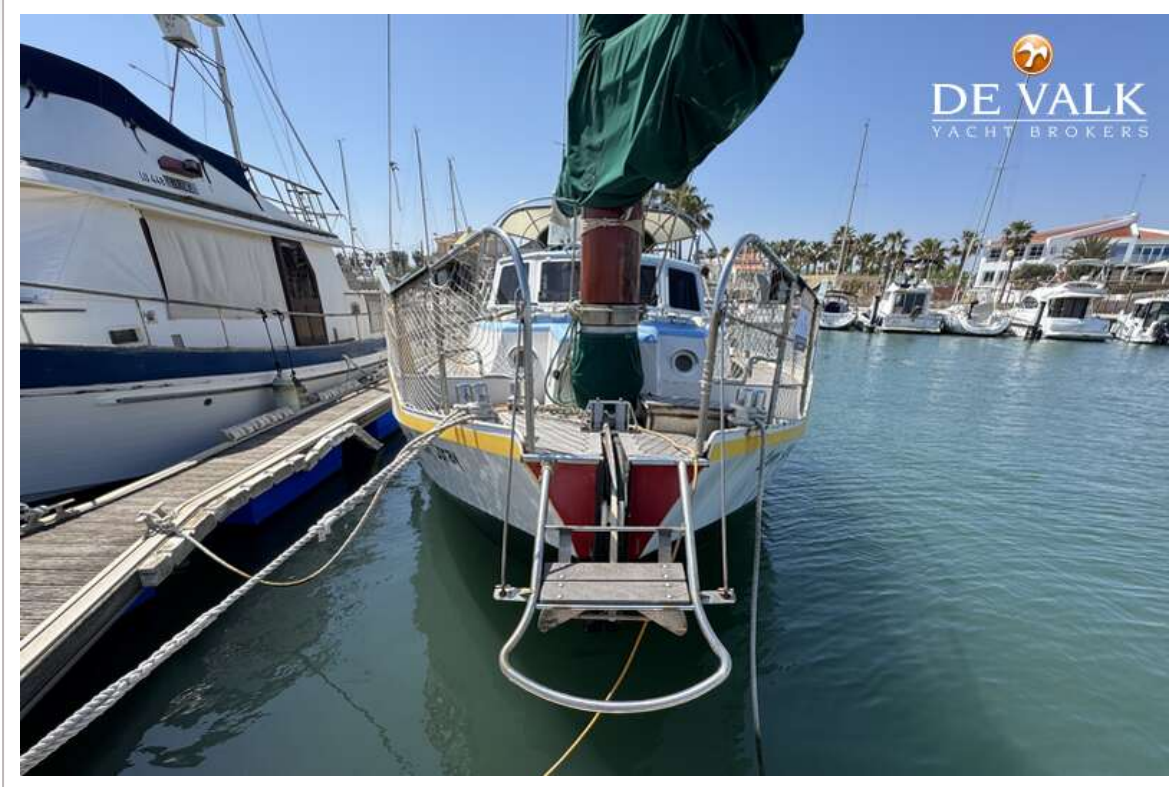


# BRUCE ROBERTS SPRAY 40C



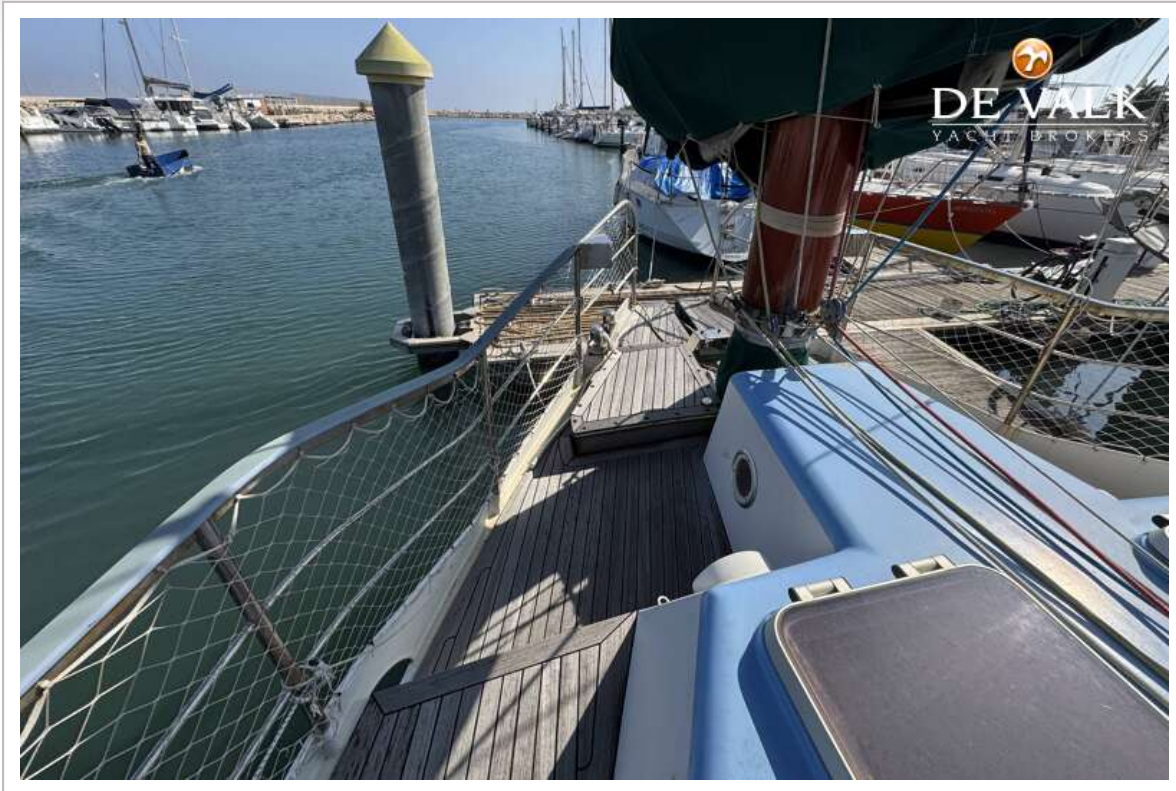


# BRUCE ROBERTS SPRAY 40C



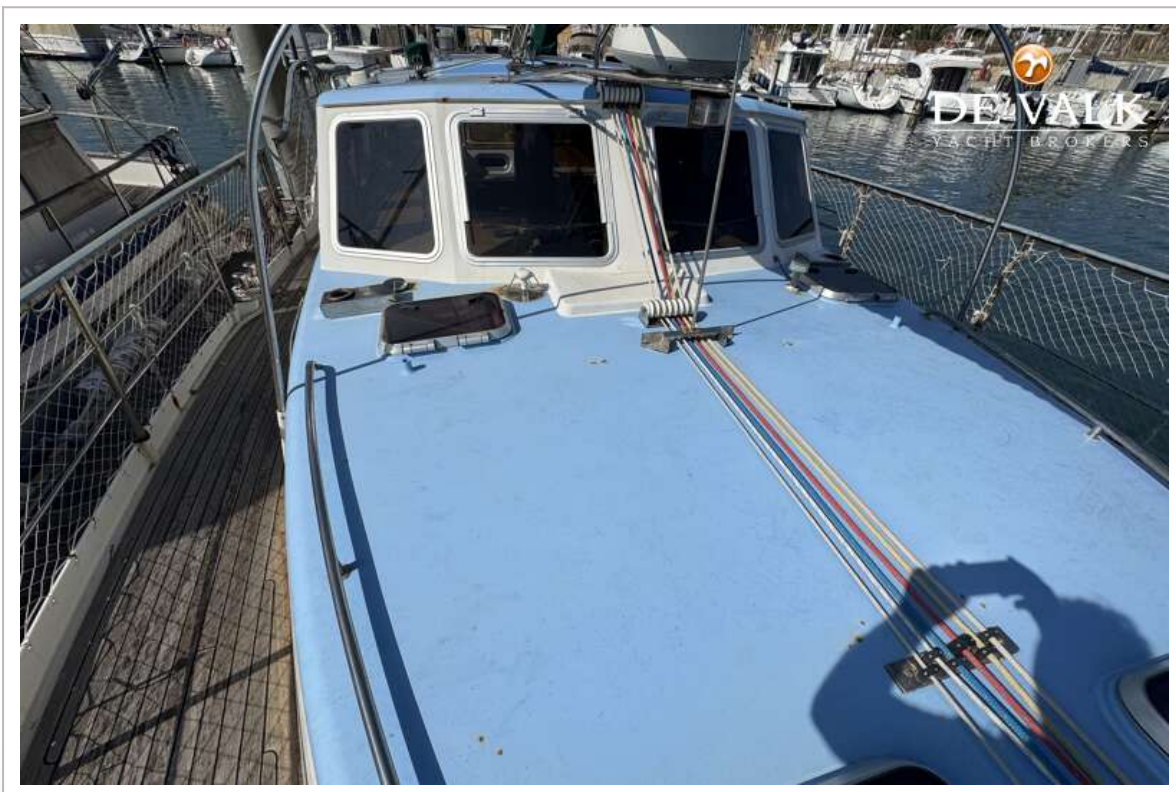
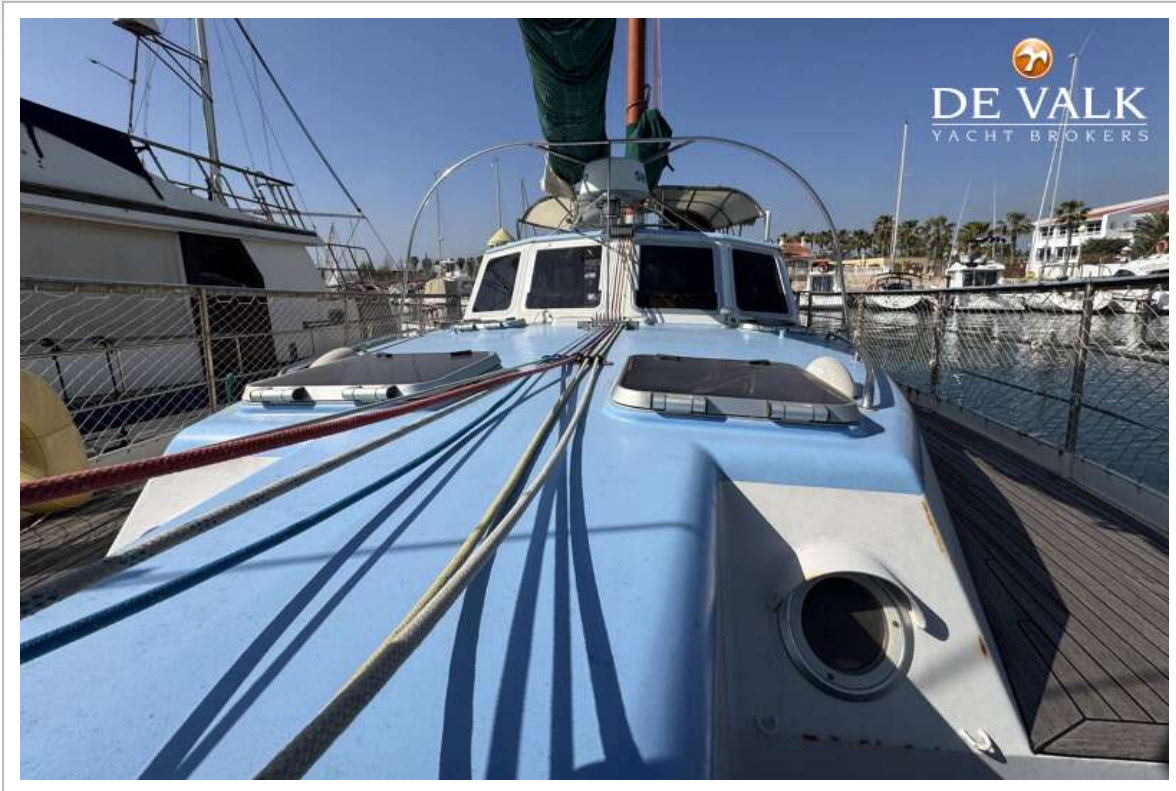


# BRUCE ROBERTS SPRAY 40C

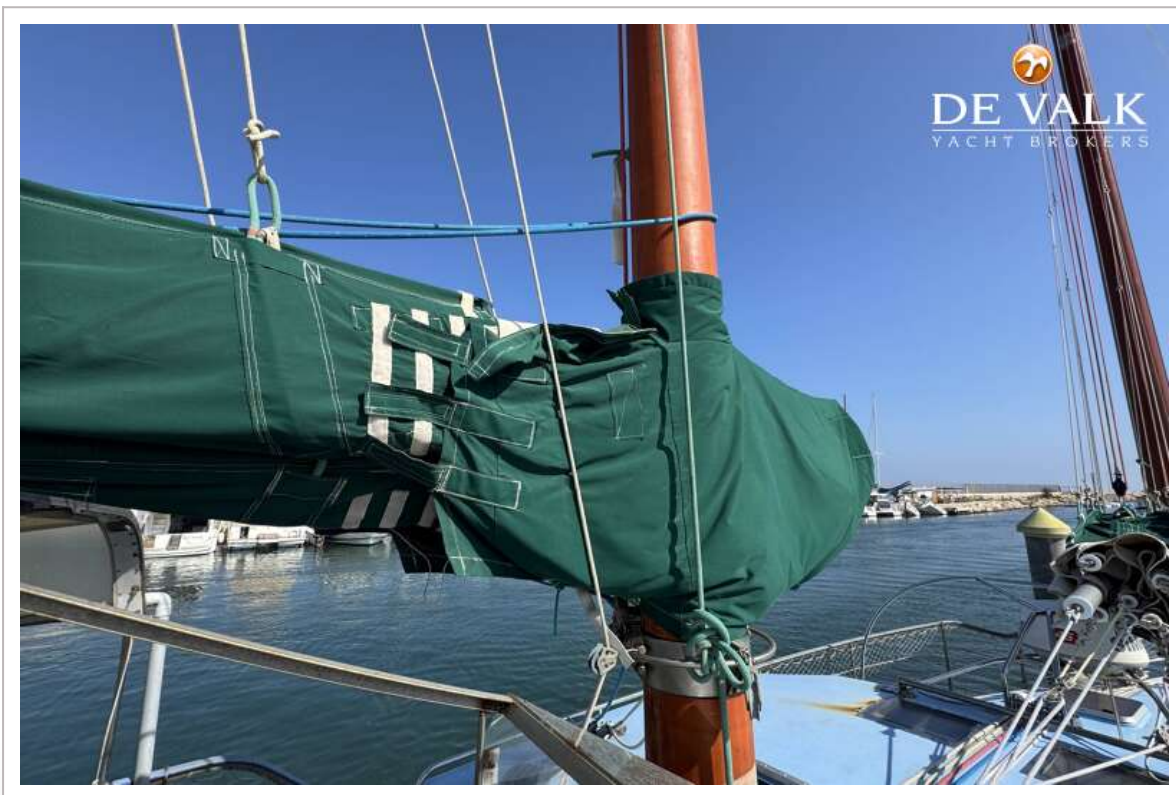




# BRUCE ROBERTS SPRAY 40C



# BRUCE ROBERTS SPRAY 40C



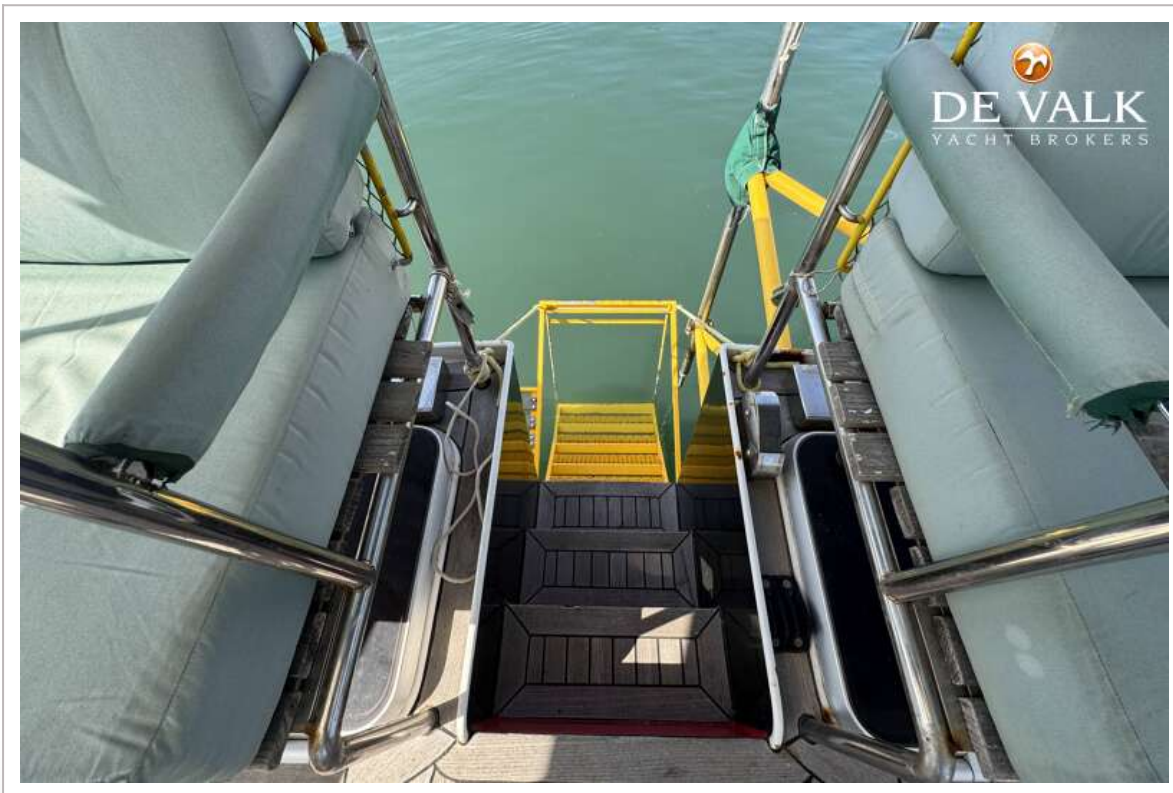


# BRUCE ROBERTS SPRAY 40C

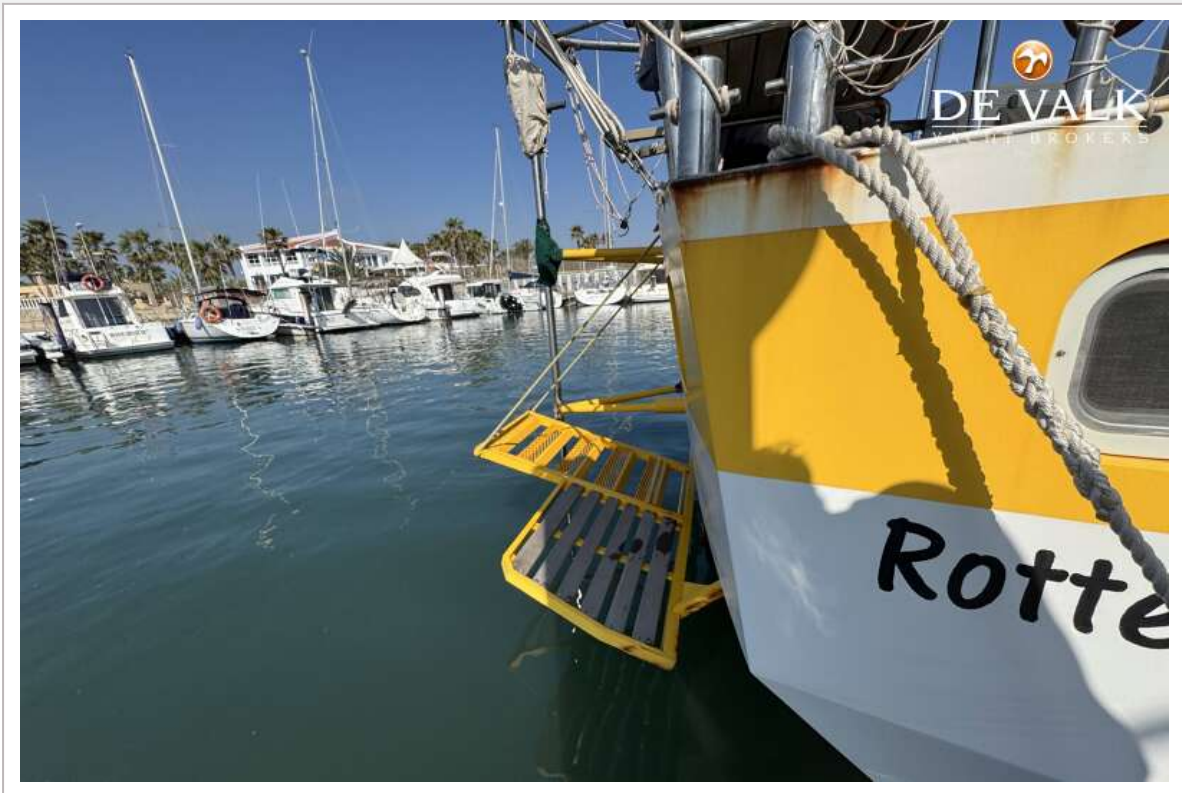




# BRUCE ROBERTS SPRAY 40C



# BRUCE ROBERTS SPRAY 40C

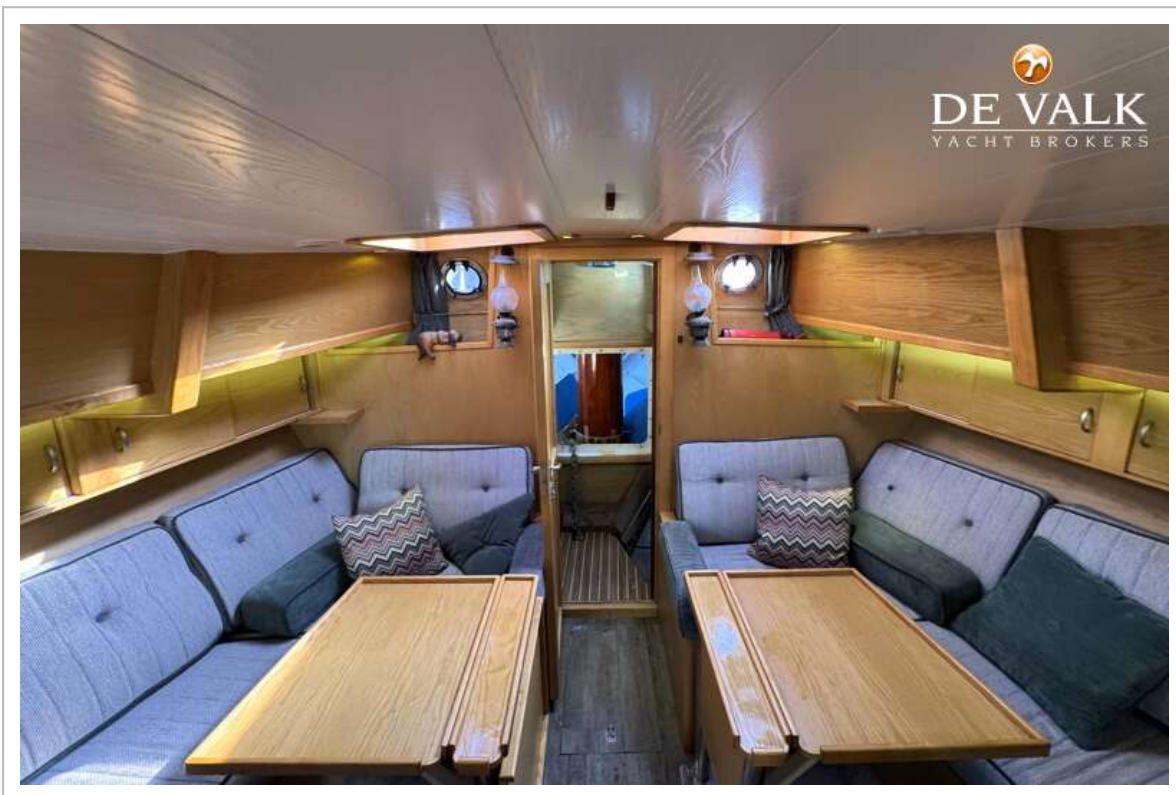
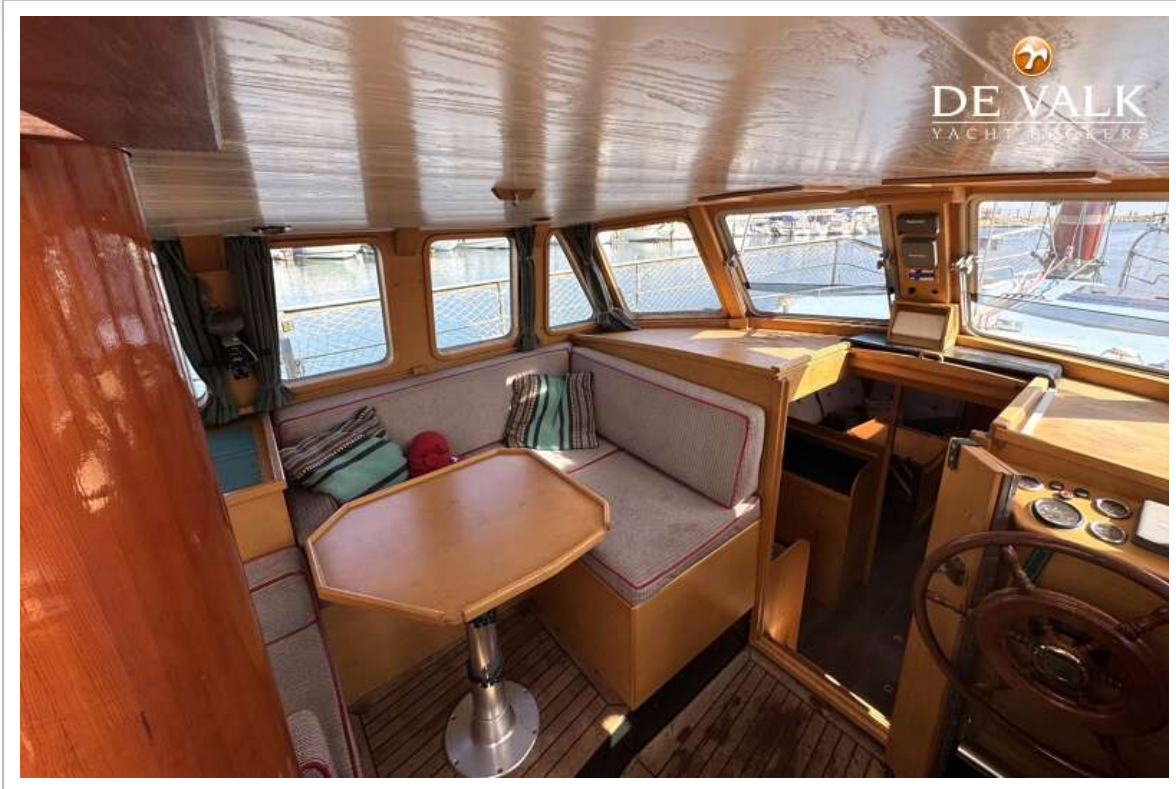




# BRUCE ROBERTS SPRAY 40C



# BRUCE ROBERTS SPRAY 40C

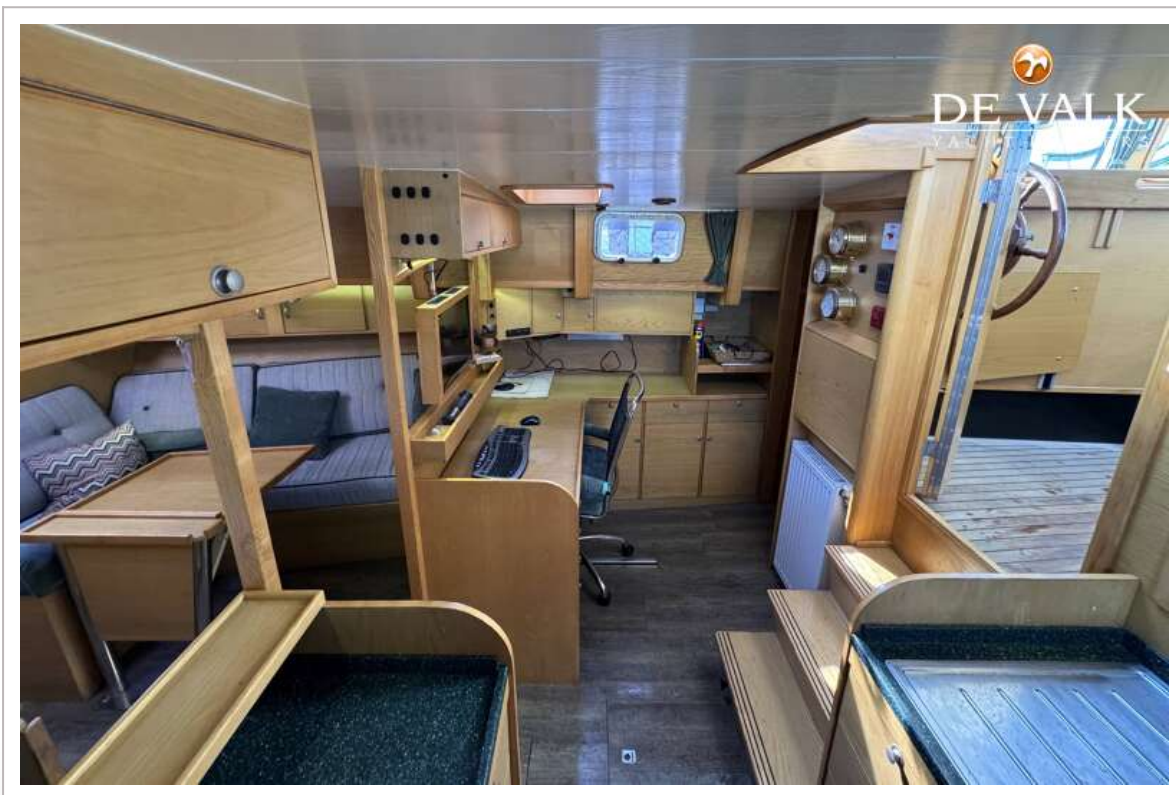




# BRUCE ROBERTS SPRAY 40C



# BRUCE ROBERTS SPRAY 40C

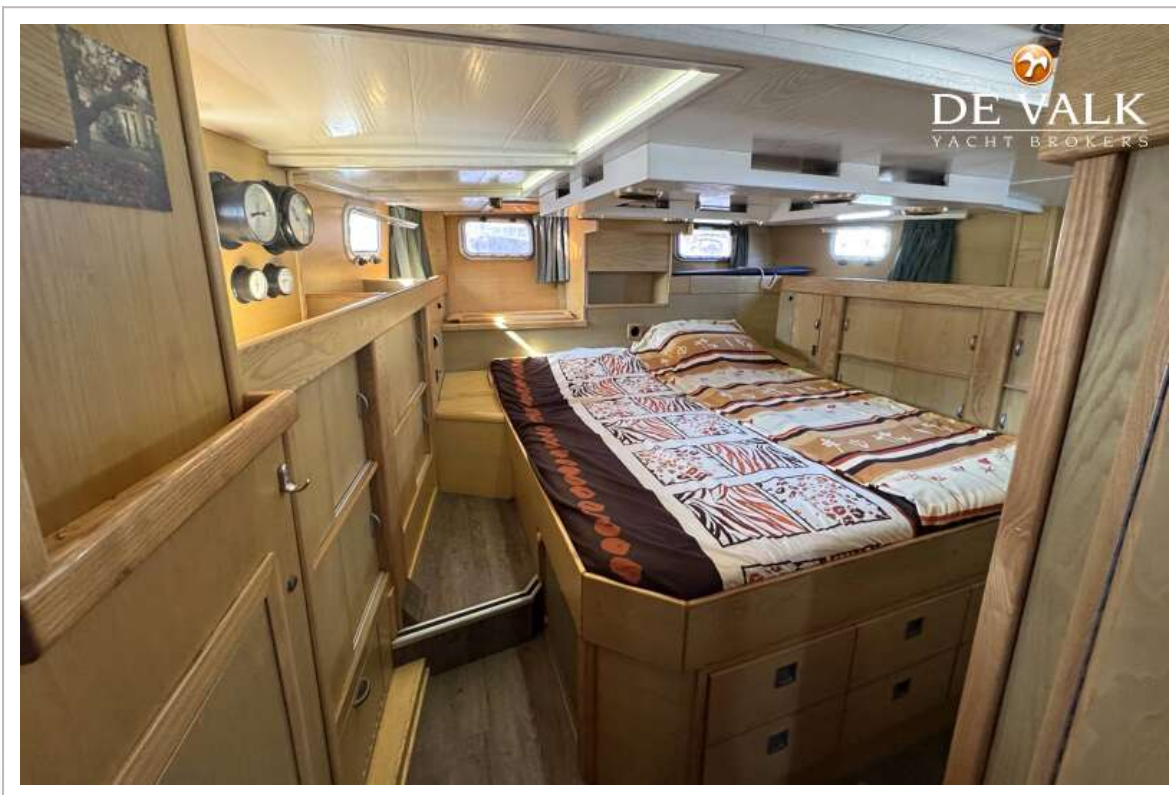




# BRUCE ROBERTS SPRAY 40C



# BRUCE ROBERTS SPRAY 40C





# BRUCE ROBERTS SPRAY 40C

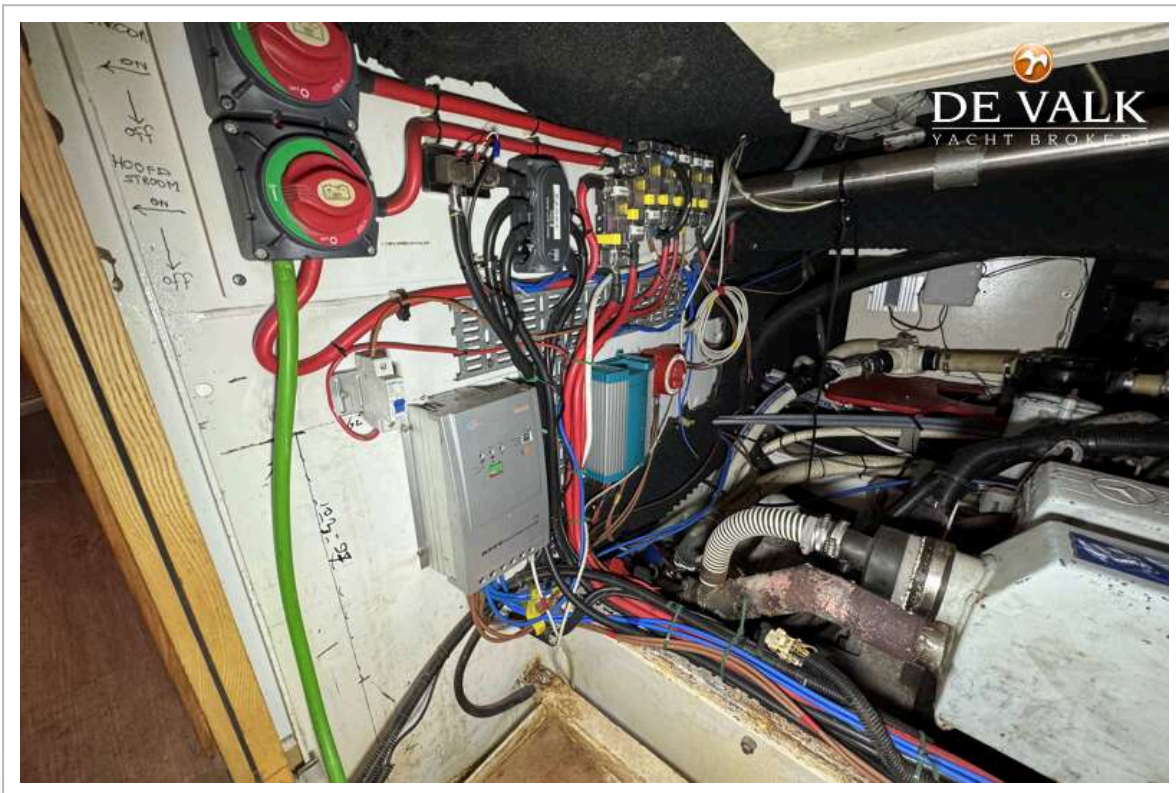
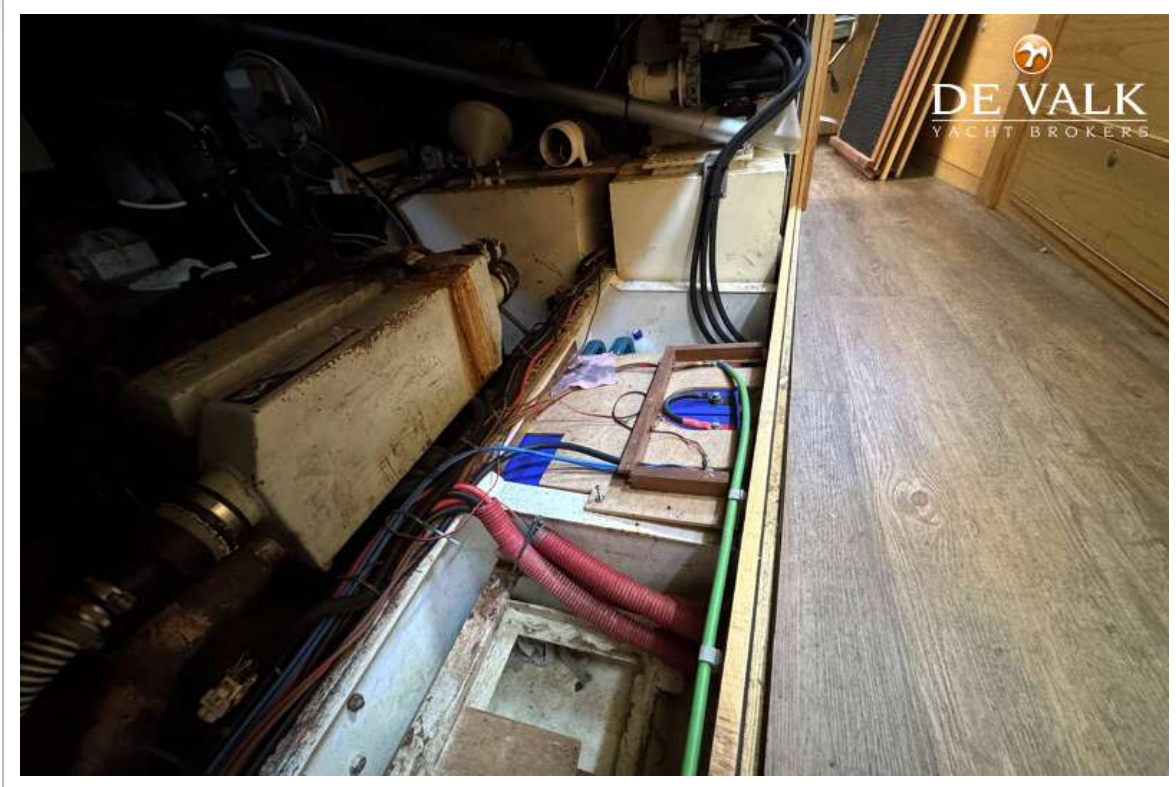


# BRUCE ROBERTS SPRAY 40C



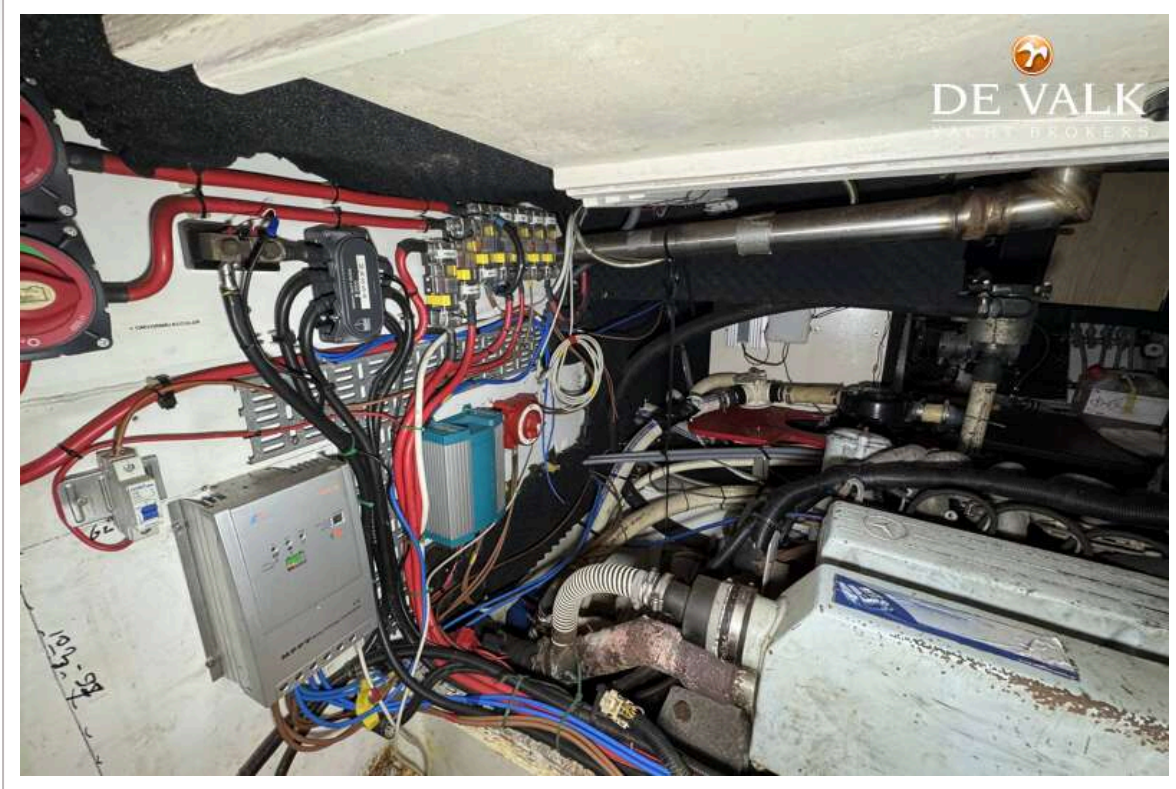


# BRUCE ROBERTS SPRAY 40C

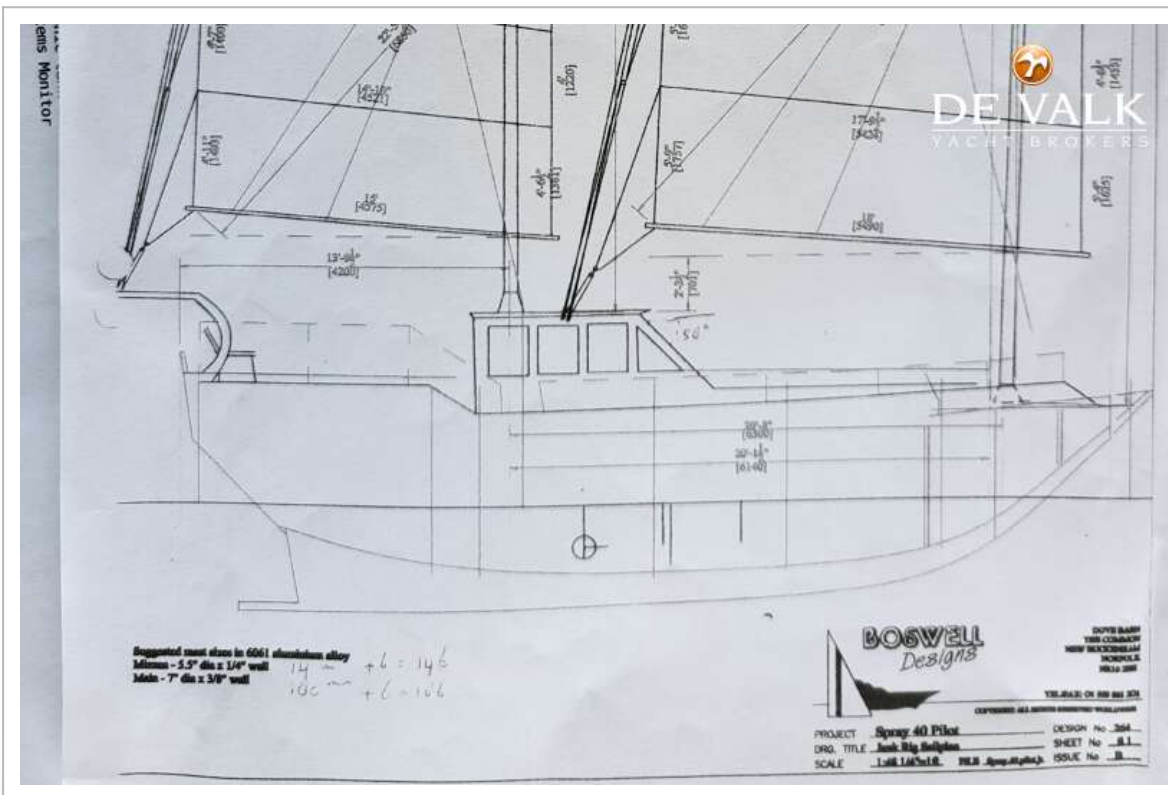




# BRUCE ROBERTS SPRAY 40C



# BRUCE ROBERTS SPRAY 40C





# BRUCE ROBERTS SPRAY 40C

