



DE VALK  
YACHT BROKERS



COUACH 2800 FLY



DE VALK  
YACHT BROKERS

# COUACH 2800 FLY

## BROKER'S COMMENTS

This modern Couach 2800 Fly was built in 2004. She accommodates up to 10 guests in 4 cabins. Her stand out red hull and designed interior make her one of a kind. With a maximum speed of 32 knots, she is perfect for cruising with family and friends wherever you want. Fully equipped, she is in turn-key condition, a must see!

*Alan Deasti*

## SPECIFICATIONS

<b>Dimensions</b>	30.80 x 6.61 x 1.60 (m)	<b>Builder</b>	
<b>Built</b>	2005	<b>Cabins</b>	4
<b>Material</b>	GRP	<b>Berths</b>	10
<b>Engine(s)</b>	2 x MTU 2000 diesel	<b>Hp/Kw</b>	2 x 1,950.00 (hp), 1,433.00 (kw)
<b>Asking price</b>	€ 1.290.000 (VAT Paid)	<b>Lying</b>	contact Antibes

## CONTACT

<b>Sales office</b>	De Valk Antibes	<b>Telephone</b>	+33 492 91 0202
<b>Address</b>	2, Avenue de Verdun 06600 Antibes France	<b>E-mail</b>	antibes@devalk.nl

## DISCLAIMER

These particulars are given in good faith as supplied but cannot be guaranteed.



# COUACH 2800 FLY

## GENERAL

Model	COUACH 2800 FLY
Type	motor yacht
LOA (m)	30,80
Beam (m)	6,61
Draft (m)	1,60
Year built	2005
Designer	Tba
Displacement (t)	90
CE norm	A
Hull material	GRP
Deck material	teak
Flybridge	With a wet bar, a jacuzzi and a table with seats
Fuel tank (litre)	20.000
Freshwater tank (litre)	2.500
Extra info	Hull repainted 2019

## ACCOMMODATION

Cabins	4
Berths	10
Crew cabin	yes
Aft deck	With a dining table and a sofa
Saloon	With two large sofas
Heating	
Air-conditioning	reverse cycle airco
Dining room	With a large table seating 10 guests
Galley	Open on the dining room
Countertop	
Sink	
Cooker	
Oven	yes



# COUACH 2800 FLY

Extractor	yes
Gas alarm	yes
Microwave	yes
Fridge	yes
Freezer	yes
Dishwasher	yes
Owners cabin	double bed With a desk and a sofa
Wardrobe	hanging/drawers/shelves
Bathroom	en suite
Toilet	en suite
Wash basin	in the bathroom X2
Bath tub	en suite
Guest cabin 1	double bed
Wardrobe	hanging/drawers/shelves
Bathroom	en suite
Toilet	en suite
Wash basin	in the bathroom
Shower	en suite
Guest cabin 2	twin single
Wardrobe	hanging/drawers/shelves
Bathroom	en suite
Toilet	en suite
Wash basin	in the bathroom
Shower	en suite
Guest cabin 3	twin single
Wardrobe	hanging/drawers/shelves
Bathroom	En suite
Toilet	en suite
Wash basin	in the bathroom
Shower	en suite
Washing machine	yes



# COUACH 2800 FLY

## MACHINERY

No of engines	2
Make	MTU
Type	2000
HP	1950
kW	1433
Fuel	diesel
Maximum speed (kn)	32,00
Cruising speed (kn)	25,00
Consumption (l/hr)	375
Range (nm)	900
Engine hours	2600
Drive	shaft
Bowthruster	
Sternthruster	
Electric bilge pump	yes
Generator	2x35kW
Shorepower	
Watermaker	yes

## NAVIGATION

Compass	Ritchie
Depth sounder/log	yes
Repeater	yes
VHF	yes
Autopilot	Simrad ce54
Radar/GPS/plotter	yes
Navtex	yes
PC connection	yes
Camera	yes
Navigation lights	yes



# COUACH 2800 FLY

Searchlight yes

## EQUIPMENT

Bimini yes

Cockpit cushions yes

Cockpit table yes

Cockpit chairs yes

Bathing platform yes

Boarding ladder aluminum

Gangway yes

Deck shower yes

Anchor

Anchor chain yes

Windlass

Capstan yes

Dinghy 350 Jet Zodiac 90Hp

Life raft

TV yes

DVD player yes

Surround Sound System yes

Extra info 1500 Kawasaki scooter

Extra info Snorkeling gear

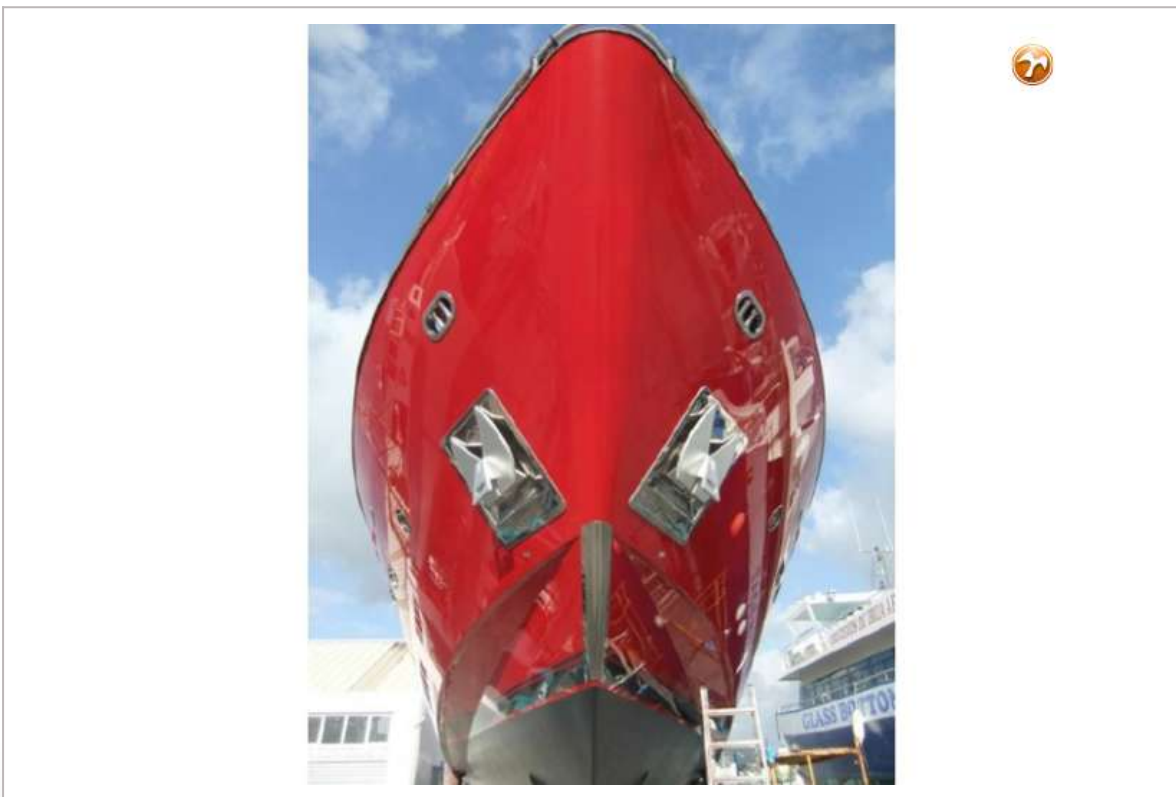
Extra info Wake board and water skis



# COUACH 2800 FLY

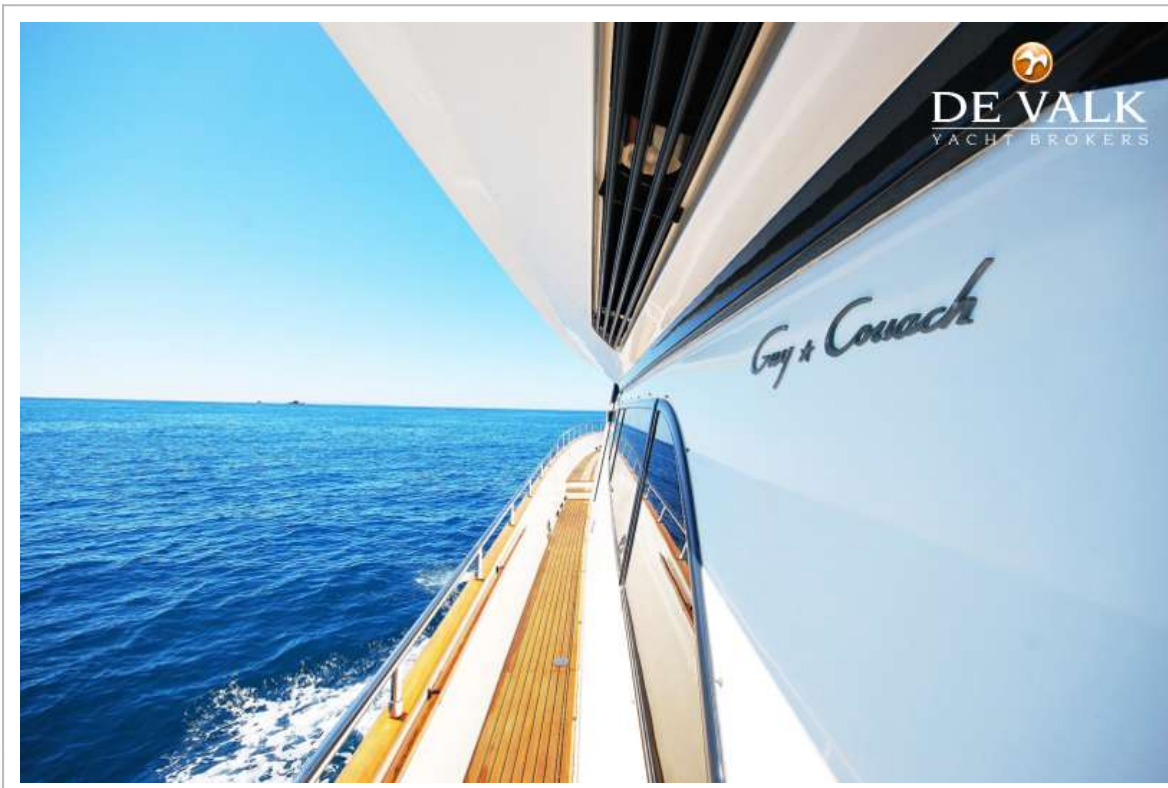
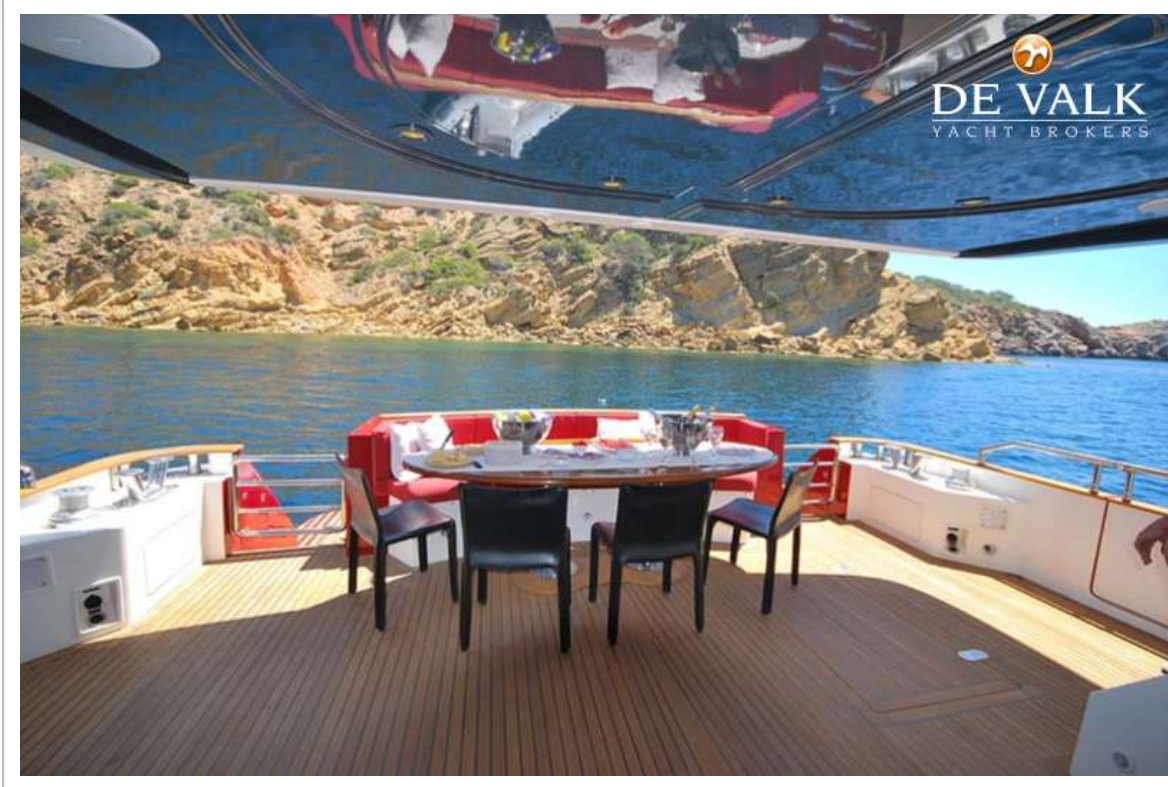


# COUACH 2800 FLY

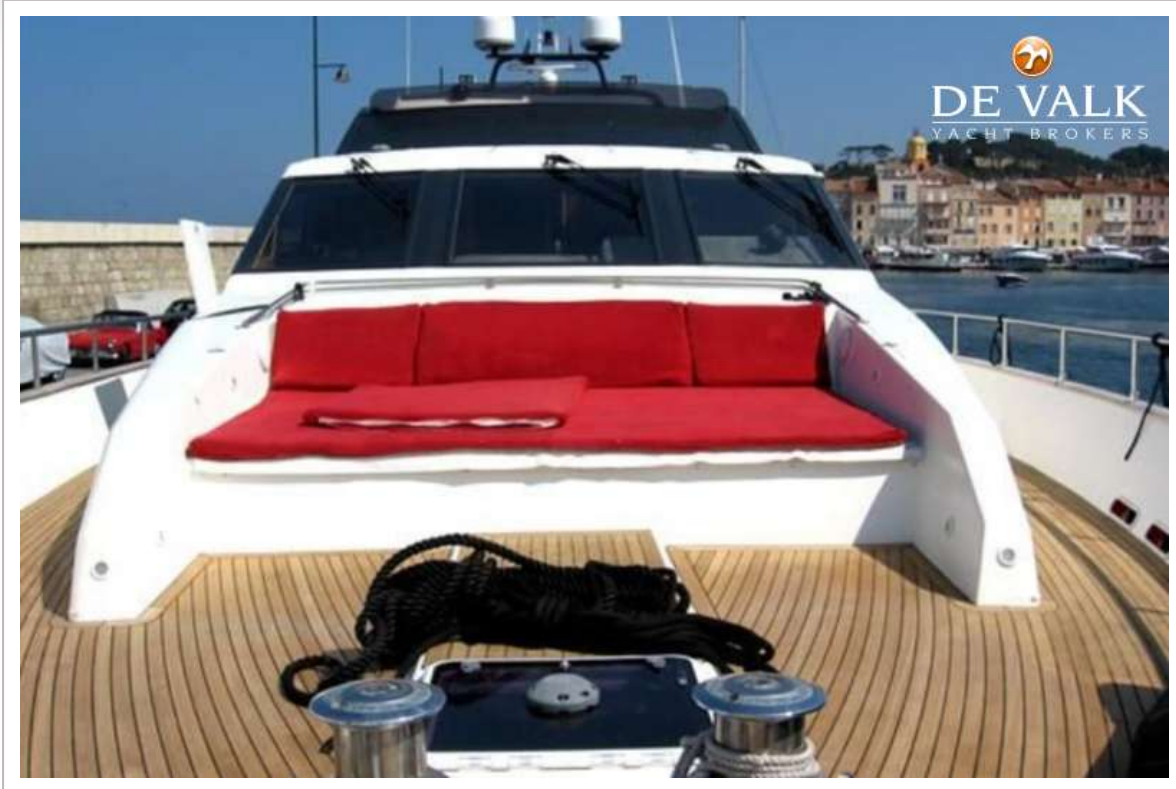




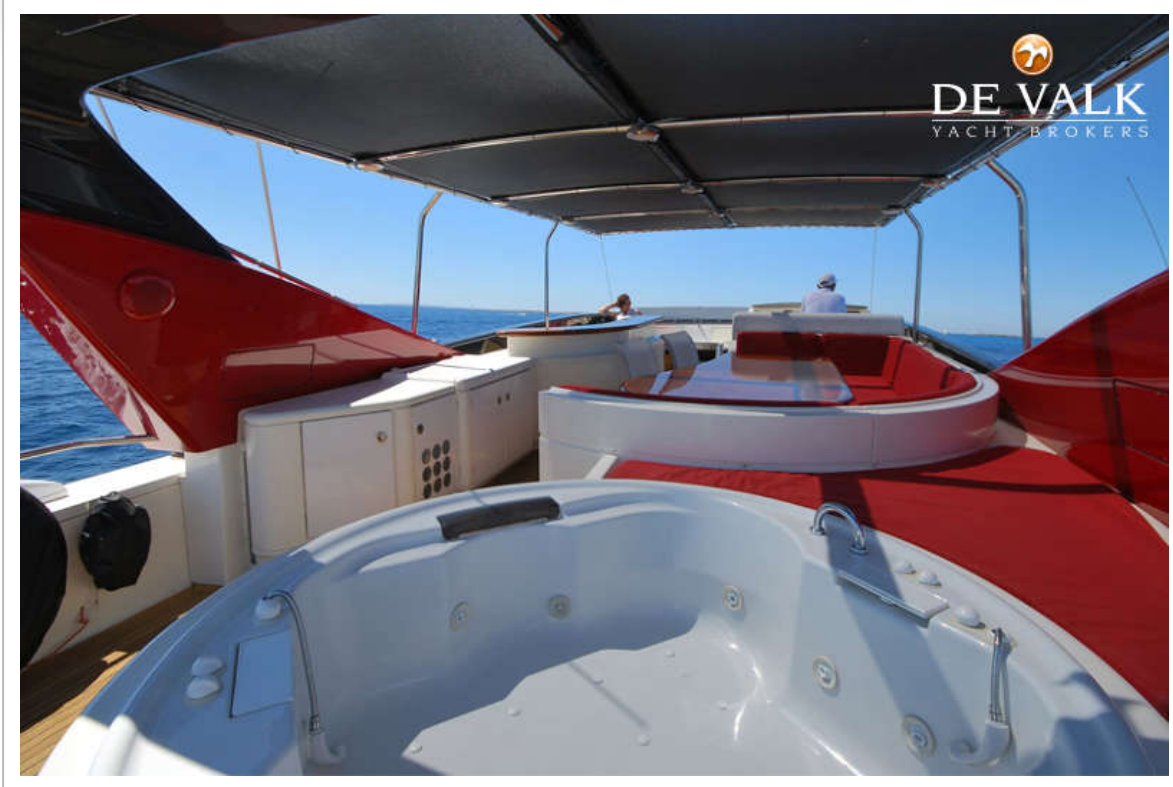
# COUACH 2800 FLY



# COUACH 2800 FLY



# COUACH 2800 FLY



# COUACH 2800 FLY



# COUACH 2800 FLY



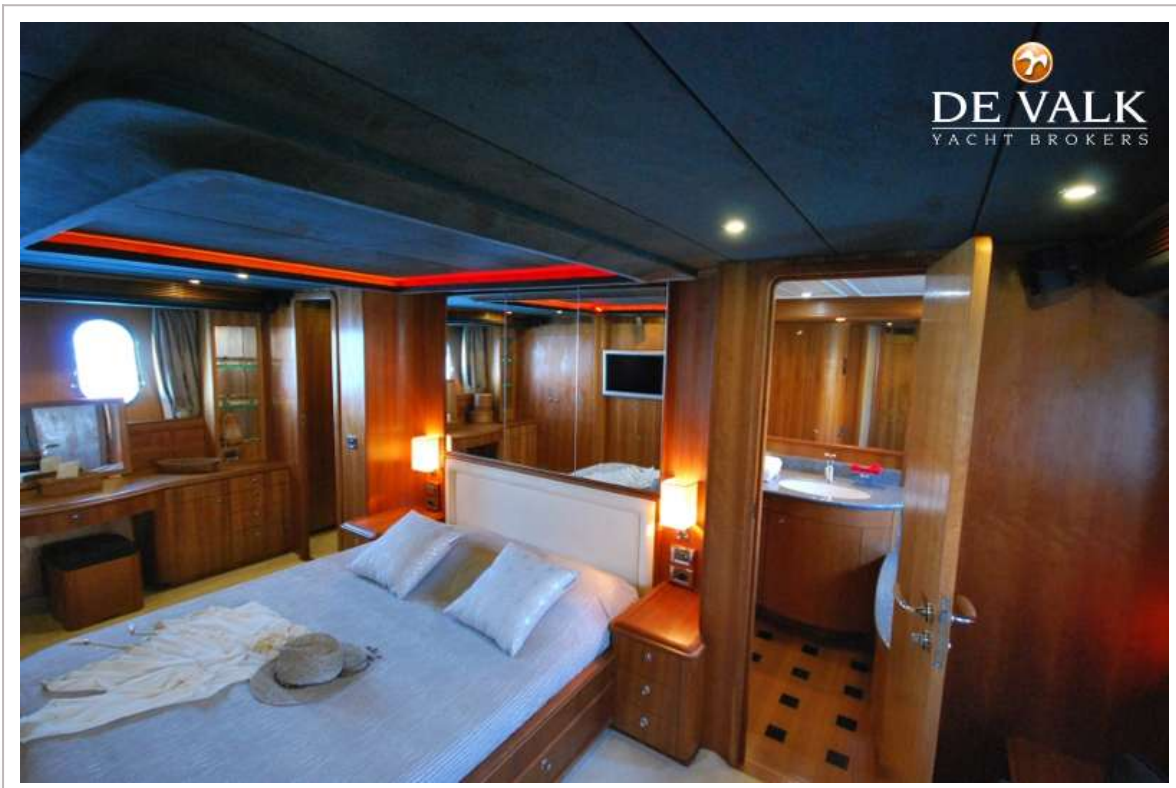
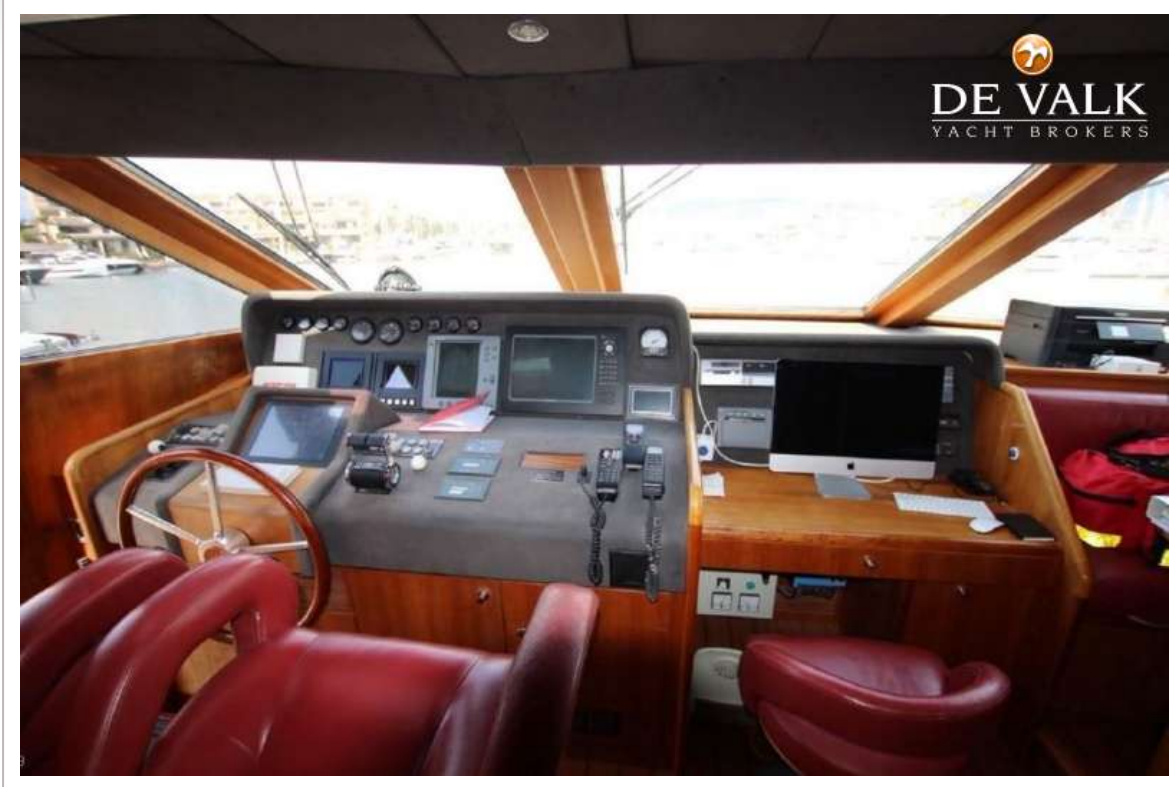
# COUACH 2800 FLY



# COUACH 2800 FLY



# COUACH 2800 FLY

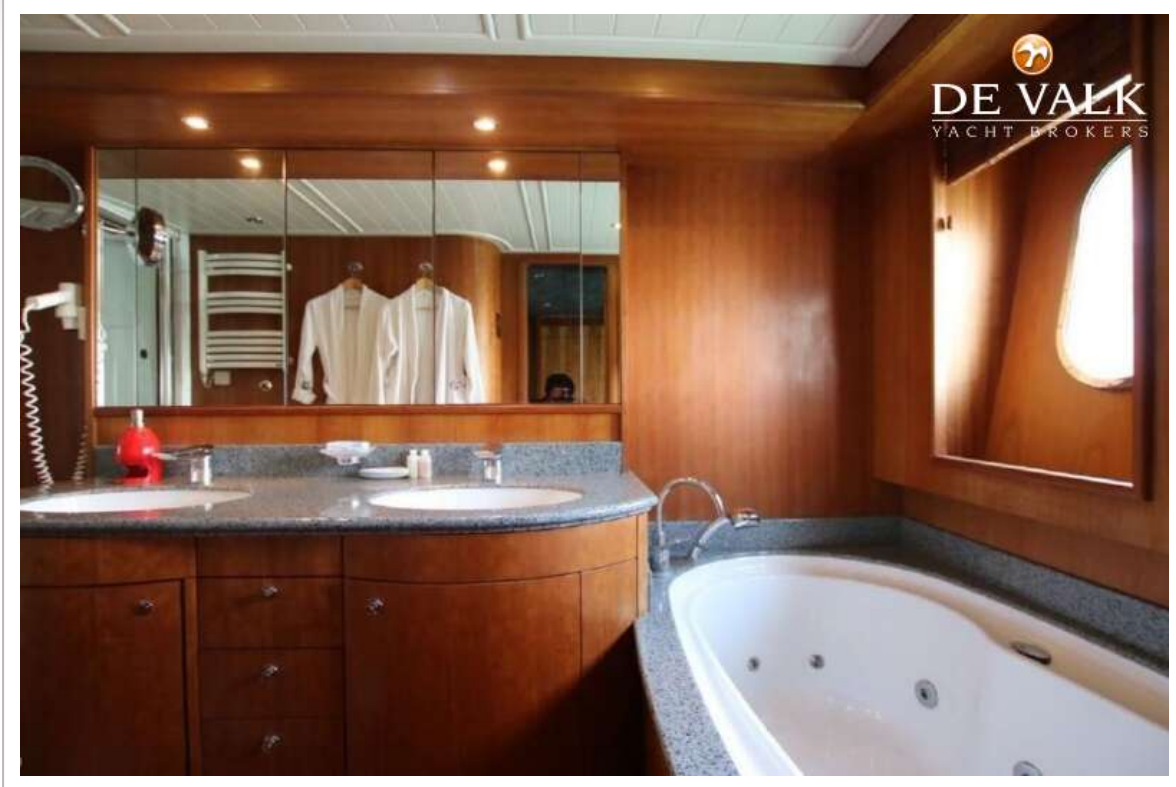




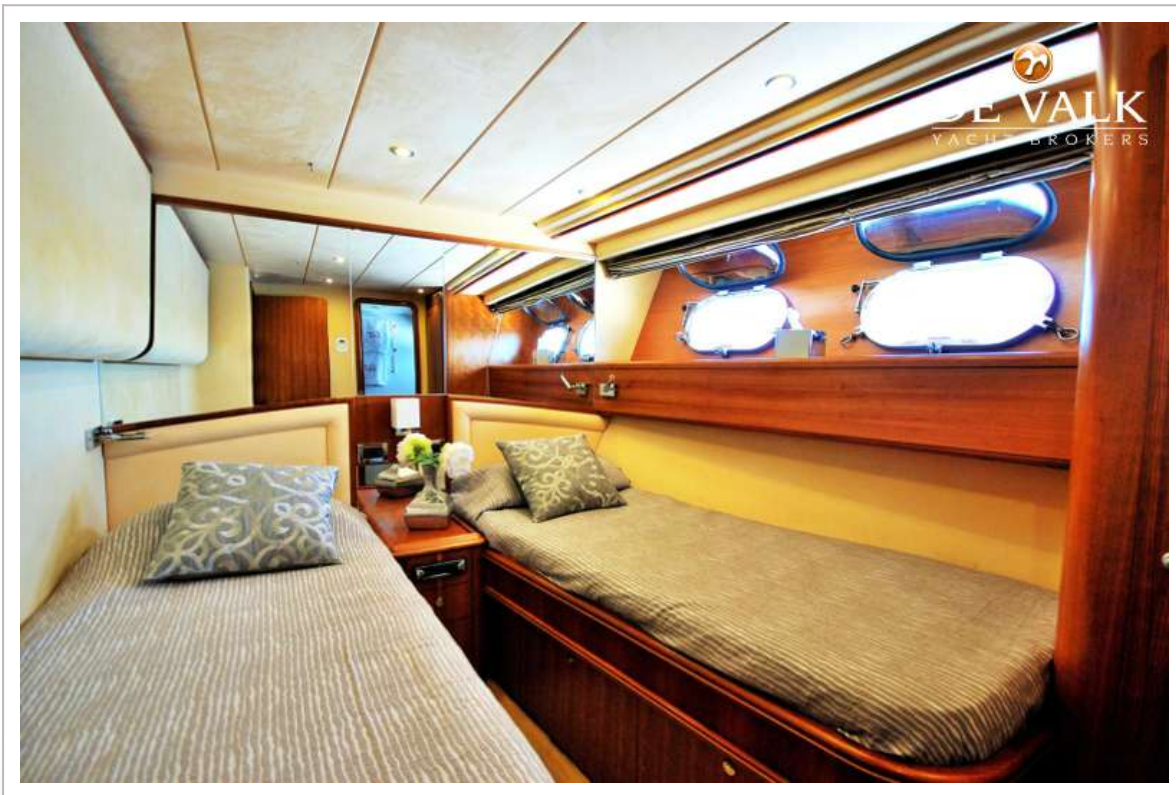
# COUACH 2800 FLY



# COUACH 2800 FLY



# COUACH 2800 FLY



# COUACH 2800 FLY

