



DE VALK  
YACHT BROKERS



## STANDFAST 56



DE VALK  
YACHT BROKERS

# STANDFAST 56

## BROKER'S COMMENTS

Standfast 56 is a German Frers design, built by Standfast Yacht / Frans Maas in the Netherlands. A super sailing cruising yacht. Easy to handle with hydraulics and electric winches. Extensively renovated in 2016. Very well maintained and well equipped with a young sailing wardrobe. Ready for new adventures, viewable at a great starting place; IBIZA

*Robert Corden*

## SPECIFICATIONS

<b>Dimensions</b>	16.81 x 4.85 x 2.50 (m)	<b>Builder</b>	Standfast Yachts Breskens
<b>Built</b>	1991	<b>Cabins</b>	3
<b>Material</b>	GRP	<b>Berths</b>	8
<b>Engine(s)</b>	1 x Volvo Penta TMD 41D diesel	<b>Hp/Kw</b>	145 (hp), 106.58 (kw)
<b>Asking price</b>	€ 398.000 (VAT Paid)	<b>Lying</b>	elsewhere / not at sales office

## CONTACT

<b>Sales office</b>	De Valk Ibiza	<b>Telephone</b>	+34 634 342 444
<b>Address</b>	Carrer del Pedrer 4, Ca Na Palava 07814 Santa Eulalia, Balears Spain	<b>E-mail</b>	ibiza@devalk.nl

## DISCLAIMER

These particulars are given in good faith as supplied but cannot be guaranteed.



# STANDFAST 56

## GENERAL

<b>Model</b>	STANDFAST 56
<b>Type</b>	sailing yacht
<b>LOA (m)</b>	16,81
<b>Beam (m)</b>	4,85
<b>Draft (m)</b>	2,50
<b>Air draft (m)</b>	24,00
<b>Headroom (m)</b>	2,10
<b>Year built</b>	1991
<b>Builder</b>	Standfast Yachts Breskens
<b>Country</b>	The Netherlands
<b>Designer</b>	German Frers
<b>Displacement (t)</b>	24
<b>CE norm</b>	NA
<b>Hull material</b>	GRP
<b>Hull colour</b>	blue
<b>Hull shape</b>	round-bilged
<b>Keel type</b>	fin keel
<b>Superstructure material</b>	GRP
<b>Deck material</b>	GRP
<b>Deck finish</b>	teak
<b>Superstructure deck finish</b>	non-skid paint
<b>Cockpit deck finish</b>	teak
<b>Antifouling (year)</b>	2019
<b>Dorades</b>	4x
<b>Window frame</b>	aluminium
<b>Window material</b>	polycarbonate
<b>Deckhatch</b>	with sun screens Goyot
<b>Portholes</b>	aluminium 5
<b>Insulation</b>	foam In summer & winter
<b>Fuel tank (litre)</b>	1 tank 500



# STANDFAST 56

Level indicator (fuel tank)	yes
Freshwater tank (litre)	2 tanks / 1000
Level indicator (freshwater)	yes
Blackwater tank (litre)	450
Wheel steering	cable steering
Emergency tiller	yes
More info on hull	Hull and deck GRP/Foam Core sandwich material
More info on paintwork	Hull / Deck / cockpit painted/Awlgripp (2015)

## ACCOMMODATION

Cabins	3
Berths	8
Crew cabin	yes
Crew berths	2
Interior	teak
Floor	teak and holly Black stripes
Saloon	2x table: 7 & 4 seats
Headroom saloon (m)	2,10
Heating	diesel ducted hot air Webasto
Navigation center	yes
Chart table	yes
Aft Cabin	yes
Dinette	yes
Galley	yes
Countertop	plastic
Sink	stainless steel 2x
Cooker	calor gas Force10 4-pits
Oven	Force10
Fridge	250 ltr
Freezer	150 ltr
Wine cooler	yes



Hot water system	220V + engine 75 ltr (2018)
Water pressure system	electrical
Manual and/or foot pump	yes
Coffee maker	yes
Owners cabin	French bed
Bed length (m)	2,05
Wardrobe	hanging/drawers/shelves
Bathroom	en suite
Toilet	en suite
Toilet system	manual
Wash basin	in the bathroom
Shower	en suite
Guest cabin 1	bunk bed Special mattresses
Bed length (m)	2,00
Wardrobe	hanging and shelves
Bathroom	shared
Toilet	shared
Toilet system	manual
Wash basin	in the bathroom
Shower	shared
Guest cabin 2	bunk bed Special mattresses
Bed length (m)	2,00
Wardrobe	hanging and shelves
Bathroom	shared
Toilet	shared
Toilet system	manual
Wash basin	in the bathroom
Shower	shared
Crew cabin(s)	V-berth

## MACHINERY



# STANDFAST 56

No of engines	1
Make	Volvo Penta
Type	TMD 41D
HP	145
kW	106.58
Fuel	diesel
Year installed	1991
Year of overhaul	2007 fully rebuilt
Maximum speed (kn)	9
Cruising speed (kn)	8
Consumption (l/hr)	6
Range (nm)	1000
Engine hours	1206
Drive	shaft
Shaft seal	replaced in 2018 PSS
Engine controls	bowden cable (2018)
Gearbox	mechanical
Exhaust	watercooled
Propeller type	feathering Maxprop
Propeller blades	3
Propeller shaft material	stainless steel
Shaft lubrication	water
Manual bilge pump	2x
Electric bilge pump	1x normal, 1x high capacity 2x
Bilge alarm	yes
Electrical installation	24/12/240
Generator	ALLPA 5 Kw (2016)
Running hours generator	12
Batteries	yes
Start battery	with crossover 2x 140 Ah (2016)
Service battery	4x 240 Ah (2020)
Generator battery	12 V (2020)



Battery monitor	yes
Battery charger/inverter	Mastervolt Mass Combi 24/2500-60 (2011)
Shorepower	with cable Single plug

## NAVIGATION

Compass	Suunto
Electric compass	B&G Hercules 600
Depth sounder	B&G Hercules 600
Log	B&G Hercules 600
Windset	B&G Hercules 600
Repeater	B&G Hercules 600(2002)
VHF	Sailor
Autopilot	B&G with cable remote control
Rudder angle indicator	at autopilot
Radar	Raymarine
Plotter/GPS	2x
Navtex	NX 500
AIS transponder	yes

## EQUIPMENT

Sprayhood	New 2020 beige
Sprayhood with grab rail	New 2020 beige
Bimini	New (2020)
Sun awning	New (2020)
Cockpit cushions	yes
Cockpit table	Teak
Boarding ladder	stainless steel
Gangway	foldable
Deck shower	yes
Anchor	Bruce 30 Kg
Anchor chain	100 mtr 10 mm



# STANDFAST 56

Windlass	electrical Lowfrance X3 (2017)
Dinghy	inflatable (2020)
Outboard	Mercury 4Pk
Outboard support	2x
Sea railing	wire
Grab rail (superstructure)	teak
Railing side opening gates	2x
Pushpit	yes
Pulpit	yes
Life raft (pers)	valise (or bag) 6 persons
Last life raft survey	expired
Safety lines on deck	yes
Binocular	yes
Radar reflector	yes
Fenders	9 with covers
Mooring lines	yes
Spare parts	yes
Tools	yes
Radio-cd player	Kenwood
Cockpit speakers	yes
Speakers in salon	yes
Clock - barometer	yes
Fire extinguisher	yes
Extra info	spreader lights and under water lights

## RIGGING

Rigging	sloop-cutter
Standing rigging	Rod Navtec (= old, checked 8 years ago by rigge/than ok)
Brand mast	Proctor White painted
Material mast	aluminium
Spreaders	3 sets





<b>Keel stepped mast</b>	with hydraulic for tuning
<b>Mainsail cover</b>	stag bag with Lazy Jacks
<b>Battcars</b>	yes
<b>Fully battened mainsail</b>	Lion Sails, 24000 DPI (2019)
<b>Cutterstay</b>	removable, hydraulic adjustable from helmstation
<b>Genoa</b>	135 % Lion Sails (2018)
<b>Genoa furler</b>	Reckmann
<b>Gennaker</b>	Lion Sails (2019)
<b>Spinnaker</b>	Lion Sails (2016)
<b>Staysail</b>	with hanks
<b>Reefing System</b>	slabreefing 3x reef
<b>Backstay adjuster</b>	hydraulic Navtec, adjustable from helmstation
<b>Boomvang</b>	hydraulic Navtec, adjustable from helmstation
<b>Primary sheet winch</b>	for main and Genoa 3 speed 2x Bariant 37 Alluminum electric
<b>Secondary sheet winch</b>	staysail & Spi 2x Bariant 32 Allu
<b>Genoa sheetwinches</b>	electric 2x Bariant 37 Allu
<b>Halyard winches</b>	2x Bariant 27 Allu Electric & 4x 28 Allu
<b>Multifunctional winches</b>	2x Bariant 27 allu
<b>Winchcovers</b>	yes
<b>Spi-pole</b>	carbon
<b>Jockey-pole</b>	aluminium
<b>Isolated backstay</b>	yes
<b>Extra info</b>	2x running back stays/Dyneema
<b>Extra info</b>	Harken deck gear



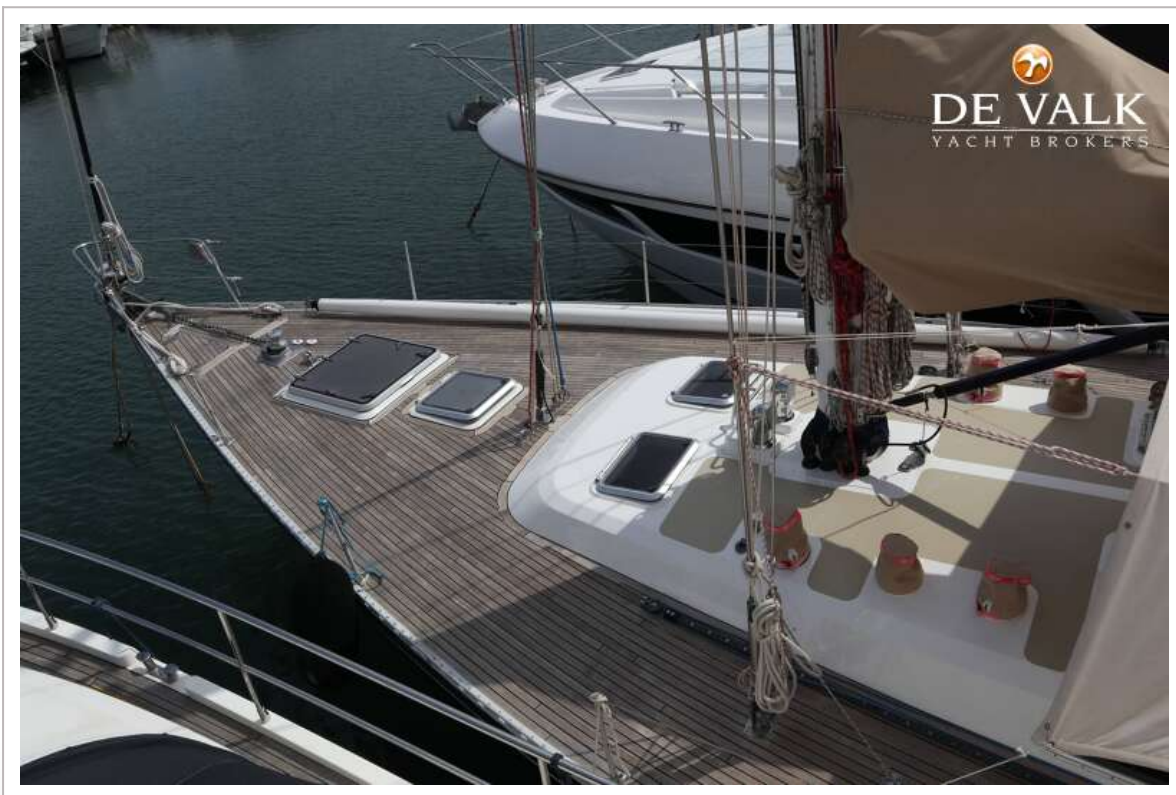
# STANDFAST 56



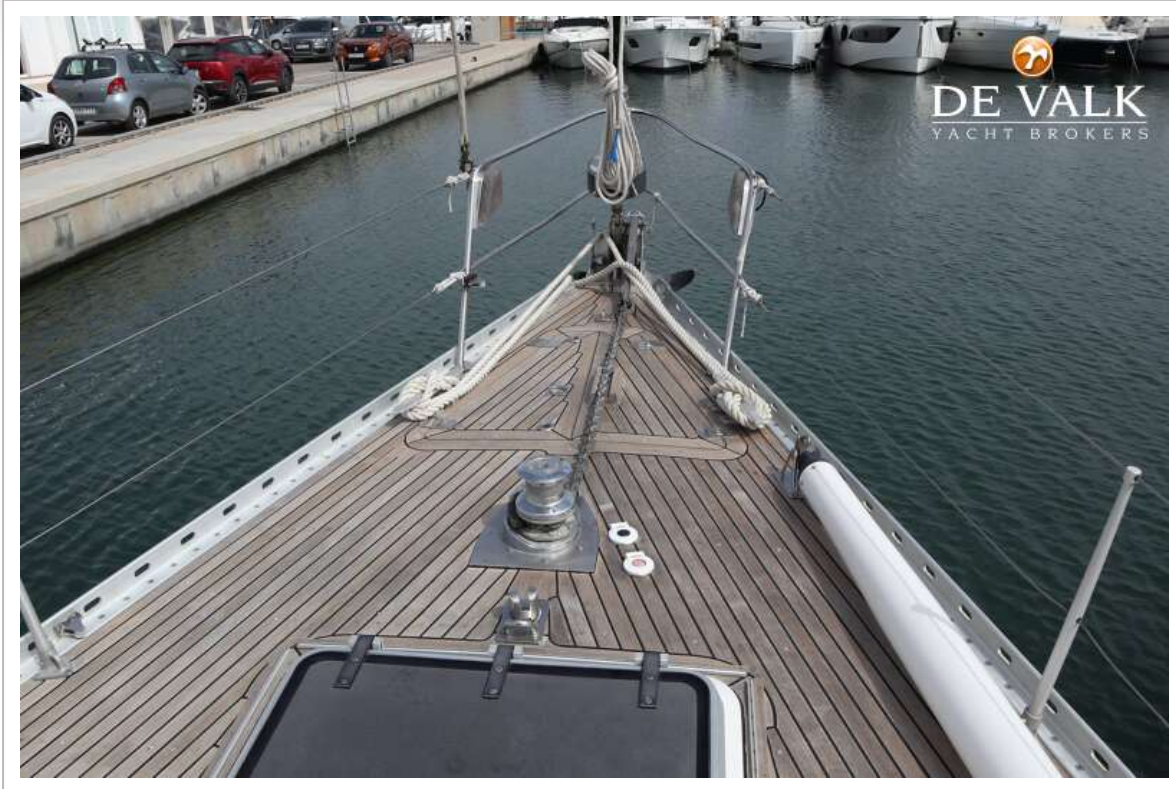
# STANDFAST 56



# STANDFAST 56



# STANDFAST 56



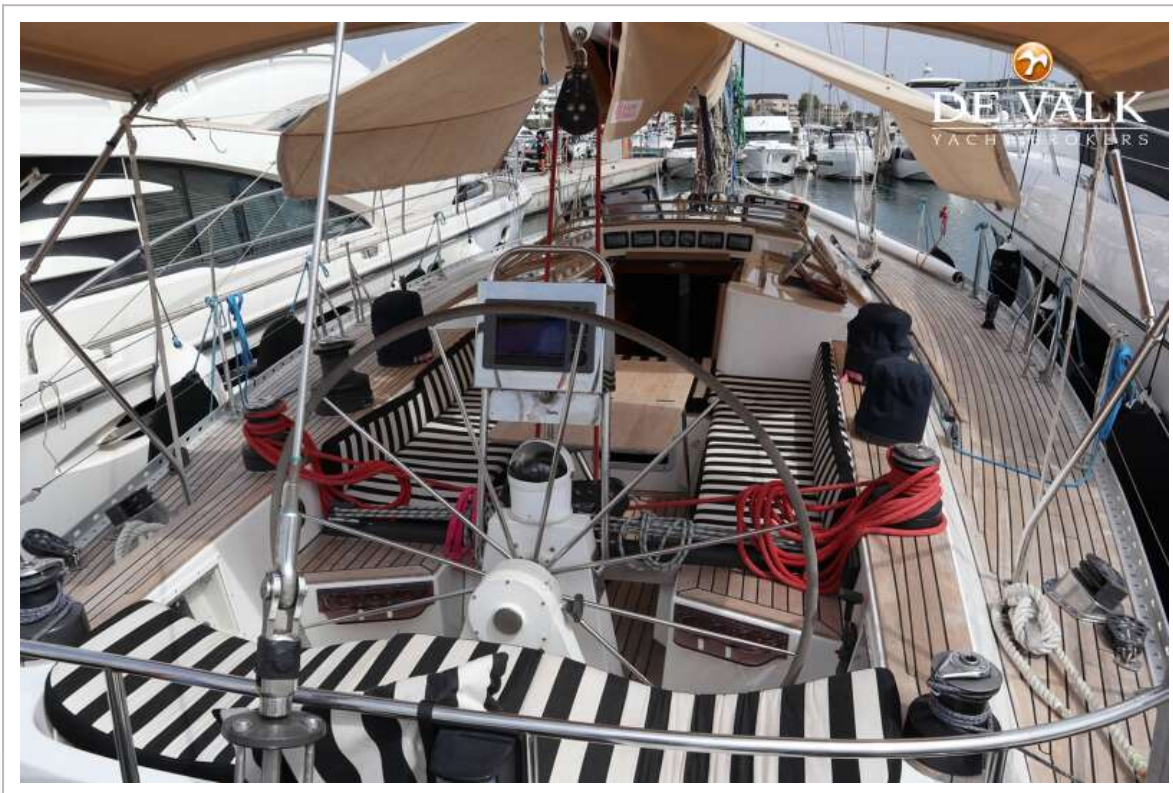
# STANDFAST 56



# STANDFAST 56

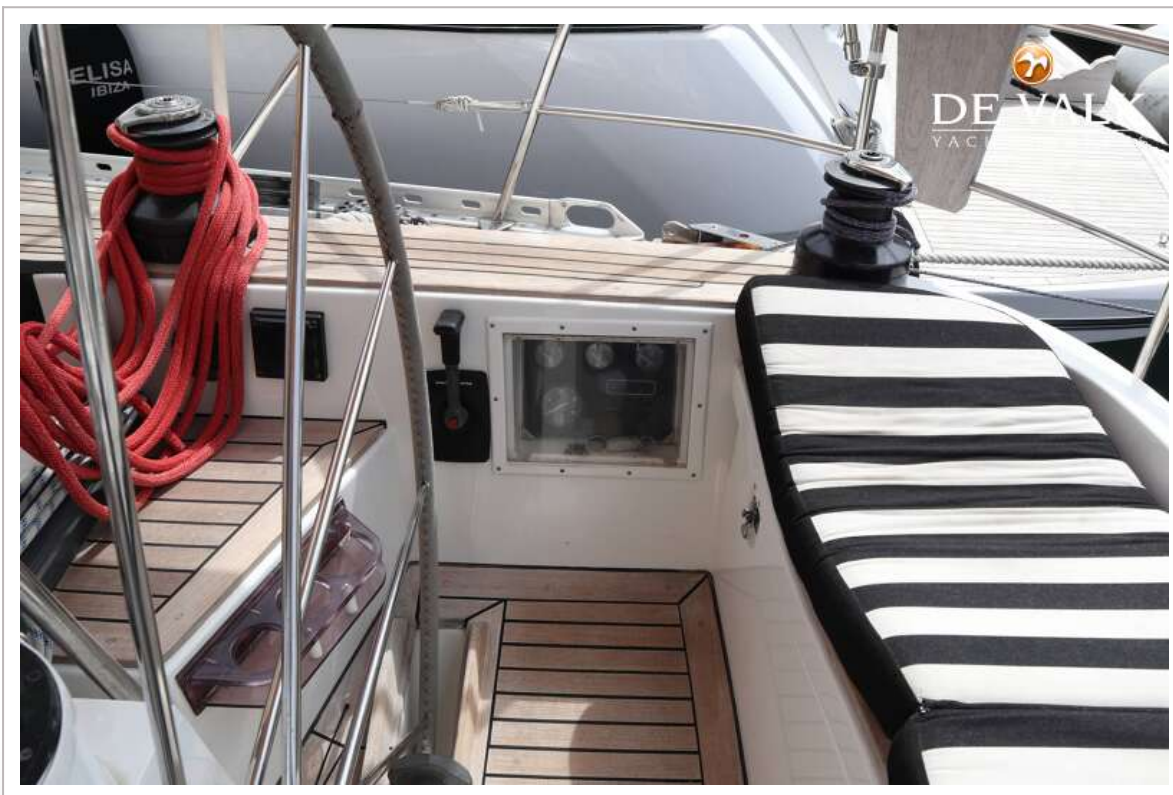


# STANDFAST 56





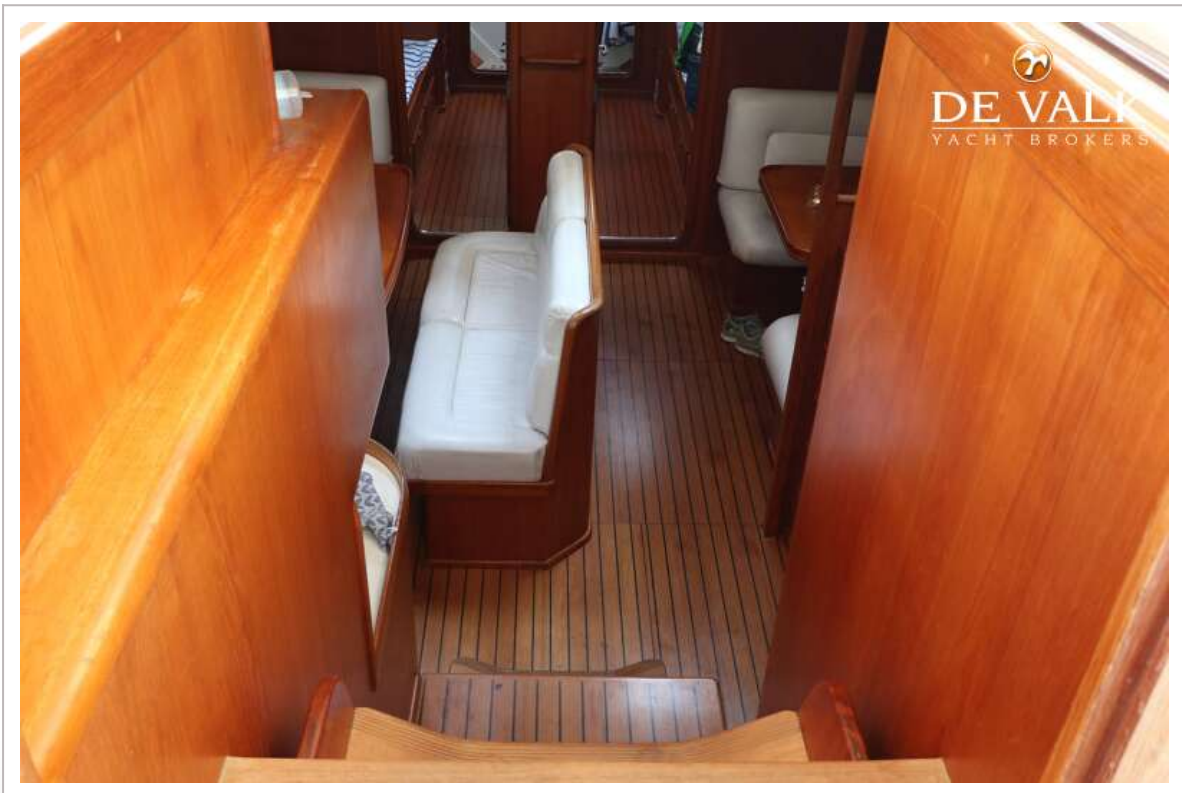
# STANDFAST 56



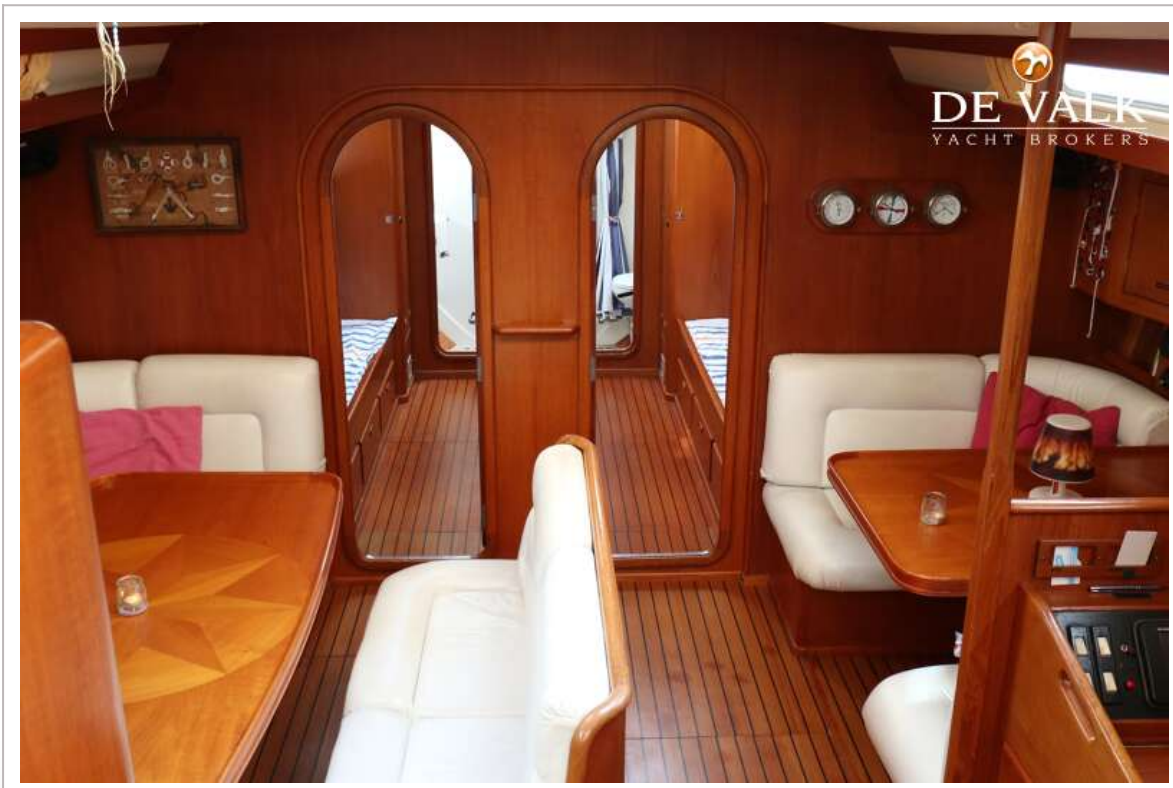
# STANDFAST 56



# STANDFAST 56



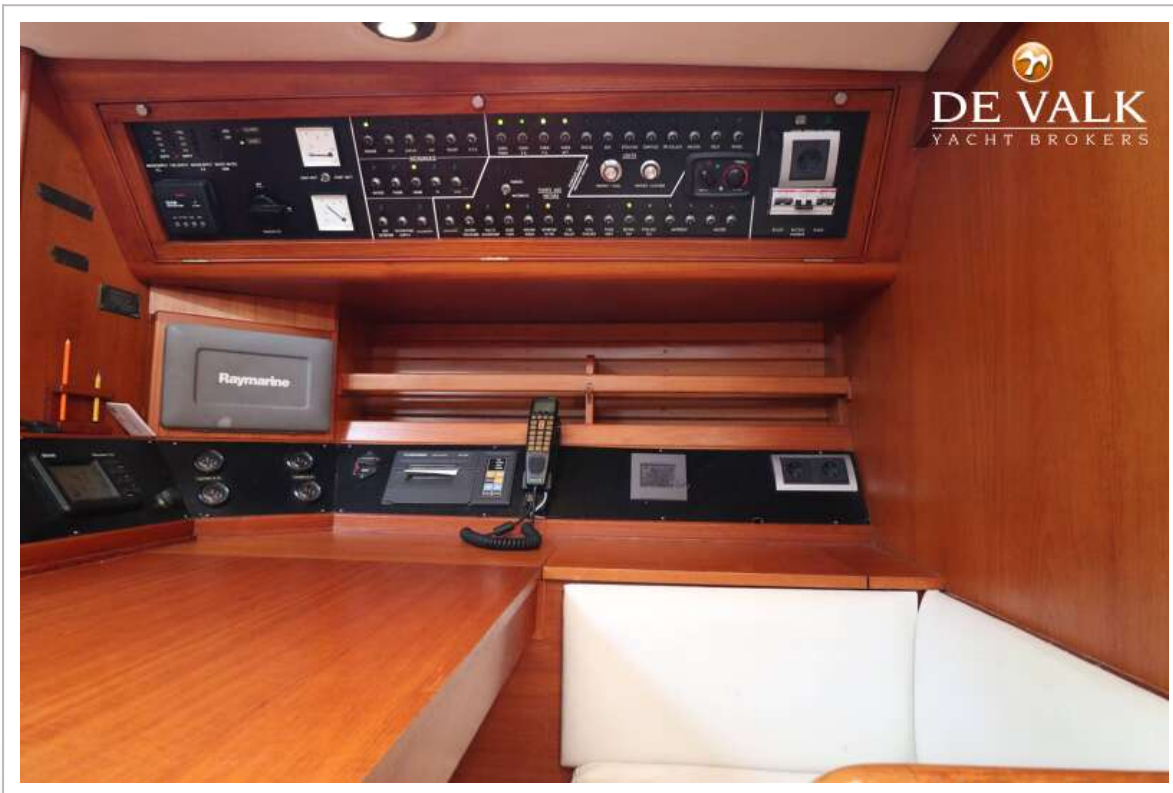
# STANDFAST 56



# STANDFAST 56



# STANDFAST 56



# STANDFAST 56

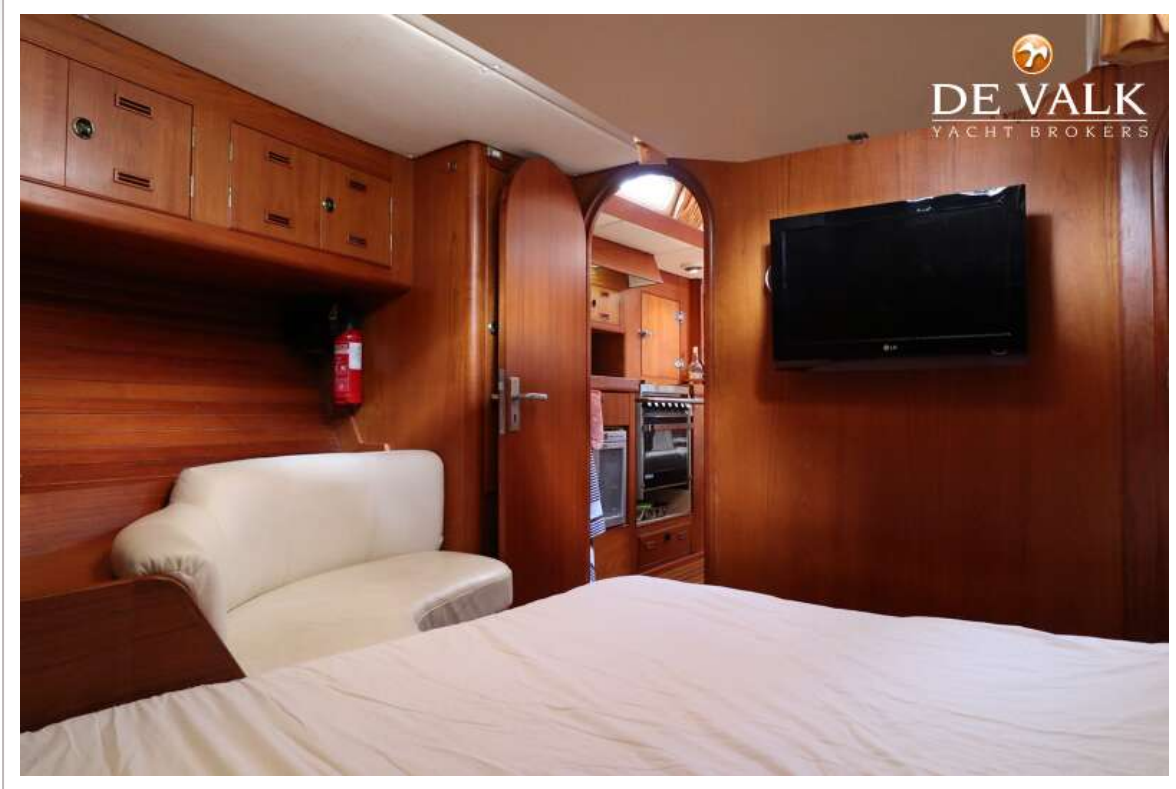


# STANDFAST 56

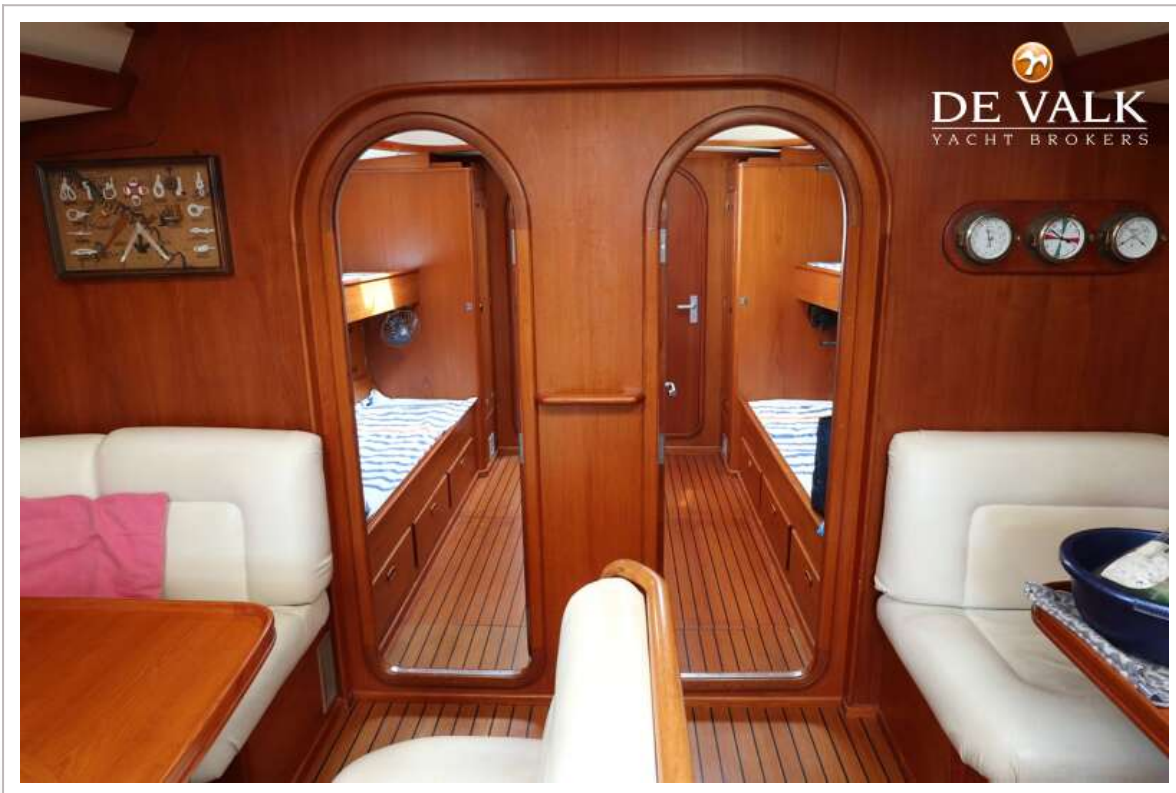




# STANDFAST 56

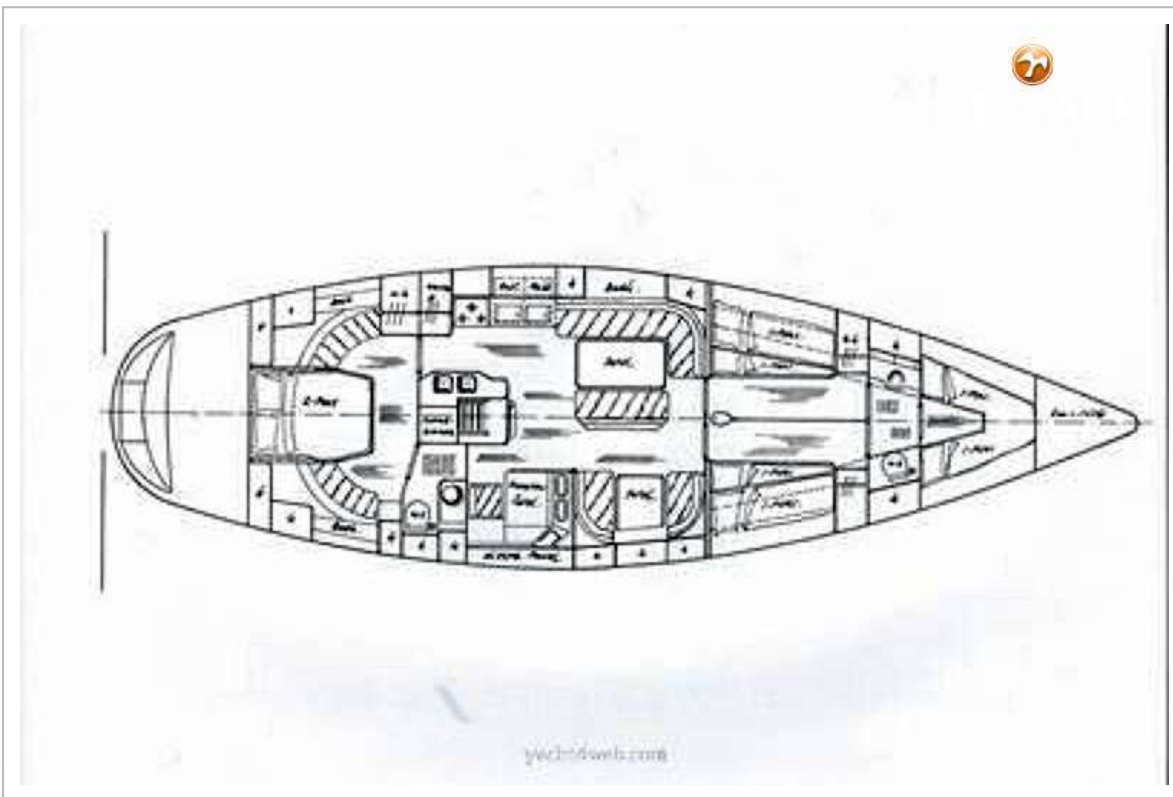


# STANDFAST 56

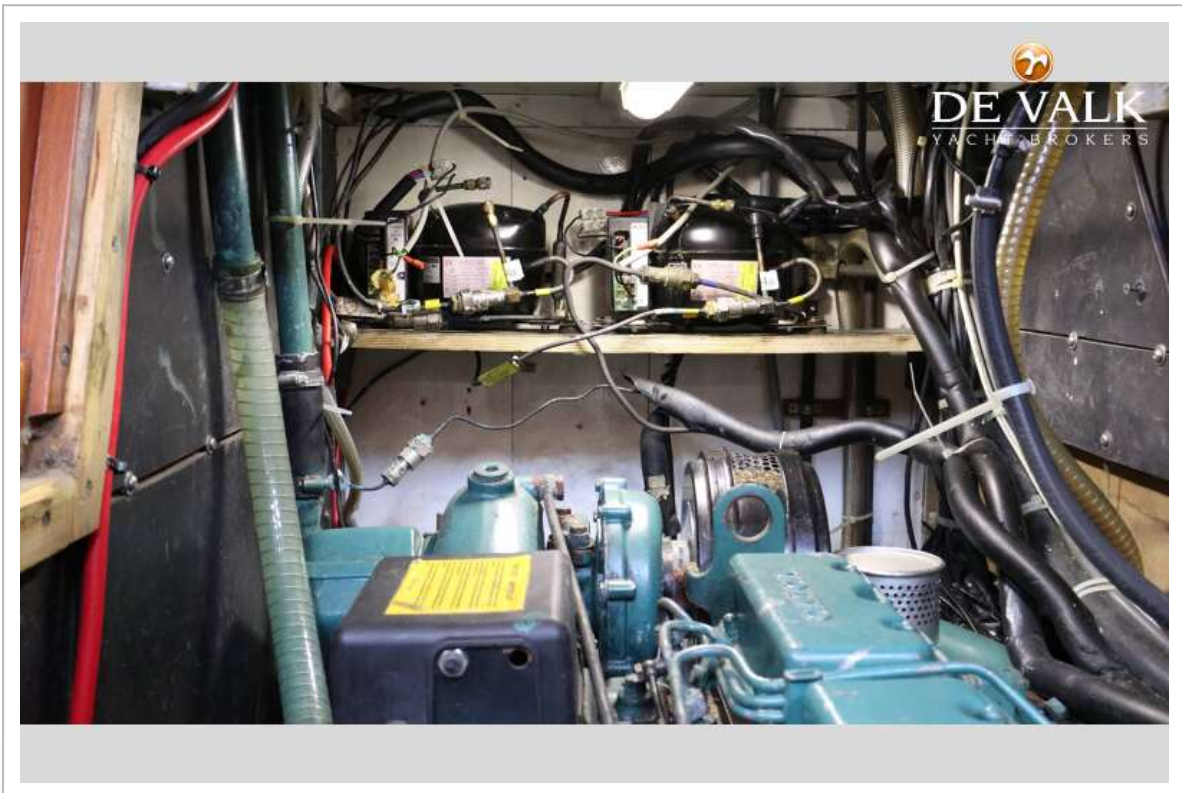
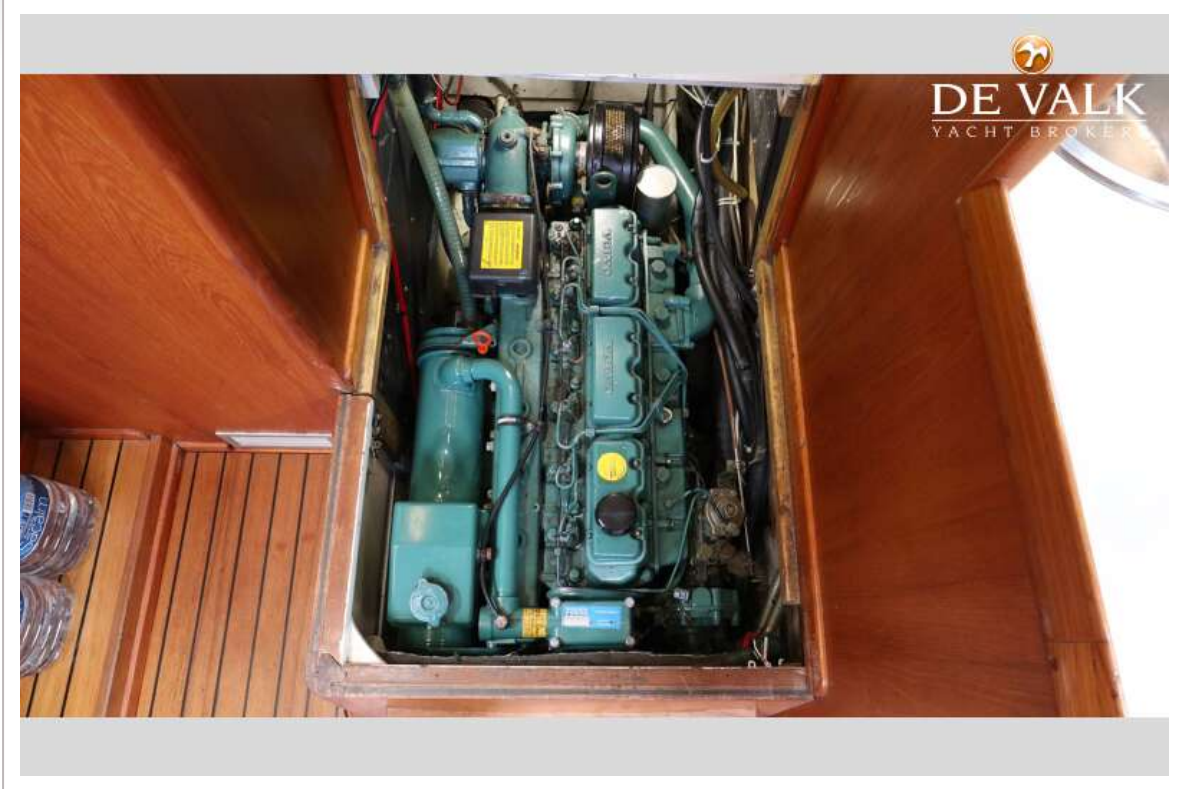


# STANDFAST 56





# STANDFAST 56



# STANDFAST 56

