



DE VALK
YACHT BROKERS



WELLCRAFT 3400 GRAN SPORT



DE VALK
YACHT BROKERS

WELLCRAFT 3400 GRAN SPORT

BROKER'S COMMENTS

World renowned sport boat yard Wellcraft have been building motor yachts for many years and are still going strong. This Wellcraft 3400 has more space and accommodations than many of her contemporary sport boats. Fuel efficient with two smaller diesel engines for economical cruising as well as fast passages. To be sold for her second owner (since 1999). Low priced because of several failures and work must be done. To be sold in "as is" condition

Marc Weijenberg

SPECIFICATIONS

Dimensions	10.24 x 3.81 x 1.10 (m)	Builder	Wellcraft Boats USA
Built	1990	Cabins	2
Material	GRP	Berths	5
Engine(s)	2 x Volvo Penta TAMD41 diesel	Hp/Kw	2 x 200.00 (hp), 147.00 (kw)
Asking price	sold (VAT)	Lying	at sales office

CONTACT

Sales office	De Valk Sint Annaland	Telephone	+31 166 601 000
Address	Koelhuisweg 4 4697 RM Sint Annaland The Netherlands	E-mail	sintannaland@devalk.nl

DISCLAIMER

These particulars are given in good faith as supplied but cannot be guaranteed.



WELLCRAFT 3400 GRAN SPORT

GENERAL

Model	WELLCRAFT 3400 GRAN SPORT
Type	motor yacht Motor Yacht
LOA (m)	10,24
Beam (m)	3,81
Draft (m)	1,10
Headroom (m)	1,88
Year built	1990
Builder	Wellcraft Boats USA
Country	U.S.A.
Displacement (t)	6,1
Hull material	GRP
Hull colour	White
Hull shape	Deep-V
Superstructure material	GRP
Rubbing strake	Stainless steel
Deck material	GRP
Deck finish	Moulded in
Portholes	yes
Radar arch	Non collapsible
Fuel tank (litre)	Stainless Steel 2 x 450
Freshwater tank (litre)	Polyethylene 1 x 250
Wheel steering	Hydraulic Need service

ACCOMMODATION

Cabins	2
Berths	5
Interior	Ash
Floor	Carpet
Open cockpit	yes
Saloon	yes



WELLCRAFT 3400 GRAN SPORT

Headroom saloon (m)	1,88
Air-conditioning	Reverse cycle airco Marine Air (operation not tested)
Aft Cabin	yes
Dinette	yes
Galley	yes
Sink	Stainless steel
Cooker	Origo 2 burner
Microwave	Samsung
Fridge	Norcold
Hot water system	220v + engine
Water pressure system	Electrical
Owners cabin	Double bed
Bathroom	yes
Toilet	yes
Toilet system	Manual
Wash basin	in the bathroom
Shower	yes
Guest cabin 1	Double bed
Guest cabin 2	double bed Under cockpit/onder kuip/unter Pflicht

MACHINERY

No of engines	2
Make	Volvo Penta
Type	TAMD41
HP	200,00
kW	147,00
Fuel	diesel
Year installed	1990
Maximum speed (kn)	20
Cruising speed (kn)	13.00
Engine hours	1650



WELLCRAFT 3400 GRAN SPORT

Engine cooling system	Freshwater heat exchanger
Drive	Z-drive
Engine controls	Bowden cable
Gearbox	Volvo Penta Duoprops
Bowthruster	Electric Vetus (defect)
Exhaust	Watercooled
Electric bilge pump	yes
Electrical installation	12/220v
Generator	wet exhaust Zeise 3,5 kW (operation not tested, niet getest, nicht geprüft)
Start battery	1 x 80amps
Service battery	2 x 240amps
Battery charger	yes
Shorepower	yes
Extra info	yes

NAVIGATION

Compass	does not function Plastimo
Depth sounder	yes
VHF	Icom M-59
Autopilot	Robertson AP500
Radar	Raytheon R10
Extra info	equipment is outdated and not tested

EQUIPMENT

Fixed windscreen	yes
Sprayhood	In moderate condition
Cockpit cover	In moderate condition
Cockpit cushions	yes
Cockpit table	yes
Bathing platform	yes

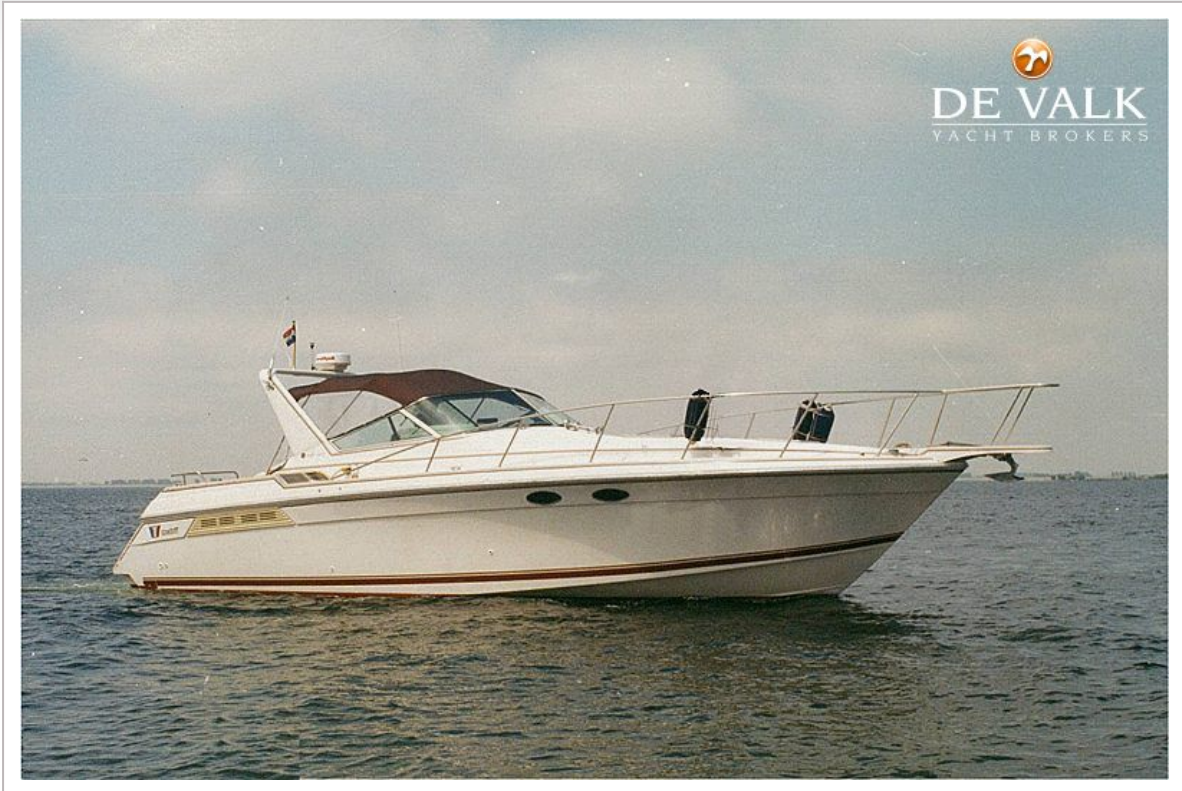


WELLCRAFT 3400 GRAN SPORT

Deck shower	yes
Anchor	yes
Anchor chain	75 mtr
Windlass	Electrical
Pulpit	yes
Wiper	defect
Horn	yes
Fenders	yes
Mooring lines	yes
Extra info	To be sold "as is project", work to be done on in- and exterior and equipment.



WELLCRAFT 3400 GRAN SPORT



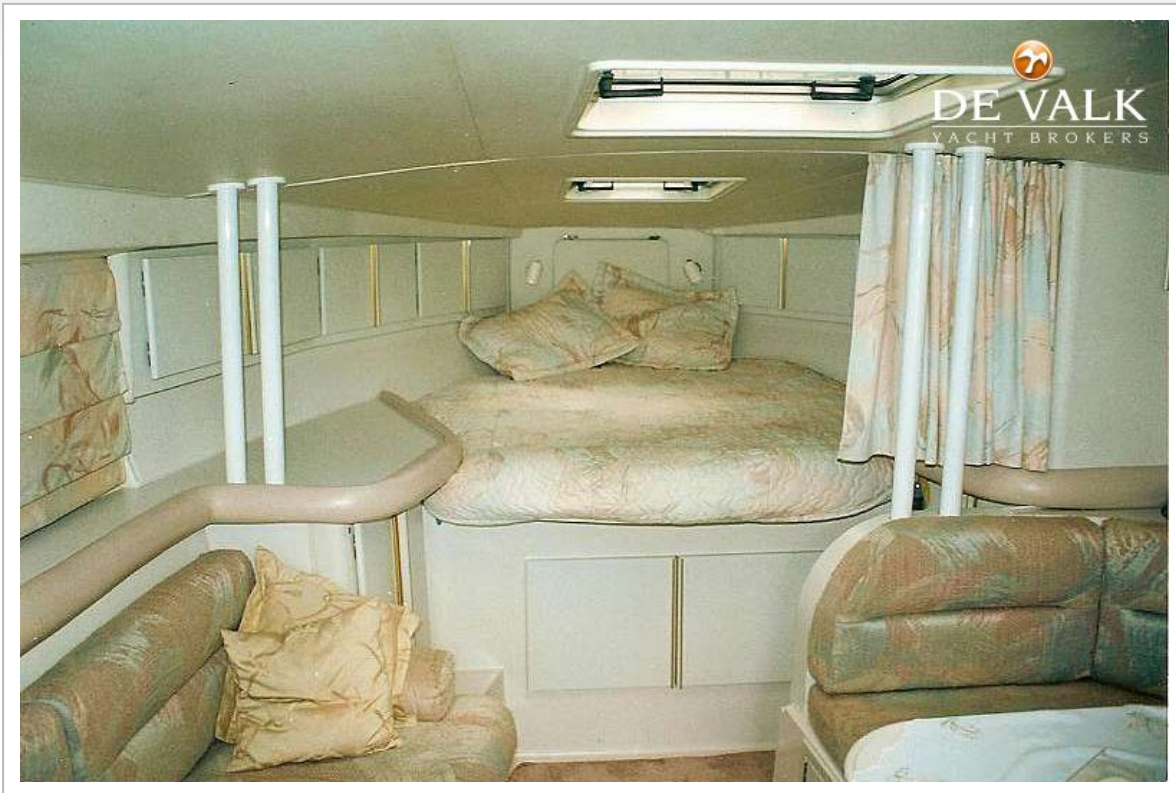
WELLCRAFT 3400 GRAN SPORT



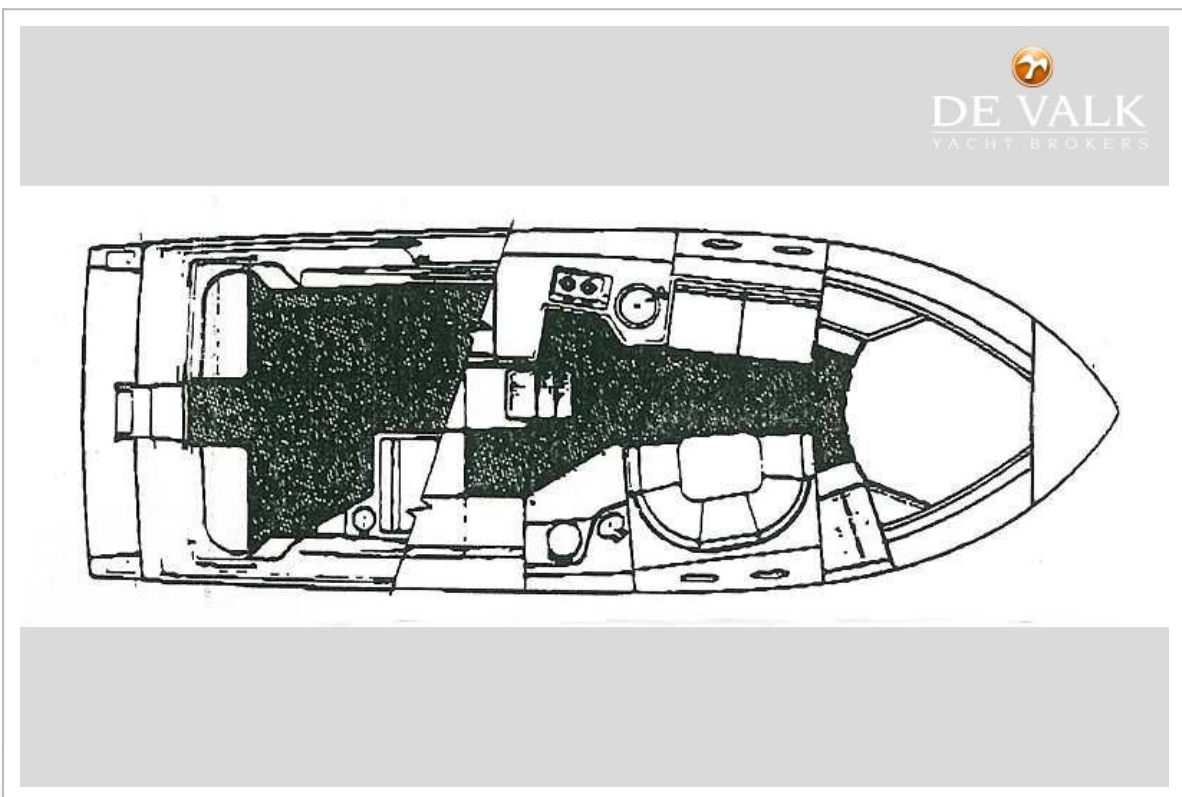
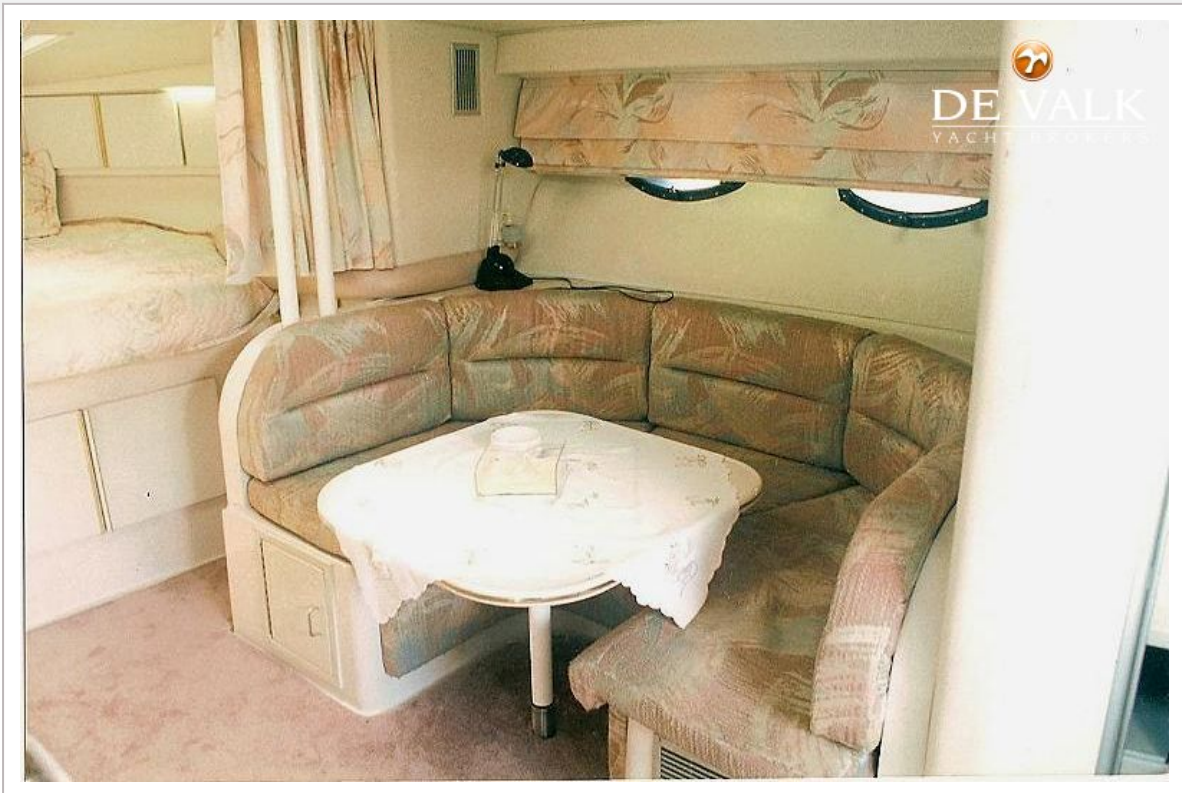
WELLCRAFT 3400 GRAN SPORT



WELLCRAFT 3400 GRAN SPORT



WELLCRAFT 3400 GRAN SPORT



WELLCRAFT 3400 GRAN SPORT

