



GRAND BANKS 36 SEDAN RIVIERA



GRAND BANKS 36 SEDAN RIVIERA

BROKER'S COMMENTS

Based upon the well tested and appreciated GB36 hull, the Sedan model with the lower fly bridge is best suitable for offshore and inland waterways. With twin upgraded Volvo diesels safety at sea is secured as well as cruising canals with traffic. The salon is more spacious than the standard EU model. She has been well kept and offers very good accommodations and storage space in- and outside. Large open cockpit and fly bridge for optimum cruising comfort.

Marc Weijenberg

SPECIFICATIONS

Dimensions	11.32 x 3.71 x 1.19 (m)	Builder	American Marine Ltd
Built	1987	Cabins	2
Material	GRP	Berths	5
Engine(s)	2 x Volvo Penta TMD41L diesel	Hp/Kw	2 x 150.00 (hp), 110.25 (kw)
Asking price	sold (VAT)	Lying	at sales office

CONTACT

Sales office	De Valk Sint Annaland B.V.	Telephone	+31 (0)166 601 000
Address	Koelhuisweg 4 4697 RM Sint Annaland NL	E-mail	sintannaland@devalk.nl

DISCLAIMER

These particulars are given in good faith as supplied but cannot be guaranteed.



GRAND BANKS 36 SEDAN RIVIERA

GENERAL

Model	GRAND BANKS 36 SEDAN RIVIERA
Type	motor yacht
LOA (m)	11,32
Beam (m)	3,71
Draft (m)	1,19
Air draft (m)	3,45
Headroom (m)	1,90
Year built	1987
Builder	American Marine Ltd
Country	Singapore
Designer	Kenneth L. Smith
Displacement (t)	11
Hull material	GRP
Hull colour	white
Hull shape	hard chine
Keel type	long keel
Superstructure material	GRP
Rubbing strake	wood
Deck material	GRP
Deck finish	teak
Superstructure deck finish	non-skid moulded in
Cockpit deck finish	teak
Window frame	aluminium
Window material	tempered glass
Deckhatch	yes
Portholes	yes
Flybridge	yes
Flybridge cover	yes
Mast can be lowered	manual
Steadying sail with mast	yes



GRAND BANKS 36 SEDAN RIVIERA

Fuel tank (litre)	steel 2 x 750
Freshwater tank (litre)	stainless steel 2 x 393
Blackwater tank (litre)	polyethylene
Blackwater tank extraction	deck extraction + pump
Wheel steering	cable steering
Flybridge helm position	cable steering

ACCOMMODATION

Cabins	2
Berths	5
Interior	teak
Floor	parquet
Open cockpit	yes
Pilot house/deck saloon	yes
Headroom saloon (m)	1,90
Heating	diesel ducted hot air Webasto Airtop Evo3900
Dinette	L-shape with two seats
Sliding door to cockpit	yes
Galley	yes
Countertop	plastic
Sink	stainless steel
Cooker	calor gas Princess
Oven	Princess
Extractor	yes
Gas alarm	yes
Fridge	+ freezer compartment Waeco 12v
Hot water system	220V + engine Isotherm
Water pressure system	electrical
Owners cabin	v-bed
Bed length (m)	2,00 x 0,80
Wardrobe	hanging/drawers/shelves



GRAND BANKS 36 SEDAN RIVIERA

Bathroom	yes
Toilet	shared 1
Toilet system	vacuum
Wash basin	in the bathroom
Shower	shared
Guest cabin 1	double bed
Bed length (m)	2,00 x 0,90
Wardrobe	hanging/drawers/shelves
Extra info	Interior done in handcrafted Teak
Extra info	Well ventilated with sliding windows and hatches

MACHINERY

No of engines	2
Make	Volvo Penta
Type	TMD41L
HP	150,00
kW	110,25
Fuel	diesel
Year installed	1999
Maximum speed (kn)	12
Cruising speed (kn)	7
Consumption (l/hr)	12
Engine hours	486
Engine cooling system	freshwater heat exchanger
Drive	shaft
Engine controls	electrical Micro Commander
Bowthruster	electric Vetus
Sternthruster	electric Vetus
Exhaust	watercooled
Propeller type	fixed
Propeller blades	3



GRAND BANKS 36 SEDAN RIVIERA

Propeller shaft material	stainless steel
Shaft lubrication	water
Manual bilge pump	yes
Electric bilge pump	yes
Electrical installation	12v/220v
Start battery	2 x
Service battery	3 x (2015)
Battery monitor	yes
Battery charger	Mastervolt
Inverter	yes
Shorepower	with cable
Extra info	rev counters indication is off

NAVIGATION

Compass	Ritchie
Compass on flybridge	Ritchie
Electric compass	via autopilot
Depth sounder	VDO
Log	VDO
Repeater	on flybridge
VHF	Simrad RS82
VHF handheld	Raymarine Ray101
Autopilot	+ remote control Raymarine
Rudder angle indicator	via autopilot
Plotter/GPS	Raymarine Hybride
Electronic chart(s)	1 x
AIS receiver	yes
Extra info	remote control for thruster

EQUIPMENT

Window cover	yes
--------------	-----



GRAND BANKS 36 SEDAN RIVIERA

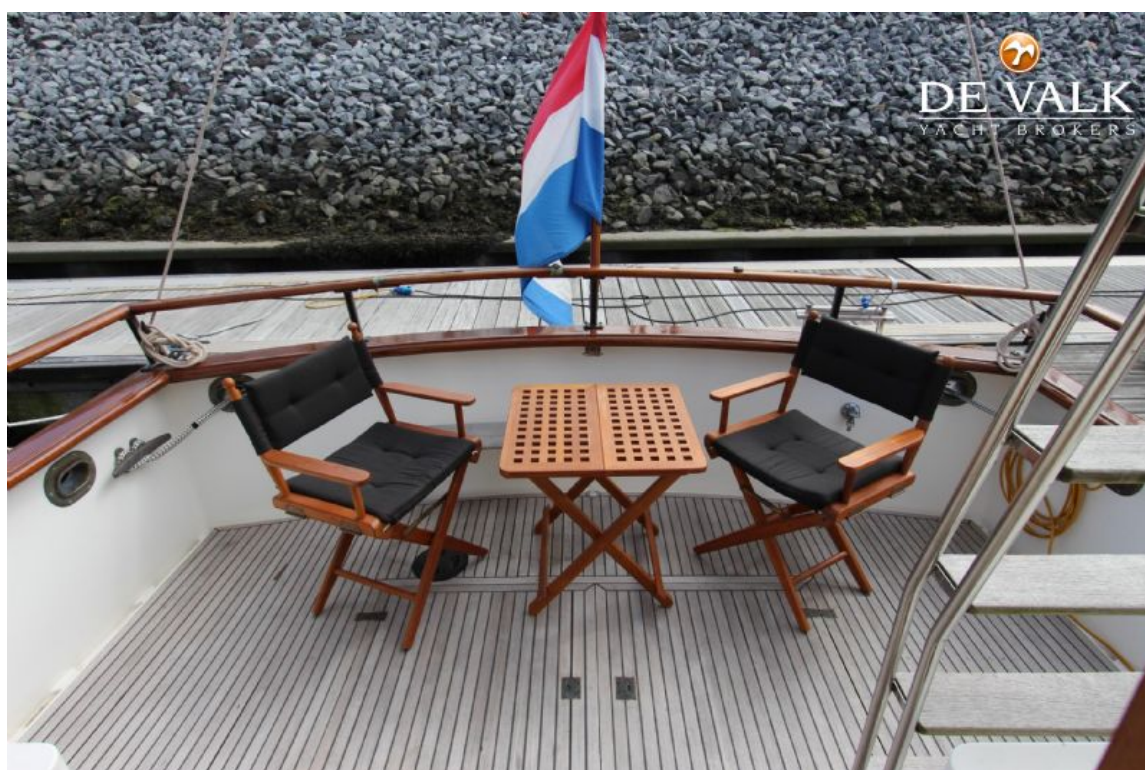
Cockpit table	yes
Cockpit chairs	2 x
Bathing platform	yes
Boarding ladder	stainless steel
Anchor	CQR Plough
Anchor chain	yes
Windlass	electrical Lofrans
Capstan	yes
Deck wash	yes
Sea railing	teak
Grab rail (superstructure)	stainless steel
Railing side opening gates	yes
Pushpit	yes
Pulpit	yes
Lifebuoy	yes
Horn	electric
Radar reflector	yes
Fenders	yes
Mooring lines	yes
Radio-cd player	yes
Fire extinguisher	yes
Latest extinguisher survey	yes



GRAND BANKS 36 SEDAN RIVIERA



GRAND BANKS 36 SEDAN RIVIERA



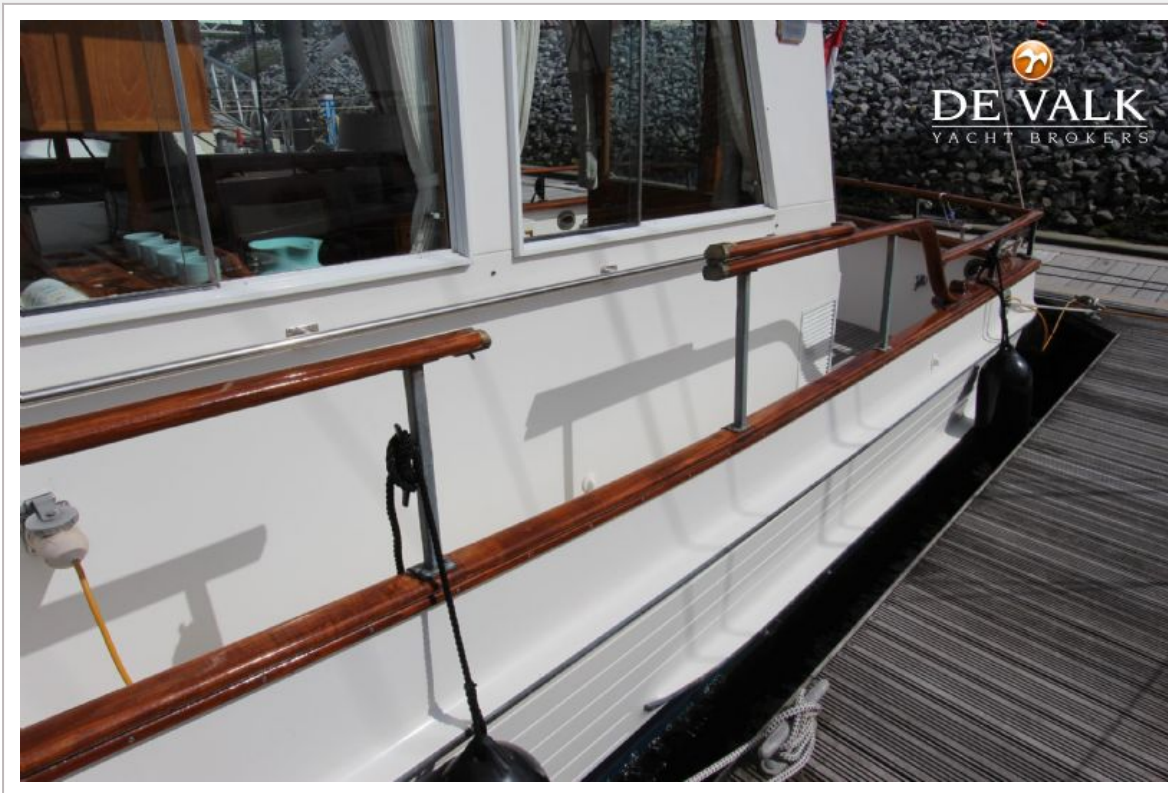
GRAND BANKS 36 SEDAN RIVIERA



GRAND BANKS 36 SEDAN RIVIERA



GRAND BANKS 36 SEDAN RIVIERA



GRAND BANKS 36 SEDAN RIVIERA



GRAND BANKS 36 SEDAN RIVIERA



GRAND BANKS 36 SEDAN RIVIERA



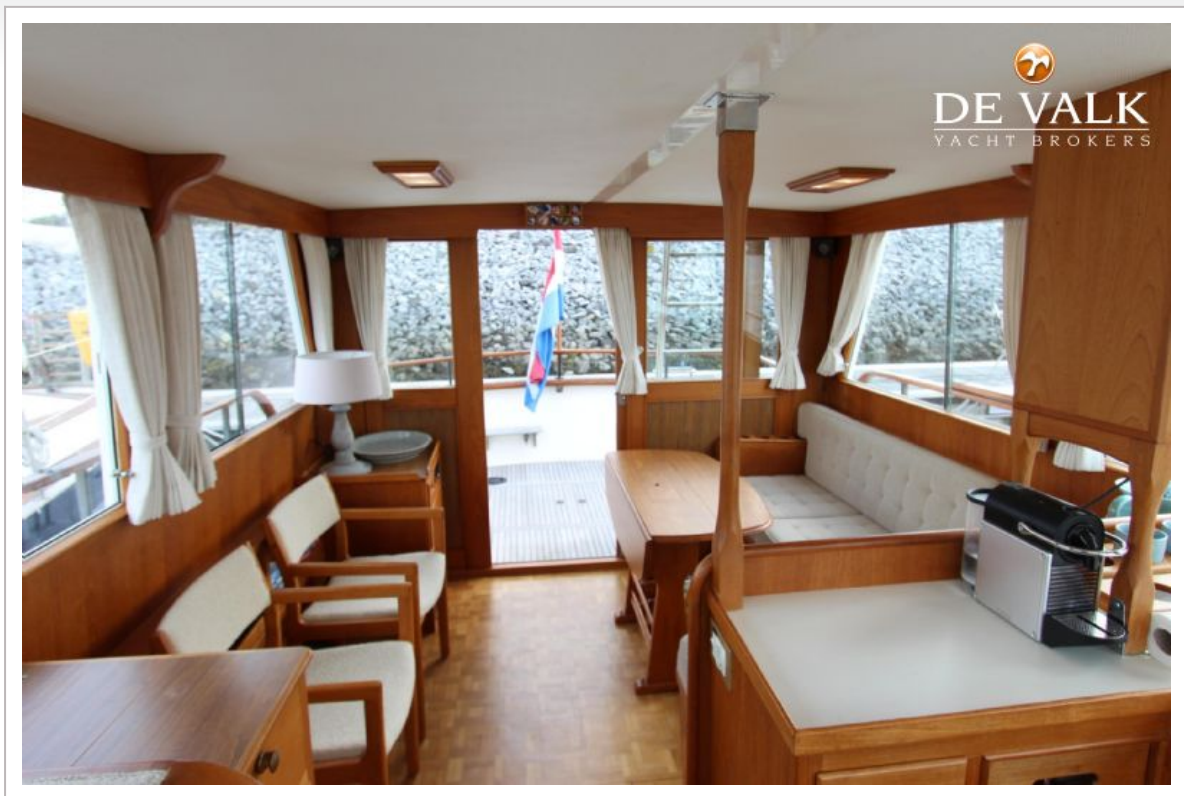
GRAND BANKS 36 SEDAN RIVIERA



GRAND BANKS 36 SEDAN RIVIERA



GRAND BANKS 36 SEDAN RIVIERA



GRAND BANKS 36 SEDAN RIVIERA



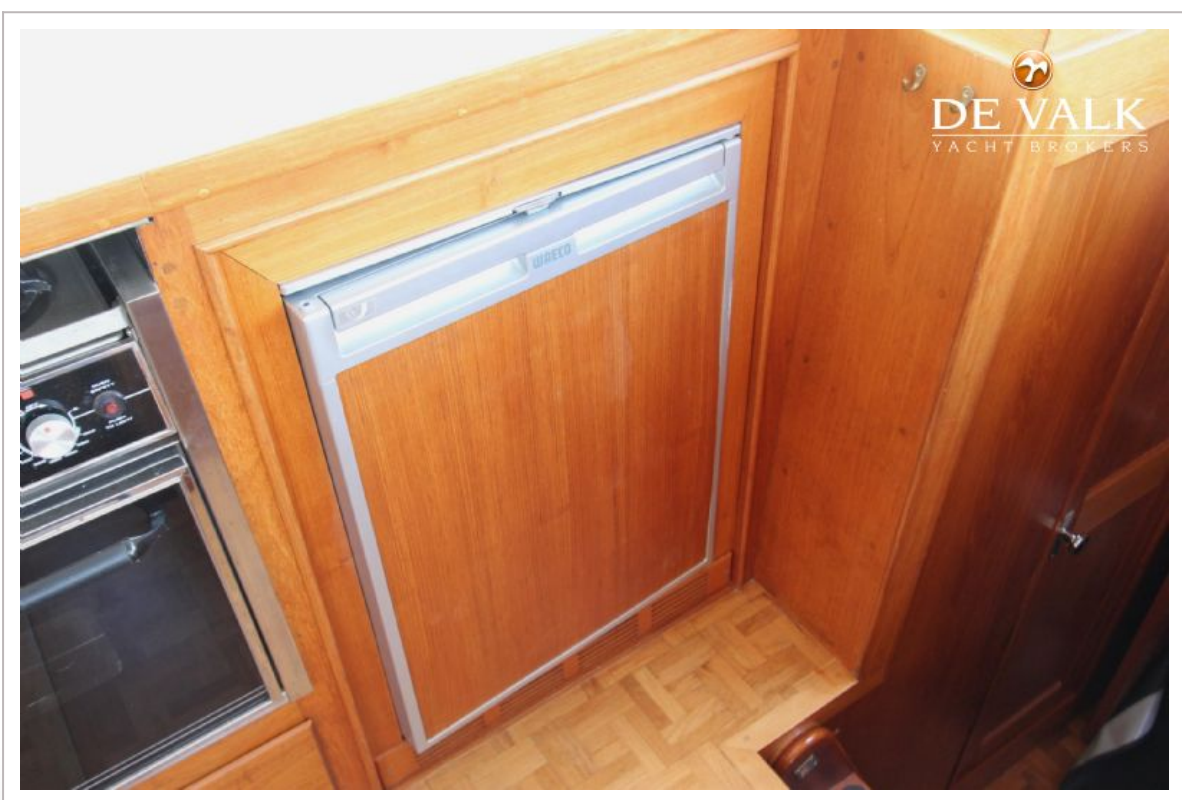
GRAND BANKS 36 SEDAN RIVIERA



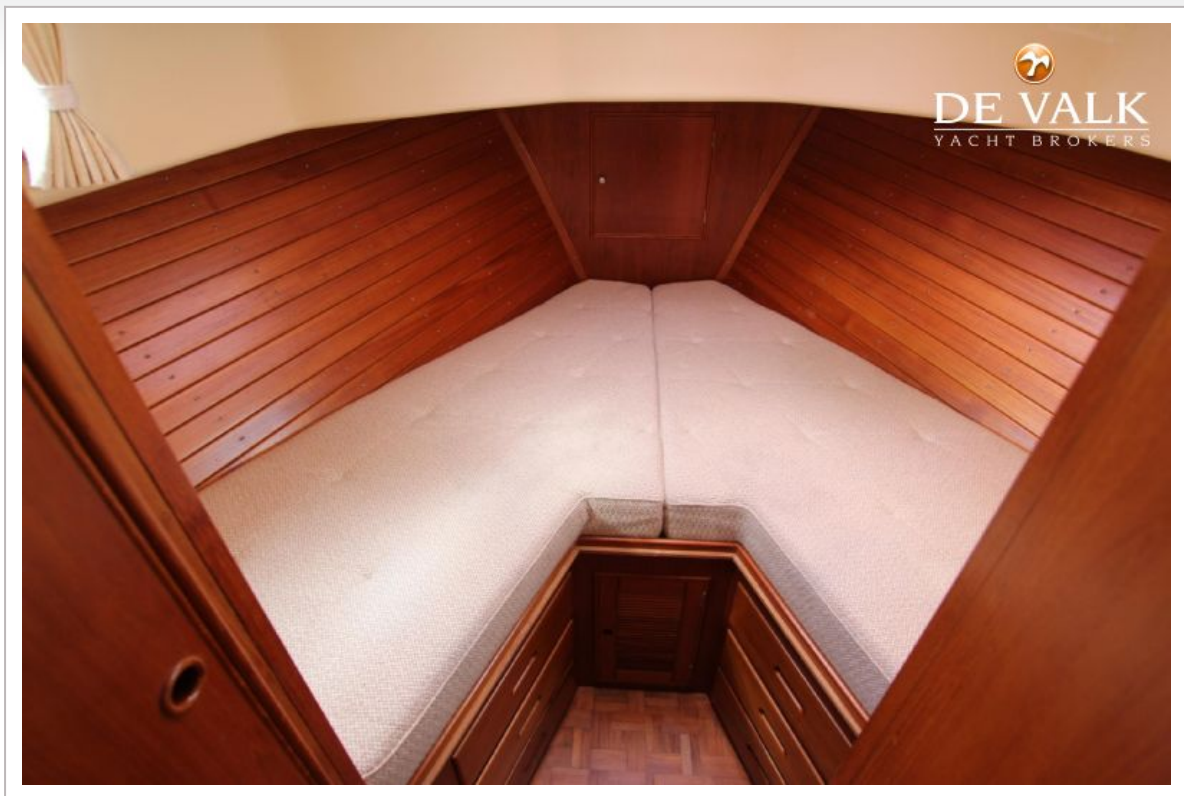
GRAND BANKS 36 SEDAN RIVIERA



GRAND BANKS 36 SEDAN RIVIERA



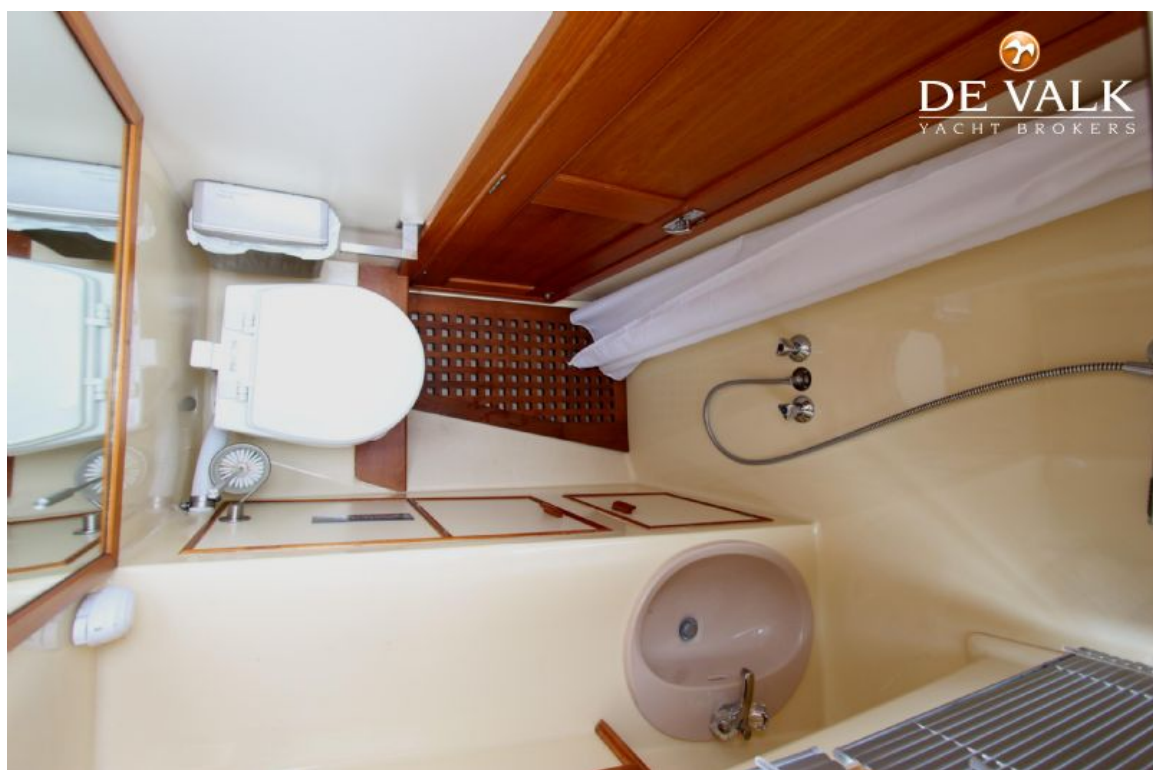
GRAND BANKS 36 SEDAN RIVIERA



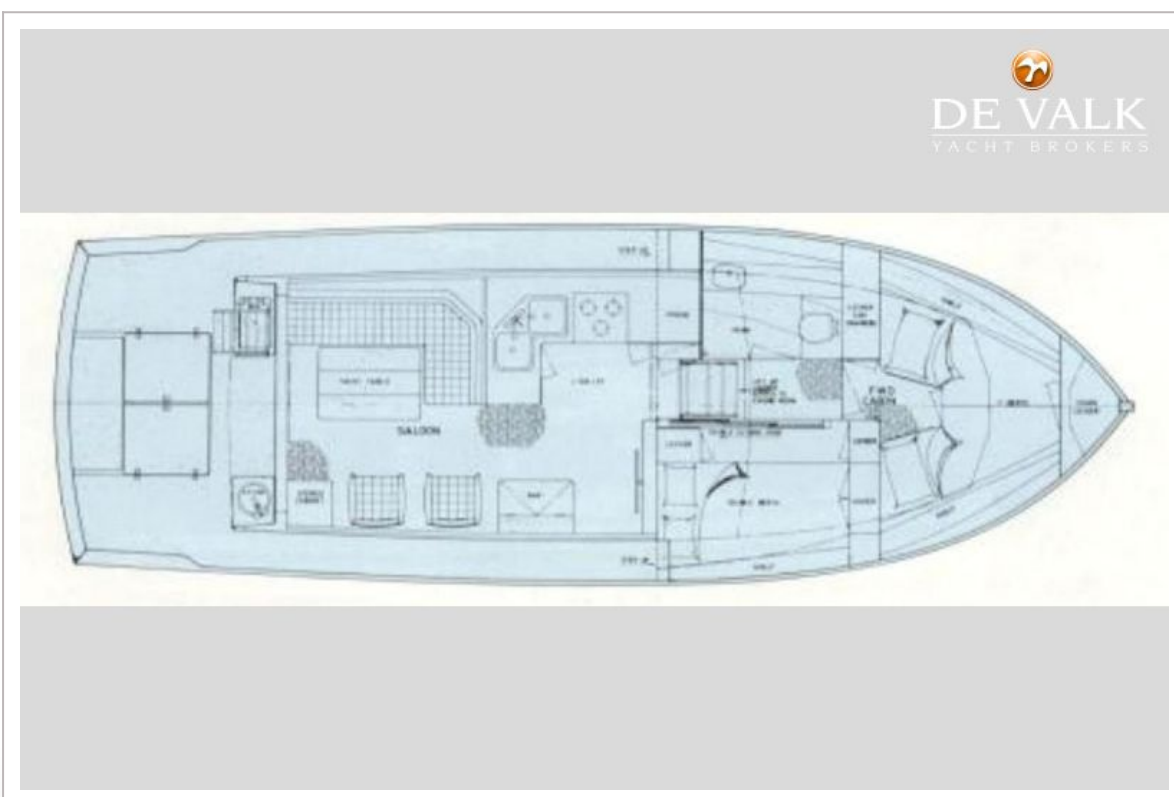
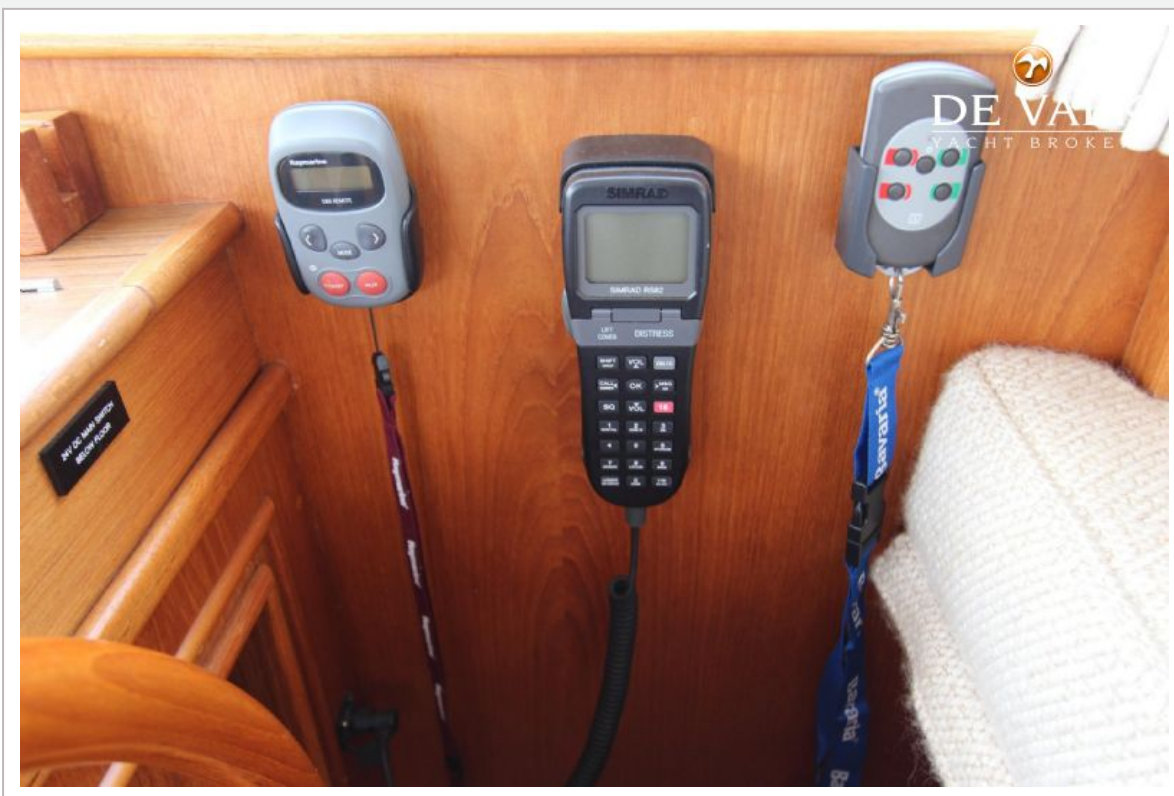
GRAND BANKS 36 SEDAN RIVIERA



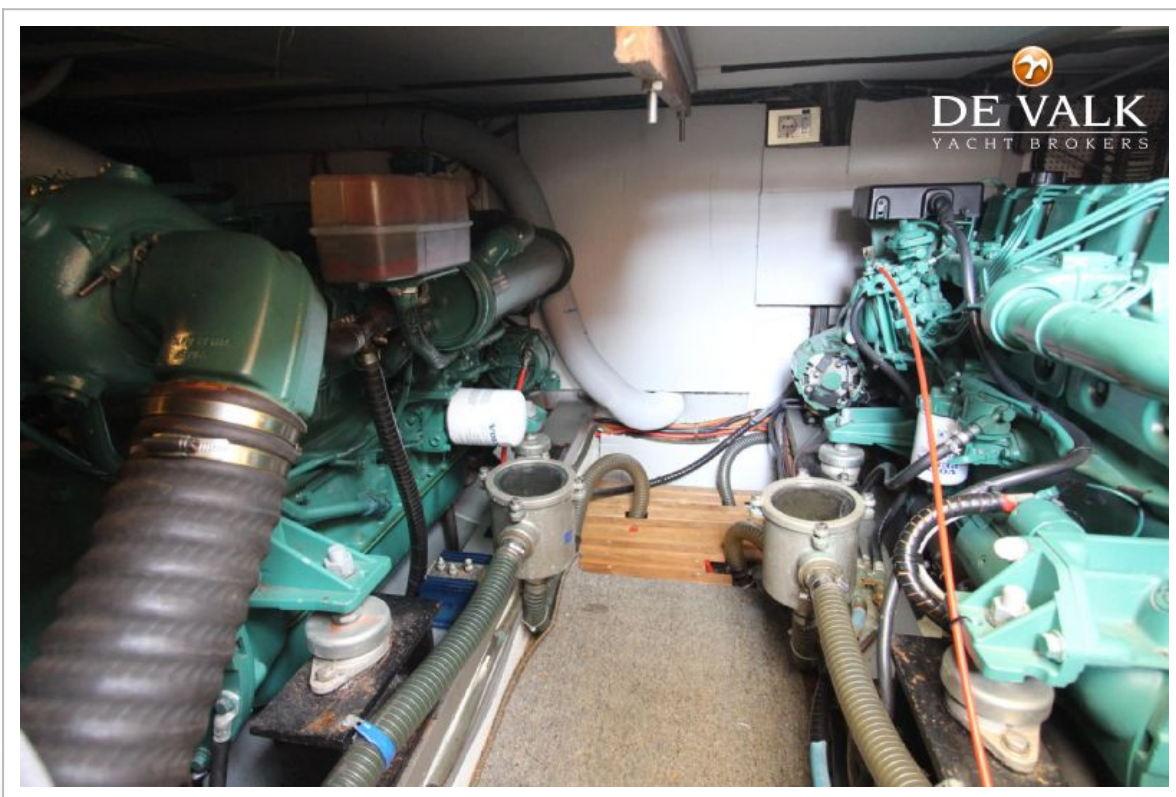
GRAND BANKS 36 SEDAN RIVIERA



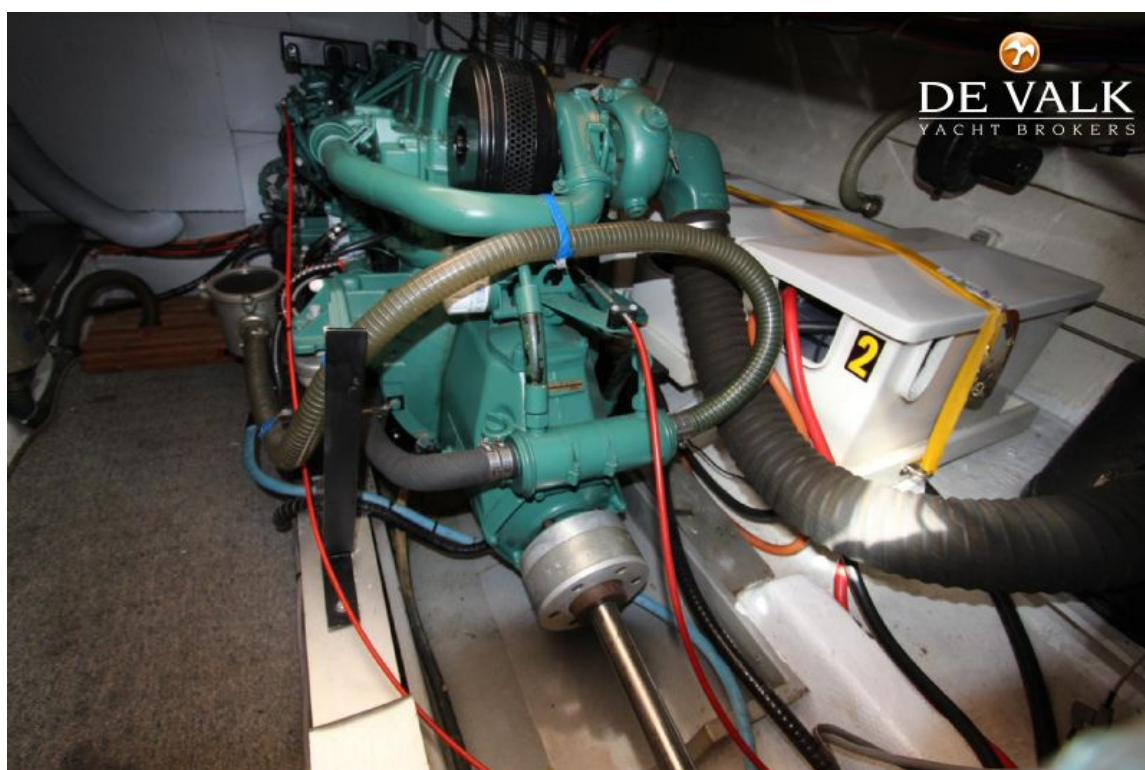
GRAND BANKS 36 SEDAN RIVIERA



GRAND BANKS 36 SEDAN RIVIERA



GRAND BANKS 36 SEDAN RIVIERA



GRAND BANKS 36 SEDAN RIVIERA

