



DE VALK  
YACHT BROKERS



## LINSSEN GRAND STURDY 380 SEDAN



DE VALK  
YACHT BROKERS

# LINSSEN GRAND STURDY 380 SEDAN

## BROKER'S COMMENTS

Neat, solid, and seaworthy Linssen Grand Sturdy 380 Sedan. Very easy to handle thanks to the bow and stern thrusters. Extremely comfortable with a spacious single-level living area (helm – galley – saloon – patio doors – open cockpit), central heating, double glazing, generator, air conditioning and an open roof. This motor yacht is moored on the Grevelingenmeer in Zeeland. If you would like to view this beautiful motorboat, please contact De Valk Sint Annaland to schedule an appointment.

*Jan-Ward van Dantzig*

## SPECIFICATIONS

<b>Dimensions</b>	11.60 x 3.85 x 1.15 (m)	<b>Builder</b>	Linssen Yachts B.V. - Maasbracht
<b>Built</b>	2006	<b>Cabins</b>	2
<b>Material</b>	Steel	<b>Berths</b>	4
<b>Engine(s)</b>	1 x Vetus DT-44425A diesel	<b>Hp/Kw</b>	114.00 (hp), 83.90 (kw)
<b>Asking price</b>	Under Offer (VAT )	<b>Lying</b>	elsewhere / Not at sales office

## CONTACT

<b>Sales office</b>	De Valk Sint Annaland	<b>Telephone</b>	+31 166 601 000
<b>Address</b>	Koelhuisweg 4 4697 RM Sint Annaland The Netherlands	<b>E-mail</b>	sintannaland@devalk.nl

## DISCLAIMER

These particulars are given in good faith as supplied but cannot be guaranteed.



# LINSSEN GRAND STURDY 380 SEDAN

## GENERAL

<b>Model</b>	LINSSEN GRAND STURDY 380 SEDAN
<b>Type</b>	motor yacht
<b>LOA (m)</b>	11,60
<b>LWL (m)</b>	9,55
<b>Beam (m)</b>	3,85
<b>Draft (m)</b>	1,15
<b>Air draft (m)</b>	4,00
<b>Air draft min (m)</b>	2,85
<b>Headroom (m)</b>	1,95
<b>Year built</b>	2006
<b>Launched</b>	2007
<b>Builder</b>	Linssen Yachts B.V. - Maasbracht
<b>Country</b>	The Netherlands
<b>Designer</b>	Linssen Yachts B.V.
<b>Displacement (t)</b>	16,3
<b>CE norm</b>	B
<b>Hull material</b>	steel
<b>Hull colour</b>	blue Painted dark blue by Linssen Yachts in 2018
<b>Hull thickness (mm)</b>	6/5
<b>Hull shape</b>	hard chine
<b>Superstructure material</b>	steel
<b>Superstructure (mm)</b>	4
<b>Deck plate thickness (mm)</b>	4
<b>Rubbing strake</b>	fender rope & hard rubber around bathing platform
<b>Deck material</b>	steel
<b>Deck finish</b>	teak Refurbished in 2018 (including new caulking)
<b>Superstructure deck finish</b>	non-skid paint
<b>Cockpit deck finish</b>	teak Refurbished in 2018 (including new caulking)
<b>Antifouling (year)</b>	New layer was applied in 2024
<b>Dorades</b>	1 x Stainless steel shell on the deck hatch of the bathroom



# LINSSEN GRAND STURDY 380 SEDAN

<b>Window frame</b>	aluminium
<b>Window material</b>	double glazing With a cover over the 5 front windows (New in 2021)
<b>Deckhatch</b>	Gebo with shades & mosquito screens
<b>Portholes</b>	aluminium With mosquito screens
<b>Insulation</b>	glasswool
<b>Mast can be lowered</b>	manual (with a teak support)
<b>Fuel tank (litre)</b>	steel 2 x 450
<b>Level indicator (fuel tank)</b>	yes
<b>Freshwater tank (litre)</b>	polyethylene 2 x 220
<b>Level indicator (freshwater)</b>	yes
<b>Blackwater tank (litre)</b>	polyethylene 220
<b>Level indicator (blackwater)</b>	Gobius 4
<b>Blackwater tank extraction</b>	deck extraction + pump (electric Exalto vacuum pump)
<b>Wheel steering</b>	hydraulic Teak Stado steering wheel
<b>Inside helm position</b>	Vetus MTC 72 - MT130 hydraulic system
<b>Emergency tiller</b>	yes
<b>More info on hull</b>	Hull above & below waterline was sandblasted by Linssen in 2018
<b>More info on paintwork</b>	New paint systems applied on hull by Linssen in 2018
<b>Extra info</b>	New antifouling system on underwater hull by Linssen in 2018
<b>Extra info</b>	Middle window can be opened and is supported with a gas spring
<b>Extra info</b>	PS Middle steering house window slides up/down & mosquito screen

## ACCOMMODATION

<b>Cabins</b>	2
<b>Berths</b>	4
<b>Interior</b>	cherry Finished with unique wenge frames
<b>Floor</b>	teak and holly (teak with ash)
<b>Open cockpit</b>	yes
<b>Pilot house/deck saloon</b>	Headroom : 1,95 - 2,10 m



# LINSSEN GRAND STURDY 380 SEDAN

<b>Saloon</b>	yes
<b>Headroom saloon (m)</b>	1,95 - 2,10
<b>Sliding roof</b>	manual
<b>Heating</b>	central heating Eberspacher Hydronic M D5W5
<b>Air-conditioning</b>	single cycle airco 1 x Dometic Cruisair 10.000 BTU (in the owners cabin)
<b>Dinette</b>	Half round saloon sofa on starboard side (2 x drawer underneath)
<b>Opening door to cockpit</b>	2 x Opening door to aft deck / cockpit
<b>Galley</b>	On Port Side with a pull-out waste bin - Headroom: 1,95 m
<b>Countertop</b>	corian Grey
<b>Sink</b>	stainless steel 1 x
<b>Cooker</b>	ceramic 2 x Burner - Siemens
<b>Microwave/oven combi</b>	& Grill - ATAG - Electric (220V)
<b>Fridge</b>	Coolmatic front loader with a compressor
<b>Freezer</b>	Small freezing compartment in the Coolmatic fridge
<b>Hot water system</b>	220V + engine 45 Liter AquaH Marine Water Heater (Renewed in 2018)
<b>Water pressure system</b>	electrical With a Jabsco waterpump
<b>Crockery</b>	(for 4 persons) & glasses (glasses with Linssen logo)
<b>Owners cabin</b>	French bed Front cabin - Headroom : 1,94 m
<b>Bed length (m)</b>	2,05 x 1,60
<b>Wardrobe</b>	hanging/drawers/shelves
<b>Bathroom</b>	shared The bathroom features a modern towel radiator. Headroom : 1,88 m
<b>Toilet</b>	shared
<b>Toilet system</b>	electric Jabsco Quiet Flush
<b>Wash basin</b>	in the bathroom
<b>Shower</b>	shared With a sliding door & automatic drain pump - Headroom : 1,98 m
<b>Extra info</b>	Slatted base under mattress in owner's cabin
<b>Guest cabin 1</b>	bunk bed On starboard side - Headroom : 1,95 m
<b>Bed length (m)</b>	2 x 2,05 x 0,70



# LINSSEN GRAND STURDY 380 SEDAN

Wardrobe	shelves
Extra info	Headroom in hallway from steering house to front cabin : 1,96 m
Extra info	White curtains & white Luxaflex for windows in steering house
Extra info	Ceiling finished in Novolux with LED interior lights

## MACHINERY

No of engines	1
Make	Vetus
Type	DT-44425A
HP	114
kW	83.90
Fuel	diesel
Year installed	2006
Maximum speed (kn)	8,5
Cruising speed (kn)	7
Engine hours	955
Engine cooling system	freshwater heat exchanger
Drive	shaft
Engine controls	bowden cable
Gearbox	hydraulic ZF Hurth ZF45 / 25:1
Bowthruster	electric Vetus 95kgf - with remote controle
Sternthruster	electric Vetus 95kgf - with remote controle
Exhaust	watercooled
Thrust bearing	Python P80 S40
Propeller type	fixed
Propeller blades	4
Propeller shaft material	stainless steel
Shaft lubrication	water
Electric bilge pump	Jabsco & a loose Johnson pump with longer hose
Bilge alarm	yes
Electrical installation	12 & 220 Volt



# LINSSEN GRAND STURDY 380 SEDAN

<b>Generator</b>	silent separator Onan MDKAU 4.0 (Halyard HMI water separator)
<b>Running hours generator</b>	140
<b>Start battery</b>	4 x 90 Ah (2018), also connected to the bow- & stern thruster
<b>Service battery</b>	4 x 90 Ah AGM Mastervolt (2018)
<b>Battery charger</b>	Mastervolt Mass 12V/60A
<b>Inverter</b>	Mastervolt Mass Sine 12V/2000W
<b>Solar panel</b>	2 x (New in 2020 - connected to the engine batteries)
<b>Diode battery combiners</b>	yes
<b>Shorepower</b>	with cable
<b>Extra info</b>	Separ Diesel filter with water separator
<b>Extra info</b>	Engine & generator have been maintained annually
<b>Extra info</b>	Several 12 Volt & 220 Volt sockets throughout the interior

## NAVIGATION

<b>Electric compass</b>	Raymarine ST60 Compass
<b>Depth sounder/log</b>	Raymarine ST60+ Tridata
<b>VHF</b>	Raymarine Ray 240
<b>Autopilot</b>	Raymarine ST6002 & Raymarine S100 (wire-less remote) Controller
<b>Rudder angle indicator</b>	In the autopilot display
<b>Plotter/GPS</b>	Raymarine Axiom+ 9' (New in 2022)
<b>Electronis chart(s)</b>	1 x Navionix
<b>Navigation lights</b>	Complete + 2x decklight + dimmable cockpit light
<b>Searchlight</b>	Jabsco Ray-Line 135 SL with remote at the steering wheel
<b>Extra info</b>	Custom made steering seat with extra cupboard space underneath
<b>Extra info</b>	Nice bar with extendable glass racks between galley & helm seat

## EQUIPMENT

<b>Cockpit cover</b>	Beige - New in April 2024 - Headroom : 1,95 m
----------------------	---



# LINSSEN GRAND STURDY 380 SEDAN

<b>Bimini</b>	By rolling up/unzipping all rear & side panels of cockpit cover
<b>Winter cover</b>	Only over the cockpit
<b>Cockpit cushions</b>	Dark Blue (New in 2023)
<b>Cockpit table</b>	Teak - with a (folding) passage in the middle
<b>Bathing platform</b>	With teak
<b>Boarding ladder</b>	stainless steel With teak steps
<b>Deck shower</b>	On the bathing platform (hot & cold pressured water)
<b>Anchor</b>	1 x
<b>Anchor chain</b>	yes
<b>Windlass</b>	electrical Vetus Alexander III, control on bow & remote at steering wheel
<b>Deck wash</b>	yes
<b>Sea railing</b>	stainless steel (double)
<b>Grab rail (superstructure)</b>	stainless steel
<b>Pushpit</b>	Stainless steel
<b>Lifebuoy</b>	Round white/red buoy
<b>Wiper</b>	2 x Exato, with fresh water spray
<b>Horn</b>	electric
<b>Radar reflector</b>	Tri-lens
<b>Fenders</b>	8 x With stainless steel fender storage baskets (2x2 fenders)
<b>Mooring lines</b>	yes
<b>TV</b>	Sharp (on a rails - electric up/down) with Strong Dolby Audio
<b>Radio-cd player</b>	Sony Drive - S radio/cd-player / MP3 / WMA
<b>Cockpit speakers</b>	2 x Sony
<b>Speakers in salon</b>	2 x Sony
<b>Clock - barometer</b>	yes
<b>Fire extinguisher</b>	2 x 4 KG Saval
<b>Latest extinguisher survey</b>	Need to be surveyed / renewed
<b>Auto extinguisher system</b>	In Engine room (need to be surveyed / renewed)
<b>Extra info</b>	The cockpit table is completely removable
<b>Extra info</b>	Plenty of storage space under cockpit floor, across full width
<b>Extra info</b>	3 x Storage under the cockpit sofa







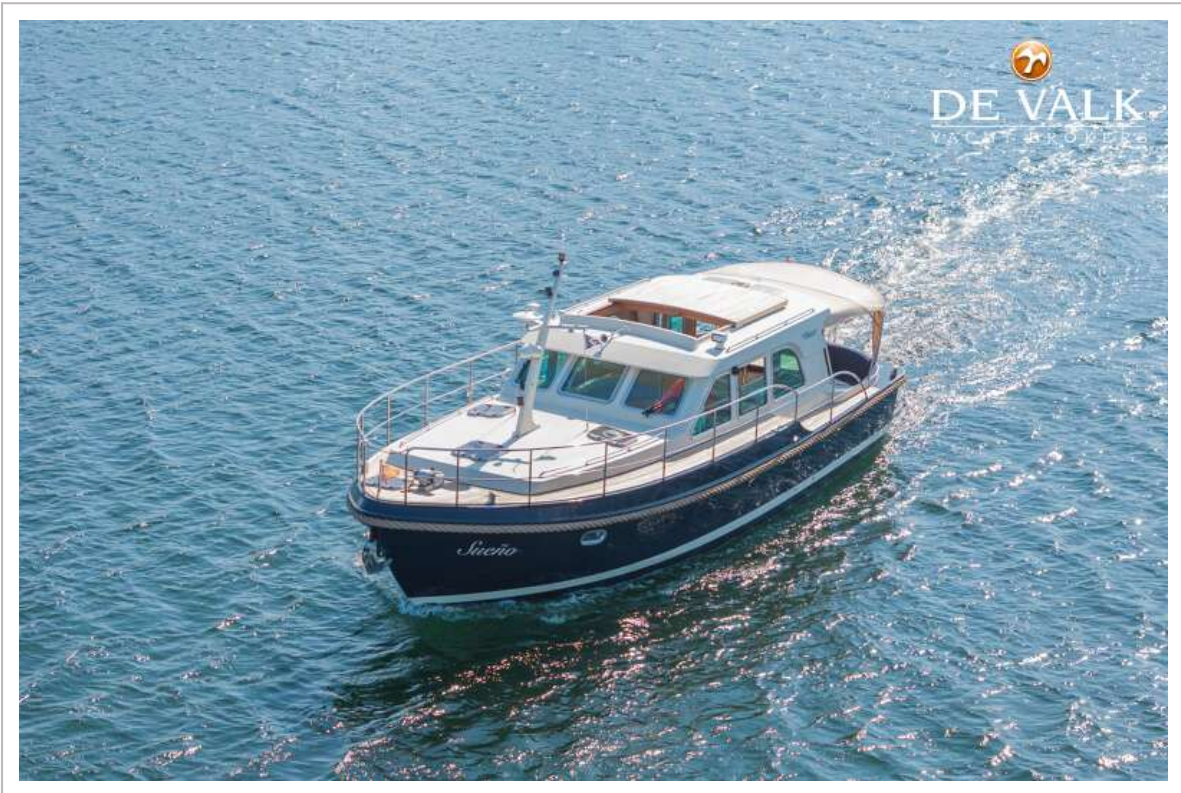
LINSSEN GRAND STURDY 380 SEDAN



LINSSEN GRAND STURDY 380 SEDAN



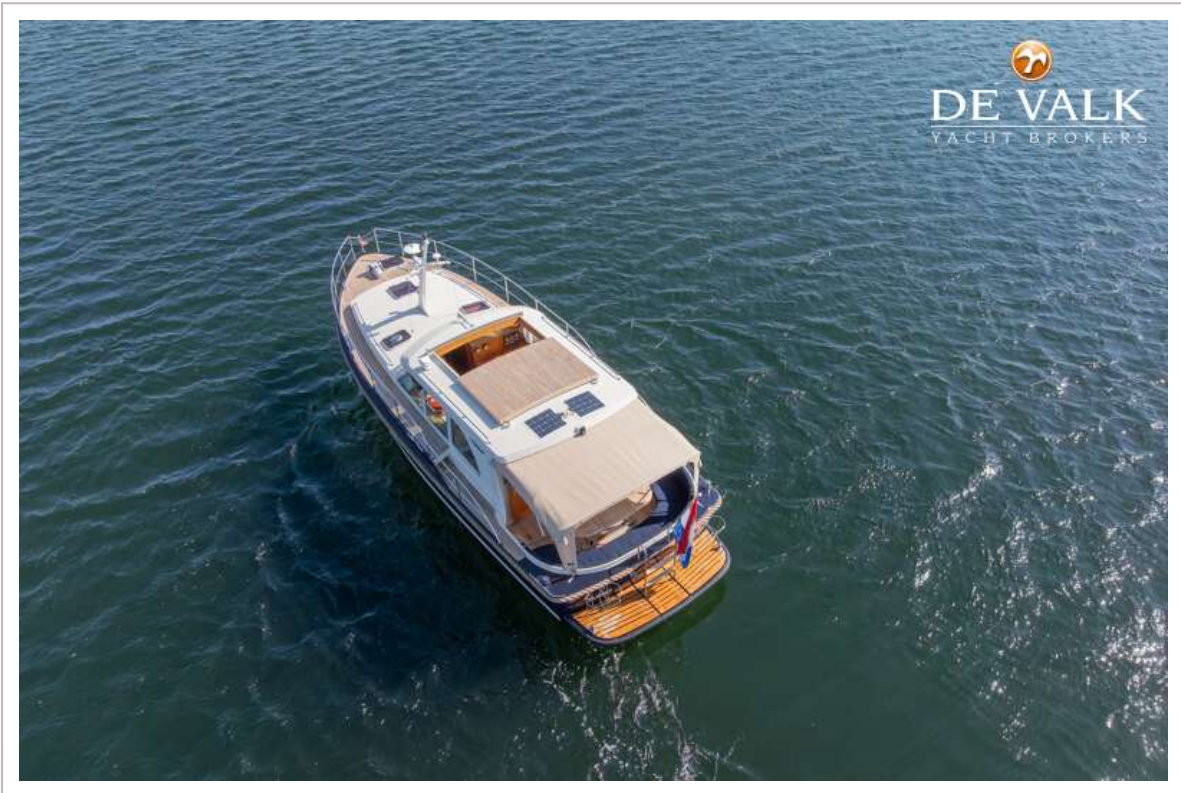
LINSSEN GRAND STURDY 380 SEDAN



# LINSSEN GRAND STURDY 380 SEDAN



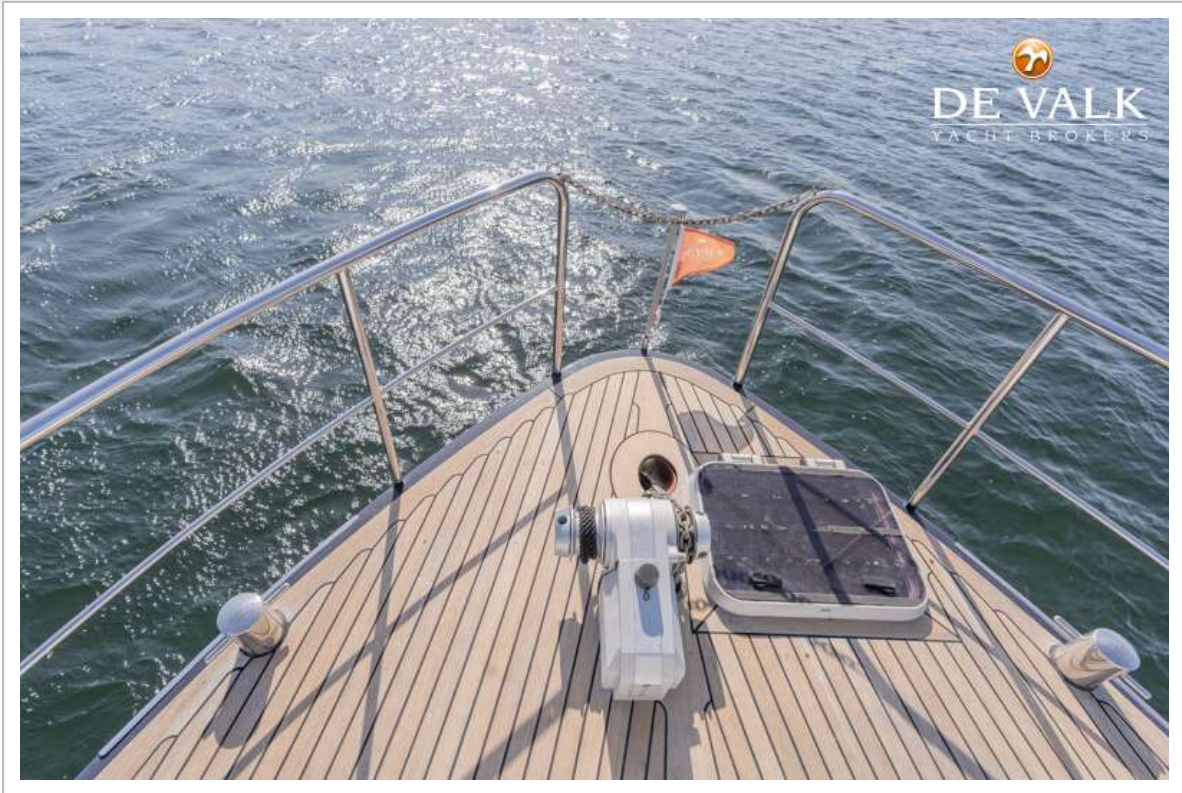
LINSSEN GRAND STURDY 380 SEDAN



LINSSEN GRAND STURDY 380 SEDAN

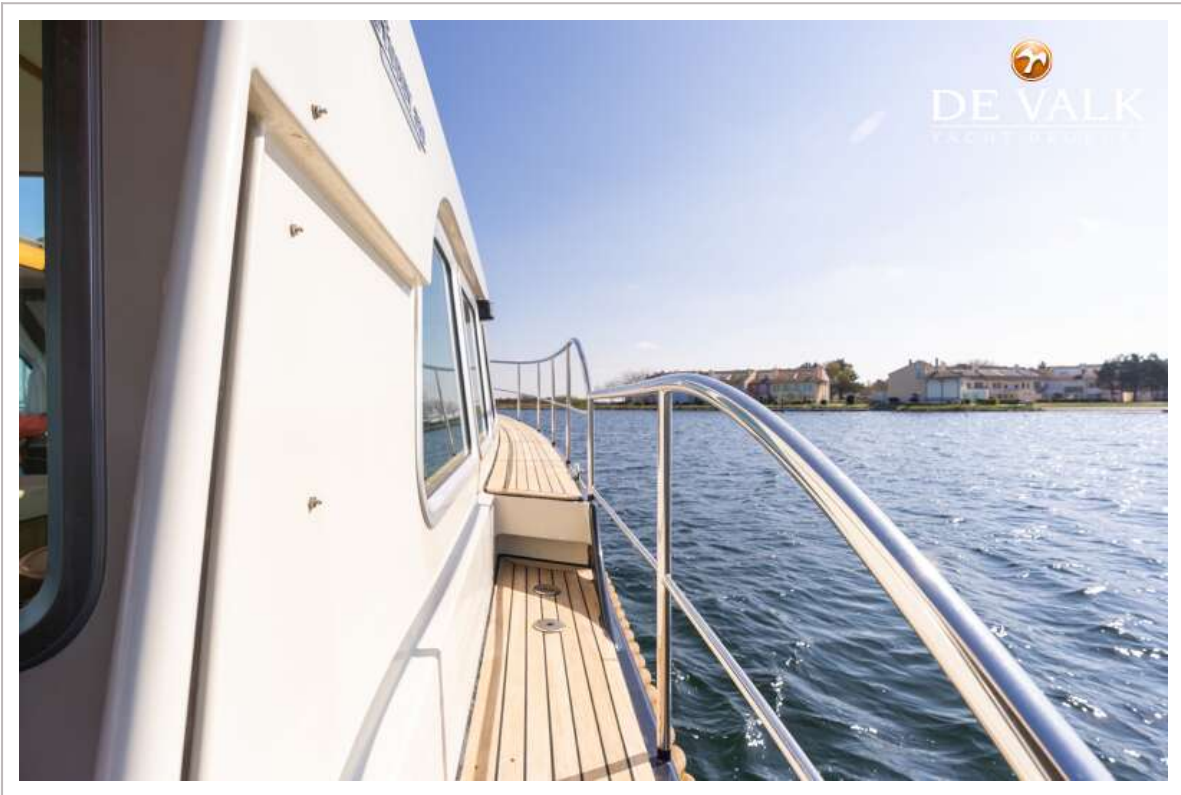


LINSSEN GRAND STURDY 380 SEDAN





LINSSEN GRAND STURDY 380 SEDAN



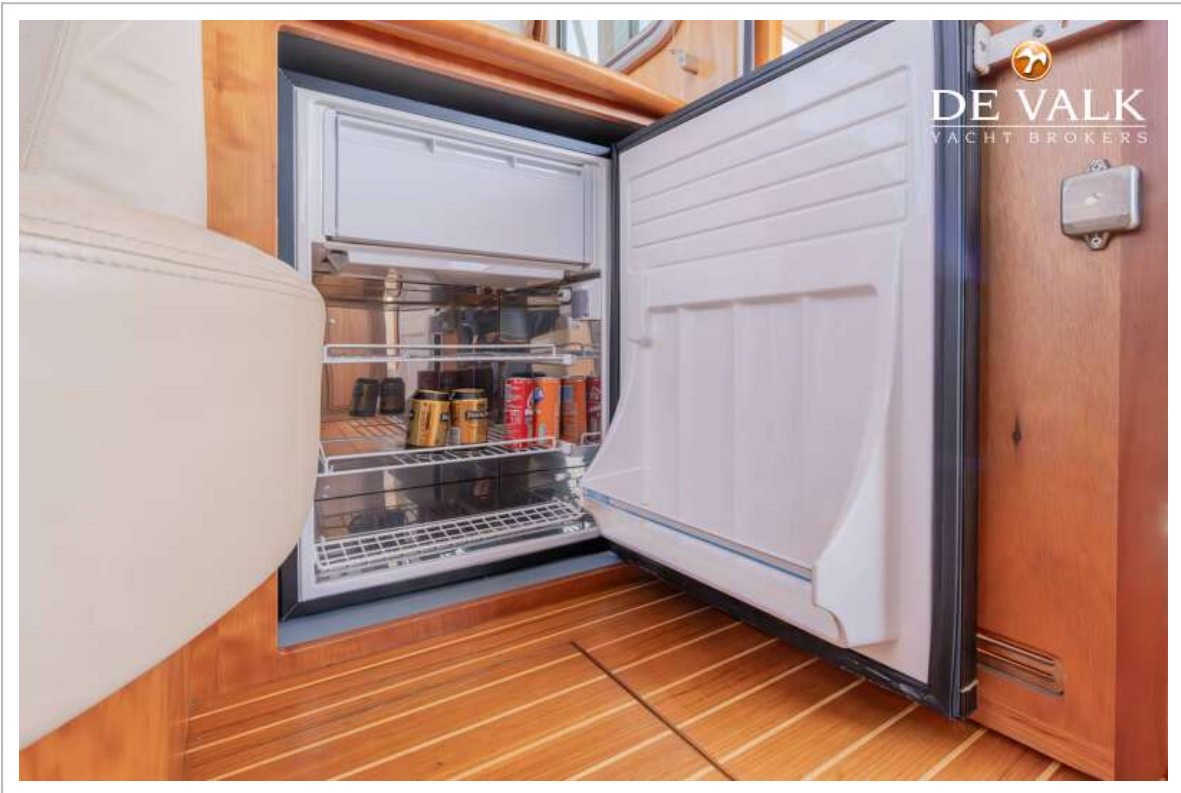
LINSSEN GRAND STURDY 380 SEDAN



LINSSEN GRAND STURDY 380 SEDAN



# LINSSEN GRAND STURDY 380 SEDAN



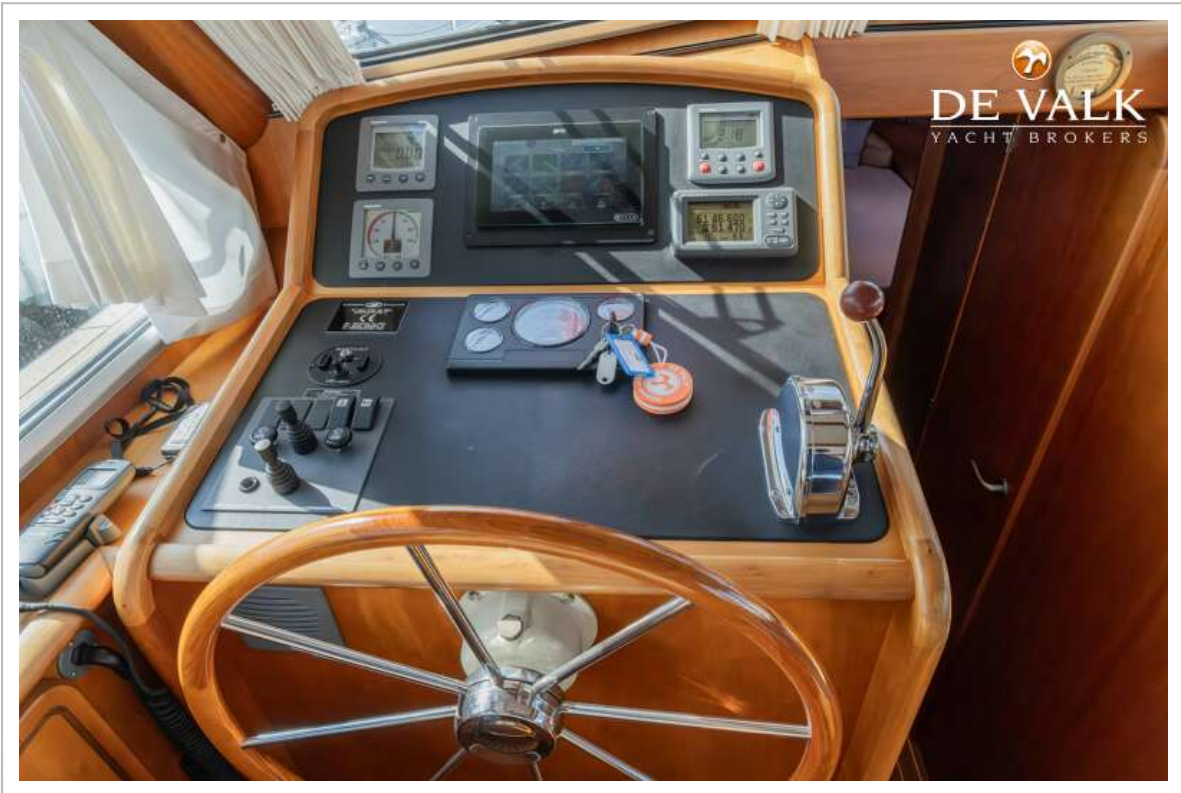
LINSSEN GRAND STURDY 380 SEDAN



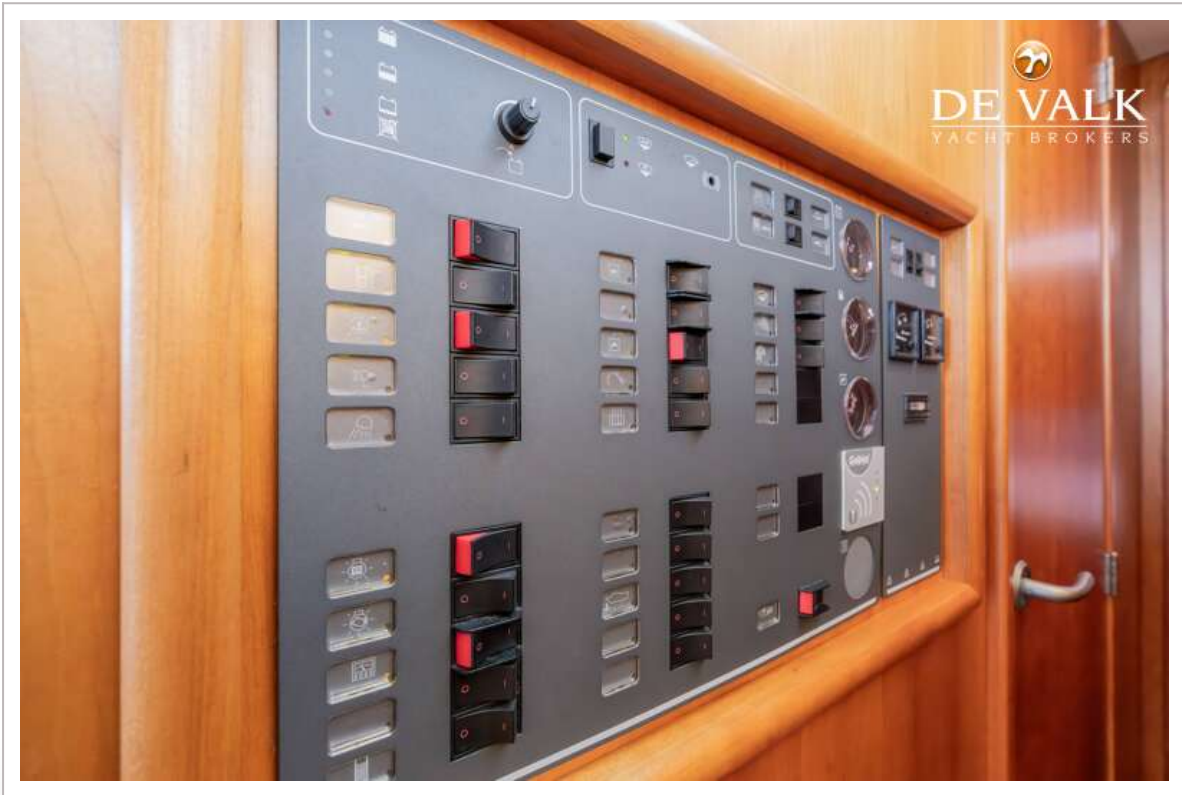
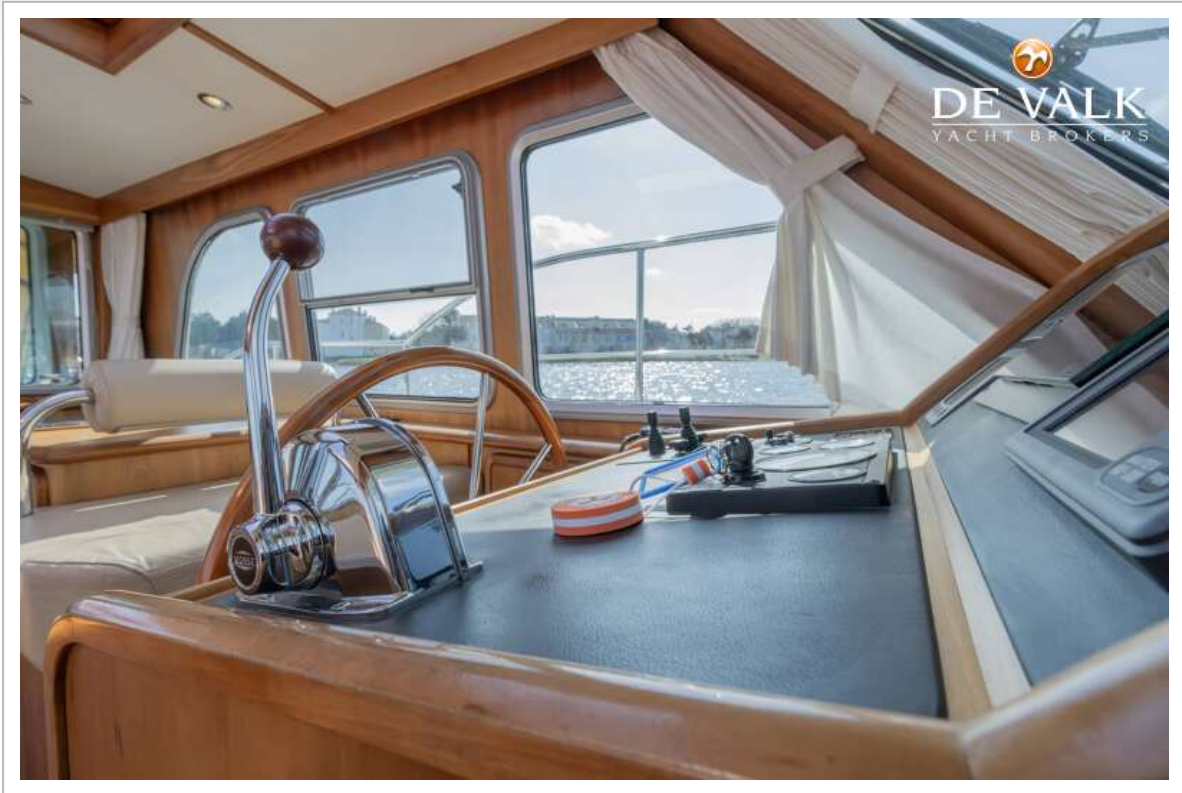
LINSSEN GRAND STURDY 380 SEDAN



LINSSEN GRAND STURDY 380 SEDAN

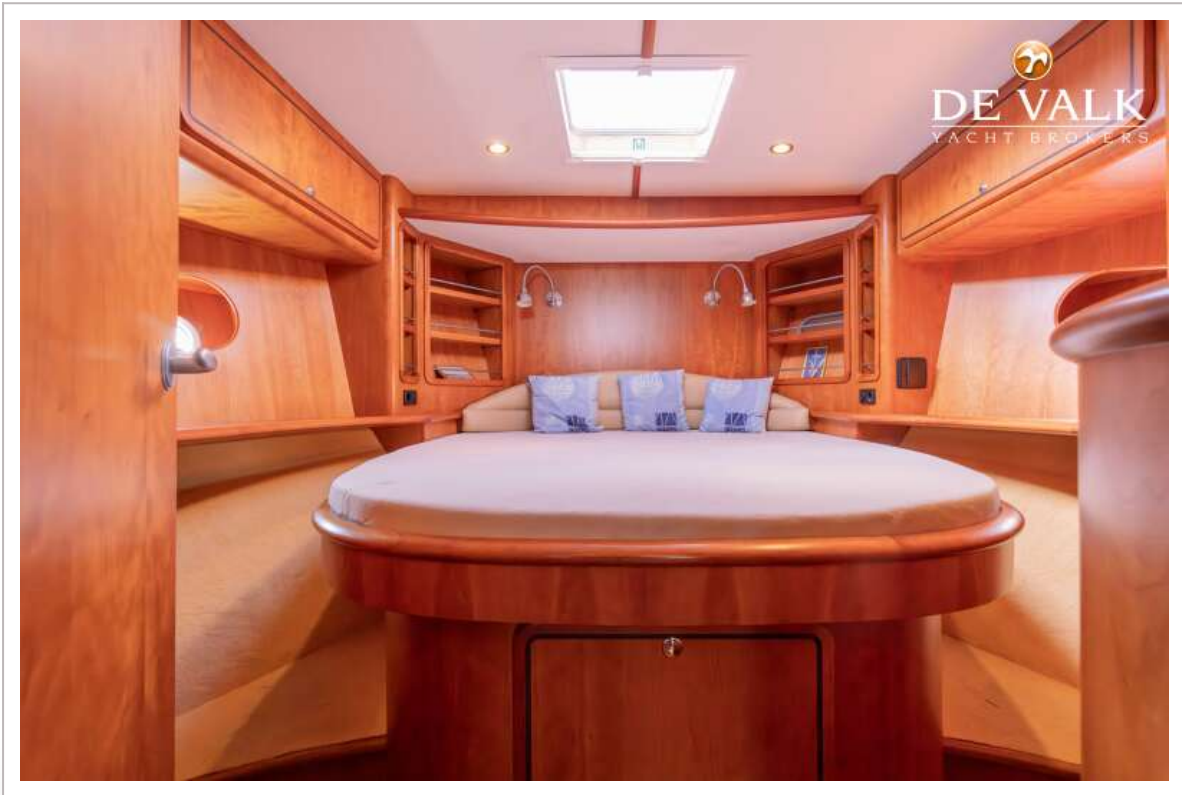


LINSSEN GRAND STURDY 380 SEDAN

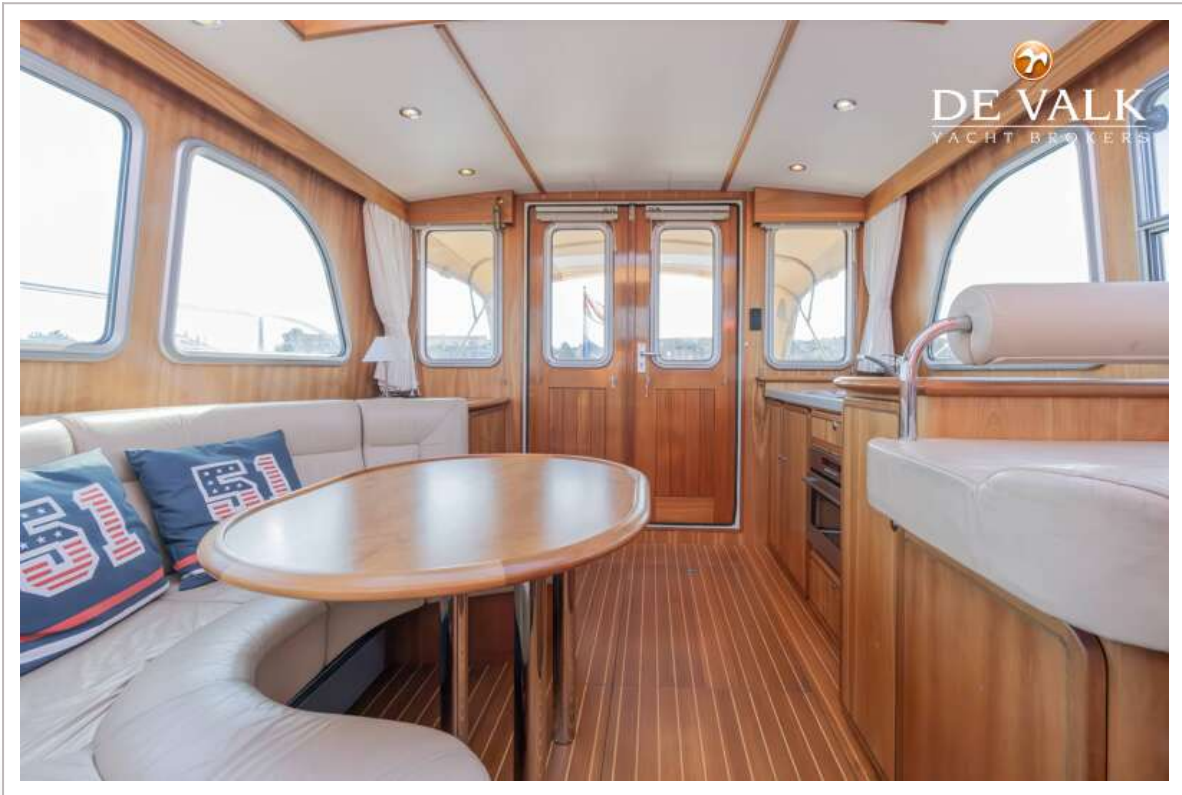
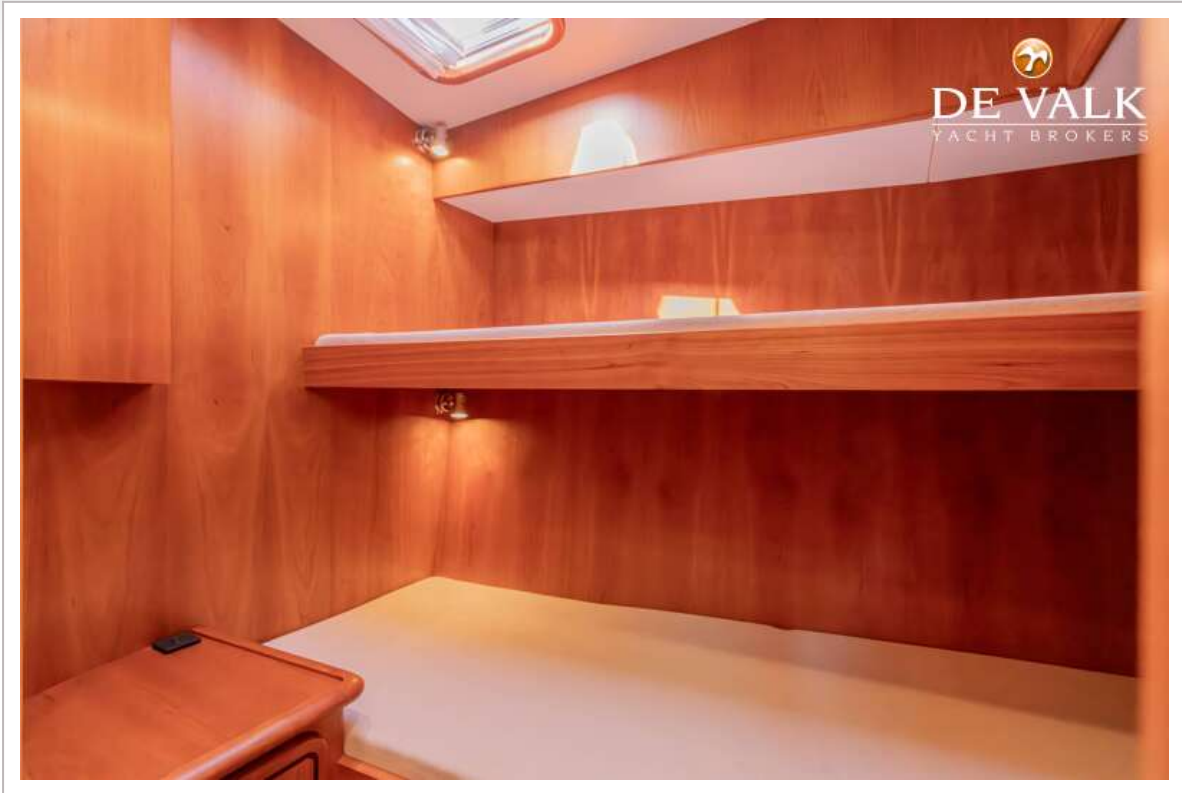




LINSSEN GRAND STURDY 380 SEDAN



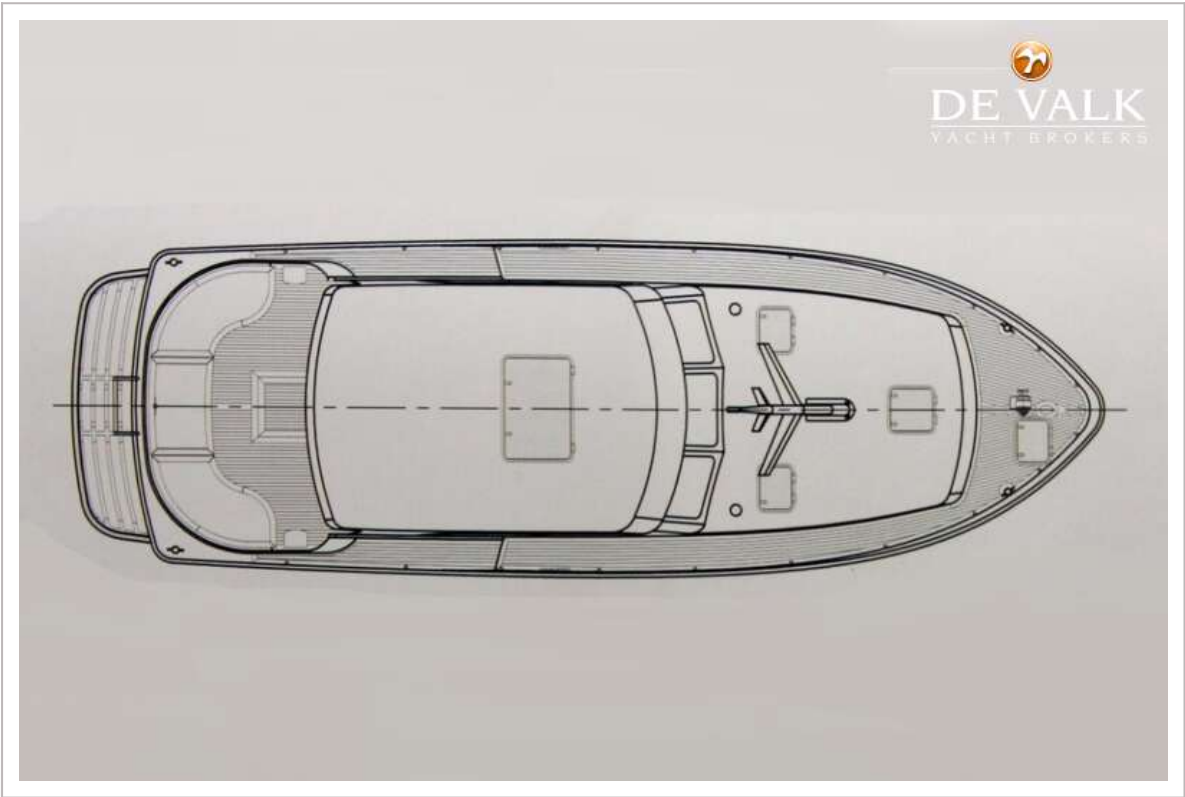
LINSSEN GRAND STURDY 380 SEDAN



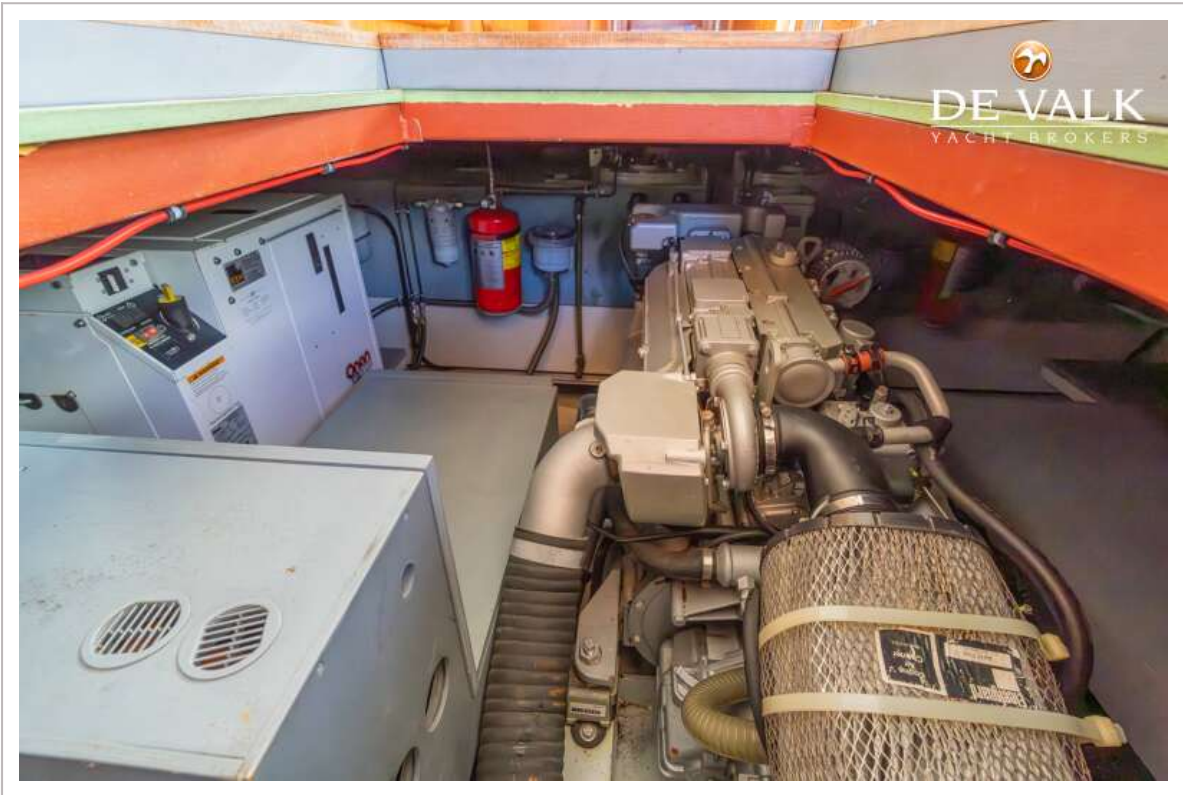
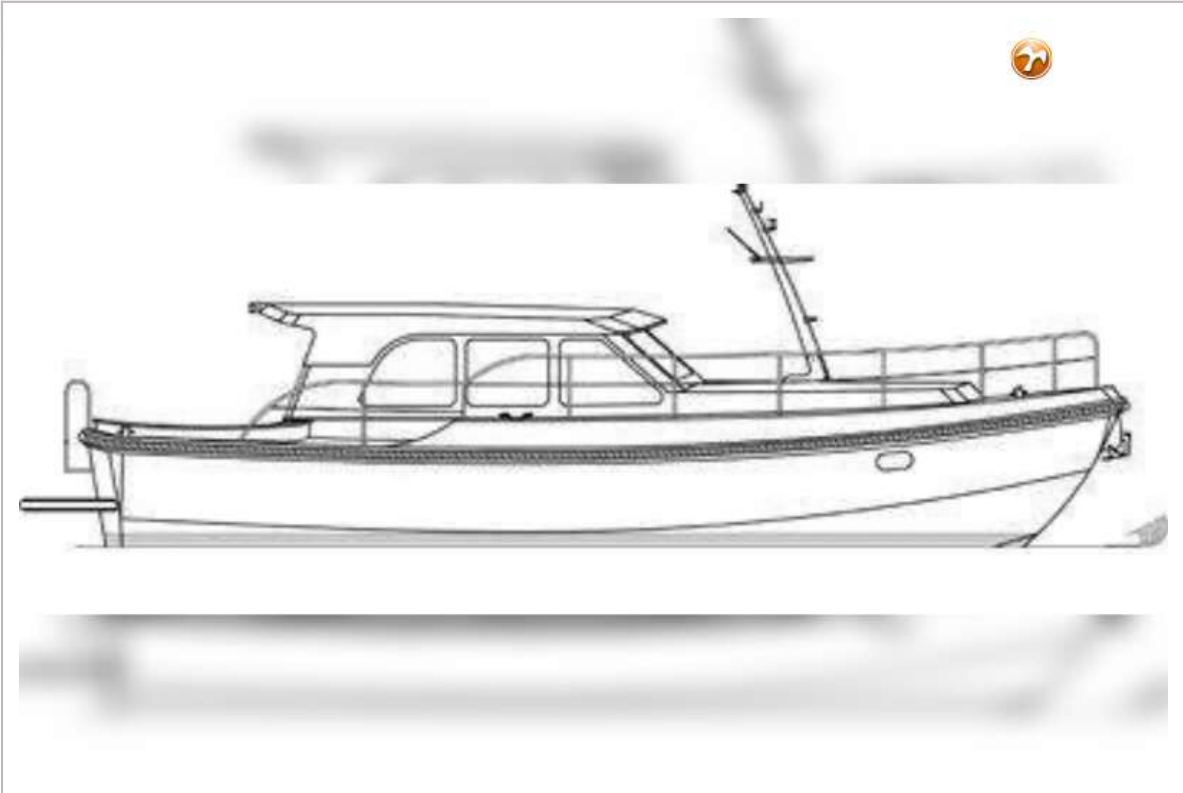
LINSSEN GRAND STURDY 380 SEDAN



# LINSSEN GRAND STURDY 380 SEDAN



LINSSEN GRAND STURDY 380 SEDAN



LINSSEN GRAND STURDY 380 SEDAN

