



DE VALK  
YACHT BROKERS



HANSE 371



DE VALK  
YACHT BROKERS

# HANSE 371

## BROKER'S COMMENTS

The Hanse 371 is an elegant performance cruiser, innovative Judel & Vrolijk design with a classic touch. Her modern interior (in perfect condition, like new) offers lots of space below decks with three full size cabins and ample seating in saloon. Shiny woodwork with light panels, enough storage space throughout. Her deck layout with self-tacking jib and wheel steering makes her very easy to handle. "Scarab" is very well kept, with good navigation and sailing equipment.

*Jochem Heijermans*

## SPECIFICATIONS

<b>Dimensions</b>	11.50 x 3.59 x 1.98 (m)	<b>Builder</b>	Hanse Yachts
<b>Built</b>	2003	<b>Cabins</b>	3
<b>Material</b>	GRP	<b>Berths</b>	6
<b>Engine(s)</b>	1 x Volvo Penta MD2030D-BT diesel	<b>Hp/Kw</b>	29.00 (hp), 21.34 (kw)
<b>Asking price</b>	€ 89.990 (VAT Paid)	<b>Lying</b>	elsewhere / Not at sales office

## CONTACT

<b>Sales office</b>	De Valk Belgium	<b>Telephone</b>	+3258680218
<b>Address</b>	1401 PT Nieuwpoort Belgium	<b>E-mail</b>	belgium@devalk.nl

## DISCLAIMER

These particulars are given in good faith as supplied but cannot be guaranteed.



## GENERAL

<b>Model</b>	HANSE 371
<b>Type</b>	sailing yacht
<b>LOA (m)</b>	11,50
<b>Beam (m)</b>	3,59
<b>Draft (m)</b>	1,98
<b>Air draft (m)</b>	18,50
<b>Headroom (m)</b>	1,95
<b>Year built</b>	2003
<b>Builder</b>	Hanse Yachts
<b>Country</b>	Germany
<b>Designer</b>	Judel / Vrolijk & Co
<b>Displacement (t)</b>	6,9
<b>Ballast (tonnes)</b>	2,46
<b>CE norm</b>	A
<b>Hull material</b>	GRP
<b>Hull colour</b>	blue Wrapped
<b>Hull shape</b>	round-bilged
<b>Keel type</b>	fin keel
<b>Superstructure material</b>	GRP
<b>Rubbing strake</b>	plastic Black
<b>Deck material</b>	GRP
<b>Deck finish</b>	teak
<b>Superstructure deck finish</b>	non-skid moulded in
<b>Cockpit deck finish</b>	teak
<b>Antifouling (year)</b>	2023
<b>Window frame</b>	aluminium
<b>Window material</b>	polycarbonate
<b>Deckhatch</b>	4 x Lewmar
<b>Portholes</b>	aluminium
<b>Fuel tank (litre)</b>	steel 80



<b>Level indicator (fuel tank)</b>	yes
<b>Freshwater tank (litre)</b>	polyethylene 230
<b>Blackwater tank (litre)</b>	polyethylene 48
<b>Blackwater tank extraction</b>	deck extraction + pump
<b>Wheel steering</b>	mechanical Whitlock pedestal with a leather covered steering wheel
<b>Emergency tiller</b>	yes
<b>More info on hull</b>	2019 underwater hull sanded back to gelcoat and completely rebui

## ACCOMMODATION

<b>Cabins</b>	3
<b>Berths</b>	6
<b>Interior</b>	cherry High gloss varnished
<b>Floor</b>	woodprint "Teak & Holly look-a-like"
<b>Saloon</b>	Blue upholstery
<b>Headroom saloon (m)</b>	1,95
<b>Heating</b>	diesel ducted hot air Webasto
<b>Chart table</b>	Headroom : 1,98 m
<b>Aft Cabin</b>	2x
<b>Dinette</b>	yes
<b>Convertible berth</b>	Starboard side : 2.10 x 0.60 m
<b>Galley</b>	On starboard side - Headroom : 1.95 m
<b>Countertop</b>	Duropol (White)
<b>Sink</b>	stainless steel 2 x
<b>Cooker</b>	calor gas 2 burner
<b>Oven</b>	Colar gas
<b>Fridge</b>	Top loader with an Isotherm compressor
<b>Hot water system</b>	220V + engine Isotemp
<b>Water pressure system</b>	electrical
<b>Owners cabin</b>	v-bed Front cabin - Headroom: 1.95 m
<b>Bed length (m)</b>	1.95 x 1.55/1.90 (wide)



Wardrobe	drawers and shelves
Bathroom	shared Headroom : 1.93 m
Toilet	shared
Toilet system	manual Jabsco
Wash basin	in the bathroom
Shower	shared
Guest cabin 1	double bed In aft cabin - Headroom : 1.89
Bed length (m)	2.05 x 1.65
Wardrobe	hanging and shelves
Guest cabin 2	double bed In aft cabin - Headroom : 1.89
Bed length (m)	2.05 x 1.65
Wardrobe	hanging and shelves

## MACHINERY

No of engines	1
Make	Volvo Penta
Type	MD2030D-BT
HP	29
kW	21.34
Fuel	diesel
Year installed	2003
Maximum speed (kn)	7
Cruising speed (kn)	6
Engine hours	1375
Engine cooling system	freshwater heat exchanger
Drive	sail-drive
Saildrive seal	(2020)
Engine controls	bowden cable
Gearbox	mechanical
Bowthruster	electric (2007) Vetus
Propeller type	folding Flexofold



<b>Propeller blades</b>	2
<b>Batteries</b>	yes
<b>Start battery</b>	yes
<b>Service battery</b>	2x AGM 200Ah
<b>Bowthruster battery</b>	yes
<b>Battery charger</b>	Mastervolt (2009)
<b>Solar panel</b>	yes
<b>Shorepower</b>	with cable

## NAVIGATION

<b>Compass</b>	yes
<b>Electric compass</b>	On autopilot
<b>Depth sounder/log</b>	Raymarine ST 60
<b>Windset</b>	Raymarine
<b>VHF</b>	Simrad RD68
<b>VHF handheld</b>	Standard Horizon HX890
<b>Autopilot</b>	Raymarine + remote control (2015)
<b>Rudder angle indicator</b>	On autopilot
<b>Radar/GPS/plotter</b>	Raymarine Aixom 9 (2021)
<b>Navtex</b>	ICS NAV6
<b>AIS transceiver</b>	Raymarine Class B (2021)
<b>Navigation lights</b>	yes

## EQUIPMENT

<b>Sprayhood</b>	(2019)
<b>Cockpit table</b>	yes
<b>Bathing platform</b>	yes
<b>Boarding ladder</b>	stainless steel
<b>Anchor</b>	yes
<b>Windlass</b>	electrical
<b>Sea railing</b>	wire



<b>Grab rail (superstructure)</b>	wood
<b>Fenders</b>	yes
<b>Mooring lines</b>	yes
<b>Radio</b>	yes
<b>Speakers in salon</b>	yes

## RIGGING

<b>Rigging</b>	fractional
<b>Standing rigging</b>	wire
<b>Brand mast</b>	Sparcraft
<b>Material mast</b>	aluminium
<b>Spreaders</b>	2 x Set of spreaders
<b>Mainsail</b>	Wittevrongel (2006)
<b>Mainsail cover</b>	Lazy-Bag mainsail cover with Lazy-Jacks
<b>Jib</b>	Wittevrongel (2018)
<b>Genoa</b>	Wittevrongel 130% (2009)
<b>Cutter furler</b>	Facnor Flat Deck
<b>Gennaker</b>	95% surface
<b>Reefing System</b>	slabreefing
<b>Backstay adjuster</b>	tackle
<b>Boomvang</b>	mechanical and tackle
<b>Primary sheet winch</b>	2x Harken 44ST
<b>Secondary sheet winch</b>	2x Harken 40ST
<b>Multifunctional winches</b>	yes



# HANSE 371









# HANSE 371

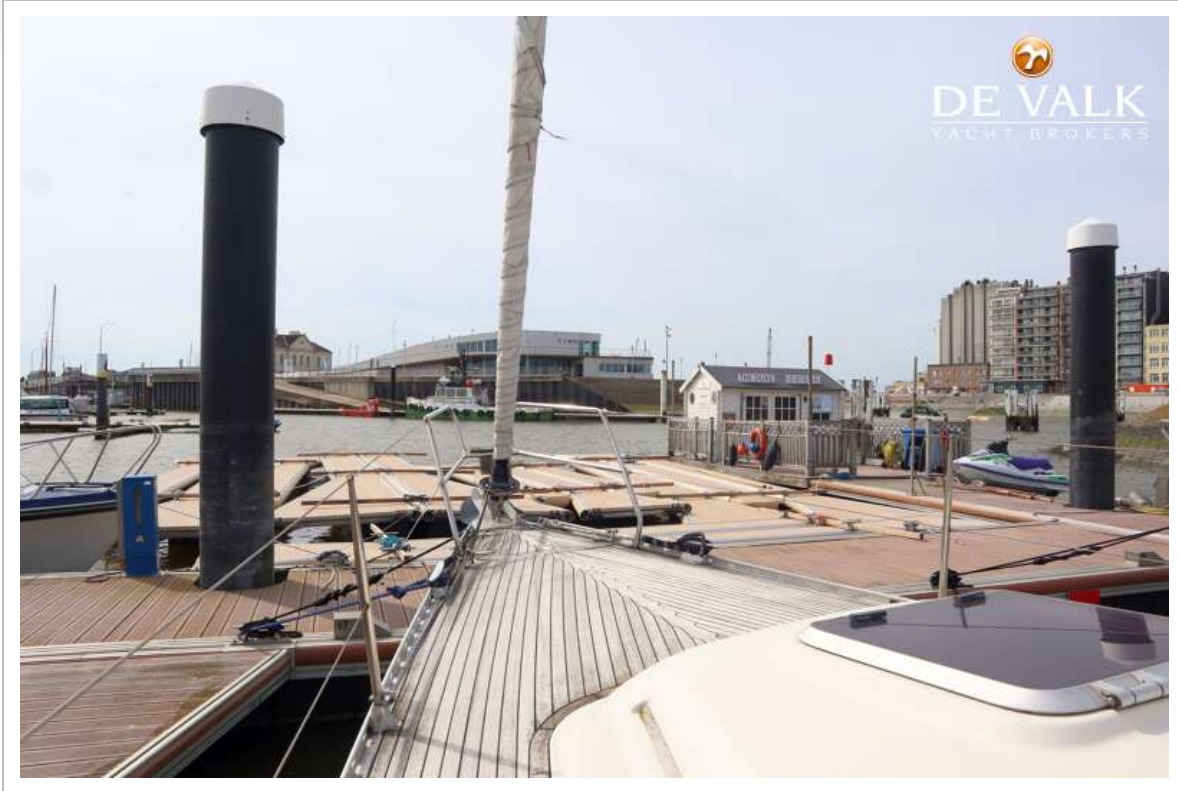


# HANSE 371



# HANSE 371





# HANSE 371



# HANSE 371





# HANSE 371



# HANSE 371



# HANSE 371



# HANSE 371



# HANSE 371





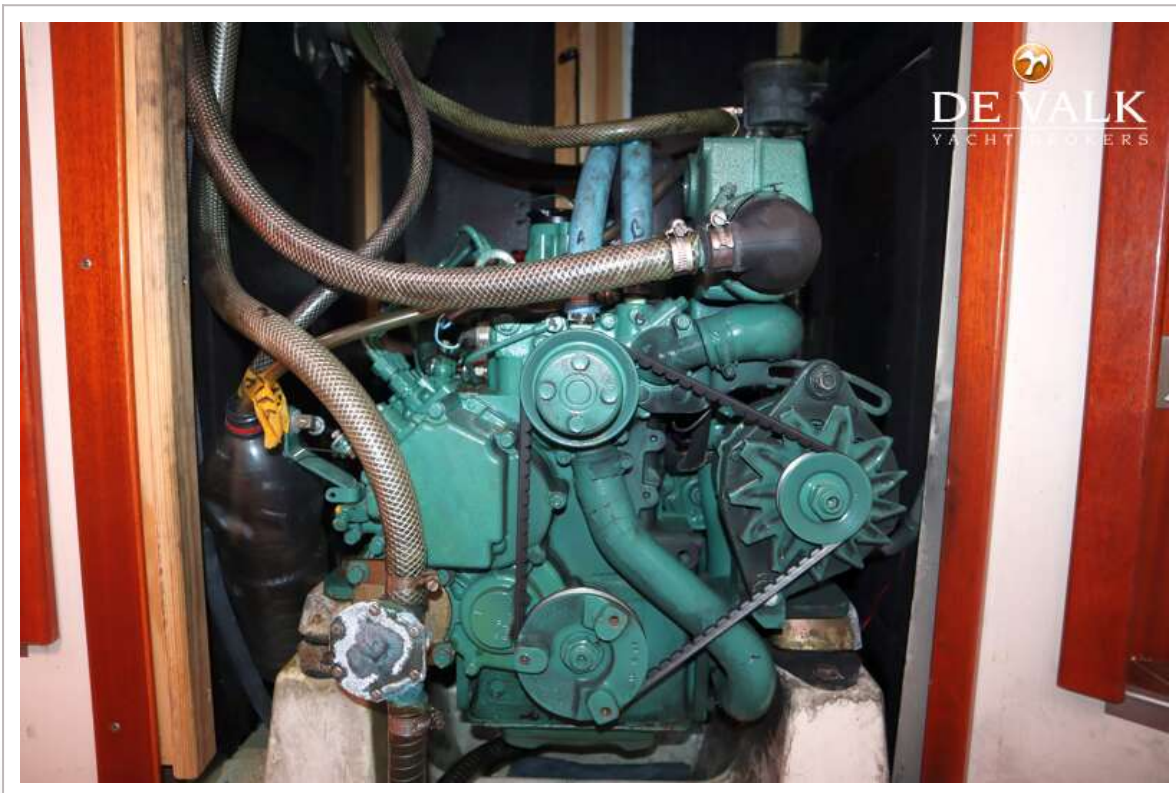
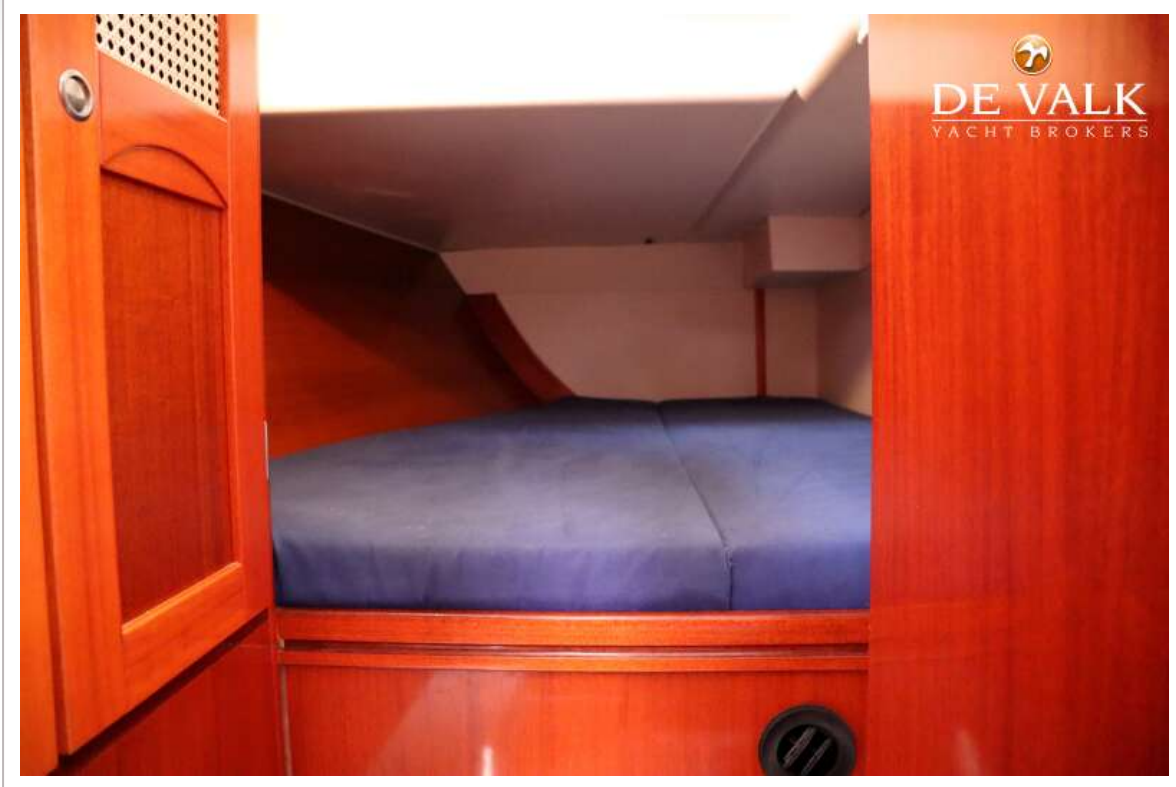
# HANSE 371







# HANSE 371



# HANSE 371

