



DUFOUR 385 GRAND LARGE



# DUFOUR 385 GRAND LARGE

## BROKER'S COMMENTS

This Dufour 385 Grand'large from 2006 has only been used by her first and current owner. With her relatively shallow keel of 1,76m you can pretty much use her anywhere and the 3 comfortable cabins can be enjoyed by you and your family and/or guests. This very well maintained Dufour Grand large is the limited edition version, which means that she is equipped with a lot of extras.. Now to be admired and inspected in Hindeloopen 7 days a week.

*Johan Nooitgedagt*

## SPECIFICATIONS

<b>Dimensions</b>	11.72 x 3.93 x 1.76 (m)	<b>Builder</b>	Dufour Yachts SA
<b>Built</b>	2006	<b>Cabins</b>	3
<b>Material</b>	GRP	<b>Berths</b>	7
<b>Engine(s)</b>	1 x Volvo Penta D2-40 diesel	<b>Hp/Kw</b>	40 (hp), 29.40 (kw)
<b>Asking price</b>	sold (VAT )	<b>Lying</b>	contact Hindeloopen

## CONTACT

<b>Sales office</b>	De Valk Hindeloopen	<b>Telephone</b>	+31 514 52 40 00
<b>Address</b>	Oosterstrand 1 8713 JS Hindeloopen The Netherlands	<b>E-mail</b>	hindeloopen@devalk.nl

## DISCLAIMER

These particulars are given in good faith as supplied but cannot be guaranteed.



# DUFOUR 385 GRAND LARGE

## GENERAL

<b>Model</b>	DUFOUR 385 GRAND LARGE
<b>Type</b>	sailing yacht
<b>LOA (m)</b>	11,72
<b>LWL (m)</b>	9,84
<b>Beam (m)</b>	3,93
<b>Draft (m)</b>	1,76
<b>Air draft (m)</b>	16,50
<b>Headroom (m)</b>	1,98
<b>Year built</b>	2006
<b>Builder</b>	Dufour Yachts SA
<b>Country</b>	France
<b>Designer</b>	Umberto Felci / Patrick Roséo
<b>Displacement (t)</b>	6,98
<b>Ballast (tonnes)</b>	cast iron 1,95
<b>CE norm</b>	A
<b>Hull material</b>	GRP
<b>Hull colour</b>	white
<b>Hull shape</b>	round-bilged
<b>Keel type</b>	fin keel with bulb
<b>Superstructure material</b>	GRP
<b>Rubbing strake</b>	rubber
<b>Deck material</b>	GRP
<b>Deck finish</b>	non-skid moulded in
<b>Superstructure deck finish</b>	non-skid moulded in
<b>Cockpit deck finish</b>	teak
<b>Antifouling (year)</b>	yes
<b>Window frame</b>	aluminium
<b>Window material</b>	polycarbonate
<b>Portholes</b>	aluminium
<b>Fuel tank (litre)</b>	polyethylene 160



# DUFOUR 385 GRAND LARGE

<b>Freshwater tank (litre)</b>	polyethylene 320
<b>Blackwater tank (litre)</b>	polyethylene
<b>Blackwater tank extraction</b>	deck extraction + uw line
<b>Wheel steering</b>	cable steering 2 x Whitlock
<b>Emergency tiller</b>	yes

## ACCOMMODATION

<b>Cabins</b>	3
<b>Berths</b>	7
<b>Interior</b>	mahogany
<b>Floor</b>	teak and holly
<b>Open cockpit</b>	yes
<b>Saloon</b>	yes
<b>Headroom saloon (m)</b>	1,98
<b>Heating</b>	diesel ducted hot air Webasto
<b>Navigation center</b>	yes
<b>Chart table</b>	yes
<b>Dinette</b>	yes
<b>Dinette to convert into berth</b>	yes
<b>Galley</b>	yes
<b>Countertop</b>	plastic
<b>Sink</b>	stainless steel 2 x
<b>Cooker</b>	calor gas Eno
<b>Oven</b>	Eno
<b>Fridge</b>	Isotherm 12V
<b>Hot water system</b>	220V + engine Quick 20 l
<b>Water pressure system</b>	electrical
<b>Owners cabin</b>	double bed Forward
<b>Bed length (m)</b>	2,35 x 1,40
<b>Wardrobe</b>	drawers and shelves
<b>Bathroom</b>	separate



# DUFOUR 385 GRAND LARGE

Toilet	shared
Toilet system	manual
Wash basin	in the bathroom
Shower	separate
Guest cabin 1	double bed Port
Wardrobe	drawers and shelves
Guest cabin 2	double bed Starboard
Wardrobe	drawers and shelves

## MACHINERY

No of engines	1
Make	Volvo Penta
Type	D2-40
HP	40
kW	29,40
Fuel	diesel
Year installed	2006
Maximum speed (kn)	7
Cruising speed (kn)	6
Consumption (l/hr)	3
Engine cooling system	freshwater heat exchanger
Drive	sail-drive
Engine controls	bowden cable
Gearbox	mechanical
Exhaust	watercooled
Manual bilge pump	yes
Electric bilge pump	yes
Electrical installation	12V & 220V
Batteries	yes
Start battery	yes
Service battery	yes



# DUFOUR 385 GRAND LARGE

Battery monitor	yes
Battery charger	yes
Diode battery combiners	yes
Shorepower	with cable

## NAVIGATION

Compass	2x Plastimo Olympic 135 on steering pedestal
Depth sounder	Raymarine ST60 Tridata
Depth sounder/log	Raymarine ST60 Tridata
Log	Raymarine ST60 Tridata
Windset	Raymarine ST60+ wind needs repair
Repeater	Raymarine ST60 Graphic inside
VHF	Shipmate RS 8300
VHF handheld	Shipmate
Autopilot	Raymarine ST6002
Rudder angle indicator	Raymarine ST6002
Radar	Raymarine
GPS	Raymarine
Radar/GPS/plotter	Raymarine RL 70 C
Weather receiver	Cresta

## EQUIPMENT

Sprayhood with grab rail	yes
Cockpit table	yes
Bathing platform	yes
Boarding ladder	aluminum
Deck shower	Warm & Cold
Anchor	Delta
Anchor chain	yes
Windlass	electrical
Sea railing	stainless steel



# DUFOUR 385 GRAND LARGE

Grab rail (superstructure)	stainless steel
Pushpit	yes
Pulpit	yes
Lifebuoy	yes
Radar reflector	yes
Fenders	yes
Mooring lines	yes
Radio-cd player	Kenwood
Cockpit speakers	yes
Speakers in salon	yes
Clock - barometer	yes

## RIGGING

Rigging	sloop
Standing rigging	wire
Brand mast	Sparcraft
Material mast	aluminium
Spreaders	2 x
Mainsail	yes
Mainsail cover	yes
Battcars	yes
Genoa	yes
Genoa furler	yes
Genoa cover	yes
Reefing System	quick-one-line-reefing
Boomvang	gasspring
Genoa sheetwinches	2 x Harken ST 44.2
Halyard winches	2 x Harken ST 32.2
Multifunctional winches	halyard/sheet winches



# DUFOUR 385 GRAND LARGE





# DUFOUR 385 GRAND LARGE



# DUFOUR 385 GRAND LARGE



# DUFOUR 385 GRAND LARGE



# DUFOUR 385 GRAND LARGE



# DUFOUR 385 GRAND LARGE



# DUFOUR 385 GRAND LARGE



# DUFOUR 385 GRAND LARGE

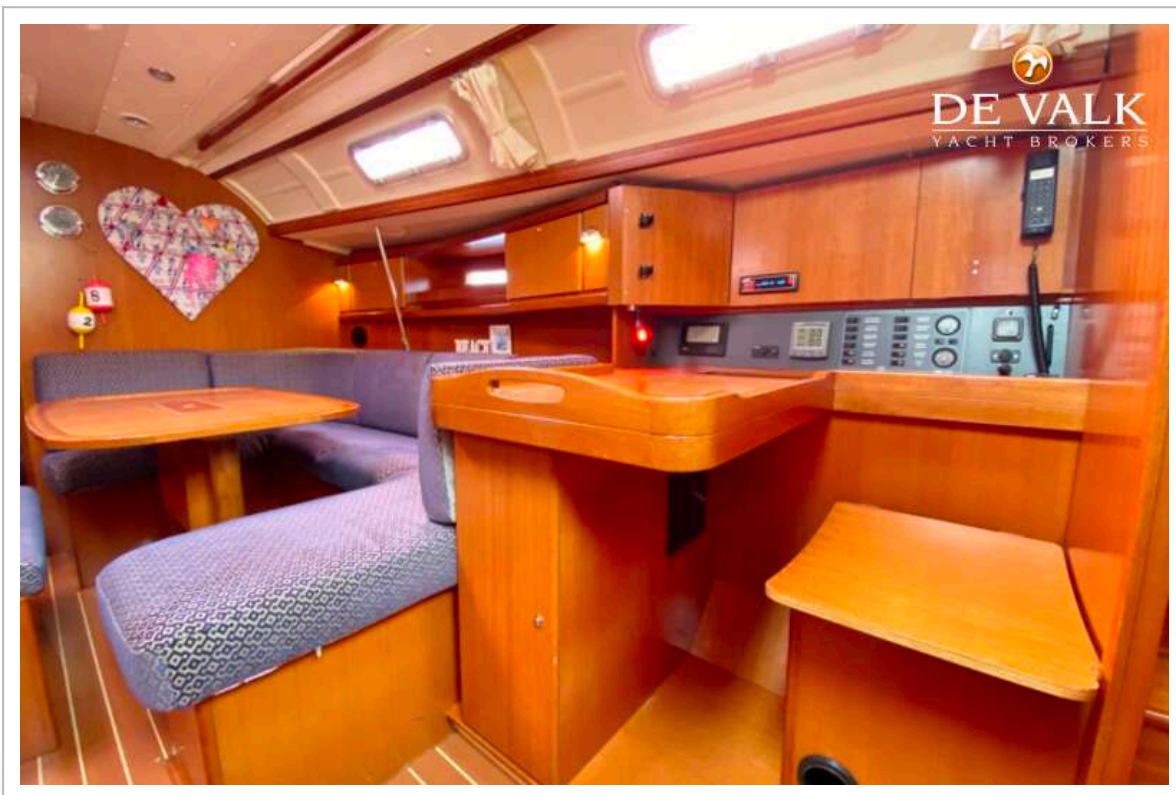
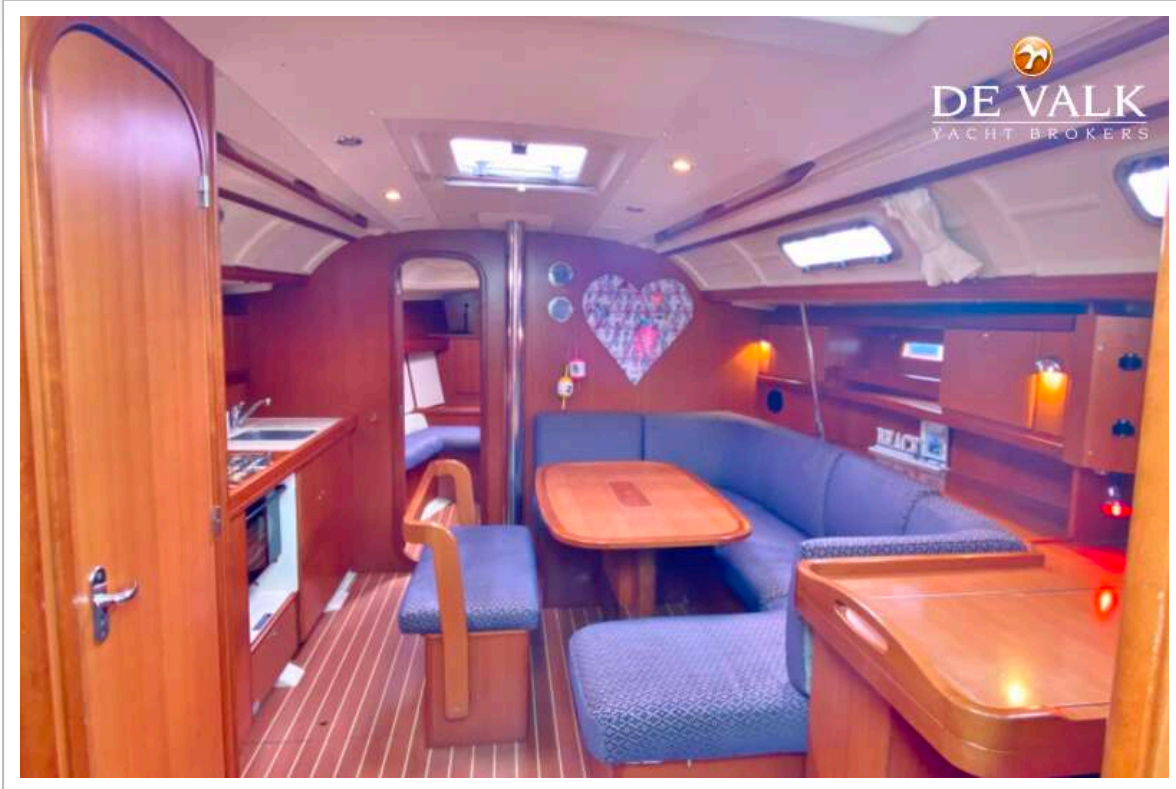


# DUFOUR 385 GRAND LARGE

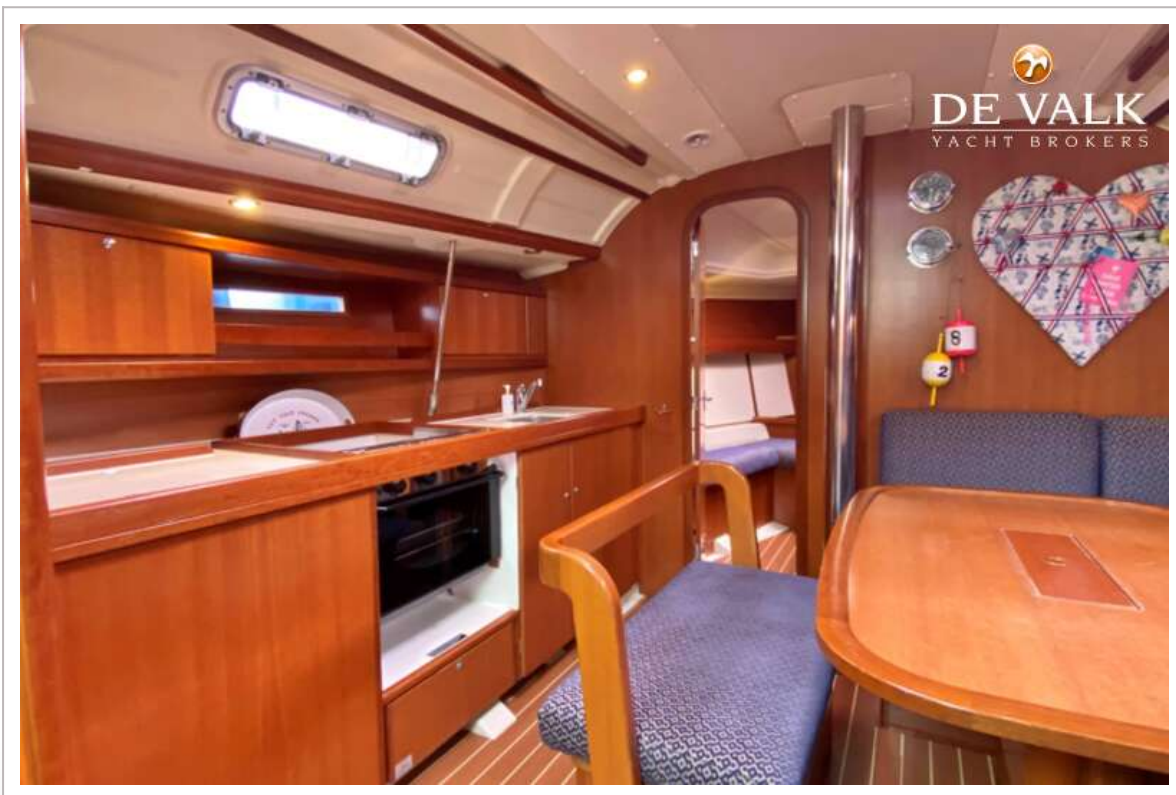
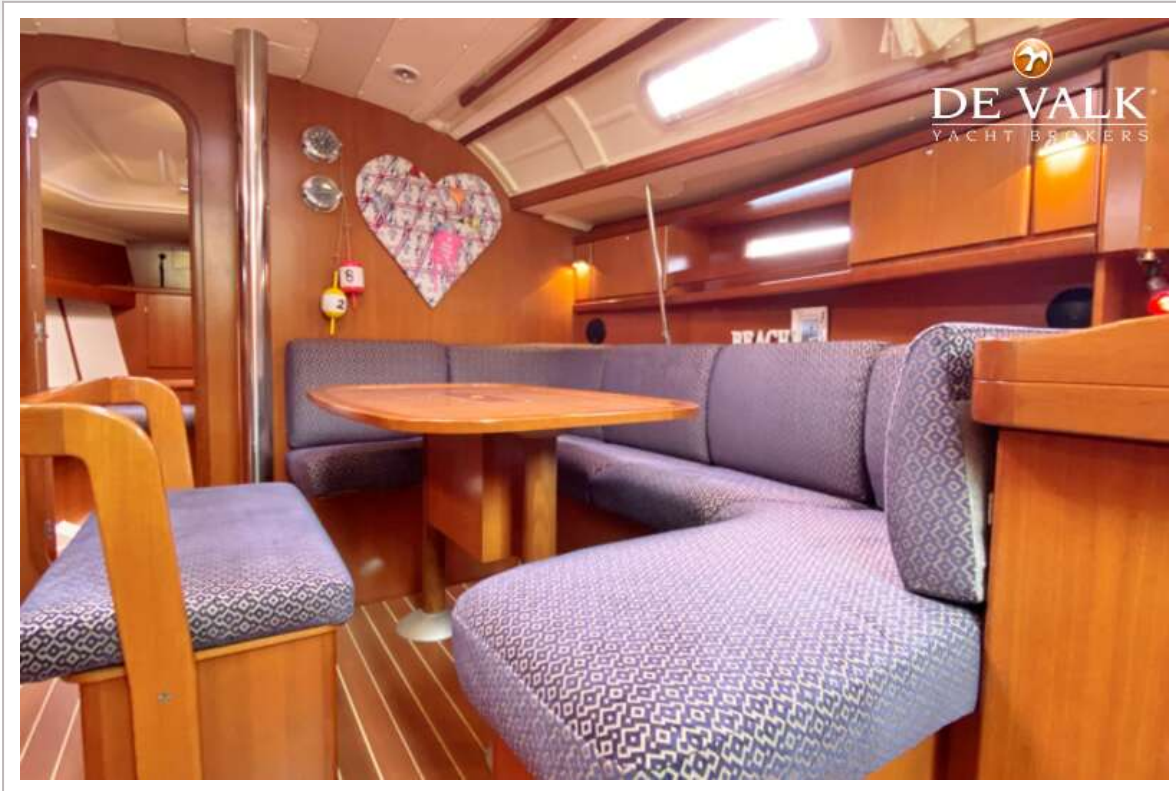




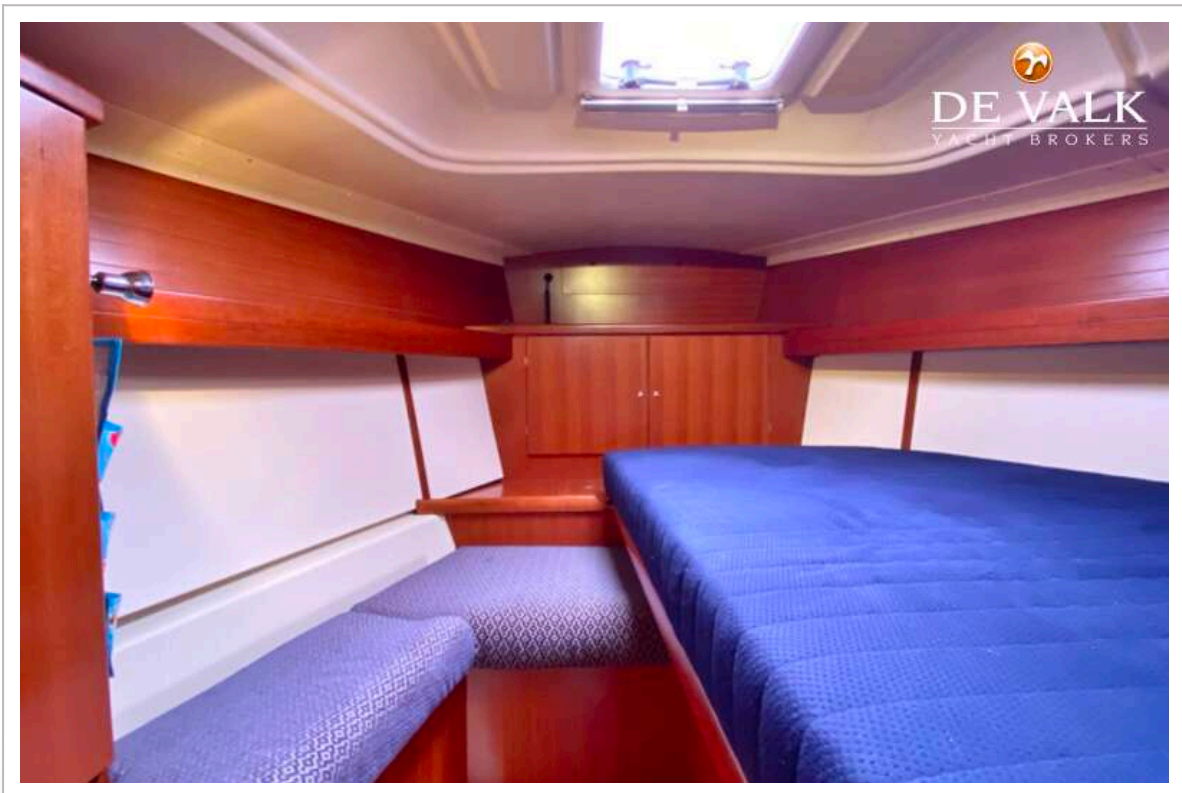
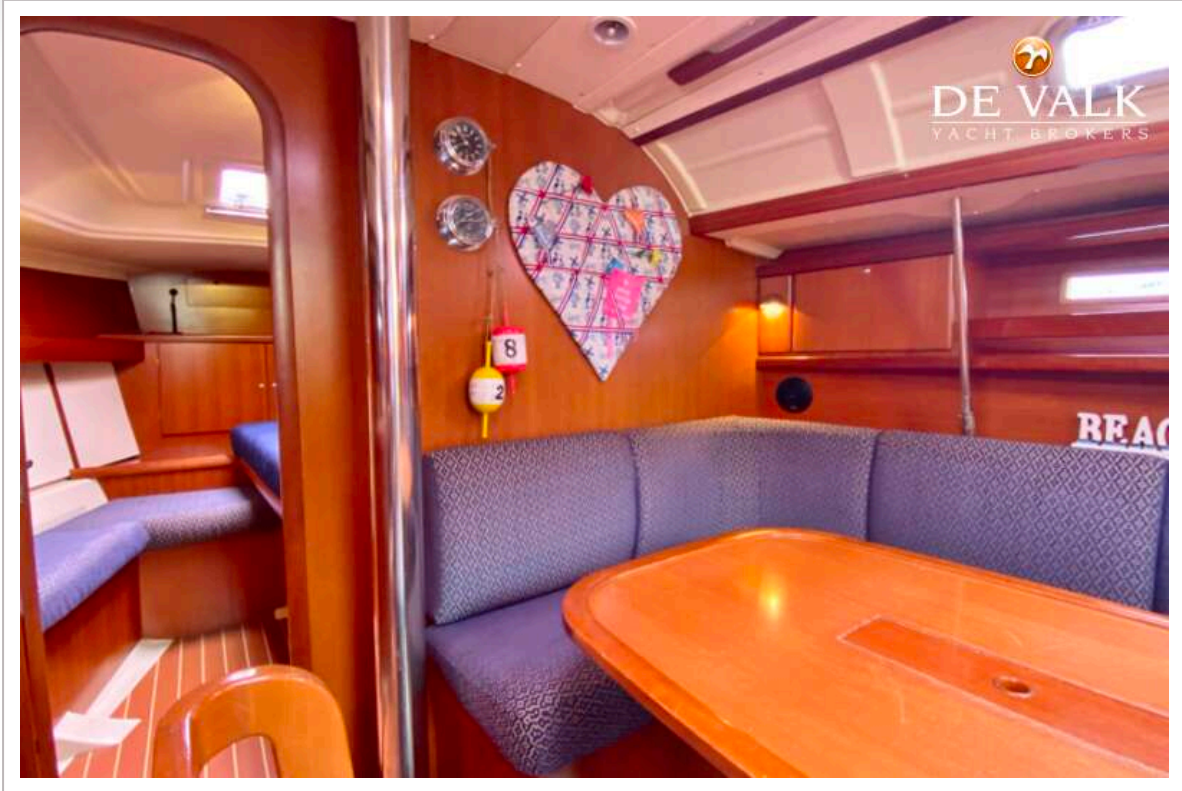
# DUFOUR 385 GRAND LARGE



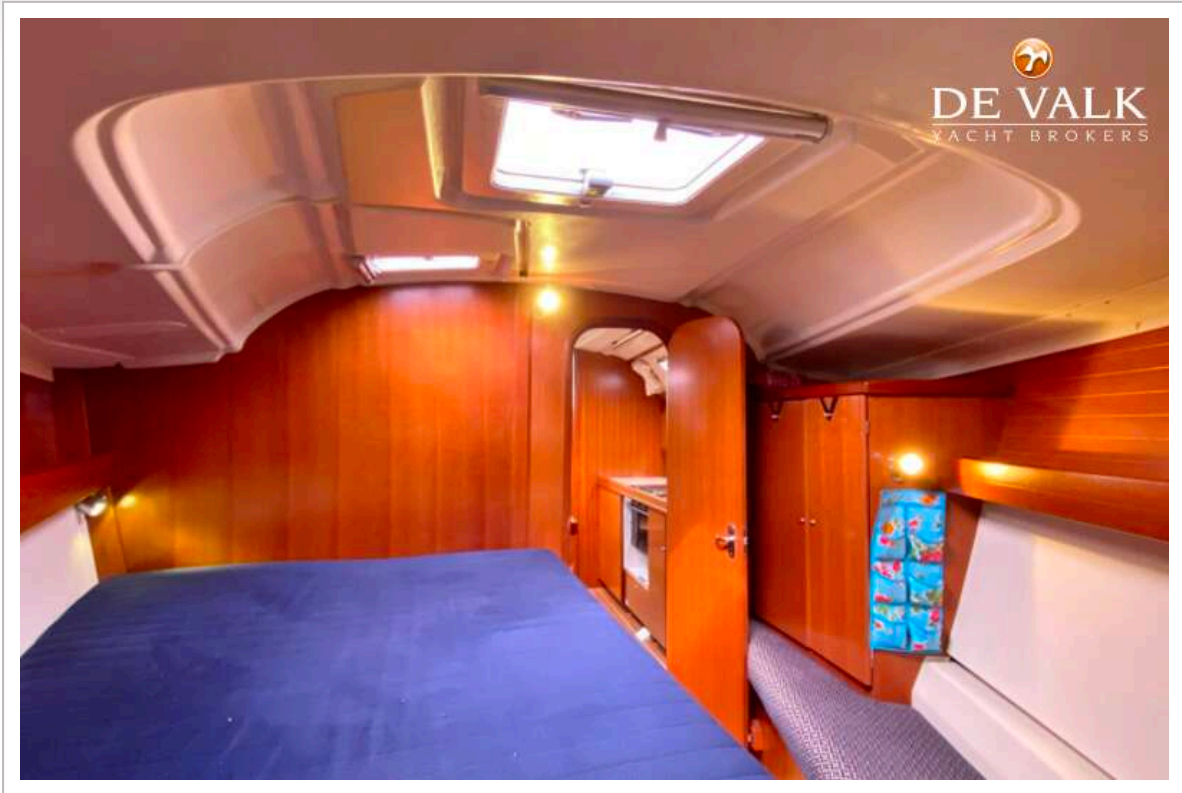
# DUFOUR 385 GRAND LARGE



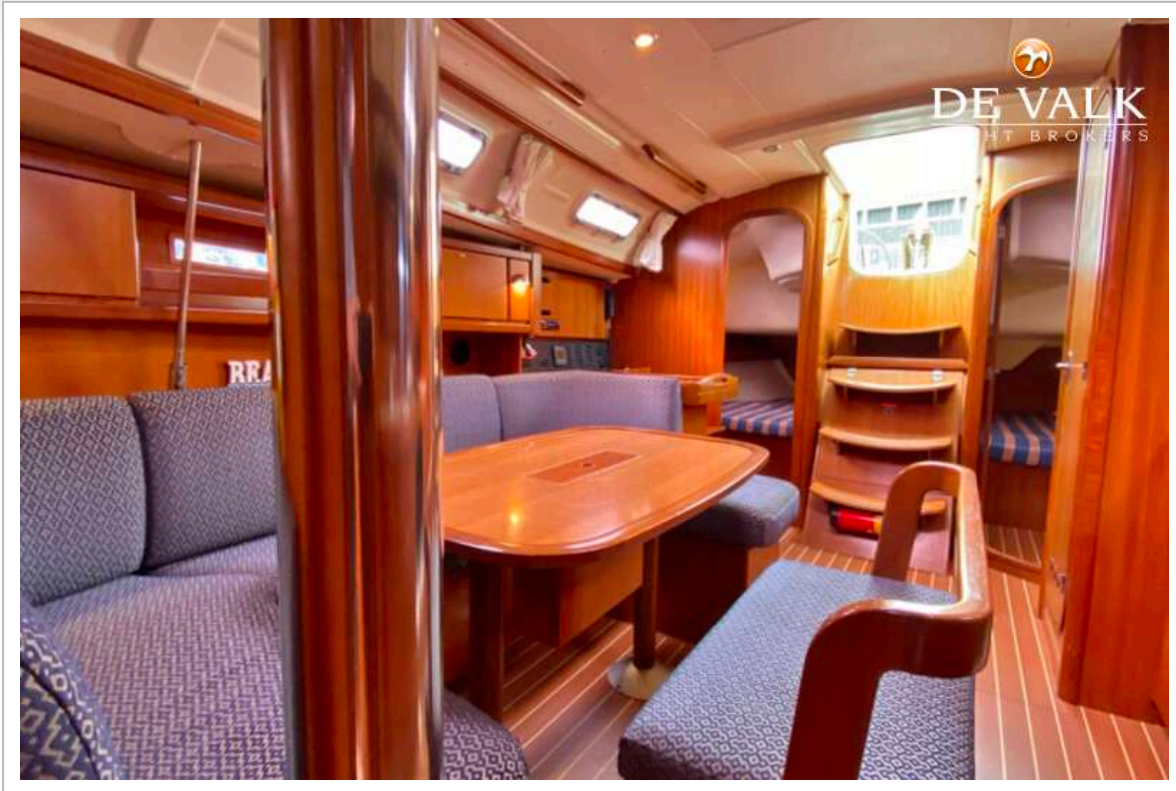
# DUFOUR 385 GRAND LARGE



# DUFOUR 385 GRAND LARGE



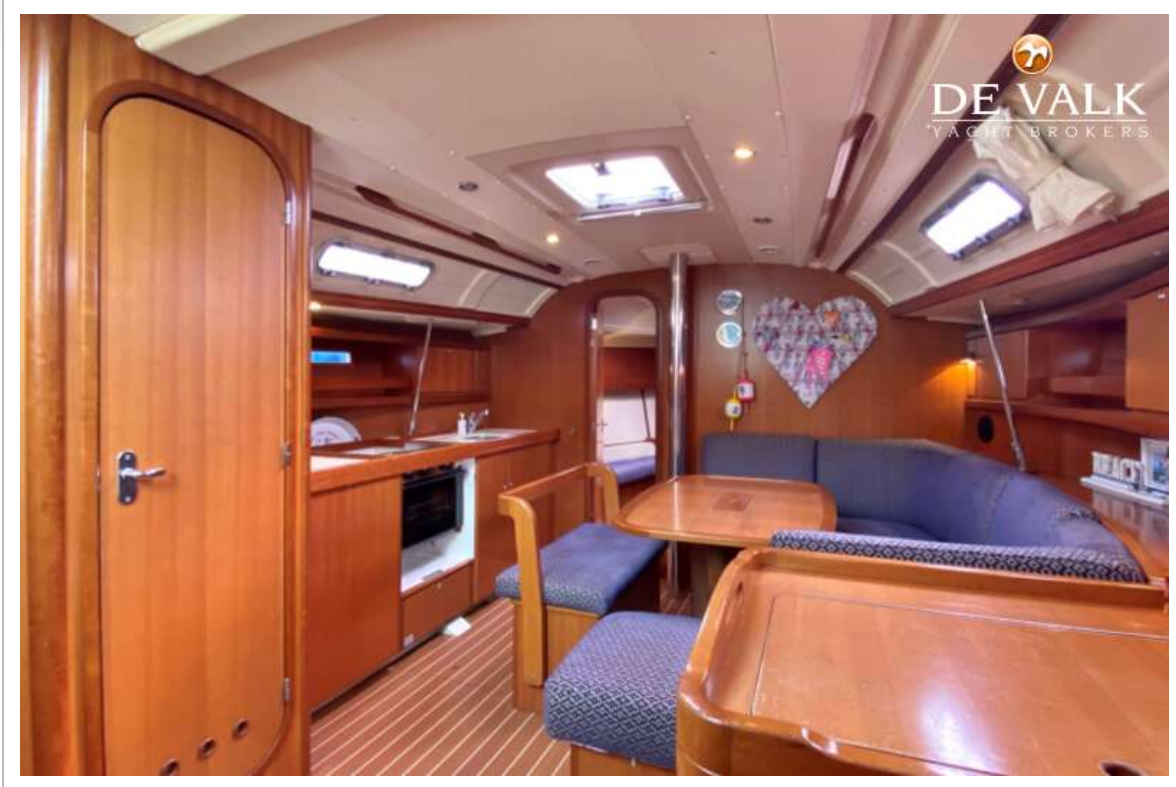
# DUFOUR 385 GRAND LARGE



# DUFOUR 385 GRAND LARGE



# DUFOUR 385 GRAND LARGE



# DUFOUR 385 GRAND LARGE





# DUFOUR 385 GRAND LARGE

