



DE VALK
YACHT BROKERS



HALLBERG RASSY 36



DE VALK
YACHT BROKERS

HALLBERG RASSY 36

BROKER'S COMMENTS

The well known Hallberg Rassy 36 is designed by German Frers as a successor of the famous 352. She has excellent sailing capacities for inland waters and ocean sailing. Below decks the accommodations are more spacious and lighter without compromising the quality in construction and finishing. By owning and sailing the Hallberg Rassy 36 you will appreciate all her character features. She is located on shore at our sales office in Sint Annaland and ready for a visit.

Joris van de Rijt

SPECIFICATIONS

Dimensions	10.87 x 3.55 x 1.70 (m)	Builder	Hallberg Rassy
Built	1990	Cabins	2
Material	GRP	Berths	7
Engine(s)	1 x Volvo Penta MD22A diesel	Hp/Kw	57 (hp), 41.95 (kw)
Asking price	€ 88.500 (VAT Paid)	Lying	at sales office

CONTACT

Sales office	De Valk Sint Annaland	Telephone	+31 166 601 000
Address	Koelhuisweg 4 4697 RM Sint Annaland The Netherlands	E-mail	sintannaland@devalk.nl

DISCLAIMER

These particulars are given in good faith as supplied but cannot be guaranteed.



HALLBERG RASSY 36

GENERAL

Model	HALLBERG RASSY 36
Type	sailing yacht
LOA (m)	10,87
LWL (m)	8,72
Beam (m)	3,55
Draft (m)	1,70
Air draft (m)	15,50
Headroom (m)	1,92
Year built	1990
Builder	Hallberg Rassy
Country	Sweden
Designer	German Frers
Displacement (t)	7,5
Ballast (tonnes)	lead 3,4
CE norm	NA
Hull material	GRP
Hull colour	white With blue striping
Hull shape	round-bilged
Keel type	fin keel
Superstructure material	GRP
Rubbing strake	stainless steel
Deck material	GRP
Deck finish	teak
Superstructure deck finish	teak
Cockpit deck finish	teak
Antifouling (year)	2023
Dorades	2 x plastic air vent & 3 x stainless steel shell
Window frame	aluminium
Window material	perspex
Deckhatch	Hallberg Rassy with Securit glass



Fuel tank (litre)	stainless steel 345 (total in 2 x tank)
Level indicator (fuel tank)	yes
Freshwater tank (litre)	stainless steel 355 (total in 2 x tank)
Level indicator (freshwater)	yes
Wheel steering	cable steering Solimar pedestal with a leather covered stainless steel wheel
Emergency tiller	yes
More info on hull	Underwaterbody new primer + antifouling 2016
More info on paintwork	Blue striping hull and superstructure painted 2016
Extra info	Rudder seal renewed in 2019
Extra info	Through hull fittings & seacocks renewed in 2013

ACCOMMODATION

Cabins	2
Berths	7
Interior	mahogany
Floor	teak and holly
Aft deck	yes
Saloon	yes
Headroom saloon (m)	1,88 - 1,92
Heating	diesel ducted hot air Webasto
Chart table	On Port Side - Headroom : 1,88 m
Aft Cabin	Headroom : 1,45 - 1,63 m
Dinette	Foldable into big dinette
Galley	On Starboard side - Headroom : 1,82 m
Countertop	plastic White
Sink	stainless steel 2 x
Cooker	calor gas 3 burner
Oven	yes
Fridge	Toploader with compressor
Hot water system	220V + engine



HALLBERG RASSY 36

Water pressure system	electrical
Owners cabin	double bed + single bed (after cabin)
Bed length (m)	SB : 2,05 x 1,30 & PS : 2,05 x 0,75
Wardrobe	hanging and shelves
Bathroom	shared Headroom : 1,87 - 1,96 m
Toilet	shared
Toilet system	manual Jabsco
Wash basin	in the bathroom
Shower	shared
Extra info	It is possible to create one large bed in the aft cabin
Guest cabin 1	v-bed (front cabin) - Headroom : 1,85 m
Bed length (m)	1,92 x 1,40
Wardrobe	hanging and shelves
Extra info	Headroom in gangway between saloon and aft cabin : 1,50 m
Extra info	Curtains renewed in 2016

MACHINERY

No of engines	1
Make	Volvo Penta
Type	MD22A
HP	57
kW	41.95
Fuel	diesel
Year installed	1990
Maximum speed (kn)	7,5
Cruising speed (kn)	6,5
Engine cooling system	freshwater heat exchanger
Drive	shaft
Engine controls	bowden cable
Gearbox	mechanical
Propeller type	feathering Max Prop (2021)



Propeller blades	3
Propeller shaft material	stainless steel
Manual bilge pump	yes
Electric bilge pump	yes
Electrical installation	12V / 220V
Start battery	1 x (2020)
Service battery	2 x
Battery charger	Mastervolt Chargemaster Plus 12/75 (2020)
Inverter	Mastervolt Mass Sine 12/2000 (2015)
Shorepower	with cable
Extra info	Oil cooler renewed in 2017
Extra info	Engine mounts renewed in 2015
Extra info	The engine has been professionally serviced annually

NAVIGATION

Compass	C. Plath
Depth sounder	Raymarine (2021)
Log	Raymarine (2021)
Windset	Raymarine (2021)
Repeater	Raymarine I70 (2021) + Autohelm Multi at chart table
VHF	Garmin 300i AIS (2015) at chart table + wireless handheld
Autopilot	Raymarine (New Software P-70 with computer & Linear Drive 2015)
Rudder angle indicator	On autopilot
Plotter	Raymarine A7 in the cockpit
Plotter/GPS	Raymarine Axiom 9 (2021) at chart table
Navtex	LO-KATA Navtex 1
AIS receiver	Ocean Sat Class B
Navigation lights	yes

EQUIPMENT



HALLBERG RASSY 36

Fixed windscreen	yes
Sprayhood	Grey (2019)
Winter cover	Blue, over the complete boat
Cockpit table	1 x wood & 1 x teak (folding)
Boarding ladder	stainless steel
Anchor	CQR Plough
Anchor chain	yes
Windlass	electrical (up only)
Outboard support	yes
Sea railing	wire (Renewed in 2016)
Grab rail (superstructure)	teak
Pushpit	Stainless steel with 2 x teak seat
Pulpit	Stainless steel
Life raft (pers)	container Seaguard (2014)
Last life raft survey	Needs survey
Lifebuoy	yes
Danbuoy	yes
Radar reflector	In maat head
Fenders	yes
Mooring lines	yes
Radio-cd player	JVC
Speakers in salon	yes
Clock - barometer	Wempe
Fire extinguisher	Need to be checked / renewed
Extra info	Blue steering wheel cover

RIGGING

Rigging	sloop
Standing rigging	wire With aluminium tension protectors
Brand mast	Seldén
Material mast	aluminium



HALLBERG RASSY 36

Spreaders	2 sets
Mainsail	Hagoort (2010)
Mainsail cover	With Lazy Jacks
High aspect	Hagoort (2010)
Genoa	Elvstrom DX Medium 140% (2015) with white UV strip
Genoa furler	Reckmann
Gennaker	(2013) on a Facnor furler
Spinnaker	1 x large & 1 x small
Reefing System	slabreefing
Backstay adjuster	hydraulic Navtec
Boomvang	gasspring Selden Racing
Genoa sheetwinches	2 x Lewmar 46ST
Halyard winches	2 x Lewmar on mast
Spinnaker winch	2 x Lewmar 40ST
Reefing winch	1 x Lewmar 8
Spi-pole	aluminium (Hanging on frontside of mast)
Gennaker pole	stainless steel Removable
Extra info	Forestay new in 2016



HALLBERG RASSY 36



HALLBERG RASSY 36



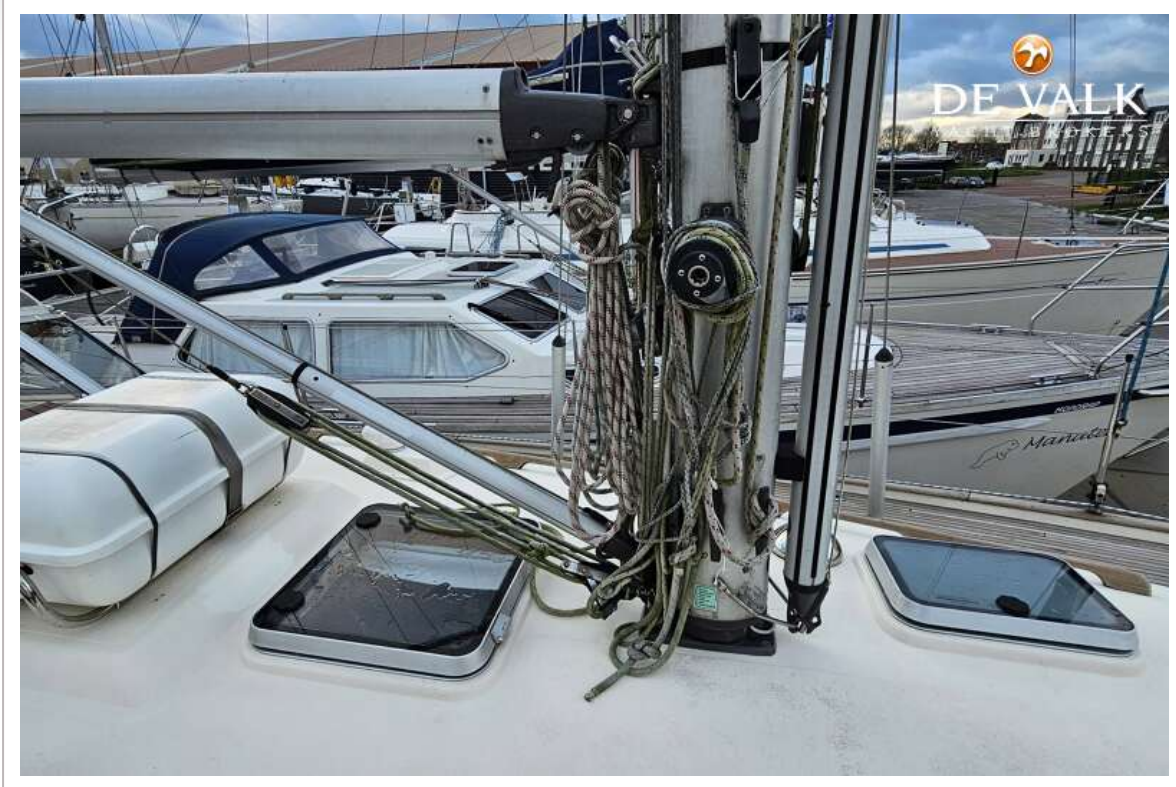
HALLBERG RASSY 36



HALLBERG RASSY 36



HALLBERG RASSY 36



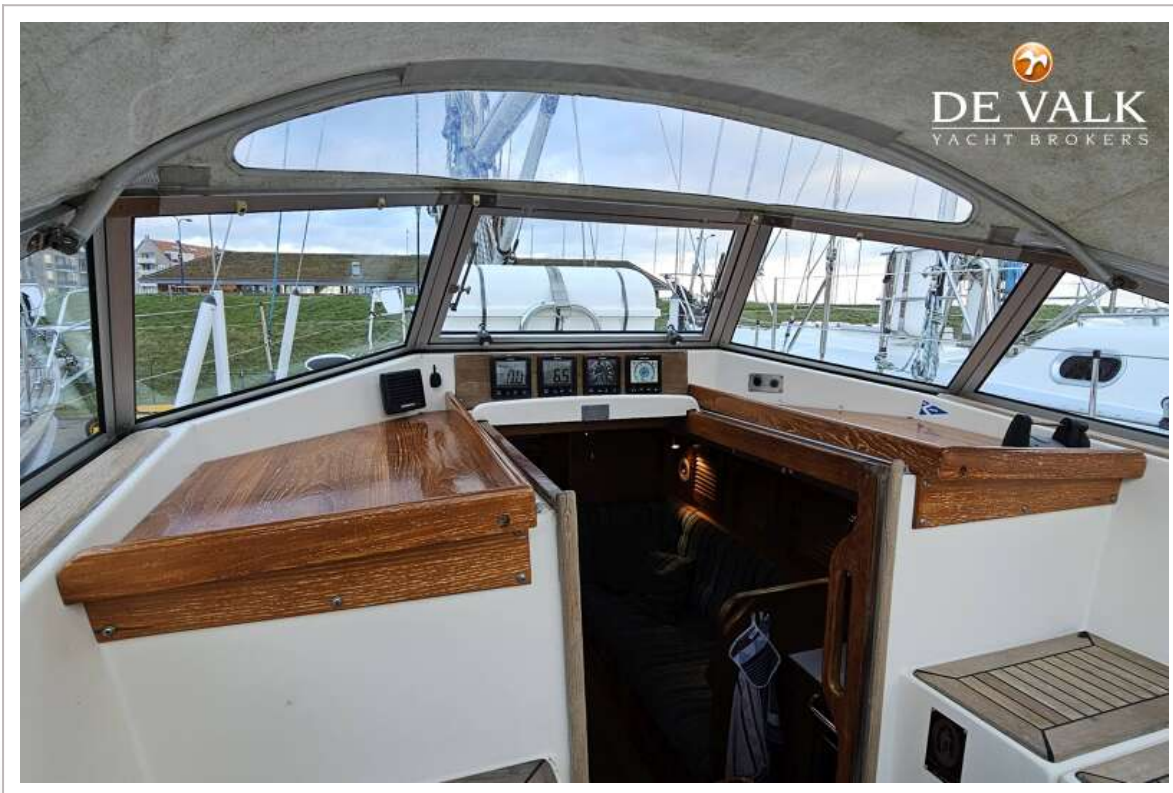
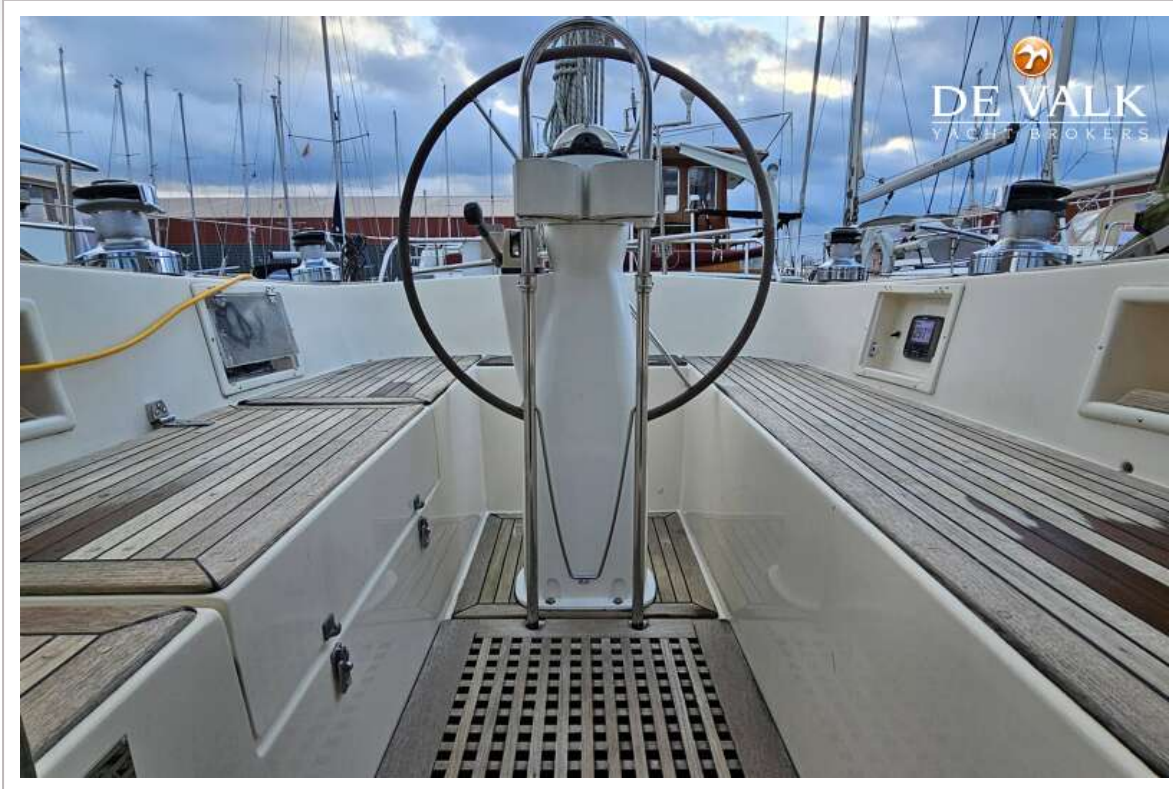
HALLBERG RASSY 36



HALLBERG RASSY 36



HALLBERG RASSY 36



HALLBERG RASSY 36



HALLBERG RASSY 36



HALLBERG RASSY 36

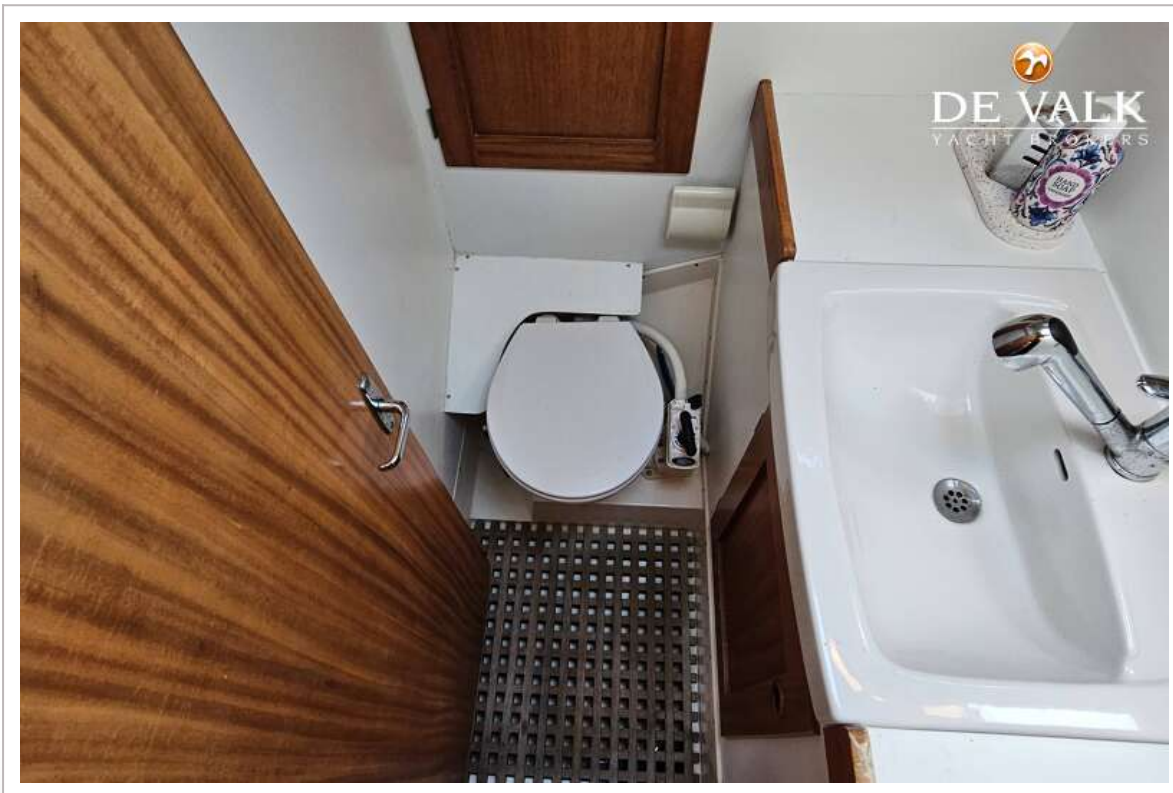


HALLBERG RASSY 36



HALLBERG RASSY 36





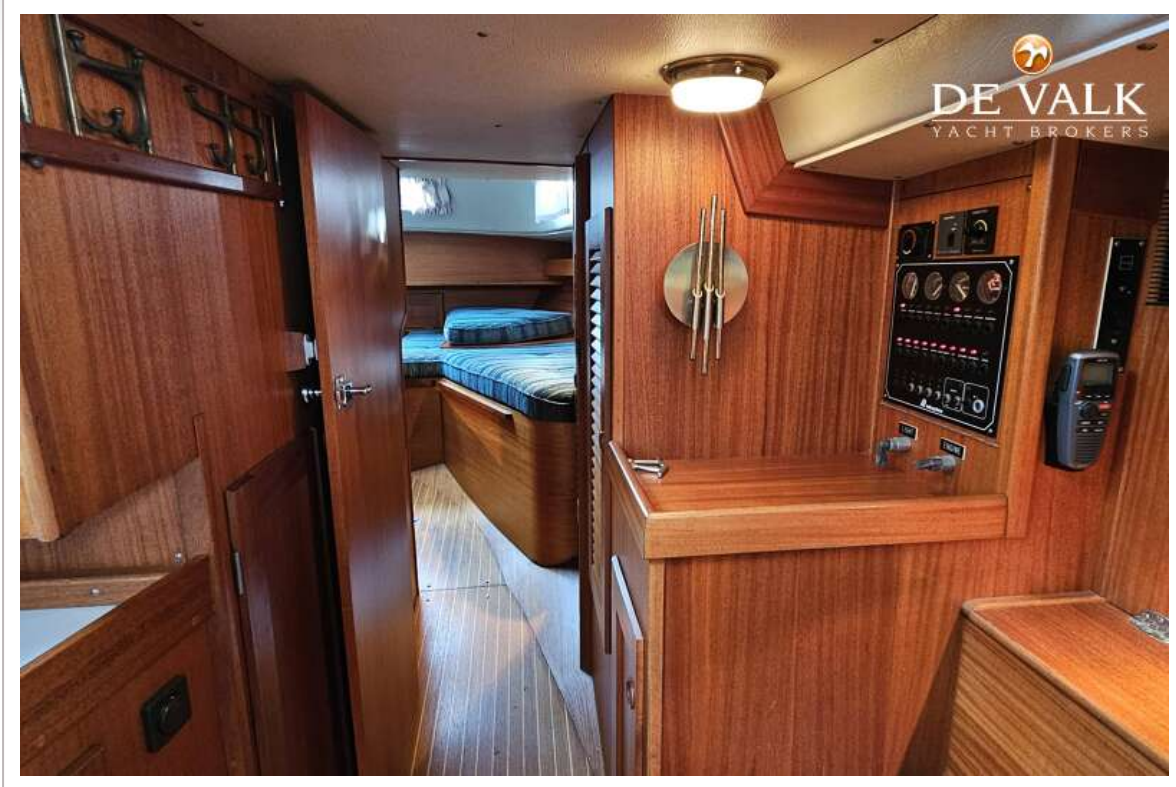
HALLBERG RASSY 36



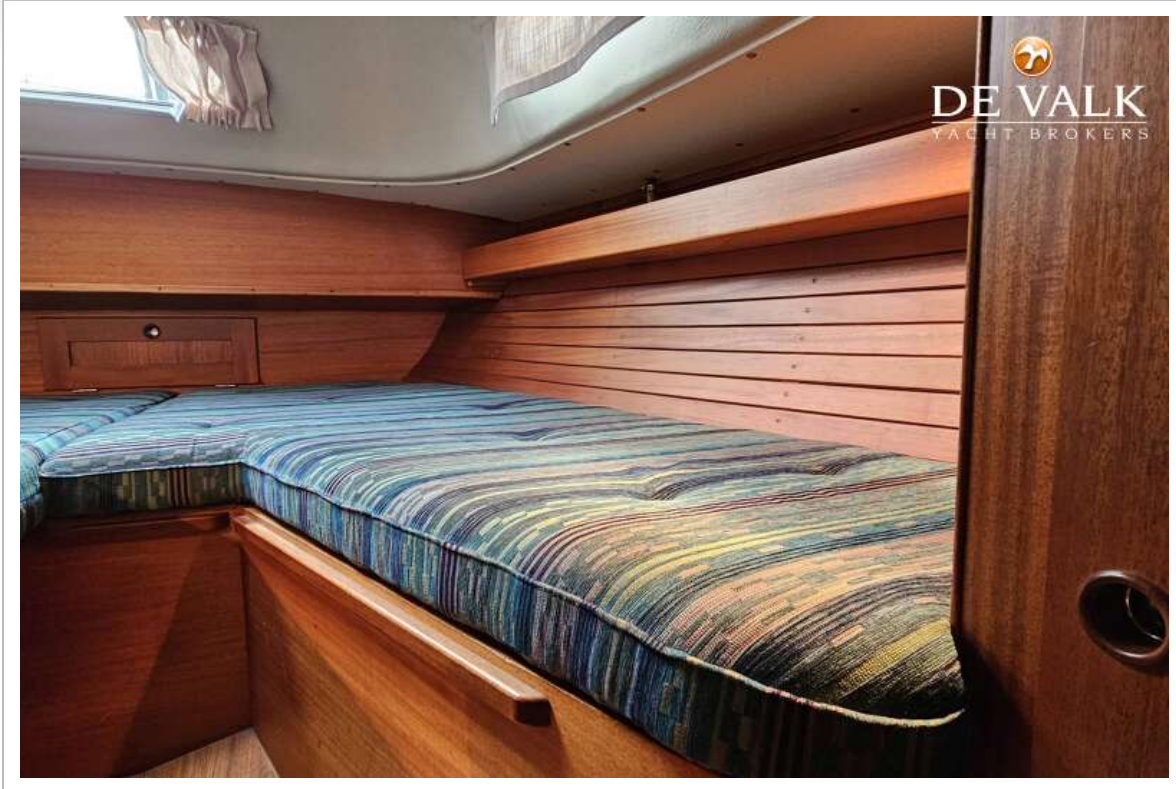
HALLBERG RASSY 36



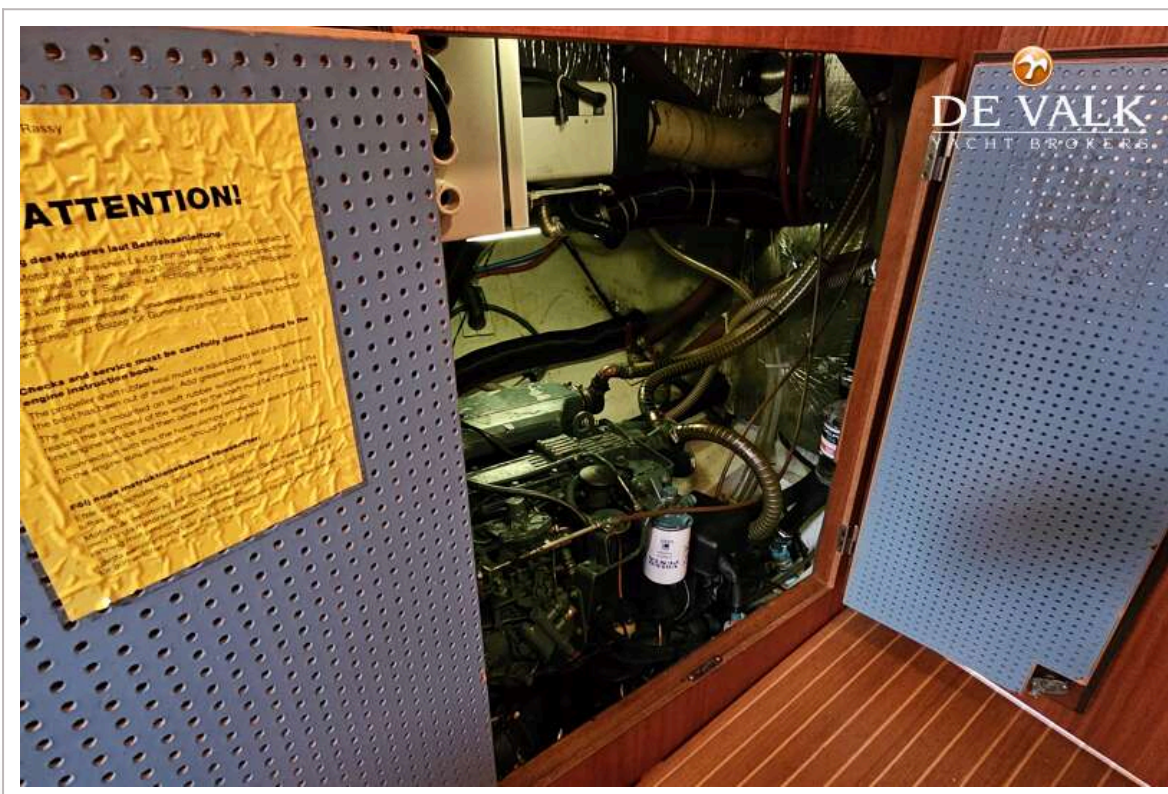
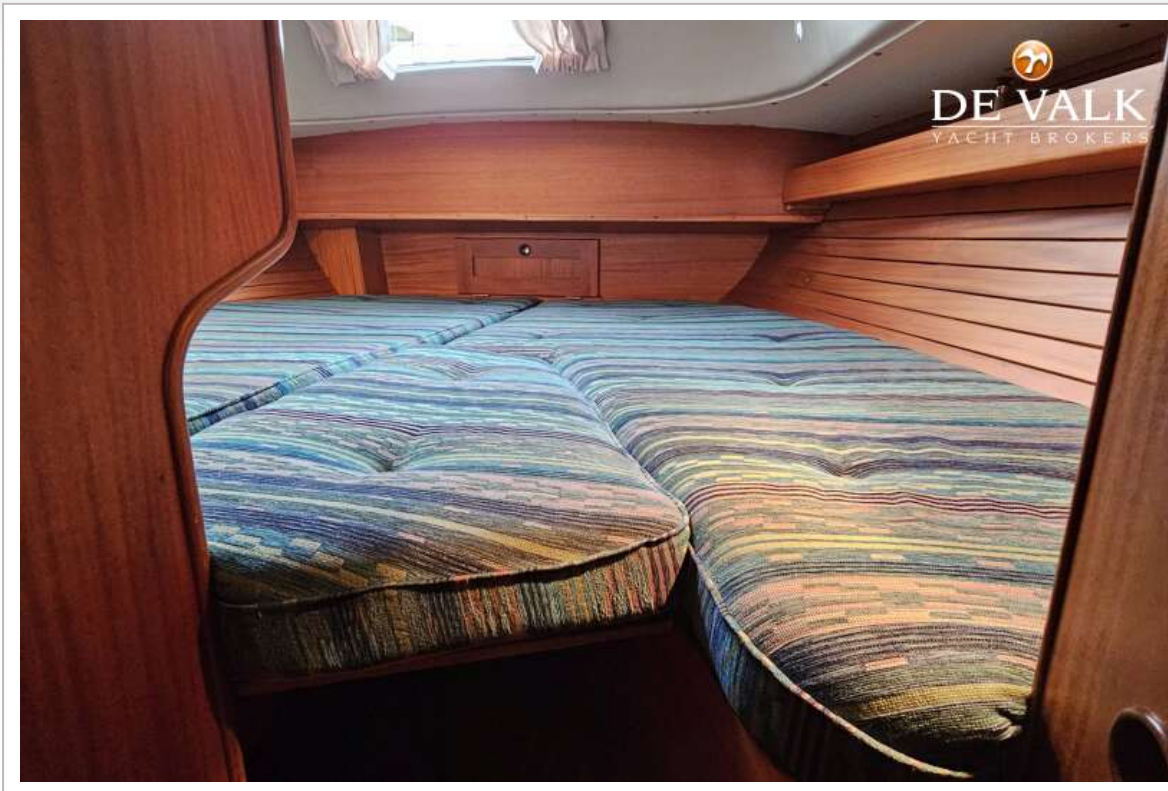
HALLBERG RASSY 36



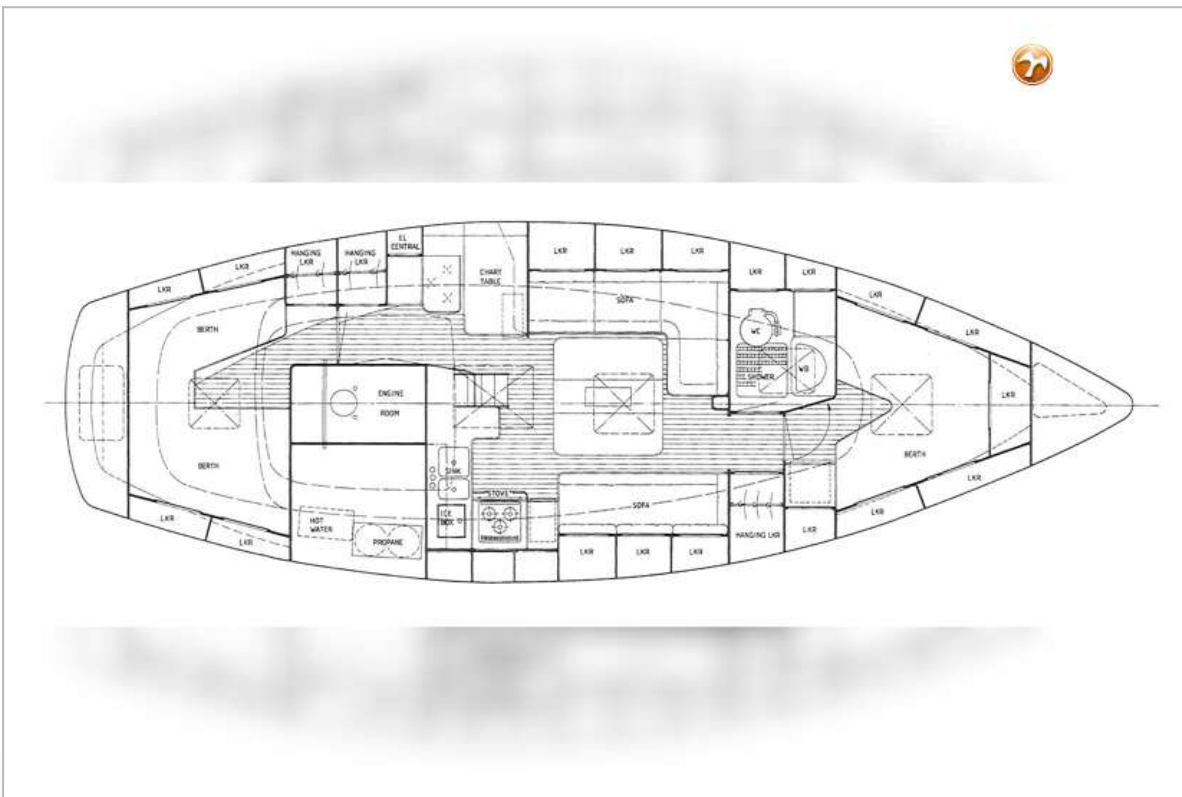
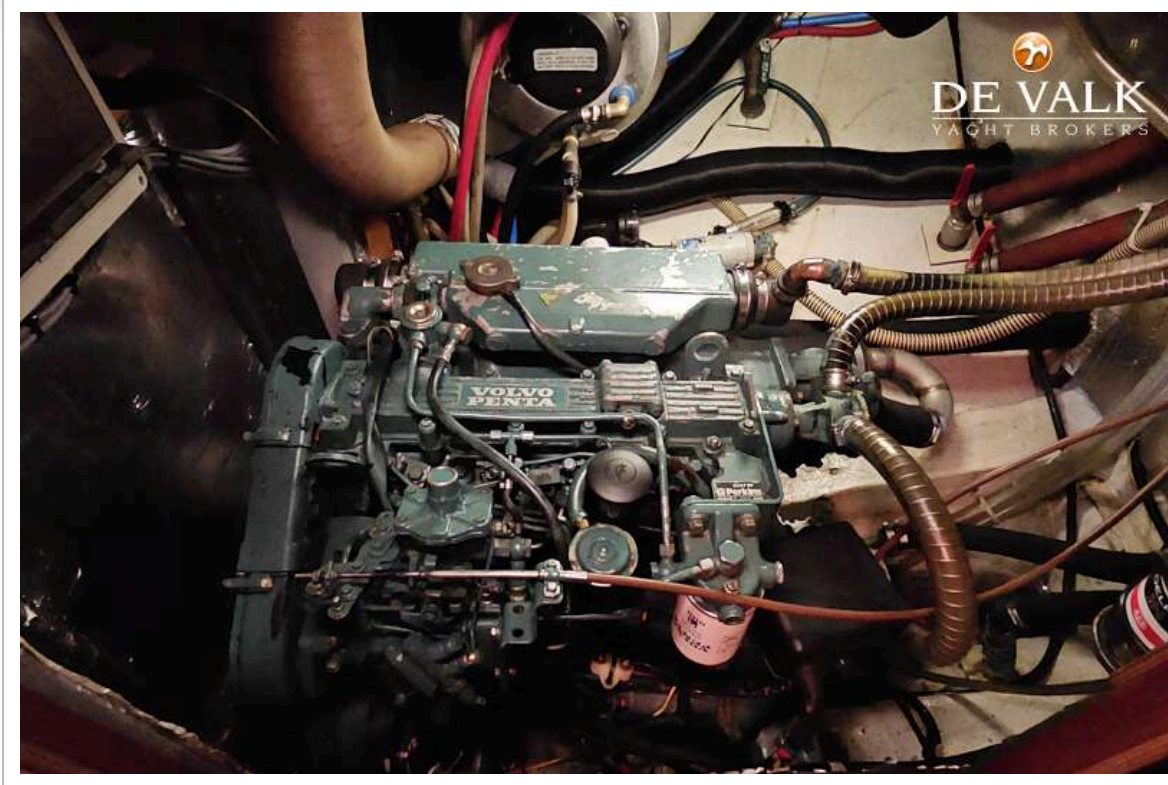
HALLBERG RASSY 36



HALLBERG RASSY 36



HALLBERG RASSY 36



HALLBERG RASSY 36

HR 36 Scandinavia

Designer:
German Frers

Dimensions:
LOA 10.87 m
LWL 8.72 m
Beam 3.55 m
Draft 1.65 m
Displacement 7.5 ton
Keel Weight 3.400 kg Lead
Sail Area 63 m² with Jib
Engine: Volvo Penta MD 22 42 kW 57HP
Speed under power 7.9 knots
Water 350 l
Fuel 330 l
Mast over water 15.5 m

Main sail 30.5 m²
Jib 32.5 m²
Genoa 44 m²
Hardwindjib 20.5 m²
Spinnaker 102 m²
Cruisingspinnaker 80 m²

Design No 962
Hallberg Rassy 36
German Frers
Gusto 1926 - 1" F - Buenos Aires
March 2 1989

