



DE VALK  
YACHT BROKERS



## SWEDEN YACHTS 370



DE VALK  
YACHT BROKERS

## BROKER'S COMMENTS

A yacht in the luxury range: clean, elegant lines together with generous spaces on deck and below makes this yacht "Rendez Vous" is an excellent representative of the Sweden Yachts philosophy. The search for perfection in every detail is found in the quality of finish, the functional layout and the integrity of construction. The 370 is designed for shorthanded sailing with clean deck lines and a comfortable, efficient cockpit.

*Henk Sijbranda*

## SPECIFICATIONS

<b>Dimensions</b>	11.15 x 3.68 x 1.70 (m)	<b>Builder</b>	Sweden Yachts AB
<b>Built</b>	1994	<b>Cabins</b>	2
<b>Material</b>	GRP	<b>Berths</b>	6
<b>Engine(s)</b>	1 x Volvo Penta MD 2030 diesel	<b>Hp/Kw</b>	29.00 (hp), 21.32 (kw)
<b>Asking price</b>	sold (VAT )	<b>Lying</b>	contact Hindeloopen

## CONTACT

<b>Sales office</b>	De Valk Hindeloopen	<b>Telephone</b>	+31 514 52 40 00
<b>Address</b>	Oosterstrand 1 8713 JS Hindeloopen The Netherlands	<b>E-mail</b>	hindeloopen@devalk.nl

## DISCLAIMER

These particulars are given in good faith as supplied but cannot be guaranteed.



# SWEDEN YACHTS 370

## GENERAL

<b>Model</b>	SWEDEN YACHTS 370
<b>Type</b>	sailing yacht
<b>LOA (m)</b>	11,15
<b>LWL (m)</b>	9,00
<b>Beam (m)</b>	3,68
<b>Draft (m)</b>	1,70
<b>Air draft (m)</b>	18,00
<b>Headroom (m)</b>	1,90
<b>Year built</b>	1994
<b>Builder</b>	Sweden Yachts AB
<b>Country</b>	Sweden
<b>Designer</b>	Peter Norlin
<b>Displacement (t)</b>	6,8
<b>Ballast (tonnes)</b>	lead 2,9
<b>CE norm</b>	yes
<b>Hull material</b>	GRP
<b>Hull colour</b>	white
<b>Hull shape</b>	round-bilged
<b>Keel type</b>	wing keel
<b>Superstructure material</b>	GRP
<b>Rubbing strake</b>	stainless steel
<b>Deck material</b>	GRP
<b>Deck finish</b>	teak
<b>Superstructure deck finish</b>	teak
<b>Cockpit deck finish</b>	teak
<b>Antifouling (year)</b>	2015
<b>Dorades</b>	3x
<b>Window frame</b>	aluminium
<b>Window material</b>	tempered glass
<b>Deckhatch</b>	3x



Fuel tank (litre)	stainless steel
Level indicator (fuel tank)	yes
Freshwater tank (litre)	stainless steel
Level indicator (freshwater)	yes
Wheel steering	mechanical
Emergency tiller	yes

## ACCOMMODATION

Cabins	2
Berths	6
Interior	mahogany
Floor	teak and holly
Saloon	yes
Heating	diesel ducted hot air
Heating 2	electric 220V
Navigation center	yes
Chart table	yes
Aft Cabin	yes
Galley	yes
Countertop	corian
Sink	stainless steel 2
Cooker	calor gas Eno
Oven	yes
Gas alarm	yes
Fridge	with freezer compartment
Hot water system	220V + engine
Water pressure system	electrical
Manual and/or foot pump	yes
Crockery	yes
Owners cabin	v-bed
Bed length (m)	2,0



Wardrobe	hanging and drawers
Bathroom	shared
Toilet	shared
Toilet system	manual
Wash basin	in the bathroom
Shower	shared
Guest cabin 1	double bed
Bed length (m)	2,0
Wardrobe	hanging/drawers/shelves
Bathroom	separate
Toilet	separate
Toilet system	manual
Wash basin	in the bathroom
Shower	separate

## MACHINERY

No of engines	1
Make	Volvo Penta
Type	MD 2030
HP	29,00
kW	21,32
Fuel	diesel
Year installed	1994
Maximum speed (kn)	7
Cruising speed (kn)	6
Consumption (l/hr)	3
Engine hours	1217 (1-7-2015)
Engine cooling system	seawater
Drive	shaft
Engine controls	mechanical
Gearbox	mechanical



# SWEDEN YACHTS 370

<b>Bowthruster</b>	electric 75 Kgf
<b>Exhaust</b>	watercooled
<b>Thrust bearing</b>	yes
<b>Propeller type</b>	feathering
<b>Propeller blades</b>	3
<b>Propeller shaft material</b>	stainless steel
<b>Shaft lubrication</b>	grease
<b>Manual bilge pump</b>	yes
<b>Electric bilge pump</b>	yes
<b>Electrical installation</b>	yes
<b>Batteries</b>	yes
<b>Start battery</b>	1x
<b>Service battery</b>	3x
<b>Bowthruster battery</b>	1x
<b>Windlass battery</b>	1x
<b>Battery charger</b>	yes
<b>Inverter</b>	yes
<b>Shorepower</b>	with cable

## NAVIGATION

<b>Compass</b>	White Star
<b>Depth sounder</b>	Autohelm Depth
<b>Log</b>	Autohelm Multi
<b>Windset</b>	Autohelm Wind
<b>Repeater</b>	Autohelm VMG
<b>VHF</b>	Shipmate
<b>Autopilot</b>	Autohelm ST 6000
<b>Rudder angle indicator</b>	Autohelm ST 6000
<b>GPS</b>	2x
<b>Plotter</b>	yes
<b>Navtex</b>	GMDSS FMP20 Marine Decoder



Radio receiver yes

## EQUIPMENT

Fixed windscreen	yes
Sprayhood	yes
Sprayhood with grab rail	yes
Cockpit cover	yes
Winter cover	yes
Cockpit cushions	yes
Cockpit table	yes
Cockpit chairs	yes
Boarding ladder	stainless steel
Deck shower	Hot & Cold
Anchor	Bruce
Anchor chain	yes
Anchor 2	CQR Plough
Outboard support	yes
Sea railing	wire
Pushpit	yes
Pulpit	yes
Lifejackets	yes
Safety harness	yes
Radar reflector	yes
Fenders	yes
Mooring lines	yes
Spare parts	yes
Tools	yes
DVD player	JVC
Cockpit speakers	yes
Speakers in salon	yes
Clock - barometer	yes



Fire extinguisher	yes
Latest extinguisher survey	2014

## RIGGING

Rigging	fractional with backstays
Standing rigging	wire
Brand mast	Seldén
Material mast	aluminium
Spreaders	2 pair
Mainsail	2013 North Sails 31m2
Mainsail cover	yes
Battcars	yes
Fully battened mainsail	yes
Cutterstay	yes
Genoa	2011 Jan Segel 75m2
Genoa II	Cutter, North Sails 44m2
Genoa furler	Furlex
Gennaker	2010 De Vries makkum 85m2
Spinnaker	120m2 With snuffler, hardly used.
Stormjib	Never used
Reefing System	quick-one-line-reefing 3 reefs
Backstay adjuster	hydraulic
Boomvang	gasspring
Secondary sheet winch	2x Lewmar St 40
Genoa sheetwinches	2x Lewmar St 54
Halyard winches	2x Lewmar St 40
Reefing winch	1x Andersen
Multifunctional winches	halyard/sheet winches 2x Lewmar St 40
Spi-pole	aluminium
Gennaker pole	aluminium
Isolated backstay	yes







# SWEDEN YACHTS 370



# SWEDEN YACHTS 370



# SWEDEN YACHTS 370



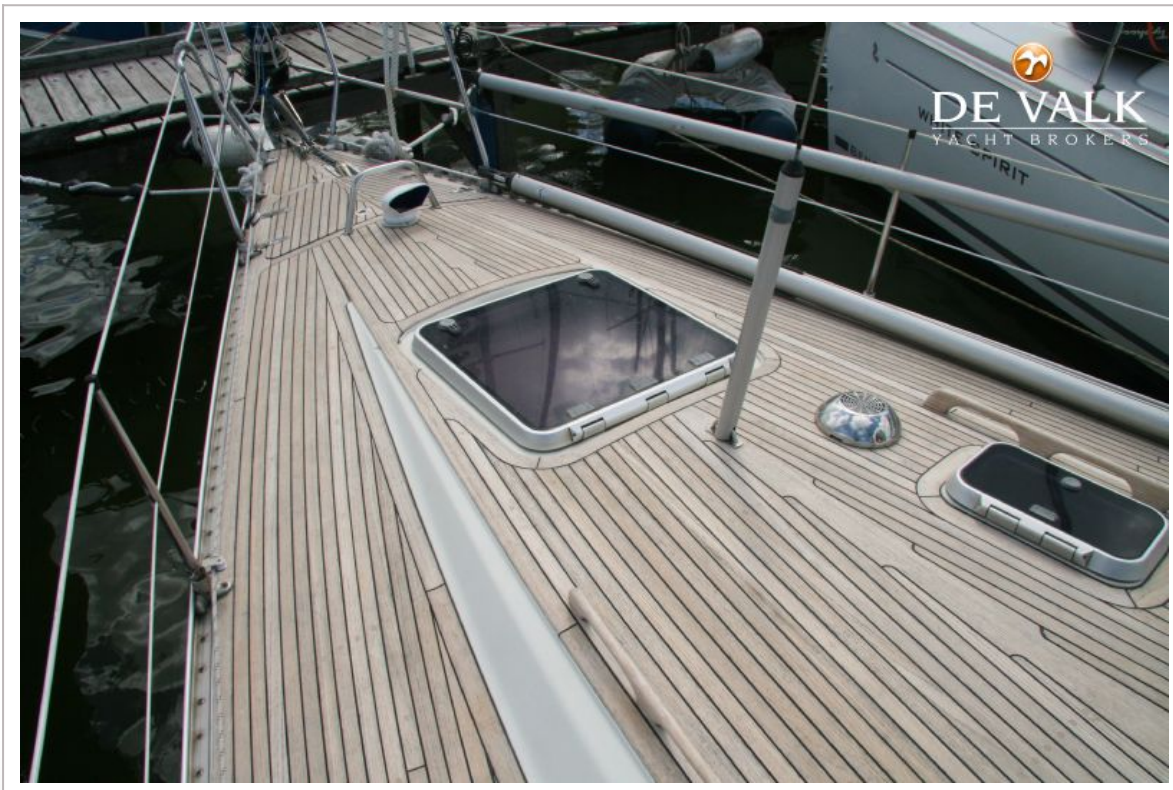
# SWEDEN YACHTS 370



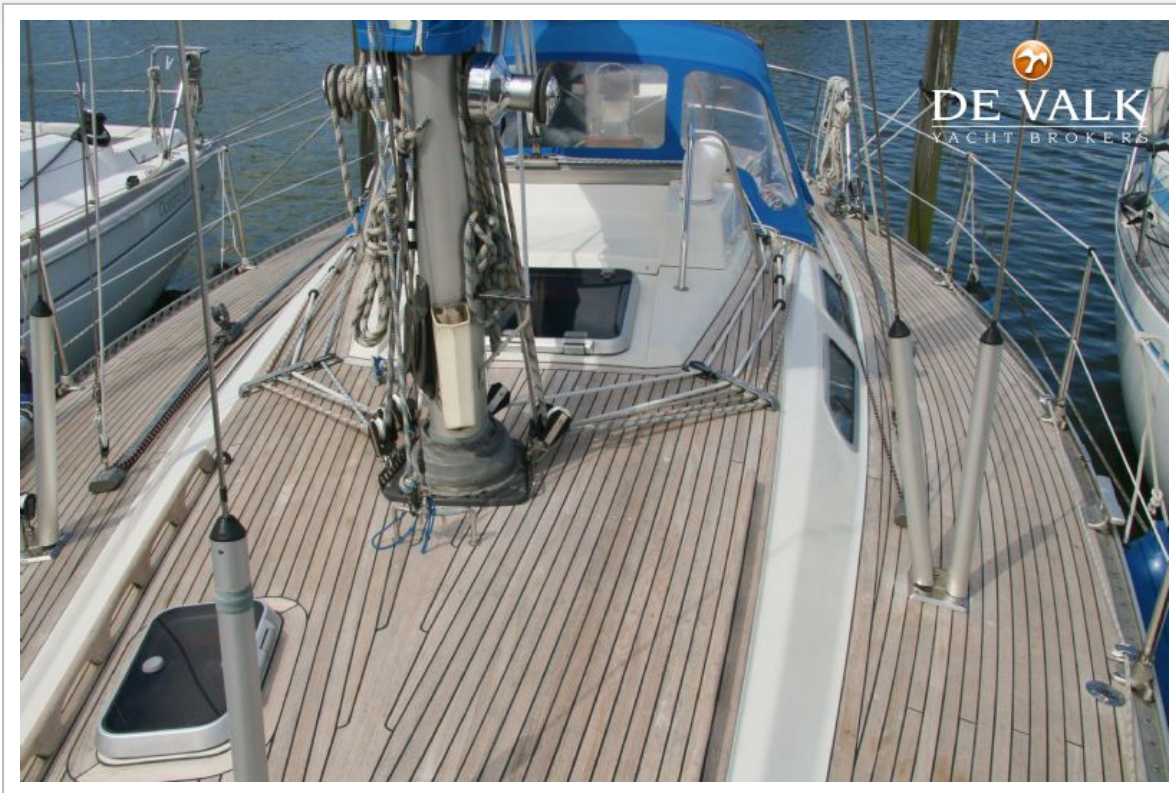
# SWEDEN YACHTS 370



# SWEDEN YACHTS 370



# SWEDEN YACHTS 370

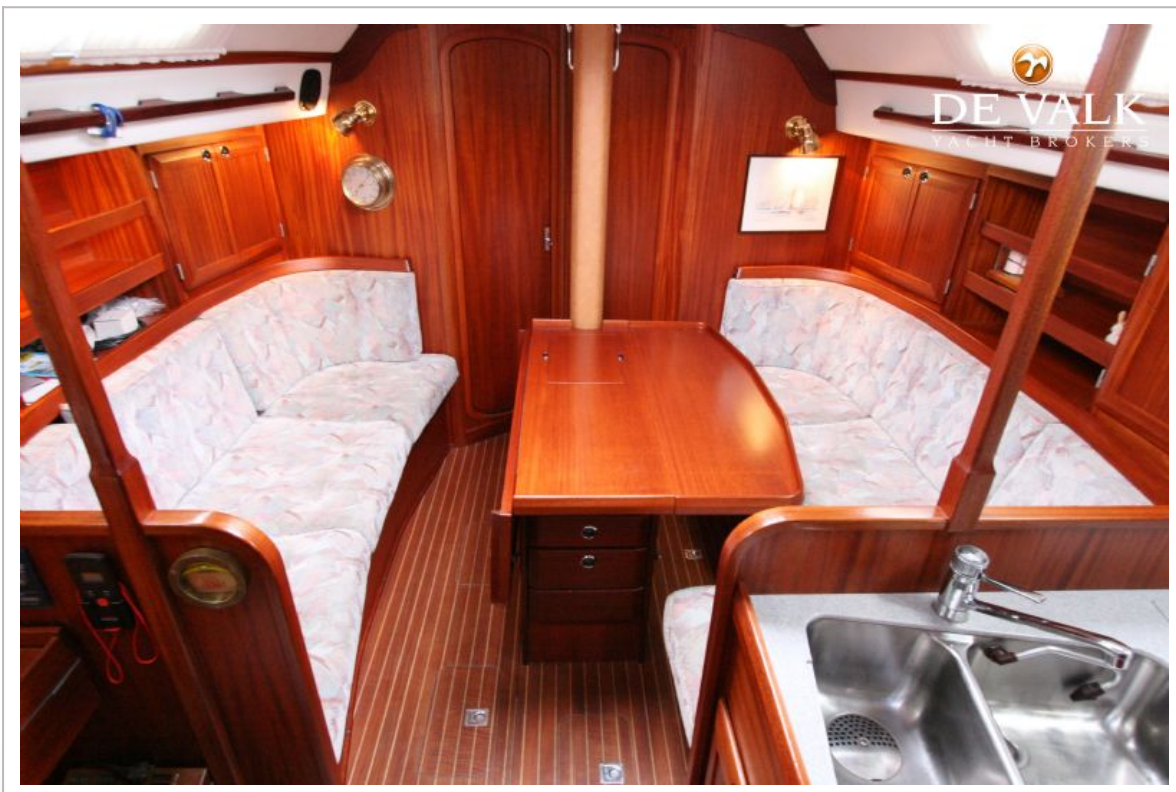




# SWEDEN YACHTS 370



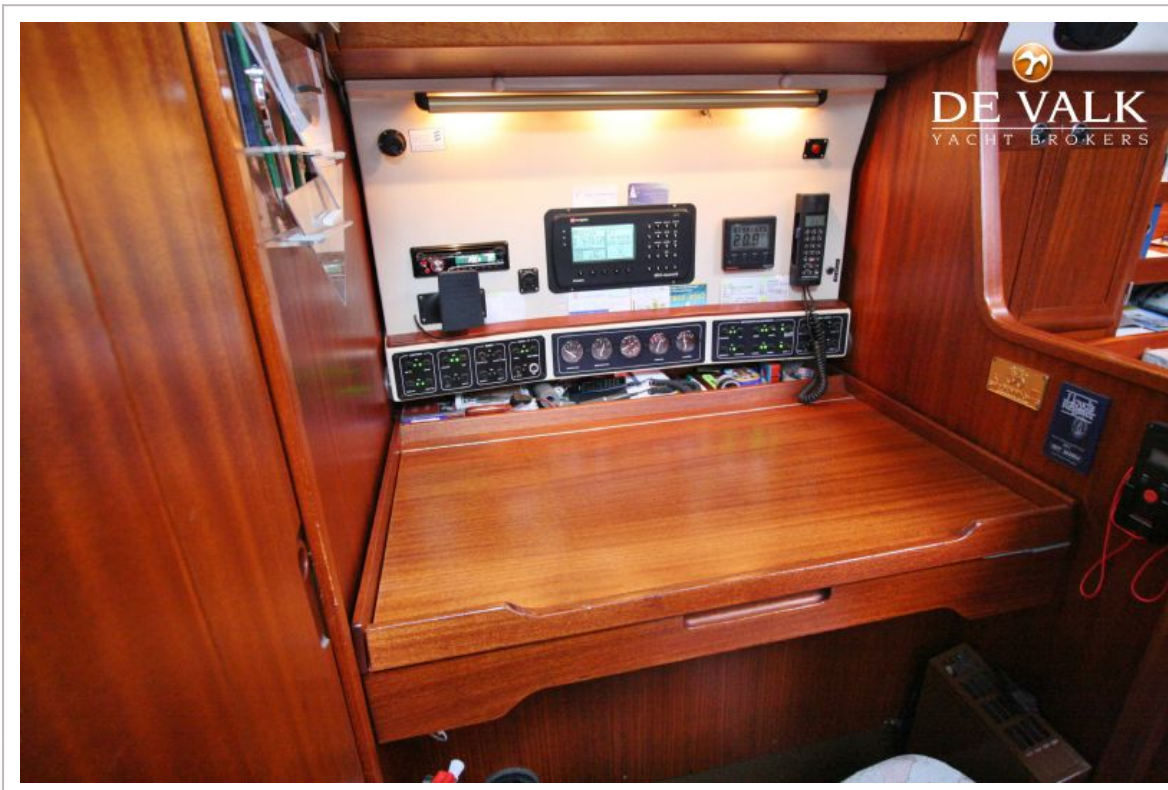
# SWEDEN YACHTS 370



# SWEDEN YACHTS 370



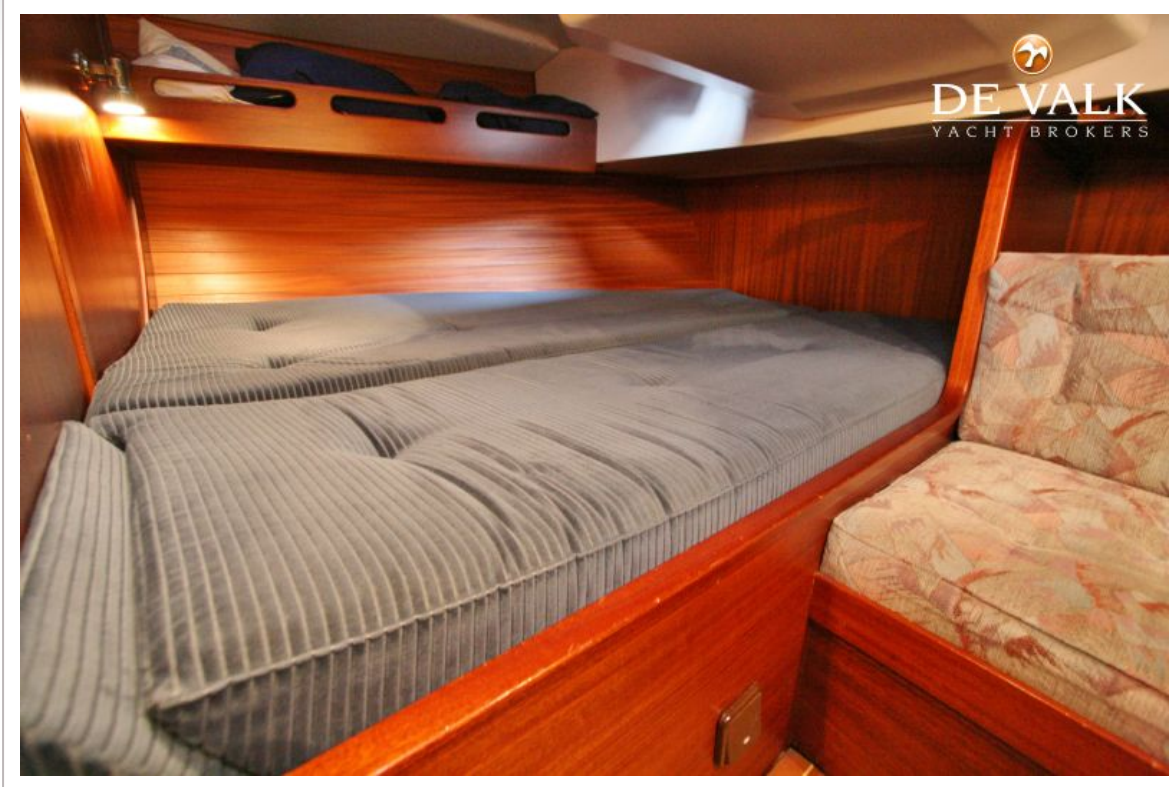
# SWEDEN YACHTS 370



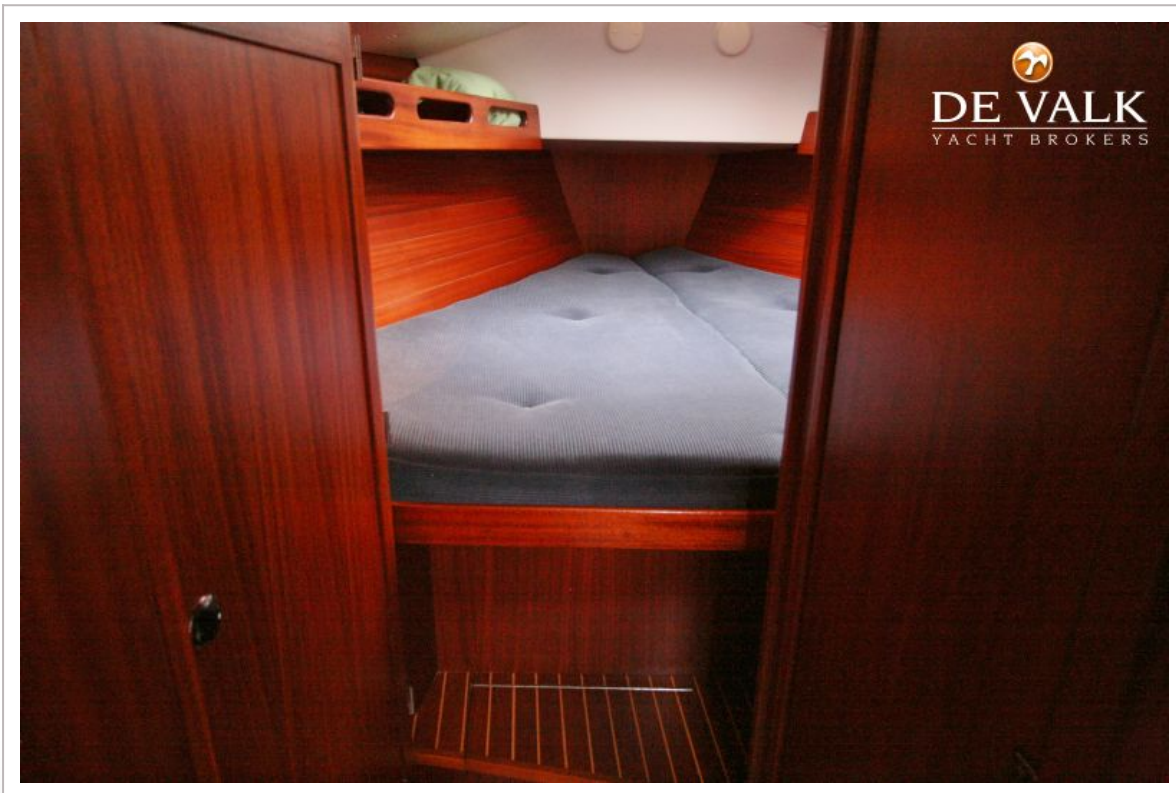
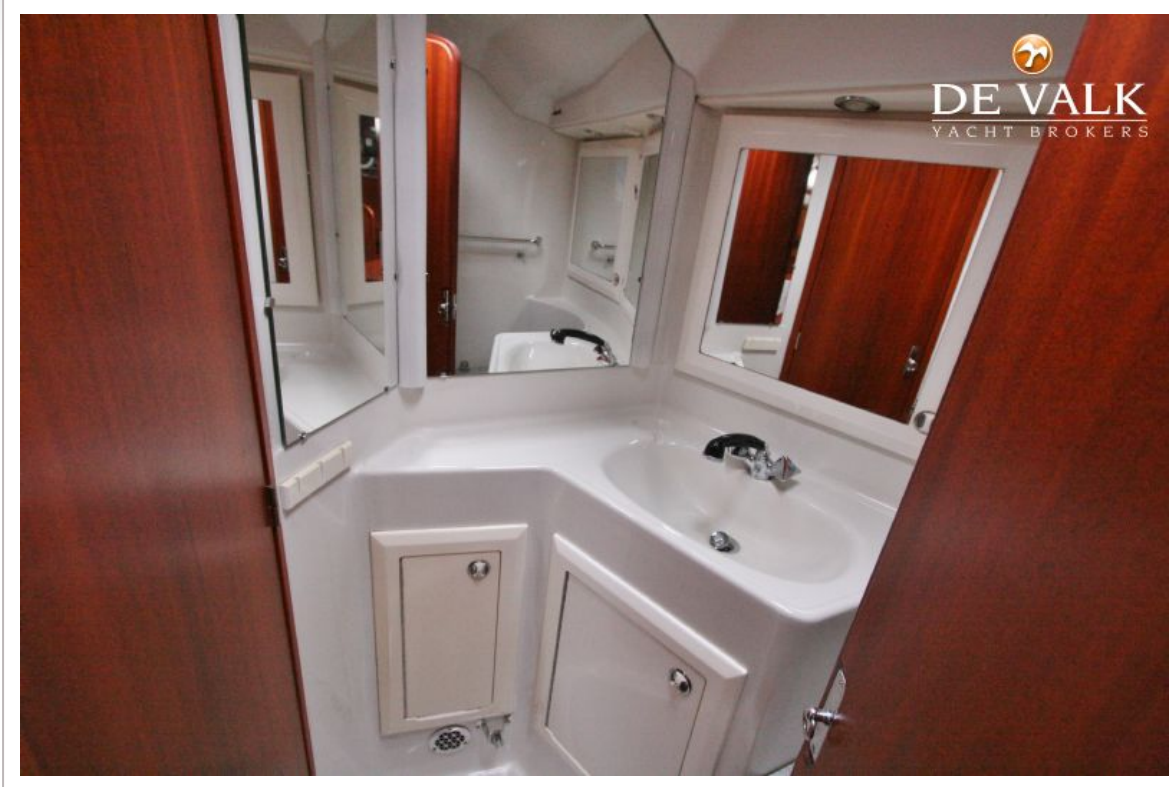
# SWEDEN YACHTS 370



# SWEDEN YACHTS 370



# SWEDEN YACHTS 370



# SWEDEN YACHTS 370





# SWEDEN YACHTS 370

