



DE VALK  
YACHT BROKERS



## BAVARIA 38 OCEAN



DE VALK  
YACHT BROKERS

# BAVARIA 38 OCEAN

## BROKER'S COMMENTS

This Bavaria 38 Ocean is well maintained and equipped with a bow thruster, electric anchor winch, Webasto heating and a Volvo Penta 50HP diesel engine. Below decks 'Jim Beam' has a good headroom, ample stowage space, excellent owners cabin because of the 'center cockpit' design, and a large wet room and galley. She is in the sales marine of De Valk Monnickendam.

*Reinier van der Wolf*

## SPECIFICATIONS

<b>Dimensions</b>	11.85 x 3.95 x 1.90 (m)	<b>Builder</b>	Bavaria Yachtbau GbmH, Giebelstadt
<b>Built</b>	1998	<b>Cabins</b>	2
<b>Material</b>	GRP	<b>Berths</b>	6
<b>Engine(s)</b>	1 x Volvo Penta MD22L diesel	<b>Hp/Kw</b>	50.00 (hp), 36.75 (kw)
<b>Asking price</b>	sold (VAT )	<b>Lying</b>	at sales office

## CONTACT

<b>Sales office</b>	De Valk Monnickendam	<b>Telephone</b>	+31 299 65 63 50
<b>Address</b>	Hoogedijk 6 1145 PM Katwoude The Netherlands	<b>E-mail</b>	monnickendam@devalk.nl

## DISCLAIMER

These particulars are given in good faith as supplied but cannot be guaranteed.



# BAVARIA 38 OCEAN

## GENERAL

<b>Model</b>	BAVARIA 38 OCEAN
<b>Type</b>	sailing yacht
<b>LOA (m)</b>	11,85
<b>LWL (m)</b>	9,85
<b>Beam (m)</b>	3,95
<b>Draft (m)</b>	1,90
<b>Air draft (m)</b>	17,50
<b>Headroom (m)</b>	1,95
<b>Year built</b>	1998
<b>Builder</b>	Bavaria Yachtbau GbmH, Giebelstadt
<b>Country</b>	Germany
<b>Designer</b>	J&J Design
<b>Displacement (t)</b>	7,5
<b>Ballast (tonnes)</b>	lead 2,9
<b>CE norm</b>	A
<b>Hull material</b>	GRP
<b>Hull colour</b>	white
<b>Hull shape</b>	round-bilged
<b>Keel type</b>	fin keel
<b>Superstructure material</b>	GRP
<b>Rubbing strake</b>	wood
<b>Deck material</b>	GRP
<b>Deck finish</b>	non-skid moulded in 2013
<b>Superstructure deck finish</b>	non-skid moulded in
<b>Cockpit deck finish</b>	teak
<b>Dorades</b>	2x
<b>Window frame</b>	aluminium Gebo
<b>Window material</b>	polycarbonate
<b>Deckhatch</b>	4x Gebo
<b>Fuel tank (litre)</b>	stainless steel 160 L.



<b>Freshwater tank (litre)</b>	polyethylene 2x 210 L.
<b>Level indicator (freshwater)</b>	Bavaria Yachts Display
<b>Blackwater tank (litre)</b>	yes
<b>Blackwater tank extraction</b>	deck extraction + pump
<b>Wheel steering</b>	cable steering
<b>Emergency tiller</b>	yes

## ACCOMMODATION

<b>Cabins</b>	2
<b>Berths</b>	6
<b>Interior</b>	mahogany
<b>Floor</b>	teak and holly
<b>Open cockpit</b>	yes
<b>Saloon</b>	yes
<b>Headroom saloon (m)</b>	1.95
<b>Heating</b>	diesel ducted hot air Webasto (needs to be cleaned)
<b>Chart table</b>	yes
<b>Aft Cabin</b>	yes
<b>Dinette</b>	yes
<b>Galley</b>	yes
<b>Countertop</b>	plastic
<b>Sink</b>	stainless steel 2x
<b>Cooker</b>	calor gas 2-burner
<b>Oven</b>	yes
<b>Fridge</b>	yes
<b>Hot water system</b>	220V + engine 20 L. boiler
<b>Water pressure system</b>	electrical
<b>Owners cabin</b>	double bed
<b>Bed length (m)</b>	2,00 x 1,60
<b>Wardrobe</b>	hanging and shelves
<b>Bathroom</b>	shared



Toilet	shared Jabsco
Toilet system	manual
Wash basin	at the toilet
Shower	shared
Guest cabin 1	double bed
Bed length (m)	1,95

## MACHINERY

No of engines	1
Make	Volvo Penta
Type	MD22L
HP	50,00
kW	36,75
Fuel	diesel
Year installed	1998
Maximum speed (kn)	7,5
Cruising speed (kn)	6,8
Consumption (l/hr)	2/3
Engine hours	2750
Engine cooling system	freshwater heat exchanger
Drive	sail-drive
Saildrive seal	2016
Engine controls	bowden cable
Gearbox	mechanical Revised in 2014
Bowthruster	electric MaxPower
Exhaust	watercooled
Propeller type	folding
Propeller blades	3
Electric bilge pump	yes
Electrical installation	12V/220V
Batteries	yes



Start battery	1x 50Ah (2007)
Service battery	2x 140Ah (2016)
Battery charger	yes
Inverter	12V/24V/600W.
Shorepower	with cable

## NAVIGATION

Compass	Suunto
Depth sounder	Autohelm
Log	Autohelm
Windset	Autohelm
VHF	Shipmate RS8300
Autopilot	Autohelm ST6000+
Navtex	Furuno Navte NX-300
Navigation lights	yes

## EQUIPMENT

Sprayhood	2010
Cockpit cover	2007
Bimini	yes
Window cover	Mosquito screens
Bathing platform	yes
Boarding ladder	stainless steel
Deck shower	yes
Anchor	yes
Anchor chain	yes
Windlass	electrical Simpson-Lawrence
Sea railing	wire
Grab rail (superstructure)	stainless steel
Railing side opening gates	yes
Pushpit	yes



<b>Pulpit</b>	yes
<b>Life raft</b>	container Marin Assist
<b>Life raft (pers)</b>	container 4
<b>Last life raft survey</b>	Needs to be checked
<b>Fenders</b>	yes
<b>Mooring lines</b>	yes
<b>Spare parts</b>	yes
<b>TV</b>	yes
<b>Radio-cd player</b>	yes
<b>Speakers in salon</b>	yes
<b>Clock - barometer</b>	yes
<b>Fire extinguisher</b>	yes

## RIGGING

<b>Rigging</b>	sloop 7/8
<b>Standing rigging</b>	wire
<b>Brand mast</b>	Seldén
<b>Material mast</b>	aluminium
<b>Spreaders</b>	2x
<b>Mainsail</b>	Dacron
<b>Stoway mast</b>	Selden
<b>Genoa</b>	Equipped with a new UV Strip in 2016
<b>Genoa furler</b>	Furlex 300S
<b>Booster</b>	Never used
<b>Reefing System</b>	main in-mast furling
<b>Backstay adjuster</b>	mechanical
<b>Boomvang</b>	gasspring Selden
<b>Primary sheet winch</b>	2x Harken 40 two speed
<b>Secondary sheet winch</b>	2x Harken 44 two speed
<b>Halyard winches</b>	1x Antal 40
<b>Spi-pole</b>	aluminium







# BAVARIA 38 OCEAN



# BAVARIA 38 OCEAN



# BAVARIA 38 OCEAN



# BAVARIA 38 OCEAN



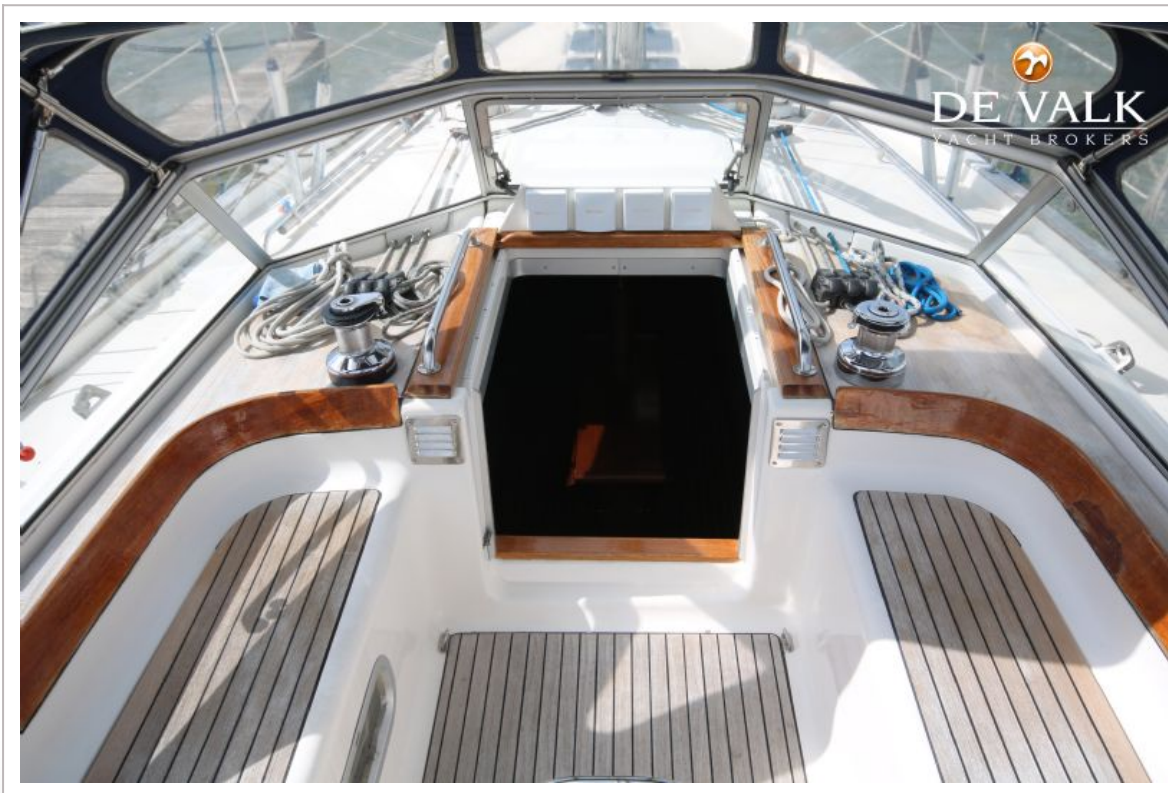
# BAVARIA 38 OCEAN



# BAVARIA 38 OCEAN



# BAVARIA 38 OCEAN



# BAVARIA 38 OCEAN





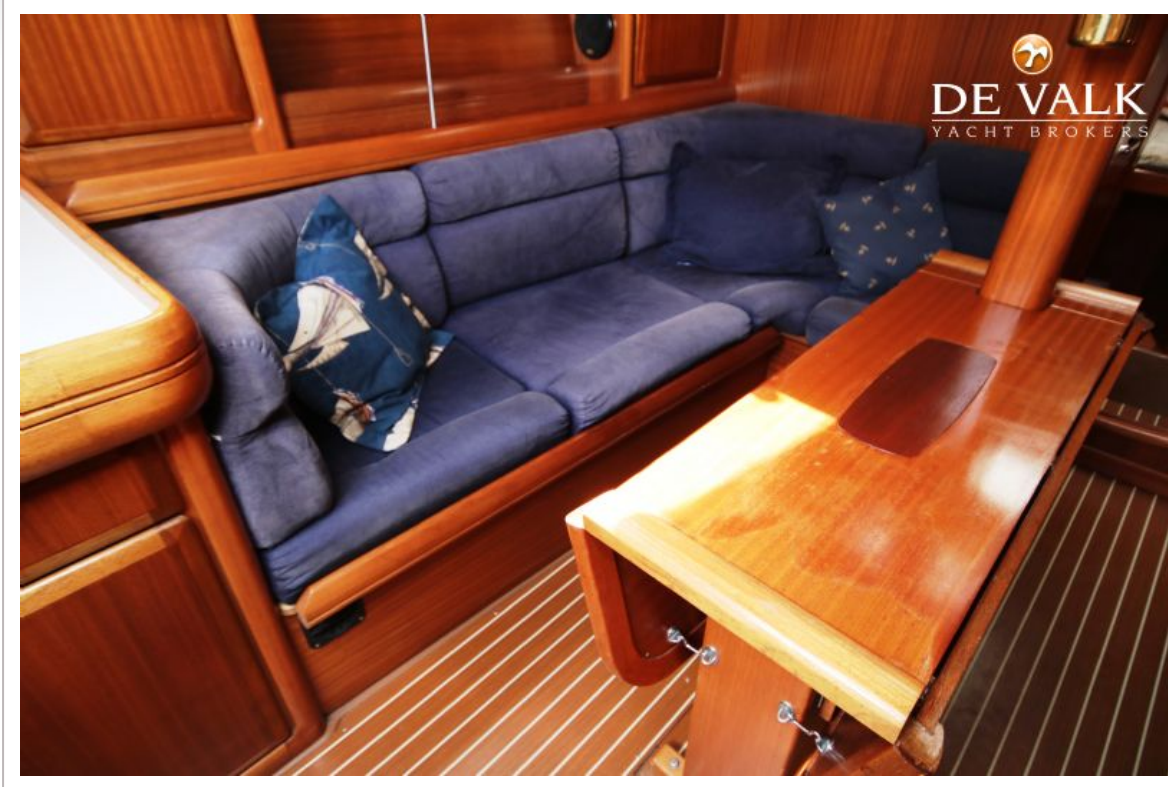
# BAVARIA 38 OCEAN



# BAVARIA 38 OCEAN



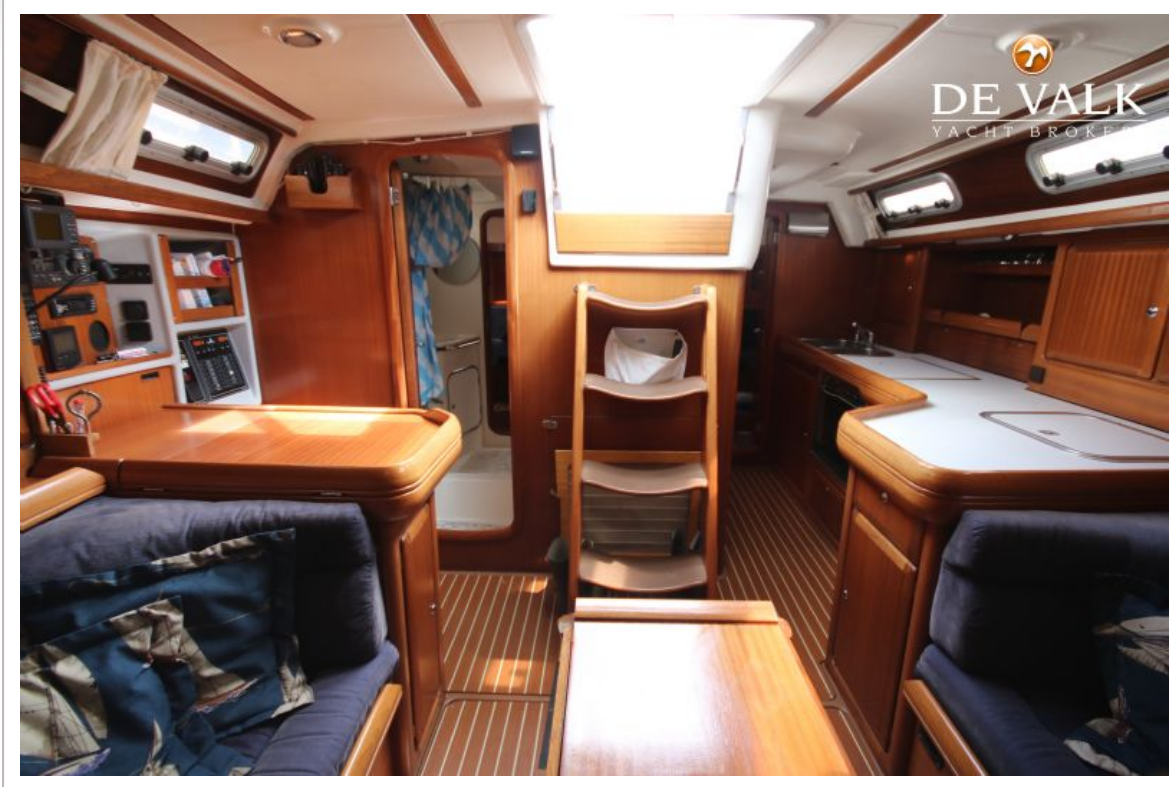
# BAVARIA 38 OCEAN



# BAVARIA 38 OCEAN



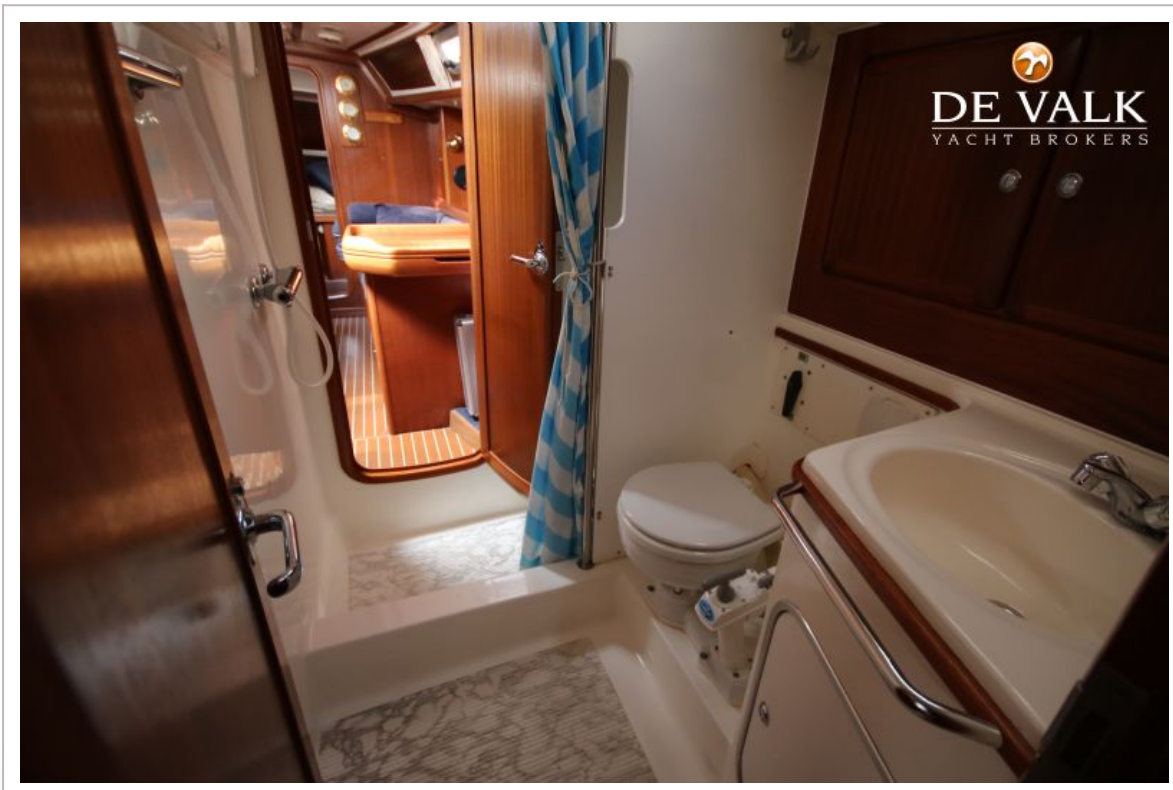
# BAVARIA 38 OCEAN



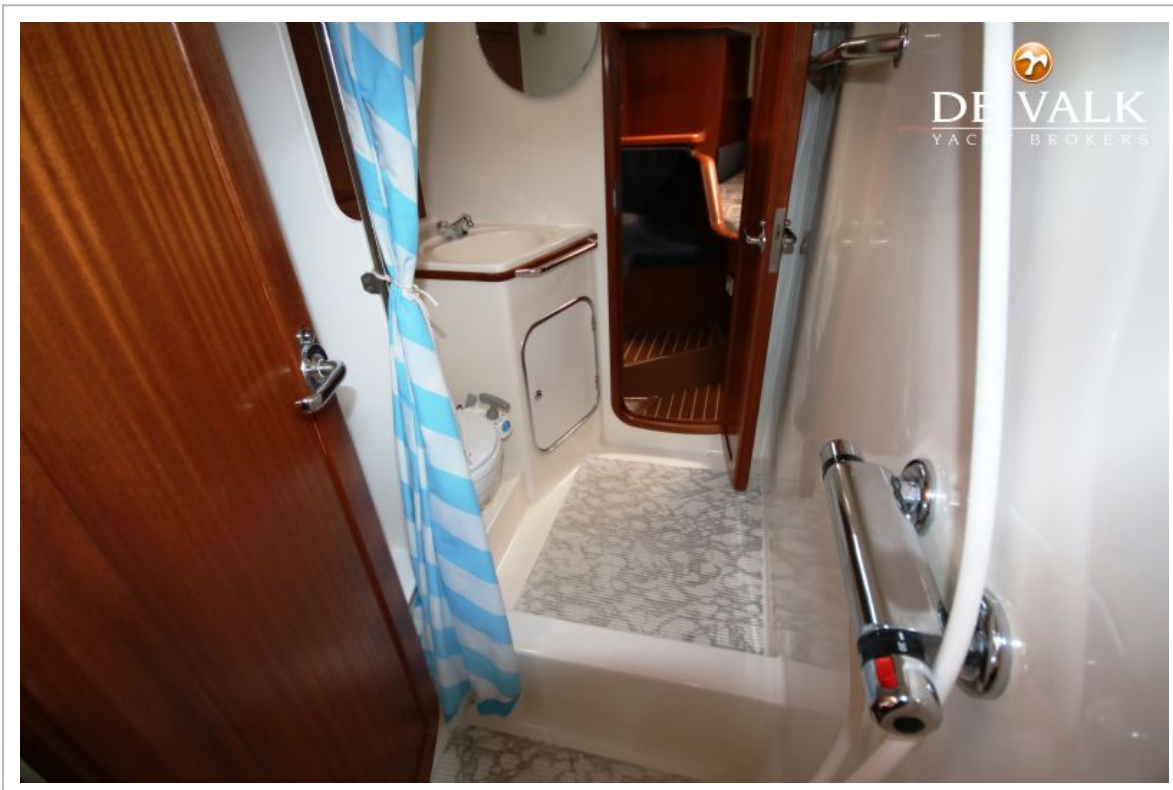
# BAVARIA 38 OCEAN



# BAVARIA 38 OCEAN



# BAVARIA 38 OCEAN

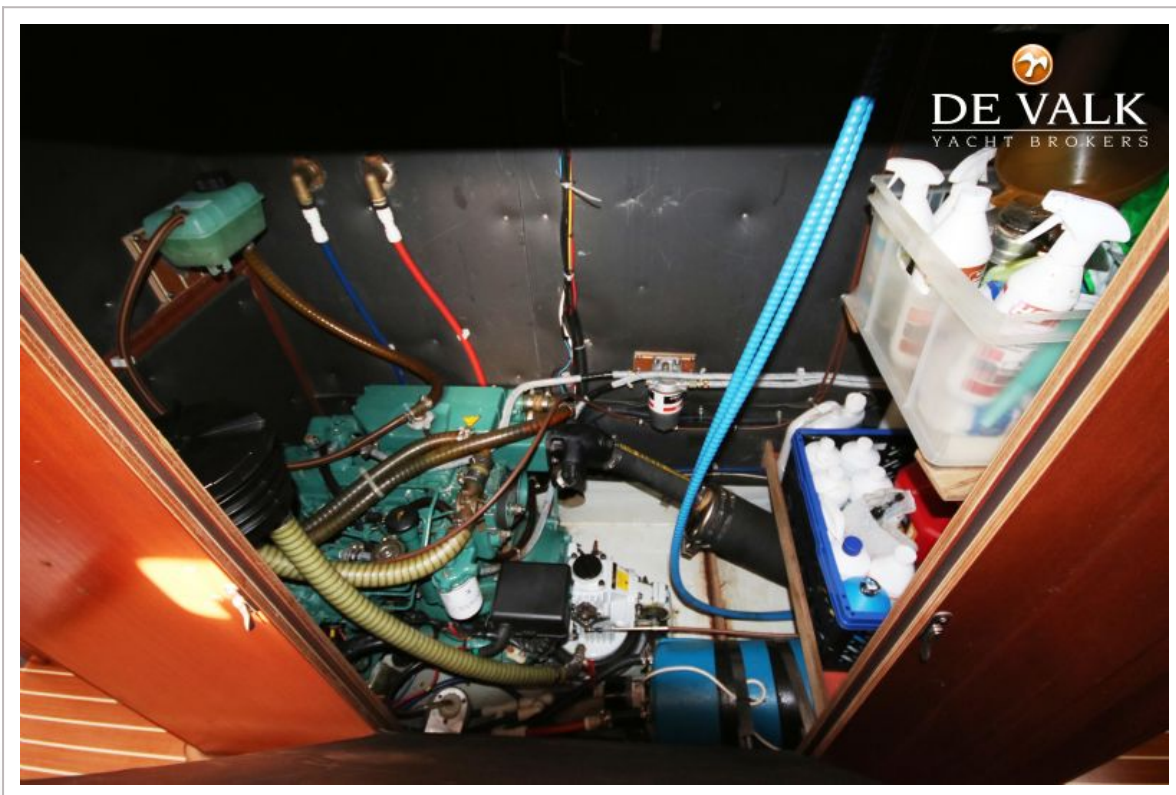




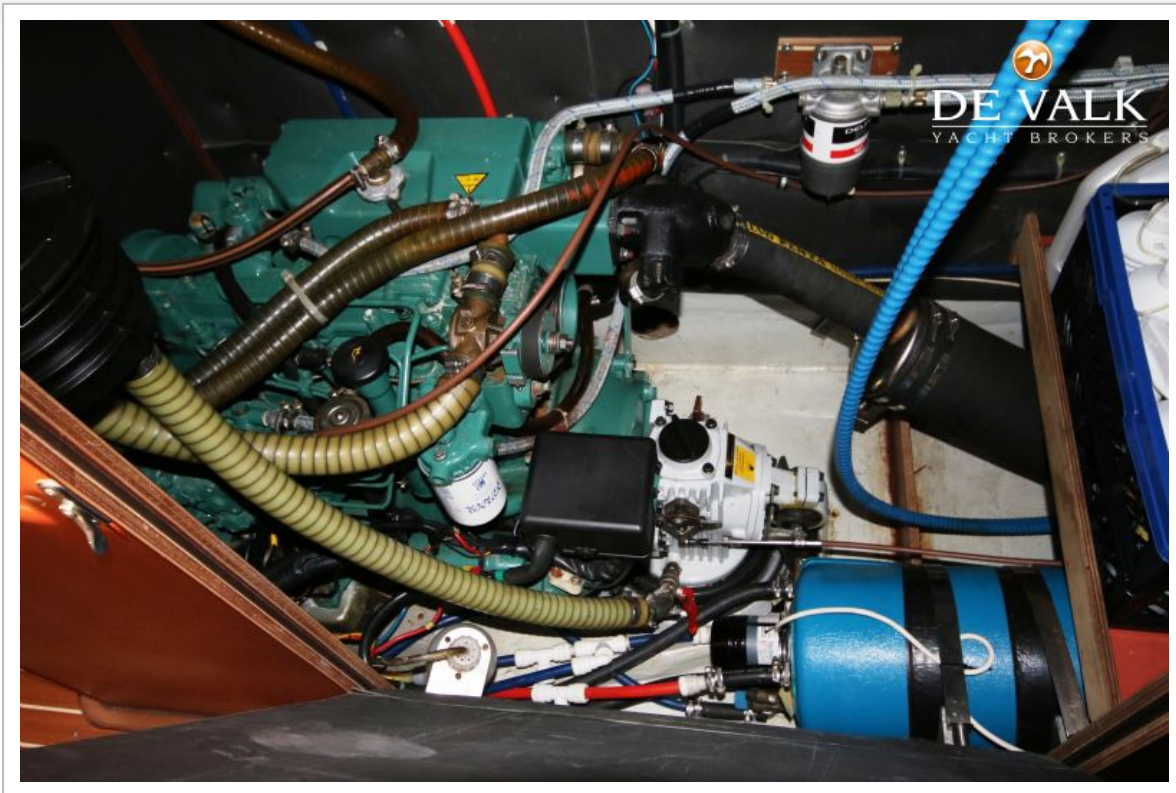
# BAVARIA 38 OCEAN



# BAVARIA 38 OCEAN



# BAVARIA 38 OCEAN



# BAVARIA 38 OCEAN

