



DE VALK
YACHT BROKERS



DUFOUR 40 PERFORMANCE



DE VALK
YACHT BROKERS

DUFOUR 40 PERFORMANCE

BROKER'S COMMENTS

Nicely maintained Dufour 40 Performance from 2006. This ship is completely equipped and ready to sail with a new owner. Elegant in the way the bow splits the water surface, her refined hull lines, the wide beam especially in the aft sections, a subtle mixture of elements to meet the standards of blue water sailing with only a small crew on board. This Dufour 40 Performance is equipped with a heating system, chart plotter, Volvo Penta (D2-40), electric anchor windlass and many more. Lying in Hindeloopen.

Johan Schootstra

SPECIFICATIONS

Dimensions	12.35 x 3.90 x 2.10 (m)	Builder	Dufour Yachts
Built	2006	Cabins	2
Material	GRP	Berths	6
Engine(s)	1 x Volvo Penta D2-40 diesel	Hp/Kw	40.00 (hp), 29.40 (kw)
Asking price	sold (VAT)	Lying	at sales office

CONTACT

Sales office	De Valk Hindeloopen	Telephone	+31 514 52 40 00
Address	Oosterstrand 1 8713 JS Hindeloopen The Netherlands	E-mail	hindeloopen@devalk.nl

DISCLAIMER

These particulars are given in good faith as supplied but cannot be guaranteed.



DUFOUR 40 PERFORMANCE

GENERAL

Model	DUFOUR 40 PERFORMANCE
Type	sailing yacht
LOA (m)	12,35
LWL (m)	10,76
Beam (m)	3,90
Draft (m)	2,10
Air draft (m)	18,50
Headroom (m)	1,99
Year built	2006
Builder	Dufour Yachts
Country	France
Designer	Umberto Felci / Patrick Roséo
Displacement (t)	7,9
Ballast (tonnes)	lead 2,815
CE norm	A
Hull material	GRP
Hull colour	white
Hull shape	round-bilged
Keel type	fin keel
Superstructure material	GRP
Deck material	GRP
Deck finish	non-skid moulded in
Superstructure deck finish	non-skid moulded in
Cockpit deck finish	teak
Antifouling (year)	2016
Window frame	aluminium
Window material	perspex
Deckhatch	7x Lewmar
Portholes	yes
Fuel tank (litre)	stainless steel 160



DUFOUR 40 PERFORMANCE

Level indicator (fuel tank)	yes
Freshwater tank (litre)	polyethylene 330
Blackwater tank (litre)	yes
Wheel steering	cable steering With new cover 2016
Emergency tiller	yes

ACCOMMODATION

Cabins	2
Berths	6
Interior	Moabi
Floor	teak and holly
Open cockpit	yes
Saloon	yes
Headroom saloon (m)	1,99
Heating	diesel ducted hot air Webasto
Chart table	yes
Aft Cabin	1x
Galley	yes
Countertop	corian
Sink	stainless steel Double
Cooker	calor gas 2 burner
Oven	In cooker
Fridge	yes
Hot water system	220V + engine
Water pressure system	electrical
Owners cabin	double bed
Wardrobe	hanging/drawers/shelves
Guest cabin 1	double bed
Wardrobe	hanging and shelves
Bathroom	shared
Toilet	Jabsco



DUFOUR 40 PERFORMANCE

Toilet system	manual
Wash basin	yes
Shower	separate

MACHINERY

No of engines	1
Make	Volvo Penta
Type	D2-40
HP	40,00
kW	29,40
Fuel	diesel
Year installed	2006
Maximum speed (kn)	7,5
Cruising speed (kn)	6
Engine cooling system	freshwater heat exchanger
Drive	sail-drive
Engine controls	bowden cable
Exhaust	watercooled
Propeller type	folding
Propeller blades	3 - Volvo Penta
Manual bilge pump	yes
Electric bilge pump	yes
Electrical installation	12 / 220 volt
Start battery	1x 102Amp
Service battery	2x 102Amp
Battery charger	Cristic 12V-25A
Shorepower	with cable

NAVIGATION

Compass	yes
Depth sounder	Raymarine ST60 TRIDATA



DUFOUR 40 PERFORMANCE

Windset	Raymarine ST60 WIND
VHF	Shipmate
VHF handheld	ICOM IC-M91D
GPS	Clipper GPS and furuno GP-32
Plotter/GPS	Lowrance HDS9m
Navtex	Furumo NX-300
Personal computer	Laptop
Electronic chart(s)	yes
AIS receiver	OceanSat Class B
Extra info	The navigation equipment is connected to a MiniPlex -2Wi (WiFi NMEA multiplexer)

EQUIPMENT

Sprayhood	2016
Cockpit table	yes
Bathing platform	yes
Boarding ladder	stainless steel
Anchor	Pool 18kg
Anchor chain	yes
Anchor 2	Danforth With lead-line
Windlass	electrical Quick
Sea railing	wire Stainless steel
Grab rail (superstructure)	teak
Pushpit	yes
Pulpit	yes
Life raft	container Plastimo Cruiser 4
Life raft (pers)	4
Lifebuoy	yes
Danbuoy	yes
Fenders	yes
Mooring lines	yes



DUFOUR 40 PERFORMANCE

TV	LG
TV receiver	Digitenne
Radio-cd player	VDO
Clock - barometer	Digital
Fire extinguisher	yes

RIGGING

Rigging	sloop
Standing rigging	wire
Brand mast	Sparcraft
Material mast	aluminium
Spreaders	2 pair
Mainsail	North Sails - Soft norlam - 2012 - good condition
Mainsail cover	2015
Battcars	Where the battens are
Fully battened mainsail	yes
High aspect	North Sails - Soft norlam - 2010 - good condition
Genoa furler	Facnor RS260
Genoa cover	2016
Gennaker	Northsails + Snuffer retrieving system - 2012 - good condition
Reefing System	slabreefing
Backstay adjuster	mechanical
Boomvang	gasspring
Genoa sheetwinches	2x Harken 2 speed power ratio 48
Halyard winches	2x Harken 2 speed power ratio 40
Winchcovers	yes
Spi-pole	aluminium



DUFOUR 40 PERFORMANCE



DUFOUR 40 PERFORMANCE



DUFOUR 40 PERFORMANCE



DUFOUR 40 PERFORMANCE



DUFOUR 40 PERFORMANCE



DUFOUR 40 PERFORMANCE



DUFOUR 40 PERFORMANCE



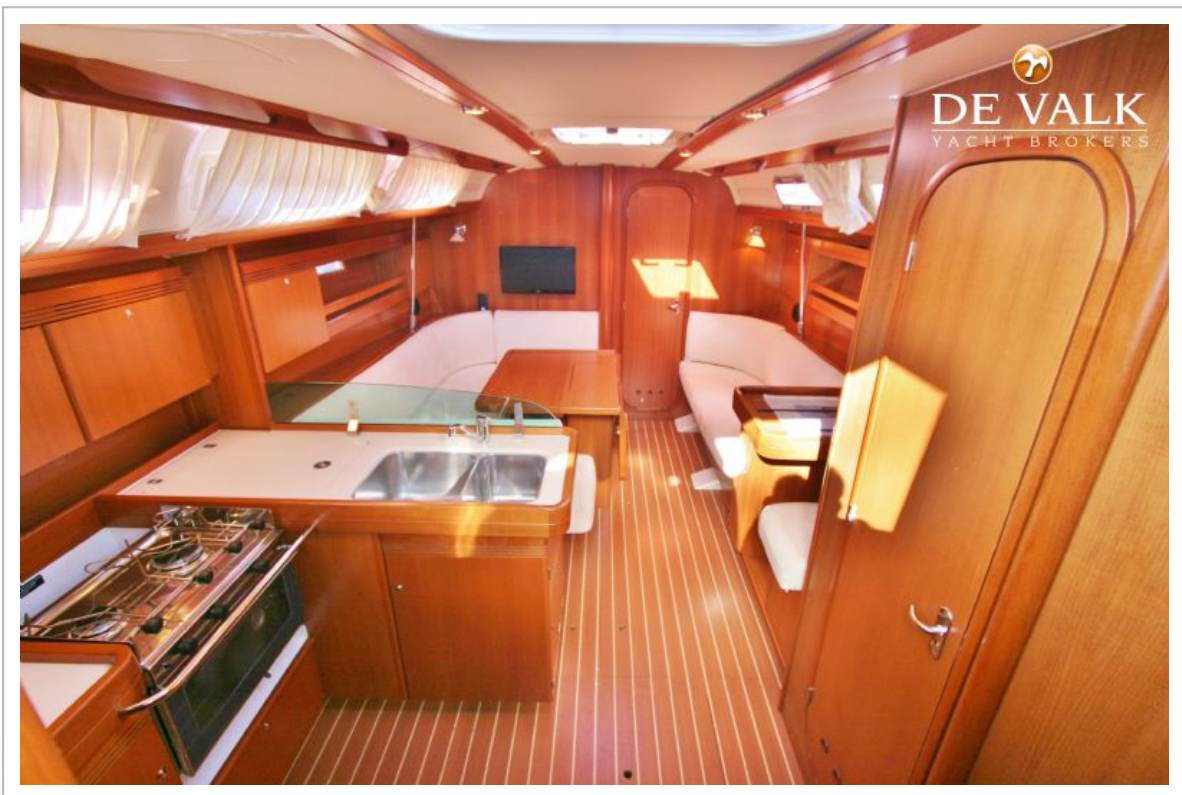
DUFOUR 40 PERFORMANCE



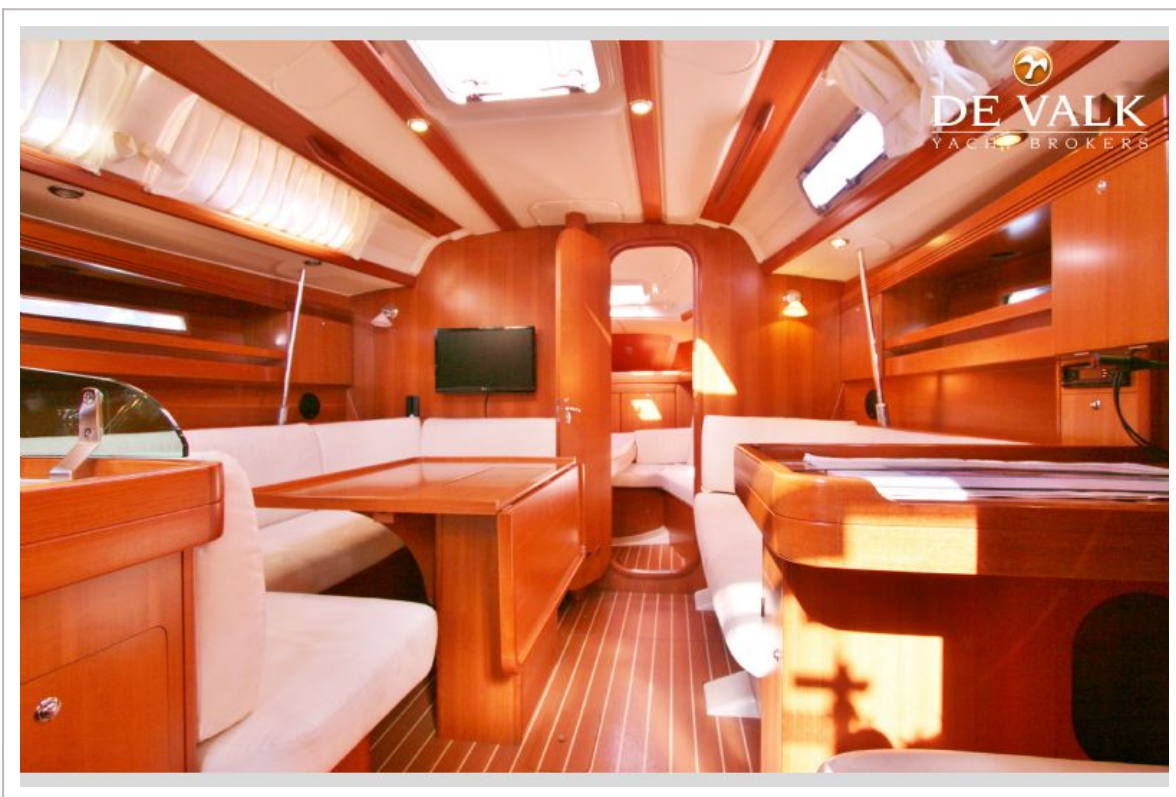
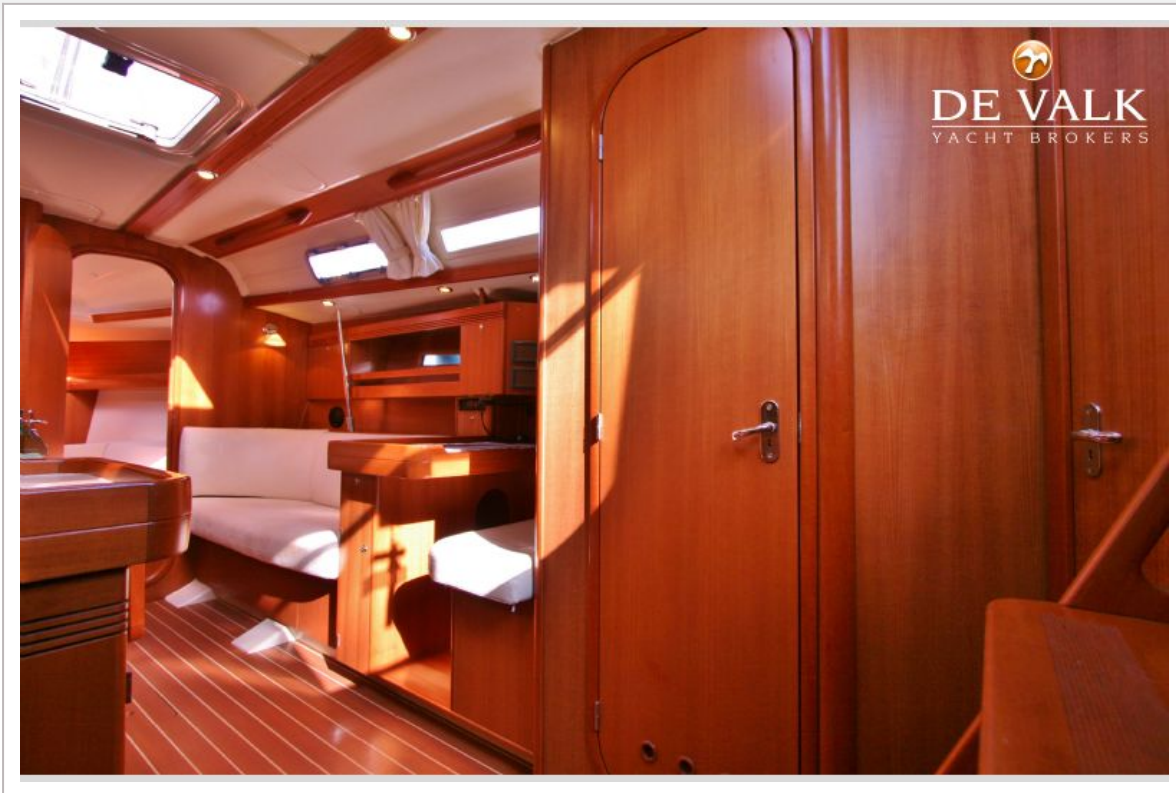
DUFOUR 40 PERFORMANCE



DUFOUR 40 PERFORMANCE



DUFOUR 40 PERFORMANCE



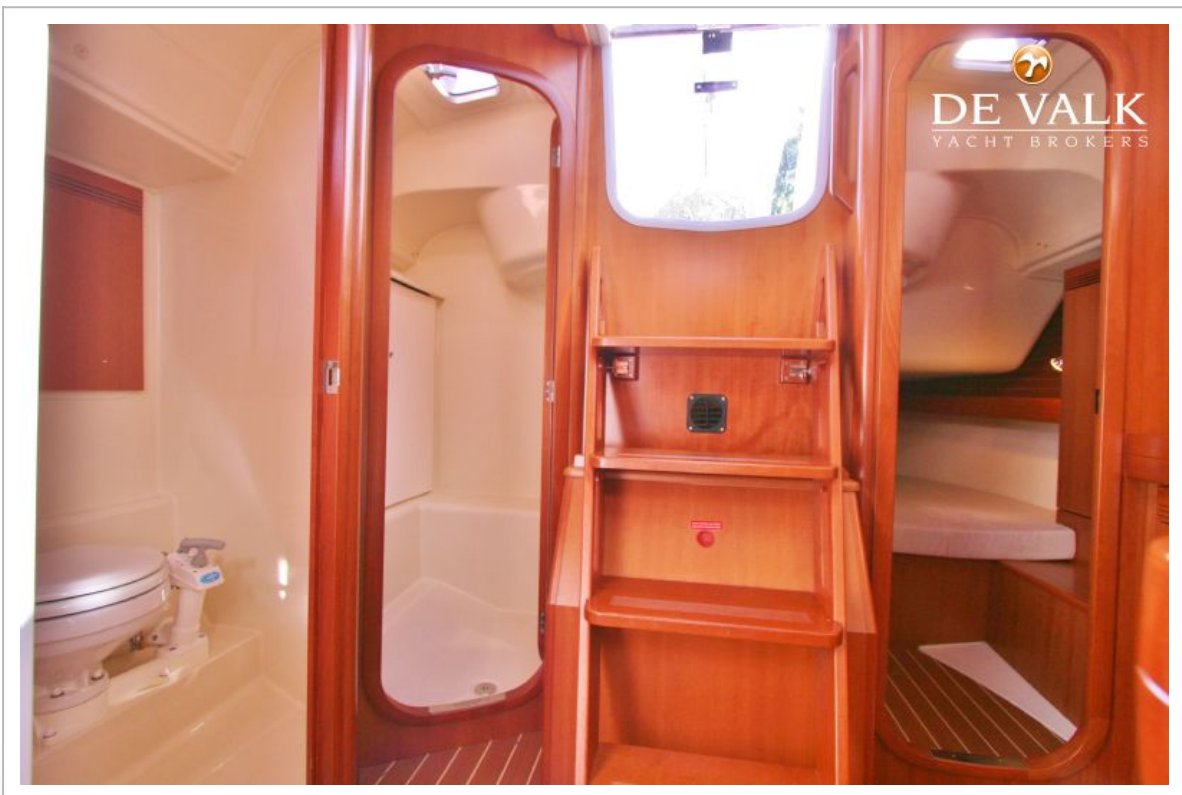
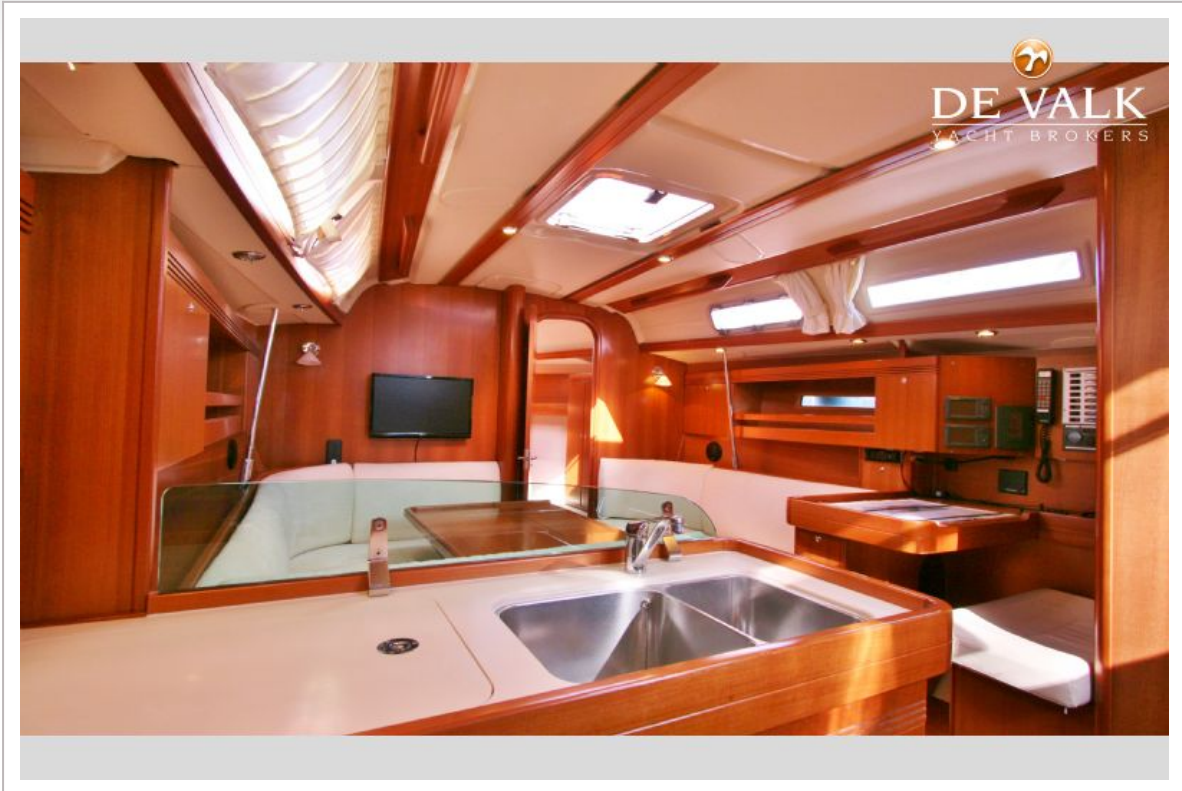
DUFOUR 40 PERFORMANCE



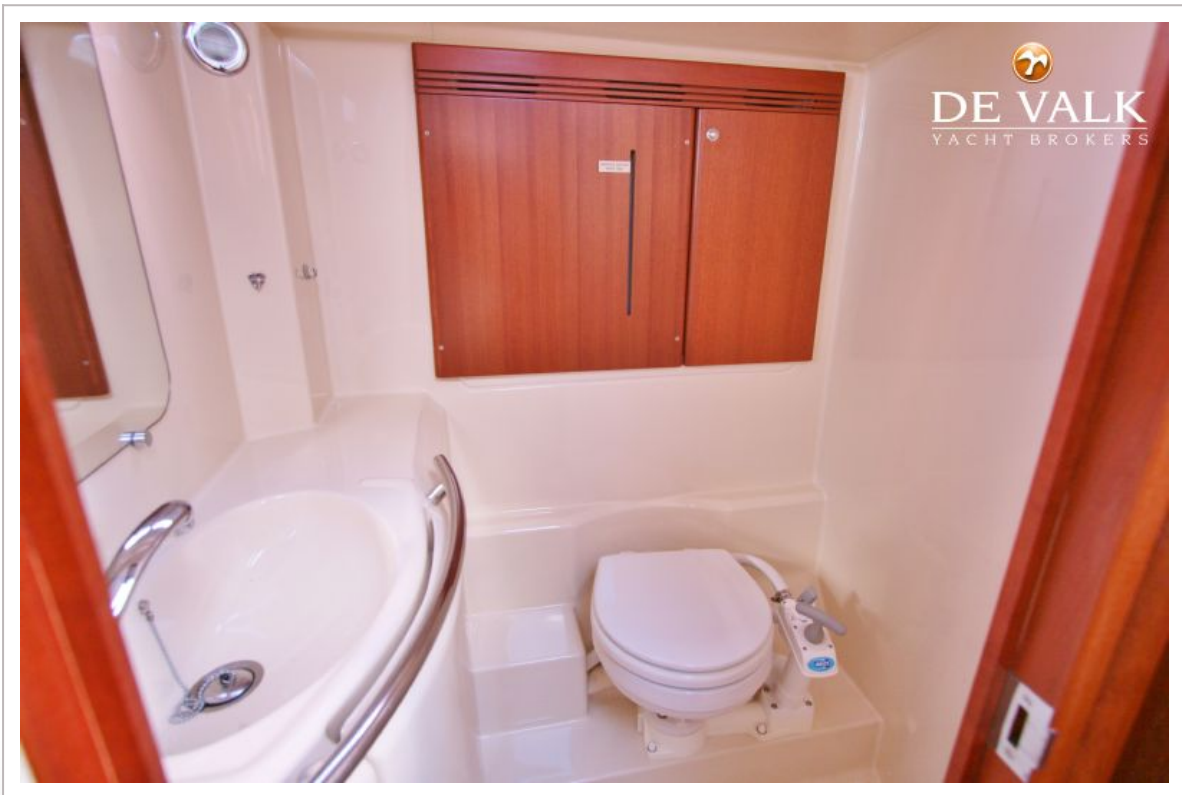
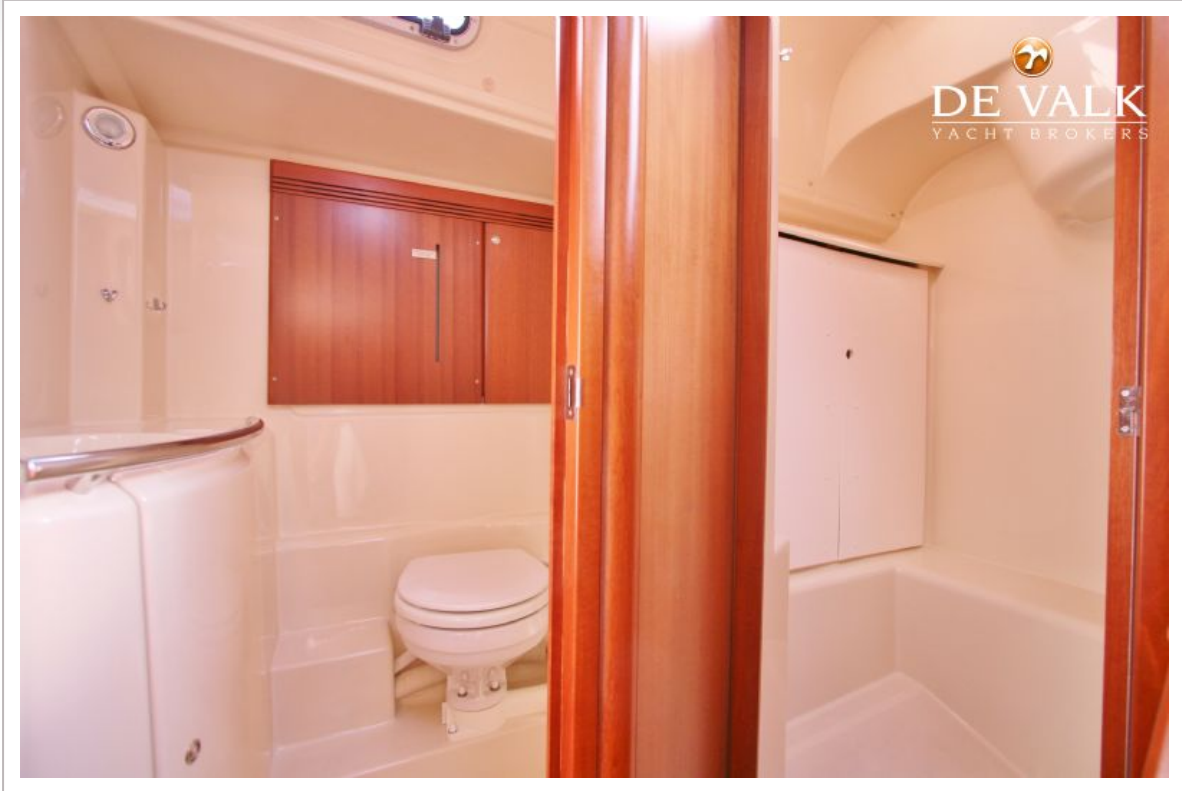
DUFOUR 40 PERFORMANCE



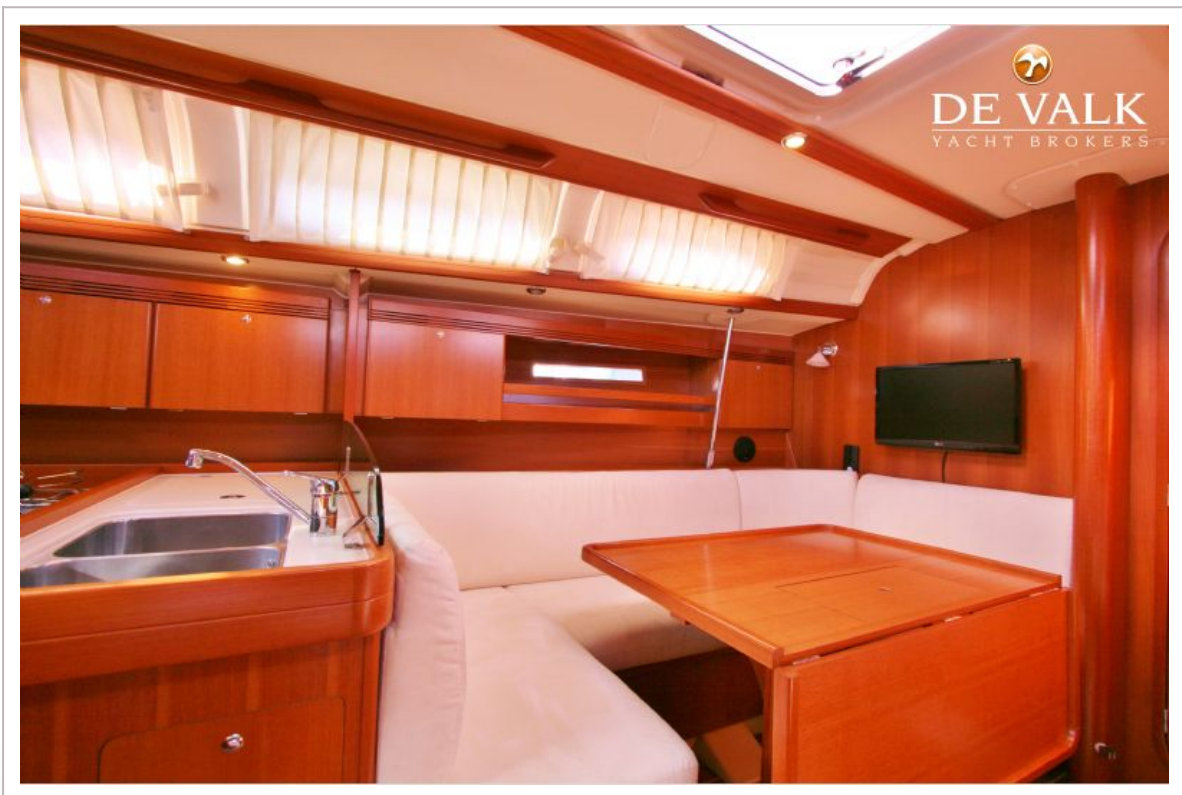
DUFOUR 40 PERFORMANCE



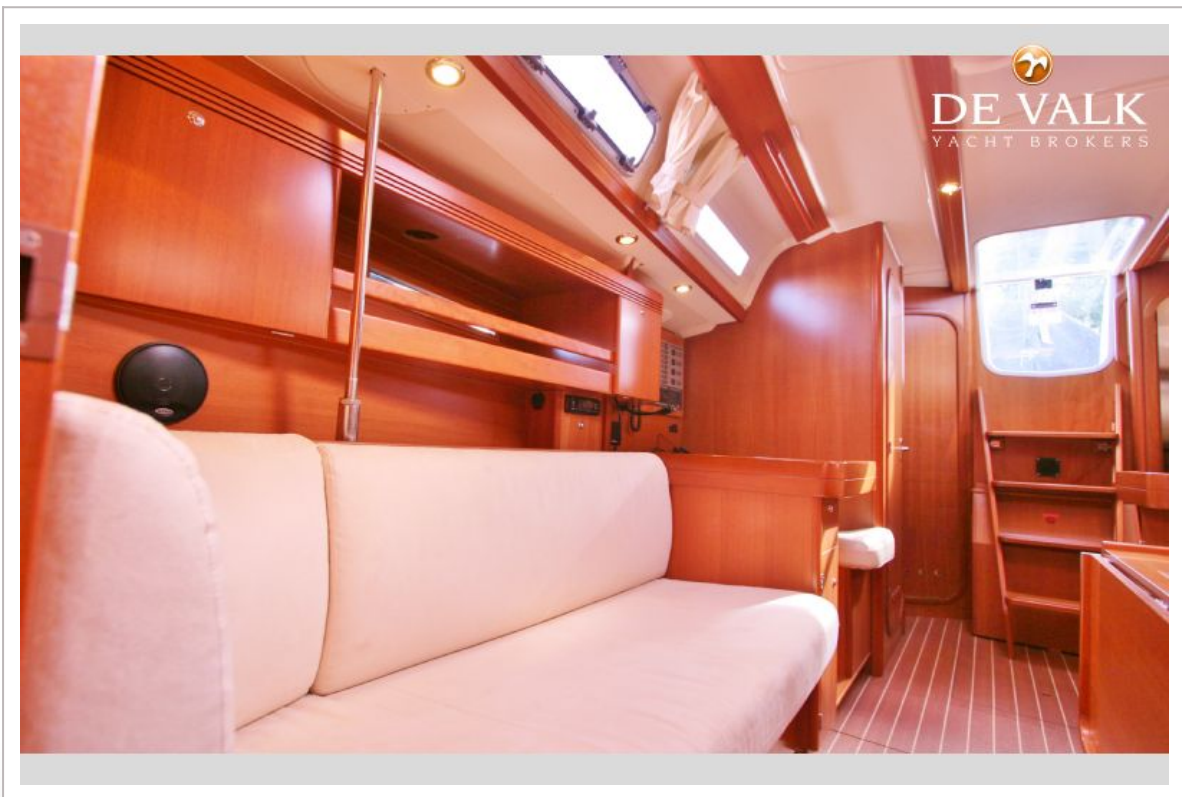
DUFOUR 40 PERFORMANCE



DUFOUR 40 PERFORMANCE



DUFOUR 40 PERFORMANCE



DUFOUR 40 PERFORMANCE

