



DE VALK
YACHT BROKERS



VICTOIRE 1044



DE VALK
YACHT BROKERS

VICTOIRE 1044

BROKER'S COMMENTS

All-time classic by Koopmans and Victoire. The Victoire 1044 is a ultimate Dutch go anywhere, anytime safe cruising yacht with great handling, speed and comfort. She provides for ample comfort below decks as well as on deck with a good clean deck layout and deep cockpit. Sturdy built and well balanced she can handle rough weather and is ideal for long distance cruising. This Victoire 1044 has been provided with many renewals and upgrades in recent years. For an inspection please contact the brokers office.

Johan Schootstra

SPECIFICATIONS

Dimensions	10.44 x 3.24 x 1.87 (m)	Builder	Victoire Jachtbouw
Built	1992	Cabins	2
Material	GRP	Berths	6
Engine(s)	1 x Volvo Penta D1-30 New diesel	Hp/Kw	30.00 (hp), 22.08 (kw)
Asking price	€ 69.000 (VAT Paid)	Lying	contact Hindeloopen

CONTACT

Sales office	De Valk Hindeloopen	Telephone	+31 514 52 40 00
Address	Oosterstrand 1 8713 JS Hindeloopen The Netherlands	E-mail	hindeloopen@devalk.nl

DISCLAIMER

These particulars are given in good faith as supplied but cannot be guaranteed.



VICTOIRE 1044

GENERAL

Model	VICTOIRE 1044
Type	sailing yacht
LOA (m)	10,44
LWL (m)	8,40
Beam (m)	3,24
Draft (m)	1,87
Air draft (m)	15,00
Headroom (m)	1,88
Year built	1992
Builder	Victoire Jachtbouw
Country	The Netherlands
Designer	Dick Koopmans sr.
Displacement (t)	5,6
Ballast (tonnes)	cast iron 2,75 t.
Hull material	GRP
Hull colour	white
Hull shape	round-bilged
Keel type	fin keel
Superstructure material	GRP
Rubbing strake	stainless steel
Deck material	GRP
Deck finish	teak original fully sanded and caulked
Superstructure deck finish	teak original fully sanded and caulked
Cockpit deck finish	teak original fully sanded and caulked
Antifouling (year)	2023
Dorades	2x
Window frame	aluminium
Window material	polycarbonate
Deckhatch	2x
Portholes	aluminium



VICTOIRE 1044

Fuel tank (litre)	stainless steel Approx. 57 ltr.
Level indicator (fuel tank)	yes
Freshwater tank (litre)	stainless steel Approx. 200 ltr.
Extra info	all thru hull fittings new 2022

ACCOMMODATION

Cabins	2
Berths	6
Interior	teak With new upholstery 2020
Saloon	yes
Headroom saloon (m)	1,85 mtr.
Heating	diesel ducted hot air
Heating 2	central hot water Boiler 2017
Navigation center	yes
Chart table	yes
Galley	L-shaped
Countertop	wood
Sink	stainless steel double
Cooker	calor gas Eno 2 burner 2019
Oven	In cooker
Fridge	Compressor 2022 with cold plate
Hot water system	on central heating
Water pressure system	electrical
Owners cabin	v-bed
Wardrobe	hanging and shelves
Guest cabin 1	double bed
Wardrobe	hanging
Toilet	shared
Toilet system	manual
Wash basin	yes
Extra info	CO2 alarm & Smoke alarms



MACHINERY

No of engines	1
Make	Volvo Penta
Type	D1-30 New
HP	30
kW	22.08
Fuel	diesel
Year installed	2023
Maximum speed (kn)	7
Cruising speed (kn)	6
Engine hours	4
Engine cooling system	freshwater heat exchanger
Drive	shaft
Saildrive seal	130S-D new 2024
Engine controls	manual
Engine controls	bowden cable
Exhaust	watercooled
Propeller type	fixed new 2024
Propeller blades	3
Manual bilge pump	yes
Electric bilge pump	yes
Electrical installation	12 / 220 volt
Batteries	12 Volt
Start battery	1 x 55 Ah
Service battery	2 x AGM 100 Ah 2019
Battery charger	Victron 12 Volt 25 Ah
Shorepower	with cable
Extra info	Engine commissioning date 11-5-2024
Extra info	6,8 knots @ 3000 rpm

NAVIGATION



VICTOIRE 1044

Compass	Silva
Depth sounder	Raymarine i50 Depth new 2022
Log	Raymarine i50 Speed new 2022
VHF	yes
Autopilot	Simrad Tiller Pilot new 2019
Plotter/GPS	Raymarine Hybrid Touch 2017 & older plotter at navigation inside
Navigation lights	yes

EQUIPMENT

Sprayhood	yes
Sprayhood with grab rail	New 2017
Cockpit cover	New 2017
Cockpit table	yes
Anchor	Bruce
Anchor chain	yes
Windlass	manual Lofrans
Capstan	yes
Outboard support	yes
Davits	stainless steel
Davits controls	manual
Sea railing	yes
Grab rail (superstructure)	teak
Pushpit	yes
Pulpit	yes
Fenders	yes
Mooring lines	yes
Radio-cd player	yes
Speakers in salon	yes

RIGGING

Rigging	sloop
---------	-------



Standing rigging	wire
Brand mast	Seldén
Material mast	aluminium
Spreaders	2 pair
Mainsail	2017 with lazy bag system
Genoa	2017 with cover
Genoa furler	Furlex 204S
Spinnaker	Approx. 70 m ²
Stormjib	yes
Reefing System	slabreefing
Backstay adjuster	mechanical
Boomvang	mechanical
Primary sheet winch	2x Bariant 27
Halyard winches	1x Bariant 10 1x Bariant 17 both on mast
Reefing winch	Barlow Australia 16 on mast
Spi-pole	aluminium



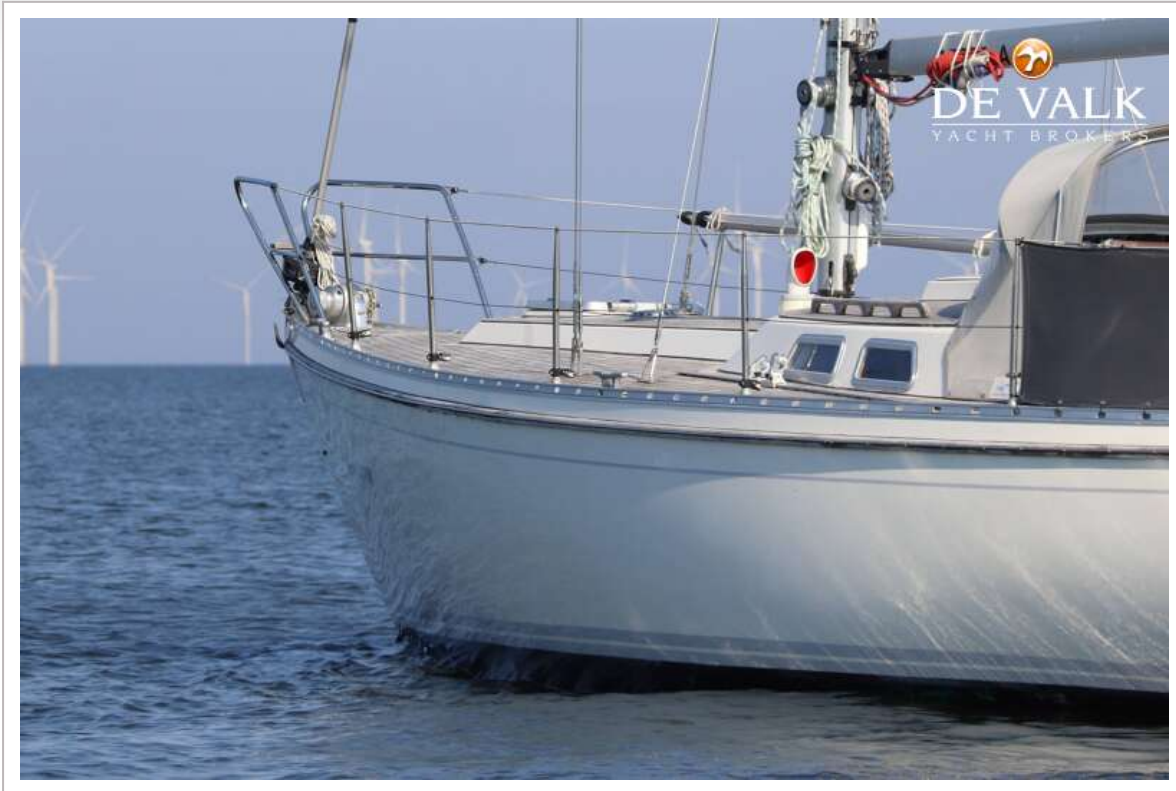
VICTOIRE 1044



VICTOIRE 1044



VICTOIRE 1044



VICTOIRE 1044



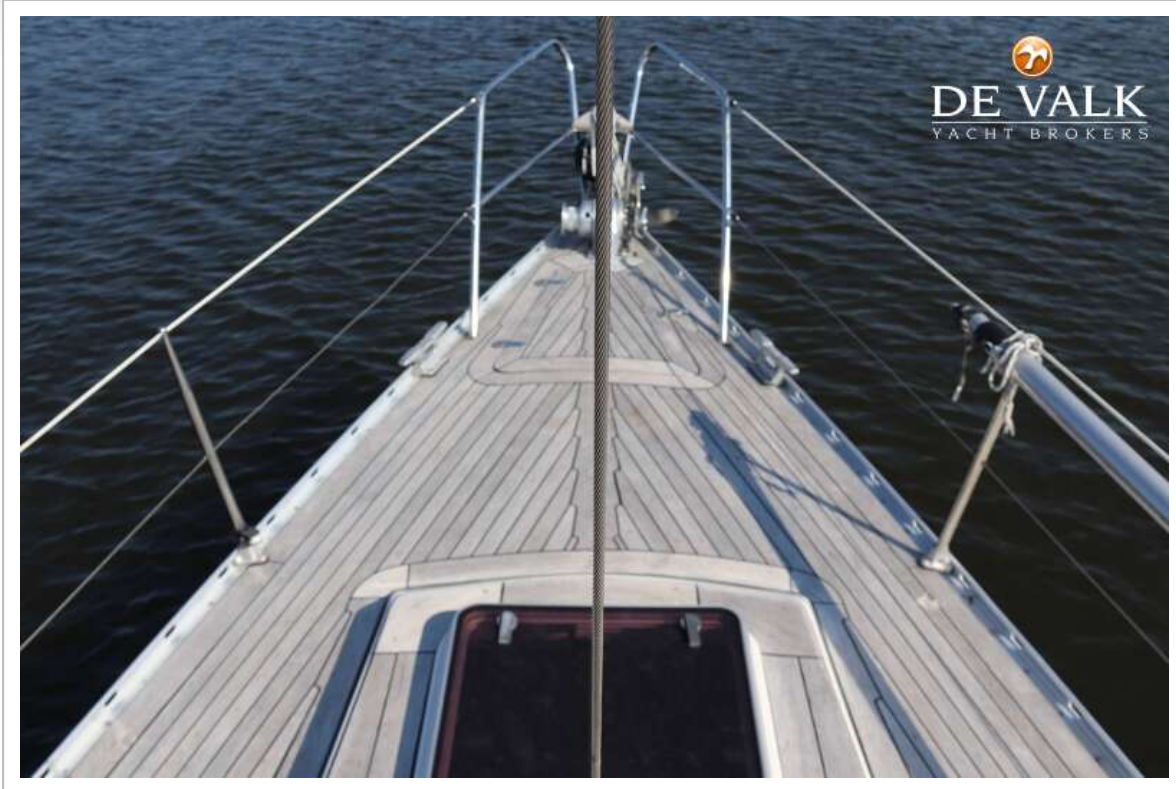
VICTOIRE 1044



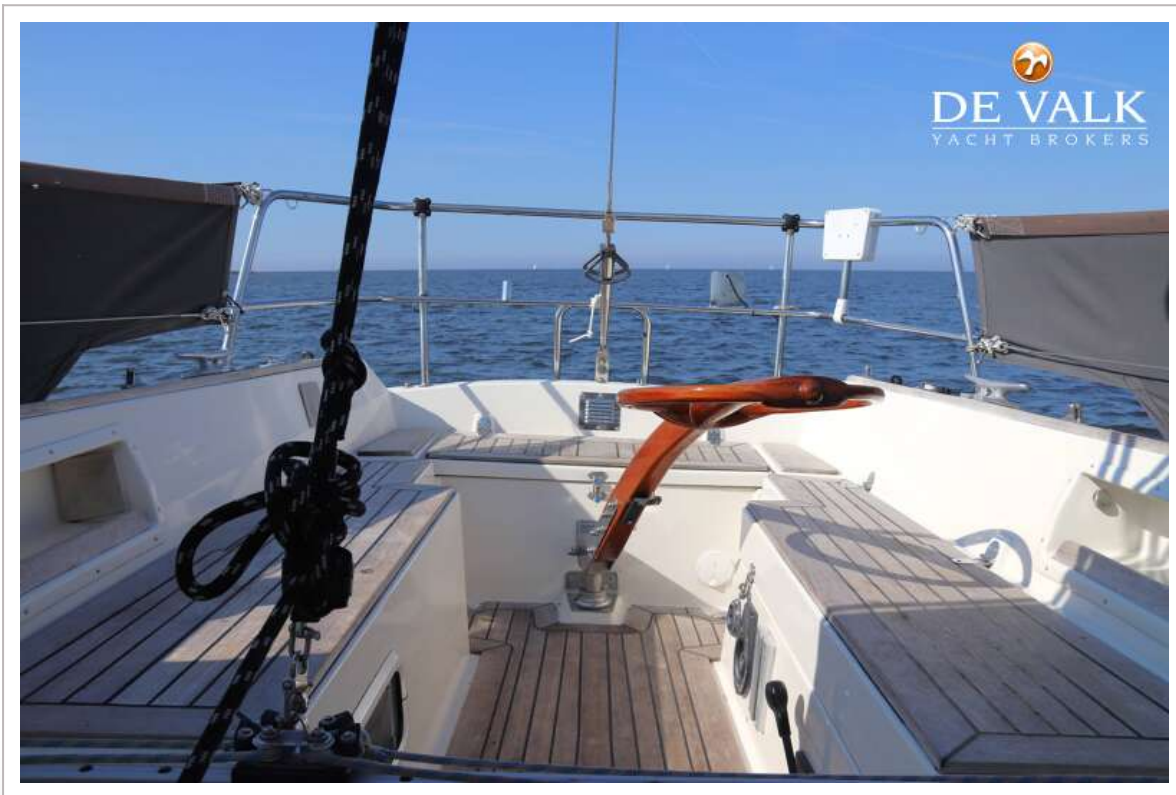
VICTOIRE 1044



VICTOIRE 1044



VICTOIRE 1044



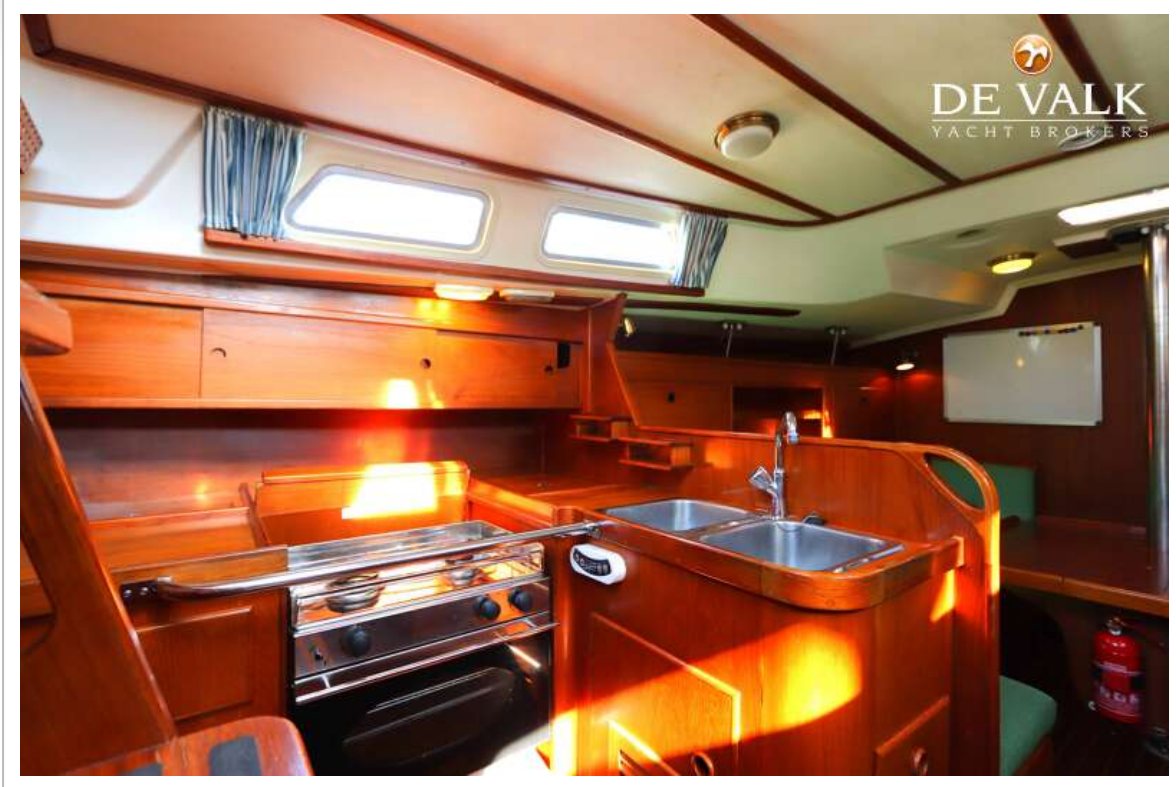
VICTOIRE 1044



VICTOIRE 1044



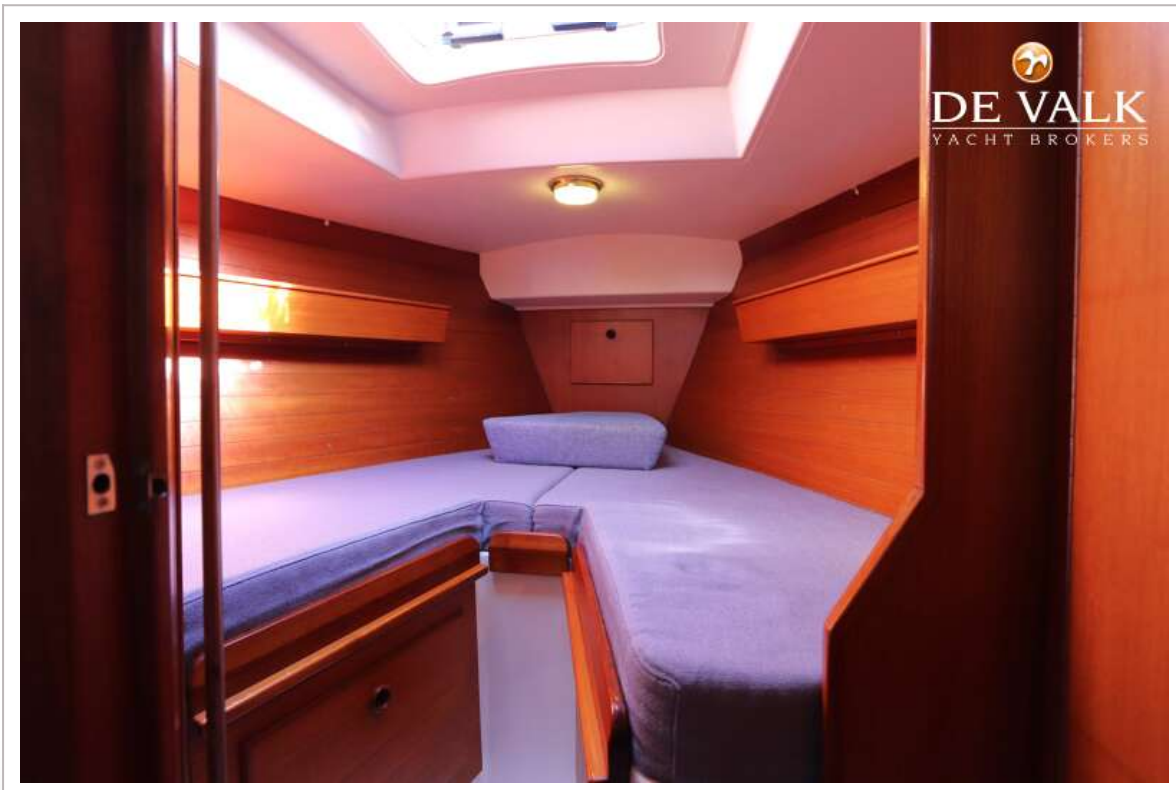
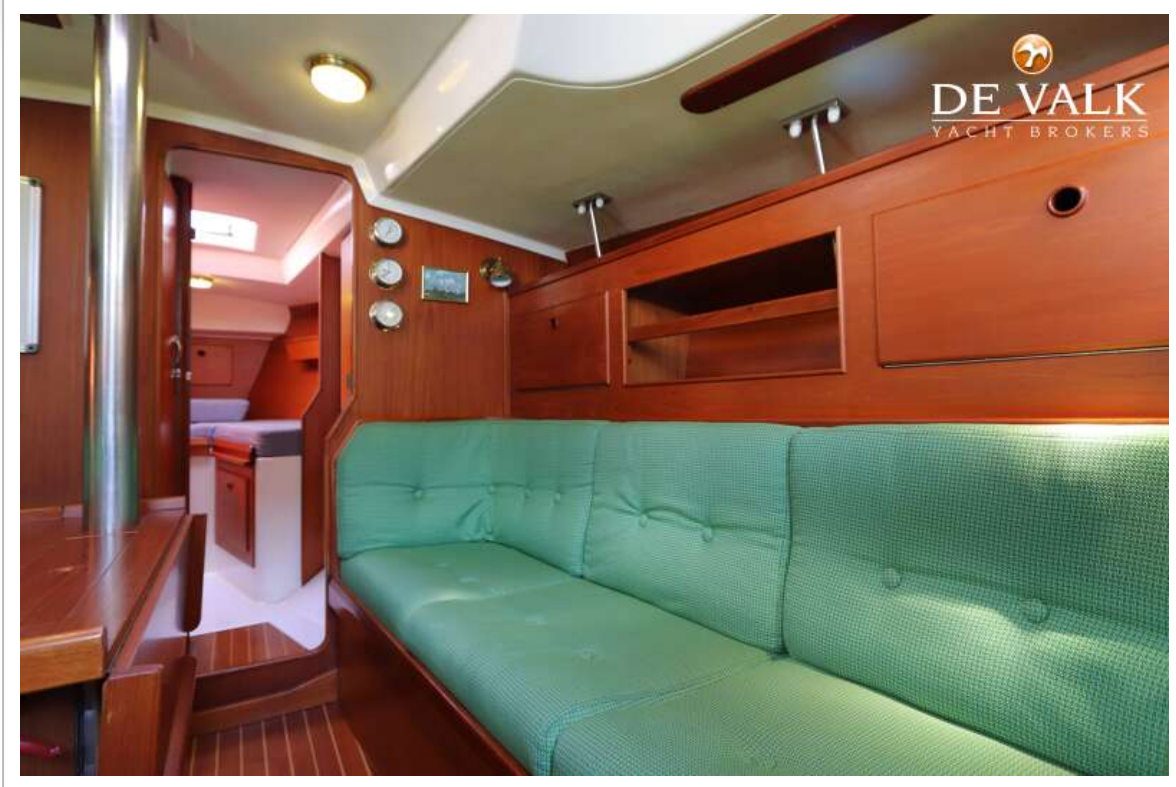
VICTOIRE 1044



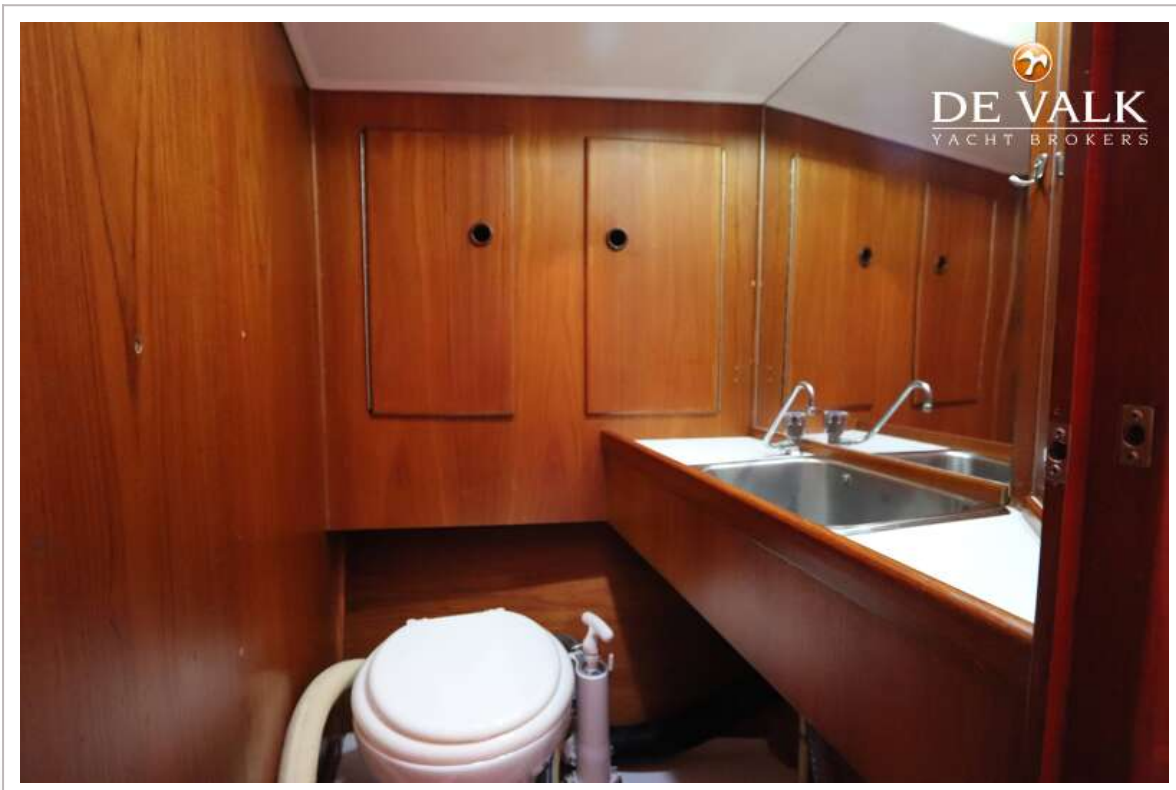
VICTOIRE 1044



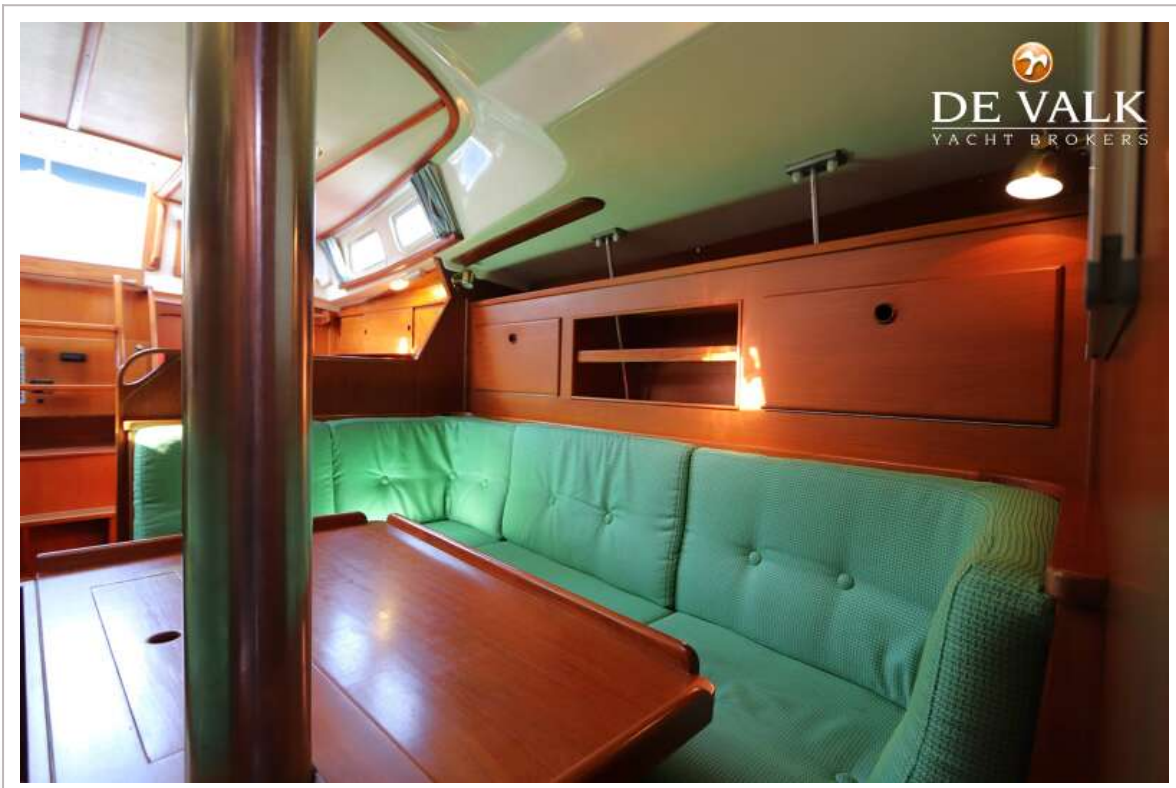
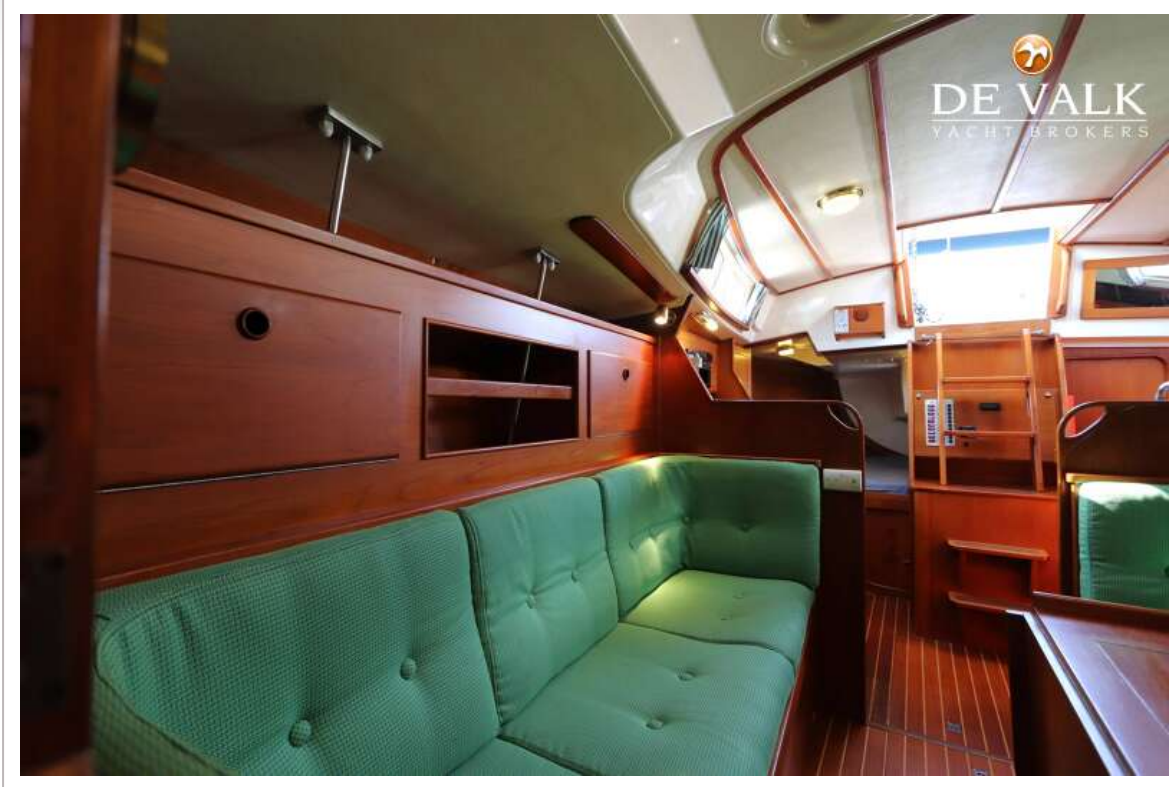
VICTOIRE 1044



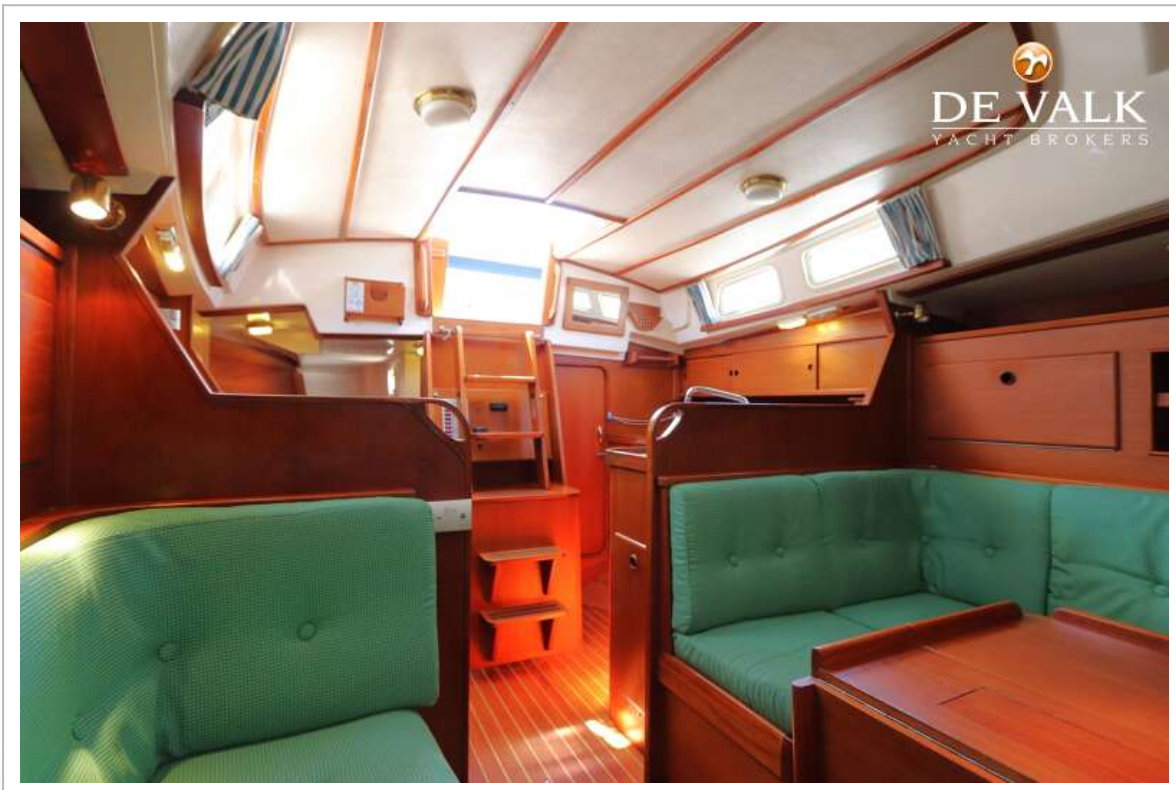
VICTOIRE 1044



VICTOIRE 1044



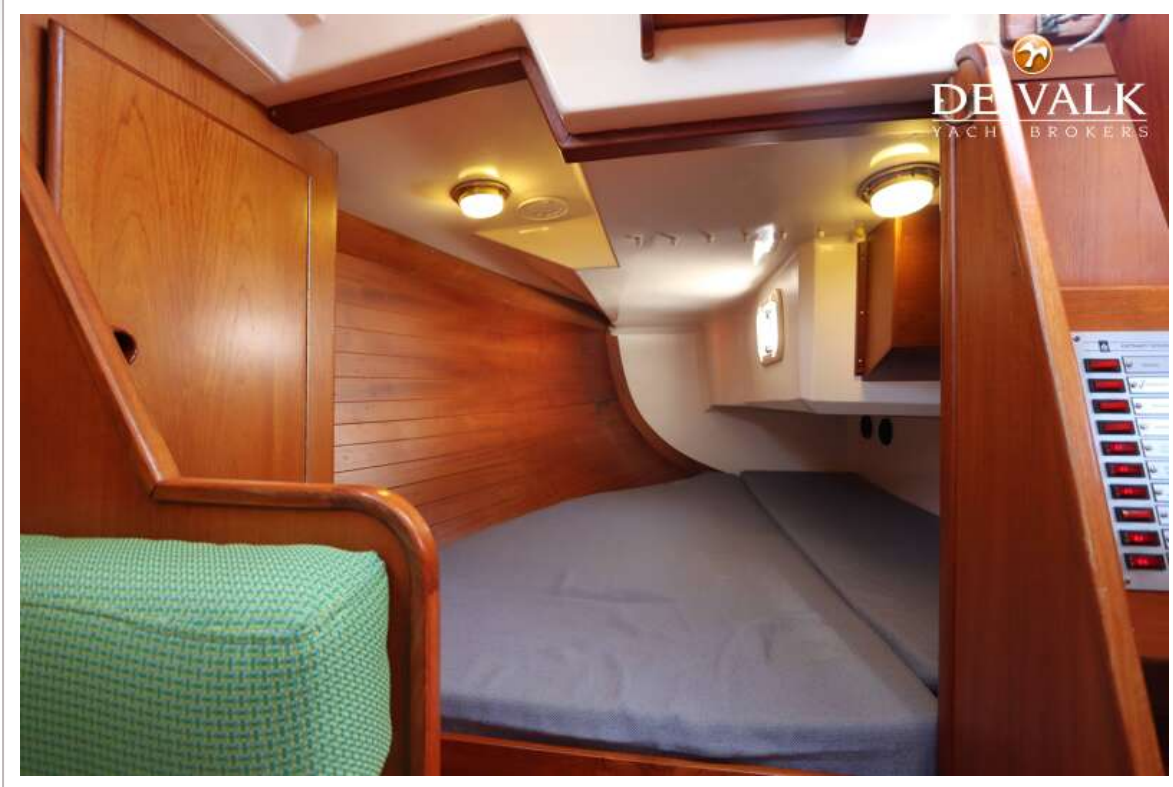
VICTOIRE 1044



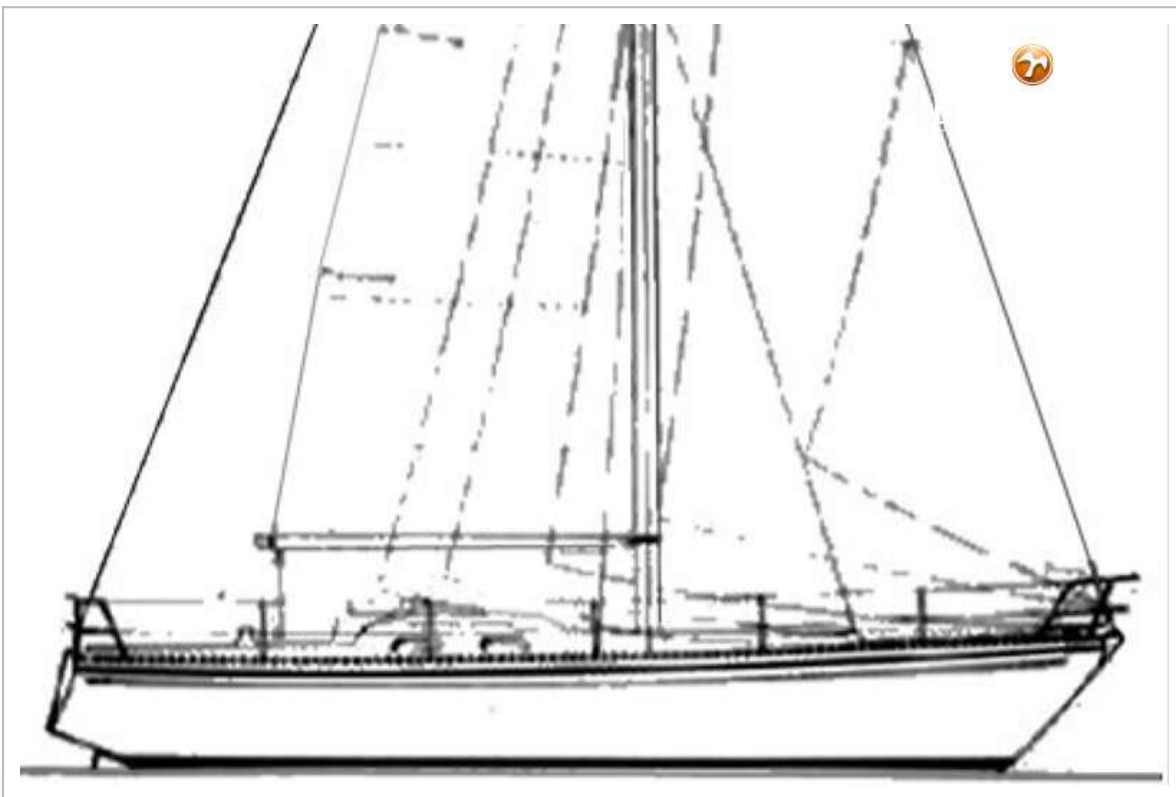
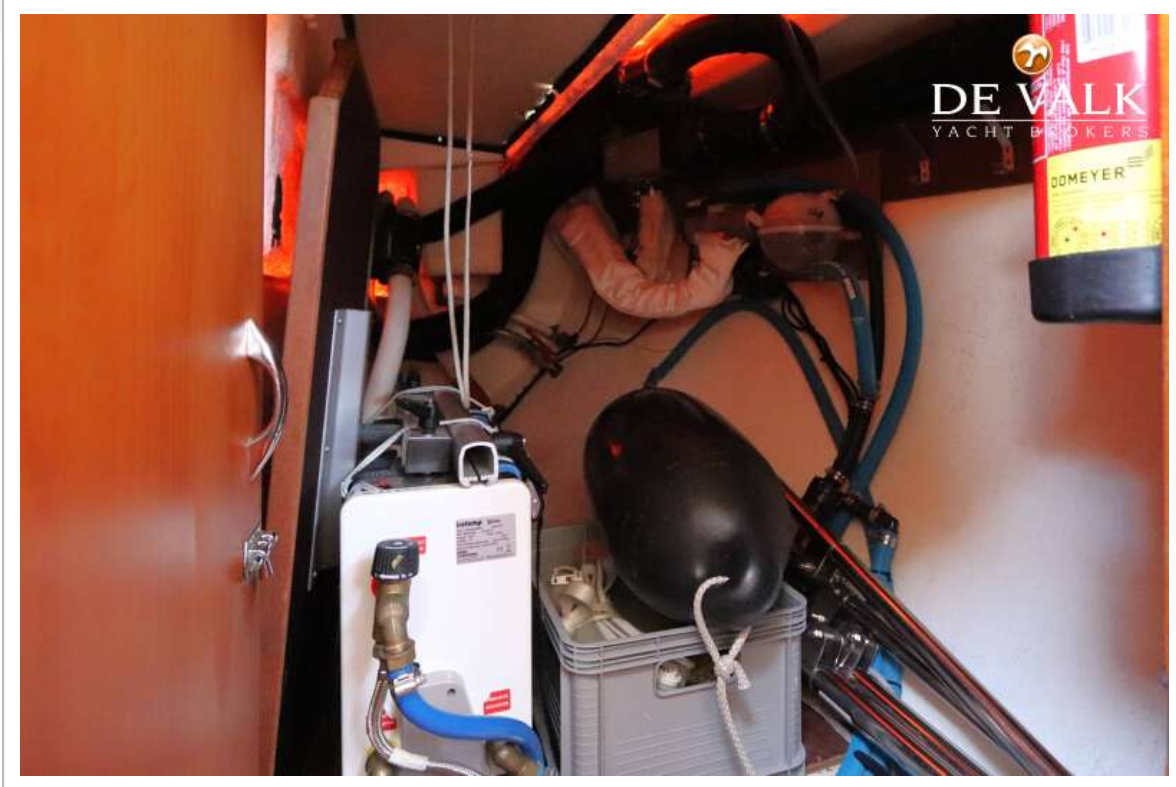
VICTOIRE 1044



VICTOIRE 1044



VICTOIRE 1044



VICTOIRE 1044

