



DE VALK
YACHT BROKERS



GRAND BANKS 36 EUROPA



DE VALK
YACHT BROKERS

GRAND BANKS 36 EUROPA

BROKER'S COMMENTS

An all round seaworthy performer; this Grand Bank 36 Europa is capable of real deep water cruising. Long keel, hard chine and a deep forefoot hull provides stability and seaworthiness. Equipped with two Ford Lehman diesel engines, electric bow thruster, generator, etc. One of the finest Grand Banks 36 Europa models in the market at this moment. This one is equipped with two single berths, seperate toilet an seperate shower in front. This Grand Banks is definitely worth a visit! You are very welcome to visit her in our sales marina in Hindeloopen.

Henk Sijbranda

SPECIFICATIONS

Dimensions	11.23 x 3.86 x 1.22 (m)	Builder	American Marine Limited
Built	1990	Cabins	1
Material	GRP	Berths	4
Engine(s)	2 x Ford Lehman diesel	Hp/Kw	2 x 135.00 (hp), 99.00 (kw)
Asking price	sold (VAT)	Lying	at sales office

CONTACT

Sales office	De Valk Hindeloopen	Telephone	+31 514 52 40 00
Address	Oosterstrand 1 8713 JS Hindeloopen The Netherlands	E-mail	hindeloopen@devalk.nl

DISCLAIMER

These particulars are given in good faith as supplied but cannot be guaranteed.



GRAND BANKS 36 EUROPA

GENERAL

Model	GRAND BANKS 36 EUROPA
Type	motor yacht
LOA (m)	11,23
LWL (m)	10,72
Beam (m)	3,86
Draft (m)	1,22
Air draft (m)	6,22
Air draft min (m)	3,76
Headroom (m)	1,99
Year built	1990
Builder	American Marine Limited
Country	Singapore
Designer	American Marine
Displacement (t)	11
CE norm	NA
Hull material	GRP
Hull colour	white
Hull shape	deep-V
Superstructure material	GRP
Rubbing strake	stainless steel
Deck material	GRP
Deck finish	teak
Cockpit deck finish	teak
Antifouling (year)	05-2019
Window frame	wood
Window material	tempered glass
Deckhatch	yes
Flybridge	yes
Mast can be lowered	manual
Fuel tank (litre)	2x 750 ltr.



Freshwater tank (litre)	580 ltr.
Wheel steering	hydraulic
Flybridge helm position	hydraulic
Emergency tiller	yes

ACCOMMODATION

Cabins	1
Berths	4
Interior	teak
Floor	parquet
Open cockpit	yes
Saloon	yes
Headroom saloon (m)	1,99
Heating	diesel ducted hot air Webasto Airtop Evo M
Sliding door to cockpit	yes
Galley	yes
Countertop	
Sink	stainless steel
Cooker	electric AEG - 4 burner
Oven	Miele
Fridge	Grunert
Hot water system	220V + engine
Water pressure system	electrical
Owners cabin	v-bed
Bed length (m)	1,95
Wardrobe	hanging/drawers/shelves
Toilet	separate
Toilet system	electric
Wash basin	at the toilet
Shower	separate



MACHINERY

No of engines	2
Make	Ford
Type	Lehman
HP	135,00
kW	99,00
Fuel	diesel
Year installed	1990
Maximum speed (kn)	11,00
Cruising speed (kn)	9,00
Engine hours	BB 2.620 / SB 2.669
Engine cooling system	freshwater heat exchanger
Drive	shaft
Engine controls	bowden cable
Gearbox	hydraulic
Bowthruster	electric Vetus
Exhaust	watercooled
Propeller type	fixed
Propeller blades	3
Propeller shaft material	stainless steel
Shaft lubrication	water
Manual bilge pump	yes
Electric bilge pump	yes
Electrical installation	12 / 220 V
Generator	Onan 3.5 Marine GenSet
Start battery	2x
Service battery	yes
Generator battery	1x
Battery charger	Sterling Power 12v - 50a
Shorepower	with cable



NAVIGATION

Compass	Danforth
Compass on flybridge	Danforth
Depth sounder	Displayed on plotters
Log	Displayed on
Windset	Raymarine ST40
VHF	Raymarine Ray55E + Raymarine RayMic
Autopilot	Raymarine P70s + Smart controller
Rudder angle indicator	VDO
Radar	Raymarine Quantum
Radar/GPS/plotter	Raymarine A series inside and Raymarine eS series 9" Hybridtoch
AIS receiver	Raymarine AIS700
Navigation lights	yes

EQUIPMENT

Bimini	On Flybridge
Bathing platform	yes
Boarding ladder	stainless steel
Deck shower	yes
Anchor	Delta Stainless steel
Anchor chain	Stainless steel
Windlass	electrical Lofrans
Capstan	yes
Dinghy	rigid hull
Sea railing	
Grab rail (superstructure)	stainless steel
Railing side opening gates	yes
Pulpit	yes
Wiper	3x
Horn	



Fenders	yes
Mooring lines	yes
TV	yes
TracVision ball	TracVision M2
Radio-cd player	Pioneer
Sub-woofer	yes
Speakers in salon	yes
Clock - barometer	yes
Fire extinguisher	yes



GRAND BANKS 36 EUROPA



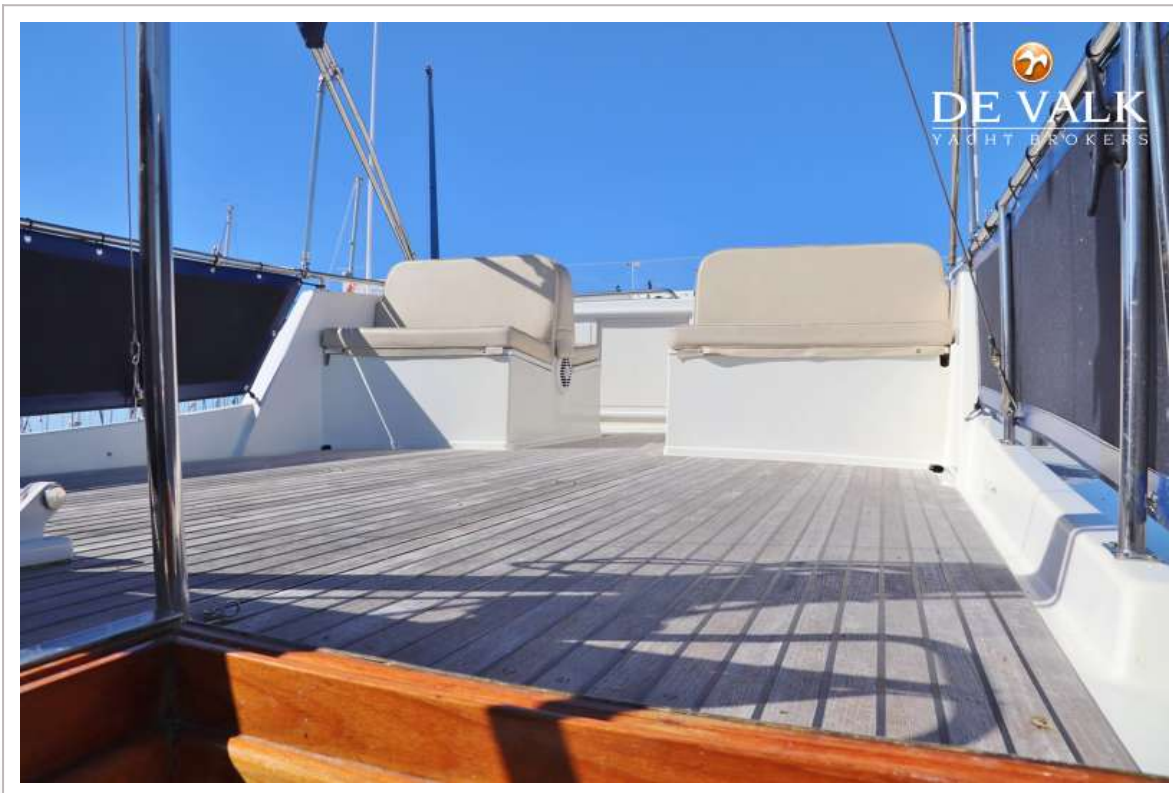
GRAND BANKS 36 EUROPA



GRAND BANKS 36 EUROPA



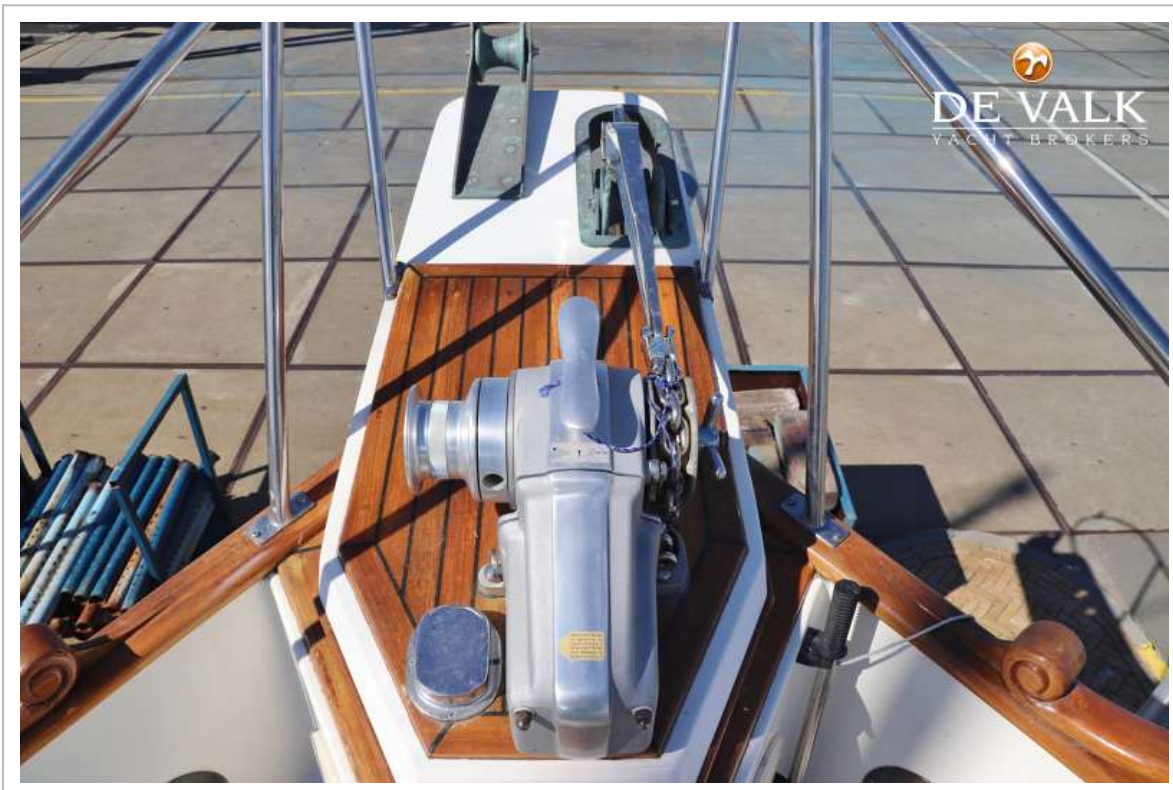
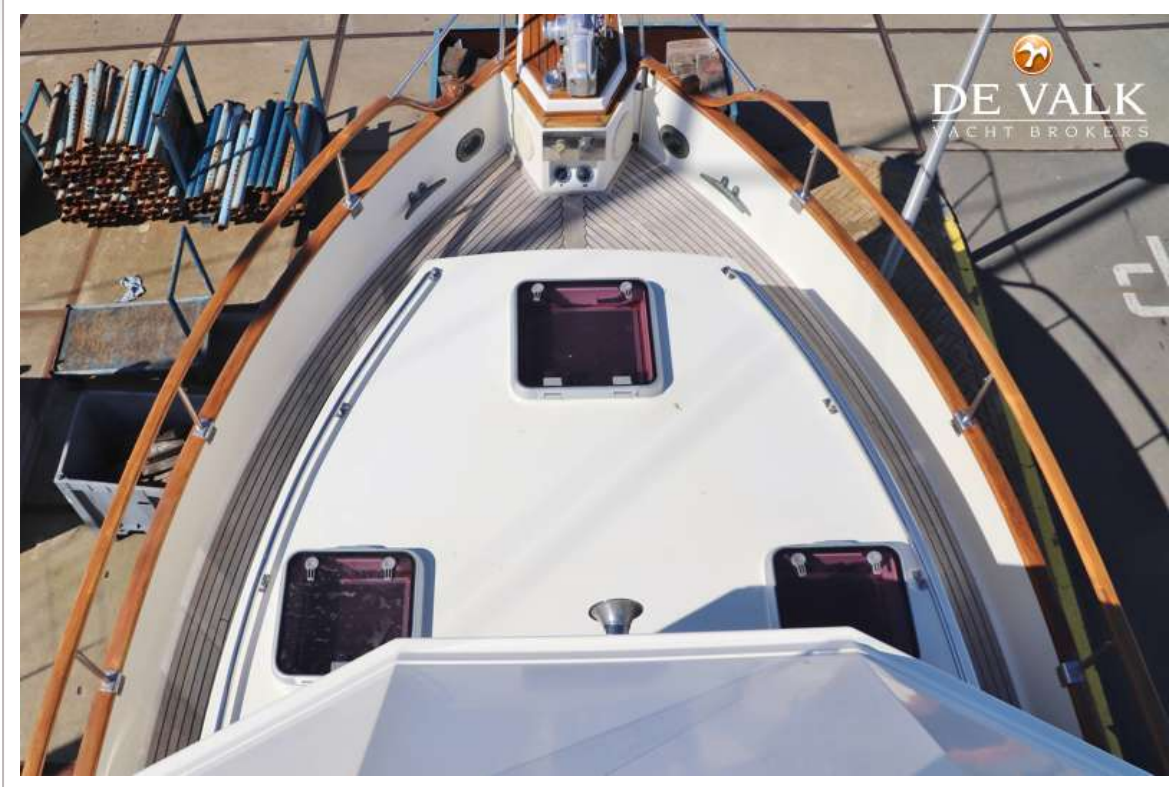
GRAND BANKS 36 EUROPA



GRAND BANKS 36 EUROPA



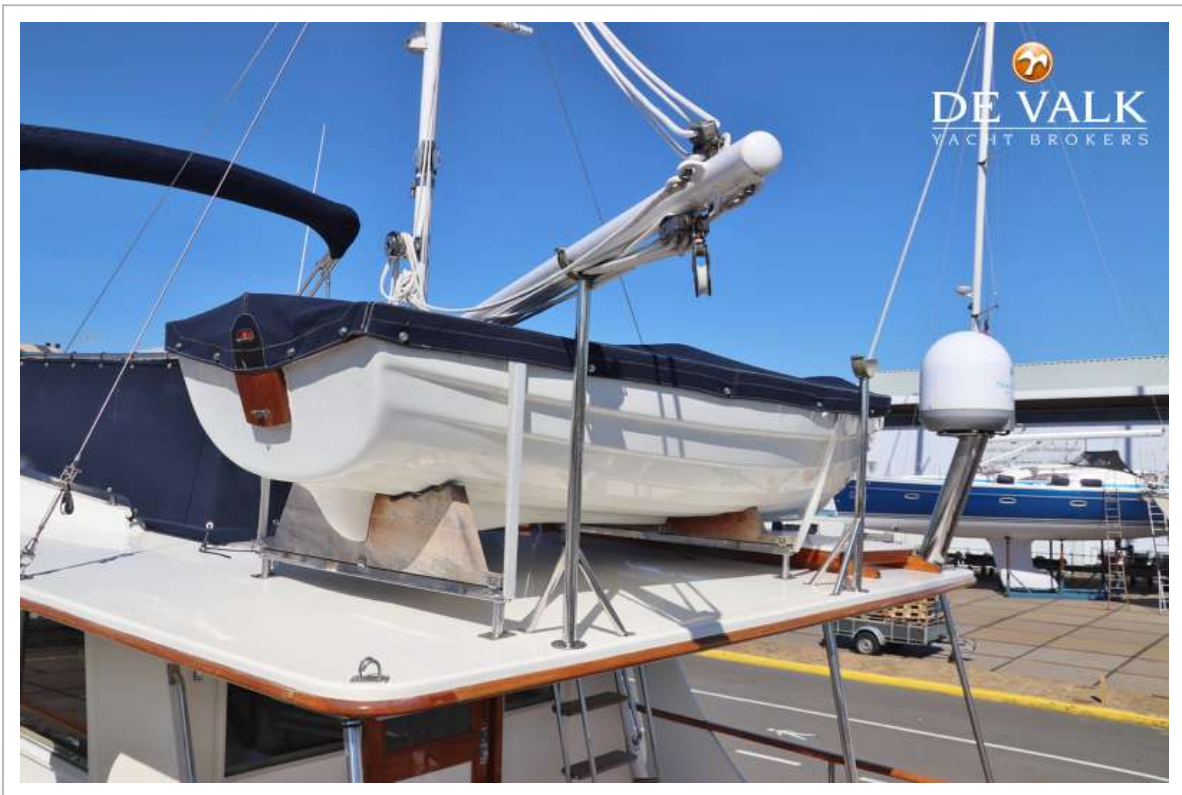
GRAND BANKS 36 EUROPA



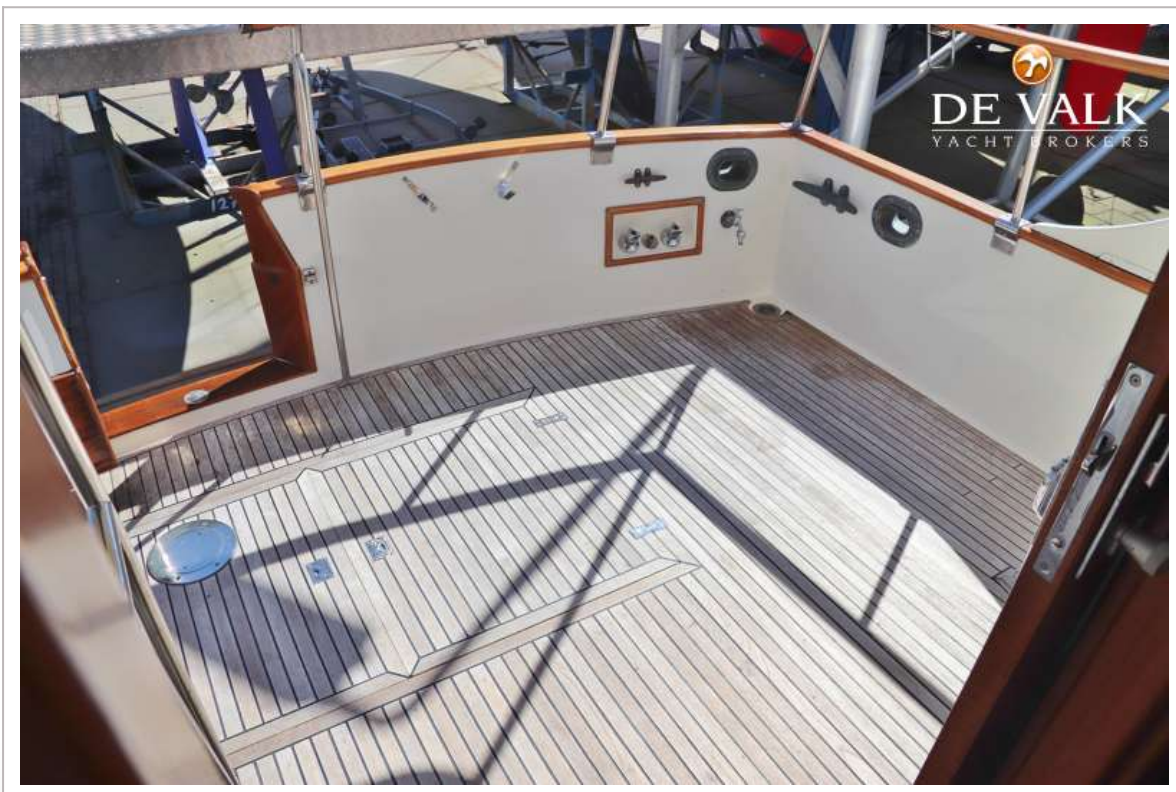
GRAND BANKS 36 EUROPA



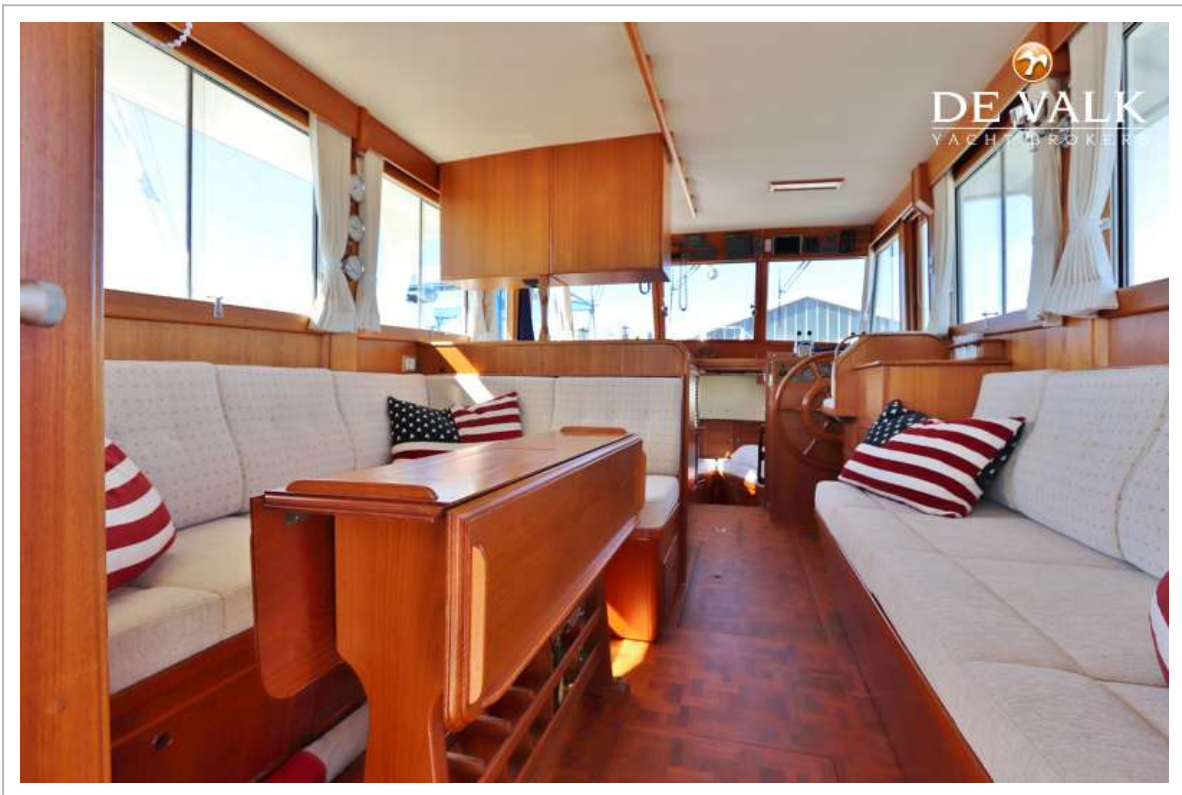
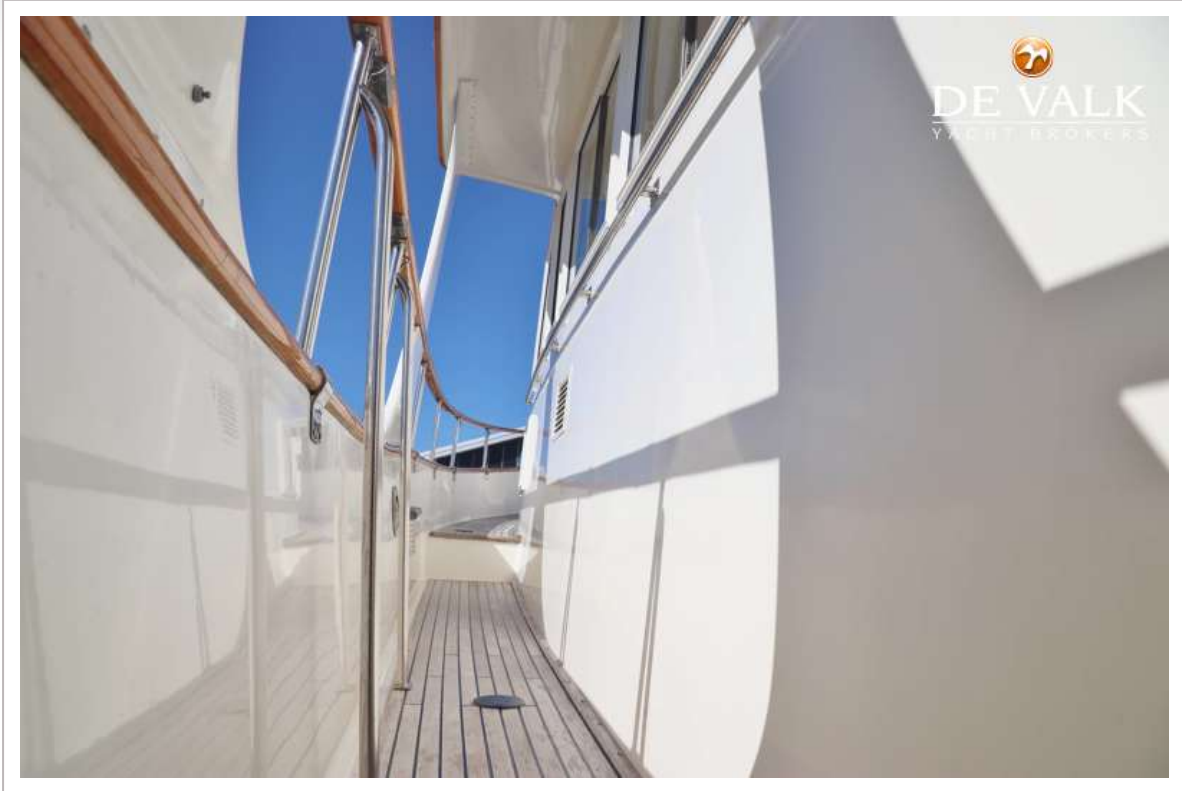
GRAND BANKS 36 EUROPA



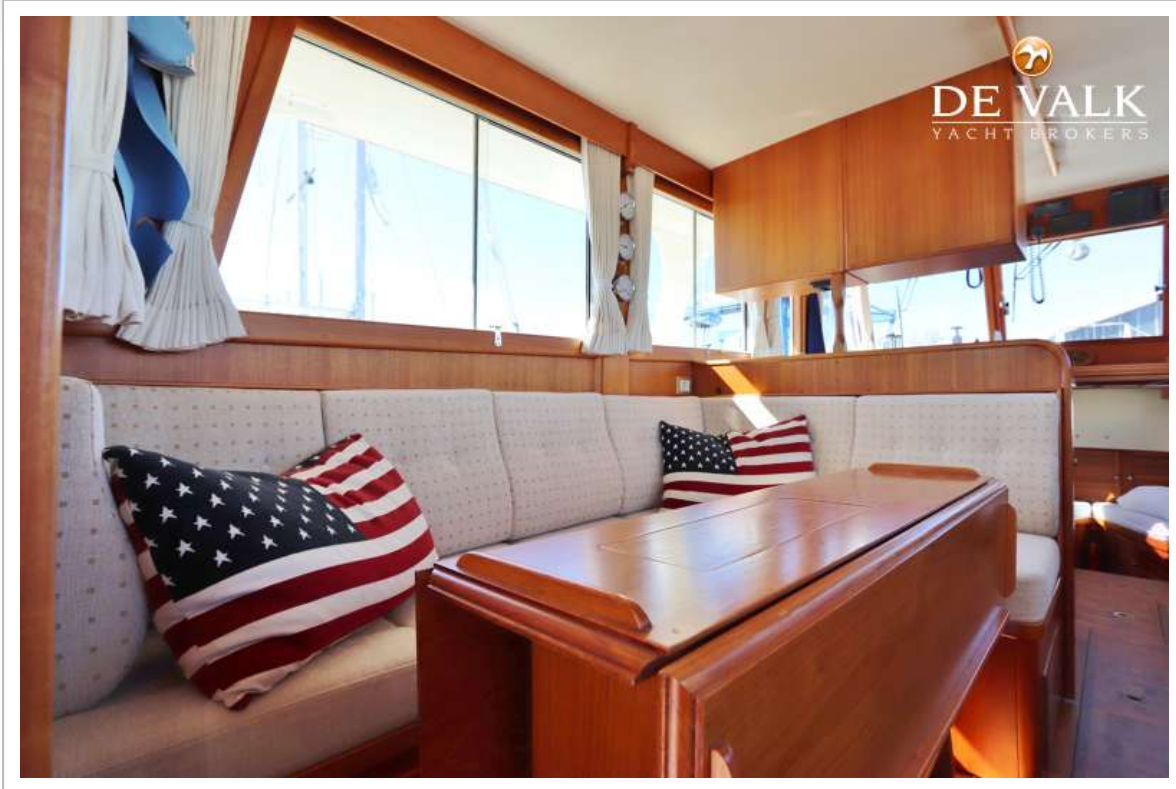
GRAND BANKS 36 EUROPA



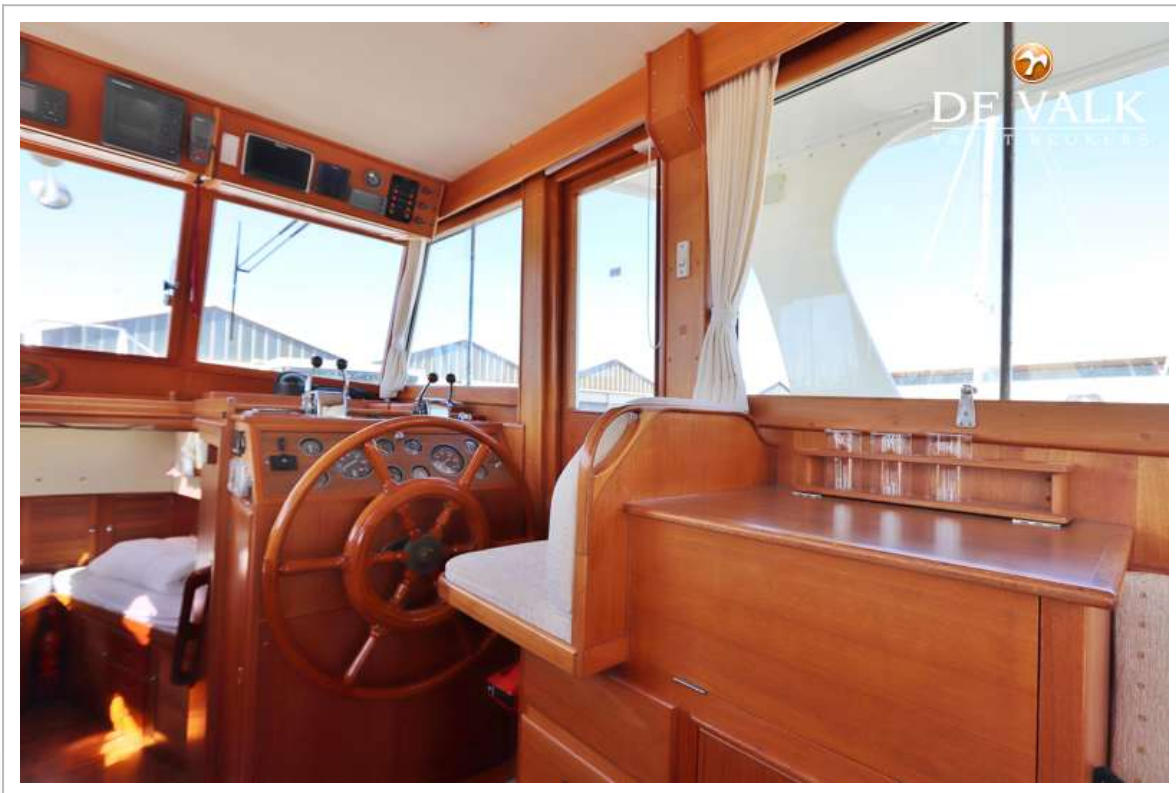
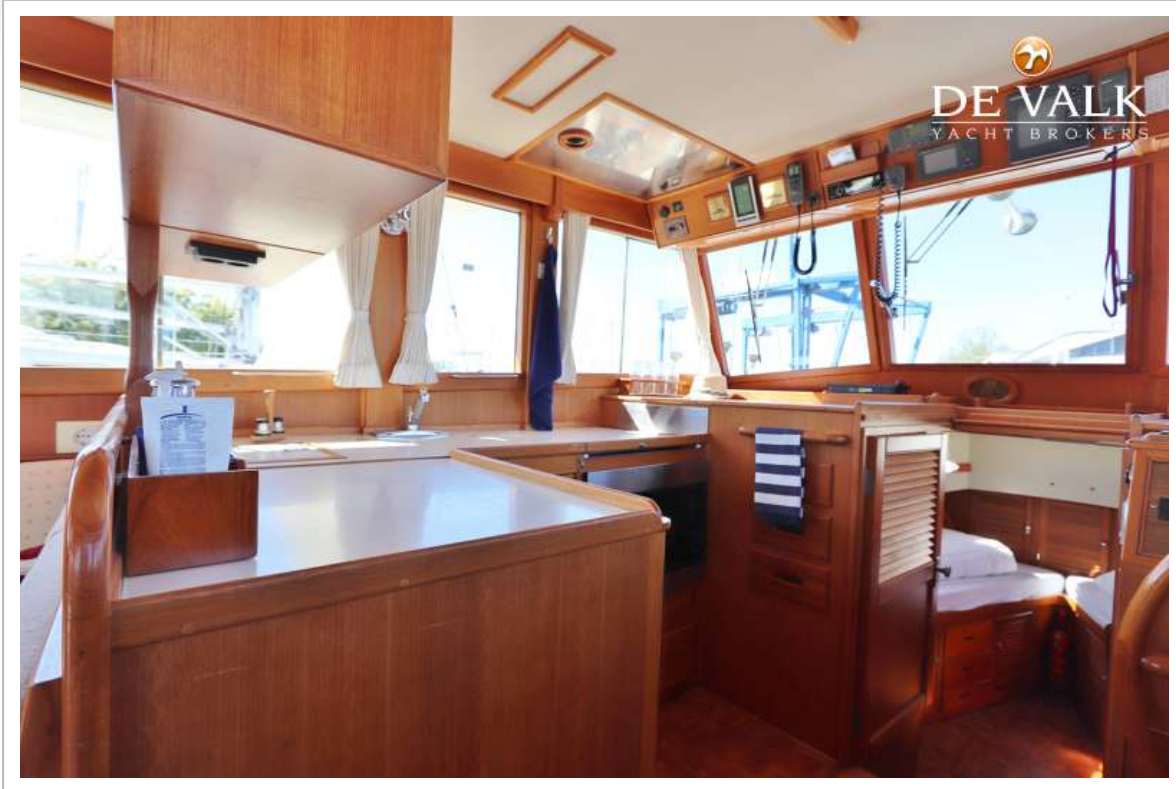
GRAND BANKS 36 EUROPA



GRAND BANKS 36 EUROPA



GRAND BANKS 36 EUROPA



GRAND BANKS 36 EUROPA



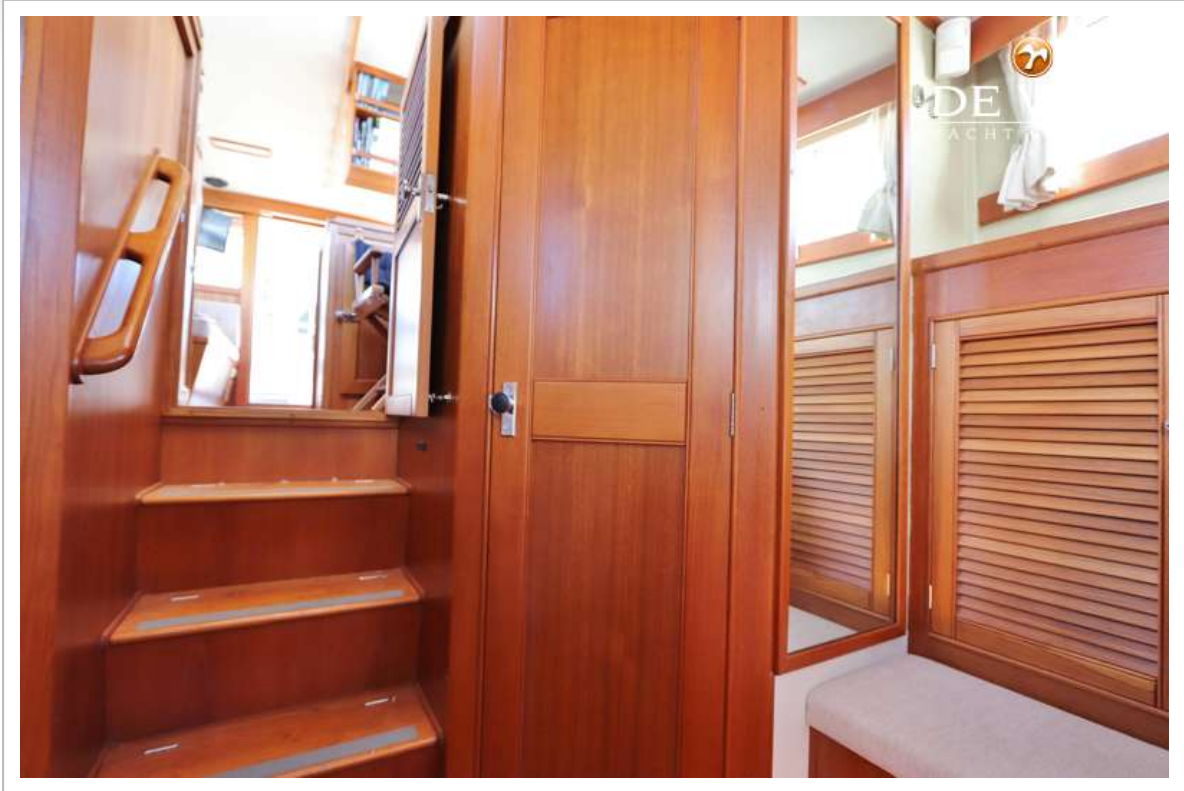
GRAND BANKS 36 EUROPA



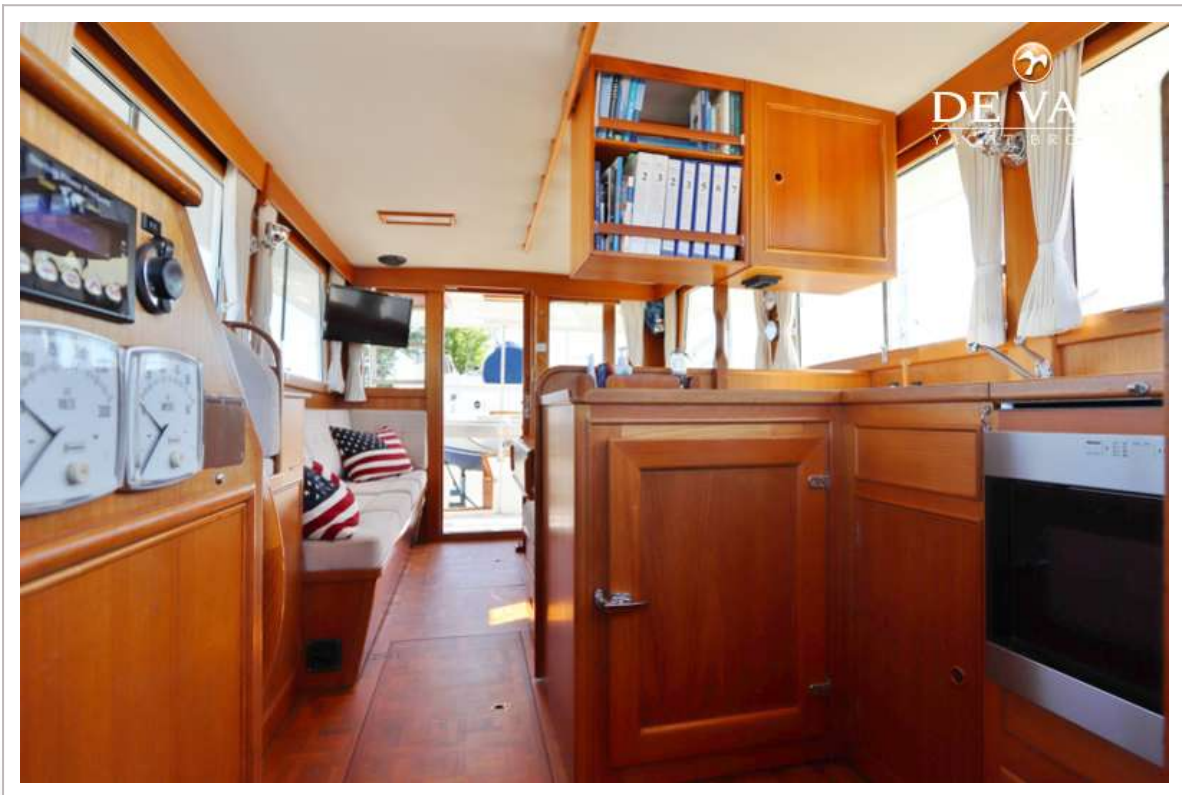
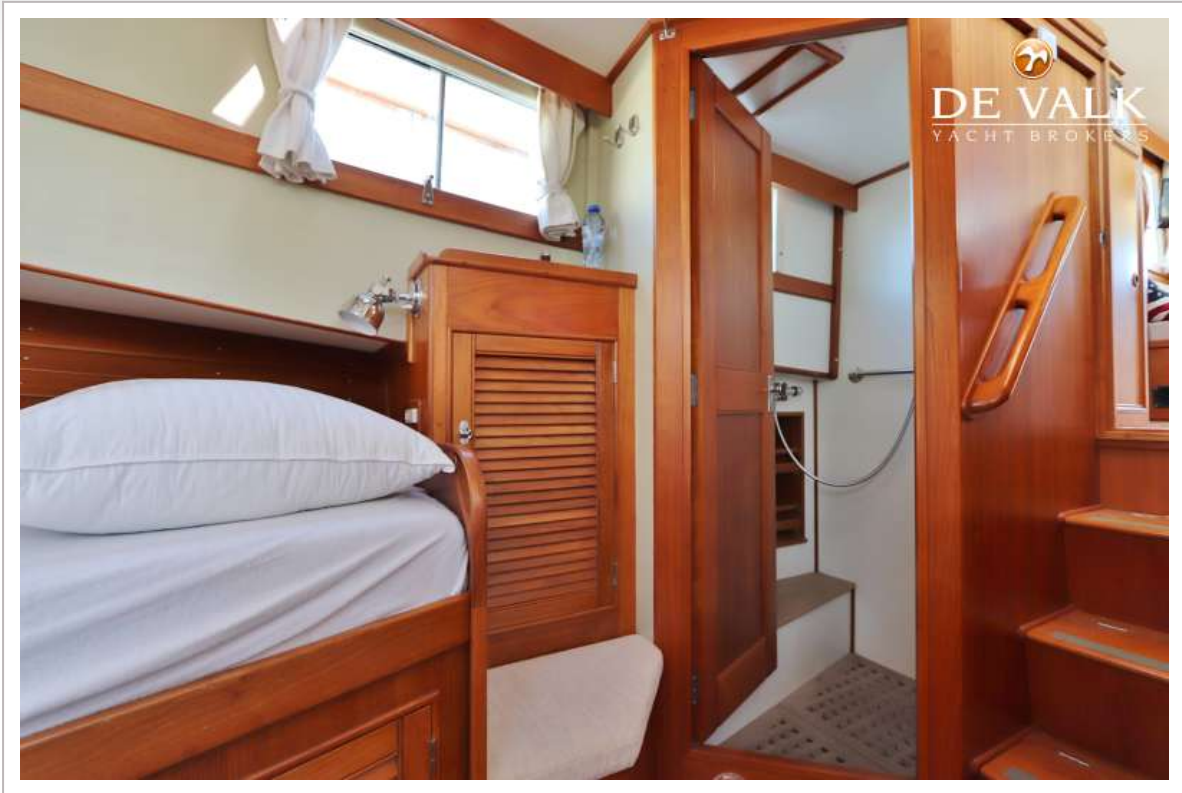
GRAND BANKS 36 EUROPA



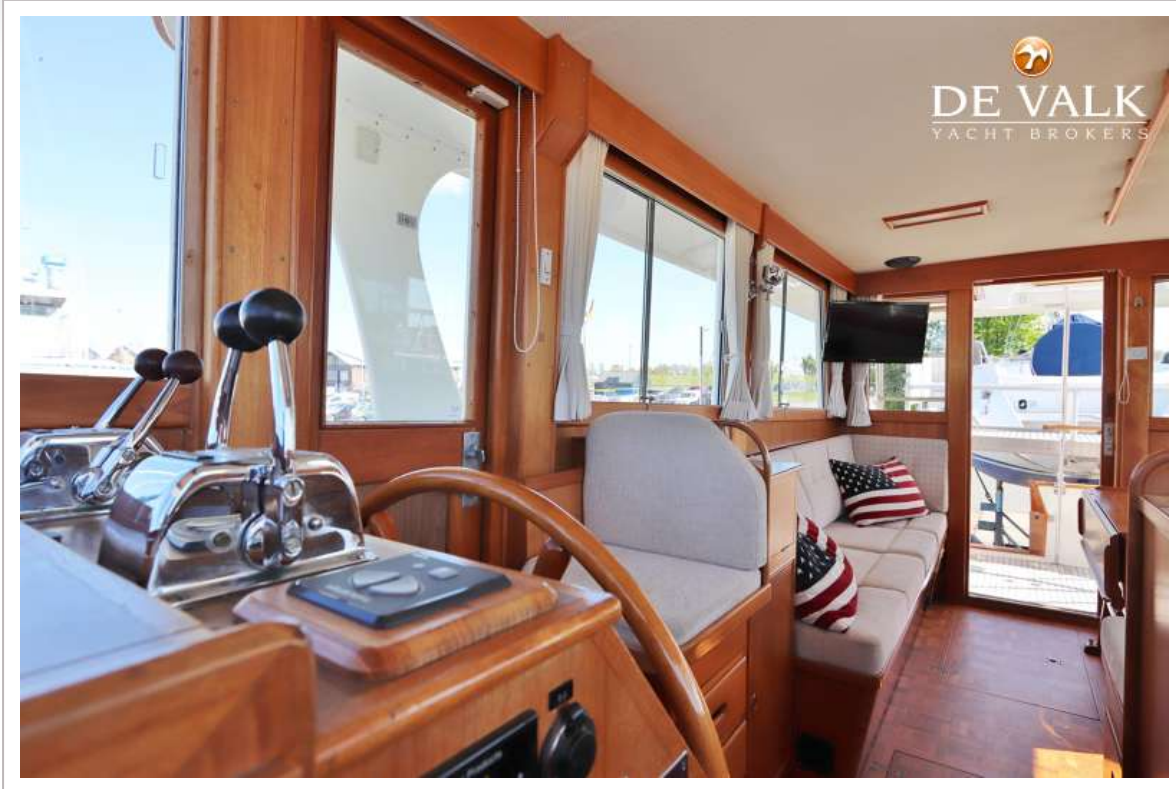
GRAND BANKS 36 EUROPA



GRAND BANKS 36 EUROPA



GRAND BANKS 36 EUROPA



GRAND BANKS 36 EUROPA

