



## KOOPMANS 54



## BROKER'S COMMENTS

This Koopmans 54 'Rock steady' was originally build at the Folmer yard in Rijs after a design of the Dutch well known designer Dick Koopmans Sr. She is very seaworthy, ready to explore the 7 seas. Also her heavy insulation, big fuel and water tanks and self supporting devices gives you the opportunity to sail wherever you want to go. The centreboard keel of this aluminum Koopmans 54 allows you to go places where other sailyachts owners only can dream off.

*Hans Visser*

## SPECIFICATIONS

<b>Dimensions</b>	16.45 x 4.89 x 2,90 / 1.70 (m)	<b>Builder</b>	Folmer Rijs
<b>Built</b>	1993	<b>Cabins</b>	2
<b>Material</b>	Aluminium	<b>Berths</b>	7
<b>Engine(s)</b>	1 x Perkins M135 6 cyl. diesel	<b>Hp/Kw</b>	135.00 (hp), 99.00 (kw)
<b>Asking price</b>	€ 445.000 (VAT Paid)	<b>Lying</b>	at sales office

## CONTACT

<b>Sales office</b>	De Valk Hindeloopen	<b>Telephone</b>	+31 514 52 40 00
<b>Address</b>	Oosterstrand 1 8713 JS Hindeloopen The Netherlands	<b>E-mail</b>	hindeloopen@devalk.nl

## DISCLAIMER

These particulars are given in good faith as supplied but cannot be guaranteed.



## GENERAL

<b>Model</b>	KOOPMANS 54
<b>Type</b>	sailing yacht
<b>LOA (m)</b>	16,45
<b>LWL (m)</b>	13,45
<b>Beam (m)</b>	4,89
<b>Draft (m)</b>	1,70
<b>Draft min (m)</b>	2,90
<b>Air draft (m)</b>	20,50
<b>Headroom (m)</b>	2,00
<b>Year built</b>	1993
<b>Launched</b>	2003
<b>Builder</b>	Folmer Rijs
<b>Country</b>	The Netherlands
<b>Designer</b>	Koopmans design 274-350
<b>Displacement (t)</b>	33
<b>Ballast (tonnes)</b>	9500 + 400 in the hull
<b>CE norm</b>	NA
<b>Hull material</b>	aluminium
<b>Hull colour</b>	blue International paint system
<b>Hull thickness (mm)</b>	8,7,6 mm Almg 4,5 Mn-W28
<b>Hull shape</b>	round-bilged
<b>Keel type</b>	centreboard Hydraulic
<b>Superstructure material</b>	aluminium 5 & 6 mm Almg 4,5 Mn-W28
<b>Superstructure (mm)</b>	5 & 6 mm Almg 4,5 Mn-W28
<b>Rubbing strake</b>	aluminum
<b>Deck material</b>	aluminium
<b>Deck finish</b>	teak
<b>Superstructure deck finish</b>	paint
<b>Cockpit deck finish</b>	teak
<b>Dorades</b>	5x stainless steel



Window frame	aluminium
Window material	tempered glass
Deckhatch	7
Insulation	foam Heavy Simocel Coplast
Fuel tank (litre)	4 x 900
Level indicator (fuel tank)	yes
Fuel daytank (litre)	140
Freshwater tank (litre)	2 x 800 & 1 x 500 (optional watermaker)
Level indicator (freshwater)	yes
Blackwater tank (litre)	2 x 500
Wheel steering	hydraulic
Inside helm position	yes
Outside helm position	hydraulic
More info on hull	Painted in 2017
Extra info	Superstructure painted in 2017

## ACCOMMODATION

Cabins	2
Berths	7
Interior	mahogany
Floor	wood
Aft deck	yes
Pilot house/deck saloon	Headroom 1.93 mtr
Saloon	yes
Headroom saloon (m)	Headroom 2.08 mtr
Heating	central heating 1x Webasto
Heating 2	1x Dickinson & 1 x electric
Air-conditioning	reverse cycle airco Cruisair
Navigation center	yes
Chart table	yes
Aft Cabin	Owners cabin



Opening door to cockpit	yes
Galley	Large U shaped
Countertop	corian
Sink	stainless steel
Cooker	electric Miele - 4 burner
Extractor	Miele De Luxe SE80
Gas alarm	In kitchen
Microwave/oven combi	Miele De Luxe H330
Fridge	2x
Freezer	1x
Hot water system	220V Boiler
Water pressure system	electrical
Manual and/or foot pump	yes
Dishwasher	Miele Turbo Thermic G590
Coffee maker	yes
Crockery	yes
Owners cabin	yes
Bed length (m)	2.00 x 1.80 mtr.
Wardrobe	hanging/drawers/shelves
Bathroom	en suite
Toilet	yes
Toilet system	electric
Wash basin	yes
Shower	yes
Guest cabin 1	double bed + single bed
Bed length (m)	2 mtr.
Wardrobe	hanging and shelves
Bathroom	en suite
Toilet	yes
Toilet system	electric
Wash basin	yes
Shower	yes



<b>Extra info</b>	2 sleeping places in wheelhouse
<b>Washing machine/dryer combi</b>	Miele

## MACHINERY

<b>No of engines</b>	1
<b>Make</b>	Perkins
<b>Type</b>	M135 6 cyl.
<b>HP</b>	135
<b>kW</b>	99
<b>Fuel</b>	diesel
<b>Year installed</b>	1993
<b>Year of overhaul</b>	2017
<b>Maximum speed (kn)</b>	8 kn.
<b>Cruising speed (kn)</b>	6 kn.
<b>Consumption (l/hr)</b>	8
<b>Range (nm)</b>	3000
<b>Engine hours</b>	161
<b>Engine cooling system</b>	freshwater heat exchanger Intercooler
<b>Drive</b>	shaft
<b>Gearbox</b>	hydraulic PRM gearbox
<b>Bowthruster</b>	hydraulic Hydromat 12 KW
<b>Thrust bearing</b>	Aquadrive
<b>Propeller type</b>	fixed Exalto HS-Aquaprop Nikkel Aluminium brons
<b>Propeller blades</b>	3 26" x 23" EP-3B
<b>Propeller shaft material</b>	stainless steel
<b>Shaft lubrication</b>	grease
<b>Manual bilge pump</b>	In front cabin
<b>Electric bilge pump</b>	24 V in engineroom
<b>Bilge alarm</b>	yes
<b>Electrical installation</b>	12 V, 24 V, 220 V and 360 V.
<b>Generator</b>	wet exhaust Zeise Multipower MPW 15 Listerpetter



<b>Running hours generator</b>	99
<b>Batteries</b>	2016: 12 V and 24 V group
<b>Start battery</b>	6x Optima yellow 55 Ah
<b>Service battery</b>	6x Odyssey PC 1800-FT
<b>Battery charger</b>	1x Victron Energy 12 V - 100 Ah.
<b>Battery charger/inverter</b>	1x Victron Energy Quattro 24 V / 5.000 VA 12- Ah
<b>Shorepower</b>	with cable 220 V and 360 V.
<b>Watermaker</b>	Rochem Roro 0200 ST 01-0025 (capp. 1x 500 L.)
<b>Extra info</b>	Alternator installed on the propeller shaft.

## NAVIGATION

<b>Compass</b>	On bridge
<b>Electric compass</b>	Inside
<b>Depth sounder</b>	VDO
<b>Log</b>	VDO Sumlog
<b>Windset</b>	VDO Ap wind
<b>VHF</b>	1x ICOM IC-M700TY and 1x ICOM Marine IC-M601
<b>Autopilot</b>	Robertson
<b>Radar</b>	Furuno
<b>GPS</b>	AP Navigator MK9 PGSD
<b>Navtex</b>	ICS Nav6
<b>Navigation lights</b>	yes
<b>Searchlight</b>	yes

## EQUIPMENT

<b>Storm blinds</b>	yes
<b>Fixed hardtop</b>	Seperate (new painted in 2018)
<b>Boarding ladder</b>	stainless steel
<b>Deck shower</b>	yes
<b>Anchor</b>	yes
<b>Anchor chain</b>	yes



Windlass	hydraulic Front 2x hydraulic
Windlass aft	hydraulic Lewmar
Deck wash	yes
Dinghy	rigid hull Aluminium
Outboard	2 stroke
Davits	aluminum White
Davits controls	manual
Sea railing	teak Aluminium
Grab rail (superstructure)	aluminium
Railing side opening gates	2x Portside and starboard side
Fenders	8x
Mooring lines	yes
Spare parts	Several
TV	D-Boss
TV receiver	Digitenne KPN
Radio-cd player	Pioneer
DVD player	JVC
Surround Sound System	Canton
Cockpit speakers	2x Pioneer
Clock - barometer	yes

## RIGGING

Rigging	schooner Staysail schooner
Standing rigging	wire Type: Diamond
Brand mast	Proctor Stowaway Rota-Luff
Material mast	aluminium White
Spreaders	2 pair
Keel stepped mast	yes
Mainsail	36.8 m <sup>2</sup> - White
Stoway mast	yes
Cutterstay	yes



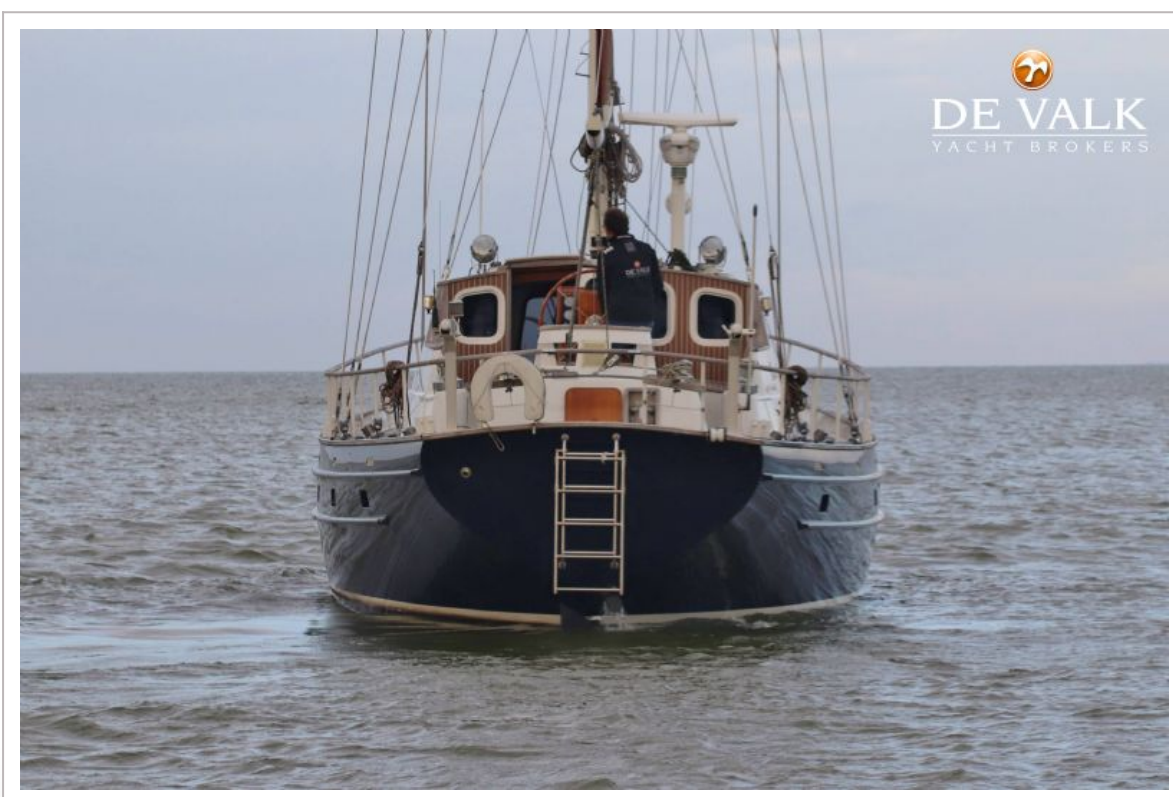


<b>Main staysail</b>	New: 1x 36.2 m <sup>2</sup> - white
<b>Mizzen</b>	1x 41.5 m <sup>2</sup> (brown) and 1x 24.8 m <sup>2</sup> (brown) on furling system
<b>Jib</b>	New: 23 m <sup>2</sup> on furling - brown
<b>Genoa</b>	48.2 m <sup>2</sup> on furling system - brown
<b>Genoa furler</b>	2x
<b>Spinnaker</b>	New: 135 m <sup>2</sup> + snuffer
<b>Staysail furler</b>	yes
<b>Stormjib</b>	New: 8.6 m <sup>2</sup> - white/orange
<b>Self tacking jib installation</b>	yes
<b>Reefing System</b>	main in-mast furling
<b>Backstay adjuster</b>	yes
<b>Boomvang</b>	mechanical Proctor
<b>Primary sheet winch</b>	3x Lewmar 30 st
<b>Secondary sheet winch</b>	2x Lewmar 58 st
<b>Genoa sheetwinches</b>	2x Lewmar 62 st
<b>Halyard winches</b>	2x Lewmar 44
<b>Multifunctional winches</b>	2x Lewmar 40
<b>Extra info</b>	Hydraulic winches: 1x 2000 (stern) and 2x 3000 (front)
<b>Extra info</b>	Running rig replaced in 2018

















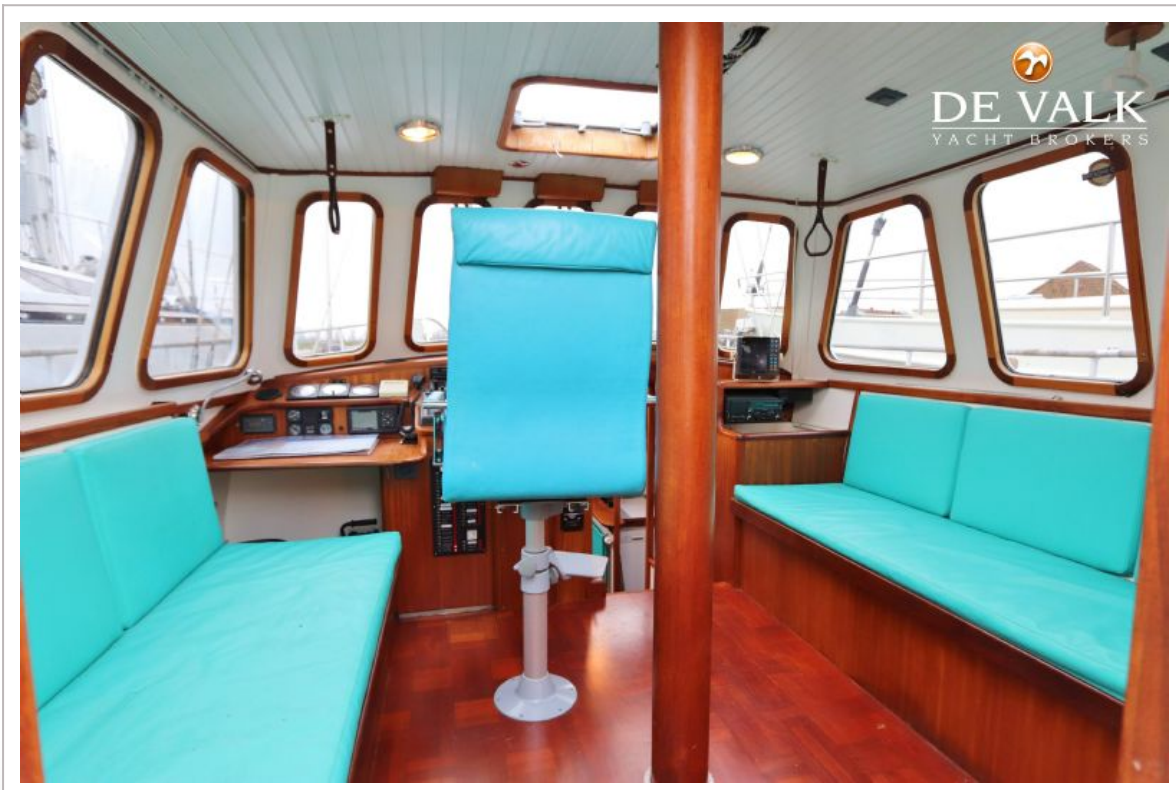
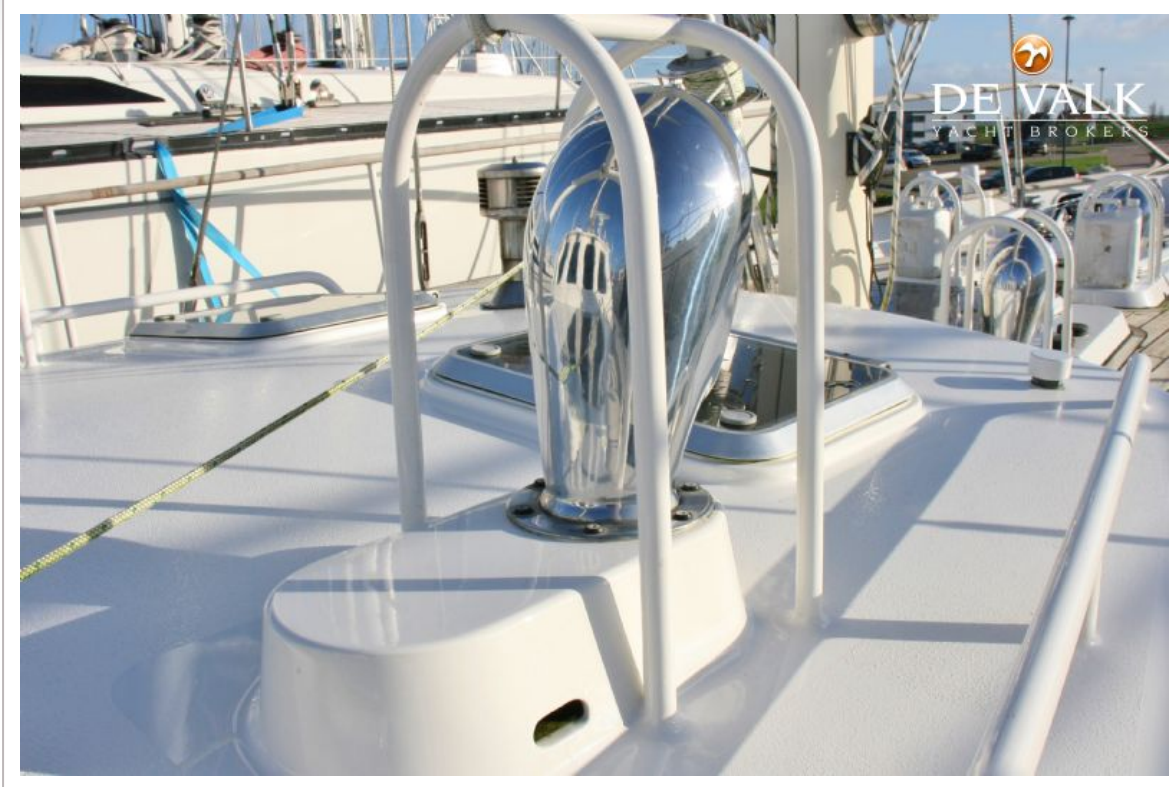


# KOOPMANS 54

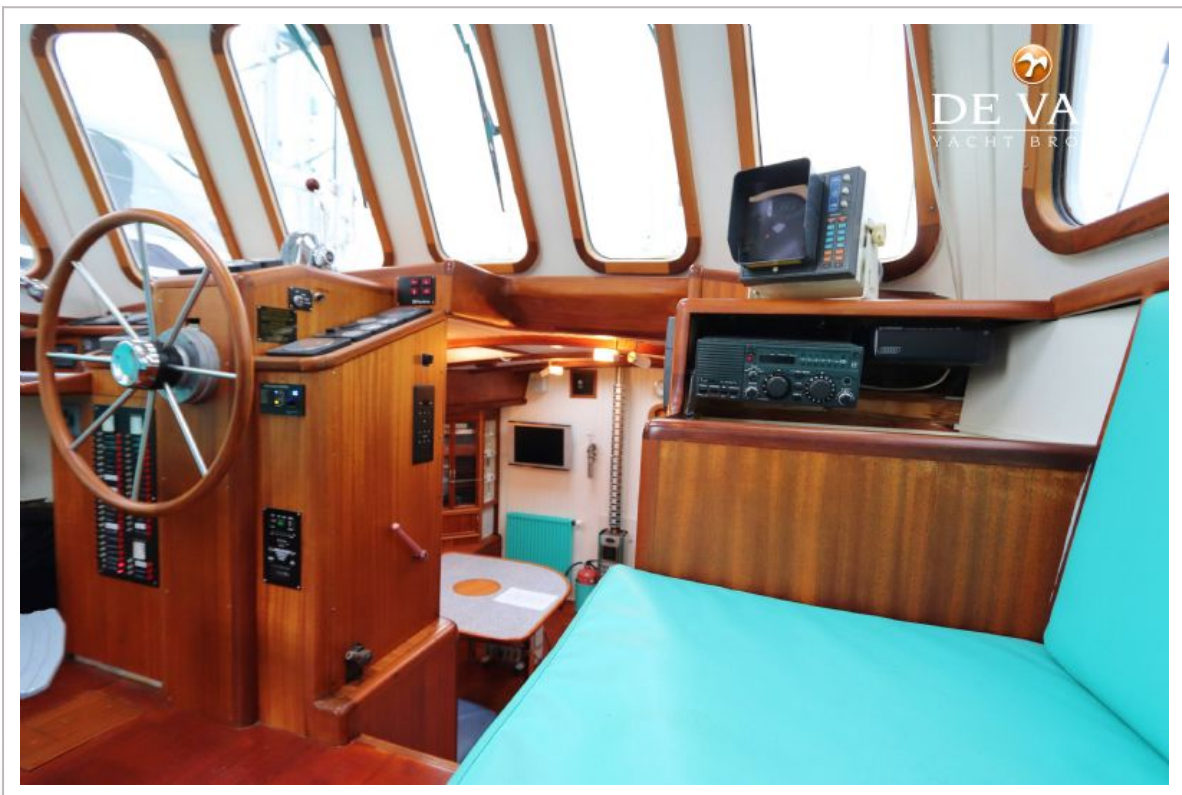
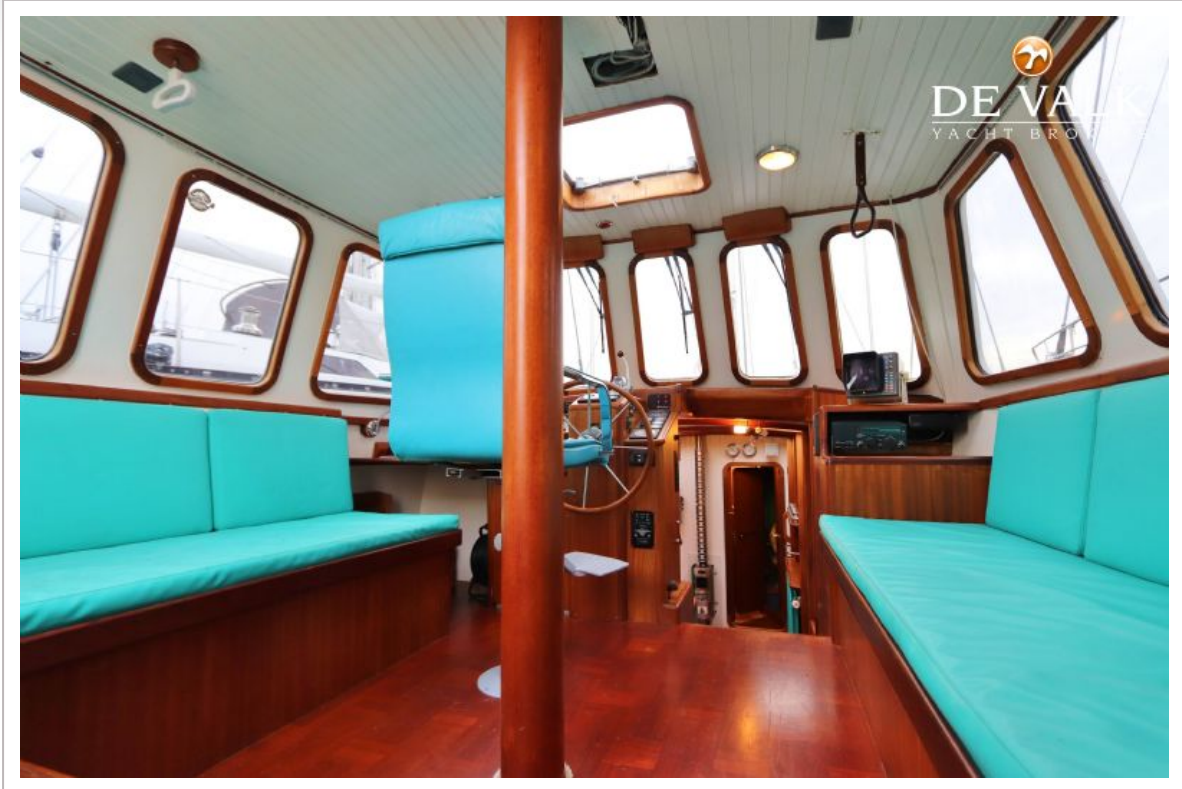




# KOOPMANS 54



# KOOPMANS 54



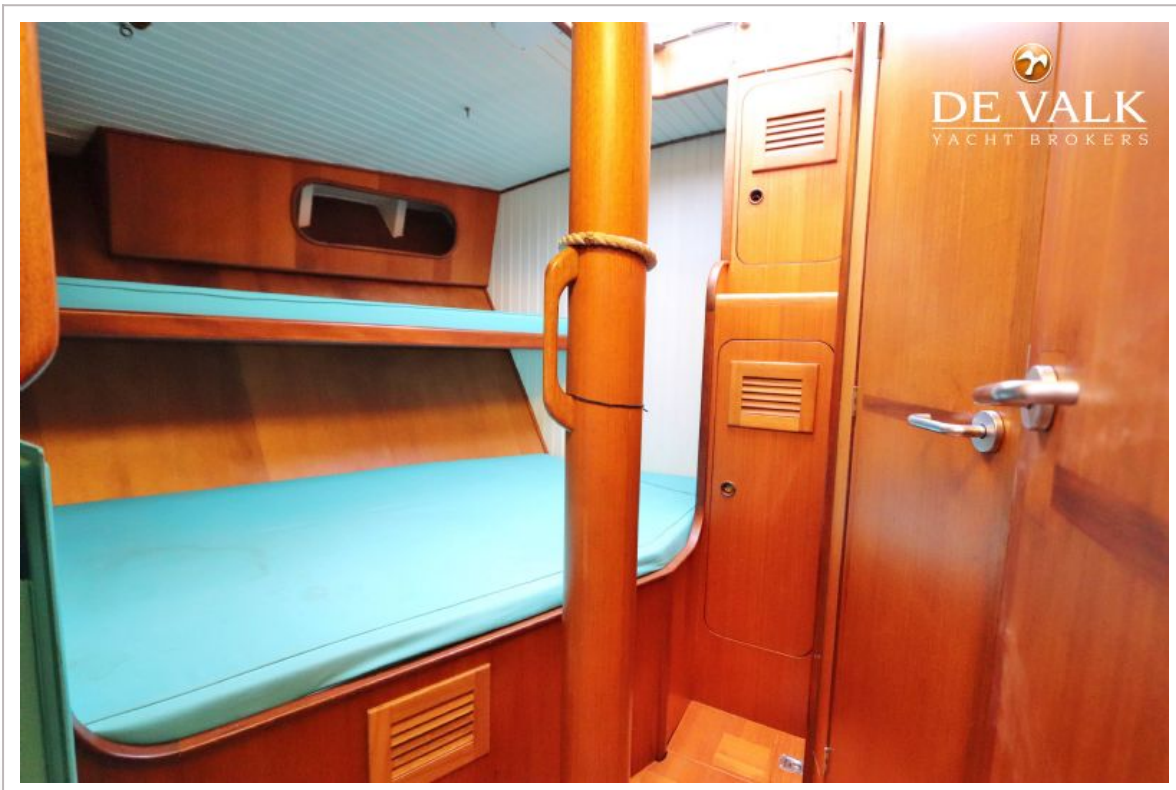
# KOOPMANS 54



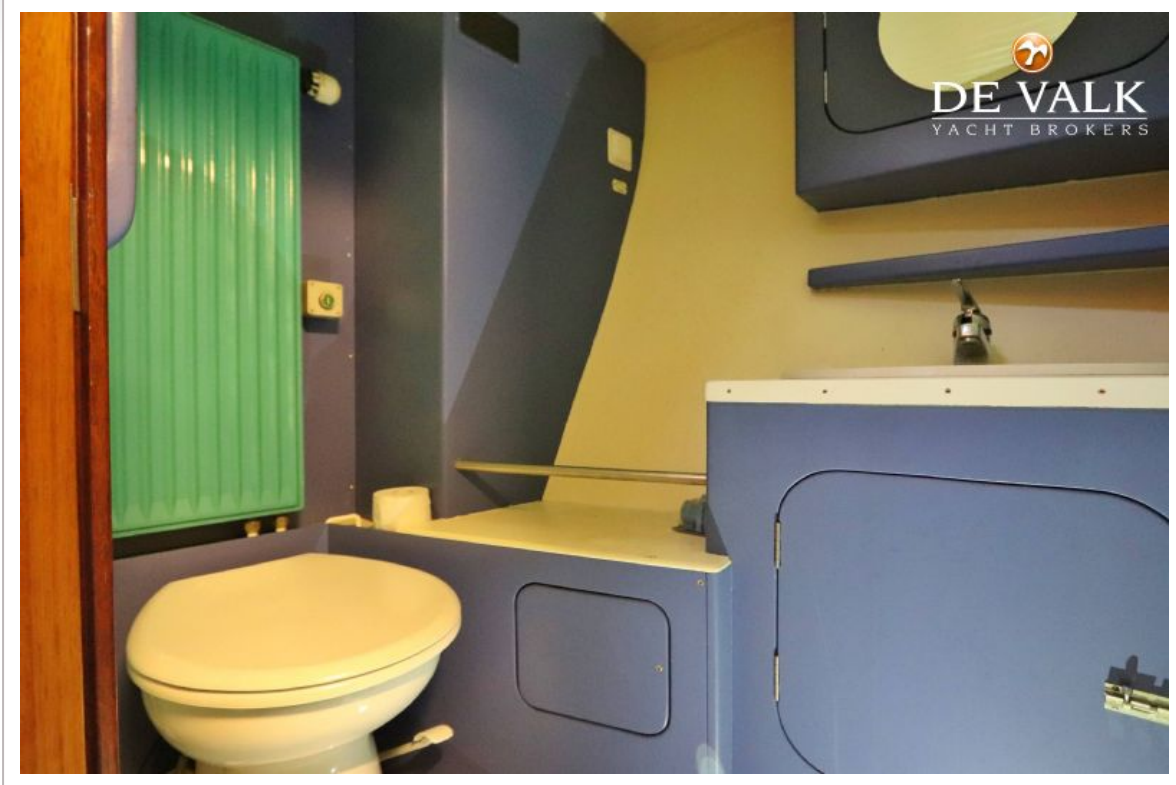
# KOOPMANS 54













# KOOPMANS 54

