



DE VALK
YACHT BROKERS



DOGGERSBANK 1700



DE VALK
YACHT BROKERS

BROKER'S COMMENTS

The design of this Doggersbank is based on the MY1570 and has been extended by Vripack. This has resulted in a unique design with a large aft deck and a very seaworthy hull with very nice sailing characteristics. In the past 5 years, approximately 2000 nm have been sailed annually and trips have been made to, among others: Stockholm, Scilly's, la Rochelle and Finland. This ship has also undergone maintenance and an almost complete refit over the past 4 winters at the builder Kuipers. In short; a seaworthy ship to make long journeys safely and comfortably. Now available for viewing in Sneek.

Pieter Bosma

SPECIFICATIONS

Dimensions	16.75 x 4.85 x 1.50 (m)	Builder	Kuiper Woudsend
Built	1991	Cabins	3
Material	Steel	Berths	6
Engine(s)	1 x Volvo Penta TMD 102 A diesel	Hp/Kw	275.00 (hp), 202.40 (kw)
Asking price	€ 349.000 (VAT Paid)	Lying	at sales office

CONTACT

Sales office	De Valk Sneek	Telephone	+31 515 42 80 30
Address	Zwolsmanweg 7 8606 KC Sneek The Netherlands	E-mail	sneek@devalk.nl

DISCLAIMER

These particulars are given in good faith as supplied but cannot be guaranteed.



GENERAL

Model	DOGGERSBANK 1700
Type	motor yacht
LOA (m)	16,75
LWL (m)	14,72
Beam (m)	4,85
Draft (m)	1,50
Air draft (m)	10,50
Air draft min (m)	4,00
Headroom (m)	2,00
Year built	1991
Builder	Kuiper Woudsend
Country	The Netherlands
Designer	Vripack Yachting International
Displacement (t)	38
Hull material	steel
Hull colour	blue
Hull thickness (mm)	recent measurement report available 6 mm
Hull shape	round-bilged
Keel type	long keel
Superstructure material	steel
Superstructure (mm)	5mm
Rubbing strake	stainless steel
Deck material	steel
Deck finish	teak
Superstructure deck finish	teak
Antifouling (year)	2023
Dorades	Stainless Steel
Window frame	aluminium
Window material	double glazing
Deckhatch	yes



Portholes	stainless steel
Insulation	foam
Mast can be lowered	hydraulic
Fuel tank (litre)	steel 5.000 ltr
Freshwater tank (litre)	stainless steel 1x 1400, 1x 400 ltr
Blackwater tank (litre)	stainless steel 1x 100, 1x 750 ltr
Wheel steering	powersteer
Inside helm position	yes
Outside helm position	yes
More info on hull	underwatership sandblasted 2023
More info on paintwork	repainted 2023
Extra info	2 opening windows in salon
Extra info	mast down sprayhood up 4 meter everything down 3,50m (French proof)
Extra info	CVO certificate available

ACCOMMODATION

Cabins	3
Berths	6
Interior	teak
Floor	teak and holly Deels/parly carpet and
Aft deck	yes
Saloon	yes
Headroom saloon (m)	2.00 m
Heating	central heating Webasto Thermo SG1553
Air-conditioning	reverse cycle airco Condaria (out of order)
Chart table	yes
Aft Cabin	yes
Dinette	yes
Opening door to aft deck	Teak
Galley	yes



Countertop	corian
Sink	Dubbel/double
Cooker	ceramic Miele 4 burner
Microwave/oven combi	AEG (2022)
Fridge	Etna KK0682 (2023)
Freezer	mounted in utility room AEG 4 drawer (2023)
Hot water system	220V Boiler 115 Liter Rheinstrom
Water pressure system	electrical Exalto with separate water filter (2022)
Crockery	yes
Owners cabin	French bed
Bed length (m)	2.00 m.
Wardrobe	hanging and drawers
Bathroom	en suite
Toilet	en suite
Toilet system	electric
Wash basin	in the bathroom
Shower	en suite
Guest cabin 1	double bed
Bed length (m)	2.00
Wardrobe	shelves
Bathroom	shared
Toilet	shared
Toilet system	electric
Wash basin	in the bathroom Corian
Shower	shared
Guest cabin 2	bunk bed
Bed length (m)	2.00
Wardrobe	shelves
Bathroom	shared
Washing machine	Bauknecht W890L



Extra info

The layout of this Doggersbank is strikingly different, by placing a double aft cabin in the stern and the owner's cabin in the bow. From the cosy salon et view outside, access to the spacious kitchen with dinette and pantry. The owner's cabin has a private bathroom, while the guest cabins aft share a bathroom.

Extra info

upholstery and carpets renewed in 2022

MACHINERY

No of engines	1
Make	Volvo Penta
Type	TMD 102 A
HP	275
kW	202.40
Fuel	diesel
Year installed	1991
Engine hours	7000
Engine cooling system	freshwater heat exchanger
Drive	shaft
Shaft seal	yes
Engine controls	bowden cable
Gearbox	Twin Disc MG5091
Engine controls	bowden cable
Homer	extra gearbox, propshaft and folding prop mounted on the Westerbeke generator
Bowthruster	hydraulic 15 Kw
Exhaust	watercooled
Thrust bearing	yes
Propeller type	fixed
Propeller blades	spare prop on board 4
Propeller shaft material	stainless steel
Shaft lubrication	oilbath
Manual bilge pump	yes



Electric bilge pump	yes
Electrical installation	12/24/220V
Generator	wet exhaust Westerbeke1500 RPM 20KW
Batteries	yes
Start battery	2x 120 Ah Sonnenschein (2023)
Service battery	Gel 6x 250 Ah (2021) Cyclic
Generator battery	1x 120 Ah Sonnenschein (2023)
Battery monitor	yes
Battery charger	Victron Skylla-1 24-80 (2019)
Inverter	Victron Phoenix 24-5000 (2019)
Shorepower	with cable
Insulation transformer	7000 Va
Stabilizers	fin Koop Nautic Searocq
Extra info	Spacious engine room with the well-known Kuipers Woudsend finish. On the main engine there is a PTO for the hydraulics, but on the generator there is also a PTO with hydraulics and a gearbox with propeller shaft as a "homecoming" with a fully functioning backup system.
Extra info	Professionally maintained by Kuipers Woudsend over the past 4 years, many things have been preventively replaced and improved.
Extra info	in 2021 Hydraulic system checked, 36 hoses preventively replaced, New swimming ladder made to measure, 6 service batteries and 2 starter batteries renewed in 2023, 12V/250AH Halogen spotlights replaced by LED spotlights. Entire electrical installation checked and partly renewed. New inverter and new charger. New plotters and autopilot. New Webasto heating, new drinking water pump and pressure vessel, new upholstery and floor covering in 2023. Hull, underwater hull and superstructure painted and varnished in 2023.

NAVIGATION

Compass	Sestrel Moore
Electric compass	Autohelm (in and outside)
Multi control display	Autohelm (outside)



Depth sounder	Autohelm (inside)
Log	Autohelm (inside)
Windset	Autohelm(inside)
VHF	Furuno HS 2721 (in and outside) Sailor RT2048 (inside)
Autopilot	including Joystick steering Garmin (in and outside) (2020)
Rudder angle indicator	in the autopilot
Radar	Furuno (inside)
Plotter/GPS	Simrad DS33 (in and outside) + Garmin plotter outside (2020)
AIS transceiver	yes
Camera	(2020)
Navigation lights	yes
Loudhailer	Monacor
Extra info	Marble CSI alarm system for main funktions (2020)
Extra info	No gas on board

EQUIPMENT

Fixed windscreen	yes
Sprayhood	2022
Bimini	2022
Cockpit cushions	yes
Cockpit table	yes
Cockpit chairs	yes
Bathing platform	yes
Boarding ladder	stainless steel
Transom door	yes
Bow ladder	yes
Deck shower	yes
Anchor	CQR Plough
Anchor chain	yes
Windlass	hydraulic
Deck wash	yes



Dinghy	Zodiac Cadet 330L alu
Outboard	Yamaha 9.9 JMH
Davits	stainless steel Simpson
Davits controls	manual
Sea railing	stainless steel With teakrail around aftdeck
Grab rail (superstructure)	teak
Railing side opening gates	yes
Life raft	container RFD
Life raft (pers)	6
Danbuoy	2x
Wiper	3x on the outside steering position 4x on the inside steering position
Clearview window	on the inside steering position
Horn	air pressure
Fenders	yes
Mooring lines	yes
Tools	yes
Radio-cd player	Kenwood
Speakers in salon	yes
Clock - barometer	Schatz
Fire extinguisher	yes
Extinguisher in engine room	Halon 1301
Extra info	her present owner made some beautiful trips in the last year among other to: Finland, Stockholm, Bretagne/la Rochelle and surroundings, Scilly's, and the rivers in België and the Netherlands

RIGGING

Rigging	yes
Material mast	aluminium
Spreaders	yes
Mast lowering system	hydraulic



Halyard winches

yes

Extra info

stabilising sail



DOGGERSBANK 1700



DOGGERSBANK 1700



DOGGERSBANK 1700



DOGGERSBANK 1700



DOGGERSBANK 1700



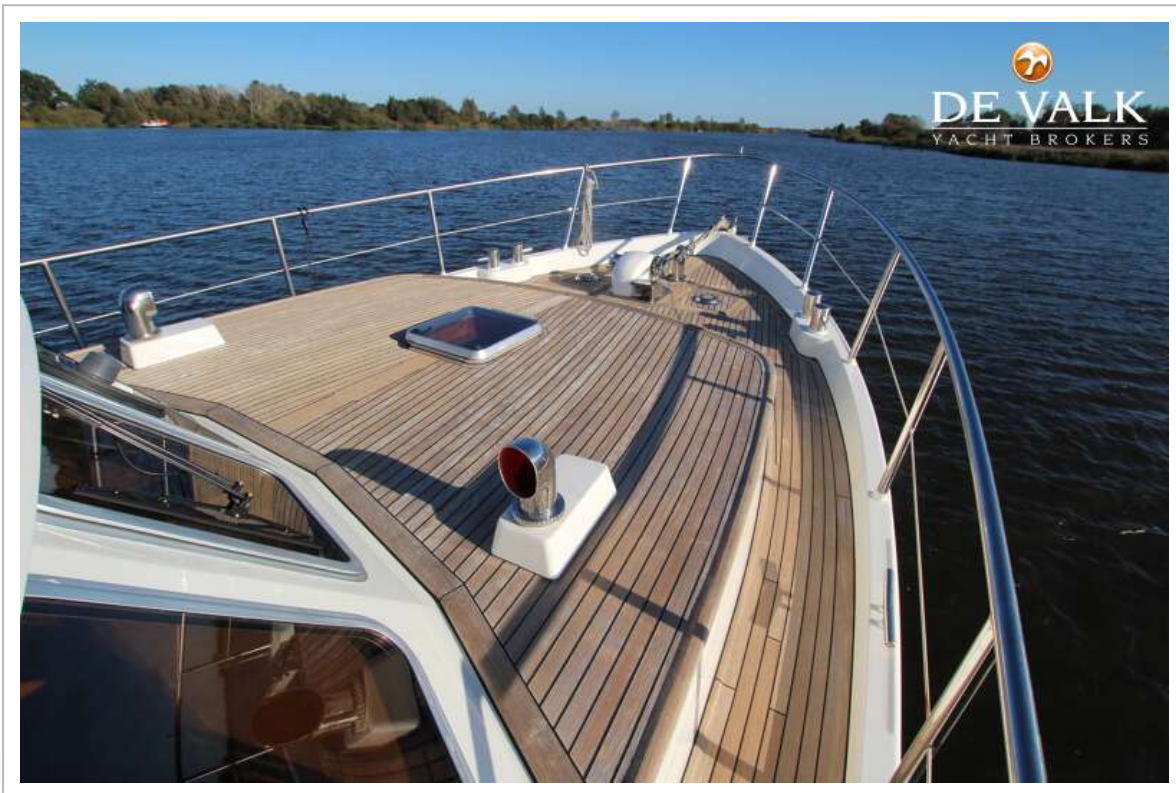
DOGGERSBANK 1700



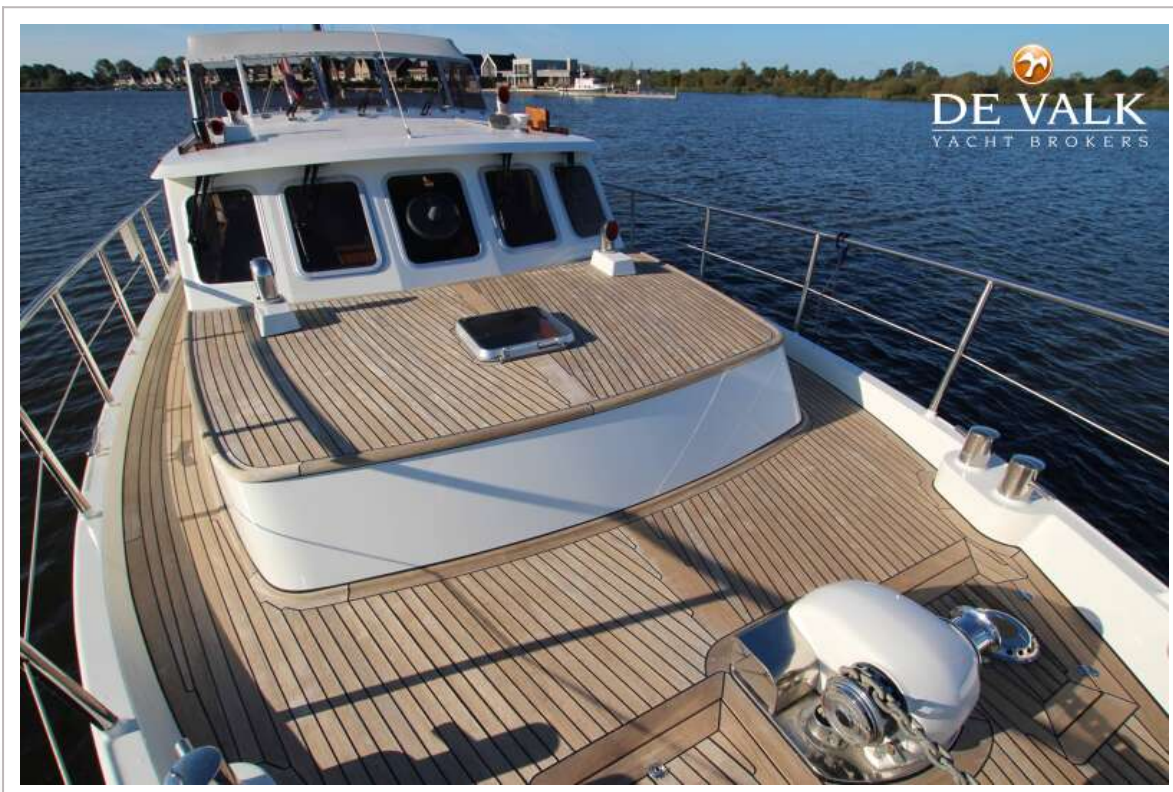
DOGGERSBANK 1700



DOGGERSBANK 1700



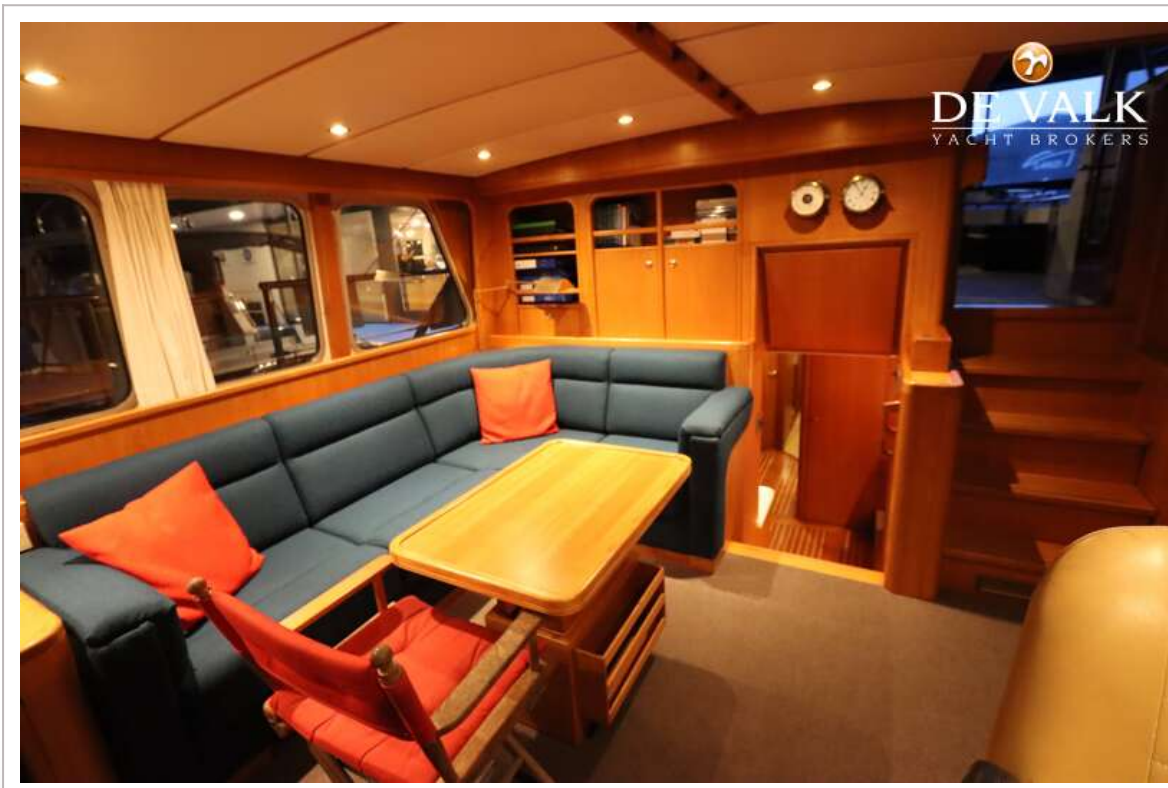
DOGGERSBANK 1700



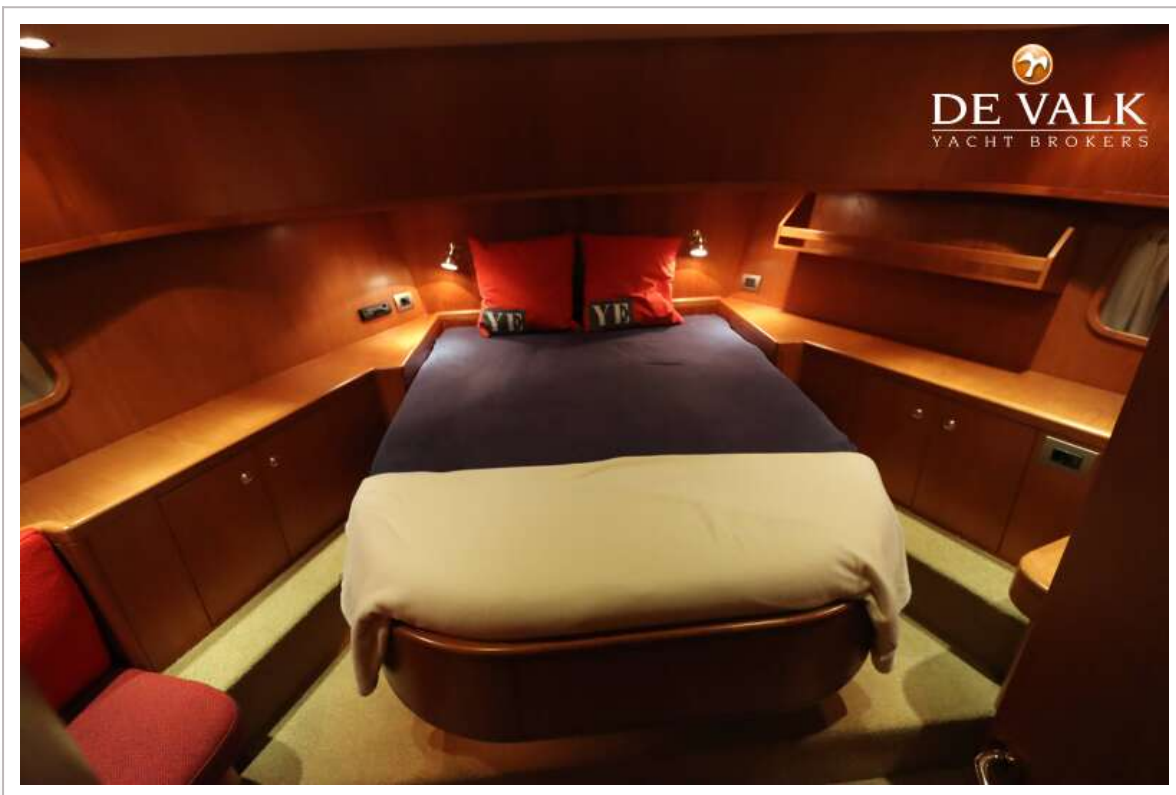
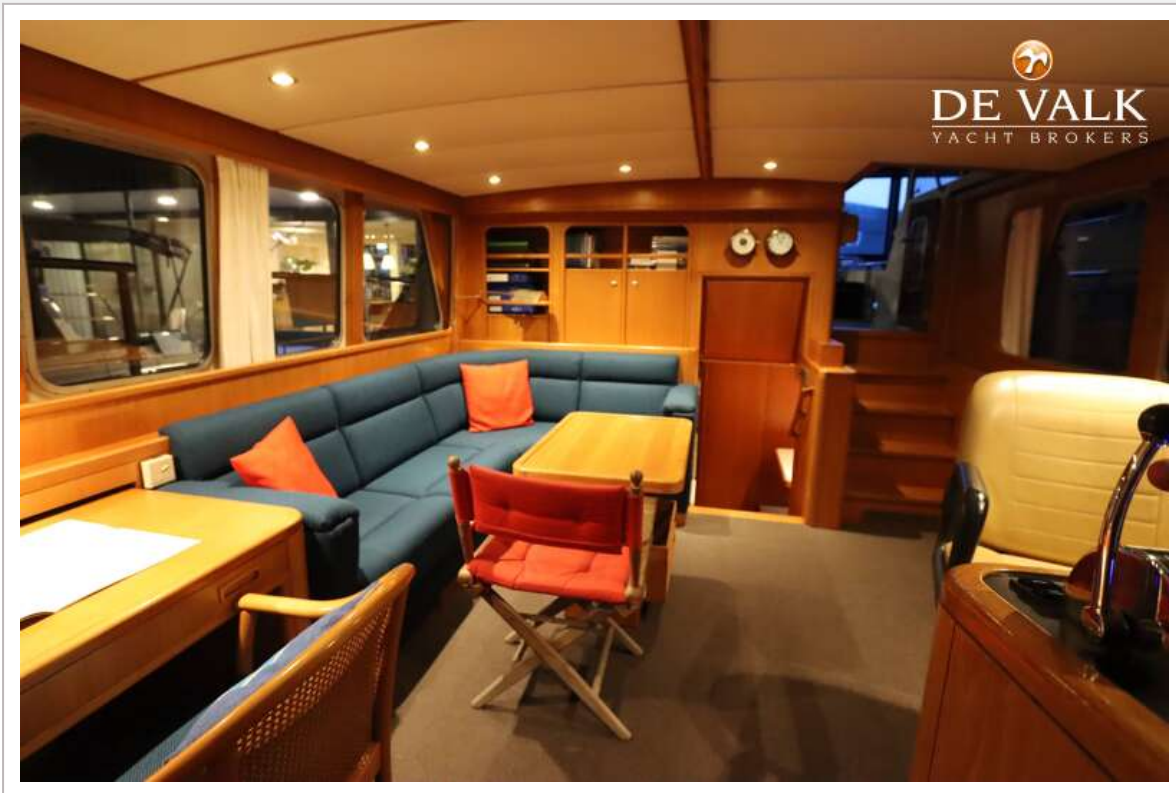
DOGGERSBANK 1700



DOGGERSBANK 1700



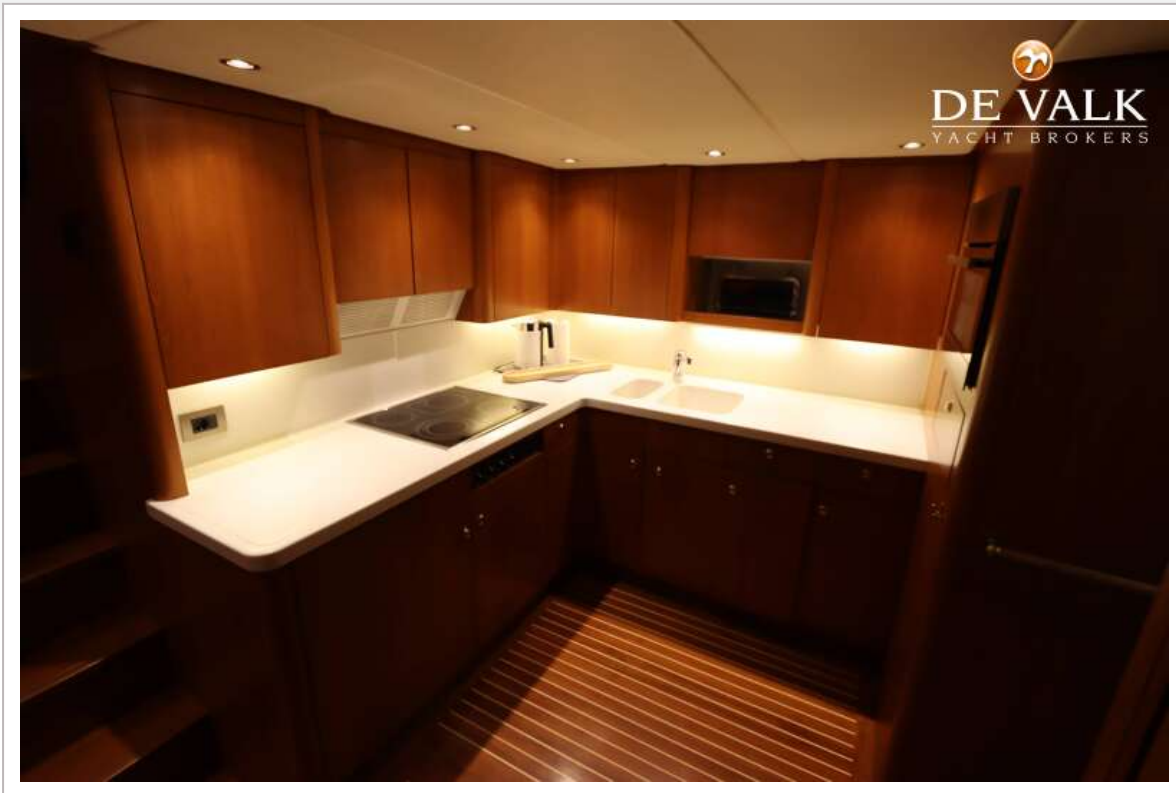
DOGGERSBANK 1700



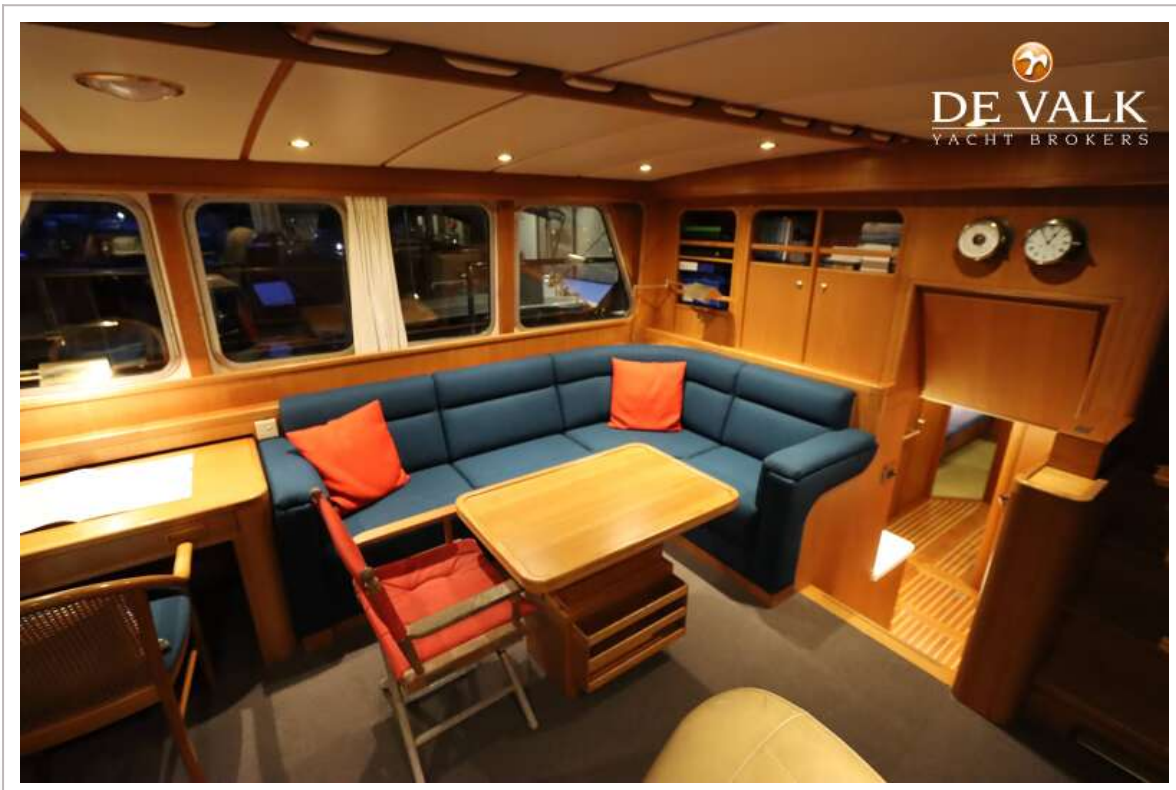
DOGGERSBANK 1700



DOGGERSBANK 1700



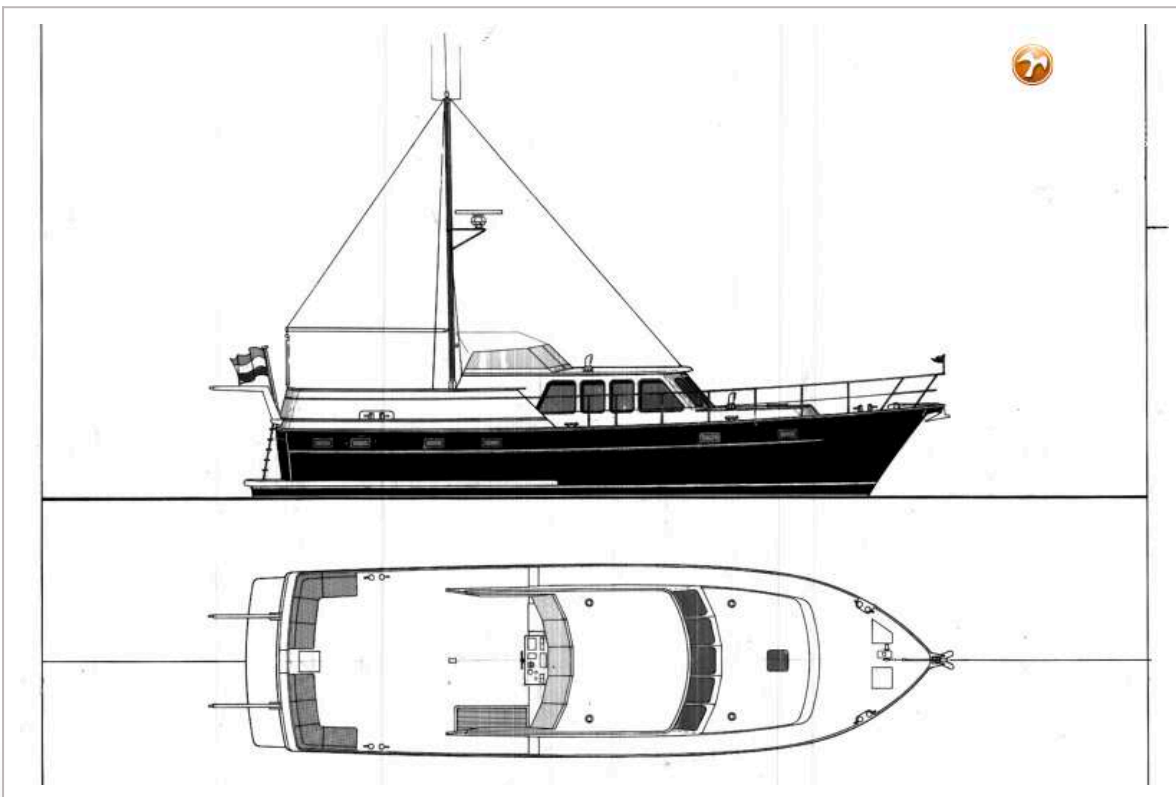
DOGGERSBANK 1700



DOGGERSBANK 1700



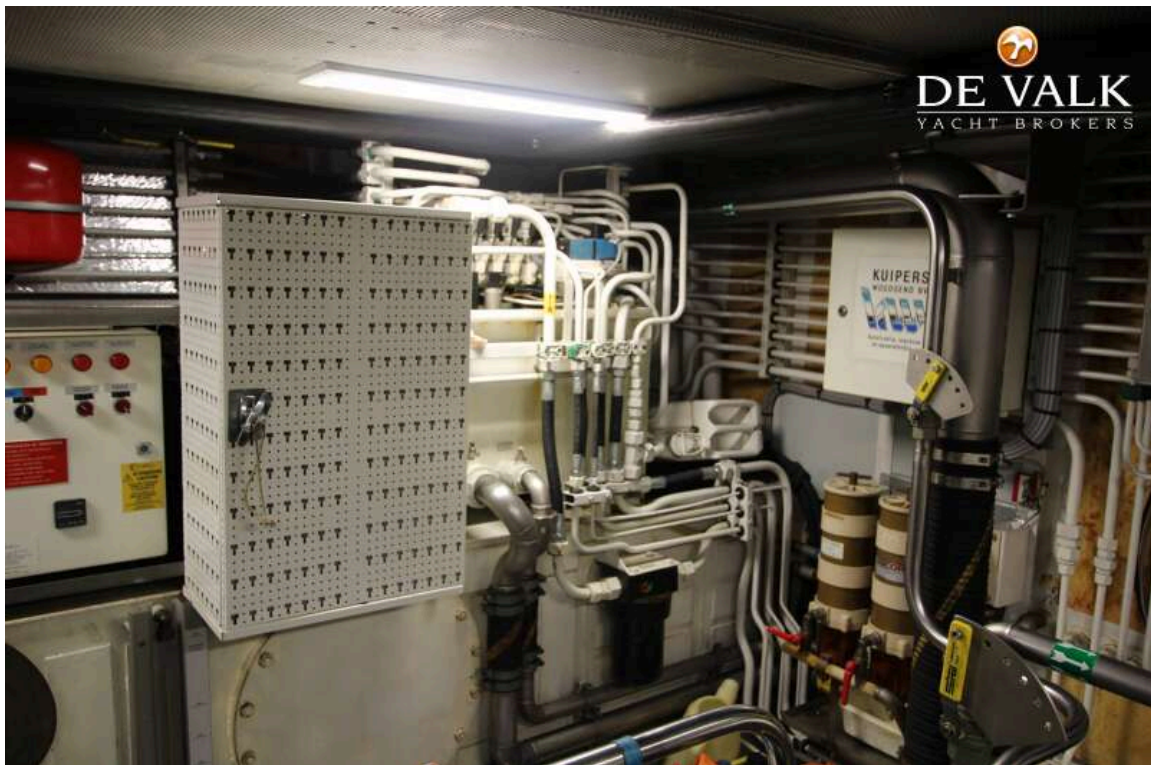
DOGGERSBANK 1700





Doggersbank 1570 MY tijdens de eerste proefvaart


Januari 1990 - **Mans van Klaveren** geeft Vripack opdracht voor het ontwerp van een Doggersbank 1570 MY met een lengte o.a. van 16,75 m. De opdracht verloopt op dezelfde wijze als het jacht van de heer ~~Menken~~. Beide jachten worden gelijktijdig gebouwd bij dezelfde vier individuele partners van Doggersbank Jachtbouw B.V. De beide jachten zullen na de oplevering veel samen opvaren.




DE VALK
YACHT BROKERS



DOGGERSBANK 1700

