



DE VALK
YACHT BROKERS



GLACER 40



DE VALK
YACHT BROKERS

GLACER 40

BROKER'S COMMENTS

This well maintained Glacier 40 is a unique yacht model with a retractable keel, which is a standout feature for sailors looking for versatile draft options ideal for shallow waters and docking flexibility. This design allows for ease in both cruising and exploring coastal or shallow regions without sacrificing performance in deeper waters. Overall, this combination of a retractable keel and a stainless steel superstructure suggests the Glacier 40 is designed for both style and function, catering to sailors who prioritize versatility and low-maintenance resilience in their yacht's design.

Hans Visser

SPECIFICATIONS

Dimensions	12.00 x 3.80 x 1,10 / 2.20 (m)	Builder	CB Yachtbau
Built	1995	Cabins	3
Material	Steel	Berths	6
Engine(s)	1 x Ford Lehmann 2712E diesel	Hp/Kw	85.00 (hp), 62.56 (kw)
Asking price	€ 129.000 (VAT Paid)	Lying	contact Hindeloopen

CONTACT

Sales office	De Valk Hindeloopen	Telephone	+31 514 52 40 00
Address	Oosterstrand 1 8713 JS Hindeloopen The Netherlands	E-mail	hindeloopen@devalk.nl

DISCLAIMER

These particulars are given in good faith as supplied but cannot be guaranteed.



GENERAL

Model	GLACER 40
Type	sailing yacht
LOA (m)	12,00
Beam (m)	3,80
Draft (m)	2,20
Draft min (m)	1,10
Air draft (m)	17,00
Headroom (m)	1,90
Year built	1995
Builder	CB Yachtbau
Country	Poland
Designer	Horst Glacer
Displacement (t)	15
CE norm	NA
Hull material	steel
Hull colour	blue
Hull thickness (mm)	5mm
Hull shape	round-bilged
Keel type	centreboard
Superstructure material	stainless steel
Rubbing strake	stainless steel
Deck material	stainless steel
Deck finish	non-skid paint
Superstructure deck finish	teak
Cockpit deck finish	teak
Antifouling (year)	Hull underwater new system 2023 incl antifoul.
Dorades	2
Window frame	aluminium
Window material	tempered glass
Deckhatch	2 x



GLACER 40

Portholes	yes
Insulation	glasswool
Fuel tank (litre)	steel 1200
Level indicator (fuel tank)	yes
Freshwater tank (litre)	stainless steel 800
Level indicator (freshwater)	yes
Blackwater tank (litre)	steel 300
Blackwater tank extraction	pump
Greywater tank (litre)	See black water
Wheel steering	hydraulic
Inside helm position	yes
Outside helm position	hydraulic
Emergency tiller	yes
More info on paintwork	Hull and deck repainted 2023

ACCOMMODATION

Cabins	3
Berths	6
Interior	teak
Layout	yes
Floor	parquet
Pilot house/deck saloon	yes
Headroom saloon (m)	1,90
Heating	calorgas ducted hot air Trumatic, needs to be serviced..
Navigation center	yes
Chart table	yes
Aft Cabin	yes
Galley	L shaped
Countertop	corian
Sink	stainless steel
Cooker	calor gas 3 burner



GLACER 40

Oven	yes
Fridge	yes
Hot water system	220V + engine
Water pressure system	electrical
Owners cabin	v-bed
Bed length (m)	2.0
Wardrobe	hanging and shelves
Bathroom	shared
Toilet	shared
Toilet system	electric
Wash basin	in the bathroom
Shower	shared
Guest cabin 1	double bed
Bed length (m)	2.0
Wardrobe	hanging and shelves
Guest cabin 2	single bed
Bed length (m)	2.0
Wardrobe	hanging and shelves

MACHINERY

No of engines	1
Make	Ford Lehmann
Type	2712E
HP	85
kW	62.56
Fuel	diesel
Year installed	1995
Maximum speed (kn)	7
Cruising speed (kn)	6
Consumption (l/hr)	3,5
Engine hours	1353



GLACER 40

Engine cooling system	closed keelcooling
Drive	shaft
Shaft seal	Grease
Engine controls	bowden cable
Gearbox	hydraulic
Bowthruster	electric
Exhaust	dry
Propeller type	fixed
Propeller blades	3
Propeller shaft material	stainless steel
Shaft lubrication	grease
Manual bilge pump	yes
Electric bilge pump	yes
Electrical installation	12 V DC and 220 V AC
Generator	dry exhaust Fischer Panda
Running hours generator	185,7
Batteries	5
Start battery	1
Service battery	2
Bowthruster battery	2
Battery monitor	yes
Battery charger	Studer 6A Mastervolt Chargemaster 24/12-3 Mastervolt 12/25-3
Shorepower	with cable

NAVIGATION

Compass	Plastimo
Depth sounder	Raytheon ST60
Log	Raytheon ST 60 needs service
Windset	Raytheon ST 60 needs new topunit
VHF	Sailor RT 2047
Autopilot	Raytheon ST 6000+ Needs service



GPS	yes
Navigation lights	yes

EQUIPMENT

Sprayhood	2 parts
Cockpit cover	3 parts
Sun awning	yes
Winter cover	yes
Cockpit table	Teak
Bathing platform	Steel
Boarding ladder	stainless steel
Deck shower	yes
Anchor	CQR Plough
Anchor chain	yes
Windlass	electrical Reckmann
Sea railing	stainless steel Solid
Grab rail (superstructure)	yes
Pushpit	yes
Pulpit	yes
Fenders	yes
Mooring lines	yes
Spare parts	Some
Tools	Some

RIGGING

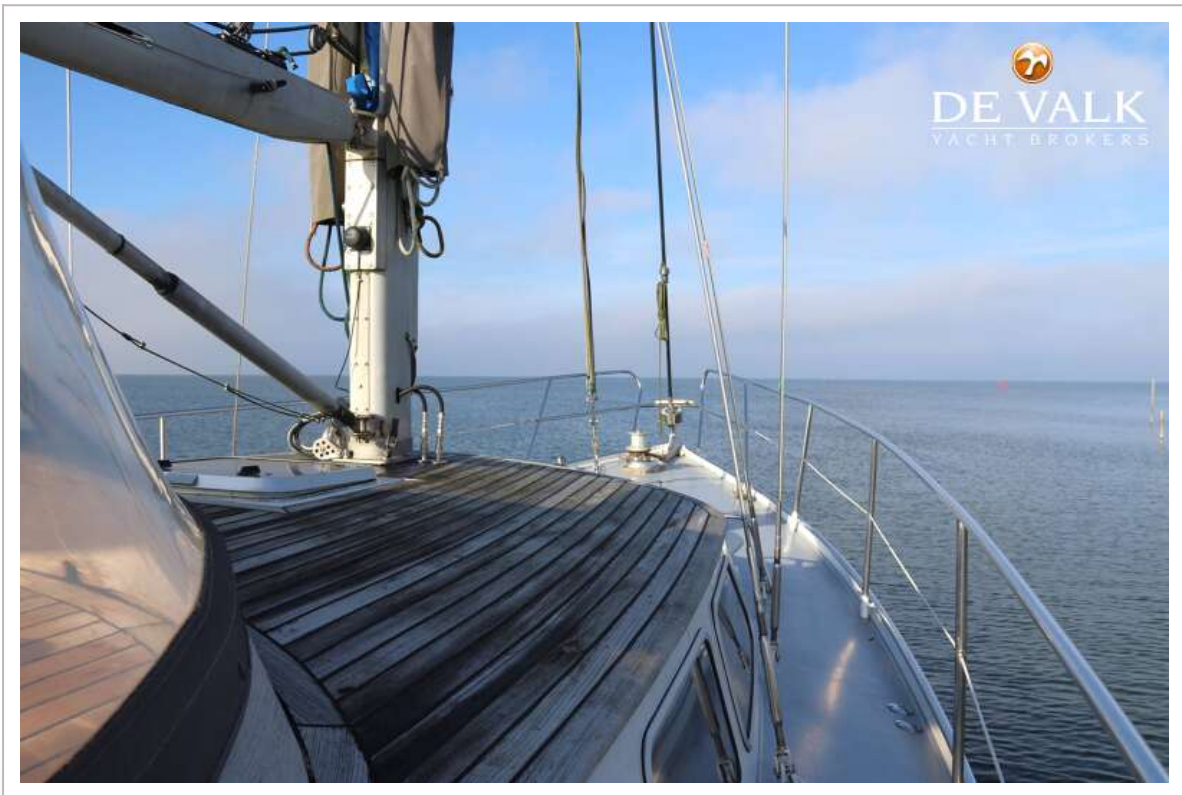
Rigging	sloop
Standing rigging	wire
Brand mast	Reckmann
Material mast	aluminium
Spreaders	2 sets
Mainsail	Kary, dacron, has to be replaced.



Stoway mast	Reckmann Hydraulic
Genoa	Dacron, has to be replaced.
Genoa furler	Reckmann
Gennaker	yes
Booster	yes
Stormjib	yes
Reefing System	main in-mast furling
Backstay adjuster	yes
Boomvang	gasspring
Primary sheet winch	2 x Lewmar ST46 2sp
Genoa sheetwinches	2 x Lewmar ST40 2sp
Halyard winches	2 x Lewmar ST on the mast
Multifunctional winches	halyard/sheet winches 2 x Lewmar 16ST
Gennaker pole	aluminium



GLACER 40



GLACER 40



GLACER 40



GLACER 40



GLACER 40



GLACER 40



GLACER 40



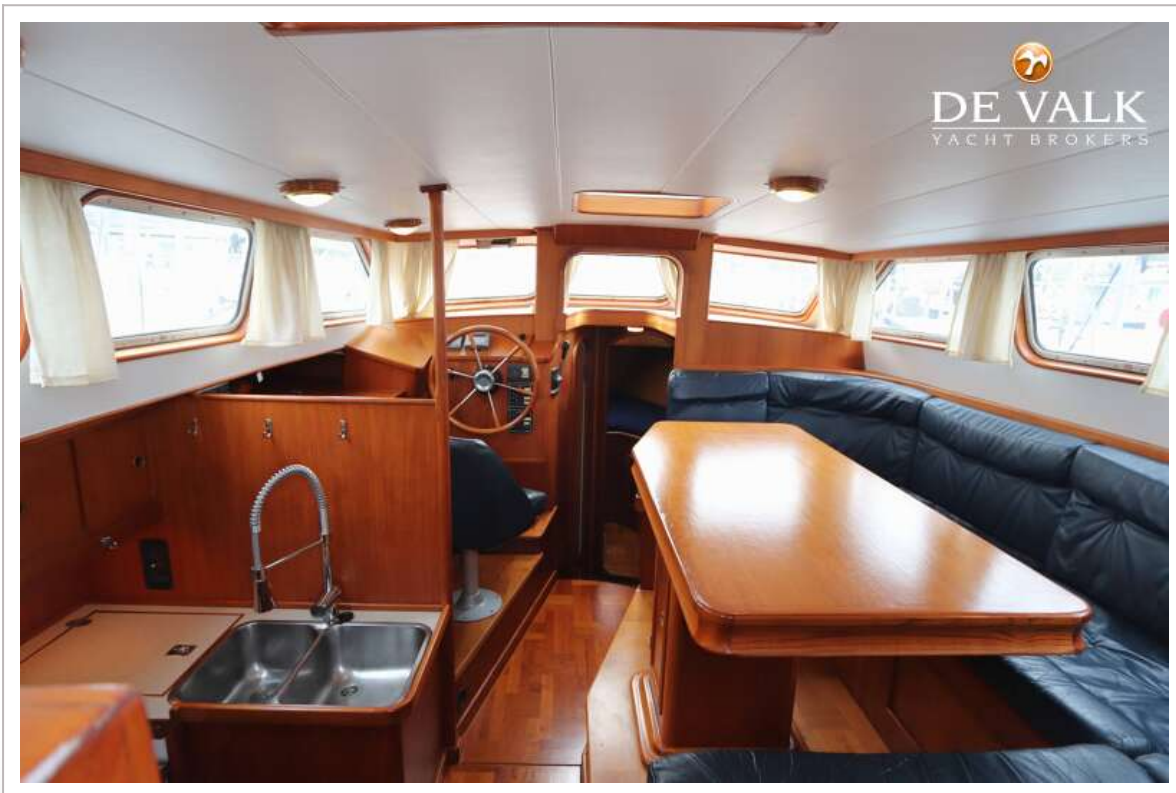
GLACER 40



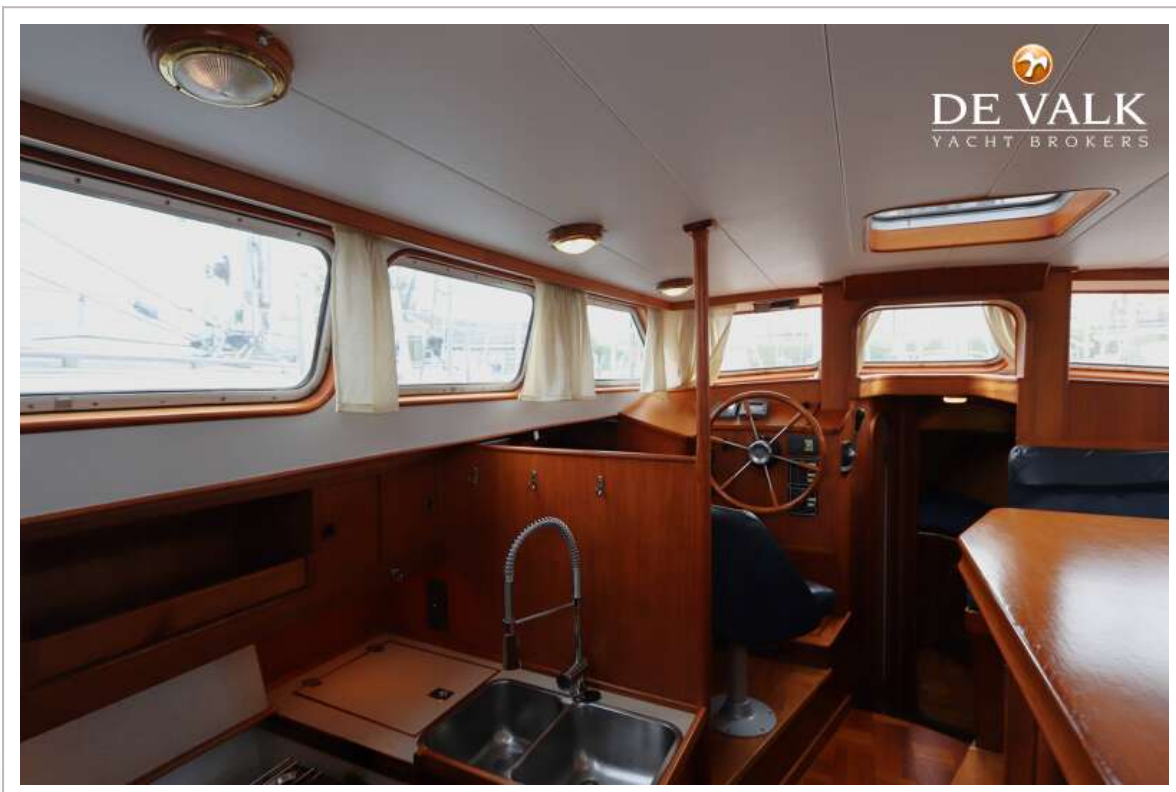
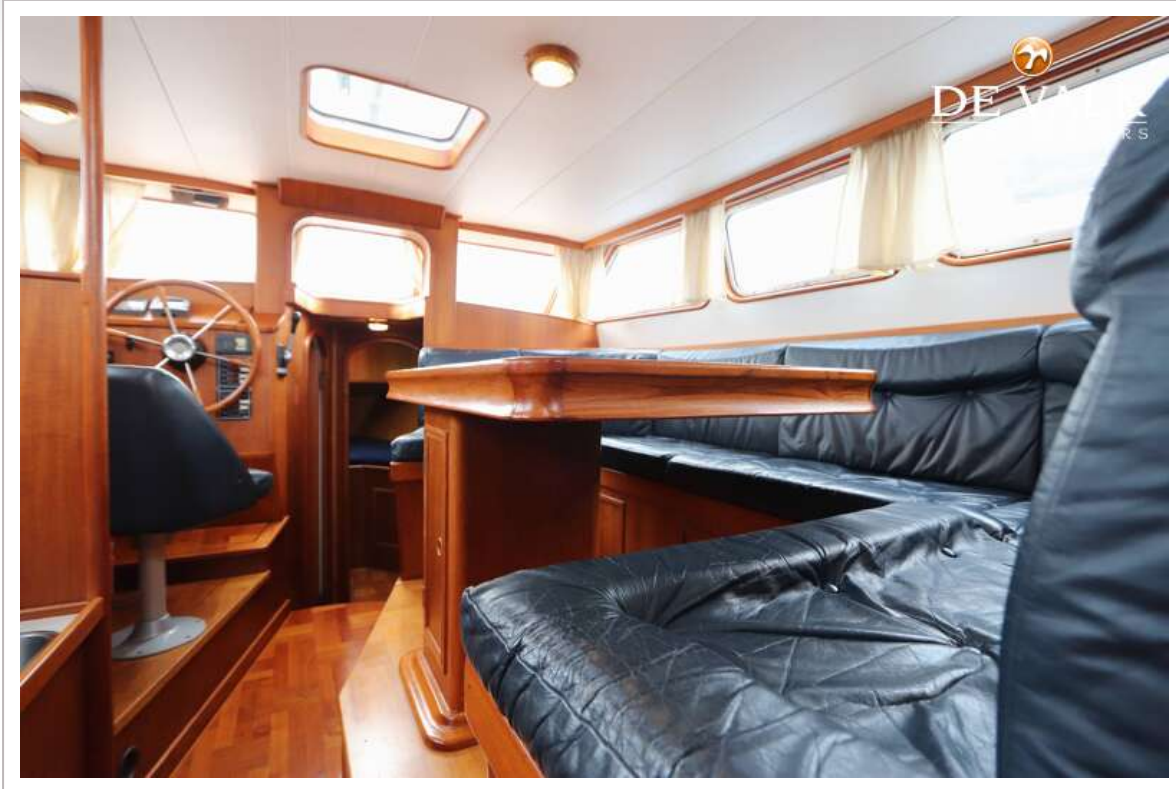
GLACER 40



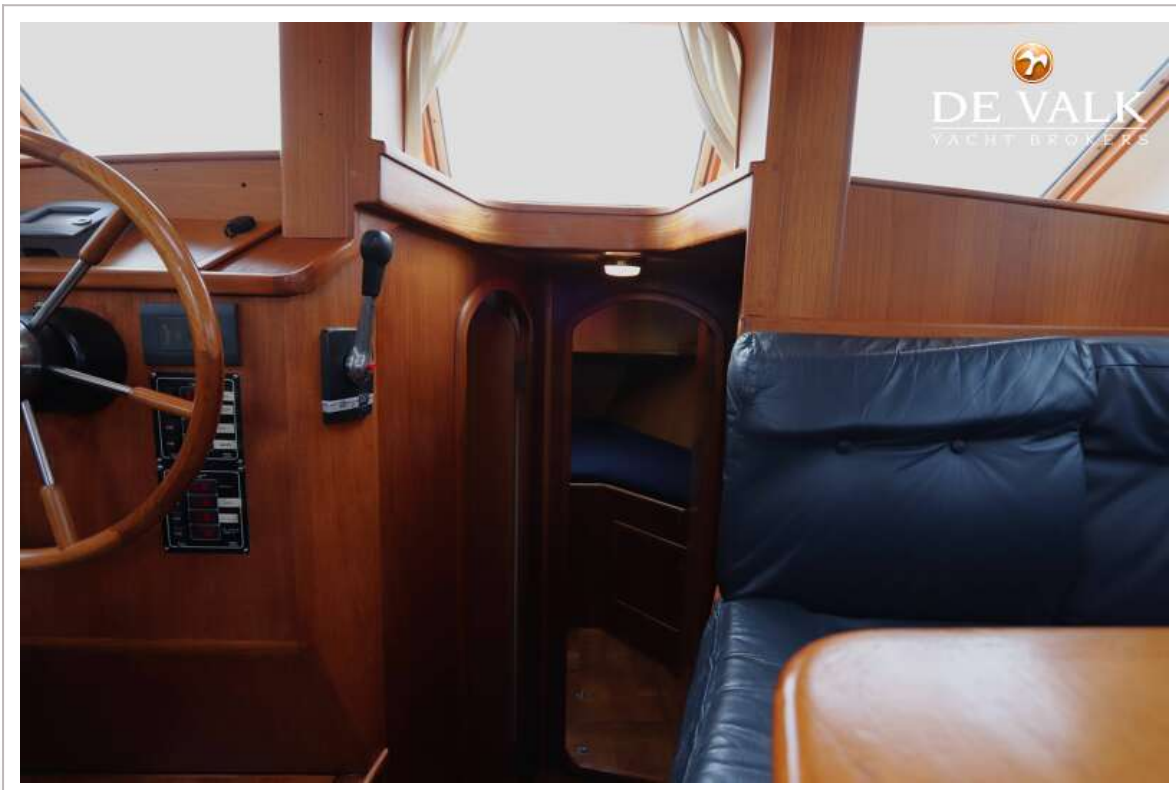
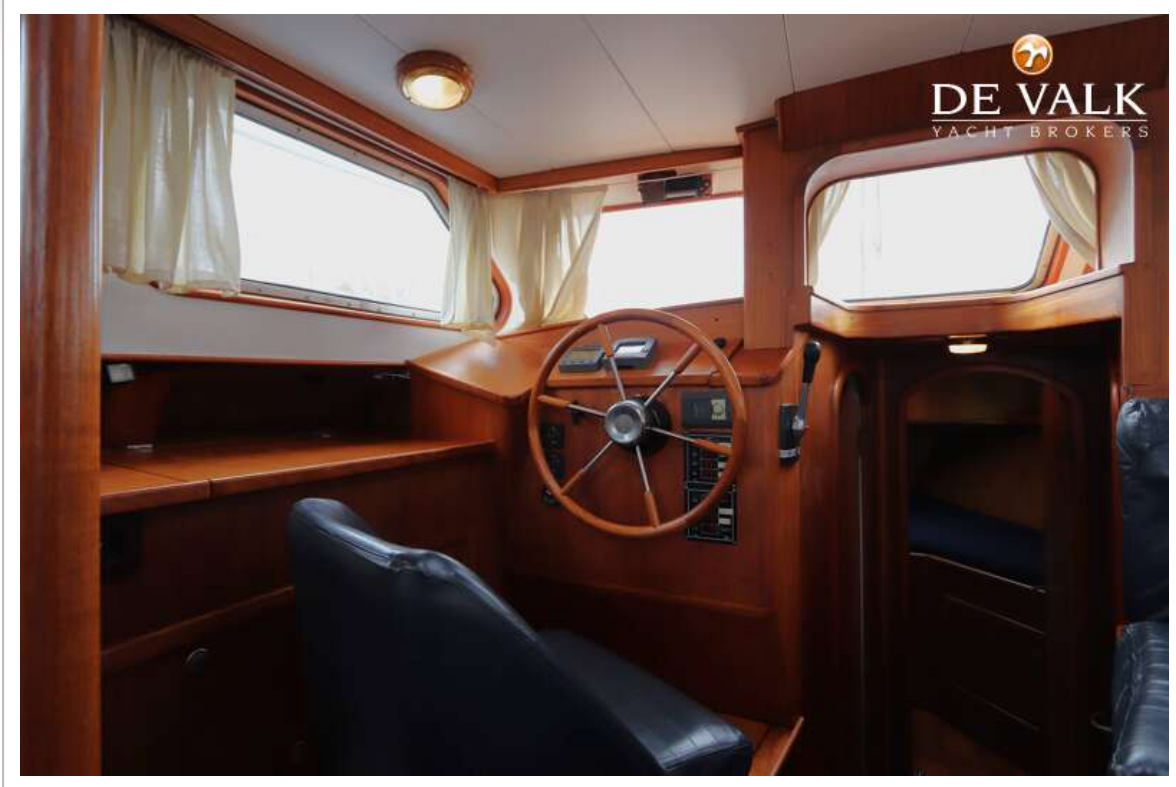
GLACER 40



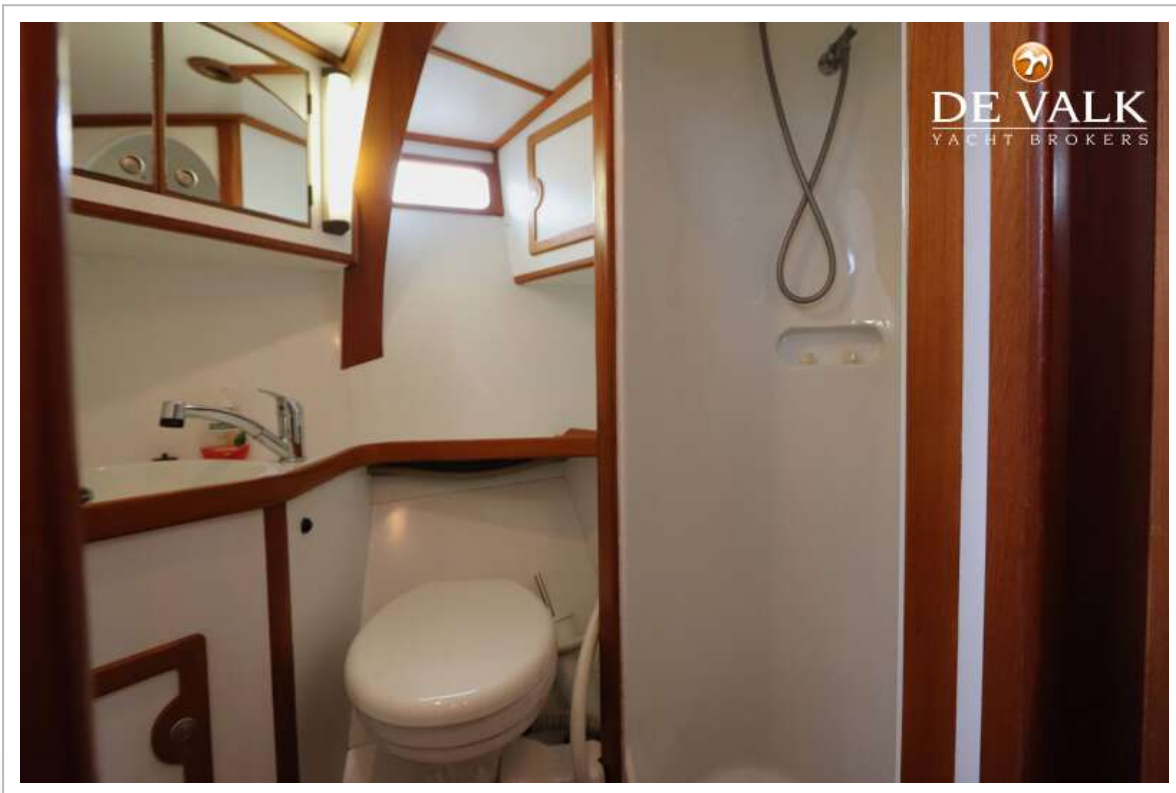
GLACER 40



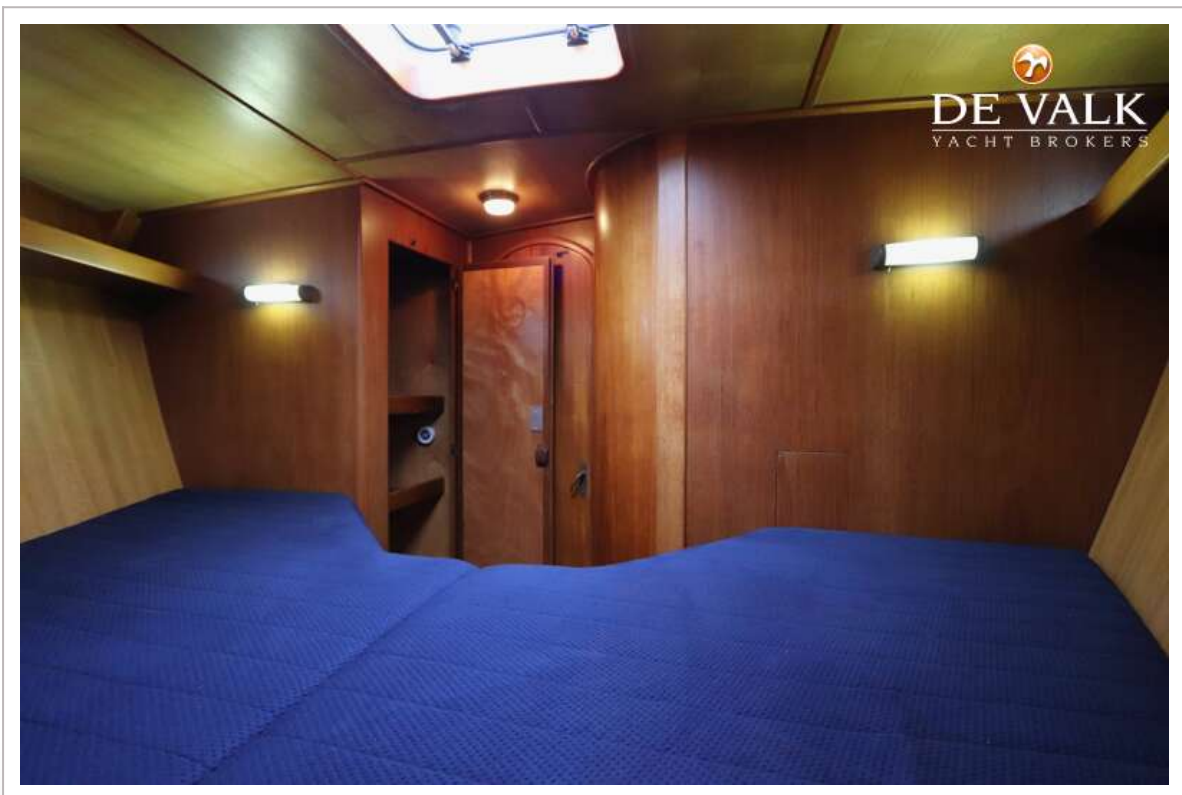
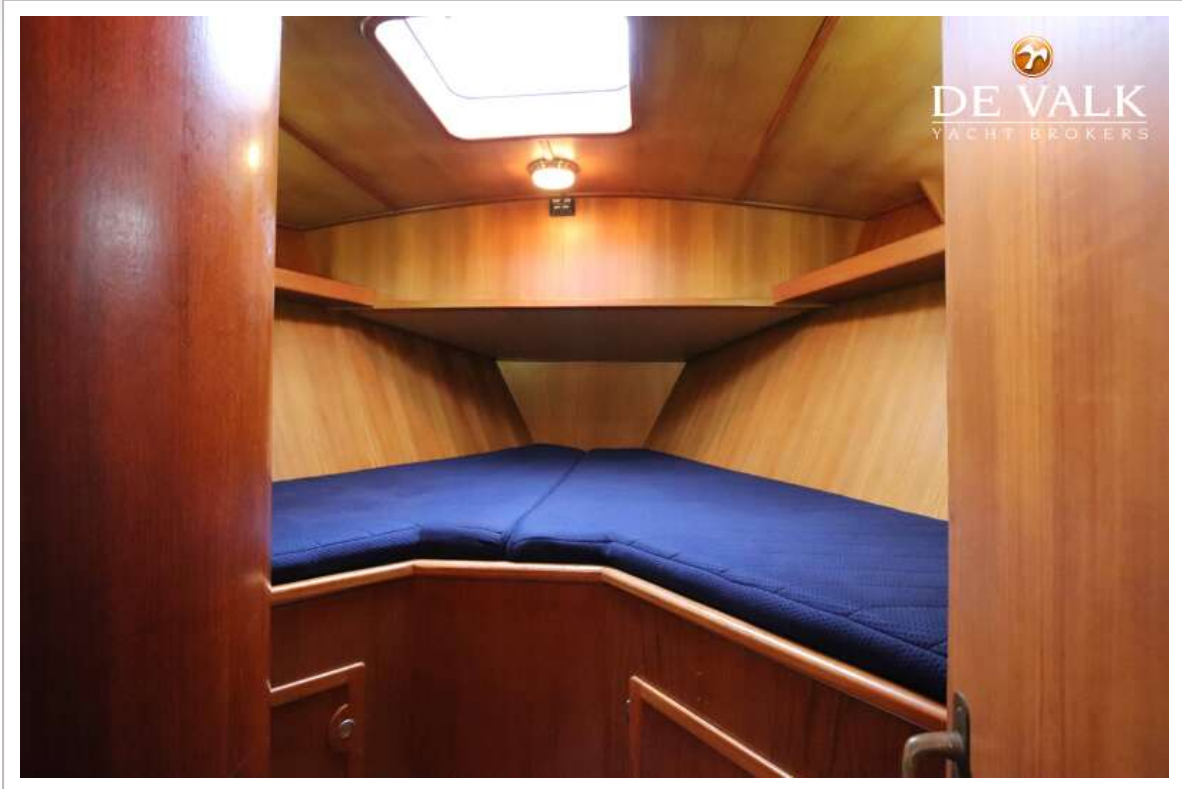
GLACER 40



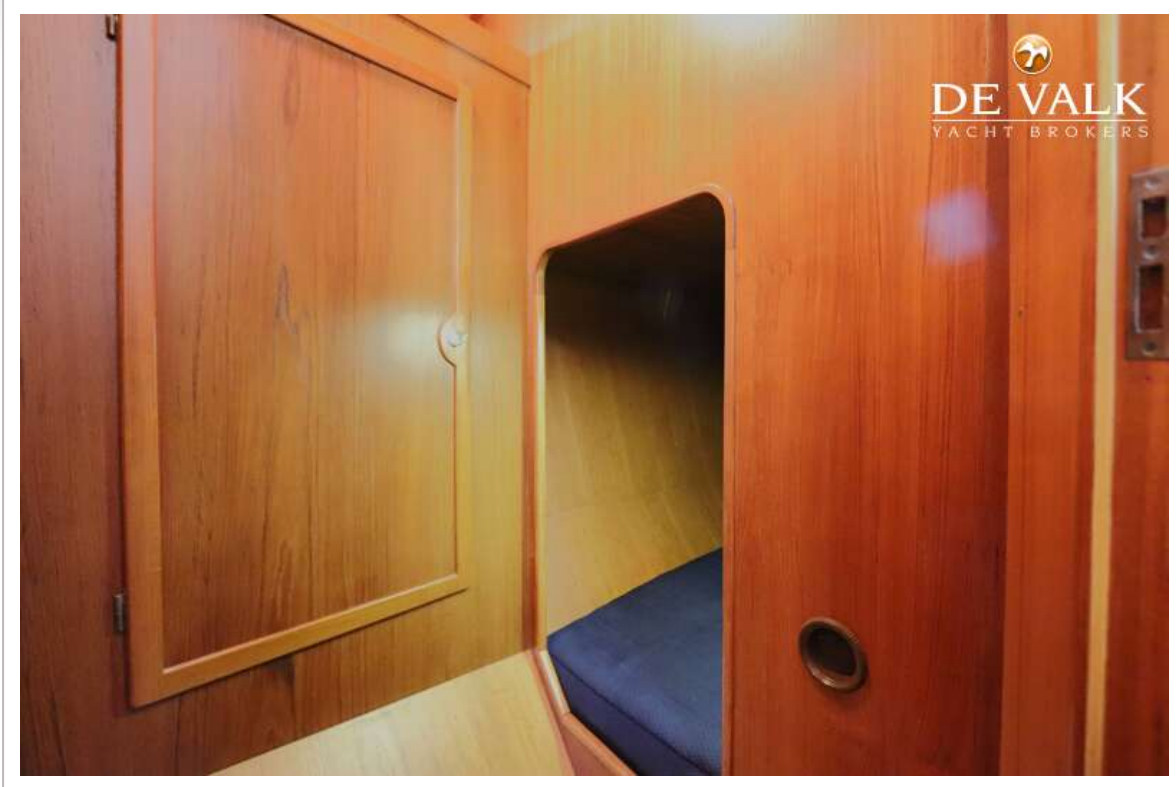
GLACER 40



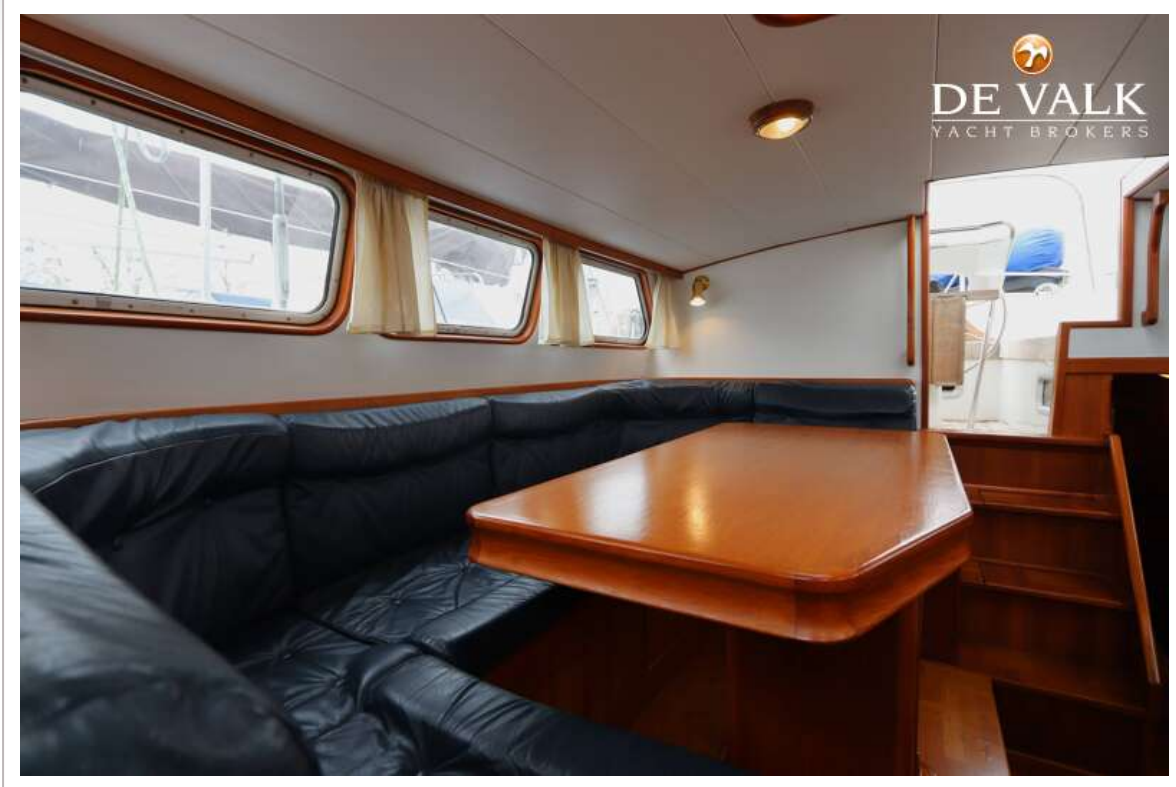
GLACER 40



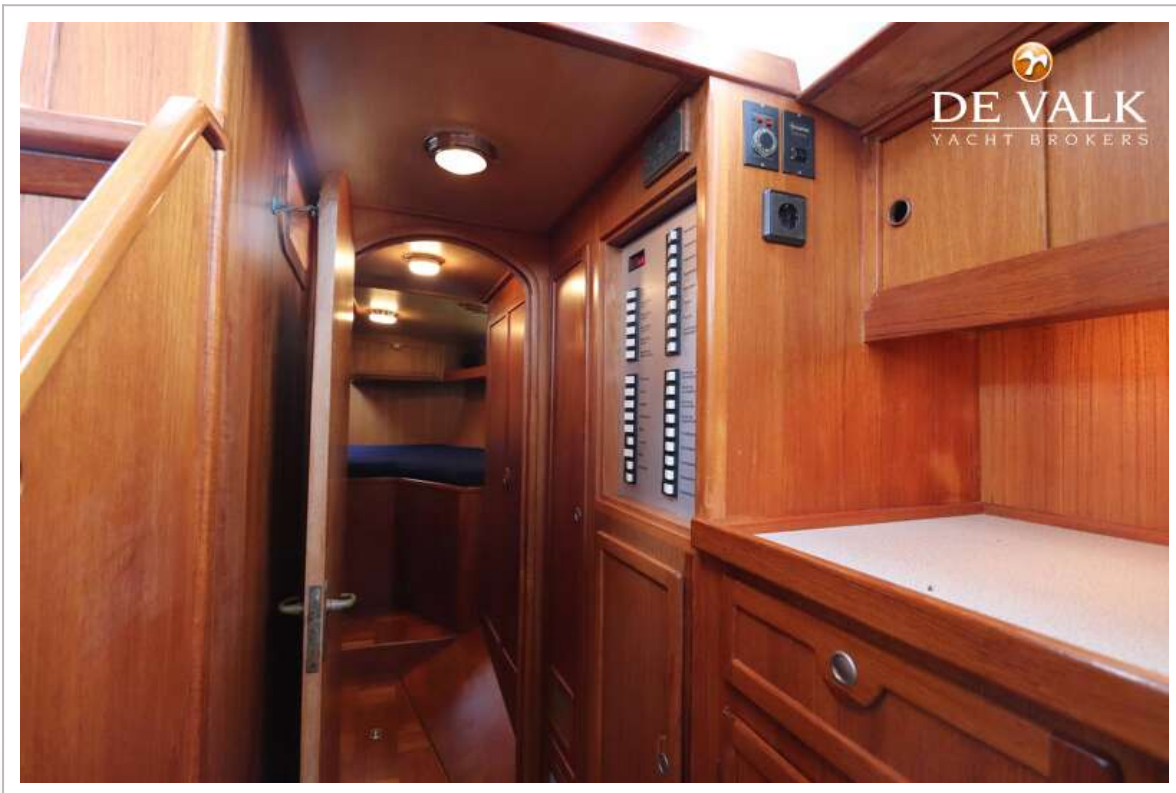
GLACER 40



GLACER 40



GLACER 40



GLACER 40

