



DE VALK
YACHT BROKERS



GRAND SOLEIL 50



DE VALK
YACHT BROKERS

GRAND SOLEIL 50

BROKER'S COMMENTS

This Doug Petersen designed Grand Soleil 50 is well known for her classic look and nice lines. 'Vento' is probably the best maintained Grand Soleil 50 cruising around today. She has spent every winter inside for optimum care. New teakdeck, full set of sails. Extended sail-wardrobe, new rodrigging and new alcantara upholstery are just a selection from the continuous upgrading and maintenance.

Henk Sijbranda

SPECIFICATIONS

Dimensions	15.41 x 4.30 x 2.30 (m)	Builder	Cantiere del Pardo
Built	1993	Cabins	3
Material	GRP	Berths	8
Engine(s)	1 x Yanmar 4JH2E Diesel	Hp/Kw	62.59 (hp), 46.00 (kw)
Asking price	sold (VAT)	Lying	at sales office

CONTACT

Sales office	De Valk Hindeloopen	Telephone	+31 514 52 40 00
Address	Oosterstrand 1 8713 JS Hindeloopen The Netherlands	E-mail	hindeloopen@devalk.nl

DISCLAIMER

These particulars are given in good faith as supplied but cannot be guaranteed.



GRAND SOLEIL 50

GENERAL

Model	GRAND SOLEIL 50
Type	sailing yacht
LOA (m)	15,41
LWL (m)	12,45
Beam (m)	4,30
Draft (m)	2,30
Headroom (m)	1,95
Year built	1993
Builder	Cantiere del Pardo
Country	Italy
Designer	Doug Peterson/J&J Design
Displacement (t)	13,3
Ballast (tonnes)	lead 4,8
CE norm	NA
Hull material	GRP
Hull colour	white
Hull shape	round-bilged
Keel type	fin keel
Superstructure material	GRP
Deck material	GRP
Deck finish	teak
Superstructure deck finish	teak
Cockpit deck finish	teak
Dorades	4x
Window frame	aluminium Goyot
Window material	tempered glass
Deckhatch	7x Goyot
Radar arch	non collapsible
Fuel tank (litre)	stainless steel 300
Level indicator (fuel tank)	yes



Freshwater tank (litre)	stainless steel 350
Blackwater tank (litre)	polyethylene
Level indicator (blackwater)	yes
Blackwater tank extraction	deck extraction + uw line
Wheel steering	chain steering
Emergency tiller	yes

ACCOMMODATION

Cabins	3
Berths	8
Interior	teak
Floor	teak and holly
Saloon	yes
Headroom saloon (m)	1,95
Heating	diesel ducted hot air Webasto
Navigation center	yes
Chart table	yes
Aft Cabin	2x
Galley	yes
Countertop	corian
Sink	stainless steel
Cooker	calor gas
Oven	In cooker
Fridge	2x top loading and 1x front loader with drawers
Hot water system	220V + engine Boiler
Water pressure system	electrical
Manual and/or foot pump	yes
Owners cabin	double bed
Bed length (m)	1,98
Wardrobe	hanging/drawers/shelves
Bathroom	en suite



Toilet	Yes
Toilet system	manual
Wash basin	Yes
Shower	Yes
Guest cabin 1	double bed
Bed length (m)	1,82
Wardrobe	drawers and shelves
Guest cabin 2	twin single
Bed length (m)	1,85
Wardrobe	drawers and shelves
Toilet	separate
Toilet system	manual
Wash basin	at the toilet
Shower	separate
Extra info	truma electric gas valve

MACHINERY

No of engines	1
Make	Yanmar
Type	4JH2E
HP	62,59
kW	46,00
Fuel	diesel
Year installed	1993
Maximum speed (kn)	8,5
Cruising speed (kn)	7
Consumption (l/hr)	4
Engine hours	1108
Engine cooling system	freshwater heat exchanger
Drive	shaft
Shaft seal	yes



GRAND SOLEIL 50

Engine controls	bowden cable
Gearbox	mechanical
Bowthruster	electric Maxpower - Retractable
Exhaust	watercooled
Propeller type	fixed MaxProp
Propeller blades	3
Shaft lubrication	water
Manual bilge pump	yes
Electric bilge pump	yes
Electrical installation	12V and 220V
Start battery	1x PowerBlock+ 80Ah
Service battery	5x WhisperPower 55 Ah AGM - 2016
Bowthruster battery	2x Exide EM1000 50Ah - 2016
Battery monitor	yes
Battery charger	Mastervolt Chargemaster 12/50-3 - 2010 & Mastervolt for bowthruster batteries
Inverter	1x Victron 12V 350VA
Shorepower	with cable

NAVIGATION

Compass	Cassens & Plath
Depth sounder	Raymarine ST60 DEPTH out side and Autohelm DEPTH inside
Log	Raymarine ST60 SPEED outside and Autohelm SPEED inside
Windset	Raymarine ST 60 WIND and CH WIND
Repeater	Autohelm MULTI inside
VHF	Sailor RT5022 DSC + control unit outside & Shipmate RS8100
Autopilot	Raymarine P70 display
Radar	Furuno rader + Furuno monitor
GPS	Furuno GP32
Plotter	Simrad NSS12 (2013) outside + B&G T7 (2018) inside
Electronis chart(s)	yes



AIS receiver	AIS radar
Navigation lights	yes

EQUIPMENT

Sprayhood	2011
Bimini	2013
Cockpit table	yes
Boarding ladder	stainless steel
Bow ladder	2014
Deck shower	yes
Anchor	CQR Plough
Anchor chain	50m
Windlass	electrical Loftrans
Capstan	yes
Sea railing	stainless steel
Railing side opening gates	yes
Pushpit	yes
Pulpit	yes
Life raft	container
Life raft (pers)	8
Last life raft survey	2017
Lifebuoy	yes
Horn	electric
Radar reflector	SeaMe
Fenders	yes
Mooring lines	yes
Radio-cd player	JVC
Cockpit speakers	yes
Speakers in salon	yes
Clock - barometer	Wempe
Fire extinguisher	yes



RIGGING

Rigging	sloop
Standing rigging	Rod - 2010
Brand mast	Francespar
Material mast	aluminium coated
Spreaders	3 Pair
Keel stepped mast	yes
Mainsail	Beilken - 54,0 m ² - 2011
Mainsail cover	yes
Battcars	Harken
Fully battened mainsail	yes
Genoa I	84,02 m ² - regatta sail
Genoa III	54,4 m ² - 2007
Genoa furler	Removable furling drum
Genoa cover	yes
Gennaker	Yes
Spinnaker	Yes
Reefing System	slabreefing Two
Backstay adjuster	hydraulic Navtex
Boomvang	hydraulic Navtex
Primary sheet winch	2x Lewmar 43 self-tailing
Genoa sheetwinches	2x Lewmar 66 self-tailing
Halyard winches	2x Lewmar 46 self-tailing
Spinnaker winch	Lewmar 54 self-tailing - electric
Reefing winch	1x Lewmar 30 self-tailing
Spi-pole	carbon
Jockey-pole	carbon
Isolated backstay	yes
Extra info	Hydraulic baby stay



GRAND SOLEIL 50



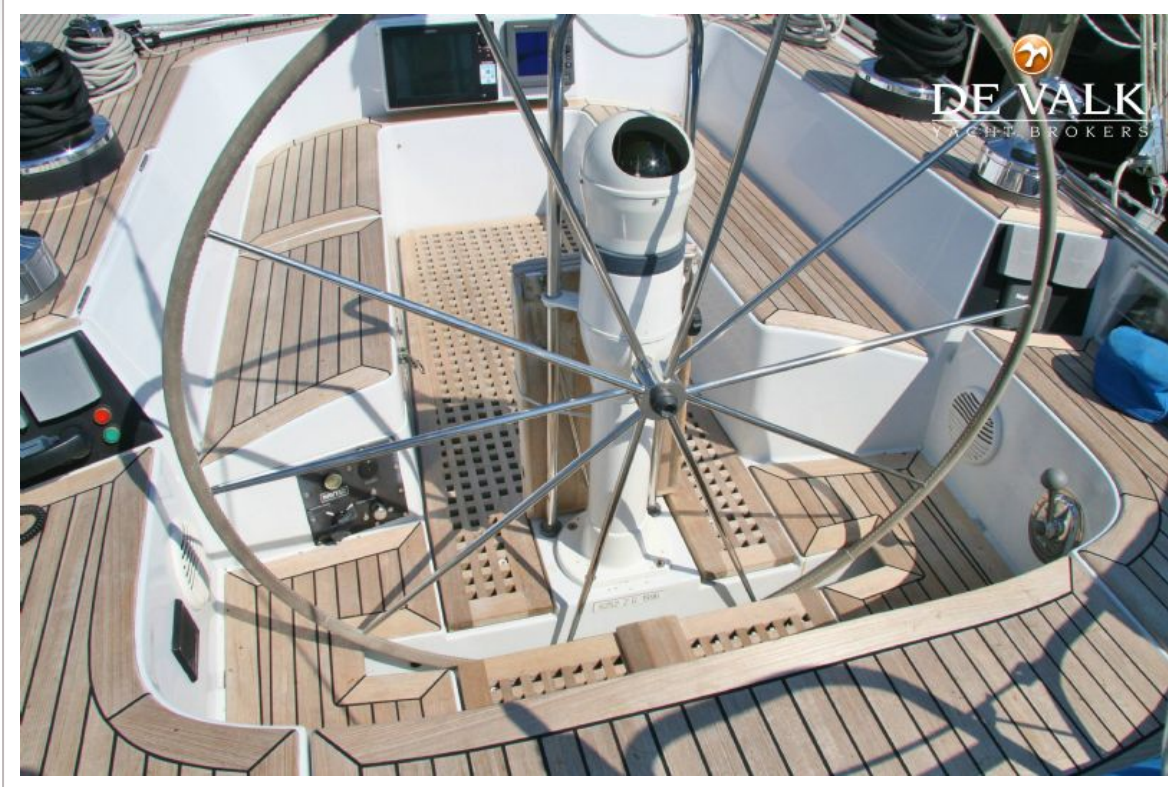
GRAND SOLEIL 50



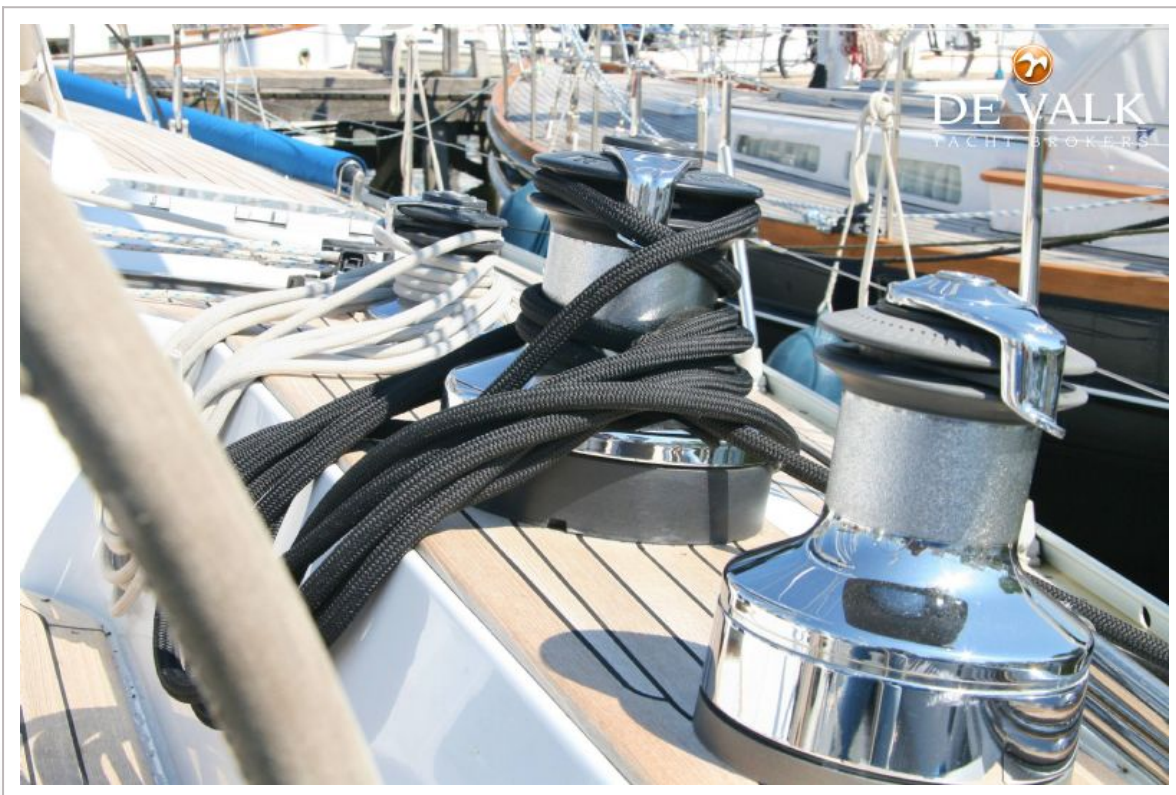
GRAND SOLEIL 50



GRAND SOLEIL 50



GRAND SOLEIL 50



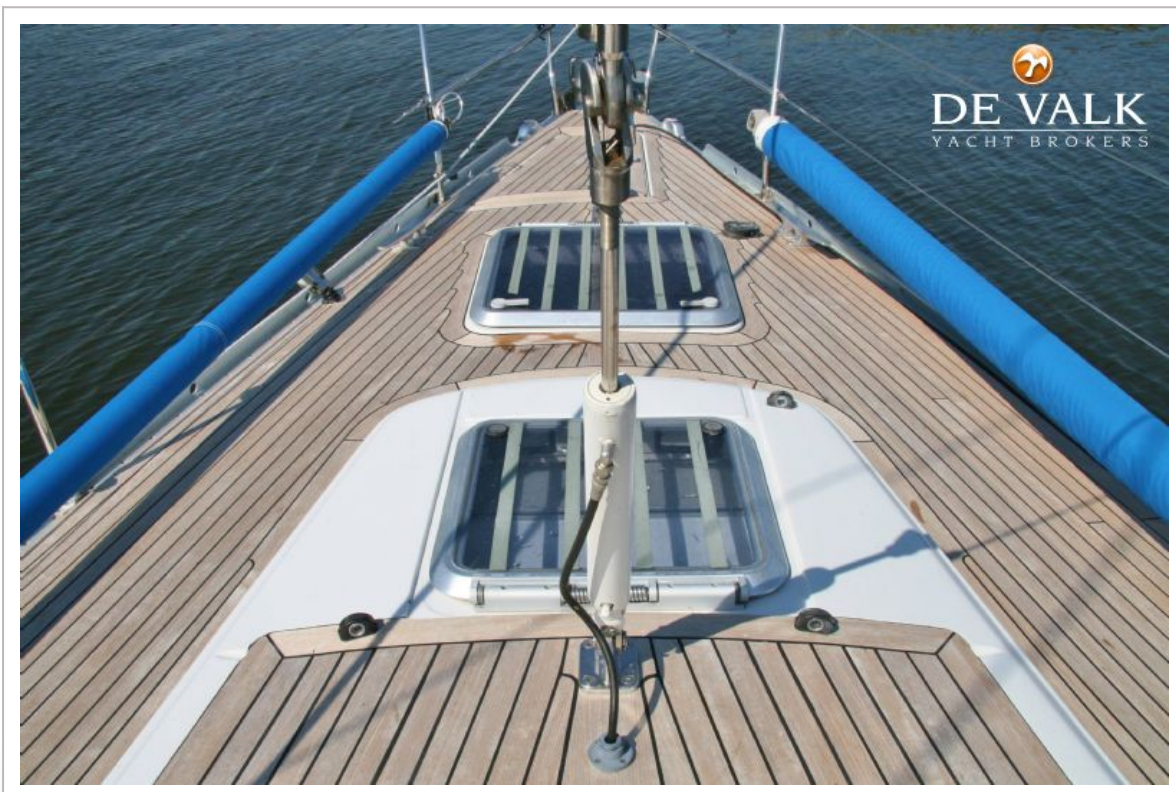
GRAND SOLEIL 50



GRAND SOLEIL 50



GRAND SOLEIL 50



GRAND SOLEIL 50



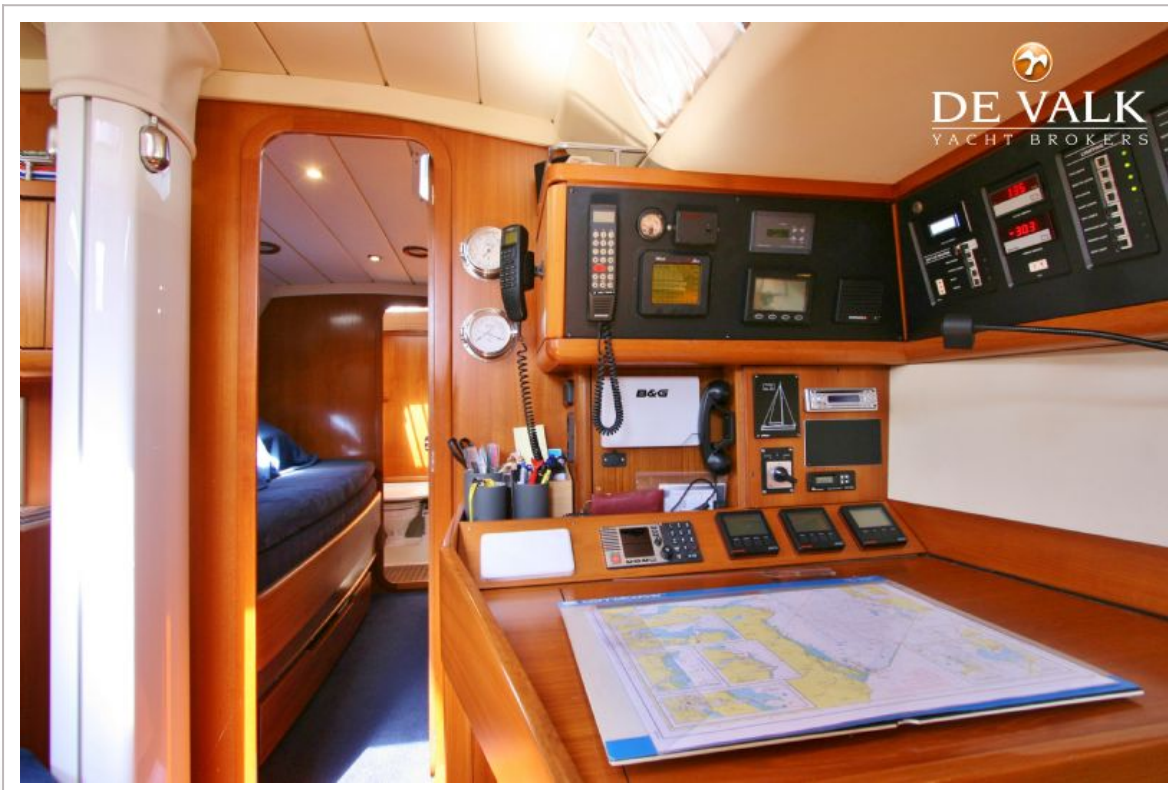
GRAND SOLEIL 50



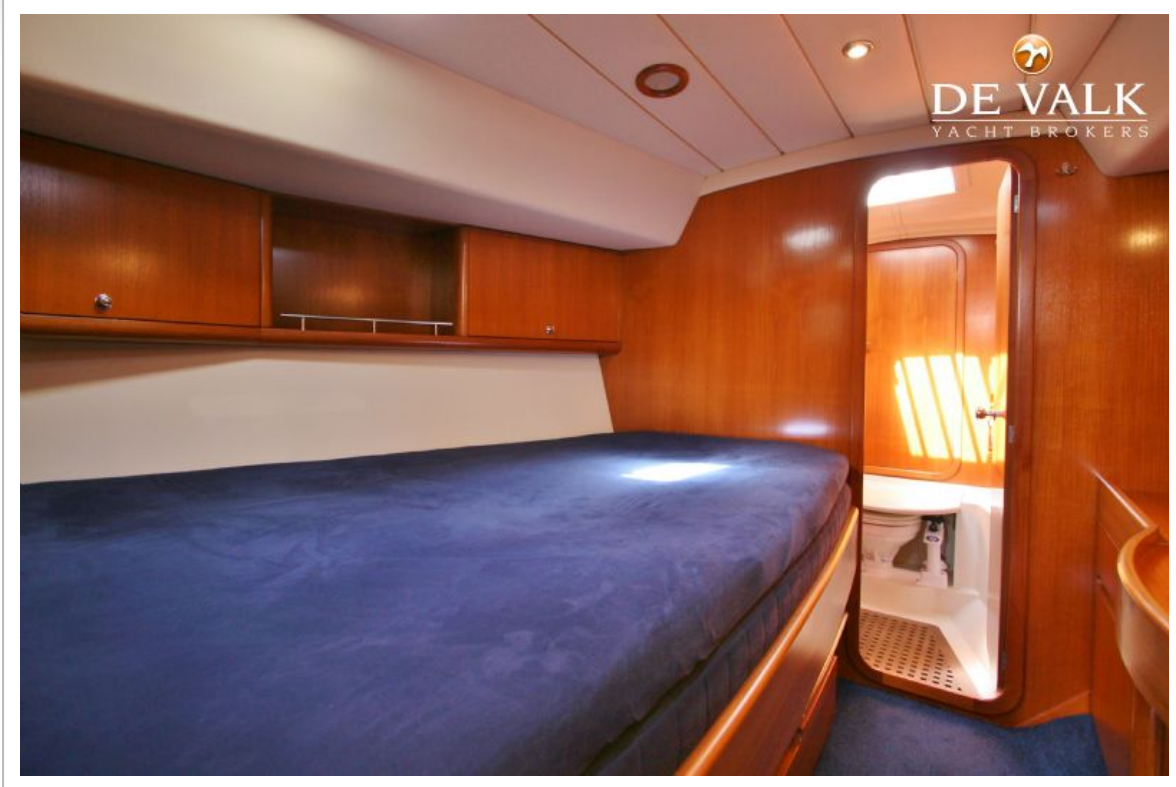
GRAND SOLEIL 50



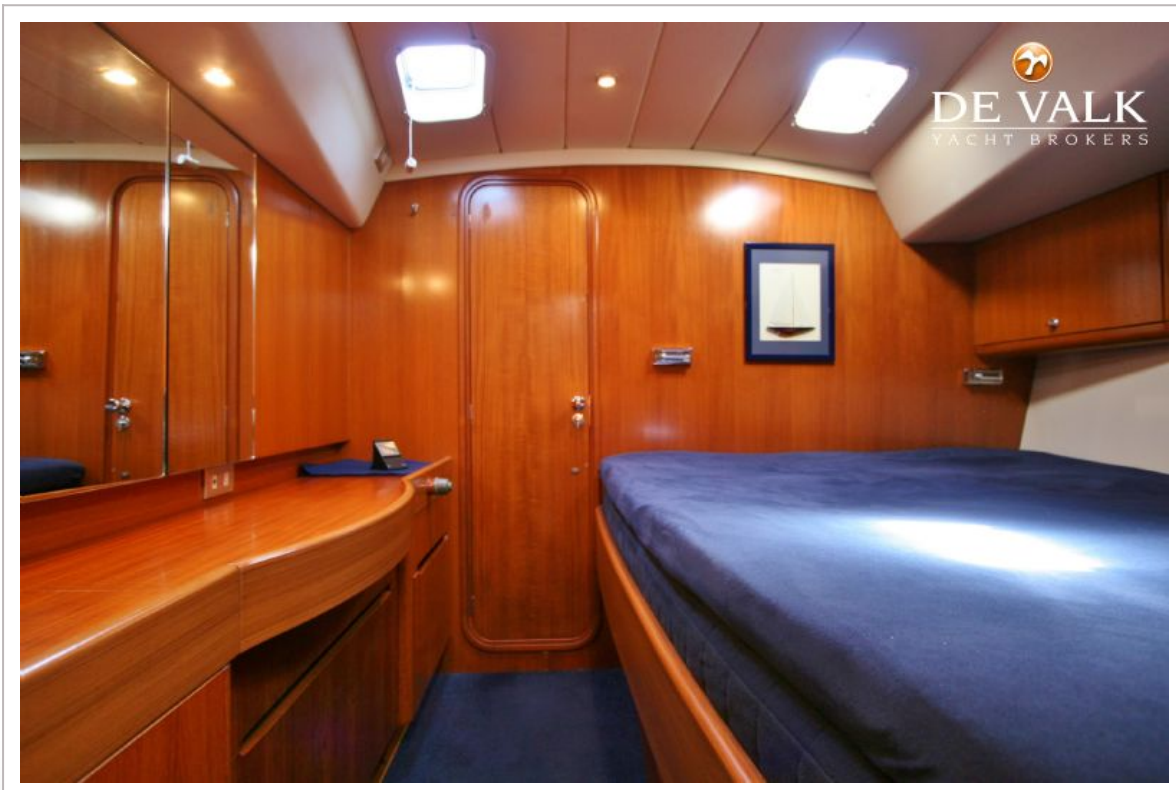
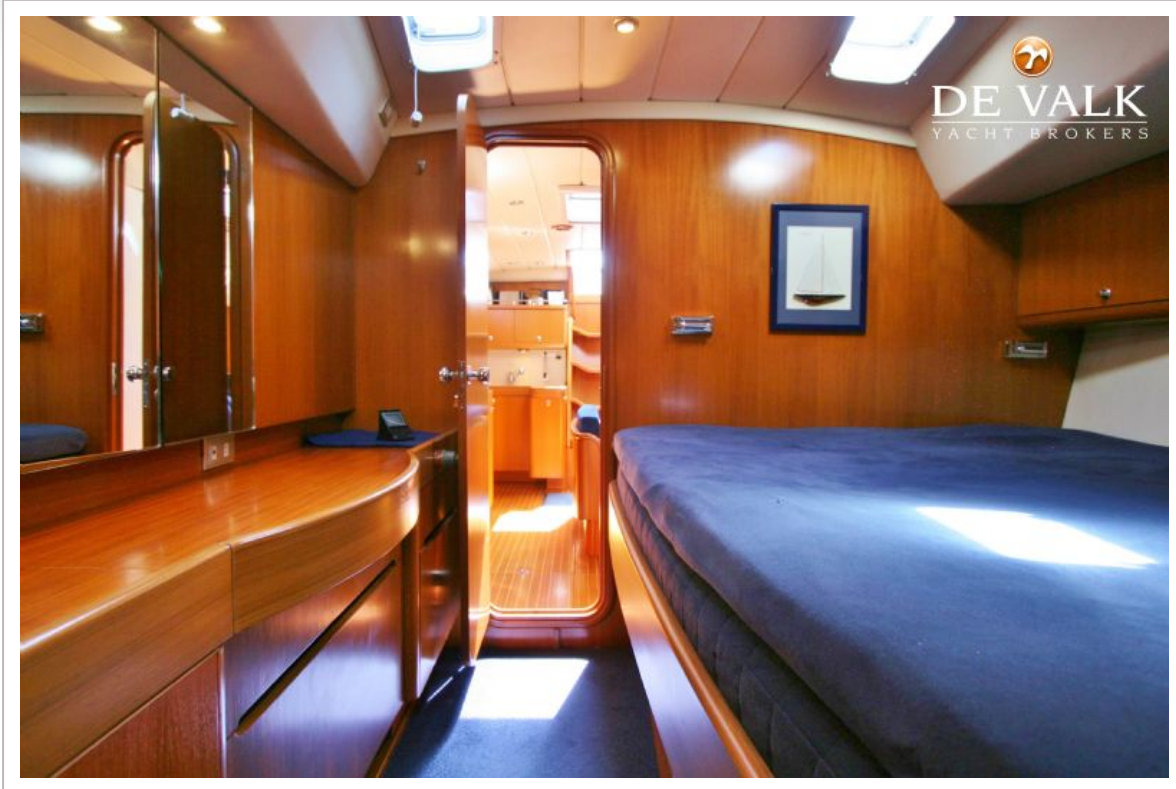
GRAND SOLEIL 50



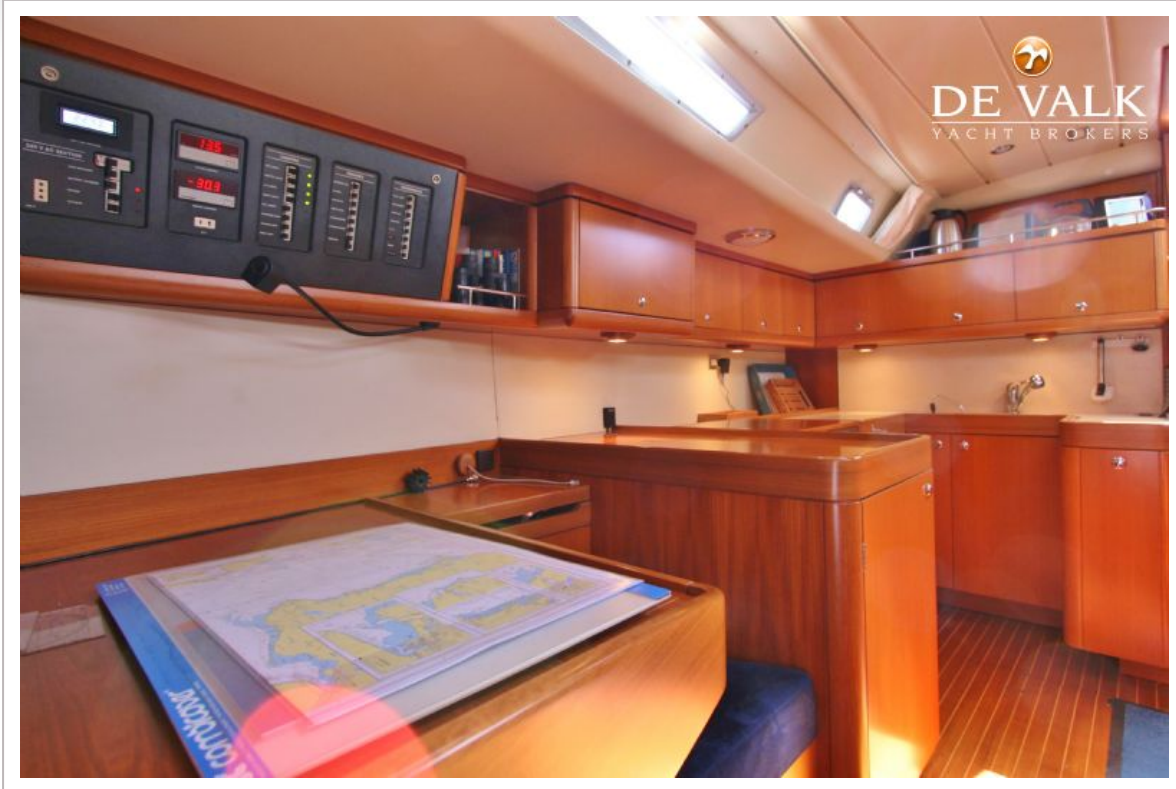
GRAND SOLEIL 50



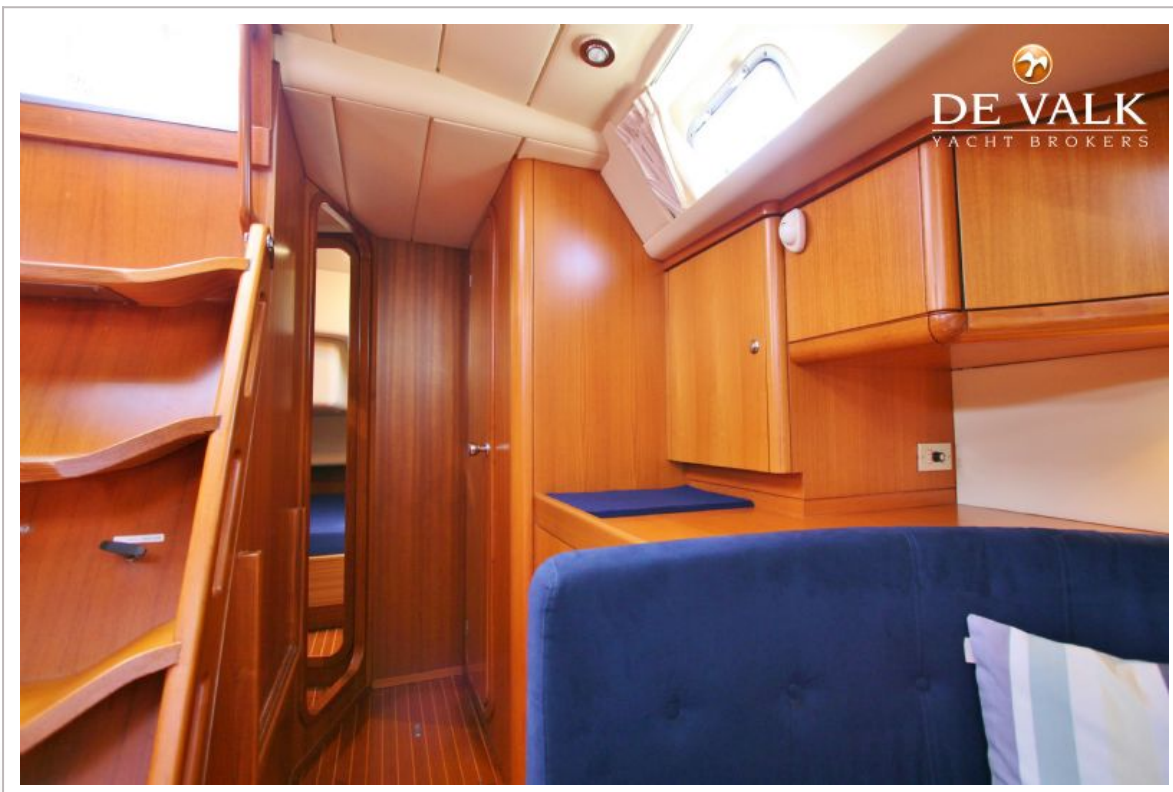
GRAND SOLEIL 50



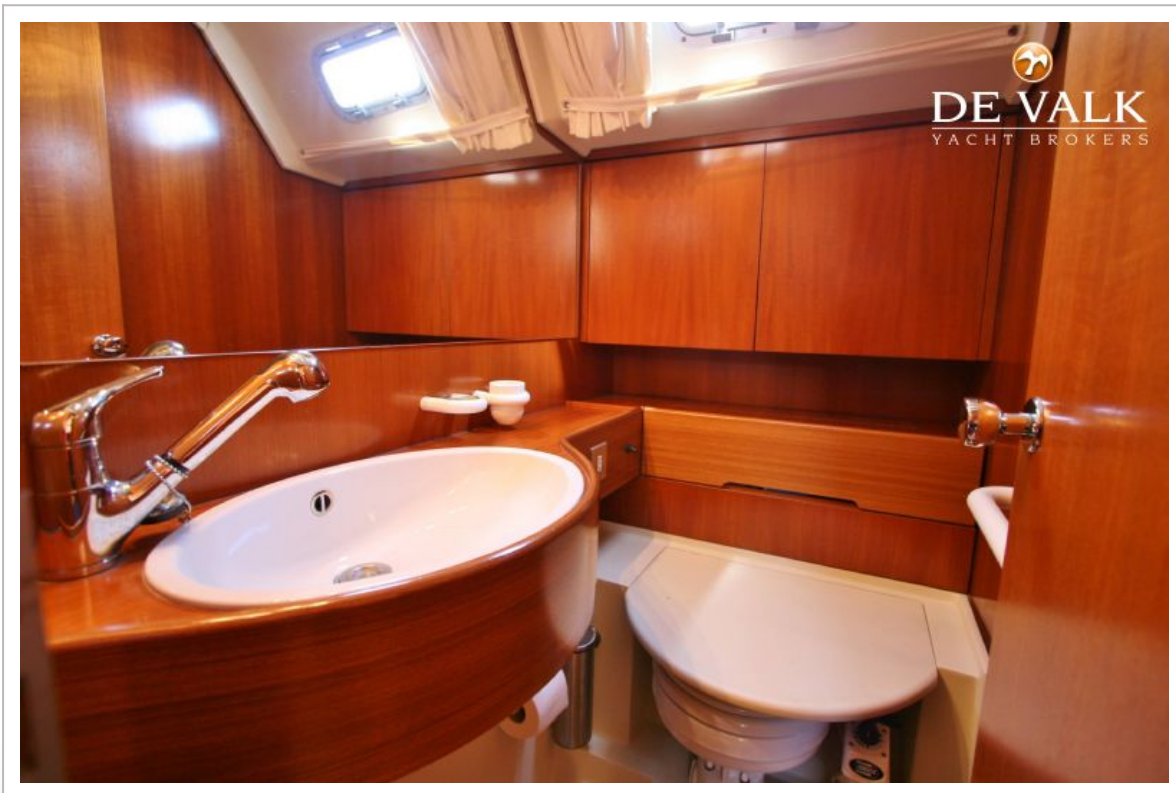
GRAND SOLEIL 50



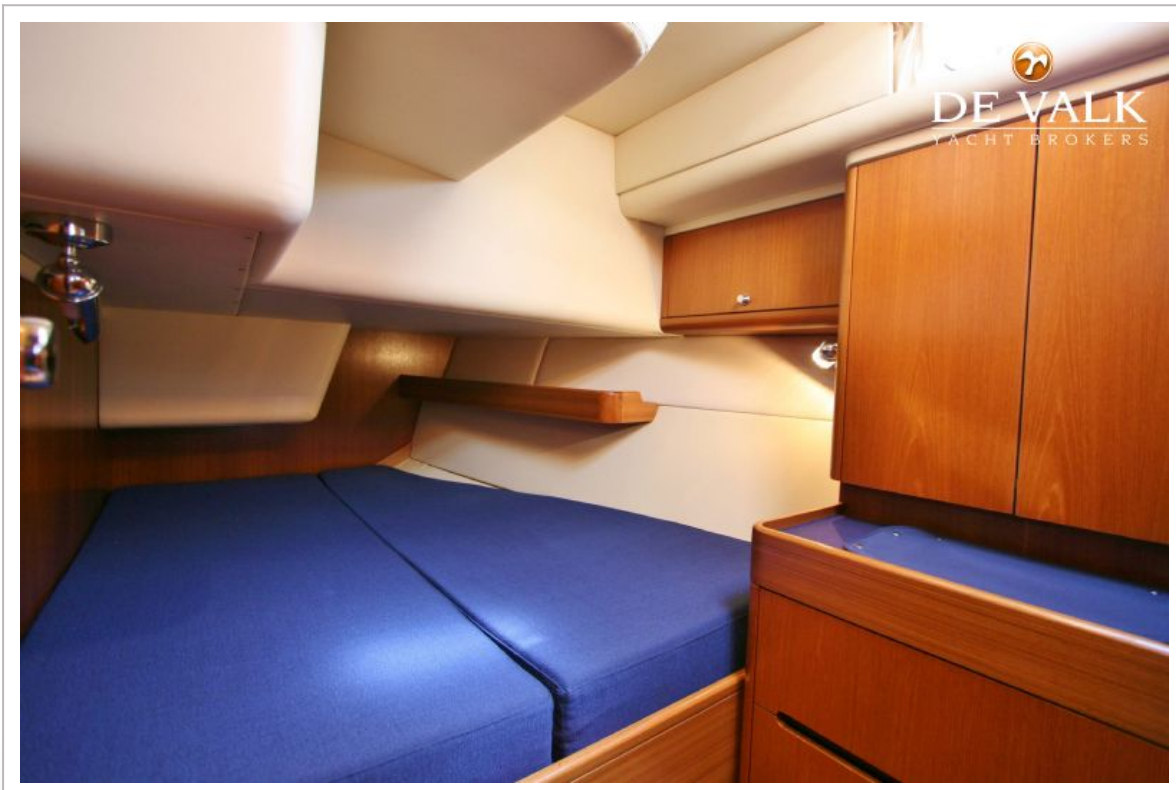
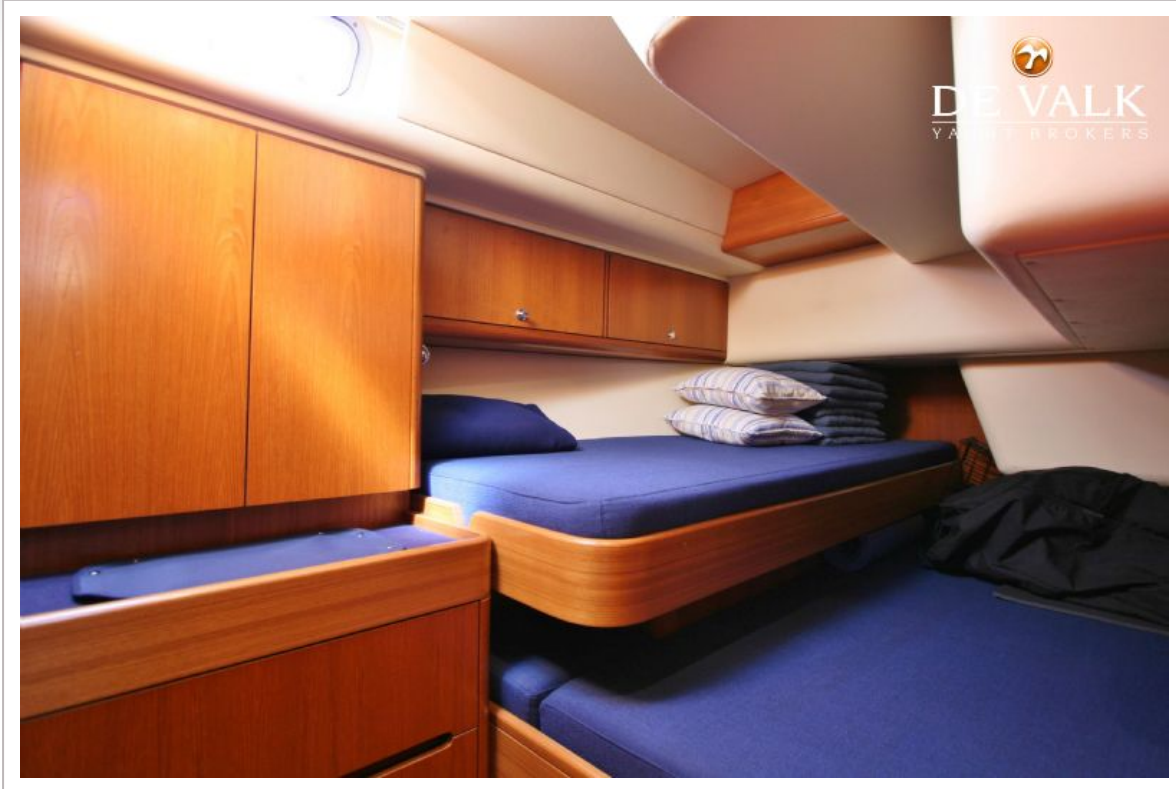
GRAND SOLEIL 50



GRAND SOLEIL 50



GRAND SOLEIL 50



GRAND SOLEIL 50

