



DE VALK
YACHT BROKERS



FEADSHIP KETCH



DE VALK
YACHT BROKERS

FEADSHIP KETCH

BROKER'S COMMENTS

Iduna is the largest pre-war yacht built at De Vries Shipyard in Aalsmeer (NL) and is a proud member of the Feadship heritage fleet. Extensive refit was carried out from 1999 to 2002 at Cantiere Darsena in Viareggio which is fully documented. Since then she has been meticulously maintained and has undergone the necessary small refits throughout time. She's unique and one of a kind waiting for a new owner who see's how special she is.

Leonard Bonnema

SPECIFICATIONS

Dimensions	33.50 x 5.70 x 2.50 (m)	Builder	De Vries Aalsmeer
Built	1939	Cabins	3
Material	Steel	Berths	6
Engine(s)	1 x Caterpillar 3406 TA diesel	Hp/Kw	340.00 (hp), 250.24 (kw)
Asking price	€ 3.900.000 (VAT Exempt)	Lying	contact sales office

CONTACT

Sales office	Falcon Rydell Yachts	Telephone	+31 35 582 90 29
Address	't Breukeleveense Meentje 6 1231 LM Loosdrecht / Wijdemeren The Netherlands	E-mail	info@falconrydell.com

DISCLAIMER

These particulars are given in good faith as supplied but cannot be guaranteed.



FEADSHIP KETCH

GENERAL

Model	FEADSHIP KETCH
Type	motorsailer
LOA (m)	33,50
LWL (m)	25,00
Beam (m)	5,70
Draft (m)	2,50
Year built	1939
Builder	De Vries Aalsmeer
Country	The Netherlands
Designer	H.W. de Voogt
Displacement (t)	81
Gross tonnage	133
Hull material	steel
Hull colour	White
Hull shape	Round bilged
Superstructure material	Wood
Deck finish	Teak laid on two layers of plywood
Fuel tank (litre)	5.000
Freshwater tank (litre)	6.000
Blackwater tank (litre)	Haman black and grey watersystems, 2.500 litres
Wheel steering	Hydraulic
Outside helm position	With great overview
More info on hull	Complete refit 1999-2002

ACCOMMODATION

Cabins	3
Berths	6
Interior	cherry
Saloon	Two spacious Saloons (1 lower deck; 1 deckhouse)
Owners cabin	With queen sized bed and en suite bathroom



FEADSHIP KETCH

Bathroom	en suite
Guest cabin 1	Double guest cabin with en suite bathroom
Bathroom	en suite
Guest cabin 2	Twin guest cabin with bathroom en suite
Bathroom	en suite
Crew cabin(s)	2 large cabins for 4 crew with spacious bathroom, galley/mess

MACHINERY

No of engines	1
Make	Caterpillar
Type	3406 TA
HP	340
kW	250.24
Fuel	diesel
Year of overhaul	2001
Maximum speed (kn)	12
Cruising speed (kn)	9
Gearbox	Twindisc
Bowthruster	Powerpack for winches, capstan and 50hp bowthruster
Electric bilge pump	yes
Electrical installation	Re-wired 2001 with new switch and distribution boards
Generator	2x 35kVA, 3-phase 380V, 50hz, Perkins

NAVIGATION

Multi control display	B&G depth, speed, wind, wind angle; 3 positions
VHF	Sailor RT4822, SSB/DSC-Sailor HC 4500
VHF handheld	4x Icom; 2x Icom 1500
Autopilot	Litton MarineC PLATH
Radar	Furuno 1943 #2 displays with ARPA cards
GPS	JRC DGPS 200
Navtex	NCR 330



FEADSHIP KETCH

EPIRB

Satelite EPIRB-Sailor 406 Mhz

EQUIPMENT

Storm blinds

yes

Windlass

hydraulic

Capstan

Hydraulic

Dinghy

rigid inflatable Avon 4 m.

Outboard

50 hp

TV

yes

TV receiver

SEATEL TV 1898E

Fire extinguisher

yes

Extra info

Safety equipment

Extra info

Fire fighting systems

RIGGING

Rigging

ketch Rigging by Harry Spencer of Cowes

Material mast

wood 2x

Extra info

Complete set of sails by Ratsey & Lapthorne

Extra info

Deck fittings in bronze, Meissner hydraulic bronze winches



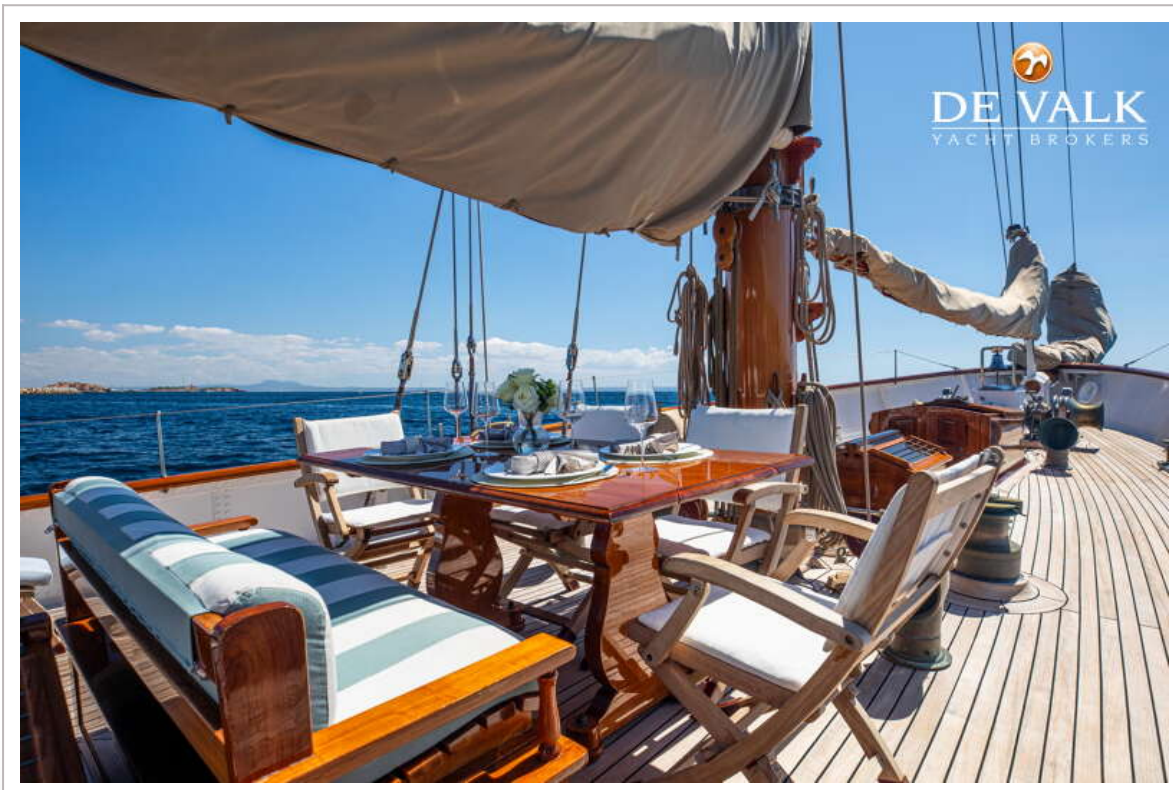
FEADSHIP KETCH



FEADSHIP KETCH



FEADSHIP KETCH



FEADSHIP KETCH



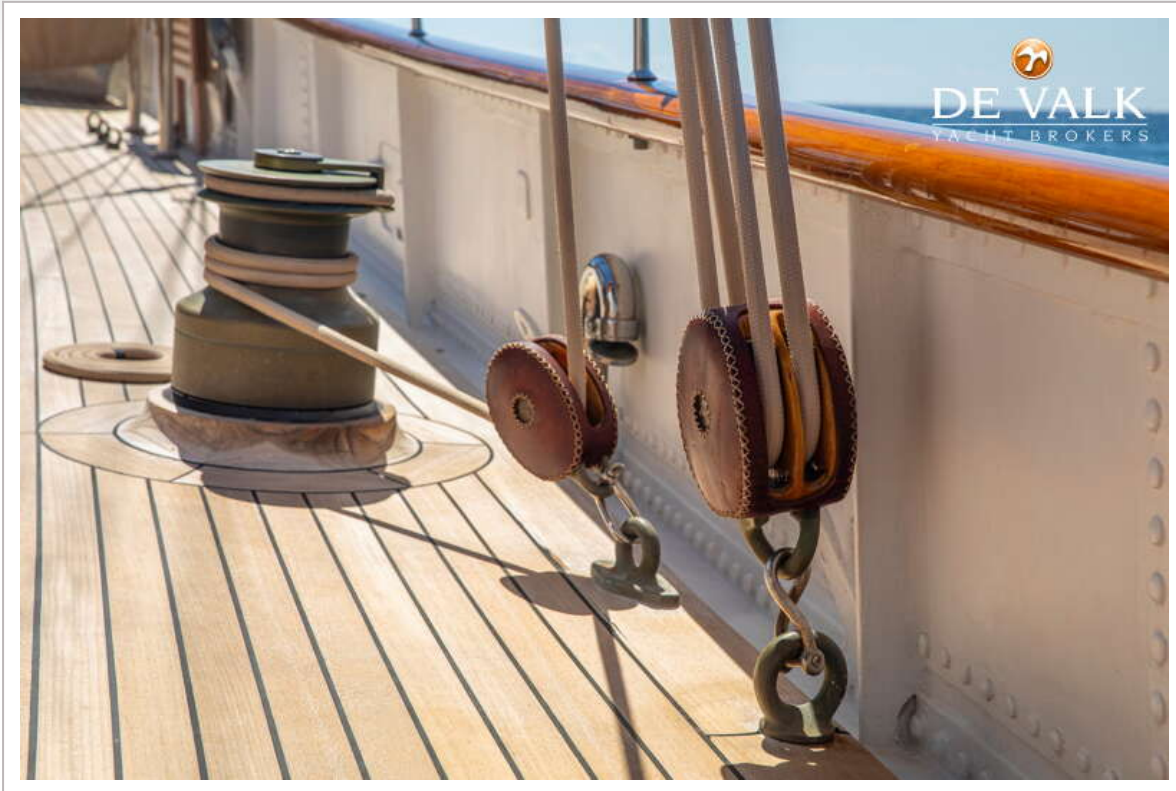
FEADSHIP KETCH



FEADSHIP KETCH



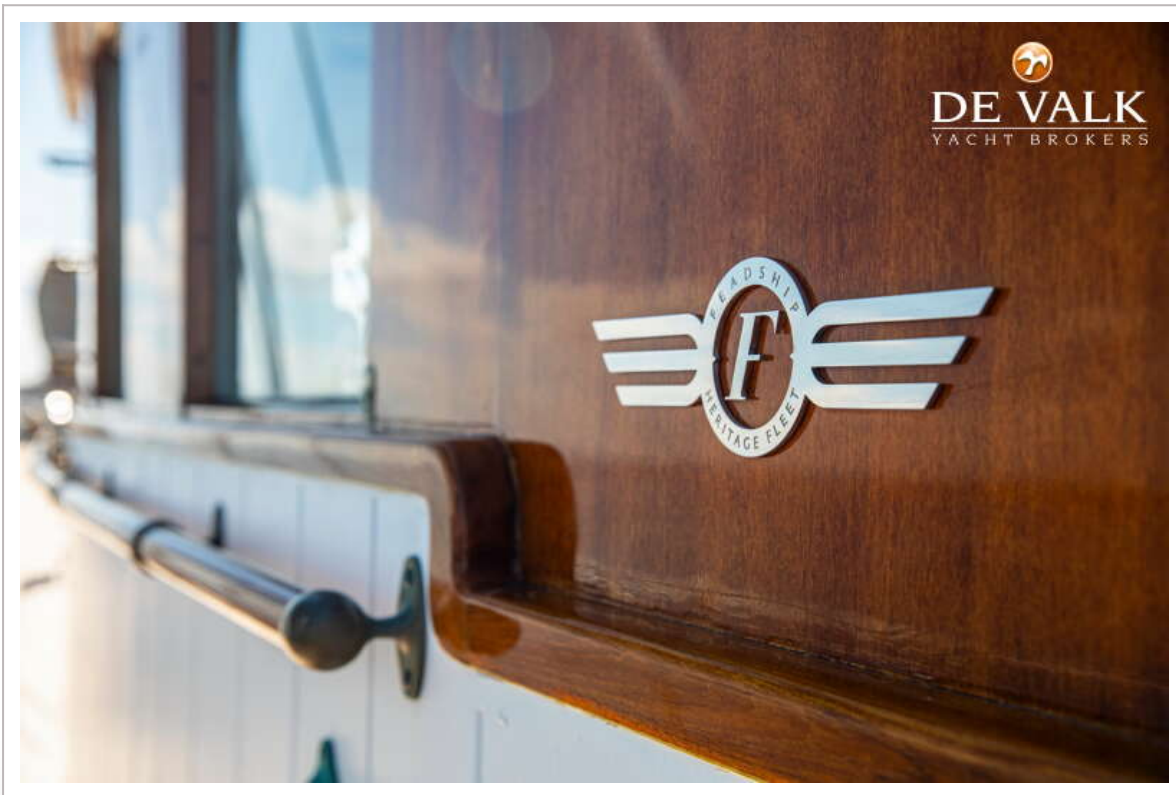
FEADSHIP KETCH



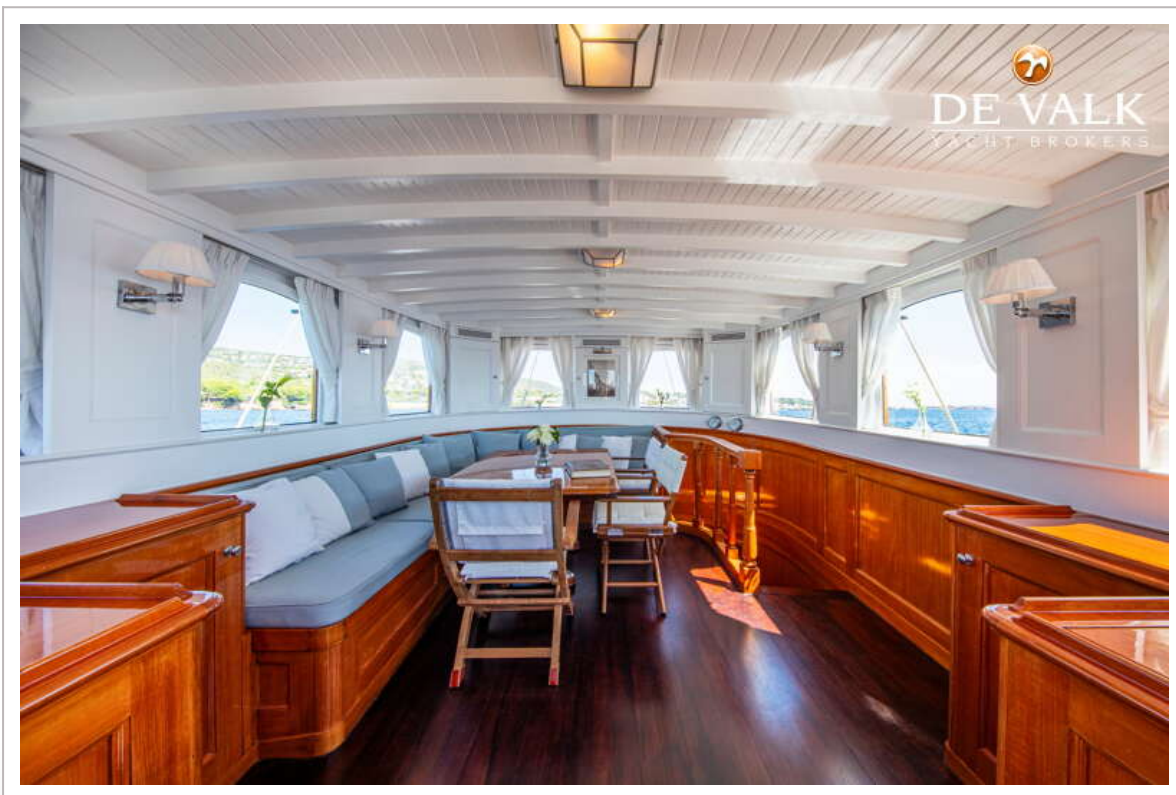
FEADSHIP KETCH



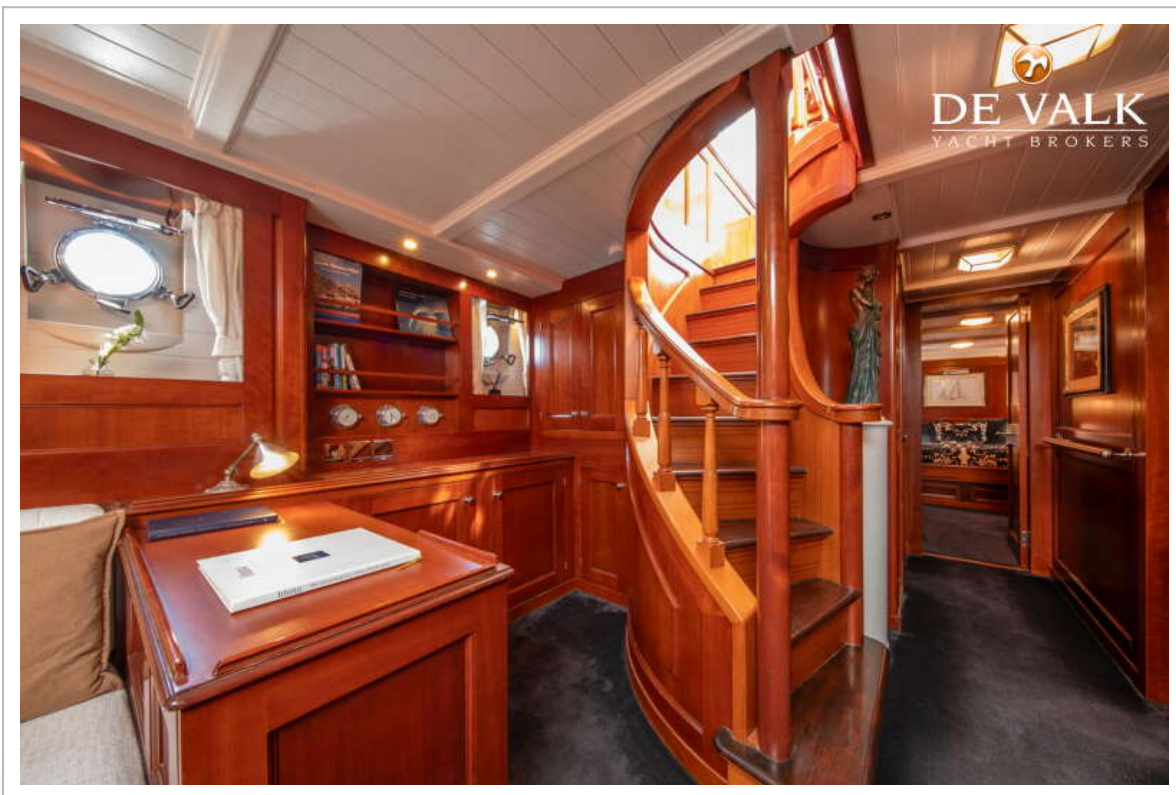
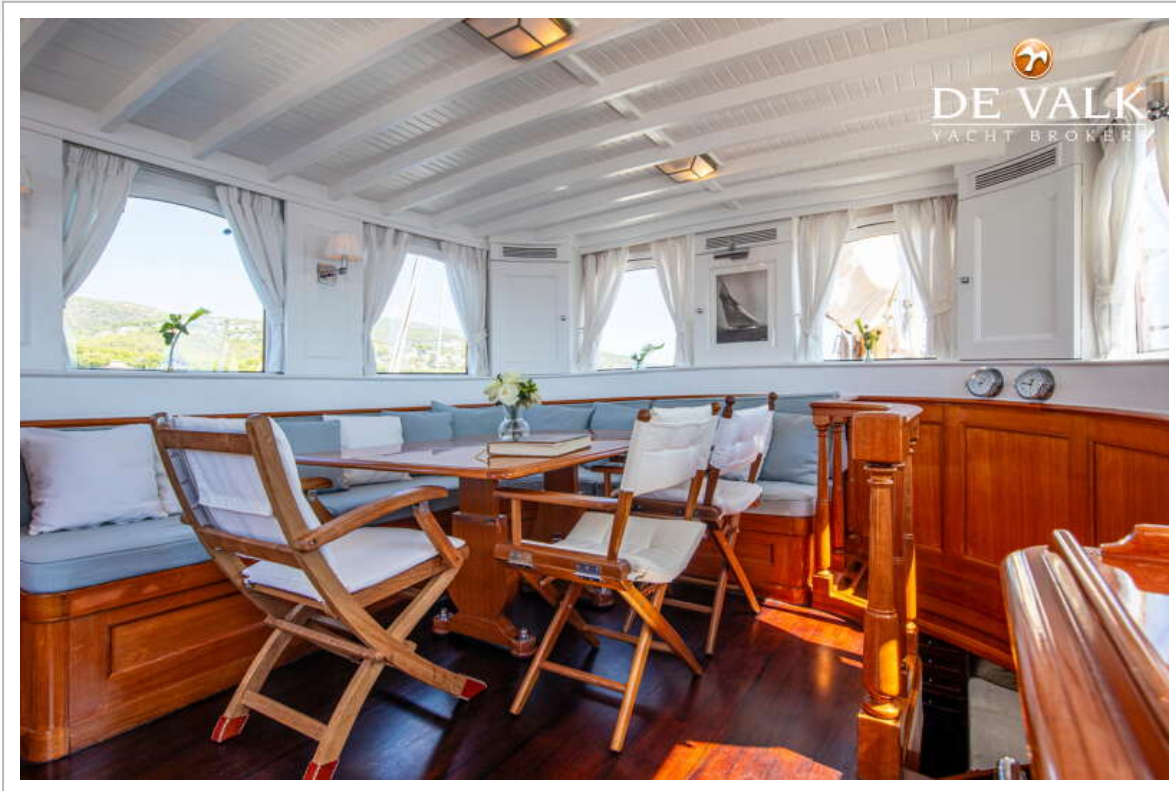
FEADSHIP KETCH



FEADSHIP KETCH



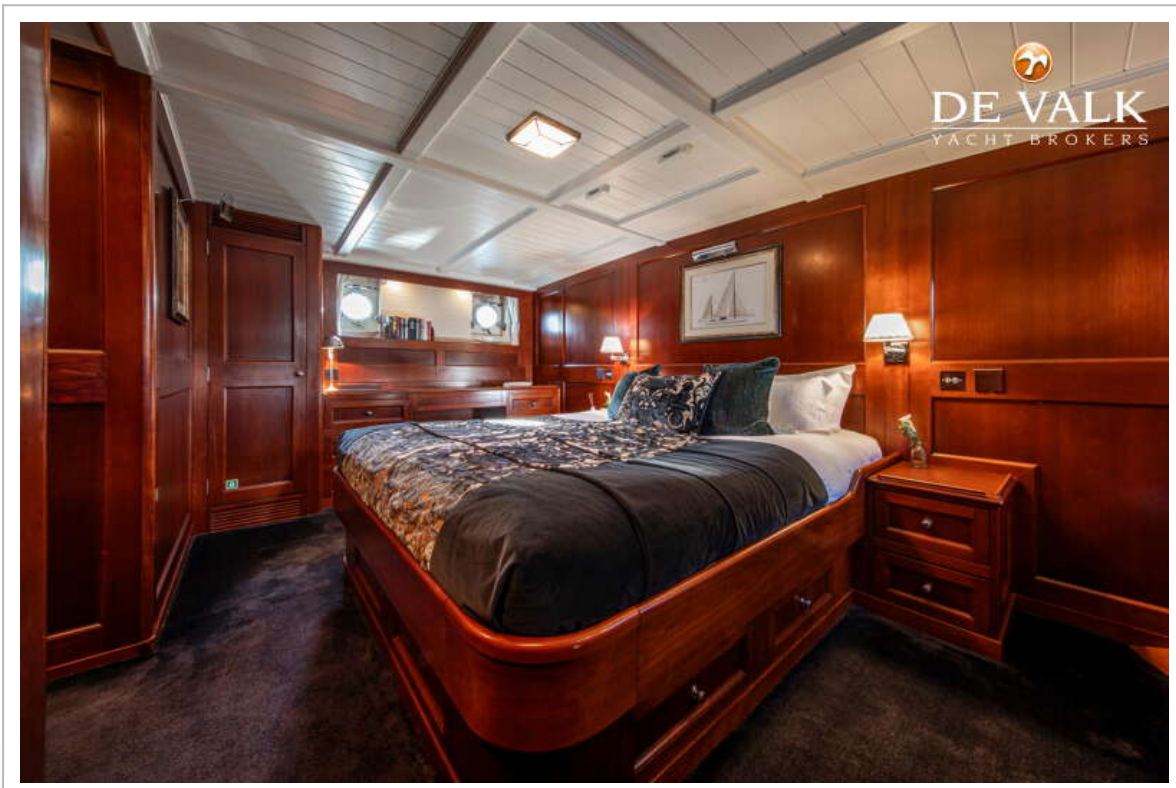
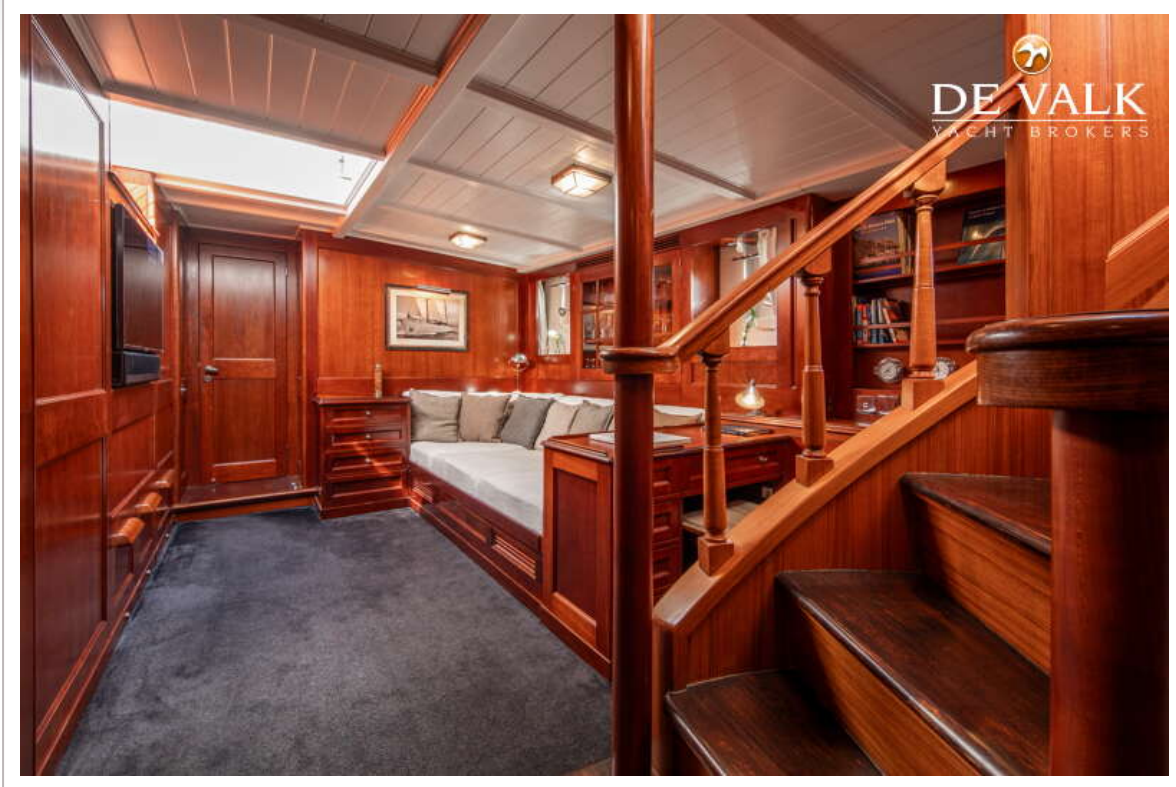
FEADSHIP KETCH



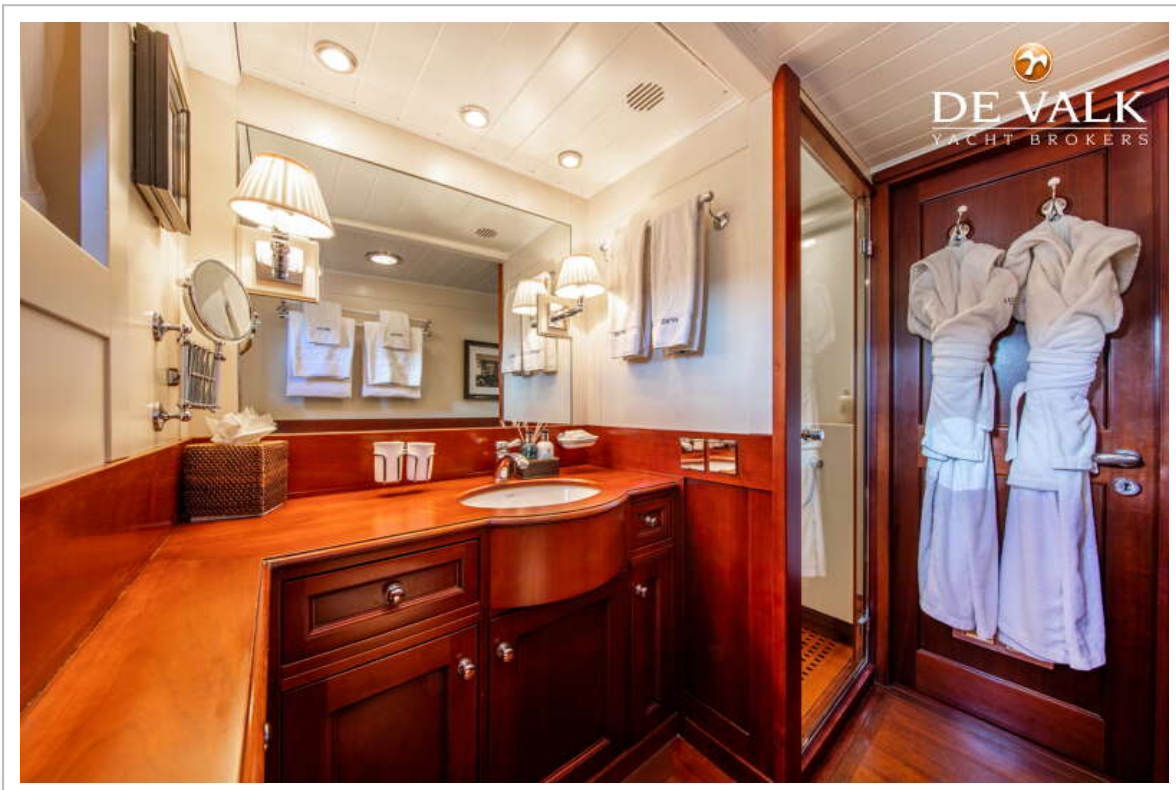
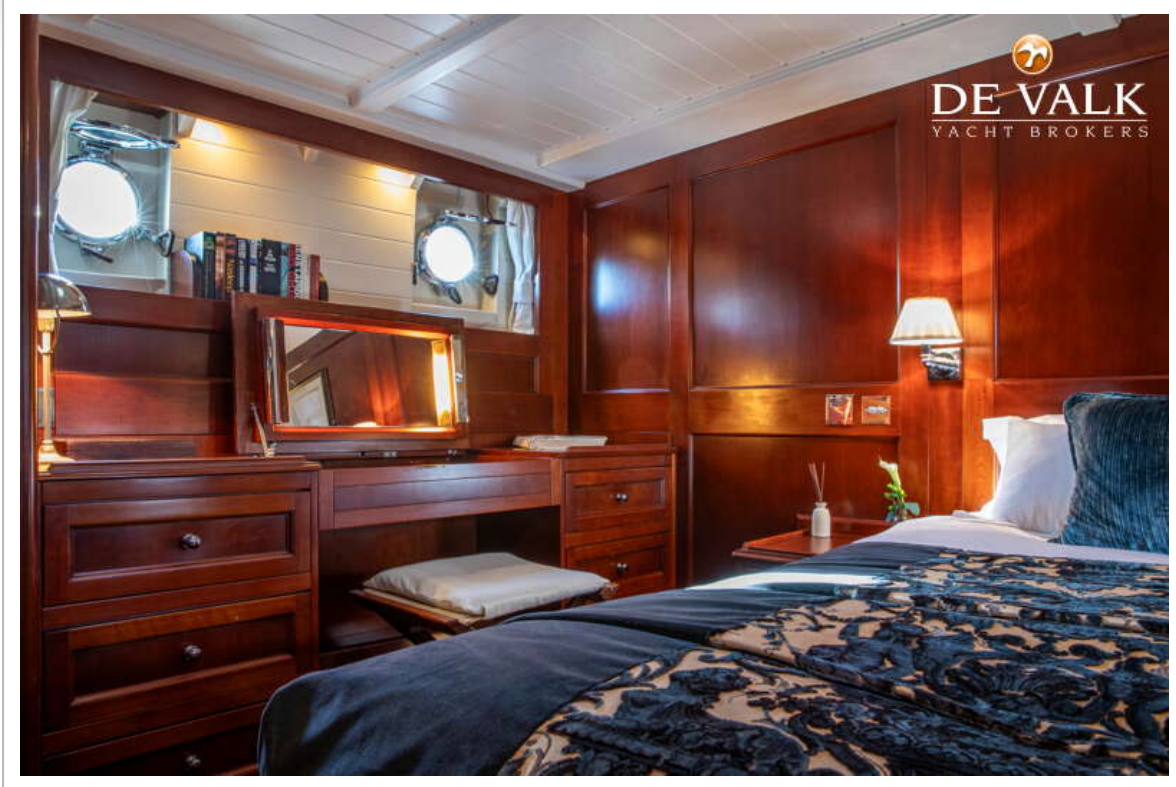
FEADSHIP KETCH



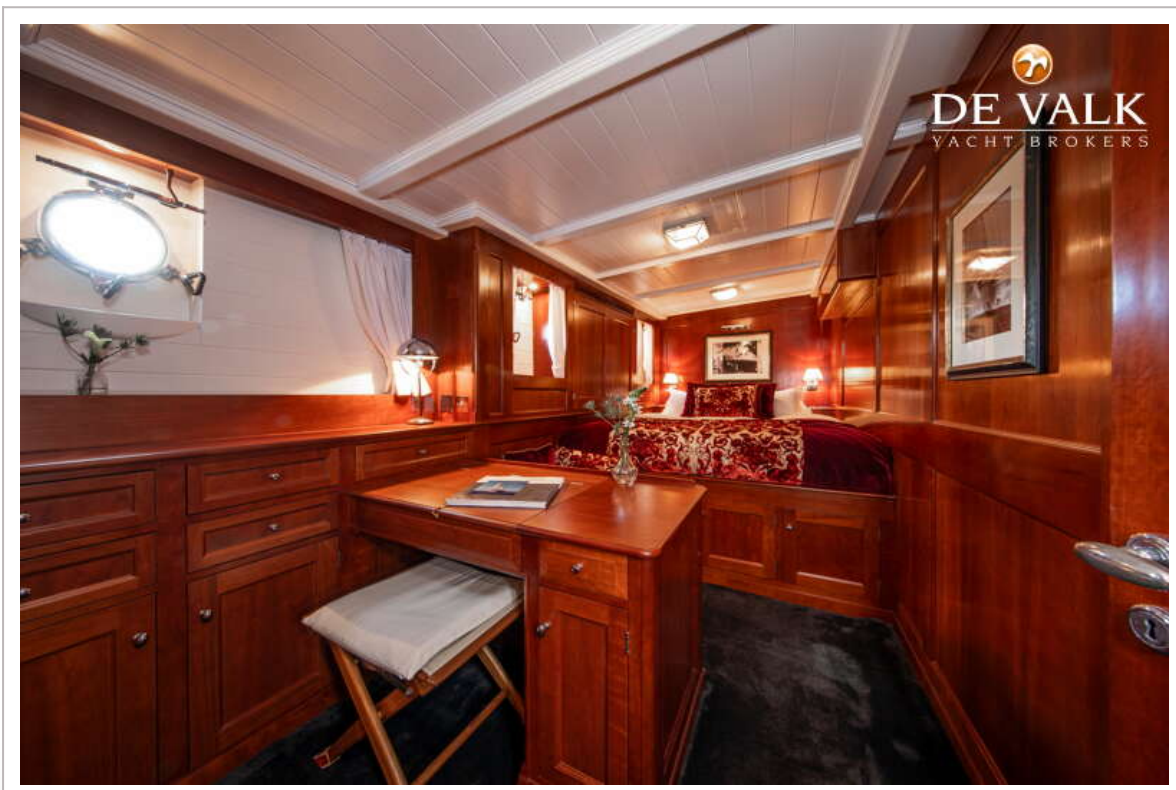
FEADSHIP KETCH



FEADSHIP KETCH



FEADSHIP KETCH



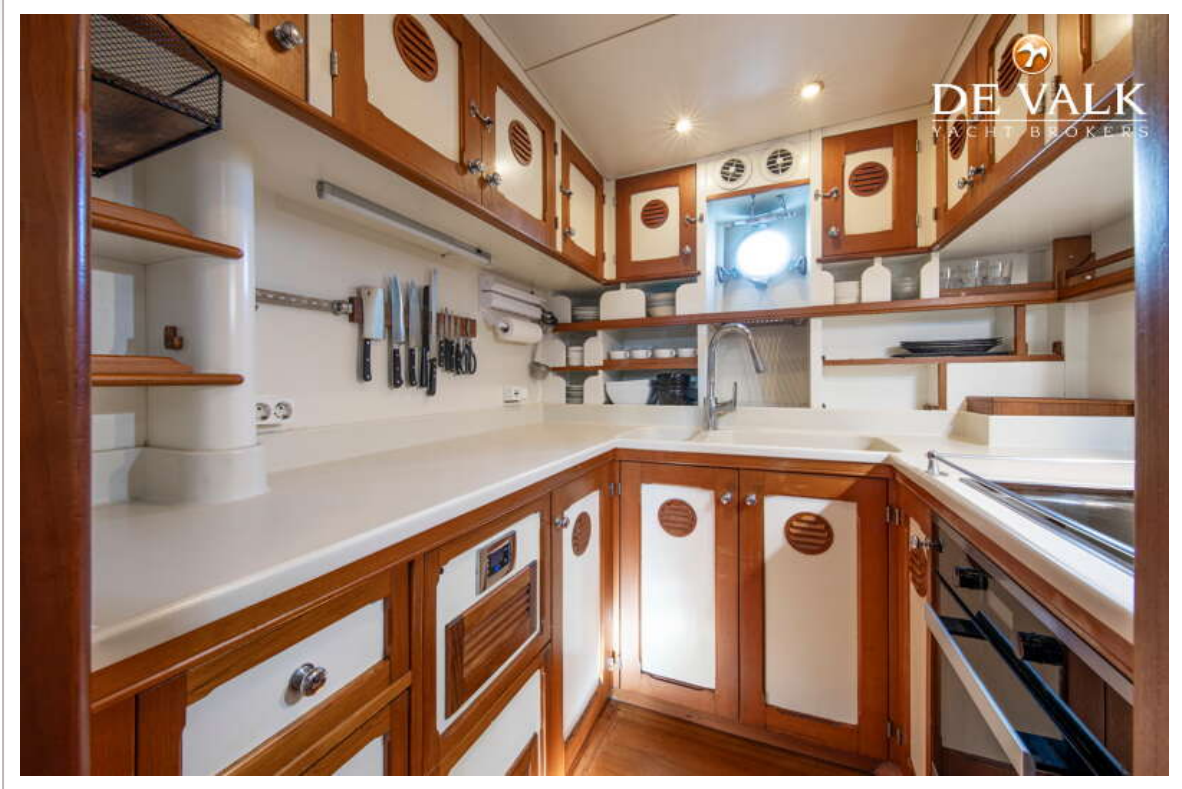
FEADSHIP KETCH



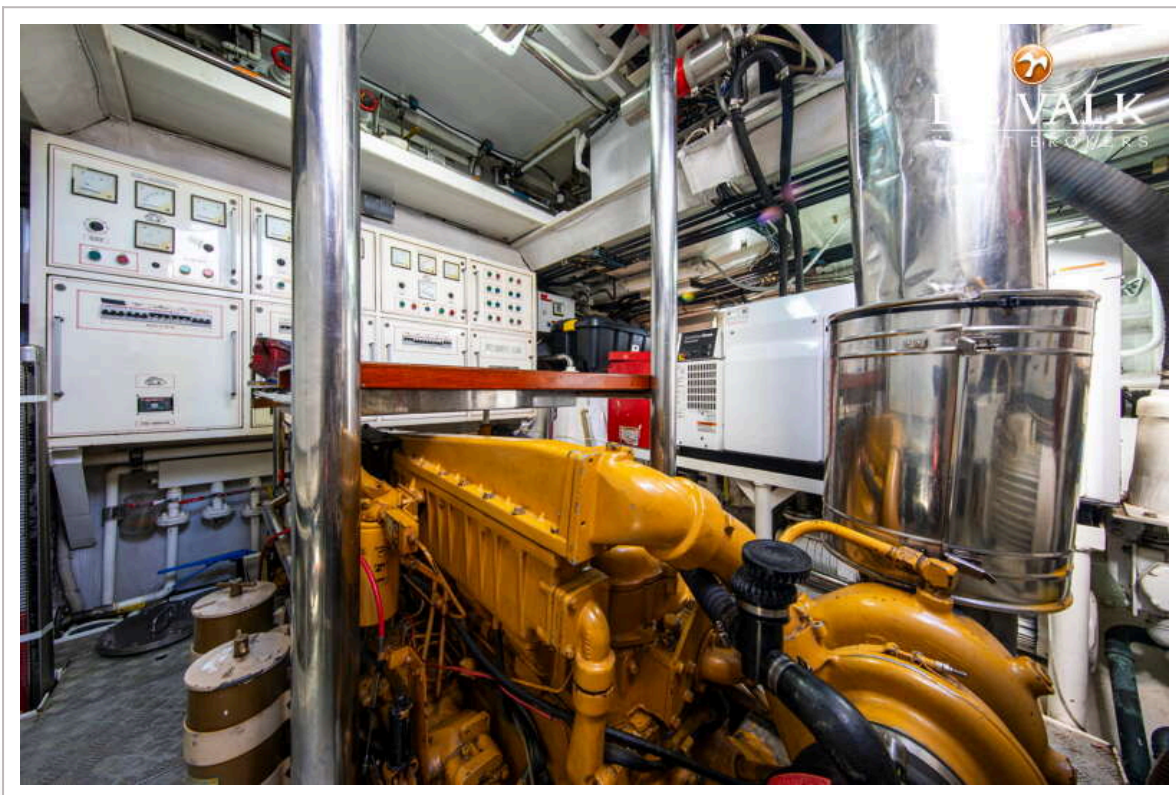
FEADSHIP KETCH



FEADSHIP KETCH



FEADSHIP KETCH



FEADSHIP KETCH

