



## ALMARINE DOLPHIN 1600

# ALMARINE DOLPHIN 1600

## BROKER'S COMMENTS

The Almarine 1600 is a motor yacht with ideal features for longer stays on board or even to live on it. The kitchen is mounted in a unique place, in the converted aft cabin. Spacious owner's cabin, guest cabin and also a walk-in dressing room. Enjoy sailing with your family, live on board or use it to work, it's all possible on this special Almarine. She will be auctioned on 18 oktober, 2021 in cooperation with YachtBid and BVA Auctions. For further details and viewing days go <https://bit.ly/Almarine> . Starting price of the auction is € 100.000,-. Offers can be made on the website of BVA.

*Arjen Hoeksma*

## SPECIFICATIONS

<b>Dimensions</b>	16.47 x 5.47 x 1.30 (m)	<b>Builder</b>	Het Wargaren
<b>Built</b>	2002	<b>Cabins</b>	2
<b>Material</b>	Steel	<b>Berths</b>	6
<b>Engine(s)</b>	2 x Iveco Aifo 8060 SM diesel	<b>Hp/Kw</b>	2 x 210.00 (hp), 154.35 (kw)
<b>Asking price</b>	sold (VAT )	<b>Lying</b>	at sales office

## CONTACT

<b>Sales office</b>	De Valk Loosdrecht	<b>Telephone</b>	+31 35 582 90 30
<b>Address</b>	't Breukeleveense Meentje 6 1231 LM Loosdrecht / Wijdmeren The Netherlands	<b>E-mail</b>	loosdrecht@devalk.nl

## DISCLAIMER

These particulars are given in good faith as supplied but cannot be guaranteed.



# ALMARINE DOLPHIN 1600

## GENERAL

Model	ALMARINE DOLPHIN 1600
Type	motor yacht
LOA (m)	16,47
Beam (m)	5,47
Draft (m)	1,30
Air draft (m)	5,50
Year built	2002
Launched	2002
Builder	Het Wargaren
Country	The Netherlands
Designer	Hans Alma Bonito Boats
Displacement (t)	40
CE norm	A
Hull material	steel
Hull colour	off-white
Hull shape	hard chine
Superstructure material	steel
Deck material	steel
Cockpit deck finish	
Antifouling (year)	2017
Dorades	yes
Flybridge	yes
Radar arch	
Fuel tank (litre)	steel 2x 1350L
Freshwater tank (litre)	stainless steel 2x 800L
Blackwater tank (litre)	GRP 600L
Greywater tank (litre)	GRP 200L
Wheel steering	
Inside helm position	yes
Outside helm position	



Flybridge helm position

## ACCOMMODATION

Cabins	2
Berths	6
Interior	
Aft deck	yes
Saloon	Sleeping pouf
Headroom saloon (m)	2 +/-
Heating	central heating Kabola EL01B3H TC
Dinette	yes
Opening door to aft deck	yes
Galley	yes
Countertop	corian
Sink	
Oven	yes
Microwave	yes
Microwave/oven combi	Bosch HFT879
Fridge	Bosch 180L
Freezer	yes
Hot water system	220V or central heating
Water pressure system	
Dishwasher	Bosch
Owners cabin	double bed
Wardrobe	hanging/drawers/shelves
Bathroom	shared
Toilet	shared
Toilet system	electric
Wash basin	in the bathroom
Shower	shared
Guest cabin 1	single bed



# ALMARINE DOLPHIN 1 600

Wardrobe	walk-in closet
Guest cabin 2	double bed Sleeper Sofa
Washing machine	Miele combi dryer Novotronic WT 945
Flybridge	yes
Extra info	BBQ Kamado on flybridge
Extra info	1x double sofa bed and 1x sofa bed in lounge

## MACHINERY

No of engines	2
Make	Iveco
Type	Aifo 8060 SM
HP	210
kW	154,35
Fuel	diesel
Maximum speed (kn)	10
Cruising speed (kn)	6,5
Consumption (l/hr)	7
Engine hours	310/306
Drive	shaft
Engine controls	electrical Morse KE-4A with Hydronautica remote control
Gearbox	Twin Disc TM 170
Bowthruster	electric 2x Optima Blue Top Ah 24V, Hydronautica
Sternthruster	electric 2x Optima Blue Top 75 Ah 24V, Hydronautica
Propeller type	fixed Bronze
Propeller shaft material	55mm Stainless steel shaft
Generator	Mastervolt Whisper 12000 with Optima Top 75 Ah battery
Running hours generator	650
Service battery	6x Beaut AGM 260Ah 24V
Battery monitor	Mastervolt Power System Control
Battery charger	Mastervol 24V/75A
Inverter	Mastervolt 6000 W 24V



# ALMARINE DOLPHIN 1600

**Battery charger/inverter**

Mastervolt Mass 24V 6.000W

**Extra info**

Victron battery charger 24V 16 A 3 outputs

## NAVIGATION

**VHF**

Shipmate RS 8300

**Plotter/GPS**

In and outside Simrad CX44

## EQUIPMENT

**Anchor**

Front ant aft deck

**Anchor chain**

yes

**Windlass**

Horizon 1500 ( engine 2020)

**Windlass aft**

Horizon 1500

**TV**

In Saloon Samsung UE46EH5000

**Speakers in salon**

Bluetooth speakers





BROKERAGE | CHARTER | BERTHS | FINANCE | INSURANCE | YACHT MANAGEMENT



**DE VALK**  
YACHT BROKERS



**This yacht will be auctioned,  
for further details please visit [www.devalk.nl](http://www.devalk.nl)**

**Dit schip zal worden geveild,  
voor meer informatie gaat u naar [www.devalk.nl](http://www.devalk.nl)**

**Dieses Schiff wird versteigert,  
für weitere informationen besuchen Sie [www.devalk.nl](http://www.devalk.nl)**

[WWW.DEVALK.NL](http://WWW.DEVALK.NL)



**DE VALK**  
YACHT BROKERS





# ALMARINE DOLPHIN 1600





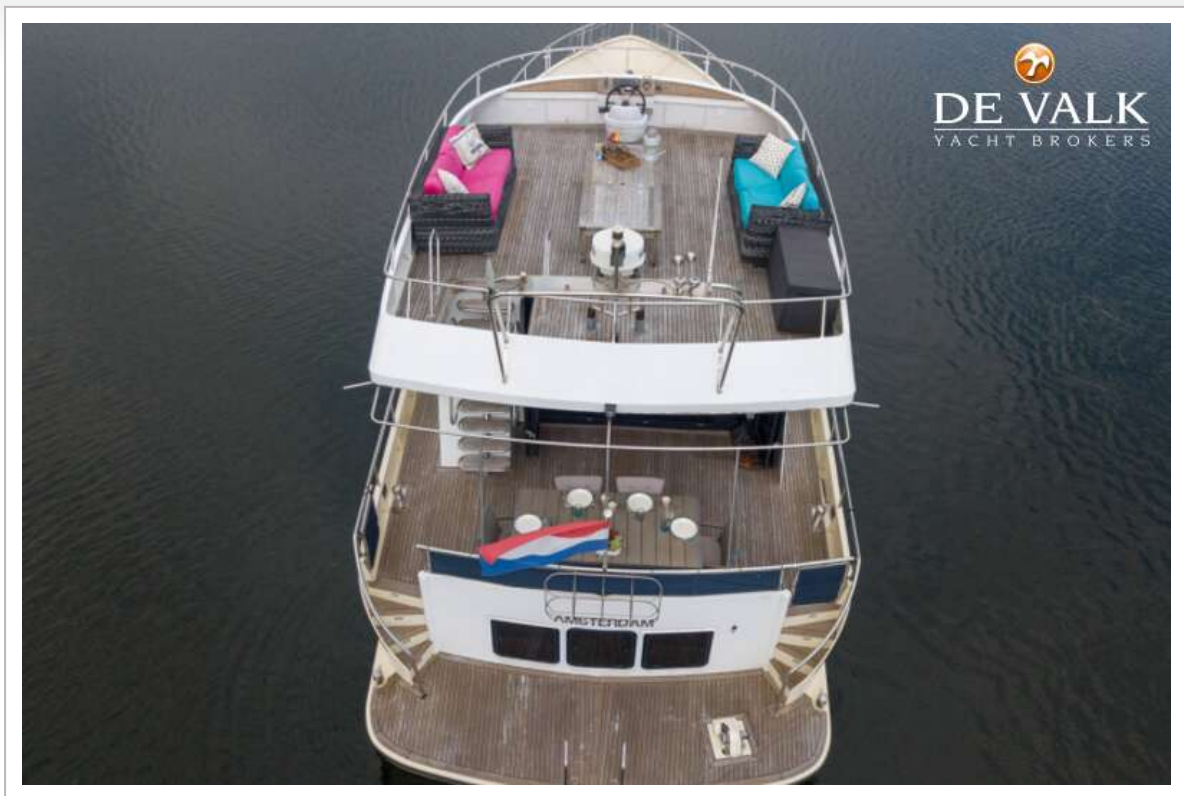
# ALMARINE DOLPHIN 1600



# ALMARINE DOLPHIN 1600



# ALMARINE DOLPHIN 1600





# ALMARINE DOLPHIN 1600

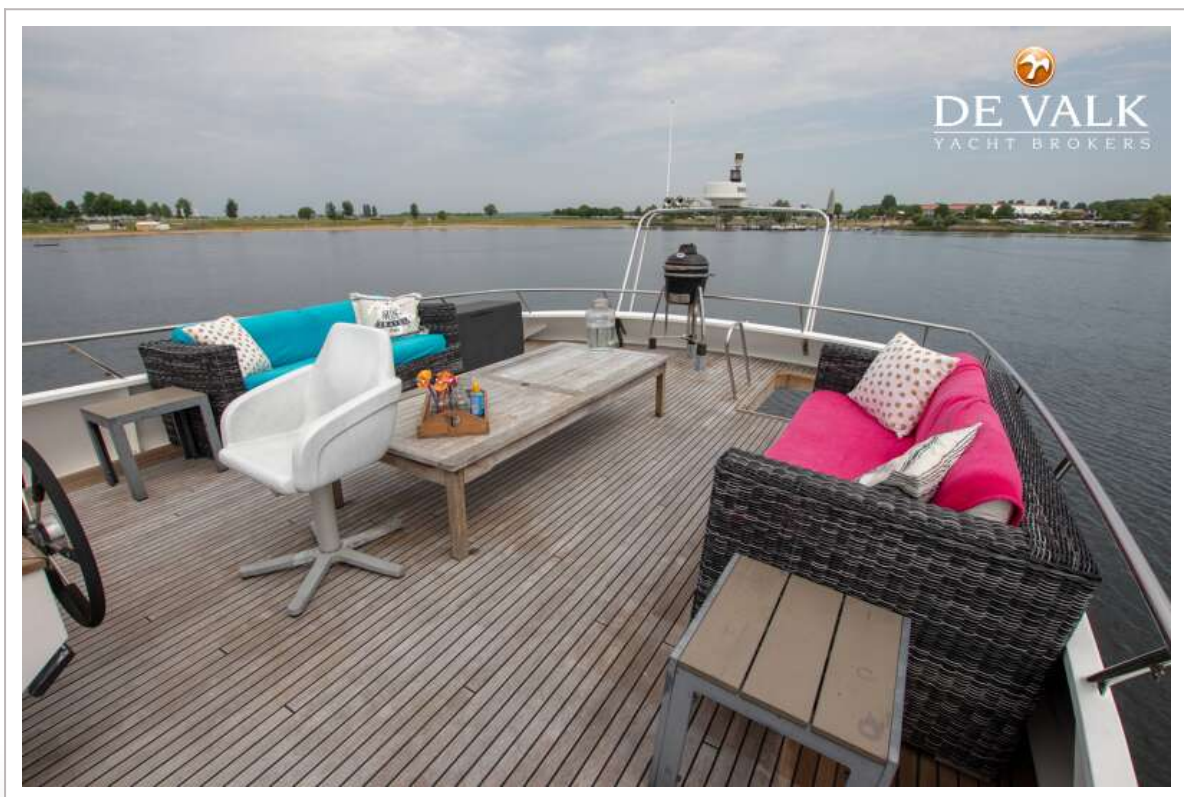
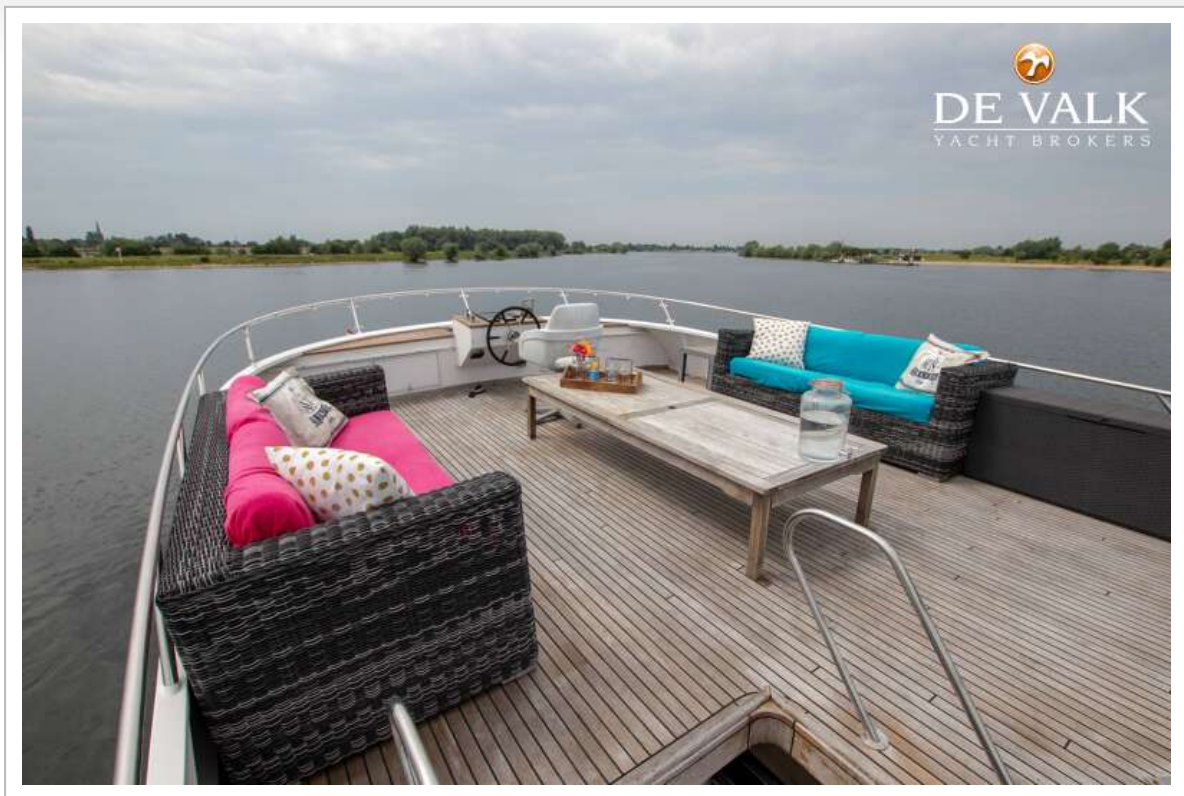


# ALMARINE DOLPHIN 1600

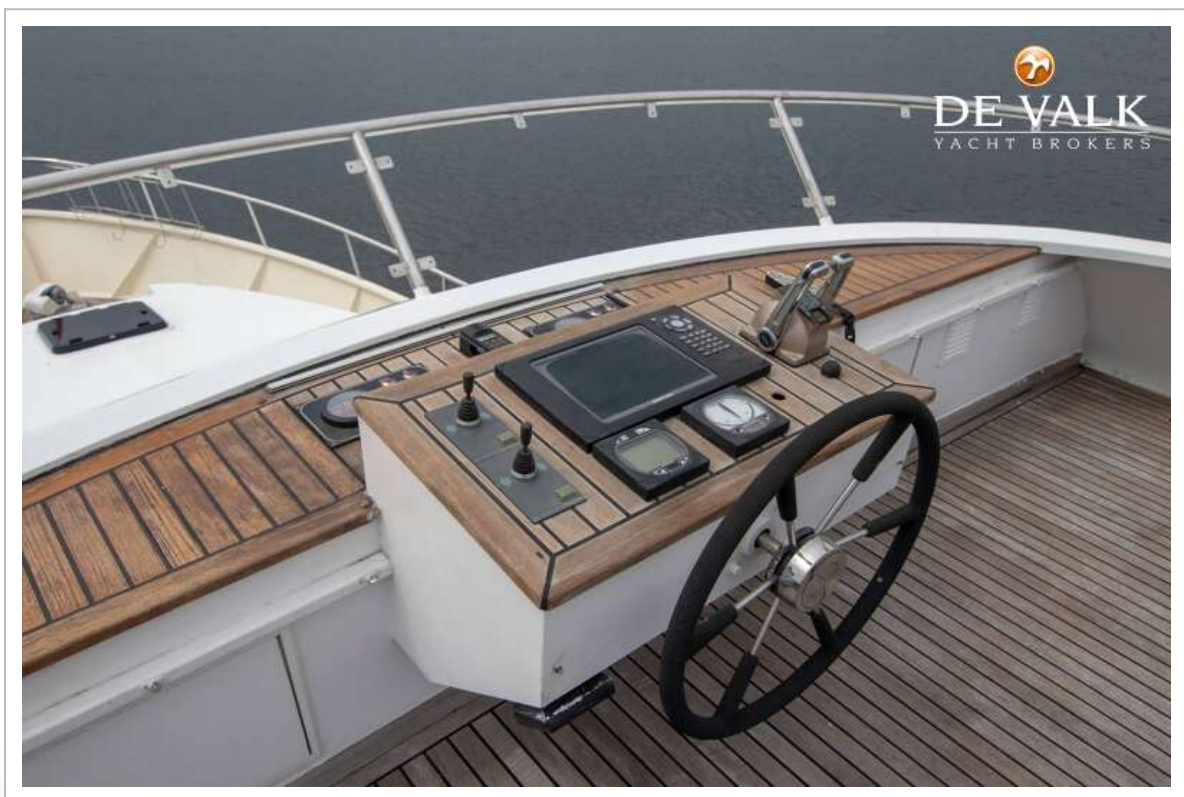
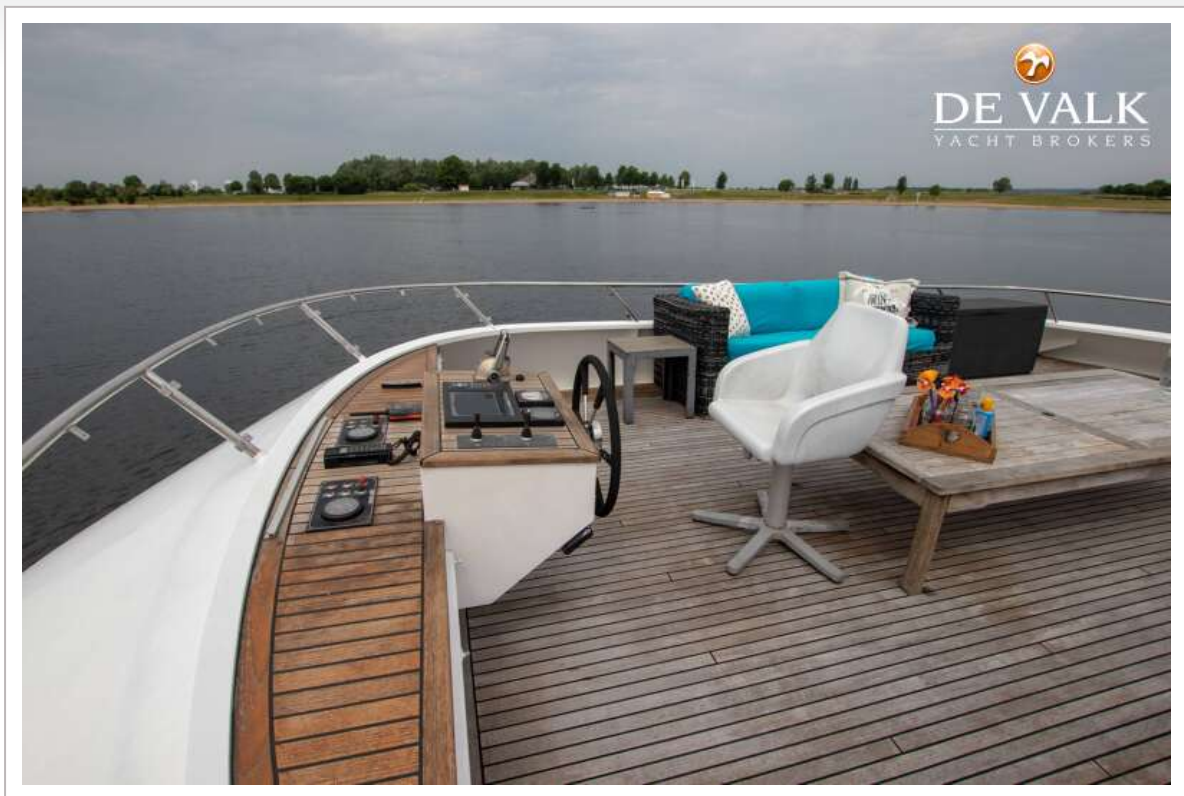




# ALMARINE DOLPHIN 1600

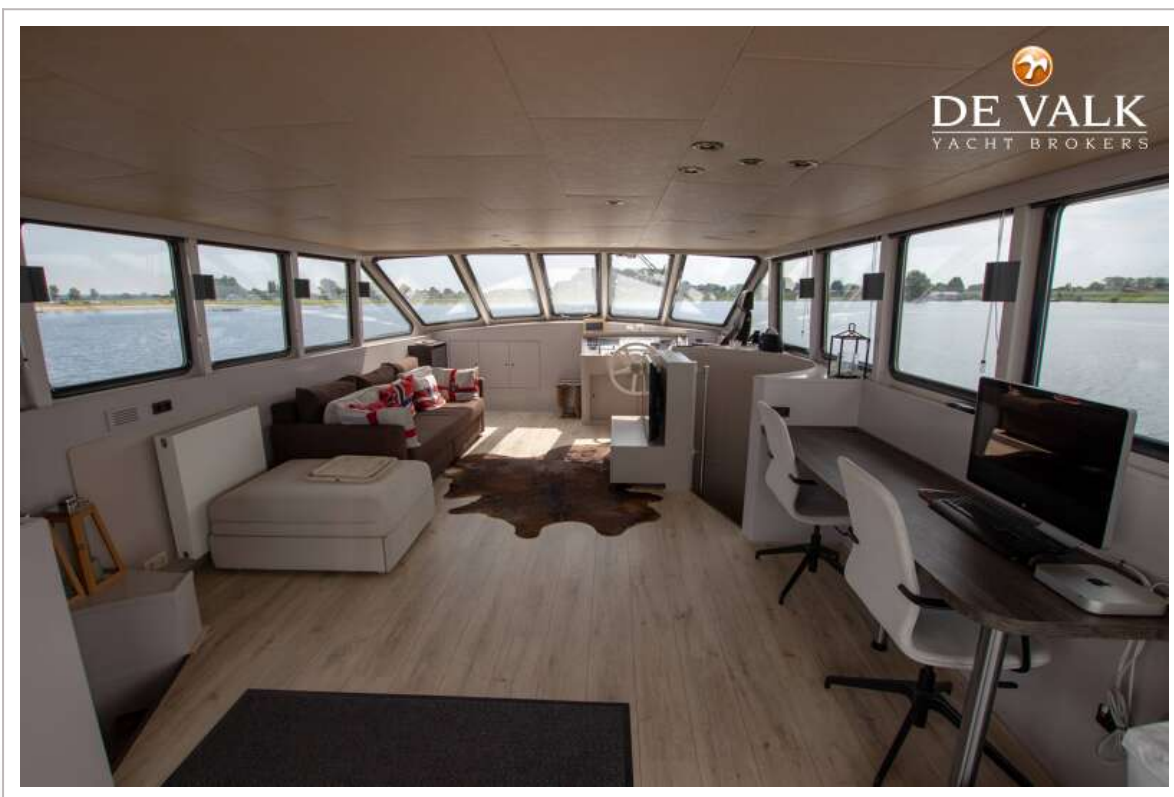


# ALMARINE DOLPHIN 1600

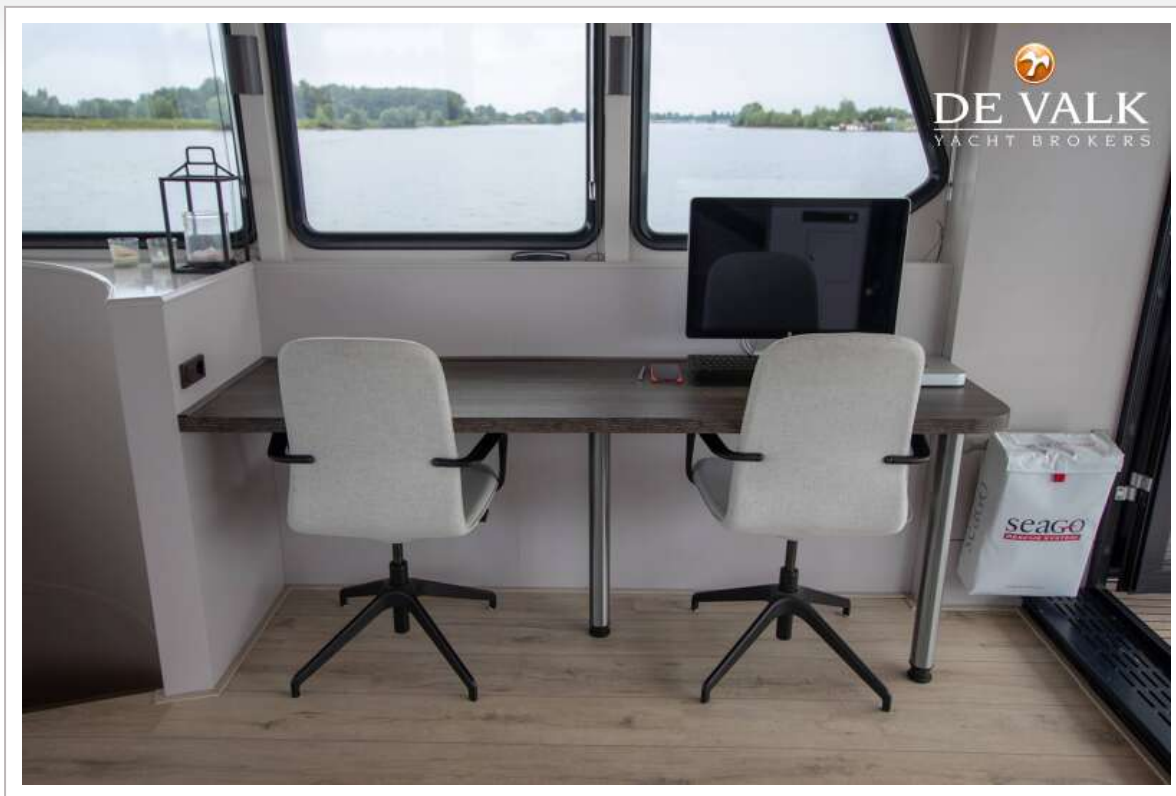




# ALMARINE DOLPHIN 1600



# ALMARINE DOLPHIN 1600

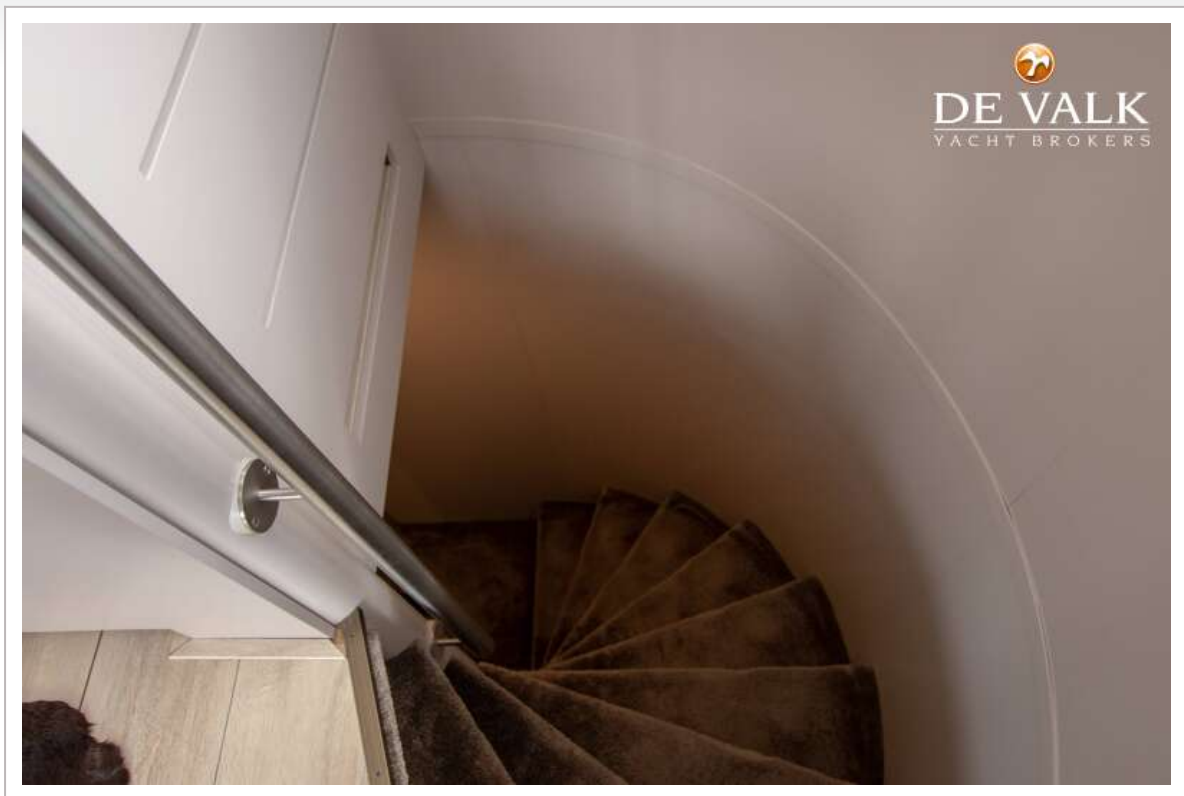




# ALMARINE DOLPHIN 1600



# ALMARINE DOLPHIN 1600

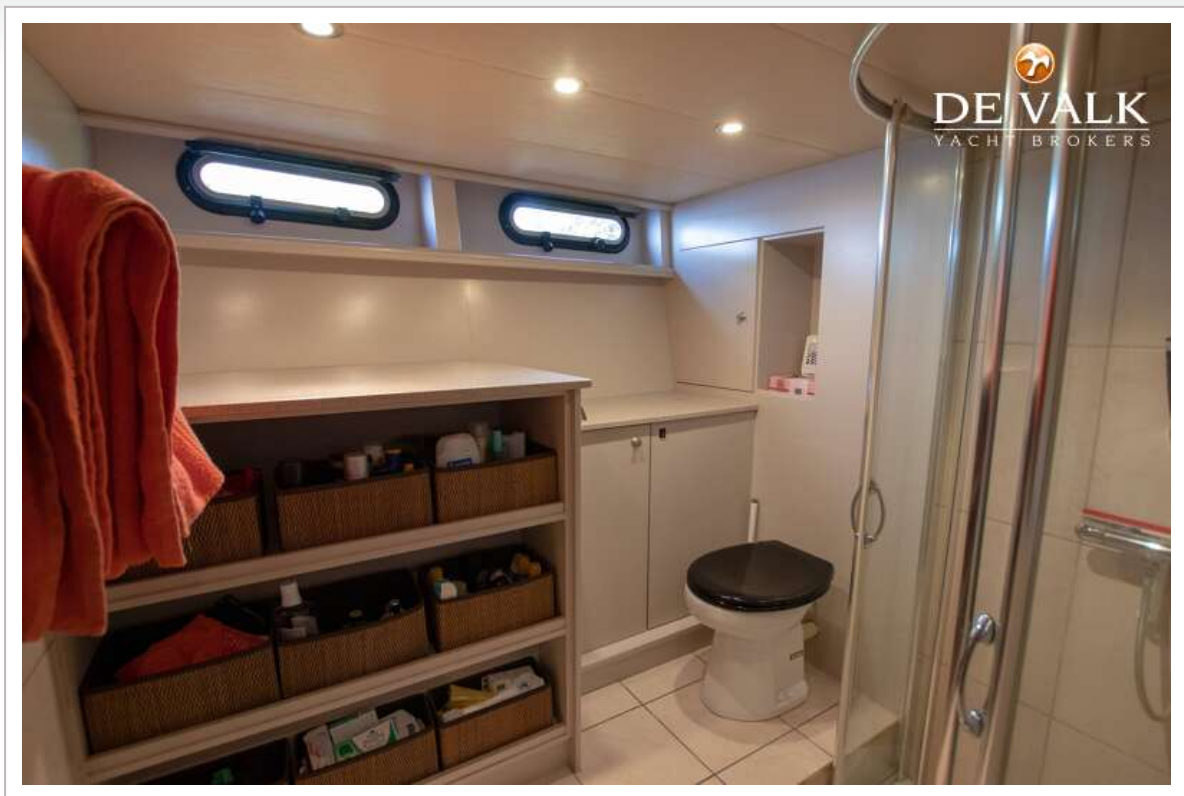


# ALMARINE DOLPHIN 1600





# ALMARINE DOLPHIN 1600

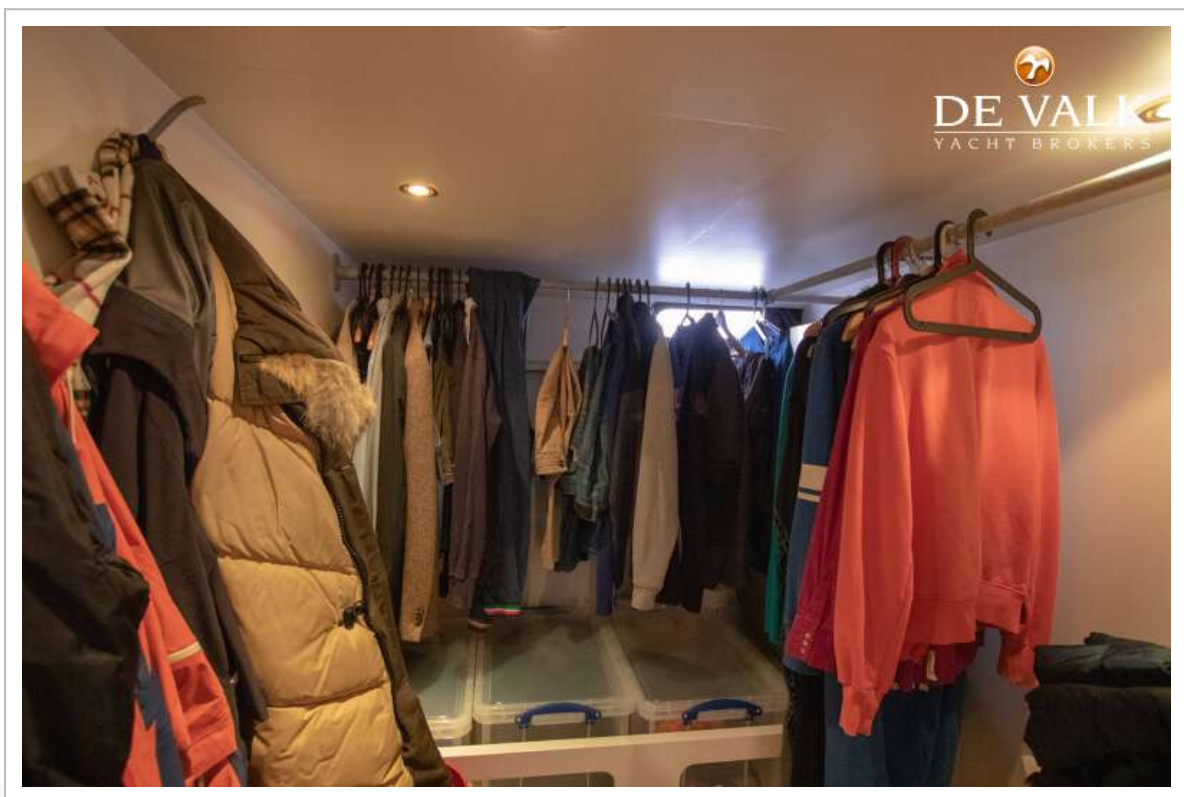


# ALMARINE DOLPHIN 1600

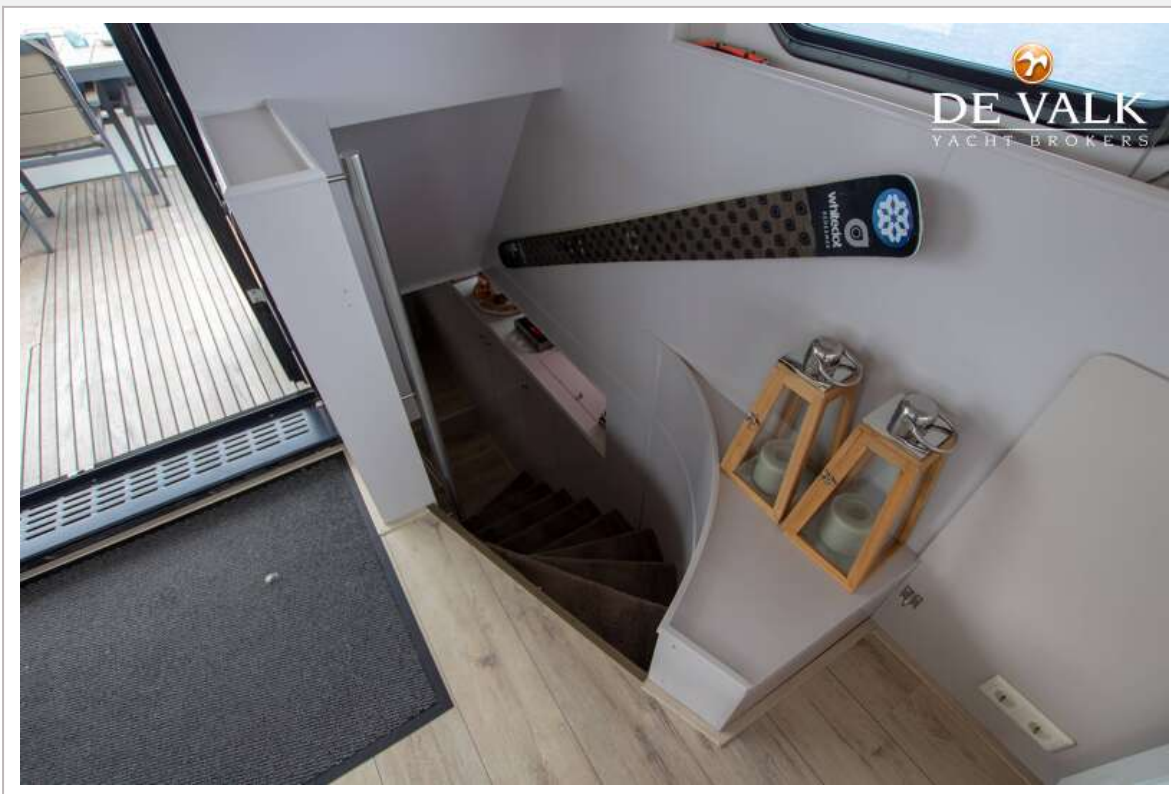




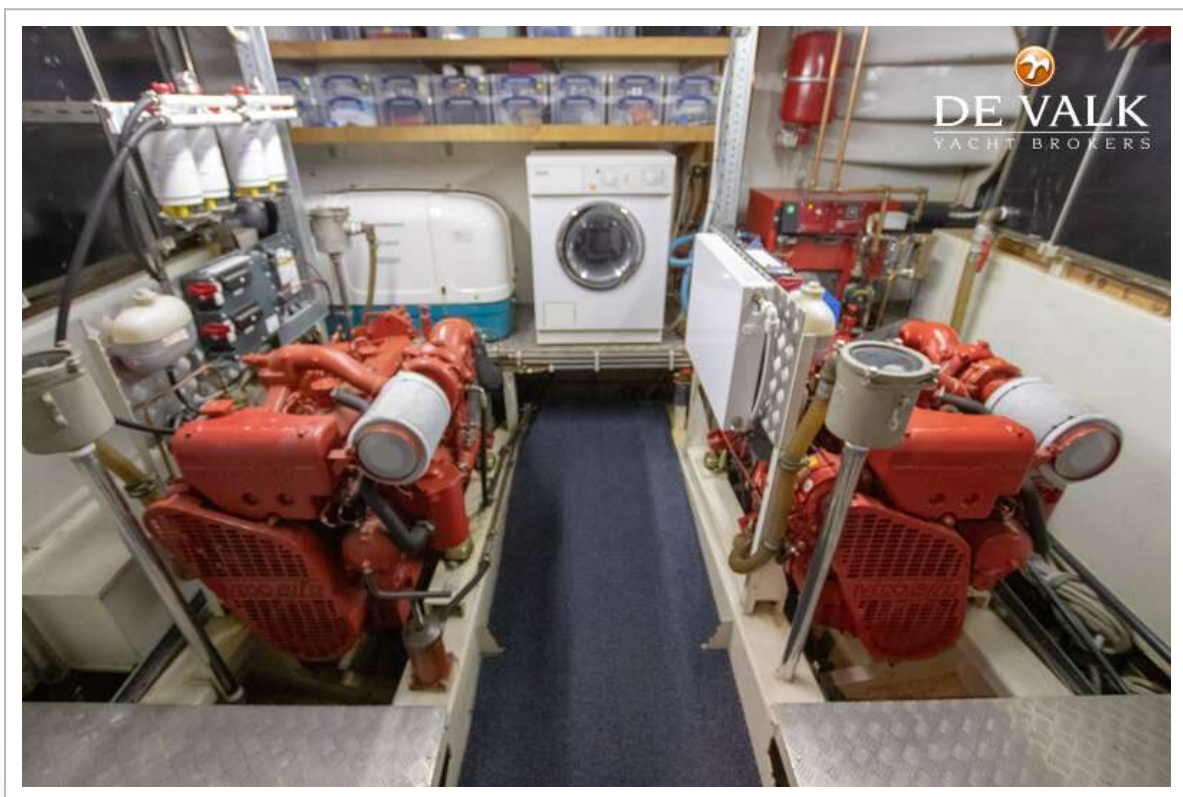
# ALMARINE DOLPHIN 1600



# ALMARINE DOLPHIN 1600

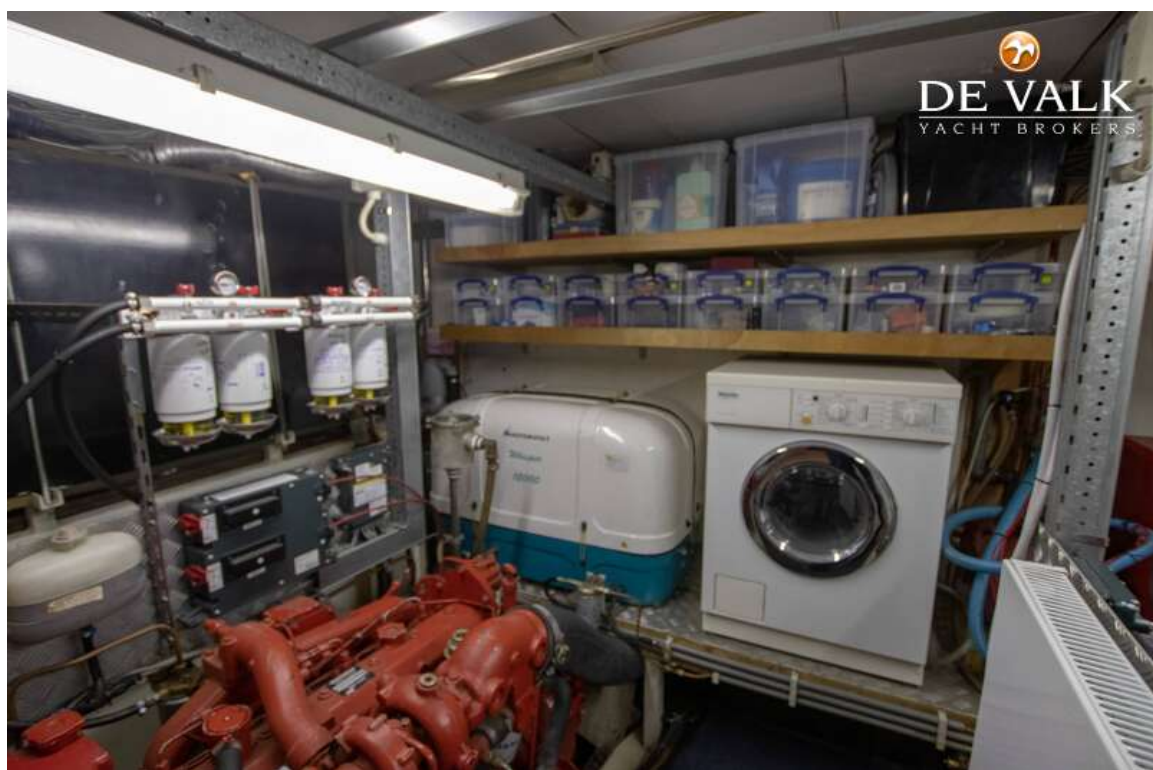


# ALMARINE DOLPHIN 1600

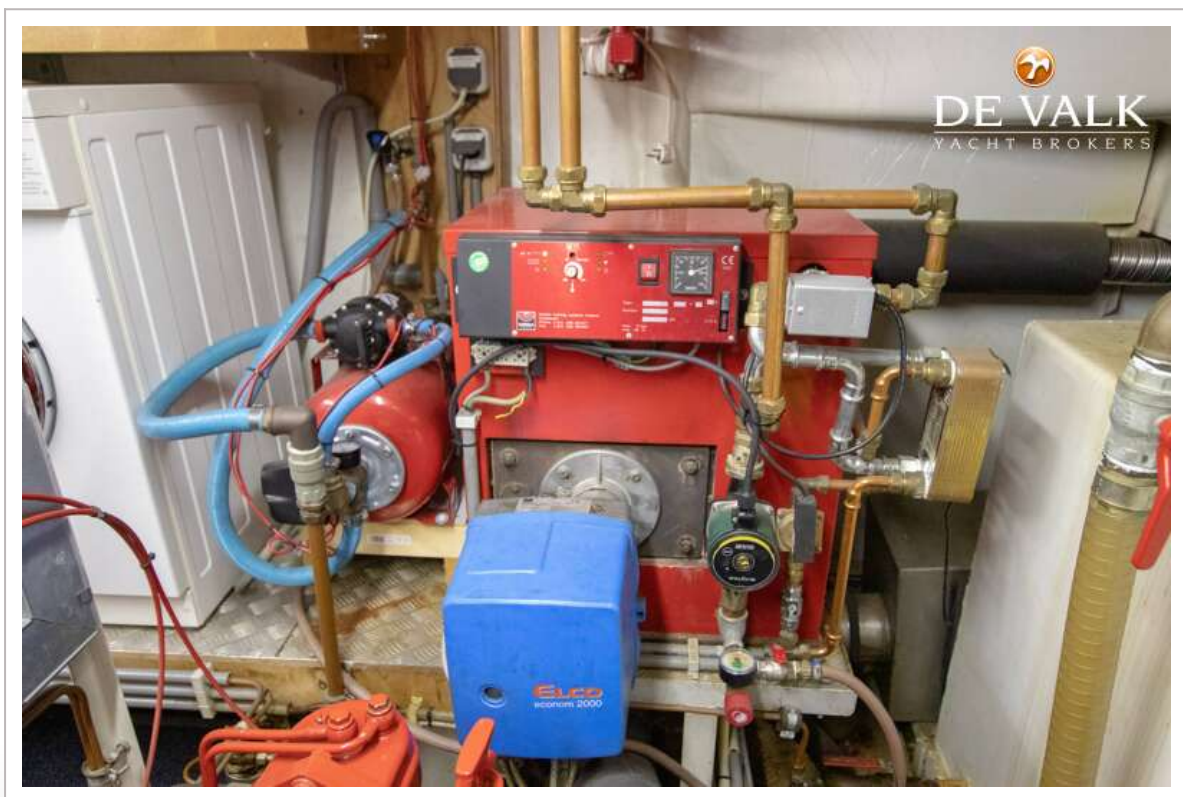




# ALMARINE DOLPHIN 1600



# ALMARINE DOLPHIN 1600





# ALMARINE DOLPHIN 1600

