



DE VALK
YACHT BROKERS



ALFA MARINE 140



DE VALK
YACHT BROKERS

ALFA MARINE 140

BROKER'S COMMENTS

Built in 2003 , this Alfa marine 140 is a very comfortable Tri-Deck Motor Yacht. Alfa Marine Shipyard was established in 1955. She is well suitable for long range cruises or charter. Refitted in 2013 and 2017. Please contact us for more details.

Hans Visser

SPECIFICATIONS

Dimensions	42.50 x 8.70 x 2.50 (m)	Builder	Alfa Marine
Built	2003	Cabins	6
Material	Aluminium	Berths	12
Engine(s)	2 x MTU 12V4000 diesel	Hp/Kw	2 x 2,775.00 (hp), 2,039.63 (kw)
Asking price	\$ 3.900.000 (VAT Not paid)	Lying	contact Amsterdam

CONTACT

Sales office	De Valk Sneek	Telephone	+31 515 42 80 30
Address	Zwolsmanweg 7 8606 KC Sneek The Netherlands	E-mail	sneek@devalk.nl

DISCLAIMER

These particulars are given in good faith as supplied but cannot be guaranteed.



ALFA MARINE 140

GENERAL

Model	ALFA MARINE 140
Type	motor yacht
LOA (m)	42,50
Beam (m)	8,70
Draft (m)	2,50
Year built	2003
Builder	Alfa Marine
Country	Italy
Designer	Andrea Bacigalupo
Displacement (t)	240
Hull material	aluminium
Hull colour	white
Superstructure material	aluminium
Deck material	aluminium
Deck finish	teak
Cockpit deck finish	teak
Flybridge	yes
Fuel tank (litre)	31600
Freshwater tank (litre)	7200
Blackwater tank (litre)	700
Greywater tank (litre)	1400
Inside helm position	yes

ACCOMMODATION

Cabins	6
Berths	12
Crew cabin	4
Aft deck	yes
Pilot house	yes
Saloon	yes



ALFA MARINE 140

Heating	Reverse airco
Air-conditioning	480000BTU Condaria
Dinette	yes
Galley	yes
Cooker	Miele
Oven	Miele
Extractor	yes
Microwave	yes
Fridge	2
Freezer	2
Hot water system	2x300 ltr 3kw boiler
Dishwasher	yes
Toilet	13 x vacu flush
Bath tub	
Jacuzzi	yes
Washing machine	2
Dryer	2
Flybridge	Sunbathing + Jacuzzi

MACHINERY

No of engines	2
Make	MTU
Type	12V4000
HP	2775
kW	2039.63
Fuel	diesel
Year installed	2003
Year of overhaul	report upon request 2013 / 2017
Maximum speed (kn)	17
Cruising speed (kn)	13
Consumption (l/hr)	300



ALFA MARINE 140

Range (nm)	2000
Engine hours	3223
Drive	shaft
Engine controls	electrical
Bowthruster	50 KW 4RN2
Gearbox	hydraulic ZF V Drive
Propeller type	fixed
Propeller blades	4
Bilge alarm	yes
Generator	
Running hours generator	8800
Generator 2	
Battery charger	MV 75+75+25 Amp
Inverter	100 KW
Watermaker	2 x 600 ltr Idromar
Stabilizers	Koopnautic Zero speed
Extra info	Range 1000/13 & 2000/10
Extra info	Consumption 900/17 & 300/13 & 150/10

NAVIGATION

Compass	SR180 Gyroscopic
Depth sounder	JRC FF50
VHF	Sailor C4900 + RT422
Autopilot	C-Plath
Radar	Decca
GPS	JRC Nav 500
Plotter	JTC Plot 700FX
Weather receiver	JRC NCR330
Personal computer	HP Navigation computer
AIS receiver	SAAB
EPIRB	yes



Extra info	Sailor HC4500 SSB Radio
Extra info	TT3020 Satellite radio

EQUIPMENT

Bimini	yes
Sun awning	yes
Cockpit cushions	yes
Cockpit table	yes
Bathing platform	yes
Boarding ladder	aluminum
Gangway	Sancuineti
Deck shower	yes
Capstan	2
Windlass aft	2
Deck wash	yes
Dinghy	
Deck crane	hydraulic 1000 kg
Life raft	container 4
Life raft (pers)	6
Lifejackets	yes
Horn	
TV	All cabins
Satellite	4006 Sat TV
Radio-cd player	yes
DVD player	yes
Fire extinguisher	yes
Extinguisher in engine room	yes



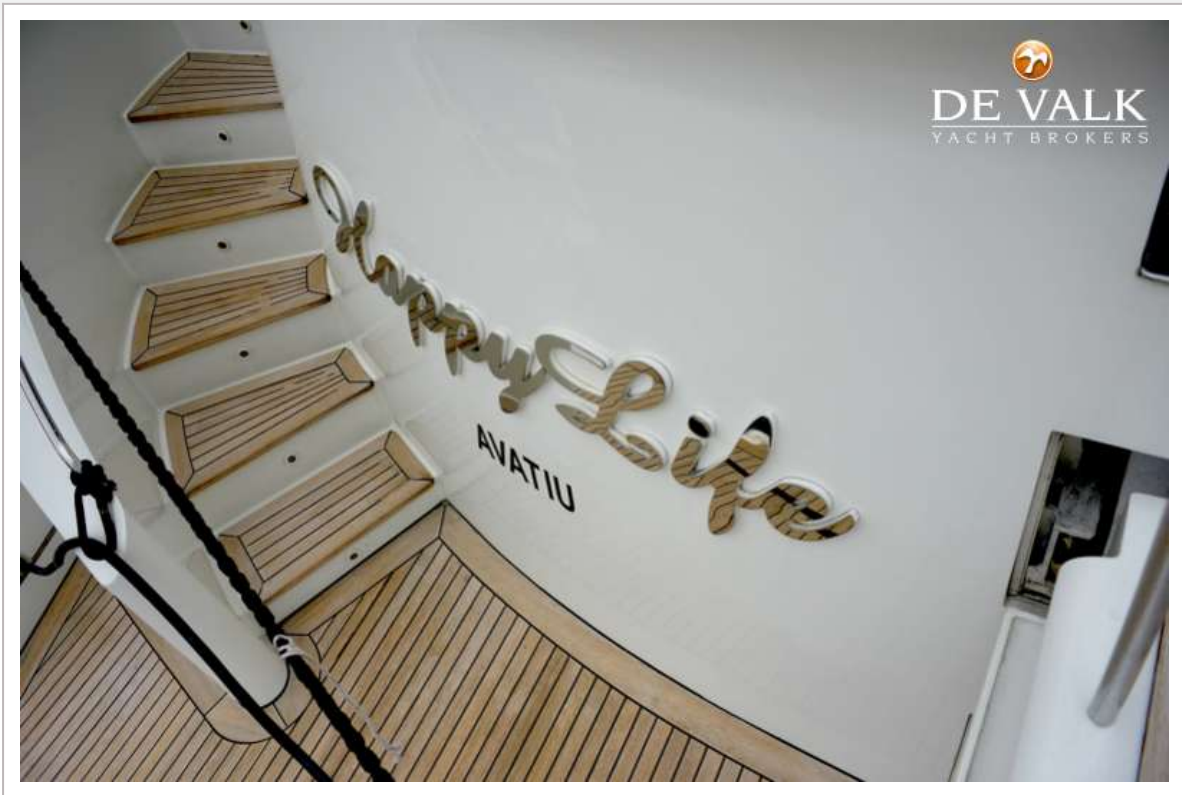
ALFA MARINE 140



ALFA MARINE 140



ALFA MARINE 140



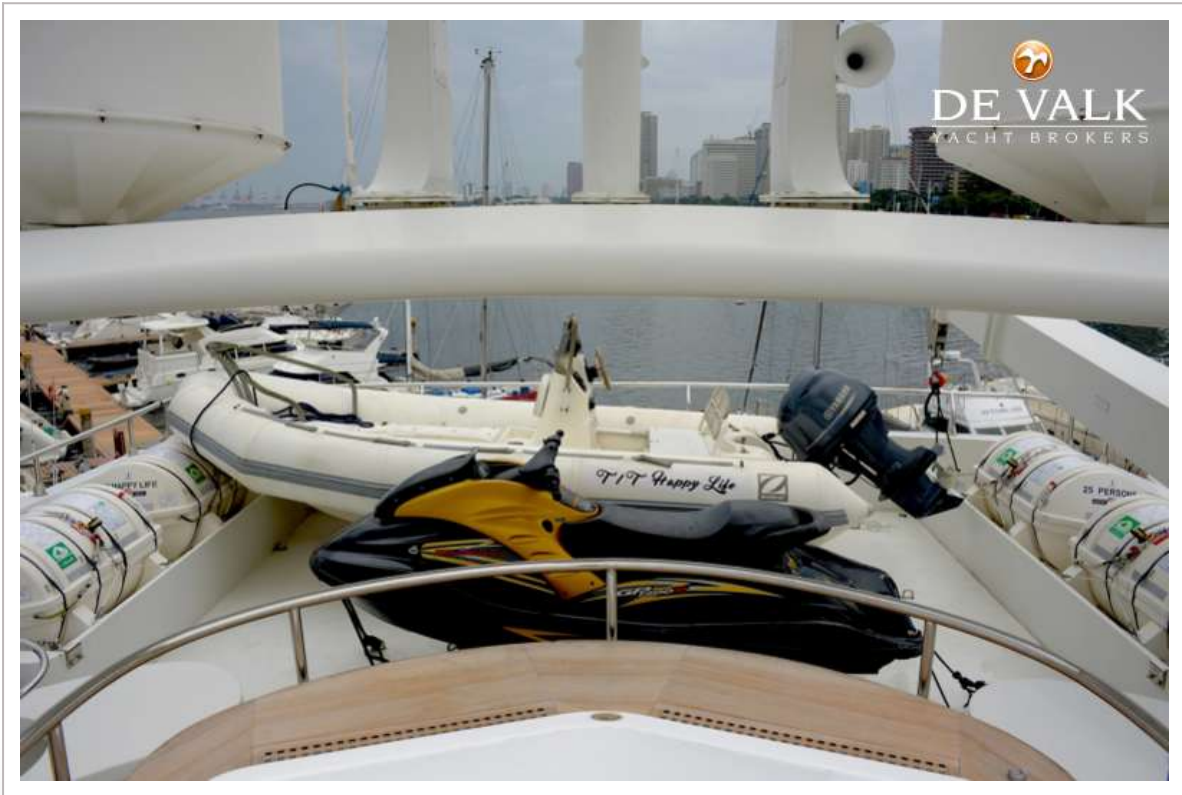
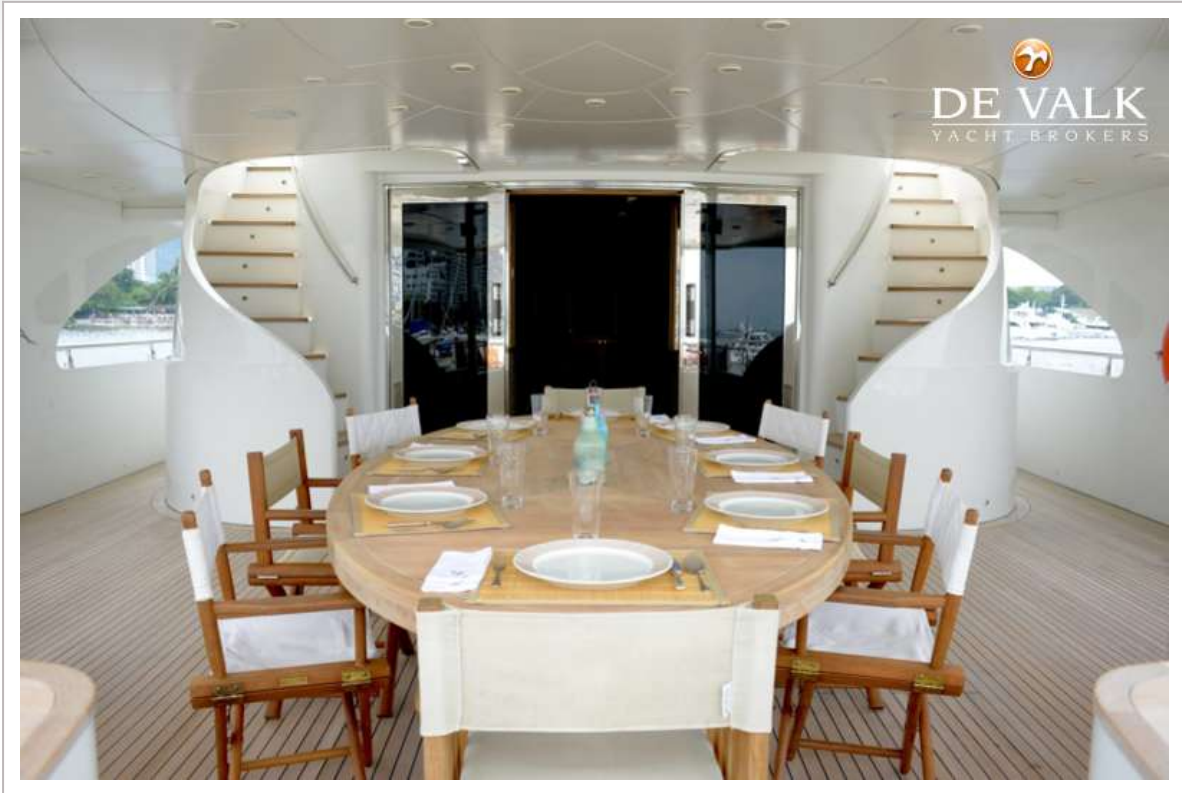
ALFA MARINE 140



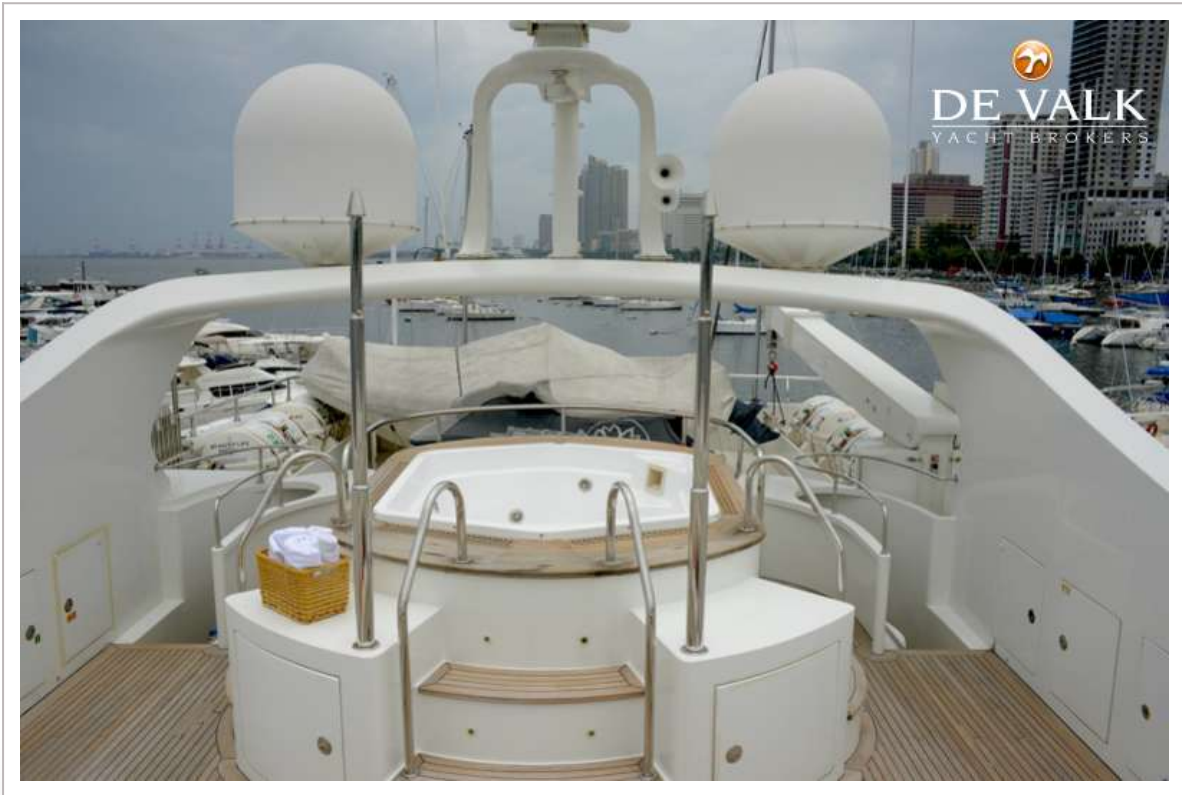
ALFA MARINE 140



ALFA MARINE 140



ALFA MARINE 140



ALFA MARINE 140



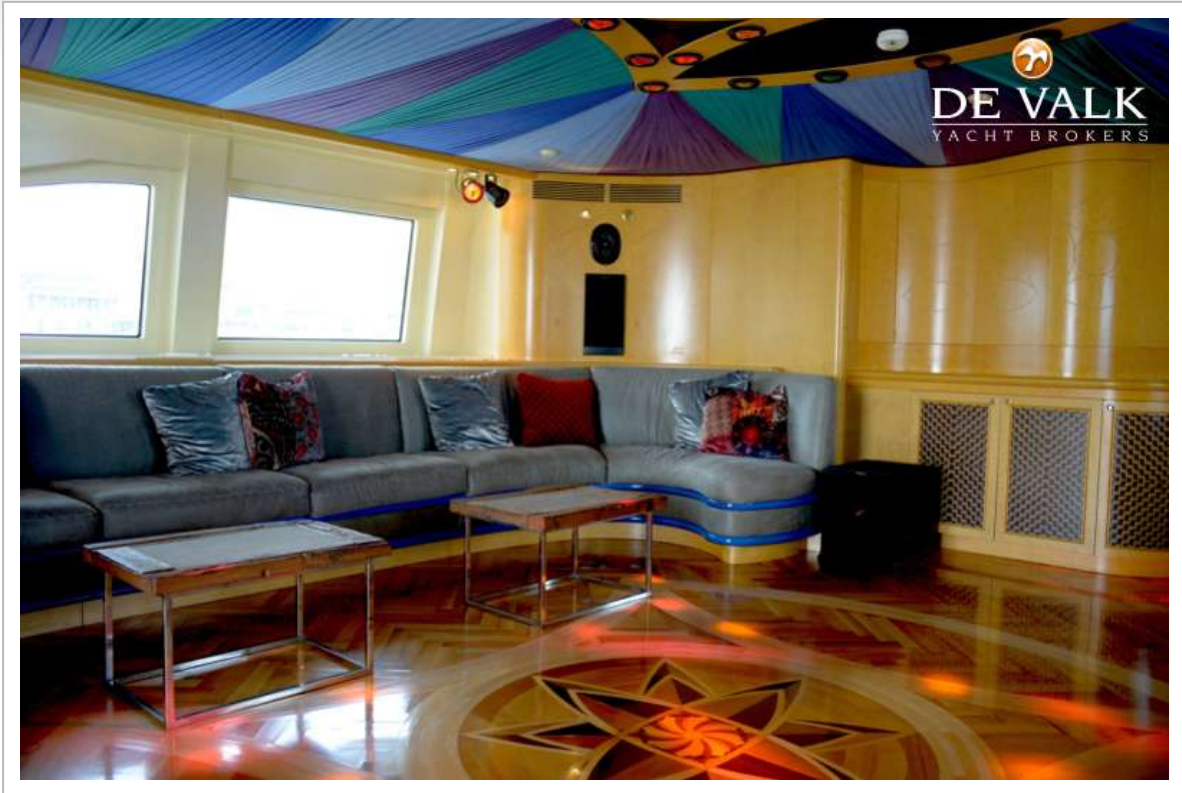
ALFA MARINE 140



ALFA MARINE 140



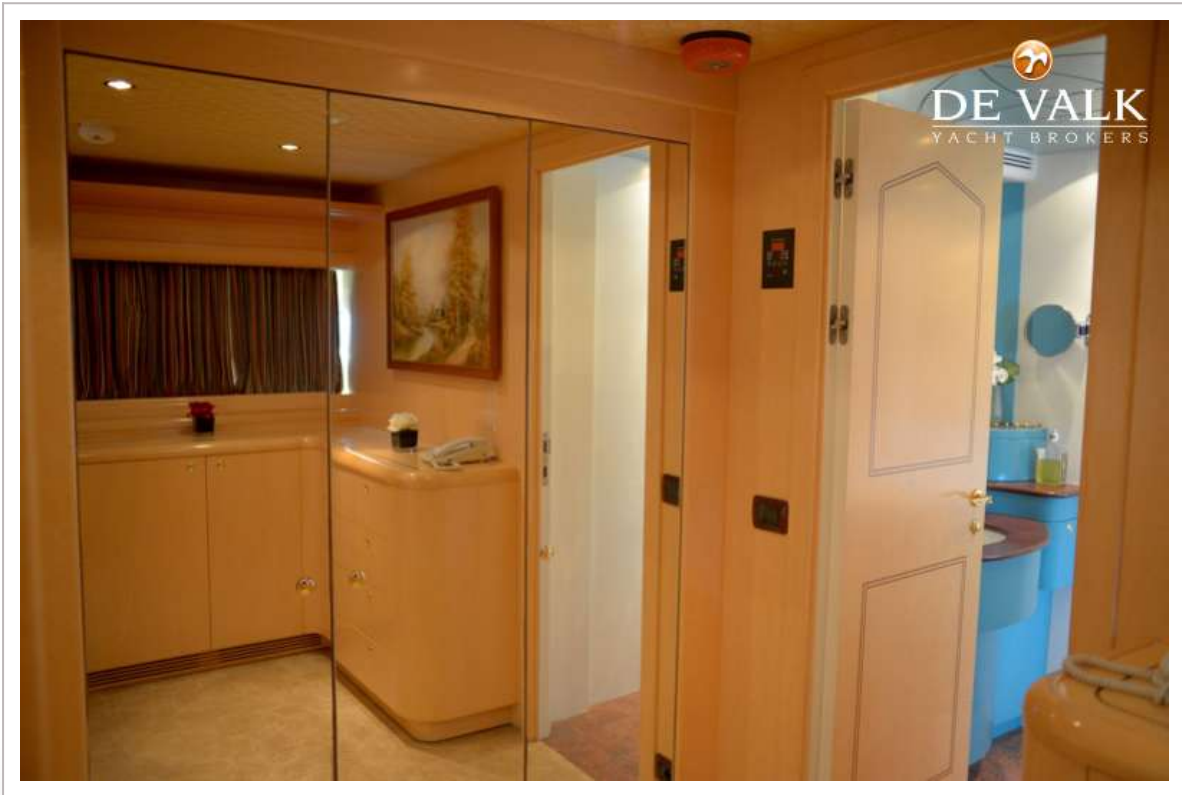
ALFA MARINE 140



ALFA MARINE 140



ALFA MARINE 140



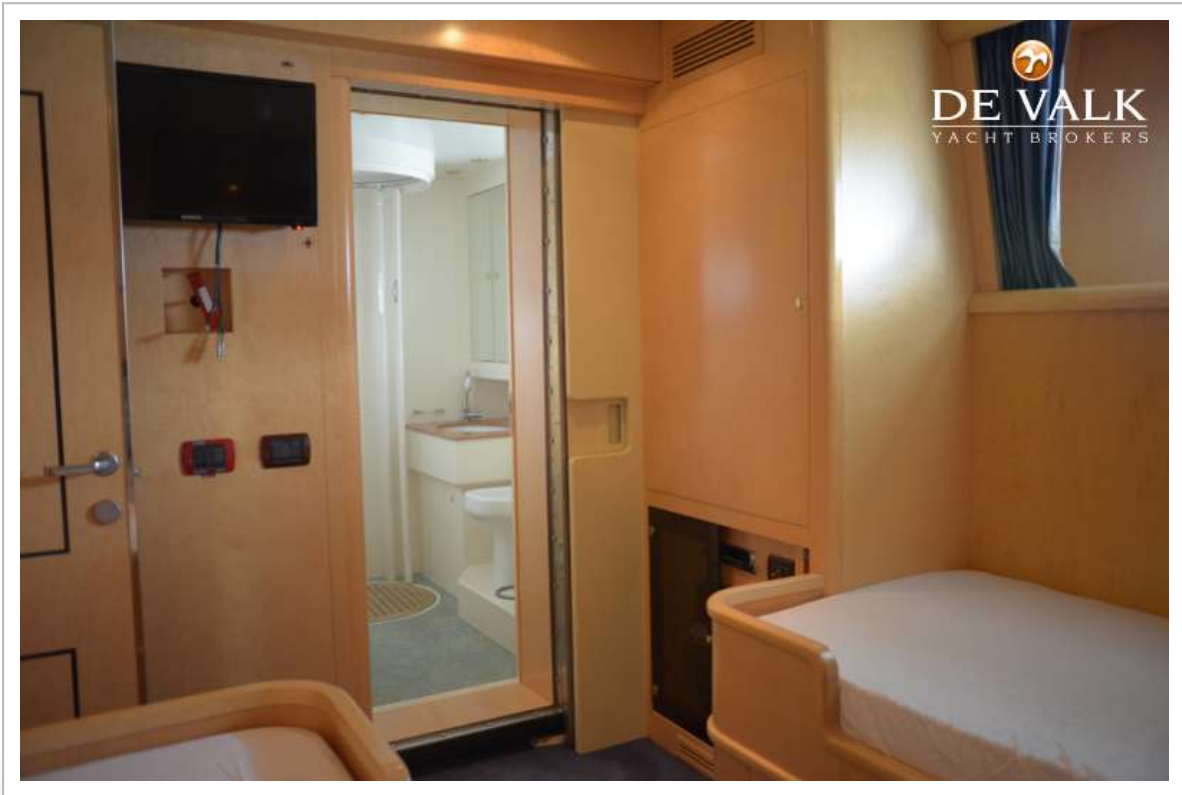
ALFA MARINE 140



ALFA MARINE 140



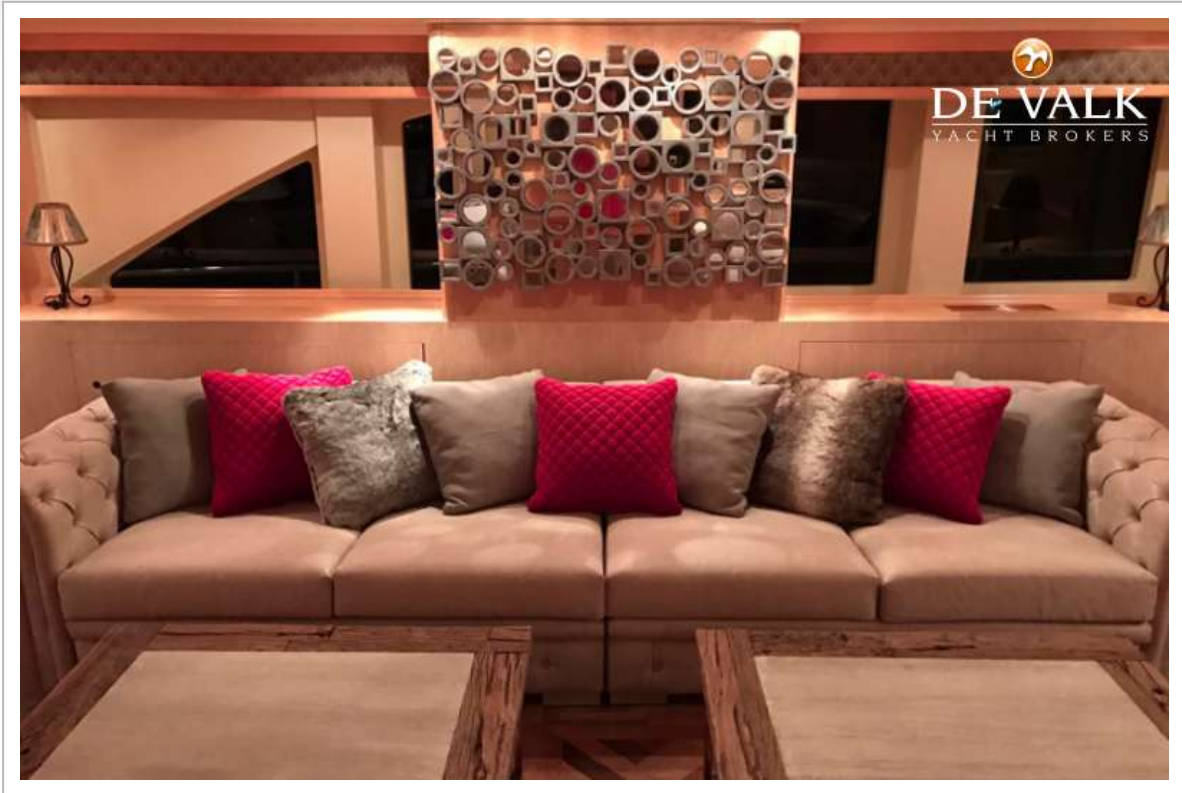
ALFA MARINE 140



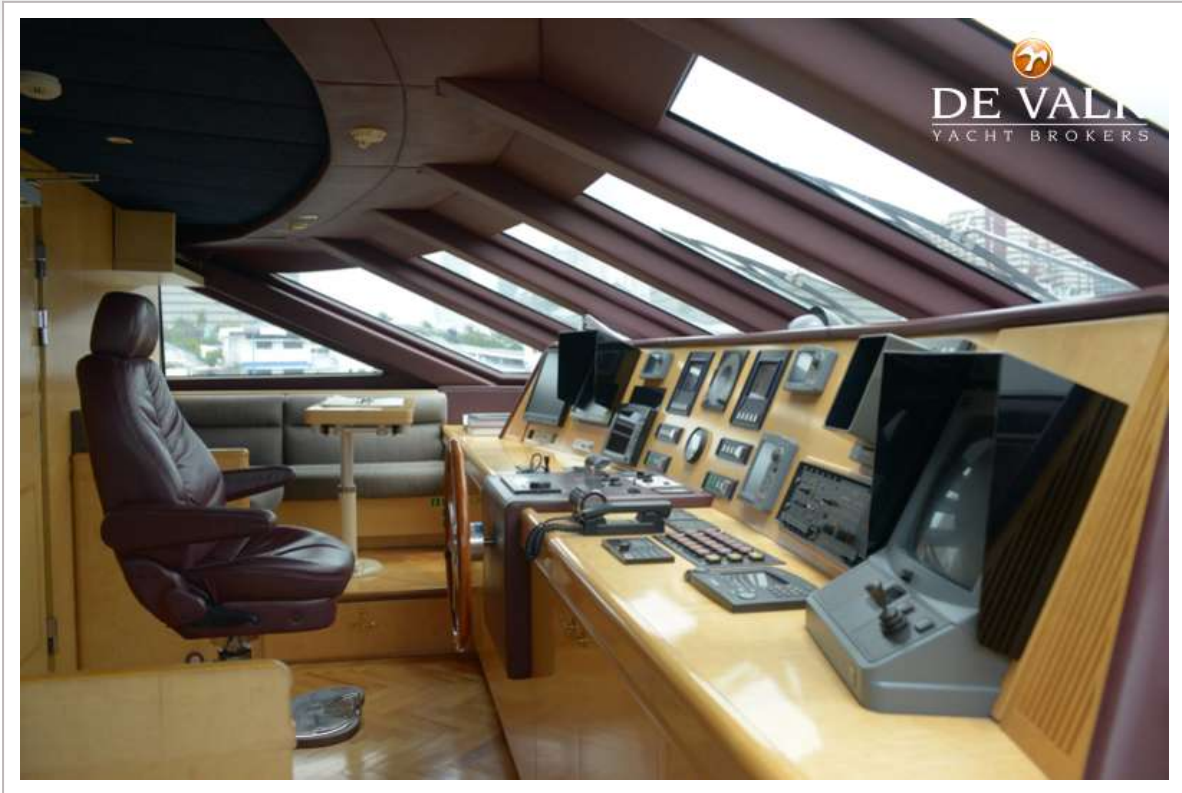
ALFA MARINE 140



ALFA MARINE 140



ALFA MARINE 140



ALFA MARINE 140

