



DE VALK
YACHT BROKERS



X-YACHTS X-37



DE VALK
YACHT BROKERS

X-YACHTS X-37

BROKER'S COMMENTS

From her first owner, a "2 cabin:" version of the X-37. A perfect representative of the X-Yachts experience. The efficient deck layout facilitates the needs of a crew and at the same time allowing for ease of handling when shorthanded cruising. High performance hull with smooth ride in rough seas. Functional and stylish interior. A perfect combination of a comfortable and sporty sailing yacht. She can be seen in our sales marina of Katwoude.

Reinier van der Wolf

SPECIFICATIONS

Dimensions	11.35 x 3.48 x 2.20 (m)	Builder	X-Yachts A/S
Built	2009	Cabins	2
Material	GRP	Berths	6
Engine(s)	1 x Yanmar 3YM30FC diesel	Hp/Kw	29.00 (hp), 21.32 (kw)
Asking price	sold (VAT)	Lying	at sales office

CONTACT

Sales office	De Valk Monnickendam	Telephone	+31 299 65 63 50
Address	Hoogedijk 6 1145 PM Katwoude The Netherlands	E-mail	monnickendam@devalk.nl

DISCLAIMER

These particulars are given in good faith as supplied but cannot be guaranteed.



GENERAL

Model	X-YACHTS X-37
Type	sailing yacht
LOA (m)	11,35
LWL (m)	9,79
Beam (m)	3,48
Draft (m)	2,20
Year built	2009
Builder	X-Yachts A/S
Country	Denmark
Designer	Niels Jeppesen
Displacement (t)	6,4
CE norm	A
Hull material	GRP
Hull colour	white
Hull shape	round-bilged
Keel type	fin keel with bulb
Superstructure material	GRP
Deck material	GRP
Deck finish	non-skid moulded in
Superstructure deck finish	non-skid moulded in
Cockpit deck finish	teak
Antifouling (year)	2019
Window frame	aluminium
Window material	polycarbonate
Deckhatch	4x Moonlight
Fuel tank (litre)	stainless steel 90
Level indicator (fuel tank)	VDO
Freshwater tank (litre)	180
Level indicator (freshwater)	VDO
Blackwater tank (litre)	polyethylene



Blackwater tank extraction	deck extraction + uw line
Wheel steering	cable steering Jefa System
Emergency tiller	yes

ACCOMMODATION

Cabins	2
Berths	6
Interior	mahogany
Floor	wood
Open cockpit	yes
Saloon	yes
Headroom saloon (m)	1.85 - 1.87
Chart table	yes
Aft Cabin	yes
Galley	yes
Countertop	plastic
Sink	stainless steel 2x
Cooker	calor gas 2 burner Eno
Oven	yes
Gas alarm	Matrix
Fridge	Isothemp
Hot water system	220V + engine Isothemp 19 ltr.
Water pressure system	electrical
Owners cabin	v-bed Front
Wardrobe	hanging and shelves
Bathroom	shared
Toilet	shared
Toilet system	manual Jabsco
Wash basin	in the bathroom
Shower	shared
Guest cabin 1	double bed SB after cabin



Wardrobe hanging and shelves

MACHINERY

No of engines	1
Make	Yanmar
Type	3YM30FC
HP	29,00
kW	21,32
Fuel	diesel
Year installed	2009
Maximum speed (kn)	9
Cruising speed (kn)	6
Consumption (l/hr)	Approx 2 l/hr
Range (nm)	250
Engine cooling system	freshwater heat exchanger
Saildrive seal	replaced in 2015
Engine controls	bowden cable
Exhaust	watercooled
Propeller type	folding
Propeller blades	3
Manual bilge pump	yes
Electric bilge pump	yes
Electrical installation	with charger and 230 V outlet socket 230 Volt
Batteries	yes
Start battery	1
Service battery	2
Battery charger	Sterling 12v/30 Amp
Shorepower	with cable
Extra info	all fuses are automatic circuit breaker type,
Extra info	analogue VDO gauges for fuel, water and voltage
Extra info	all cables are terminated in a "dry"GRP box at chart table



NAVIGATION

Compass	Suunto
Depth sounder	and depth display mounted Raymarine ST60+
Log	Raymarine ST60+
Windset	forward looking wind transducer incl. transponder box mounted Raymarine ST60+
Repeater	see extra info 3x Raymarine ST70
VHF	full function handset Ray 240 DSC-D
Autopilot	and pilot with S1 course computer and Jefa drive ST6002 Smart Pilot
Plotter/GPS	chart plotter whit Raystar 125 GPS (excl. chart) E80
Electronis chart(s)	charts of UK, Ireland, down to France and the Netherlands Navionics
Radio receiver	with stubby VHF/AIS rail mount antenna 156 Mhz Raymarine AIS 650
Transmitter	Raymarine AIS 650
Navigation lights	tricolour and anchor light in mast top
Extra info	3x Raymarine ST70 and mast mounted instruments, with control unit fitted above hatch
Extra info	Ray 240 cockpit loudspeaker incl. on/off switch

EQUIPMENT

Sprayhood	blue canvas with stainless steel framework mounted in GRP recess on cabin roof
Sprayhood with grab rail	yes
Bathing platform	Teak
Boarding ladder	yes
Deck shower	cold
Anchor	yes
Anchor chain	15m
Sea railing	wire
Grab rail (superstructure)	stainless steel



Pushpit	S/s
Pulpit	S/s
Lifebuoy	yes
Danbuoy	yes
Radar reflector	yes
Fenders	yes
Mooring lines	yes
Radio-cd player	JVC
Cockpit speakers	waterproof connected to the JVC radio Bose 131
Speakers in salon	yes
Speakers in cabin	yes
Fire extinguisher	3
Latest extinguisher survey	2018
Extra info	receiver and radio with 2 loudspeakers mounted in the saloon JVC DVD Multimedia
Extra info	2x gas cylinder, warps and owners manual

RIGGING

Rigging	fractional Discontinuous rod rigging
Standing rigging	Rod Replaced in 2015
Brand mast	John mast
Material mast	aluminium
Spreaders	double spreader mast designed by X-Yachts for stiffness, safety and ease of use
Mainsail	2016 1x Elvestrom EPEX 2016, lazy jacks 2: 1x North Sails 3DL 2012
Jib	Furling jib Elvestrom EPEX sails 2016
Jib I	North Sails 3 DL 2012
Jib II	North Sails 3DL 2012
Spinnaker	North Sails A5, 2011, North Sails S1 and S3: 2013
Trysail	recut for Axiom, unused McWilliam 2007
Stormjib	2013, unused North Sails



Reefing System	Single line
Backstay adjuster	hydraulic Navtec
Boomvang	gasspring
Primary sheet winch	2x Andersen 40ST 2 speed
Genoa sheetwinches	2x Andersen 46ST 2 speed
Halyard winches	Halyard and control line tailes stowed in cockpit rope bags 2x Andersen 40ST 2 speed
Spi-pole	carbon
Extra info	Andersen full stainless steel winches
Extra info	Fredericksen deck gear, running rigging in Spectra



X-YACHTS X-37



X-YACHTS X-37



X-YACHTS X-37



X-YACHTS X-37



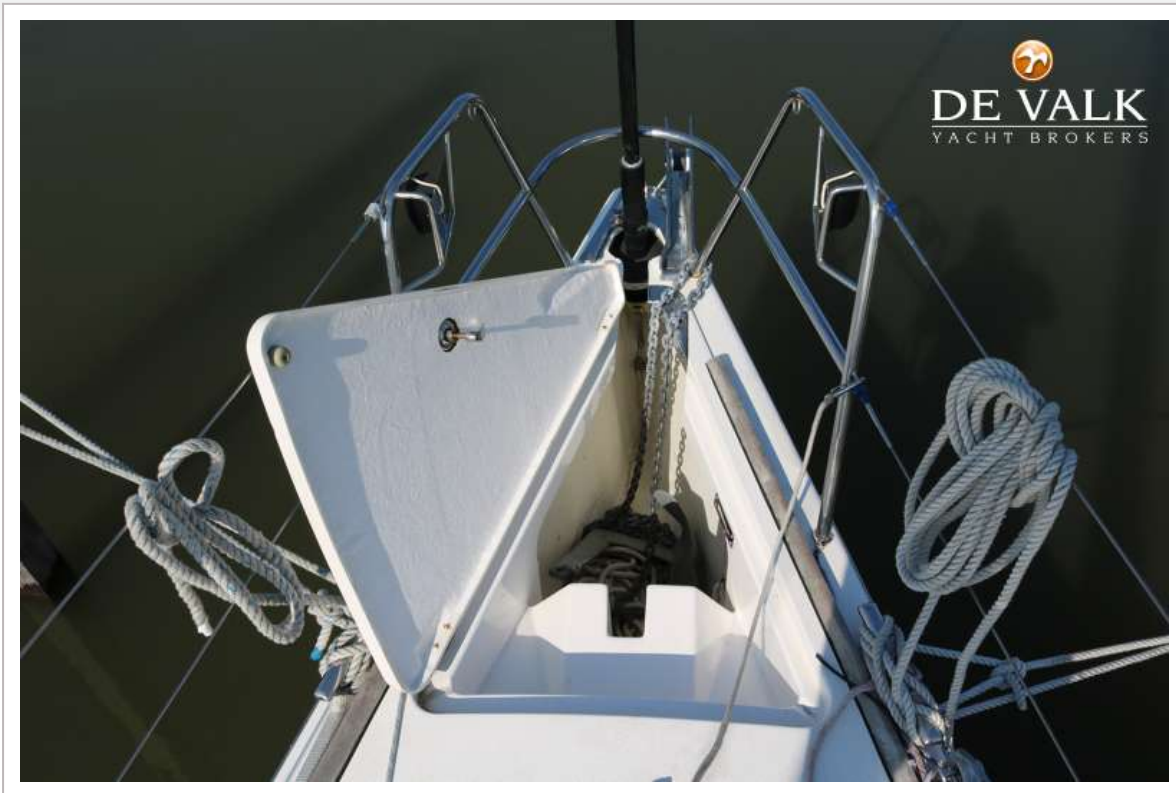
X-YACHTS X-37



X-YACHTS X-37



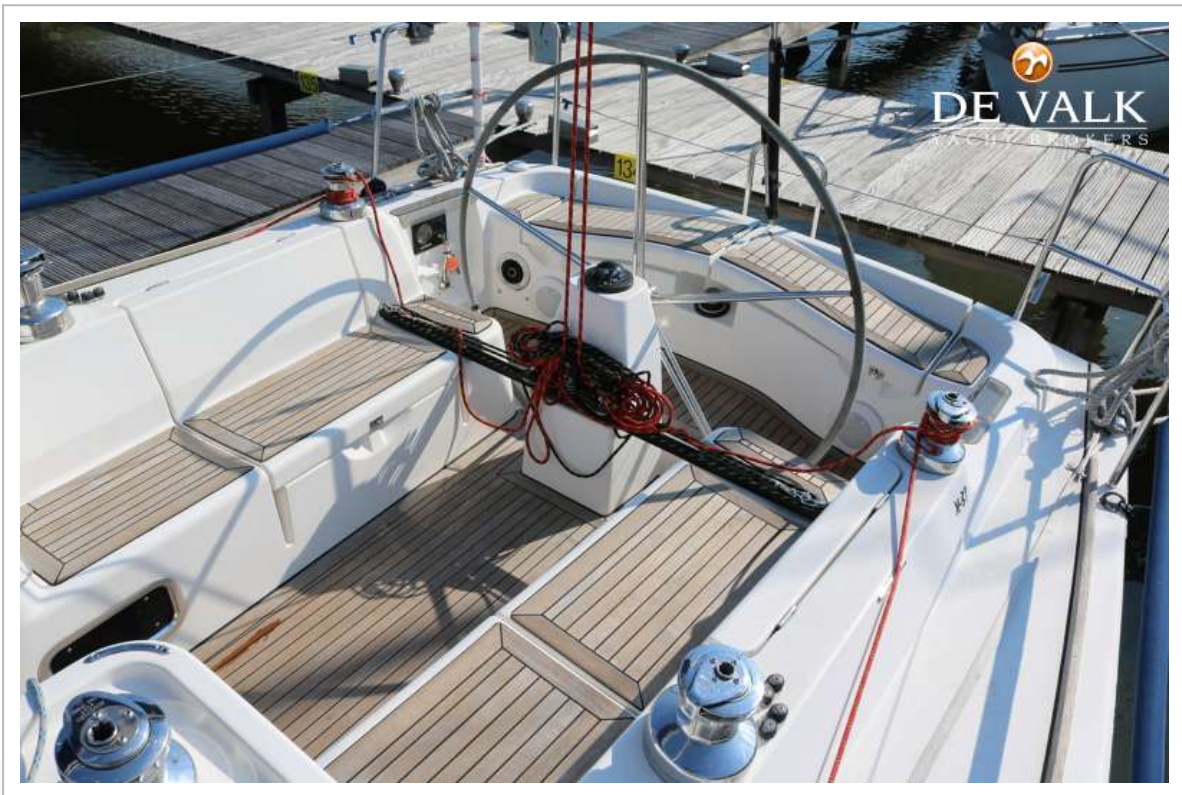
X-YACHTS X-37



X-YACHTS X-37



X-YACHTS X-37



X-YACHTS X-37



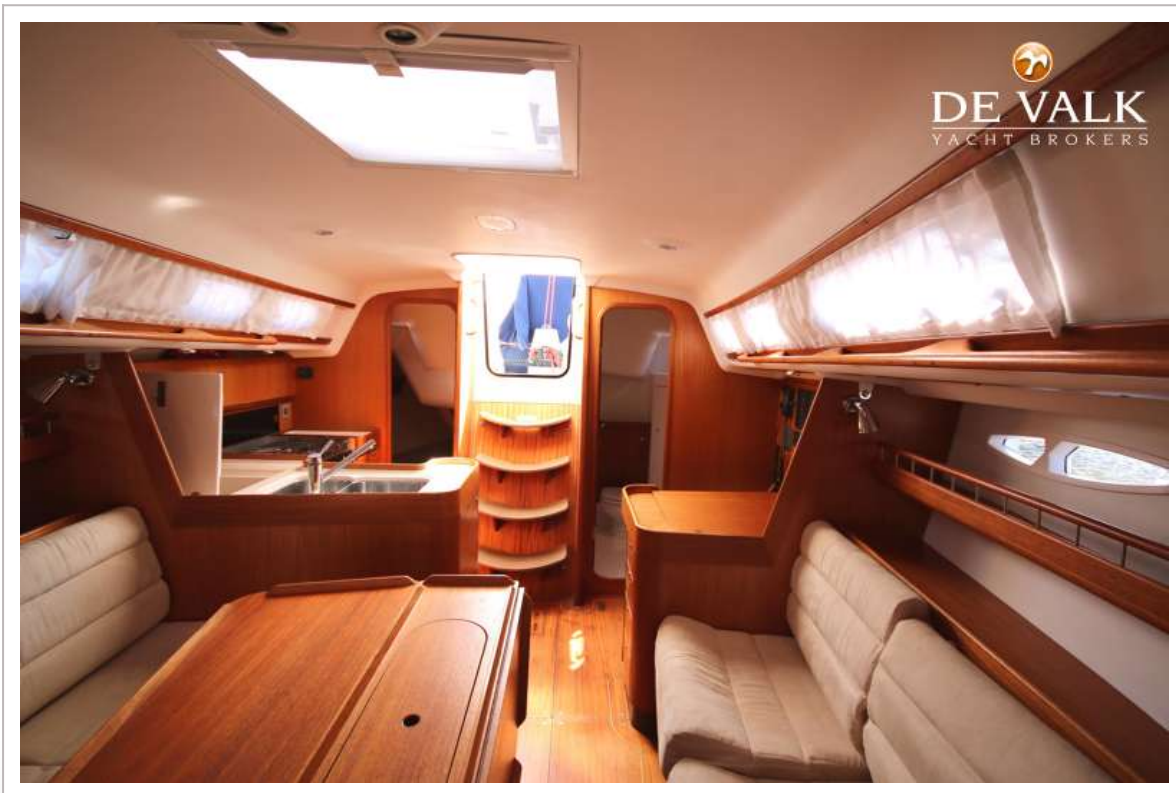
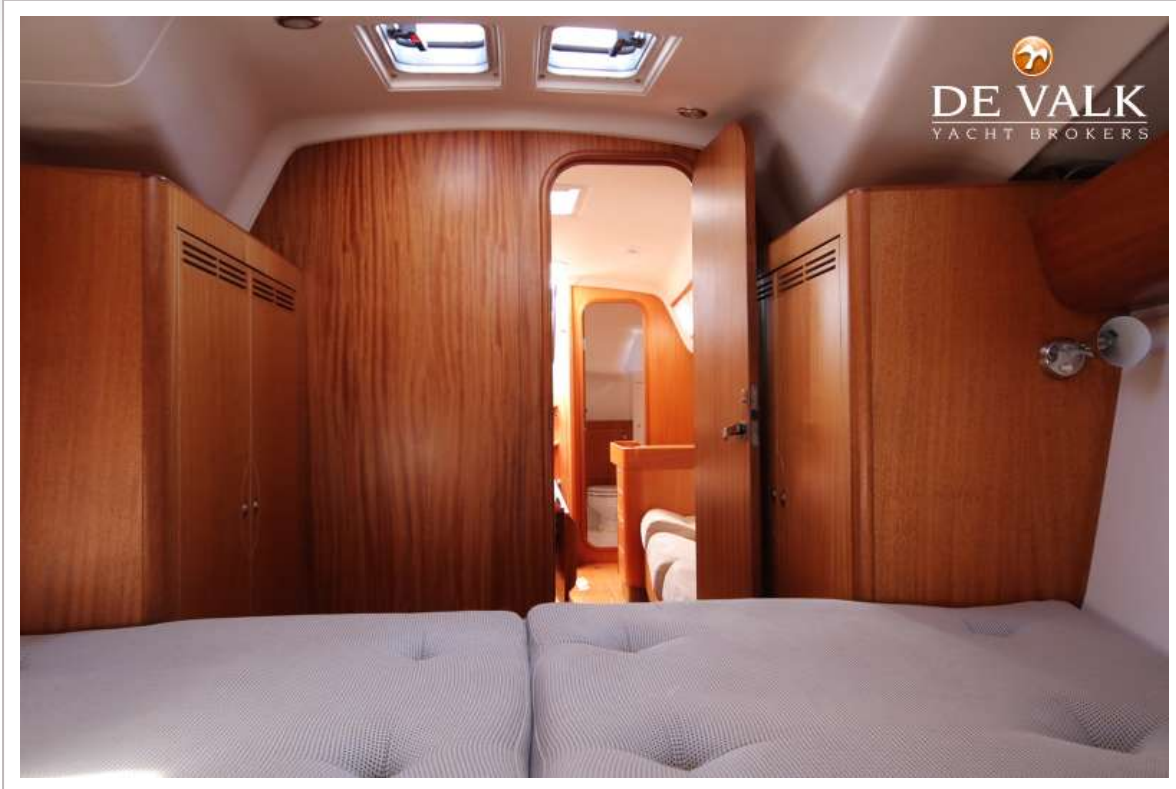
X-YACHTS X-37



X-YACHTS X-37



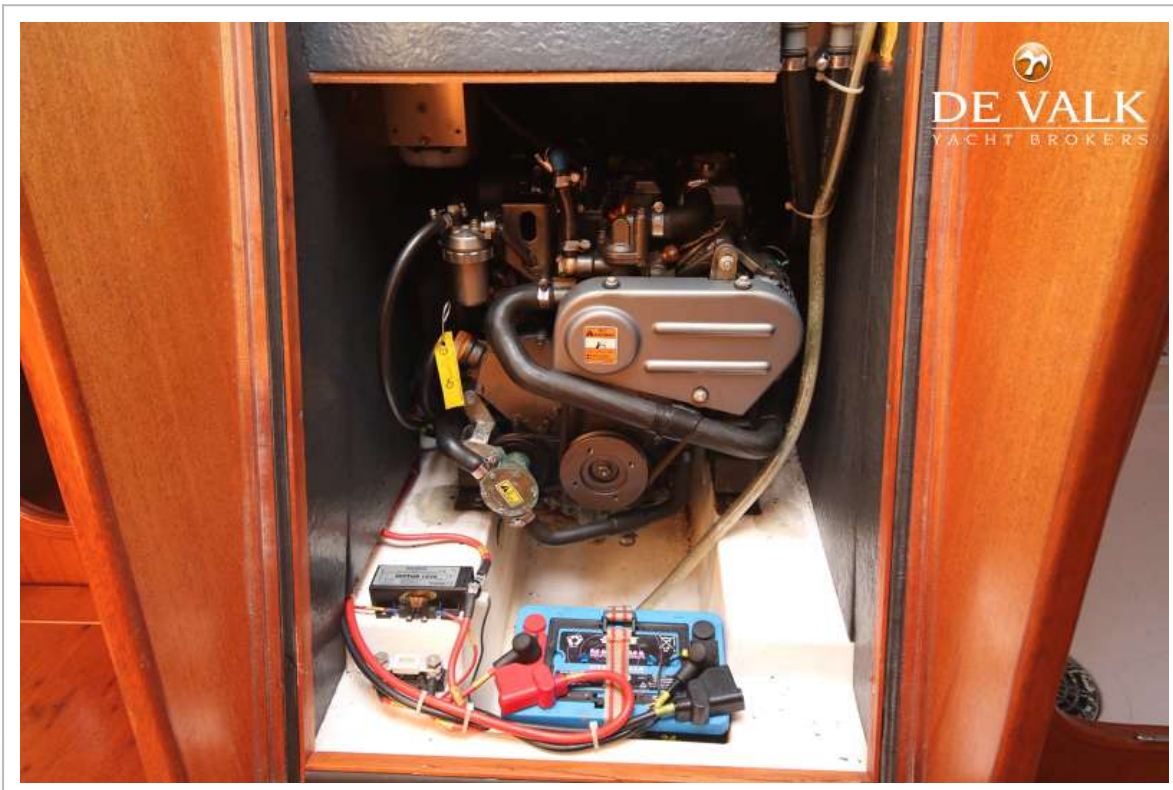
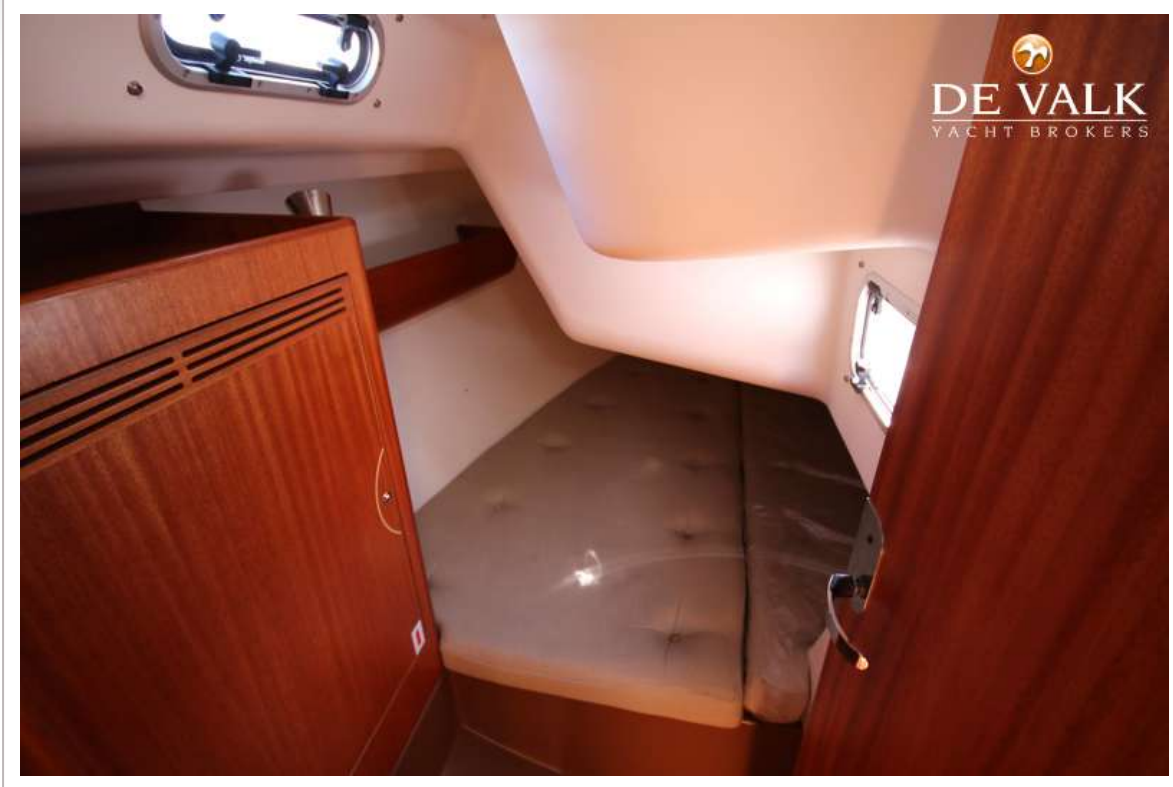
X-YACHTS X-37



X-YACHTS X-37



X-YACHTS X-37

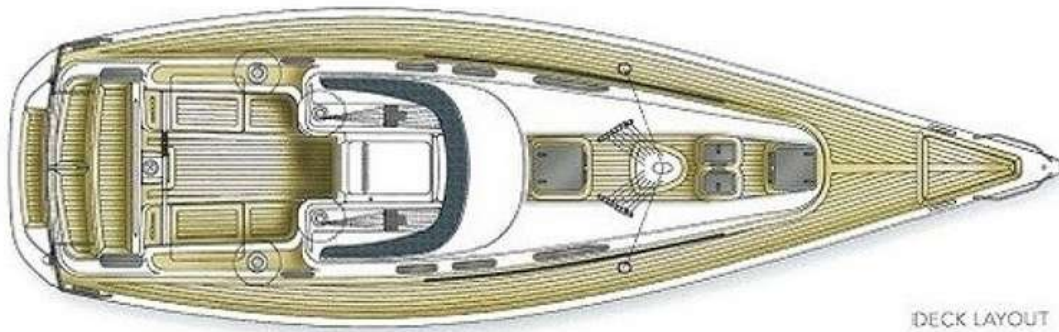


X-YACHTS X-37



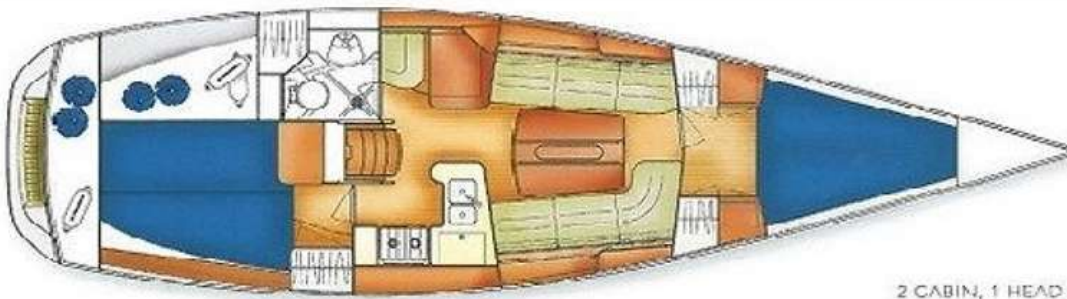
X-YACHTS X-37


DE VALK
YACHT BROKERS



DECK LAYOUT


DE VALK
YACHT BROKERS



2 CABIN, 1 HEAD

