



DE VALK
YACHT BROKERS



GALLIAN 184



DE VALK
YACHT BROKERS

GALLIAN 184

BROKER'S COMMENTS

The Gallian 184 "Balu" is an exceptional well balanced long distance sailing yacht and she has a 3 cabin layout with decksalon and a 2nd interior steering position and ample storage space and even room for a crew. Her twin engine configuration makes her not only even to manoeuvre but also safe in case of engine trouble. Her spacious decksaloon also features a 10 person seating area and a very spacious galley with double cooking position (gas & electric). This Gallian 184 is ready to go and equipped for a comfortable world cruise.

Reinier van der Wolf

SPECIFICATIONS

Dimensions	18.40 x 5.00 x 2.70 (m)	Builder	Etudes de carenes
Built	1985	Cabins	3
Material	GRP	Berths	7
Engine(s)	2 x Perkins 6354 diesel	Hp/Kw	2 x 120.00 (hp), 88.20 (kw)
Asking price	sold (VAT)	Lying	elsewhere / Not at sales office

CONTACT

Sales office	De Valk Monnickendam	Telephone	+31 299 65 63 50
Address	Hoogedijk 6 1145 PM Katwoude The Netherlands	E-mail	monnickendam@devalk.nl

DISCLAIMER

These particulars are given in good faith as supplied but cannot be guaranteed.



GENERAL

Model	GALLIAN 184
Type	sailing yacht
LOA (m)	18,40
Beam (m)	5,00
Draft (m)	2,70
Headroom (m)	2,01
Year built	1985
Launched	1985
Builder	Etudes de carenes
Country	France
Designer	Etudes des carenes
Displacement (t)	39,5
CE norm	NA
Hull material	GRP
Hull colour	white
Hull shape	round-bilged
Keel type	fin keel
Superstructure material	wood
Rubbing strake	wood
Deck material	wood
Deck finish	teak
Superstructure deck finish	teak
Cockpit deck finish	teak
Antifouling (year)	2018
Dorades	2 x
Window frame	aluminium
Deckhatch	yes
Portholes	aluminium
Radar arch	non collapsible With solar panels
Fuel tank (litre)	2 x 450 L.



Level indicator (fuel tank)	yes
Freshwater tank (litre)	1000
Level indicator (freshwater)	yes
Blackwater tank (litre)	stainless steel 100
Level indicator (blackwater)	yes
Blackwater tank extraction	pump
Wheel steering	cable steering
Inside helm position	yes
Outside helm position	cable steering
Emergency tiller	yes

ACCOMMODATION

Cabins	3
Berths	7
Crew cabin	Optional now in use as sail storag
Interior	mahogany
Layout	Owner
Floor	parquet
Open cockpit	yes
Aft deck	yes
Pilot house/deck saloon	yes
Navigation center	yes
Chart table	yes
Aft Cabin	yes
Sliding door to cockpit	yes
Galley	U shaped
Countertop	wood
Sink	stainless steel Double
Cooker	calor gas 3 burner gas & 2 burner electric
Oven	Gas
Extractor	yes



Gas alarm	yes
Microwave	yes
Fridge	3 x total 360 liter
Freezer	1 x total 100 liter
Hot water system	220V + engine 60 Liter Raritan
Water pressure system	
Dishwasher	Miele
Kettle	yes
Ice maker	yes
Coffee maker	yes
Crockery	yes
Owners cabin	French bed
Bed length (m)	2,05 x 1,80
Wardrobe	hanging/drawers/shelves
Bathroom	en suite
Toilet	en suite
Toilet system	electric
Wash basin	in the bathroom
Shower	en suite
Guest cabin 1	double bed
Bed length (m)	2,00 x 1,40
Wardrobe	hanging and shelves
Bathroom	en suite
Toilet	en suite
Toilet system	electric
Wash basin	in the bathroom
Shower	en suite
Guest cabin 2	double bed
Bed length (m)	2,00 x 1,60
Wardrobe	hanging and shelves
Bathroom	en suite
Toilet	en suite



Toilet system	electric
Wash basin	in the bathroom
Shower	en suite
Crew cabin(s)	Optional now in use as sail locker
Washing machine	Miele

MACHINERY

No of engines	2
Make	Perkins
Type	6354
HP	120,00
kW	88,20
Fuel	diesel
Year installed	1985
Year of overhaul	2008
Maximum speed (kn)	9 @ 2800 rpm
Cruising speed (kn)	7
Consumption (l/hr)	10
Engine hours	2170
Engine cooling system	freshwater heat exchanger
Drive	shaft
Shaft seal	yes
Engine controls	bowden cable Two positions
Gearbox	mechanical Hurth TR 450- 2R 2.05/1
Propeller type	fixed Jprop
Propeller blades	630 mm
Propeller shaft material	stainless steel 40 mm.
Shaft lubrication	water
Manual bilge pump	2 x
Electric bilge pump	2 x 24 V, 2 x 240 V & 1 x mechanic engine driven
Bilge alarm	yes



Electrical installation	12 & 24 V DC & 240 V AC
Generator	Onan 12 Kva 3 cylinder yanmar, 1985
Running hours generator	Approx 1200 h.
Batteries	yes
Start battery	2 x 12 V 100A AGM for 24 Volt
Service battery	24 Volt from 12 x 2 V.cells 600 A.
Generator battery	1 x 12 V 100 A. AGM
Battery monitor	yes
Battery charger	2 x Mastervolt 24 V 100A. & 1 x 12 V 25 A., 1 x 24 V 25 A..
Inverter	1 x 2000 W & 1 x 800 W.
Wind generator	yes
Solar panel	4 x total 720 Watt
Diode battery combiners	yes
Shorepower	with cable
Watermaker	100l /h
Extra info	2 x 24 V 40 A & 1 x 24 V 160 A alternators

NAVIGATION

Compass	C-Plath
Electric compass	yes
Depth sounder	Furuno & Simrad
Log	Simrad
Windset	Simrad
Repeater	Simrad
VHF	yes
Autopilot	yes
Radar	Furuno FC 582 & Samyung SMR3600
GPS	Furuno GP70
Plotter	Radio Ocean sea map 300
PC connection	yes
Electronis chart(s)	3



Navigation lights	yes
Loudhailer	yes

EQUIPMENT

Sprayhood	yes
Sprayhood with grab rail	yes
Bimini	yes
Cockpit cushions	yes
Cockpit table	yes
Bathing platform	yes
Boarding ladder	steel
Gangway	yes
Deck shower	yes
Anchor	Delta
Anchor chain	70 M 12 mm
Windlass	electrical Lofrans 2000W
Windlass aft	electrical 2 x
Dinghy	The Dinghy visible on the pictures is no longer with the boat
Outboard	The outboard visible on the pictures is no longer with the boat
Sea railing	
Grab rail (superstructure)	
Railing side opening gates	yes
Pushpit	yes
Pulpit	yes
Life raft	container
Life raft (pers)	8
Lifejackets	6
Danbuoy	yes
Fenders	yes
Mooring lines	yes
Spare parts	yes



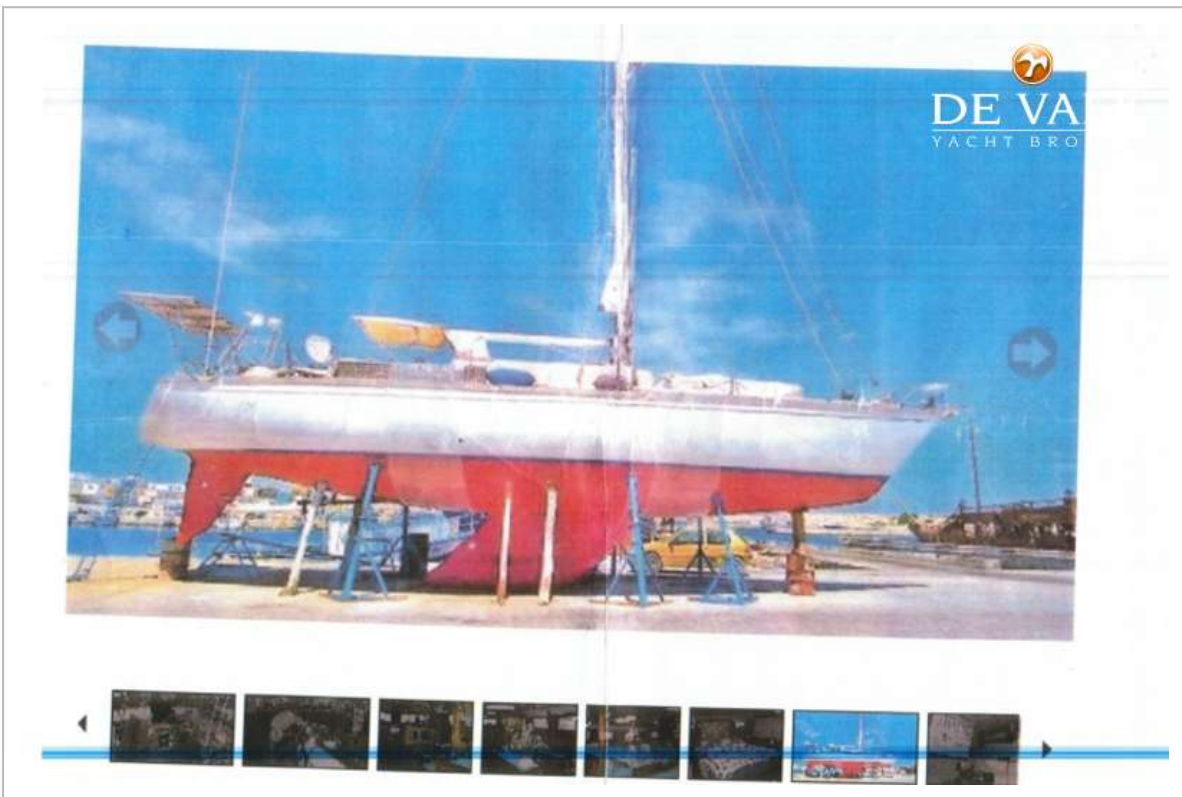
Tools	yes
TV	yes
Radio-cd player	yes
DVD player	yes
Cockpit speakers	yes
Speakers in salon	yes
Clock - barometer	yes
Fire extinguisher	yes

RIGGING

Rigging	cutter
Standing rigging	wire
Material mast	aluminium
Spreaders	2 sets
Keel stepped mast	yes
Mainsail	Inmast furling 58m2 Elvstrom radial 2012
Stoway mast	yes
Genoa	Furling 110m2 Elvstrom 2010 tri radial
Genoa furler	yes
A-symmetric spi	yes
Staysail	Furling 38m2 Elvstrom tri radial 2010
Staysail furler	yes
Backstay adjuster	hydraulic
Boomvang	gasspring
Primary sheet winch	2 x Lewmar 48, 2 SP. ST.
Secondary sheet winch	3 x Lewmar 46 2 SP. ST.
Genoa sheetwinches	2 x Bariant 736 2SP. ST.
Halyard winches	2 x Lewmar 40 2 SP. ST 2 x Lewmar 30 ST.
Isolated backstay	yes
Extra info	A total of 200m2



GALLIAN 184



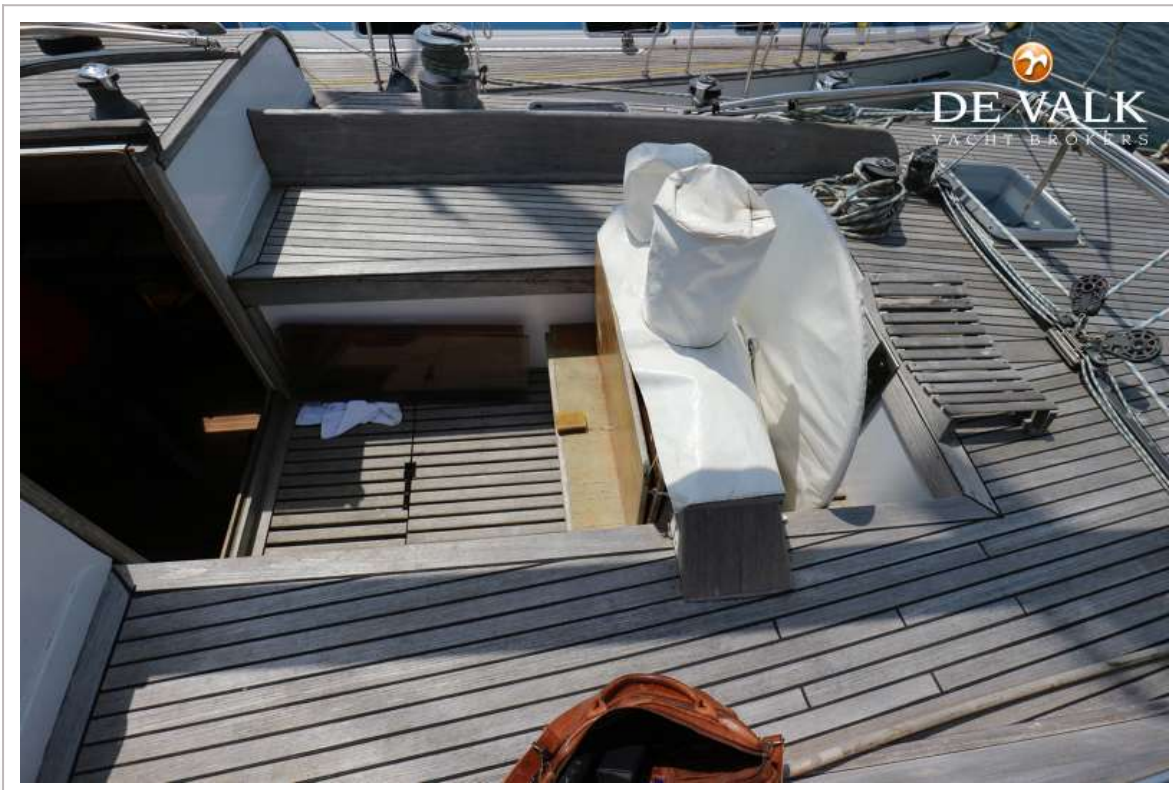
GALLIAN 184



GALLIAN 184



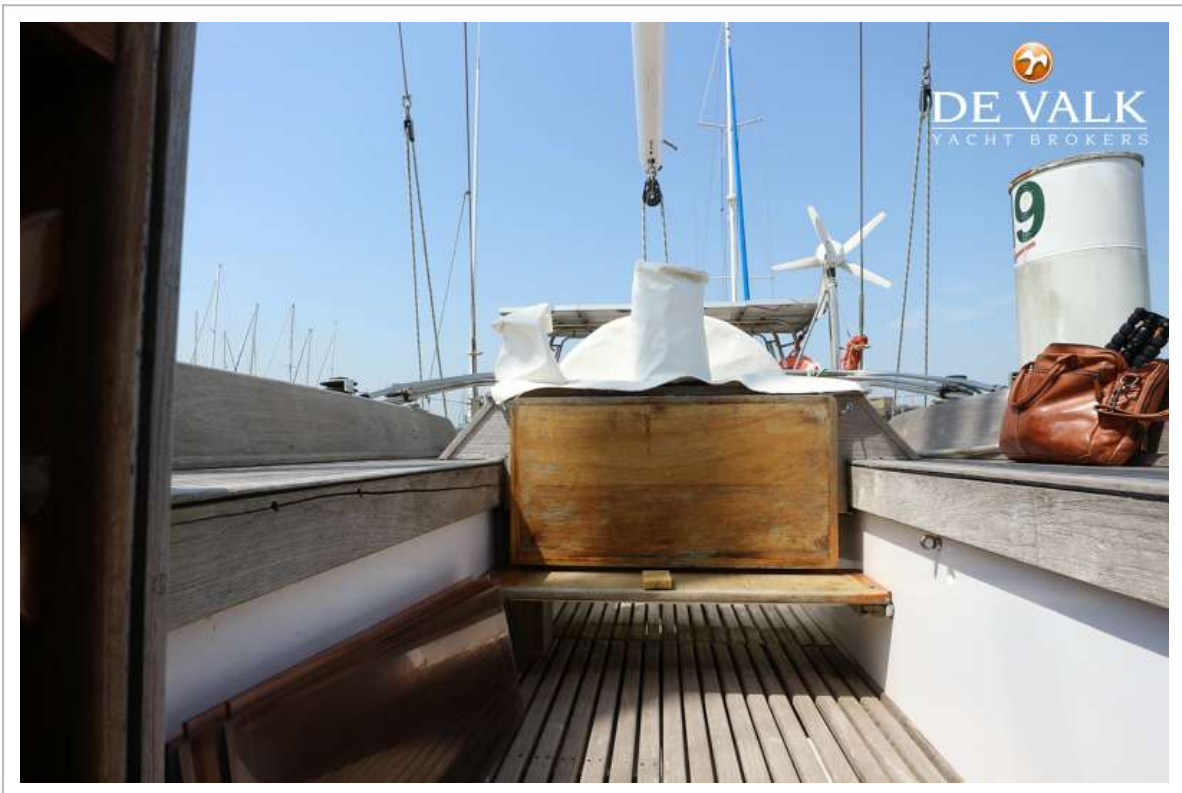
GALLIAN 184



GALLIAN 184



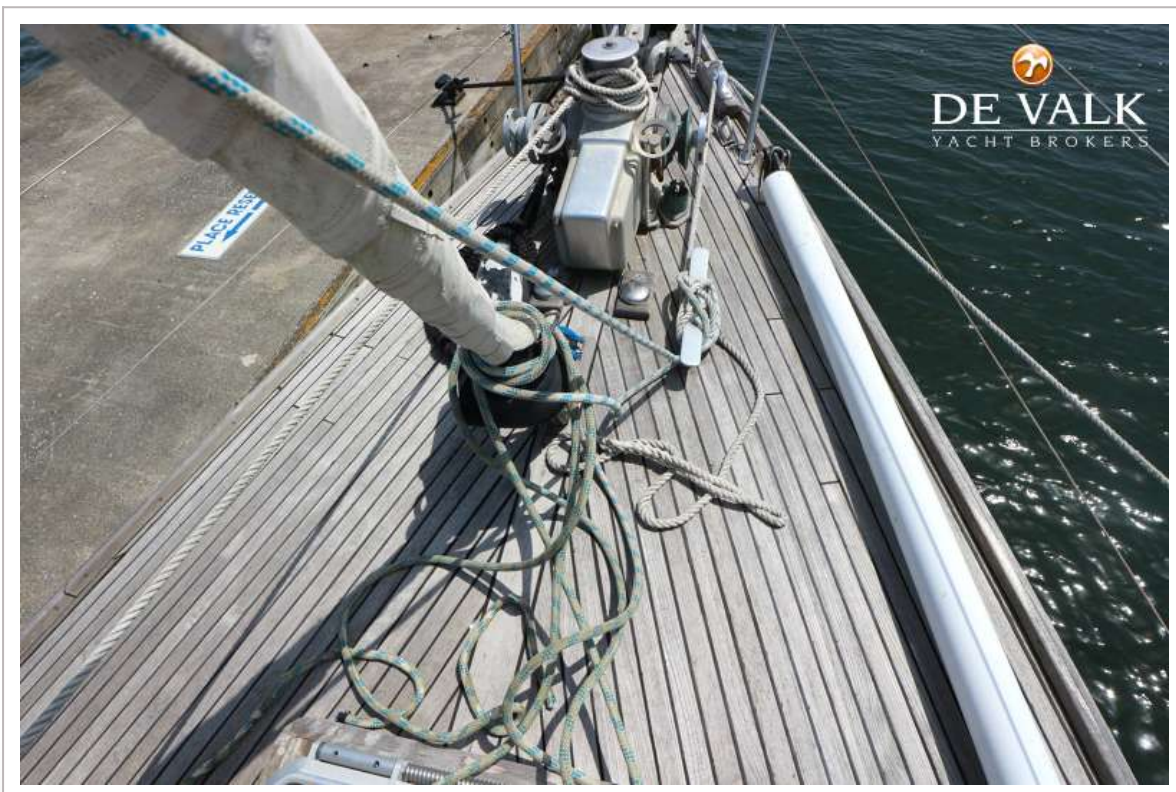
GALLIAN 184



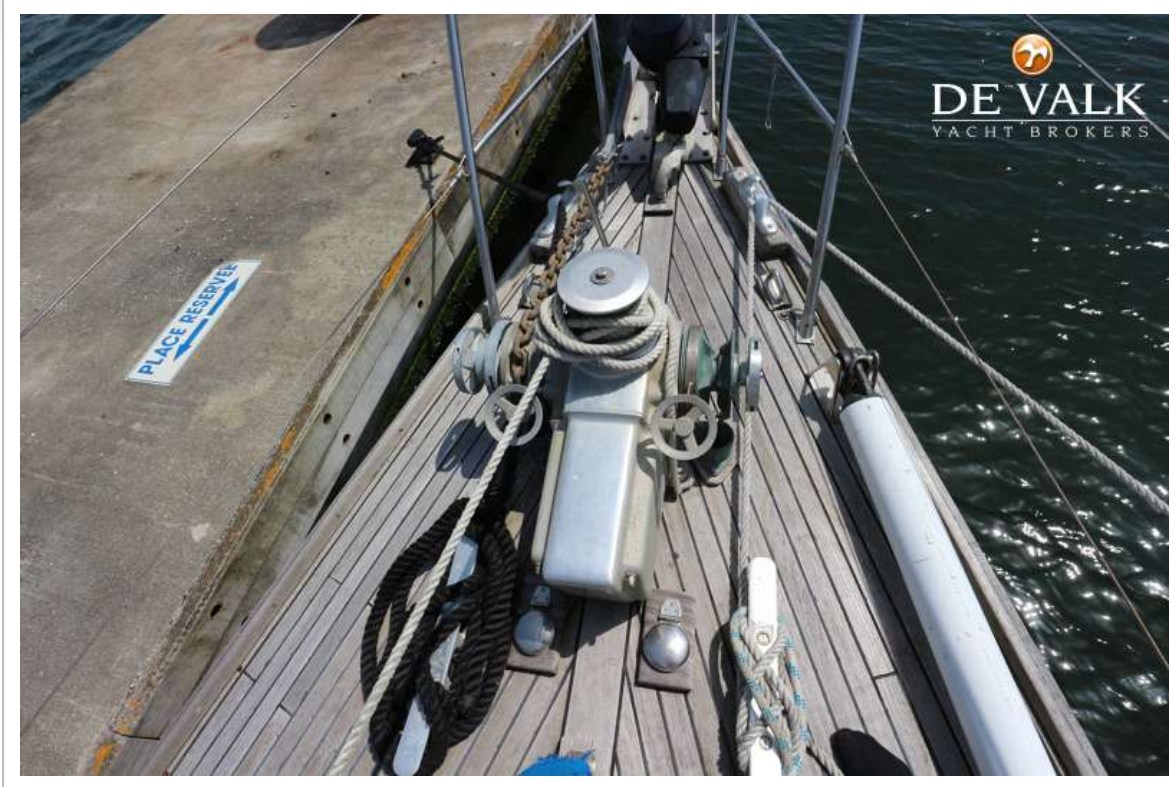
GALLIAN 184



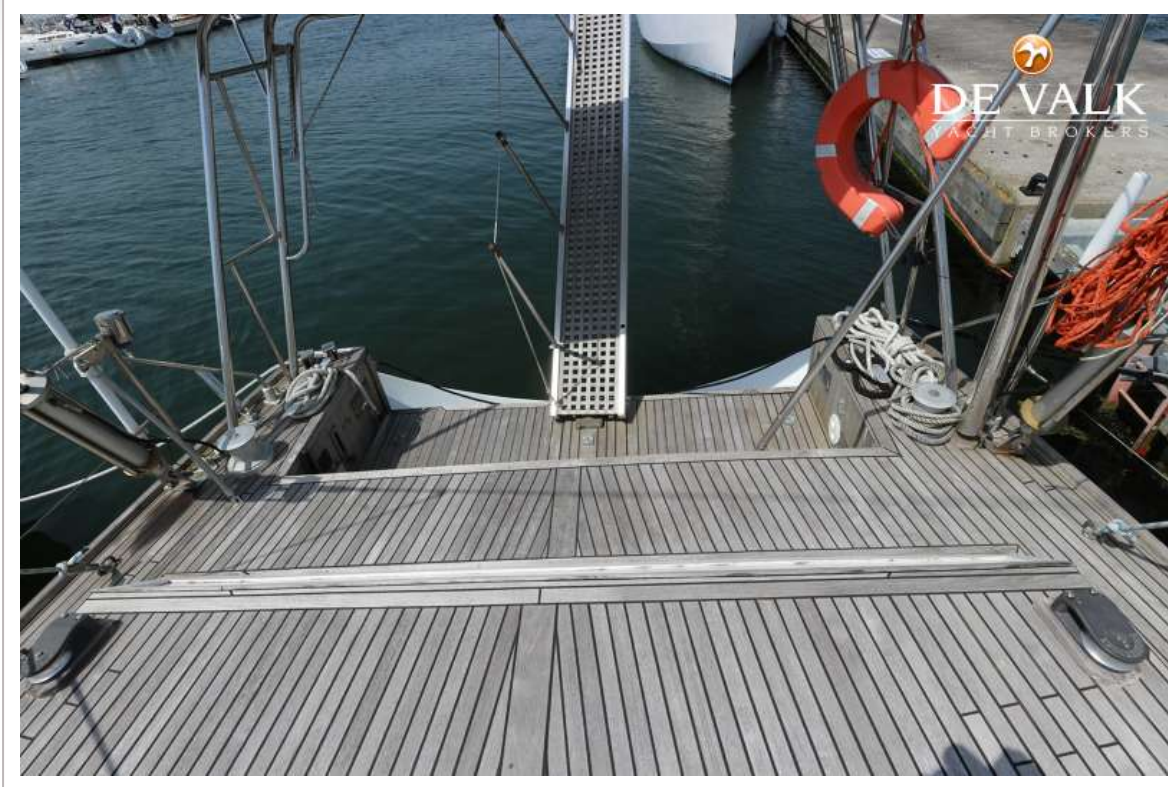
GALLIAN 184



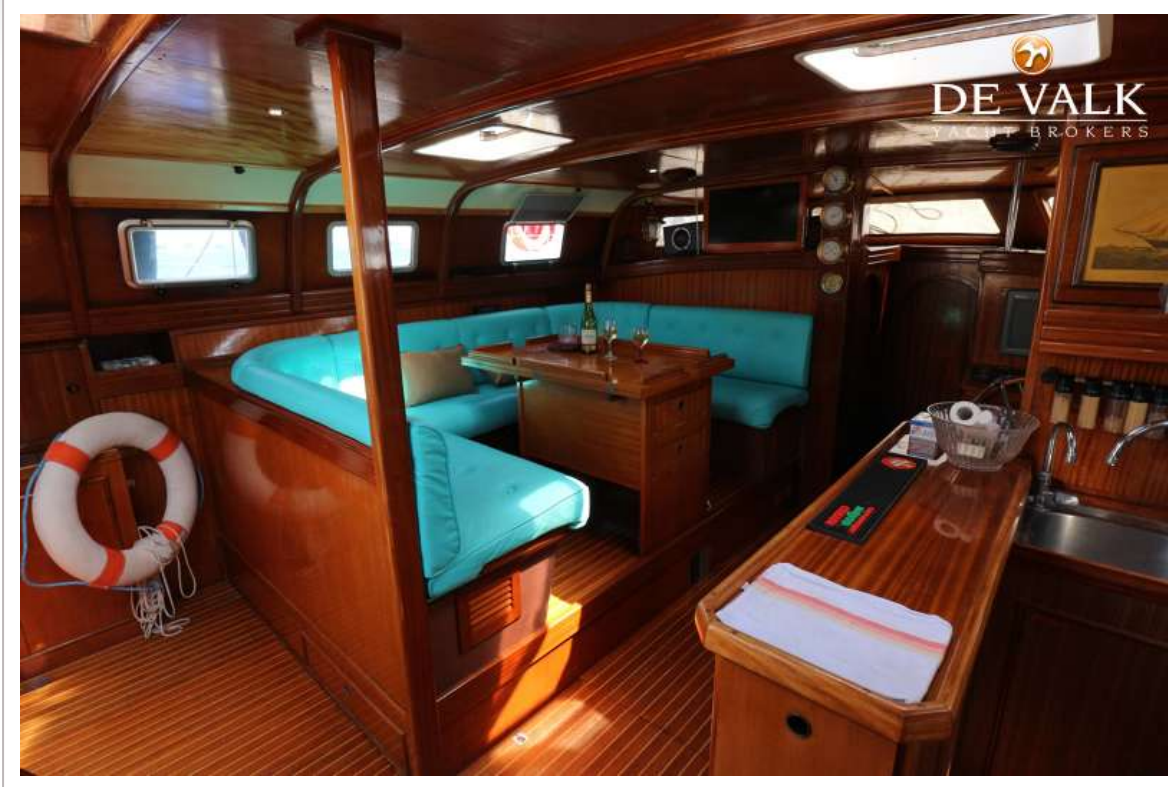
GALLIAN 184



GALLIAN 184



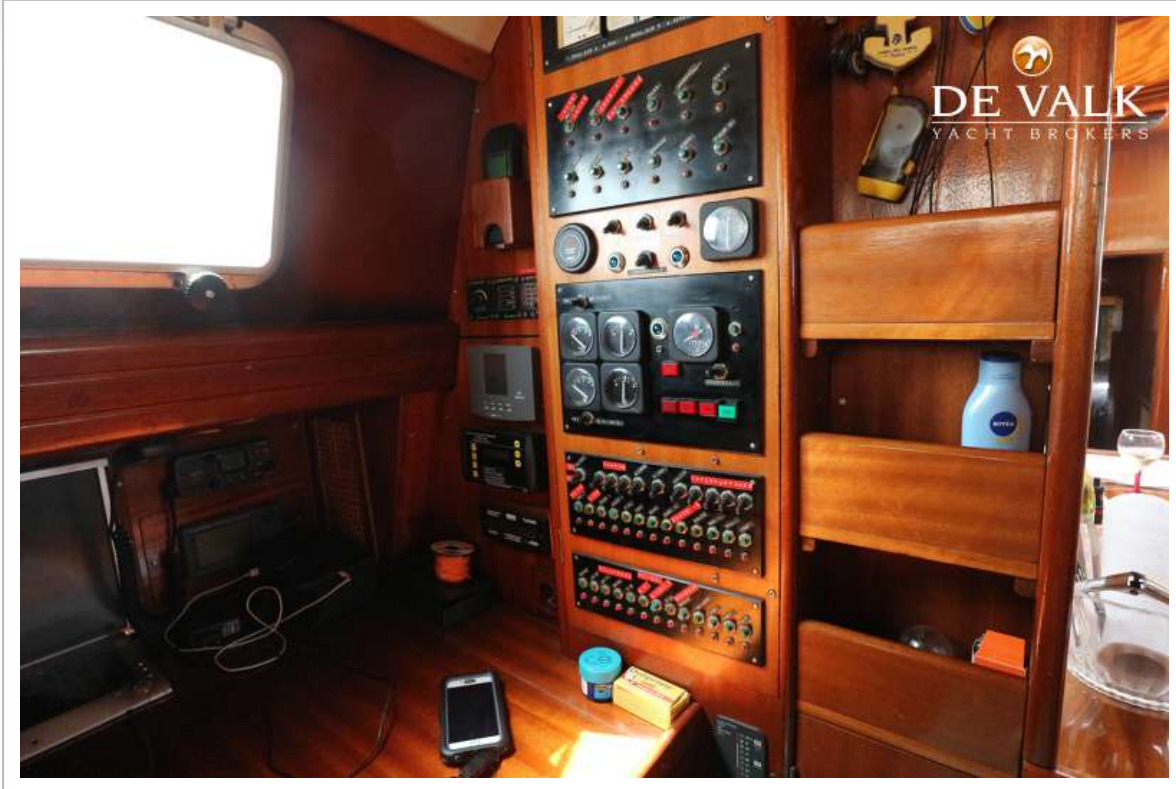
GALLIAN 184



GALLIAN 184



GALLIAN 184



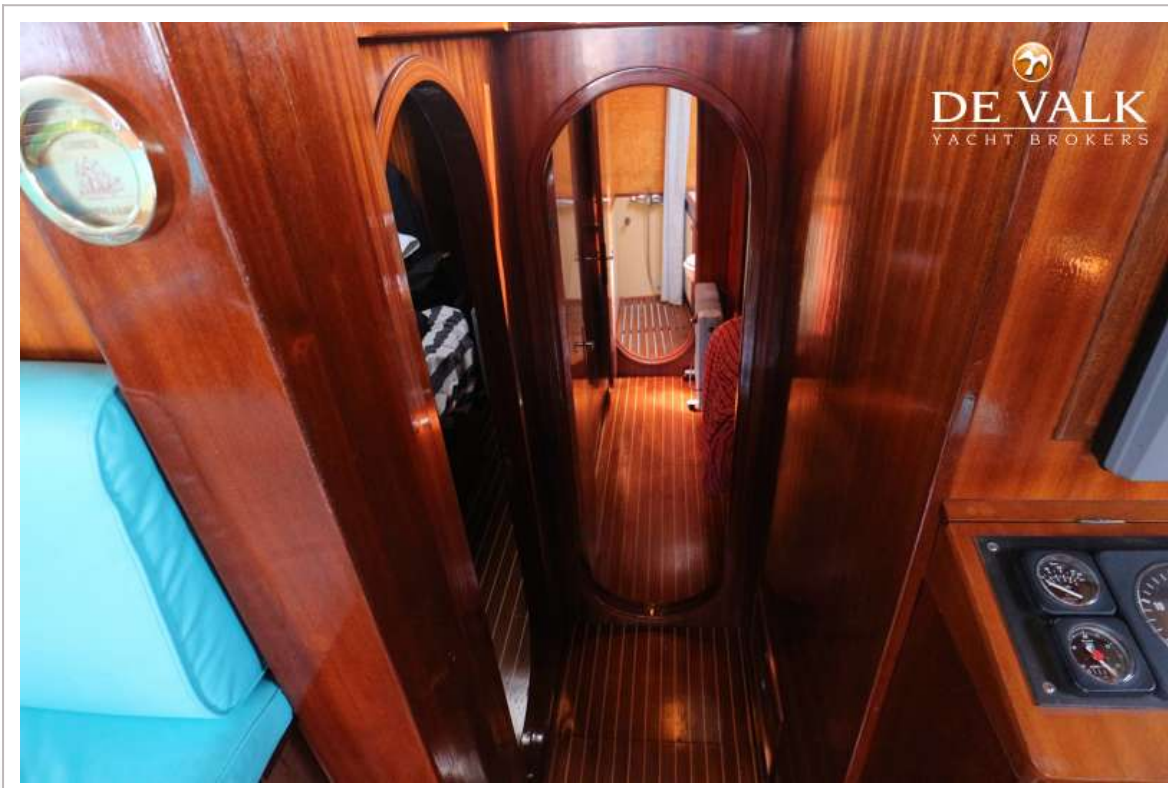
GALLIAN 184



GALLIAN 184



GALLIAN 184

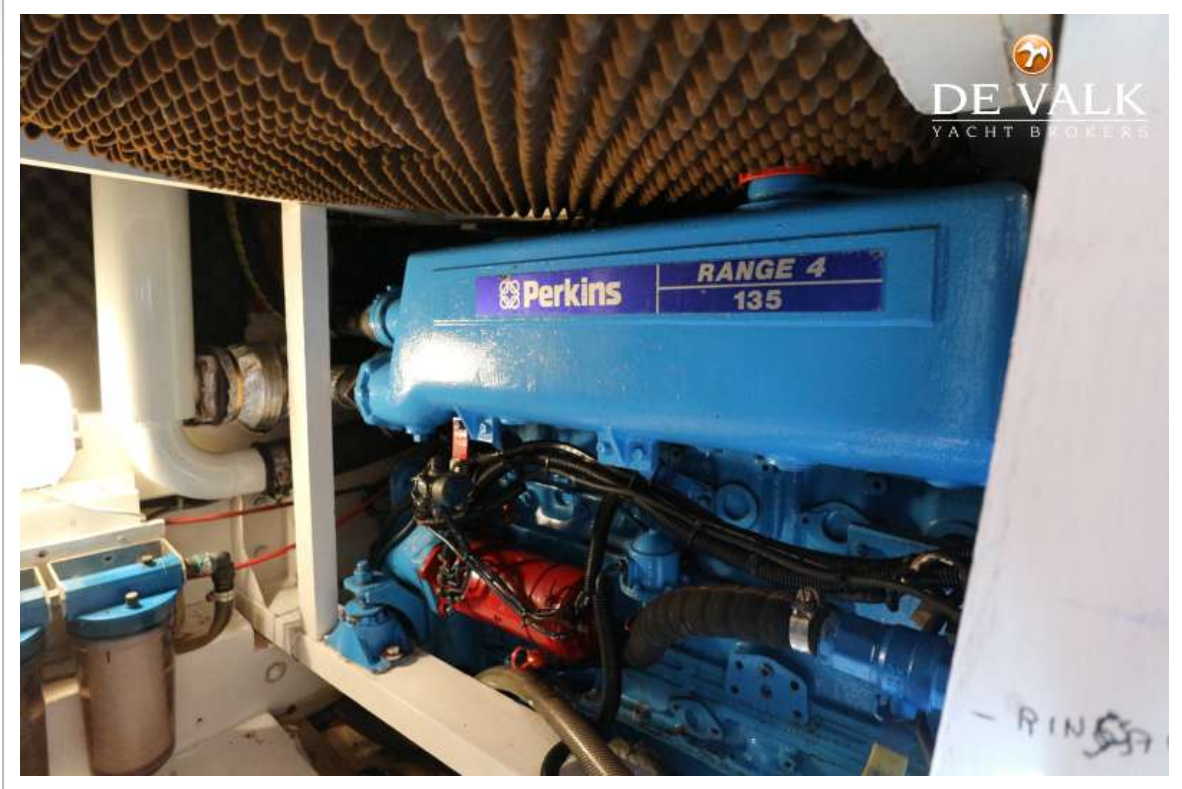


GALLIAN 184





GALLIAN 184



GALLIAN 184

