



DE VALK
YACHT BROKERS



HORIZON FD85



DE VALK
YACHT BROKERS

BROKER'S COMMENTS

Spectacular price drop! Almost new stunning Horizon FD85 motor yacht, only used as demo, is ready to sail. This pocket sized Super Yacht with a Hi-Tec modern Cor de Rover design is known for her exceptional sea behaviour and is very comfortable on anchor due to her Zero Speed stabilizers. Just below 24 mtr. in registration, so perfectly well for charter or private use. Fully spec'd with superb building quality and technical and cosmetic finish to a very high standard. Was 6,5 million! Walk around the yacht via:

<https://my.matterport.com/show/?m=BaBFQf8PvUg>

Willem Koopmans

SPECIFICATIONS

Dimensions	26.07 x 7.07 x 1.79 (m)	Builder	Horizon Group
Built	2017	Cabins	7
Material	GRP	Berths	
Engine(s)	2 x MAN D2868LE436 diesel	Hp/Kw	2 x 1,200.00 (hp), 882.00 (kw)
Asking price	€ 5.500.000 (VAT Not paid)	Lying	contact sales office

CONTACT

Sales office	De Valk Costa Blanca	Telephone	+34965021569
Address	Costa Blanca Region 03730 Javea Alicante Spain	E-mail	costablanca@devalk.nl

DISCLAIMER

These particulars are given in good faith as supplied but cannot be guaranteed.



HORIZON FD85

GENERAL

Model	HORIZON FD85
Type	motor yacht
LOA (m)	26,07
LWL (m)	22,34
Beam (m)	7,07
Draft (m)	1,79
Headroom (m)	2,05
Year built	2017
Launched	Demo vessel, never used
Builder	Horizon Group
Country	Taiwan
Designer	Cor de Rover Design
Displacement (t)	89
Gross tonnage	138
Net tonnage	41
CE norm	A
Hull material	GRP
Hull colour	off-white
Hull shape	yes
Bilge keels	yes
Superstructure material	GRP
Deck material	GRP
Deck finish	teak
Antifouling (year)	2022
Flybridge	yes
Flybridge cover	yes
Flybridge cockpit cover	yes
Flybridge suncover	Partly fixed cover, partly removable
Radar arch	yes
Fuel tank (litre)	6500



HORIZON FD85

Fuel tank 2 (litre)	6500
Level indicator (fuel tank)	yes
Freshwater tank (litre)	1500
Level indicator (freshwater)	yes
Blackwater tank (litre)	750, sewage treatment system
Blackwater tank extraction	yes
Wheel steering	yes
Inside helm position	yes
Flybridge helm position	yes
Emergency tiller	yes
Extra info	Fuel polishing system present

ACCOMMODATION

Cabins	7
Crew cabin	2
Crew berths	4
Layout	4 guest, 1 owner cabin, 2x crew cabin in separate aft section
Floor	yes
Open cockpit	yes
Aft deck	yes
Headroom saloon (m)	2,05
Heating 2	Underfloor heating at marble sections bathroom
Air-conditioning	yes
Navigation center	yes
Aft Cabin	yes
Dining room	yes
Dinette	yes
Sliding door to aft deck	yes
Galley	yes
Countertop	yes
Sink	stainless steel Double



Cooker	induction Siemens, 5 burner
Oven	Siemens
Extractor	yes
Gas alarm	yes
Microwave	yes
Fridge	yes
Freezer	yes
Wine cooler	yes
Hot water system	yes
Water pressure system	yes
Dishwasher	yes
Ice maker	yes
Owners cabin	double bed
Bed length (m)	2,10
Wardrobe	hanging/drawers/shelves Walk-in-closet
Bathroom	en suite
Toilet	en suite
Toilet system	electric
Wash basin	in the bathroom Walk-in-shower
Shower	yes
Jacuzzi	On flybridge
Extra info	Underfloor heating
Guest cabin 1	double bed In front
Bed length (m)	2,05
Wardrobe	hanging/drawers/shelves
Bathroom	en suite
Toilet	en suite
Toilet system	electric
Wash basin	in the bathroom
Shower	en suite
Guest cabin 2	twin single SB
Bed length (m)	2,05



Wardrobe	hanging/drawers/shelves
Bathroom	en suite
Toilet	en suite
Toilet system	electric
Wash basin	in the bathroom
Shower	en suite
Guest cabin 3	double bed
Bed length (m)	2,05
Wardrobe	hanging/drawers/shelves
Bathroom	en suite
Toilet	en suite
Toilet system	electric
Wash basin	in the bathroom
Shower	en suite
Guest cabin 4	double bed
Bed length (m)	2,05
Wardrobe	hanging/drawers/shelves
Bathroom	en suite
Toilet	en suite
Toilet system	electric
Wash basin	in the bathroom
Shower	en suite
Crew cabin(s)	In aft section with own galley and entrance
Bathroom (crew)	yes
Toilet (crew)	yes
Toilet system	yes
Wash basin	yes
Shower (crew)	yes
Extra info	yes
Washing machine/dryer combi	2x Siemens
Ironing facilities	yes
Central vacuum cleaner	yes



Flybridge	yes
Wet bar	yes

MACHINERY

No of engines	2
Make	MAN
Type	D2868LE436
HP	1200
kW	882
Fuel	diesel
Maximum speed (kn)	16.5
Cruising speed (kn)	10
Range (nm)	1750
Engine hours	100
Engine cooling system	freshwater heat exchanger
Shaft seal	yes
Engine controls	electrical
Gearbox	yes
Bowthruster	hydraulic With remote control
Sternthruster	hydraulic With remote control
Exhaust	watercooled
Propeller type	fixed Bronze
Propeller blades	5
Propeller shaft material	stainless steel
Manual bilge pump	yes
Electric bilge pump	yes
Bilge alarm	yes
Electrical installation	24/230V
Generator	2x Onan 27 kW
Running hours generator	100
Generator 2	yes



Running hours generator 2	50
Start battery	yes
Service battery	yes
Navigation Battery	yes
Generator battery	yes
Battery monitor	yes
Battery charger	2x Victron Energy Skylla-TG 24W/30Amp
Inverter	2x Victron Energy MultiPlus
Shorepower	yes
Insulation transformer	yes
Watermaker	yes
Stabilizers	Zero speed
Trimtabs	yes
Extra info	Air compressor
Extra info	Yachtcontrol remote

NAVIGATION

Compass	yes
Compass on flybridge	yes
Electric compass	On pilot
Multi control display	Bonning
Depth sounder	yes
Log	yes
Windset	yes
Repeater	yes
Fish finder	Raymarine 12"
VHF	yes
Autopilot	yes
Rudder angle indicator	yes
Radar	yes
GPS	yes



Plotter	yes
Plotter/GPS	yes
AIS transceiver	yes
Camera	yes
Navigation lights	yes
Extra info	Wheel house 3 x 12" navigation selectable + one camera monitor

EQUIPMENT

Fixed windscreen	yes
Cockpit cover	yes
Bimini	yes
Sun awning	All blinds on main deck are electric
Winter cover	yes
Cockpit cushions	yes
Cockpit table	yes
Cockpit chairs	yes
Bathing platform	yes
Boarding ladder	yes
Transom door	yes
Gangway	Hydraulic
Deck shower	yes
Anchor	2x stainless steel
Anchor chain	yes
Windlass	yes
Deck crane	yes
Sea railing	yes
Life raft	Zodiac Survitec
Life raft (pers)	12
Wiper	yes
Horn	yes
Radar reflector	yes




Mooring lines	yes
TV	yes
TV receiver	yes
Radio	yes
Radio-cd player	yes
iPod connection	yes
Surround Sound System	yes
Sub-woofer	yes
Cockpit speakers	yes
Speakers in salon	yes
Speakers in cabin	yes
Fire extinguisher	yes
Extinguisher in engine room	yes
Auto extinguisher system	yes
Extra info	Dive compressor available



HORIZON FD85





DE VALK

360°

Virtual Tour

See link in Broker's Comments

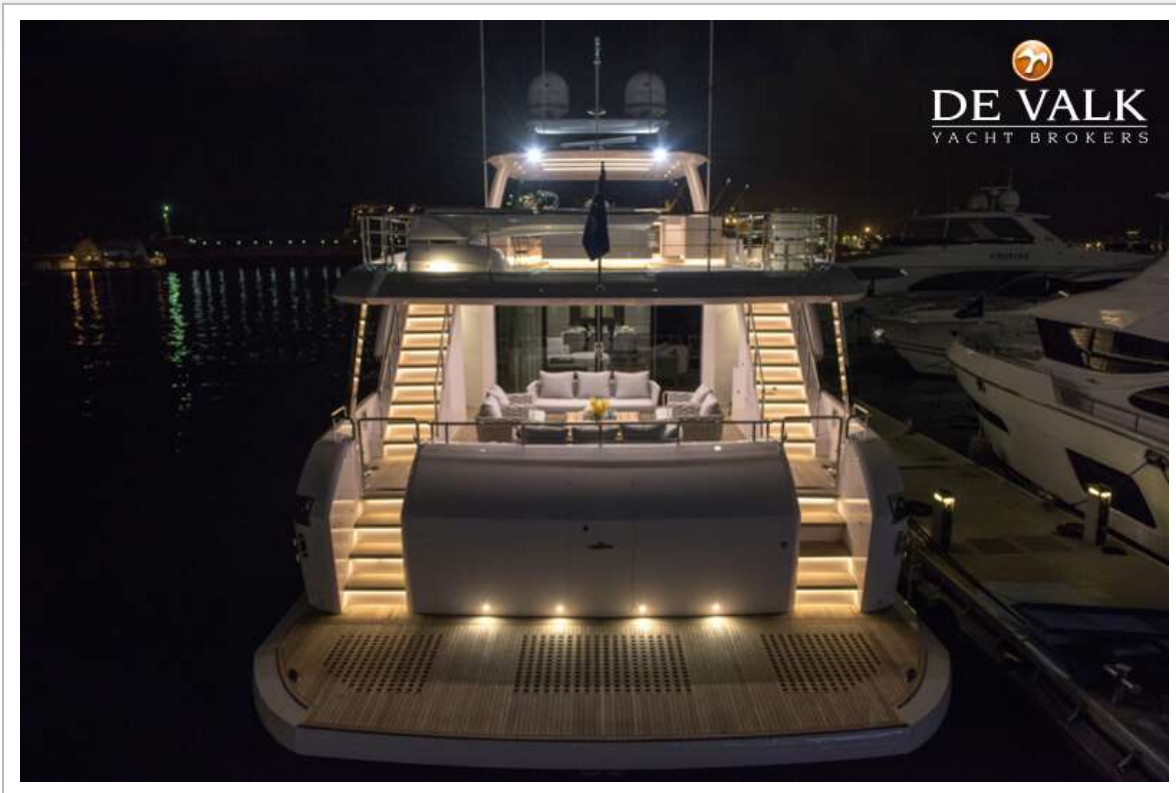
The graphic features a large red circular arrow pointing to the right, with the text '360°' above it and 'Virtual Tour' below it. The text 'See link in Broker's Comments' is in red. The logo 'DE VALK' is in the top right corner.



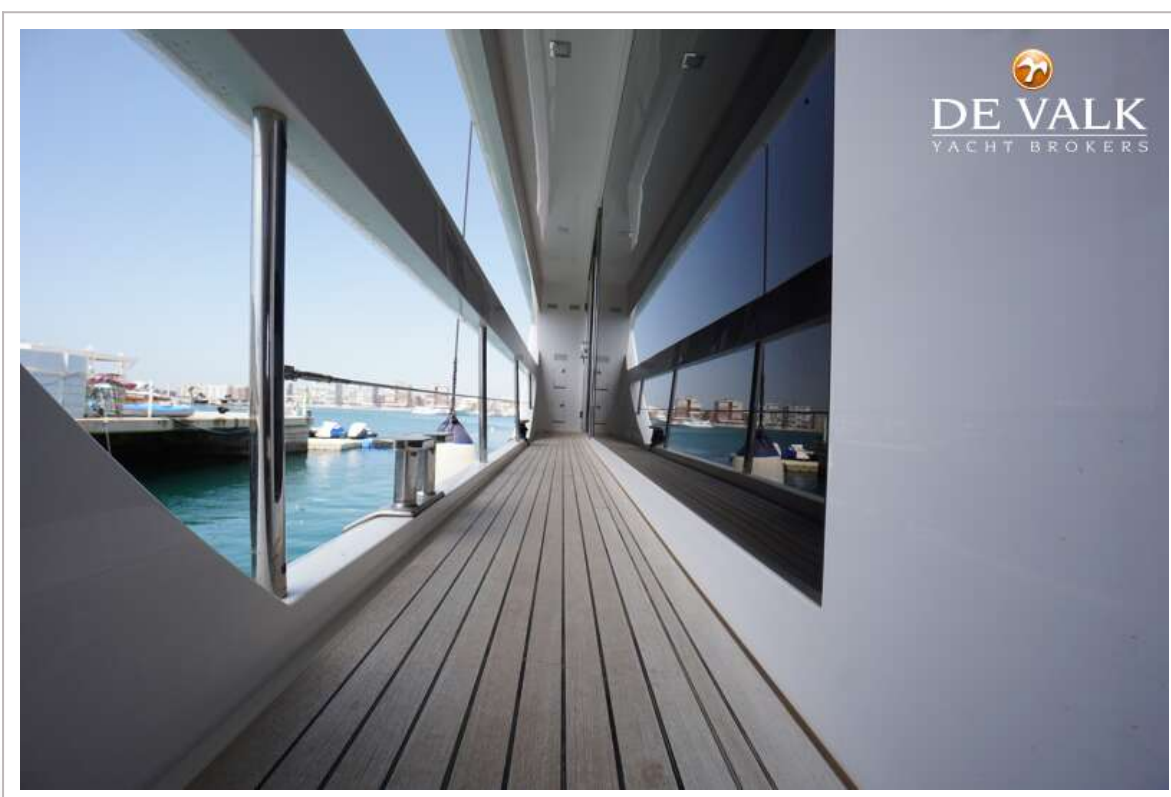
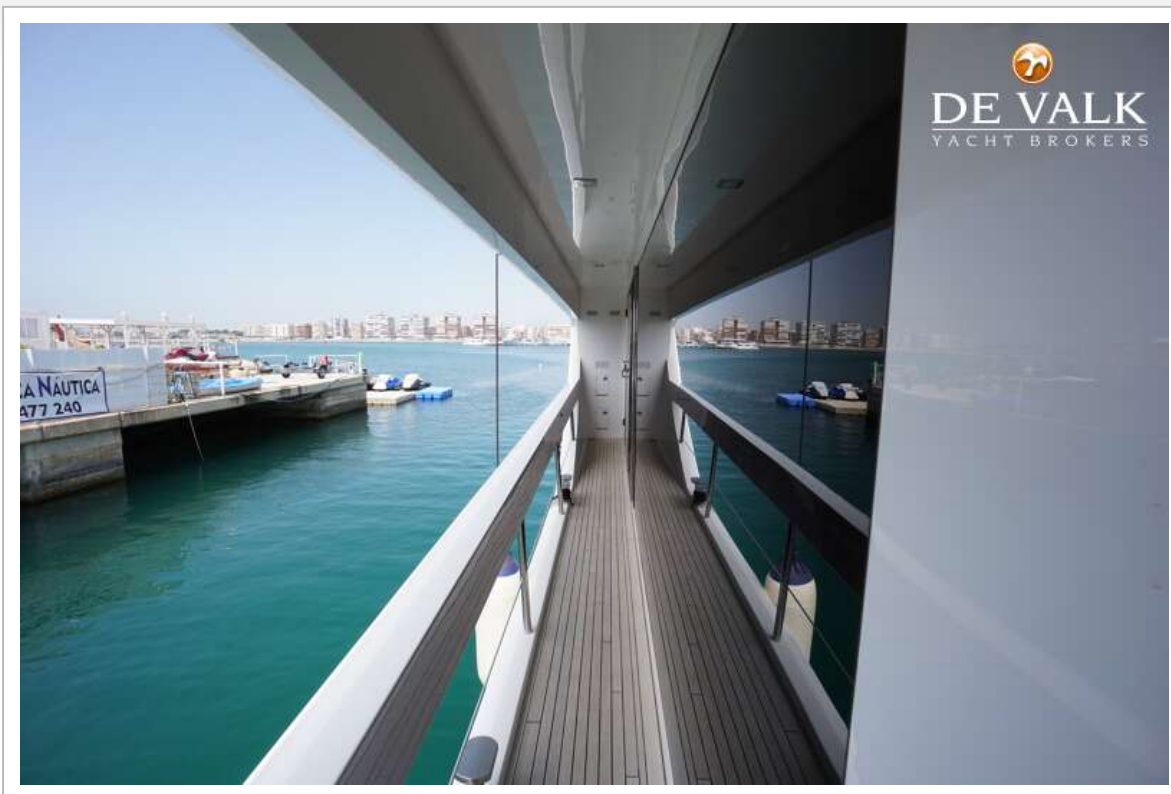
HORIZON FD85



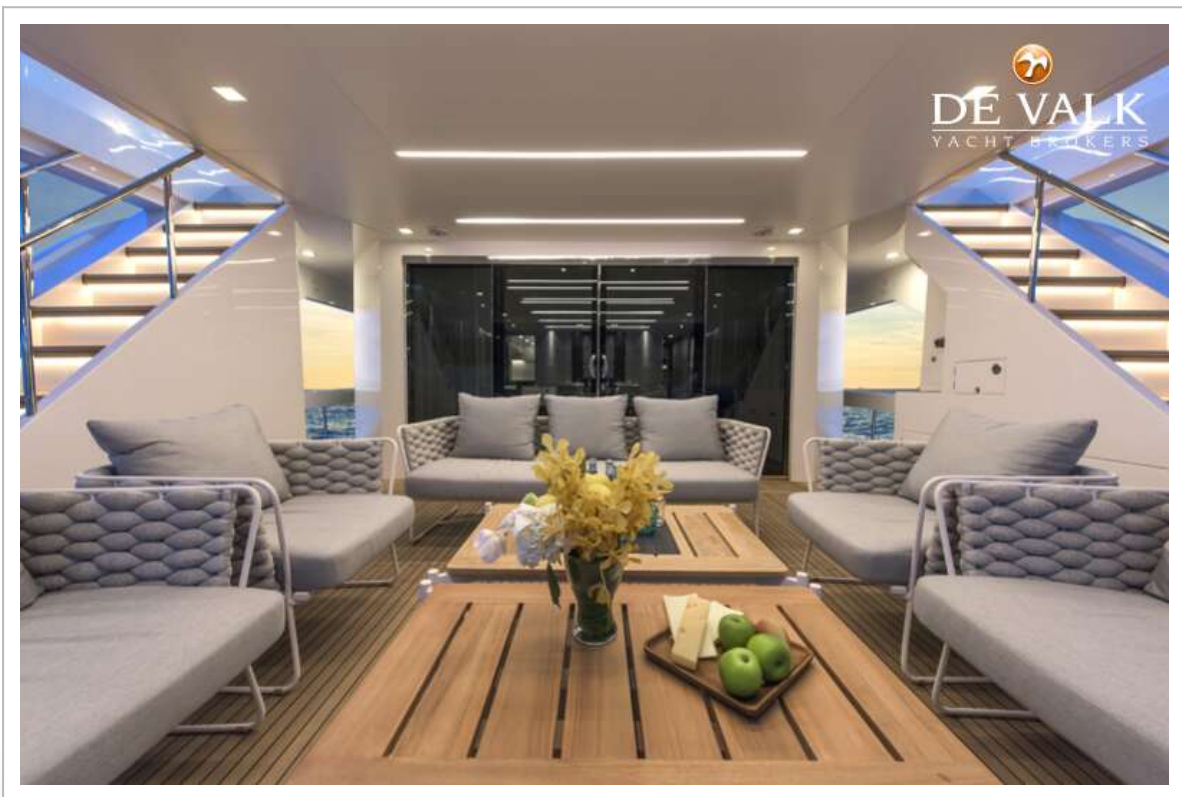
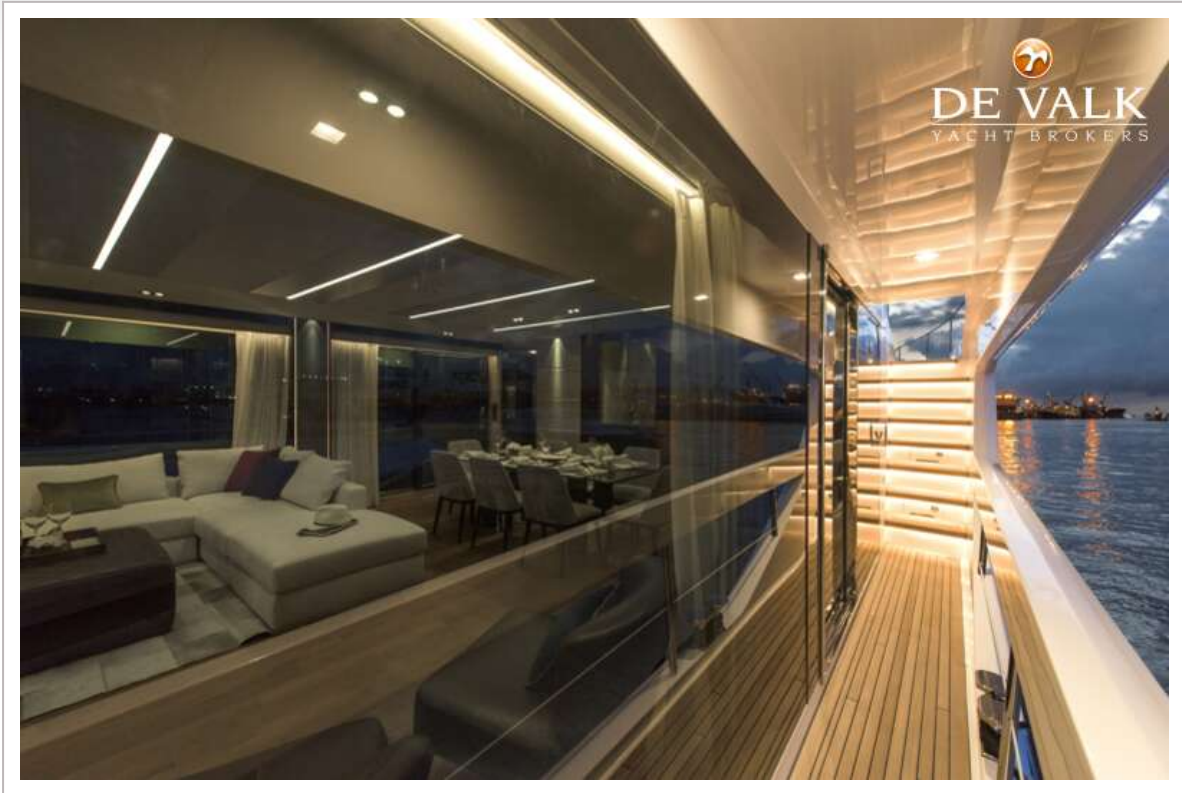
HORIZON FD85



HORIZON FD85



HORIZON FD85



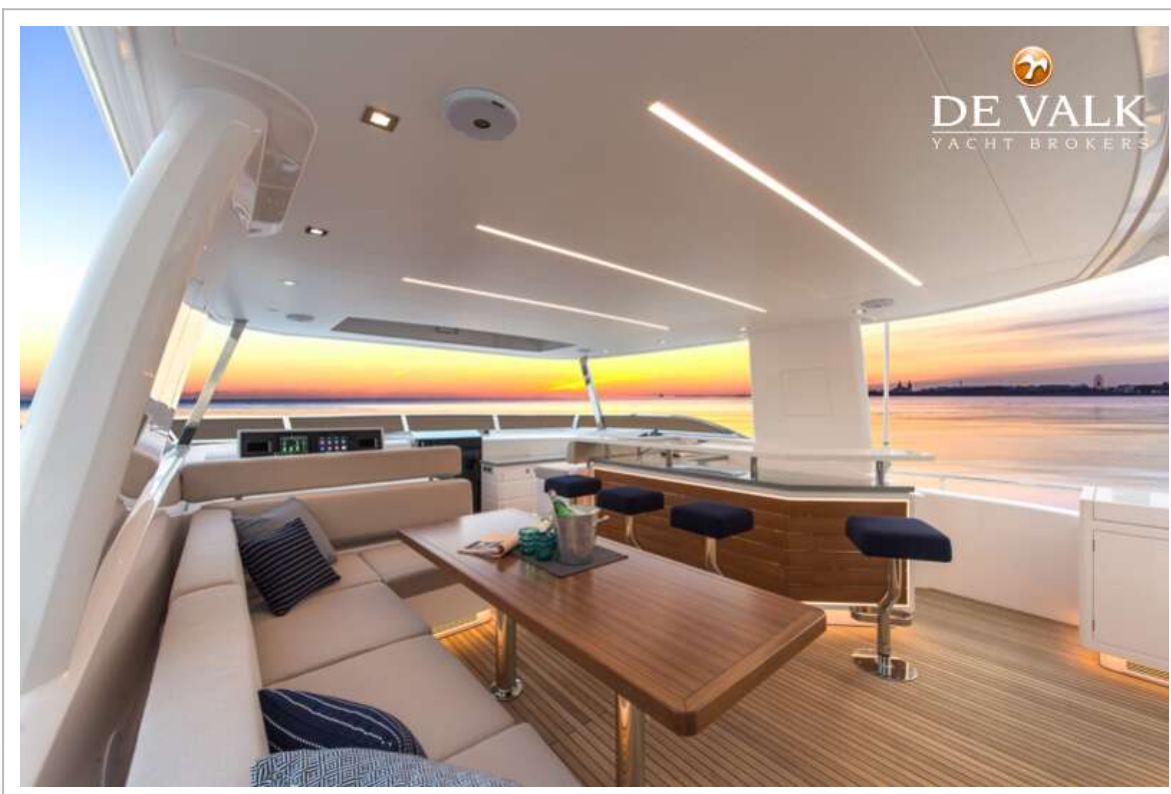
HORIZON FD85



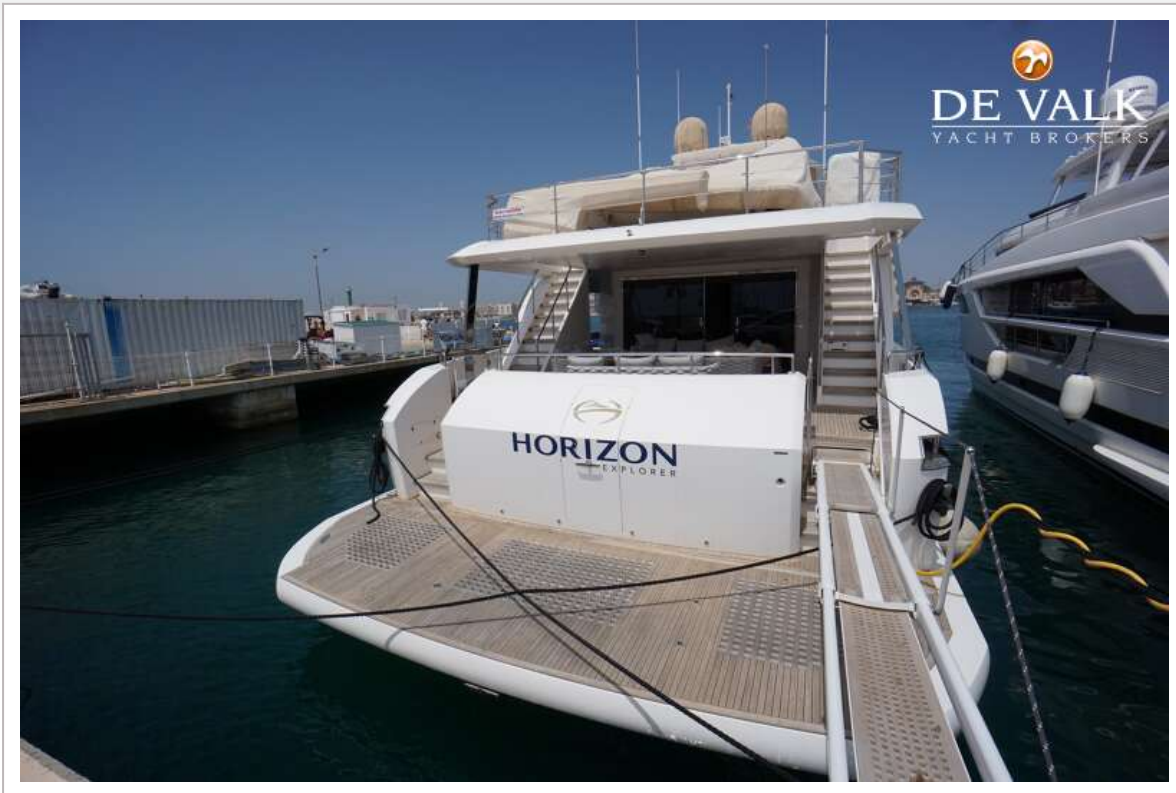
HORIZON FD85



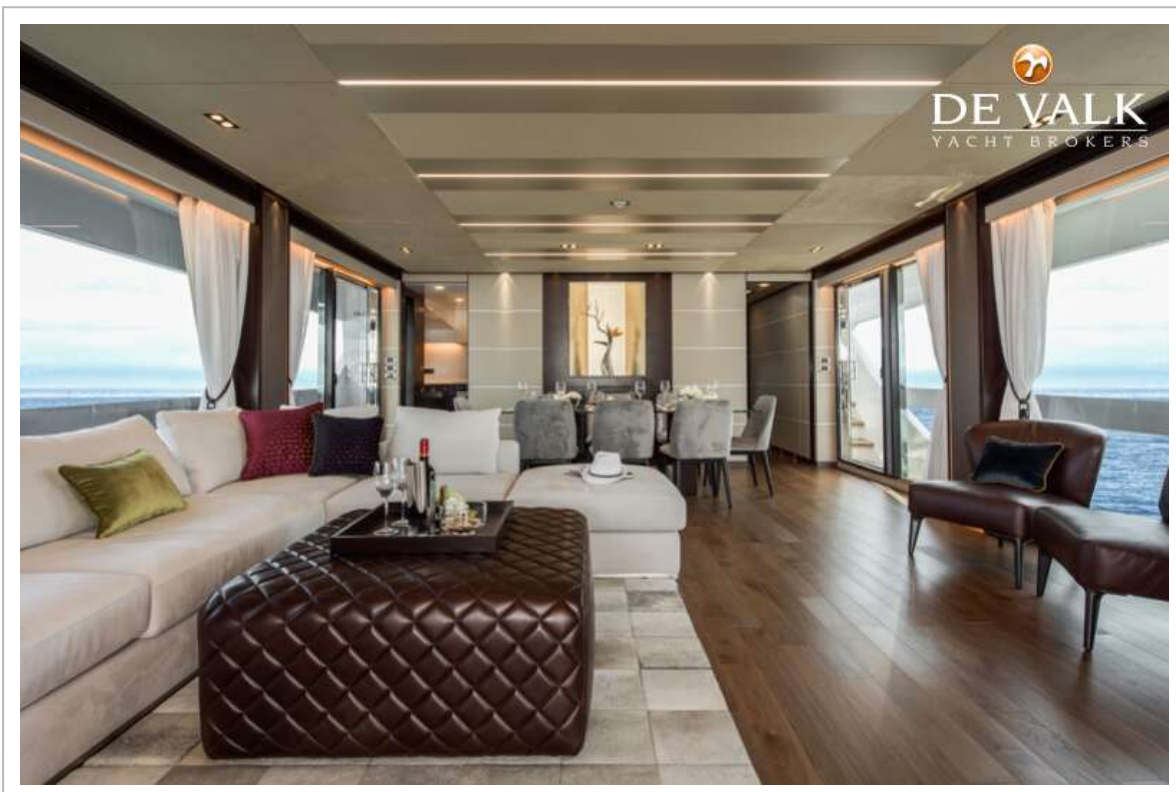
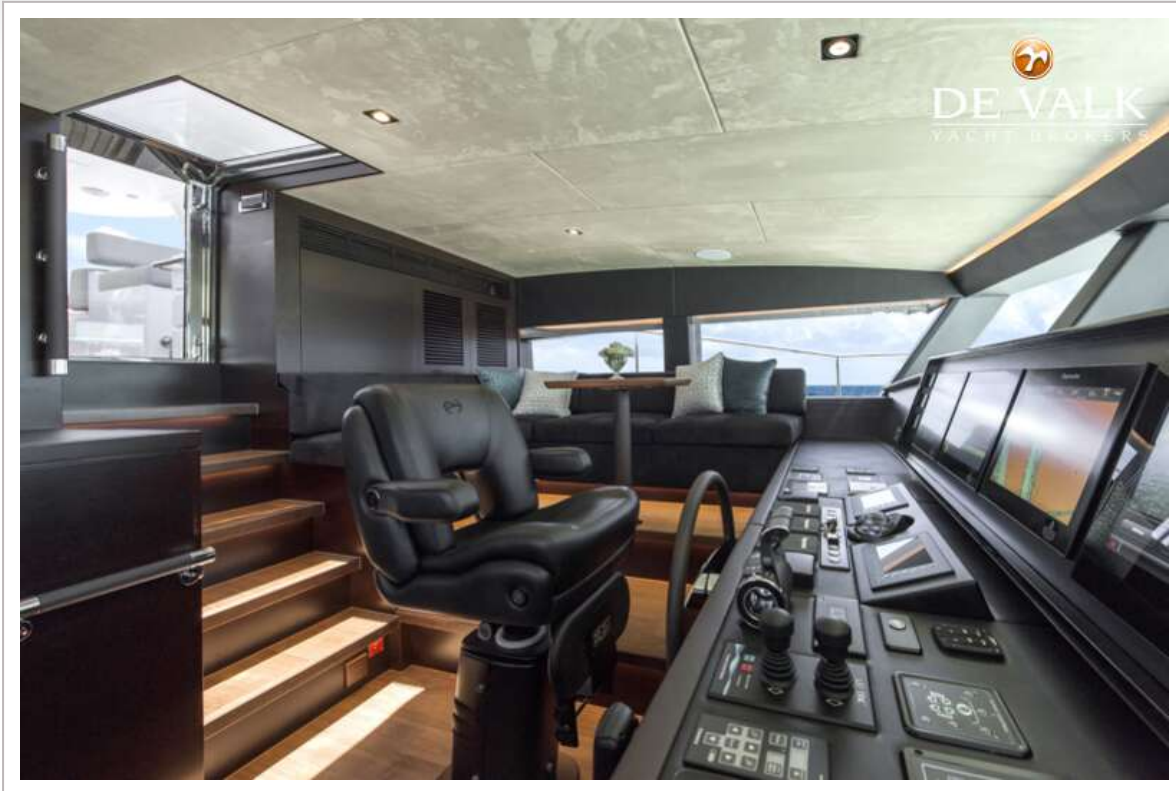
HORIZON FD85



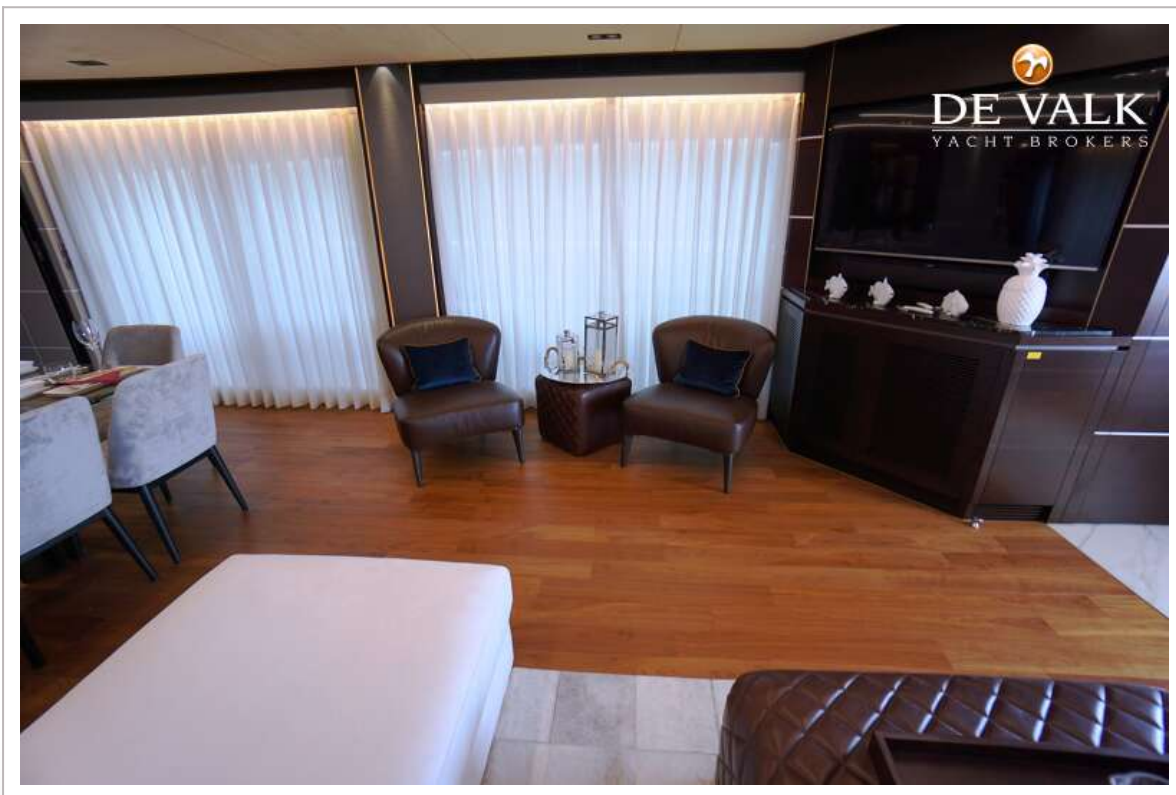
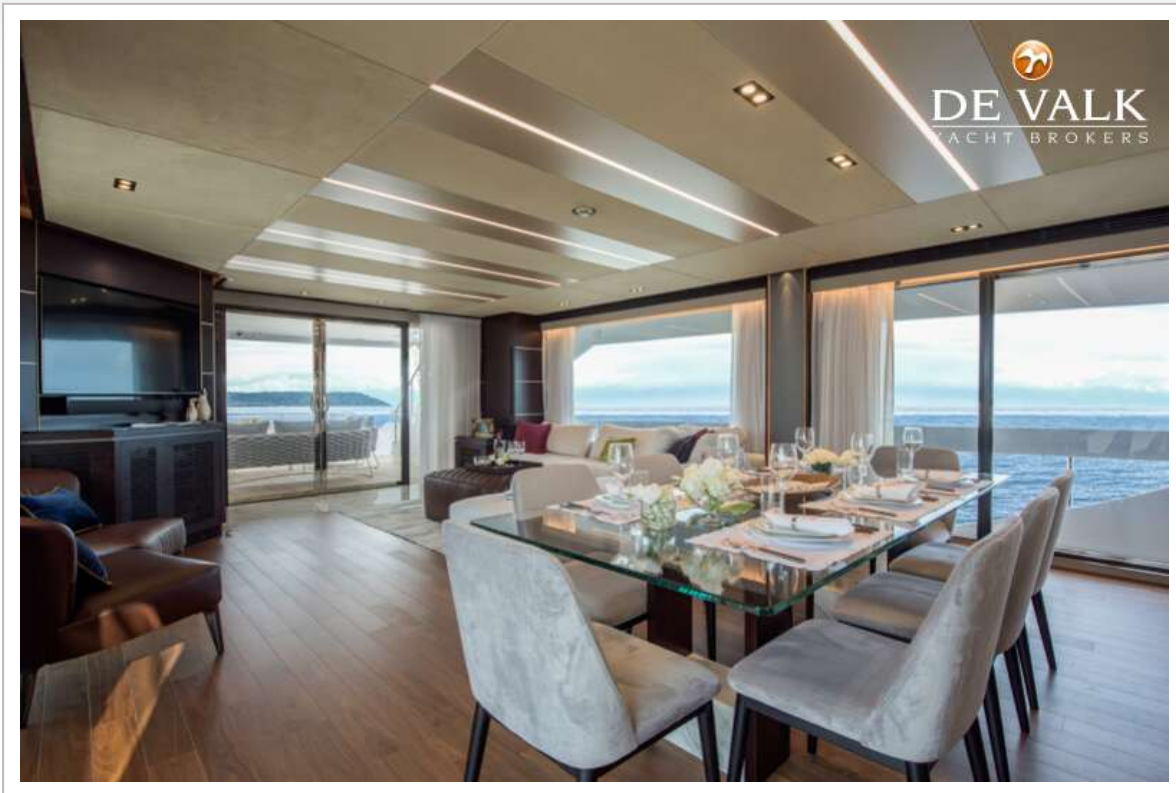
HORIZON FD85



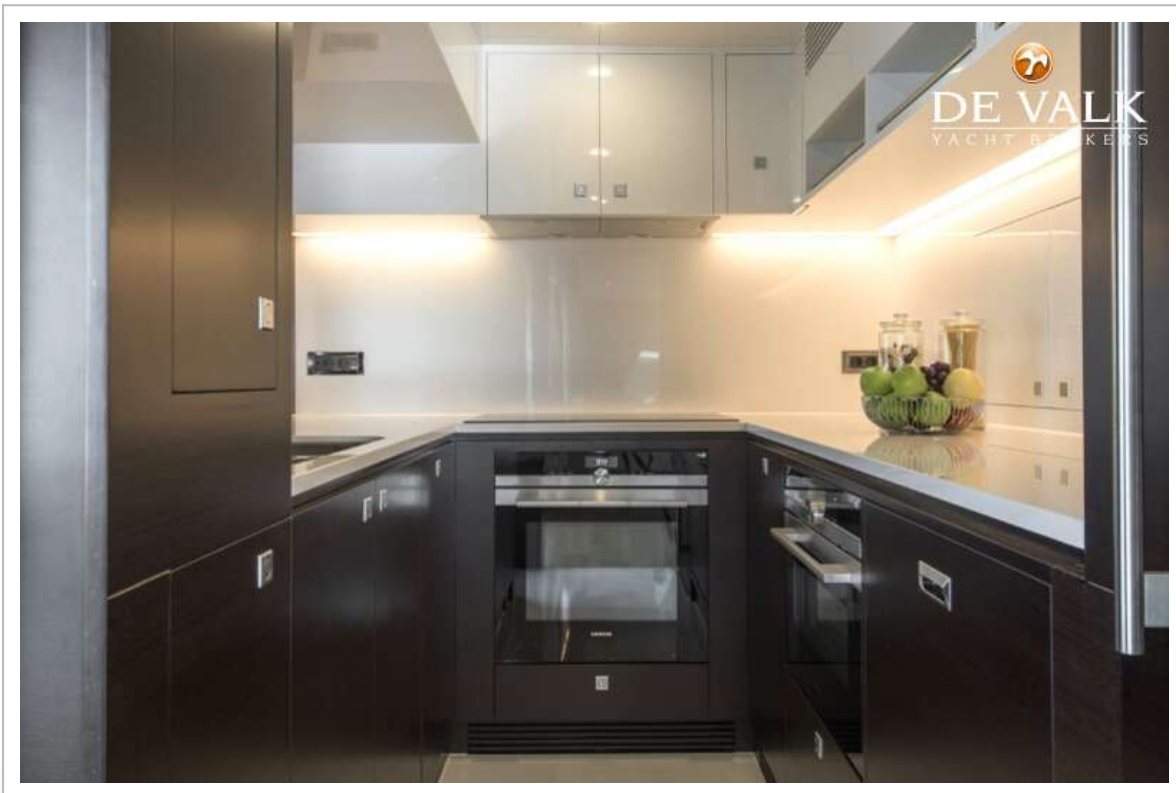
HORIZON FD85



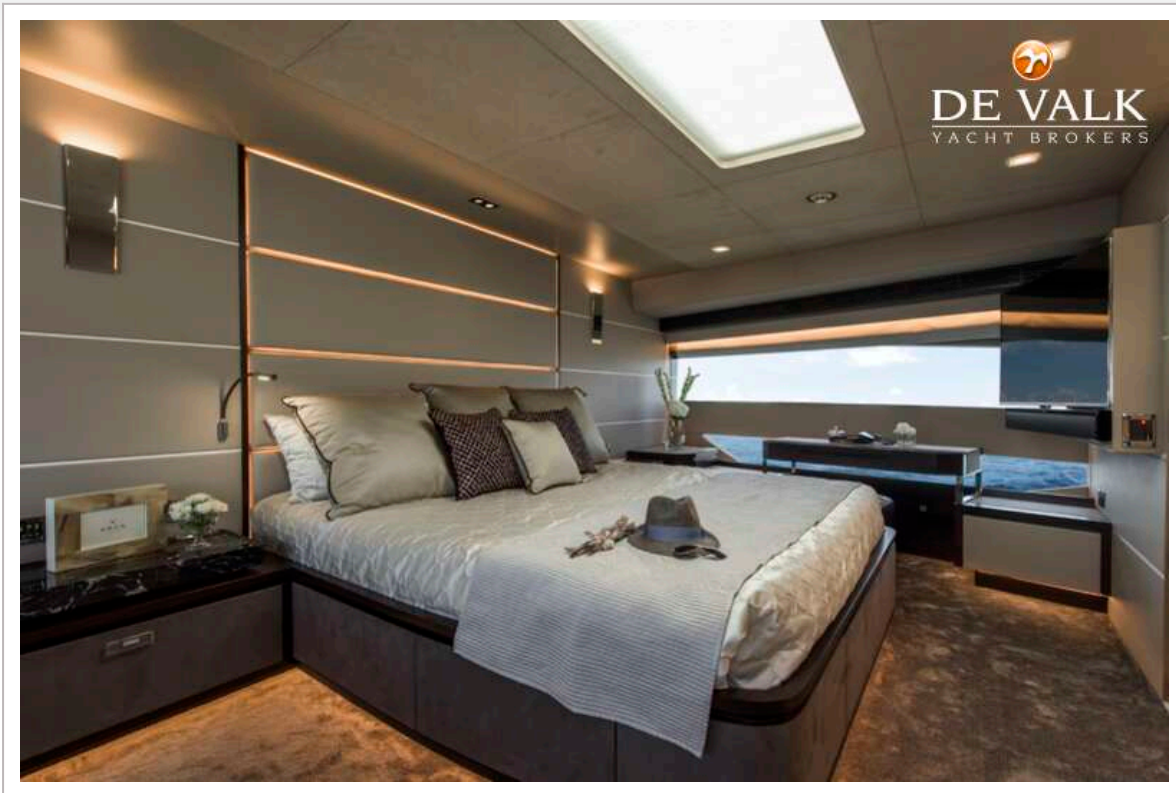
HORIZON FD85



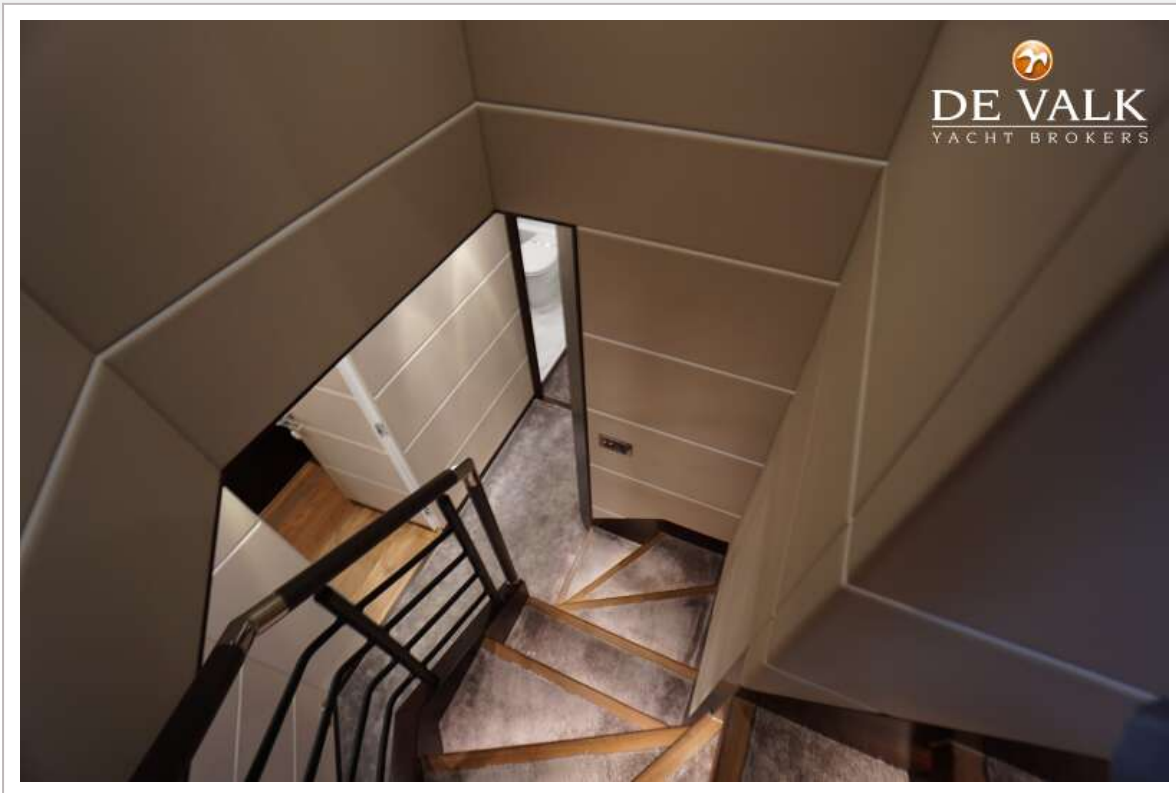
HORIZON FD85



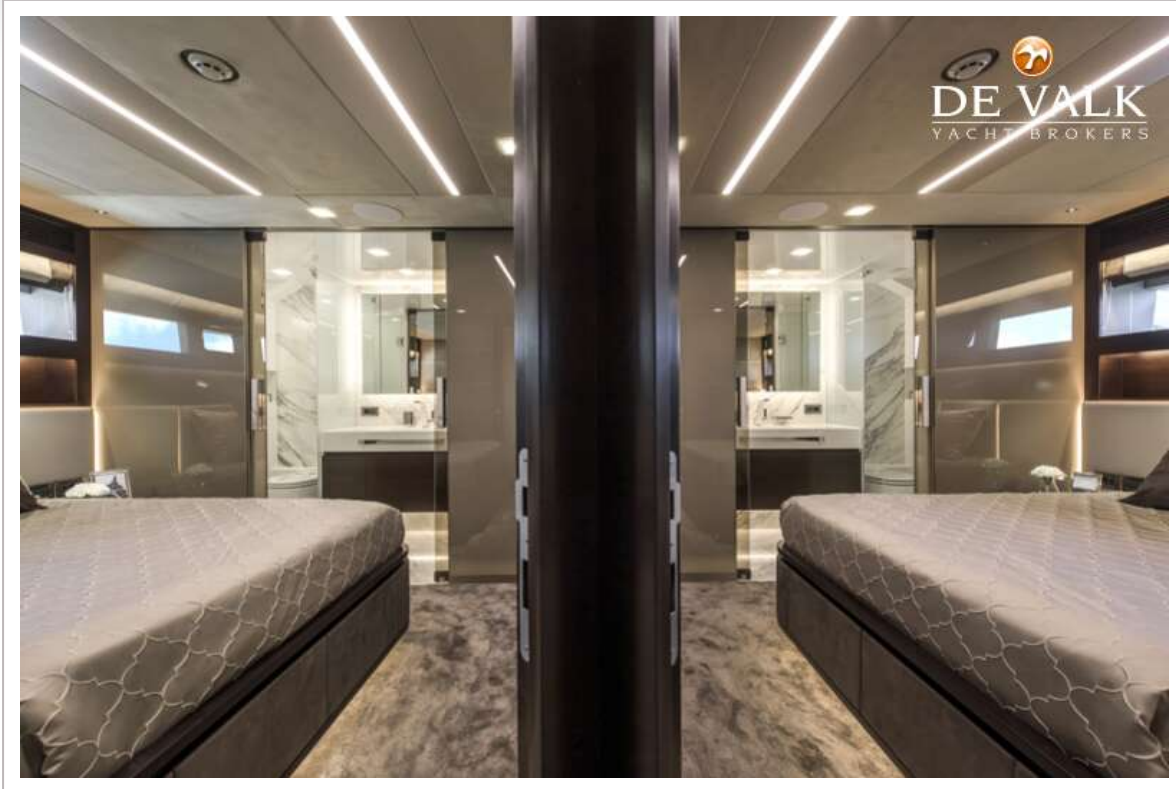
HORIZON FD85



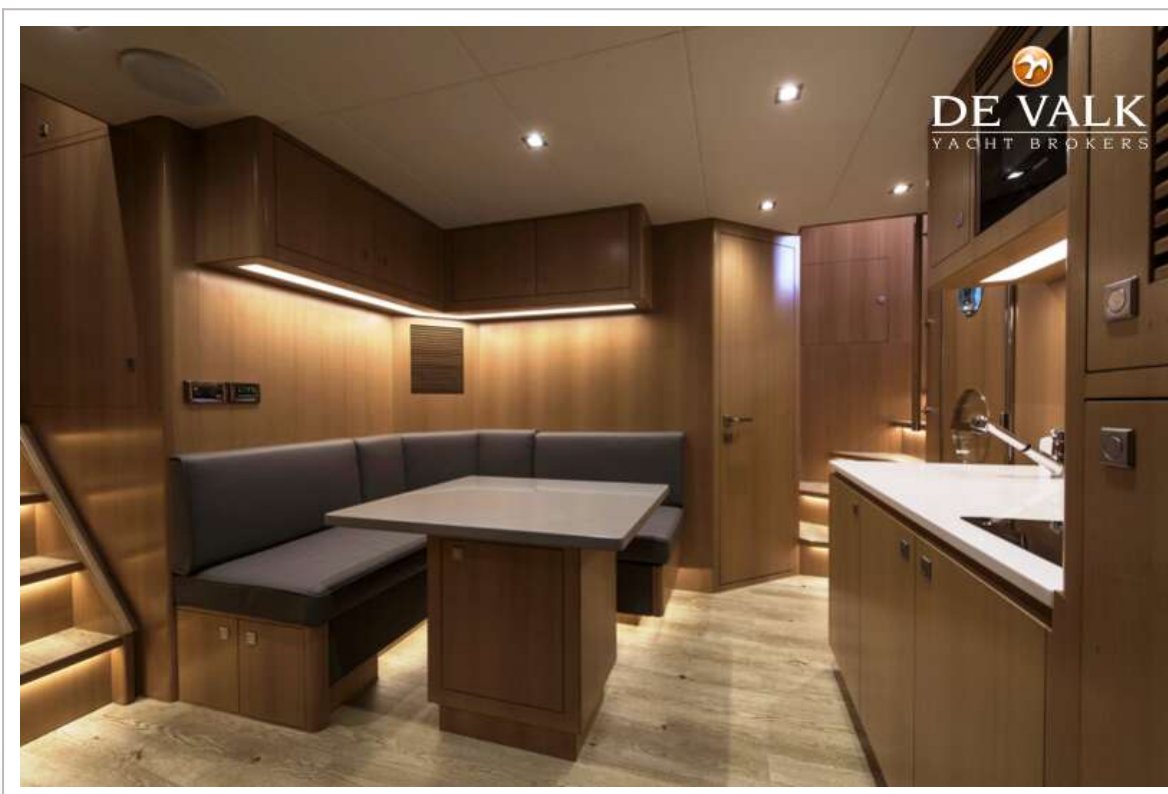
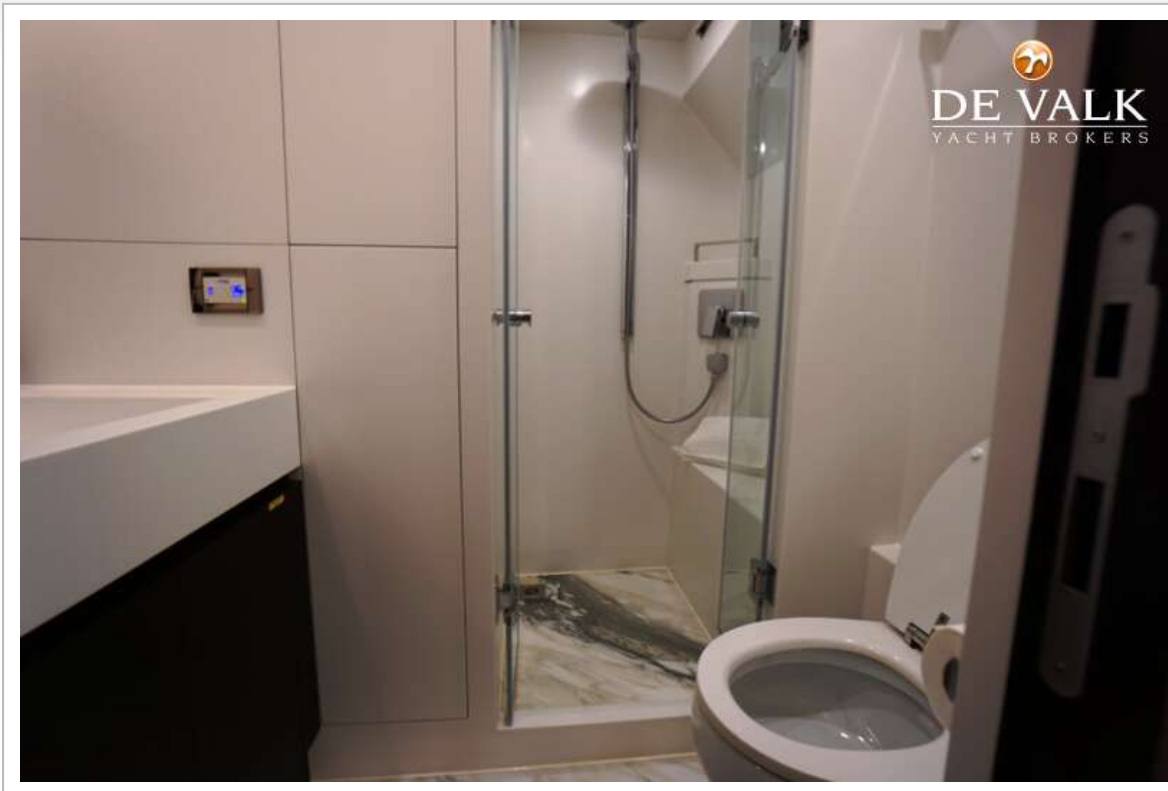
HORIZON FD85



HORIZON FD85



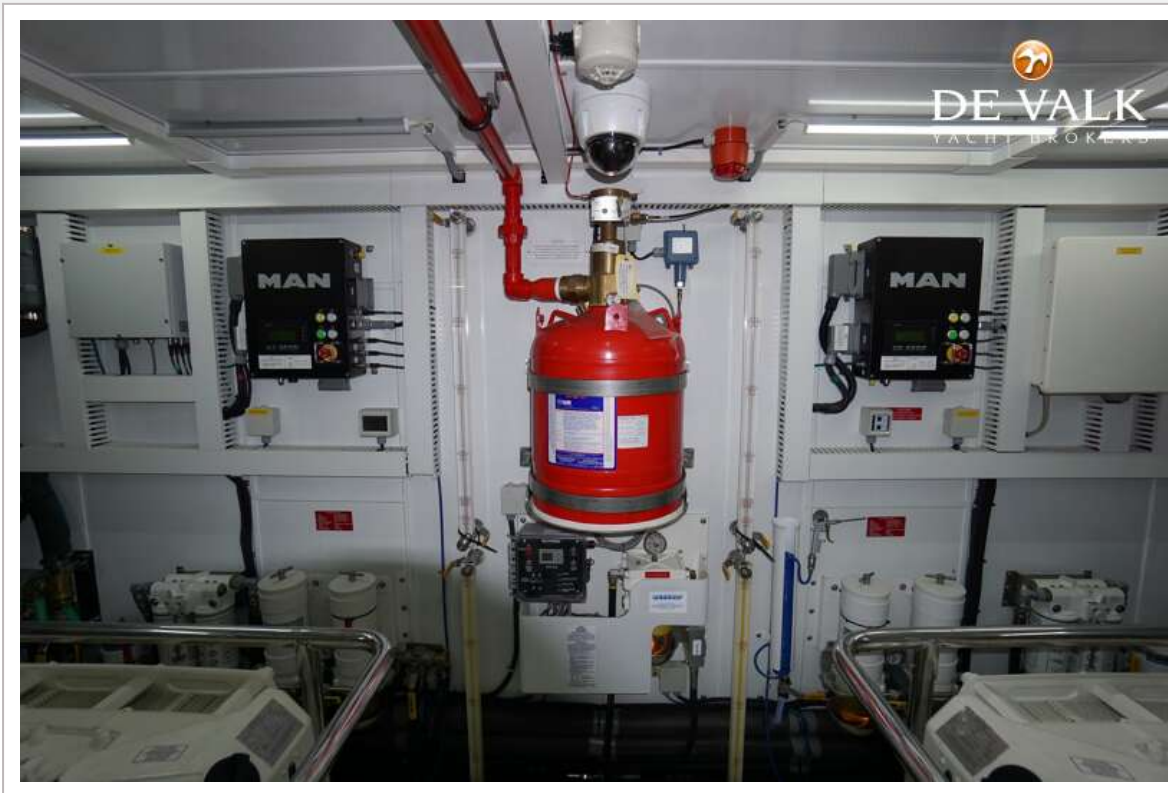
HORIZON FD85



HORIZON FD85



HORIZON FD85



Horizon **FD85** DE VALK Motoryacht BROKERS

L.O.A	85'-6 1/2" (26.07 m)
L.W.L	73'-3 1/2" (22.34 M)
Beam	23'-3" (7.07m)
Draft	5'-9" (1.79 M)
Fuel	3,480 US gal. (13,173 ltrs.)
Fresh Water	400 US gal. (1,514 ltrs.)
Displacement (Half Load)	196,210 lbs (89 tons)
Engines	Twin MAN 1200 HP
Generator	2 x Onan 27kW (50Hz)
Number of Cabins	7
Capacity	42
Top Speed (Half Load)	16.5 Knots
Cruising Range (Half load)	10 @1760NM Knots
Indoor Area	215.5 m ²
Outdoor Area	164.5 m ²



HORIZON FD85

