



JEANNEAU SUN ODYSSEY 49

JEANNEAU SUN ODYSSEY 49

BROKER'S COMMENTS

This beautiful blue Jeanneau Sun Odyssey 49 has an owners version interior that is very spacious with ample headroom, stowage space and three large cabins. Fully equipped with electric winches, bowthruster and lot's of equipment. The 'Grand Cru' is ready to go!

Sander van der Voorn

SPECIFICATIONS

Dimensions	14.98 x 4.49 x 2.15 (m)	Builder	Jeanneau, Les Herbiers
Built	2005	Cabins	3
Material	GRP	Berths	8
Engine(s)	1 x Yanmar 4JH3-HTE diesel	Hp/Kw	100.00 (hp), 73.50 (kw)
Asking price	sold (VAT)	Lying	elsewhere / Not at sales office

CONTACT

Sales office	De Valk Monnickendam	Telephone	+31 299 65 63 50
Address	Hoogedijk 6 1145 PM Katwoude The Netherlands	E-mail	monnickendam@devalk.nl

DISCLAIMER

These particulars are given in good faith as supplied but cannot be guaranteed.



GENERAL

Model	JEANNEAU SUN ODYSSEY 49
Type	sailing yacht
LOA (m)	14,98
LWL (m)	12,90
Beam (m)	4,49
Draft (m)	2,15
Air draft (m)	21,00
Headroom (m)	2,00
Year built	2005
Builder	Jeanneau, Les Herbiers
Country	France
Designer	Philippe Braind
Displacement (t)	12,6
Ballast (tonnes)	cast iron 3,75
Gross tonnage	21
Net tonnage	6
CE norm	A
Hull material	GRP
Hull colour	blue
Hull shape	round-bilged
Keel type	bulb keel
Superstructure material	GRP
Rubbing strake	wood
Deck material	GRP
Deck finish	teak
Superstructure deck finish	non-skid moulded in
Cockpit deck finish	teak
Antifouling (year)	2019
Window material	polycarbonate
Deckhatch	9



Portholes	aluminium 4
Fuel tank (litre)	polyethylene 240 L.
Level indicator (fuel tank)	yes
Freshwater tank (litre)	polyethylene 700 L. in 3 tanks
Blackwater tank (litre)	polyethylene 40 L.
Blackwater tank extraction	deck extraction + uw line
Wheel steering	cable steering Lewmar
Emergency tiller	yes
More info on hull	Reinforced Kevlar

ACCOMMODATION

Cabins	3
Berths	8
Interior	teak
Floor	teak and holly
Open cockpit	yes
Saloon	U-shaped settee 2,00 M.
Heating	diesel ducted hot air Webasto
Heating 2	diesel ducted hot air Webasto
Chart table	yes
Dining room	yes
Dinette to convert into berth	yes
Galley	long galley
Countertop	corian
Sink	stainless steel 2x
Cooker	calor gas ENO 4-burner
Oven	yes
Microwave	Siemens
Fridge	230 L. with freezer compartment
Freezer	yes
Hot water system	220V + engine Boiler



JEANNEAU SUN ODYSSEY 49

Water pressure system	electrical
Manual and/or foot pump	yes
Coffee maker	Philips Senseo
Owners cabin	double bed
Bed length (m)	1,70 x 2,00 M.
Wardrobe	hanging/drawers/shelves
Bathroom	separate
Toilet	shared Jabsco
Toilet system	manual Jabsco
Wash basin	in the bathroom
Shower	shared
Guest cabin 1	double bed
Bed length (m)	2,00 M.
Wardrobe	hanging and shelves
Bathroom	separate
Toilet	shared
Toilet system	electric Jabsco
Wash basin	in the bathroom
Shower	shared
Guest cabin 2	double bed
Bed length (m)	2,00 M.
Wardrobe	hanging and shelves
Washing machine	Aquamatic 3,5 kg.

MACHINERY

No of engines	1
Make	Yanmar
Type	4JH3-HTE
HP	100
kW	73,50
Fuel	diesel



JEANNEAU SUN ODYSSEY 49

Year installed	2005
Maximum speed (kn)	8
Cruising speed (kn)	6,5
Engine hours	1800
Engine cooling system	freshwater heat exchanger
Drive	shaft
Engine controls	bowden cable
Gearbox	hydraulic
Bowthruster	electric Maxpower
Exhaust	watercooled
Propeller type	folding
Propeller blades	3
Propeller shaft material	stainless steel
Shaft lubrication	water
Manual bilge pump	yes
Electric bilge pump	yes
Electrical installation	12V/220V
Generator	wet exhaust 1,8 Kw (2017)
Running hours generator	30
Batteries	yes
Start battery	1x 110Ah (2015)
Service battery	4x 110Ah (2015)
Bowthruster battery	yes
Battery monitor	Scheiber
Battery charger	Cristac
Inverter	HQ 1500W
Solar panel	2 x 150 watt 2016
Diode battery combiners	yes
Shorepower	with cable

NAVIGATION



Compass	2x Plastimo
Electric compass	yes
Depth sounder	Raymarine ST60 Tridata
Log	Raymarine ST60 Tridata
Windset	Raymarine ST60
VHF	Raymarine Ray 54E
VHF handheld	Raymarine Ray 101E
Autopilot	Raymarine ST6001 + Remote smart controller
GPS	yes
Radar/GPS/plotter	Raymarine C120
Navtex	ICS NAV6
Wifi antenna	Receiver 2016
AIS transponder	yes
Extra info	yes

EQUIPMENT

Fixed windscreen	yes
Sprayhood with grab rail	yes
Cockpit cover	(2014)
Bimini	(2014)
Winter cover	(2014)
Window cover	yes
Cockpit table	yes
Bathing platform	yes
Boarding ladder	stainless steel
Transom door	yes
Deck shower	hot water
Anchor	Delta
Anchor chain	10mm.
Anchor 2	yes
Anchor chain	yes



Windlass	electrical Lewmar
Dinghy	yes
Outboard	Yamaha
Davits	yes
Davits controls	manual
Sea railing	wire
Grab rail (superstructure)	wood
Railing side opening gates	yes
Pulpit	yes
Life raft	container 2017
Life raft (pers)	container 6
Last life raft survey	2017
Fenders	yes
Mooring lines	yes
TV	LG
Radio-cd player	2x Sony
Cockpit speakers	yes
Speakers in salon	yes

RIGGING

Rigging	sloop-cutter
Standing rigging	wire
Brand mast	Sparcraft
Material mast	aluminium
Spreaders	2x 2
Mainsail	yes
Stoway mast	Technique voile
Genoa	with UV-stroke
Genoa furler	Profurl
Gennaker	2016
Stormjib	2016

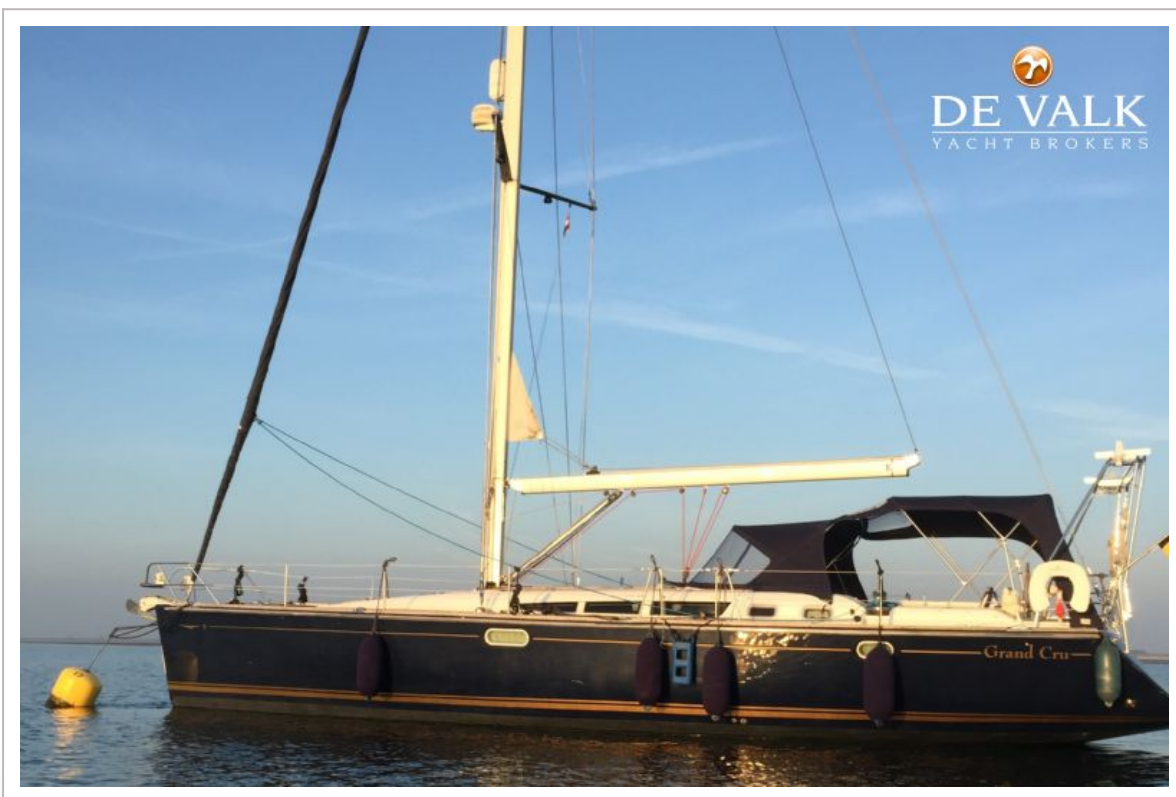
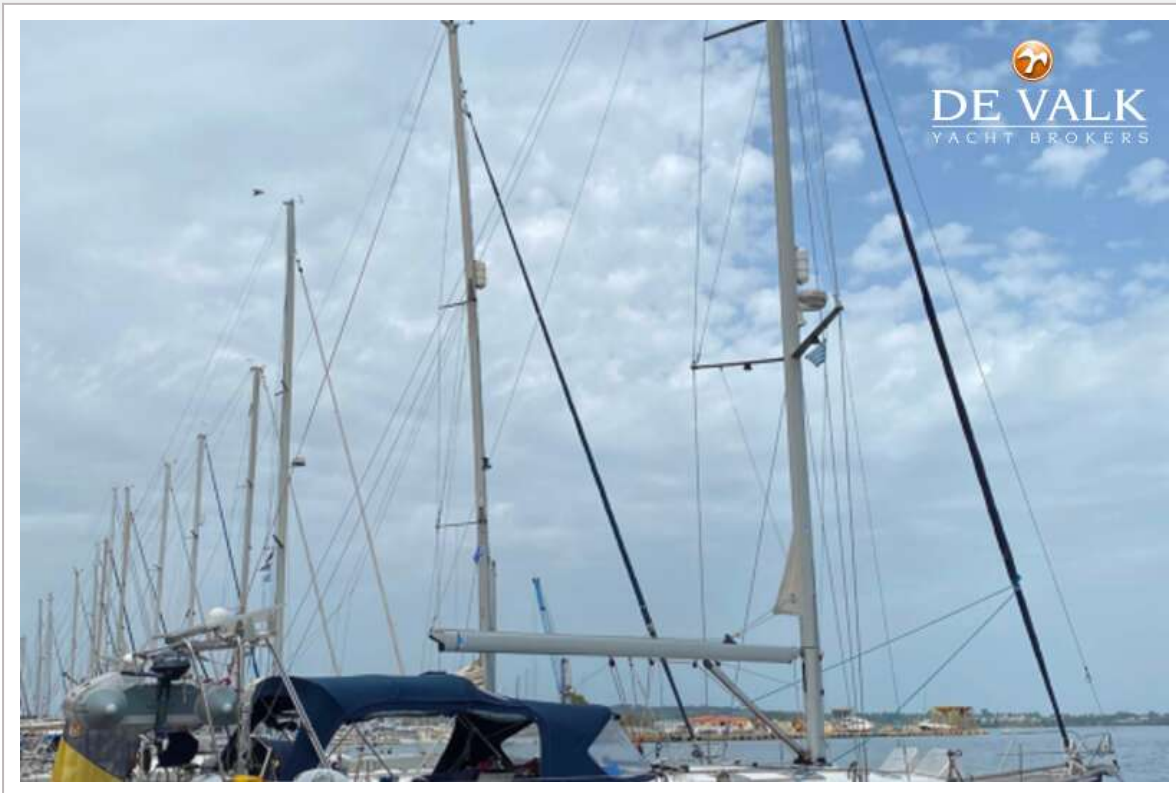


Reefing System	main in-mast furling
Boomvang	gasspring Sparcraft ocean
Primary sheet winch	2x Harken 59 power ratio two speed elec.
Secondary sheet winch	1x Harken 44 power ratio two speed elec. 1x Harken 44 manual
Spi-pole	aluminium Selden
Extra info	Sparcraft performance boom



JEANNEAU SUN ODYSSEY 49





JEANNEAU SUN ODYSSEY 49





JEANNEAU SUN ODYSSEY 49



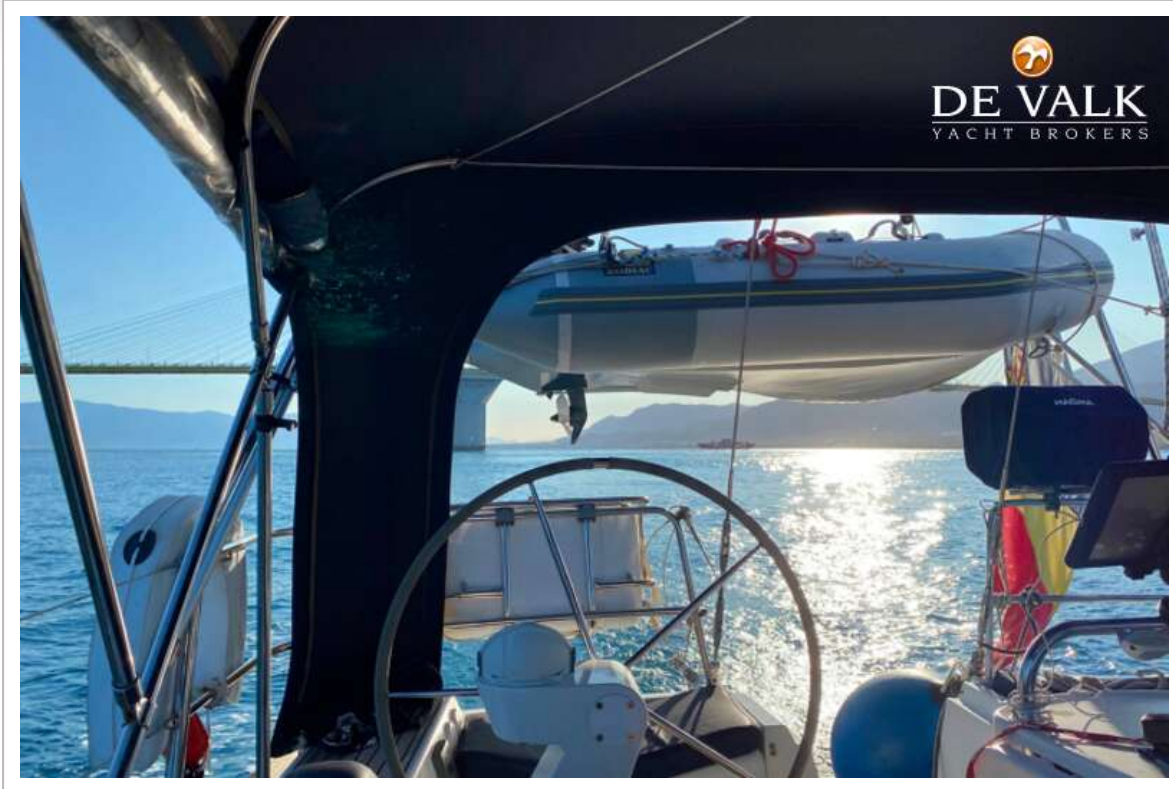
JEANNEAU SUN ODYSSEY 49





JEANNEAU SUN ODYSSEY 49





JEANNEAU SUN ODYSSEY 49



JEANNEAU SUN ODYSSEY 49



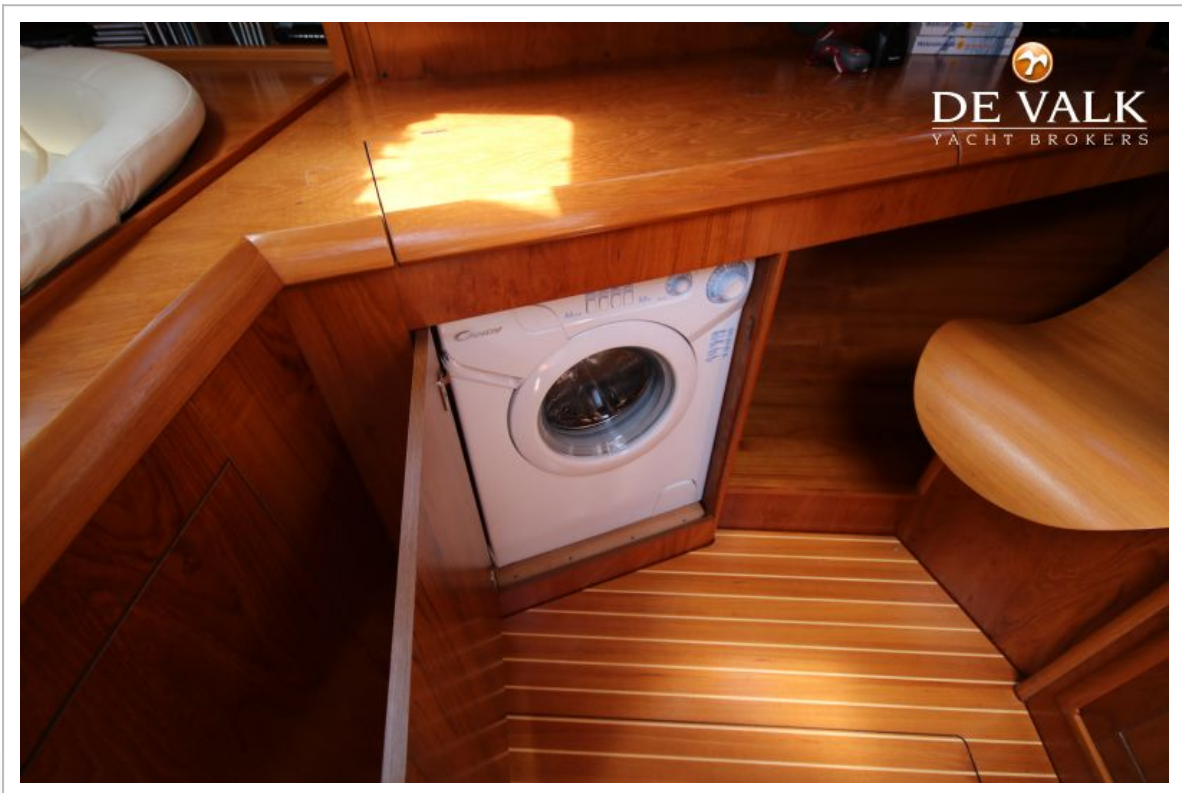
JEANNEAU SUN ODYSSEY 49



JEANNEAU SUN ODYSSEY 49



JEANNEAU SUN ODYSSEY 49

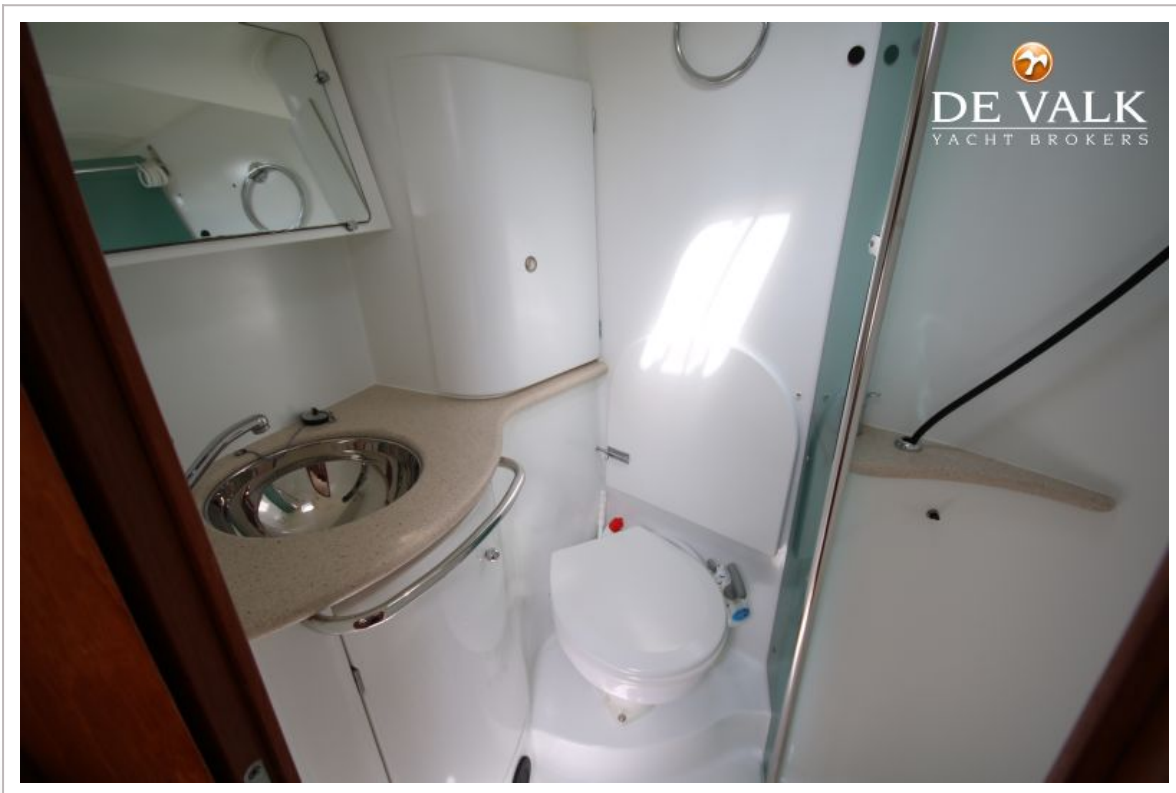


JEANNEAU SUN ODYSSEY 49



JEANNEAU SUN ODYSSEY 49





JEANNEAU SUN ODYSSEY 49

