



DE VALK
YACHT BROKERS



BAVARIA 40



DE VALK
YACHT BROKERS

BAVARIA 40

BROKER'S COMMENTS

Well kept and well equipped Bavaria 40, never chartered and carefully used by her private owner. She is an ideal cruising yacht with an furling in-mast main sail and furling genoa. Inside two large double cabins, two marine heads, lots of storage space and headroom of 1,95 m. This yacht has a bowthruster, diesel heating system and a maintenance free synthetic teak deck ! She is moored in our sales marina and can be visited 7 days a week.

Harald Padberg

SPECIFICATIONS

Dimensions	12.48 x 3.99 x 1.65 (m)	Builder	Bavaria Yachtbau GmbH, Giebelstadt
Built	2001	Cabins	2
Material	GRP	Berths	4
Engine(s)	1 x Volvo Penta MD22L BT diesel	Hp/Kw	50.00 (hp), 36.80 (kw)
Asking price	sold (VAT)	Lying	at sales office

CONTACT

Sales office	De Valk Monnickendam	Telephone	+31 299 65 63 50
Address	Hoogedijk 6 1145 PM Katwoude The Netherlands	E-mail	monnickendam@devalk.nl

DISCLAIMER

These particulars are given in good faith as supplied but cannot be guaranteed.



GENERAL

Model	BAVARIA 40
Type	sailing yacht
LOA (m)	12,48
LWL (m)	10,95
Beam (m)	3,99
Draft (m)	1,65
Headroom (m)	1,95
Year built	2001
Builder	Bavaria Yachtbau GmbH, Giebelstadt
Country	Germany
Designer	J & J Design
Ballast (tonnes)	cast iron 2700 kg
CE norm	A
Hull material	GRP
Hull colour	white
Hull shape	round-bilged
Keel type	bulb keel
Superstructure material	GRP
Rubbing strake	stainless steel
Deck material	GRP
Deck finish	synthetic teak - Permateek (2017)
Superstructure deck finish	non-skid moulded in
Cockpit deck finish	synthetic teak
Antifouling (year)	2023
Dorades	1 x
Window frame	aluminium
Window material	perspex
Deckhatch	2 x deck hatch large & 5 x small
Portholes	aluminium - 6 x
Radar arch	non collapsible - In mast / on mast / am Mast



Fuel tank (litre)	polyethylene - 1 x 150 L
Level indicator (fuel tank)	yes
Freshwater tank (litre)	polyethylene - 2 x 150 L
Level indicator (freshwater)	yes
Blackwater tank (litre)	polyethylene
Blackwater tank extraction	deck extraction
Wheel steering	mechanical
Emergency tiller	yes

ACCOMMODATION

Cabins	2
Berths	4
Interior	mahogany
Floor	teak and holly
Saloon	yes
Headroom saloon (m)	1.95 m
Heating	diesel ducted hot air - Webasto 3500
Chart table	yes
Aft Cabin	1 x
Galley	U-shaped
Countertop	plastic
Sink	stainless steel - 2 x
Cooker	calor gas - 2 burner / pits / Brenner Bavaria Yachts
Oven	yes
Fridge	Top Loader Weaco (compressor 2017)
Hot water system	220V + engine + Boiler / Kessel
Water pressure system	electrical
Crockery	yes
Owners cabin	v-bed
Wardrobe	drawers and shelves
Bathroom	en suite



Toilet	en suite
Toilet system	manual - Jabsco
Wash basin	in the bathroom
Shower	en suite
Guest cabin 1	double bed
Wardrobe	drawers and shelves
Bathroom	separate
Toilet	separate
Toilet system	manual - Jabsco
Shower	separate
Extra info	Toilets replaced in 2018 & 2019
Extra info	Webasto heating overhauled in 2015

MACHINERY

No of engines	1
Make	Volvo Penta
Type	MD22L BT
HP	50
kW	36.80
Fuel	diesel
Year installed	2001
Engine hours	Ca. 3500
Engine cooling system	freshwater heat exchanger
Drive	sail-drive
Saildrive seal	replaced in 2015
Engine controls	bowden cable
Bowthruster	electric - Vetus 75 KGF - 2007
Exhaust	watercooled
Propeller type	folding
Propeller blades	3 x (hub kit and blades new in 2019)
Manual bilge pump	in cockpit



Electric bilge pump	yes
Electrical installation	12v / 220v
Start battery	2 x new in 2019
Service battery	2 x new in 2022
Inverter	Victron Energy Phoenix 12 - 500
Solar panel	2 x 110w + Blue Solar smart solar charge controler at chart table
Shorepower	with cable
Extra info	throttle + gear box cable replaced 2021 + 2022

NAVIGATION

Compass	Plastimo Olympic 115
Multi control display	Raytheon ST60 Multi
Depth sounder/log	Raytheon ST60 Tridata
Windset	Raytheon ST60 Wind (needs to be checked)
VHF	Shipmate RS 8300
Autopilot	Raymarine EV-1+ & handheld Raymarine S100 Remote
Plotter/GPS	Raymarine A70D multifunction
Navtex	Nasa MarineTarget Navtex Pro
Electronis chart(s)	Navionics Gold Norway / Sweden + cartography adapter
AIS receiver	integrated in plotter
AIS transponder	integrated in plotter
Navigation lights	yes

EQUIPMENT

Sprayhood	+ console cover new in 2023
Sprayhood with grab rail	yes
Bimini	yes
Cockpit cushions	yes
Cockpit table	yes
Bathing platform	yes



Transom door	removable part / seat
Deck shower	yes
Anchor	yes
Anchor chain	yes
Windlass	electrical - Lofrans Cayman 88
Dinghy	Talamex TLA250 (serial No. NL-LAL TDO14H819)
Outboard	Yamaha 5CMH, 5 PS (6MO S 006901 T)
Outboard support	yes
Sea railing	wire
Grab rail (superstructure)	stainless steel
Railing side opening gates	both star & port side
Pushpit	stainless steel
Pulpit	stainless steel
Safety harness	2x
Lifebuoy	Plastimo Rescue
Fenders	yes
Mooring lines	yes
Spare parts	yes
TV	Q-media
Radio-cd player	Sony
Speakers in salon	2 x
Clock - barometer	only a barometer
Fire extinguisher	yes

RIGGING

Rigging	sloop
Standing rigging	wire
Brand mast	Seldén
Material mast	aluminium
Spreaders	2 x
Mainsail	32,20 m ² - 2001



Stoway mast	yes
Genoa	4140 m2 = 140% - 2011
Genoa furler	Furlex 300S
Reefing System	main in-mast furling
Backstay adjuster	tackle
Boomvang	mechanical and tackle - Seldén Rodkicker
Secondary sheet winch	2 x Harken 2 speed Power ratio 44
Halyard winches	2 x Harken 40 ST
Spi-pole	aluminium



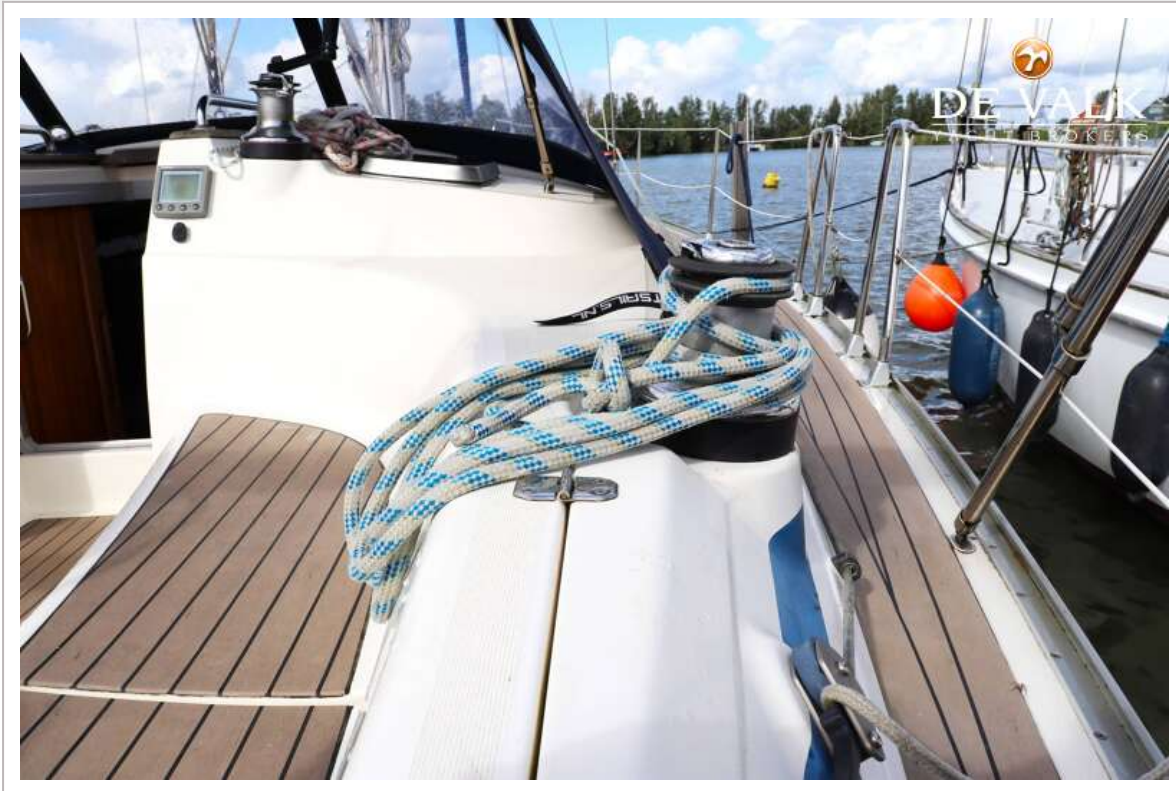
BAVARIA 40



BAVARIA 40



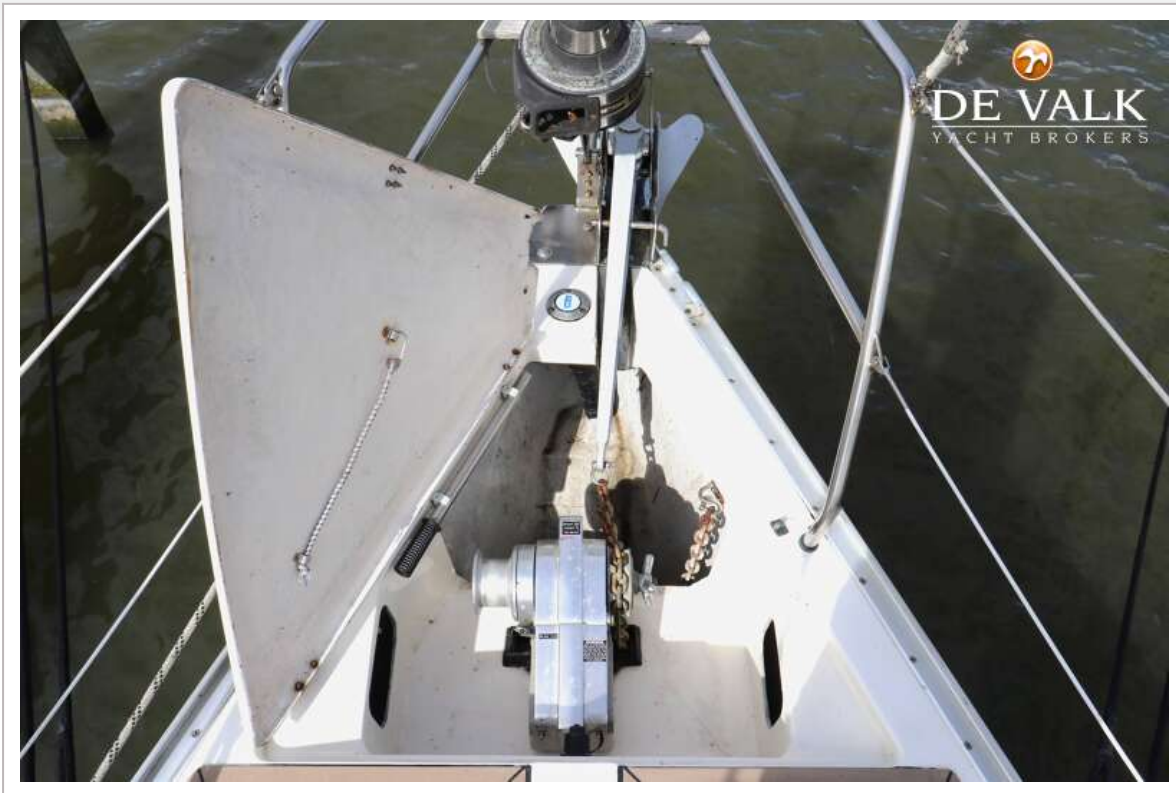
BAVARIA 40



BAVARIA 40



BAVARIA 40



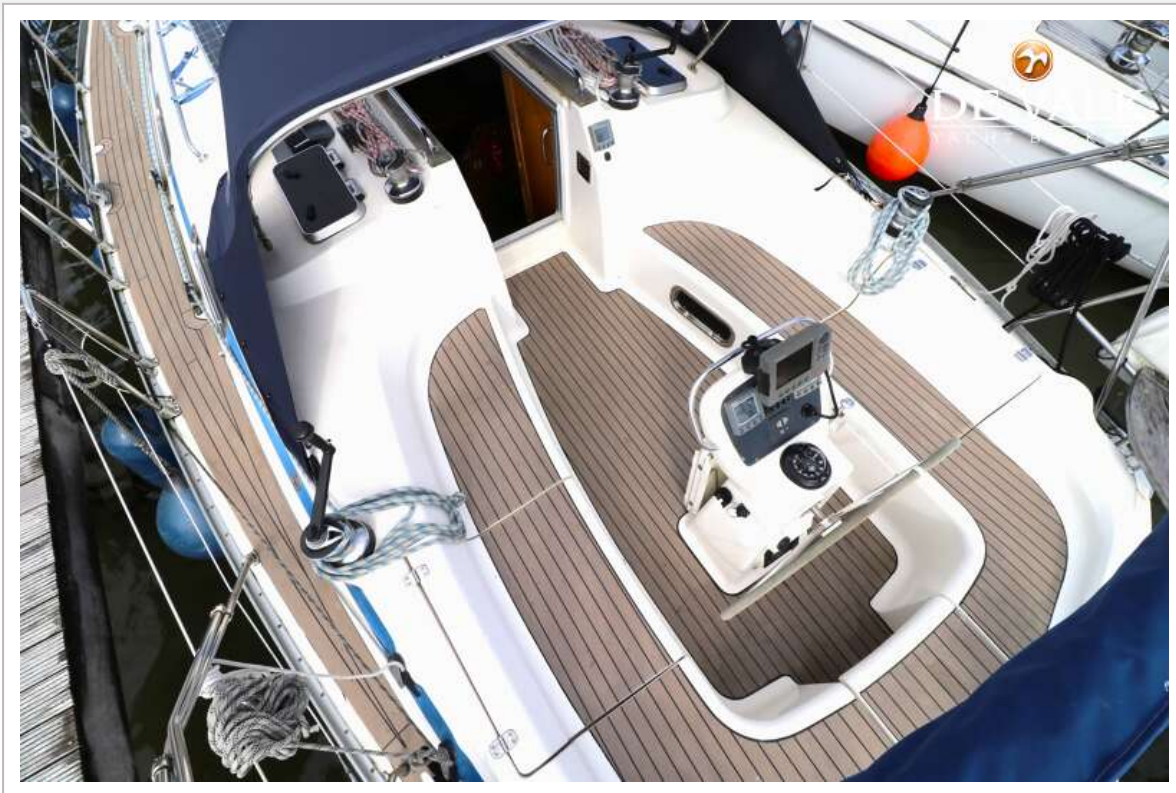
BAVARIA 40



BAVARIA 40



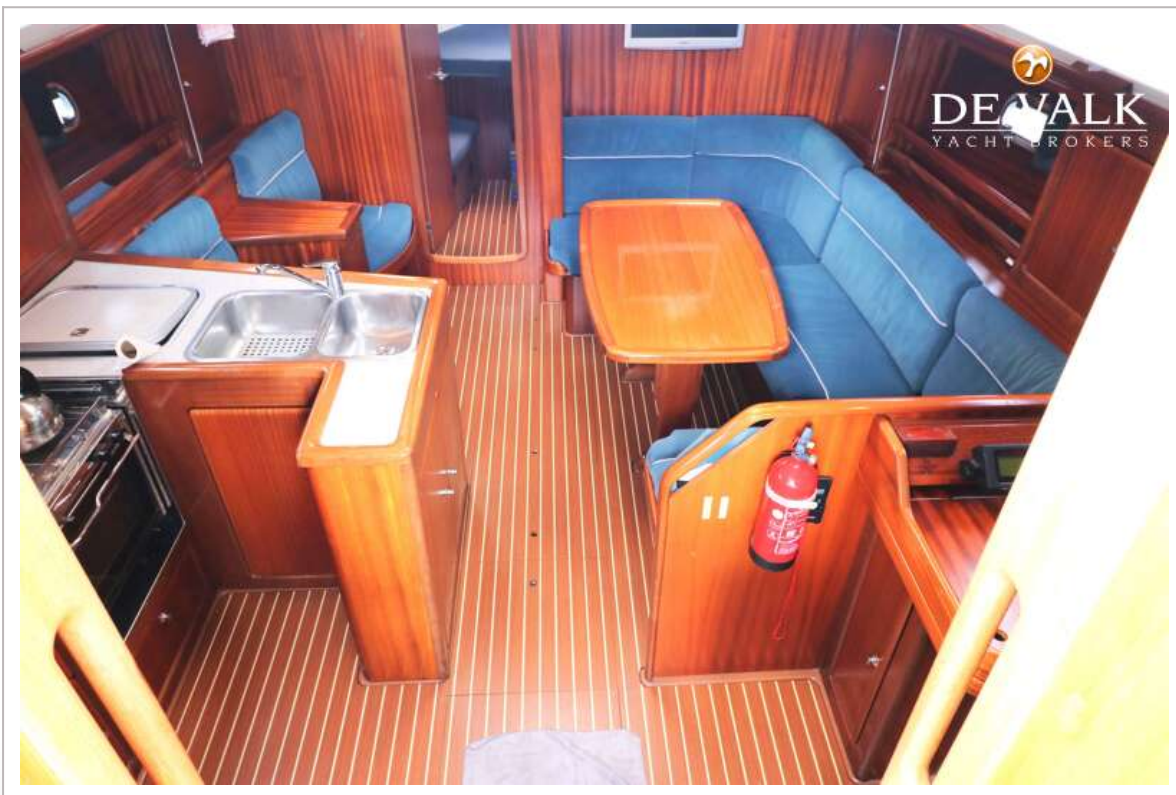
BAVARIA 40



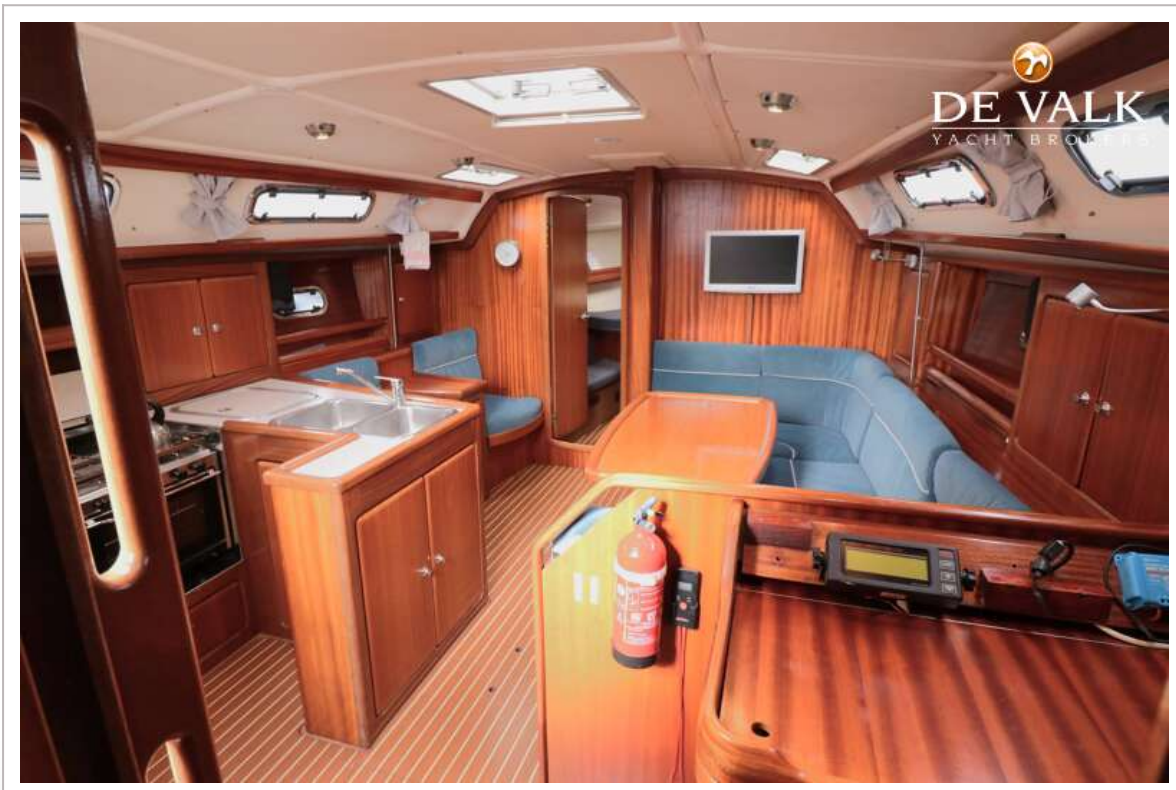
BAVARIA 40



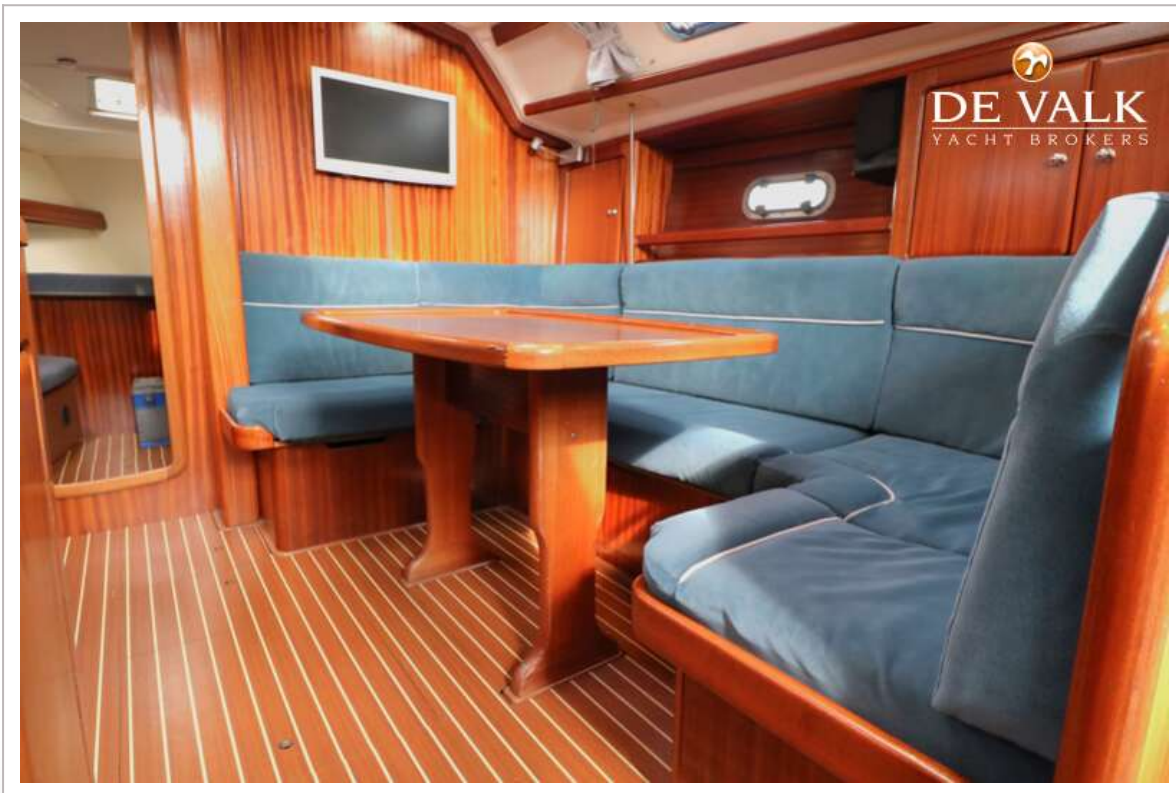
BAVARIA 40



BAVARIA 40



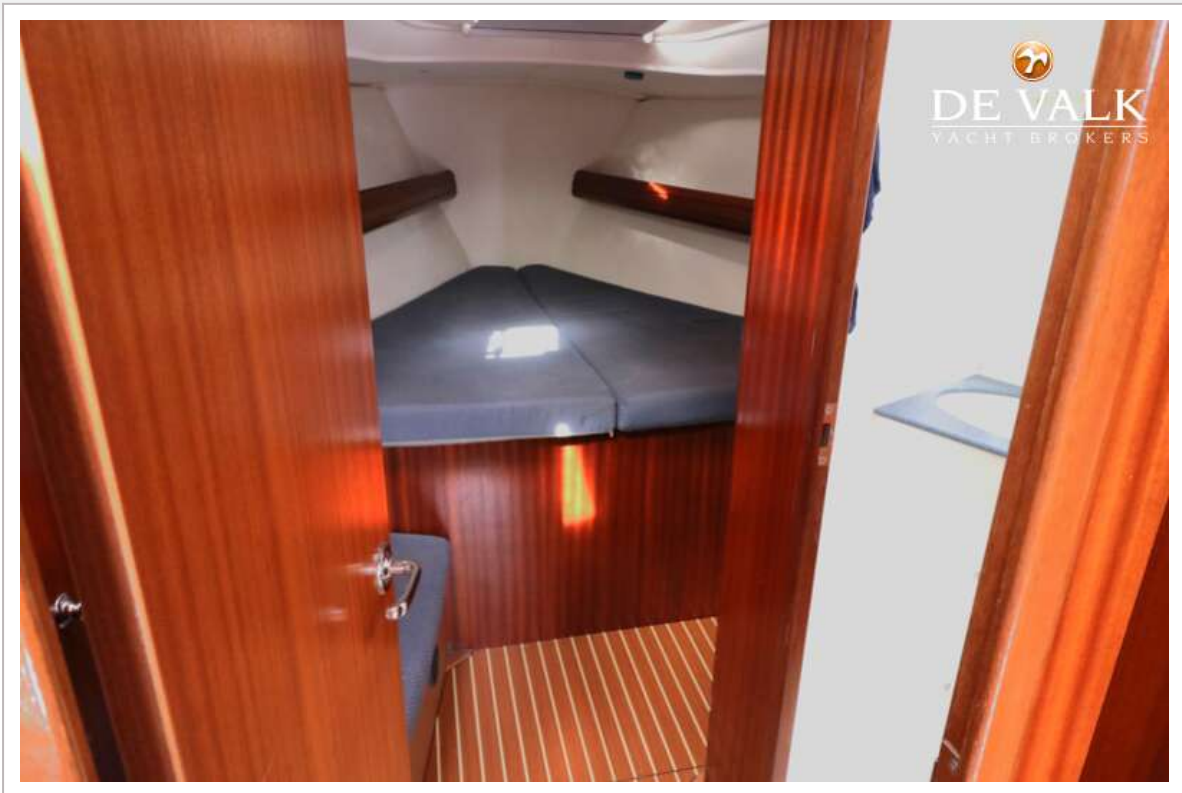
BAVARIA 40



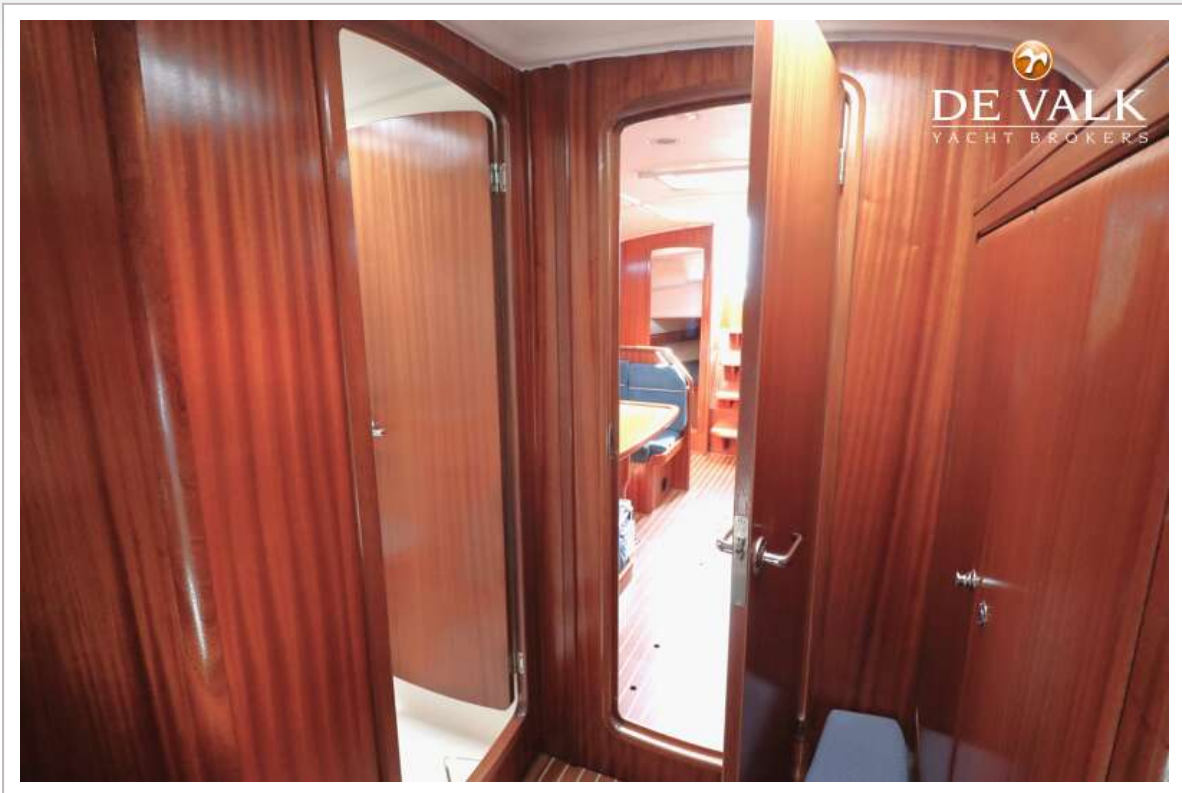
BAVARIA 40



BAVARIA 40



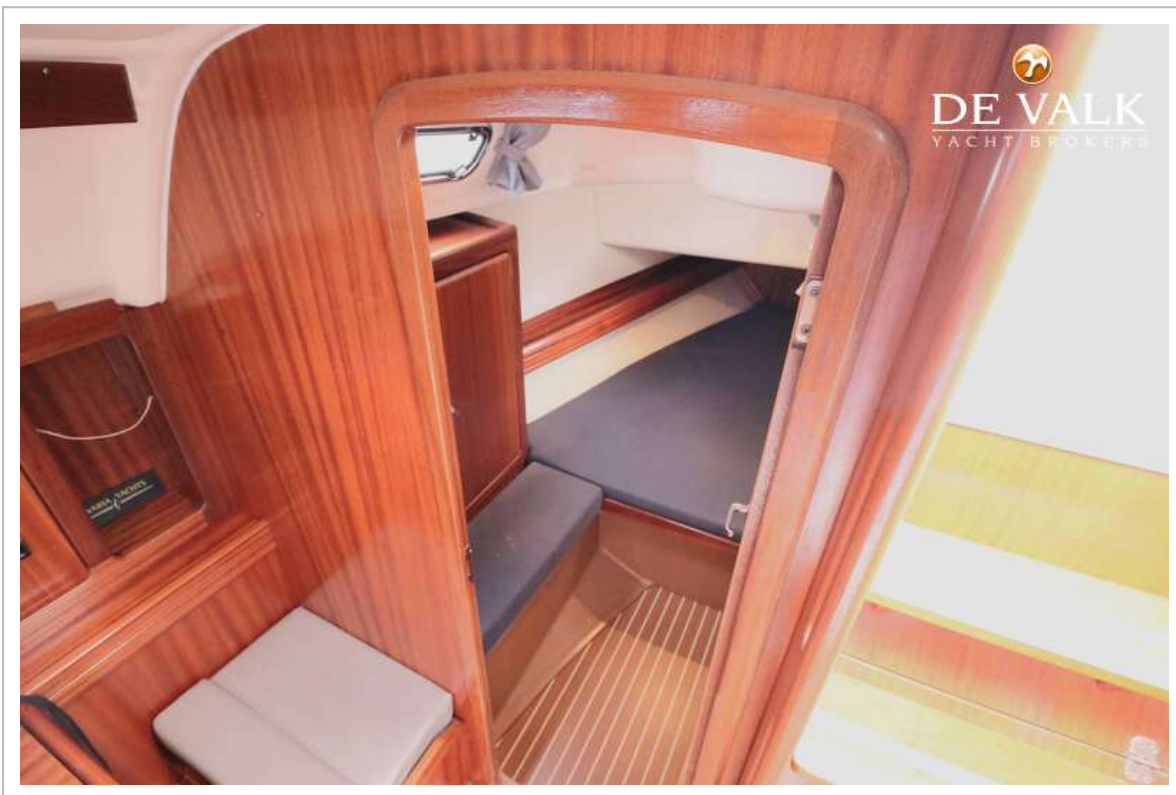
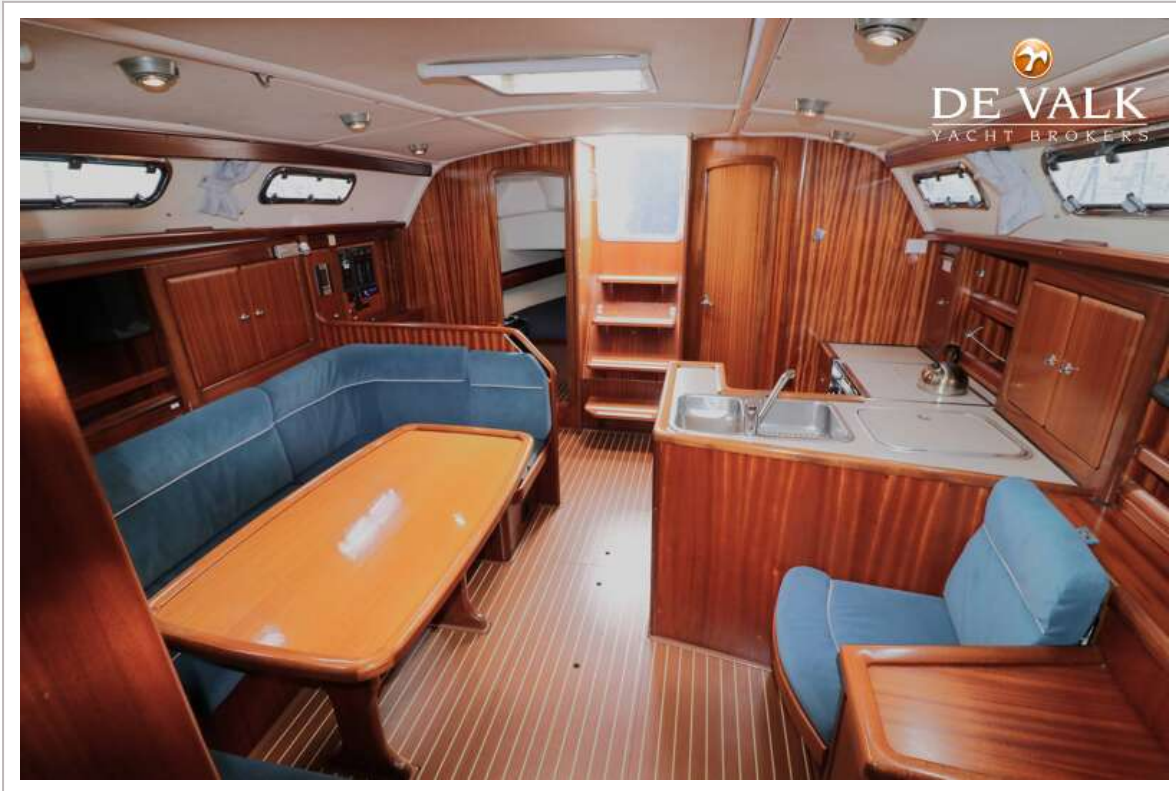
BAVARIA 40



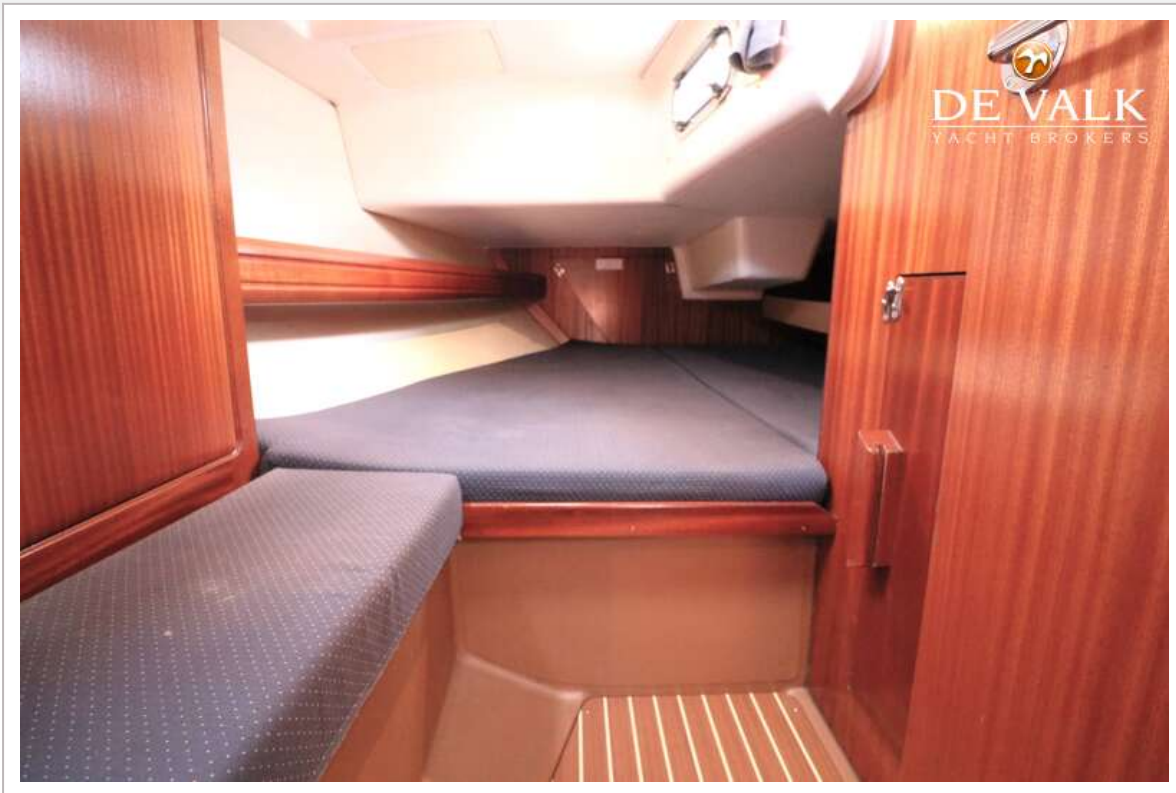
BAVARIA 40



BAVARIA 40



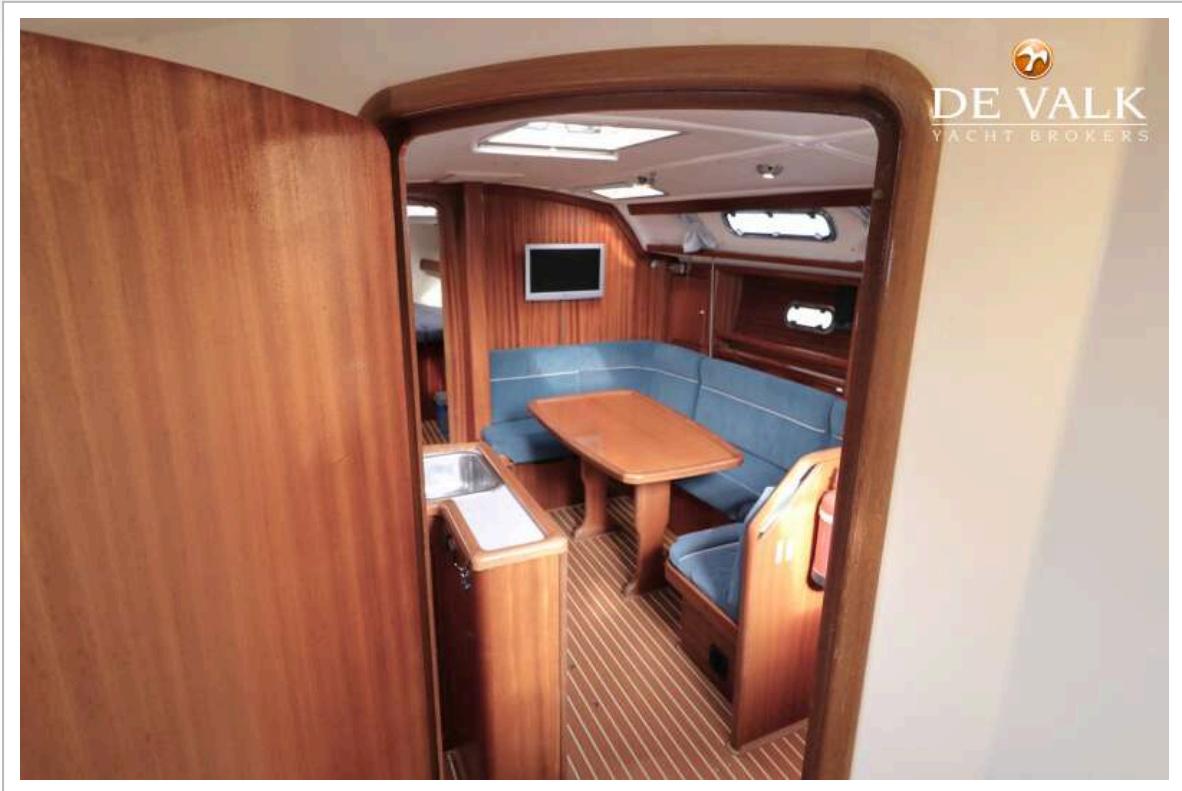
BAVARIA 40



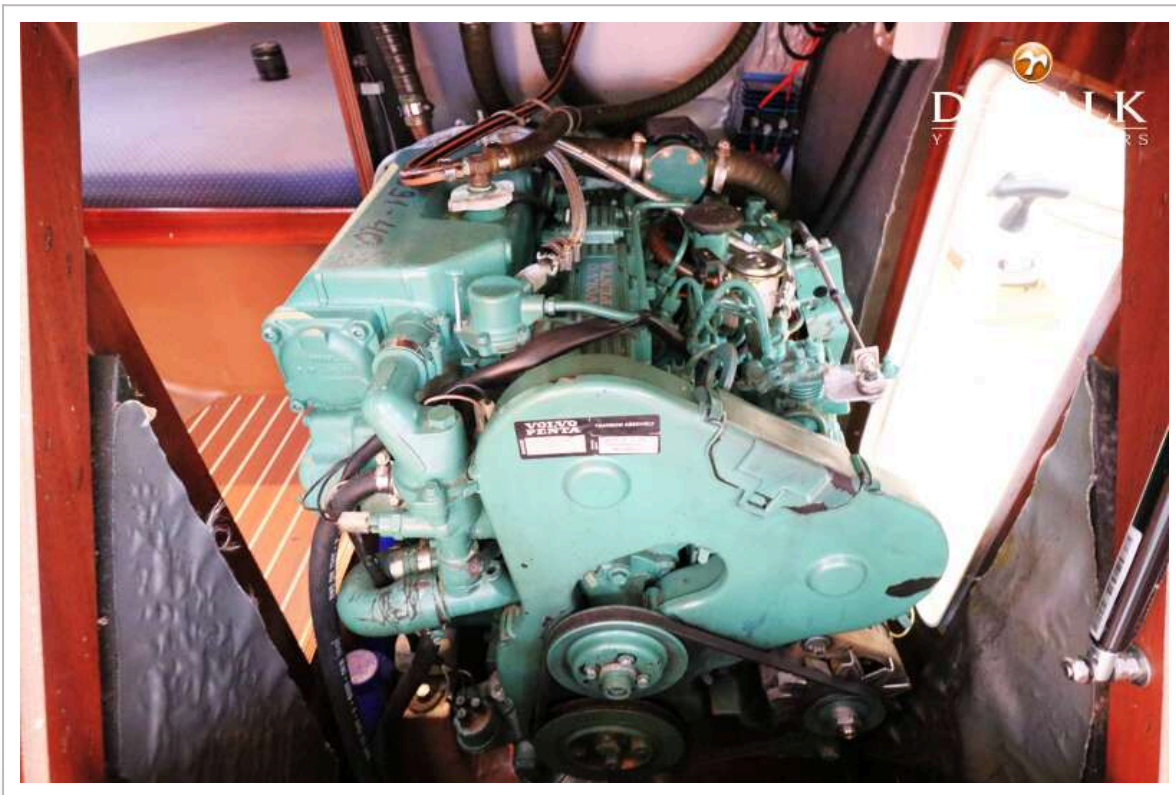
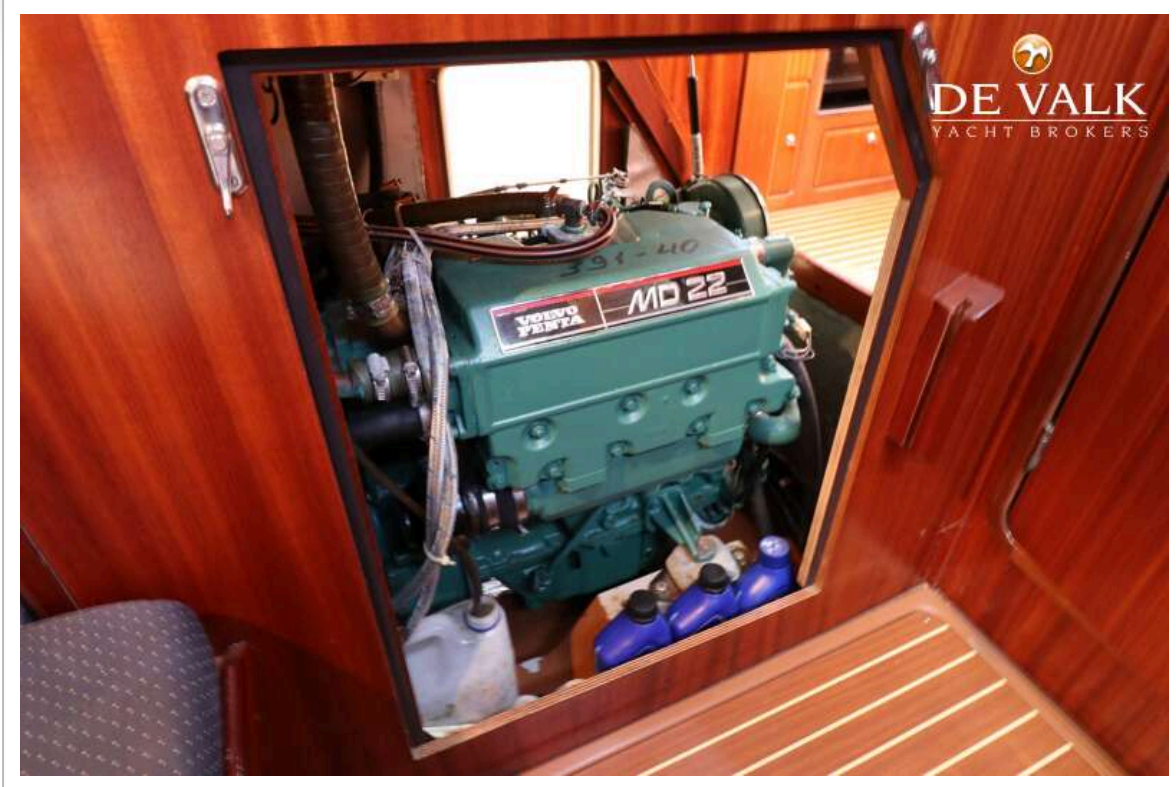
BAVARIA 40



BAVARIA 40



BAVARIA 40



BAVARIA 40

