



DE VALK
YACHT BROKERS



DANSAIL 45



DE VALK
YACHT BROKERS

DANSAIL 45

BROKER'S COMMENTS

The Dansail 45 is an aluminum sailing yacht of 2004 build to the highest standards. She is a fast sailing boat and a real „go anywhere“ ready to circumnavigate or look for icebears. She is complete with a Yanmar 55HP diesel engine, heating and a bow thruster. In 2016 the current owner invested a lot in 'Thara'. During this renovation she has got new windows, led lighting, antifouling, self tacking jib installation, backstay adjuster, bow thruster, radar, AIS, batteries, the shaft seal is replaced and many more. All that has been renewed you can find in the brochure.

Reinier van der Wolf

SPECIFICATIONS

Dimensions	13.70 x 4.35 x 2.20 (m)	Builder	Svendborg Yachtservice
Built	2003	Cabins	3
Material	Aluminium	Berths	6
Engine(s)	1 x Yanmar 4JH3E diesel	Hp/Kw	55.00 (hp), 40.42 (kw)
Asking price	sold (VAT)	Lying	elsewhere / Not at sales office

CONTACT

Sales office	De Valk Monnickendam	Telephone	+31 299 65 63 50
Address	Hoogedijk 6 1145 PM Katwoude The Netherlands	E-mail	monnickendam@devalk.nl

DISCLAIMER

These particulars are given in good faith as supplied but cannot be guaranteed.



GENERAL

Model	DANSAIL 45
Type	sailing yacht
LOA (m)	13,70
LWL (m)	13,25
Beam (m)	4,35
Draft (m)	2,20
Air draft (m)	23,00
Headroom (m)	2,00
Year built	2003
Launched	2004
Builder	Svendborg Yachtservice
Country	Denmark
Designer	CDE Danish Marine Design apS
Displacement (t)	10,7
Ballast (tonnes)	lead in aluminum
Hull material	aluminium
Hull colour	grey
Hull thickness (mm)	4
Hull shape	round-bilged
Keel type	fin keel
Superstructure material	aluminium
Superstructure (mm)	4
Deck plate thickness (mm)	4
Deck material	aluminium
Deck finish	non-skid paint
Superstructure deck finish	paint
Cockpit deck finish	paint
Antifouling (year)	2020
Window frame	aluminium
Window material	perspex 2016



Portholes	aluminium
Insulation	foam 6 cm.
Radar arch	non collapsible
Fuel tank (litre)	680
Level indicator (fuel tank)	yes
Freshwater tank (litre)	700
Level indicator (freshwater)	yes
Blackwater tank (litre)	80
Level indicator (blackwater)	yes
Blackwater tank extraction	yes
Wheel steering	cable steering 2x Jefa
Emergency tiller	seperate emergency rudder
More info on hull	In 2019 the hull and hull below the waterline has been sandblasted and provided with a complete new paint system. On deck there are few superficial corrosion points. These can be eliminated without much effort.
Extra info	dieseltanks and fuel injector have been cleaned (2016).

ACCOMMODATION

Cabins	3
Berths	6
Interior	mahogany
Floor	anti-slip
Deck saloon	yes
Saloon	Upholsty Alkantara beige
Headroom saloon (m)	between 1.95 and 2.3 M.
Heating	diesel ducted hot air
Chart table	yes
Aft Cabin	yes
Convertible berth	yes
Galley	yes
Countertop	plastic



DANSAIL 45

Sink	stainless steel
Cooker	calor gas 2-burner
Oven	yes
Microwave/oven combi	yes
Fridge	Cooling box
Freezer	yes
Hot water system	220V + engine
Water pressure system	electrical Pump (2016)
Kettle	yes
Coffee maker	Jura (2018)
Crockery	yes
Owners cabin	double bed
Bed length (m)	2,00
Wardrobe	hanging/drawers/shelves
Bathroom	shared
Toilet	shared
Toilet system	yes
Wash basin	in the bathroom
Shower	shared
Guest cabin 1	double bed
Bed length (m)	2,00
Wardrobe	hanging and shelves
Bathroom	shared
Toilet	shared
Toilet system	yes
Wash basin	in the bathroom
Shower	shared
Extra info	Large cockpit locker on starboard, can possibly be used as second aft cabin, accessible from the cockpit. In 2016 Replacement of the entire interior lighting to LED.

MACHINERY



DANSAIL 45

No of engines	1
Make	Yanmar
Type	4JH3E
HP	55
kW	40.42
Fuel	diesel
Year installed	2004
Maximum speed (kn)	9
Cruising speed (kn)	7
Consumption (l/hr)	4
Engine hours	2400
Engine cooling system	freshwater heat exchanger
Drive	shaft
Shaft seal	2016
Engine controls	mechanical
Gearbox	mechanical
Bowthruster	electric Sidepower retract (2016)
Gearbox	mechanical
Exhaust	watercooled
Propeller type	feathering Gori
Propeller blades	3
Propeller shaft material	stainless steel
Shaft lubrication	water
Manual bilge pump	yes
Electric bilge pump	yes
Generator	wet exhaust 3 kW
Batteries	yes
Start battery	1x AGM 48Ah (2016) 3x AGM 220Ah (2022)
Service battery	yes
Bowthruster battery	2x 80Ah (2016)
Battery monitor	yes
Battery charger	+ B2B charger for bow thruster Victron Combi Plus



Inverter	Victron Combi Plus
Battery charger/inverter	Victron Combi Plus
Wind generator	Masterwind
Shorepower	with cable
Extra info	In 2016: engine maintenance for Yanmar and Honda.
Extra info	Victron Insulation transformer

NAVIGATION

Compass	yes
Electric compass	NKE
Depth sounder	NKE
Log	NKE
Windset	NKE
VHF	yes
VHF handheld	yes
Autopilot	NKE
Rudder angle indicator	NKE
Radar	New in 2016 interlaced with plotters Raymarine
GPS	Furuno
Plotter	Raymarine
Navtex	Mohrer Wetterbox
Electronic chart(s)	Navionics
AIS receiver	yes
AIS transponder	With own combination antenna (2016)
Radio receiver	yes
Transmitter	yes
EPIRB	yes
Personal MOB transmitter	NKE



Extra info

In 2016: Partial renewal of the NKE multifunctional displays in the cockpit. Renewal of the radar and conversion to digital radar, working with the plotter and radar overlay. NKE board electronics with multifunctional displays, (partly renewed in 2016), electromagnetic log and gyropilot-AP Iridium Go with antenna

EQUIPMENT

Sprayhood with grab rail	2014
Cockpit cover	yes
Dodger	yes
Bimini	with Sunfilterscreens
Cockpit cushions	yes
Cockpit table	yes
Bathing platform	yes
Boarding ladder	stainless steel
Transom door	yes
Bow ladder	yes
Deck shower	yes
Anchor	Delta 25 kg.
Anchor chain	80 m. 8 mm.
Anchor 2	Delta 20 kg.
Other ground tackle	1x rear anchor (aluminum plate anchor with lead chain) + Cobra anchor 15 kg.
Windlass	electrical Lewmar remote controllable from the cockpit
Dinghy	rigid hull 2,9m Hypalon m. Jockeysitz und Steuerung (2016)
Outboard	Honda 8 HP with E-Start and remote control
Davits	stainless steel
Davits controls	manual
Deck crane	manual
Sea railing	yes
Grab rail (superstructure)	stainless steel
Pushpit	S/S



Pulpit	S/S
Life raft	container
Life raft (pers)	6
Last life raft survey	2016
Lifejackets	yes
Lifebuoy	yes
Danbuoy	yes
Safety lines on deck	yes
Horn	electric
Radar reflector	yes
Fenders	yes
Mooring lines	yes
Spare parts	yes
TV	24 inch Flatscreen
TV receiver	yes
Satellite	EI. Tracking SAT TV antenna
Radio-cd player	2x (2016)
DVD player	yes
Speakers in salon	yes
Speakers in cabin	yes
Clock - barometer	yes
Fire extinguisher	yes
Extra info	100m rope 12mm, on new role Liros GripProtect 10mm new on roll In 2016 Installation of the retractable flat-screen TV and the satellite antenna. Installation of the caravan weatherbox, connection to backstay. Replacement and renewal of the superstructure glazing in 8mm. Partial re-control of the traps in Liros D-Pro 10mm. Preparation of the emergency riser insert and emergency rifle.
Extra info	NKE MOB-System MOB Motor Stop

RIGGING

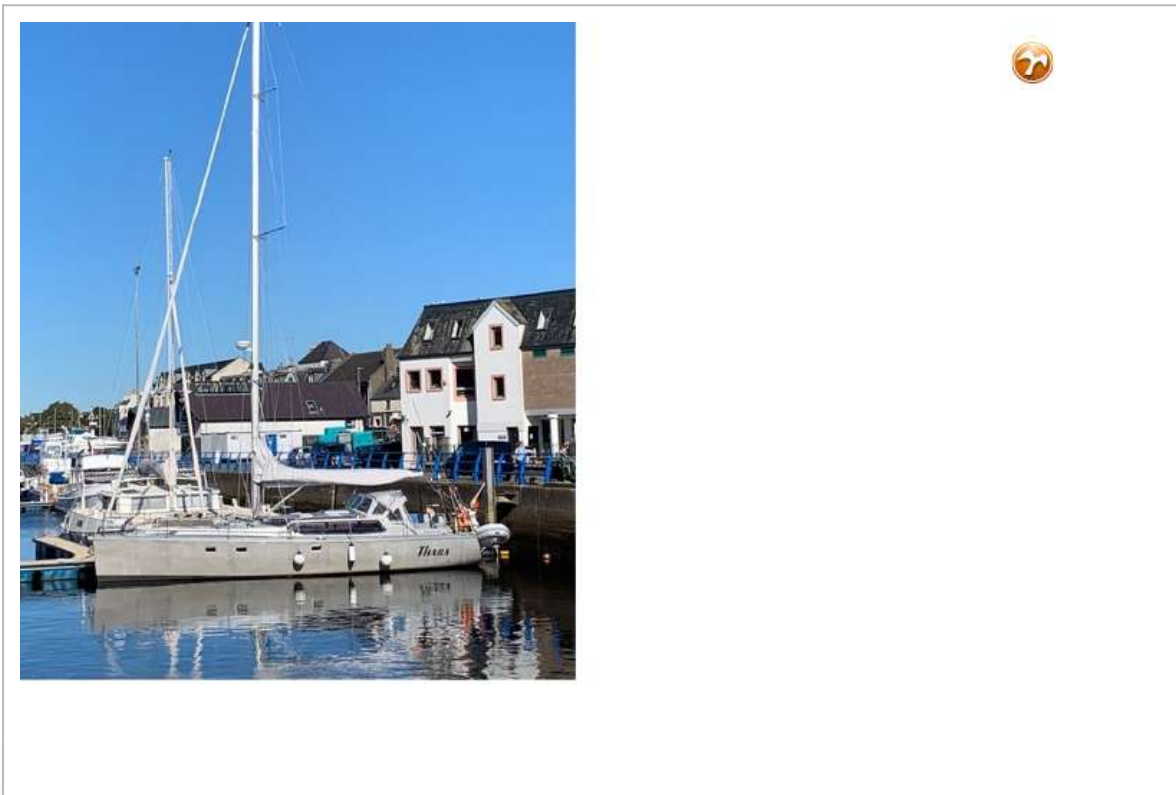
Rigging	fractional with backstays Kutterstag wegnehmbar
----------------	---



Standing rigging	Rod Check 2016
Brand mast	yes
Material mast	aluminium
Mainsail	Hydranet Radial (2018)
Mainsail cover	yes
Battcars	Ronstan (2016)
Fully battened mainsail	yes
Jib	Hydranet radial (2018)
Genoa furler	Harken
Gennaker	147qm (2004) Quantum, Top down
Removable innerforestay	yes
Stormjib	(2004) Quantum Dacron
Self tacking jib installation	Harken
Reefing System	3-reefs, Quick line reefing
Backstay adjuster	hydraulic Lewmar (2016)
Boomvang	mechanical and tackle
Primary sheet winch	2x Andersen 58ST
Secondary sheet winch	2x Andersen 45ST, one electric
Winchcovers	yes
Spi-pole	aluminium
Isolated backstay	yes
Extra info	In 2016 Self tacking jib installation mounted. Installation of self-reversing jib rail etc. Conversion of the working jib to the S-jib. Renewal of the screw shaft and stuffing box.



DANSAIL 45



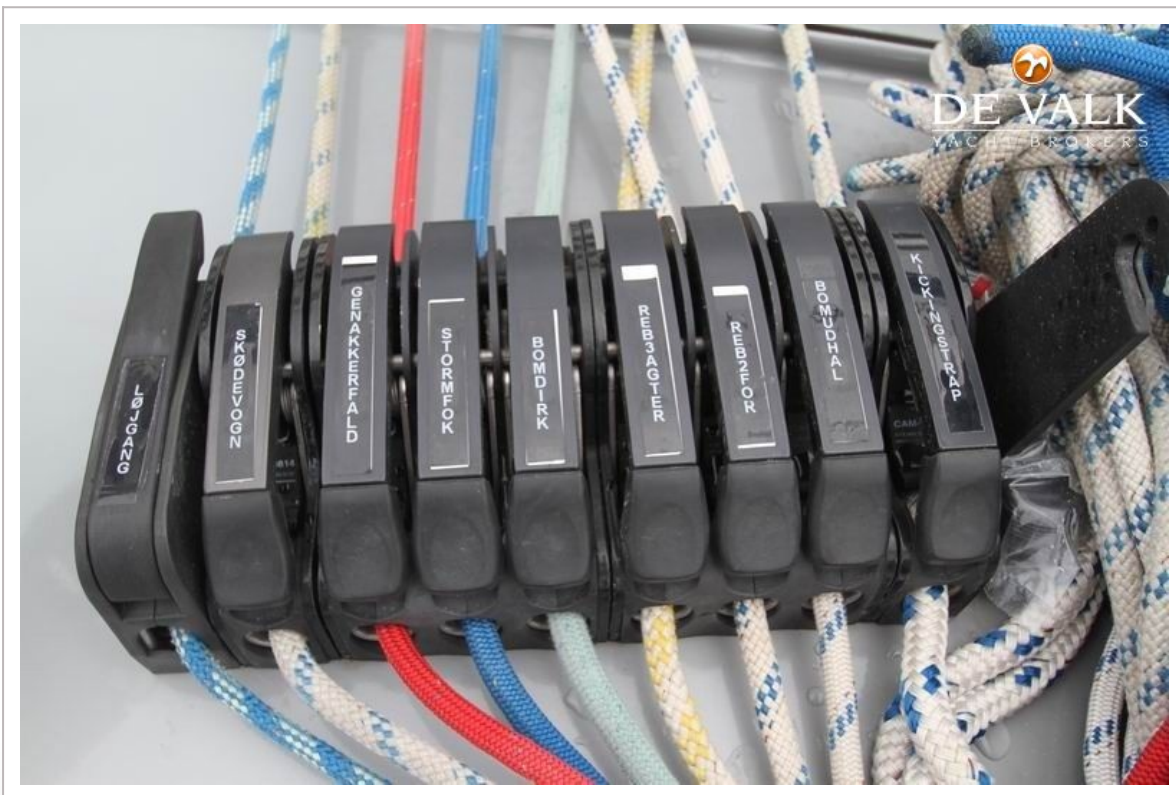
DANSAIL 45



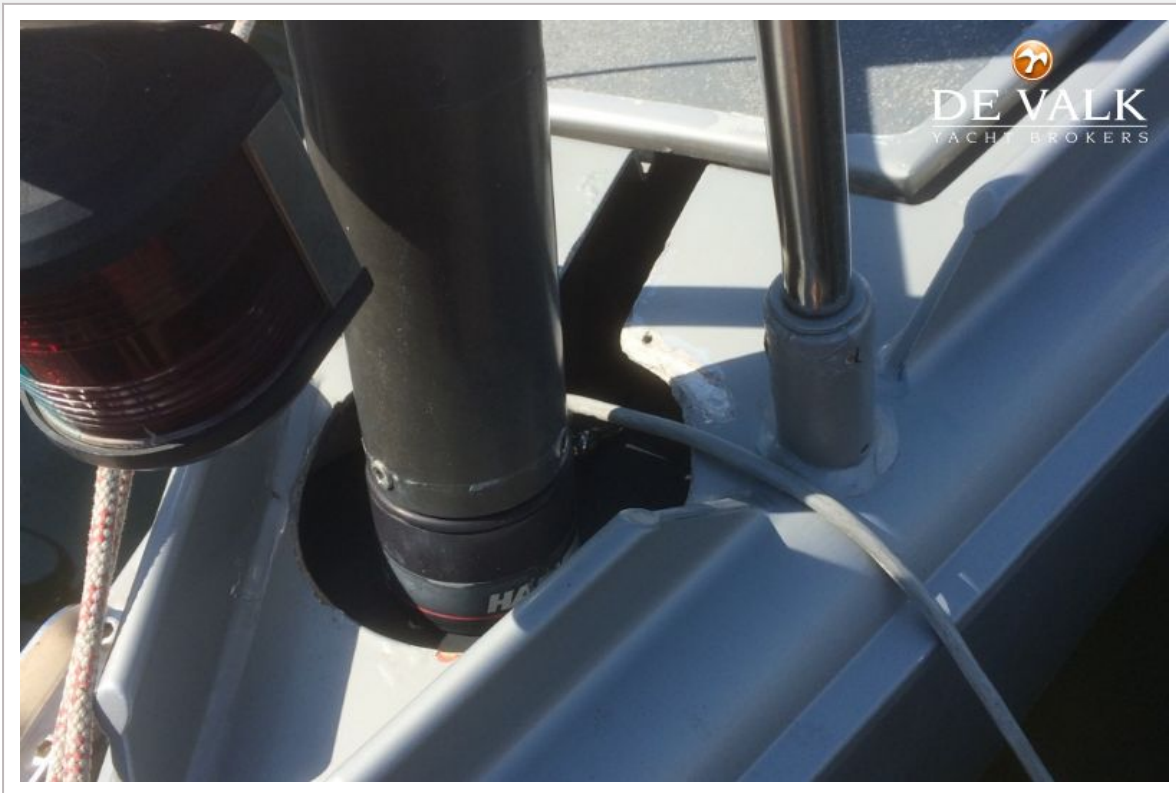
DANSAIL 45







DANSAIL 45



DANSAIL 45



DANSAIL 45



DANSAIL 45



DANSAIL 45



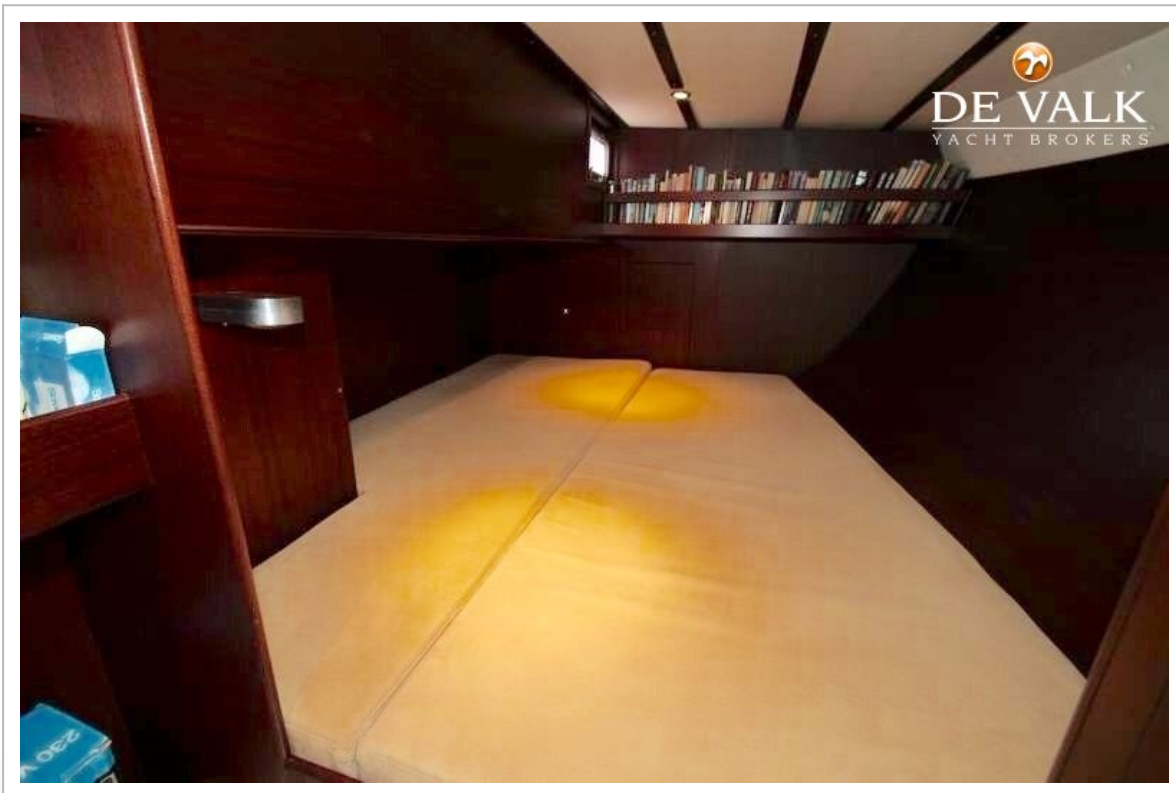
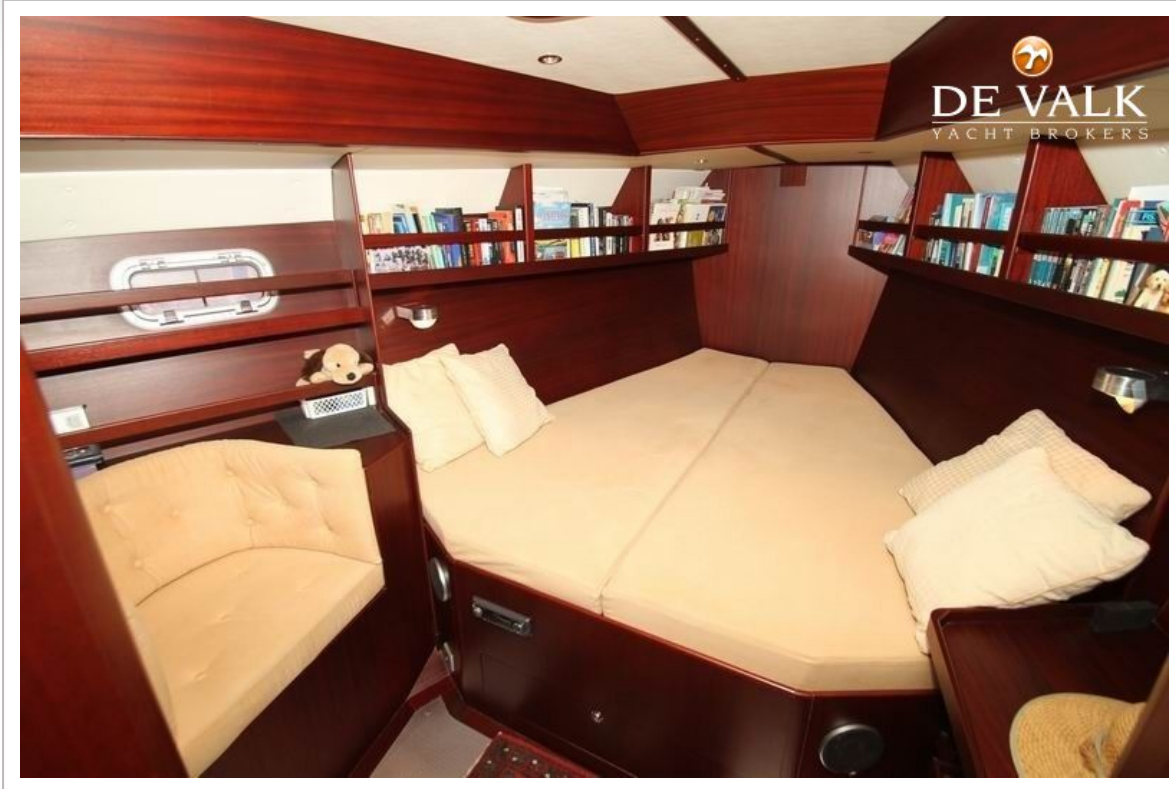
DANSAIL 45



DANSAIL 45



DANSAIL 45



DANSAIL 45



DANSAIL 45

