



DE VALK
YACHT BROKERS



KOOPMANS 40



DE VALK
YACHT BROKERS

BROKER'S COMMENTS

Sander van der Voorn

SPECIFICATIONS

Dimensions	12.10 x 3.60 x 1.60 (m)	Builder	van Rijnsoever - Beesd
Built	1996	Cabins	1
Material	Steel	Berths	6
Engine(s)	1 x Yanmar 4JH2E diesel	Hp/Kw	50.00 (hp), 36.75 (kw)
Asking price	sold (VAT)	Lying	at sales office

CONTACT

Sales office	De Valk Monnickendam	Telephone	+31 299 65 63 50
Address	Hoogedijk 6 1145 PM Katwoude The Netherlands	E-mail	monnickendam@devalk.nl

DISCLAIMER

These particulars are given in good faith as supplied but cannot be guaranteed.



GENERAL

Model	KOOPMANS 40
Type	sailing yacht
LOA (m)	12,10
LWL (m)	10,10
Beam (m)	3,60
Draft (m)	1,60
Air draft (m)	20,00
Headroom (m)	2,00
Year built	1996
Builder	Van Rijnsoever - Beesd
Country	The Netherlands
Designer	Koopmans
Displacement (t)	16
Ballast (tonnes)	lead 6
Hull material	steel
Hull colour	white
Hull thickness (mm)	4
Hull shape	S-bilged V-shape
Keel type	long keel
Superstructure material	steel
Superstructure (mm)	3
Deck plate thickness (mm)	3
Rubbing strake	stainless steel
Deck material	steel
Deck finish	non-skid paint
Superstructure deck finish	paint
Cockpit deck finish	teak
Antifouling (year)	2018
Dorades	4 x (2018)
Window frame	aluminium



Window material	tempered glass
Deckhatch	4x
Portholes	23x
Insulation	foam plates
Radar arch	collapsible
Fuel tank (litre)	steel 550
Fuel tank 2 (litre)	steel 400
Level indicator (fuel tank)	yes
Freshwater tank (litre)	steel 300
Level indicator (freshwater)	yes
Blackwater tank (litre)	stainless steel 75
Blackwater tank extraction	deck extraction + uw line
Wheel steering	rack & pinion
Emergency tiller	yes
More info on hull	Awl Grip (2014)
Extra info	Hull and superstructure isolated
Extra info	Blackwater tank extraction also with pump

ACCOMMODATION

Cabins	1
Berths	6
Interior	mahogany
Saloon	yes
Headroom saloon (m)	2,00 M.
Heating	diesel ducted hot air Webasto
Heating 2	stove diesel Heatpol
Navigation center	yes
Chart table	yes
Dinette	yes
Sliding door to cockpit	yes
Galley	yes



Countertop	corian
Sink	stainless steel
Cooker	Electric 1 burner, gas 2 burner
Oven	Electric
Microwave	Moulinex
Fridge	Weaco 2012
Hot water system	220V + engine
Water pressure system	electrical
Manual and/or foot pump	yes
Owners cabin	v-bed
Bed length (m)	2,00 M.
Wardrobe	hanging/drawers/shelves
Bathroom	shared
Toilet	shared
Toilet system	vacuum Lavac
Wash basin	at the toilet
Shower	separate
Guest cabin 1	v-bed
Bed length (m)	2,00 M.
Wardrobe	shelves
Extra info	Heating hardly used, needs to be checked

MACHINERY

No of engines	1
Make	Yanmar
Type	4JH2E
HP	50,00
kW	36,75
Fuel	diesel
Year installed	1996
Maximum speed (kn)	7-8



Cruising speed (kn)	5-6
Consumption (l/hr)	2-3,5
Engine hours	6500
Engine cooling system	freshwater heat exchanger
Drive	shaft
Engine controls	bowden cable
Gearbox	mechanical
Exhaust	watercooled
Propeller type	fixed
Propeller blades	3
Propeller shaft material	stainless steel
Shaft lubrication	water Oil +
Electric bilge pump	yes
Bilge alarm	yes
Generator	wet exhaust Fischer Panda 4000 (2012)
Running hours generator	150
Batteries	yes
Start battery	1x 110Ah
Service battery	3x 220AH gel (2016
Battery monitor	Victron Energie
Battery charger	1 x Mastervolt 60Ah 1 x Victron 60Ah
Inverter	Mastervolt 1,500 watt
Diode battery combiners	yes
Shorepower	with cable
Insulation transformer	between generator and shore power Mastervolt Master Switch
Watermaker	needs service
Extra info	reserve 2 blade propeller
Extra info	Starter motor (2018)

NAVIGATION

Compass	Cassens & Plath
----------------	-----------------



Electric compass	Simrad
Depth sounder	B&G Triton (2014)
Log	B&G Triton (2014)
Windset	B&G Triton (2014)
Repeater	Simrad IS40
VHF	Sailor RT2048 ATIS
Autopilot	Simrad AP28 + AC42 computer
Wind vane steering install.	Monitor
Rudder angle indicator	Simrad
Radar/GPS/plotter	Simrad NSS8 & 3G Radar (2014)
Navtex	Furuno NX500
AIS receiver	Nasa Clipper
Transmitter	Icom 706
EPIRB	yes
Navigation lights	Partly led light
Searchlight	yes
Extra info	Autopilot with remote controle

EQUIPMENT

Fixed windscreen	yes
Sprayhood with grab rail	yes
Dodger	yes
Sun awning	yes
Cockpit cushions	yes
Cockpit table	yes
Boarding ladder	stainless steel
Deck shower	with hot water
Anchor	Bruce 30 kg
Anchor chain	70 M. and 35 M. Line
Anchor 2	CQR Plough 25 kg
Anchor chain	20 M. and 35 M. Line



Other ground tackle	Extra lines
Windlass	electrical Maxwell 1500
Capstan	yes
Outboard support	yes
Sea railing	stainless steel
Grab rail (superstructure)	stainless steel
Railing side opening gates	2x
Pushpit	yes
Pulpit	yes
Life raft	yes
Last life raft survey	2018
Lifebuoy	yes
Danbuoy	yes
Safety lines on deck	yes
Horn	air pressure
Radar reflector	yes
Fenders	yes
Mooring lines	yes
Spare parts	yes
TV	yes
TV receiver	without remote control Technics
Radio-cd player	1 pioneer 1 x Blaupunkt
DVD player	yes
Cockpit speakers	yes
Speakers in salon	yes
Speakers in cabin	yes
Clock - barometer	yes
Fire extinguisher	2x

RIGGING

Rigging	cutter
---------	--------



Standing rigging	wire Rod rigging &
Brand mast	Reckmann
Material mast	aluminium
Spreaders	2x
Stoway mast	4 battens
Cutterstay	yes
Cutter furler	yes
A-symmetric spi	70 m2
Staysail	yes
Staysail furler	yes
Yankee	yes
Reefing System	main in-mast furling
Backstay adjuster	hydraulic
Boomvang	mechanical and tackle
Primary sheet winch	2 x Andersen ST 46
Secondary sheet winch	2 x Andersen ST 40
Halyard winches	3 x Andersen ST 40
Spi-pole	aluminium
Isolated backstay	yes
Extra info	rigging Partly renewed 2010 and 2018



KOOPMANS 40



KOOPMANS 40

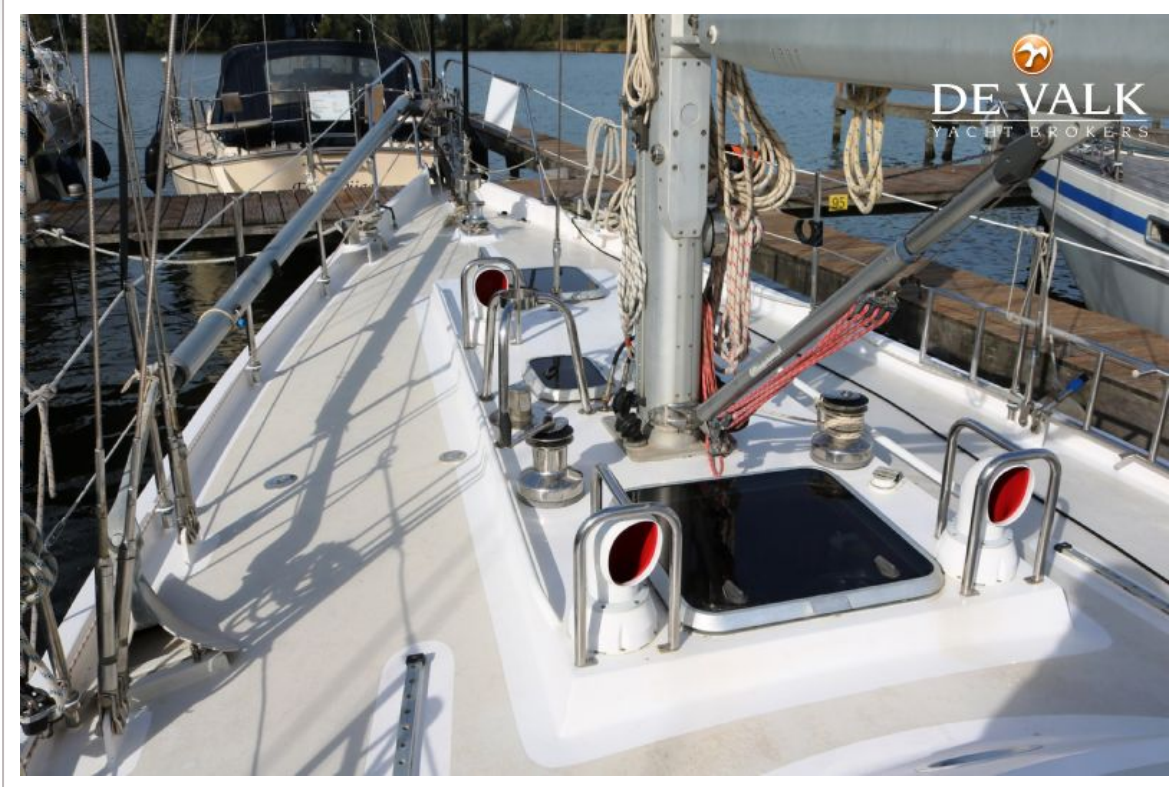








KOOPMANS 40

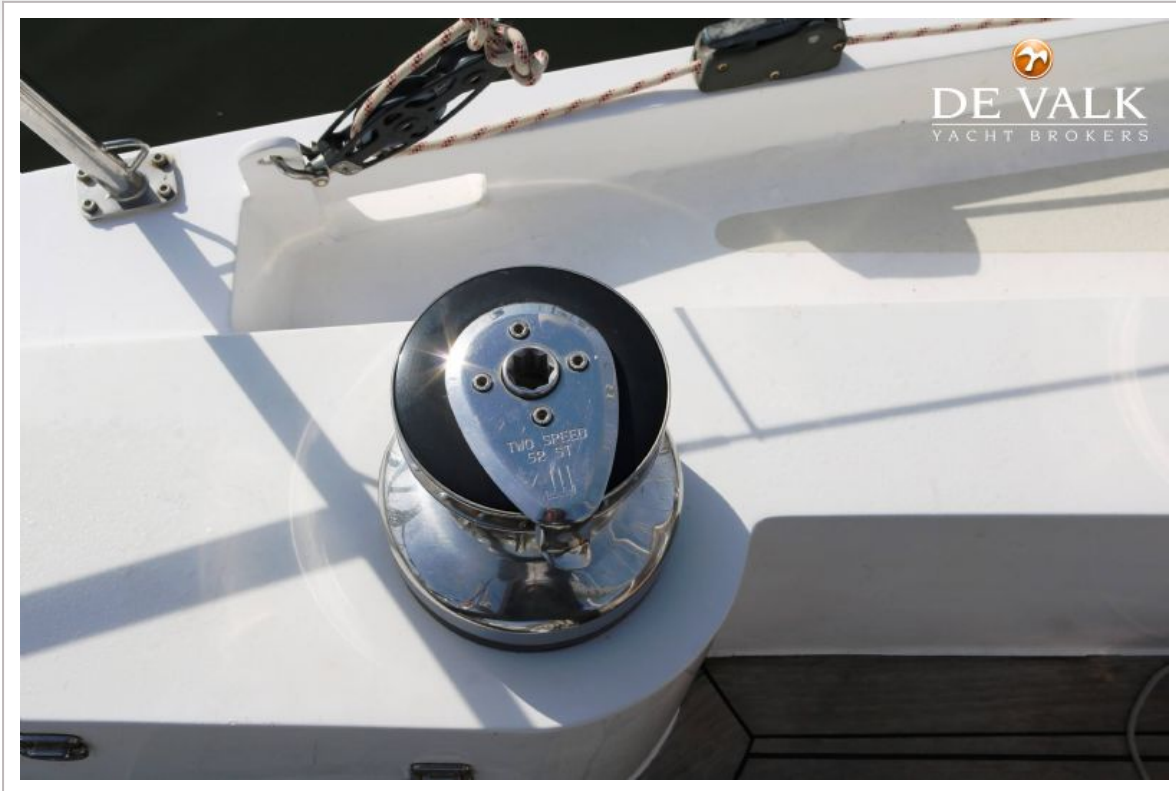


KOOPMANS 40



KOOPMANS 40





KOOPMANS 40



KOOPMANS 40



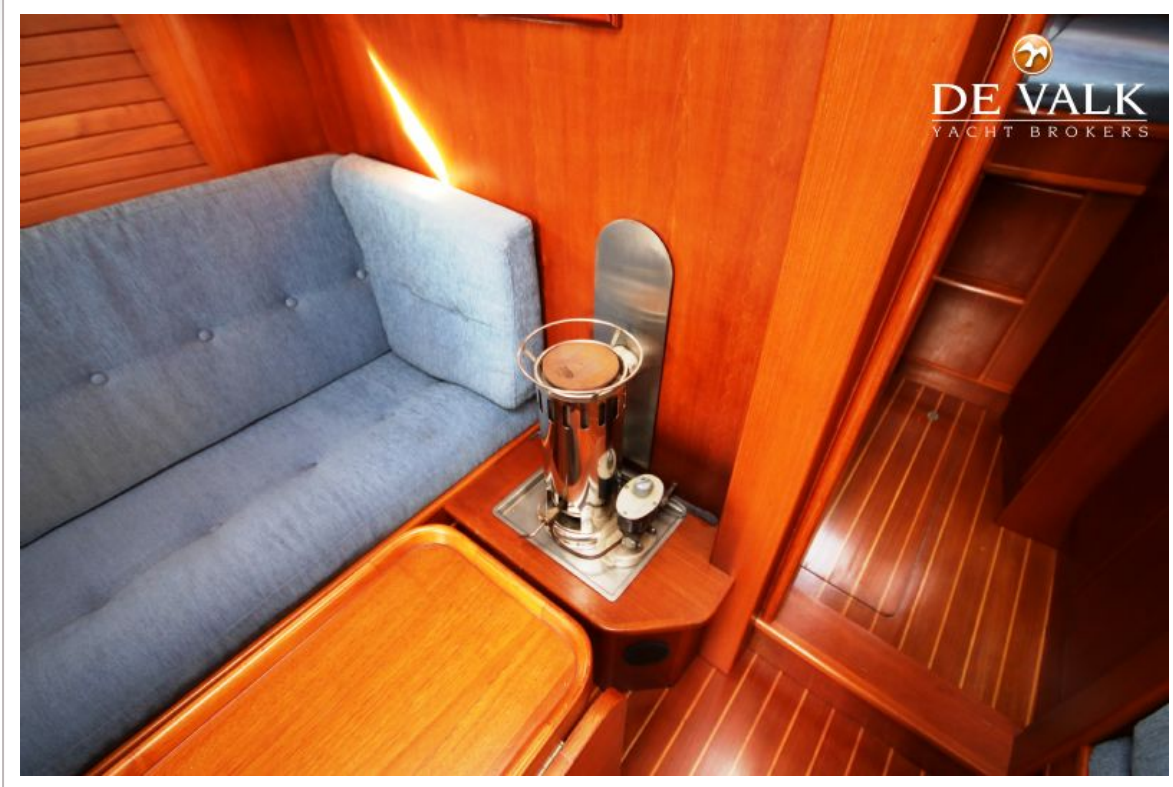
KOOPMANS 40



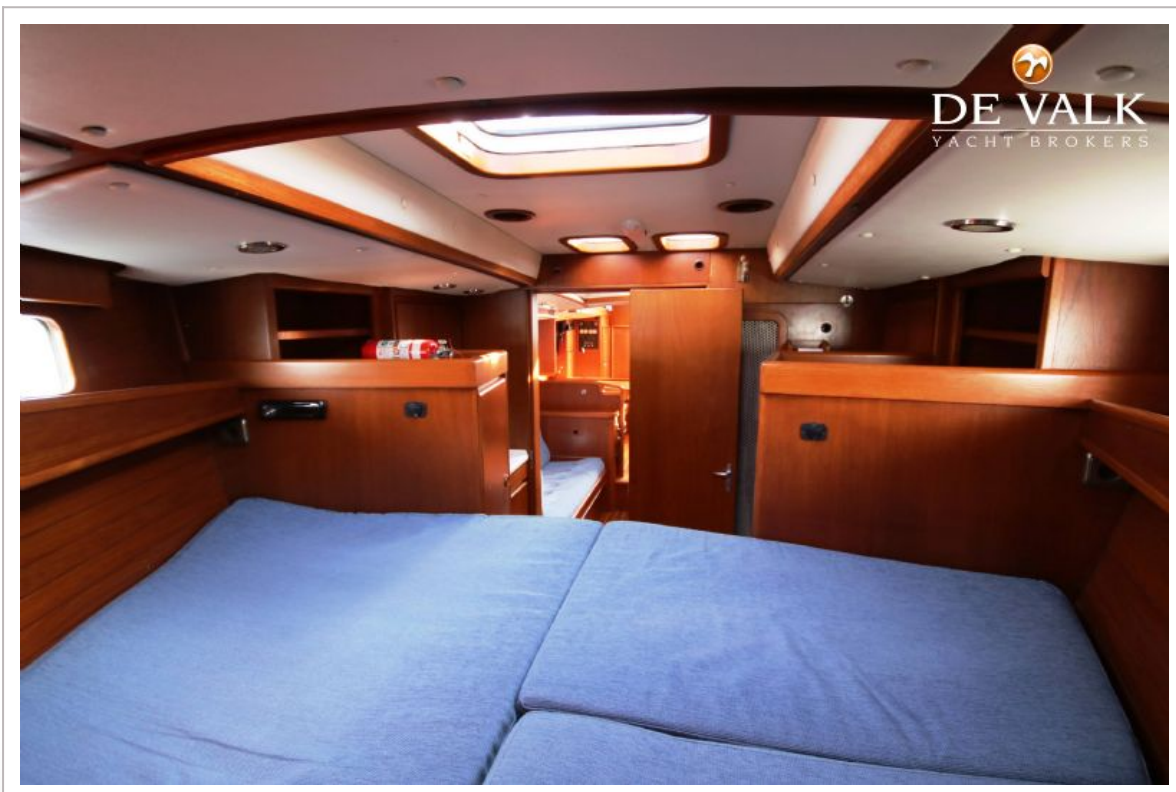
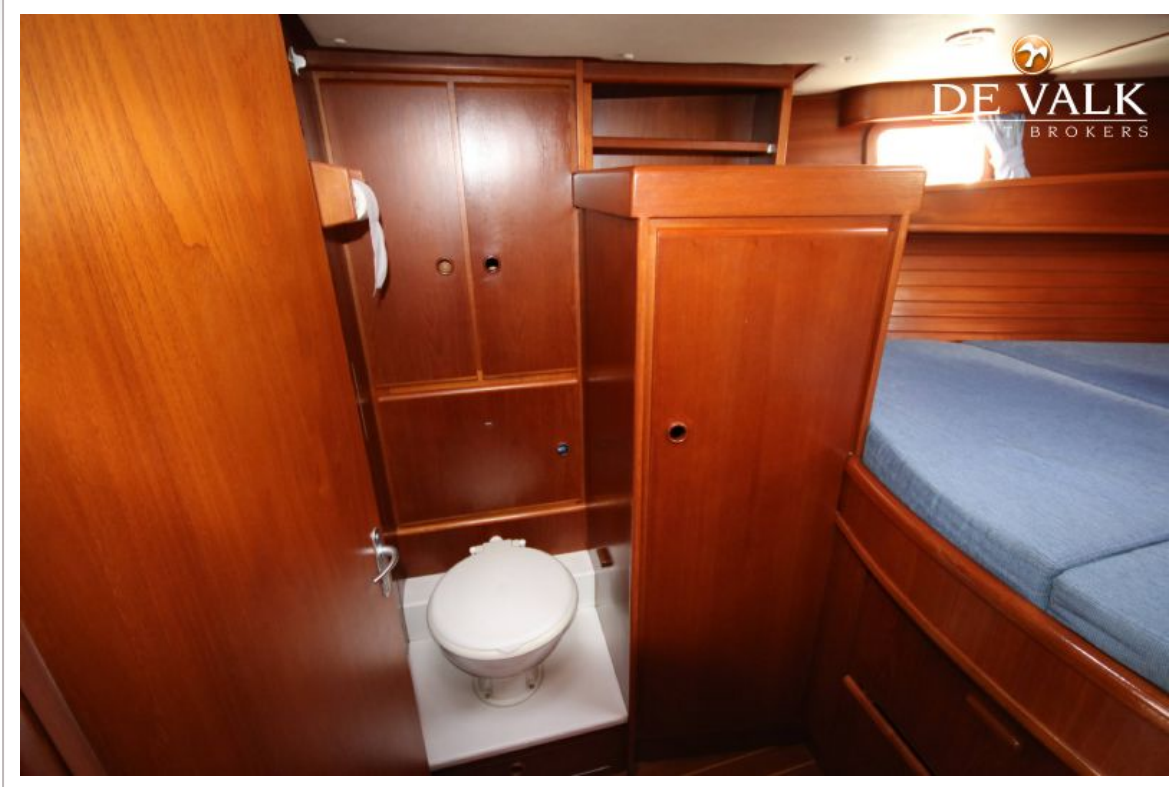
KOOPMANS 40



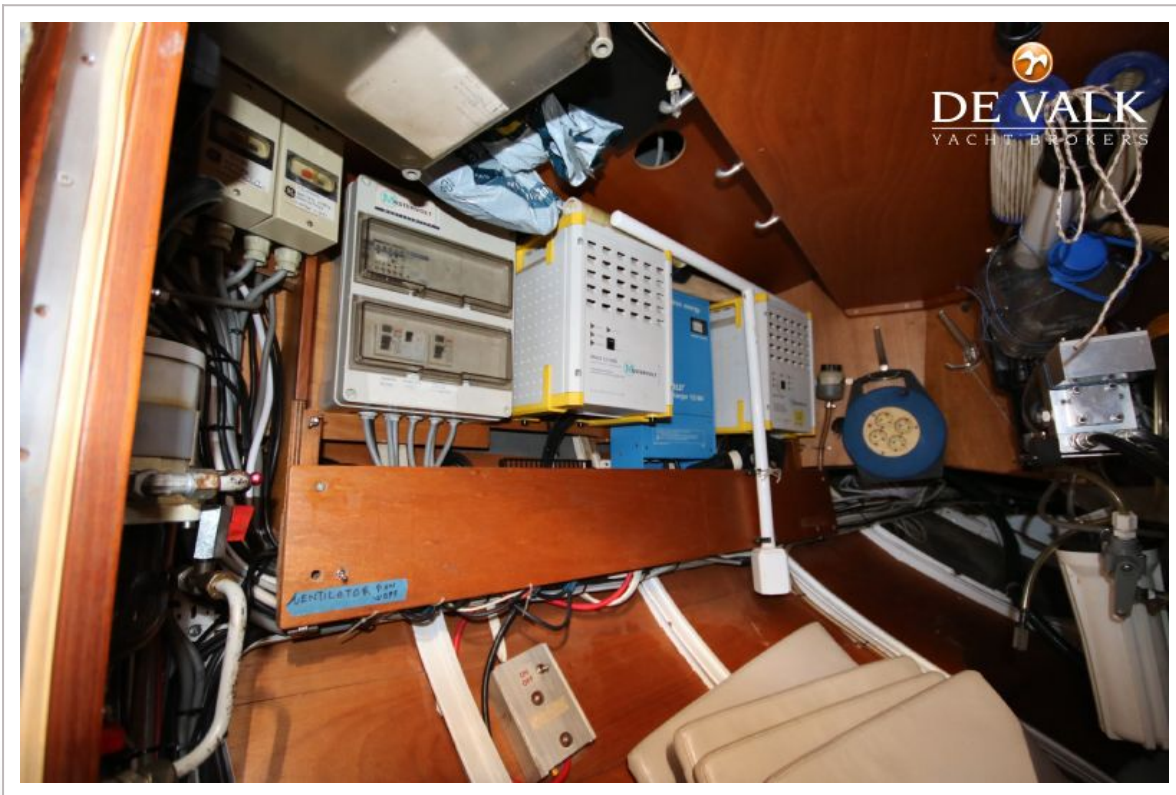
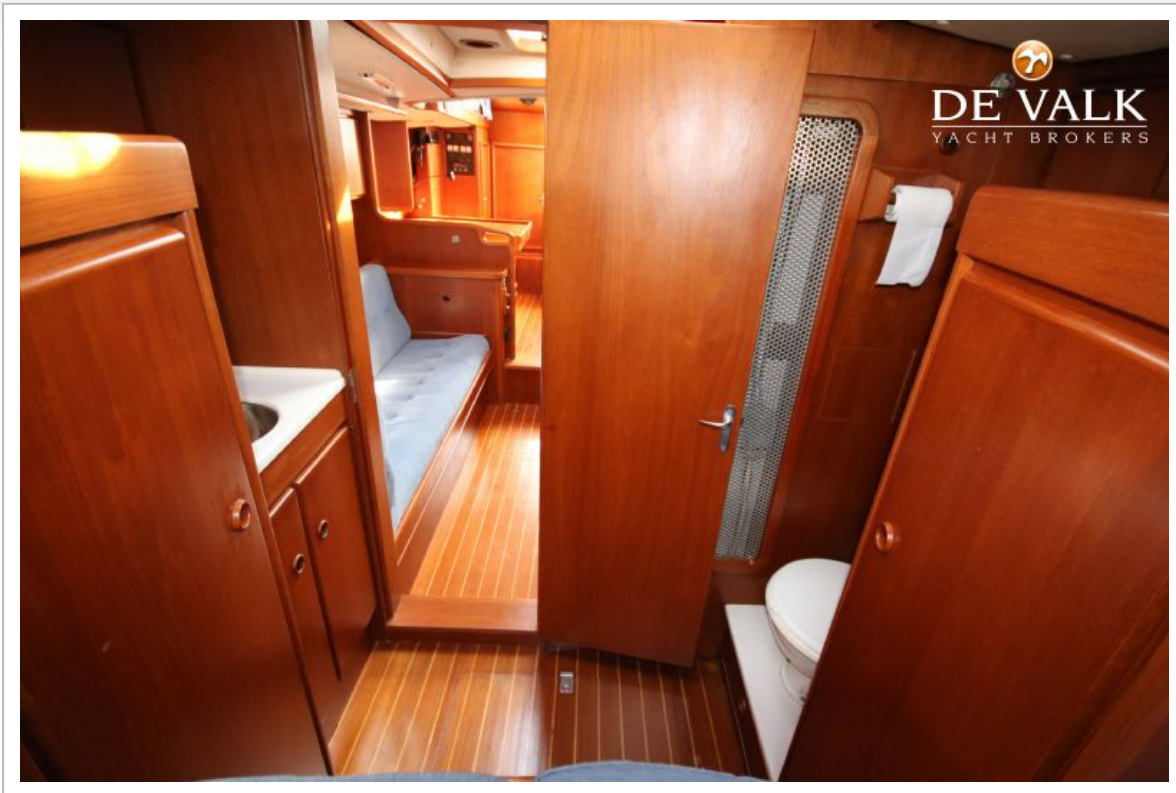
KOOPMANS 40



KOOPMANS 40



KOOPMANS 40





KOOPMANS 40

