



DE VALK  
YACHT BROKERS



## BAVARIA 55 CRUISER



DE VALK  
YACHT BROKERS

# BAVARIA 55 CRUISER

## BROKER'S COMMENTS

This Bavaria Cruiser 55 is selling by her first owner and ready to cruise with family or to race with friends. Clove Hitch is professionally maintained and fully equipped for Cat1 offshore racing to 2017 ISAF standards. Her spacious cockpit accommodates up to 10 people. The high freeboard ensures great vision for a seated helmsperson and the crew without blind spots. The salon impresses with a freestanding galley island, inviting settee and plenty of storage spaces. She is also outfitted with a generator, Air Conditioning system and an impressive list of navigational aids and safety equipment.

*Harald Padberg*

## SPECIFICATIONS

<b>Dimensions</b>	16.75 x 4.76 x 2.35 (m)	<b>Builder</b>	Bavaria Yachtbau GmbH, Giebelstad
<b>Built</b>	2009	<b>Cabins</b>	4
<b>Material</b>	GRP	<b>Berths</b>	8
<b>Engine(s)</b>	1 x Volvo Penta D3-110 diesel	<b>Hp/Kw</b>	110 (hp), 80.85 (kw)
<b>Asking price</b>	sold (VAT )	<b>Lying</b>	contact Monnickendam

## CONTACT

<b>Sales office</b>	De Valk Monnickendam	<b>Telephone</b>	+31 299 65 63 50
<b>Address</b>	Hoogedijk 6 1145 PM Katwoude The Netherlands	<b>E-mail</b>	monnickendam@devalk.nl

## DISCLAIMER

These particulars are given in good faith as supplied but cannot be guaranteed.



# BAVARIA 55 CRUISER

## GENERAL

<b>Model</b>	BAVARIA 55 CRUISER
<b>Type</b>	sailing yacht
<b>LOA (m)</b>	16,75
<b>LWL (m)</b>	14,96
<b>Beam (m)</b>	4,76
<b>Draft (m)</b>	2,35
<b>Air draft (m)</b>	23,25
<b>Headroom (m)</b>	2,06
<b>Year built</b>	2009
<b>Launched</b>	2010
<b>Builder</b>	Bavaria Yachtbau GmbH, Giebelstad
<b>Country</b>	Germany
<b>Designer</b>	Farr Yachts Design
<b>Displacement (t)</b>	20
<b>Ballast (tonnes)</b>	cast iron and lead 5
<b>CE norm</b>	A
<b>Hull material</b>	GRP
<b>Hull colour</b>	white
<b>Hull shape</b>	full bilged
<b>Keel type</b>	bulb keel
<b>Superstructure material</b>	GRP
<b>Deck material</b>	GRP
<b>Deck finish</b>	teak
<b>Superstructure deck finish</b>	non-skid moulded in
<b>Cockpit deck finish</b>	teak
<b>Antifouling (year)</b>	Sept. 2018
<b>Window frame</b>	aluminium
<b>Window material</b>	tempered glass
<b>Deckhatch</b>	13 x
<b>Portholes</b>	aluminium



# BAVARIA 55 CRUISER

<b>Insulation</b>	foam
<b>Fuel tank (litre)</b>	polyethylene 380 L
<b>Level indicator (fuel tank)</b>	yes
<b>Freshwater tank (litre)</b>	700 L
<b>Level indicator (freshwater)</b>	yes
<b>Blackwater tank (litre)</b>	polyethylene 140 L
<b>Level indicator (blackwater)</b>	yes
<b>Blackwater tank extraction</b>	deck extraction
<b>Wheel steering</b>	cable steering
<b>Emergency tiller</b>	yes
<b>More info on paintwork</b>	Bottom paintwork scraped in May 2016 and coated with 4 layers VC Off-Shore coating. New anti fouling applied Sept. 2018
<b>Extra info</b>	Colve Hitch is berthed in Hong Kong. Please contact our sale office to make an appointment.
<b>Extra info</b>	Hong Kong VAT regulations : no VAT has to be paid. If a yacht is to remain longer than 6 months, a Hong Kong Pleasure Vessel Operator licence must be applied.

## ACCOMMODATION

<b>Cabins</b>	4
<b>Berths</b>	8
<b>Interior</b>	mahogany
<b>Air-conditioning</b>	single cycle airco
<b>Chart table</b>	yes
<b>Galley</b>	yes
<b>Countertop</b>	
<b>Sink</b>	stainless steel 2 x
<b>Cooker</b>	calor gas 3 burner
<b>Oven</b>	yes
<b>Microwave</b>	yes
<b>Fridge</b>	185 L
<b>Freezer</b>	35 L in Fridge



# BAVARIA 55 CRUISER

Hot water system	220V + engine
Water pressure system	electrical
Owners cabin	double bed
Wardrobe	hanging/drawers/shelves
Bathroom	en suite
Toilet	en suite
Toilet system	electric
Wash basin	at the toilet
Shower	en suite
Guest cabin 1	double bed
Wardrobe	hanging and drawers
Bathroom	shared
Toilet	shared
Toilet system	electric
Wash basin	at the toilet
Shower	shared
Guest cabin 2	double bed
Wardrobe	hanging and drawers
Toilet	shared
Toilet system	electric
Wash basin	at the toilet
Shower	shared
Guest cabin 3	bunk bed
Wardrobe	hanging
Extra info	sail storage in foreship 1 x 1,5 x 1,5m

## MACHINERY

No of engines	1
Make	Volvo Penta
Type	D3-110
HP	110,00



# BAVARIA 55 CRUISER

<b>kW</b>	80,85
<b>Fuel</b>	diesel
<b>Year installed</b>	2009
<b>Maximum speed (kn)</b>	9
<b>Cruising speed (kn)</b>	8
<b>Consumption (l/hr)</b>	8
<b>Engine hours</b>	1258
<b>Engine cooling system</b>	freshwater heat exchanger
<b>Drive</b>	shaft
<b>Engine controls</b>	bowden cable
<b>Gearbox</b>	hydraulic
<b>Bowthruster</b>	Side Power 8 HP electric
<b>Propeller type</b>	folding
<b>Propeller blades</b>	4
<b>Propeller shaft material</b>	stainless steel
<b>Shaft lubrication</b>	grease
<b>Manual bilge pump</b>	yes
<b>Electric bilge pump</b>	yes
<b>Bilge alarm</b>	yes
<b>Electrical installation</b>	yes
<b>Generator</b>	dry exhaust Fisher Panda 6kW
<b>Running hours generator</b>	1117
<b>Start battery</b>	100A - 2016
<b>Service battery</b>	300A - Dec. 2017
<b>Bowthruster battery</b>	2016
<b>Battery monitor</b>	yes
<b>Battery charger</b>	yes
<b>Inverter</b>	Victron Phoenix 230V Inverter 12/750 (700W)
<b>Shorepower</b>	with cable

## NAVIGATION



# BAVARIA 55 CRUISER

Compass	yes
Electric compass	yes
Depth sounder	yes
Log	yes
Windset	yes
Repeater	yes
VHF	IC-M422 & IC-M802
Autopilot	with remote control
Rudder angle indicator	yes
Radar	Raymarine RD418D
Radar/GPS/plotter	Raymarine E70 & E80
Navtex	Furuno NX300
AIS receiver	Easy TRX Class B
AIS transponder	Easy TRX Class B
Radio receiver	yes
EPIRB	GME Accusat MT403G

## EQUIPMENT

Sprayhood	yes
Cockpit cover	yes
Bimini	yes
Cockpit cushions	yes
Cockpit table	yes
Bathing platform	hydraulic
Boarding ladder	stainless steel
Transom door	yes
Gangway	yes
Deck shower	yes
Anchor	Delta
Anchor chain	50m stainless steel
Anchor 2	Danforth



# BAVARIA 55 CRUISER

Deck wash	yes
Sea railing	wire
Pushpit	yes
Pulpit	yes
Life raft (pers)	container 6 and 8 pers.
Last life raft survey	2016
Lifejackets	12
Safety harness	13
Lifebuoy	yes
Danbuoy	yes
Safety lines on deck	yes
Radar reflector	yes
Fenders	yes
Mooring lines	yes
Spare parts	yes
Tools	yes
TV	Samsung
DVD player	yes
Surround Sound System	yes
Sub-woofer	yes
Cockpit speakers	yes
Speakers in salon	yes
Fire extinguisher	yes

## RIGGING

Rigging	sloop
Standing rigging	wire
Brand mast	Seldén
Material mast	aluminium
Spreaders	2 X
Mainsail	UK Sails - CXI 15 - Radial - new in Sept. 2018





# BAVARIA 55 CRUISER

<b>Mainsail cover</b>	yes
<b>Battcars</b>	yes
<b>Fully battened mainsail</b>	yes
<b>Genoa</b>	UK Sails 2016
<b>Genoa furler</b>	Furlex
<b>Code Zero</b>	Elvstrom Sails 2010 with furler
<b>Spinnaker</b>	Doyle Sails 2011 with retrieval sock
<b>Trysail</b>	Doyle Sails 2011
<b>Stormjib</b>	Doyle Sails 2011
<b>Backstay adjuster</b>	mechanical
<b>Boomvang</b>	gasspring
<b>Primary sheet winch</b>	Lewmar
<b>Secondary sheet winch</b>	Lewmar
<b>Genoa sheetwinches</b>	Lewmar
<b>Halyard winches</b>	Lewmar
<b>Spinnaker winch</b>	Lewmar
<b>Multifunctional winches</b>	halyard/sheet winches 1 power winch



# BAVARIA 55 CRUISER



# BAVARIA 55 CRUISER



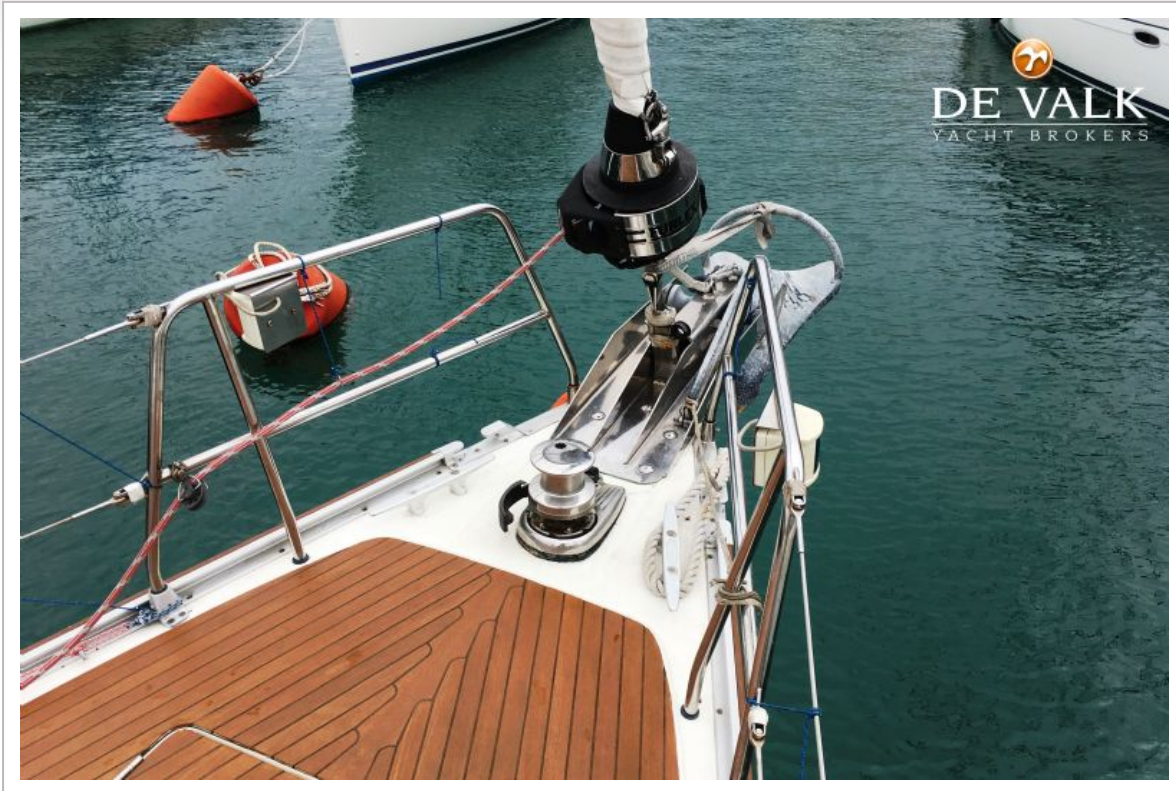
# BAVARIA 55 CRUISER



# BAVARIA 55 CRUISER



# BAVARIA 55 CRUISER



# BAVARIA 55 CRUISER

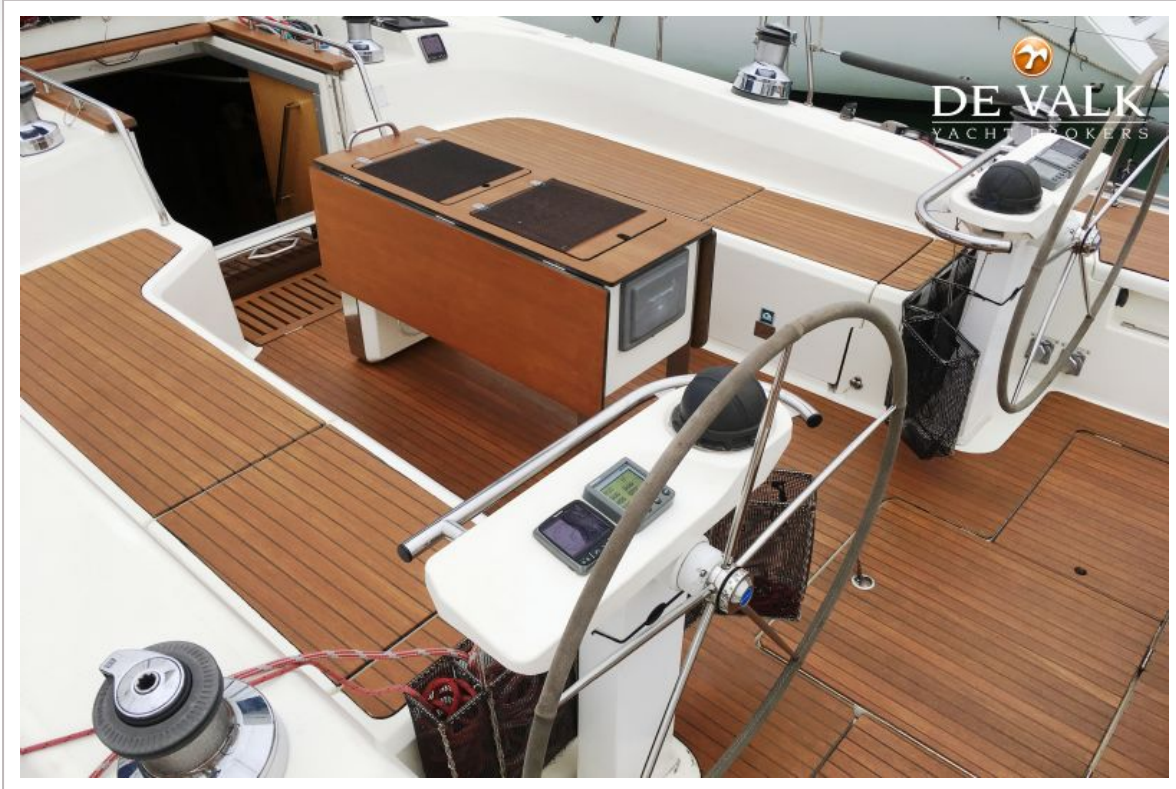


# BAVARIA 55 CRUISER

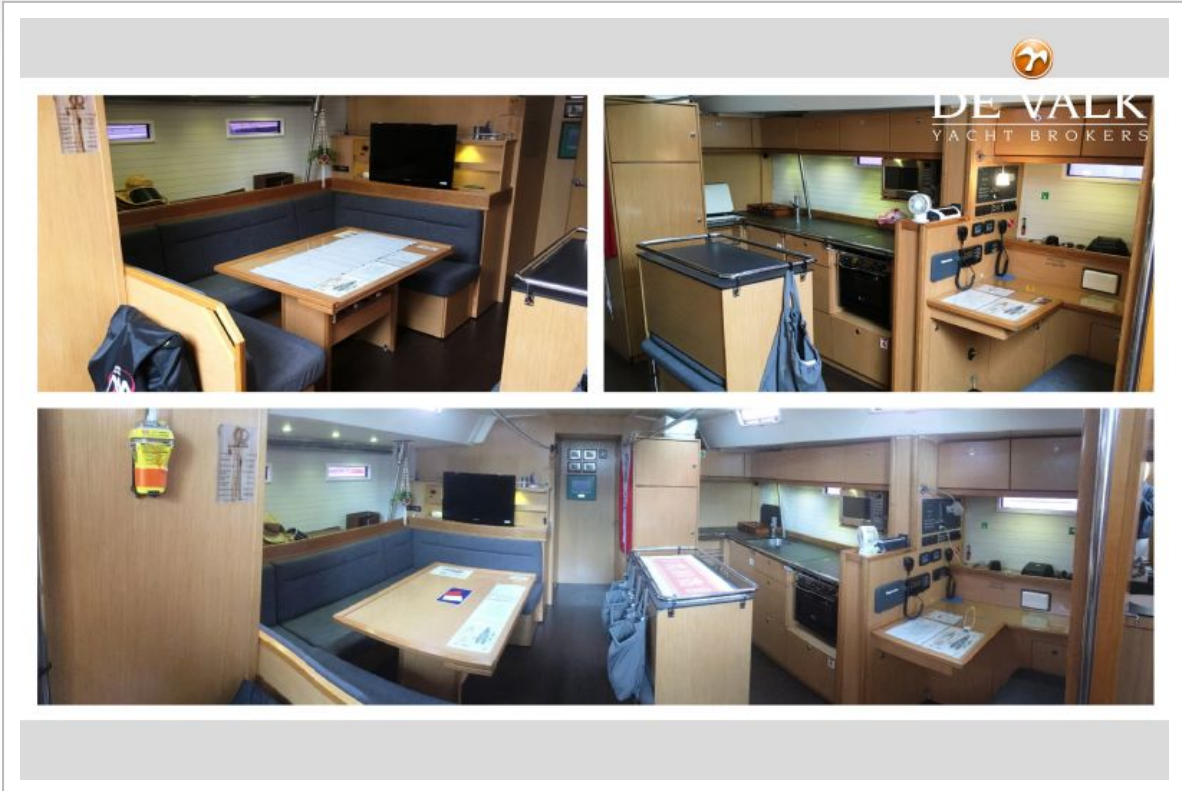




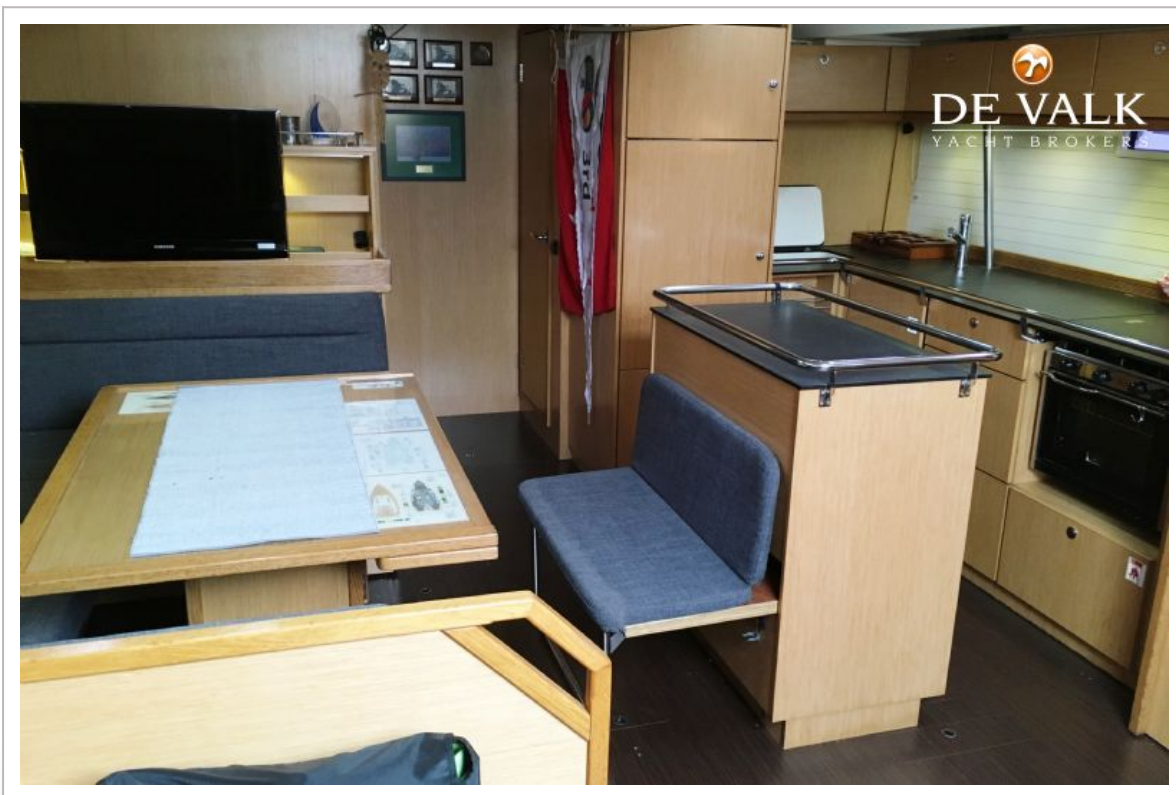
# BAVARIA 55 CRUISER



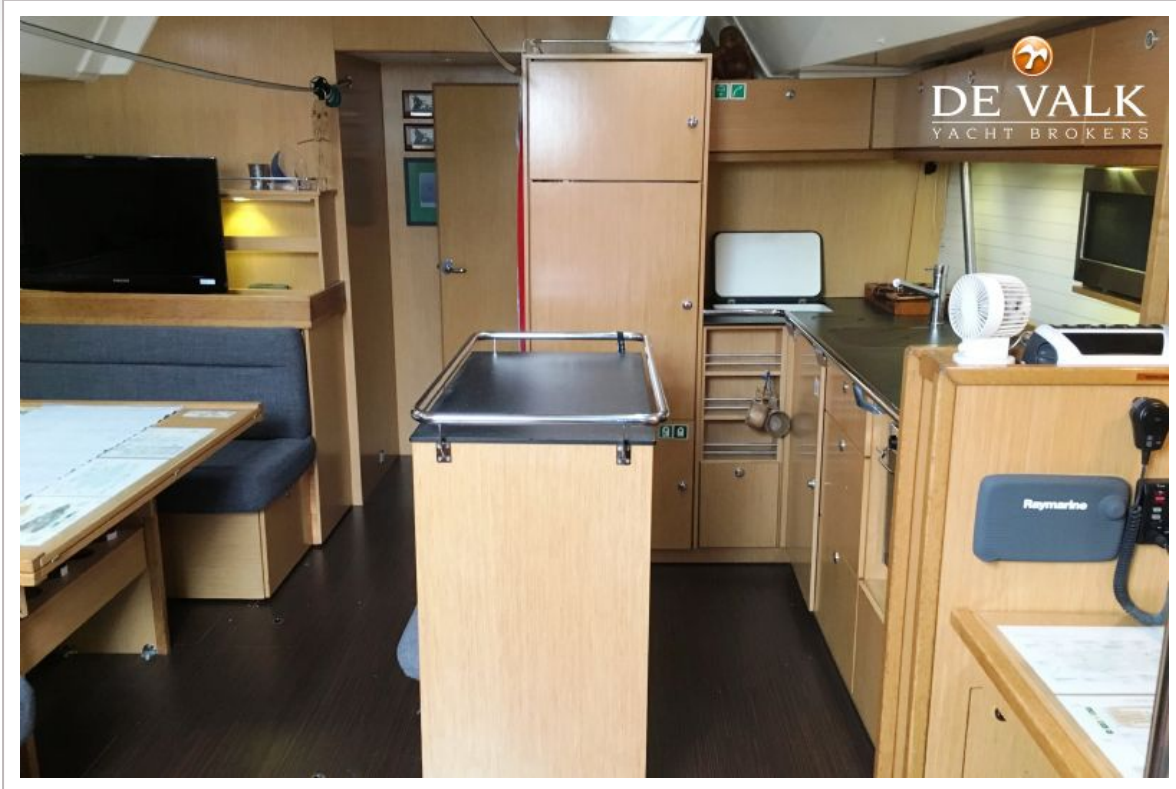
# BAVARIA 55 CRUISER



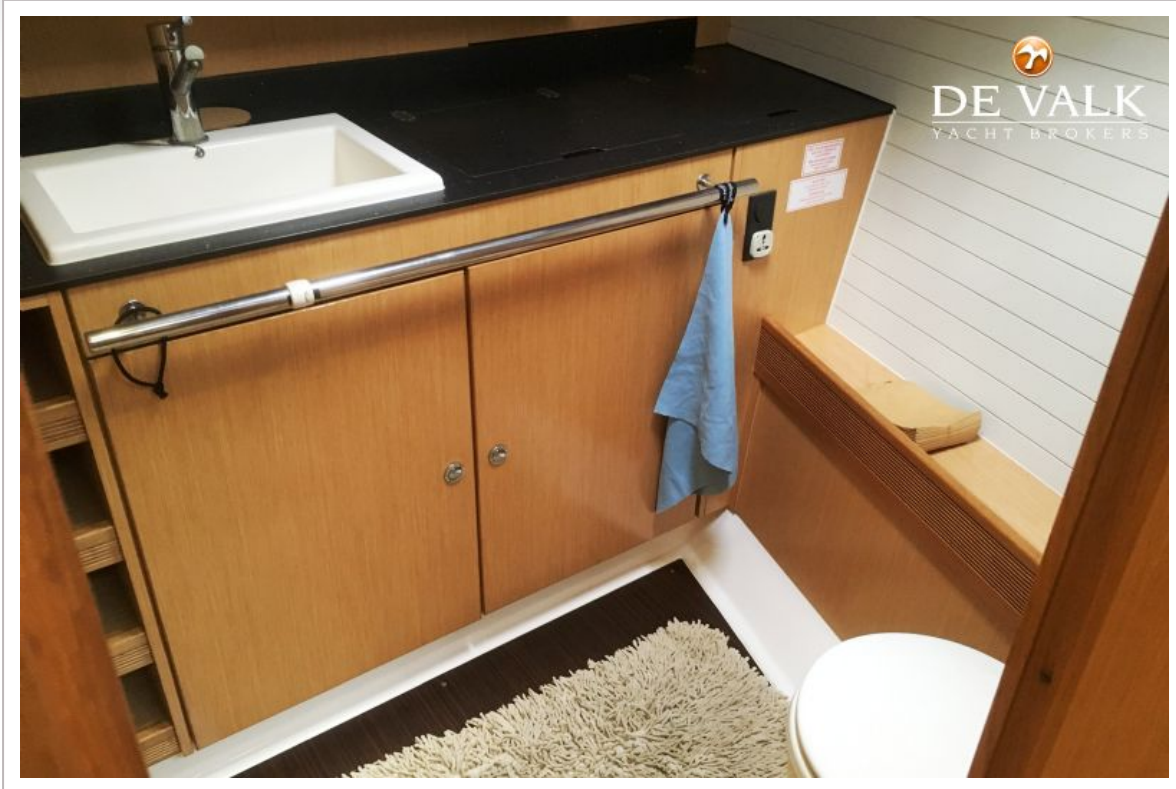
# BAVARIA 55 CRUISER



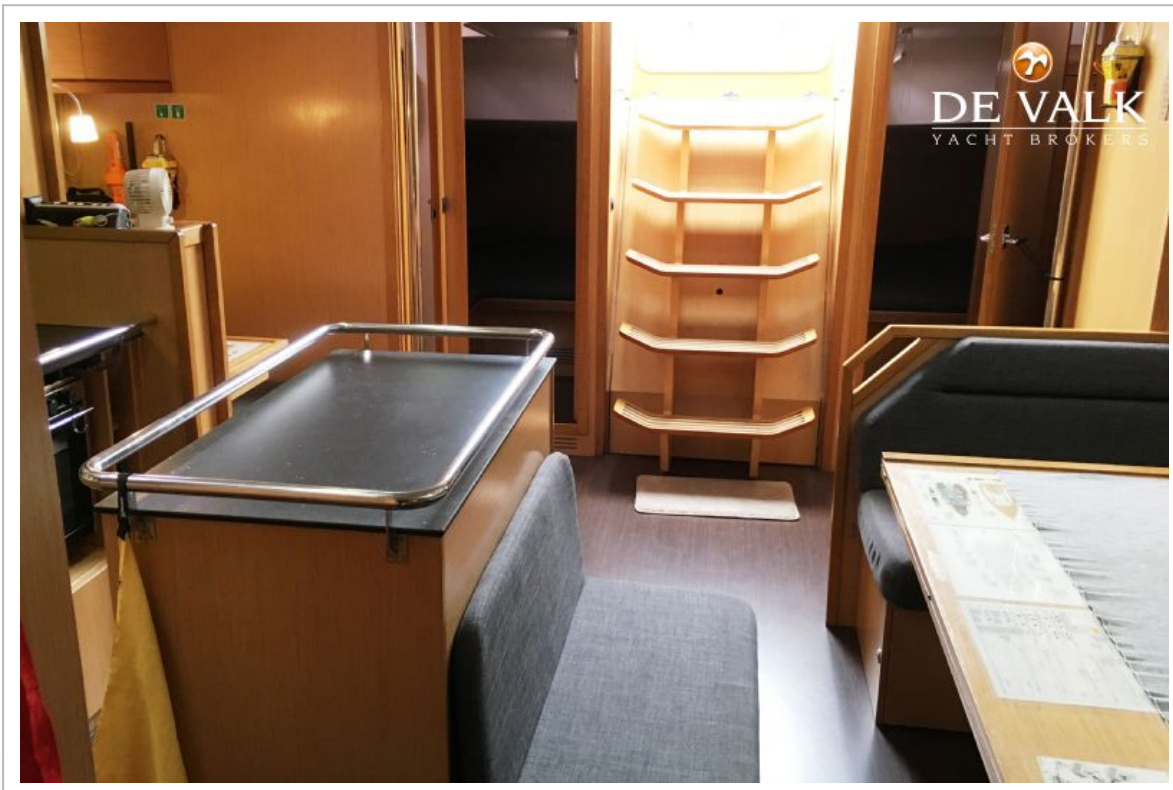
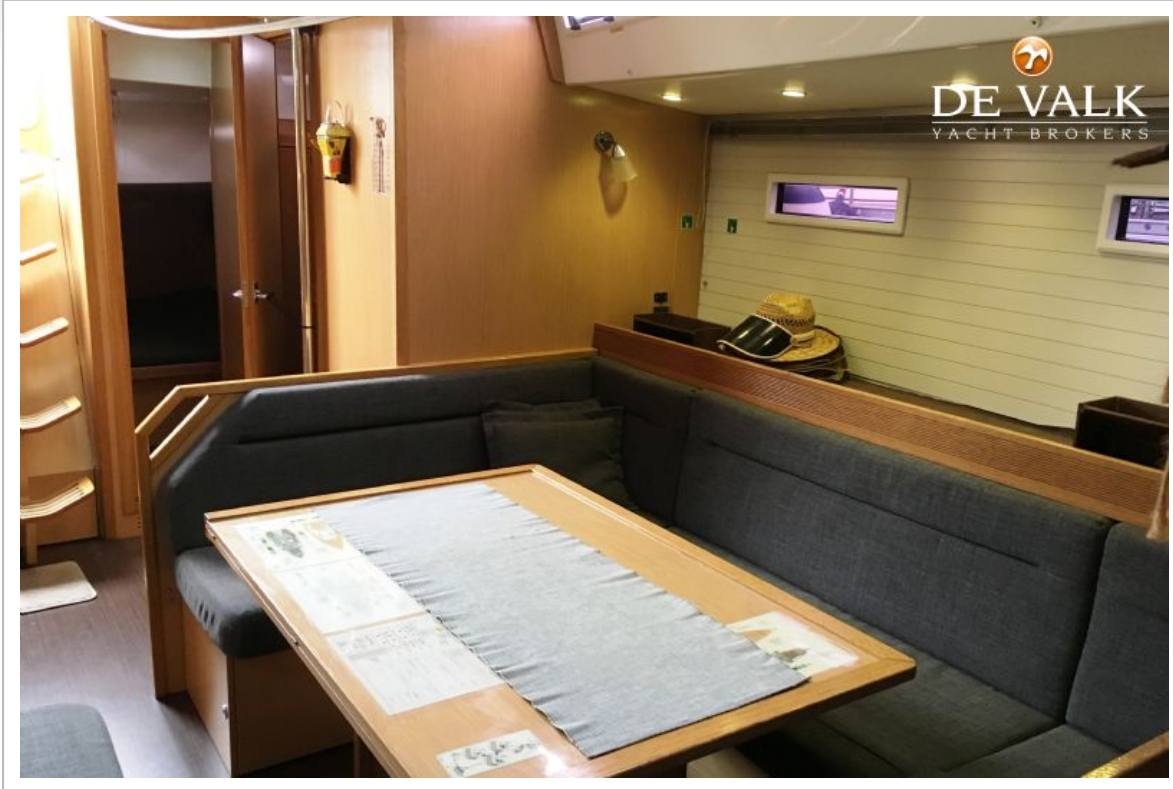
# BAVARIA 55 CRUISER



# BAVARIA 55 CRUISER



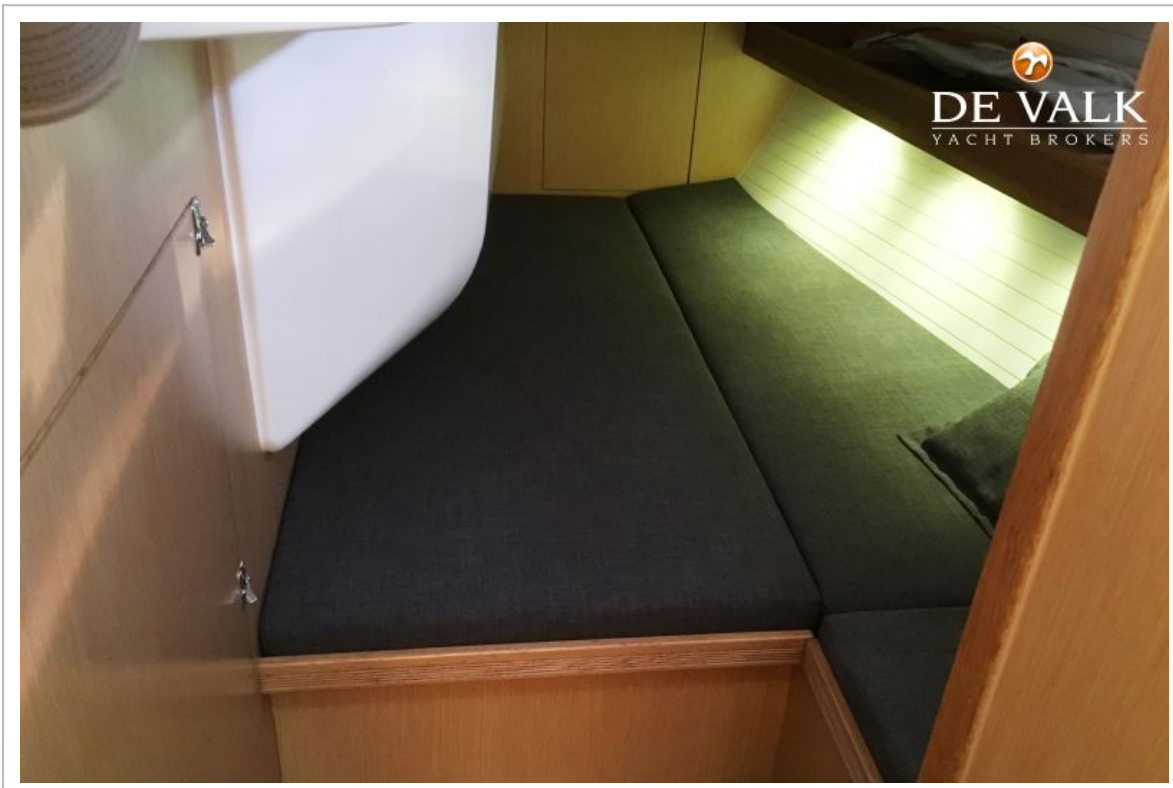
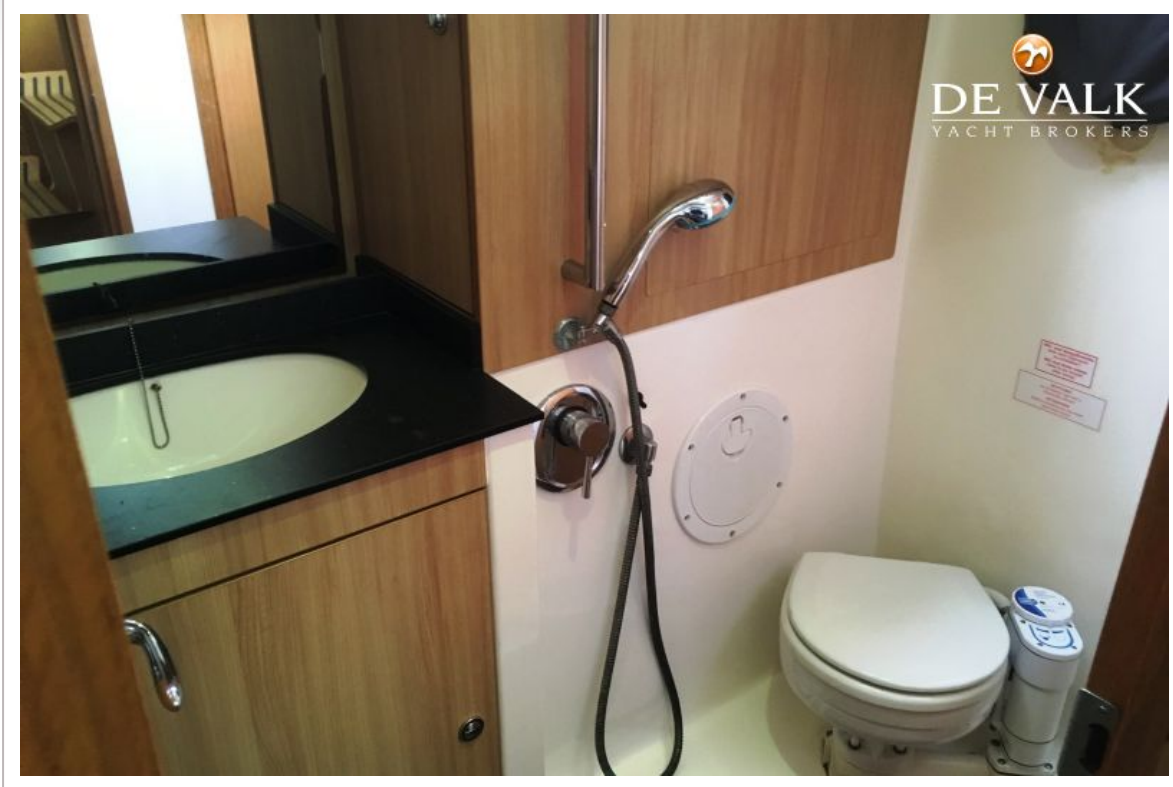
# BAVARIA 55 CRUISER



# BAVARIA 55 CRUISER

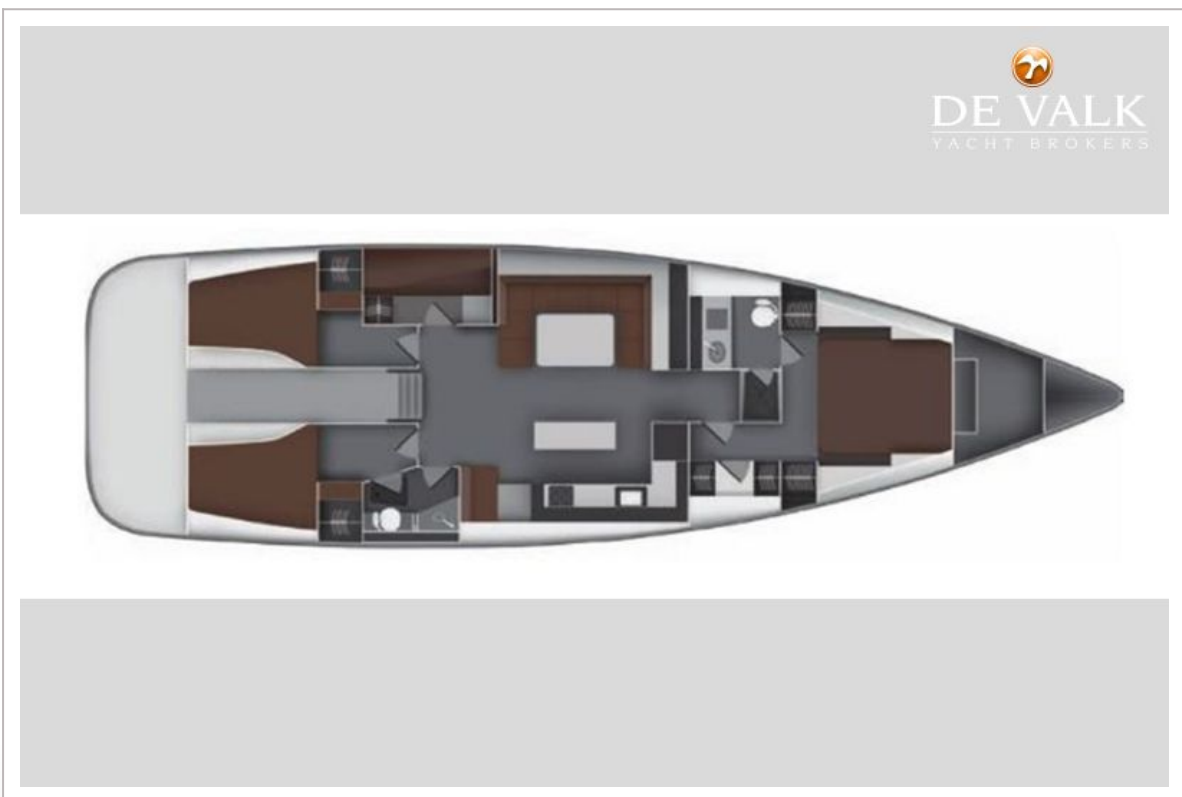
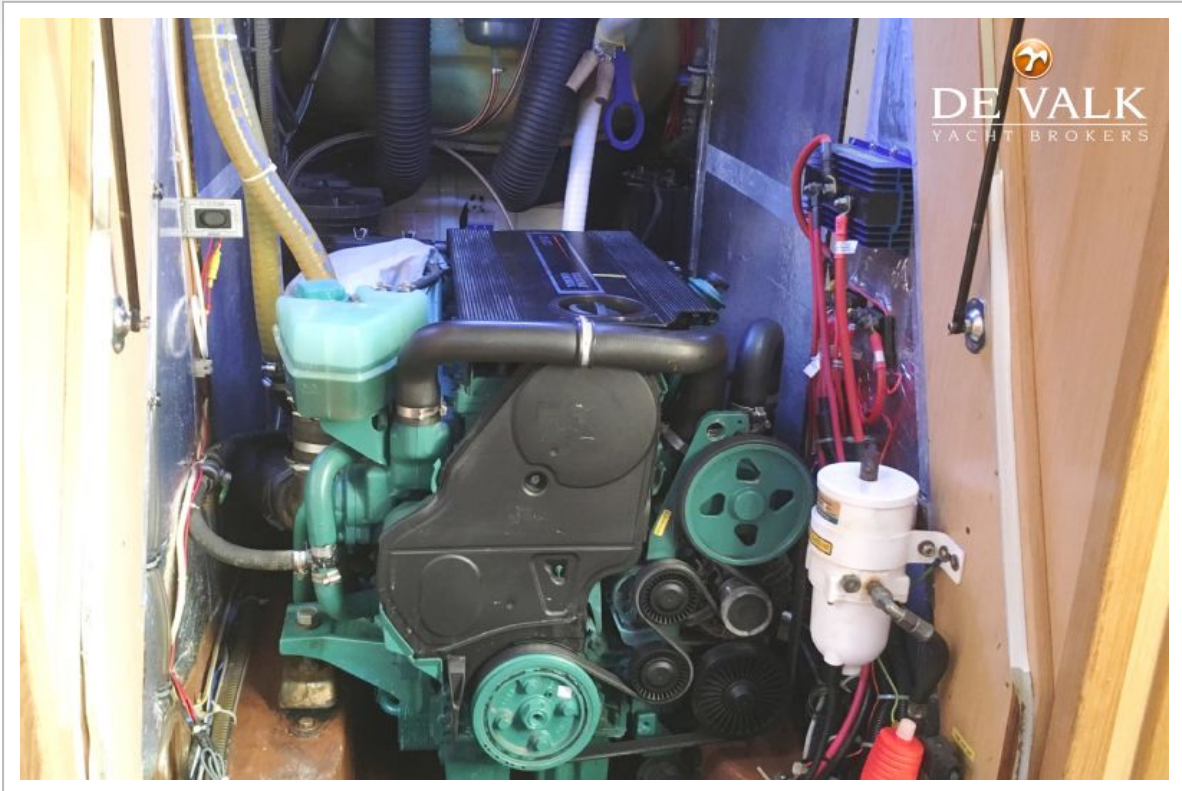


# BAVARIA 55 CRUISER





# BAVARIA 55 CRUISER



# BAVARIA 55 CRUISER

TECHNISCHE DATEN/TECHNICAL DATA



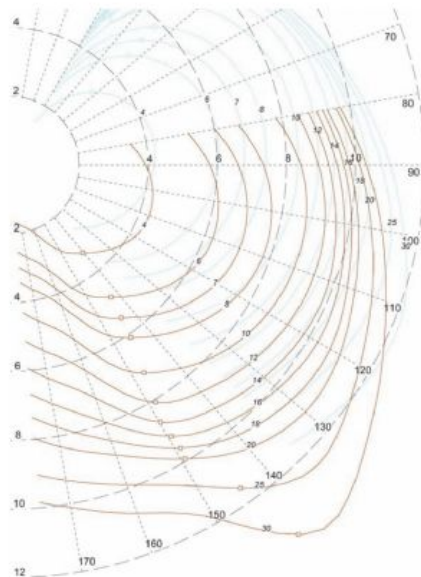
Deck layout./Deck plan.

Gesamtlänge	16,75 m	Length overall
Länge Rumpf	16,16 m	Length hull
Länge Wasserlinie	14,96 m	Length waterline
Gesamtbreite	4,87 m	Beam overall
Tiefgang Standard (ca.)	2,35 m	Draught standard (cast iron keel) (approx.)
Tiefgang Option (ca.)	1,90 m	Draught option (approx.)
Leergewicht (ca.)	17.200 kg	Unladen weight (approx.)
Ballast (ca.)	5.500 kg	Ballast (approx.)
Motor, Volvo-Penta Saildrive	03-110	Engine, Volvo-Penta Saildrive
KW/PS	81/110	KW/hp
Treibstofftank (ca.)	380 l	Fuel tank (approx.)
Wassertank (ca.)	700 l	Water tank (approx.)
Kabine, Standardversion	3/4/5	Cabins
Kojen, Standardversion	6/8/10	Berths
Stehhöhe im Salon (ca.)	2,06 m	Height in salon (approx.)
Großsegel und Rollfock (ca.)	145 m <sup>2</sup>	Mainsail (battened) and fore sail, standard (approx.)
Masthöhe über Wasserlinie (ca.)	23,25 m	Height of mast above water line (approx.)

Alle Daten vorläufig und ohne Gewähr.

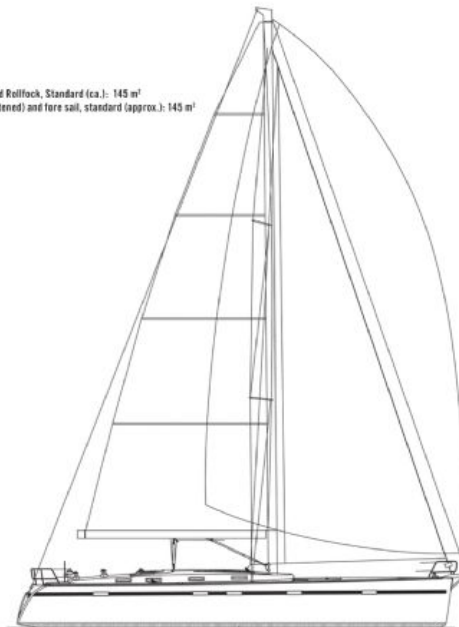
All data is subject to change without notice and given without warranty.

SEGELPLAN UND POLARDIAGRAMM/SAILPLAN AND POLAR DIAGRAM



Das Polardiagramm./The polar diagram.

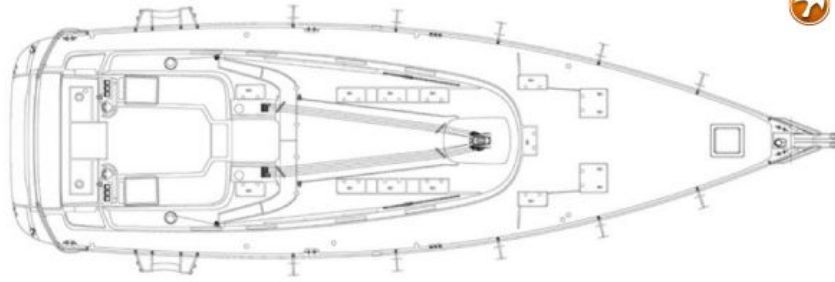
Großsegel und Rollfock, Standard (ca.): 145 m<sup>2</sup>  
Mainsail (battened) and fore sail, standard (approx.): 145 m<sup>2</sup>



Der Segelplan./The sail plan.



# BAVARIA 55 CRUISER



Deckslayout./ Deck layout.



Seitenansicht./Sideview.

