



DE VALK
YACHT BROKERS



VRIPACK SURVEY 1500



DE VALK
YACHT BROKERS

VRIPACK SURVEY 1500

BROKER'S COMMENTS

Vripack Survey 1500 "Spindrift", designed by Vripack Yacht Design, hull built at Slot Jachtbouw and interior built at Ruiters Quality Interiors BV. With her low air draft (3.40m possible) and large fuel capacity (4800 litres), CE-A certified she has the possibilities to sail in the canals and open sea. Three cabin, two cabin layout, central heating, insulated and partly double glazed windows. Continuously well maintained, new navigation equipment in 2023-2024, new heating and airconditioning unit in 2025. Viewing possible by appointment.

Arne Doodeman

SPECIFICATIONS

Dimensions	14.95 x 4.87 x 1.55 (m)	Builder	Slot Jachtbouw/Ruiters Quality Interiors
Built	2009	Cabins	3
Material	Steel	Berths	6
Engine(s)	1 x Perkins Sabre M185C diesel	Hp/Kw	185.00 (hp), 136.16 (kw)
Asking price	Under Offer (VAT Paid)	Lying	contact Monnickendam

CONTACT

Sales office	De Valk Monnickendam	Telephone	+31 299 65 63 50
Address	Hoogedijk 6 1145 PM Katwoude The Netherlands	E-mail	monnickendam@devalk.nl

DISCLAIMER

These particulars are given in good faith as supplied but cannot be guaranteed.



VRIPACK SURVEY 1500

GENERAL

Model	VRIPACK SURVEY 1500
Type	motor yacht
LOA (m)	14,95
LWL (m)	14,00
Beam (m)	4,87
Draft (m)	1,55
Air draft (m)	5,35
Air draft min (m)	3,40
Year built	2009
Launched	2009
Builder	Slot Jachtbouw/Ruiter Quality Interiors
Country	The Netherlands
Designer	Vripack Yacht Design
Displacement (t)	28,6
CE norm	A
Hull material	steel
Hull colour	blue
Keel type	bilge keels
Bilge keels	Posibility to beach due her bilge keels, propellor and rudder protected by her hak.
Superstructure material	steel
Rubbing strake	stainless steel
Deck material	steel
Deck finish	teak
Superstructure deck finish	One part paint and one part teak
Cockpit deck finish	teak
Antifouling (year)	02-2024
Dorades	2 x stainless steel
Window material	double glazing Gebo Stalite. Partly double glazed windows.
Deckhatch	2x Gebo
Portholes	aluminium 4x Gebo



Insulation	rockwool
Mast can be lowered	hydraulic
Fuel tank (litre)	steel Total of approx 4810 litres. (2x 850l, 1x 2750l, daytank 360L)
Level indicator (fuel tank)	Wema
Fuel daytank (litre)	steel Approx. 360 litres with manuel and electric pump.
Level indicator (daytank)	Wema electric measurement and lookingglass
Freshwater tank (litre)	stainless steel Approx. 1350 litres
Level indicator (freshwater)	Wema
Blackwater tank (litre)	steel Approx. 354 litres
Level indicator (blackwater)	Heftronic (full notification only)
Blackwater tank extraction	deck extraction
Greywater tank (litre)	steel Approx. 354 litres
Level indicator (greywater)	Heftronic (full notification only)
Wheel steering	hydraulic And electric joystick steering
Inside helm position	yes
Emergency tiller	yes
Extra info	The fuel/water/black/grey tanks are fitted with manhole.
Extra info	yes

ACCOMMODATION

Cabins	3
Berths	6
Interior	mahogany Ruiters Quality Interiors BV.
Floor	Mahogany wooden floor.
Open cockpit	yes
Heating	central heating Maritime Booster Mini Combi 2 (new 2025)
Heating 2	yes
Air-conditioning	MAR-IX Mave Chiller unit 10 kW (34.100 Btu) (new 2025)
Dinette	yes
Opening door to cockpit	Double teak entrance door



VRIPACK SURVEY 1500

Galley	yes
Countertop	corian
Sink	stainless steel
Cooker	induction Miele 4 burner
Extractor	yes
Microwave/oven combi	Miele
Fridge	Miele 211 litres
Freezer	AEG (new 2025)
Hot water system	on central heating
Water pressure system	electrical
Dishwasher	Siemens (new 2024)
Owners cabin	French bed
Wardrobe	hanging and drawers
Toilet	en suite
Toilet system	electric
Wash basin	in the bathroom
Shower	en suite
Guest cabin 1	double bed
Wardrobe	hanging and drawers
Bathroom	shared
Toilet	yes
Toilet system	electric
Wash basin	yes
Shower	yes
Guest cabin 2	double bed Single or conversion to double bed.
Wardrobe	drawers and shelves
Washing machine/dryer combi	Miele soft care system WT 2670
Extra info	High quality mahogany interior built by Ruiters Quality Interiors BV. See the detail photos.
Extra info	Electric in height adjustable seat with convertible backrest for the steering position/settee



MACHINERY

No of engines	1
Make	Perkins Sabre
Type	M185C
HP	185
kW	136.16
Fuel	diesel
Year installed	2009
Engine hours	271
Engine cooling system	freshwater heat exchanger
Drive	shaft
Engine controls	electrical Morse
Gearbox	hydraulic ZF Hurth, type ZF 80 IV - 2.5
Bowthruster	hydraulic
Exhaust	watercooled
Thrust bearing	yes
Propeller type	fixed
Propeller blades	4 bladed propeller
Propeller shaft material	stainless steel
Shaft lubrication	oilbath
Electric bilge pump	yes
Bilge alarm	Heftronic
Generator	Mastervolt Wisper generator 10 Ultra
Running hours generator	334 hrs (9-04-2025)
Start battery	2 x optima red top (new 2021)
Service battery	Approx 600ah
Generator battery	Mastervolt 90 ah AGM (new 07-2023)
Battery monitor	Mastervolt Power system control panel
Battery charger	Mastervolt Mass 24/100, 1x 12/10 Mastervolt, 1x Mastervolt IVO
Inverter	Mastervolt Mass Sine 24/5000
Shorepower	with cable



Insulation transformer	Mastervolt Mass GI 3.5
Extra info	Mastervolt Systemswitch
Extra info	Engine room entrance via guest cabin and cockpit bench. Large engine room air blower
Extra info	Prestolite electric 24/60ah alternator and Mastervolt 24/75 alternator.

NAVIGATION

Depth sounder/log	Simrad (new installed in the period 2023-2024)
VHF	Simrad RS82 with Ac Antennas CX4 (VHF antenne) (new installed in the period 2023-2024)
Autopilot	Simrad AP25 (new installed in the period 2023-2024)
Rudder angle indicator	VDO and via Simrad autopilot
Radar	Simrad Halo 20+ (new installed in the period 2023-2024)
Radar/GPS/plotter	Simrad (new installed in the period 2023-2024)
Wifi antenna	Peplink Maritime 40 5G, Pepwave Max BR1 5G 4gbs router, Peplink AP one AC mini (new installed in the period 2023-2024)
AIS transceiver	Simrad (new installed in the period 2023-2024)
Navigation lights	yes
Searchlight	Sanshin HR-1012

EQUIPMENT

Cockpit cover	New cockpit cover/bimini 01-2025.
Bimini	Stainless steel bimini frame, new cockpit cover/bimini 01-2025.
Cockpit cushions	yes
Cockpit table	Two teak cockpit tables with stainless steel pole.
Bathing platform	yes
Anchor	Stainless steel anchor.
Anchor chain	Galvanized chain
Windlass	hydraulic Lofrance Falkon
Deck wash	yes
Davits	stainless steel Single stainless steel davit.



Davits controls	manual
Sea railing	stainless steel
Grab rail (superstructure)	stainless steel
Railing side opening gates	yes
Life raft	container Sea-Safe
Life raft (pers)	6
Last life raft survey	New in 2023, next survey 10-2026.
Wiper	3 heavy duty wipers with Exalto wiper control.
Fenders	yes
Mooring lines	yes
TV	Philips Flattv on liftsystem.
Clock - barometer	Wempe clock, baro and hygrometer.
Fire extinguisher	Inspected 31-01-2025.
Extinguisher in engine room	Automatic N2 blussing and CO2 extinguisher. Inspected 31-01-2025.





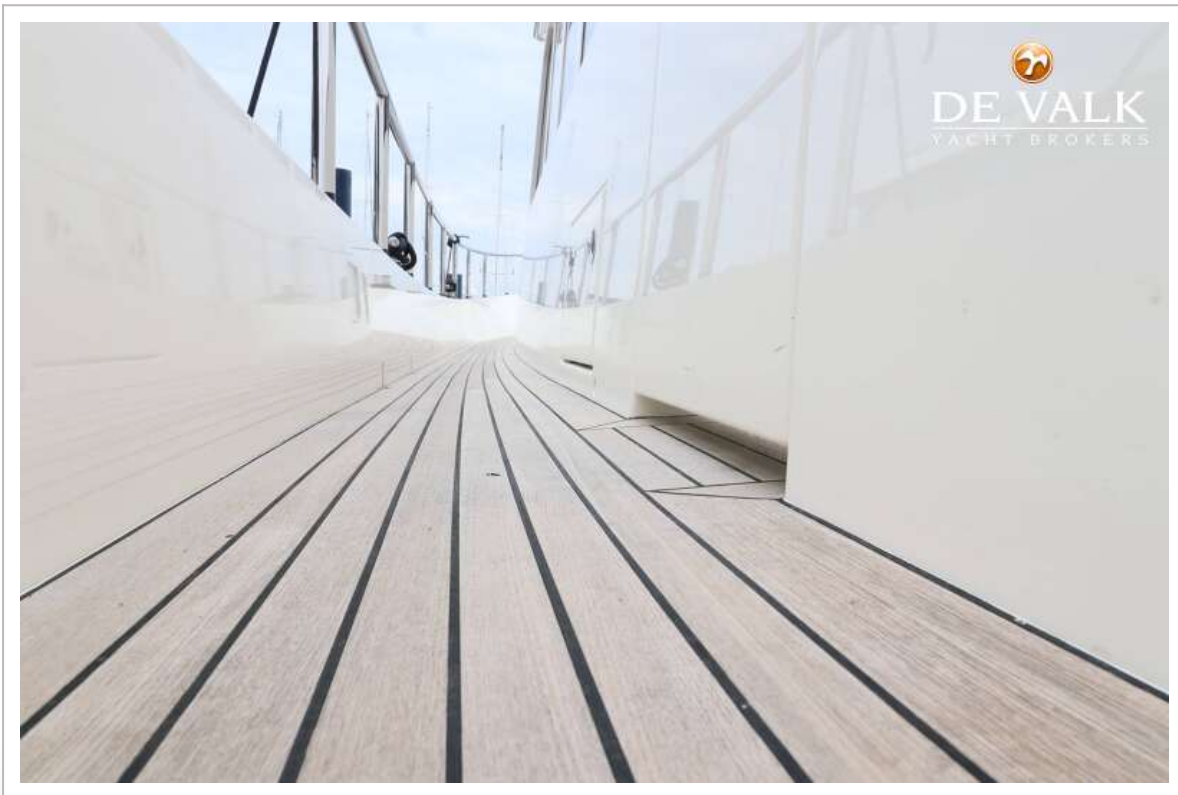


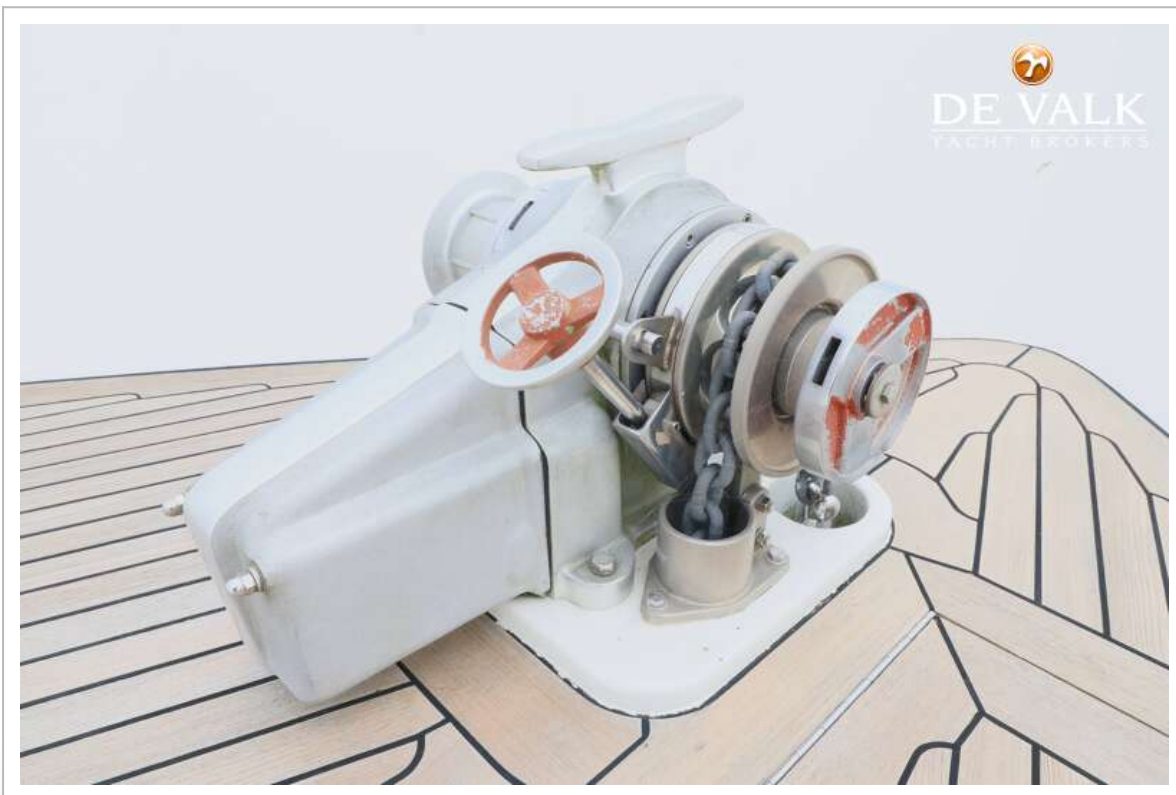
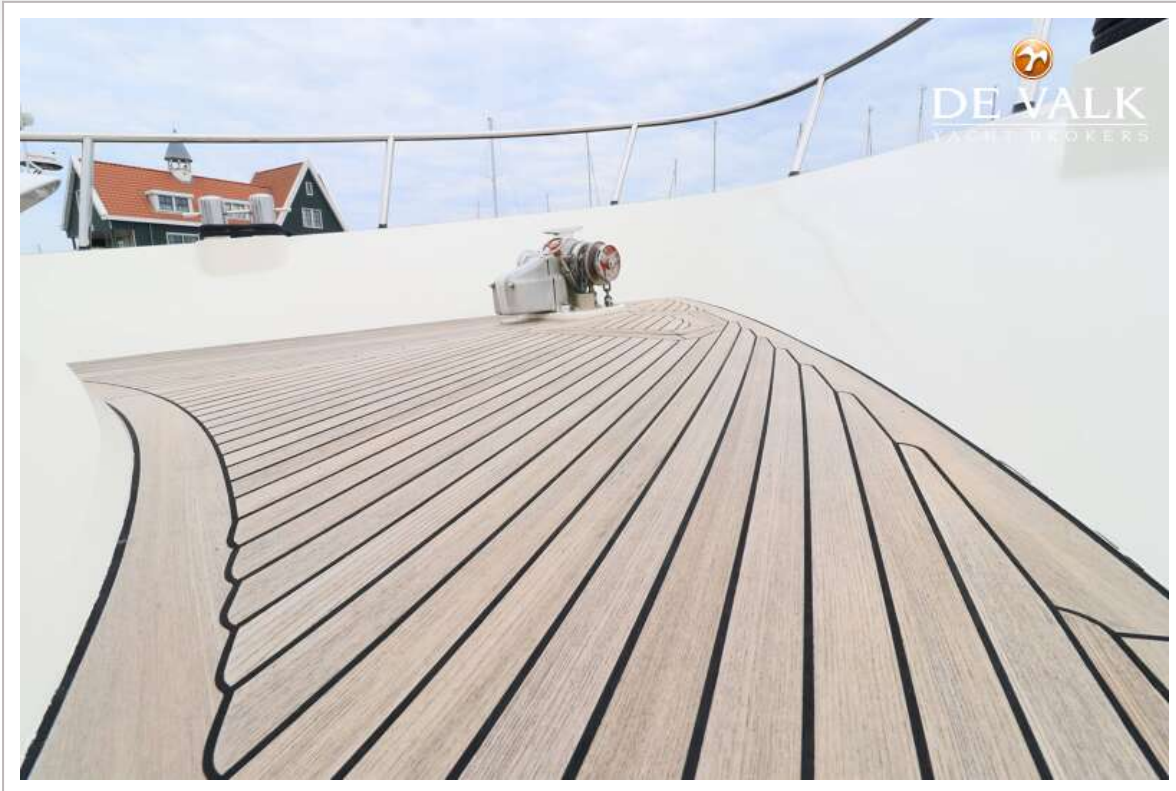




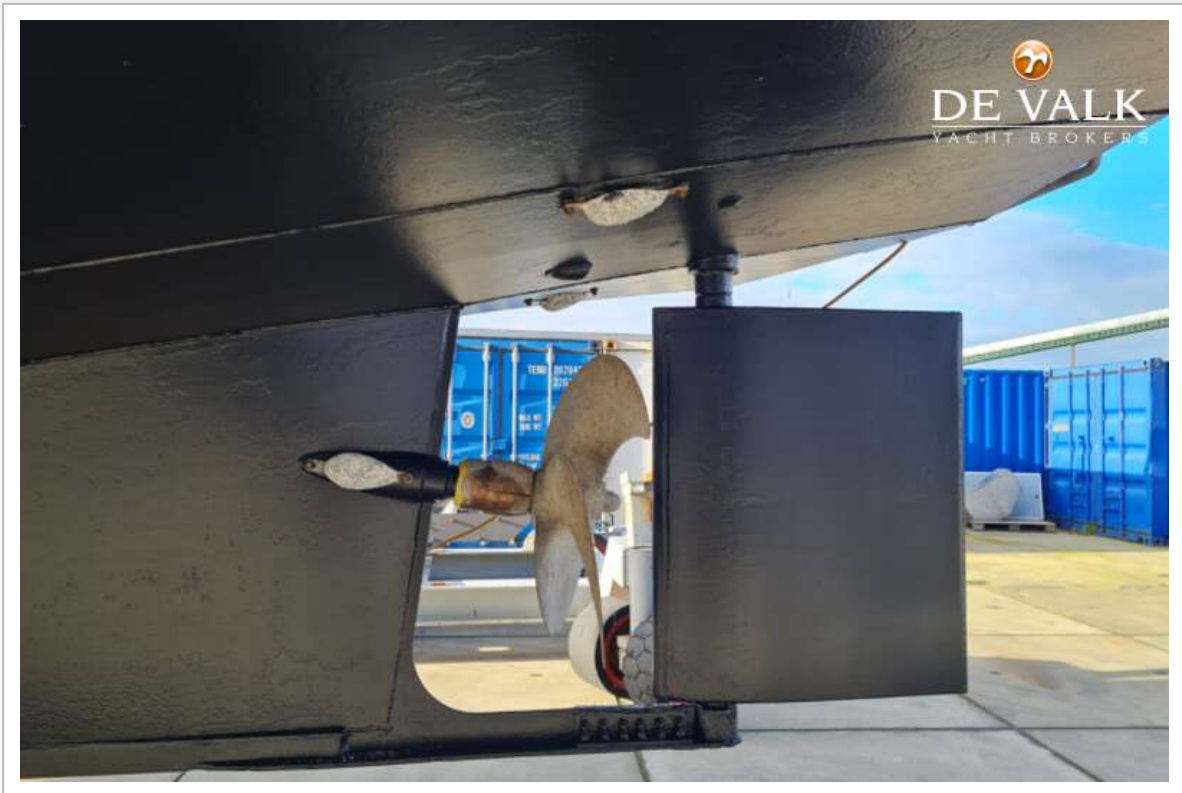








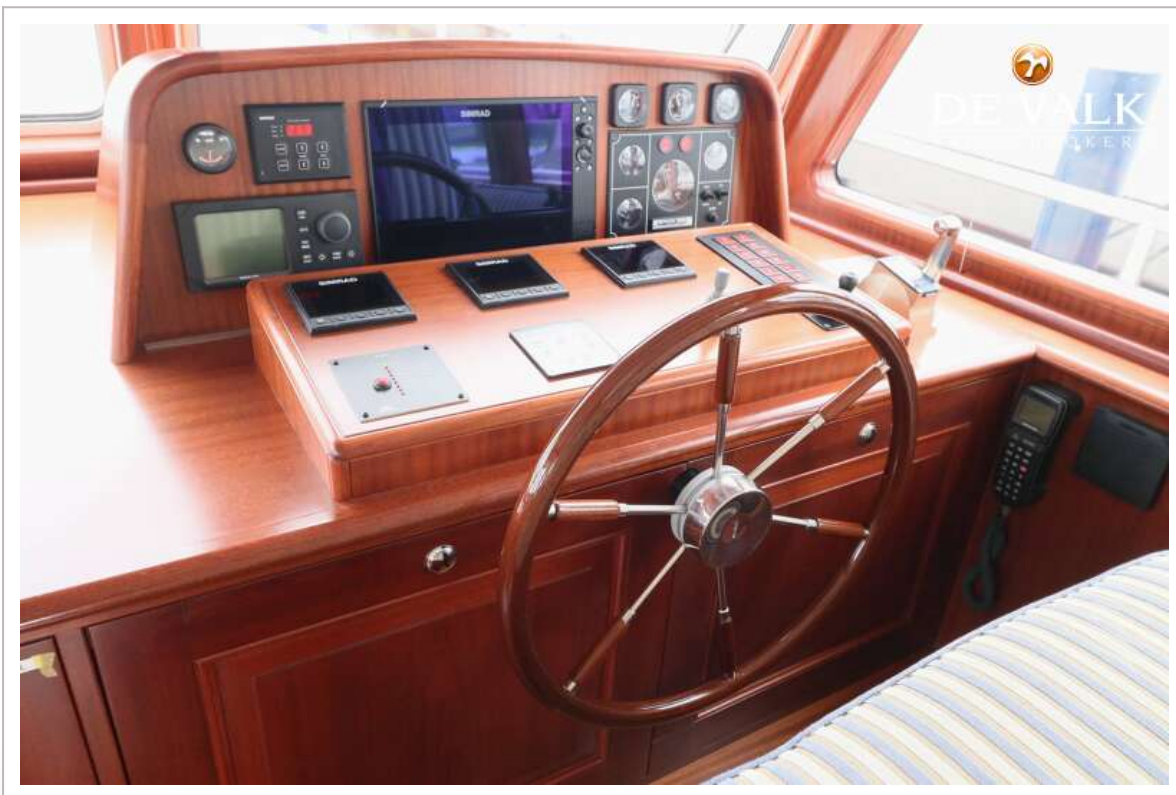
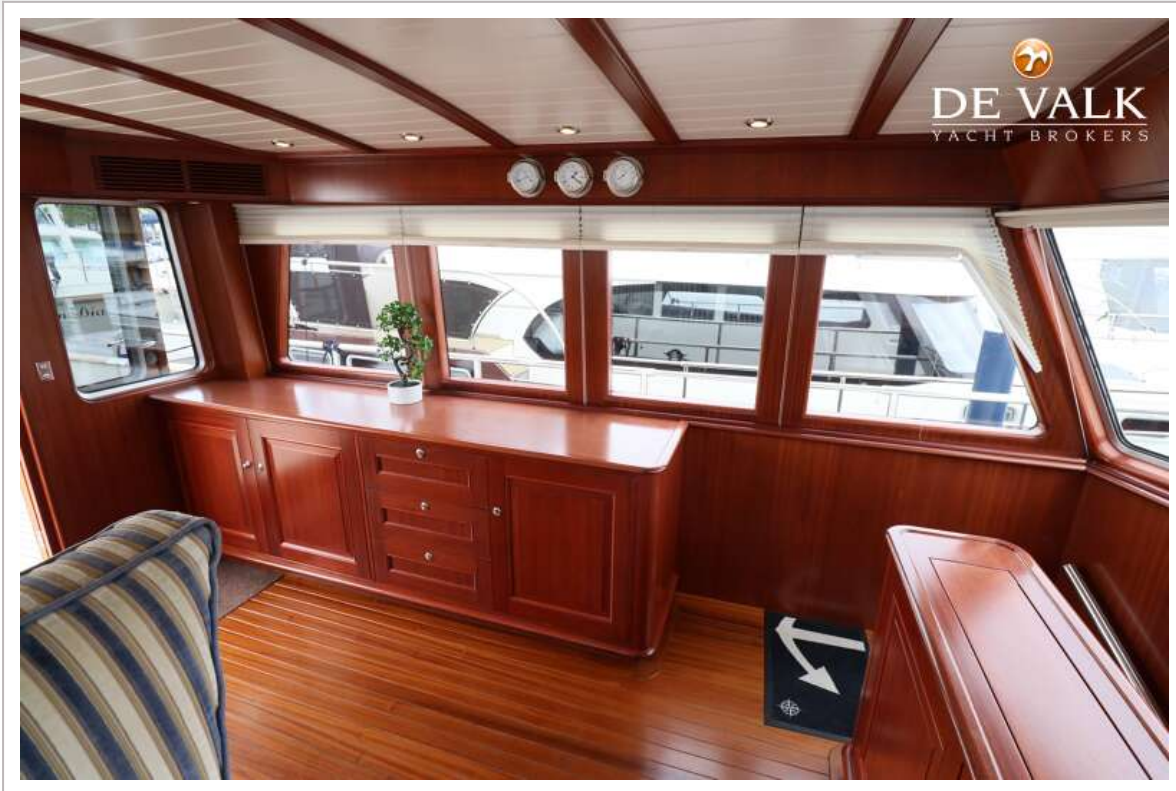




VRIPACK SURVEY 1500

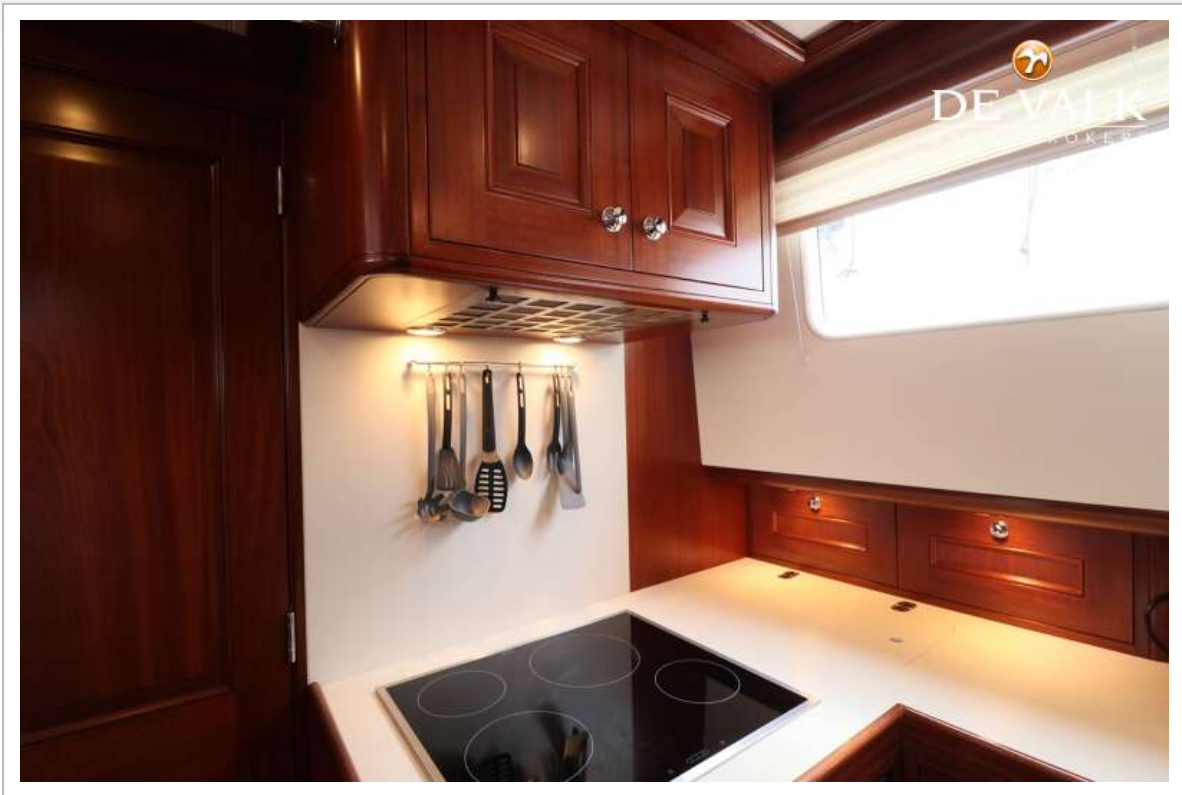


VRIPACK SURVEY 1500



VRIPACK SURVEY 1500











VRIPACK SURVEY 1500

