



X-YACHTS X-35 ONE-DESIGN SPECIAL



DE VALK
YACHT BROKERS

X-YACHTS X-35 ONE-DESIGN SPECIAL

BROKER'S COMMENTS

"ESTELLO, X-Yacht's X-35 One-Design Special is a fresh water boat, customized and equipped for fast, shorthanded inland and off-shore cruising. She's a dream to sail, a joy to helm with fingertip steering, allowing fast passages to distant ports. Maintained to the highest level with many upgrades since the boat was purchased by the current owners in 2013. Just check all the specifications, details, and additional photos and you'll notice that this is a rare opportunity to become the new owner of a uniquely customized X-35. ESTELLO is truly ready to sail away!

Harald Padberg

SPECIFICATIONS

| | | | |
|---------------------|-------------------------|----------------|---------------------|
| Dimensions | 10.95 x 3.27 x 2.15 (m) | Builder | X-Yachts |
| Built | 2006 | Cabins | 3 |
| Material | GRP | Berths | 8 |
| Engine(s) | 1 x Yanmar 3YM20 diesel | Hp/Kw | 20 (hp), 14.70 (kw) |
| Asking price | sold (VAT) | Lying | at sales office |

CONTACT

| | | | |
|---------------------|--|------------------|------------------------|
| Sales office | De Valk Monnickendam | Telephone | +31 299 65 63 50 |
| Address | Hoogedijk 6 1145 PM Katwoude The Netherlands | E-mail | monnickendam@devalk.nl |

DISCLAIMER

These particulars are given in good faith as supplied but cannot be guaranteed.



X-YACHTS X-35 ONE-DESIGN SPECIAL

GENERAL

| | |
|----------------------------|---|
| Model | X-YACHTS X-35 ONE-DESIGN SPECIAL |
| Type | sailing yacht |
| LOA (m) | 10,95 |
| LWL (m) | 9,12 |
| Beam (m) | 3,27 |
| Draft (m) | 2,15 |
| Air draft (m) | 18,75 |
| Headroom (m) | 1,77 |
| Year built | 2006 |
| Builder | X-Yachts |
| Country | Denmark |
| Designer | Niels Jeppesen |
| Displacement (t) | 4,5 |
| Ballast (tonnes) | Lead/Ioden/ Blei bulb 1,7 t + 0,2t. lead/lood/Blei in bilge |
| CE norm | A |
| Hull material | GRP |
| Hull colour | white |
| Hull shape | round-bilged |
| Keel type | bulb keel |
| Superstructure material | GRP |
| Rubbing strake | stainless steel |
| Deck material | GRP |
| Deck finish | non-skid moulded in |
| Superstructure deck finish | non-skid moulded in |
| Cockpit deck finish | non-skid moulded in |
| Antifouling (year) | 2022 - Coppercoat |
| Window frame | aluminium |
| Window material | perspex |
| Deckhatch | 3 x |
| Fuel tank (litre) | stainless steel 60 L. |



| | |
|-----------------------------|---|
| Level indicator (fuel tank) | yes |
| Freshwater tank (litre) | polyethylene 110 L. |
| Wheel steering | cable steering |
| Emergency tiller | yes |
| More info on hull | Short fixed, white-sprayed, stainless steel bowsprit with fixed stainless steel "water stay" and tackline fairlead; LOA is now 10,95. Osmosis treatment - peeling and hotvac - is done in 2019/2020. After treatment, hull is rebuilt with extra layer of glass fiber, full epoxy. Professionally applied outer layer epoxy with Coppercoat with some rework in 2022. - 10 years no antifouling required. |
| More info on paintwork | Yearly full polyester maintenance by DULON. |
| Extra info | Deeper rudder blade; custom developed and manufactured in 2012 by Bosgraaf/JEFA. Including new JEFA self-aligning bearings for distinctly more, better and longer control. Rudder bearings are checked in 2021. |
| Extra info | All stanchions remounted in 2017. Now a much more stronger construction. |
| Extra info | Original displacement is 4,3 t and original ballast is 1,7 t. There is an additional 200 kg lead ballast below the mast under the floor which can be taken out. This greatly improves motions without any loss of speed or sensitivity. |

ACCOMMODATION

| | |
|---------------------|----------------|
| Cabins | 3 |
| Berths | 8 |
| Interior | mahogany |
| Floor | teak and holly |
| Open cockpit | yes |
| Headroom saloon (m) | 1,77 M. |
| Heating | Webasto diesel |
| Navigation center | yes |
| Chart table | yes |
| Dinette | yes |



X-YACHTS X-35 ONE-DESIGN SPECIAL

| | |
|-----------------------|---|
| Galley | yes |
| Countertop | yes |
| Sink | stainless steel |
| Cooker | calor gas |
| Oven | yes |
| Fridge | Top loader |
| Hot water system | 220V + engine Calorfier/boiler 20L. |
| Water pressure system | electrical |
| Owners cabin | double bed |
| Bed length (m) | 2,05 |
| Bathroom | separate |
| Toilet | In the bathroom / in de badkamer / im Badezimmer |
| Toilet system | New / nieuw / Neu 2022 |
| Wash basin | in the bathroom Hot/Cold - Warm/Koud / Warm/Kalt water |
| Guest cabin 1 | double bed |
| Bed length (m) | 2,00 M. |
| Guest cabin 2 | double bed |
| Bed length (m) | 2,00 M. |
| Extra info | PS & SB convertible bed in saloon - 1,95 M |
| Extra info | Gas hoses renewed in 2020 - certificate valid up to 3/2023 |
| Extra info | Cushions, upholstery and backrests in the saloon are renewed and upgraded by Neptune in 2020. |
| Extra info | Water pressure pump is upgraded to larger capacity in 2019. |
| Extra info | All interior light LED (at Saloon table defect) |

MACHINERY

| | |
|---------------|--------|
| No of engines | 1 |
| Make | Yanmar |
| Type | 3YM20 |
| HP | 20 |
| kW | 14.70 |



X-YACHTS X-35 ONE-DESIGN SPECIAL

| | |
|--------------------------------|---|
| Fuel | diesel |
| Year installed | 2006 |
| Maximum speed (kn) | 6 |
| Cruising speed (kn) | 6 |
| Consumption (l/hr) | 2 |
| Engine hours | 1.064 |
| Engine cooling system | freshwater heat exchanger |
| Drive | sail-drive |
| Saildrive seal | new in 2018 |
| Gearbox | mechanical |
| Propeller type | Flexofold |
| Propeller blades | 2 |
| Manual bilge pump | yes |
| Electric bilge pump | yes |
| Electrical installation | 12V/220V |
| Start battery | Optima Red Top 50Ah (2017, excellent condition) |
| Service battery | Exide Gel ES1600 140 Ah (2019, in excellent condition) |
| Battery monitor | Victron BMV-702 (monitoring starter and service battery) |
| Battery charger | Mastervolt ChargeMaster 12/25-3 (2018) |
| Inverter | Victron new in 2018; good for low Amp/Voltage appliances such as laptop/harddryer. |
| Shorepower | with cable |
| Extra info | Engine and all technical installations professionally maintained (Jachtservice Enkhuizen). Major service engine and saildrive in 2022 (including belts) |
| Extra info | New engine control lever in 2015. |

NAVIGATION

| | |
|------------------------------|--|
| Compass | Plastimo 135 lighted compass in custom washboards exchangeable with non-compass board |
| Multi control display | 4 x ST290 graphic in bracket at the mast. 1 x ST290 graphic in the cockpit. 1 x ST290 at nav station and 2 x P70s at the helm. |



X-YACHTS X-35 ONE-DESIGN SPECIAL

| | |
|---------------------------------|--|
| Depth sounder/log | yes |
| Windset | Raymarine (2019) |
| VHF | Icom M423G VHF class D - DSC w/ integrated GPS dual station (at chart table and in cockpit) -from 2016 and a stainless steel antenna and cable (low resistance) - new in 2019. VHF ICOM Commandmic second station in cockpit - 2016 + custom stainless steel protection of Commandmic connector. |
| VHF handheld | Icom M33 with docking station + Raymarine Ray 101 class D DSC with fixed charging station at nav station. |
| Autopilot | JEFA direct drive type 1 (pancake drive) low power consumption and frictionless when not in use. Raymarine EVO EV-100S electronics (2020) and 2 x Raymarine EVO 70 display/control stations at the wheel PS/SB (2020). Raymarine S100 wireless remote control on lanyard (2017). |
| Plotter/GPS | Raymarine A75 chart plotter (2014) in cockpit bulkhead with integrated GPS antenna. Raymarine C70 Chart plotter at Nav. station with Raystar 125 antenna. Raymarine Bluetooth RCU-3remote control chart plotter (2021) mounted at steering wheel. |
| Electronic chart(s) | for Raymarine A75 - Navionics 28XG: FR / UK / BE & NL updated April 2022. |
| AIS transceiver | Vesper Marine WatchMate 850 class B AIS monitor at nav station, oblique mounted to face cockpit (2015). AIS loud external alarm in cockpit; switchable on/off. Vesper Marine SP160 powered active splitter AIS/VHF/radio. |
| EPIRB | Oceansignal - 2021 |
| Personal MOB transmitter | Raymarine Lifetags, wireless MOB warning system, loud alarm, interfaced to A75 plotter for automatic MOB position indication (2 units) |
| Navigation lights | all LED. Upgraded PS/SB and stern navigation lights (2015), steam light and Tri-color/anchor light. |

EQUIPMENT

| | |
|------------------------|-----------------------------------|
| Sprayhood | UK-Sails |
| Boarding ladder | stainless steel |
| Deck shower | with hot and cold water mixer tap |



X-YACHTS X-35 ONE-DESIGN SPECIAL

| | |
|-----------------------|---|
| Anchor | Delta 12 Kg |
| Anchor chain | yes |
| Sea railing | wire |
| Pushpit | yes |
| Pulpit | yes |
| Life raft | valise (or bag) Liferaft Seago G6 Off Shore |
| Life raft (pers) | 6 |
| Last life raft survey | 06/2021 - valid through 06/2024 |
| Radar reflector | Tri-lens passive on 2nd spreader |
| Fenders | yes |
| Mooring lines | yes |
| Radio | Fusion MS-RA50 |
| Cockpit speakers | 1 x for VHF |
| Speakers in salon | 2 X Kenwood |
| Fire extinguisher | yes |
| Extra info | MICA ML-600 compact rechargeable handlamp in fixed charging station at nav station. |

RIGGING

| | |
|-------------------------|---|
| Rigging | fractional |
| Standing rigging | = Rod rigging - 2018 - Tuned Rigs & Ropes |
| Brand mast | Nordic |
| Material mast | aluminium |
| Spreaders | 2 sets |
| Keel stepped mast | yes |
| Mainsail cover | North Sails with boat name "Estello" |
| Battcars | Ronstan + stainless steel custom entry/exit point for battcars |
| Fully battened mainsail | Quantum Fusion MC6500, 38,43m ² , Carbon/Technora 14000 Dpi, fully battened with 5 Ronstan battens. In excellent condition (year - 2017) |
| Jib | Hagoort Sails ORC/working Jib, Off-shore performance, Dacron 18m ² , - hardly used. In excellent condition - year 2013 |



X-YACHTS X-35 ONE-DESIGN SPECIAL

| | |
|-------------------------|---|
| High aspect | Hagoort Sails Off-Shore performance Maxx Aramide internal taffeta laminate, reinforced cross-cut, roll-battens. In very good condition - year 2012 |
| Genoa | North Sails 3Di Endurance 760/14700Dpi, 105%/31,9m2 with 3 vertical battens. In excellent condition. Year - 2021 |
| Genoa furler | Harken |
| Gennaker | North Sails - Dark Blue + sock. In good condition. |
| Spinnaker | Hagoort Sails Off-Shore performance 0,9oz Nylite nylon, 105m2 full radial cut. Light Blue, Hardly used - in good condition - year 2012 |
| Stormjib | Hagoort Sails Off-Shore performance, 10m2., Cross-Cut, Orange - never used. In excellent condition - year 2013. |
| Reefing System | slabreefing |
| Backstay adjuster | X-Yachts Magic Wheel |
| Boomvang | gasspring |
| Primary sheet winch | 2 x Harken 48 - 2-speed |
| Halyard winches | 2 x self-tailing Harken 40 - Quattro |
| Multifunctional winches | German mainsheet winches 2 x self-tailing Harken 40 - 2-speed |
| Spi-pole | carbon Rocon |
| Extra info | Traveler optimized for operation by helmsman. The boom is slightly shortened, not extending past the steering wheel. Lazy Jacks - new in 2022. Jackstays, webbing. Preventer line for cockpit operation. Slightly reduced main sail area. Is now 38,43 m2 (Original area OD = 40,1m2). Reefing system = hook and slabreefing, optimized for short handed sailing. Higher placed exit of spinnaker halyard. 2 x foldable maststeps. 2x extra cleats at mast. |
| Extra info | Rocon for the furler. Mast bracket with 4 displays has a custom cover made by UK Sails. Main sail, Genoa, Gennaker & High Aspect yearly maintained by North Sails. Also included a spare set of sails (condition poor): North Marathon 3DL 105% Genoa and 3DL X34 High Aspect. Masttrim, halyards, sheets, trim lines dyneema, where necessary. |



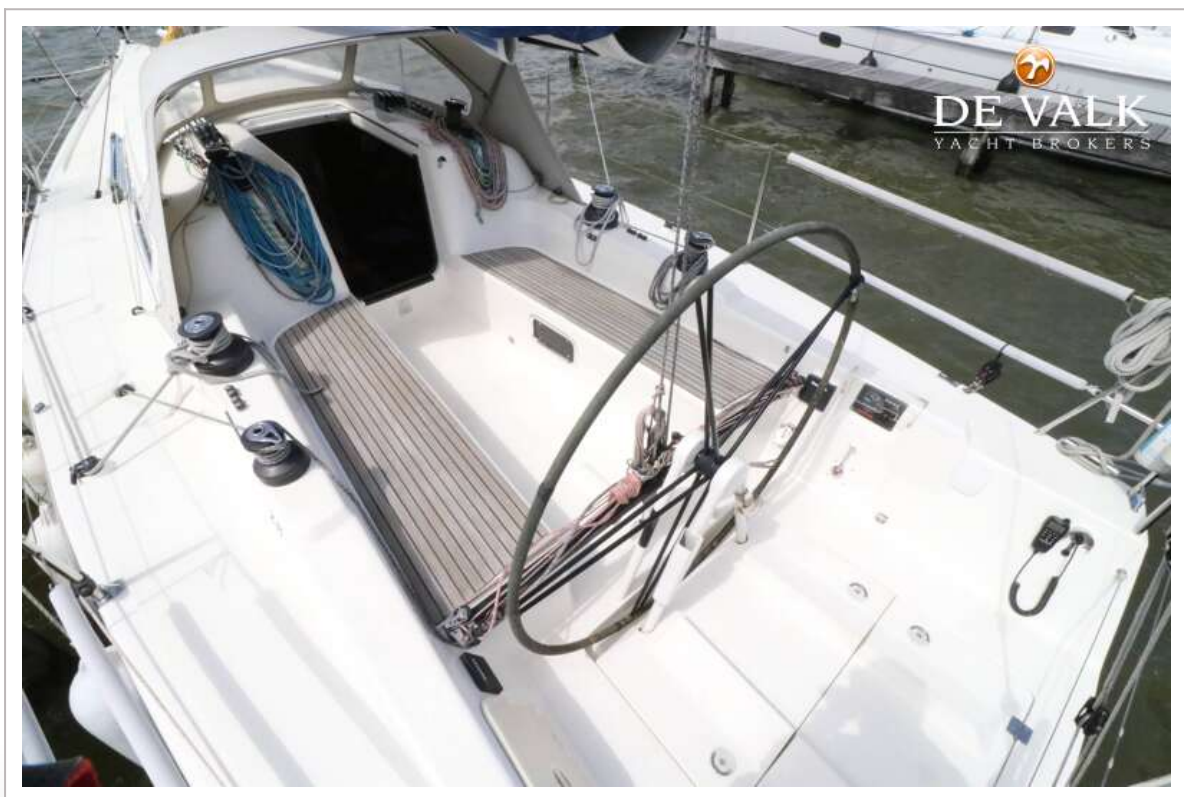
X-YACHTS X-35 ONE-DESIGN SPECIAL



X-YACHTS X-35 ONE-DESIGN SPECIAL



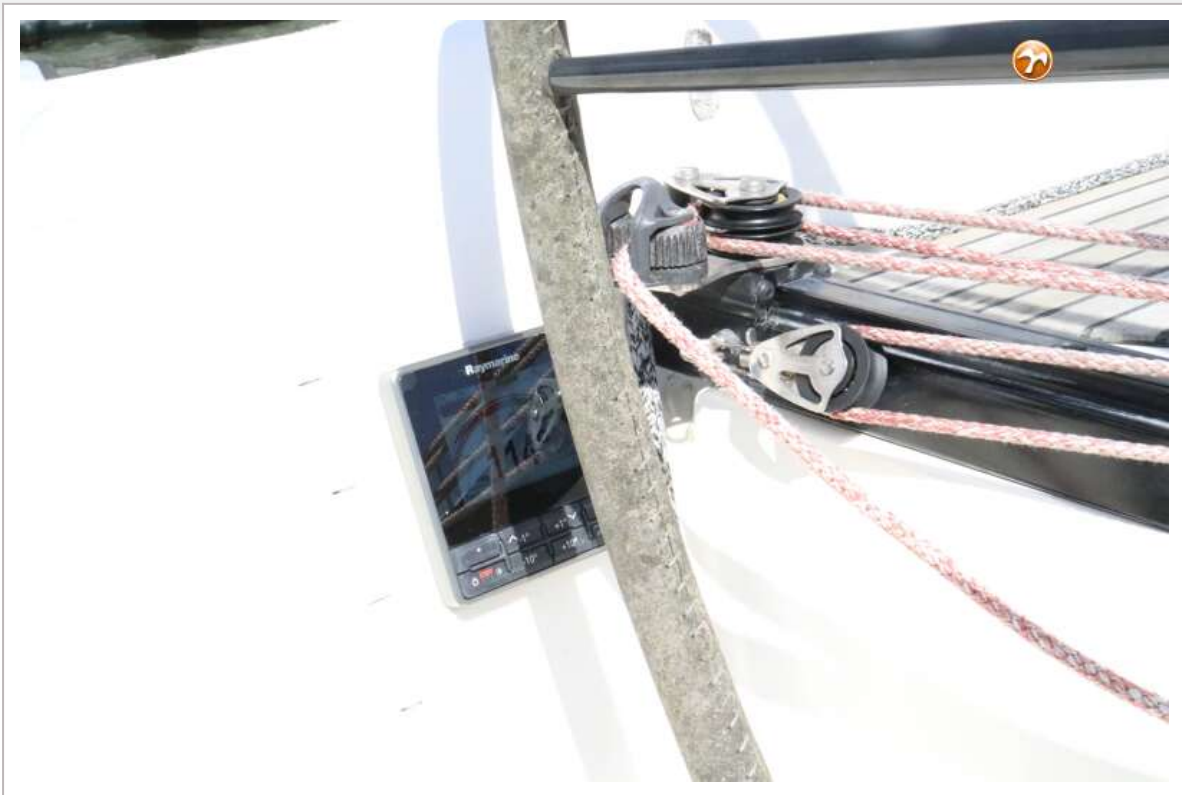
X-YACHTS X-35 ONE-DESIGN SPECIAL



X-YACHTS X-35 ONE-DESIGN SPECIAL



X-YACHTS X-35 ONE-DESIGN SPECIAL



X-YACHTS X-35 ONE-DESIGN SPECIAL



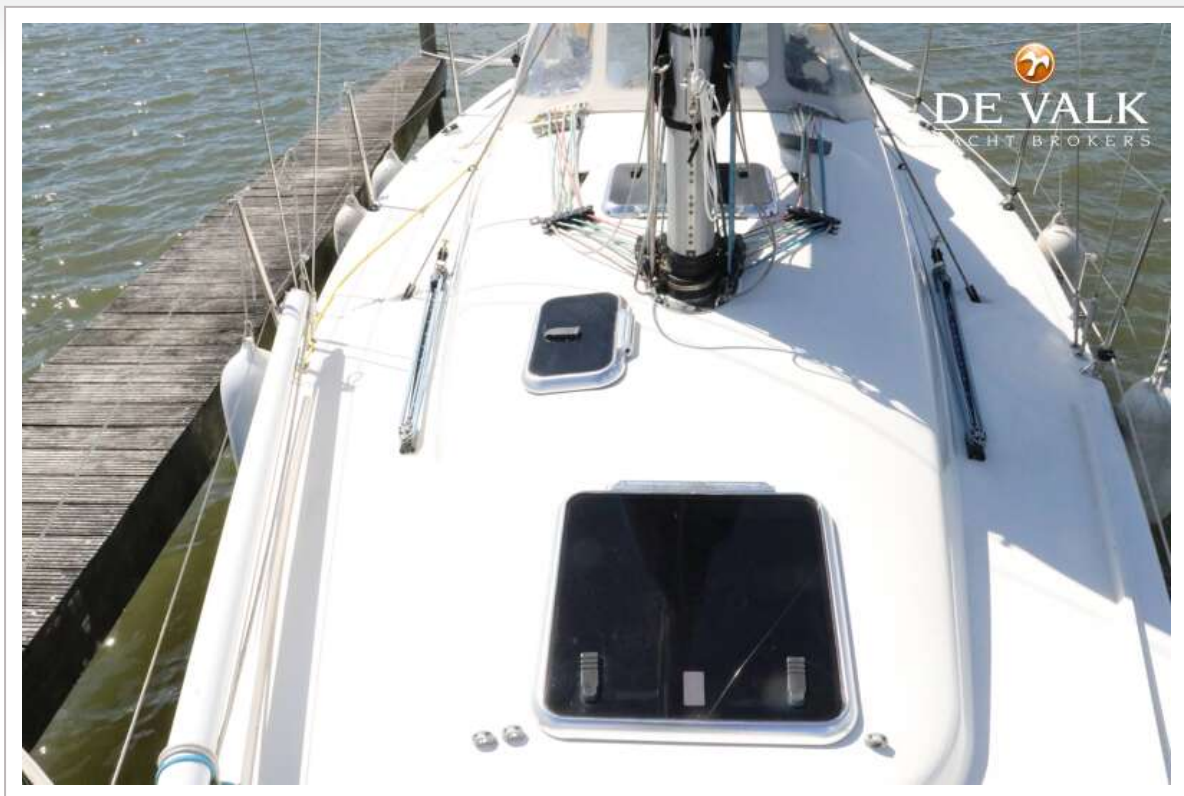
X-YACHTS X-35 ONE-DESIGN SPECIAL



X-YACHTS X-35 ONE-DESIGN SPECIAL



X-YACHTS X-35 ONE-DESIGN SPECIAL



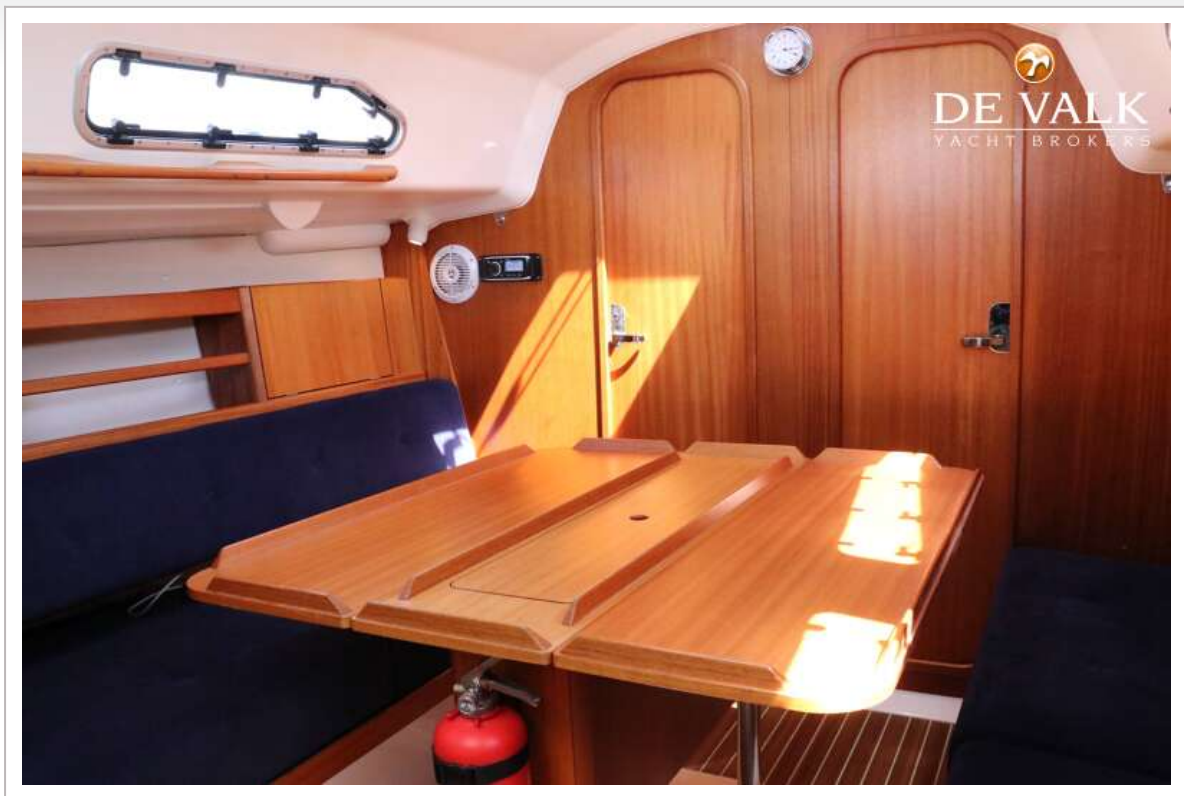
X-YACHTS X-35 ONE-DESIGN SPECIAL



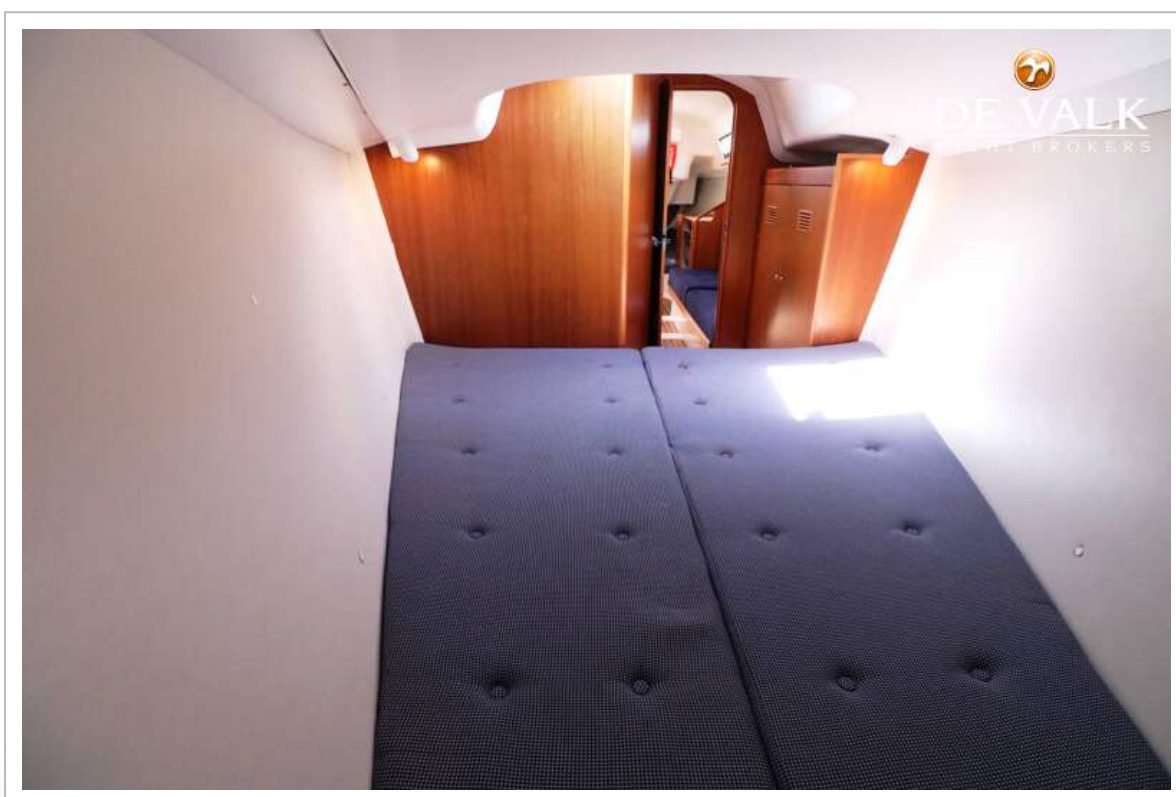
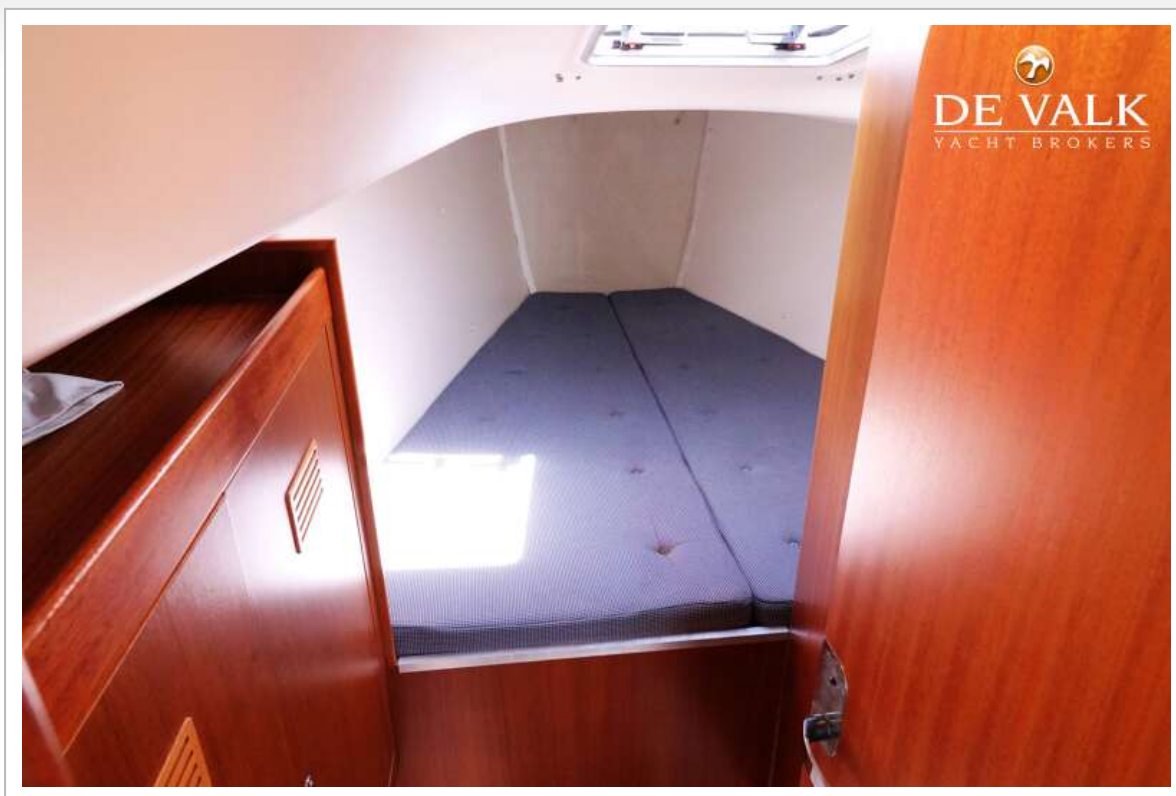
X-YACHTS X-35 ONE-DESIGN SPECIAL



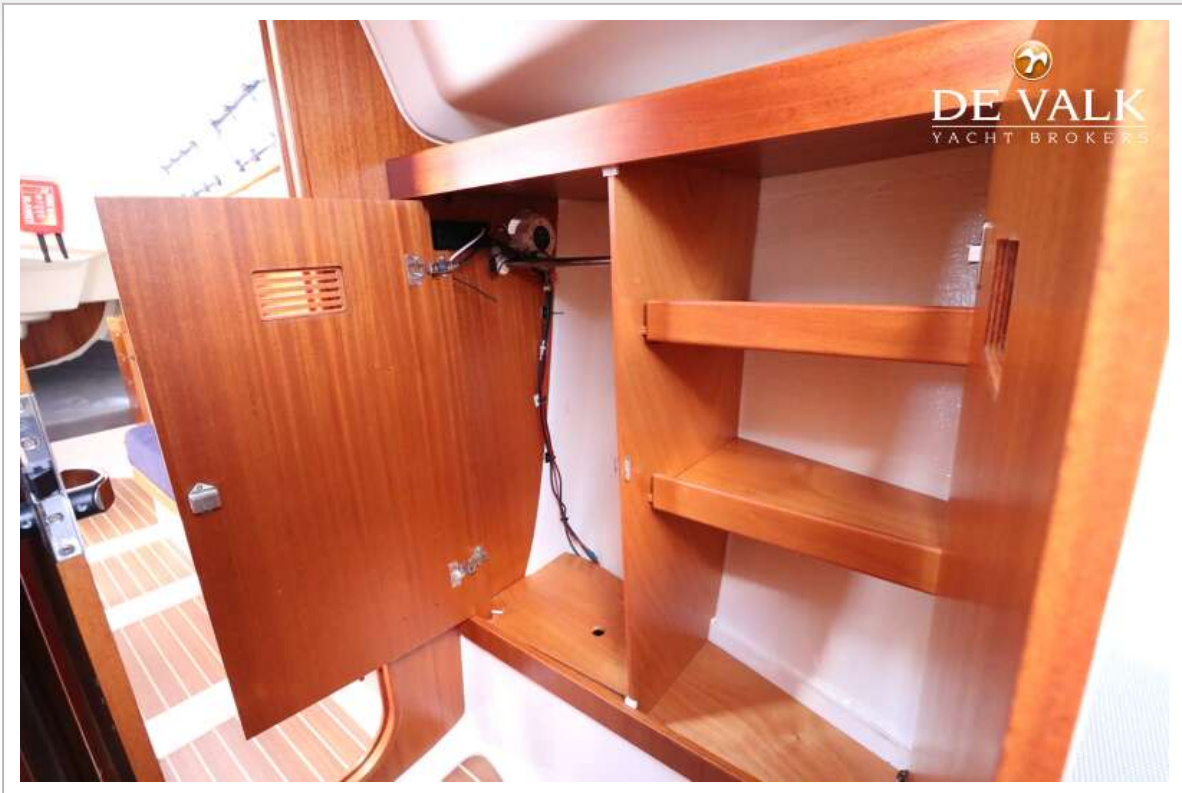
X-YACHTS X-35 ONE-DESIGN SPECIAL



X-YACHTS X-35 ONE-DESIGN SPECIAL



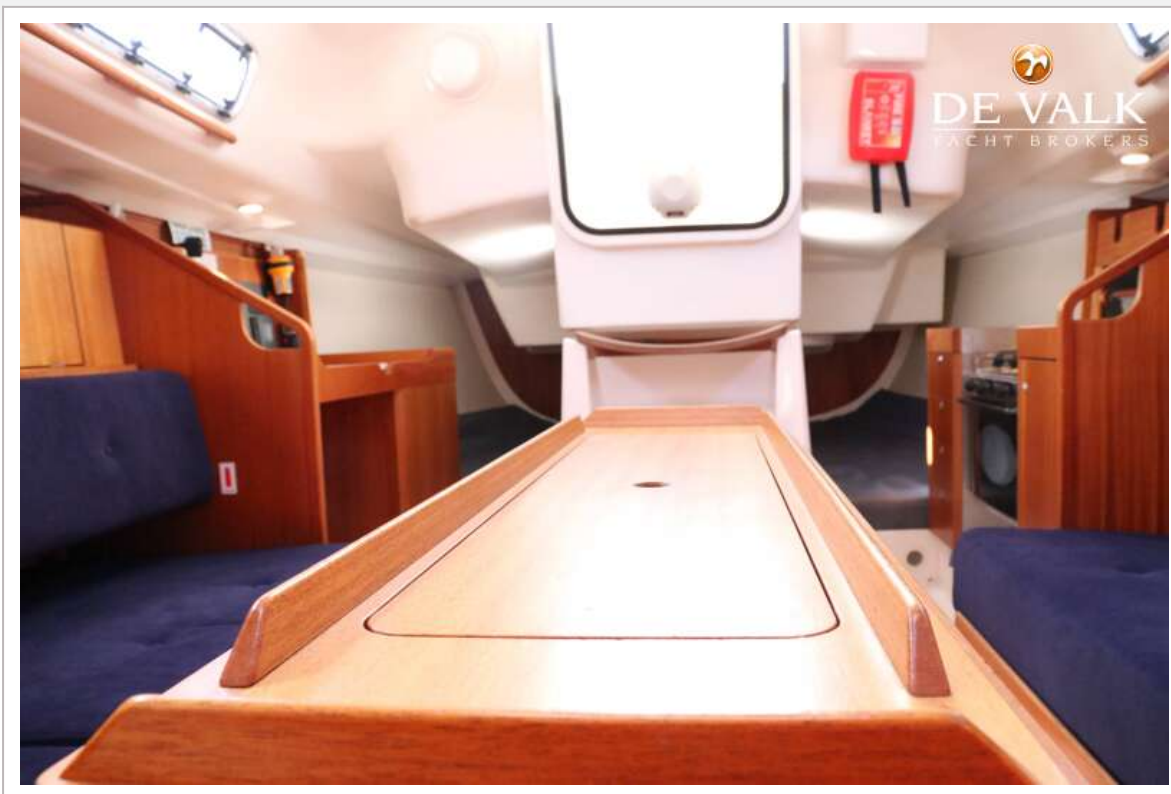
X-YACHTS X-35 ONE-DESIGN SPECIAL



X-YACHTS X-35 ONE-DESIGN SPECIAL



X-YACHTS X-35 ONE-DESIGN SPECIAL



X-YACHTS X-35 ONE-DESIGN SPECIAL



X-YACHTS X-35 ONE-DESIGN SPECIAL



X-YACHTS X-35 ONE-DESIGN SPECIAL



X-YACHTS X-35 ONE-DESIGN SPECIAL



X-YACHTS X-35 ONE-DESIGN SPECIAL



