



DE VALK  
YACHT BROKERS



## BESTEWIND 50 PILOTHOUSE



DE VALK  
YACHT BROKERS

# BESTEWIND 50 PILOTHOUSE

## BROKER'S COMMENTS

This Bestewind 50 Pilothouse is hull number 8 and offers you the best in this exclusive range. All hints & tips from the earlier builds together with the extensive cruising experience from het first and only owner, have been incorporated in her detailed build characteristics. With the use of modern materials really low maintenance and uncomplicated to operate. No complicated systems. With her deeper draft and taller rig, she performs better. Sailing with the benefit of a pilothouse is a great enjoy.

*Marc Weijenberg*

## SPECIFICATIONS

<b>Dimensions</b>	14.97 x 4.40 x 2.50 (m)	<b>Builder</b>	K&M Yachtbuilders
<b>Built</b>	2013	<b>Cabins</b>	3
<b>Material</b>	GRP	<b>Berths</b>	8
<b>Engine(s)</b>	1 x Yanmar 4JH4-HTE diesel	<b>Hp/Kw</b>	110.00 (hp), 80.85 (kw)
<b>Asking price</b>	sold (VAT )	<b>Lying</b>	elsewhere / Not at sales office

## CONTACT

<b>Sales office</b>	De Valk Sint Annaland	<b>Telephone</b>	+31 166 601 000
<b>Address</b>	Koelhuisweg 4 4697 RM Sint Annaland The Netherlands	<b>E-mail</b>	sintannaland@devalk.nl

## DISCLAIMER

These particulars are given in good faith as supplied but cannot be guaranteed.



# BESTEWIND 50 PILOTHOUSE

## GENERAL

<b>Model</b>	BESTEWIND 50 PILOTHOUSE
<b>Type</b>	sailing yacht
<b>LOA (m)</b>	14,97
<b>LWL (m)</b>	13,72
<b>Beam (m)</b>	4,40
<b>Draft (m)</b>	2,50
<b>Air draft (m)</b>	23,00
<b>Headroom (m)</b>	1,94
<b>Year built</b>	2013
<b>Builder</b>	K&M Yachtbuilders
<b>Country</b>	The Netherlands
<b>Designer</b>	Gerard Dijkstra & Partners
<b>Displacement (t)</b>	16
<b>Ballast (tonnes)</b>	lead 7
<b>CE norm</b>	A
<b>Hull material</b>	GRP
<b>Hull colour</b>	white
<b>Hull shape</b>	round-bilged
<b>Keel type</b>	fin keel with bulb
<b>Superstructure material</b>	GRP
<b>Rubbing strake</b>	stainless steel
<b>Deck material</b>	GRP
<b>Deck finish</b>	Esthec composite teak-like decking
<b>Cockpit deck finish</b>	Esthec composite teak-like decking
<b>Antifouling (year)</b>	2020-2021
<b>Dorades</b>	4 x
<b>Window frame</b>	aluminium
<b>Window material</b>	double glazing Pilothouse (2019)
<b>Deckhatch</b>	7 x Lewmar
<b>Portholes</b>	



# BESTEWIND 50 PILOTHOUSE

<b>Insulation</b>	airfoil Hull sandwich core
<b>Radar arch</b>	Carbon antenna-pole aft
<b>Fuel tank (litre)</b>	polyethylene 420
<b>Fuel tank 2 (litre)</b>	200 (not in use)
<b>Fuel daytank (litre)</b>	aluminium 80
<b>Freshwater tank (litre)</b>	polyethylene 420 (in two tanks) + 50
<b>Blackwater tank (litre)</b>	polyethylene 2 x 60
<b>Blackwater tank extraction</b>	deck extraction + uw line
<b>Wheel steering</b>	Jefa RP100 with self adjusting rudder bearings
<b>Inside helm position</b>	Via autopilot
<b>Emergency tiller</b>	yes
<b>More info on hull</b>	3 x Epoxy coating + Coppercoat antifouling
<b>Extra info</b>	Stainless bow-strip for protection Stainless bow fitting
<b>Extra info</b>	Watertight bulkhead forward

## ACCOMMODATION

<b>Cabins</b>	3
<b>Berths</b>	8
<b>Interior</b>	Mahogany with light panelling
<b>Floor</b>	Maple/Esdoorn
<b>Pilot house</b>	With twin sofas (for 4 persons) and navigation area
<b>Headroom saloon (m)</b>	1,94-1,97
<b>Heating</b>	diesel ducted hot air Webasto Airtop 5kW with vents in every cabin, recently serviced.
<b>Chart table</b>	In pilothouse
<b>Dinette</b>	U-shaped with large folding-open table top
<b>Dinette to convert into berth</b>	2 x 1,95-0,60 mtr (single beds)
<b>Sliding door to cockpit</b>	Lower-in floor style door
<b>Galley</b>	U-shaped
<b>Countertop</b>	corian
<b>Sink</b>	stainless steel 2 x



# BESTEWIND 50 PILOTHOUSE

<b>Cooker</b>	Force 10, three burner stove, with remote shut-of valve
<b>Oven</b>	Force 10
<b>Microwave/oven combi</b>	Samsung (220v)
<b>Fridge</b>	Isotherm 12v, 130 ltrs
<b>Freezer</b>	Isotherm 12v, 40 ltrs
<b>Hot water system</b>	220V + engine Boyler (50 ltrs)
<b>Water pressure system</b>	electrical
<b>Owners cabin</b>	double bed Forward / voor / vorn
<b>Bed length (m)</b>	2,05 x 2,10 (bigger than standard)
<b>Wardrobe</b>	hanging/drawers/shelves
<b>Bathroom</b>	en suite I
<b>Toilet</b>	en suite
<b>Toilet system</b>	manual Rheinstrom
<b>Wash basin</b>	in the bathroom Corian
<b>Shower</b>	en suite
<b>Guest cabin 1</b>	double bed
<b>Bed length (m)</b>	2,03 x 1,30
<b>Wardrobe</b>	hanging and shelves
<b>Bathroom</b>	shared II
<b>Toilet</b>	
<b>Toilet system</b>	manual Rheinstrom
<b>Wash basin</b>	Corian
<b>Shower</b>	shared
<b>Guest cabin 2</b>	double bed
<b>Bed length (m)</b>	2,03 x 1,30
<b>Wardrobe</b>	hanging and shelves

## MACHINERY

<b>No of engines</b>	1
<b>Make</b>	Yanmar
<b>Type</b>	4JH4-HTE



# BESTEWIND 50 PILOTHOUSE

<b>HP</b>	110
<b>kW</b>	80,85
<b>Fuel</b>	diesel
<b>Year installed</b>	2013
<b>Maximum speed (kn)</b>	9
<b>Cruising speed (kn)</b>	7
<b>Consumption (l/hr)</b>	4,5
<b>Engine hours</b>	1350
<b>Engine cooling system</b>	freshwater heat exchanger
<b>Drive</b>	shaft
<b>Shaft seal</b>	Volvo Penta seal (2018)
<b>Engine controls</b>	bowden cable
<b>Gearbox</b>	Yanmar
<b>Bowthruster</b>	Sidepower, operated by foot-switches
<b>Exhaust</b>	watercooled
<b>Thrust bearing</b>	Aquadrive for silent running
<b>Propeller type</b>	folding Gori
<b>Propeller blades</b>	3
<b>Propeller shaft material</b>	stainless steel
<b>Shaft lubrication</b>	water
<b>Manual bilge pump</b>	2 x
<b>Electric bilge pump</b>	3 x
<b>Electrical installation</b>	12/220v
<b>Generator</b>	No, but ample place under cockpit floor
<b>Start battery</b>	1 x 70ah (2017)
<b>Service battery</b>	4 x 200ah Gel (2017/2020)
<b>Battery monitor</b>	Mastervolt View
<b>Battery charger/inverter</b>	Mastervolt 12v-100amp/220v- 2500watt
<b>Wind generator</b>	Watt-Seawind 12v
<b>Shorepower</b>	with cable
<b>Watermaker</b>	Hydrovane 260 (49ltr/hr) not used
<b>Extra info</b>	Twin fuel filter system Rope Cutter on propshaft



# BESTEWIND 50 PILOTHOUSE

## Extra info

Engine-room access from top, front and back.

## NAVIGATION

### Compass

Plastimo Olympic 135

### Electric compass

Via autopilot

### Depth sounder

Raymarine I70

### Log

Raymarine I70

### Windset

Raymarine I70

### Repeater

Raymarine I70

### VHF

Raymarine E240 + cockpit connection and speaker

### VHF handheld

Icom

### Autopilot

Raymarine P70 + SPX core-pack + Jefa drive

### Rudder angle indicator

Via autopilot

### Radar

Raymarine RD418D digital

### GPS

Raymarine

### Plotter

Raymarine Hybrid E125 in pilothouse (visible from cockpit)

### Navtex

Navtex NX digital receiver

### Electronic chart(s)

yes

### AIS transponder

Raymarine 600

### EPIRB

yes

### Navigation lights

LED + 3-color masthead light

### Extra info

Sea-me antenna

## EQUIPMENT

### Bimini

yes

### Cockpit table

Folding (teak)

### Bathing platform

yes

### Boarding ladder

stainless steel

### Transom door

yes

### Deck shower

Hot + cold

### Anchor

Rocna



# BESTEWIND 50 PILOTHOUSE

Windlass	Lewmar V4
Capstan	Lewmar
Outboard support	yes
Davits	Stainless steel (removable)
Sea railing	wire
Grab rail (superstructure)	stainless steel
Railing side opening gates	2 x
Pushpit	yes
Pulpit	yes
Life raft	valise (or bag) (2018)
Life raft (pers)	6
Last life raft survey	2020/2021
Lifejackets	yes
Lifebuoy	yes
Fenders	yes
Mooring lines	yes
TV	LED 26" on lift in salon
TV receiver	DVBT antenna
Radio-cd player	Fusion
Cockpit speakers	yes
Speakers in salon	yes
Clock - barometer	yes
Fire extinguisher	(2018) + fire blankets

## RIGGING

Rigging	sloop-cutter
Standing rigging	(2013, checked 2018)
Brand mast	Seldén
Material mast	aluminium
Spreaders	Triple set
Keel stepped mast	yes





# BESTEWIND 50 PILOTHOUSE

<b>Mainsail cover</b>	With Lazy Jacks
<b>Battcars</b>	yes
<b>Fully battened mainsail</b>	Wittevrongel 72m2 (2013), 2 reefs
<b>High aspect</b>	Wittevrongel 49m2 (2013)
<b>Genoa</b>	Wittevrongel 77m2 (2013)
<b>Genoa furler</b>	Furlex 400
<b>Genoa cover</b>	yes
<b>Staysail furler</b>	Furlex 300
<b>Reefing System</b>	quick-one-line-reefing From cockpit
<b>Backstay adjuster</b>	hydraulic Navtec
<b>Boomvang</b>	Selden Rodkicker vang
<b>Primary sheet winch</b>	2 x Lewmar 65CEST Evo electric
<b>Halyard winches</b>	2 x Lewmar 55CEST Evo electric
<b>Multifunctional winches</b>	2 x Lewmar mainsheet winches
<b>Spi-pole</b>	carbon Selden
<b>Extra info</b>	Dye-one backstays for heavy duty sailing Lewmar deck hardware



# BESTEWIND 50 PILOTHOUSE



# BESTEWIND 50 PILOTHOUSE

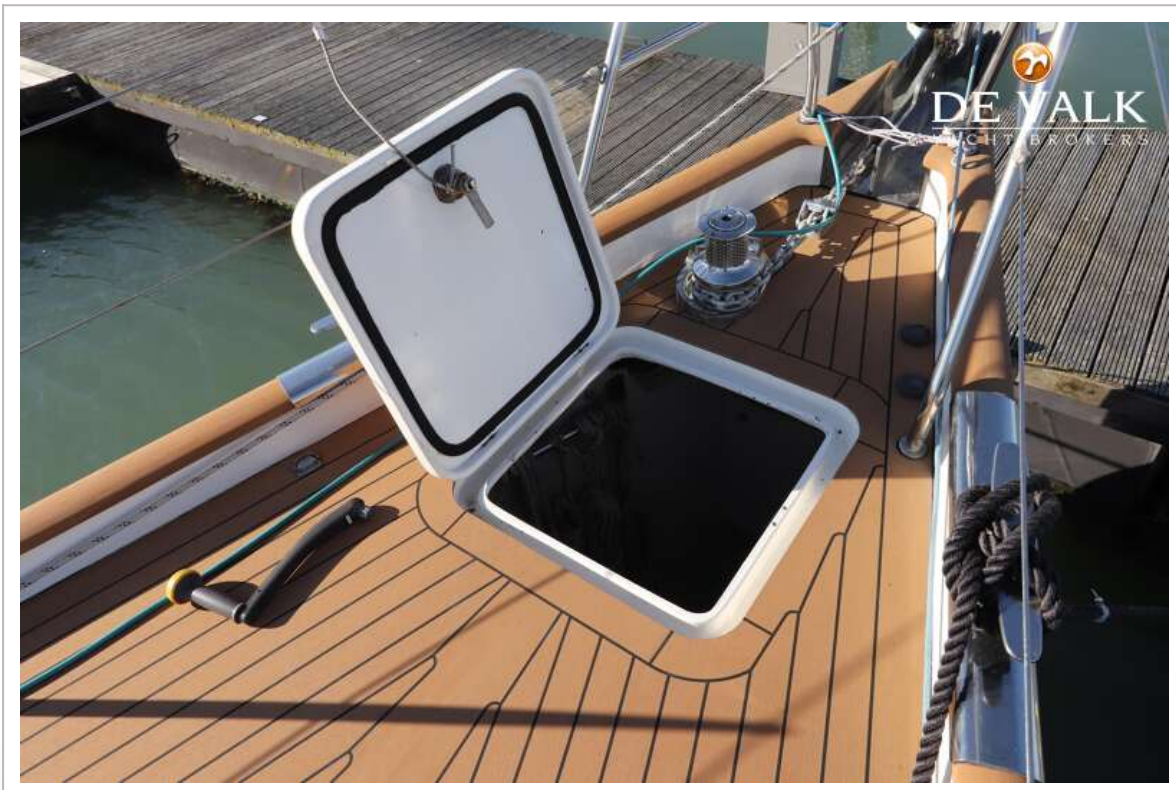
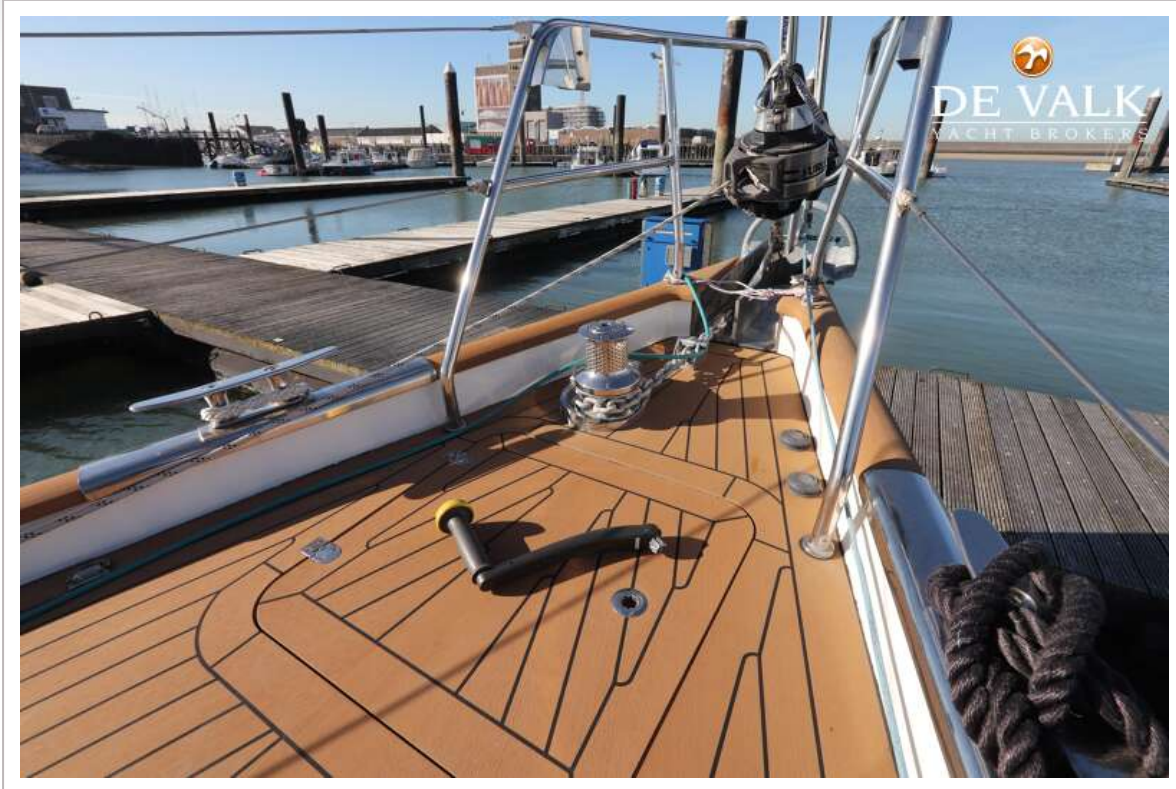




# BESTEWIND 50 PILOTHOUSE

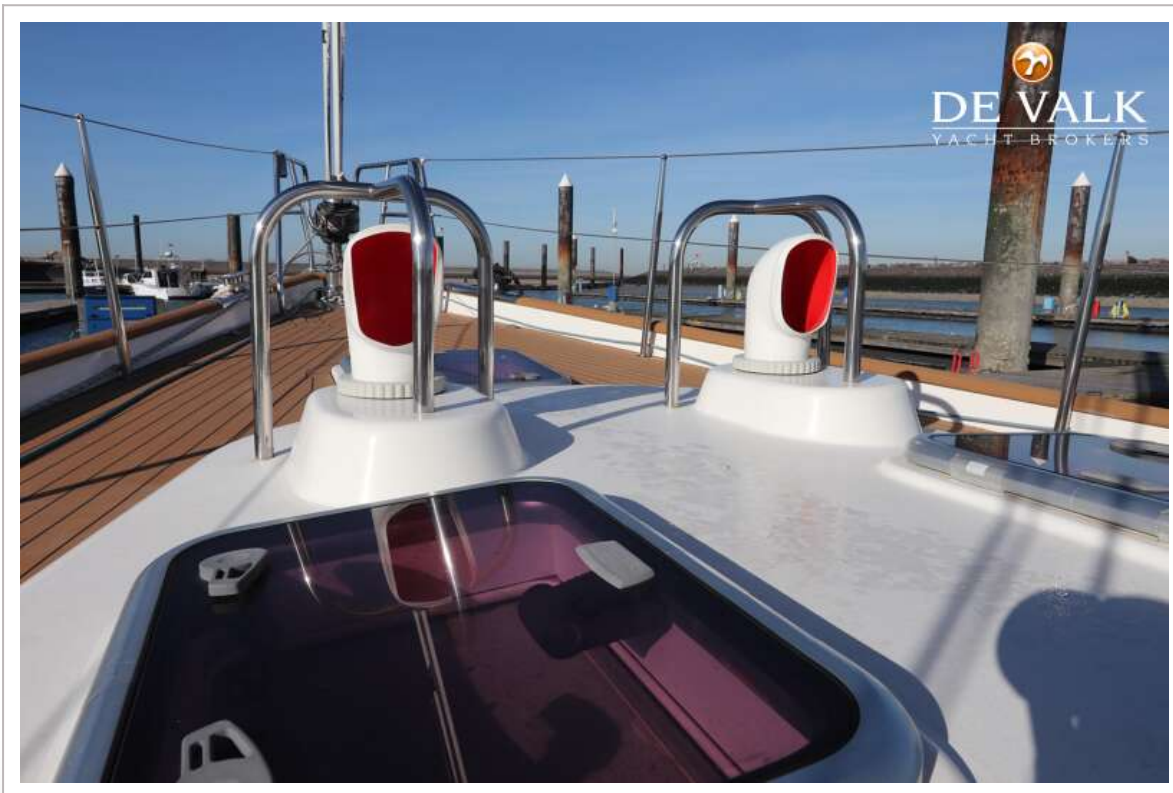


# BESTEWIND 50 PILOTHOUSE

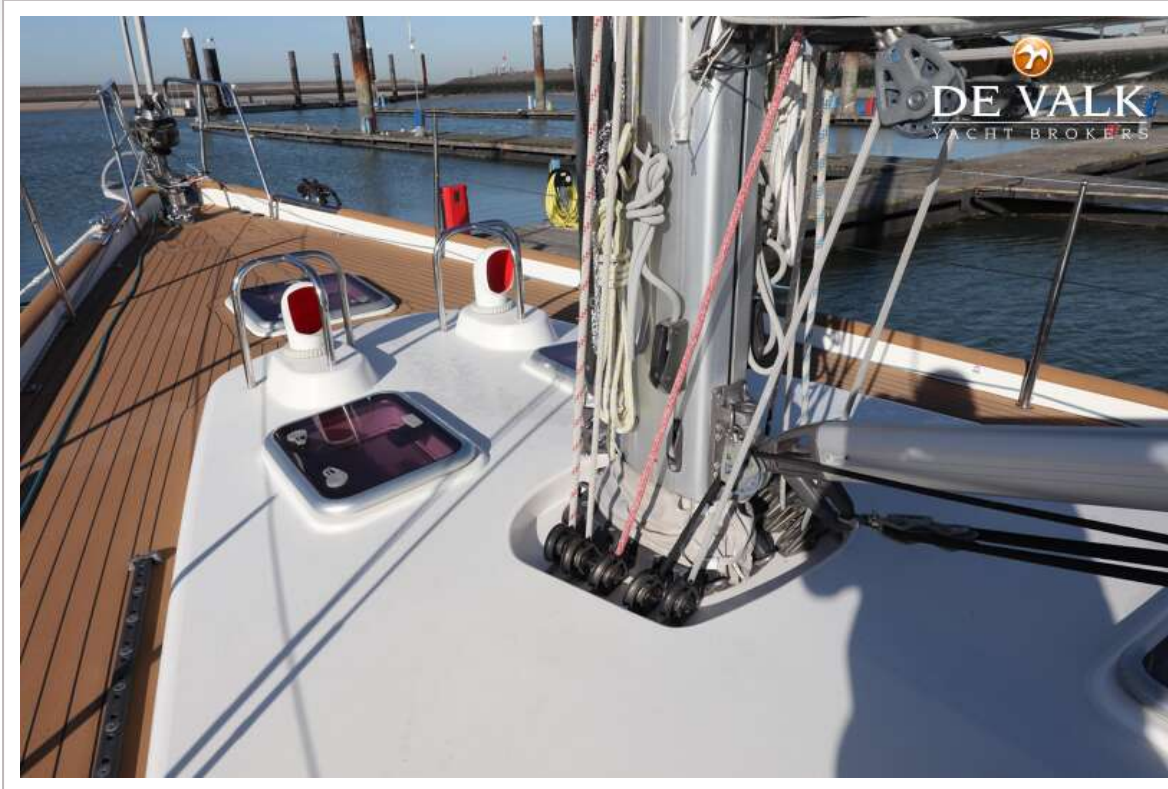




# BESTEWIND 50 PILOTHOUSE

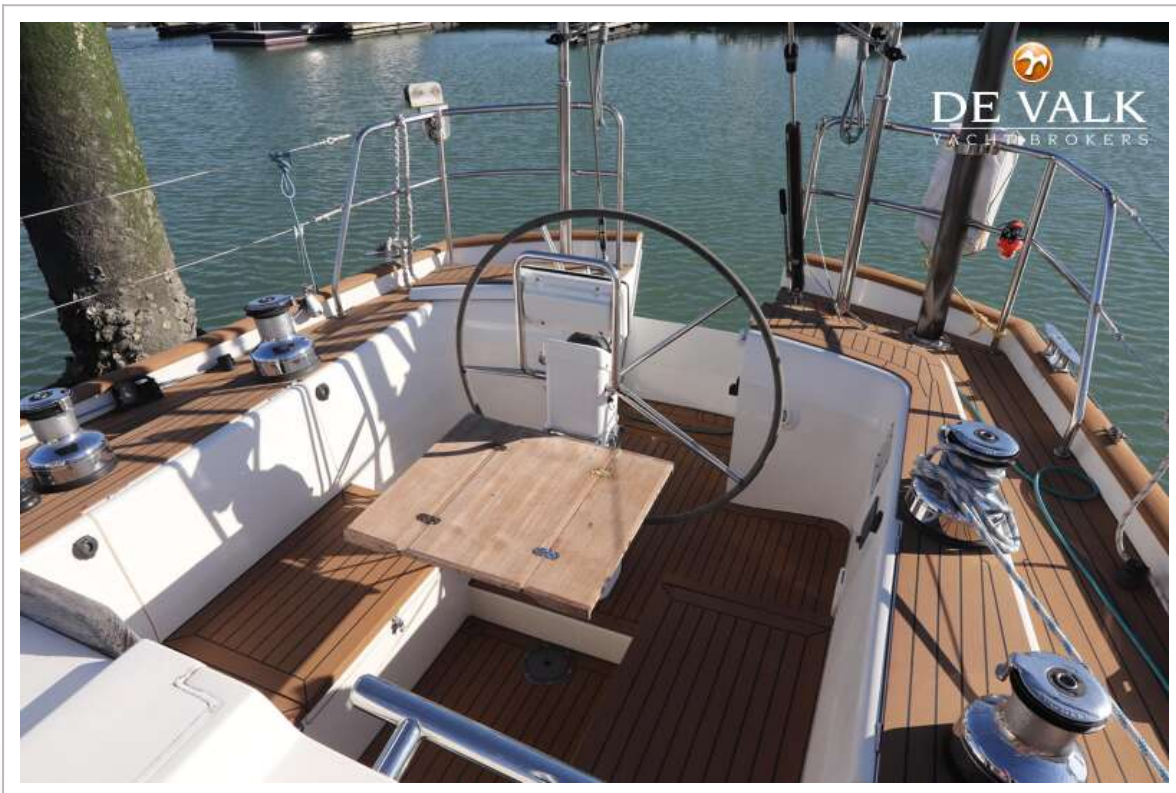


# BESTEWIND 50 PILOTHOUSE



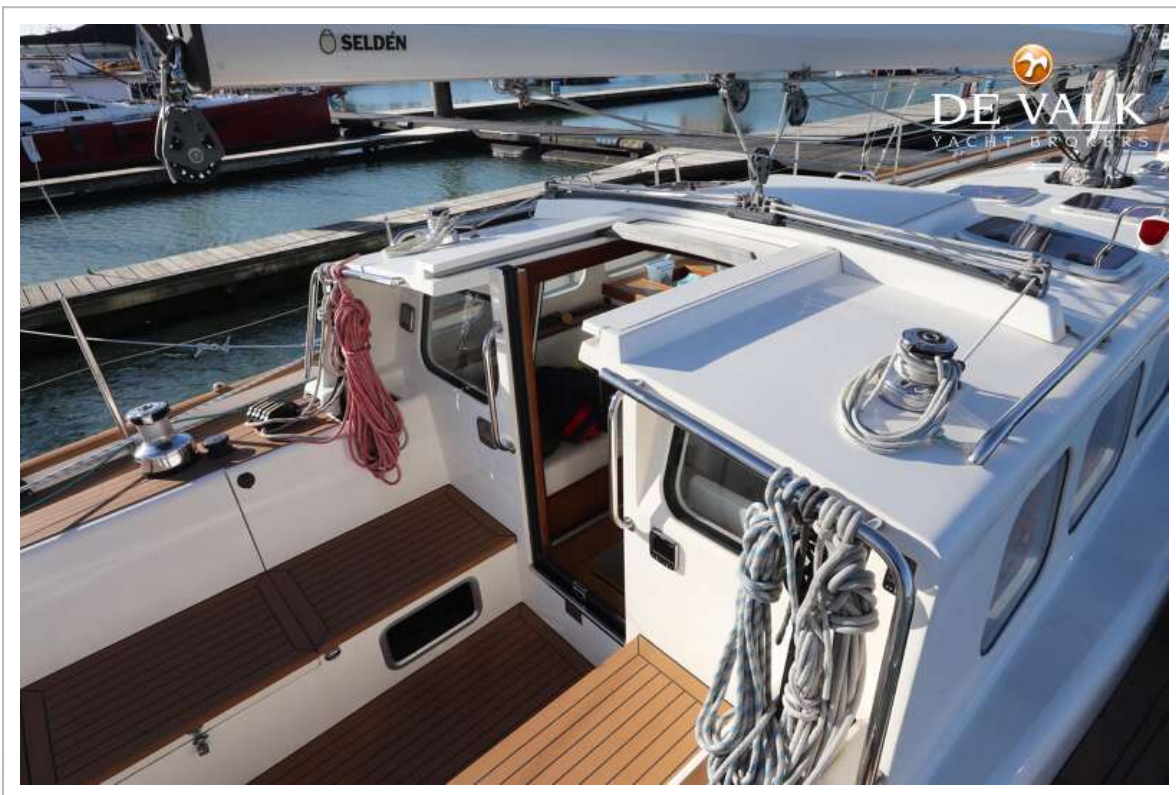
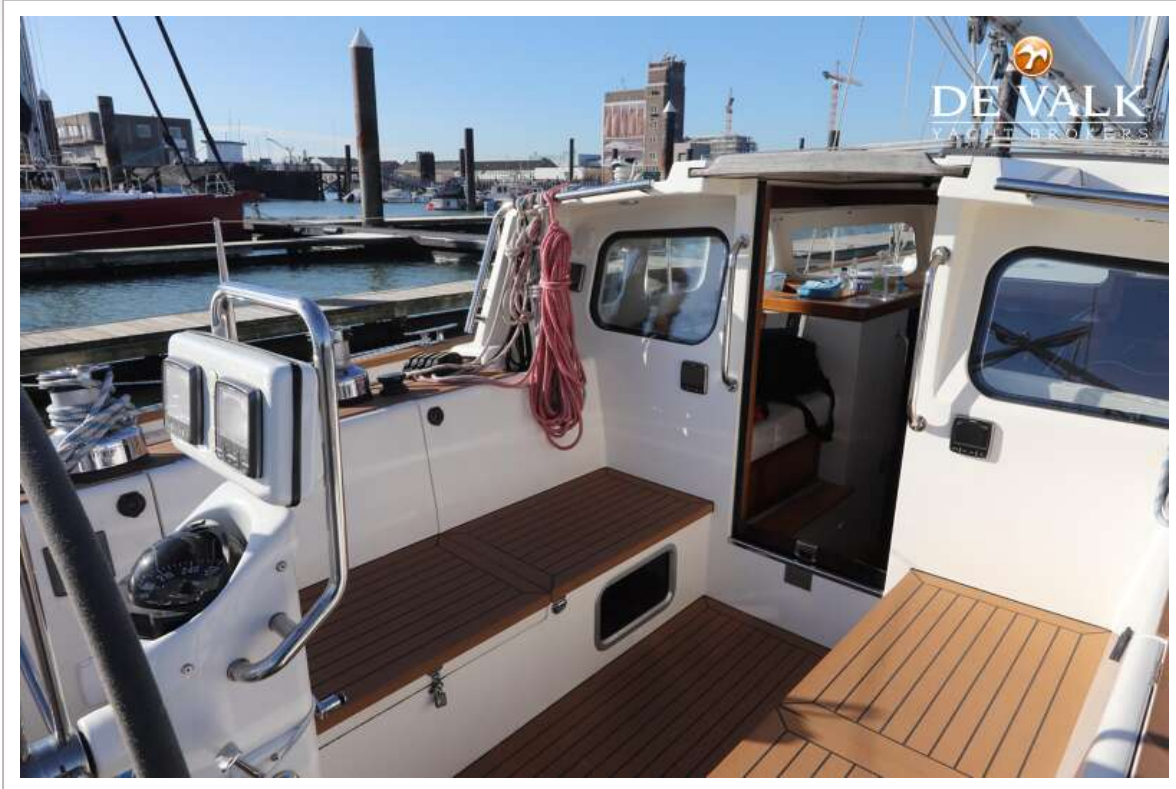


# BESTEWIND 50 PILOTHOUSE



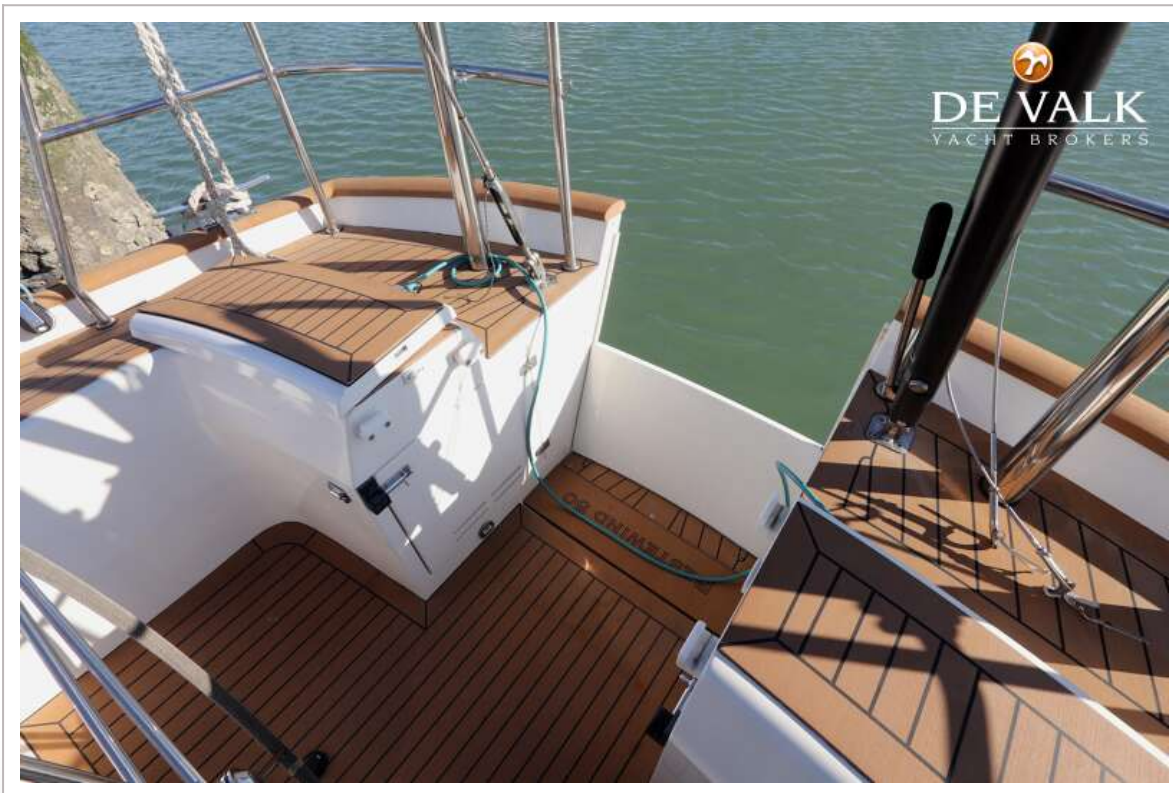


# BESTEWIND 50 PILOTHOUSE

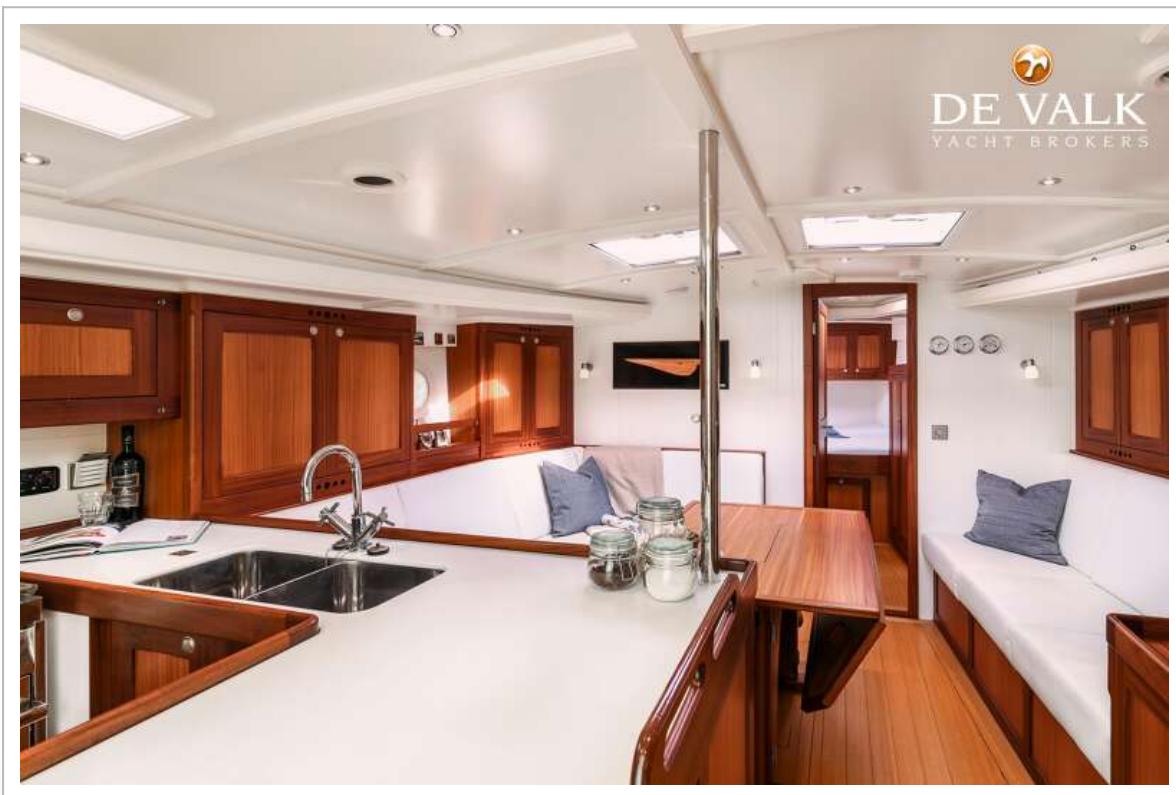




# BESTEWIND 50 PILOTHOUSE



# BESTEWIND 50 PILOTHOUSE





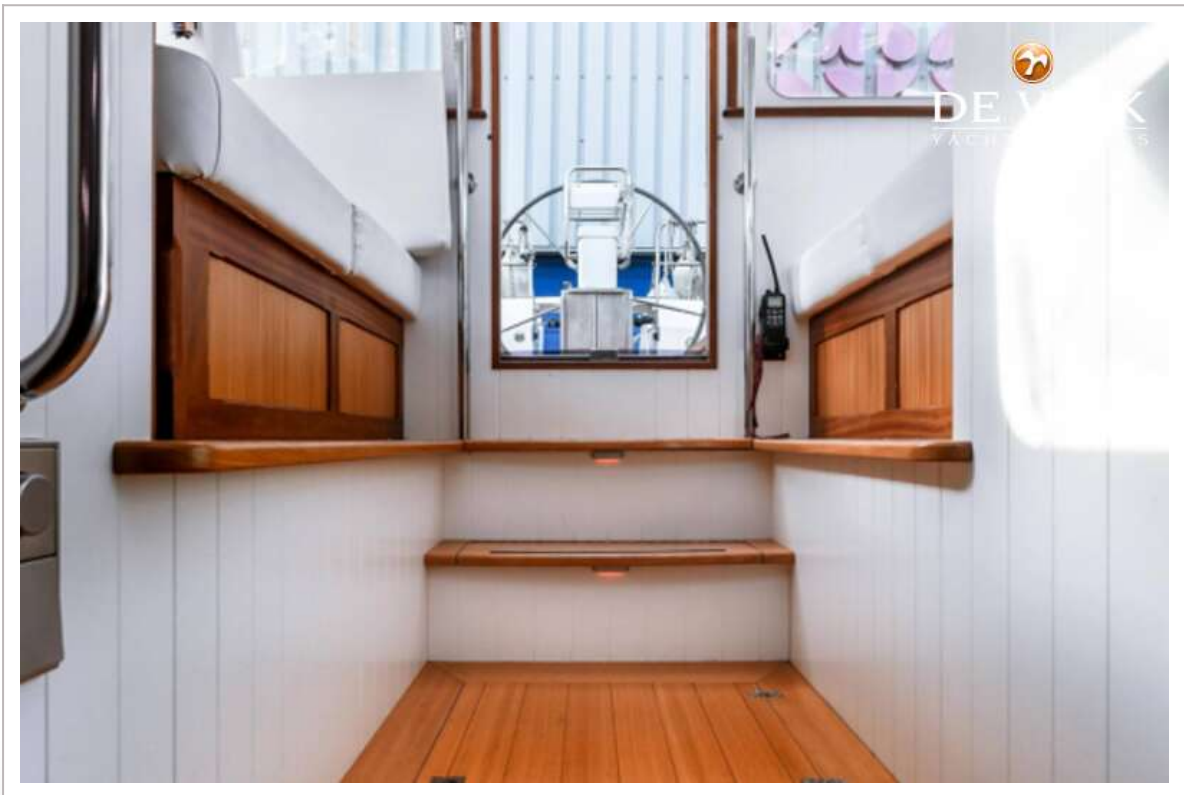
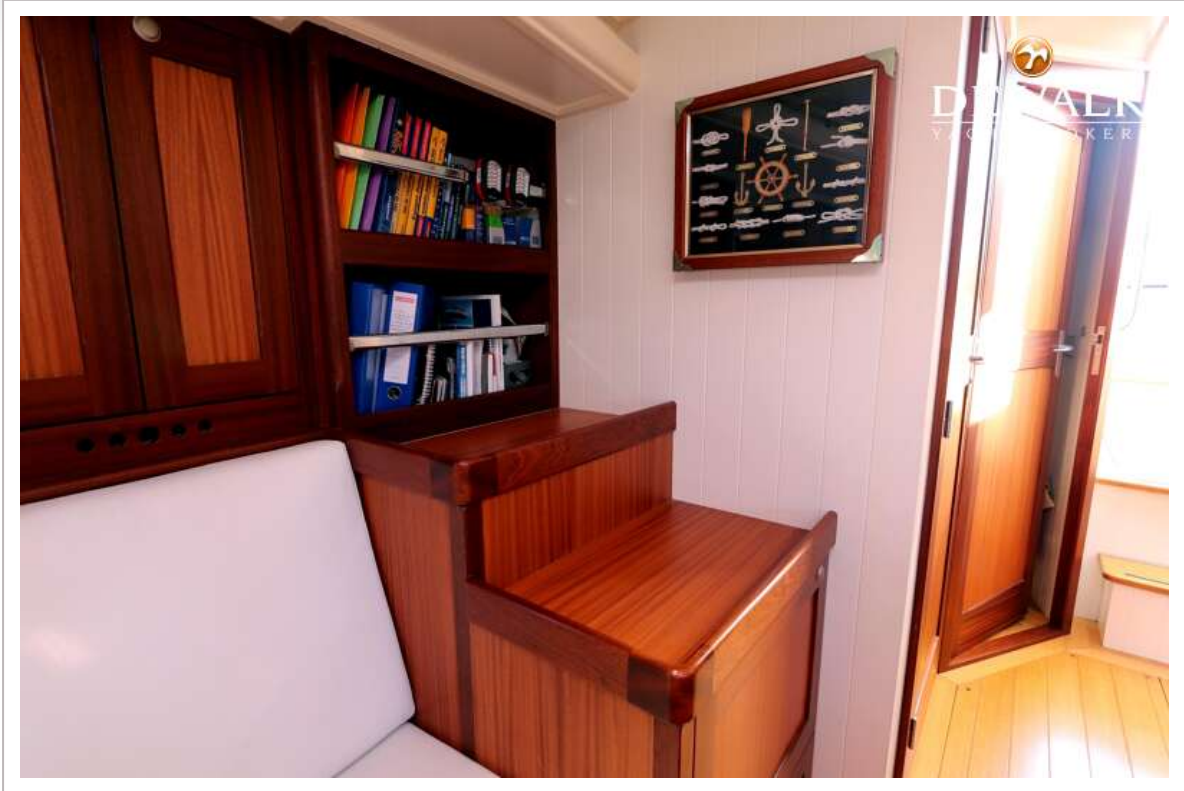
# BESTEWIND 50 PILOTHOUSE



# BESTEWIND 50 PILOTHOUSE



# BESTEWIND 50 PILOTHOUSE

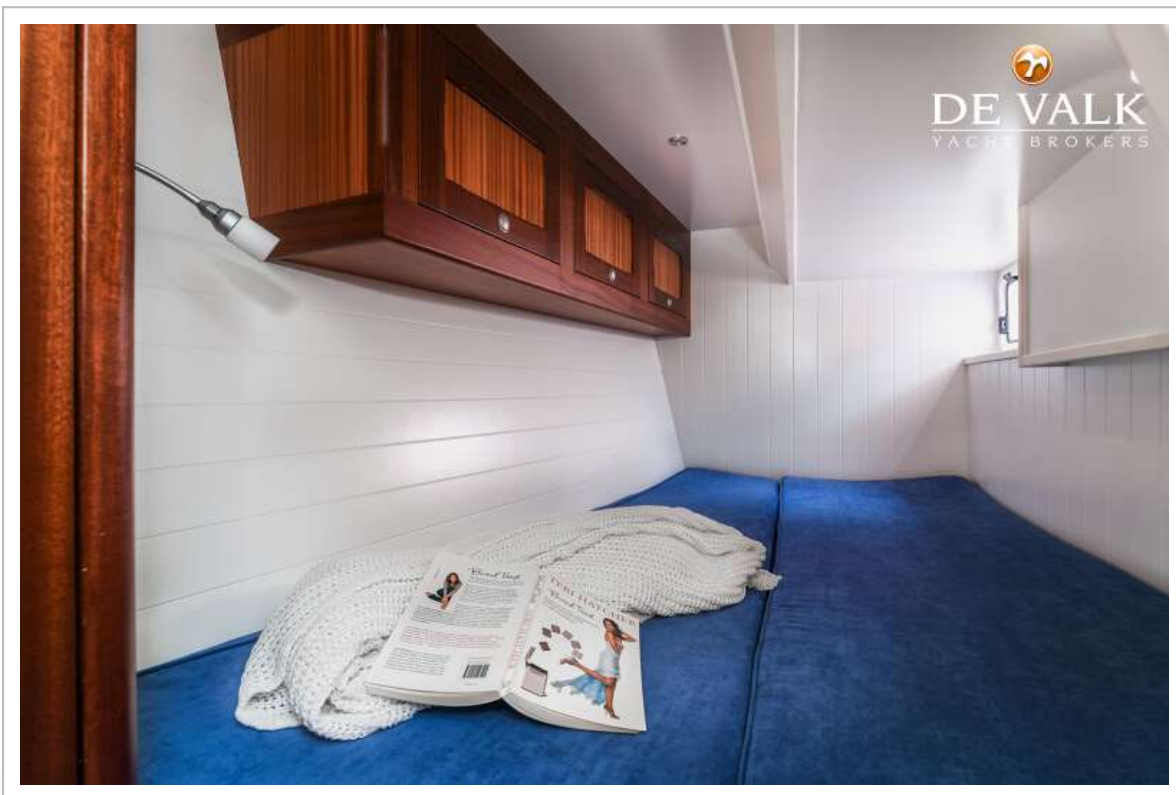
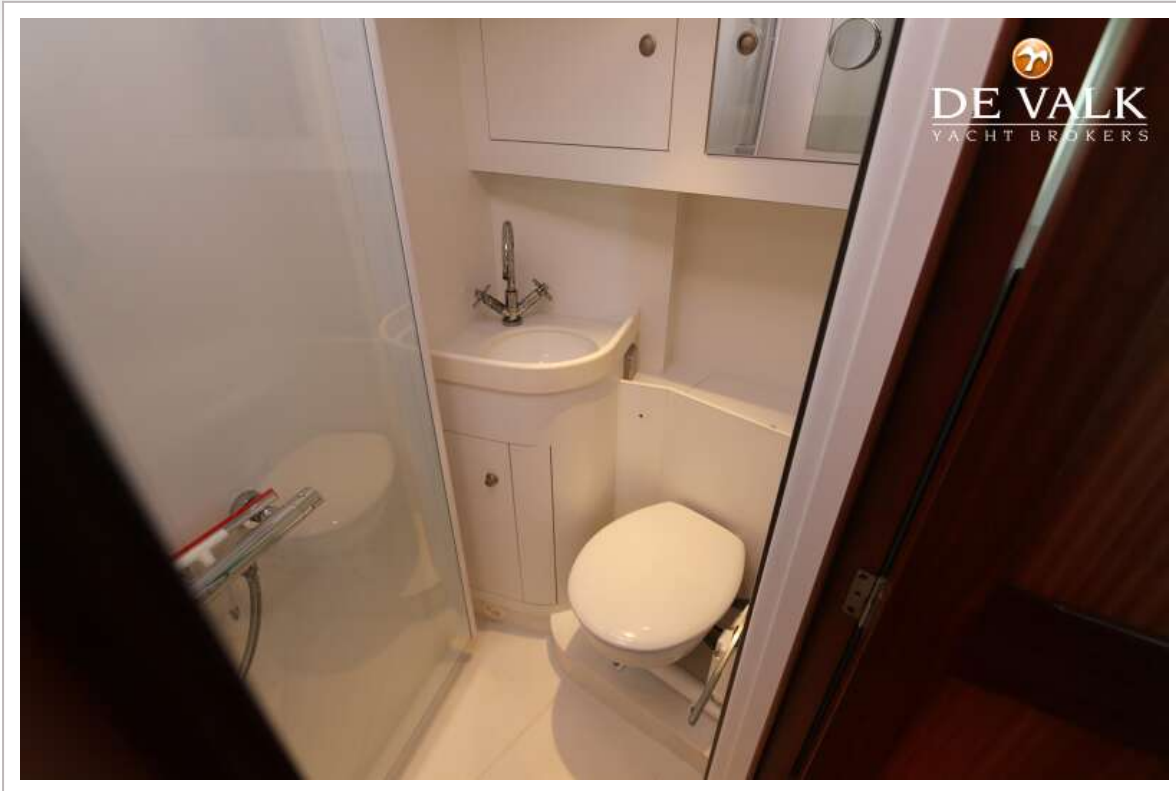




# BESTEWIND 50 PILOTHOUSE

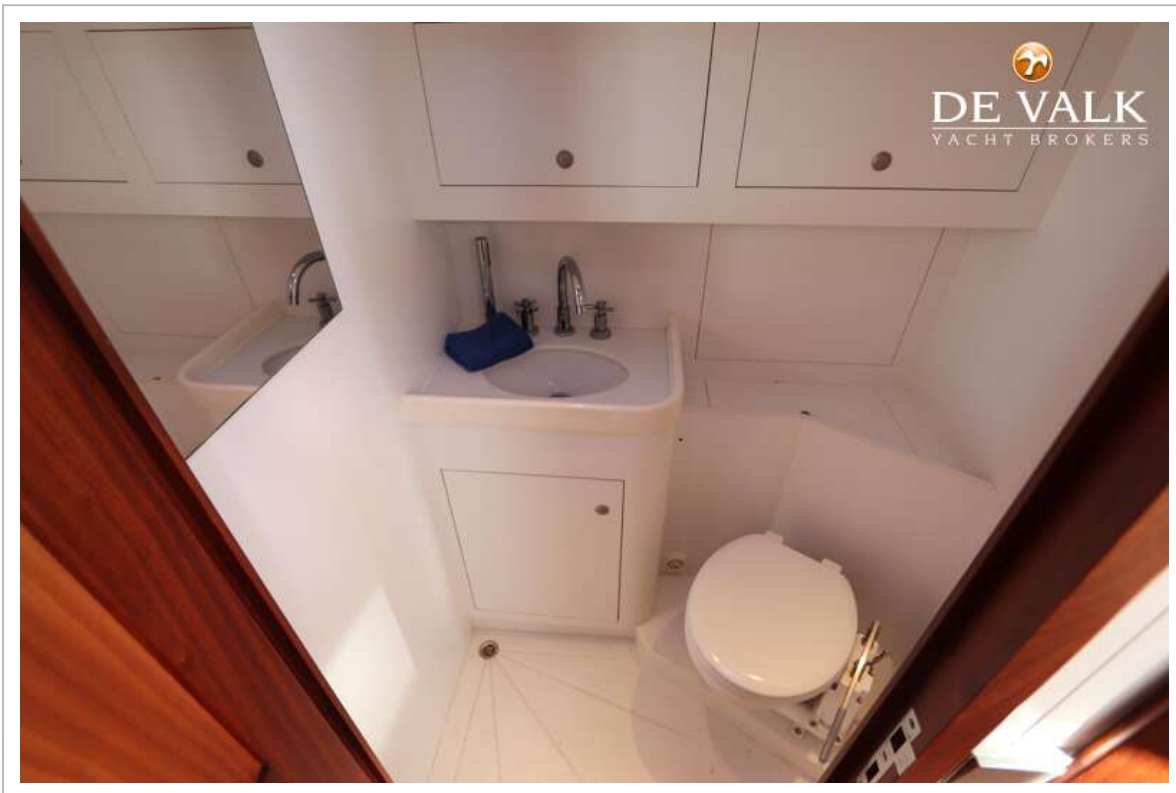
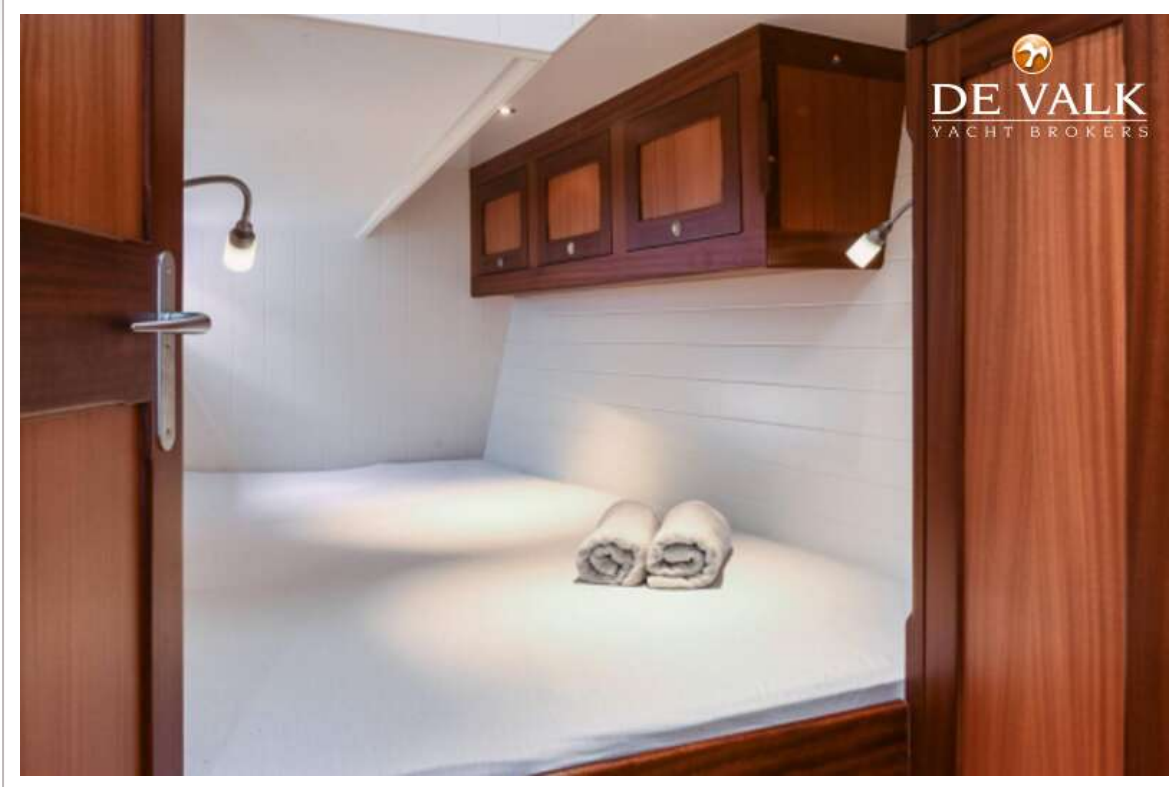


# BESTEWIND 50 PILOTHOUSE

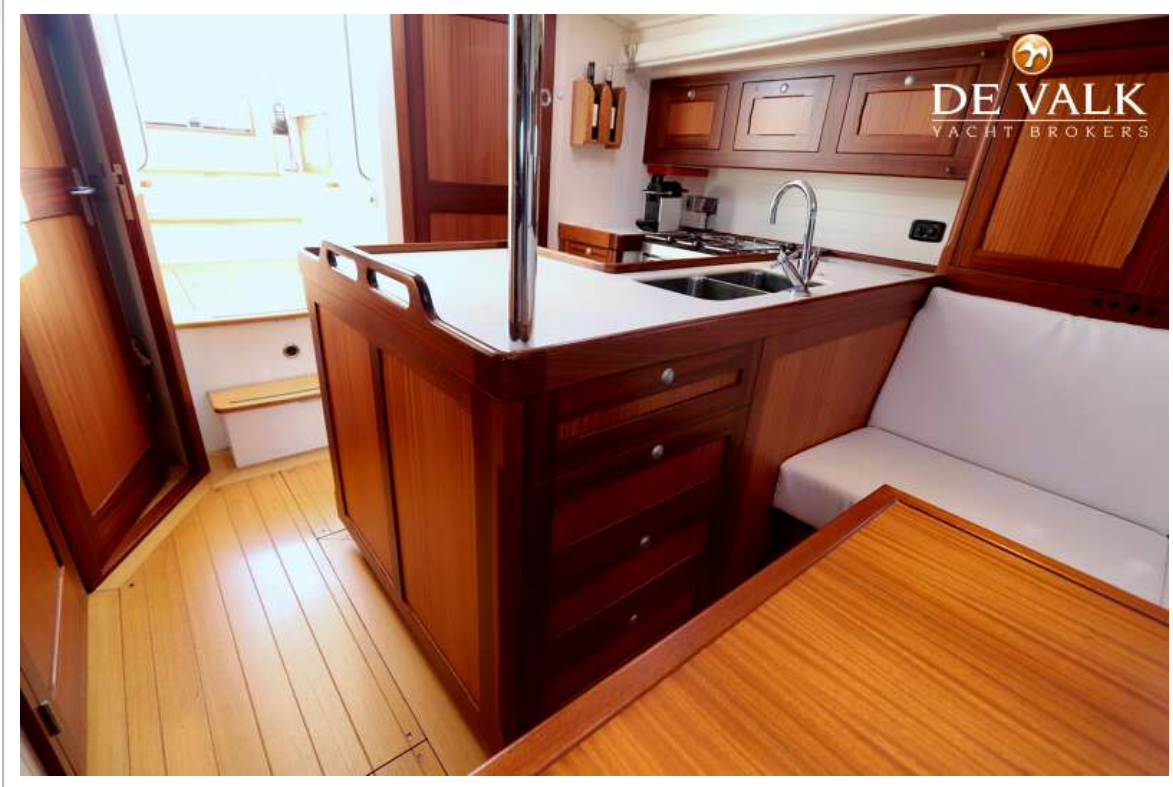




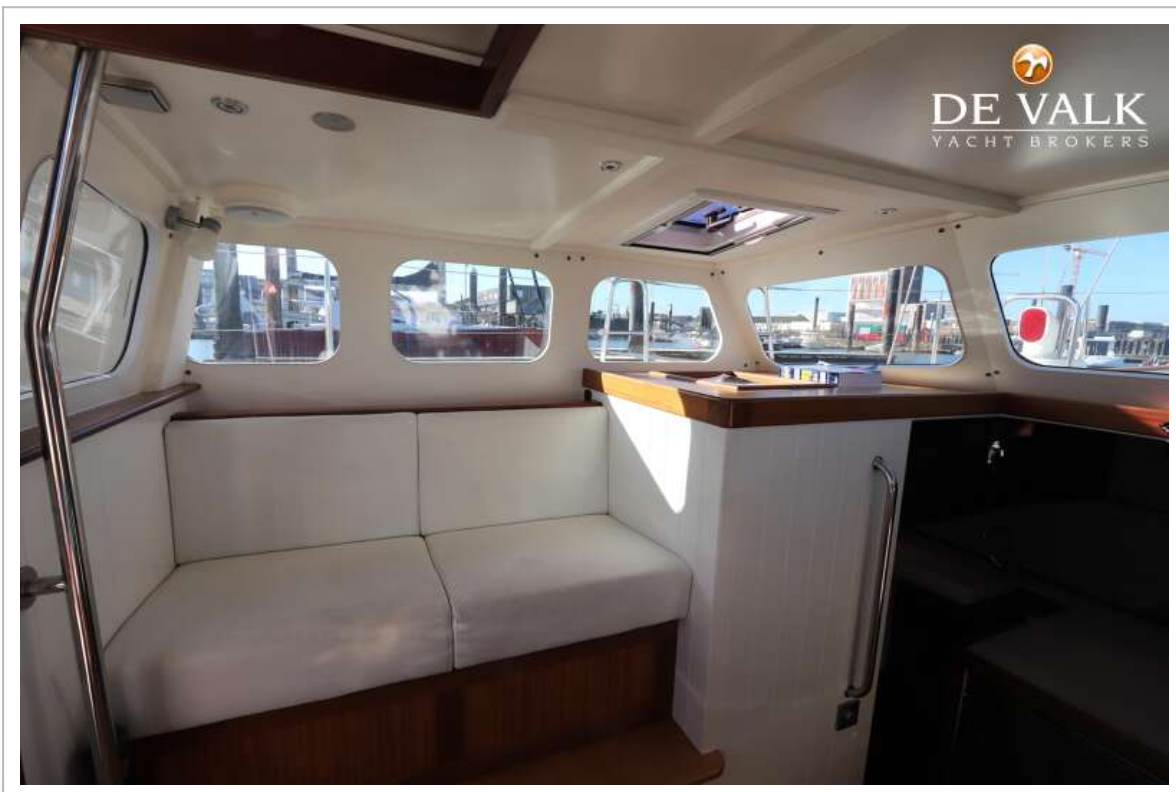
# BESTEWIND 50 PILOTHOUSE



# BESTEWIND 50 PILOTHOUSE

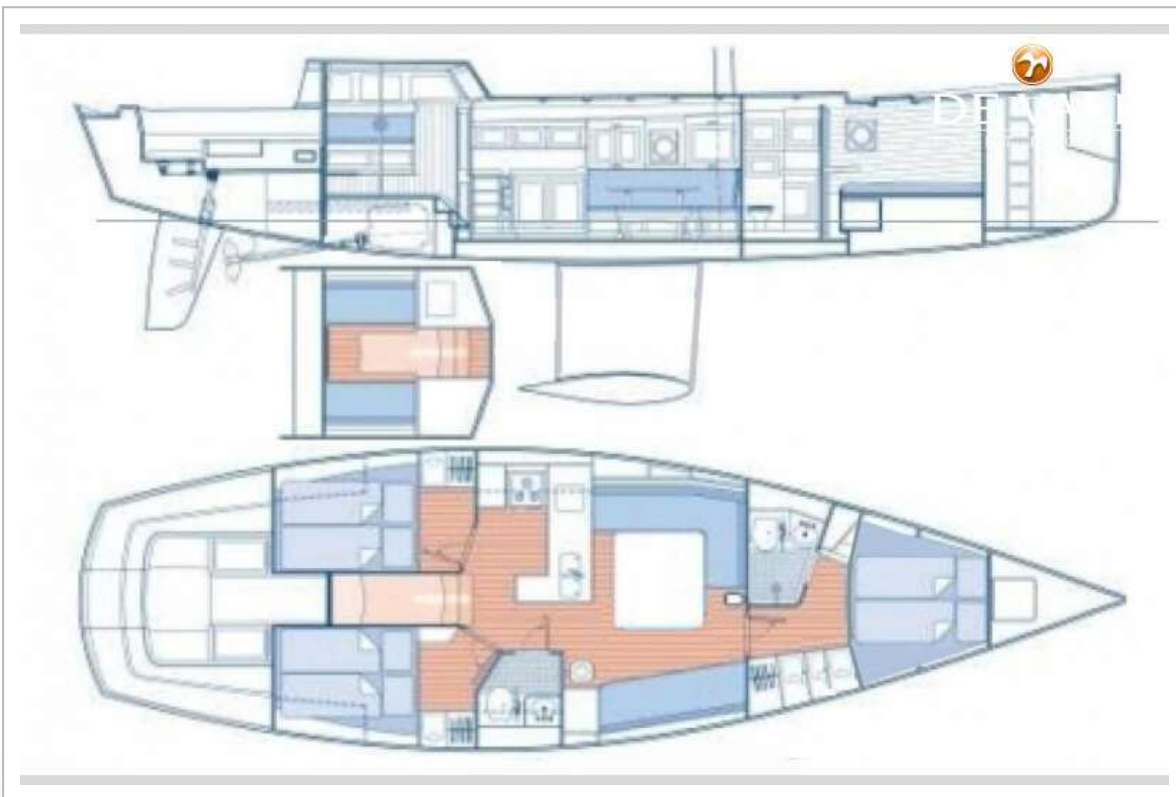


# BESTEWIND 50 PILOTHOUSE

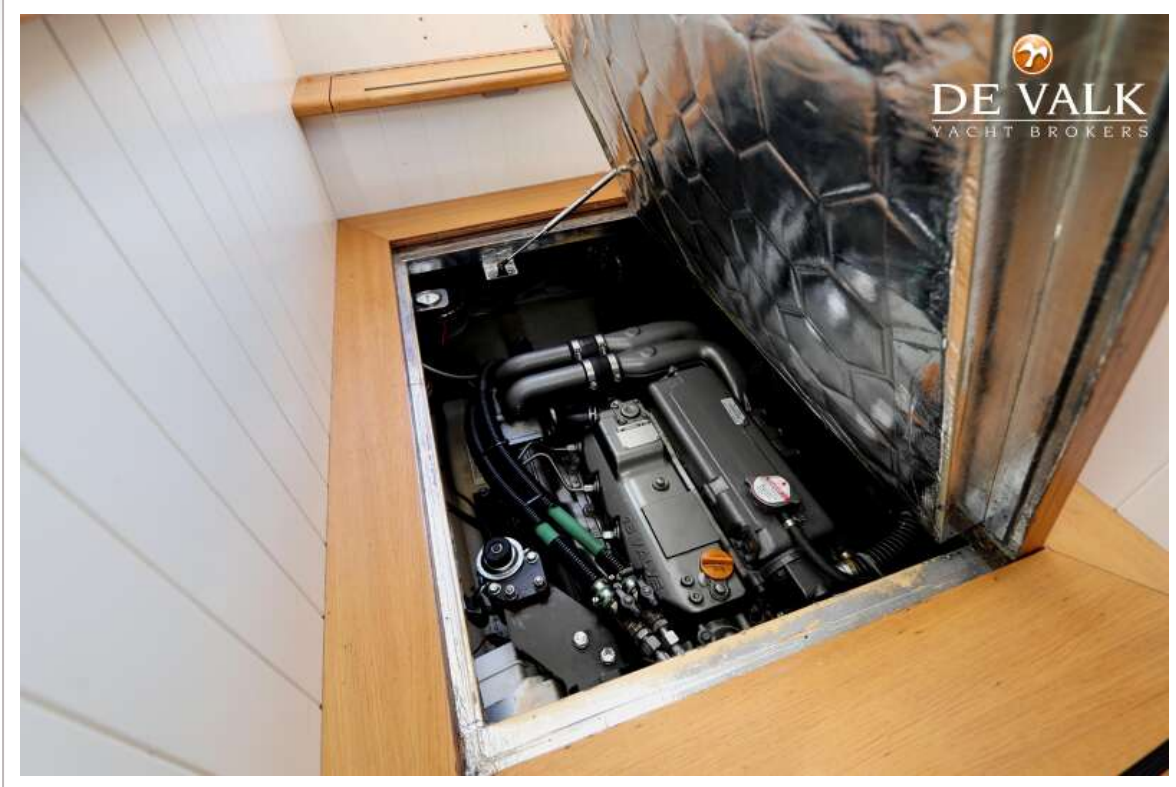




# BESTEWIND 50 PILOTHOUSE



# BESTEWIND 50 PILOTHOUSE



# BESTEWIND 50 PILOTHOUSE





# BESTEWIND 50 PILOTHOUSE

