



DE VALK
YACHT BROKERS



ENDURANCE 38



DE VALK
YACHT BROKERS

BROKER'S COMMENTS

"Branta" was designed by Peter Ibold, well known for his previous elegant and seaworthy designs, the elegant styling combined with a modern fin and skeg hull profile to provide greatly enhanced performance particularly to windward and in light airs. The deck saloon layout with large windows provide ample light and a good view of the surroundings from the saloon seating. Good stowage space throughout and a deep cockpit for safety when underway. An ideal "go anywhere" offshore yacht for secure family cruising or to explore distant shores. She is not in our marina but can be seen on appointment.

Reinier van der Wolf

SPECIFICATIONS

Dimensions	11.58 x 3.58 x 1.80 (m)	Builder	Klaas Bood, Nijkerk
Built	1998	Cabins	2
Material	Wood Epoxy	Berths	4
Engine(s)	1 x Yanmar 3JH2-TCE Turbo diesel	Hp/Kw	47.00 (hp), 34.59 (kw)
Asking price	Under Offer (VAT)	Lying	elsewhere / Not at sales office

CONTACT

Sales office	De Valk Monnickendam	Telephone	+31 299 65 63 50
Address	Hoogedijk 6 1145 PM Katwoude The Netherlands	E-mail	monnickendam@devalk.nl

DISCLAIMER

These particulars are given in good faith as supplied but cannot be guaranteed.



GENERAL

Model	ENDURANCE 38
Type	sailing yacht
LOA (m)	11,58
LWL (m)	8,90
Beam (m)	3,58
Draft (m)	1,80
Air draft (m)	18,00
Headroom (m)	1,95
Year built	1998
Builder	Klaas Bood, Nijkerk
Country	The Netherlands
Designer	Peter Ibold Yacht Design
Displacement (t)	8
Ballast (tonnes)	lead 3,85
Gross tonnage	10
Net tonnage	8
Hull material	wood epoxy
Hull colour	blue
Hull thickness (mm)	38 mm.
Hull shape	round-bilged
Keel type	fin keel
Superstructure material	wood epoxy
Rubbing strake	wood + stainless steel strip met rvs strip Nerostahlband
Deck material	wood epoxy + with foam core met schuim kern mit Schaumkern
Deck finish	teak
Superstructure deck finish	non-skid paint
Cockpit deck finish	synthetic teak - (2023)
Antifouling (year)	Dover white - VC Offshore EU (2024)
Dorades	1x
Window frame	aluminium



Window material	tempered glass
Deckhatch	2x
Portholes	aluminium - 4x
Insulation	foam - in deck in dek im Deck
Fuel tank (litre)	epoxy - 350
Level indicator (fuel tank)	yes
Freshwater tank (litre)	epoxy - 350
Level indicator (freshwater)	yes
Blackwater tank (litre)	epoxy - 130
Level indicator (blackwater)	yes
Blackwater tank extraction	deck extraction + uw line
Wheel steering	mechanical - Whitlock
Inside helm position	yes
Outside helm position	mechanical
Emergency tiller	yes
More info on hull	wood-epoxy hull with twaron shield in foreship
More info on paintwork	newly painted in 2023. Paint: AWL Grip G 5002, 2 components.
Extra info	examples of sectioned deck and hull present. These were taken out in view of the installation of the bow thruster and deck prisms.
Extra info	from her year of construction until this year, 'Branta' has been stored in a covered winter storage during the winter months between mid-October until mid-April.

ACCOMMODATION

Cabins	2
Berths	4
Interior	teak
Floor	wood
Open cockpit	yes
Pilot house/deck saloon	yes
Headroom saloon (m)	1,95



ENDURANCE 38

Heating	diesel ducted hot air - Webasto Air Top 3500
Heating 2	electric 220V - fan heater ventilator kachel Heizlüfter
Chart table	with storage compartments and flag set
Dinette	yes
Galley	spacious galley
Countertop	plastic
Sink	stainless steel
Cooker	calor gas - Smev 4 Burner pits Flammen
Oven	+ Grill
Gas alarm	yes
Fridge	with freezer compartment - Isotherm 65 l. (2023)
Hot water system	220V + engine - boiler 55 l.
Water pressure system	electrical
Owners cabin	double bed
Bed length (m)	2.00
Wardrobe	shelves
Bathroom	separate
Toilet	shared
Toilet system	manual - Jabsco (2023)
Wash basin	in the bathroom
Extra info	double bed reupholstered 2012 and fitted with anti-fog mats.
Guest cabin 1	v-bed
Bed length (m)	1.85 m.
Wardrobe	hanging and shelves
Extra info	originally 2 cabins, of which owner's cabin on SB has been converted into a spacious bedstead.

MACHINERY

No of engines	1
Make	Yanmar
Type	3JH2-TCE Turbo



HP	47
kW	34.59
Fuel	diesel
Year installed	1999
Maximum speed (kn)	7
Cruising speed (kn)	5
Consumption (l/hr)	2,5
Range (nm)	700
Engine hours	3842
Engine cooling system	freshwater heat exchanger
Drive	sail-drive
Engine controls	bowden cable
Gearbox	mechanical SD 31
Bowthruster	electric - QL Compact Thruster CT600 (2007)
Exhaust	watercooled
Propeller type	folding
Propeller blades	with 3 bladed folding propeller
Manual bilge pump	yes
Electric bilge pump	yes
Bilge alarm	yes
Batteries	5x VMF Sportline 105 Ah (2023) 1x 145 Ah (2024)
Start battery	1x 105 Ah
Service battery	2x 105 Ah
Navigation Battery	2x 105 Ah
Bowthruster battery	also used for anchor winch -1x 145 Ah
Battery monitor	yes
Battery charger	Victron (2011)
Inverter	separate inverter for telephone
Solar panel	2x with chargeregulator Fox 350 (2018)
Shorepower	with cable + earth leakage switch aardlekschakelaar Differenzialschalte
Auto positioning system	yes



Extra info spare propellers: 2-blade folding propeller + 3-blade fixed propeller.

NAVIGATION

Compass	on steering column - Whitlock Polaris 115 P
Electric compass	yes
Depth sounder	(2016)
Log	(2016)
Windset	(2016)
Repeater	on steering column - (2016)
VHF	Icom IC M59 Euro
Autopilot	Powers Whitlock autopilot drive system - (2016)
Rudder angle indicator	yes
Radar	yes
Plotter/GPS	B&G Zeus (2016)
Navtex	K-41
Electronic chart(s)	yes
AIS receiver	yes
AIS transponder	yes
AIS transceiver	yes
Navigation lights	yes

EQUIPMENT

Sprayhood	yes
Bathing platform	yes
Boarding ladder	stainless steel
Bow ladder	Fenderstep
Anchor	Bruce - 15 kg.
Anchor chain	60 m.
Anchor 2	Bruce - 10 kg
Windlass	electrical QL (2007)



Deck wash	with hose and spray gun
Dinghy	inflatable Quicksilver 2,5m
Outboard	3.3 hp Mercury
Sea railing	wire
Grab rail (superstructure)	wood
Railing side opening gates	yes
Pushpit	with step-in
Pulpit	yes
Life raft	valise (or bag) - Lazizas Pleisure
Life raft (pers)	4x
Last life raft survey	May 2024
Lifejackets	4 of which 2 are self-inflating
Safety harness	yes
Lifebuoy	yes
Safety lines on deck	yes
Wiper	with two speeds
Binocular	yes
Radar reflector	yes
Fenders	6x
Mooring lines	6x
Spare parts	div. lines including lightweight gennaker sheets, bulletallies, downhaul spinnaker pole etc.
Tools	yes
Alarm system	Bilge alarm - battery alarm - gas alarm
Radio-cd player	yes
Speakers in salon	yes
Clock - barometer	yes
Fire extinguisher	2x
Latest extinguisher survey	2024
Extra info	possibly a trailer (custom-made) + Bauer 10 GRP sail/rowing/motor sloop for takeover.



Extra info Anchor 2: stern anchor with 40 m lead weighted line. Boatman's seat available (plastimo)

RIGGING

Rigging	cutter
Standing rigging	wire - 8 mm. stainless steel rvs Edelstahl
Brand mast	Seldén
Material mast	aluminium
Spreaders	2
Mainsail cover	yes
Battcars	yes
Fully battened mainsail	North sails (2009) T Cut 37 m2
Cutterstay	yes
Jib	North sails (2009) T Cut 13 m2
Genoa	North Sails (2009) T Cut 36 m2
Genoa furler	Bahmar
Cutter furler	Bahmar
A-symmetric spi	97 m2 (2003)
Trysail	yes
Reefing System	slabreefing
Backstay adjuster	mechanical
Boomvang	gasspring - Seldén Rodkicker 20
Primary sheet winch	6x Andersen ST + 1x Andersen
Secondary sheet winch	yes
Halyard winches	yes
Multifunctional winches	2x on mast
Spi-pole	aluminium - retractable uitschuifbaar ausziehbar
Gennaker pole	stainless steel - on bow op boeg am Bug
Extra info	spare sails: 1x mainsail (Lammerts van Buren), 1x jib (Lammerts van Buren), 1x genoa (Lammerts van Buren).
Extra info	2x handy bars stainless steel around the mast foot. 2x backstays 8 mm stainless steel.

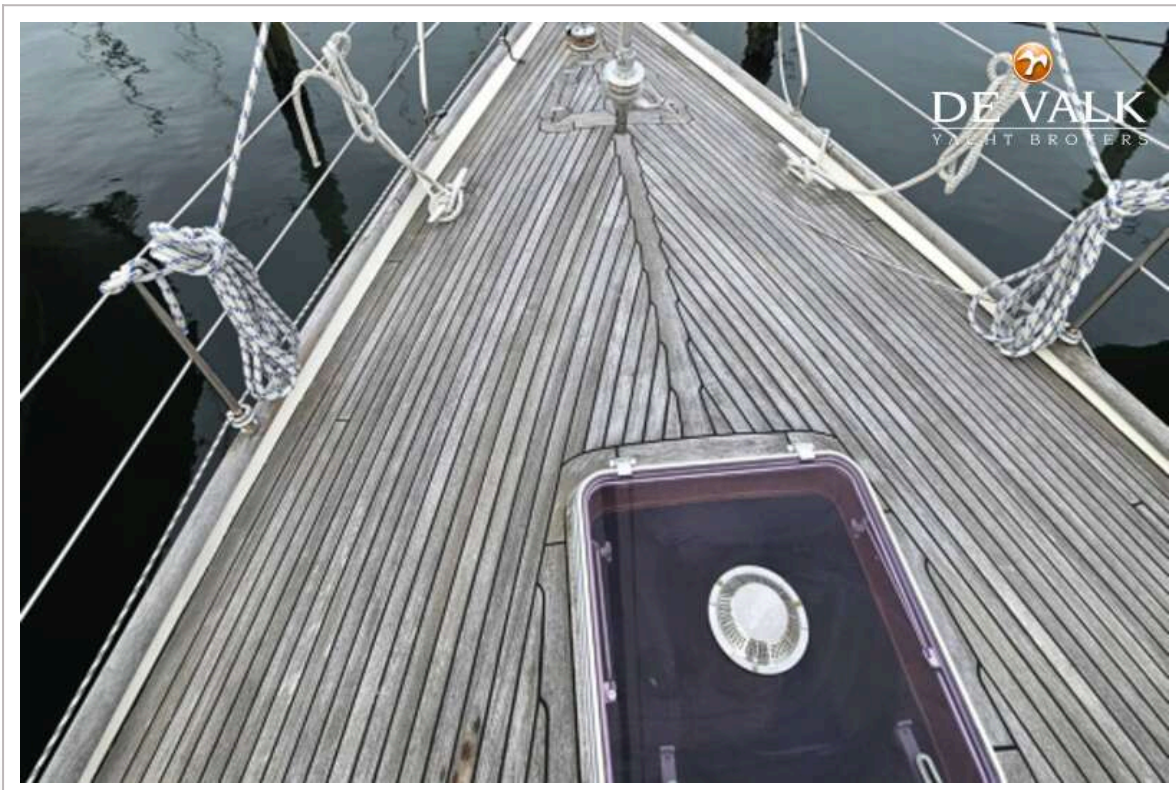
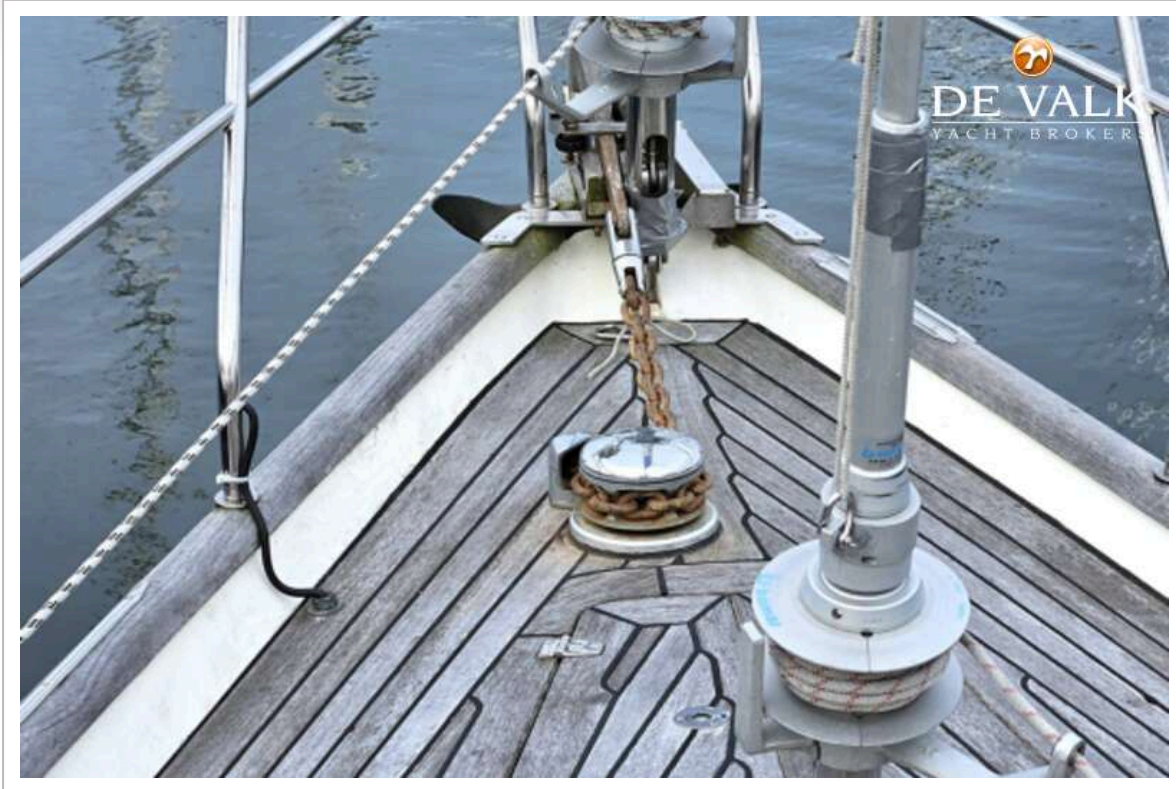






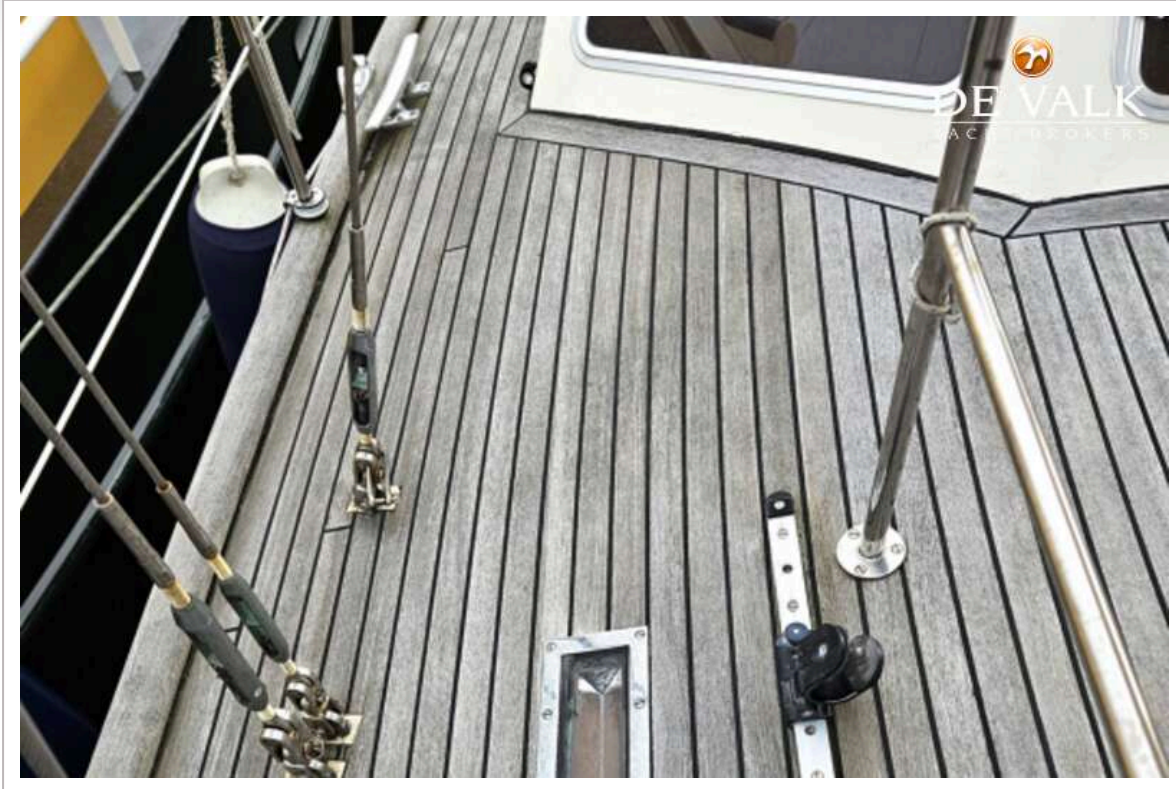


ENDURANCE 38

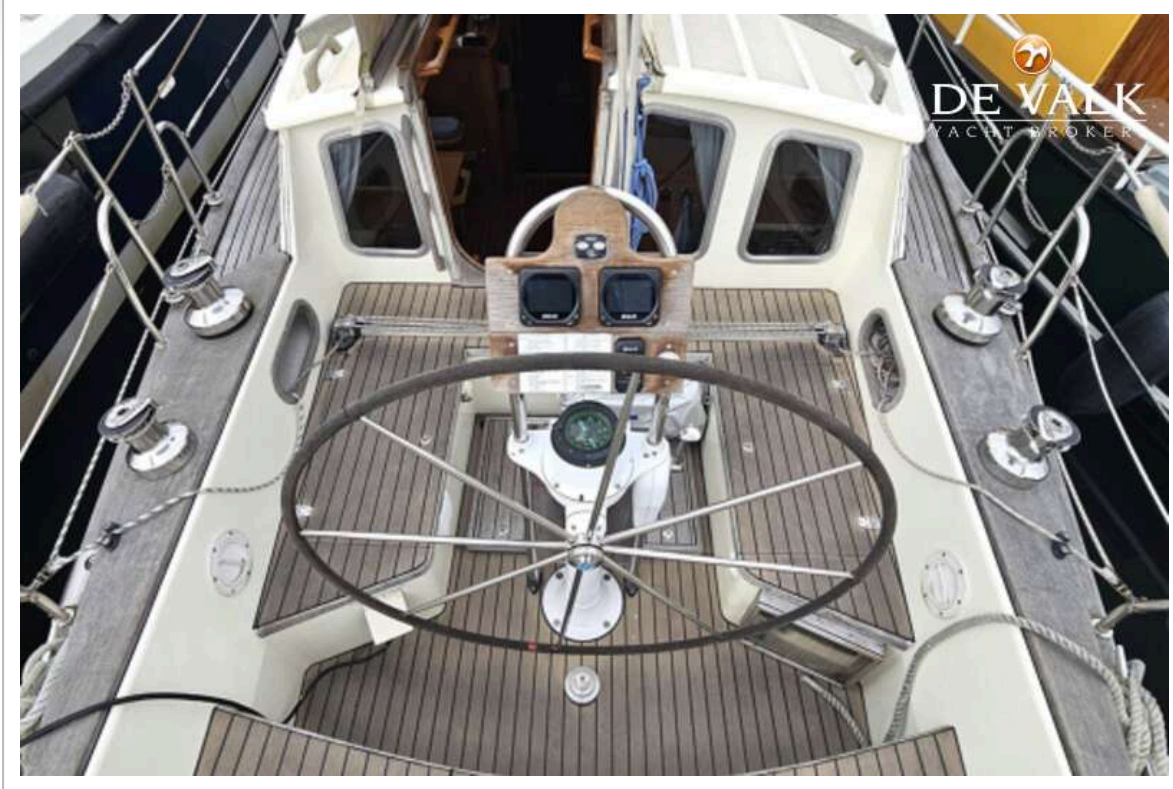


ENDURANCE 38





ENDURANCE 38

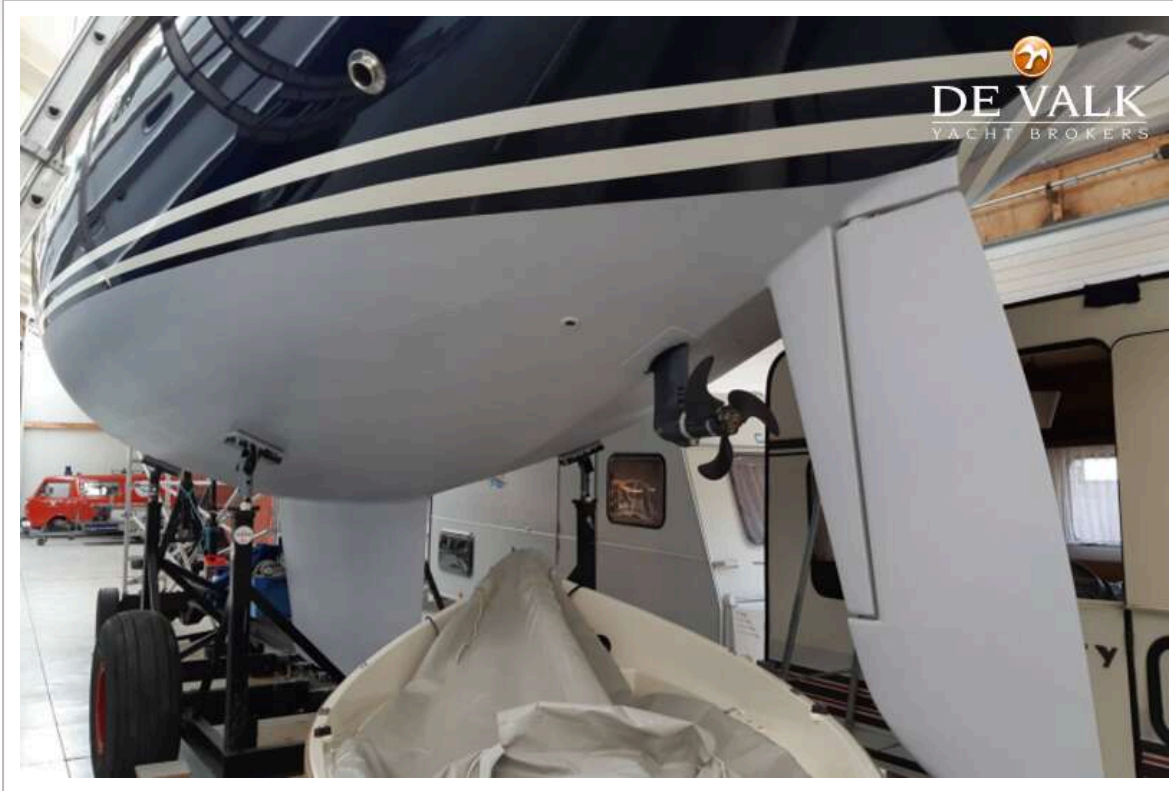




ENDURANCE 38



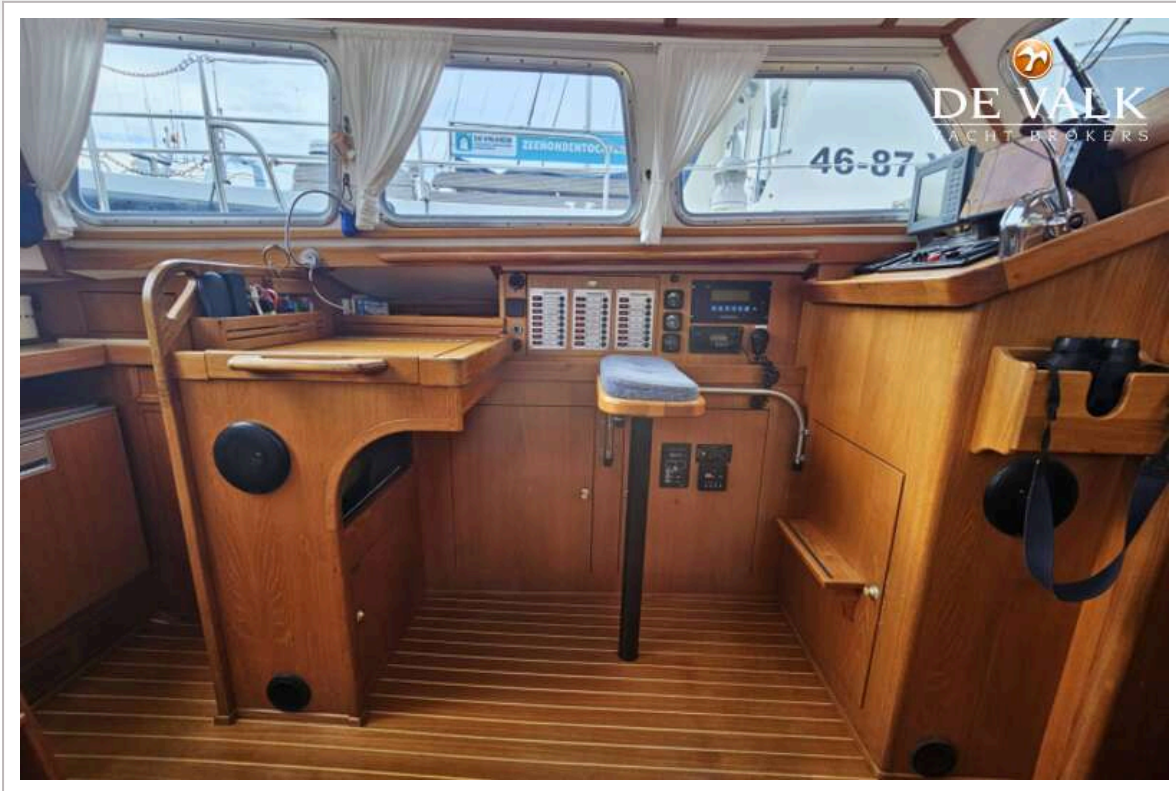
ENDURANCE 38



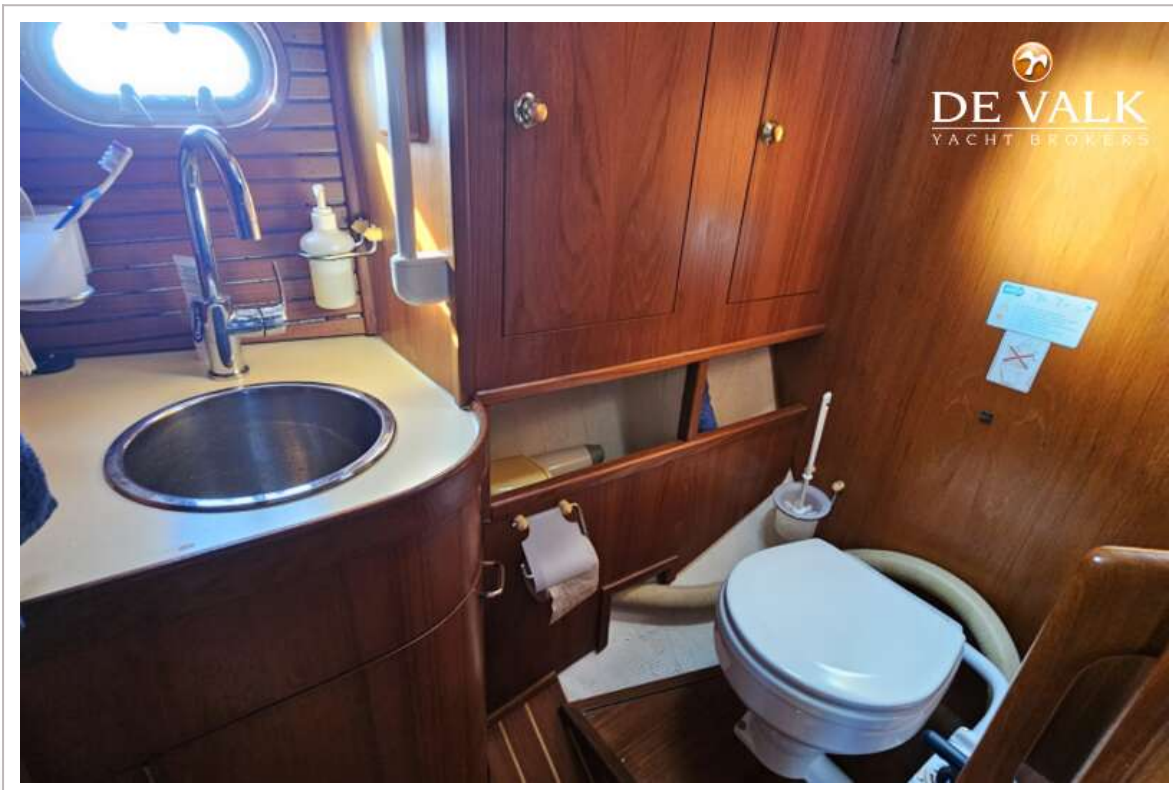
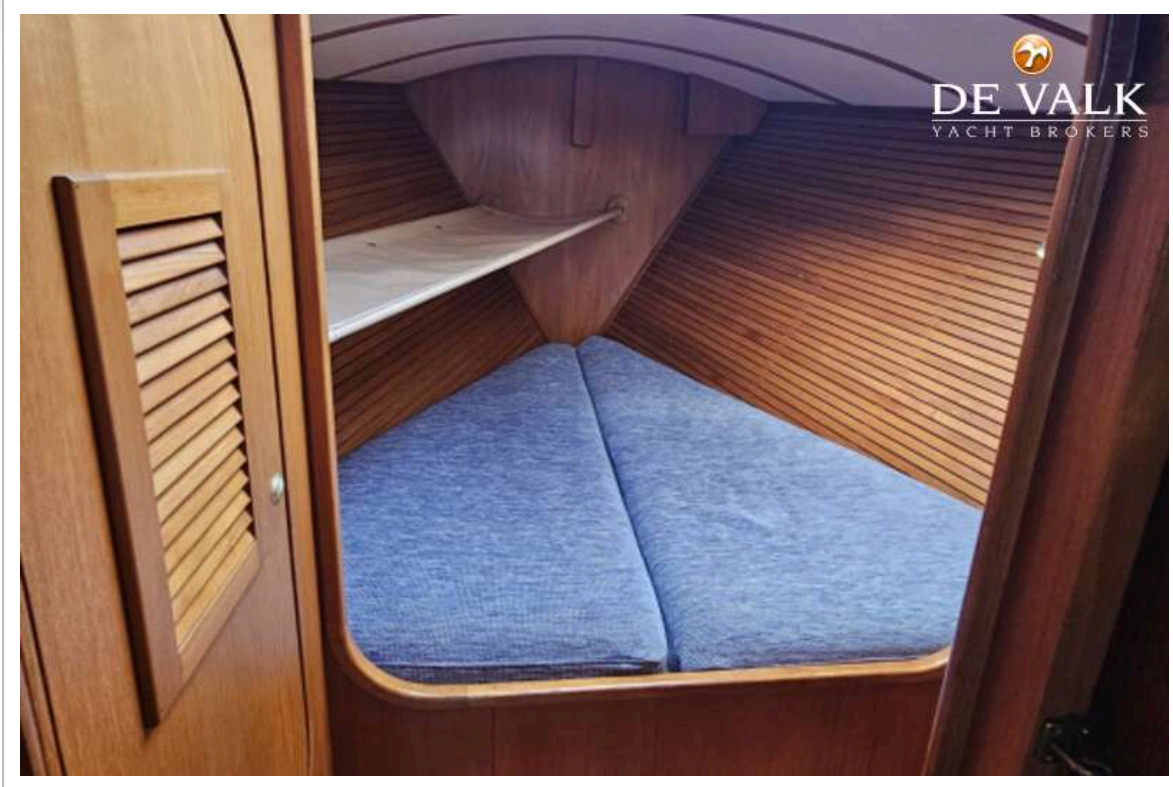
ENDURANCE 38



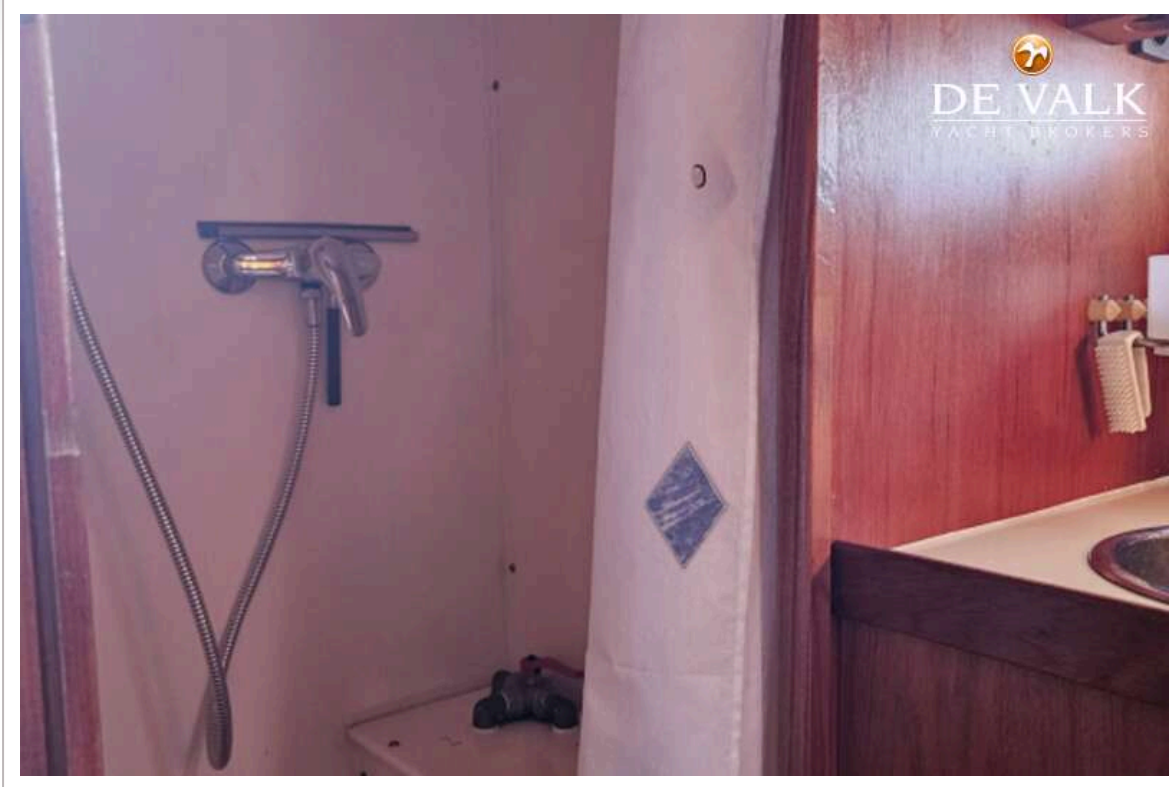
ENDURANCE 38



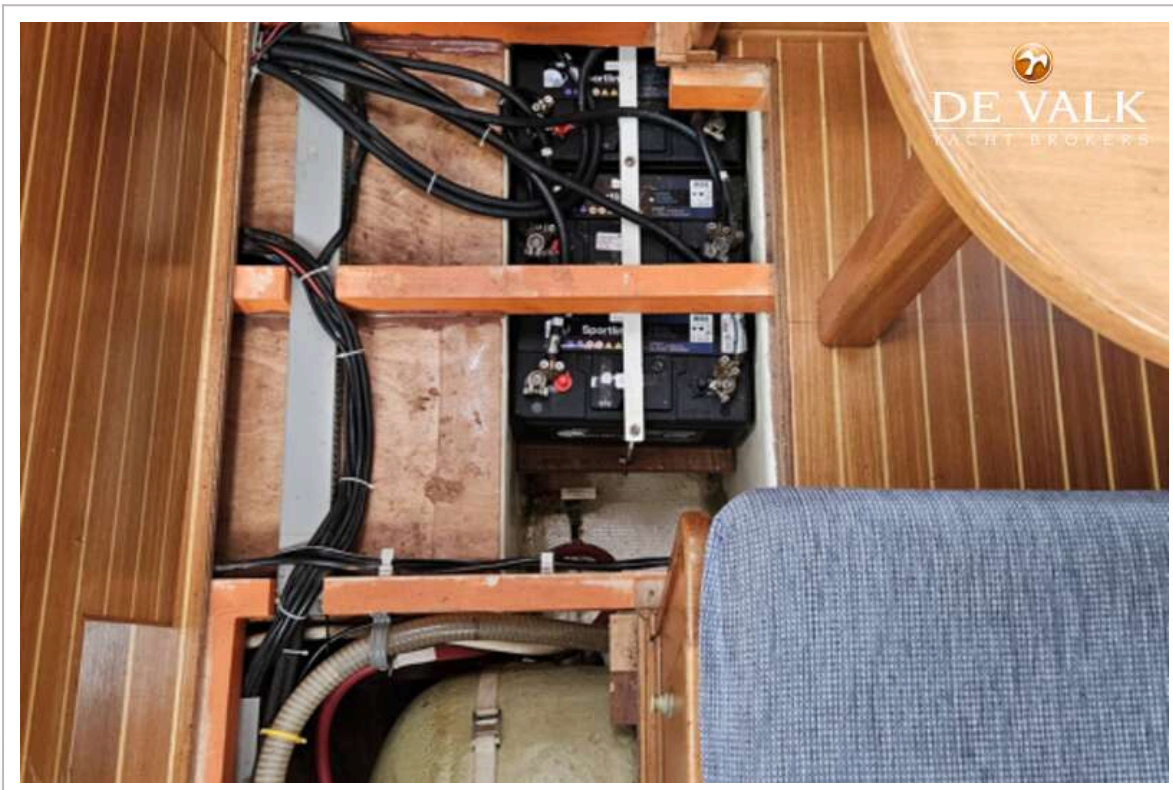
ENDURANCE 38

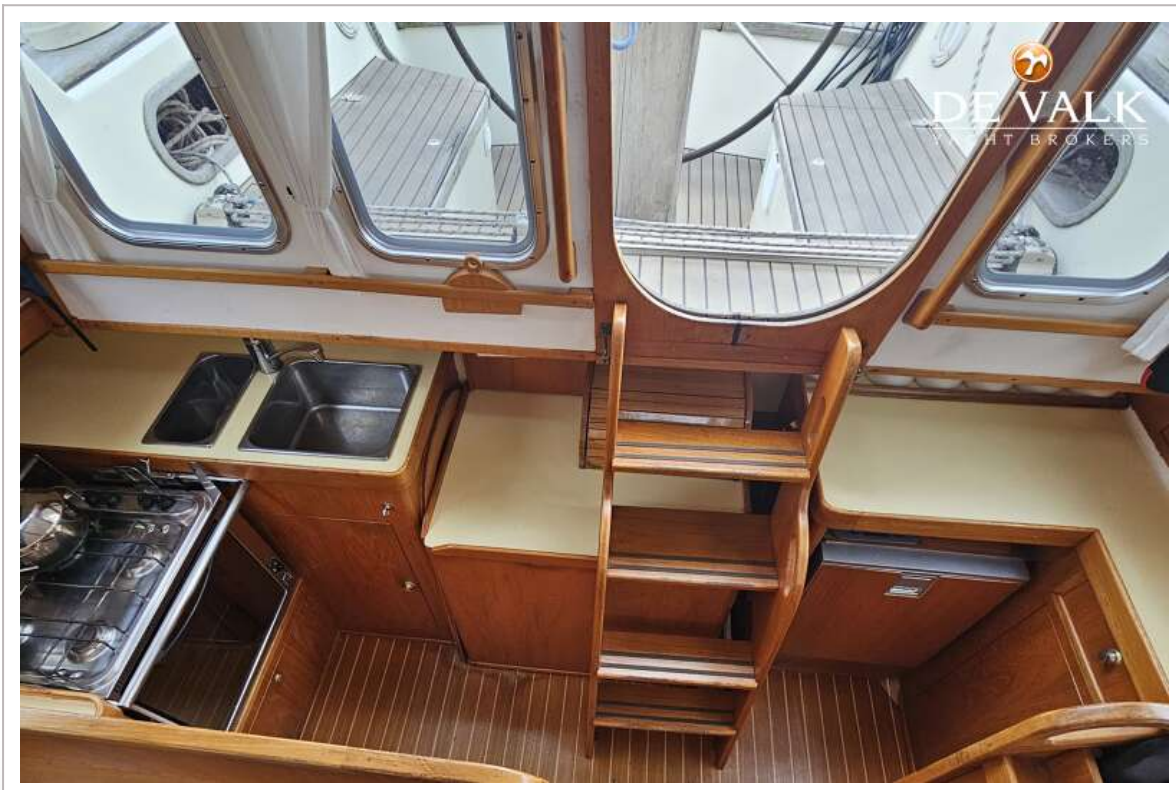
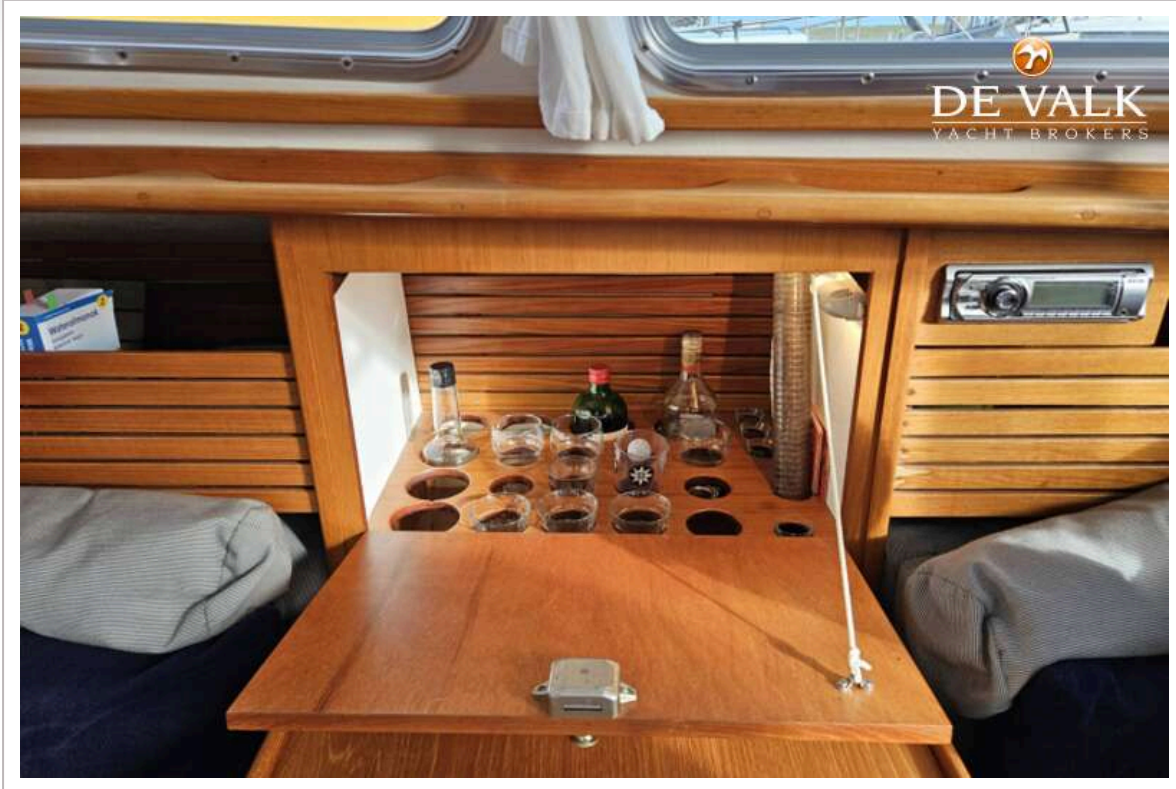


ENDURANCE 38



ENDURANCE 38

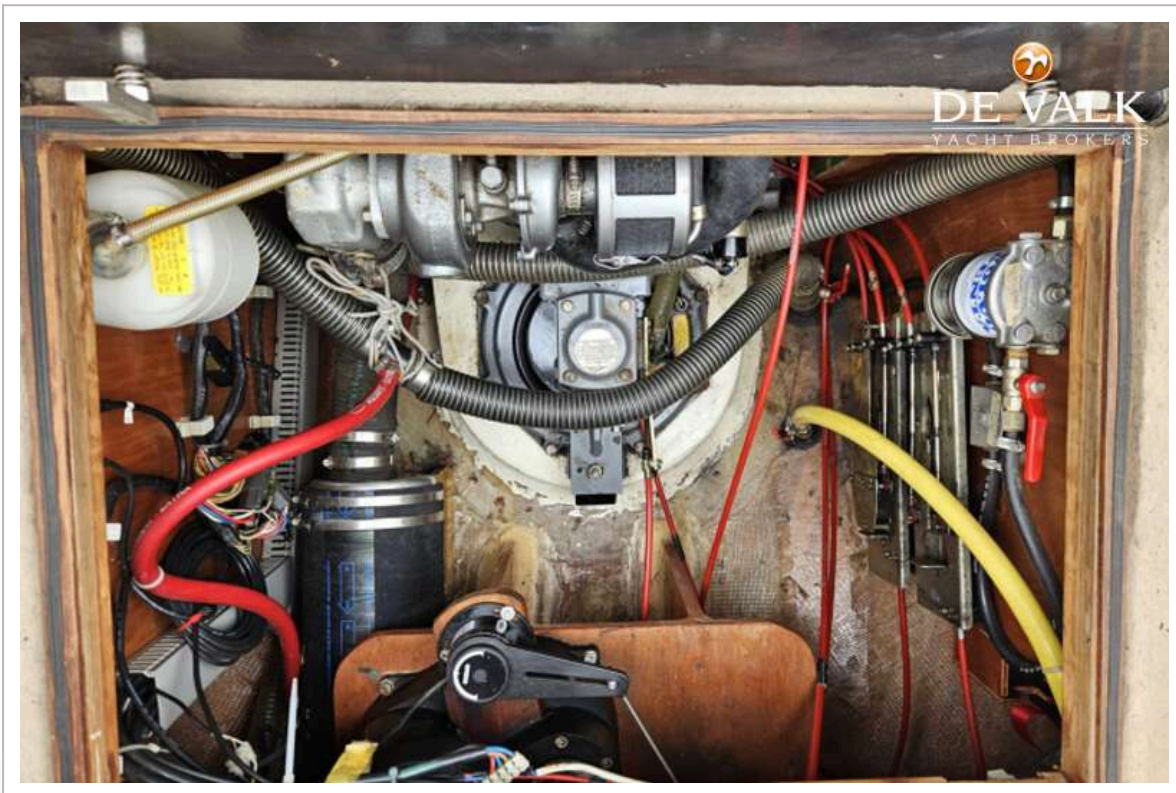
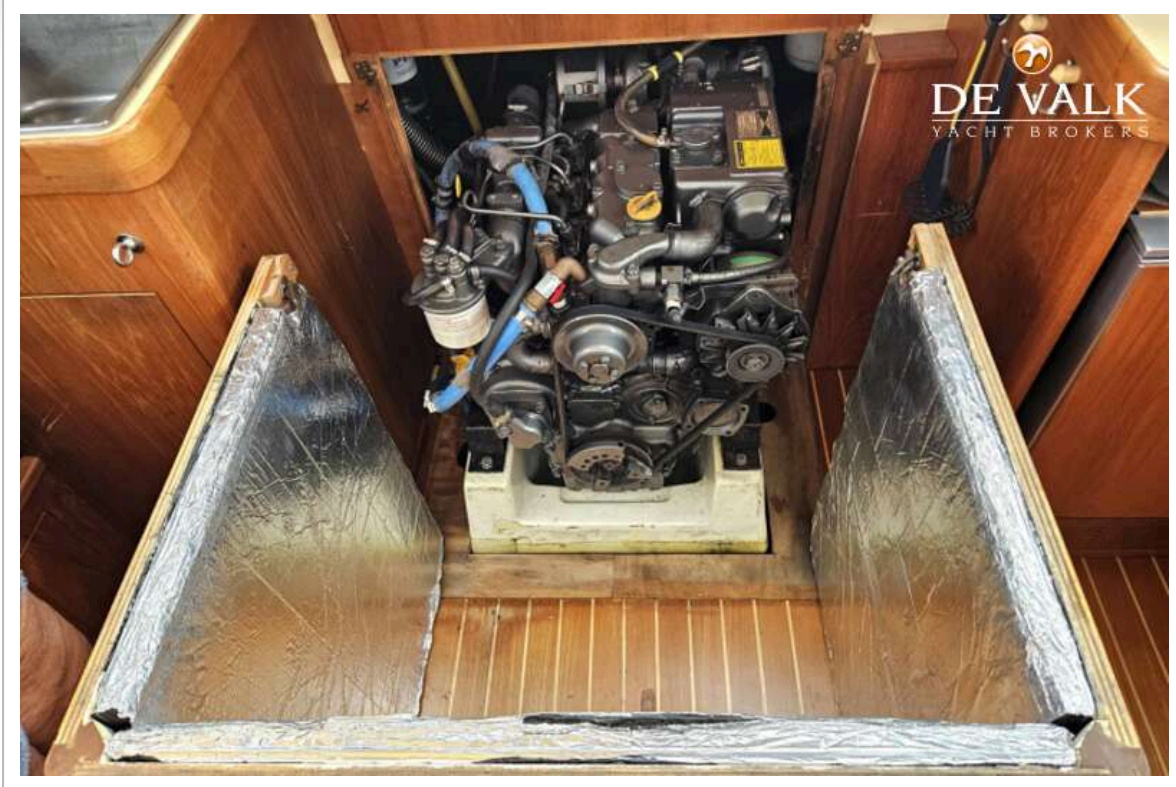




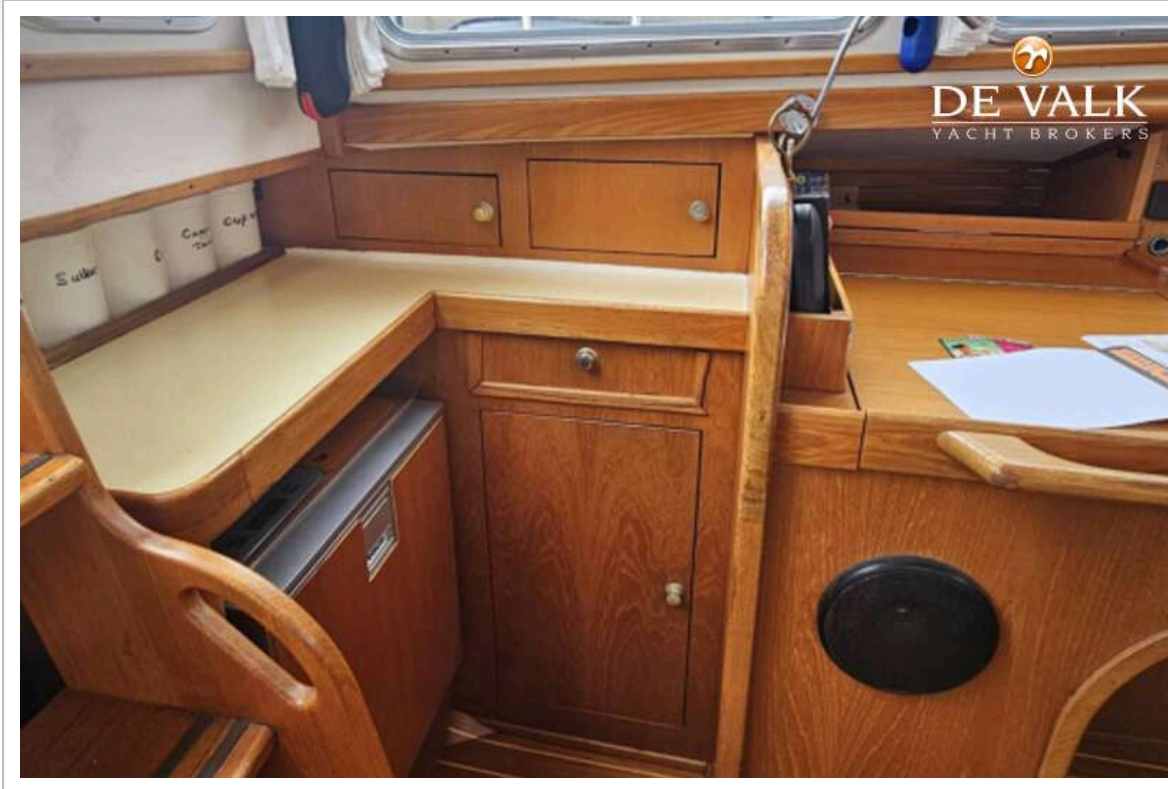
ENDURANCE 38



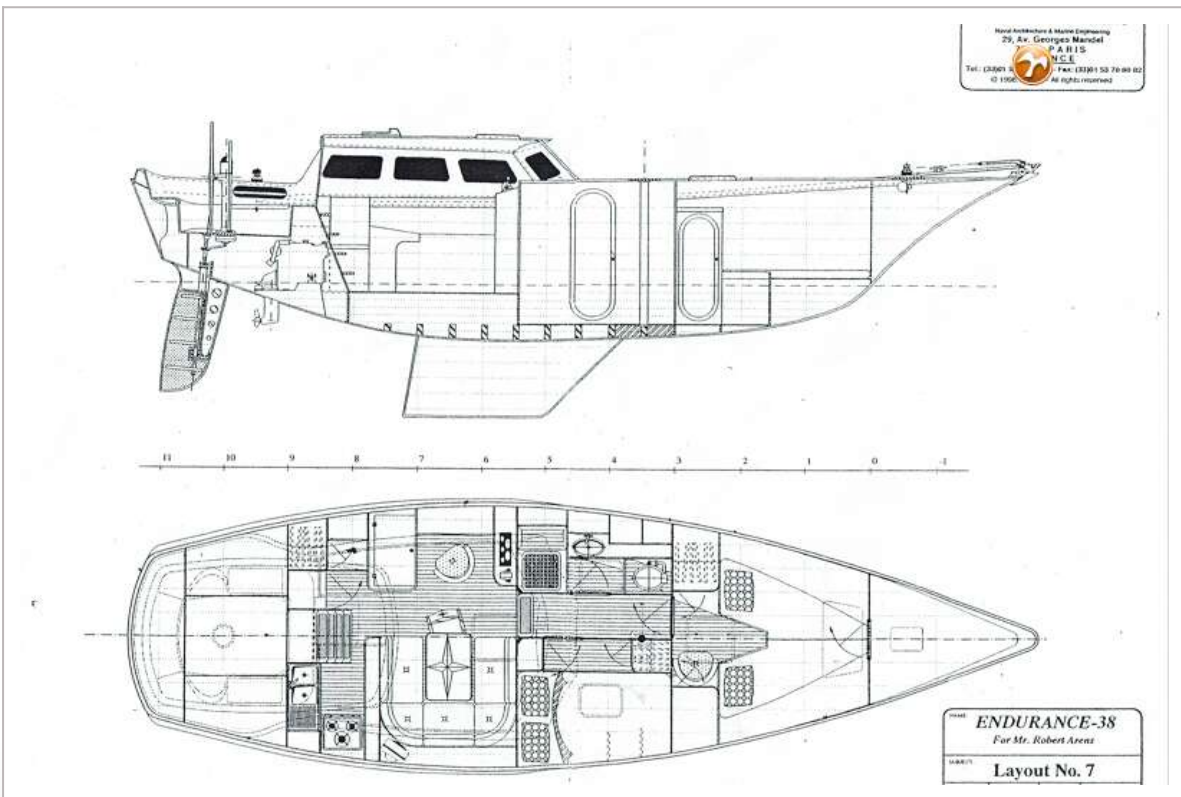
ENDURANCE 38



ENDURANCE 38




DE VALK
YACHT BROKERS



Naval Architect & Marine Engineering
25, Av. Georges Mandel
P A R I S
15^e arr.
Tel: (33)01 47 38 15 53 Fax: (33)01 53 78 98 82
© 1998 All rights reserved

MODEL **ENDURANCE-38**
For Mr. Robert Arent
LAYOUT **Layout No. 7**



ENDURANCE 38

