



DE VALK  
YACHT BROKERS



## BEELDSNIJDER PILOTHOUSE SCHOENER 50



DE VALK  
YACHT BROKERS

## BROKER'S COMMENTS

This well-maintained steel deckhouse schooner sailing yacht is designed by Pieter Beeldsnijder. Construction started between 1994/1996, but the yacht was not completely finished until 2004, and is always used by the first owner. She offers style and comfort and has many nice details. A lot of beautiful stainless steel has been placed on the yacht. Her high volume in combination with three sleeping cabins and with her deckhouse configuration makes her ideal for staying on board and for long-term cruising. Is located on fresh water in the South of the Netherlands and can be viewed by appointment

*Ger Bayens*

## SPECIFICATIONS

<b>Dimensions</b>	14.85 x 4.50 x 2.10 (m)	<b>Builder</b>	De Ruyter/Fish-Tech
<b>Built</b>	1996	<b>Cabins</b>	3
<b>Material</b>	Steel	<b>Berths</b>	6
<b>Engine(s)</b>	1 x Cummins 6 B5 9-M diesel	<b>Hp/Kw</b>	110.00 (hp), 81.00 (kw)
<b>Asking price</b>	€ 249.000 (VAT Paid)	<b>Lying</b>	elsewhere / Not at sales office

## CONTACT

<b>Sales office</b>	De Valk Thuishaven	<b>Telephone</b>	+31 35 5829042
<b>Address</b>	Peperstraat 7 1411 PX Naarden The Netherlands	<b>E-mail</b>	thuishaven@devalk.nl

## DISCLAIMER

These particulars are given in good faith as supplied but cannot be guaranteed.



## GENERAL

<b>Model</b>	BEELDSNIJDER PILOTHOUSE SCHOENER 50
<b>Type</b>	sailing yacht
<b>LOA (m)</b>	14,85
<b>LWL (m)</b>	12,85
<b>Beam (m)</b>	4,50
<b>Draft (m)</b>	2,10
<b>Air draft (m)</b>	18,40
<b>Headroom (m)</b>	1,90
<b>Year built</b>	1996
<b>Launched</b>	2004
<b>Builder</b>	De Ruyter/Fish-Tech
<b>Country</b>	The Netherlands
<b>Designer</b>	Pieter Beeldsnijder
<b>Displacement (t)</b>	25
<b>Ballast (tonnes)</b>	lead in steel 7
<b>Hull material</b>	steel
<b>Hull colour</b>	blue
<b>Hull thickness (mm)</b>	6 mM
<b>Hull shape</b>	S-bilged
<b>Keel type</b>	long keel
<b>Superstructure material</b>	steel
<b>Deck material</b>	steel
<b>Deck finish</b>	teak
<b>Superstructure deck finish</b>	paint
<b>Cockpit deck finish</b>	teak
<b>Dorades</b>	6X
<b>Window frame</b>	stainless steel
<b>Window material</b>	glass
<b>Deckhatch</b>	yes
<b>Portholes</b>	brass



Insulation	yes
Fuel tank (litre)	stainless steel 600
Level indicator (fuel tank)	Votronic
Fuel daytank (litre)	yes
Freshwater tank (litre)	stainless steel 800
Level indicator (freshwater)	Votronic
Blackwater tank (litre)	stainless steel
Level indicator (blackwater)	Votronic
Blackwater tank extraction	pump
Wheel steering	hydraulic

## ACCOMMODATION

Cabins	3
Berths	6
Interior	cherry
Layout	deck house / saloon / aft cabin / forward cabin / 3th cabin / 1x toilet-shower
Floor	teak and holly
Open cockpit	yes
Deck saloon	yes
Saloon	yes
Headroom saloon (m)	1,90
Heating	central hot water Kabola Heating Systems B8 Cap/kW 11
Navigation center	yes
Chart table	yes
Aft Cabin	yes
Dinette	yes
Opening door to cockpit	yes
Galley	yes
Countertop	plastic
Sink	stainless steel



<b>Cooker</b>	calor gas
<b>Oven</b>	Smev rvs
<b>Microwave</b>	Daewoo Kor 634R
<b>Microwave/oven combi</b>	yes
<b>Fridge</b>	EC Electrolux refrigerator and an extra refrigerator 2x
<b>Freezer</b>	small one in the EC Electrolux refrigerator
<b>Hot water system</b>	220V + engine
<b>Water pressure system</b>	electrical
<b>Owners cabin</b>	French bed
<b>Bed length (m)</b>	2,00 x 1,50
<b>Wardrobe</b>	hanging and shelves
<b>Bathroom</b>	shared
<b>Toilet</b>	shared
<b>Toilet system</b>	manual
<b>Wash basin</b>	in the bathroom
<b>Shower</b>	shared
<b>Guest cabin 1</b>	twin single
<b>Bed length (m)</b>	2,00 x 0,80
<b>Wardrobe</b>	hanging and shelves
<b>Bathroom</b>	shared
<b>Toilet</b>	shared
<b>Toilet system</b>	manual
<b>Wash basin</b>	in the bathroom
<b>Shower</b>	shared
<b>Guest cabin 2</b>	bunk bed
<b>Bed length (m)</b>	2,10 X 0,75 / 2,15 X 0,80
<b>Wardrobe</b>	hanging and shelves
<b>Bathroom</b>	shared
<b>Toilet</b>	shared
<b>Toilet system</b>	manual
<b>Wash basin</b>	in the bathroom
<b>Shower</b>	shared



## MACHINERY

<b>No of engines</b>	1
<b>Make</b>	Cummins
<b>Type</b>	6 B5 9-M
<b>HP</b>	110
<b>kW</b>	81
<b>Fuel</b>	diesel
<b>Year installed</b>	1998
<b>Maximum speed (kn)</b>	8,5
<b>Cruising speed (kn)</b>	7
<b>Engine hours</b>	706
<b>Engine cooling system</b>	freshwater heat exchanger
<b>Drive</b>	shaft
<b>Shaft seal</b>	yes
<b>Engine controls</b>	bowden cable
<b>Gearbox</b>	ZFRM 50P2
<b>Bowthruster</b>	electric
<b>Exhaust</b>	watercooled
<b>Propeller type</b>	fixed
<b>Propeller blades</b>	3
<b>Propeller shaft material</b>	stainless steel
<b>Shaft lubrication</b>	water
<b>Electric bilge pump</b>	Dompel pump
<b>Electrical installation</b>	24/12/220V
<b>Generator</b>	wet exhaust SET Euro 4 / 4 kW (1999)
<b>Running hours generator</b>	265
<b>Batteries</b>	7
<b>Start battery</b>	2
<b>Service battery</b>	2
<b>Generator battery</b>	1
<b>Bowthruster battery</b>	2



<b>Battery monitor</b>	Victron Digital Multi Control
<b>Battery charger</b>	Mastervolt 24/12V
<b>Battery charger/inverter</b>	Victron Multiplus 24/300/70
<b>Diode battery combiners</b>	yes
<b>Shorepower</b>	with cable

## NAVIGATION

<b>Compass</b>	yes
<b>Electric compass</b>	VDO Navpac
<b>Depth sounder</b>	VDO Navpac
<b>Log</b>	VDO Navpac VDO Navpac
<b>Windset</b>	VDO Navpac VDO Navpac
<b>VHF</b>	Icom IC 323G + GPS
<b>Autopilot</b>	VDO Pilot
<b>Rudder angle indicator</b>	VDO Pilot
<b>Radar</b>	Raytheon SL 70
<b>Plotter/GPS</b>	VDO Kienzle Logic Map 7

## EQUIPMENT

<b>Winter cover</b>	yes
<b>Window cover</b>	on the hatches
<b>Boarding ladder</b>	stainless steel
<b>Deck shower</b>	yes
<b>Anchor</b>	Pool Stainless
<b>Anchor chain</b>	4 mtr. stainless / 30 mtr. galvanized
<b>Windlass</b>	electrical
<b>Capstan</b>	yes
<b>Deck wash</b>	yes
<b>Dinghy</b>	rigid hull
<b>Deck crane</b>	manual Stainless steel
<b>Sea railing</b>	wire



<b>Railing side opening gates</b>	yes
<b>Pulpit</b>	yes
<b>Fenders</b>	yes
<b>Mooring lines</b>	yes
<b>Radio-cd player</b>	Clarion
<b>Speakers in salon</b>	yes

## RIGGING

<b>Rigging</b>	schooner
<b>Standing rigging</b>	wire
<b>Material mast</b>	wood
<b>Spreaders</b>	2x 1
<b>Mast lowering system</b>	with an electric system
<b>Mainsail</b>	Zwaan Sails (2004)
<b>Mainsail cover</b>	yes
<b>Cutterstay</b>	yes
<b>Main staysail</b>	yes
<b>Fisherman staysail</b>	yes
<b>Jib</b>	yes
<b>Reefing System</b>	slabreefing
<b>Multifunctional winches</b>	halyard/sheet winches 2x Lewmar Electric
<b>Extra info</b>	Many beautiful stainless steel parts on the masts and booms

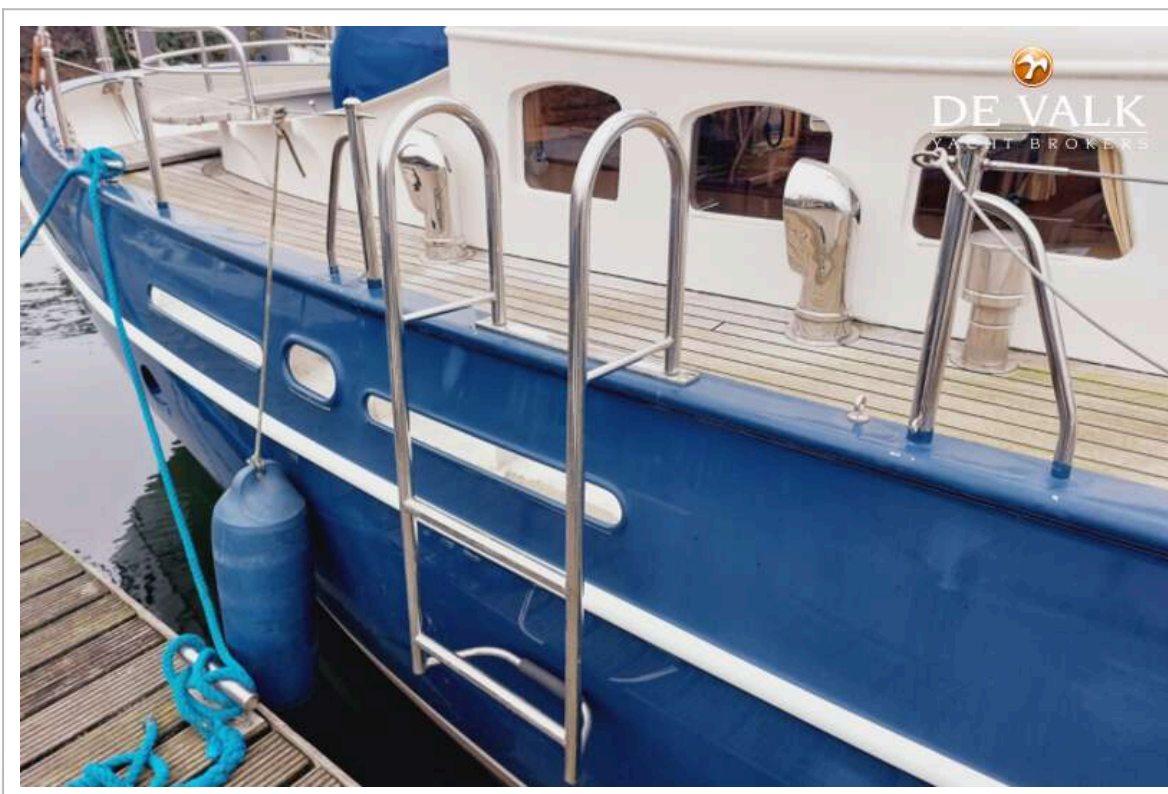
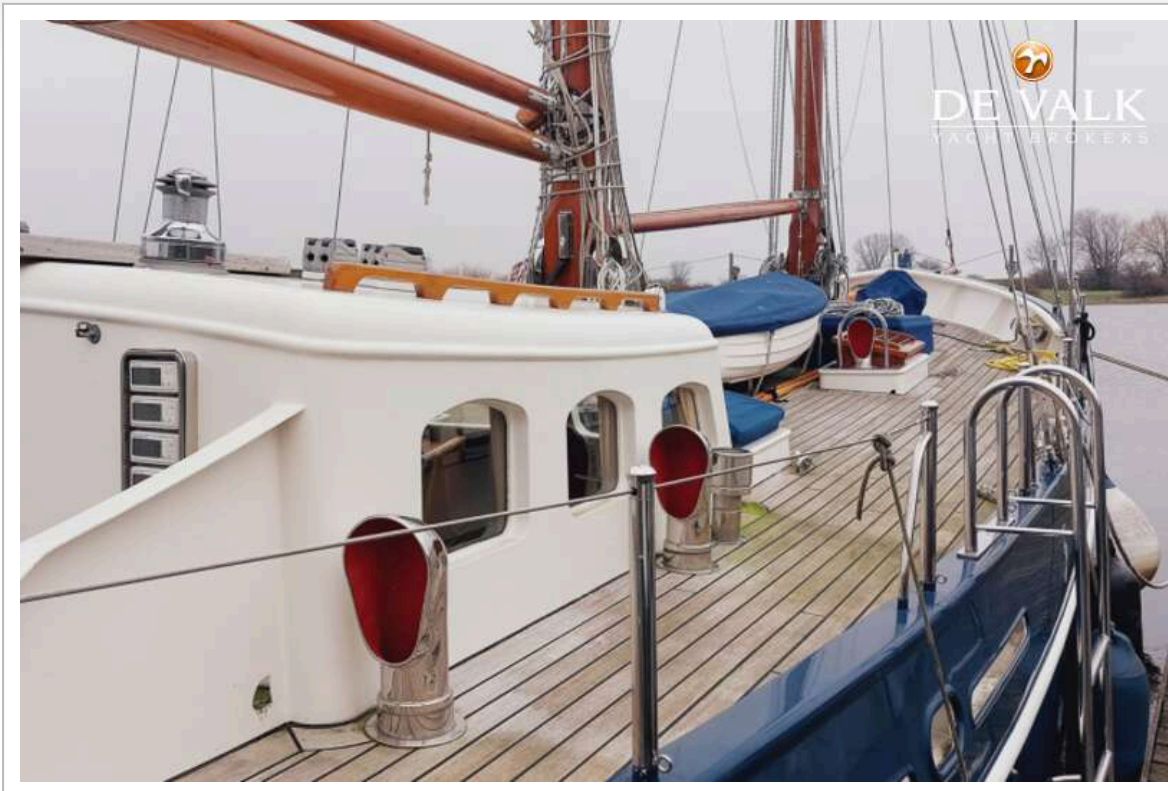










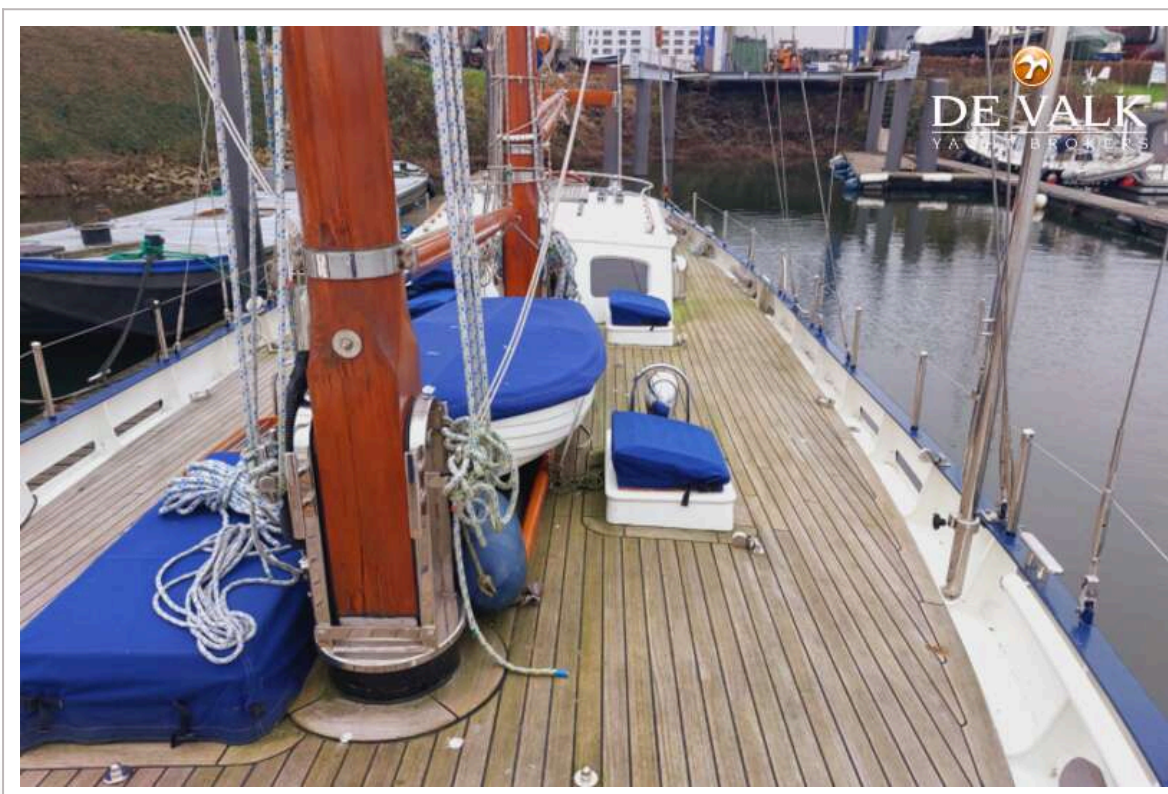
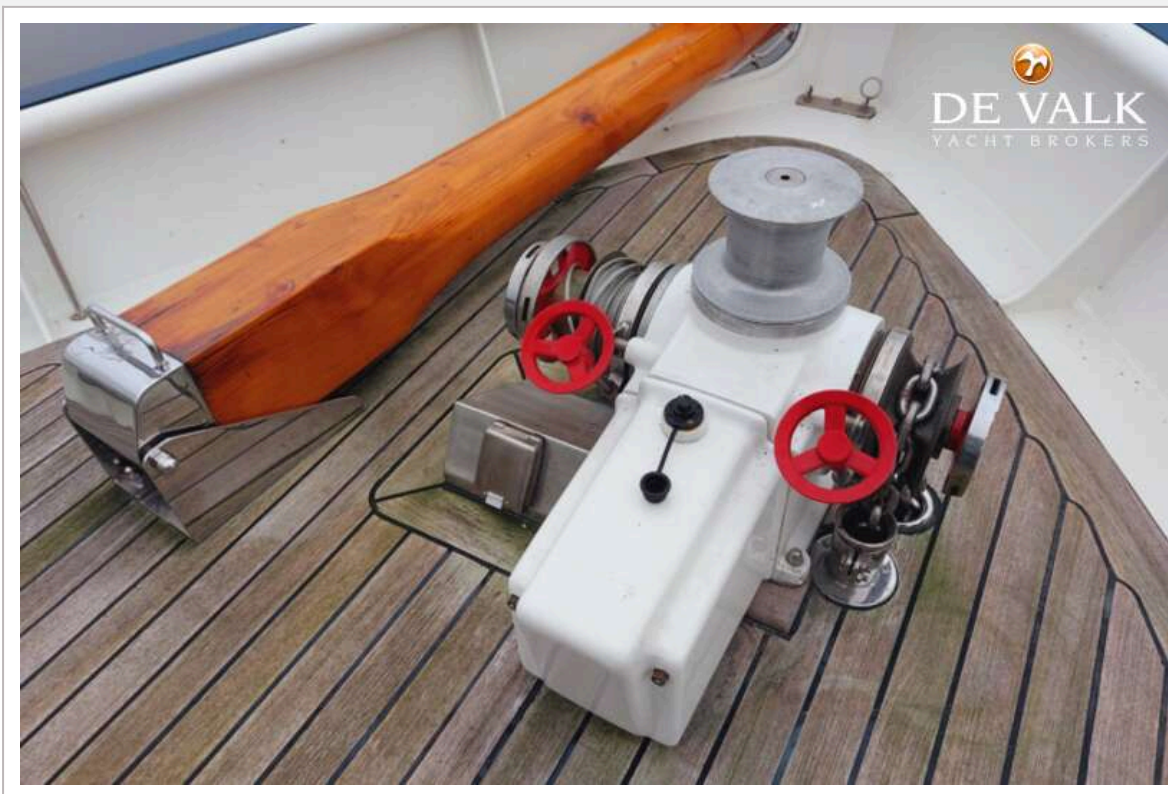




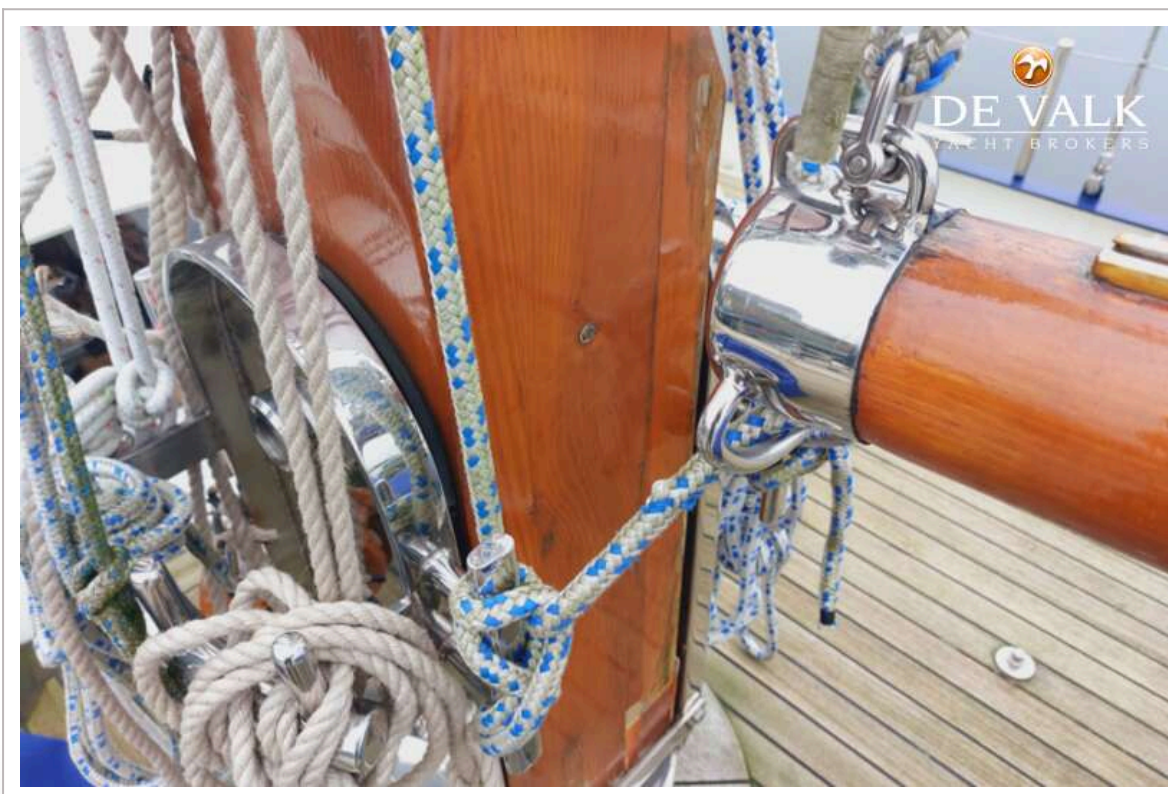
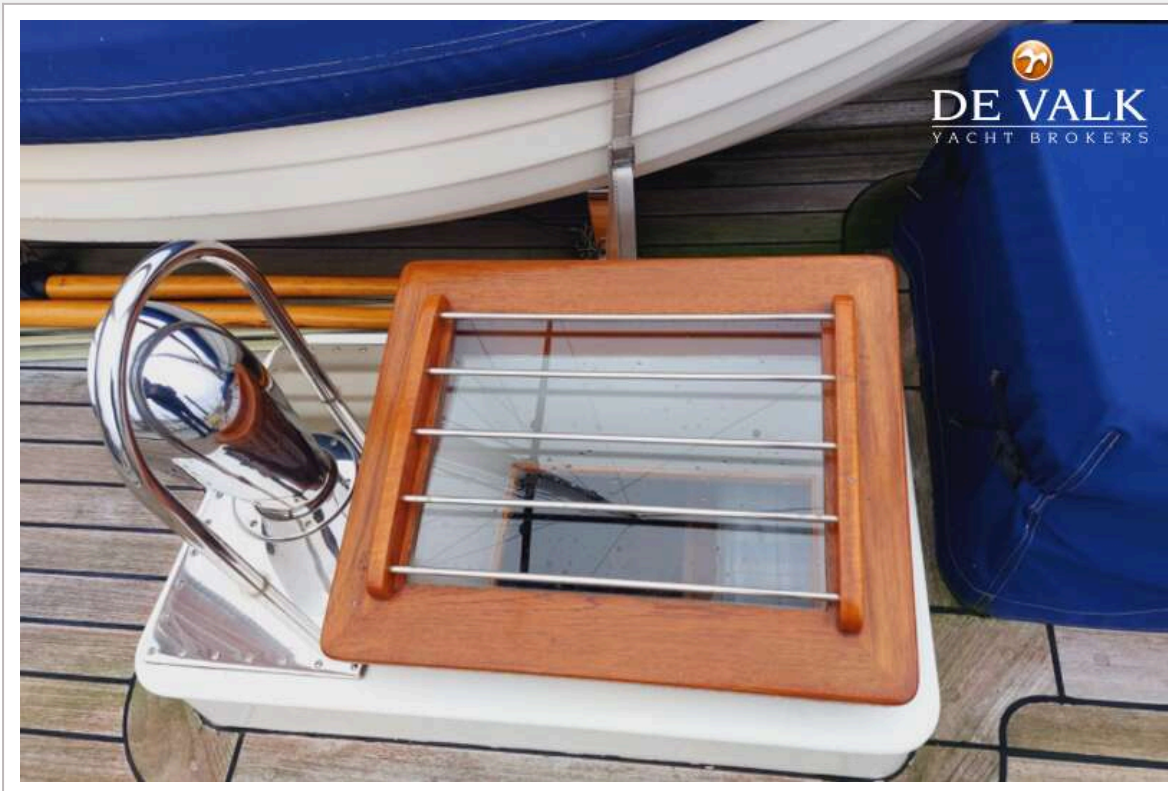






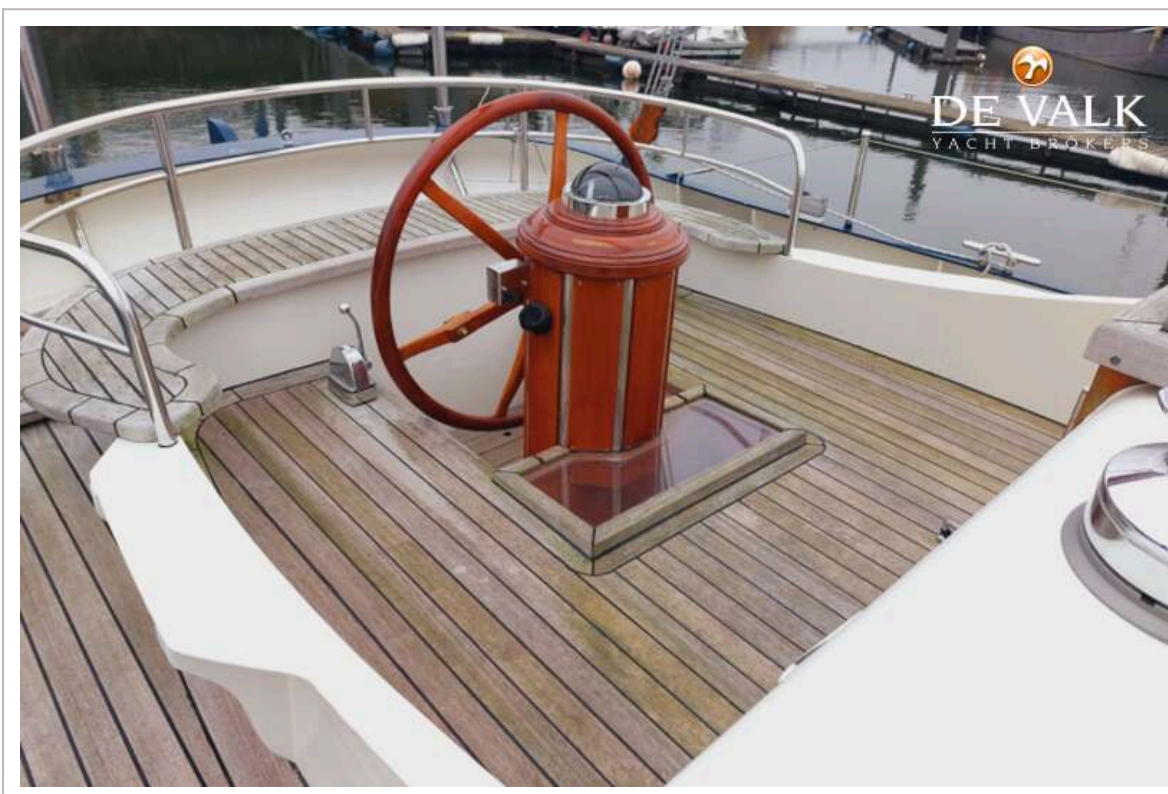
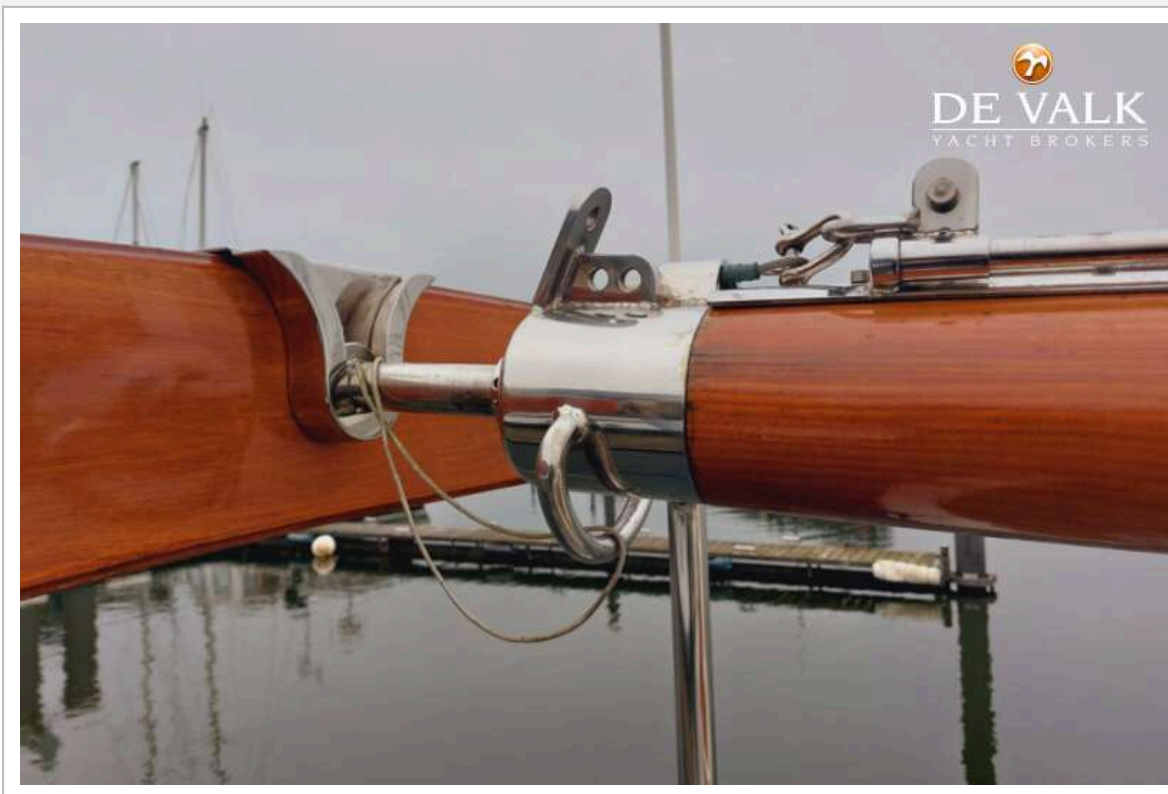






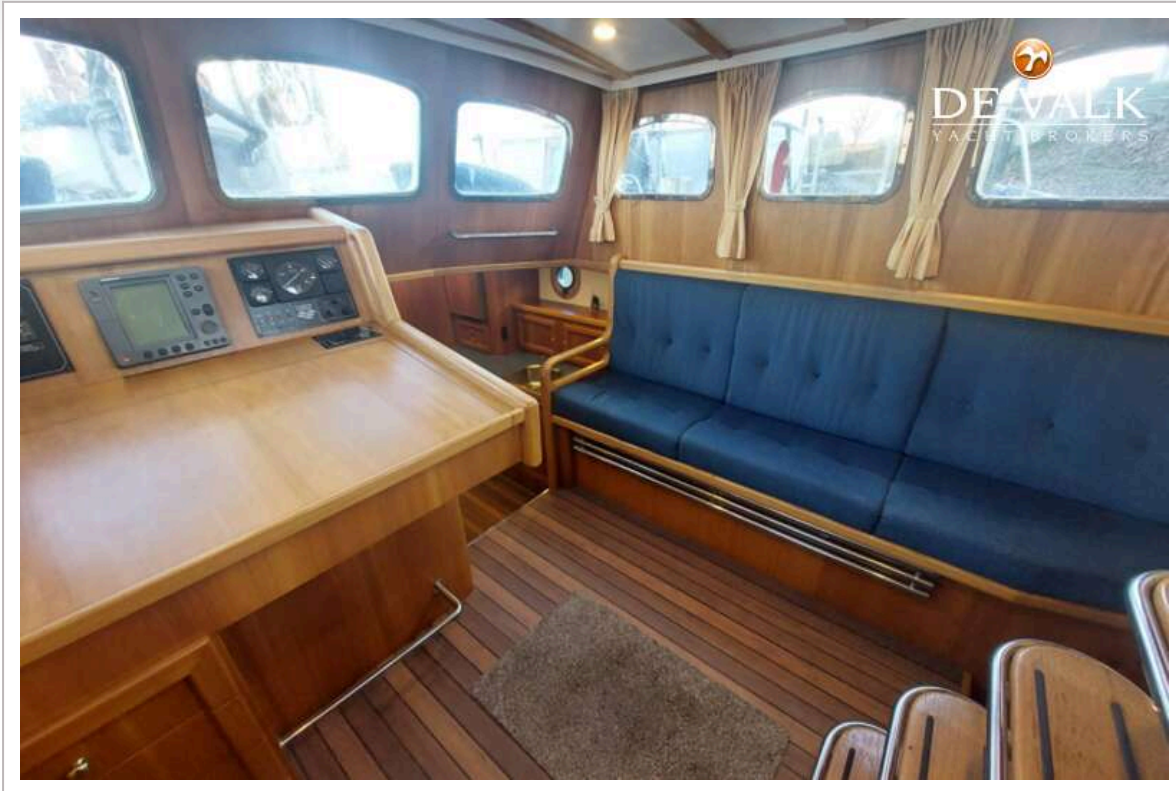






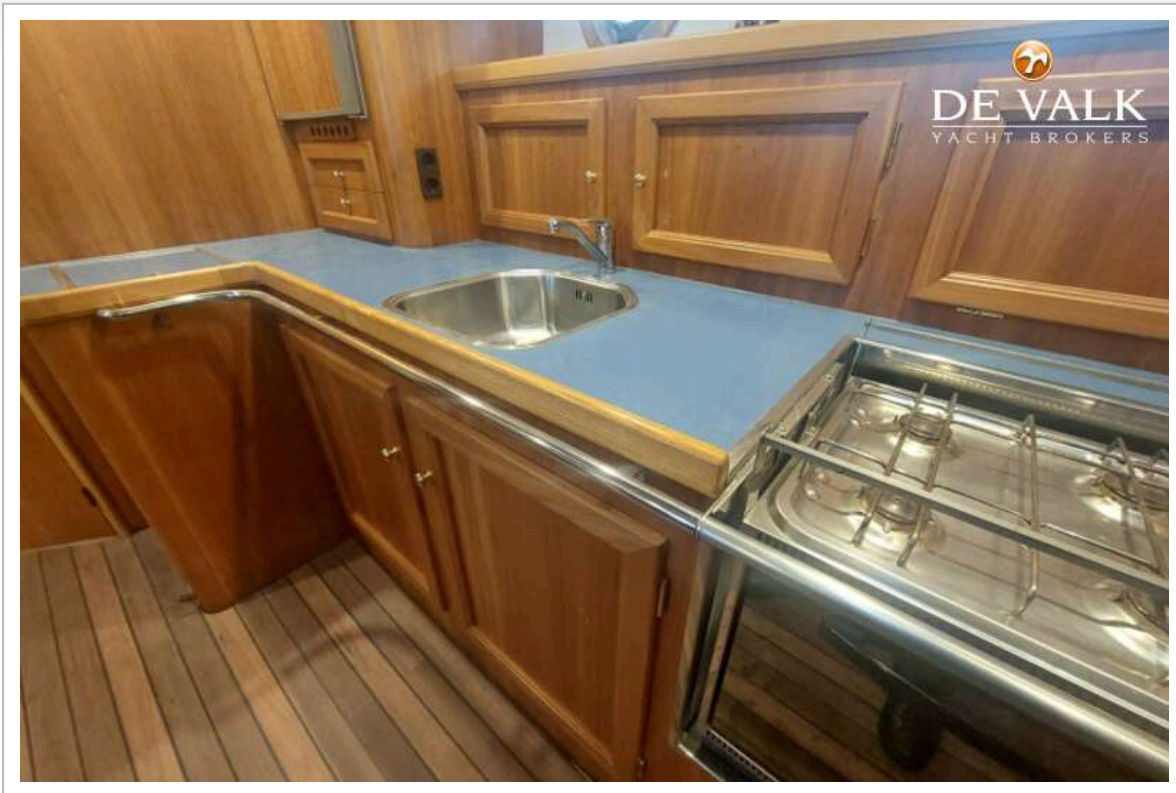


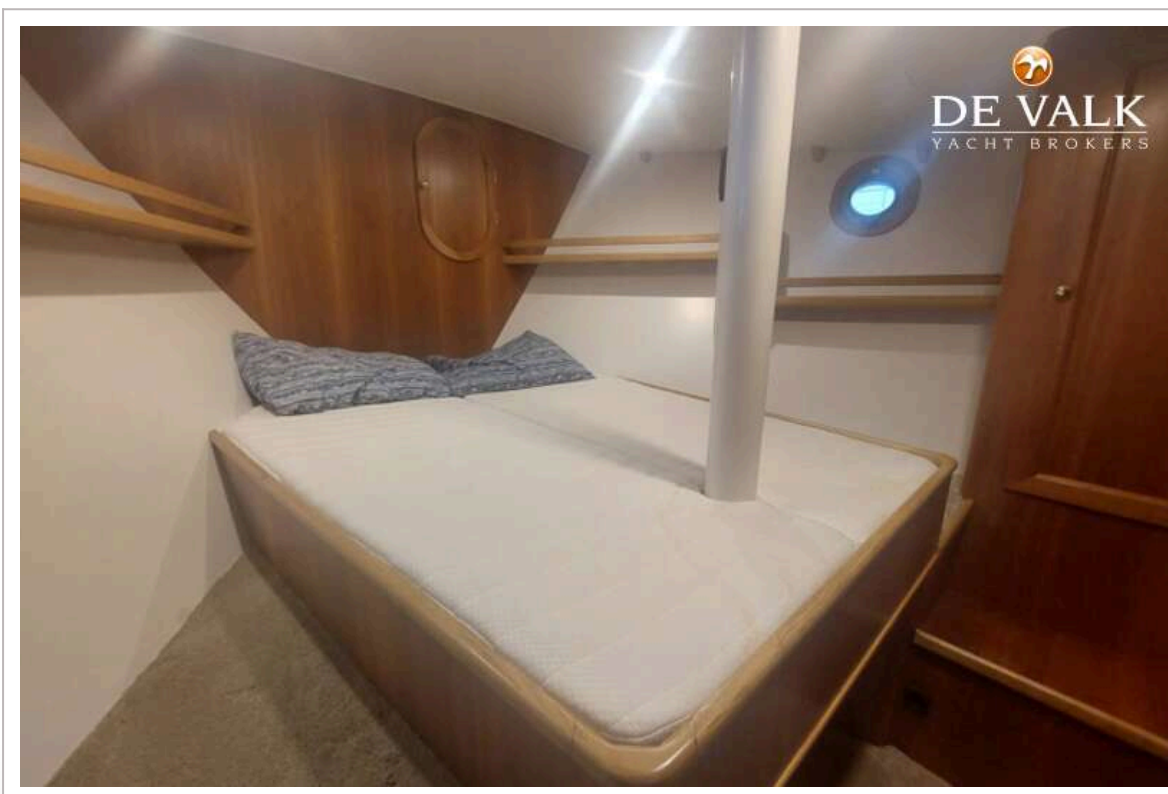


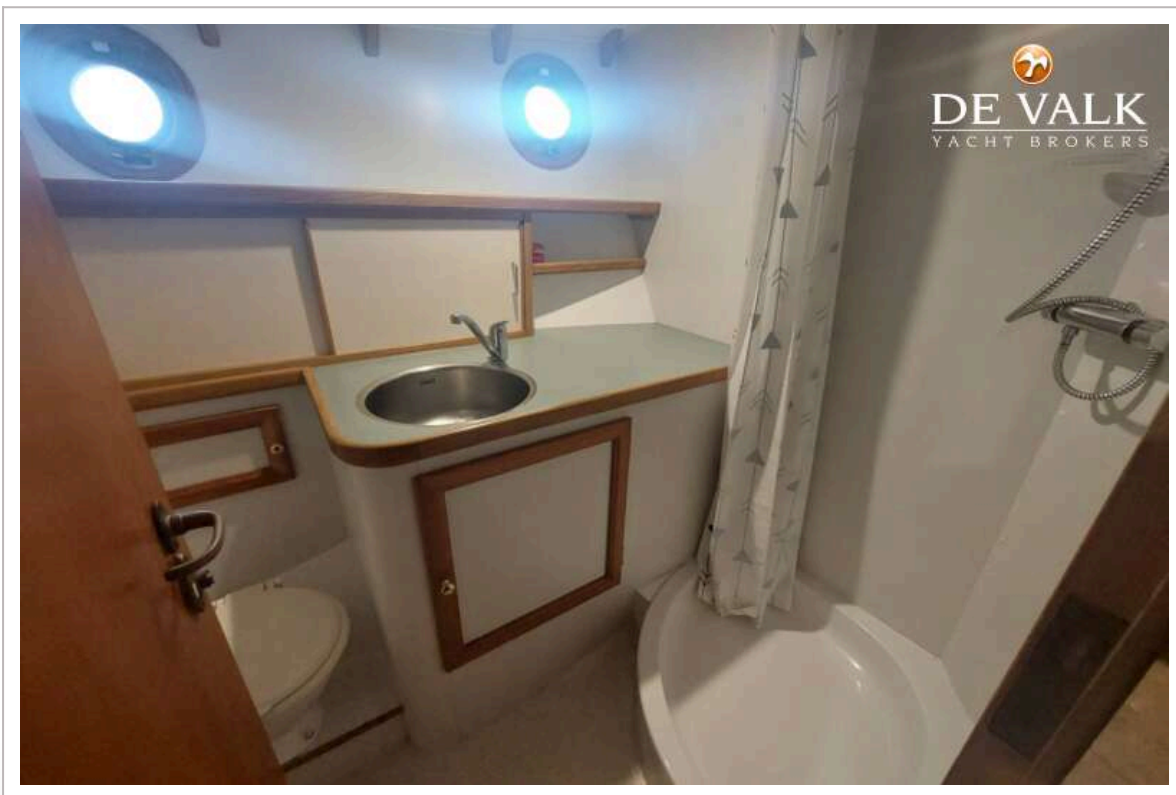
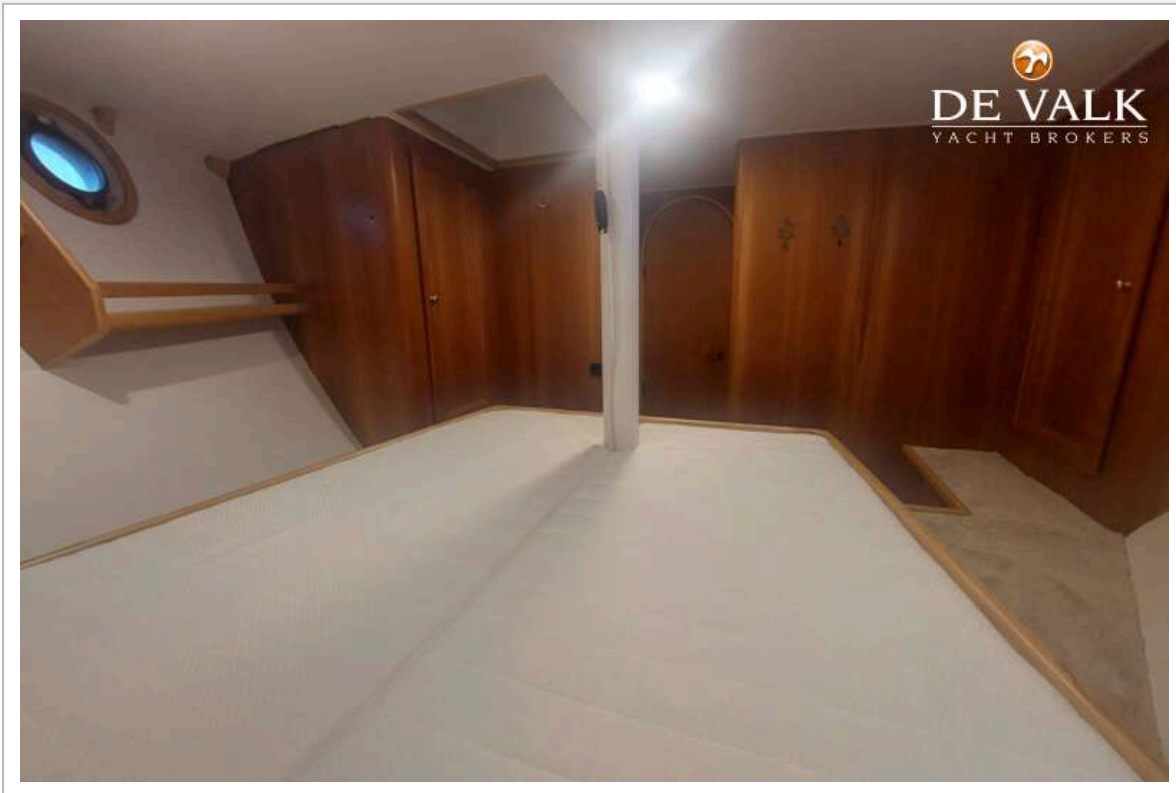




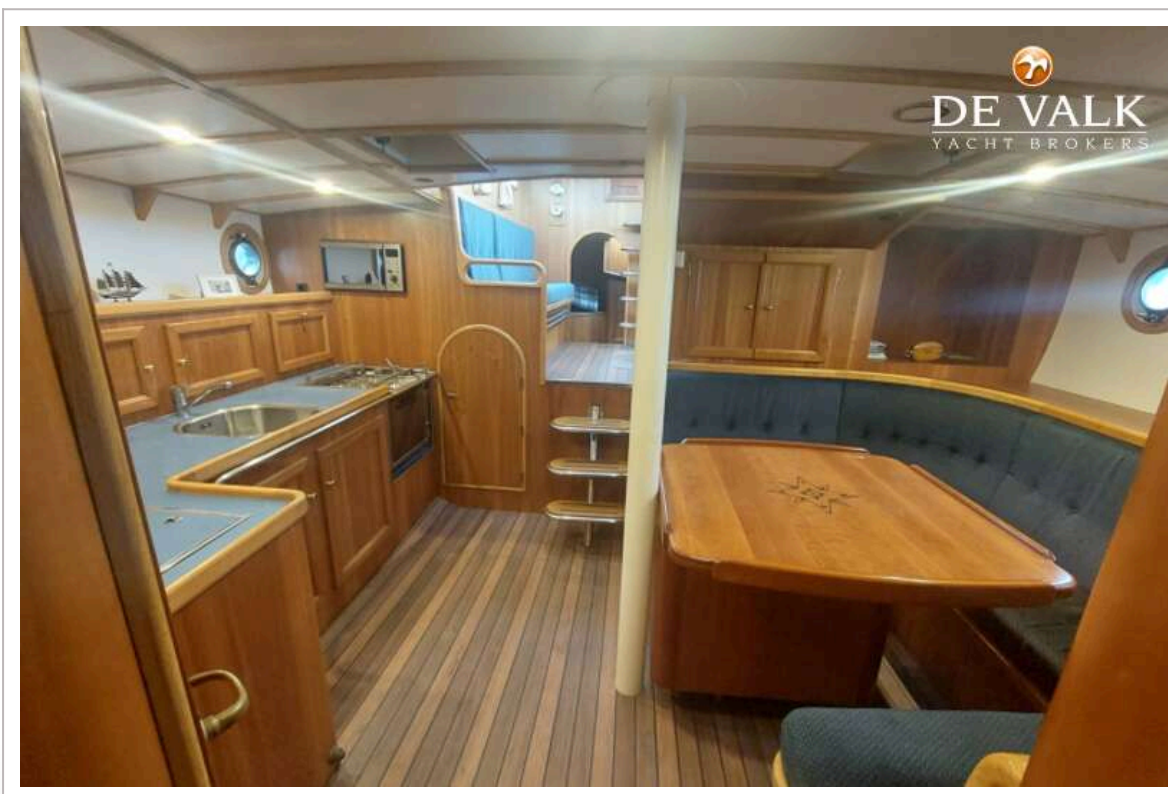






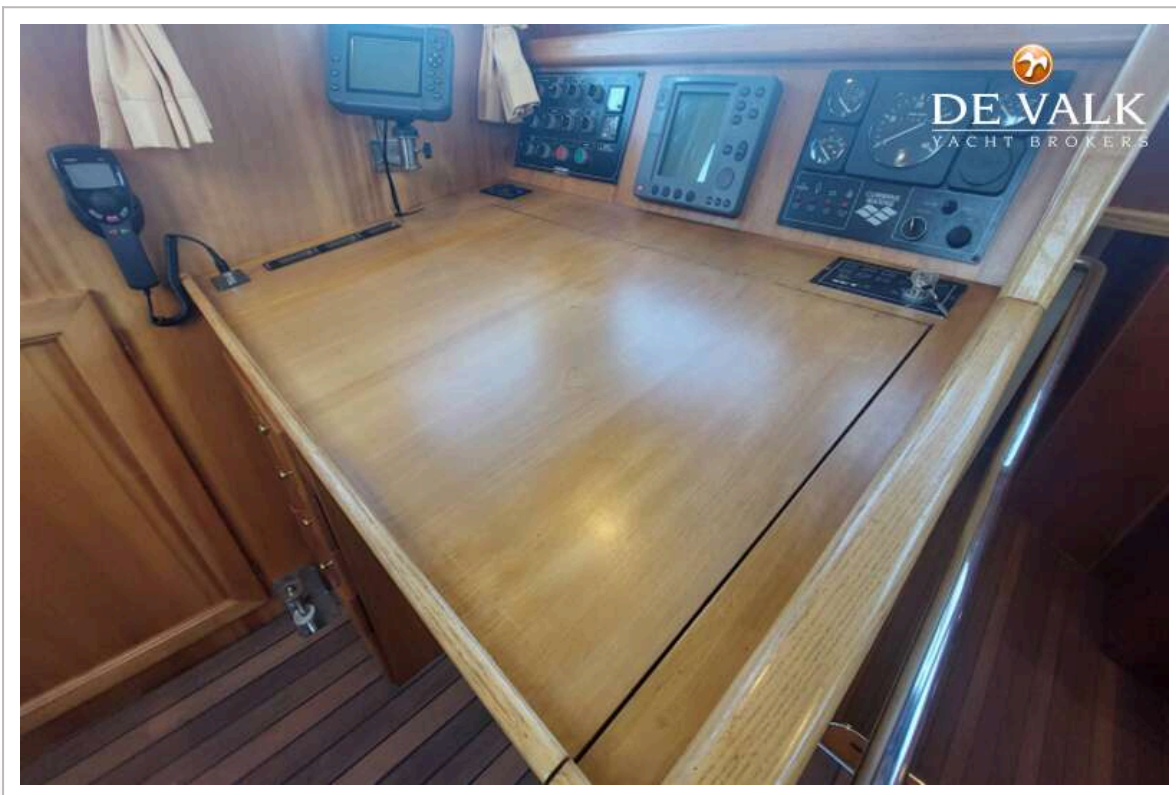
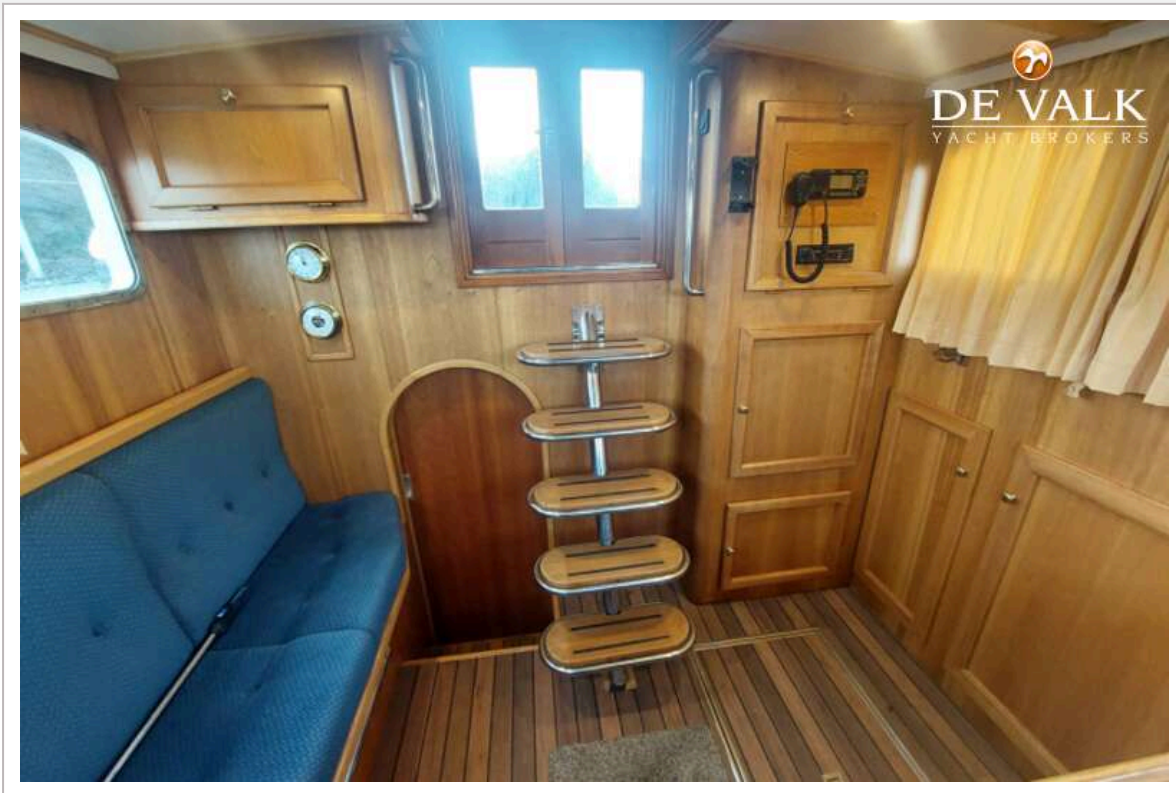


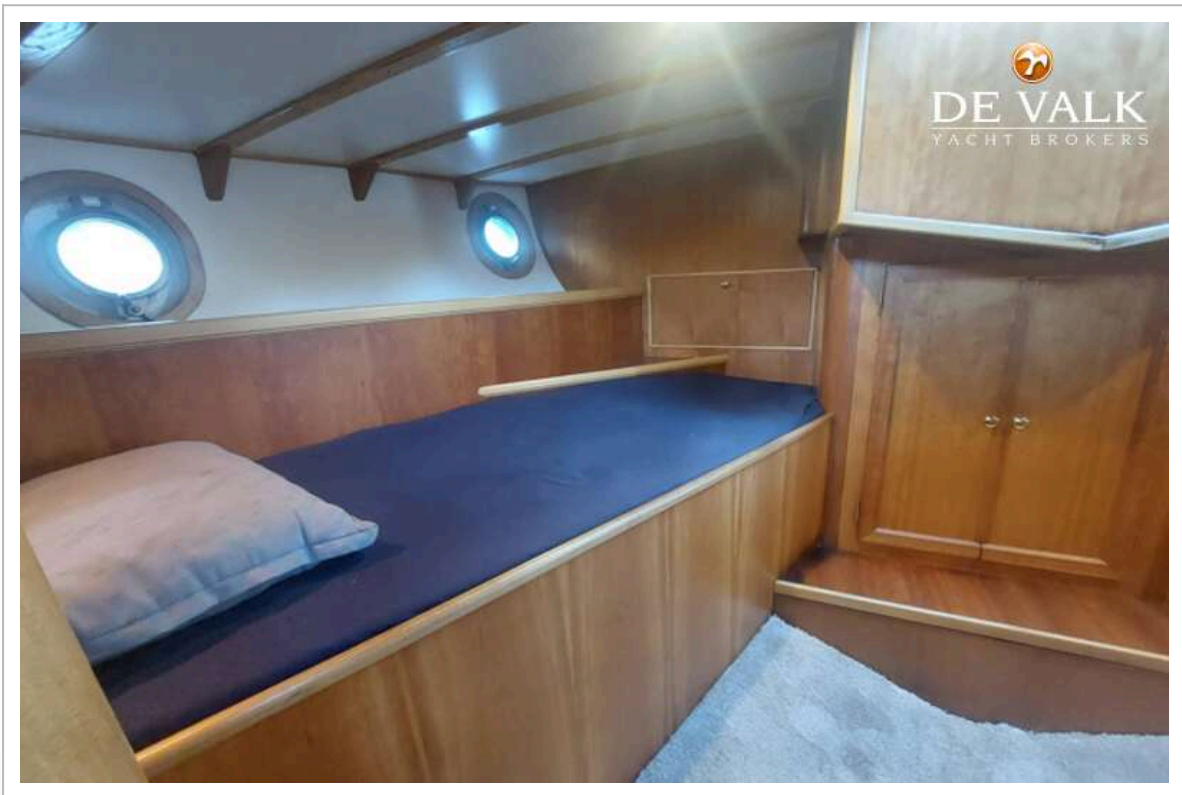
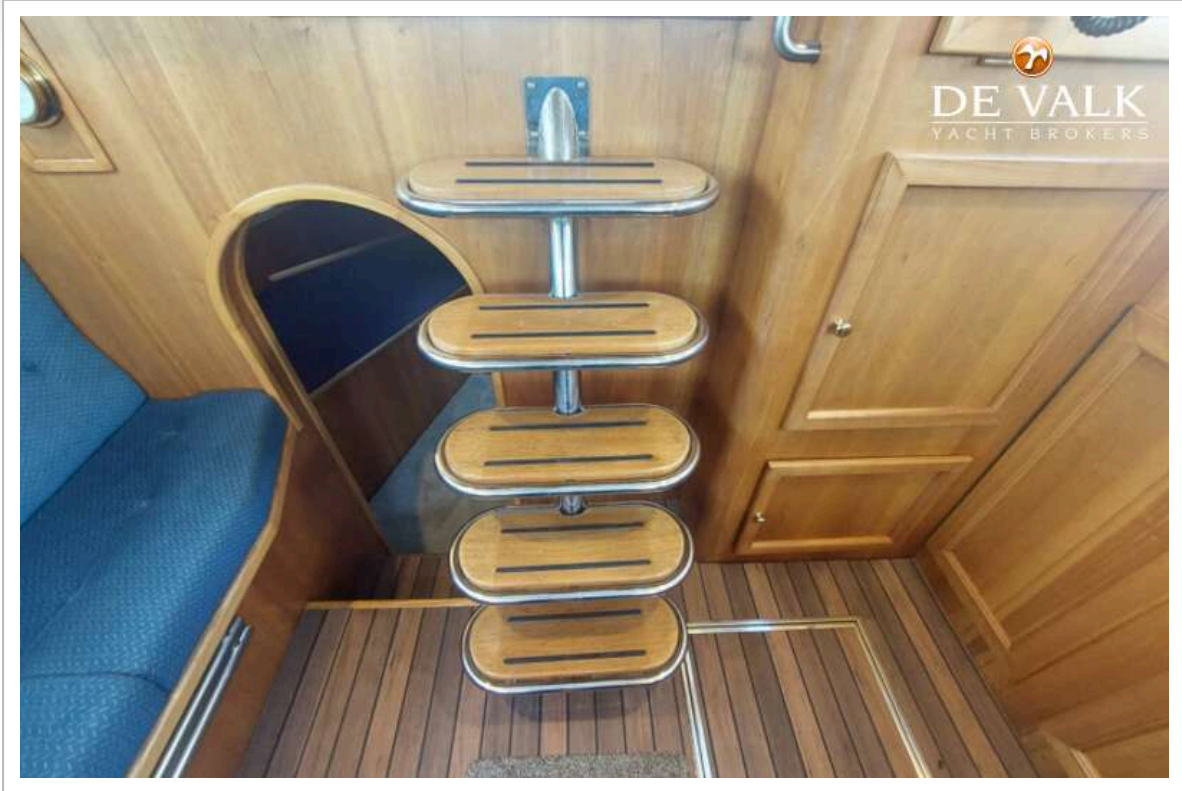






# BEELDSNIJDER PILOTHOUSE SCHOENER 50







# BEELDSNIJDER PILOTHOUSE SCHOENER 50

