



HALLBERG RASSY 352



DE VALK
YACHT BROKERS

HALLBERG RASSY 352

BROKER'S COMMENTS

Introduced in 1979 as the yacht for the future, the Hallberg Rassy 352 is probably the most successful model of the famous Swedish yard. The much appreciated Swedish craftsmanship and quality remains plus seaworthy, sturdy and well balanced design by Olle Enderlein. Below decks non compromising accommodations for family and friends. The inside woodwork has been kept nicely and in 2nd ownership carefully handled. A yacht that will bring her crew safely to any port of call. Become part of the Hallberg Rassy family, you will like it.

Nick Lanting

SPECIFICATIONS

Dimensions	10.54 x 3.38 x 1.67 (m)	Builder	Hallberg Rassy Varv AB
Built	1987	Cabins	2
Material	GRP	Berths	6
Engine(s)	1 x Volvo Penta 2003T diesel	Hp/Kw	43.00 (hp), 31.61 (kw)
Asking price	sold (VAT)	Lying	at sales office

CONTACT

Sales office	De Valk Sint Annaland	Telephone	+31 166 601 000
Address	Koelhuisweg 4 4697 RM Sint Annaland The Netherlands	E-mail	sintannaland@devalk.nl

DISCLAIMER

These particulars are given in good faith as supplied but cannot be guaranteed.



GENERAL

Model	HALLBERG RASSY 352
Type	sailing yacht
LOA (m)	10,54
LWL (m)	8,70
Beam (m)	3,38
Draft (m)	1,67
Air draft (m)	15,63
Headroom (m)	1,87
Year built	1987
Builder	Hallberg Rassy Varv AB
Country	Sweden
Designer	Christoph Rassy / Olle Enderlein
Displacement (t)	6,7
Ballast (tonnes)	cast iron 3
CE norm	NA
Hull material	GRP
Hull colour	white
Hull shape	S-bilged
Keel type	long keel
Superstructure material	GRP
Rubbing strake	Bronze
Deck material	GRP
Deck finish	teak
Superstructure deck finish	teak
Cockpit deck finish	teak
Antifouling (year)	2020
Window frame	aluminium
Window material	perspex
Deckhatch	yes
Portholes	aluminium



Fuel tank (litre)	150
Fuel tank 2 (litre)	80
Level indicator (fuel tank)	VDO
Freshwater tank (litre)	300
Level indicator (freshwater)	VDO
Wheel steering	cable steering Solimar
Outside helm position	cable steering
Emergency tiller	yes
More info on paintwork	Hull and superstructure painted 2 comp system (2002)
Extra info	Lower rudderbearing done 2017
Extra info	Seacocks renewed
Extra info	Lloyds approved construction

ACCOMMODATION

Cabins	2
Berths	6
Interior	teak
Floor	teak and holly
Open cockpit	yes
Saloon	Back cushions lift up to create extra beds
Headroom saloon (m)	1,87
Heating	diesel ducted hot air Eberspaecher D3L
Navigation center	yes
Chart table	yes
Dinette	yes
Galley	yes
Countertop	wood
Sink	stainless steel 2 x
Cooker	calor gas Optimus 3-burner
Oven	Optimus
Fridge	Frigomatic 12V toplayer



Hot water system	220V + engine
Water pressure system	electrical
Manual and/or foot pump	Foot pump
Owners cabin	v-bed Aft, headroom 1,41 m
Bed length (m)	2,10 x 2,50 m
Wardrobe	drawers and shelves
Toilet system	manual
Extra info	Starboard bed is wider than standard
Guest cabin 1	v-bed Forward
Bed length (m)	2,03 x 2,03
Wardrobe	hanging/drawers/shelves
Bathroom	shared
Toilet	shared
Toilet system	manual Jabsco
Wash basin	in the bathroom
Shower	shared
Extra info	Headroom 1,55

MACHINERY

No of engines	1
Make	Volvo Penta
Type	2003T
HP	43
kW	31,61
Fuel	diesel
Year installed	1987
Maximum speed (kn)	7
Cruising speed (kn)	6
Consumption (l/hr)	3
Engine hours	2153
Engine cooling system	freshwater heat exchanger



Drive	shaft
Shaft seal	Volvo Penta (appr. 2015)
Engine controls	bowden cable
Gearbox	mechanical Volvo Penta
Exhaust	watercooled
Propeller type	fixed
Propeller blades	3
Propeller shaft material	stainless steel
Shaft lubrication	
Manual bilge pump	yes
Electrical installation	12V & 220V
Start battery	1 x 85 Ah
Service battery	1 x 124 Ah
Battery charger	Mastervolt 12V/25A
Shorepower	with cable
Extra info	Dual fuel filter system

NAVIGATION

Compass	C. Plath (needs service)
Depth sounder	VDO
Log	VDO
Windset	VDO (wind direction not working)
Fish finder	M56
VHF	Icom IC-M601 + Shipmate RS8000 (not connected to aerial)
Autopilot	Autohelm 6000
Radar	Furuno (needs service)
Navtex	ICS Nav6
Navigation lights	yes

EQUIPMENT

Fixed windscreen	yes
-------------------------	-----



Sprayhood	Appr. 2016
Cockpit cover	Appr. 2016
Cockpit cushions	yes
Cockpit table	yes
Boarding ladder	stainless steel
Bow ladder	yes
Anchor	CQR Plough 22,5 kg
Anchor chain	40 meter (8 mm)
Anchor chain	Approx. 40mtr
Windlass	electrical
Capstan	On windlass
Sea railing	wire 2015 new wires
Grab rail (superstructure)	teak
Railing side opening gates	2 x
Pushpit	With pensionado seats
Pulpit	yes
Lifebuoy	1 x
Danbuoy	1 x
Radar reflector	yes
Fenders	yes
Mooring lines	yes
Radio-cd player	yes
Cockpit speakers	2 x
Fire extinguisher	yes
Latest extinguisher survey	Expired

RIGGING

Rigging	sloop
Standing rigging	2017 new
Brand mast	Seldén
Material mast	aluminium



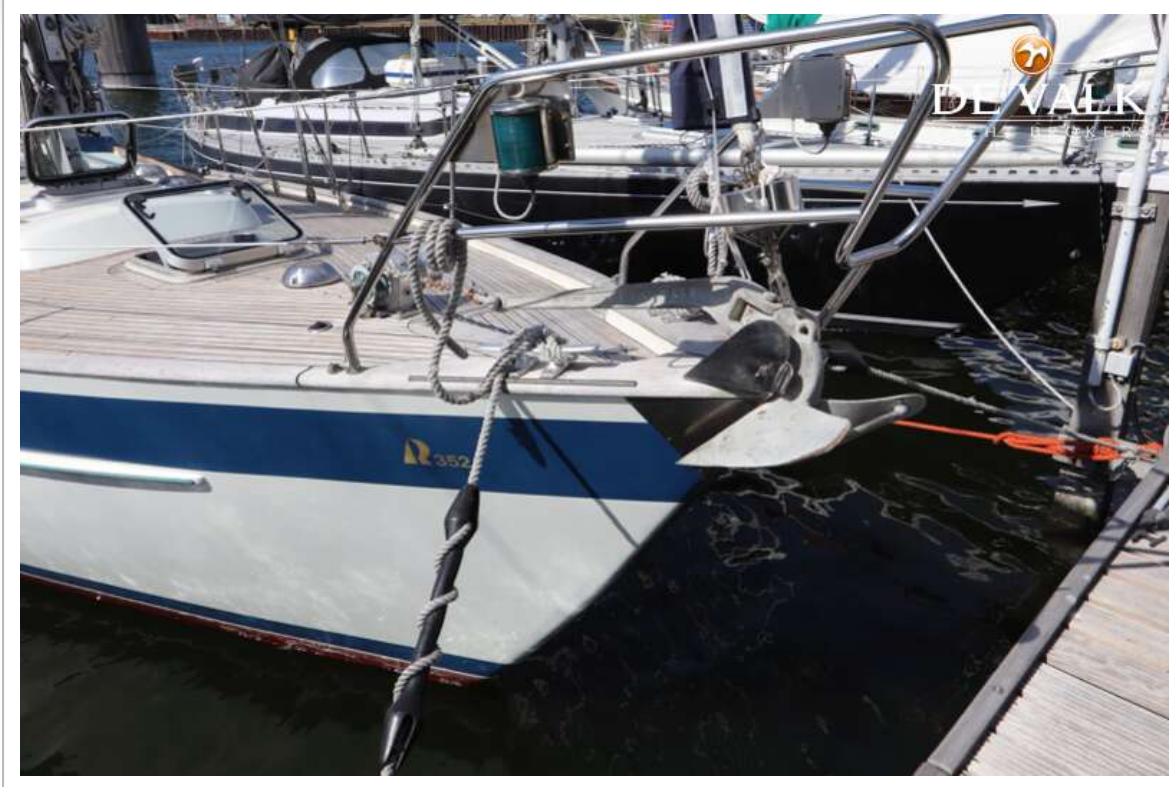
Spreaders	2 x 2
Mainsail	Lion Sails (appr. 2005)
Stoway mast	yes
Jib	Work-jib
High aspect	Lion Sails (appr. 2005)
Genoa furler	Reckmann
Genoa cover	yes
Stormjib	yes
Reefing System	main in-mast furling Operation from cockpit
Backstay adjuster	hydraulic Navtec
Boomvang	mechanical and tackle Rodkicker
Genoa sheetwinches	2 x Lewmar 46 CST
Halyard winches	2 x Lewmar 16
Reefing winch	1 x Lewmar
Spi-pole	aluminium
Isolated backstay	Navtec



HALLBERG RASSY 352



HALLBERG RASSY 352



HALLBERG RASSY 352



HALLBERG RASSY 352



HALLBERG RASSY 352



HALLBERG RASSY 352



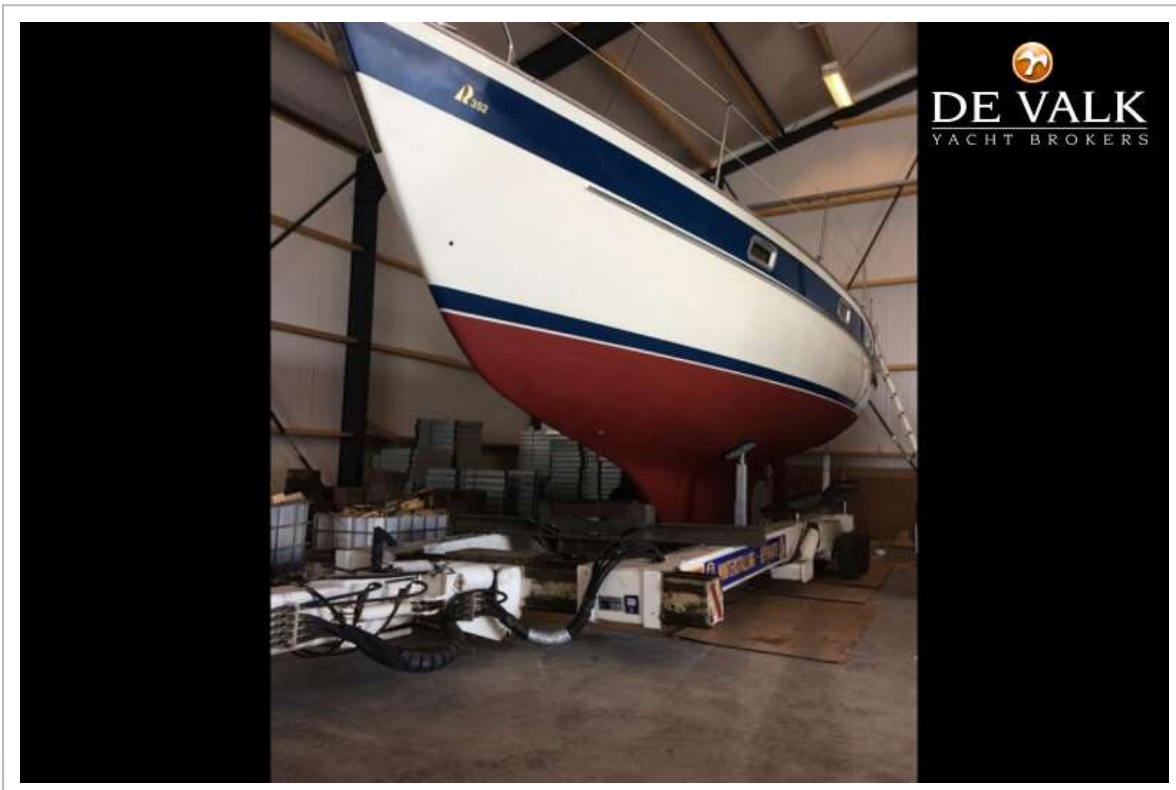
HALLBERG RASSY 352



HALLBERG RASSY 352



HALLBERG RASSY 352



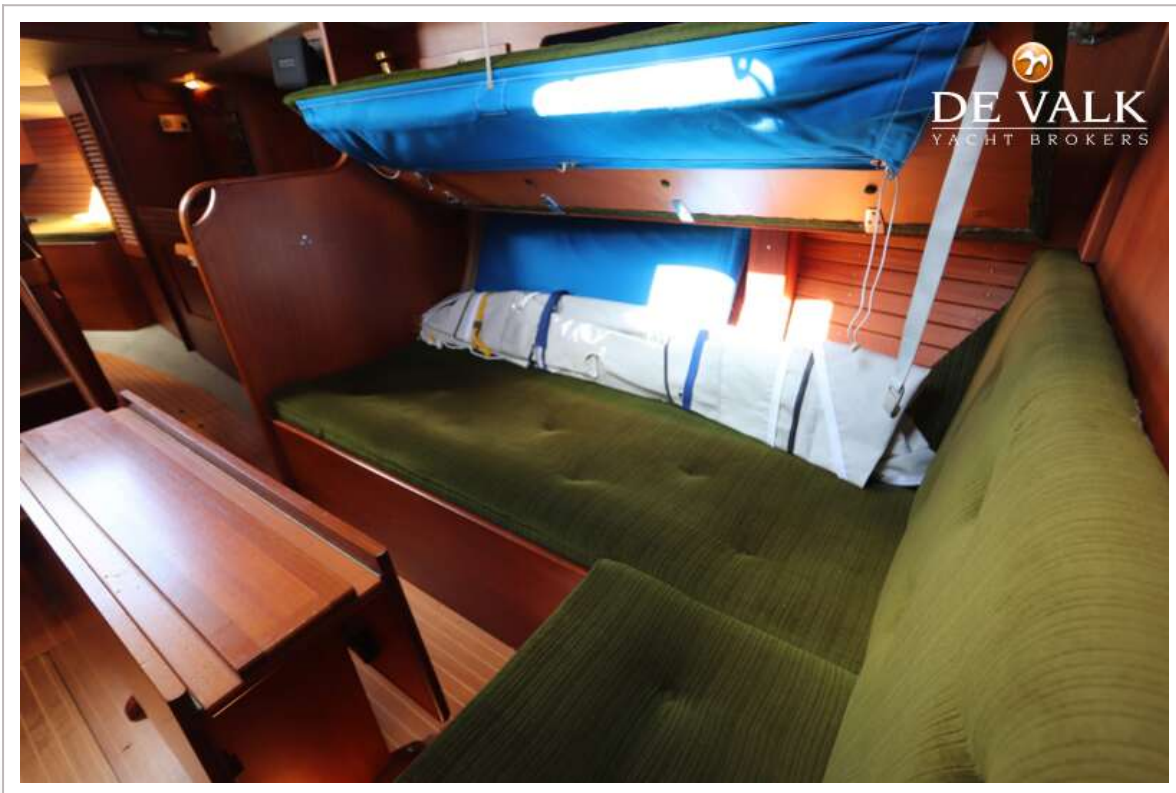
HALLBERG RASSY 352



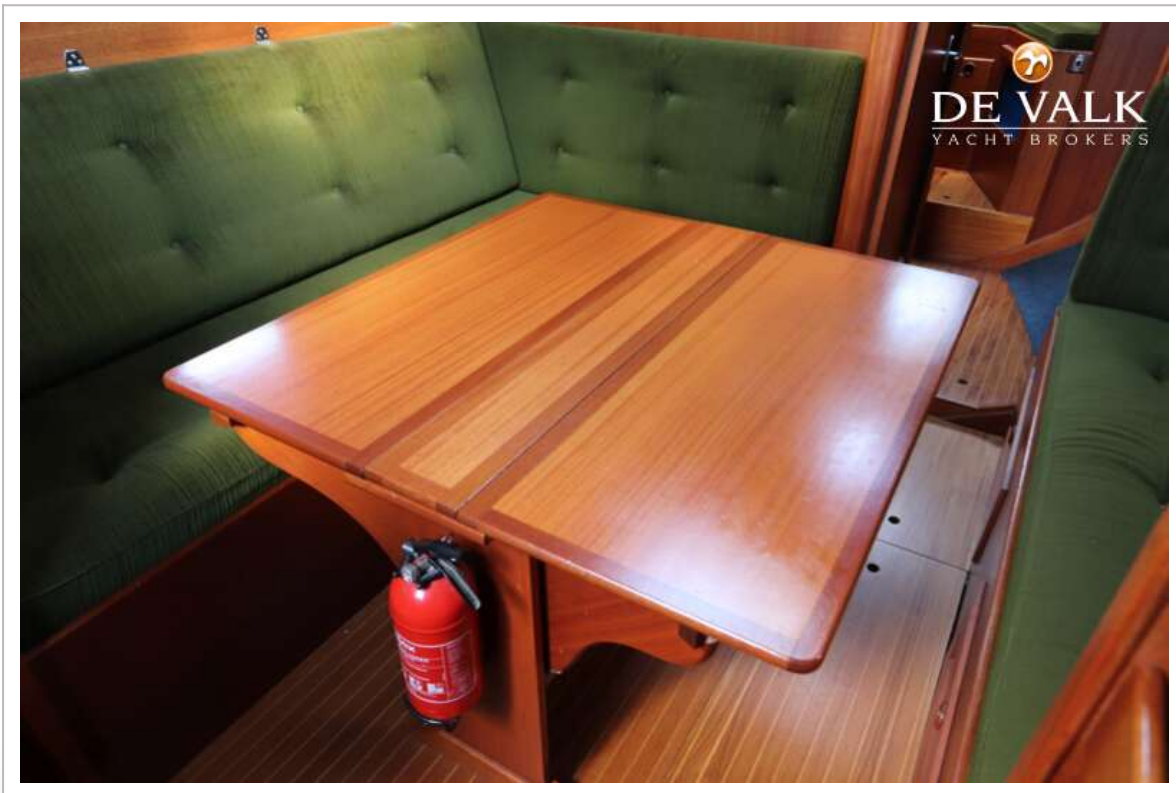
HALLBERG RASSY 352



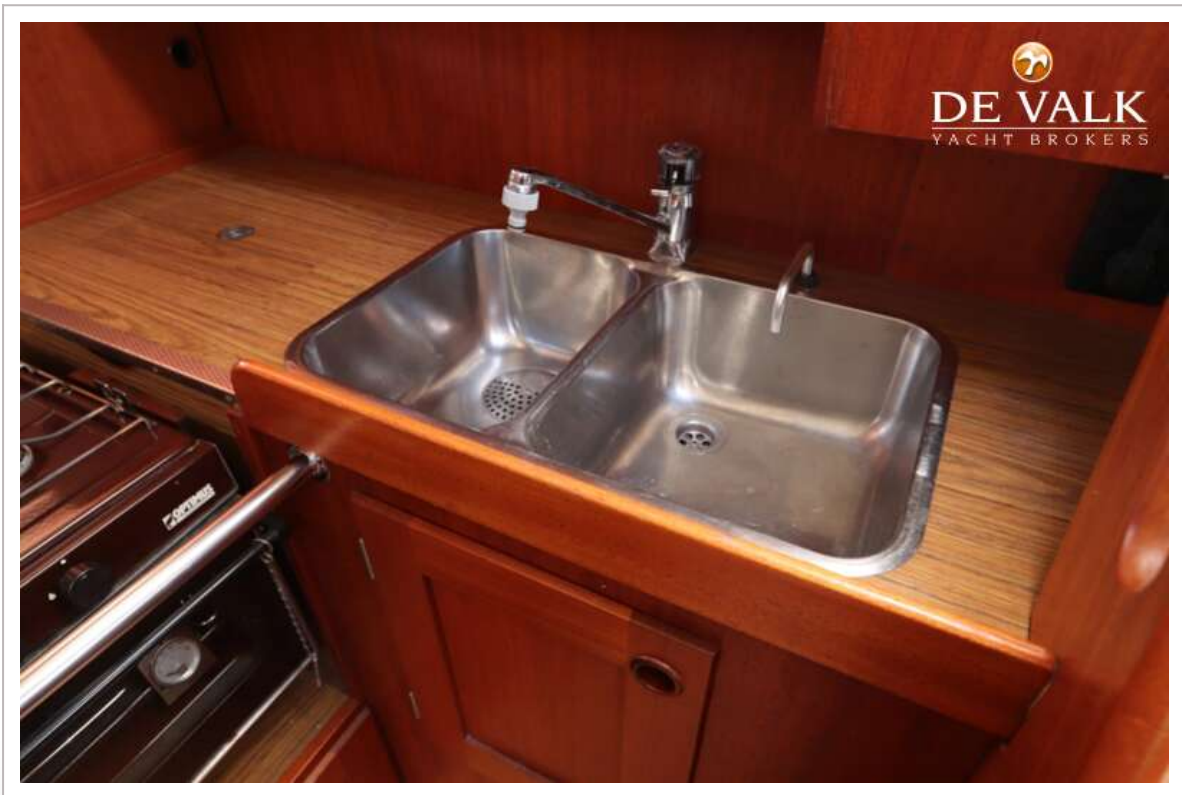
HALLBERG RASSY 352



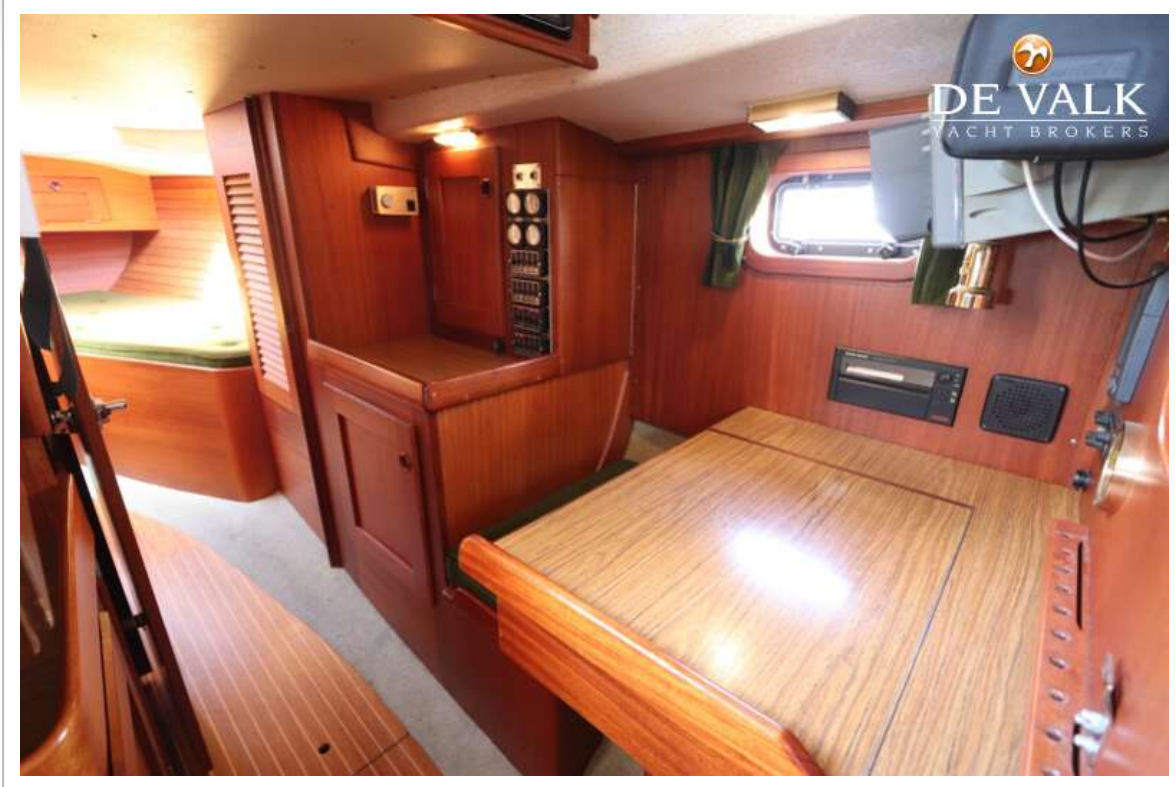
HALLBERG RASSY 352



HALLBERG RASSY 352



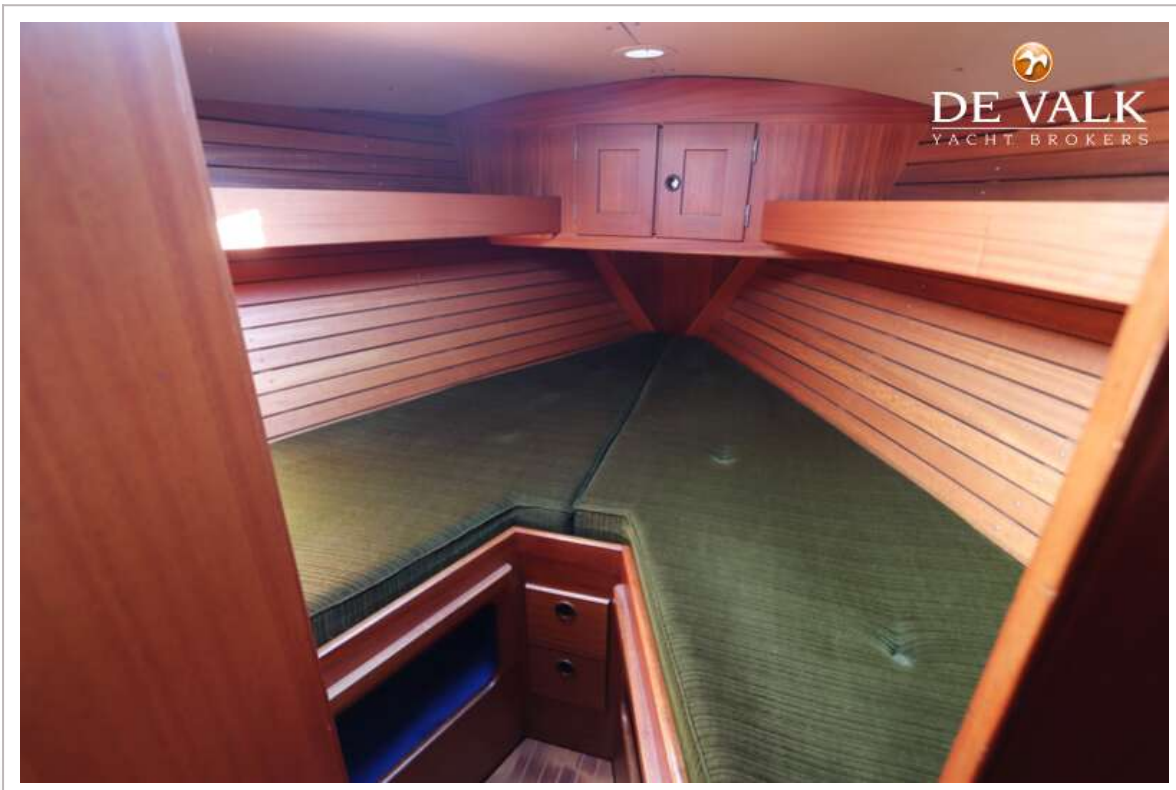
HALLBERG RASSY 352



HALLBERG RASSY 352



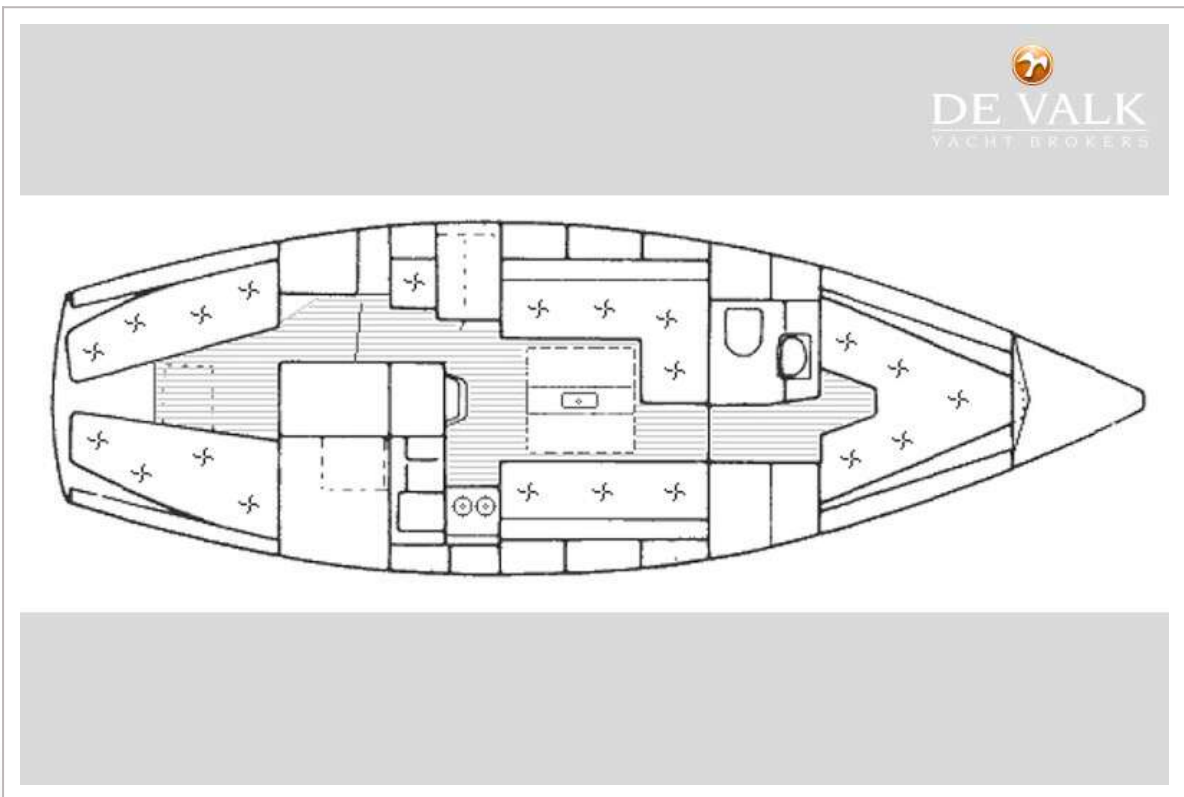
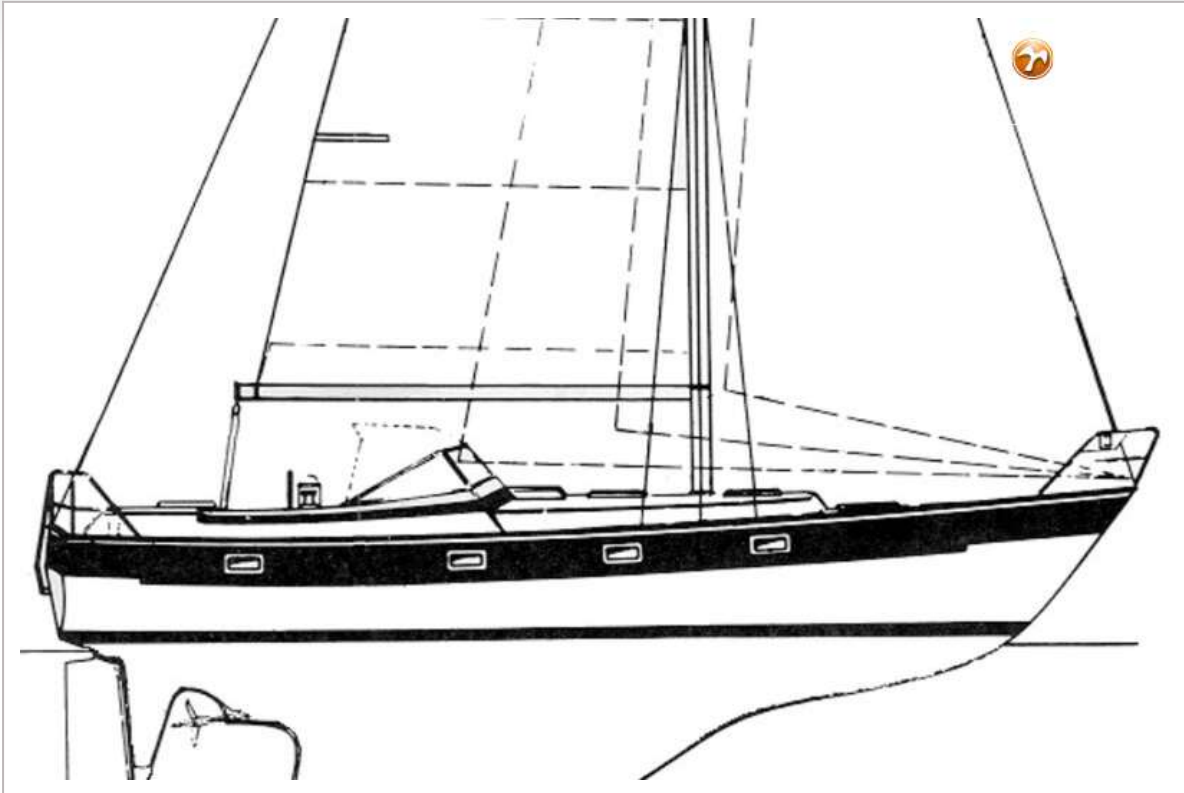
HALLBERG RASSY 352



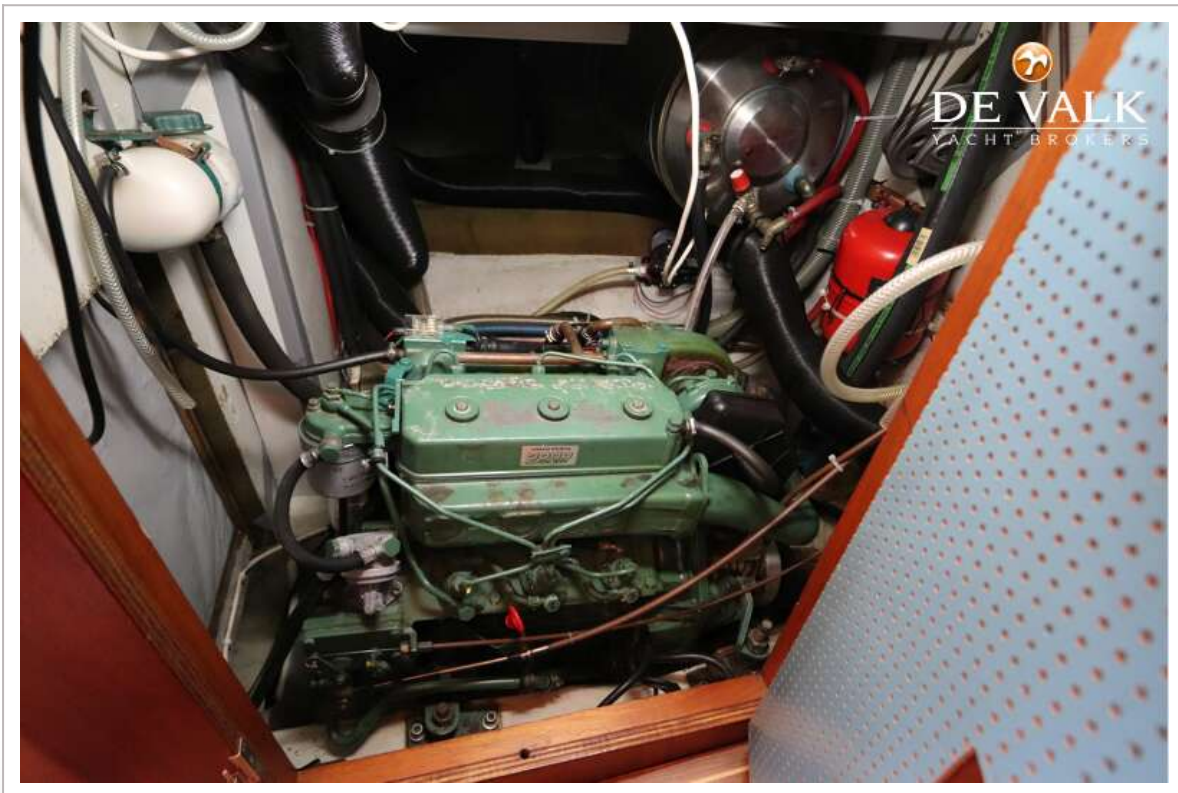
HALLBERG RASSY 352



HALLBERG RASSY 352



HALLBERG RASSY 352



HALLBERG RASSY 352

