



DE VALK
YACHT BROKERS



GRAND BANKS 42 CLASSIC



DE VALK
YACHT BROKERS

GRAND BANKS 42 CLASSIC

BROKER'S COMMENTS

A true and ultimate gentlemen's cruiser trawler model from the highly regarded Grand Banks 42 series. The Grand Banks 42 Classic offers an easy access on deck, twin helm positions, spacious saloon, fully equipped owners cabin with excellent ensuite facilities and a large aft deck outside. The two cabin layout also makes her ideal for long and comfortable family voyages. With her two reliable Ford Lehman diesels, she is easy to maneuver. Available for viewing by appointment.

Jan-Ward van Dantzig

SPECIFICATIONS

Dimensions	12.75 x 4.15 x 1.27 (m)	Builder	American Marine Ltd.
Built	1979	Cabins	2
Material	GRP	Berths	6
Engine(s)	2 x Ford Lehman 2712E diesel	Hp/Kw	2 x 120 (hp), 88.20 (kw)
Asking price	sold (VAT)	Lying	elsewhere / not at sales office

CONTACT

Sales office	De Valk Sint Annaland	Telephone	+31 166 601 000
Address	Koelhuisweg 4 4697 RM Sint Annaland The Netherlands	E-mail	sintannaland@devalk.nl

DISCLAIMER

These particulars are given in good faith as supplied but cannot be guaranteed.



GRAND BANKS 42 CLASSIC

GENERAL

Model	GRAND BANKS 42 CLASSIC
Type	motor yacht
LOA (m)	12,75
LWL (m)	12,34
Beam (m)	4,15
Draft (m)	1,27
Air draft (m)	7,50
Air draft min (m)	3,75
Headroom (m)	1,95
Year built	1979
Builder	American Marine Ltd.
Country	Singapore
Designer	Ken Smith
Displacement (t)	15,5
CE norm	NA
Hull material	GRP
Hull colour	white
Hull shape	hard chine
Keel type	long keel
Superstructure material	GRP
Rubbing strake	Copper
Deck material	GRP
Deck finish	teak (needs attention)
Superstructure deck finish	teak (needs attention)
Antifouling (year)	2023
Window frame	wood
Window material	tempered glass - safety glass
Deckhatch	1 x with a blue cover
Portholes	wood
Flybridge	With teak (needs attention)



GRAND BANKS 42 CLASSIC

Flybridge cover	Blue (over the front side, over the seats and along the railing)
Radar arch	collapsible (manual)
Mast can be lowered	manual
Steadying sail with mast	With a blue sail cover and 2 x spreader light
Fuel tank (litre)	stainless steel 1 x 750 (new in 2022)
Fuel tank 2 (litre)	steel 1 x 1120
Level indicator (fuel tank)	Gauge glass
Freshwater tank (litre)	steel 2 x 500
Blackwater tank (litre)	polyethylene 50 (never used)
Blackwater tank extraction	deck extraction
Wheel steering	cable steering
Inside helm position	Varnished teak steering wheel
Flybridge helm position	cable steering Varnished teak steering wheel (with a blue cover)
Emergency tiller	yes
More info on hull	An osmosis treatment was carried out on the underwater in 2007.
More info on paintwork	The hull has been painted (white).
Extra info	Third owner since 1997.
Extra info	Blue aft deck railing dodgers (needs some stitching)
Extra info	The boat has been stored inside during very winter.

ACCOMMODATION

Cabins	2
Berths	6
Interior	teak (in nice condition)
Floor	teak (in nice condition)
Aft deck	With teak (needs attention)
Pilot house	With twin entrance doors - Headroom 1,95 m
Saloon	(in nice condition)
Headroom saloon (m)	1,95
Heating	central heating Kabola with radiators in both bathrooms and in the saloon



GRAND BANKS 42 CLASSIC

Aft Cabin	(very spacious)
Dinette	yes
Opening door to aft deck	(in the aft cabin)
Galley	On port side - Headroom : 1,97 m
Countertop	Duropol (wood look-a-like)
Sink	stainless steel 1 x
Cooker	calor gas 3 x burner
Extractor	(12 Volt)
Gas alarm	Truma
Fridge	Isotherm - front loader (new in 2015)
Freezer	Small freezer in the fridge
Hot water system	220V + engine Vetus boiler (approx. 60 L)
Water pressure system	electrical Hydrofoor pressurized water (Original Speck Pumpmeister)
Owners cabin	double bed + single bed In the aft cabin - Headroom : 1,93 m
Bed length (m)	2,00 x 1,45 & 2,05 x 0,95
Wardrobe	hanging/drawers/shelves
Bathroom	en suite Headroom : 1,93 m
Toilet	en suite
Toilet system	vacuum Electric
Wash basin	in the bathroom
Shower	en suite Headroom : 1,92 m
Guest cabin 1	twin single In front cabin + extra single bed, total = 3)- Headroom: 2,09 m
Bed length (m)	2,08 x 0,83 & 2,05 x 0,87 & 1,91 x 0,70
Wardrobe	hanging/drawers/shelves
Bathroom	en suite Headroom : 1,88 m
Toilet	en suite
Toilet system	vacuum Allpa - Electric (new in 2020)
Wash basin	in the bathroom
Shower	en suite Headroom : 1,88 m
Extra info	Dark blue upholstery in the salon (new in 2007)



GRAND BANKS 42 CLASSIC

Extra info

Ceiling renewed in saloon and aft cabin (2007)

MACHINERY

No of engines	2
Make	Ford Lehman
Type	2712E
HP	120
kW	88.20
Fuel	diesel
Year installed	1979
Maximum speed (kn)	10
Cruising speed (kn)	8
Consumption (l/hr)	16
Engine hours	4057 & 5857
Engine cooling system	freshwater heat exchanger 2 x (1 x renewed in 2021)
Drive	shaft
Engine controls	bowden cable 2 x
Gearbox	hydraulic 1 x (Starboard side : new in 2002) & 1 x Borg-Warner (original)
Exhaust	watercooled
Propeller type	fixed 2 x
Propeller blades	3
Propeller shaft material	stainless steel 2 x
Shaft lubrication	water 2 x
Manual bilge pump	yes
Electric bilge pump	yes
Electrical installation	12 & 220 Volt
Start battery	1 x 50 Ah Optima Red Top (new in 2000)
Service battery	3 x 180 Ah Semi-Traction (new in 2019)
Navigation Battery	1x 230 Ah (new in 2019)
Battery monitor	2 x Mastervolt



GRAND BANKS 42 CLASSIC

Battery charger	Mastervolt Ivo Smart Charger 12V/25A-2 (new in 2000)
Battery charger/inverter	Victron MultiPlus Compact 12V/1600W/70A (new in 2000)
Shorepower	with cable
Extra info	2 x Separ fuel filter with water seperator
Extra info	2 x Mastervolt 90A alternator
Extra info	Polarity switch for shore power

NAVIGATION

Compass	In steering house & 1x Saura HB-65G Hand-Bearing compass
Depth sounder/log	Raytheon ST60 Tridata
VHF	Shipmate RS 8300 with 2nd horn on Flybridge
Autopilot	Raytheon ST6000+ (2 x control) (function not guaranteed)
Radar	Raytheon - in steering house (Scanner-type M92542)
Plotter/GPS	Raymarine hibrid touch Axion 12' (new in 2018)
Electronis chart(s)	yes
AIS transceiver	yes
Radio receiver	Sailor S.P. Radio Type R109
Navigation lights	yes
Loudhailer	Answering P.A. AMP. Intercom (functioning unknown)

EQUIPMENT

Fixed windscreen	On Flybridge
Bimini	Blue (on the Flybridge)
Cockpit cushions	White (on the Flybridge)
Cockpit table	yes
Cockpit chairs	2 x
Bathing platform	Teak
Boarding ladder	stainless steel
Gangway	Aluminium - extendable
Deck shower	yes
Anchor	Danforth (galvanised)



GRAND BANKS 42 CLASSIC

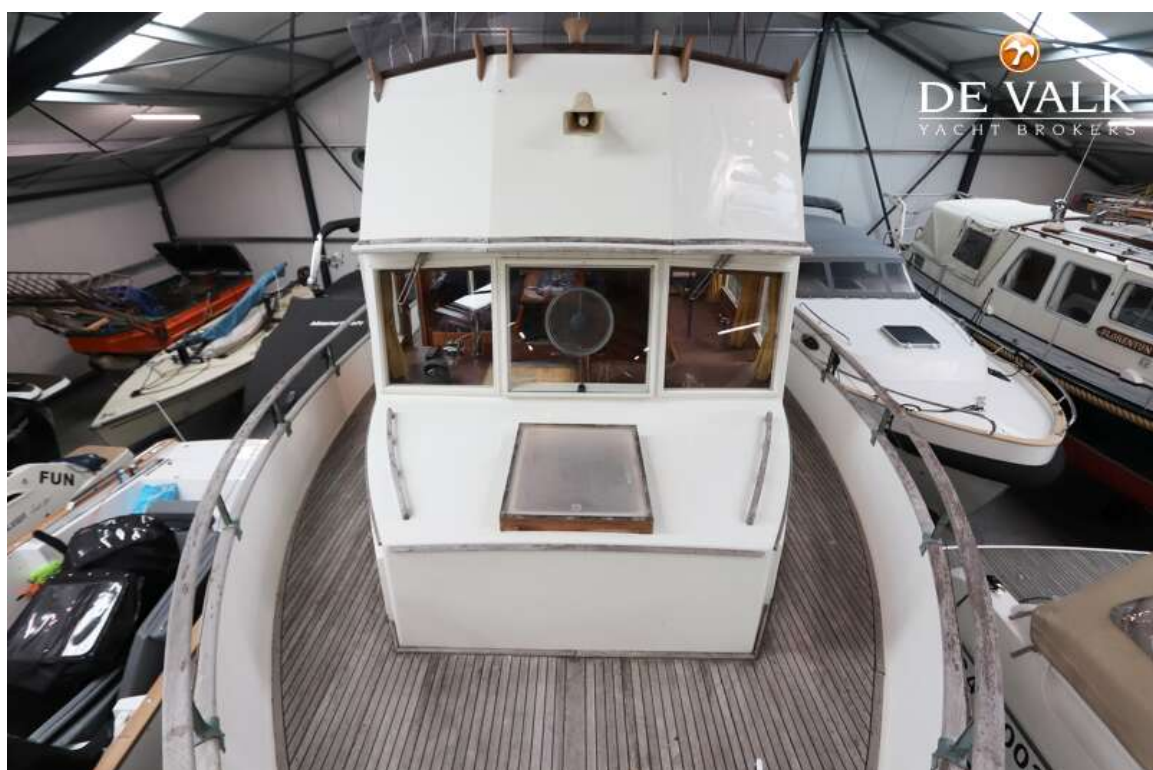
Anchor chain	Approx. 30 meter
Windlass	electrical Neco Marine NM 872 with remote on the bow (with blue cover)
Capstan	yes
Deck wash	yes
Outboard support	Teak (above the bathing platform)
Deck crane	manual Via the steadying boom
Sea railing	teak
Grab rail (superstructure)	teak
Railing side opening gates	2 x amidships
Pushpit	Stainless steel
Pulpit	yes
Life raft	container 1 x Plastimo Transocean (2020) on a bracket with a blue cover
Life raft (pers)	6
Lifebuoy	yes
Danbuoy	yes
Wiper	2 x
Clearview window	1 x Speich Clear-View Screen
Horn	electric
Radar reflector	yes
Fenders	yes
Mooring lines	yes
Spare parts	Fuel-, oil- and waterfilters & impellers
Radio-cd player	Grundig radio/cd-player (function not guaranteed)
Cockpit speakers	2 x on the flybridge (function not guaranteed)
Speakers in salon	2 x Blaupunkt 25W (function not guaranteed)
Clock - barometer	In the aft cabin
Fire extinguisher	yes
Latest extinguisher survey	Need to be surveyed/renewed
Extinguisher in engine room	Need to be surveyed/renewed
Extra info	yes



GRAND BANKS 42 CLASSIC



GRAND BANKS 42 CLASSIC



GRAND BANKS 42 CLASSIC



GRAND BANKS 42 CLASSIC



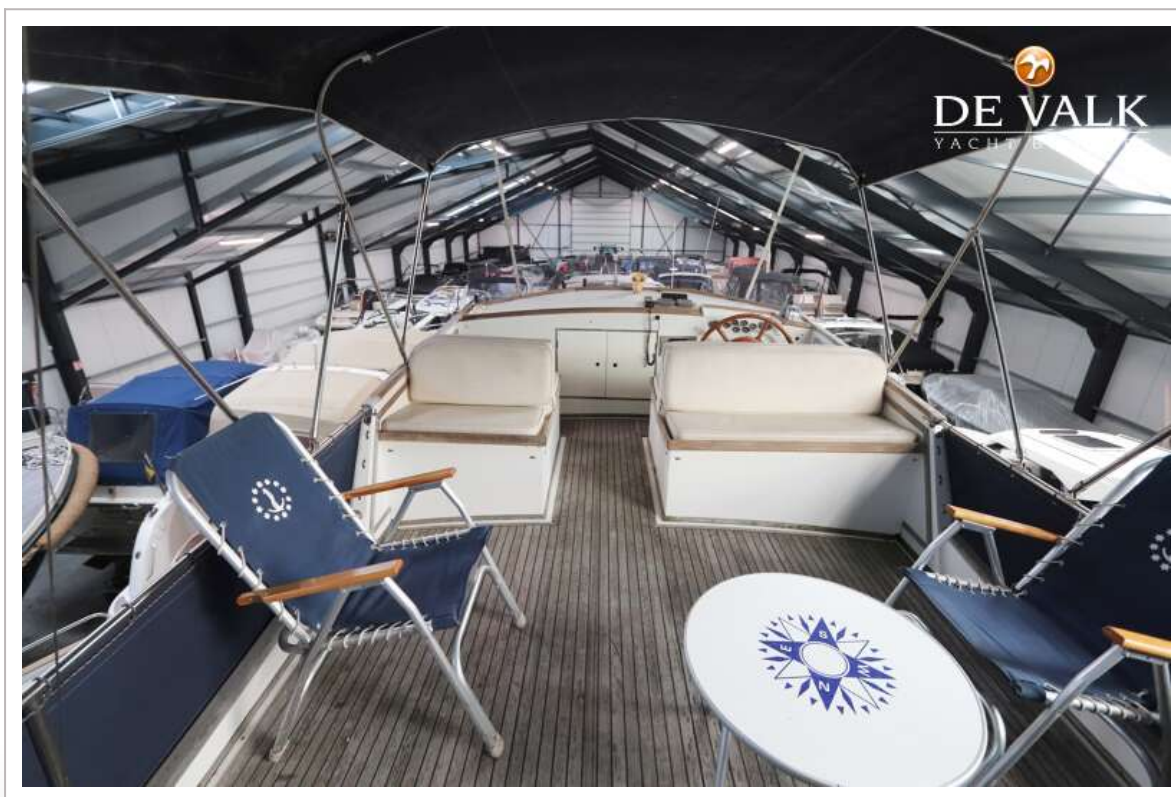
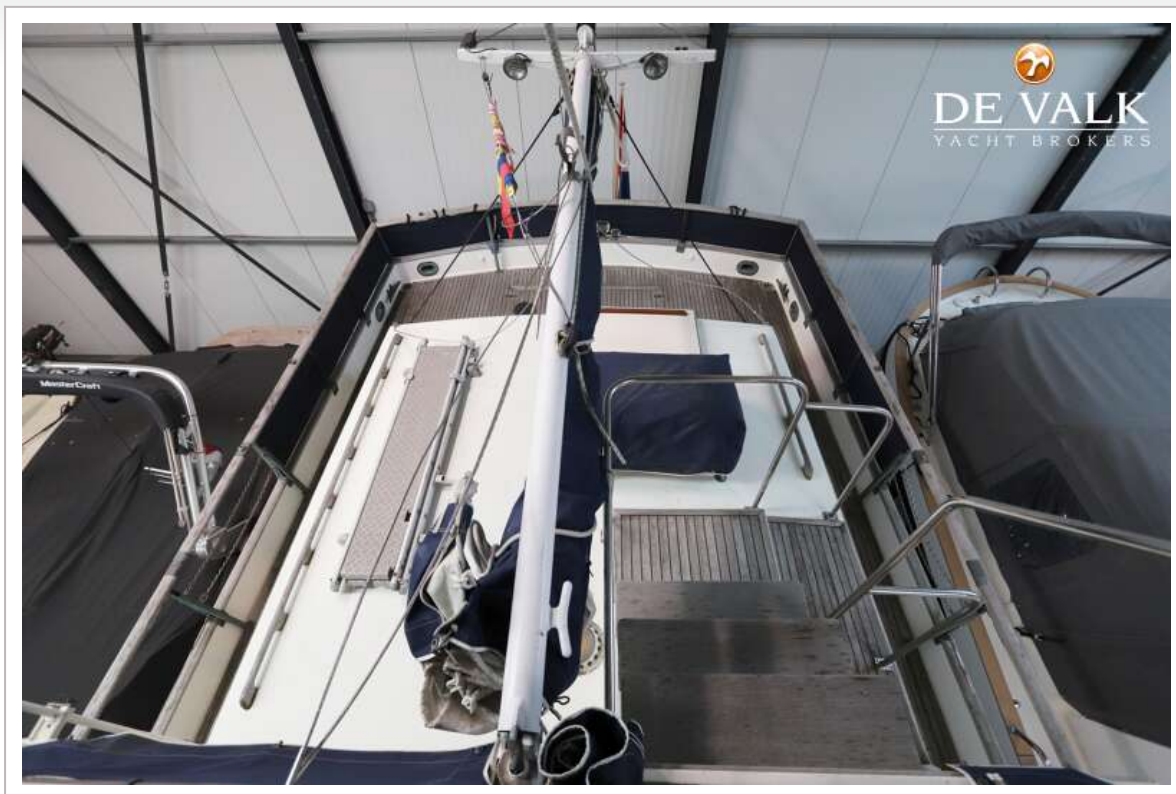
GRAND BANKS 42 CLASSIC



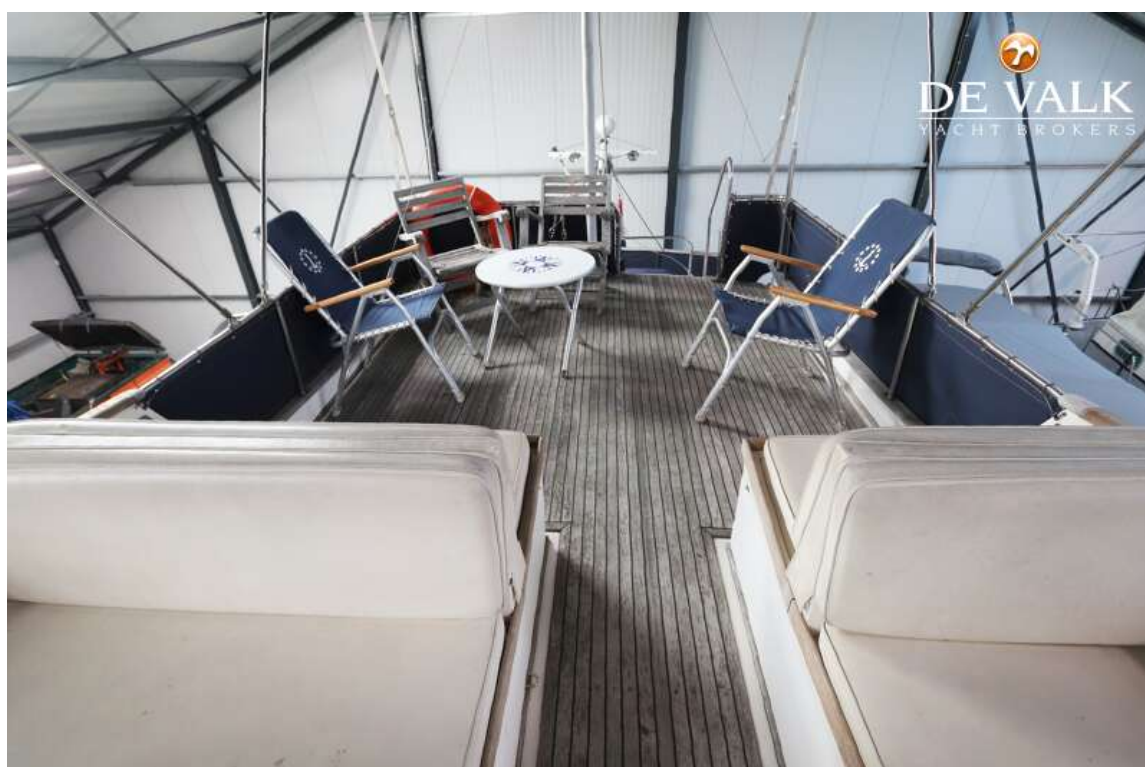
GRAND BANKS 42 CLASSIC



GRAND BANKS 42 CLASSIC



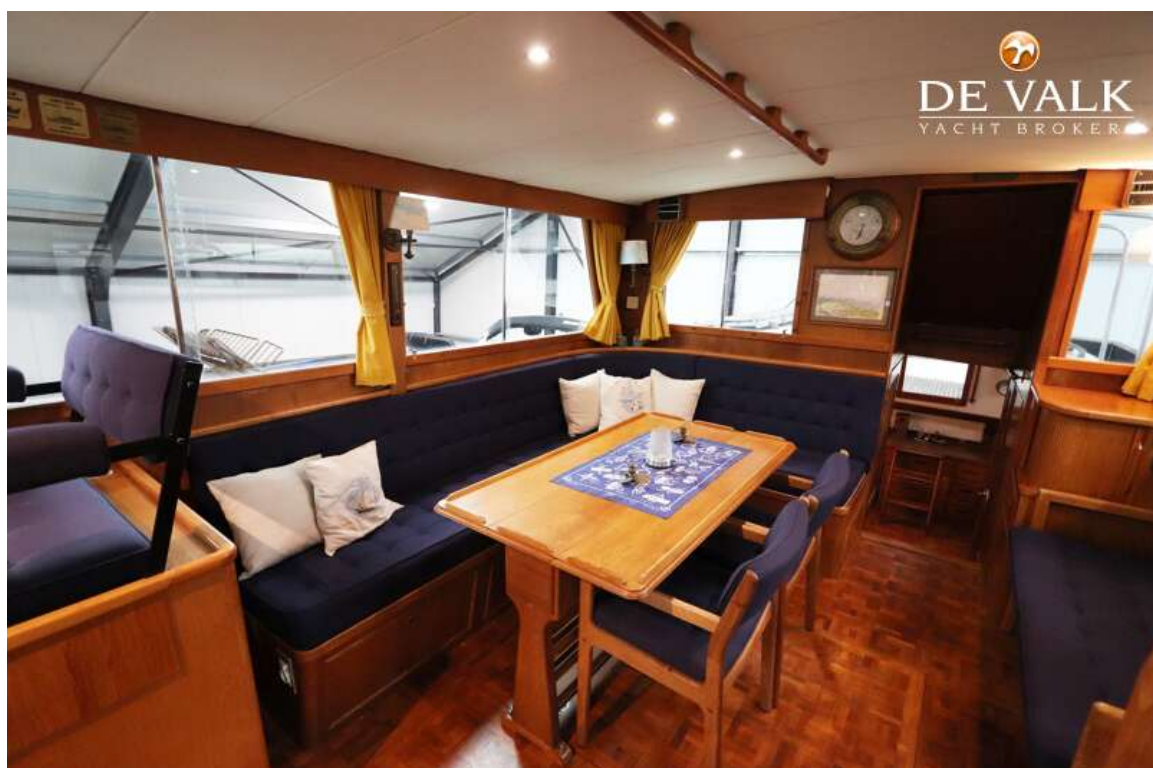
GRAND BANKS 42 CLASSIC



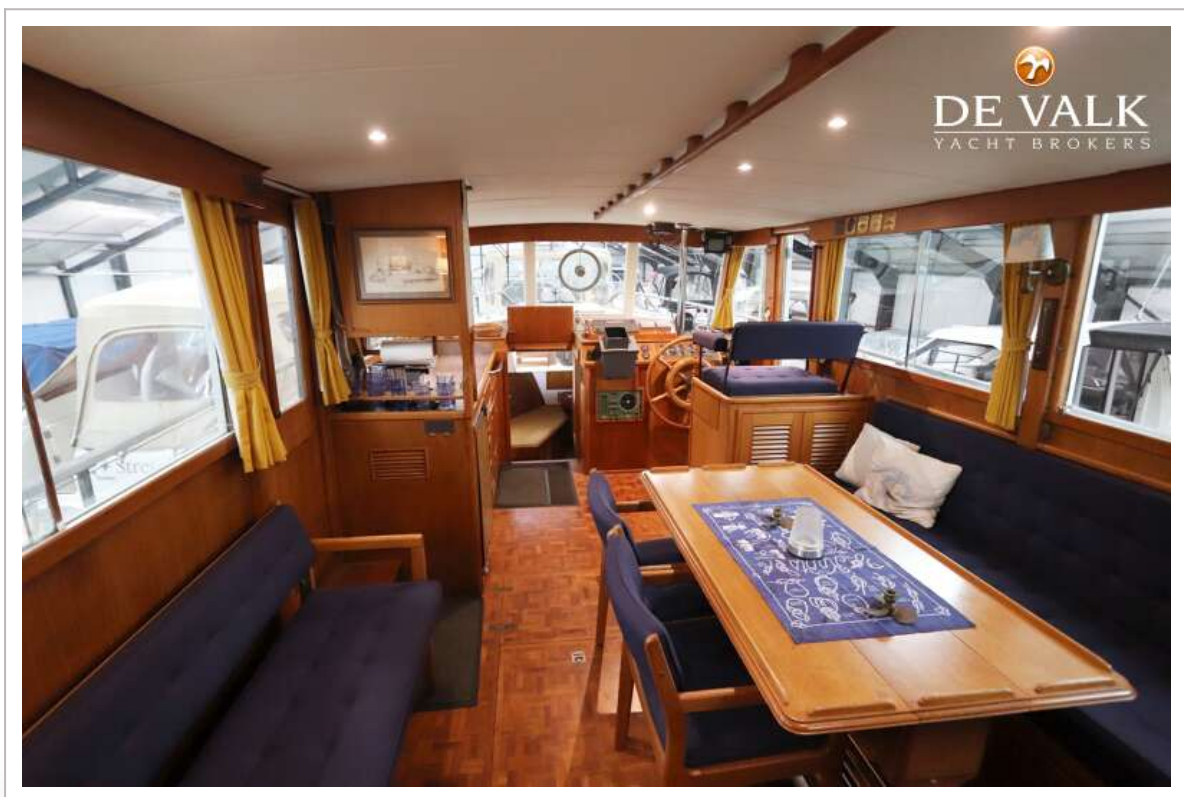
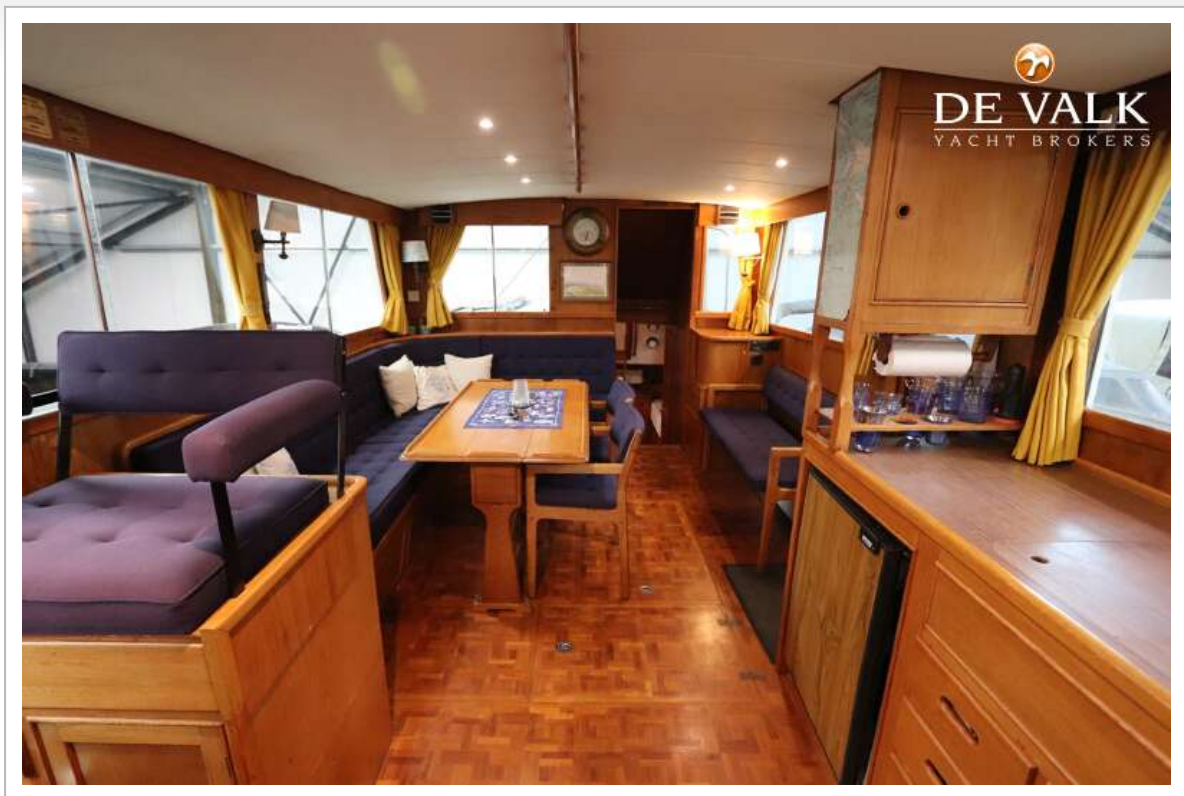
GRAND BANKS 42 CLASSIC



GRAND BANKS 42 CLASSIC



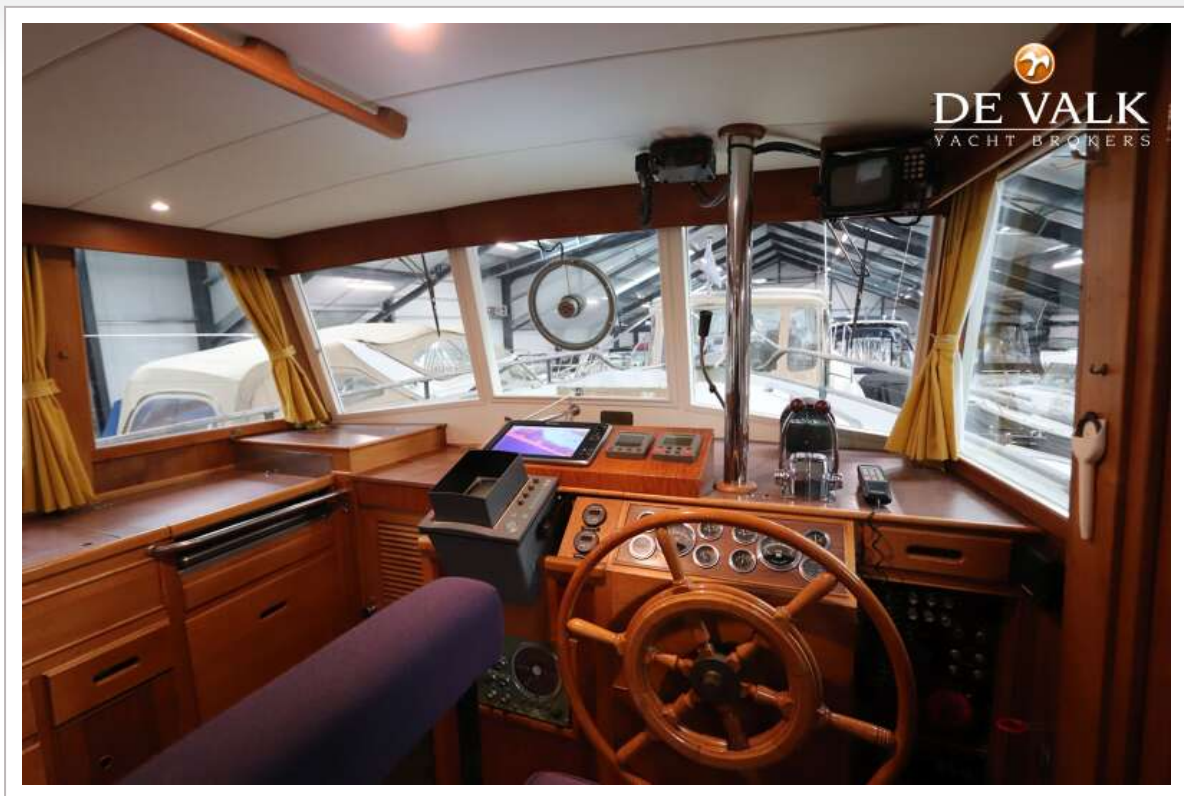
GRAND BANKS 42 CLASSIC



GRAND BANKS 42 CLASSIC



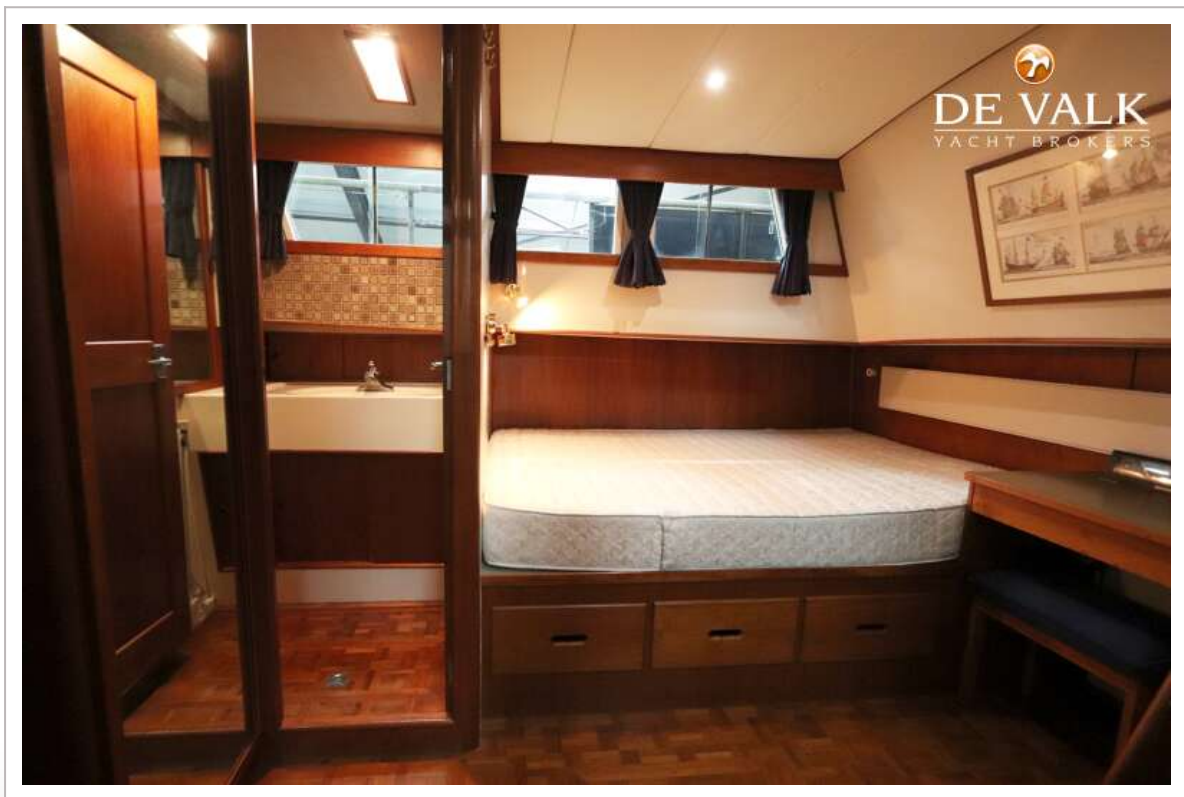
GRAND BANKS 42 CLASSIC



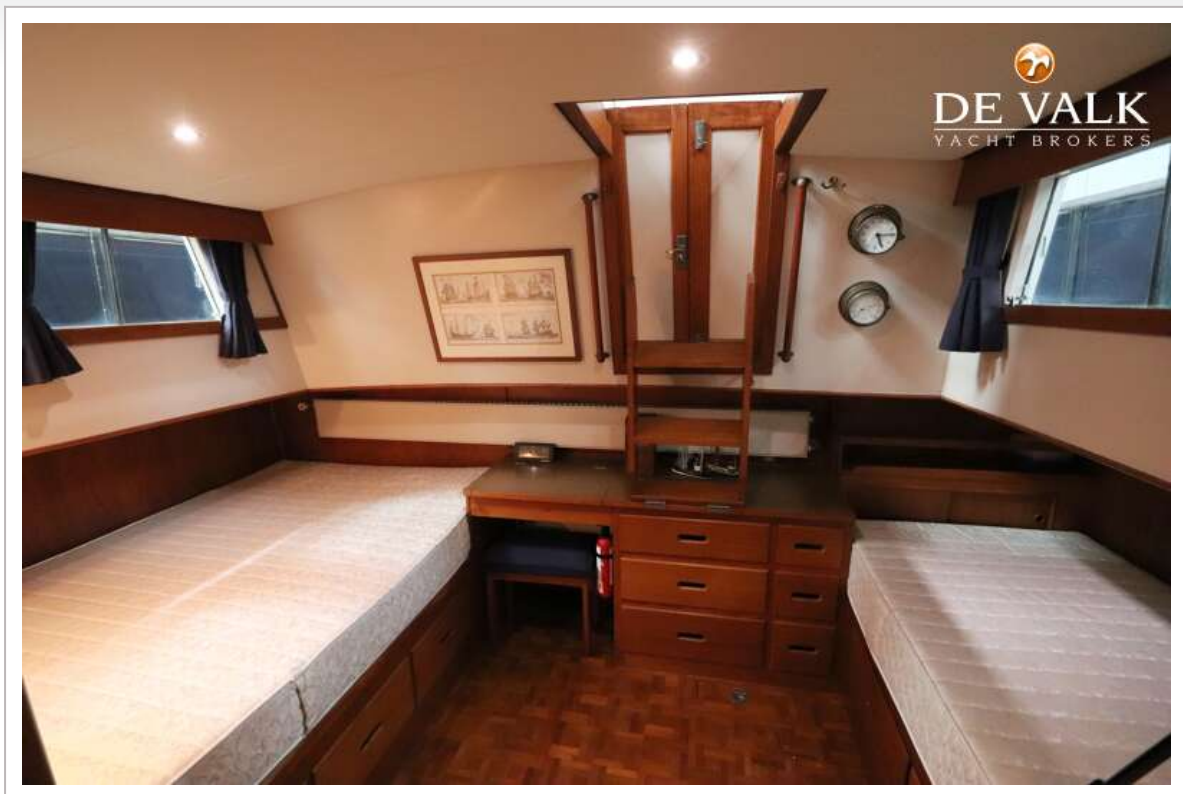
GRAND BANKS 42 CLASSIC



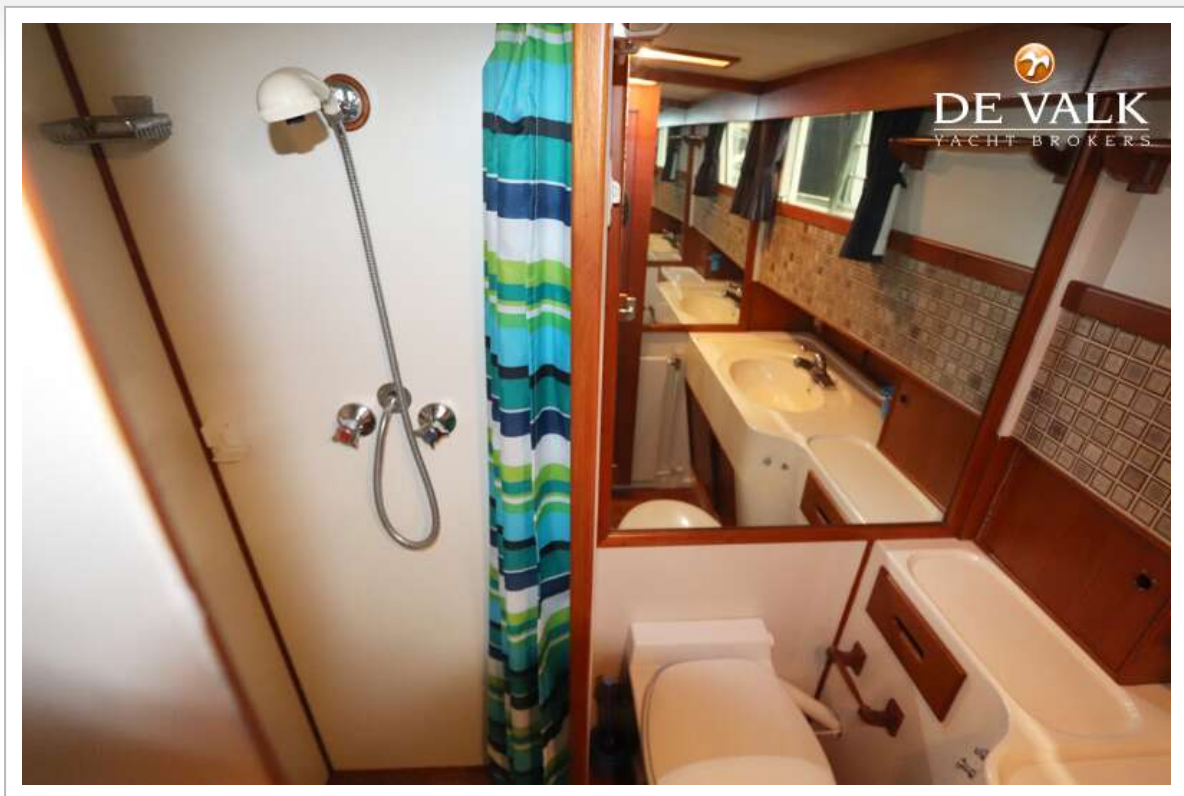
GRAND BANKS 42 CLASSIC



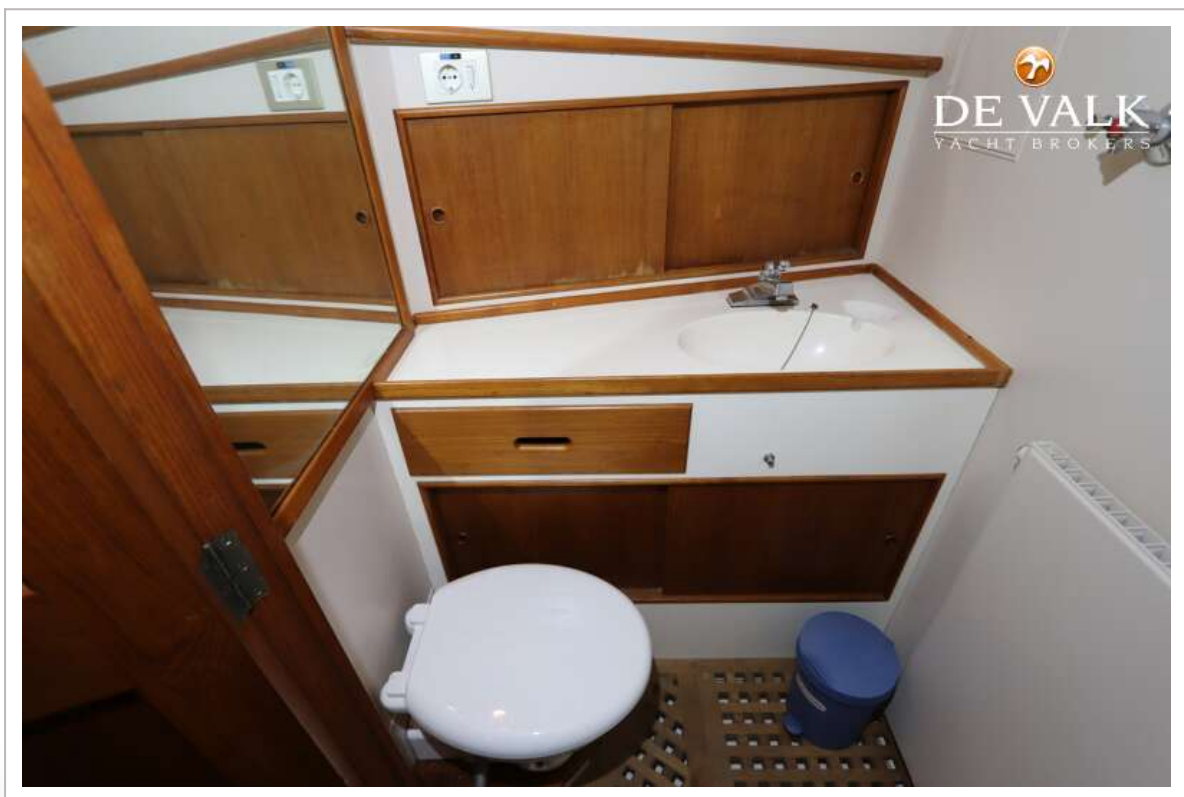
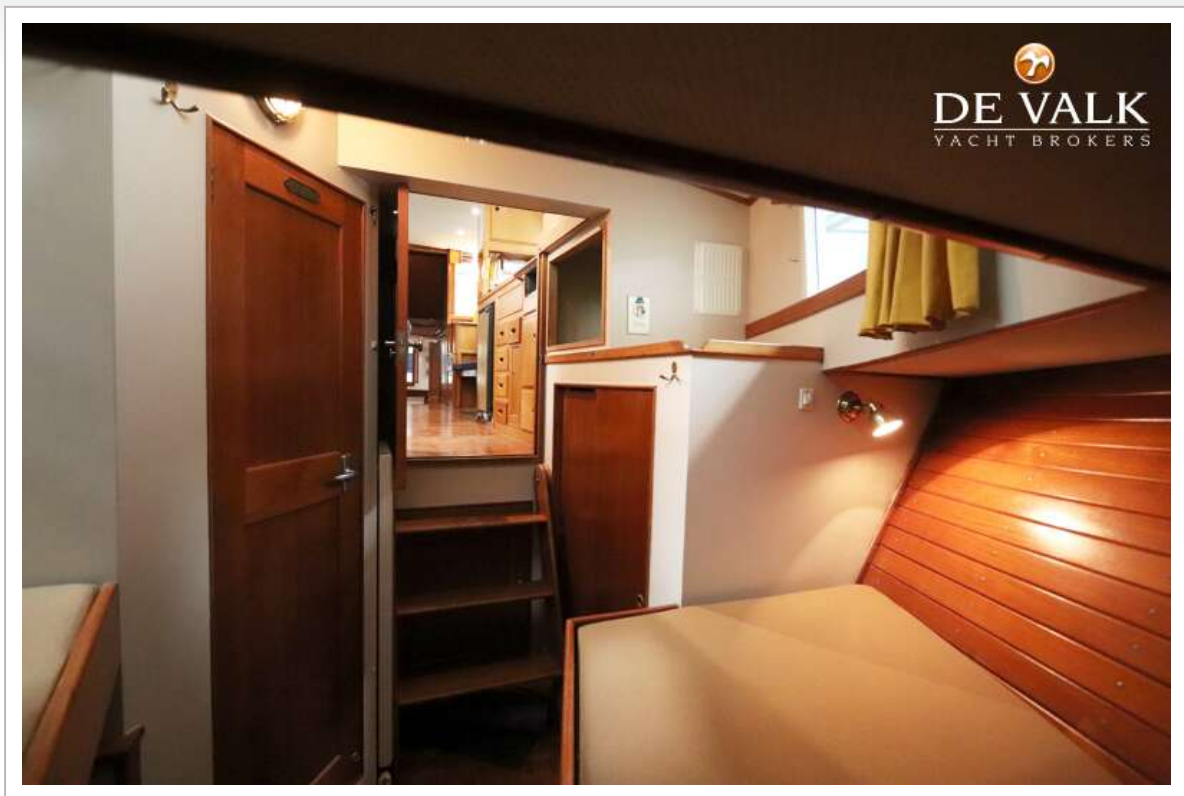
GRAND BANKS 42 CLASSIC



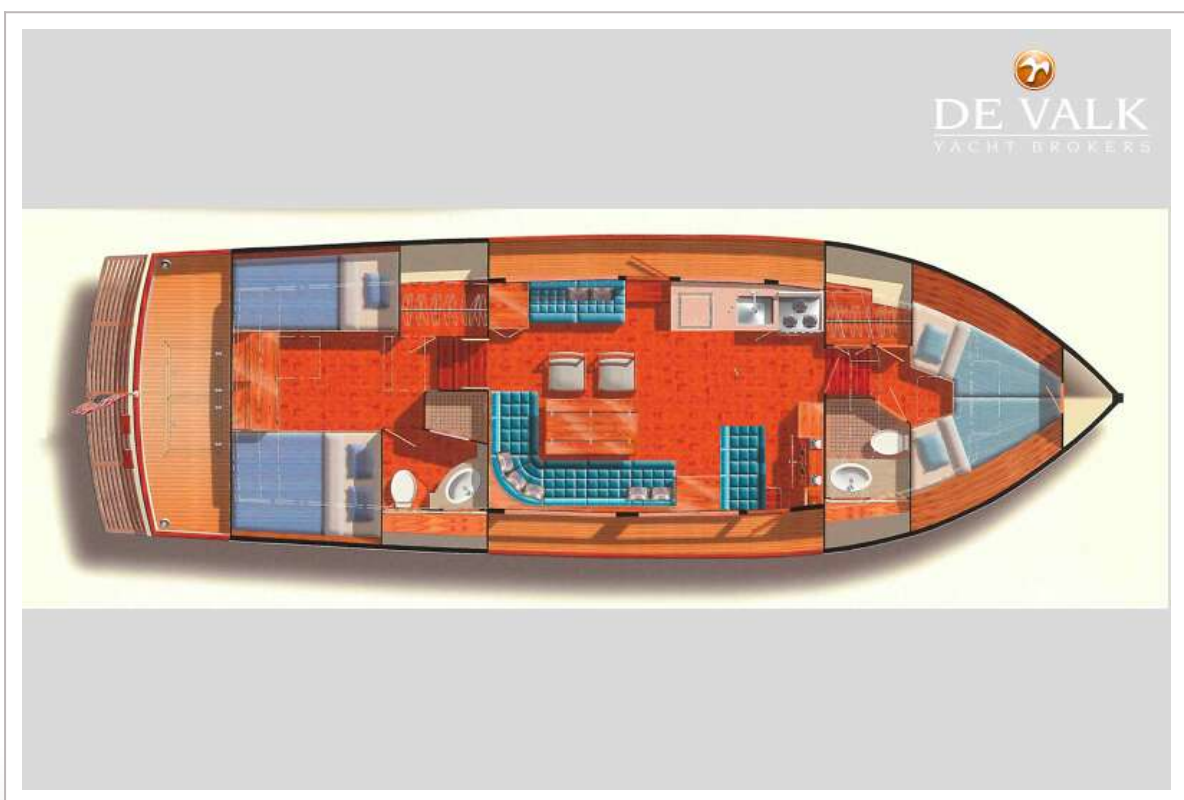
GRAND BANKS 42 CLASSIC



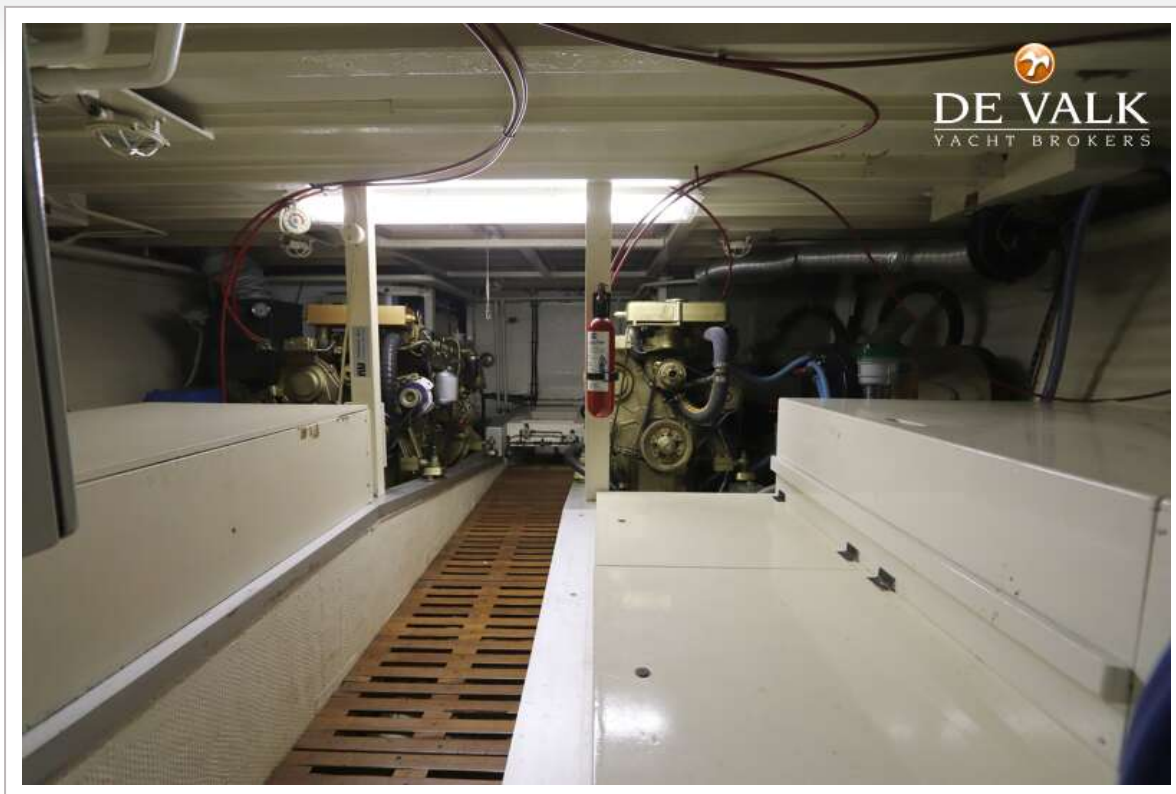
GRAND BANKS 42 CLASSIC



GRAND BANKS 42 CLASSIC



GRAND BANKS 42 CLASSIC



GRAND BANKS 42 CLASSIC



GRAND BANKS 42 CLASSIC

