



DE VALK  
YACHT BROKERS



## MULDER 74 FLYBRIDGE



DE VALK  
YACHT BROKERS

# MULDER 74 FLYBRIDGE

## BROKER'S COMMENTS

Sleek & powerful, "Boadicea" embodies a combination of 'futuristic' design and modern comfort. She's built to CE standard by Mulder Shipyard Holland, launched in June 2000. Twin Volvo Penta engines, hydraulic power steering and a bow thruster make her exceptionally manoeuvrable for her size, Koop Nautic stabilizers, air-conditioning and heating in all of the cabins.

*Sjoerd Paddenburg*

## SPECIFICATIONS

<b>Dimensions</b>	22.60 x 5.80 x 1.70 (m)	<b>Builder</b>	Jachtwerf Mulder b.v.
<b>Built</b>	2000	<b>Cabins</b>	4
<b>Material</b>	Steel	<b>Berths</b>	8
<b>Engine(s)</b>	2 x Volvo Penta TAMD 102 D diesel	<b>Hp/Kw</b>	2 x 380.00 (hp), 279.00 (kw)
<b>Asking price</b>	Under Offer (VAT Paid)	<b>Lying</b>	elsewhere / Not at sales office

## CONTACT

<b>Sales office</b>	De Valk Loosdrecht	<b>Telephone</b>	+31 35 582 90 30
<b>Address</b>	't Breukeleveense Meentje 6 1231 LM Loosdrecht / Wijdemeren The Netherlands	<b>E-mail</b>	loosdrecht@devalk.nl

## DISCLAIMER

These particulars are given in good faith as supplied but cannot be guaranteed.



# MULDER 74 FLYBRIDGE

## GENERAL

<b>Model</b>	MULDER 74 FLYBRIDGE
<b>Type</b>	motor yacht
<b>LOA (m)</b>	22,60
<b>Beam (m)</b>	5,80
<b>Draft (m)</b>	1,70
<b>Air draft (m)</b>	6,60
<b>Headroom (m)</b>	2,00
<b>Year built</b>	2000
<b>Launched</b>	2000 (start of building 1999)
<b>Builder</b>	Jachtwerf Mulder b.v.
<b>Country</b>	The Netherlands
<b>Designer</b>	D. Mulder
<b>Displacement (t)</b>	70
<b>CE norm</b>	B
<b>Hull material</b>	steel
<b>Hull colour</b>	white
<b>Hull thickness (mm)</b>	6 mm (isolated with PU-foam)
<b>Hull shape</b>	round-bilged
<b>Superstructure material</b>	aluminium + fly bridge
<b>Superstructure (mm)</b>	5
<b>Rubbing strake</b>	stainless steel
<b>Deck finish</b>	teak
<b>Superstructure deck finish</b>	teak
<b>Cockpit deck finish</b>	teak
<b>Antifouling (year)</b>	2021
<b>Window frame</b>	aluminium
<b>Window material</b>	double glazing
<b>Flybridge</b>	with steering position and lounge corner
<b>Radar arch</b>	collapsible Hydraulic
<b>Fuel tank (litre)</b>	8000



# MULDER 74 FLYBRIDGE

Freshwater tank (litre)	stainless steel 2,500
Blackwater tank (litre)	400
Greywater tank (litre)	400
Inside helm position	powersteer
Flybridge helm position	powersteer
More info on hull	yes
More info on paintwork	Two component paint system.
Extra info	Tinted windows (except wheelhouse for better night view).
Extra info	Invoices from refit available on request.

## ACCOMMODATION

Cabins	4
Berths	8
Interior	mahogany
Saloon	yes
Heating	Kabola B35TAP
Air-conditioning	yes
Galley	yes
Sink	yes
Cooker	ceramic Bosch
Extractor	yes
Microwave	Bosch microwave/oven
Fridge	Miele
Freezer	Miele
Hot water system	on central heating
Water pressure system	Hydrofor + pressure tank
Dishwasher	Bosch
Owners cabin	French bed
Wardrobe	hanging/drawers/shelves
Bathroom	en suite Mable floor
Toilet	yes



# MULDER 74 FLYBRIDGE

Toilet system	electric
Wash basin	2x
Shower	+ towel radiator
Bath tub	yes
Guest cabin 1	French bed
Bathroom	en suite Mable floor
Toilet	yes
Toilet system	electric
Wash basin	+ towel radiator
Shower	yes
Guest cabin 2	twin single
Wardrobe	hanging
Bathroom	shared Mable floor
Toilet	yes
Toilet system	electric
Wash basin	yes
Shower	+ towel radiator
Guest cabin 3	twin single
Wardrobe	hanging
Toilet	Day toilet
Toilet system	electric
Wash basin	yes
Washing machine	Bosch
Dryer	Bosch



# MULDER 74 FLYBRIDGE

## Extra info

Steering position with two side doors. Recaro leather steering chairs, all necessary navigation mentioned in the navigation block, on starboard side a staircase that leads to the forward guest cabins. Opposite the U-shaped pantry beautiful carved dining table with 6 comfortable dining chairs. Large saloon with two leather benches and saloon table, lowered seating, indirect and direct lightning system with dimmers. U-line ice cub maker. Sliding doors to the aft deck and stairs the owner's cabin, day toilet and engine room entrance. Aft deck: large dining table, three comfortable chairs and settee. Panasonic camera system on aft deck and in engine room. Air Conditioning in each of the cabins.

## Extra info

6 comfortable dining chairs from the renowned Georgetti brand

## MACHINERY

No of engines	2
Make	Volvo Penta
Type	TAMD 102 D
HP	380
kW	279
Fuel	diesel
Year installed	2000
Maximum speed (kn)	12,00
Range (nm)	2250
Engine hours	1410
Engine cooling system	freshwater heat exchanger
Drive	shaft
Engine controls	electrical Mannesman Rearoth
Gearbox	Twin Disc MG5091 SC (2,04:1)
Bowthruster	hydraulic Attema - 35 hp
Propeller blades	2x 4 - bronze
Propeller shaft material	stainless steel
Shaft lubrication	yes
Electrical installation	24V/220V



# MULDER 74 FLYBRIDGE

<b>Generator</b>	Westerbeke 20 kW in sound shield
<b>Generator 2</b>	Mastervolt Whisper 12 kW in sound shield
<b>Batteries</b>	2x
<b>Start battery</b>	2x 170 Ah
<b>Service battery</b>	12x 880 Ah traction
<b>Generator battery</b>	2x
<b>Battery monitor</b>	yes
<b>Battery charger</b>	Mastervolt Mass 24/100
<b>Inverter</b>	Mastervolt Dakar Sinus - 3000 kW
<b>Shorepower</b>	yes
<b>Insulation transformer</b>	8 kW
<b>Extra info</b>	Isolated engine room with plenty headroom. Water alert on fuel filter system main engines. Koopnautic hydraulic stabilizers. Both generators with water separators and starting panels on the inner steering position. Bilge system with crash pump.

## NAVIGATION

<b>Compass</b>	Simrad IS15
<b>Compass on flybridge</b>	Simrad IS15
<b>Depth sounder</b>	Simrad IS15 (fly bridge)
<b>Log</b>	Simrad IS15 (fly bridge)
<b>Windset</b>	Simrad IS15
<b>VHF</b>	1x RS 8300 BV + 1x RS 8400 DSC, DSC controller, 3x Celmar 2-1 VHF antennas.
<b>Autopilot</b>	Robertson AP20 wheel house /fly bridge Robertson FN35 joystick fly bridge
<b>Rudder angle indicator</b>	R13 - wheelhouse / fly bridge
<b>Radar</b>	Simrad CR50D 14' color screen + radar antenna 4kW
<b>GPS</b>	Simrad
<b>Plotter</b>	Simrad chartplotter CE50 14' color screen
<b>Searchlight</b>	yes
<b>Extra info</b>	Simrad multi: depth / log - wheelhouse / fly bridge.



## EQUIPMENT

Cockpit cushions	yes
Cockpit table	yes
Cockpit chairs	yes
Bathing platform	+ teak
Boarding ladder	yes
Gangway	+ RMI
Deck shower	yes
Anchor	yes
Anchor chain	50 m
Windlass	electrical
Deck wash	yes
Deck crane	Hydraulic/electric (400 kg)
Wiper	3x - Exalto with double arms
Horn	electric
Fenders	yes
Mooring lines	yes
TV	Samsung
Satellite	Orbiscan MAR X55 satellite receiver for television
Surround Sound System	Bose





# MULDER 74 FLYBRIDGE



# MULDER 74 FLYBRIDGE



# MULDER 74 FLYBRIDGE



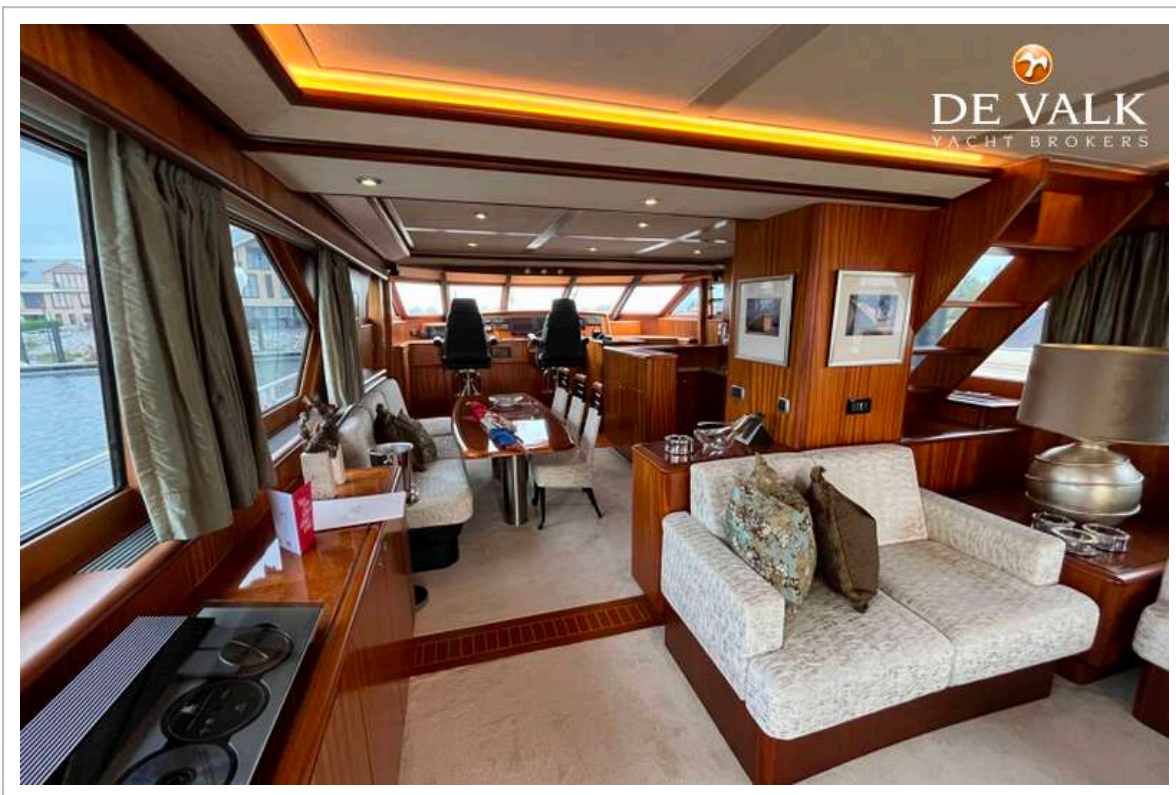
# MULDER 74 FLYBRIDGE



# MULDER 74 FLYBRIDGE



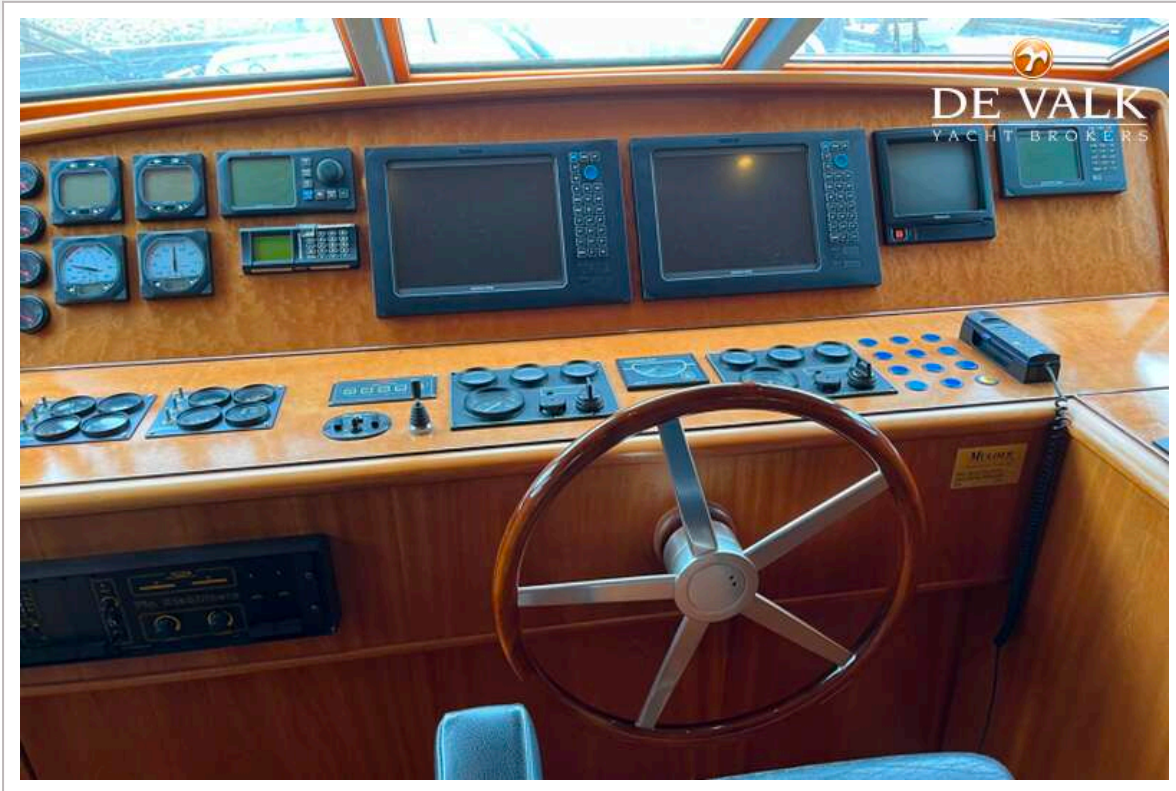
# MULDER 74 FLYBRIDGE



# MULDER 74 FLYBRIDGE

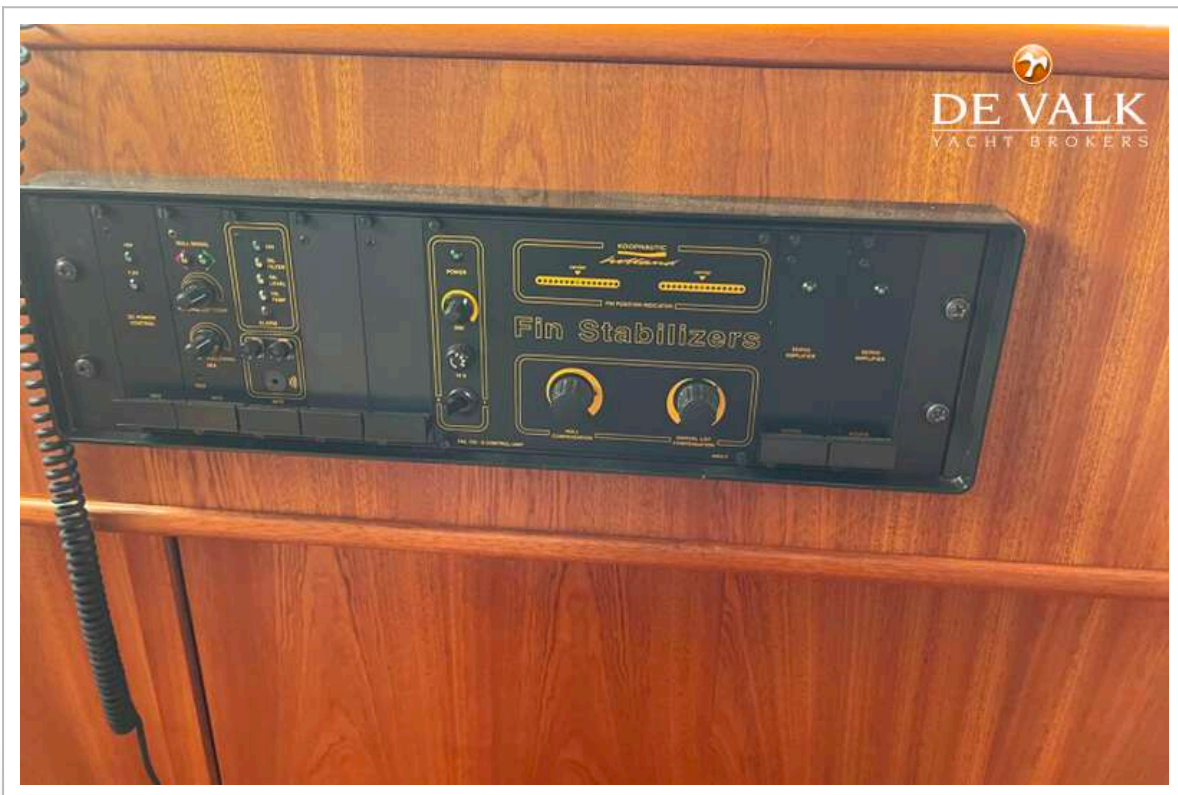


# MULDER 74 FLYBRIDGE

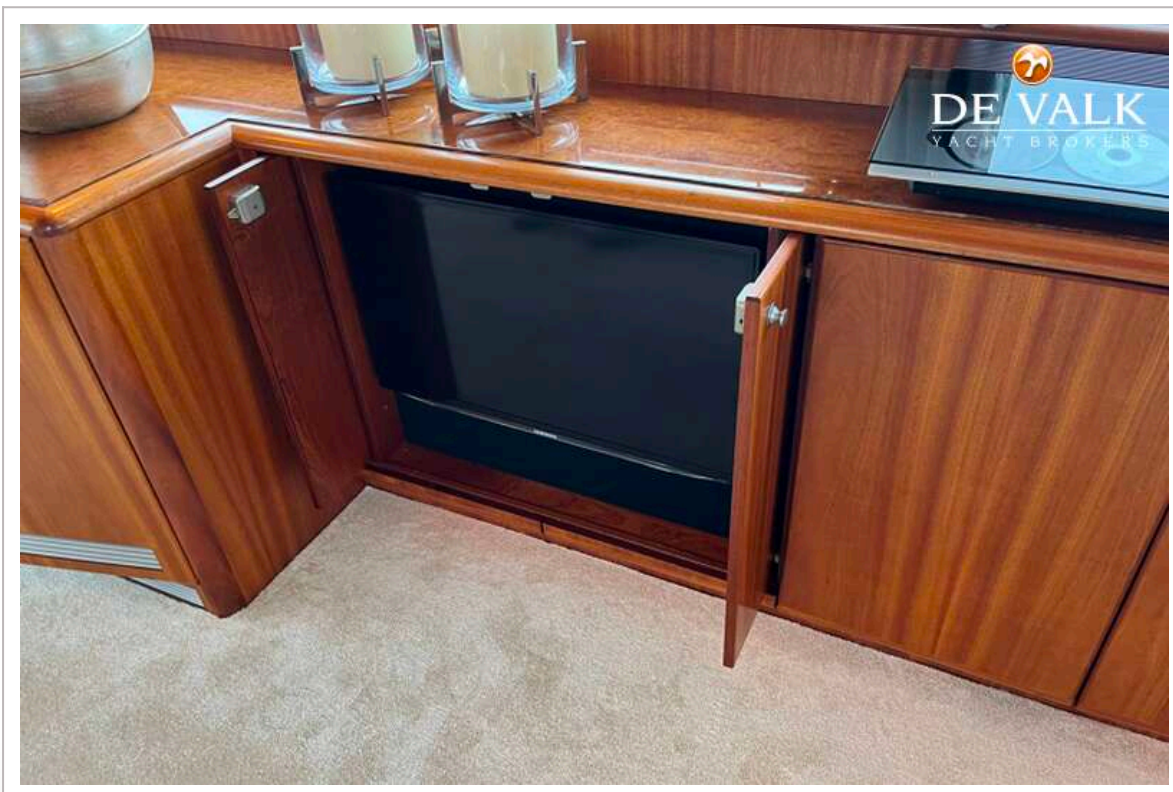




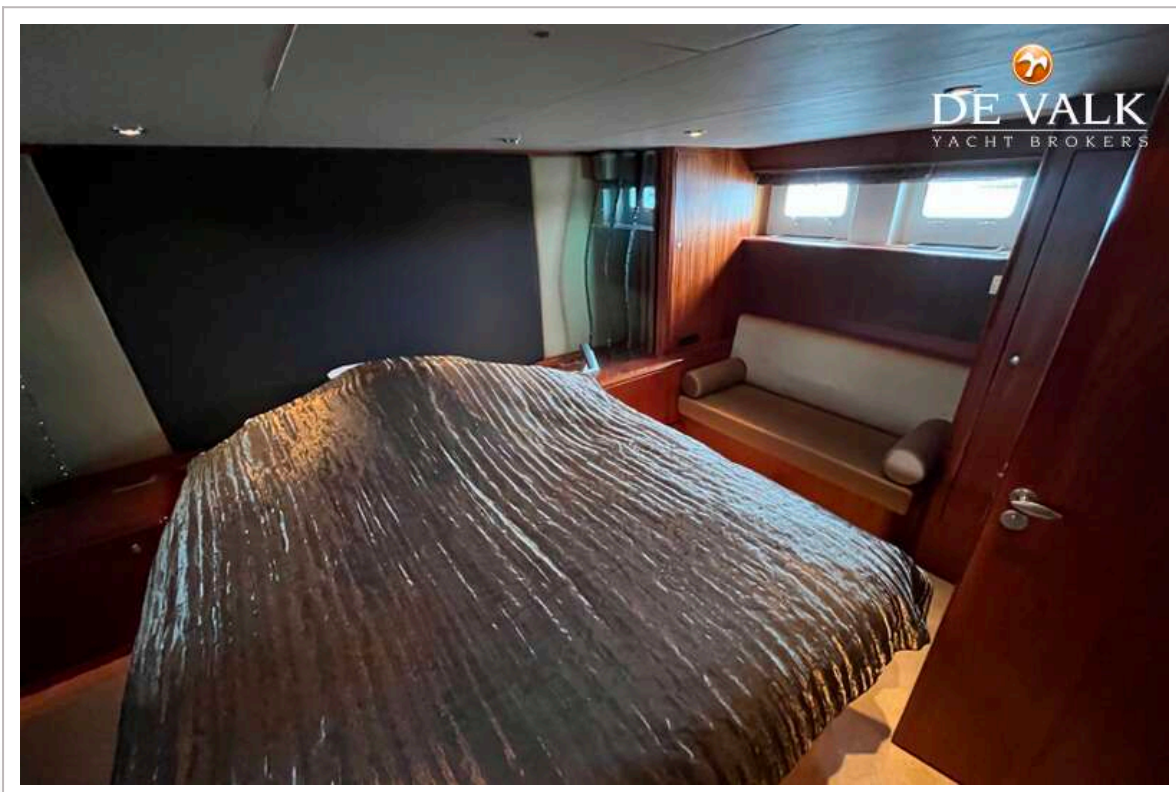
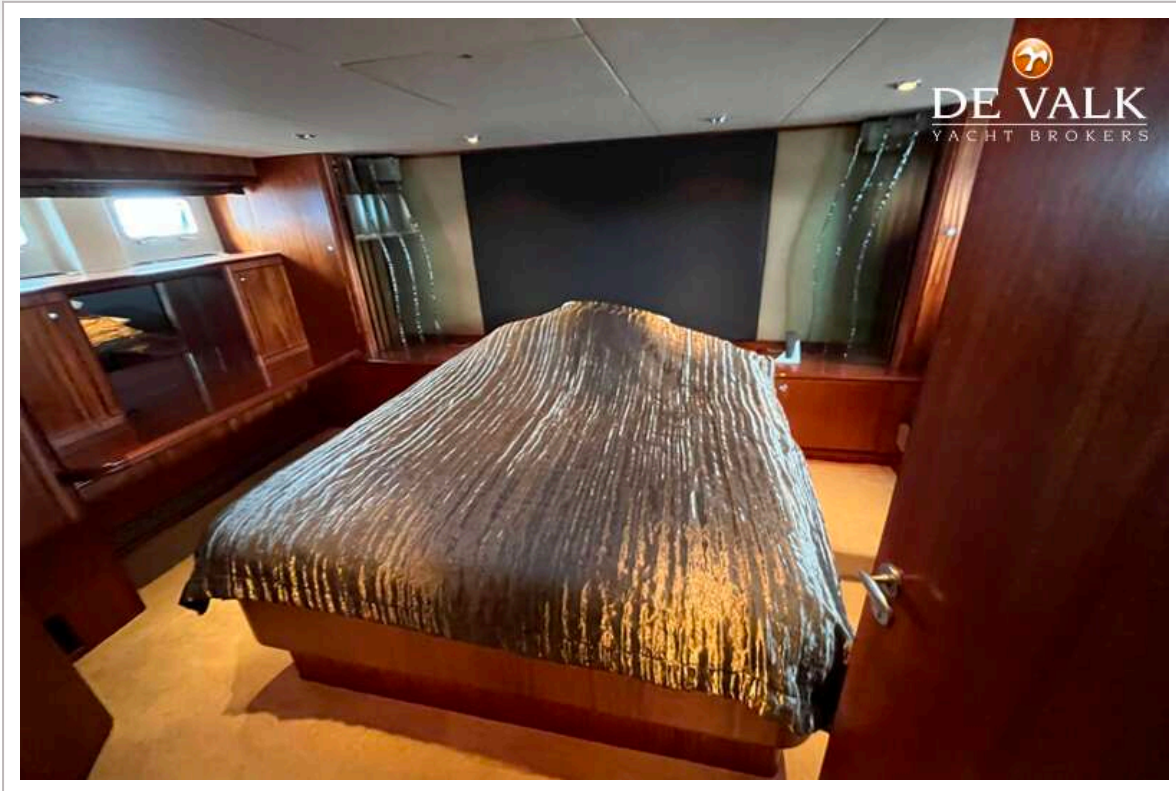
# MULDER 74 FLYBRIDGE



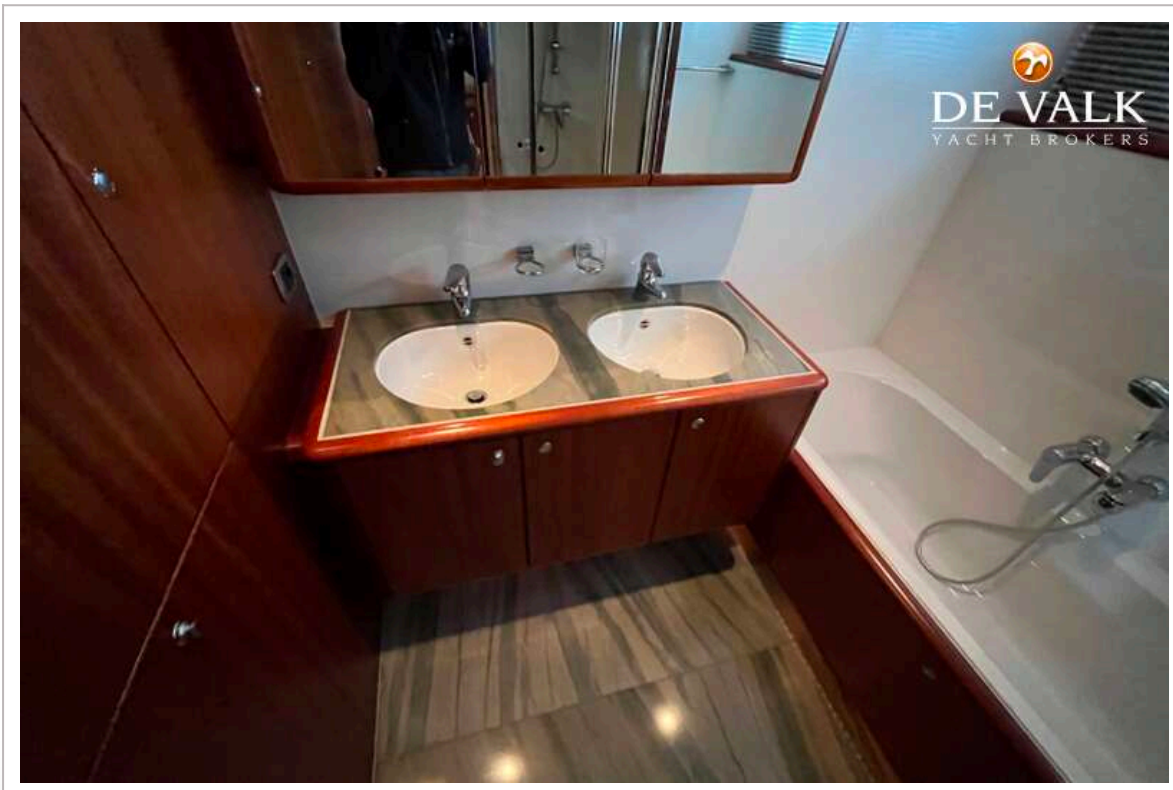
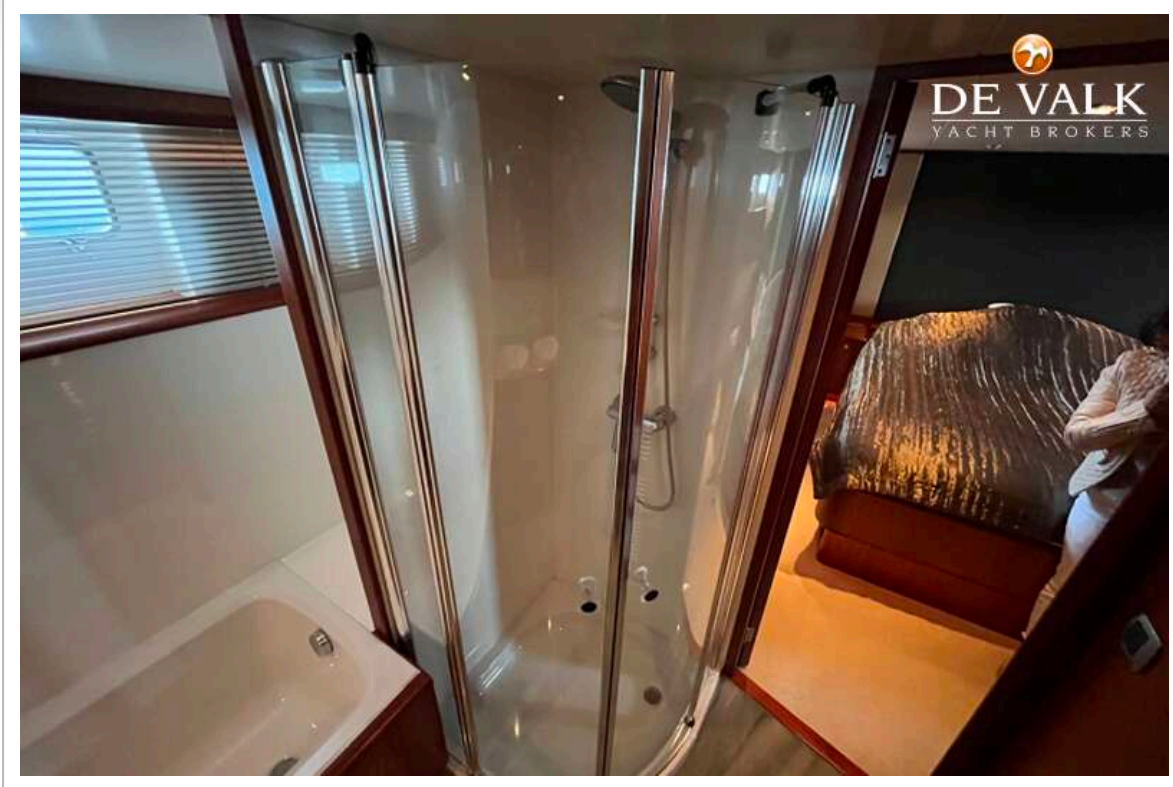
# MULDER 74 FLYBRIDGE



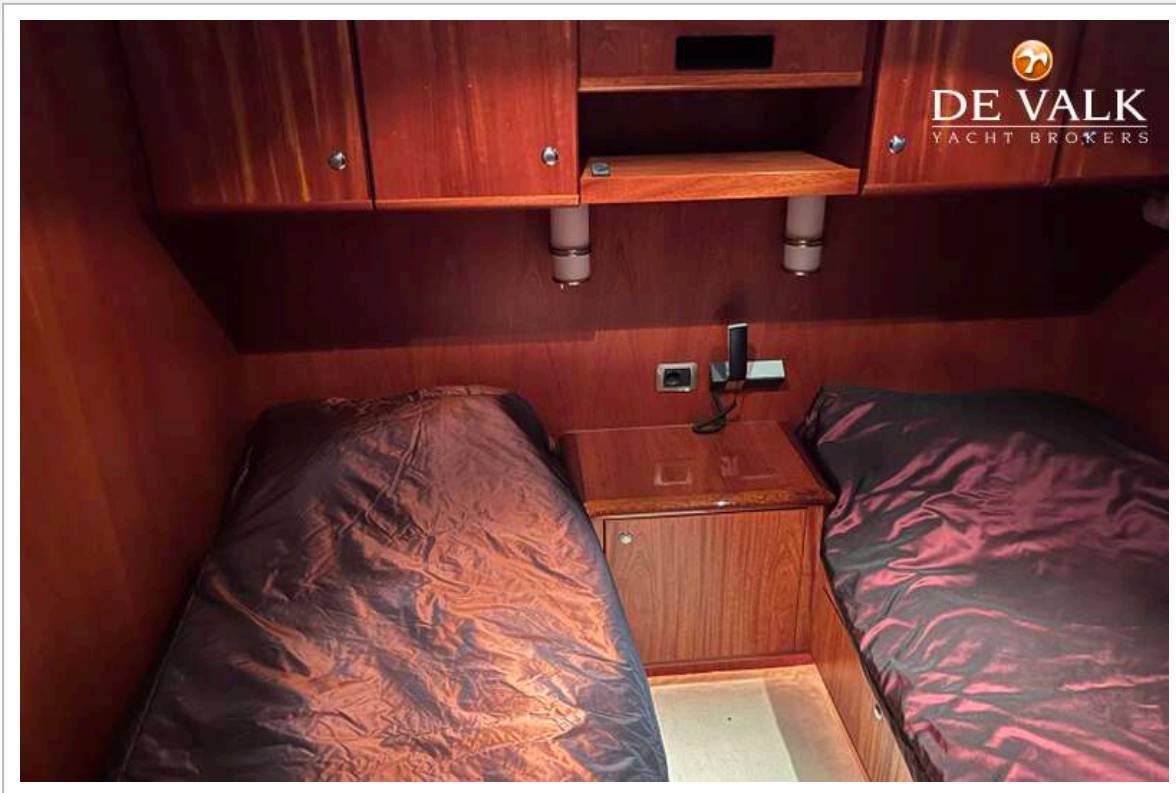
# MULDER 74 FLYBRIDGE



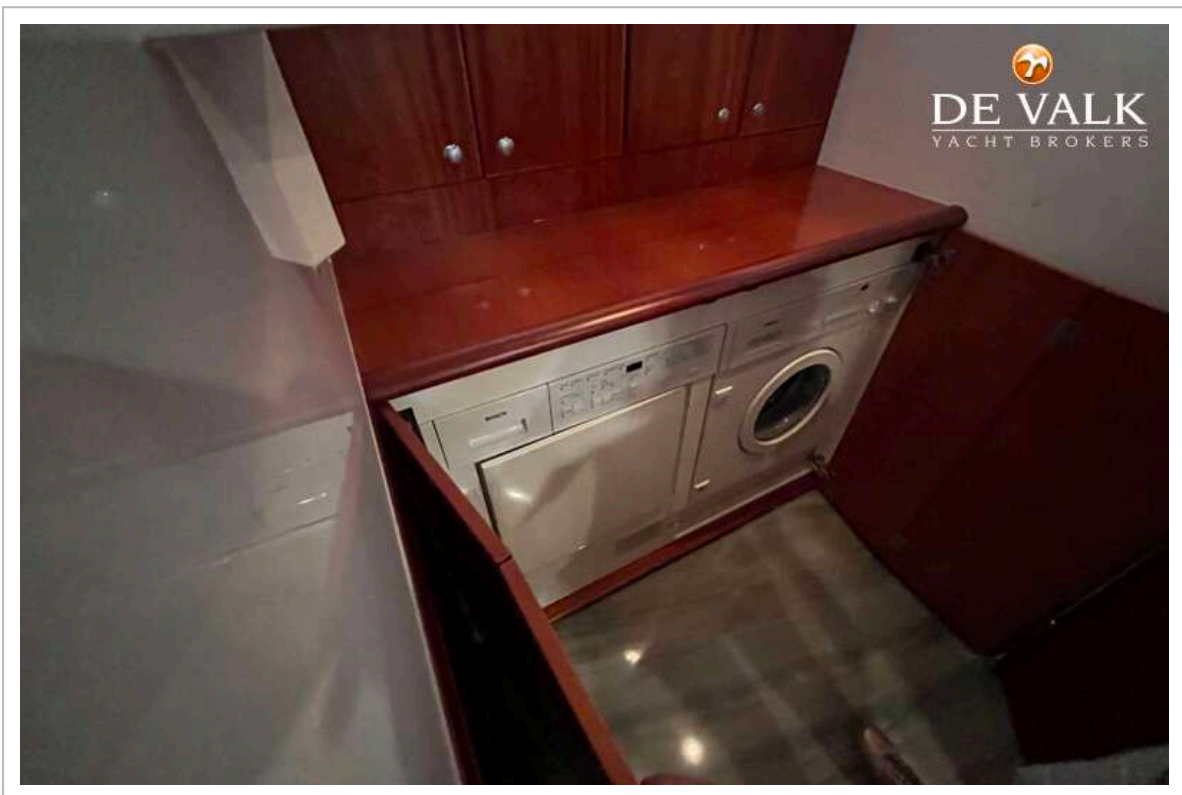
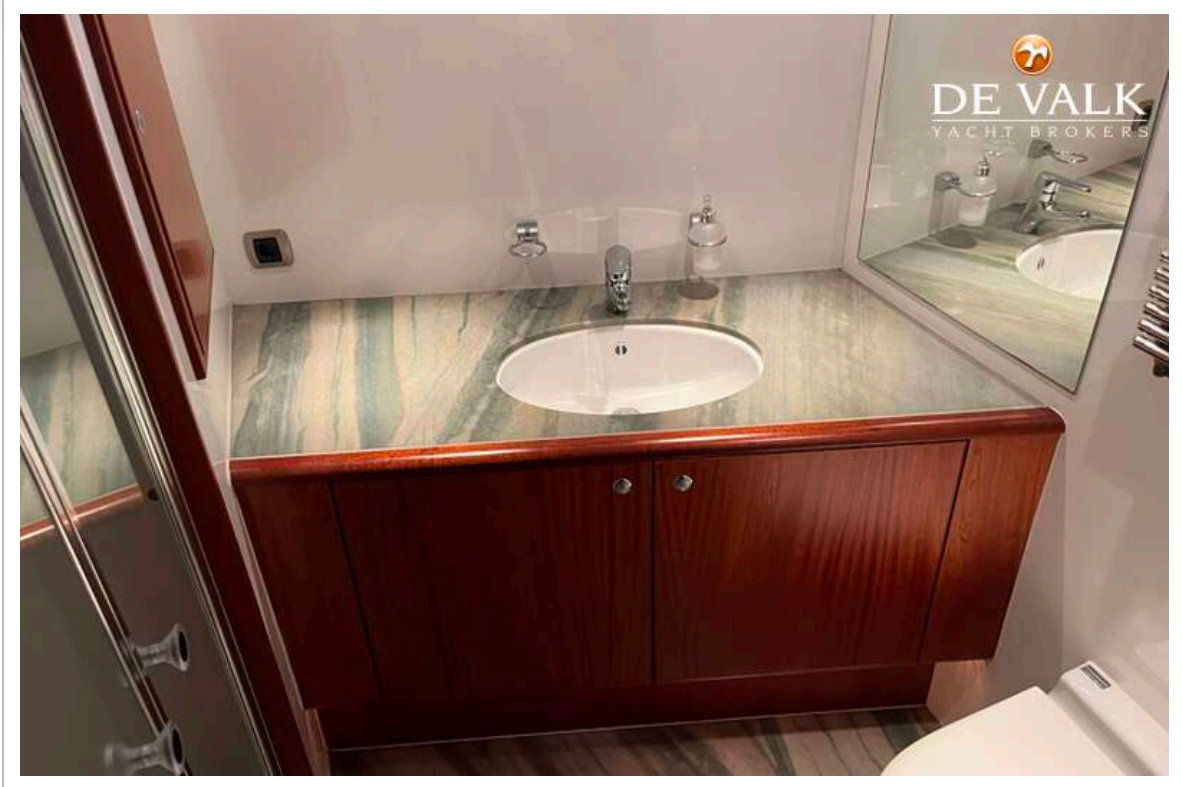
# MULDER 74 FLYBRIDGE



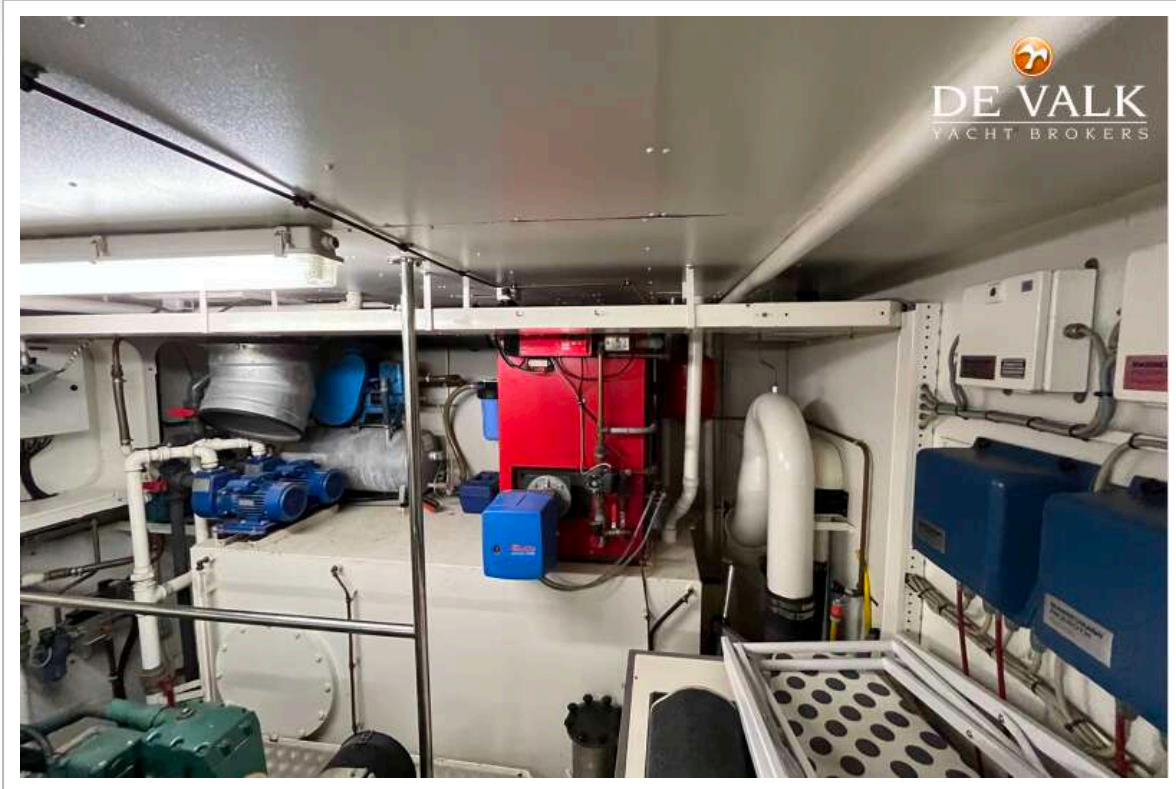
# MULDER 74 FLYBRIDGE



# MULDER 74 FLYBRIDGE



# MULDER 74 FLYBRIDGE



# MULDER 74 FLYBRIDGE

