



DE VALK
YACHT BROKERS



MARTEN 60



DE VALK
YACHT BROKERS

BROKER'S COMMENTS

PINTA SMERALDA is a beautiful, high quality cruiser-racer, built in carbon by Marten Marine in New Zealand. Judel Vrolijk designed this Grand Prix Performance yacht, easy sailed by 2 people and equipped with all comforts to be on board with a family, including spacious cabins & airco. When the current owners saw this beautifully lined yacht sailing, it was love at first sight. 11 years later their dream became reality, after which no expense or effort was spared and the yacht is truly as good as new. Viewing by appointment via De Valk Sint Annaland. PINTA is moored 30 minutes South of Rotterdam

Jan-Ward van Dantzig

SPECIFICATIONS

Dimensions	18.30 x 5.03 x 3,85 / 2.50 (m)	Builder	Marten Marine Industry - Auckland
Built	1996	Cabins	4
Material	Carbon Fibre	Berths	10
Engine(s)	1 x Yanmar 4LAH-HTP diesel	Hp/Kw	160.00 (hp), 117.76 (kw)
Asking price	€ 980.000 (VAT Paid)	Lying	elsewhere / not at sales office

CONTACT

Sales office	De Valk Sint Annaland	Telephone	+31 166 601 000
Address	Koelhuisweg 4 4697 RM Sint Annaland The Netherlands	E-mail	sintannaland@devalk.nl

DISCLAIMER

These particulars are given in good faith as supplied but cannot be guaranteed.



GENERAL

Model	MARTEN 60
Type	sailing yacht
LOA (m)	18,30
LWL (m)	16,50
Beam (m)	5,03
Draft (m)	2,50
Draft min (m)	3,85
Air draft (m)	31,00
Headroom (m)	2,00
Year built	1996
Launched	1997
Builder	Marten Marine Industry - Auckland
Country	New Zealand
Designer	Judel & Vrolijk
Displacement (t)	17,5
Ballast (tonnes)	lead & stainless steel - 7,0
Gross tonnage	18,3
Net tonnage	17,5
CE norm	NA
Hull material	carbon fibre
Hull colour	white Spray-painted by Alexseal in 2011
Hull thickness (mm)	9 mm outside & 4 mm inside
Hull shape	Fast Displacement Hull
Keel type	lifting keel Hydraulic. Keel with stainless steel fin and 5,400 kg lead bulb
Superstructure material	carbon fibre & epoxy with a foam core
Superstructure (mm)	8 mm
Deck plate thickness (mm)	15 mm outside & 40 mm inside
Deck material	carbon fibre Pre-preg carbon fibre kevlar with a nomex core deck



Deck finish	teak Vacuum sealed on a carbon underlayment plate & on deck in 2008
Superstructure deck finish	non-skid paint Painted in 2011
Cockpit deck finish	teak Vacuum sealed on a carbon underlayment plate & on deck in 2008
Antifouling (year)	2024
Dorades	yes
Window frame	aluminium
Window material	tempered glass
Deckhatch	New in 2013: Lewmar with screens & shades
Portholes	aluminium New in 2013 : Lewmar
Insulation	foam Sandwich build hull
Radar arch	non collapsible Scanstrut at the backstay
Fuel tank (litre)	stainless steel 1.000 (in 3x tank) cleaned in 2023 - all hoses renewed in 2023
Level indicator (fuel tank)	New sensors installed in 2023
Freshwater tank (litre)	stainless steel 600 (in 2 x tank) cleaned in 2024 - all hoses renewed in 2023
Level indicator (freshwater)	New sensors installed in 2023
Blackwater tank (litre)	stainless steel 150 - cleaned in 2023 - all hoses renewed in 2024
Level indicator (blackwater)	New sensors installed in 2023
Blackwater tank extraction	deck extraction
Greywater tank (litre)	stainless steel 55
Wheel steering	2 x 3-spoke (carbon with ash) steering wheel (1.000 mm)
Outside helm position	cable steering & chain steering
Emergency tiller	Aluminium
More info on hull	The hull built of composite PVC Nomex Honeycomb/foam core with kevlar and carbon wet laminate. Main bulkheads carbon fibre sound insulated between 2 layers of foam. Structural engineering was done by High Modulus Limited. Watertight bulkheads located at the forward end of the owner's cabin and at the aft end of the aft cabins
More info on paintwork	The exterior was spray-painted by Alexseal in 2011



Extra info	Composite construction balanced rudder, pre-preg carbon fibre stock, foam cored with kevlar reinforced blade and JP3 rudder bearings.
Extra info	All plastic thru hull fittings and sea cocks have been renewed in 2021. All tanks are situated under the saloon floor.
Extra info	Hydraulic pump fitted to the gearbox PTO and piped into a common hydraulic circuit. The entire hydraulic system is refurbished & all hoses renewed in 2023. Swagelok Hydraulic Oil Pressure Gauge on the starboard steering pedestal.

ACCOMMODATION

Cabins	4
Berths	10
Interior	ash (varnished) with white painted (2021) Nomex panels
Floor	wood 4mm ash with carbon infills mounted on carbon fibre Nomex panels
Open cockpit	yes
Saloon	Very spacious retro styled in new condition
Headroom saloon (m)	2,00
Heating	electric 220V
Heating 2	electric 220V
Air-conditioning	reverse cycle airco New in 2013 (installed in 2018) : 3 x Westerbeke
Navigation center	New in 2023/2024 : Roartech Marine Engineering designed the navigation system & customised it to the owners wishes
Chart table	On port side
Aft Cabin	2 x
Galley	On starboard side - Headroom : 1,85 - 2,00 m
Countertop	corian White (6mm) mounted on carbon fibre Nomex panel
Sink	corian White
Cooker	calor gas 3 x burner - stainless steel Force 10
Oven	Stainless steel Force 10
Extractor	24 Volt



Gas alarm	Vetus
Microwave/oven combi	Panasonic Steam Plus
Fridge	Custom Made front loader, stainless steel finished inside (10 cubic foot) with a water cooled Danfoss compressor (renewed in 2019). New thermostat installed in 2020
Freezer	Custom Made top loader, stainless steel finished inside (10 cubic foot) with a water cooled Danfoss compressor (renewed in 2019). New thermostat installed in 2020
Hot water system	220V New 2023 : 40 L Rheinstrom boiler with circulation pump
Water pressure system	electrical 2023 : new water pressure pump & stainless steel Pro water hoses
Dishwasher	2017: Fisher & Paykel - stainless steel - top loader
Waste compactor	yes
Owners cabin	twin single In the front cabin - headroom : 1,95 m
Bed length (m)	2x 2,10 x 1,00
Wardrobe	hanging/drawers/shelves
Bathroom	en suite In the bow - Headroom 2,05 m
Toilet	en suite In the bow bathroom
Toilet system	electric
Wash basin	at the toilet In the bow bathroom
Shower	shared Midship on starboard side - Headroom : 1,90 m
Extra info	New in 2013/2014 : Neptune Custom Made Latex (25 cm) mattresses
Guest cabin 1	double bed + single bed Midship on port side - Headroom : 2,00 m
Bed length (m)	2,10 x 1,45 & 2,10 x 0,75
Wardrobe	hanging/drawers/shelves
Bathroom	separate Midship on starboard side - Headroom : 1,85 m
Toilet	separate Midship on starboard side bathroom
Toilet system	electric
Wash basin	at the toilet Midship on starboard side bathroom
Extra info	New in 2013/2014 : Neptune Custom Made Latex (25 cm) mattresses
Guest cabin 2	Starboard aft cabin - 3 x single bed - Headroom: 2,05 m



MARTEN 60

Bed length (m)	2,10 x & 2,10 x 0, & 2,10 x 0,
Wardrobe	hanging and drawers
Bathroom	en suite Starboard aft - Headroom : 1,95 m
Toilet	en suite
Toilet system	electric
Wash basin	in the bathroom
Extra info	New in 2013/2014 : Neptune Custom Made Latex (25 cm) mattresses
Guest cabin 3	bunk bed Port side aft cabin - headroom : 2,00 m
Bed length (m)	2,10 x & 2,10 x
Wardrobe	hanging and drawers
Extra info	New in 2013/2014 : Neptune Custom Made Latex (25 cm) mattresses
Extra info	New in 2013/2014 : Neptune Custom Made luxurious fabric mattresses (in all cabins) & upholstery with brown leather border
Extra info	Entire interior lights renewed in 2023 into LED, also LED atmosphere lighting cables installed above the floor. All wc/showerrooms with 6 mm Corian worktops mounted on carbon fibre Nomex panels. There are a number of sliding drawers in the entrance staircase. All clothes rails are in Carbon.

MACHINERY

No of engines	1
Make	Yanmar
Type	4LAH-HTP
HP	160
kW	117.76
Fuel	diesel
Year installed	2010
Maximum speed (kn)	9,5
Cruising speed (kn)	8
Consumption (l/hr)	4



Engine cooling system	freshwater heat exchanger
Drive	shaft
Shaft seal	yes
Engine controls	bowden cable New in 2010
Gearbox	hydraulic New in 2010
Bowthruster	hydraulic 2013 : Hydraulic retractable Maxpower R200 (wireless remote)
Exhaust	watercooled Custom Made Carbon exhaust pipe between hose & exhaust outlet
Thrust bearing	New in 2010 : Pyton
Propeller type	folding New in 2010 : Gori
Propeller blades	3
Propeller shaft material	stainless steel
Shaft lubrication	water
Manual bilge pump	New in 2023
Electric bilge pump	New in 2023 : 3 x
Bilge alarm	New in 2023
Electrical installation	12 & 24 & 220 Volt (completely renewed in 2022/2023)
Generator	silent separator Kubota / Mastervolt Whisper 6 Ultra 7 kW (overhauled in 2023)
Running hours generator	110
Start battery	New in 08/2020 : 1 x AGM 140 Ah
Service battery	New in 2023 : 2 x 24V-200Ah/5,5kWh Mastervolt Lithium-Ion Ultra
Generator battery	New in 2019 : 1 x AGM 140 Ah
Battery monitor	New in 2023 : Mastervolt
Battery charger	New in 2023 : Mastervolt Chargemaster 24/100-3
Inverter	New in 2023 : Mastervolt Mass Shine 24/2500
Diode battery combiners	New in 2023
Shorepower	with cable New in 2023
Insulation transformer	New in 2020 : 2 x Mastervolt Mass GI 3.5 16A & 1 x Mastervolt 12/12 & 1 x Mastervolt 24/24



Watermaker	Tecnomar 80 l/hr (All hoses and membranes renewed in 2024 & completely overhauled in 2025)
Extra info	Mastervolt E-mastering system (New in 2023).
Extra info	Omron PLC Com 1 refurbished in 2023.
Extra info	The generator was extra isolated in 2016 & serviced in 2024.

NAVIGATION

Compass	New in 2012 : 2 x Suunto
Electric compass	New in 2023 : B&G
Multi control display	New Custom Made in 2023 : B&G - Analoge & Digital (2 x under sprayhood & 1 x at the steering pedestal & 1 x at navigation table)
Depth sounder	New in 2023 : B&G
Depth sounder/log	yes
Log	New Custom Made in 2023 : B&G - Analoge
Windset	New Custom Made in 2023 : B&G - Analoge & Digital
Repeater	New in 2023 : B&G - Digital - on mast & at navigation table
VHF	New in 2023 : B&G with a wireless handset in the cockpit
Autopilot	New in 2023 : B&G - Digital
Rudder angle indicator	In the display of the autopilot
GPS	yes
Radar/GPS/plotter	New in 2023/2024 : 2 x B&G Zeus 3s 12' (on each steering pedestal) & 1 x B&G Zeus 3 9' (at navigation table). Radar antenna is half cardanic installed on a scanstrut, which is mounted onto the back stay.
Navtex	Refurbished in 2022
Personal computer	New in 2023 : 1 x Time Zero PC & 1 x Separate PC unit with a navigation system
PC connection	New in 2023
Wifi antenna	New in 2023
Electronis chart(s)	yes
AIS transceiver	New in 2023 - Professional version



Camera	New in 2024 : B&G (stainless steel) - installed on the front side of the boom & on a spreader in the mast
Navigation lights	LED. New in 2024: Lopo mast head 3-colour/anchor light
Extra info	In 2023 & 2024 Roartech Marine Engineering equipped PINTA SMERALDA with new Custom Made & Designed B&G navigation instruments a new B&G Hercules 500 Pro navigation system with also a board computer, new electronical installations and programmed all systems on board
Extra info	New in 2014 : LED Underwater lights & LED spreader lights (8 x facing up & 2 x down) & Courtesy lights in the cockpit.

EQUIPMENT

Sprayhood with grab rail	New in 2022 : Off-White
Bimini	New in 2022 : Off-White
Winter cover	Over entire deck (which is also a summer cover)
Cockpit cushions	New in 2018 : Anthracite
Cockpit table	New in 2012 : Unique Designed & Custom Made "floating" teak with carbon box in a welded seamless stainless steel bracket
Bathing platform	Fold-out transom boarding/bathing platform
Boarding ladder	stainless steel On the bathing platform
Gangway	Carbon
Deck shower	Hot & cold (on the bathing platform)
Anchor	CQR Plough Simpson & Lawrence
Anchor chain	The anchor is stowed in the anchor locker and can be manual lifted into position on the bulwark. There is 50 m of anchor chain and a rope
Anchor 2	Aluminium (spare) with a rope
Windlass	hydraulic Lewmar Concept III with a wireless remote control
Deck wash	(in the locker on the bow)
Sea railing	wire Double - stainless steel
Grab rail (superstructure)	stainless steel
Railing side opening gates	On both sides
Pushpit	Custom Made in stainless steel



Pulpit	Custom Made in stainless steel
Life raft	New in 2023 : Hero
Life raft (pers)	valise (or bag) 8
Lifebuoy	yes
Safety lines on deck	yes
Fenders	yes
Mooring lines	yes
Spare parts	yes
TV	New in 2023 : Samsung Smart TV
Surround Sound System	New in 2010 : Extensive onboard Bose entertainment system
Sub-woofer	New in 2010 : Bose
Speakers in salon	New in 2010 : Bose
Clock - barometer	Wempe
Fire extinguisher	6 x
Latest extinguisher survey	2024
Extinguisher in engine room	Needs to be checked/renewed
Extra info	Very spacious locker on the bow. 6 x Aluminium retractable mooring cleat.
Extra info	All hoses renewed in 2023/2024. New in 2024 : Windex
Extra info	In order to be able to transport this yacht by road with a safe feeling, custom-made shells have been constructed in the hull shape of the underwater hull, these are included.

RIGGING

Rigging	fractional The sail area is 202 m2.
Standing rigging	Rod New in 2013/2014, New stay in genua furler with a custom swiffel
Brand mast	Master Spars (White Alexseal spray-painted in 2013/2014)
Material mast	carbon MMI carbon fibre composite
Spreaders	4 x set of Carbon spreaders (White Alexseal spray-painted in 2013/2014)
Keel stepped mast	yes



Mainsail	UK Sails : Carbon Kevlar 3DL Millenium coated furling mainsail covered with a black Sunbrella UV protection
Mainsail cover	Sand colour
Fully battened mainsail	yes
Furling boom	Marten System (hydraulic winch in the end of the boom)
Jib	UK Sails : Carbon Kevlar 3DL Millenium coated furling Self Tacking Jib covered with a black Sunbrella UV protection
Genoa furler	Reckmann (hydraulic - overhauled in 2023) with a Custom Top Swiffel (new in 2019)
Code Zero	3 x used - with a new (2023) taw furler
Gennaker	Green (very little used - 320 m2) with a snuffer
Stormjib	yes
Self tacking jib installation	With 2 self-tacking rails on the front deck
Reefing System	main in-boom furling Hydraulic winch in boom (at the end)
Backstay adjuster	hydraulic Navtec
Boomvang	hydraulic Navtec
Primary sheet winch	Navtec hydraulic ram (2,7 m cylinder) for self-tacking Jib sheet
Secondary sheet winch	Navtec hydraulic ram (2,00 m cylinder) for main sheet
Genoa sheetwinches	2 x Lewmar 77ST (hydraulic)
Halyard winches	Simpson Lawrence captive winch for mainsail halyard & 1 x Lewmar 77ST (hydraulic) & 1 x Lewmar 66ST
Reefing winch	2 x Lewmar 64ST
Winchcovers	yes
Gennaker pole	carbon Navtec hydraulic retractable bowsprit
Extra info	MMI Carbon fibre composite furling boom has been completely overhauled in 2009/2010. Luff-tentioner & mainsheet traveler are hydraulic controlled. Stainless steel stay tentioner protection pipes. Lewmar deck gear & blocks (New in 2012).



Extra info

PINTA SMERALDA: A SAILING ICON IN THE SPOTLIGHT IN 2025 ! In 2025, the PINTA SMERALDA shines like never before. This masterpiece of sailing technology and design, a Marten 60 built by Marten Marine in Auckland, New Zealand, is receiving significant attention from the international yachting world. Two leading watersports magazines, Europe's largest sailing magazine, the German "Die Yacht", and the most exclusive Dutch yachting lifestyle magazine, "Nautique", are dedicating extensive articles to this stunning and exclusive sailing yacht in respectively their first and second editions of this year, respectively.

A Unique Design with a Rich History : The PINTA SMERALDA is a design by Judel/Vrolijk & Co, the renowned German design firm globally recognized for their innovative and championship-winning yacht designs. The sleek lines and advanced construction techniques of the Marten 60 make this yacht not only an aesthetic beauty but also a technological marvel. Fully built in carbon, the boat offers a perfect balance between speed, agility, and luxury.

The Legacy of Willy Illbruck : The history of the PINTA SMERALDA is closely linked to Willy Illbruck, a name synonymous with performance and innovation in the sailing world. Illbruck's passion for perfection and speed is evident in every detail of this yacht. His legacy continues to live on in the PINTA SMERALDA, which is now owned by someone with the same dedication to quality and craftsmanship.

A Perfectionist at the Helm : The current owner of the PINTA SMERALDA is a true perfectionist and has spared no effort in keeping this yacht in absolute top condition over the years. Every detail, from the deck equipment to the high-tech rigging, is meticulously maintained and optimized. This has ensured that the PINTA SMERALDA remains one of the most admired and sought-after performance cruisers in her class.

A Symbol of Beauty and Technical Perfection : The PINTA SMERALDA is more than just a sailing yacht – it is an icon of design, craftsmanship, and nautical excellence. Her presence in "Die Yacht" and "Nautique" magazines highlights her status as one of the most exclusive and desirable sailing yachts of the moment.



MARTEN 60



MARTEN 60



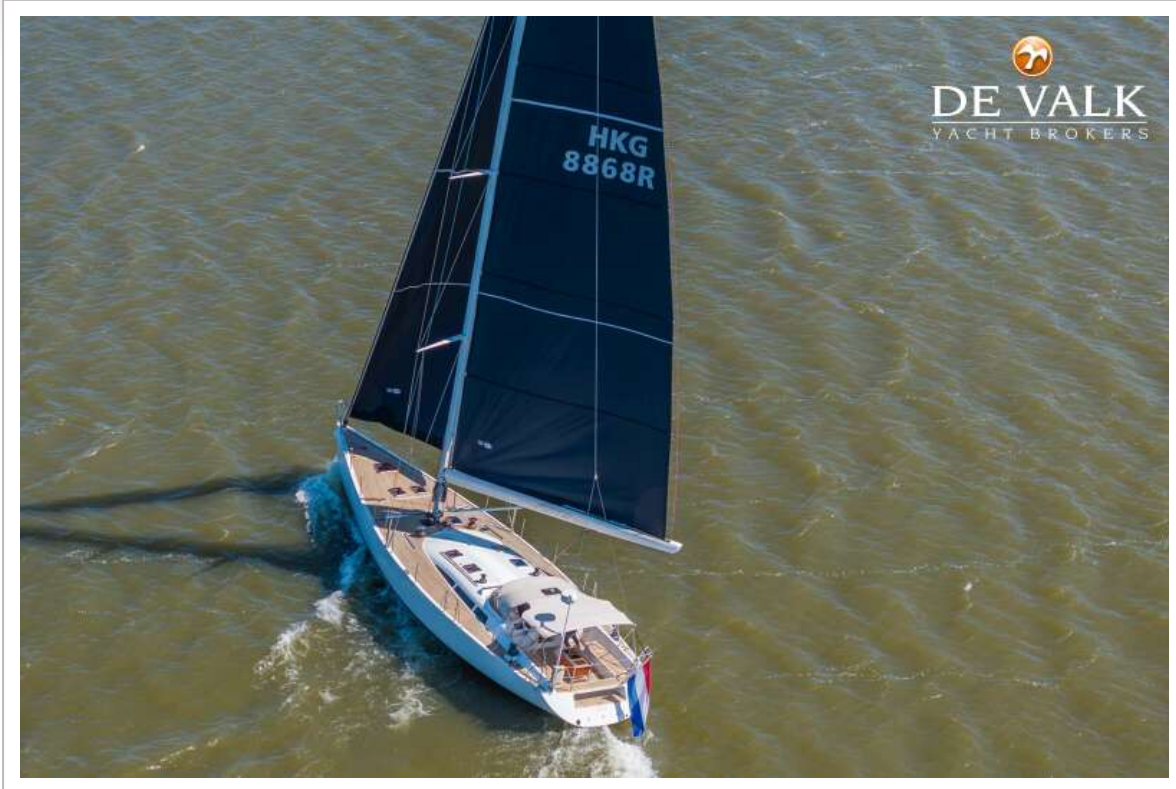


MARTEN 60



MARTEN 60





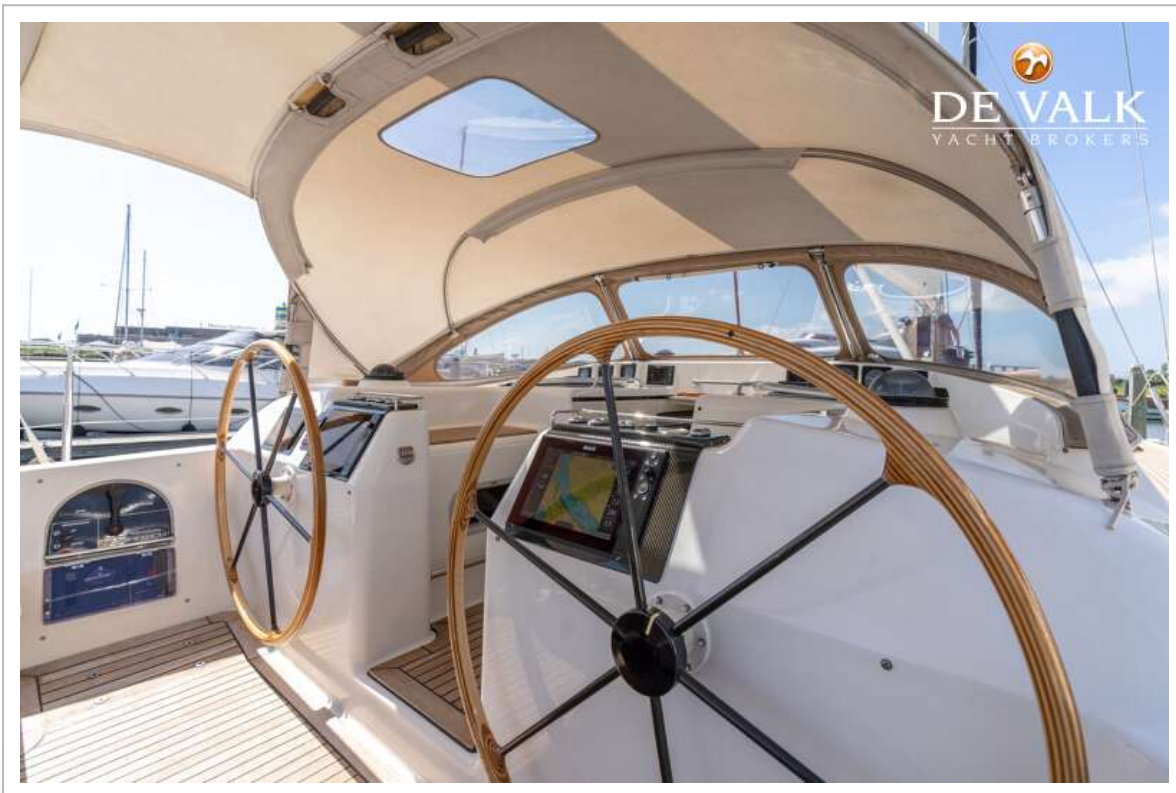
MARTEN 60



MARTEN 60



MARTEN 60



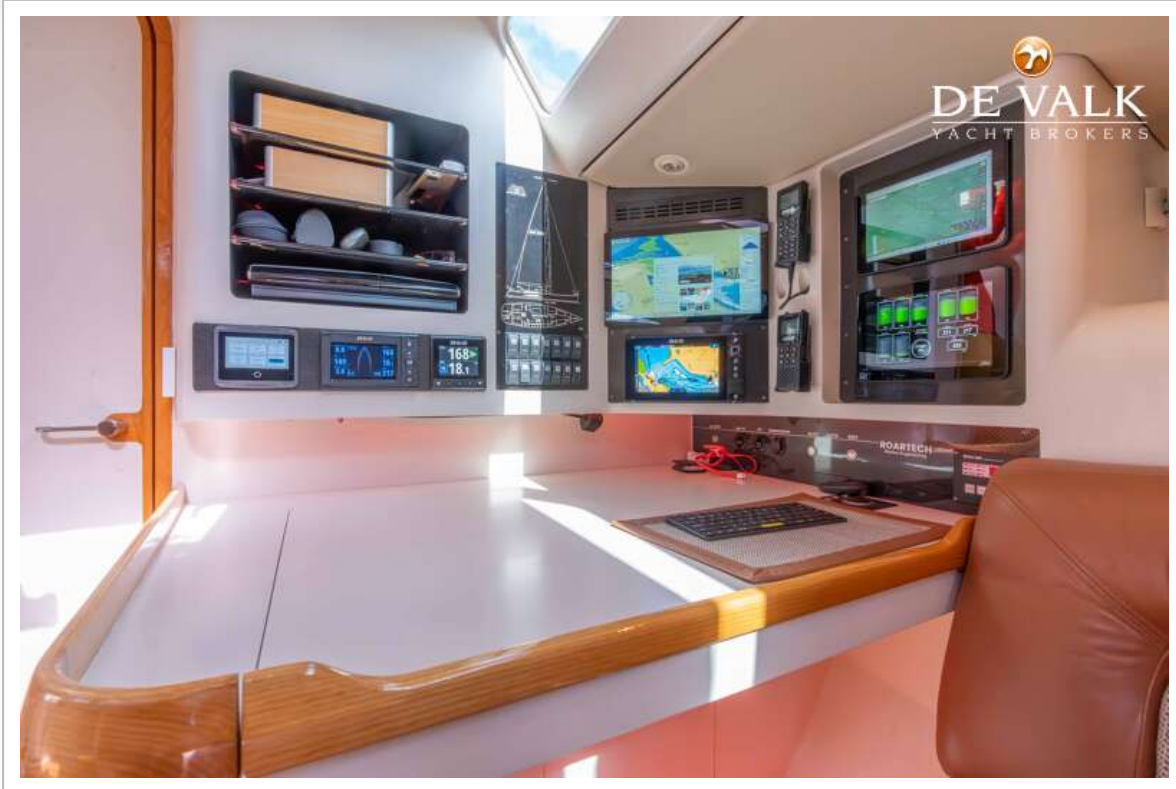
MARTEN 60



MARTEN 60



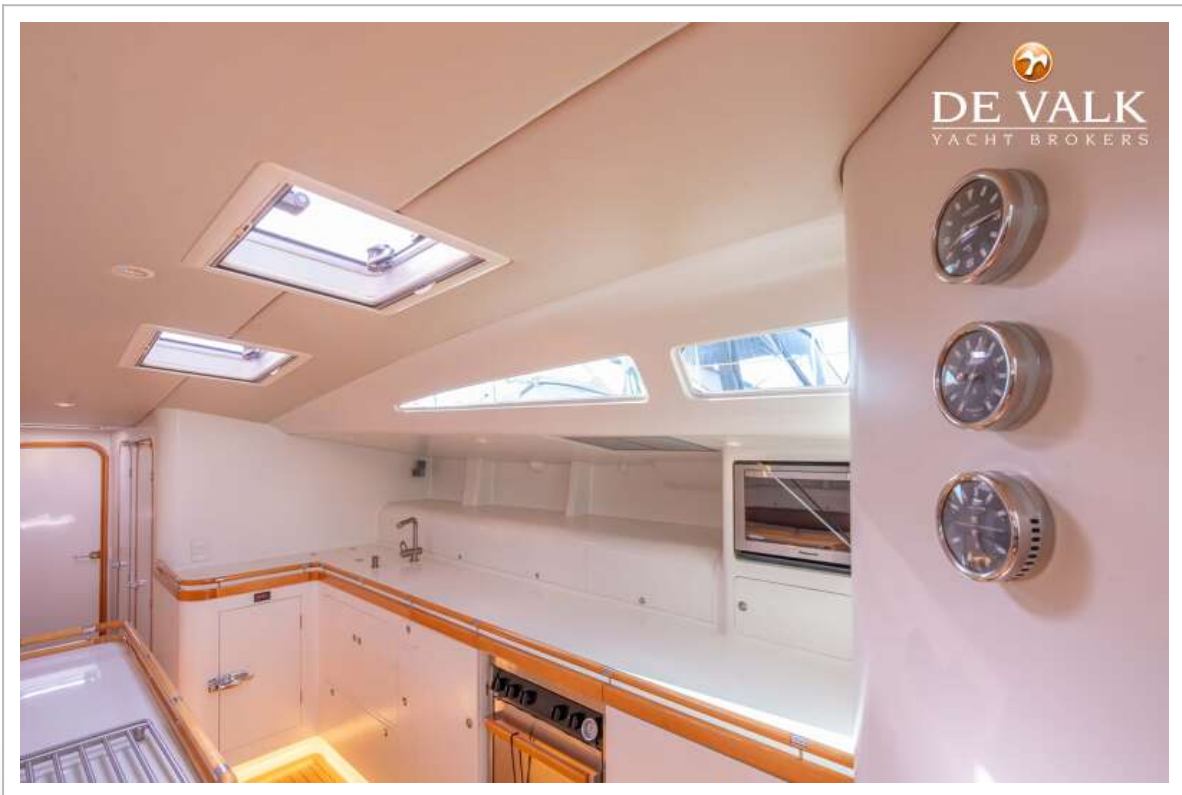
MARTEN 60



MARTEN 60



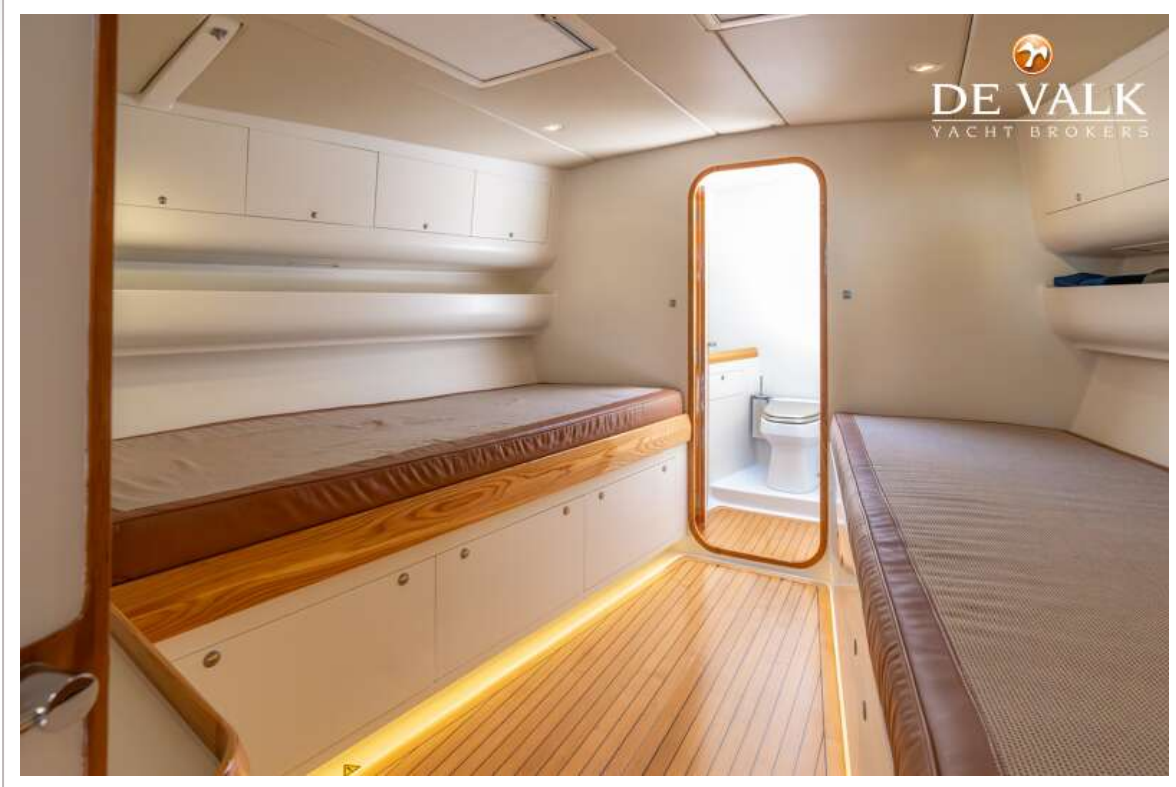
MARTEN 60



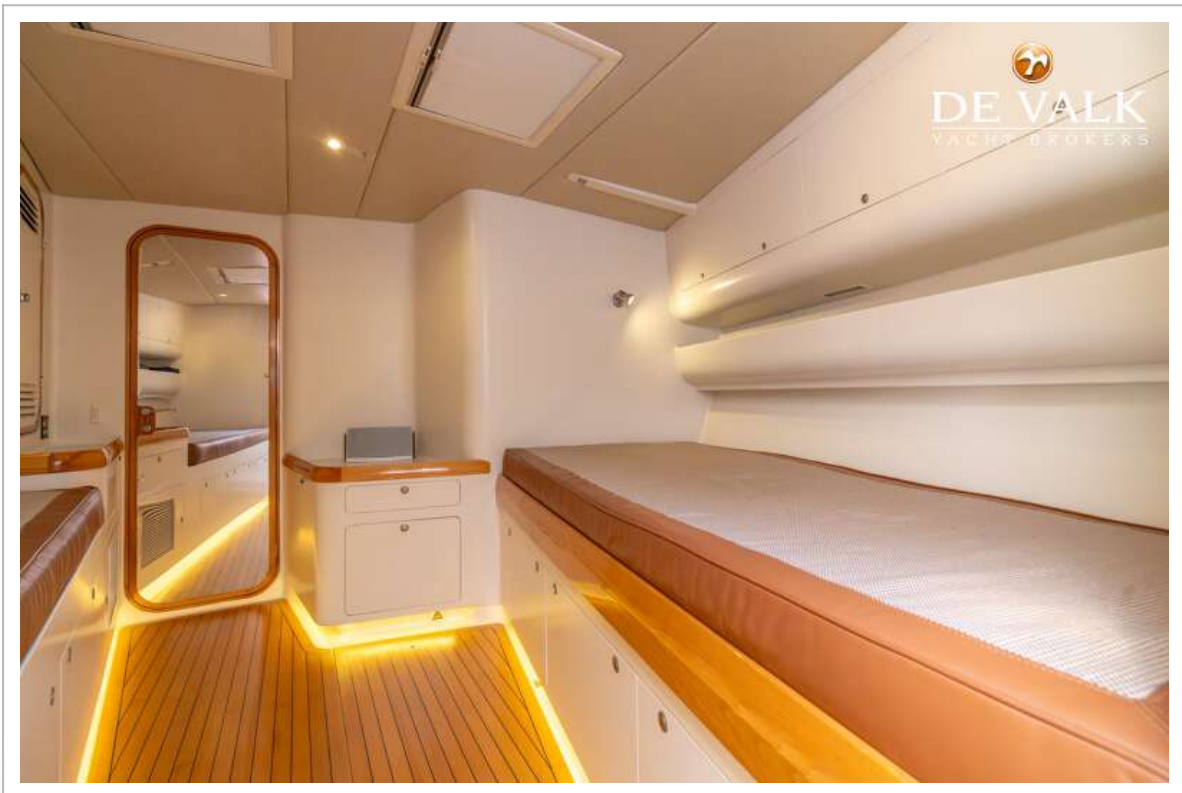
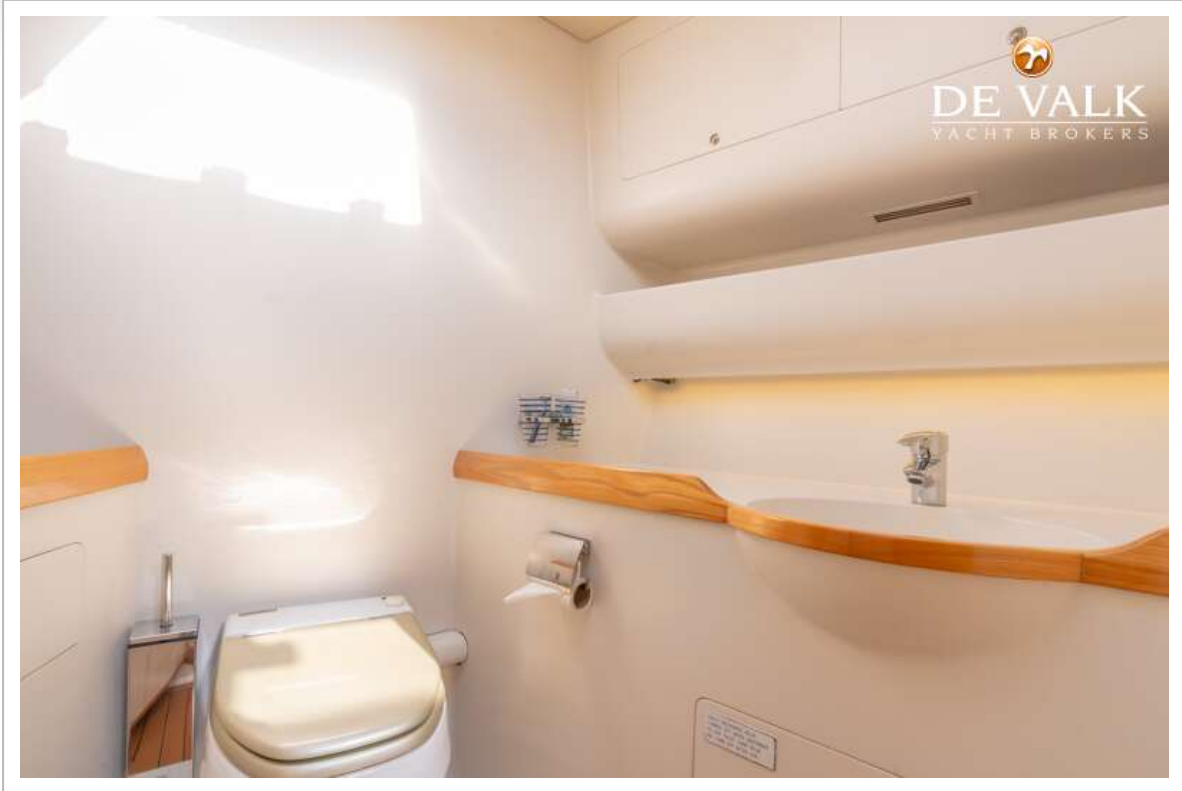
MARTEN 60



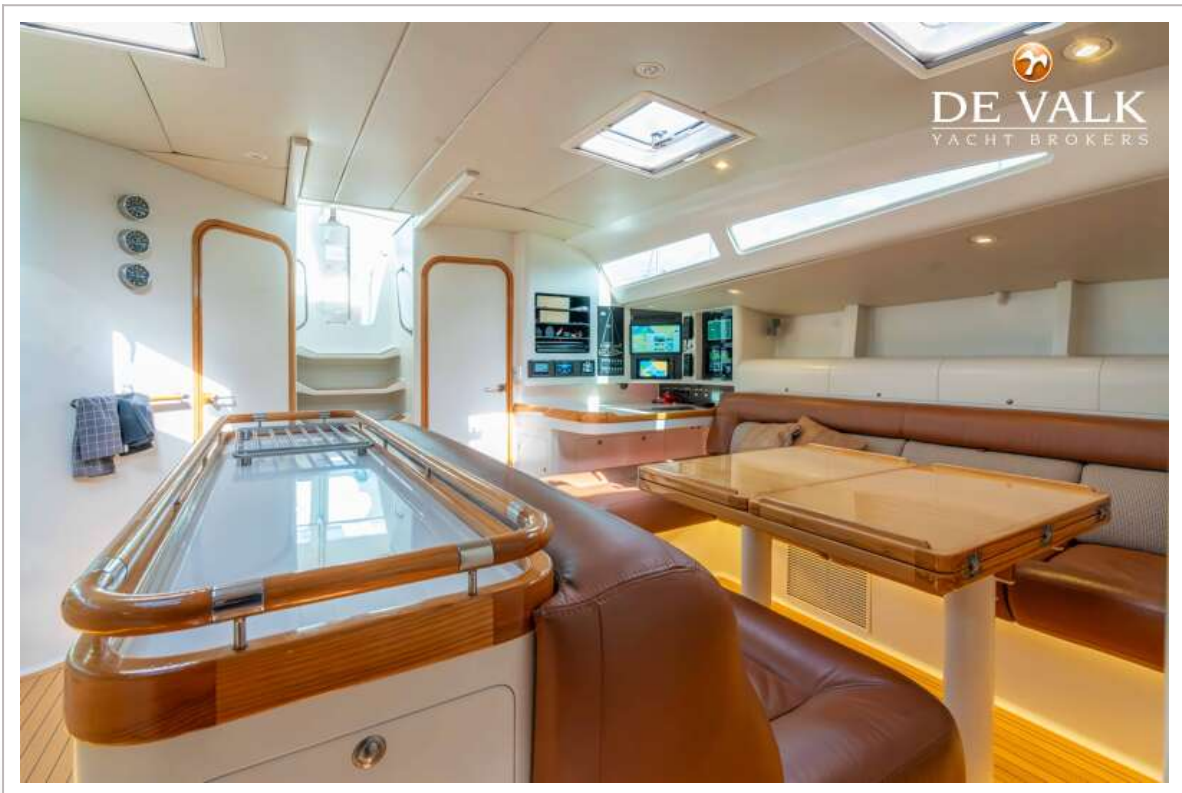
MARTEN 60



MARTEN 60



MARTEN 60



MARTEN 60



